

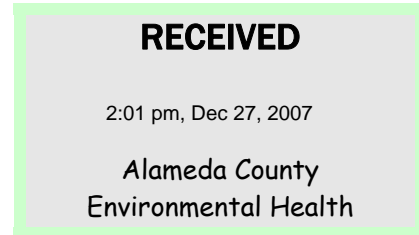


Arctos Environmental
✓ 1332 Peralta Avenue 510 525-2180 PHONE
Berkeley, CA 94702 510 525-2392 FAX

Main Office
○ 3450 E. Spring St., Suite 212 562 988-2755 PHONE
Long Beach, CA 90806 562 988-2759 FAX

15 September 2007
Project No. 01LV

Jerry Wickham
Hazardous Materials Specialist
Alameda County Environmental Health
1131 Harbor Bay Parkway, Suite 250
Alameda, California 94502-6577



**Subject: Second Quarter 2007 Status Report
1619 1st Street, Livermore, California
Tesoro No. 67076 (Former Beacon 3604); ACEH Case No. RO0000434**

Dear Mr. Wickham:

Arctos Environmental (Arctos), on behalf of Tesoro Companies, Inc. (Tesoro), has prepared this letter report summarizing project activities for the second quarter 2007 at the subject site (Figure 1). From April through June 2007, Arctos completed quarterly groundwater monitoring of 14 wells.

Groundwater Monitoring

Arctos performed groundwater monitoring at the site on 17 May 2007. Samples were collected from wells MW-1 through MW-10, VW-2, VW-3, TP-1, and TP-2 (Figure 2). Groundwater monitoring was performed in accordance with the guidelines of the Regional Water Quality Control Board, San Francisco Bay Region (RWQCB).

Field Activities for Groundwater Sampling

The depth to groundwater of each well was measured and recorded on field data sheets before sampling (Appendix A). Depth to groundwater and groundwater elevations are summarized on Table 1.

During purging, pH, specific conductivity, and temperature were measured and recorded for the evacuated groundwater. Groundwater samples were collected after the temperature, pH, and specific conductivity of the groundwater had stabilized to within approximately 10 percent of the previous reading and at least 3 casing volumes of groundwater were removed from the well, unless the well purged dry. Well purge water was stored temporarily on site in 55-gallon drums.

Analytical Program

The groundwater samples were analyzed by Kiff Analytical LLC (Kiff), a State-certified laboratory in Davis, California, for total petroleum hydrocarbons as gasoline (TPHg); benzene, toluene, ethylbenzene, and total xylenes (BTEX); methyl tert-butyl ether (MTBE); and other oxygenates and alcohols using EPA Method 8260B.

Arctos, as Tesoro's Authorized Responsible Party for the site, also has electronically submitted the groundwater monitoring results to the State Water Resources Control Board (SWRCB). The data were submitted in the State-mandated Electronic Data Format (EDF), in accordance with Assembly Bill 2886 requirements for underground storage tank (UST) sites in California.

Summary of Groundwater Results

As indicated in Table 1, the depth to groundwater was approximately 32 to 37 feet below ground surface (434 to 443 feet above mean sea level). The water level data indicate that the general direction of water flow is toward the northwest with an estimated gradient of 0.014 (1 foot/70 feet; Figure 2).

The highest TPHg and benzene concentrations of 37,000 and 7,400 micrograms per liter ($\mu\text{g/l}$), respectively, were at well MW-2. The highest MTBE concentration of 69,000 $\mu\text{g/l}$ was at well TP-2. Elevated benzene and MTBE concentrations in groundwater (240 and 770 $\mu\text{g/l}$, respectively) are also present approximately 140 feet downgradient of the site at well MW-6.

Historical analytical results for the groundwater samples are summarized in Table 2. Figures 3 and 4 show the isoconcentration contours for benzene and MTBE, respectively. The laboratory report and chain-of-custody form are in Appendix B.

Conclusions and Recommendations

Results of the groundwater sampling indicate that groundwater is impacted by TPHg, benzene, and MTBE, and is delineated to the northwest by well MW-9, to the south by well MW-1, to the north by MW-5, and to the east by wells MW-3 and MW-4.

Arctos will perform the following tasks during the third quarter of 2007:

- Quarterly groundwater monitoring
- Begin preparation of an interim remedial action plan to treat the impacted groundwater in the northwest corner of the site.

Jerry Wickham
Alameda County Environmental Health
15 September 2007
Page 3

If you have questions or comments, please call Mike Purchase at 510/525-2180 or Jeff Gwinn at 562/988-2755.

Very truly yours,

ARCTOS ENVIRONMENTAL


Michael P. Purchase
Senior Project Manager




FOR Jeffrey P. Gwinn, P.E.
Vice President

Copy: Jeffrey M. Baker, P.E. – Tesoro Companies, Inc.
Colleen Winey – Zone 7 Water Agency

Attachments: Table 1 – Well and Groundwater Elevations
Table 2 – Groundwater Monitoring Analytical Results
Figure 1 – Site Location Map
Figure 2 – Groundwater Elevation Contours
Figure 3 – Benzene Concentration Contours
Figure 4 – MTBE Concentration Contour
Appendix A – Field Data Sheets
Appendix B – Laboratory Analytical Reports and Chain-of-Custody Forms

TABLE 1
WELL AND GROUNDWATER ELEVATIONS
TESORO - LIVERMORE, 67076

Monitoring Well	Date of Measurement	Depth to Water (feet below casing)	PVC Casing Elevation^(a) (feet MSL)	Water Table Elevation^(b) (feet MSL)
MW-1	6/1/1993	37.50	474.29	436.79
	6/22/1993	38.46		435.83
	10/6/1993	42.22		432.07
	1/13/1994	34.52		439.77
	3/30/1994	31.93		442.36
	4/25/1994	33.49		440.80
	8/12/1994	41.03		433.26
	12/14/1994	38.63		435.66
	2/10/1995	30.80		443.49
	6/15/1995	25.46		448.83
	9/26/1995	31.05		443.24
	12/15/1995	28.11		446.18
	3/21/1996	17.67		456.62
	6/13/1996	22.86		451.43
	9/16/1996	30.04		444.25
	12/2/1996	26.74		447.55
	3/7/1997	20.84		453.45
	6/12/1997	28.71		445.58
	9/29/1997	33.91		440.38
	12/1/1997	34.88		439.41
	3/19/1998	19.83		454.46
	5/29/1998	21.57		452.72
	9/15/1998	31.68		442.61
	11/30/1998	36.80		437.49
	1/17/1999	30.02		444.27
	6/10/1999	29.30		444.99
	9/7/1999	31.41		442.88
	12/13/1999	32.95		441.34
	3/13/2000	25.74		448.55
	6/12/2000	28.24		446.05
11/10/2000	30.56	443.73		
12/31/2000	31.71	442.58		
3/27/2001	30.43	443.86		
6/30/2001	36.61	437.68		
9/26/2001	45.10	429.19		

TABLE 1
WELL AND GROUNDWATER ELEVATIONS
TESORO - LIVERMORE, 67076

Monitoring Well	Date of Measurement	Depth to Water (feet below casing)	PVC Casing Elevation^(a) (feet MSL)	Water Table Elevation^(b) (feet MSL)
MW-1 (cont.)	12/18/2001	39.39	474.29	434.90
	3/18/2002	38.24		436.05
	8/21/2002	36.71		437.58
	12/3/2002	36.85		437.44
	3/4/2003	33.72		440.57
	6/10/2003	31.31		442.98
	9/9/2003	35.05		439.24
	12/23/2003	30.15		444.14
	3/23/2004	26.61		447.68
	5/10/2004	30.31		443.98
	8/4/2004	34.77		439.52
	11/4/2004	33.93		440.36
	1/12/2005	27.82		446.47
	5/2/2005	24.87		449.42
	7/19/2005	29.26		445.03
	11/21/2005	31.15		443.14
	2/9/2006	26.24		448.05
	5/16/2006	24.87		449.42
	8/9/2006	31.64		442.65
	11/8/2006	31.16		443.13
2/14/2007	30.00	444.29		
5/17/2007	33.75	440.54		
MW-2	6/1/1993	38.02	472.98	434.96
	6/22/1993	39.07		433.91
	10/6/1993	43.72		429.26
	1/13/1994	35.85		437.13
	3/30/1994	32.82		440.16
	4/25/1994	34.76		438.22
	8/12/1994	44.33		428.65
	12/14/1994	40.00		432.98
	2/10/1995	32.16		440.82
	6/15/1995	25.93		447.05
	9/26/1995	32.42		440.56
	12/15/1995	29.41		443.57
	3/21/1996	17.47		455.51

TABLE 1
WELL AND GROUNDWATER ELEVATIONS
TESORO - LIVERMORE, 67076

Monitoring Well	Date of Measurement	Depth to Water (feet below casing)	PVC Casing Elevation^(a) (feet MSL)	Water Table Elevation^(b) (feet MSL)
MW-2 (cont.)	6/13/1996	23.69	472.98	449.29
	9/16/1996	31.24		441.74
	12/2/1996	26.90		446.08
	3/7/1997	21.33		451.65
	6/12/1997	29.94		443.04
	9/29/1997	34.22		438.76
	12/1/1997	35.94		437.04
	3/19/1998	20.34		452.64
	5/29/1998	22.63		450.35
	9/15/1998	32.30		440.68
	11/30/1998	36.90		436.08
	1/17/1999	30.17		442.81
	6/10/1999	29.98		443.00
	9/7/1999	31.85		441.13
	12/13/1999	33.72		439.26
	3/13/2000	26.54		446.44
	6/12/2000	28.44		444.54
	11/10/2000	31.31		441.67
	12/31/2000	32.68		440.30
	3/27/2001	30.81		442.17
	6/30/2001	37.58		435.40
	9/26/2001	44.97		428.01
	12/18/2001	40.67		432.31
	3/18/2002	38.94		434.04
	6/5/2002	36.45		436.53
	8/21/2002	37.15		435.83
	12/3/2002	36.76		436.22
	3/4/2003	33.60		439.38
	6/10/2003	32.89		440.09
	9/9/2003	35.45		437.53
12/23/2003	31.79	441.19		
3/23/2004	28.25	444.73		
5/10/2004	30.91	442.07		
8/4/2004	35.36	437.62		
11/4/2004	34.92	438.06		

TABLE 1
WELL AND GROUNDWATER ELEVATIONS
TESORO - LIVERMORE, 67076

Monitoring Well	Date of Measurement	Depth to Water (feet below casing)	PVC Casing Elevation^(a) (feet MSL)	Water Table Elevation^(b) (feet MSL)
MW-2 (cont.)	1/12/2005	29.46	472.98	443.52
	5/2/2005	25.61		447.37
	7/19/2005	30.11		442.87
	11/21/2005	32.04		440.94
	2/9/2006	27.11		445.87
	5/17/2006	25.18		447.80
	8/9/2006	32.69		440.29
	11/8/2006	33.21		439.77
	2/14/2007	31.27		441.71
	5/17/2007	34.40		438.58
MW-3	6/1/1993	36.18	473.37	437.19
	6/22/1993	37.11		436.26
	10/6/1993	41.15		432.22
	1/13/1994	33.95		439.42
	3/30/1994	30.97		442.40
	4/25/1994	32.46		440.91
	8/12/1994	41.72		431.65
	12/14/1994	37.62		435.75
	2/10/1995	29.96		443.41
	6/15/1995	23.66		449.71
	9/26/1995	29.62		443.75
	12/15/1995	27.10		446.27
	3/21/1996	15.85		457.52
	6/13/1996	21.31		452.06
	9/16/1996	28.62		444.75
	12/2/1996	25.55		447.82
	3/7/1997	19.77		453.60
	6/12/1997	27.67		445.70
	9/29/1997	29.60		443.77
	12/1/1997	33.37		440.00
	3/19/1998	18.76		454.61
	5/29/1998	20.64		452.73
9/15/1998	30.70	442.67		
11/30/1998	34.96	438.41		
1/17/1999	28.81	444.56		

TABLE 1
WELL AND GROUNDWATER ELEVATIONS
TESORO - LIVERMORE, 67076

Monitoring Well	Date of Measurement	Depth to Water (feet below casing)	PVC Casing Elevation^(a) (feet MSL)	Water Table Elevation^(b) (feet MSL)
MW-3 (cont.)	6/10/1999	28.10	473.37	445.27
	9/7/1999	30.38		442.99
	12/13/1999	31.46		441.91
	3/13/2000	24.28		449.09
	6/12/2000	26.80		446.57
	11/10/2000	29.47		443.90
	12/31/2000	31.38		441.99
	3/27/2001	29.94		443.43
	6/30/2001	37.54		435.83
	9/26/2001	45.17		428.20
	12/18/2001	39.41		433.96
	3/18/2002	37.73		435.64
	6/5/2002	35.35		438.02
	8/21/2002	36.21		437.16
	12/3/2002	35.92		437.45
	3/4/2003	32.75		440.62
	6/10/2003	31.26		442.11
	9/9/2003	34.72		438.65
	12/23/2003	30.47		442.90
	3/23/2004	26.67		446.70
	5/10/2004	30.25		443.12
	8/4/2004	34.70		438.67
	11/4/2004	33.94		439.43
	1/12/2005	28.21		445.16
	5/2/2005	24.56		448.81
	7/19/2005	29.39		443.98
	11/21/2005	31.30		442.07
2/9/2006	26.21	447.16		
5/16/2006	24.36	449.01		
8/9/2006	31.90	441.47		
11/8/2006	31.30	442.07		
2/14/2007	30.20	443.17		
5/17/2007	33.64	439.73		
MW-4	3/30/1994	31.56	473.64	442.08
	4/25/1994	32.73		440.91

TABLE 1
WELL AND GROUNDWATER ELEVATIONS
TESORO - LIVERMORE, 67076

Monitoring Well	Date of Measurement	Depth to Water (feet below casing)	PVC Casing Elevation^(a) (feet MSL)	Water Table Elevation^(b) (feet MSL)
MW-4 (cont.)	8/12/1994	41.61	473.64	432.03
	12/14/1994	38.11		435.53
	2/10/1995	30.50		443.14
	6/15/1995	23.63		450.01
	9/26/1995	29.70		443.94
	12/15/1995	27.56		446.08
	3/21/1996	15.63		458.01
	6/13/1996	21.07		452.57
	9/16/1996	28.99		444.65
	12/2/1996	26.04		447.60
	3/7/1997	19.69		453.95
	6/12/1997	28.04		445.60
	9/29/1997	29.91		443.73
	12/1/1997	33.88		439.76
	3/19/1998	18.67		454.97
	5/29/1998	20.16		453.48
	9/15/1998	30.46		443.18
	11/30/1998	34.50		439.14
	1/17/1999	28.30		445.34
	6/10/1999	27.60		446.04
	9/7/1999	30.79		442.85
	12/13/1999	31.60		442.04
	3/13/2000	24.35		449.29
	6/12/2000	26.91		446.73
	11/10/2000	29.71		443.93
	12/31/2000	31.79		441.85
	3/27/2001	29.98		443.66
	6/30/2001	36.88		436.76
	9/26/2001	43.87		429.77
	12/18/2001	39.30		434.34
3/18/2002	37.75	435.89		
6/5/2002	35.68	437.96		
8/21/2002	36.58	437.06		
12/3/2002	35.90	437.74		
3/4/2003	32.73	440.91		

TABLE 1
WELL AND GROUNDWATER ELEVATIONS
TESORO - LIVERMORE, 67076

Monitoring Well	Date of Measurement	Depth to Water (feet below casing)	PVC Casing Elevation^(a) (feet MSL)	Water Table Elevation^(b) (feet MSL)
MW-4 (cont.)	6/10/2003	31.20	473.64	442.44
	9/9/2003	34.64		439.00
	12/23/2003	31.30		442.34
	3/23/2004	26.71		446.93
	5/10/2004	30.33		443.31
	8/4/2004	34.87		438.77
	11/4/2004	34.28		439.36
	1/12/2005	28.67		444.97
	5/2/2005	24.46		449.18
	7/19/2005	29.36		444.28
	11/21/2005	31.80		441.84
	2/9/2006	26.34		447.30
	5/16/2006	24.30		449.34
	8/9/2006	32.05		441.59
	11/8/2006	32.85		440.79
	2/14/2007	30.46		443.18
5/17/2007	33.92	439.72		
MW-5	3/30/1994	32.07	472.67	440.60
	4/25/1994	33.65		439.02
	8/12/1994	42.73		429.94
	12/14/1994	38.89		433.78
	2/10/1995	31.44		441.23
	6/15/1995	24.99		447.68
	9/26/1995	30.20		442.47
	12/15/1995	28.56		444.11
	3/21/1996	16.82		455.85
	6/13/1996	22.61		450.06
	9/16/1996	29.78		442.89
	12/2/1996	26.51		446.16
	3/7/1997	21.91		450.76
	9/29/1997	31.74		440.93
	12/1/1997	34.05		438.62
	3/19/1998	20.93		451.74
	5/29/1998	21.30		451.37
9/15/1998	31.32	441.35		

TABLE 1
WELL AND GROUNDWATER ELEVATIONS
TESORO - LIVERMORE, 67076

Monitoring Well	Date of Measurement	Depth to Water (feet below casing)	PVC Casing Elevation^(a) (feet MSL)	Water Table Elevation^(b) (feet MSL)
MW-5 (cont.)	11/30/1998	35.44	472.67	437.23
	1/17/1999	29.59		443.08
	6/10/1999	28.05		444.62
	9/7/1999	31.11		441.56
	12/13/1999	32.66		440.01
	3/13/2000	25.87		446.80
	6/12/2000	28.15		444.52
	11/10/2000	30.05		442.62
	12/31/2000	31.81		440.86
	3/27/2001	30.57		442.10
	6/30/2001	37.24		435.43
	9/26/2001	44.53		428.14
	12/18/2001	40.65		432.02
	3/18/2002	38.75		433.92
	6/5/2002	36.21		436.46
	8/21/2002	36.76		435.91
	12/3/2002	36.12		436.55
	3/4/2003	32.90		439.77
	6/10/2003	33.04		439.63
	9/9/2003	34.20		438.47
	12/23/2003	31.38		441.29
	3/23/2004	27.51		445.16
	5/10/2004	31.12		441.55
	8/4/2004	35.09		437.58
	11/4/2004	34.34		438.33
	1/12/2005	29.19		443.48
	5/2/2005	25.31		447.36
	7/19/2005	30.49		442.18
	11/21/2005	32.35		440.32
	2/9/2006	27.19		445.48
5/16/2006	25.30	447.37		
8/9/2006	32.68	439.99		
11/8/2006	32.22	440.45		
2/14/2007	34.00	438.67		
5/17/2007	34.29	438.38		

TABLE 1
WELL AND GROUNDWATER ELEVATIONS
TESORO - LIVERMORE, 67076

Monitoring Well	Date of Measurement	Depth to Water (feet below casing)	PVC Casing Elevation^(a) (feet MSL)	Water Table Elevation^(b) (feet MSL)
MW-6	3/30/1994	33.38	471.93	438.55
	4/25/1994	35.49		436.44
	8/12/1994	45.14		426.79
	12/14/1994	40.99		430.94
	2/10/1995	33.34		438.59
	6/15/1995	26.88		445.05
	9/26/1995	33.55		438.38
	12/15/1995	30.32		441.61
	3/21/1996	18.89		453.04
	6/13/1996	24.62		447.31
	9/16/1996	32.64		439.29
	12/2/1996	27.42		444.51
	3/7/1997	22.13		449.80
	6/12/1997	31.02		440.91
	9/29/1997	35.77		436.16
	12/1/1997	37.14		434.79
	3/19/1998	21.10		450.83
	5/29/1998	23.26		448.67
	9/15/1998	33.50		438.43
	11/30/1998	38.73		433.20
	1/17/1999	32.05		439.88
	6/10/1999	31.44		440.49
	9/7/1999	33.94		437.99
	12/13/1999	35.84		436.09
	3/13/2000	28.45		443.48
	6/12/2000	30.52		441.41
	11/10/2000	32.99		438.94
	12/31/2000	34.95		436.98
	3/27/2001	32.72		439.21
	6/30/2001	39.86		432.07
	9/26/2001	Dry		Dry
	12/18/2001	43.36		428.57
3/18/2002	41.29	430.64		
6/5/2002	38.35	433.58		
8/21/2002	39.02	432.91		

TABLE 1
WELL AND GROUNDWATER ELEVATIONS
TESORO - LIVERMORE, 67076

Monitoring Well	Date of Measurement	Depth to Water (feet below casing)	PVC Casing Elevation^(a) (feet MSL)	Water Table Elevation^(b) (feet MSL)
MW-6 (cont.)	12/3/2002	38.76	471.93	433.17
	3/4/2003	35.13		436.80
	6/10/2003	34.15		437.78
	9/9/2003	37.66		434.27
	12/23/2003	33.43		438.50
	3/23/2004	29.96		441.97
	5/10/2004	32.98		438.95
	8/4/2004	37.02		434.91
	11/4/2004	37.03		434.90
	1/12/2005	32.01		439.92
	5/2/2005	27.30		444.63
	7/19/2005	32.27		439.66
	11/21/2005	33.23		438.70
	2/9/2006	29.07		442.86
	5/17/2006	27.23		444.70
	8/9/2006	35.22		436.71
	11/8/2006	33.41		438.52
	2/14/2007	33.43		438.50
5/17/2007	36.50	435.43		
MW-7	3/30/1994	31.98	472.33	440.35
	4/25/1994	33.56		438.77
	8/12/1994	43.35		428.98
	12/14/1994	39.34		432.99
	2/10/1995	32.11		440.22
	6/15/1995	25.51		446.82
	9/26/1995	31.43		440.90
	12/15/1995	28.97		443.36
	3/21/1996	17.36		454.97
	6/13/1996	23.47		448.86
	9/16/1996	31.35		440.98
	12/2/1996	27.11		445.22
	3/7/1997	21.33		451.00
	6/12/1997	29.90		442.43
	9/29/1997	34.37		437.96
12/1/1997	36.46	435.87		

TABLE 1
WELL AND GROUNDWATER ELEVATIONS
TESORO - LIVERMORE, 67076

Monitoring Well	Date of Measurement	Depth to Water (feet below casing)	PVC Casing Elevation^(a) (feet MSL)	Water Table Elevation^(b) (feet MSL)
MW-7 (cont.)	3/19/1998	20.33	472.33	452.00
	5/29/1998	22.30		450.03
	9/15/1998	32.54		439.79
	11/30/1998	37.96		434.37
	1/17/1999	31.04		441.29
	6/10/1999	29.89		442.44
	9/7/1999	32.38		439.95
	12/13/1999	33.98		438.35
	3/13/2000	27.09		445.24
	6/12/2000	28.76		443.57
	11/10/2000	31.54		440.79
	12/31/2000	32.76		439.57
	3/27/2001	30.97		441.36
	6/30/2001	37.50		434.83
	9/26/2001	45.11		427.22
	12/18/2001	41.13		431.20
	3/18/2002	39.22		433.11
	6/5/2002	36.55		435.78
	8/21/2002	36.81		435.52
	12/3/2002	36.52		435.81
	3/4/2003	32.60		439.73
	6/10/2003	31.33		441.00
	9/9/2003	34.71		437.62
	12/23/2003	30.80		441.53
	3/23/2004	26.41		445.92
	5/10/2004	29.86		442.47
	8/4/2004	34.06		438.27
	11/4/2004	34.12		438.21
	1/12/2005	28.83		443.50
	5/2/2005	24.66		447.67
7/19/2005	29.07	443.26		
11/21/2005	30.42	441.91		
2/9/2006	26.15	446.18		
5/16/2006	24.44	447.89		
8/9/2006	31.77	440.56		

TABLE 1
WELL AND GROUNDWATER ELEVATIONS
TESORO - LIVERMORE, 67076

Monitoring Well	Date of Measurement	Depth to Water (feet below casing)	PVC Casing Elevation^(a) (feet MSL)	Water Table Elevation^(b) (feet MSL)
MW-7 (cont.)	11/8/2006	31.14	472.33	441.19
	2/14/2007	30.39		441.94
	5/17/2007	33.31		439.02
MW-8	12/23/2003	32.01	471.18	439.17
	3/23/2004	28.50		442.68
	5/10/2004	31.44		439.74
	8/4/2004	35.11		436.07
	11/4/2004	34.77		436.41
	1/12/2005	29.66		441.52
	5/2/2005	25.91		445.27
	7/19/2005	30.56		440.62
	11/21/2005	32.48		438.70
	2/9/2006	27.40		443.78
	5/16/2006	25.60		445.58
	8/9/2006	32.77		438.41
	11/8/2006	32.10		439.08
	2/14/2007	30.94		440.24
5/17/2007	34.14	437.04		
MW-9	12/23/2003	34.03	470.78	436.75
	3/23/2004	30.01		440.77
	5/10/2004	33.61		437.17
	8/4/2004	37.47		433.31
	11/4/2004	37.44		433.34
	5/2/2005	27.73		443.05
	7/19/2005	32.90		437.88
	11/21/2005	34.15		436.63
	2/9/2006	29.44		441.34
	5/16/2006	27.50		443.28
	8/9/2006	35.85		434.93
	11/8/2006	34.18		436.60
	2/14/2007	34.00		436.78
	5/17/2007	36.88		433.90
MW-10	12/23/2003	33.80	471.63	437.83
	3/23/2004	28.68		442.95
	5/10/2004	32.15		439.48

TABLE 1
WELL AND GROUNDWATER ELEVATIONS
TESORO - LIVERMORE, 67076

Monitoring Well	Date of Measurement	Depth to Water (feet below casing)	PVC Casing Elevation^(a) (feet MSL)	Water Table Elevation^(b) (feet MSL)
MW-10 (cont.)	8/4/2004	36.40	471.63	435.23
	11/4/2004	36.21		435.42
	1/12/2005	31.64		439.99
	5/2/2005	27.01		444.62
	7/19/2005	31.59		440.04
	11/21/2005	32.96		438.67
	2/9/2006	28.36		443.27
	5/16/2006	26.83		444.80
	8/9/2006	34.37		437.26
	11/8/2006	33.41		438.22
	2/14/2007	32.81		438.82
	5/17/2007	35.85		435.78
VW-2	8/4/2004	34.13	473.28	439.15
	11/4/2004	34.75		438.53
	1/12/2005	29.35		443.93
	5/2/2005	25.34		447.94
	7/19/2005	29.76		443.52
	11/21/2005	31.81		441.47
	2/9/2006	27.21		446.07
	5/17/2006	25.26		448.02
	8/9/2006	31.74		441.54
	11/8/2006	33.52		439.76
	2/14/2007	30.77		442.51
	5/17/2007	33.17		440.11
VW-3	8/4/2004	32.89	474.38	441.49
	11/4/2004	34.78		439.60
	1/12/2005	29.51		444.87
	5/2/2005	24.79		449.59
	7/19/2005	28.91		445.47
	11/21/2005	31.07		443.31
	2/9/2006	26.60		447.78
	5/16/2006	24.19		450.19
	8/9/2006	30.53		443.85
	11/8/2006	31.62		442.76

TABLE 1
WELL AND GROUNDWATER ELEVATIONS
TESORO - LIVERMORE, 67076

Monitoring Well	Date of Measurement	Depth to Water (feet below casing)	PVC Casing Elevation ^(a) (feet MSL)	Water Table Elevation ^(b) (feet MSL)
VW-3 (cont.)	2/14/2007	30.48		443.90
	5/17/2007	31.70		442.68
TP-1	7/19/2005	29.91	472.82	442.91
	11/21/2005	32.28		440.54
	2/9/2006	28.02		444.80
	5/17/2006	25.18		447.64
	8/9/2006	32.81		440.01
	11/8/2006	32.02		440.80
	2/14/2007	33.59		439.23
	5/17/2007	33.52		439.30
TP-2	7/19/2005	29.67	472.93	443.26
	11/21/2005	31.43		441.50
	2/9/2006	27.27		445.66
	5/17/2006	25.00		447.93
	8/9/2006	31.74		441.19
	11/8/2006	32.80		440.13
	2/14/2007	30.32		442.61
	5/17/2007	33.28		439.65
MW-A	1/17/1999	30.13	NM ^(c)	NM
MW-B	1/17/1999	30.29	NM	NM
MW-C	1/17/1999	30.60	NM	NM
MW-D	1/17/1999	31.32	NM	NM
MW-E	1/17/1999	31.36	NM	NM
MW-W	1/17/1999	30.91	NM	NM

(a) Elevation of PVC well casing (north edge) surveyed relative to mean sea level (MSL).

Wells were surveyed by Cross Land Surveying, Inc., per AB 2886 requirements on 31 August 2005.

Benchmark K2-741, elevation is 467.835 feet above MSL.

(b) Potentiometric Surface Elevation = (Casing Elevation - Depth to Water) + (0.89)(Free Product Thickness) assuming a free product specific gravity of 0.89.

(c) NM = Well not surveyed.

TABLE 2

**GROUNDWATER MONITORING ANALYTICAL RESULTS
TESORO - LIVERMORE, 67076**

Monitoring Well	Sample Date ^(a)	TPHg ^(b) (µg/l)	Benzene ^(b) (µg/l)	Toluene ^(b) (µg/l)	Ethylbenzene ^(b) (µg/l)	Xylenes ^(b) (µg/l)	MTBE ^(b) (µg/l)	DIPE ^(b) (µg/l)	ETBE ^(b) (µg/l)	TAME ^(b) (µg/l)	TBA ^(b) (µg/l)	Methanol ^(b) (µg/l)	Ethanol ^(b) (µg/l)	1,2-DCA ^(b) (µg/l)	EDB ^(b) (µg/l)
MW-1	6/1/1993	27,000	2,200	400	ND<0.5 ^(d)	4,900	-(e)	-	-	-	-	-	-	-	-
	6/22/1993	87,000	8,000	10,000	260	10,000	-	-	-	-	-	-	-	-	-
	10/6/1993	40,000	4,700	6,500	740	5,300	-	-	-	-	-	-	-	-	-
	1/13/1994	9,400	1,300	9,500	110	850	-	-	-	-	-	-	-	-	-
	3/30/1994	-	-	-	-	-	-	-	-	-	-	-	-	-	-
	4/25/1994	11,000	1,500	1,800	290	1,700	-	-	-	-	-	-	-	-	-
	8/12/1994	11,000	550	330	260	1,400	-	-	-	-	-	-	-	-	-
	12/14/1994	11,000	1,000	1,200	320	1,500	-	-	-	-	-	-	-	-	-
	2/10/1995	9,300	1,200	1,500	280	1,500	-	-	-	-	-	-	-	-	-
	6/15/1995	140	5.6	ND<0.5	ND<0.5	ND<0.5	-	-	-	-	-	-	-	-	-
	9/26/1995	410	140	ND<0.5	ND<0.5	43	-	-	-	-	-	-	-	-	-
	12/15/1995	740	250	ND<1.3	ND<1.3	87	-	-	-	-	-	-	-	-	-
	3/21/1996	ND<50	0.52	ND<0.5	ND<0.5	0.51	-	-	-	-	-	-	-	-	-
	6/13/1996	240	ND<0.5	ND<0.5	ND<0.5	ND<0.5	-	-	-	-	-	-	-	-	-
	9/16/1996	720	70	ND<0.5	1.0	5.1	ND<5	-	-	-	-	-	-	-	-
	12/2/1996	ND<50	ND<0.5	ND<0.5	ND<0.5	ND<0.5	ND<5	-	-	-	-	-	-	-	-
	3/7/1997	600	6.7	ND<0.5	1.2	1.8	ND<5	-	-	-	-	-	-	-	-
	6/12/1997	18,000	180	800	410	1,800	ND<5	-	-	-	-	-	-	-	-
	9/29/1997	350	120	1.5	ND<0.5	12	ND<5	-	-	-	-	-	-	-	-
	12/1/1997	ND<50	7.0	ND<0.5	ND<0.5	ND<0.5	ND<5	-	-	-	-	-	-	-	-
	3/19/1998	ND<50	ND<0.5	ND<0.5	ND<0.5	ND<0.5	ND<5	-	-	-	-	-	-	-	-
	5/29/1998	ND<50	ND<0.5	ND<0.5	ND<0.5	ND<0.5	ND<5	-	-	-	-	-	-	-	-
	9/15/1998	ND<50	ND<0.5	ND<0.5	ND<0.5	ND<0.5	ND<5	-	-	-	-	-	-	-	-
	11/30/1998	ND<50	ND<0.5	ND<0.5	ND<0.5	ND<0.5	ND<5	-	-	-	-	-	-	-	-
	1/17/1999	ND<50	ND<0.5	ND<0.5	ND<0.5	ND<0.5	ND<5	-	-	-	-	-	-	-	-
	6/10/1999	ND<50	ND<0.5	ND<0.5	ND<0.5	ND<0.5	ND<5	-	-	-	-	-	-	-	-
9/7/1999	ND<50	ND<0.5	ND<0.5	ND<0.5	ND<0.5	ND<5	-	-	-	-	-	-	-	-	
12/13/1999	ND<50	ND<0.5	ND<0.5	ND<0.5	ND<0.5	ND<5	-	-	-	-	-	-	-	-	
3/13/2000	ND<50	ND<0.5	ND<0.5	ND<0.5	ND<0.5	ND<5	-	-	-	-	-	-	-	-	
6/12/2000	ND<50	ND<0.5	ND<0.5	ND<0.5	ND<0.5	ND<5	-	-	-	-	-	-	-	-	

TABLE 2

**GROUNDWATER MONITORING ANALYTICAL RESULTS
TESORO - LIVERMORE, 67076**

Monitoring Well	Sample Date ^(a)	TPHg ^(b) (µg/l)	Benzene ^(b) (µg/l)	Toluene ^(b) (µg/l)	Ethylbenzene ^(b) (µg/l)	Xylenes ^(b) (µg/l)	MTBE ^(b) (µg/l)	DIPE ^(b) (µg/l)	ETBE ^(b) (µg/l)	TAME ^(b) (µg/l)	TBA ^(b) (µg/l)	Methanol ^(b) (µg/l)	Ethanol ^(b) (µg/l)	1,2-DCA ^(b) (µg/l)	EDB ^(b) (µg/l)
MW-1 (cont.)	11/10/2000	ND<50	ND<0.5	ND<0.5	ND<0.5	ND<0.5	ND<0.5	-	-	-	-	-	-	-	-
	12/31/2000	ND<50	ND<0.5	ND<0.5	ND<0.5	ND<0.5	ND<0.5	-	-	-	-	-	-	-	-
	3/27/2001	ND<50	ND<0.5	ND<0.5	ND<0.5	ND<0.5	ND<0.5	-	-	-	-	-	-	-	-
	6/30/2001	ND<50	ND<0.5	ND<0.5	ND<0.5	ND<0.5	ND<0.5	-	-	-	-	-	-	-	-
	9/26/2001	90	ND<0.5	ND<0.5	ND<0.5	ND<0.5	ND<0.5	-	-	-	-	-	-	-	-
	12/18/2001	ND<50	ND<0.5	ND<0.5	ND<0.5	ND<0.5	ND<0.5	-	-	-	-	-	-	-	-
	11/4/2004	4,500	2.5	5.8	79	140	ND<0.5	ND<0.5	ND<0.5	ND<0.5	ND<5	ND<50	ND<5	ND<0.5	ND<0.5
	1/12/2005	ND<50	ND<0.5	ND<0.5	ND<0.5	ND<0.5	ND<0.5	ND<0.5	ND<0.5	ND<0.5	ND<5	ND<50	ND<5	ND<0.5	ND<0.5
	5/2/2005	78	0.80	0.70	0.86	2.4	ND<0.5	ND<0.5	ND<0.5	ND<0.5	ND<5	ND<40	ND<5	ND<0.5	ND<0.5
	7/19/2005	290	ND<0.5	ND<0.5	4.0	4.1	ND<0.5	ND<0.5	ND<0.5	ND<0.5	ND<5	ND<50	ND<5	ND<0.5	ND<0.5
	11/21/2005	370	ND<0.5	ND<0.5	0.75	1.3	ND<0.5	ND<0.5	ND<0.5	ND<0.5	ND<5	ND<50	ND<5	ND<0.5	ND<0.5
	2/9/2006	140	ND<0.5	ND<0.5	0.67	1.0	ND<0.5	ND<0.5	ND<0.5	ND<0.5	ND<5	ND<50	ND<5	ND<0.5	ND<0.5
	5/16/2006	ND<50	ND<0.5	ND<0.5	ND<0.5	ND<0.5	ND<0.5	ND<0.5	ND<0.5	ND<0.5	ND<5	ND<50	ND<5	ND<0.5	ND<0.5
	8/9/2006	100	ND<0.5	ND<0.5	ND<0.5	ND<0.5	ND<0.5	ND<0.5	ND<0.5	ND<0.5	ND<5	ND<50	ND<5	ND<0.5	ND<0.5
	11/8/2006	400	ND<0.5	ND<0.5	1.7	1.9	ND<0.5	ND<0.5	ND<0.5	ND<0.5	ND<5	ND<50	ND<5	ND<0.5	ND<0.5
	2/14/2007	410	ND<0.5	ND<0.5	2.2	2.2	ND<0.5	ND<0.5	ND<0.5	ND<0.5	ND<5	ND<50	ND<5	ND<0.5	ND<0.5
5/17/2007	2,300	ND<0.5	0.66	17	21	ND<0.5	ND<0.5	ND<0.5	ND<0.5	ND<5	ND<50	ND<8	-	-	
MW-2	6/1/1993	170,000	20,000	21,000	3,300	18,000	-	-	-	-	-	-	-	-	-
	6/22/1993	160,000	19,000	22,000	3,500	18,000	-	-	-	-	-	-	-	-	-
	10/6/1993	110,000	17,000	17,000	3,000	15,000	-	-	-	-	-	-	-	-	-
	1/13/1994	93,000	20,000	19,000	2,300	14,000	-	-	-	-	-	-	-	-	-
	3/30/1994	-	-	-	-	-	-	-	-	-	-	-	-	-	-
	4/25/1994	41,000	9,600	7,300	840	7,800	-	-	-	-	-	-	-	-	-
	8/12/1994	59,000	11,000	11,000	2,300	11,000	-	-	-	-	-	-	-	-	-
	12/14/1994	63,000	13,000	13,000	2,200	12,000	-	-	-	-	-	-	-	-	-
	2/10/1995	63,000	12,000	12,000	2,200	11,000	-	-	-	-	-	-	-	-	-
	6/15/1995	61,000	11,000	12,000	1,900	11,000	-	-	-	-	-	-	-	-	-
	9/26/1995	61,000	9,400	11,000	2,300	12,000	-	-	-	-	-	-	-	-	-
	12/15/1995	48,000	8,000	8,300	2,200	12,000	-	-	-	-	-	-	-	-	-
	3/21/1996	48,000	8,000	7,700	2,400	12,000	-	-	-	-	-	-	-	-	-

TABLE 2

**GROUNDWATER MONITORING ANALYTICAL RESULTS
TESORO - LIVERMORE, 67076**

Monitoring Well	Sample Date ^(a)	TPHg ^(b) (µg/l)	Benzene ^(b) (µg/l)	Toluene ^(b) (µg/l)	Ethylbenzene ^(b) (µg/l)	Xylenes ^(b) (µg/l)	MTBE ^(b) (µg/l)	DIPE ^(b) (µg/l)	ETBE ^(b) (µg/l)	TAME ^(b) (µg/l)	TBA ^(b) (µg/l)	Methanol ^(b) (µg/l)	Ethanol ^(b) (µg/l)	1,2-DCA ^(b) (µg/l)	EDB ^(b) (µg/l)
MW-2 (cont.)	6/13/1996	33,000	7,300	8,800	1,900	12,000	ND<250	-	-	-	-	-	-	-	-
	9/16/1996	8,600	510	640	180	1,300	ND<250	-	-	-	-	-	-	-	-
	12/2/1996	29,000	4,400	4,000	1,300	6,100	ND<130	-	-	-	-	-	-	-	-
	3/7/1997	13,000	1,800	1,100	270	2,000	ND<250	-	-	-	-	-	-	-	-
	6/12/1997	68,000	7,800	6,600	2,300	11,000	ND<500	-	-	-	-	-	-	-	-
	9/29/1997	15,000	1,500	97	740	1,800	ND<250	-	-	-	-	-	-	-	-
	12/1/1997	13,000	900	37	860	2,400	ND<250	-	-	-	-	-	-	-	-
	3/19/1998	42,000	5,000	3,600	2,000	8,300	ND<250	-	-	-	-	-	-	-	-
	5/29/1998	68,000	5,600	4,700	2,400	11,000	ND<250	-	-	-	-	-	-	-	-
	9/15/1998	36,000	3,900	1,200	1,400	7,800	ND<250	-	-	-	-	-	-	-	-
	11/30/1998	16,000	2,200	59	1,200	1,500	ND<250	-	-	-	-	-	-	-	-
	1/17/1999	30,000	4,000	2,200	2,100	9,500	ND<250	-	-	-	-	-	-	-	-
	6/10/1999	70,000	6,300	1,800	3,600	14,000	ND<500	-	-	-	-	-	-	-	-
	9/7/1999	42,000	3,800	840	1,900	8,000	150	-	-	-	-	-	-	-	-
	12/13/1999	14,000	1,400	87	690	110	34	-	-	-	-	-	-	-	-
	3/13/2000	38,000	2,400	2,300	1,600	6,400	2,400	-	-	-	-	-	-	-	-
	6/12/2000	56,000	4,000	950	2,300	7,200	ND<50	-	-	-	-	-	-	-	-
	11/10/2000	35,000	5,100	850	1,500	3,200	230	-	-	-	-	-	-	-	-
	12/31/2000	21,000	3,200	420	1,300	1,200	440	-	-	-	-	-	-	-	-
	3/27/2001	3,500	420	64	16	280	120	-	-	-	-	-	-	-	-
	6/30/2001	1,200	88	4.5	65	37	29	-	-	-	-	-	-	-	-
	9/26/2001	53,000	8,500	1,500	2,400	4,600	270	-	-	-	-	-	-	-	-
	12/18/2001	26,000	5,400	900	1,500	2,200	430	-	-	-	-	-	-	-	-
1/22/2002	-	-	-	-	-	-	-	-	-	-	-	-	-	-	
3/18/2002	4,200	240	7.3	200	53	89	-	-	-	-	-	-	-	-	
6/5/2002	25,000	3,500	390	1,400	2,400	550	-	-	-	-	-	-	-	-	
8/21/2002	10,000	1,200	32	620	300	160	-	-	-	-	-	-	-	-	
12/3/2002	3,700	110	2.5	130	11	29	-	-	-	-	-	-	-	-	
3/4/2003	8,700	1,100	77	350	540	230	ND<0.5	ND<0.5	ND<10	21	ND<150	ND<5	ND<0.5	ND<0.5	
6/10/2003	6,300	660	35	190	120	410	ND<2.5	ND<2.5	ND<5	ND<25	ND<250	ND<25	ND<2.5	ND<2.5	

TABLE 2

**GROUNDWATER MONITORING ANALYTICAL RESULTS
TESORO - LIVERMORE, 67076**

Monitoring Well	Sample Date ^(a)	TPH ^(b) (µg/l)	Benzene ^(b) (µg/l)	Toluene ^(b) (µg/l)	Ethylbenzene ^(b) (µg/l)	Xylenes ^(b) (µg/l)	MTBE ^(b) (µg/l)	DIPE ^(b) (µg/l)	ETBE ^(b) (µg/l)	TAME ^(b) (µg/l)	TBA ^(b) (µg/l)	Methanol ^(b) (µg/l)	Ethanol ^(b) (µg/l)	1,2-DCA ^(b) (µg/l)	EDB ^(b) (µg/l)
MW-2 (cont.)	9/9/2003	6,900	500	ND<20	360	29	9,500	ND<20	ND<20	60	ND<200	ND<2,000	ND<200	ND<20	ND<20
	12/23/2003	22,000	4,900	1,300	720	2,300	1,700	ND<20	ND<20	21	ND<200	ND<2,000	ND<200	ND<20	ND<20
	3/23/2004	45,000	5,200	1,500	1,800	5,000	750	ND<20	ND<20	34	ND<200	ND<2,000	ND<200	ND<20	ND<20
	5/10/2004	7,300	1,000	51	240	290	1,800	ND<5	ND<5	14	ND<50	ND<500	ND<50	ND<5	ND<5
	8/4/2004	45,000	7,200	1,900	1,800	5,100	2,500	ND<25	ND<25	31	ND<250	ND<2,500	ND<250	ND<25	ND<25
	11/4/2004	27,000	4,400	1,100	840	2,200	3,500	ND<9	ND<9	29	ND<50	ND<900	ND<90	ND<9	ND<9
	1/12/2005	16,000	1,900	640	570	1,500	1,900	ND<4	ND<4	19	28 ^(f)	ND<400	ND<40	ND<4	ND<4
	5/2/2005	44,000	5,200	1,100	1,800	4,800	2,200	ND<20	ND<20	30	ND<200	ND<2,000	ND<200	ND<20	ND<20
	7/20/2005	21,000	3,000	500	1,000	1,500	4,400	ND<7	ND<7	32	74 ^(f)	ND<700	ND<70	ND<7	ND<7
	11/22/2005	33,000	4,400	880	1,200	2,600	2,200	ND<9	ND<9	19	480	ND<900	ND<90	ND<9	ND<9
	2/9/2006	25,000	3,300	720	1,300	2,200	2,500	ND<7	ND<7	27	490	ND<700	ND<70	ND<7	ND<7
	5/17/2006	22,000	3,200	240	1,200	2,100	4,600	ND<7	ND<7	46	1000	ND<700	ND<70	ND<7	ND<7
	8/9/2006	34,000	4,200	830	1,300	2,400	2,900	ND<9	ND<9	25	1600	ND<900	ND<90	ND<9	ND<9
	11/8/2006	27,000	3,600	300	1,200	1,800	1,500	ND<9	ND<9	15	1100	ND<900	ND<90	ND<9	ND<9
	2/14/2007	36,000	4,600	740	1,600	2,100	1,800	ND<5	ND<5	20	910	ND<700	ND<50	ND<5	ND<5
5/17/2007	37,000	7,400	680	1,900	2,400	3,000	ND<9	ND<9	24	2,600	ND<4,000	ND<90	-	-	
MW-3	6/1/1993	270	4.6	ND<0.5	ND<0.5	1.9	-	-	-	-	-	-	-	-	-
	6/22/1993	160	8.2	ND<0.5	ND<0.5	0.72	-	-	-	-	-	-	-	-	-
	10/6/093	740	57	110	24	120	-	-	-	-	-	-	-	-	-
	1/13/1994	83	2.6	0.67	0.78	4.2	-	-	-	-	-	-	-	-	-
	3/30/1994	-	-	-	-	-	-	-	-	-	-	-	-	-	-
	4/25/1994	60	0.75	3.2	0.50	3.6	-	-	-	-	-	-	-	-	-
	8/12/1994	310	7.3	14	2.6	13	-	-	-	-	-	-	-	-	-
	12/14/1994	75	ND<0.5	ND<0.5	ND<0.5	ND<0.5	-	-	-	-	-	-	-	-	-
	2/10/1995	96	1.4	ND<0.5	ND<0.5	1.8	-	-	-	-	-	-	-	-	-
	6/15/1995	ND<50	ND<0.5	ND<0.5	ND<0.5	ND<0.5	-	-	-	-	-	-	-	-	-
	9/26/1995	ND<50	ND<0.5	ND<0.5	ND<0.5	ND<0.5	-	-	-	-	-	-	-	-	-
	12/15/1995	ND<50	ND<0.5	ND<0.5	ND<0.5	ND<0.5	-	-	-	-	-	-	-	-	-
	11/4/2004	ND<50	ND<0.5	ND<0.5	ND<0.5	ND<0.5	6.4	ND<0.5	ND<0.5	ND<0.5	ND<5	ND<50	ND<5	ND<0.5	ND<0.5
	1/12/2005	ND<50	ND<0.5	ND<0.5	ND<0.5	ND<0.5	4.4	ND<0.5	ND<0.5	ND<0.5	ND<5	ND<50	ND<5	ND<0.5	ND<0.5

TABLE 2

**GROUNDWATER MONITORING ANALYTICAL RESULTS
TESORO - LIVERMORE, 67076**

Monitoring Well	Sample Date ^(a)	TPHg ^(b) (µg/l)	Benzene ^(b) (µg/l)	Toluene ^(b) (µg/l)	Ethylbenzene ^(b) (µg/l)	Xylenes ^(b) (µg/l)	MTBE ^(b) (µg/l)	DIPE ^(b) (µg/l)	ETBE ^(b) (µg/l)	TAME ^(b) (µg/l)	TBA ^(b) (µg/l)	Methanol ^(b) (µg/l)	Ethanol ^(b) (µg/l)	1,2-DCA ^(b) (µg/l)	EDB ^(b) (µg/l)
MW-3 (cont.)	5/2/2005	140	ND<0.5	ND<0.5	ND<0.5	0.81	ND<0.5	ND<0.5	ND<0.5	ND<0.5	ND<5	ND<50	ND<5	ND<0.5	ND<0.5
	7/19/2005	ND<50	ND<0.5	ND<0.5	ND<0.5	ND<0.5	1.6	ND<0.5	ND<0.5	ND<0.5	ND<5	ND<50	ND<5	ND<0.5	ND<0.5
	11/21/2005	ND<50	ND<0.5	ND<0.5	ND<0.5	ND<0.5	3.4	ND<0.5	ND<0.5	ND<0.5	ND<5	ND<50	ND<5	ND<0.5	ND<0.5
	2/9/2006	ND<50	ND<0.5	ND<0.5	ND<0.5	ND<0.5	2.9	ND<0.5	ND<0.5	ND<0.5	ND<5	ND<50	ND<5	ND<0.5	ND<0.5
	5/16/2006	ND<50	ND<0.5	ND<0.5	ND<0.5	ND<0.5	ND<0.5	ND<0.5	ND<0.5	ND<0.5	ND<5	ND<50	ND<5	ND<0.5	ND<0.5
	8/9/2006	ND<50	ND<0.5	ND<0.5	ND<0.5	ND<0.5	1.4	ND<0.5	ND<0.5	ND<0.5	ND<5	ND<50	ND<5	ND<0.5	ND<0.5
	11/8/2006	ND<50	ND<0.5	ND<0.5	ND<0.5	ND<0.5	0.71	ND<0.5	ND<0.5	ND<0.5	ND<5	ND<50	ND<5	ND<0.5	ND<0.5
	2/14/2007	ND<50	ND<0.5	ND<0.5	ND<0.5	ND<0.5	1.4	ND<0.5	ND<0.5	ND<0.5	ND<5	ND<50	ND<5	ND<0.5	ND<0.5
	5/17/2007	ND<50	ND<0.5	ND<0.5	ND<0.5	ND<0.5	0.54	ND<0.5	ND<0.5	ND<0.5	ND<5	ND<50	ND<5	-	-
MW-4	3/30/1994	120	4.2	15	2.5	26	-	-	-	-	-	-	-	-	-
	4/25/1994	65	ND<0.5	1.8	ND<0.5	2.1	-	-	-	-	-	-	-	-	-
	8/12/1994	ND<50	ND<0.5	ND<0.5	ND<0.5	ND<0.5	-	-	-	-	-	-	-	-	-
	12/14/1994	ND<50	ND<0.5	ND<0.5	ND<0.5	ND<0.5	-	-	-	-	-	-	-	-	-
	2/10/1995	ND<50	ND<0.5	ND<0.5	ND<0.5	ND<0.5	-	-	-	-	-	-	-	-	-
	6/15/1995	ND<50	ND<0.5	ND<0.5	ND<0.5	ND<0.5	-	-	-	-	-	-	-	-	-
	9/26/1995	ND<50	ND<0.5	ND<0.5	ND<0.5	ND<0.5	-	-	-	-	-	-	-	-	-
	12/15/1995	ND<50	ND<0.5	ND<0.5	ND<0.5	ND<0.5	-	-	-	-	-	-	-	-	-
	11/4/2004	ND<50	ND<0.5	ND<0.5	ND<0.5	ND<0.5	ND<0.5	ND<0.5	ND<0.5	ND<0.5	ND<5	ND<50	ND<5	ND<0.5	ND<0.5
	1/12/2005	ND<50	ND<0.5	ND<0.5	ND<0.5	ND<0.5	ND<0.5	ND<0.5	ND<0.5	ND<0.5	ND<5	ND<50	ND<5	ND<0.5	ND<0.5
	5/2/2005	ND<50	1.8	1.1	1.4	4.4	ND<0.5	ND<0.5	ND<0.5	ND<0.5	ND<5	ND<50	ND<5	ND<0.5	ND<0.5
	7/19/2005	ND<50	ND<0.5	ND<0.5	ND<0.5	ND<0.5	ND<0.5	ND<0.5	ND<0.5	ND<0.5	ND<5	ND<50	ND<5	ND<0.5	ND<0.5
	11/21/2005	ND<50	ND<0.5	ND<0.5	ND<0.5	ND<0.5	ND<0.5	ND<0.5	ND<0.5	ND<0.5	ND<5	ND<50	ND<5	ND<0.5	ND<0.5
	2/9/2006	ND<50	ND<0.5	ND<0.5	ND<0.5	ND<0.5	ND<0.5	ND<0.5	ND<0.5	ND<0.5	ND<5	ND<50	ND<5	ND<0.5	ND<0.5
	5/16/2006	ND<50	ND<0.5	ND<0.5	ND<0.5	ND<0.5	ND<0.5	ND<0.5	ND<0.5	ND<0.5	ND<5	ND<50	ND<5	ND<0.5	ND<0.5
	8/9/2006	ND<50	ND<0.5	ND<0.5	ND<0.5	ND<0.5	ND<0.5	ND<0.5	ND<0.5	ND<0.5	ND<5	ND<50	ND<5	ND<0.5	ND<0.5
	11/8/2006	ND<50	ND<0.5	ND<0.5	ND<0.5	ND<0.5	ND<0.5	ND<0.5	ND<0.5	ND<0.5	ND<5	ND<50	ND<5	ND<0.5	ND<0.5
2/14/2007	ND<50	ND<0.5	ND<0.5	ND<0.5	ND<0.5	ND<0.5	ND<0.5	ND<0.5	ND<0.5	ND<5	ND<50	ND<5	ND<0.5	ND<0.5	
5/17/2007	ND<50	ND<0.5	ND<0.5	ND<0.5	ND<0.5	ND<0.5	ND<0.5	ND<0.5	ND<0.5	ND<5	ND<50	ND<5	-	-	
MW-5	3/30/1994	7,500	1,300	20	ND<13	160	-	-	-	-	-	-	-	-	-
	4/25/1994	6,500	1,100	41	130	740	-	-	-	-	-	-	-	-	-

TABLE 2

**GROUNDWATER MONITORING ANALYTICAL RESULTS
TESORO - LIVERMORE, 67076**

Monitoring Well	Sample Date ^(a)	TPHg ^(b) (µg/l)	Benzene ^(b) (µg/l)	Toluene ^(b) (µg/l)	Ethylbenzene ^(b) (µg/l)	Xylenes ^(b) (µg/l)	MTBE ^(b) (µg/l)	DIPE ^(b) (µg/l)	ETBE ^(b) (µg/l)	TAME ^(b) (µg/l)	TBA ^(b) (µg/l)	Methanol ^(b) (µg/l)	Ethanol ^(b) (µg/l)	1,2-DCA ^(b) (µg/l)	EDB ^(b) (µg/l)
MW-5 (cont.)	8/12/1994	4,000	420	2.9	41	98	-	-	-	-	-	-	-	-	-
	12/14/1994	4,800	660	ND<2.5	33	13	-	-	-	-	-	-	-	-	-
	2/10/1995	5,200	490	ND<13	23	19	-	-	-	-	-	-	-	-	-
	6/15/1995	460	ND<0.5	ND<0.5	ND<0.5	ND<0.5	-	-	-	-	-	-	-	-	-
	9/26/1995	1,400	61	ND<0.5	3.1	ND<0.5	-	-	-	-	-	-	-	-	-
	12/15/1995	2,100	77	1.5	10	1.5	-	-	-	-	-	-	-	-	-
	3/21/1996	930	35	2.0	2.0	18	-	-	-	-	-	-	-	-	-
	6/13/1996	610	38	0.72	1.9	2.0	ND<5	-	-	-	-	-	-	-	-
	9/16/1996	380	29	ND<0.5	0.95	ND<0.5	ND<5	-	-	-	-	-	-	-	-
	12/2/1996	200	1.1	0.64	ND<0.5	ND<0.5	ND<5	-	-	-	-	-	-	-	-
	3/7/1997	520	74	ND<0.5	0.58	1.5	ND<5	-	-	-	-	-	-	-	-
	6/12/1997	140	5.3	ND<0.5	ND<0.5	ND<0.5	ND<5	-	-	-	-	-	-	-	-
	9/29/1997	ND<50	ND<0.5	ND<0.5	ND<0.5	ND<0.5	ND<5	-	-	-	-	-	-	-	-
	12/1/1997	ND<50	ND<0.5	ND<0.5	ND<0.5	ND<0.5	ND<5	-	-	-	-	-	-	-	-
	3/19/1998	ND<50	ND<0.5	ND<0.5	ND<0.5	ND<0.5	ND<5	-	-	-	-	-	-	-	-
	5/29/1998	540	4.1	ND<0.5	ND<0.5	0.52	ND<5	-	-	-	-	-	-	-	-
	9/15/1998	67	ND<0.5	ND<0.5	ND<0.5	ND<0.5	ND<5	-	-	-	-	-	-	-	-
	11/30/1998	430	ND<0.5	ND<0.5	ND<0.5	ND<0.5	ND<5	-	-	-	-	-	-	-	-
	1/17/1999	500	ND<0.5	ND<0.5	ND<0.5	ND<0.5	ND<5	-	-	-	-	-	-	-	-
	6/10/1999	66	ND<0.5	ND<0.5	ND<0.5	ND<0.5	ND<5	-	-	-	-	-	-	-	-
	9/7/1999	820	46	1.7	10	21	ND<5	-	-	-	-	-	-	-	-
	12/13/1999	ND<50	ND<0.5	ND<0.5	ND<0.5	ND<0.5	ND<5	-	-	-	-	-	-	-	-
	3/13/2000	270	ND<0.5	ND<0.5	ND<0.5	ND<0.5	ND<5	-	-	-	-	-	-	-	-
6/12/2000	ND<50	ND<0.5	ND<0.5	ND<0.5	ND<0.5	ND<5	-	-	-	-	-	-	-	-	
11/10/2000	2,200	42	1.1	25	30	8.6	-	-	-	-	-	-	-	-	
12/31/2000	1,300	21	ND<0.5	4.3	2.6	10	-	-	-	-	-	-	-	-	
3/27/2001	1,200	11	ND<0.5	2.6	ND<0.5	21	-	-	-	-	-	-	-	-	
6/30/2001	1,400	4.8	ND<0.5	1.5	0.56	14	-	-	-	-	-	-	-	-	
9/26/2001	660	ND<0.5	ND<0.5	ND<0.5	ND<0.5	3.0	-	-	-	-	-	-	-	-	
12/18/2001	240	ND<0.5	ND<0.5	ND<0.5	ND<0.5	ND<0.5	-	-	-	-	-	-	-	-	

TABLE 2

**GROUNDWATER MONITORING ANALYTICAL RESULTS
TESORO - LIVERMORE, 67076**

Monitoring Well	Sample Date ^(a)	TPHg ^(b) (µg/l)	Benzene ^(b) (µg/l)	Toluene ^(b) (µg/l)	Ethylbenzene ^(b) (µg/l)	Xylenes ^(b) (µg/l)	MTBE ^(b) (µg/l)	DIPE ^(b) (µg/l)	ETBE ^(b) (µg/l)	TAME ^(b) (µg/l)	TBA ^(b) (µg/l)	Methanol ^(b) (µg/l)	Ethanol ^(b) (µg/l)	1,2-DCA ^(b) (µg/l)	EDB ^(b) (µg/l)
MW-5 (cont.)	1/22/2002	-	-	-	-	-	-	-	-	-	-	-	-	-	-
	3/18/2002	890	0.65	ND<0.5	ND<0.5	ND<0.5	3.1	-	-	-	-	-	-	-	-
	6/5/2002	-	-	-	-	-	-	-	-	-	-	-	-	-	-
	8/21/2002	2,100	20	ND<0.5	63	4	7	-	-	-	-	-	-	-	-
	12/3/2002	-	-	-	-	-	-	-	-	-	-	-	-	-	-
	3/4/2003	490	10	ND<0.5	2.2	ND<0.5	1.0	ND<0.5	ND<0.5	ND<0.5	ND<5	ND<50	ND<5	ND<0.5	ND<0.5
	6/10/2003	-	-	-	-	-	-	-	-	-	-	-	-	-	-
	9/9/2003	ND<50	ND<0.5	ND<0.5	ND<0.5	ND<0.5	ND<0.5	ND<0.5	ND<0.5	ND<0.5	ND<5	ND<50	ND<5	ND<0.5	ND<0.5
	12/23/2003	-	-	-	-	-	-	-	-	-	-	-	-	-	-
	3/23/2004	440	2.3	ND<0.5	1.0	5.9	2.4	ND<0.5	ND<0.5	ND<0.5	ND<5	ND<50	ND<5	ND<0.5	ND<0.5
	5/10/2004	-	-	-	-	-	-	-	-	-	-	-	-	-	-
	8/4/2004	160	ND<0.5	ND<0.5	ND<0.5	0.71	0.94	ND<0.5	ND<0.5	ND<0.5	ND<5	ND<50	ND<5	ND<0.5	ND<0.5
	11/4/2004	290	0.74	ND<0.5	0.58	1.3	0.61	ND<0.5	ND<0.5	ND<0.5	ND<5	ND<50	ND<5	ND<0.5	ND<0.5
	1/12/2005	300	ND<0.5	ND<0.5	0.51	1.6	0.73	ND<0.5	ND<0.5	ND<0.5	ND<5	ND<50	ND<5	ND<0.5	ND<0.5
	5/2/2005	120	ND<0.5	ND<0.5	ND<0.5	ND<0.5	ND<0.5	ND<0.5	ND<0.5	ND<0.5	ND<5	ND<50	ND<5	ND<0.5	ND<0.5
	7/20/2005	330	ND<0.5	ND<0.5	ND<0.5	ND<0.5	1.1	ND<0.5	ND<0.5	ND<0.5	ND<5	ND<50	ND<5	ND<0.5	ND<0.5
	11/21/2005	210	ND<0.5	ND<0.5	ND<0.5	ND<0.5	1.2	ND<0.5	ND<0.5	ND<0.5	ND<5	ND<50	ND<5	ND<0.5	ND<0.5
	2/9/2006	ND<50	ND<0.5	ND<0.5	0.63	1.0	1.0	ND<0.5	ND<0.5	ND<0.5	ND<5	ND<50	ND<5	ND<0.5	ND<0.5
	5/16/2006	140	ND<0.5	ND<0.5	ND<0.5	ND<0.5	0.79	ND<0.5	ND<0.5	ND<0.5	ND<5	ND<50	ND<5	ND<0.5	ND<0.5
	8/9/2006	220	ND<0.5	ND<0.5	ND<0.5	ND<0.5	7.8	ND<0.5	ND<0.5	ND<0.5	ND<5	ND<50	ND<5	ND<0.5	ND<0.5
11/8/2006	120	ND<0.5	ND<0.5	ND<0.5	ND<0.5	2.4	ND<0.5	ND<0.5	ND<0.5	ND<5	ND<50	ND<5	ND<0.5	ND<0.5	
2/14/2007	200	ND<0.5	ND<0.5	ND<0.5	1.1	2.1	ND<0.5	ND<0.5	ND<0.5	ND<5	ND<50	ND<5	ND<0.5	ND<0.5	
5/17/2007	140	ND<0.5	ND<0.5	ND<0.5	ND<0.5	1.4	ND<0.5	ND<0.5	ND<0.5	ND<5	ND<50	ND<5	-	-	
MW-6	3/30/1994	63,000	21,000	8,600	1,700	12,000	-	-	-	-	-	-	-	-	-
	4/25/1994	77,000	22,000	12,000	2,300	16,000	-	-	-	-	-	-	-	-	-
	8/12/1994	65,000	12,000	8,100	2,200	16,000	-	-	-	-	-	-	-	-	-
	12/14/1994	65,000	18,000	9,500	2,200	14,000	-	-	-	-	-	-	-	-	-
	2/10/1995	63,000	21,000	8,400	2,000	14,000	-	-	-	-	-	-	-	-	-
	6/15/1995	75,000	20,000	11,000	2,100	15,000	-	-	-	-	-	-	-	-	-
	9/26/1995	62,000	15,000	9,600	1,700	12,000	-	-	-	-	-	-	-	-	-

TABLE 2

**GROUNDWATER MONITORING ANALYTICAL RESULTS
TESORO - LIVERMORE, 67076**

Monitoring Well	Sample Date ^(a)	TPHg ^(b) (µg/l)	Benzene ^(b) (µg/l)	Toluene ^(b) (µg/l)	Ethylbenzene ^(b) (µg/l)	Xylenes ^(b) (µg/l)	MTBE ^(b) (µg/l)	DIPE ^(b) (µg/l)	ETBE ^(b) (µg/l)	TAME ^(b) (µg/l)	TBA ^(b) (µg/l)	Methanol ^(b) (µg/l)	Ethanol ^(b) (µg/l)	1,2-DCA ^(b) (µg/l)	EDB ^(b) (µg/l)
MW-6 (cont.)	12/15/1995	61,000	15,000	9,000	2,300	15,000	-	-	-	-	-	-	-	-	-
	3/21/1996	65,000	18,000	9,800	2,400	16,000	-	-	-	-	-	-	-	-	-
	6/13/1996	29,000	8,600	3,300	2,200	12,000	ND<250	-	-	-	-	-	-	-	-
	9/16/1996	42,000	6,400	1,800	2,100	11,000	ND<250	-	-	-	-	-	-	-	-
	12/2/1996	28,000	3,000	1,100	970	8,300	ND<500	-	-	-	-	-	-	-	-
	3/7/1997	12,000	2,000	190	520	2,300	ND<250	-	-	-	-	-	-	-	-
	6/12/1997	37,000	3,900	470	1,600	6,200	ND<100	-	-	-	-	-	-	-	-
	9/29/1997	34,000	3,500	370	1,600	5,200	ND<100	-	-	-	-	-	-	-	-
	12/1/1997	20,000	2,100	ND<10	1,200	2,200	ND<100	-	-	-	-	-	-	-	-
	3/19/1998	24,000	2,900	460	1,100	3,400	ND<100	-	-	-	-	-	-	-	-
	5/29/1998	38,000	3,500	700	1,800	5,200	ND<100	-	-	-	-	-	-	-	-
	9/15/1998	22,000	1,900	110	1,400	3,000	ND<100	-	-	-	-	-	-	-	-
	11/30/1998	9,900	770	16	820	710	ND<100	-	-	-	-	-	-	-	-
	1/17/1999	14,000	2,200	160	1,700	3,600	ND<100	-	-	-	-	-	-	-	-
	6/10/1999	22,000	1,600	160	1,400	2,900	5.5	-	-	-	-	-	-	-	-
	9/7/1999	17,000	1,400	33	1,300	1,800	ND<50	-	-	-	-	-	-	-	-
	12/13/1999	16,000	790	9.2	840	780	ND<25	-	-	-	-	-	-	-	-
	3/13/2000	16,000	790	85	780	1,600	ND<25	-	-	-	-	-	-	-	-
	6/12/2000	24,000	1,100	150	1,300	2,300	5,600	-	-	-	-	-	-	-	-
	11/10/2000	13,000	440	7	760	350	1,000	-	-	-	-	-	-	-	-
	12/31/2000	12,000	680	8	820	190	1,400	-	-	-	-	-	-	-	-
	3/27/2001	14,000	330	17	940	670	380	-	-	-	-	-	-	-	-
	6/30/2001	750	45	0.93	47	14	54	-	-	-	-	-	-	-	-
	9/26/2001	-	-	-	-	-	-	-	-	-	-	-	-	-	-
	12/18/2001	43,000	3,800	350	1,900	3,000	900	-	-	-	-	-	-	-	-
1/22/2002	-	-	-	-	-	-	-	-	-	-	-	-	-	-	
3/18/2002	33,000	2,600	120	1,800	2,800	740	-	-	-	-	-	-	-	-	
6/5/2002	10,000	1,100	16	700	180	600	-	-	-	-	-	-	-	-	
8/21/2002	10,000	1,200	23	710	290	370	-	-	-	-	-	-	-	-	
12/3/2002	16,000	1,700	63	970	630	1,500	-	-	-	-	-	-	-	-	

TABLE 2

**GROUNDWATER MONITORING ANALYTICAL RESULTS
TESORO - LIVERMORE, 67076**

Monitoring Well	Sample Date ^(a)	TPHg ^(b) (µg/l)	Benzene ^(b) (µg/l)	Toluene ^(b) (µg/l)	Ethylbenzene ^(b) (µg/l)	Xylenes ^(b) (µg/l)	MTBE ^(b) (µg/l)	DIPE ^(b) (µg/l)	ETBE ^(b) (µg/l)	TAME ^(b) (µg/l)	TBA ^(b) (µg/l)	Methanol ^(b) (µg/l)	Ethanol ^(b) (µg/l)	1,2-DCA ^(b) (µg/l)	EDB ^(b) (µg/l)
MW-6 (cont.)	3/4/2003	16,000	1,700	25	1,200	40	7,700	ND<20	ND<20	ND<70	ND<200	ND<2,000	ND<200	ND<20	ND<20
	6/10/2003	9,500	860	15	380	47	2,600	ND<5	ND<5	18	ND<50	ND<500	ND<50	ND<5	ND<5
	9/9/2003	11,000	1,000	16	630	120	2,500	ND<5	ND<5	20	52	ND<500	ND<50	ND<5	ND<5
	12/23/2003	18,000	2,100	41	1,100	390	4,900	ND<10	ND<10	42	ND<100	ND<1,000	ND<100	ND<10	ND<10
	3/23/2004	24,000	1,400	71	1,500	2,000	7,500	ND<20	ND<20	66	ND<200	ND<2,000	ND<200	ND<20	ND<20
	5/10/2004	6,500	550	<10	71	43	3,700	ND<10	ND<10	31	ND<100	ND<1,000	ND<100	ND<10	ND<10
	8/4/2004	8,200	990	19	300	120	3,300	ND<5	ND<5	23	ND<50	ND<500	ND<50	ND<5	ND<5
	11/4/2004	9,600	1,100	30	320	160	2,200	ND<4	ND<4	18	22 ^(f)	ND<400	ND<40	ND<4	ND<4
	1/12/2005	12,000	1,100	34	600	500	3,600	ND<4	ND<4	31	30 ^(f)	ND<400	ND<40	ND<4	ND<4
	5/2/2005	14,000	630	22	610	920	4,000	ND<10	ND<10	32	120 ^(f)	ND<3,000	ND<100	ND<10	ND<10
	7/20/2005	9,800	1,200	21	340	150	1,800	ND<2.5	ND<2.5	14	140	ND<500	ND<25	ND<2.5	ND<2.5
	11/21/2005	6,600	150	26	580	640	100	ND<1	ND<1	ND<1	13	ND<100	ND<10	ND<1	ND<1
	2/9/2006	7,100	340	11	370	360	910	ND<2	ND<2	9.3	120	ND<200	ND<20	ND<2	ND<2
	5/17/2006	7,100	270	5.1	320	290	930	ND<2	ND<2	8.4	260	ND<200	ND<20	ND<2	ND<2
	8/9/2006	5,800	440	7.5	120	45	670	ND<2	ND<2	7.3	380	ND<2,000	ND<50	ND<2	ND<2
11/8/2006	9,200	990	37	390	140	310	ND<2	ND<2	3.2	110	ND<200	ND<20	ND<2	ND<2	
2/14/2007	5,900	480	10	73	23	1,600	ND<2	ND<2	14.0	1,100	ND<500	ND<20	ND<2	ND<2	
5/17/2007	3,700	240	3	30	10	770	ND<0.5	ND<0.5	9.2	800	ND<2,000	ND<5	-	-	
MW-7	3/30/1994	43,000	7,200	2,400	1,600	11,000	-	-	-	-	-	-	-	-	-
	4/25/1994	30,000	3,900	1,000	940	6,900	-	-	-	-	-	-	-	-	-
	8/12/1994	30,000	3,800	1,400	1,300	7,500	-	-	-	-	-	-	-	-	-
	12/14/1994	31,000	3,600	1,200	900	6,400	-	-	-	-	-	-	-	-	-
	2/10/1995	27,000	4,000	900	890	5,100	-	-	-	-	-	-	-	-	-
	6/15/1995	17,000	920	680	740	4,100	-	-	-	-	-	-	-	-	-
	9/26/1995	7,000	200	150	170	810	-	-	-	-	-	-	-	-	-
	12/15/1995	11,000	350	170	540	1,900	-	-	-	-	-	-	-	-	-
	3/21/1996	12,000	320	100	730	2,500	-	-	-	-	-	-	-	-	-
	6/13/1996	5,900	98	19	370	620	ND<50	-	-	-	-	-	-	-	-
	9/16/1996	7,800	140	43	440	590	ND<25	-	-	-	-	-	-	-	-
	12/2/1996	6,300	87	29	290	430	ND<50	-	-	-	-	-	-	-	-

TABLE 2

**GROUNDWATER MONITORING ANALYTICAL RESULTS
TESORO - LIVERMORE, 67076**

Monitoring Well	Sample Date ^(a)	TPHg ^(b) (µg/l)	Benzene ^(b) (µg/l)	Toluene ^(b) (µg/l)	Ethylbenzene ^(b) (µg/l)	Xylenes ^(b) (µg/l)	MTBE ^(b) (µg/l)	DIPE ^(b) (µg/l)	ETBE ^(b) (µg/l)	TAME ^(b) (µg/l)	TBA ^(b) (µg/l)	Methanol ^(b) (µg/l)	Ethanol ^(b) (µg/l)	1,2-DCA ^(b) (µg/l)	EDB ^(b) (µg/l)
MW-7 (cont.)	3/7/1997	4,500	35	19	360	470	ND<25	-	-	-	-	-	-	-	-
	6/12/1997	3,900	29	5.2	170	48	ND<5	-	-	-	-	-	-	-	-
	9/29/1997	6,100	56	9	340	190	ND<25	-	-	-	-	-	-	-	-
	12/1/1997	6,500	24	ND<2.5	400	250	ND<25	-	-	-	-	-	-	-	-
	3/19/1998	2,000	20	ND<2.5	73	79	ND<25	-	-	-	-	-	-	-	-
	5/29/1998	5,700	22	7.3	290	350	ND<25	-	-	-	-	-	-	-	-
	9/15/1998	1,700	15	ND<2.5	44	5.1	ND<25	-	-	-	-	-	-	-	-
	11/30/1998	4,800	42	12	270	640	ND<25	-	-	-	-	-	-	-	-
	1/17/1999	3,400	33	ND<5	200	190	ND<50	-	-	-	-	-	-	-	-
	6/10/1999	1,700	7.8	1.5	23	4.1	ND<5	-	-	-	-	-	-	-	-
	9/7/1999	1,900	9.7	2.1	70	2.9	ND<5	-	-	-	-	-	-	-	-
	12/13/1999	1,900	8.0	1.1	10	1.1	ND<5	-	-	-	-	-	-	-	-
	3/13/2000	1,500	7.5	ND<0.5	6.7	2.9	ND<5	-	-	-	-	-	-	-	-
	6/12/2000	1,200	5.4	ND<0.5	5.2	1.0	ND<5	-	-	-	-	-	-	-	-
	11/10/2000	1,000	3.9	ND<0.5	ND<0.5	ND<0.5	ND<0.5	-	-	-	-	-	-	-	-
	12/31/2000	620	1.8	ND<0.5	ND<0.5	ND<0.5	ND<0.5	-	-	-	-	-	-	-	-
	3/27/2001	1,200	4.8	ND<0.5	6.7	0.94	ND<0.5	-	-	-	-	-	-	-	-
	6/30/2001	2,800	10	1.7	75	170	ND<0.5	-	-	-	-	-	-	-	-
	9/26/2001	1,900	16	0.89	2.3	25	ND<0.5	-	-	-	-	-	-	-	-
	12/18/2001	3,000	13	0.88	3.4	3.4	ND<0.5	-	-	-	-	-	-	-	-
	1/22/2002	-	-	-	-	-	-	-	-	-	-	-	-	-	-
	3/18/2002	3,100	7.3	1.5	38	110	ND<0.5	-	-	-	-	-	-	-	-
	6/5/2002	1,800	7.6	1.0	39	20	ND<0.5	-	-	-	-	-	-	-	-
	8/21/2002	3,300	7.6	0.7	85	36	ND<0.5	-	-	-	-	-	-	-	-
	12/3/2002	1,700	5.4	ND<0.5	15	5.5	ND<0.5	-	-	-	-	-	-	-	-
	3/4/2003	440	1.8	ND<0.5	0.54	2.9	ND<0.5	ND<0.5	ND<0.5	ND<0.5	ND<5	ND<5	ND<50	ND<5	ND<0.5
6/10/2003	550	0.8	ND<0.5	ND<0.5	ND<0.5	ND<0.5	ND<0.5	ND<0.5	ND<0.5	ND<5	ND<5	ND<50	ND<5	ND<0.5	ND<0.5
9/9/2003	120	ND<0.5	ND<0.5	ND<0.5	ND<0.5	ND<0.5	ND<0.5	ND<0.5	ND<0.5	ND<5	ND<5	ND<50	ND<5	ND<0.5	ND<0.5
12/23/2003	ND<50	ND<0.5	ND<0.5	ND<0.5	ND<0.5	ND<0.5	ND<0.5	ND<0.5	ND<0.5	ND<0.5	ND<5	ND<50	ND<5	ND<0.5	ND<0.5
3/23/2004	ND<50	ND<0.5	ND<0.5	ND<0.5	ND<0.5	ND<0.5	ND<0.5	ND<0.5	ND<0.5	ND<0.5	ND<5	ND<50	ND<5	ND<0.5	ND<0.5

TABLE 2

**GROUNDWATER MONITORING ANALYTICAL RESULTS
TESORO - LIVERMORE, 67076**

Monitoring Well	Sample Date ^(a)	TPHg ^(b) (µg/l)	Benzene ^(b) (µg/l)	Toluene ^(b) (µg/l)	Ethylbenzene ^(b) (µg/l)	Xylenes ^(b) (µg/l)	MTBE ^(b) (µg/l)	DIPE ^(b) (µg/l)	ETBE ^(b) (µg/l)	TAME ^(b) (µg/l)	TBA ^(b) (µg/l)	Methanol ^(b) (µg/l)	Ethanol ^(b) (µg/l)	1,2-DCA ^(b) (µg/l)	EDB ^(b) (µg/l)
MW-7 (cont.)	5/10/2004	67	ND<0.5	ND<0.5	ND<0.5	ND<0.5	ND<0.5	ND<0.5	ND<0.5	ND<0.5	ND<5	ND<50	ND<5	ND<0.5	ND<0.5
	8/4/2004	2,600	2.5	ND<0.5	36	31	ND<0.5	ND<0.5	ND<0.5	ND<0.5	ND<5	ND<50	ND<5	ND<0.5	ND<0.5
	11/4/2004	1,600	2.0	ND<0.5	16	16	ND<0.5	ND<0.5	ND<0.5	ND<0.5	ND<5	ND<50	ND<5	ND<0.5	ND<0.5
	1/12/2005	830	1.6	ND<0.5	15	12	ND<0.5	ND<0.5	ND<0.5	ND<0.5	ND<5	ND<50	ND<5	ND<0.5	ND<0.5
	5/2/2005	710	ND<0.5	ND<0.5	0.75	0.52	ND<0.5	ND<0.5	ND<0.5	ND<0.5	ND<5	ND<50	ND<5	ND<0.5	ND<0.5
	7/20/2005	1,400	1.1	ND<0.5	9.2	8.6	ND<0.5	ND<0.5	ND<0.5	ND<0.5	ND<5	ND<50	ND<5	ND<0.5	ND<0.5
	11/21/2005	1,100	0.6	ND<0.5	3.4	23	ND<0.5	ND<0.5	ND<0.5	ND<0.5	ND<5	ND<50	ND<5	ND<0.5	ND<0.5
	2/9/2006	270	ND<0.5	ND<0.5	1.2	0.98	ND<0.5	ND<0.5	ND<0.5	ND<0.5	ND<5	ND<50	ND<5	ND<0.5	ND<0.5
	5/16/2006	930	0.84	ND<0.5	10	7.9	ND<0.5	ND<0.5	ND<0.5	ND<0.5	ND<5	ND<50	ND<5	ND<0.5	ND<0.5
	8/9/2006	650	ND<0.5	ND<0.5	1.2	1.0	ND<0.5	ND<0.5	ND<0.5	ND<0.5	ND<5	ND<50	ND<5	ND<0.5	ND<0.5
	11/8/2006	800	ND<0.5	ND<0.5	1.0	0.62	ND<0.5	ND<0.5	ND<0.5	ND<0.5	ND<5	ND<50	ND<5	ND<0.5	ND<0.5
	2/14/2007	800	ND<0.5	ND<0.5	ND<0.5	ND<0.5	ND<0.5	ND<0.5	ND<0.5	ND<0.5	ND<5	ND<50	ND<5	ND<0.5	ND<0.5
5/17/2007	700	ND<0.5	ND<0.5	ND<0.5	ND<0.5	0.71	ND<0.5	ND<0.5	ND<0.5	ND<5	ND<50	ND<5	-	-	
MW-8	9/5/2003	ND<50	ND<0.5	ND<0.5	ND<0.5	ND<0.5	ND<0.5	ND<0.5	ND<0.5	ND<0.5	ND<5	-	-	-	-
	12/23/2003	ND<50	ND<0.5	ND<0.5	ND<0.5	ND<0.5	ND<0.5	ND<0.5	ND<0.5	ND<0.5	ND<5	ND<50	7.3	ND<0.5	ND<0.5
	3/23/2004	ND<50	ND<0.5	ND<0.5	ND<0.5	ND<0.5	ND<0.5	ND<0.5	ND<0.5	ND<0.5	ND<5	ND<50	ND<5	ND<0.5	ND<0.5
	5/10/2004	ND<50	ND<0.5	ND<0.5	ND<0.5	ND<0.5	ND<0.5	ND<0.5	ND<0.5	ND<0.5	ND<5	ND<50	ND<5	ND<0.5	ND<0.5
	8/4/2004	ND<50	ND<0.5	ND<0.5	ND<0.5	0.86	ND<0.5	ND<0.5	ND<0.5	ND<0.5	ND<5	ND<50	ND<5	ND<0.5	ND<0.5
	11/4/2004	ND<50	ND<0.5	ND<0.5	ND<0.5	ND<0.5	ND<0.5	ND<0.5	ND<0.5	ND<0.5	ND<5	ND<50	ND<5	ND<0.5	ND<0.5
	1/12/2005	ND<50	ND<0.5	ND<0.5	ND<0.5	ND<0.5	ND<0.5	ND<0.5	ND<0.5	ND<0.5	ND<5	ND<50	ND<5	ND<0.5	ND<0.5
	5/2/2005	ND<50	ND<0.5	ND<0.5	ND<0.5	ND<0.5	ND<0.5	ND<0.5	ND<0.5	ND<0.5	ND<5	ND<50	ND<5	ND<0.5	ND<0.5
	7/19/2005	ND<50	ND<0.5	ND<0.5	ND<0.5	ND<0.5	ND<0.5	ND<0.5	ND<0.5	ND<0.5	ND<5	ND<50	ND<5	ND<0.5	ND<0.5
	11/21/2005	ND<50	ND<0.5	ND<0.5	ND<0.5	ND<0.5	ND<0.5	ND<0.5	ND<0.5	ND<0.5	ND<5	ND<50	ND<5	ND<0.5	ND<0.5
	2/9/2006	ND<50	ND<0.5	ND<0.5	ND<0.5	ND<0.5	0.57	ND<0.5	ND<0.5	ND<0.5	ND<5	ND<50	ND<5	ND<0.5	ND<0.5
	5/16/2006	ND<50	ND<0.5	ND<0.5	ND<0.5	ND<0.5	ND<0.5	ND<0.5	ND<0.5	ND<0.5	ND<5	ND<50	ND<5	ND<0.5	ND<0.5
	8/9/2006	ND<50	ND<0.5	ND<0.5	ND<0.5	ND<0.5	ND<0.5	ND<0.5	ND<0.5	ND<0.5	ND<5	ND<50	ND<5	ND<0.5	ND<0.5
	11/8/2006	ND<50	1.2	1.9	ND<0.5	0.66	ND<0.5	ND<0.5	ND<0.5	ND<0.5	ND<5	ND<50	ND<5	ND<0.5	ND<0.5
2/14/2007	ND<50	ND<0.5	ND<0.5	ND<0.5	ND<0.5	ND<0.5	ND<0.5	ND<0.5	ND<0.5	ND<5	ND<50	ND<5	ND<0.5	ND<0.5	
5/17/2007	ND<50	ND<0.5	ND<0.5	ND<0.5	ND<0.5	ND<0.5	ND<0.5	ND<0.5	ND<0.5	ND<5	ND<50	ND<5	-	-	

TABLE 2

**GROUNDWATER MONITORING ANALYTICAL RESULTS
TESORO - LIVERMORE, 67076**

Monitoring Well	Sample Date ^(a)	TPHg ^(b) (µg/l)	Benzene ^(b) (µg/l)	Toluene ^(b) (µg/l)	Ethylbenzene ^(b) (µg/l)	Xylenes ^(b) (µg/l)	MTBE ^(b) (µg/l)	DIPE ^(b) (µg/l)	ETBE ^(b) (µg/l)	TAME ^(b) (µg/l)	TBA ^(b) (µg/l)	Methanol ^(b) (µg/l)	Ethanol ^(b) (µg/l)	1,2-DCA ^(b) (µg/l)	EDB ^(b) (µg/l)
MW-9	9/5/2003	3,400	23	1.5	110	10	10	ND<0.5	ND<0.5	ND<0.5	ND<5	-	-	-	-
	12/23/2003	1,100	2.4	ND<0.5	0.8	0.8	2.1	ND<0.5	ND<0.5	ND<0.5	5.9	ND<50	ND<5	ND<0.5	ND<0.5
	3/23/2004	760	8.5	ND<0.5	4.9	0.95	18	ND<0.5	ND<0.5	ND<0.5	ND<5	ND<50	ND<5	ND<0.5	ND<0.5
	5/10/2004	1,100	4.4	ND<0.5	1.3	0.67	11	ND<0.5	ND<0.5	ND<0.5	ND<5	ND<50	ND<5	ND<0.5	ND<0.5
	8/4/2004	1,200	3.4	0.59	16	7.6	6.1	ND<0.5	ND<0.5	ND<0.5	ND<5	ND<50	ND<5	ND<0.5	ND<0.5
	11/4/2004	610	0.52	ND<0.5	1.3	ND<0.5	2.0	ND<0.5	ND<0.5	ND<0.5	ND<5	ND<50	ND<5	ND<0.5	ND<0.5
	1/12/2005	1,400	1.6	0.55	5.5	1.1	2.4	ND<0.5	ND<0.5	ND<0.5	ND<5	ND<50	ND<5	ND<0.5	ND<0.5
	5/2/2005	1,500	10	0.55	6.7	1.1	27	ND<0.5	ND<0.5	ND<0.5	ND<5	ND<50	ND<5	ND<0.5	ND<0.5
	7/20/2005	1,800	5.5	0.69	12	1.6	10	ND<0.5	ND<0.5	ND<0.5	ND<5	ND<50	ND<5	ND<0.5	ND<0.5
	11/21/2005	1,200	0.94	ND<0.5	1.4	ND<0.5	3.3	ND<0.5	ND<0.5	ND<0.5	ND<5	ND<50	ND<5	ND<0.5	ND<0.5
	2/9/2006	1,200	2.8	0.51	6.4	0.84	4.4	ND<0.5	ND<0.5	ND<0.5	ND<5	ND<50	ND<5	ND<0.5	ND<0.5
	5/16/2006	1,600	3.8	0.57	12	1.8	4.9	ND<0.5	ND<0.5	ND<0.5	ND<5	ND<50	ND<5	ND<0.5	ND<0.5
	8/9/2006	760	ND<0.5	ND<0.5	1.0	ND<0.5	2.6	ND<0.5	ND<0.5	ND<0.5	ND<5	ND<50	ND<5	ND<0.5	ND<0.5
	11/8/2006	1,700	1.7	0.53	6.7	1.4	1.7	ND<0.5	ND<0.5	ND<0.5	ND<5	ND<50	ND<5	ND<0.5	ND<0.5
	2/14/2007	1,000	ND<0.5	ND<0.5	0.51	ND<0.5	0.51	ND<0.5	ND<0.5	ND<0.5	ND<5	ND<50	ND<5	ND<0.5	ND<0.5
5/17/2007	870	ND<0.5	ND<0.5	0.54	ND<0.5	0.93	ND<0.5	ND<0.5	ND<0.5	ND<5	ND<50	ND<5	-	-	
MW-10	9/5/2003	ND<50	ND<0.5	ND<0.5	ND<0.5	ND<0.5	ND<0.5	ND<0.5	ND<0.5	ND<0.5	ND<5	-	-	-	-
	12/23/2003	ND<50	ND<0.5	ND<0.5	ND<0.5	ND<0.5	ND<0.5	ND<0.5	ND<0.5	ND<0.5	ND<5	ND<50	ND<5	ND<0.5	ND<0.5
	3/23/2004	ND<50	ND<0.5	ND<0.5	ND<0.5	ND<0.5	ND<0.5	ND<0.5	ND<0.5	ND<0.5	ND<5	ND<50	ND<5	ND<0.5	ND<0.5
	5/10/2004	ND<50	ND<0.5	ND<0.5	ND<0.5	ND<0.5	ND<0.5	ND<0.5	ND<0.5	ND<0.5	ND<5	ND<50	ND<5	ND<0.5	ND<0.5
	8/4/2004	ND<50	ND<0.5	ND<0.5	ND<0.5	0.61	ND<0.5	ND<0.5	ND<0.5	ND<0.5	ND<5	ND<50	ND<5	ND<0.5	ND<0.5
	11/4/2004	ND<50	ND<0.5	ND<0.5	ND<0.5	ND<0.5	ND<0.5	ND<0.5	ND<0.5	ND<0.5	ND<5	ND<50	ND<5	ND<0.5	ND<0.5
	1/12/2005	ND<50	ND<0.5	ND<0.5	ND<0.5	ND<0.5	ND<0.5	ND<0.5	ND<0.5	ND<0.5	ND<5	ND<50	ND<5	ND<0.5	ND<0.5
	5/2/2005	ND<50	ND<0.5	ND<0.5	ND<0.5	ND<0.5	ND<0.5	ND<0.5	ND<0.5	ND<0.5	ND<5	ND<50	ND<5	ND<0.5	ND<0.5
	7/19/2005	ND<50	ND<0.5	ND<0.5	ND<0.5	ND<0.5	ND<0.5	ND<0.5	ND<0.5	ND<0.5	ND<5	ND<50	ND<5	ND<0.5	ND<0.5
	11/21/2005	ND<50	ND<0.5	ND<0.5	ND<0.5	ND<0.5	ND<0.5	ND<0.5	ND<0.5	ND<0.5	ND<5	ND<50	ND<5	ND<0.5	ND<0.5
	2/9/2006	ND<50	ND<0.5	ND<0.5	ND<0.5	ND<0.5	ND<0.5	ND<0.5	ND<0.5	ND<0.5	ND<5	ND<50	ND<5	ND<0.5	ND<0.5
	5/16/2006	ND<50	ND<0.5	ND<0.5	ND<0.5	ND<0.5	ND<0.5	ND<0.5	ND<0.5	ND<0.5	ND<5	ND<50	ND<5	ND<0.5	ND<0.5
	8/9/2006	ND<50	ND<0.5	ND<0.5	ND<0.5	ND<0.5	ND<0.5	ND<0.5	ND<0.5	ND<0.5	ND<5	ND<50	ND<5	ND<0.5	ND<0.5
11/8/2006	ND<50	ND<0.5	ND<0.5	ND<0.5	ND<0.5	ND<0.5	ND<0.5	ND<0.5	ND<0.5	ND<5	ND<50	ND<5	ND<0.5	ND<0.5	

TABLE 2

**GROUNDWATER MONITORING ANALYTICAL RESULTS
TESORO - LIVERMORE, 67076**

Monitoring Well	Sample Date ^(a)	TPHg ^(b) (µg/l)	Benzene ^(b) (µg/l)	Toluene ^(b) (µg/l)	Ethylbenzene ^(b) (µg/l)	Xylenes ^(b) (µg/l)	MTBE ^(b) (µg/l)	DIPE ^(b) (µg/l)	ETBE ^(b) (µg/l)	TAME ^(b) (µg/l)	TBA ^(b) (µg/l)	Methanol ^(b) (µg/l)	Ethanol ^(b) (µg/l)	1,2-DCA ^(b) (µg/l)	EDB ^(b) (µg/l)
MW-10 (cont.)	2/14/2007	ND<50	ND<0.5	ND<0.5	ND<0.5	ND<0.5	ND<0.5	ND<0.5	ND<0.5	ND<0.5	ND<5	ND<50	ND<5	ND<0.5	ND<0.5
	5/17/2007	ND<50	ND<0.5	ND<0.5	ND<0.5	ND<0.5	ND<0.5	ND<0.5	ND<0.5	ND<0.5	ND<5	ND<50	ND<5	-	-
VW-2	8/4/2004	5,700	480	ND<20	600	ND<20	12,000	ND<20	ND<20	110	ND<90	ND<2,000	ND<200	ND<20	ND<20
	11/4/2004	5,800	340	ND<20	38	ND<20	10,000	ND<20	ND<20	120	ND<90	ND<2,000	ND<200	ND<20	ND<20
	1/12/2005	3,800	210	ND<5	90	54	2,900	ND<5	ND<5	33	26 ^(f)	ND<500	ND<50	ND<5	ND<5
	5/2/2005	2,600	84	ND<2	13	7.0	960	ND<2	ND<2	12	57	ND<500	ND<20	ND<2	ND<2
	7/20/2005	6,200	240	13	290	480	6,600	ND<2	ND<2	56	59 ^(f)	ND<2,000	ND<20	ND<2	ND<2
	11/21/2005	3,100	100	ND<9	22	10	5,300	ND<9	ND<9	54	76 ^(f)	ND<900	ND<90	ND<9	ND<9
	2/9/2006	3,500	140	ND<25	130	36	12,000	ND<25	ND<25	65	2800	ND<2,500	ND<250	ND<25	ND<25
	5/17/2006	1,800	90	2.6	39	11	1,200	ND<2.5	ND<2.5	12	700	ND<250	ND<25	ND<2.5	ND<2.5
	8/9/2006	4,300	86	3.5	200	16	2,500	ND<2.5	ND<2.5	28	2800	ND<5,000	ND<25	ND<2.5	ND<2.5
	11/8/2006	3,200	46	3.1	10	4.8	1,500	ND<3	ND<3	11	7,100	ND<800	ND<30	ND<3	ND<3
	2/14/2007	3,300	75	4.6	50	82	580	ND<2	ND<2	7.0	4,100	ND<500	ND<20	ND<2	ND<2
5/17/2007	3,500	51	7.3	17	24	100	ND<2.5	ND<2.5	ND<2.5	7,100	ND<250	ND<25	-	-	
VW-3	8/4/2004	ND<50	ND<0.5	ND<0.5	ND<0.5	ND<0.5	ND<0.5	ND<0.5	ND<0.5	ND<0.5	ND<5	ND<50	ND<5	ND<0.5	ND<0.5
	11/4/2004	ND<50	ND<0.5	ND<0.5	ND<0.5	ND<0.5	ND<0.5	ND<0.5	ND<0.5	ND<0.5	ND<5	ND<50	ND<5	ND<0.5	ND<0.5
	1/12/2005	ND<50	ND<0.5	ND<0.5	ND<0.5	ND<0.5	ND<0.5	ND<0.5	ND<0.5	ND<0.5	ND<5	ND<50	ND<5	ND<0.5	ND<0.5
	5/2/2005	ND<50	ND<0.5	ND<0.5	ND<0.5	ND<0.5	ND<0.5	ND<0.5	ND<0.5	ND<0.5	ND<5	ND<50	ND<5	ND<0.5	ND<0.5
	7/20/2005	ND<50	ND<0.5	ND<0.5	ND<0.5	ND<0.5	ND<0.5	ND<0.5	ND<0.5	ND<0.5	ND<5	ND<50	ND<5	ND<0.5	ND<0.5
	11/21/2005	ND<50	ND<0.5	ND<0.5	ND<0.5	ND<0.5	ND<0.5	ND<0.5	ND<0.5	ND<0.5	ND<5	ND<50	ND<5	ND<0.5	ND<0.5
	2/9/2006	ND<50	ND<0.5	ND<0.5	ND<0.5	ND<0.5	ND<0.5	ND<0.5	ND<0.5	ND<0.5	ND<5	ND<50	ND<5	ND<0.5	ND<0.5
	5/16/2006	ND<50	ND<0.5	ND<0.5	ND<0.5	ND<0.5	ND<0.5	ND<0.5	ND<0.5	ND<0.5	ND<5	ND<50	ND<5	ND<0.5	ND<0.5
	8/9/2006	ND<50	ND<0.5	ND<0.5	ND<0.5	ND<0.5	ND<0.5	ND<0.5	ND<0.5	ND<0.5	ND<5	ND<50	ND<5	ND<0.5	ND<0.5
	11/8/2006	ND<50	ND<0.5	ND<0.5	ND<0.5	ND<0.5	ND<0.5	ND<0.5	ND<0.5	ND<0.5	ND<5	ND<50	ND<5	ND<0.5	ND<0.5
	2/14/2007	ND<50	ND<0.5	ND<0.5	ND<0.5	ND<0.5	ND<0.5	ND<0.5	ND<0.5	ND<0.5	ND<5	ND<50	ND<5	ND<0.5	ND<0.5
5/17/2007	ND<50	ND<0.5	ND<0.5	ND<0.5	ND<0.5	ND<0.5	ND<0.5	ND<0.5	ND<0.5	ND<5	ND<50	ND<5	-	-	
TP-1	7/20/2005	42,000	2,800	1,100	1,700	4,800	12,000	ND<20	ND<20	92	130 ^(f)	ND<2,000	ND<200	ND<20	ND<20
	11/22/2005	36,000	2,100	290	1,400	2,600	11,000	ND<20	ND<20	70	810	ND<2,000	ND<200	ND<20	ND<20
	2/9/2006	19,000	1,400	230	990	1,700	8,900	ND<15	ND<15	72	2,200	ND<1,500	ND<150	ND<15	ND<15
	5/17/2006	20,000	1,400	200	920	1,800	9,200	ND<20	ND<20	37	2,500	ND<10,000	ND<200	ND<20	ND<20

TABLE 2

**GROUNDWATER MONITORING ANALYTICAL RESULTS
TESORO - LIVERMORE, 67076**

Monitoring Well	Sample Date ^(a)	TPHg ^(b) (µg/l)	Benzene ^(b) (µg/l)	Toluene ^(b) (µg/l)	Ethylbenzene ^(b) (µg/l)	Xylenes ^(b) (µg/l)	MTBE ^(b) (µg/l)	DIPE ^(b) (µg/l)	ETBE ^(b) (µg/l)	TAME ^(b) (µg/l)	TBA ^(b) (µg/l)	Methanol ^(b) (µg/l)	Ethanol ^(b) (µg/l)	1,2-DCA ^(b) (µg/l)	EDB ^(b) (µg/l)
TP-1 (cont.)	8/9/2006	28,000	1,600	150	1,200	2,200	13,000	ND<15	ND<15	84	4,900	ND<2,500	ND<150	ND<15	ND<15
	11/8/2006	20,000	1,100	78	990	1,600	6,800	ND<15	ND<15	47	4,400	ND<8,000	ND<150	ND<15	ND<15
	2/14/2007	15,000	820	37	810	1,000	8,300	ND<15	ND<15	58	8,500	ND<4,000	ND<150	ND<15	ND<15
	5/17/2007	16,000	850	35	810	1,200	6,700	ND<10	ND<10	42	12,000	ND<2,000	ND<100	-	-
TP-2	7/20/2005	26,000	1,800	1,100	1,100	2,500	63,000	ND<150	ND<150	400	ND<700	ND<15,000	ND<1,500	ND<150	ND<150
	11/22/2005	16,000	1,200	140	840	820	52,000	ND<90	ND<90	340	1,200 ^(f)	ND<9,000	ND<900	ND<90	ND<90
	2/9/2006	2,700	94	2.9	28	14	1,200	ND<2.5	ND<2.5	13	1,600	ND<250	ND<25	ND<2.5	ND<2.5
	5/17/2006	31,000	2,200	1,100	1,500	3,300	87,000	ND<90	ND<90	680	4,800	ND<15,000	ND<1,500	ND<90	ND<90
	8/9/2006	14,000	1,400	86	1,200	830	56,000	ND<2.5	ND<2.5	350	2,800	ND<4,000	ND<25	ND<2.5	ND<2.5
	11/8/2006	16,000	1,300	ND<90	930	370	38,000	ND<90	ND<90	280	3,600	ND<40,000	ND<900	ND<90	ND<90
	2/14/2007	22,000	1,900	230	1,700	1,600	53,000	ND<90	ND<90	400	2,800	ND<20,000	ND<900	ND<90	ND<90
	5/17/2007	ND<25,000	2,400	51	1,500	510	69,000	ND<2	ND<0.5	550	4,300	ND<25,000	ND<5	-	-
MW-A	1/17/1999	5,800	1,700	85	65	320	ND<5	-	-	-	-	-	-	-	-
MW-B	1/17/1999	4,400	240	30	21	39	ND<5	-	-	-	-	-	-	-	-
MW-C	1/17/1999	1800	0.8	ND<0.5	ND<0.5	0.55	ND<5	-	-	-	-	-	-	-	-
MW-D	1/17/1999	5,600	1,600	130	66	220	ND<5	-	-	-	-	-	-	-	-
MW-E	1/17/1999	5,700	1,600	180	180	310	ND<50	-	-	-	-	-	-	-	-
	6/10/1999	5,000	1,300	130	320	450	ND<25	-	-	-	-	-	-	-	-
MW-W	1/17/1999	23,000	7,600	760	1,400	5,000	ND<50	-	-	-	-	-	-	-	-
	6/10/1999	16,000	4,100	420	1,300	4,000	ND<50	-	-	-	-	-	-	-	-

(a) Samples collected before July 2005 collected by others; data provided by Delta Environmental Consultants, Inc., Second Quarter 2005 Groundwater Monitoring Report dated 31 July 2005.

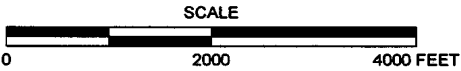
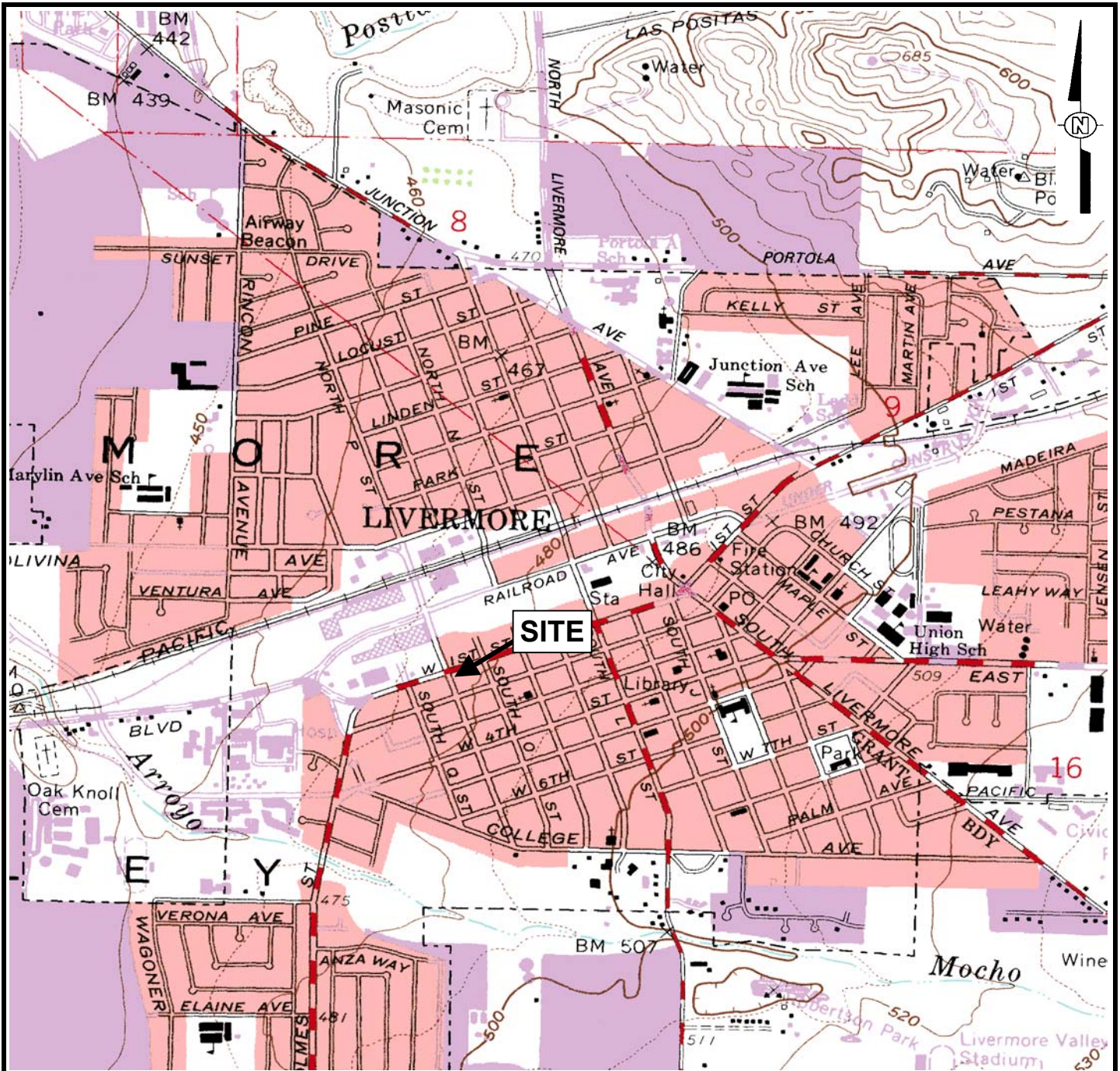
(b) Total petroleum hydrocarbons as gasoline (TPHg), benzene, toluene, ethylbenzene, xylenes, methyl tert-butyl ether (MTBE), di-isopropyl ether (DIPE), ethyl tert-butyl ether (ETBE), tert-amyl methyl ether (TAME), tert-butyl alcohol (TBA), 1,2-dichloroethane (1,2-DCA), and 1,2-dibromoethane (EDB) analyzed by EPA Method 8260; reported in micrograms per liter (µg/l).

(c) Field measurement, reported in milligrams per liter (mg/l).

(d) ND - Not detected at the reporting limit listed.

(e) "-" Not analyzed.

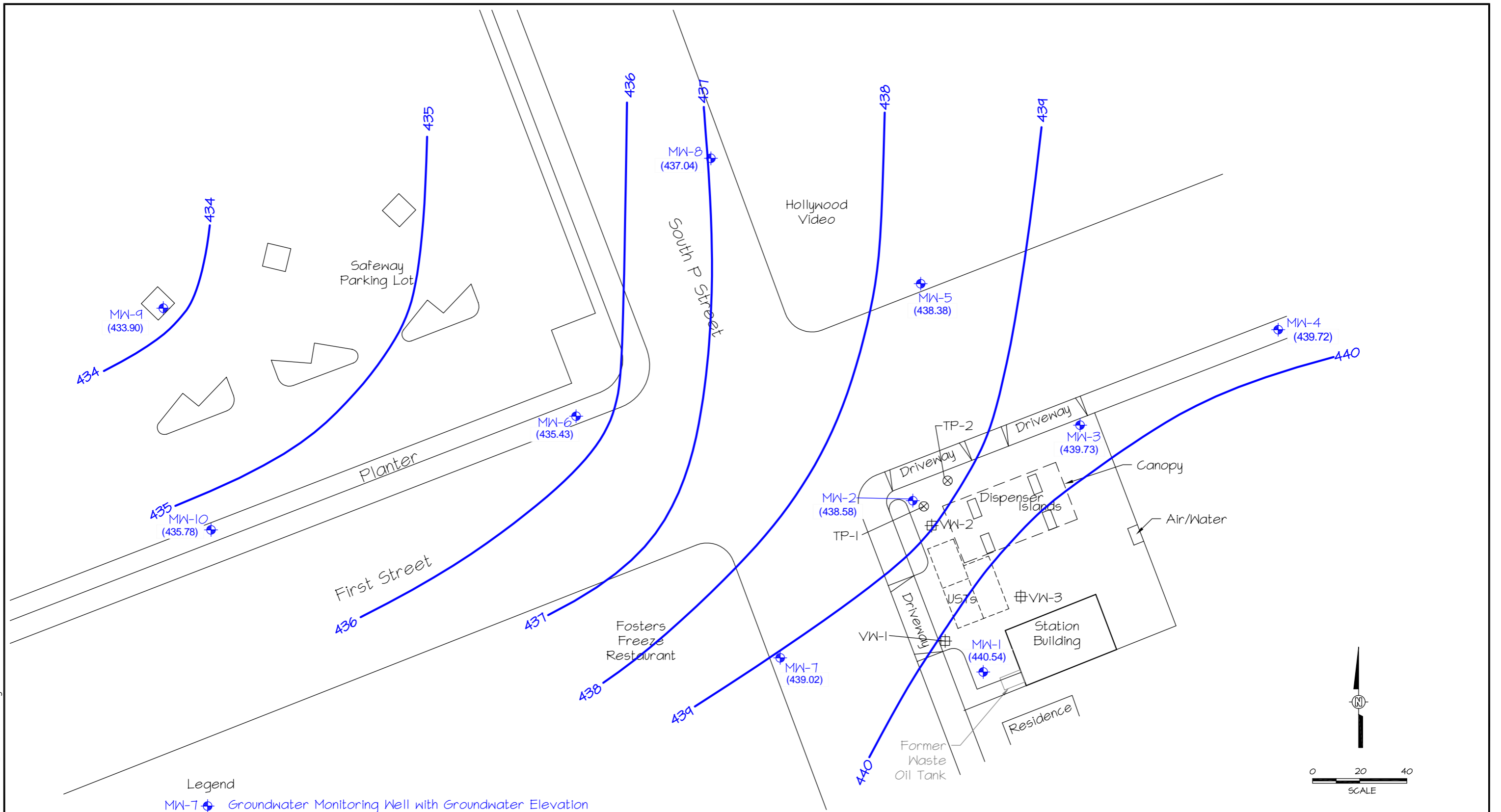
(f) TBA results may be biased slightly high. A fraction of MTBE (typically less than 10 percent) converts to TBA during the analysis of water samples. This conversion effect is considered to be mathematically significant in samples that contain MTBE/TBA ratios of over 20:1.



REFERENCE
 7.5 MINUTE USGS TOPOGRAPHIC MAP OF
 LIVERMORE, CALIFORNIA QUADRANGLE
 DATE: 1961, PHOTOREVISED 1980
 SCALE = 1:24,000

ARCTOS ENVIRONMENTAL			
TESORO - LIVERMORE			
SITE LOCATION MAP			
PROJECT NO. 01LV	DRAWN BY MP	CHECKED BY MP	APPROVED BY JG
FILE NO. Site Map.xls		FIGURE 1	

01LVI40607.dwg
8/18/2007 5:41PM

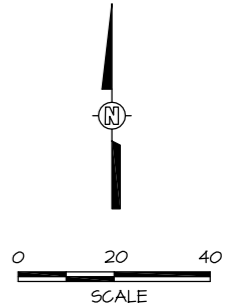
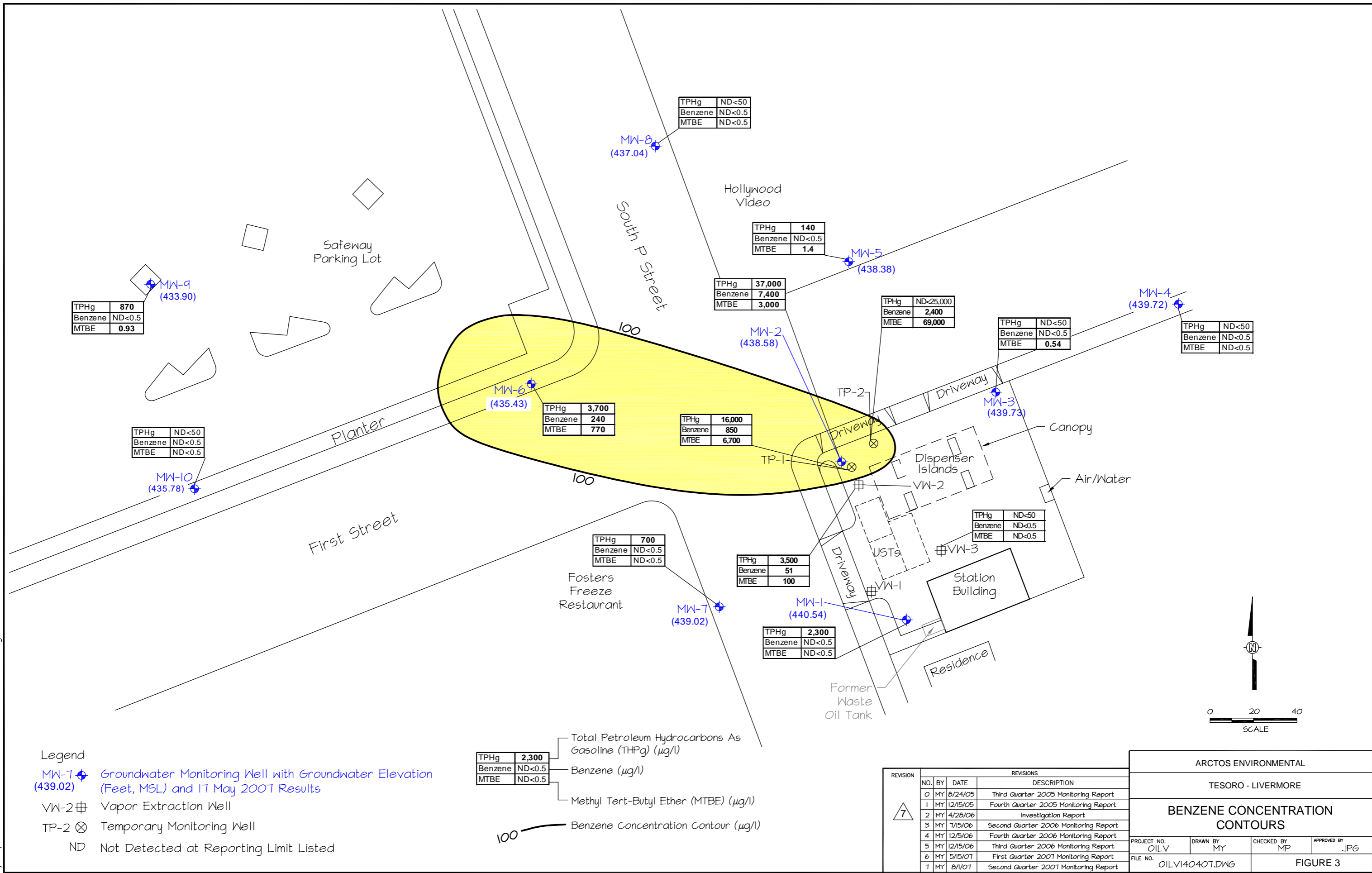


- Legend
- MW-7 ⊕ Groundwater Monitoring Well with Groundwater Elevation (439.02) (Feet, MSL) Measured on 17 May 2007
 - VW-2 ⊞ Vapor Extraction Well
 - TP-2 ⊗ Temporary Monitoring Well
 - 440 — Groundwater Elevation Contour (Dashed Where Inferred)

REVISION	REVISIONS		
	NO.	BY	DATE
7	0	MY	8/24/05
	1	MY	12/15/05
	2	MY	4/28/06
	3	MY	7/15/06
	4	MY	12/15/06
	5	MY	3/13/07
	6	MY	5/15/07

ARCTOS ENVIRONMENTAL			
TESORO - LIVERMORE			
GROUNDWATER ELEVATION CONTOURS			
PROJECT NO. OILV	DRAWN BY MY	CHECKED BY MP	APPROVED BY JPG
FILE NO. OILV140607.DWG		FIGURE 2	

01LV140407.dwg
7/30/2007 4:44PM



Legend

- MW-7 (439.02) Groundwater Monitoring Well with Groundwater Elevation (Feet, MSL) and 17 May 2007 Results
- VW-2 Vapor Extraction Well
- TP-2 Temporary Monitoring Well
- ND Not Detected at Reporting Limit Listed

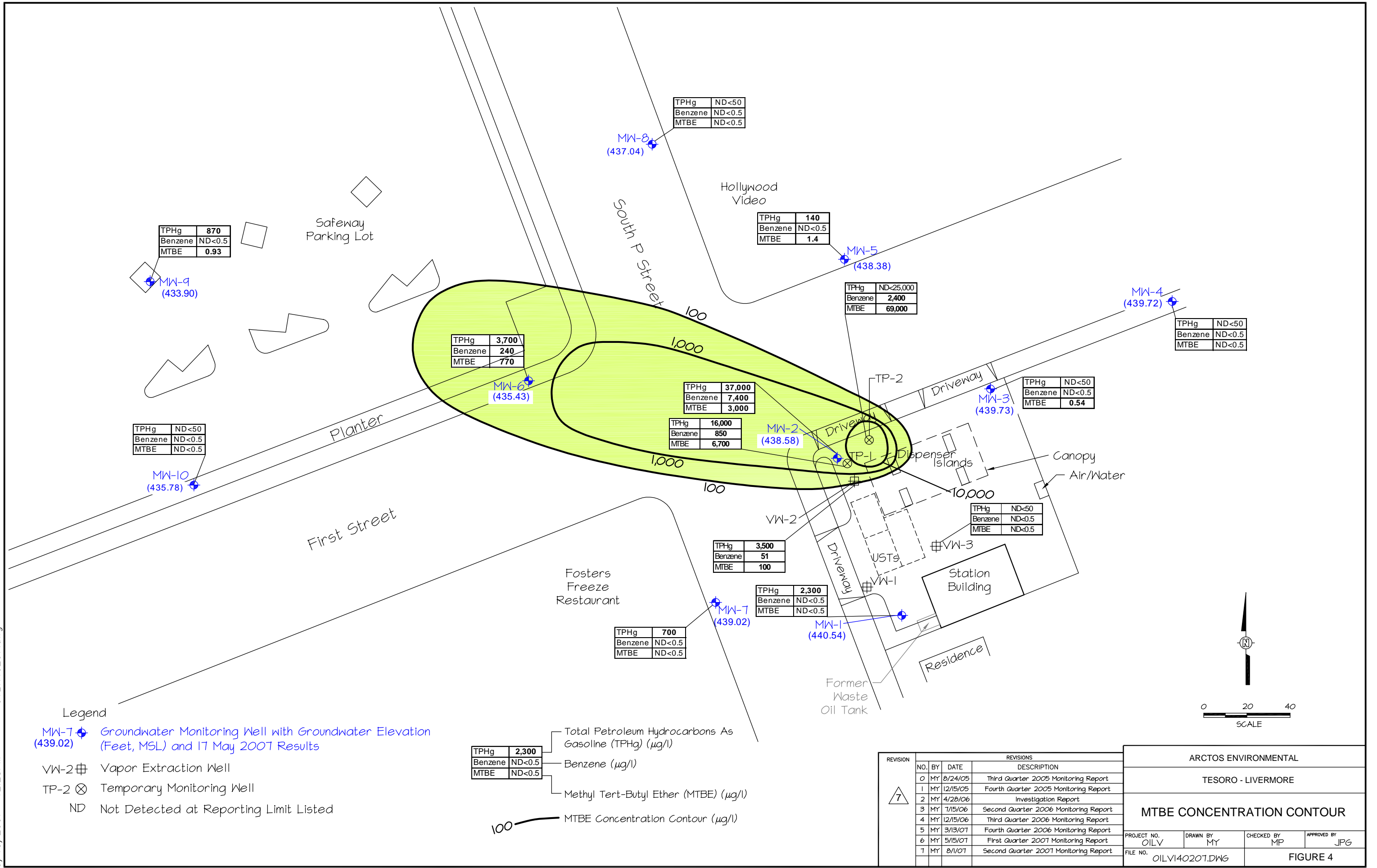
TPHg	2,300
Benzene	ND<0.5
MTBE	ND<0.5

 Total Petroleum Hydrocarbons As Gasoline (TPHg) ($\mu\text{g/l}$)
 Benzene ($\mu\text{g/l}$)
 Methyl Tert-Butyl Ether (MTBE) ($\mu\text{g/l}$)
 100 — Benzene Concentration Contour ($\mu\text{g/l}$)

REVISION	REVISIONS			
	NO.	BY	DATE	DESCRIPTION
7	0	MY	8/24/05	Third Quarter 2005 Monitoring Report
	1	MY	12/15/05	Fourth Quarter 2005 Monitoring Report
	2	MY	4/28/06	Investigation Report
	3	MY	7/15/06	Second Quarter 2006 Monitoring Report
	4	MY	12/5/06	Fourth Quarter 2006 Monitoring Report
	5	MY	12/15/06	Third Quarter 2006 Monitoring Report
	6	MY	5/15/07	First Quarter 2007 Monitoring Report
7	MY	8/1/07	Second Quarter 2007 Monitoring Report	

ARCTOS ENVIRONMENTAL			
TESORO - LIVERMORE			
BENZENE CONCENTRATION CONTOURS			
PROJECT NO. OILV	DRAWN BY MY	CHECKED BY MP	APPROVED BY JPG
FILE NO. OILV140407.DWG		FIGURE 3	

01LV140207.dwg
9/13/2007 12:28PM



- Legend**
- MW-7 (439.02) Groundwater Monitoring Well with Groundwater Elevation (Feet, MSL) and 17 May 2007 Results
 - VW-2 Vapor Extraction Well
 - TP-2 Temporary Monitoring Well
 - ND Not Detected at Reporting Limit Listed

- TPHg 2,300 Total Petroleum Hydrocarbons As Gasoline (TPHg) ($\mu\text{g/l}$)
- Benzene ND<0.5 Benzene ($\mu\text{g/l}$)
- MTBE ND<0.5 Methyl Tert-Butyl Ether (MTBE) ($\mu\text{g/l}$)
- 100 MTBE Concentration Contour ($\mu\text{g/l}$)

REVISION	REVISIONS			
	NO.	BY	DATE	DESCRIPTION
7	0	MY	8/24/05	Third Quarter 2005 Monitoring Report
	1	MY	12/15/05	Fourth Quarter 2005 Monitoring Report
	2	MY	4/28/06	Investigation Report
	3	MY	7/15/06	Second Quarter 2006 Monitoring Report
	4	MY	12/15/06	Third Quarter 2006 Monitoring Report
	5	MY	3/13/07	Fourth Quarter 2006 Monitoring Report
	6	MY	5/15/07	First Quarter 2007 Monitoring Report
7	MY	8/11/07	Second Quarter 2007 Monitoring Report	

ARCTOS ENVIRONMENTAL			
TESORO - LIVERMORE			
MTBE CONCENTRATION CONTOUR			
PROJECT NO. OILV	DRAWN BY MY	CHECKED BY MP	APPROVED BY JPG
FILE NO. OILV140207.DWG		FIGURE 4	

APPENDIX A
FIELD DATA SHEETS

WELL GAUGING DATA

Project # 070517-0W-1 Date 5-17-07 Client Arctos Environ

Site 1619 1st St Livermore

Well ID	Time	Well Size (in.)	Sheen / Odor	Depth to Immiscible Liquid (ft.)	Thickness of Immiscible Liquid (ft.)	Volume of Immiscibles Removed (ml)	Depth to water (ft.)	Depth to well bottom (ft.)	Survey Point: TOB or <u>TOC</u>	Notes
VW-3	0902	2					31.70	36.30	↓	
MW-1	0914	4					33.75	54.05		
MW-4	0918	2					33.92	46.90		
MW-8	1005	2					34.14	44.45		
MW-10	0840	2					35.85	45.15		
MW-3	0921	4					33.64	52.90		
MW-5	0928	2					34.29	46.30		
MW-7	0933	2					33.31	46.10		
MW-9	0846	2					36.88	44.74		
MW-6	0950	2					36.50	46.80		
MW-2	0936	4					34.40	53.98		
VW-2	0939	2					33.17	36.70		
TP-1	0949	2					33.52	43.30		
TP-2	0952	2					33.28	42.01		

WELL MONITORING DATA SHEET

Project #: 0705/7-DW-1	Client: Arctos Environ.
Sampler: DW	Date: 5-17-07
Well I.D.: MW-1	Well Diameter: 3 4 6 8
Total Well Depth (TD): 54.05	Depth to Water (DTW): 33.75
Depth to Free Product:	Thickness of Free Product (feet):
Referenced to: PVC Grade	D.O. Meter (if req'd): YSI HACH
DTW with 80% Recharge [(Height of Water Column x 0.20) + DTW]: 37.81	

Purge Method: Bailer <input checked="" type="checkbox"/> Disposable Bailer <input type="checkbox"/> Positive Air Displacement <input checked="" type="checkbox"/> Electric Submersible	Waterra Peristaltic Extraction Pump Other _____	Sampling Method: Bailer <input checked="" type="checkbox"/> Disposable Bailer <input type="checkbox"/> Extraction Port <input type="checkbox"/> Dedicated Tubing Other: _____
---	--	---

13.2 (Gals.) X	3	= 39.6 Gals.
Case Volume	Specified Volumes	Calculated Volume

Well Diameter	Multiplier	Well Diameter	Multiplier
1"	0.04	4"	0.65
2"	0.16	6"	1.47
3"	0.37	Other	radius ² * 0.163

Time	Temp (°F or °C)	pH	Cond. (mS or μ S)	Turbidity (NTUs)	Gals. Removed	Observations
1124	69.8	7.1	1197	>1000	13.2	Brown
1127	69.6	7.0	1198	>1000	26.4	"
1130	69.5	7.0	1216	>1000	39.6	"

Did well dewater? Yes No Gallons actually evacuated: **39.6**

Sampling Date: **5-17-07** Sampling Time: **1135** Depth to Water: **37.80**

Sample I.D.: **MW-1** Laboratory: Kiff CalScience Other _____

Analyzed for: TPH-G BTEX MTBE TPH-D Oxygenates (7) Other: **Lead Scavengers**

EB I.D. (if applicable): _____ @ _____ Time Duplicate I.D. (if applicable): _____

Analyzed for: TPH-G BTEX MTBE TPH-D Oxygenates (5) Other: _____

D.O. (if req'd):	Pre-purge:	mg/L	Post-purge:	mg/L
O.R.P. (if req'd):	Pre-purge:	mV	Post-purge:	mV

WELL MONITORING DATA SHEET

Project #: <u>0705/7-DW-1</u>	Client: <u>Arctos Environ.</u>
Sampler: <u>DW</u>	Date: <u>5-17-07</u>
Well I.D.: <u>MW-2</u>	Well Diameter: 2 3 <u>(4)</u> 6 8
Total Well Depth (TD): <u>53.98</u>	Depth to Water (DTW): <u>34.40</u>
Depth to Free Product:	Thickness of Free Product (feet):
Referenced to: <u>(PVC)</u> Grade	D.O. Meter (if req'd): <u>(YS)</u> HACH
DTW with 80% Recharge [(Height of Water Column x 0.20) + DTW]: <u>38.31</u>	

Purge Method: Bailer Disposable Bailer Positive Air Displacement <input checked="" type="checkbox"/> Electric Submersible	Waterra Peristaltic Extraction Pump Other _____	Sampling Method: Bailer <input checked="" type="checkbox"/> Disposable Bailer Extraction Port Dedicated Tubing Other: _____
--	--	---

<u>12.7</u> (Gals.) X	<u>3</u> Specified Volumes	= <u>38.1</u> Gals. Calculated Volume
-----------------------	----------------------------	---------------------------------------

Well Diameter	Multiplier	Well Diameter	Multiplier
1"	0.04	4"	0.65
2"	0.16	6"	1.47
3"	0.37	Other	radius ² * 0.163

Time	Temp (°F or °C)	pH	Cond. (mS or <u>µS</u>)	Turbidity (NTUs)	Gals. Removed	Observations
<u>1433</u>	<u>70.7</u>	<u>7.0</u>	<u>1176</u>	<u>982</u>	<u>12.7</u>	<u>gray/odor</u>
<u>1435</u>	<u>70.5</u>	<u>6.9</u>	<u>1173</u>	<u>863</u>	<u>25.4</u>	<u>" "</u>
<u>1438</u>	<u>70.6</u>	<u>6.9</u>	<u>1177</u>	<u>861</u>	<u>38.1</u>	<u>" "</u>

Did well dewater? Yes No Gallons actually evacuated: 38.1

Sampling Date: 5-17-07 Sampling Time: 1443 Depth to Water: 37.20

Sample I.D.: MW-2 Laboratory: Kiff CalScience Other _____

Analyzed for: TPH-D BTEX MTBE TPH-D Oxygenates (7) Other: Lead Scavengers

EB I.D. (if applicable): _____ @ _____ Time Duplicate I.D. (if applicable): _____

Analyzed for: TPH-G BTEX MTBE TPH-D Oxygenates (5) Other: _____

D.O. (if req'd):	Pre-purge:	mg/L	Post-purge:	mg/L
O.R.P. (if req'd):	Pre-purge:	mV	Post-purge:	mV
				<u>0.3</u>
				<u>-97</u>

WELL MONITORING DATA SHEET

Project #: <u>0705/7-DW-1</u>	Client: <u>Arctos Environ.</u>
Sampler: <u>DW</u>	Date: <u>5-17-07</u>
Well I.D.: <u>MW-4</u>	Well Diameter: <u>(2)</u> 3 4 6 8 _____
Total Well Depth (TD): <u>46.80</u>	Depth to Water (DTW): <u>33.92</u>
Depth to Free Product:	Thickness of Free Product (feet): <u>2</u>
Referenced to: <u>(PVC)</u> Grade	D.O. Meter (if req'd): <u>YSI</u> <u>36</u> HACH
DTW with 80% Recharge [(Height of Water Column x 0.20) + DTW]: <u>36.49</u>	

Purge Method: Bailer <input checked="" type="checkbox"/> Disposable Bailer Positive Air Displacement Electric Submersible	Waterra Peristaltic Extraction Pump Other _____	Sampling Method: Bailer <input checked="" type="checkbox"/> Disposable Bailer Extraction Port Dedicated Tubing Other: _____
--	--	---

<u>2.1</u> (Gals.) X	<u>3</u> Specified Volumes =	<u>6.3</u> Gals. Calculated Volume
1 Case Volume		

Well Diameter	Multiplier	Well Diameter	Multiplier
1"	0.04	4"	0.65
2"	0.16	6"	1.47
3"	0.37	Other	radius ² * 0.163

Time	Temp (°F or °C)	pH	Cond (mS or μS)	Turbidity (NTUs)	Gals. Removed	Observations
<u>1233</u>	<u>76.0</u>	<u>7.0</u>	<u>1006</u>	<u>>1000</u>	<u>2.1</u>	<u>Brown</u>
<u>1237</u>	<u>70.4</u>	<u>7.0</u>	<u>1040</u>	<u>>1000</u>	<u>4.2</u>	<u>"</u>
<u>1241</u>	<u>70.0</u>	<u>7.0</u>	<u>1048</u>	<u>>1000</u>	<u>6.3</u>	<u>"</u>

Did well dewater? Yes No Gallons actually evacuated: 6.3

Sampling Date: 5-17-07 Sampling Time: 1245 Depth to Water: 36.01

Sample I.D.: MW-4 Laboratory: (Kiff) CalScience Other _____

Analyzed for: (TPH-G) (BTEX) (MTBE) TPH-D (Oxygenates (1)) Other: Lead Scavengers

EB I.D. (if applicable): _____ @ _____ Time Duplicate I.D. (if applicable): _____

Analyzed for: TPH-G BTEX MTBE TPH-D Oxygenates (5) Other: _____

D.O. (if req'd):	Pre-purge:	mg/L	Post-purge:	mg/L
O.R.P. (if req'd):	Pre-purge:	mV	Post-purge:	mV
			<u>0.2</u>	
			<u>63</u>	

WELL MONITORING DATA SHEET

Project #: <u>0705/7-DW-1</u>	Client: <u>Arctos Environ.</u>
Sampler: <u>DW</u>	Date: <u>5-17-07</u>
Well I.D.: <u>MW-6</u>	Well Diameter: <u>2</u> 3 4 6 8 _____
Total Well Depth (TD): <u>46.80</u>	Depth to Water (DTW): <u>36.50</u>
Depth to Free Product:	Thickness of Free Product (feet):
Referenced to: <u>PVC</u> Grade	D.O. Meter (if req'd): <u>YS</u> HACH
DTW with 80% Recharge [(Height of Water Column x 0.20) + DTW]: <u>38.56</u>	

Purge Method: Bailer <input checked="" type="checkbox"/> Disposable Bailer Positive Air Displacement Electric Submersible	Waterra Peristaltic Extraction Pump Other _____	Sampling Method: Bailer <input checked="" type="checkbox"/> Disposable Bailer Extraction Port Dedicated Tubing Other: _____
--	--	---

$\underline{1.6} \text{ (Gals.)} \times \underline{3} = \underline{4.8} \text{ Gals.}$ 1 Case Volume Specified Volumes Calculated Volume	<table border="1" style="width:100%; border-collapse: collapse; font-size: small;"> <thead> <tr> <th>Well Diameter</th> <th>Multiplier</th> <th>Well Diameter</th> <th>Multiplier</th> </tr> </thead> <tbody> <tr> <td>1"</td> <td>0.04</td> <td>4"</td> <td>0.65</td> </tr> <tr> <td>2"</td> <td>0.16</td> <td>6"</td> <td>1.47</td> </tr> <tr> <td>3"</td> <td>0.37</td> <td>Other</td> <td>radius² * 0.163</td> </tr> </tbody> </table>	Well Diameter	Multiplier	Well Diameter	Multiplier	1"	0.04	4"	0.65	2"	0.16	6"	1.47	3"	0.37	Other	radius ² * 0.163
Well Diameter	Multiplier	Well Diameter	Multiplier														
1"	0.04	4"	0.65														
2"	0.16	6"	1.47														
3"	0.37	Other	radius ² * 0.163														

Time	Temp (°F or °C)	pH	Cond. (mS or <u>µS</u>)	Turbidity (NTUs)	Gals. Removed	Observations
1415	69.9	6.9	1241	>1000	6.6	gray/odor
1418	69.8	6.9	1256	>1000	3.2	" "
1420	69.6	6.9	1260	>1000	4.8	" "

Did well dewater? Yes No Gallons actually evacuated: 4.8

Sampling Date: 5-17-07 Sampling Time: 1425 Depth to Water: 36.92

Sample I.D.: MW-6 Laboratory: Kiff CalScience Other _____

Analyzed for: TPH-G BTEX MTBE TPH-D Oxygenates (1) Other: Lead Scavengers

EB I.D. (if applicable): _____ @ _____ Time Duplicate I.D. (if applicable): _____

Analyzed for: TPH-G BTEX MTBE TPH-D Oxygenates (5) Other: _____

D.O. (if req'd):	Pre-purge:		mg/L	<input checked="" type="checkbox"/> Post-purge		mg/L
					<u>0.2</u>	
O.R.P. (if req'd):	Pre-purge:		mV	<input checked="" type="checkbox"/> Post-purge:		mV
					<u>-73</u>	

WELL MONITORING DATA SHEET

Project #: 0705/7-DW-1	Client: Arctos Environ.
Sampler: DW	Date: 5-17-07
Well I.D.: MW-7	Well Diameter: (2) 3 4 6 8 _____
Total Well Depth (TD): 46.10	Depth to Water (DTW): 33.31
Depth to Free Product:	Thickness of Free Product (feet):
Referenced to: (PVC) Grade	D.O. Meter (if req'd): YSI HACH
DTW with 80% Recharge [(Height of Water Column x 0.20) + DTW]: 35.86	

Purge Method: Bailer <input checked="" type="checkbox"/> Disposable Bailer Positive Air Displacement Electric Submersible	Waterra Peristaltic Extraction Pump Other _____	Sampling Method: Bailer <input checked="" type="checkbox"/> Disposable Bailer Extraction Port Dedicated Tubing Other: _____
--	--	---

$2 \text{ (Gals.)} \times 3 = 6 \text{ Gals.}$ 1 Case Volume Specified Volumes Calculated Volume	<table border="1" style="width:100%; border-collapse: collapse;"> <thead> <tr> <th>Well Diameter</th> <th>Multiplier</th> <th>Well Diameter</th> <th>Multiplier</th> </tr> </thead> <tbody> <tr> <td>1"</td> <td>0.04</td> <td>4"</td> <td>0.65</td> </tr> <tr> <td>2"</td> <td>0.16</td> <td>6"</td> <td>1.47</td> </tr> <tr> <td>3"</td> <td>0.37</td> <td>Other</td> <td>radius² * 0.163</td> </tr> </tbody> </table>	Well Diameter	Multiplier	Well Diameter	Multiplier	1"	0.04	4"	0.65	2"	0.16	6"	1.47	3"	0.37	Other	radius ² * 0.163
Well Diameter	Multiplier	Well Diameter	Multiplier														
1"	0.04	4"	0.65														
2"	0.16	6"	1.47														
3"	0.37	Other	radius ² * 0.163														

Time	Temp (°F or °C)	pH	Cond. (mS or µS)	Turbidity (NTUs)	Gals. Removed	Observations
1038	68.9	6.9	1124	>1000	2	gray
1041	69.4	7.0	1146	>1000	4	"
1045	69.8	7.0	1153	>1000	6	"

Did well dewater? Yes No Gallons actually evacuated: **6 gals.**

Sampling Date: **5-17-07** Sampling Time: **1050** Depth to Water: **34.80**

Sample I.D.: **MW-7** Laboratory: **(Kiff)** CalScience Other _____

Analyzed for: **(TPH-G) (BTEX) (MTBE) (TPH-D) (Oxygenates (7))** Other: **Lead Scavengers**

EB I.D. (if applicable): _____ @ _____ Time Duplicate I.D. (if applicable): _____

Analyzed for: TPH-G BTEX MTBE TPH-D Oxygenates (5) Other: _____

D.O. (if req'd):	Pre-purge:	mg/L	Post-purge:	mg/L
O.R.P. (if req'd):	Pre-purge:	mV	Post-purge:	mV

WELL MONITORING DATA SHEET

Project #: <u>0705/7-DW-1</u>	Client: <u>Arctos Environ.</u>
Sampler: <u>DW</u>	Date: <u>5-17-07</u>
Well I.D.: <u>MW-8</u>	Well Diameter: <u>(2)</u> 3 4 6 8 _____
Total Well Depth (TD): <u>44.45</u>	Depth to Water (DTW): <u>34.14</u>
Depth to Free Product:	Thickness of Free Product (feet):
Referenced to: <u>(PVC)</u> Grade	D.O. Meter (if req'd): YSI HACH
DTW with 80% Recharge [(Height of Water Column x 0.20) + DTW]: <u>36.20</u>	

Purge Method: Bailer <input checked="" type="checkbox"/> Disposable Bailer Positive Air Displacement Electric Submersible	Waterra Peristaltic Extraction Pump Other _____	Sampling Method: Bailer <input checked="" type="checkbox"/> Disposable Bailer Extraction Port Dedicated Tubing Other: _____
--	--	---

$\underline{1.6} \text{ (Gals.)} \times \underline{3} = \underline{4.8} \text{ Gals.}$ 1 Case Volume Specified Volumes Calculated Volume	<table border="1" style="width:100%; border-collapse: collapse;"> <thead> <tr> <th>Well Diameter</th> <th>Multiplier</th> <th>Well Diameter</th> <th>Multiplier</th> </tr> </thead> <tbody> <tr> <td>1"</td> <td>0.04</td> <td>4"</td> <td>0.65</td> </tr> <tr> <td>2"</td> <td>0.16</td> <td>6"</td> <td>1.47</td> </tr> <tr> <td>3"</td> <td>0.37</td> <td>Other</td> <td>radius² * 0.163</td> </tr> </tbody> </table>	Well Diameter	Multiplier	Well Diameter	Multiplier	1"	0.04	4"	0.65	2"	0.16	6"	1.47	3"	0.37	Other	radius ² * 0.163
Well Diameter	Multiplier	Well Diameter	Multiplier														
1"	0.04	4"	0.65														
2"	0.16	6"	1.47														
3"	0.37	Other	radius ² * 0.163														

Time	Temp (°F or °C)	pH	Cond. (mS or <u>µS</u>)	Turbidity (NTUs)	Gals. Removed	Observations
1013	68.2	6.7	953	>1000	1.6	Brown
1016	69.1	6.7	996	>1000	3.2	"
1019	69.0	6.8	1012	>1000	4.8	"

Did well dewater? Yes No Gallons actually evacuated: 4.8

Sampling Date: 5-17-07 Sampling Time: 1624 Depth to Water: 35.70

Sample I.D.: MW-8 Laboratory: (Kiff) CalScience Other _____

Analyzed for: (TPH-G) (BTEX) (MTBE) TPH-D (Oxygenates (7)) Other: Lead Scavengers

EB I.D. (if applicable): _____ @ _____ Time Duplicate I.D. (if applicable): _____

Analyzed for: TPH-G BTEX MTBE TPH-D Oxygenates (5) Other: _____

D.O. (if req'd):	Pre-purge:	mg/L	Post-purge:	mg/L
O.R.P. (if req'd):	Pre-purge:	mV	Post-purge:	mV

WELL MONITORING DATA SHEET

Project #: 0705/7-DW-1	Client: Arctos Environ.
Sampler: DW	Date: 5-17-07
Well I.D.: MW-10	Well Diameter: (2) 3 4 6 8 _____
Total Well Depth (TD): 45.15	Depth to Water (DTW): 35.85
Depth to Free Product:	Thickness of Free Product (feet):
Referenced to: (PVC) Grade	D.O. Meter (if req'd): YSI HACH
DTW with 80% Recharge [(Height of Water Column x 0.20) + DTW]: 37.71	

Purge Method: Bailer <input checked="" type="checkbox"/> Disposable Bailer Positive Air Displacement Electric Submersible	Waterra Peristaltic Extraction Pump Other _____	Sampling Method: Bailer <input checked="" type="checkbox"/> Disposable Bailer Extraction Port Dedicated Tubing Other: _____
--	--	---

1.5 (Gals.) X	3 Specified Volumes	= 4.5 Gals. Calculated Volume
----------------------	----------------------------	--------------------------------------

Well Diameter	Multiplier	Well Diameter	Multiplier
1"	0.04	4"	0.65
2"	0.16	6"	1.47
3"	0.37	Other	radius ² * 0.163

Time	Temp (°F or °C)	pH	Cond. (mS or µS)	Turbidity (NTUs)	Gals. Removed	Observations
1059	69.6	7.0	1172	>1000	1.5	Brown
1102	69.5	7.1	1260	>1000	3.0	"
1105	69.6	7.2	1295	>1000	4.5	"

Did well dewater? Yes No Gallons actually evacuated: **4.5**

Sampling Date: **5-17-07** Sampling Time: **1110** Depth to Water: **36.91**

Sample I.D.: **MW-10** Laboratory: **(Kiff)** CalScience Other _____

Analyzed for: **(TPH-G) (BTEX) (MTBE) TPH-D (Oxygenates (7))** Other: **Lead Scavengers**

EB I.D. (if applicable): _____ @ _____ Time Duplicate I.D. (if applicable): _____

Analyzed for: TPH-G BTEX MTBE TPH-D Oxygenates (5) Other: _____

D.O. (if req'd):	Pre-purge:	mg/L	Post-purge:	mg/L
O.R.P. (if req'd):	Pre-purge:	mV	Post-purge:	mV

WELL MONITORING DATA SHEET

Project #: <u>0705/7-DW-1</u>	Client: <u>Arctos Environ.</u>
Sampler: <u>DW</u>	Date: <u>5-17-07</u>
Well I.D.: <u>TP-1</u>	Well Diameter: <u>(2)</u> 3 4 6 8
Total Well Depth (TD): <u>43.30</u>	Depth to Water (DTW): <u>33.52</u>
Depth to Free Product:	Thickness of Free Product (feet):
Referenced to: <u>(PVC)</u> Grade	D.O. Meter (if req'd): YSI HACH
DTW with 80% Recharge [(Height of Water Column x 0.20) + DTW]: <u>35.47</u>	

Purge Method: Bailer Disposable Bailer Positive Air Displacement Electric Submersible	Waterra Peristaltic Extraction Pump Other _____	Sampling Method: Bailer X Disposable Bailer Extraction Port Dedicated Tubing Other: _____
--	--	---

<u>1.6</u> (Gals.) X	<u>3</u>	= <u>4.8</u> Gals.
1 Case Volume	Specified Volumes	Calculated Volume

Well Diameter	Multiplier	Well Diameter	Multiplier
1"	0.04	4"	0.65
2"	0.16	6"	1.47
3"	0.37	Other	radius ² * 0.163

Time	Temp (° or °C)	pH	Cond. (mS or <u>µS</u>)	Turbidity (NTUs)	Gals. Removed	Observations
1453	69.6	6.9	1233	>1000	1.6	gray/odor
1456	69.7	6.9	1247	>1000	3.2	" "
<u>(2)</u> 1459 1459	69.6	6.9	1237	>1000	4.8	" "

Did well dewater? Yes No Gallons actually evacuated: 4.8

Sampling Date: 5-17-07 Sampling Time: 1504 Depth to Water: 34.22

Sample I.D.: TP-1 Laboratory: (Kiff) CalScience Other _____

Analyzed for: (TPH-G) (BTEX) (MTBE) TPH-D (Oxygenates (7)) Other: Lead Scavengers

EB I.D. (if applicable): _____ @ _____ Time Duplicate I.D. (if applicable): _____

Analyzed for: TPH-G BTEX MTBE TPH-D Oxygenates (5) Other: _____

D.O. (if req'd):	Pre-purge:	mg/L	Post-purge:	mg/L
O.R.P. (if req'd):	Pre-purge:	mV	Post-purge:	mV

WELL MONITORING DATA SHEET

Project #: 0705/7-DW-1	Client: Arctos Environ.
Sampler: DW	Date: 5-17-07
Well I.D.: TP-2	Well Diameter: (2) 3 4 6 8 _____
Total Well Depth (TD): 42.01	Depth to Water (DTW): 33.28
Depth to Free Product:	Thickness of Free Product (feet):
Referenced to: (PVC) Grade	D.O. Meter (if req'd): YSI HACH
DTW with 80% Recharge [(Height of Water Column x 0.20) + DTW]: 35.02	

Purge Method: Bailer <input checked="" type="checkbox"/> Disposable Bailer Positive Air Displacement Electric Submersible	Waterra Peristaltic Extraction Pump Other _____	Sampling Method: Bailer <input checked="" type="checkbox"/> Disposable Bailer Extraction Port Dedicated Tubing Other: _____
--	--	---

1.4 (Gals.) X	3 Specified Volumes	= 4.2 Gals. Calculated Volume
1 Case Volume	Specified Volumes	Calculated Volume

Well Diameter	Multiplier	Well Diameter	Multiplier
1"	0.04	4"	0.65
2"	0.16	6"	1.47
3"	0.37	Other	radius ² * 0.163

Time	Temp (°F or °C)	pH	Cond. (mS or (µS))	Turbidity (NTUs)	Gals. Removed	Observations
1515	71.0	6.9	1275	>1000	1.4	gray/odor
1518	70.4	6.9	1282	>1000	2.8	" "
1520	70.2	6.9	1279	>1000	4.2	" "

Did well dewater? Yes No Gallons actually evacuated: **4.2**

Sampling Date: **5-17-07** Sampling Time: **1525** Depth to Water: **34.01**

Sample I.D.: **TP-2** Laboratory: **(Kiff)** CalScience Other _____

Analyzed for: **(TPH-G)** **(BTEX)** **(MTBE)** TPH-D **(Oxygenates (1))** Other: **Lead Scavengers**

EB I.D. (if applicable): _____ @ _____ Time Duplicate I.D. (if applicable): _____

Analyzed for: TPH-G BTEX MTBE TPH-D Oxygenates (5) Other: _____

D.O. (if req'd):	Pre-purge:	mg/L	Post-purge:	mg/L
O.R.P. (if req'd):	Pre-purge:	mV	Post-purge:	mV

WELL MONITORING DATA SHEET

Project #: 0705/7-DW-1	Client: Arctos Environ.
Sampler: DW	Date: 5-17-07
Well I.D.: VW-2	Well Diameter: 2 3 4 6 8 _____
Total Well Depth (TD): 36.70	Depth to Water (DTW): 33.17
Depth to Free Product:	Thickness of Free Product (feet):
Referenced to: PVC Grade	D.O. Meter (if req'd): YSI HACH
DTW with 80% Recharge [(Height of Water Column x 0.20) + DTW]:	

Purge Method: Bailer Disposable Bailer Positive Air Displacement Electric Submersible	Waterra Peristaltic Extraction Pump Other _____	Sampling Method: Bailer Disposable Bailer Extraction Port Dedicated Tubing Other: _____
--	---	---

_____ (Gals.) X _____ = _____ Gals. 1 Case Volume Specified Volumes Calculated Volume	<table border="1" style="width:100%; border-collapse: collapse;"> <thead> <tr> <th>Well Diameter</th> <th>Multiplier</th> <th>Well Diameter</th> <th>Multiplier</th> </tr> </thead> <tbody> <tr> <td>1"</td> <td>0.04</td> <td>4"</td> <td>0.65</td> </tr> <tr> <td>2"</td> <td>0.16</td> <td>6"</td> <td>1.47</td> </tr> <tr> <td>3"</td> <td>0.37</td> <td>Other</td> <td>radius² * 0.163</td> </tr> </tbody> </table>	Well Diameter	Multiplier	Well Diameter	Multiplier	1"	0.04	4"	0.65	2"	0.16	6"	1.47	3"	0.37	Other	radius ² * 0.163
Well Diameter	Multiplier	Well Diameter	Multiplier														
1"	0.04	4"	0.65														
2"	0.16	6"	1.47														
3"	0.37	Other	radius ² * 0.163														

Time	Temp (F or °C)	pH	Cond. (mS or µS)	Turbidity (NTUs)	Gals. Removed	Observations
0945	66.8	6.4	1451	10	—	

Did well dewater? Yes No Gallons actually evacuated: —

Sampling Date: **5-17-07** Sampling Time: **0945** Depth to Water:

Sample I.D.: **VW-2** Laboratory: **Kiff** CalScience Other _____

Analyzed for: **TPH-G** **BTEX** **MTBE** TPH-D **Oxygenates (7)** Other: **Lead Scavengers**

EB I.D. (if applicable): _____ @ _____ Time Duplicate I.D. (if applicable):

Analyzed for: TPH-G BTEX MTBE TPH-D Oxygenates (5) Other:

D.O. (if req'd):	Pre-purge:	mg/L	Post-purge:	mg/L
O.R.P. (if req'd):	Pre-purge:	mV	Post-purge:	mV

WELL MONITORING DATA SHEET

Project #: 0705/7-DW-1	Client: Arctos Environ.
Sampler: DW	Date: 5-17-07
Well I.D.: VW-3	Well Diameter: ② 3 4 6 8
Total Well Depth (TD): 36.30	Depth to Water (DTW): 31.70
Depth to Free Product:	Thickness of Free Product (feet):
Referenced to: PVC Grade	D.O. Meter (if req'd): YSI HACH
DTW with 80% Recharge [(Height of Water Column x 0.20) + DTW]:	

Purge Method: ~~Bailer~~ ~~Disposable Bailer~~ ~~Positive Air Displacement~~ ~~Electric Submersible~~ ~~Waterra~~ ~~Peristaltic~~ ~~Extraction Pump~~ Other _____

Sampling Method: Bailer Disposable Bailer Extraction Port Dedicated Tubing Other: _____

_____ (Gals.) X _____ = _____ Gals. I Case Volume Specified Volumes Calculated Volume	<table border="1" style="width: 100%; border-collapse: collapse;"> <thead> <tr> <th>Well Diameter</th> <th>Multiplier</th> <th>Well Diameter</th> <th>Multiplier</th> </tr> </thead> <tbody> <tr> <td>1"</td> <td>0.04</td> <td>4"</td> <td>0.65</td> </tr> <tr> <td>2"</td> <td>0.16</td> <td>6"</td> <td>1.47</td> </tr> <tr> <td>3"</td> <td>0.37</td> <td>Other</td> <td>radius² * 0.163</td> </tr> </tbody> </table>	Well Diameter	Multiplier	Well Diameter	Multiplier	1"	0.04	4"	0.65	2"	0.16	6"	1.47	3"	0.37	Other	radius ² * 0.163
Well Diameter	Multiplier	Well Diameter	Multiplier														
1"	0.04	4"	0.65														
2"	0.16	6"	1.47														
3"	0.37	Other	radius ² * 0.163														

Time	Temp (°F or °C)	pH	Cond. (mS or μ S)	Turbidity (NTUs)	Gals. Removed	Observations
0905	66.7	6.2	2174	13	—	

Did well dewater? Yes No Gallons actually evacuated: **—**

Sampling Date: **5-17-07** Sampling Time: **0905** Depth to Water:

Sample I.D.: **VW-3** Laboratory: **Kiff** CalScience Other _____

Analyzed for: **TPH-G** **BTEX** **MTBE** TPH-D **Oxygenates (7)** Other: **Lead Scavengers**

EB I.D. (if applicable): _____ @ _____ Time Duplicate I.D. (if applicable):

Analyzed for: TPH-G BTEX MTBE TPH-D Oxygenates (5) Other:

D.O. (if req'd):	Pre-purge:	mg/L	Post-purge:	mg/L
O.R.P. (if req'd):	Pre-purge:	mV	Post-purge:	mV

SPH or Purge Water Drum Log

Client: Arctos Environmental
 Site Address: 1619 1st Street Livermore

STATUS OF DRUM(S) UPON ARRIVAL						
Date	11-21-05	2/9/06	8/9/06	11/8/06	2/14/07	5-17-07
Number of drum(s) empty:		2	0		0	
Number of drum(s) 1/4 full:				1		
Number of drum(s) 1/2 full:						
Number of drum(s) 3/4 full:	1	1				
Number of drum(s) full:		2		3		
Total drum(s) on site:	2 (used oil filters)		0	4	0	0
Are the drum(s) properly labeled?		Y	-	Y	-	-
Drum ID & Contents:	Haz waste	2 soil cuttings (17 drums)	-	Purge water	-	-
If any drum(s) are partially or totally filled, what is the first use date:		1/27/06	-	-	-	-

- If you add any SPH to an empty or partially filled drum, drum must have at least 20 gals. of Purge water or DI Water.
- If drum contains SPH, the drum MUST be steel AND labeled with the appropriate label.
- All BTS drums MUST be labeled appropriately.

STATUS OF DRUM(S) UPON DEPARTURE						
Date	11-22-05	2/9/06	8/9/06	11/8/06	2/14/07	5-17-07
Number of drums empty:						
Number of drum(s) 1/4 full:			1		1	1
Number of drum(s) 1/2 full:	1			1		
Number of drum(s) 3/4 full:	1	1				
Number of drum(s) full:	1	6	3	6	3	3
Total drum(s) on site:	6	7	4	7	4	4
Are the drum(s) properly labeled?	yes	Y	Y	Y	Yes	Y
Drum ID & Contents:	purge water	soil cuttings drums	purge water	purge water	Purge water	purge water

LOCATION OF DRUM(S)
 Describe location of drum(s): In compound to left of bldg. By ARW / (2/14/07)

FINAL STATUS						
Number of new drum(s) left on site this event	4	2	4	3	4	4
Date of inspection:	11-22-05	2/9/06	8/9/06	11/8/06	2/14/07	5-17-07
Drum(s) labelled properly:	Y	Y	Y	Y	YES	Y
Logged by BTS Field Tech:	DW	PC	PC	PC	EM	DW
Office reviewed by:	W	A				HL

APPENDIX B

**LABORATORY ANALYTICAL REPORTS AND
CHAIN-OF-CUSTODY FORM**



Report Number : 56585

Date : 5/29/2007

Mike Purchase
Arctos Environmental
1332 Peralta Avenue
Berkeley, CA 94702

Subject : 14 Water Samples
Project Name : Tesoro - Livermore
Project Number : 070517-DW-1

Dear Mr. Purchase,

Chemical analysis of the samples referenced above has been completed. Summaries of the data are contained on the following pages. Sample(s) were received under documented chain-of-custody. US EPA protocols for sample storage and preservation were followed.

Kiff Analytical is certified by the State of California (# 2236). If you have any questions regarding procedures or results, please call me at 530-297-4800.

Sincerely,

A handwritten signature in black ink, appearing to read "Joel Kiff".

Joel Kiff



Subject : 14 Water Samples
Project Name : Tesoro - Livermore
Project Number : 070517-DW-1

Case Narrative

The Method Reporting Limit for Methanol has been increased due to the presence of an interfering compound for samples MW-2, MW-6 and TP-1.

The Method Reporting Limit for Ethanol has been increased due to the presence of an interfering compound for sample MW-1.

The Method Reporting Limit for Diisopropyl ether has been increased due to the presence of an interfering compound for sample TP-2.

Approved By: _____


Joel Kiff



Report Number : 56585

Date : 5/29/2007

Project Name : Tesoro - Livermore

Project Number : 070517-DW-1

Sample : MW-1

Matrix : Water

Lab Number : 56585-01

Sample Date :5/17/2007

Parameter	Measured Value	Method Reporting Limit	Units	Analysis Method	Date Analyzed
Benzene	< 0.50	0.50	ug/L	EPA 8260B	5/23/2007
Toluene	0.66	0.50	ug/L	EPA 8260B	5/23/2007
Ethylbenzene	17	0.50	ug/L	EPA 8260B	5/23/2007
Total Xylenes	21	0.50	ug/L	EPA 8260B	5/23/2007
Methyl-t-butyl ether (MTBE)	< 0.50	0.50	ug/L	EPA 8260B	5/23/2007
Diisopropyl ether (DIPE)	< 0.50	0.50	ug/L	EPA 8260B	5/23/2007
Ethyl-t-butyl ether (ETBE)	< 0.50	0.50	ug/L	EPA 8260B	5/23/2007
Tert-amyl methyl ether (TAME)	< 0.50	0.50	ug/L	EPA 8260B	5/23/2007
Tert-Butanol	< 5.0	5.0	ug/L	EPA 8260B	5/23/2007
Methanol	< 50	50	ug/L	EPA 8260B	5/23/2007
Ethanol	< 8.0	8.0	ug/L	EPA 8260B	5/23/2007
TPH as Gasoline	2300	50	ug/L	EPA 8260B	5/23/2007
Toluene - d8 (Surr)	101		% Recovery	EPA 8260B	5/23/2007
4-Bromofluorobenzene (Surr)	102		% Recovery	EPA 8260B	5/23/2007

Approved By:

Joel Kiff



Report Number : 56585

Date : 5/29/2007

Project Name : Tesoro - Livermore

Project Number : 070517-DW-1

Sample : MW-2

Matrix : Water

Lab Number : 56585-02

Sample Date :5/17/2007

Parameter	Measured Value	Method Reporting Limit	Units	Analysis Method	Date Analyzed
Benzene	7400	15	ug/L	EPA 8260B	5/25/2007
Toluene	680	9.0	ug/L	EPA 8260B	5/24/2007
Ethylbenzene	1900	9.0	ug/L	EPA 8260B	5/24/2007
Total Xylenes	2400	9.0	ug/L	EPA 8260B	5/24/2007
Methyl-t-butyl ether (MTBE)	3000	9.0	ug/L	EPA 8260B	5/24/2007
Diisopropyl ether (DIPE)	< 9.0	9.0	ug/L	EPA 8260B	5/24/2007
Ethyl-t-butyl ether (ETBE)	< 9.0	9.0	ug/L	EPA 8260B	5/24/2007
Tert-amyl methyl ether (TAME)	24	9.0	ug/L	EPA 8260B	5/24/2007
Tert-Butanol	2600	50	ug/L	EPA 8260B	5/24/2007
Methanol	< 4000	4000	ug/L	EPA 8260B	5/24/2007
Ethanol	< 90	90	ug/L	EPA 8260B	5/24/2007
TPH as Gasoline	37000	900	ug/L	EPA 8260B	5/24/2007
Toluene - d8 (Surr)	99.6		% Recovery	EPA 8260B	5/24/2007
4-Bromofluorobenzene (Surr)	103		% Recovery	EPA 8260B	5/24/2007

Approved By:

Joel Kiff



Report Number : 56585

Date : 5/29/2007

Project Name : Tesoro - Livermore

Project Number : 070517-DW-1

Sample : MW-3

Matrix : Water

Lab Number : 56585-03

Sample Date :5/17/2007

Parameter	Measured Value	Method Reporting Limit	Units	Analysis Method	Date Analyzed
Benzene	< 0.50	0.50	ug/L	EPA 8260B	5/23/2007
Toluene	< 0.50	0.50	ug/L	EPA 8260B	5/23/2007
Ethylbenzene	< 0.50	0.50	ug/L	EPA 8260B	5/23/2007
Total Xylenes	< 0.50	0.50	ug/L	EPA 8260B	5/23/2007
Methyl-t-butyl ether (MTBE)	0.54	0.50	ug/L	EPA 8260B	5/23/2007
Diisopropyl ether (DIPE)	< 0.50	0.50	ug/L	EPA 8260B	5/23/2007
Ethyl-t-butyl ether (ETBE)	< 0.50	0.50	ug/L	EPA 8260B	5/23/2007
Tert-amyl methyl ether (TAME)	< 0.50	0.50	ug/L	EPA 8260B	5/23/2007
Tert-Butanol	< 5.0	5.0	ug/L	EPA 8260B	5/23/2007
Methanol	< 50	50	ug/L	EPA 8260B	5/23/2007
Ethanol	< 5.0	5.0	ug/L	EPA 8260B	5/23/2007
TPH as Gasoline	< 50	50	ug/L	EPA 8260B	5/23/2007
Toluene - d8 (Surr)	102		% Recovery	EPA 8260B	5/23/2007
4-Bromofluorobenzene (Surr)	102		% Recovery	EPA 8260B	5/23/2007

Approved By:

Joel Kiff



Report Number : 56585

Date : 5/29/2007

Project Name : Tesoro - Livermore

Project Number : 070517-DW-1

Sample : MW-4

Matrix : Water

Lab Number : 56585-04

Sample Date :5/17/2007

Parameter	Measured Value	Method Reporting Limit	Units	Analysis Method	Date Analyzed
Benzene	< 0.50	0.50	ug/L	EPA 8260B	5/25/2007
Toluene	< 0.50	0.50	ug/L	EPA 8260B	5/25/2007
Ethylbenzene	< 0.50	0.50	ug/L	EPA 8260B	5/25/2007
Total Xylenes	< 0.50	0.50	ug/L	EPA 8260B	5/25/2007
Methyl-t-butyl ether (MTBE)	< 0.50	0.50	ug/L	EPA 8260B	5/25/2007
Diisopropyl ether (DIPE)	< 0.50	0.50	ug/L	EPA 8260B	5/25/2007
Ethyl-t-butyl ether (ETBE)	< 0.50	0.50	ug/L	EPA 8260B	5/25/2007
Tert-amyl methyl ether (TAME)	< 0.50	0.50	ug/L	EPA 8260B	5/25/2007
Tert-Butanol	< 5.0	5.0	ug/L	EPA 8260B	5/25/2007
Methanol	< 50	50	ug/L	EPA 8260B	5/25/2007
Ethanol	< 5.0	5.0	ug/L	EPA 8260B	5/25/2007
TPH as Gasoline	< 50	50	ug/L	EPA 8260B	5/25/2007
Toluene - d8 (Surr)	102		% Recovery	EPA 8260B	5/25/2007
4-Bromofluorobenzene (Surr)	104		% Recovery	EPA 8260B	5/25/2007

Approved By:

Joel Kiff



Report Number : 56585

Date : 5/29/2007

Project Name : **Tesoro - Livermore**

Project Number : **070517-DW-1**

Sample : **MW-5**

Matrix : Water

Lab Number : 56585-05

Sample Date :5/17/2007

Parameter	Measured Value	Method Reporting Limit	Units	Analysis Method	Date Analyzed
Benzene	< 0.50	0.50	ug/L	EPA 8260B	5/24/2007
Toluene	< 0.50	0.50	ug/L	EPA 8260B	5/24/2007
Ethylbenzene	< 0.50	0.50	ug/L	EPA 8260B	5/24/2007
Total Xylenes	< 0.50	0.50	ug/L	EPA 8260B	5/24/2007
Methyl-t-butyl ether (MTBE)	1.4	0.50	ug/L	EPA 8260B	5/24/2007
Diisopropyl ether (DIPE)	< 0.50	0.50	ug/L	EPA 8260B	5/24/2007
Ethyl-t-butyl ether (ETBE)	< 0.50	0.50	ug/L	EPA 8260B	5/24/2007
Tert-amyl methyl ether (TAME)	< 0.50	0.50	ug/L	EPA 8260B	5/24/2007
Tert-Butanol	< 5.0	5.0	ug/L	EPA 8260B	5/24/2007
Methanol	< 50	50	ug/L	EPA 8260B	5/24/2007
Ethanol	< 5.0	5.0	ug/L	EPA 8260B	5/24/2007
TPH as Gasoline	140	50	ug/L	EPA 8260B	5/24/2007
Toluene - d8 (Surr)	101		% Recovery	EPA 8260B	5/24/2007
4-Bromofluorobenzene (Surr)	104		% Recovery	EPA 8260B	5/24/2007

Approved By:

Joel Kiff



Report Number : 56585

Date : 5/29/2007

Project Name : Tesoro - Livermore

Project Number : 070517-DW-1

Sample : MW-6

Matrix : Water

Lab Number : 56585-06

Sample Date :5/17/2007

Parameter	Measured Value	Method Reporting Limit	Units	Analysis Method	Date Analyzed
Benzene	240	0.50	ug/L	EPA 8260B	5/23/2007
Toluene	3.4	0.50	ug/L	EPA 8260B	5/23/2007
Ethylbenzene	30	0.50	ug/L	EPA 8260B	5/23/2007
Total Xylenes	10	0.50	ug/L	EPA 8260B	5/23/2007
Methyl-t-butyl ether (MTBE)	770	2.5	ug/L	EPA 8260B	5/24/2007
Diisopropyl ether (DIPE)	< 0.50	0.50	ug/L	EPA 8260B	5/23/2007
Ethyl-t-butyl ether (ETBE)	< 0.50	0.50	ug/L	EPA 8260B	5/23/2007
Tert-amyl methyl ether (TAME)	9.2	0.50	ug/L	EPA 8260B	5/23/2007
Tert-Butanol	800	5.0	ug/L	EPA 8260B	5/23/2007
Methanol	< 2000	2000	ug/L	EPA 8260B	5/24/2007
Ethanol	< 5.0	5.0	ug/L	EPA 8260B	5/23/2007
TPH as Gasoline	3700	250	ug/L	EPA 8260B	5/24/2007
Toluene - d8 (Surr)	96.8		% Recovery	EPA 8260B	5/23/2007
4-Bromofluorobenzene (Surr)	103		% Recovery	EPA 8260B	5/23/2007

Approved By:

Joel Kiff



Report Number : 56585

Date : 5/29/2007

Project Name : Tesoro - Livermore

Project Number : 070517-DW-1

Sample : MW-7

Matrix : Water

Lab Number : 56585-07

Sample Date :5/17/2007

Parameter	Measured Value	Method Reporting Limit	Units	Analysis Method	Date Analyzed
Benzene	< 0.50	0.50	ug/L	EPA 8260B	5/24/2007
Toluene	< 0.50	0.50	ug/L	EPA 8260B	5/24/2007
Ethylbenzene	< 0.50	0.50	ug/L	EPA 8260B	5/24/2007
Total Xylenes	0.71	0.50	ug/L	EPA 8260B	5/24/2007
Methyl-t-butyl ether (MTBE)	< 0.50	0.50	ug/L	EPA 8260B	5/24/2007
Diisopropyl ether (DIPE)	< 0.50	0.50	ug/L	EPA 8260B	5/24/2007
Ethyl-t-butyl ether (ETBE)	< 0.50	0.50	ug/L	EPA 8260B	5/24/2007
Tert-amyl methyl ether (TAME)	< 0.50	0.50	ug/L	EPA 8260B	5/24/2007
Tert-Butanol	< 5.0	5.0	ug/L	EPA 8260B	5/24/2007
Methanol	< 50	50	ug/L	EPA 8260B	5/24/2007
Ethanol	< 5.0	5.0	ug/L	EPA 8260B	5/24/2007
TPH as Gasoline	700	50	ug/L	EPA 8260B	5/24/2007
Toluene - d8 (Surr)	102		% Recovery	EPA 8260B	5/24/2007
4-Bromofluorobenzene (Surr)	104		% Recovery	EPA 8260B	5/24/2007

Approved By:

Joel Kiff



Report Number : 56585

Date : 5/29/2007

Project Name : Tesoro - Livermore

Project Number : 070517-DW-1

Sample : MW-8

Matrix : Water

Lab Number : 56585-08

Sample Date :5/17/2007

Parameter	Measured Value	Method Reporting Limit	Units	Analysis Method	Date Analyzed
Benzene	< 0.50	0.50	ug/L	EPA 8260B	5/23/2007
Toluene	< 0.50	0.50	ug/L	EPA 8260B	5/23/2007
Ethylbenzene	< 0.50	0.50	ug/L	EPA 8260B	5/23/2007
Total Xylenes	< 0.50	0.50	ug/L	EPA 8260B	5/23/2007
Methyl-t-butyl ether (MTBE)	< 0.50	0.50	ug/L	EPA 8260B	5/23/2007
Diisopropyl ether (DIPE)	< 0.50	0.50	ug/L	EPA 8260B	5/23/2007
Ethyl-t-butyl ether (ETBE)	< 0.50	0.50	ug/L	EPA 8260B	5/23/2007
Tert-amyl methyl ether (TAME)	< 0.50	0.50	ug/L	EPA 8260B	5/23/2007
Tert-Butanol	< 5.0	5.0	ug/L	EPA 8260B	5/23/2007
Methanol	< 50	50	ug/L	EPA 8260B	5/23/2007
Ethanol	< 5.0	5.0	ug/L	EPA 8260B	5/23/2007
TPH as Gasoline	< 50	50	ug/L	EPA 8260B	5/23/2007
Toluene - d8 (Surr)	101		% Recovery	EPA 8260B	5/23/2007
4-Bromofluorobenzene (Surr)	101		% Recovery	EPA 8260B	5/23/2007

Approved By:

Joel Kiff



Report Number : 56585

Date : 5/29/2007

Project Name : Tesoro - Livermore

Project Number : 070517-DW-1

Sample : MW-9

Matrix : Water

Lab Number : 56585-09

Sample Date :5/17/2007

Parameter	Measured Value	Method Reporting Limit	Units	Analysis Method	Date Analyzed
Benzene	< 0.50	0.50	ug/L	EPA 8260B	5/24/2007
Toluene	< 0.50	0.50	ug/L	EPA 8260B	5/24/2007
Ethylbenzene	0.54	0.50	ug/L	EPA 8260B	5/24/2007
Total Xylenes	< 0.50	0.50	ug/L	EPA 8260B	5/24/2007
Methyl-t-butyl ether (MTBE)	0.93	0.50	ug/L	EPA 8260B	5/24/2007
Diisopropyl ether (DIPE)	< 0.50	0.50	ug/L	EPA 8260B	5/24/2007
Ethyl-t-butyl ether (ETBE)	< 0.50	0.50	ug/L	EPA 8260B	5/24/2007
Tert-amyl methyl ether (TAME)	< 0.50	0.50	ug/L	EPA 8260B	5/24/2007
Tert-Butanol	< 5.0	5.0	ug/L	EPA 8260B	5/24/2007
Methanol	< 50	50	ug/L	EPA 8260B	5/24/2007
Ethanol	< 5.0	5.0	ug/L	EPA 8260B	5/24/2007
TPH as Gasoline	870	50	ug/L	EPA 8260B	5/24/2007
Toluene - d8 (Surr)	102		% Recovery	EPA 8260B	5/24/2007
4-Bromofluorobenzene (Surr)	104		% Recovery	EPA 8260B	5/24/2007

Approved By:

Joel Kiff



Report Number : 56585

Date : 5/29/2007

Project Name : Tesoro - Livermore

Project Number : 070517-DW-1

Sample : MW-10

Matrix : Water

Lab Number : 56585-10

Sample Date :5/17/2007

Parameter	Measured Value	Method Reporting Limit	Units	Analysis Method	Date Analyzed
Benzene	< 0.50	0.50	ug/L	EPA 8260B	5/24/2007
Toluene	< 0.50	0.50	ug/L	EPA 8260B	5/24/2007
Ethylbenzene	< 0.50	0.50	ug/L	EPA 8260B	5/24/2007
Total Xylenes	< 0.50	0.50	ug/L	EPA 8260B	5/24/2007
Methyl-t-butyl ether (MTBE)	< 0.50	0.50	ug/L	EPA 8260B	5/24/2007
Diisopropyl ether (DIPE)	< 0.50	0.50	ug/L	EPA 8260B	5/24/2007
Ethyl-t-butyl ether (ETBE)	< 0.50	0.50	ug/L	EPA 8260B	5/24/2007
Tert-amyl methyl ether (TAME)	< 0.50	0.50	ug/L	EPA 8260B	5/24/2007
Tert-Butanol	< 5.0	5.0	ug/L	EPA 8260B	5/24/2007
Methanol	< 50	50	ug/L	EPA 8260B	5/24/2007
Ethanol	< 5.0	5.0	ug/L	EPA 8260B	5/24/2007
TPH as Gasoline	< 50	50	ug/L	EPA 8260B	5/24/2007
Toluene - d8 (Surr)	102		% Recovery	EPA 8260B	5/24/2007
4-Bromofluorobenzene (Surr)	101		% Recovery	EPA 8260B	5/24/2007

Approved By:

Joel Kiff



Report Number : 56585

Date : 5/29/2007

Project Name : Tesoro - Livermore

Project Number : 070517-DW-1

Sample : TP-1

Matrix : Water

Lab Number : 56585-11

Sample Date :5/17/2007

Parameter	Measured Value	Method Reporting Limit	Units	Analysis Method	Date Analyzed
Benzene	850	25	ug/L	EPA 8260B	5/24/2007
Toluene	35	25	ug/L	EPA 8260B	5/24/2007
Ethylbenzene	810	25	ug/L	EPA 8260B	5/24/2007
Total Xylenes	1200	25	ug/L	EPA 8260B	5/24/2007
Methyl-t-butyl ether (MTBE)	6700	25	ug/L	EPA 8260B	5/24/2007
Diisopropyl ether (DIPE)	< 10	10	ug/L	EPA 8260B	5/25/2007
Ethyl-t-butyl ether (ETBE)	< 10	10	ug/L	EPA 8260B	5/25/2007
Tert-amyl methyl ether (TAME)	42	25	ug/L	EPA 8260B	5/24/2007
Tert-Butanol	12000	150	ug/L	EPA 8260B	5/24/2007
Methanol	< 2000	2000	ug/L	EPA 8260B	5/25/2007
Ethanol	< 100	100	ug/L	EPA 8260B	5/25/2007
TPH as Gasoline	16000	2500	ug/L	EPA 8260B	5/24/2007
Toluene - d8 (Surr)	101		% Recovery	EPA 8260B	5/24/2007
4-Bromofluorobenzene (Surr)	102		% Recovery	EPA 8260B	5/24/2007

Approved By:

Joel Kiff



Report Number : 56585

Date : 5/29/2007

Project Name : Tesoro - Livermore

Project Number : 070517-DW-1

Sample : TP-2

Matrix : Water

Lab Number : 56585-12

Sample Date :5/17/2007

Parameter	Measured Value	Method Reporting Limit	Units	Analysis Method	Date Analyzed
Benzene	2400	250	ug/L	EPA 8260B	5/25/2007
Toluene	51	0.50	ug/L	EPA 8260B	5/24/2007
Ethylbenzene	1500	250	ug/L	EPA 8260B	5/25/2007
Total Xylenes	510	250	ug/L	EPA 8260B	5/25/2007
Methyl-t-butyl ether (MTBE)	69000	250	ug/L	EPA 8260B	5/25/2007
Diisopropyl ether (DIPE)	< 2.0	2.0	ug/L	EPA 8260B	5/24/2007
Ethyl-t-butyl ether (ETBE)	< 0.50	0.50	ug/L	EPA 8260B	5/24/2007
Tert-amyl methyl ether (TAME)	550	250	ug/L	EPA 8260B	5/25/2007
Tert-Butanol	4300	1500	ug/L	EPA 8260B	5/25/2007
Methanol	< 25000	25000	ug/L	EPA 8260B	5/25/2007
Ethanol	< 5.0	5.0	ug/L	EPA 8260B	5/24/2007
TPH as Gasoline	< 25000	25000	ug/L	EPA 8260B	5/25/2007
Toluene - d8 (Surr)	82.7		% Recovery	EPA 8260B	5/24/2007
4-Bromofluorobenzene (Surr)	98.9		% Recovery	EPA 8260B	5/24/2007

Approved By:

Joel Kiff



Report Number : 56585

Date : 5/29/2007

Project Name : **Tesoro - Livermore**

Project Number : **070517-DW-1**

Sample : **VW-2**

Matrix : Water

Lab Number : 56585-13

Sample Date :5/17/2007

Parameter	Measured Value	Method Reporting Limit	Units	Analysis Method	Date Analyzed
Benzene	51	2.5	ug/L	EPA 8260B	5/25/2007
Toluene	7.3	2.5	ug/L	EPA 8260B	5/25/2007
Ethylbenzene	17	2.5	ug/L	EPA 8260B	5/25/2007
Total Xylenes	24	2.5	ug/L	EPA 8260B	5/25/2007
Methyl-t-butyl ether (MTBE)	100	2.5	ug/L	EPA 8260B	5/25/2007
Diisopropyl ether (DIPE)	< 2.5	2.5	ug/L	EPA 8260B	5/25/2007
Ethyl-t-butyl ether (ETBE)	< 2.5	2.5	ug/L	EPA 8260B	5/25/2007
Tert-amyl methyl ether (TAME)	< 2.5	2.5	ug/L	EPA 8260B	5/25/2007
Tert-Butanol	7100	15	ug/L	EPA 8260B	5/25/2007
Methanol	< 250	250	ug/L	EPA 8260B	5/25/2007
Ethanol	< 25	25	ug/L	EPA 8260B	5/25/2007
TPH as Gasoline	3500	250	ug/L	EPA 8260B	5/25/2007
Toluene - d8 (Surr)	103		% Recovery	EPA 8260B	5/25/2007
4-Bromofluorobenzene (Surr)	104		% Recovery	EPA 8260B	5/25/2007

Approved By:

Joel Kiff



Report Number : 56585

Date : 5/29/2007

Project Name : **Tesoro - Livermore**

Project Number : **070517-DW-1**

Sample : **VW-3**

Matrix : Water

Lab Number : 56585-14

Sample Date :5/17/2007

Parameter	Measured Value	Method Reporting Limit	Units	Analysis Method	Date Analyzed
Benzene	< 0.50	0.50	ug/L	EPA 8260B	5/24/2007
Toluene	< 0.50	0.50	ug/L	EPA 8260B	5/24/2007
Ethylbenzene	< 0.50	0.50	ug/L	EPA 8260B	5/24/2007
Total Xylenes	< 0.50	0.50	ug/L	EPA 8260B	5/24/2007
Methyl-t-butyl ether (MTBE)	< 0.50	0.50	ug/L	EPA 8260B	5/24/2007
Diisopropyl ether (DIPE)	< 0.50	0.50	ug/L	EPA 8260B	5/24/2007
Ethyl-t-butyl ether (ETBE)	< 0.50	0.50	ug/L	EPA 8260B	5/24/2007
Tert-amyl methyl ether (TAME)	< 0.50	0.50	ug/L	EPA 8260B	5/24/2007
Tert-Butanol	< 5.0	5.0	ug/L	EPA 8260B	5/24/2007
Methanol	< 50	50	ug/L	EPA 8260B	5/24/2007
Ethanol	< 5.0	5.0	ug/L	EPA 8260B	5/24/2007
TPH as Gasoline	< 50	50	ug/L	EPA 8260B	5/24/2007
Toluene - d8 (Surr)	103		% Recovery	EPA 8260B	5/24/2007
4-Bromofluorobenzene (Surr)	102		% Recovery	EPA 8260B	5/24/2007

Approved By:

Joel Kiff


QC Report : Method Blank Data

Project Name : **Tesoro - Livermore**

Project Number : **070517-DW-1**

Parameter	Measured Value	Method Reporting Limit	Units	Analysis Method	Date Analyzed
Benzene	< 0.50	0.50	ug/L	EPA 8260B	5/22/2007
Toluene	< 0.50	0.50	ug/L	EPA 8260B	5/22/2007
Ethylbenzene	< 0.50	0.50	ug/L	EPA 8260B	5/22/2007
Total Xylenes	< 0.50	0.50	ug/L	EPA 8260B	5/22/2007
Methyl-t-butyl ether (MTBE)	< 0.50	0.50	ug/L	EPA 8260B	5/22/2007
Diisopropyl ether (DIPE)	< 0.50	0.50	ug/L	EPA 8260B	5/22/2007
Ethyl-t-butyl ether (ETBE)	< 0.50	0.50	ug/L	EPA 8260B	5/22/2007
Tert-amyl methyl ether (TAME)	< 0.50	0.50	ug/L	EPA 8260B	5/22/2007
Tert-Butanol	< 5.0	5.0	ug/L	EPA 8260B	5/22/2007
Methanol	< 50	50	ug/L	EPA 8260B	5/22/2007
Ethanol	< 5.0	5.0	ug/L	EPA 8260B	5/22/2007
TPH as Gasoline	< 50	50	ug/L	EPA 8260B	5/22/2007
Toluene - d8 (Surr)	101		%	EPA 8260B	5/22/2007
4-Bromofluorobenzene (Surr)	98.1		%	EPA 8260B	5/22/2007
Benzene	< 0.50	0.50	ug/L	EPA 8260B	5/23/2007
Benzene	< 0.50	0.50	ug/L	EPA 8260B	5/24/2007
Toluene	< 0.50	0.50	ug/L	EPA 8260B	5/24/2007
Ethylbenzene	< 0.50	0.50	ug/L	EPA 8260B	5/24/2007
Total Xylenes	< 0.50	0.50	ug/L	EPA 8260B	5/24/2007
Methyl-t-butyl ether (MTBE)	< 0.50	0.50	ug/L	EPA 8260B	5/24/2007
Diisopropyl ether (DIPE)	< 0.50	0.50	ug/L	EPA 8260B	5/24/2007
Ethyl-t-butyl ether (ETBE)	< 0.50	0.50	ug/L	EPA 8260B	5/24/2007
Tert-amyl methyl ether (TAME)	< 0.50	0.50	ug/L	EPA 8260B	5/24/2007
Tert-Butanol	< 5.0	5.0	ug/L	EPA 8260B	5/24/2007
Methanol	< 50	50	ug/L	EPA 8260B	5/24/2007
Ethanol	< 5.0	5.0	ug/L	EPA 8260B	5/24/2007
TPH as Gasoline	< 50	50	ug/L	EPA 8260B	5/24/2007
Toluene - d8 (Surr)	102		%	EPA 8260B	5/24/2007
4-Bromofluorobenzene (Surr)	102		%	EPA 8260B	5/24/2007

Parameter	Measured Value	Method Reporting Limit	Units	Analysis Method	Date Analyzed
Benzene	< 0.50	0.50	ug/L	EPA 8260B	5/24/2007
Toluene	< 0.50	0.50	ug/L	EPA 8260B	5/24/2007
Ethylbenzene	< 0.50	0.50	ug/L	EPA 8260B	5/24/2007
Total Xylenes	< 0.50	0.50	ug/L	EPA 8260B	5/24/2007
Methyl-t-butyl ether (MTBE)	< 0.50	0.50	ug/L	EPA 8260B	5/24/2007
Diisopropyl ether (DIPE)	< 0.50	0.50	ug/L	EPA 8260B	5/24/2007
Ethyl-t-butyl ether (ETBE)	< 0.50	0.50	ug/L	EPA 8260B	5/24/2007
Tert-amyl methyl ether (TAME)	< 0.50	0.50	ug/L	EPA 8260B	5/24/2007
Tert-Butanol	< 5.0	5.0	ug/L	EPA 8260B	5/24/2007
Methanol	< 50	50	ug/L	EPA 8260B	5/24/2007
Ethanol	< 5.0	5.0	ug/L	EPA 8260B	5/24/2007
TPH as Gasoline	< 50	50	ug/L	EPA 8260B	5/24/2007
Toluene - d8 (Surr)	102		%	EPA 8260B	5/24/2007
4-Bromofluorobenzene (Surr)	103		%	EPA 8260B	5/24/2007
Benzene	< 0.50	0.50	ug/L	EPA 8260B	5/25/2007
Toluene	< 0.50	0.50	ug/L	EPA 8260B	5/25/2007
Ethylbenzene	< 0.50	0.50	ug/L	EPA 8260B	5/25/2007
Total Xylenes	< 0.50	0.50	ug/L	EPA 8260B	5/25/2007
Methyl-t-butyl ether (MTBE)	< 0.50	0.50	ug/L	EPA 8260B	5/25/2007
Diisopropyl ether (DIPE)	< 0.50	0.50	ug/L	EPA 8260B	5/25/2007
Ethyl-t-butyl ether (ETBE)	< 0.50	0.50	ug/L	EPA 8260B	5/25/2007
Tert-amyl methyl ether (TAME)	< 0.50	0.50	ug/L	EPA 8260B	5/25/2007
Tert-Butanol	< 5.0	5.0	ug/L	EPA 8260B	5/25/2007
Methanol	< 50	50	ug/L	EPA 8260B	5/25/2007
Ethanol	< 5.0	5.0	ug/L	EPA 8260B	5/25/2007
TPH as Gasoline	< 50	50	ug/L	EPA 8260B	5/25/2007
Toluene - d8 (Surr)	103		%	EPA 8260B	5/25/2007
4-Bromofluorobenzene (Surr)	103		%	EPA 8260B	5/25/2007

Approved By:  Joel Kiff

Report Number : 56585

Date : 5/29/2007


QC Report : Method Blank Data

Project Name : **Tesoro - Livermore**

Project Number : **070517-DW-1**

Parameter	Measured Value	Method Reporting Limit	Units	Analysis Method	Date Analyzed
Benzene	< 0.50	0.50	ug/L	EPA 8260B	5/25/2007
Ethylbenzene	< 0.50	0.50	ug/L	EPA 8260B	5/25/2007
Total Xylenes	< 0.50	0.50	ug/L	EPA 8260B	5/25/2007
Methyl-t-butyl ether (MTBE)	< 0.50	0.50	ug/L	EPA 8260B	5/25/2007
Tert-amyl methyl ether (TAME)	< 0.50	0.50	ug/L	EPA 8260B	5/25/2007
Tert-Butanol	< 5.0	5.0	ug/L	EPA 8260B	5/25/2007
Benzene	< 0.50	0.50	ug/L	EPA 8260B	5/24/2007
Toluene	< 0.50	0.50	ug/L	EPA 8260B	5/24/2007
Ethylbenzene	< 0.50	0.50	ug/L	EPA 8260B	5/24/2007
Total Xylenes	< 0.50	0.50	ug/L	EPA 8260B	5/24/2007
Methyl-t-butyl ether (MTBE)	< 0.50	0.50	ug/L	EPA 8260B	5/24/2007
Diisopropyl ether (DIPE)	< 0.50	0.50	ug/L	EPA 8260B	5/24/2007
Ethyl-t-butyl ether (ETBE)	< 0.50	0.50	ug/L	EPA 8260B	5/24/2007
Tert-amyl methyl ether (TAME)	< 0.50	0.50	ug/L	EPA 8260B	5/24/2007
Tert-Butanol	< 5.0	5.0	ug/L	EPA 8260B	5/24/2007
Methanol	< 50	50	ug/L	EPA 8260B	5/24/2007
Ethanol	< 5.0	5.0	ug/L	EPA 8260B	5/24/2007
TPH as Gasoline	< 50	50	ug/L	EPA 8260B	5/24/2007
Toluene - d8 (Surr)	98.8		%	EPA 8260B	5/24/2007
4-Bromofluorobenzene (Surr)	100		%	EPA 8260B	5/24/2007

Parameter	Measured Value	Method Reporting Limit	Units	Analysis Method	Date Analyzed
Toluene	< 0.50	0.50	ug/L	EPA 8260B	5/24/2007
Diisopropyl ether (DIPE)	< 0.50	0.50	ug/L	EPA 8260B	5/24/2007
Ethyl-t-butyl ether (ETBE)	< 0.50	0.50	ug/L	EPA 8260B	5/24/2007
Ethanol	< 5.0	5.0	ug/L	EPA 8260B	5/24/2007
Toluene - d8 (Surr)	102		%	EPA 8260B	5/24/2007
4-Bromofluorobenzene (Surr)	89.2		%	EPA 8260B	5/24/2007
Methyl-t-butyl ether (MTBE)	< 0.50	0.50	ug/L	EPA 8260B	5/23/2007
Methanol	< 50	50	ug/L	EPA 8260B	5/23/2007
TPH as Gasoline	< 50	50	ug/L	EPA 8260B	5/23/2007

Approved By:  _____
 Joel Kiff

QC Report : Matrix Spike/ Matrix Spike Duplicate

Project Name : **Tesoro - Livermore**Project Number : **070517-DW-1**

Parameter	Spiked Sample	Sample Value	Spike Level	Spike Dup. Level	Spiked Sample Value	Duplicate Spiked Sample Value	Units	Analysis Method	Date Analyzed	Spiked Sample Percent Recov.	Duplicate Spiked Sample Percent Recov.	Relative Percent Diff.	Spiked Sample Percent Recov. Limit	Relative Percent Diff. Limit
Benzene	56582-03	<0.50	39.9	39.8	42.1	41.9	ug/L	EPA 8260B	5/22/07	106	105	0.318	70-130	25
Toluene	56582-03	<0.50	39.9	39.8	42.7	42.2	ug/L	EPA 8260B	5/22/07	107	106	0.947	70-130	25
Tert-Butanol	56582-03	<5.0	200	199	212	204	ug/L	EPA 8260B	5/22/07	106	103	3.28	70-130	25
Methyl-t-Butyl Ether	56582-03	<0.50	39.9	39.8	35.6	40.3	ug/L	EPA 8260B	5/22/07	89.3	101	12.5	70-130	25
Benzene	56552-06	240	39.9	40.0	273	271	ug/L	EPA 8260B	5/23/07	82.6	77.3	6.64	70-130	25
Toluene	56552-06	2.4	39.9	40.0	46.3	47.2	ug/L	EPA 8260B	5/23/07	110	112	1.86	70-130	25
Tert-Butanol	56552-06	46	200	200	268	262	ug/L	EPA 8260B	5/23/07	111	108	3.09	70-130	25
Methyl-t-Butyl Ether	56552-06	<0.50	39.9	40.0	43.3	42.9	ug/L	EPA 8260B	5/23/07	108	107	1.05	70-130	25
Benzene	56604-04	<0.50	40.0	40.0	38.6	37.4	ug/L	EPA 8260B	5/24/07	96.4	93.4	3.16	70-130	25
Toluene	56604-04	<0.50	40.0	40.0	39.8	38.4	ug/L	EPA 8260B	5/24/07	99.6	96.0	3.68	70-130	25
Tert-Butanol	56604-04	<5.0	200	200	210	214	ug/L	EPA 8260B	5/24/07	105	107	1.74	70-130	25
Methyl-t-Butyl Ether	56604-04	<0.50	40.0	40.0	39.4	38.7	ug/L	EPA 8260B	5/24/07	98.6	96.8	1.78	70-130	25
Benzene	56597-02	<0.50	40.0	40.0	36.2	34.8	ug/L	EPA 8260B	5/24/07	90.6	87.1	3.93	70-130	25
Toluene	56597-02	<0.50	40.0	40.0	37.7	35.9	ug/L	EPA 8260B	5/24/07	94.2	89.7	4.89	70-130	25
Tert-Butanol	56597-02	<5.0	200	200	198	201	ug/L	EPA 8260B	5/24/07	98.8	101	1.98	70-130	25
Methyl-t-Butyl Ether	56597-02	<0.50	40.0	40.0	34.6	34.6	ug/L	EPA 8260B	5/24/07	86.4	86.5	0.0144	70-130	25
Benzene	56611-09	<0.50	40.0	40.0	37.6	36.2	ug/L	EPA 8260B	5/25/07	94.1	90.6	3.85	70-130	25
Toluene	56611-09	<0.50	40.0	40.0	38.8	37.2	ug/L	EPA 8260B	5/25/07	97.1	93.0	4.28	70-130	25

Approved By:  Joel Kiff

KIFF ANALYTICAL, LLC

2795 2nd Street, Suite 300 Davis, CA 95618 530-297-4800

QC Report : Matrix Spike/ Matrix Spike Duplicate

Project Name : **Tesoro - Livermore**Project Number : **070517-DW-1**

Parameter	Spiked Sample	Sample Value	Spike Level	Spike Dup. Level	Spiked Sample Value	Duplicate Spiked Sample Value	Units	Analysis Method	Date Analyzed	Spiked Sample Percent Recov.	Duplicate Spiked Sample Percent Recov.	Relative Percent Diff.	Spiked Sample Percent Recov. Limit	Relative Percent Diff. Limit
Tert-Butanol	56611-09	<5.0	200	200	204	205	ug/L	EPA 8260B	5/25/07	102	103	0.825	70-130	25
Methyl-t-Butyl Ether	56611-09	<0.50	40.0	40.0	38.1	37.3	ug/L	EPA 8260B	5/25/07	95.2	93.2	2.12	70-130	25
Benzene	56628-07	<0.50	40.0	40.0	38.0	37.9	ug/L	EPA 8260B	5/25/07	94.9	94.8	0.134	70-130	25
Toluene	56628-07	<0.50	40.0	40.0	39.2	39.2	ug/L	EPA 8260B	5/25/07	97.9	98.1	0.197	70-130	25
Tert-Butanol	56628-07	<5.0	200	200	209	207	ug/L	EPA 8260B	5/25/07	104	104	0.976	70-130	25
Methyl-t-Butyl Ether	56628-07	<0.50	40.0	40.0	38.2	37.7	ug/L	EPA 8260B	5/25/07	95.6	94.3	1.46	70-130	25
Benzene	56604-05	<0.50	40.0	40.0	37.3	36.0	ug/L	EPA 8260B	5/24/07	93.2	90.0	3.46	70-130	25
Toluene	56604-05	<0.50	40.0	40.0	37.7	37.3	ug/L	EPA 8260B	5/24/07	94.2	93.3	0.967	70-130	25
Tert-Butanol	56604-05	<5.0	200	200	184	182	ug/L	EPA 8260B	5/24/07	92.1	91.3	0.896	70-130	25
Methyl-t-Butyl Ether	56604-05	<0.50	40.0	40.0	41.6	41.6	ug/L	EPA 8260B	5/24/07	104	104	0.213	70-130	25
Benzene	56623-12	<0.50	40.0	40.0	41.6	41.0	ug/L	EPA 8260B	5/24/07	104	103	1.21	70-130	25
Toluene	56623-12	<0.50	40.0	40.0	42.3	41.5	ug/L	EPA 8260B	5/24/07	106	104	1.87	70-130	25
Tert-Butanol	56623-12	<5.0	200	200	228	245	ug/L	EPA 8260B	5/24/07	114	123	7.42	70-130	25
Methyl-t-Butyl Ether	56623-12	200	40.0	40.0	376	382	ug/L	EPA 8260B	5/24/07	426	441	3.37	70-130	25
Benzene	56609-01	4.6	40.0	40.0	44.3	42.5	ug/L	EPA 8260B	5/23/07	99.3	94.8	4.61	70-130	25
Toluene	56609-01	0.79	40.0	40.0	39.6	38.4	ug/L	EPA 8260B	5/23/07	97.1	94.0	3.16	70-130	25
Tert-Butanol	56609-01	66	200	200	264	264	ug/L	EPA 8260B	5/23/07	99.4	99.4	0.0374	70-130	25
Methyl-t-Butyl Ether	56609-01	38	40.0	40.0	66.9	65.9	ug/L	EPA 8260B	5/23/07	73.1	70.5	3.65	70-130	25

Approved By:  Joel Kiff

KIFF ANALYTICAL, LLC

2795 2nd Street, Suite 300 Davis, CA 95618 530-297-4800

QC Report : Laboratory Control Sample (LCS)

Project Name : **Tesoro - Livermore**

Project Number : **070517-DW-1**

Parameter	Spike Level	Units	Analysis Method	Date Analyzed	LCS Percent Recov.	LCS Percent Recov. Limit
Benzene	40.0	ug/L	EPA 8260B	5/22/07	105	70-130
Toluene	40.0	ug/L	EPA 8260B	5/22/07	105	70-130
Tert-Butanol	200	ug/L	EPA 8260B	5/22/07	102	70-130
Methyl-t-Butyl Ether	40.0	ug/L	EPA 8260B	5/22/07	93.1	70-130
Benzene	40.0	ug/L	EPA 8260B	5/23/07	110	70-130
Toluene	40.0	ug/L	EPA 8260B	5/23/07	113	70-130
Tert-Butanol	200	ug/L	EPA 8260B	5/23/07	113	70-130
Methyl-t-Butyl Ether	40.0	ug/L	EPA 8260B	5/23/07	99.0	70-130
Benzene	40.0	ug/L	EPA 8260B	5/24/07	95.9	70-130
Toluene	40.0	ug/L	EPA 8260B	5/24/07	100	70-130
Tert-Butanol	200	ug/L	EPA 8260B	5/24/07	105	70-130
Methyl-t-Butyl Ether	40.0	ug/L	EPA 8260B	5/24/07	92.7	70-130
Benzene	40.0	ug/L	EPA 8260B	5/24/07	94.5	70-130
Toluene	40.0	ug/L	EPA 8260B	5/24/07	98.6	70-130
Tert-Butanol	200	ug/L	EPA 8260B	5/24/07	103	70-130
Methyl-t-Butyl Ether	40.0	ug/L	EPA 8260B	5/24/07	91.4	70-130
Benzene	40.0	ug/L	EPA 8260B	5/25/07	96.2	70-130

KIFF ANALYTICAL, LLC

2795 2nd Street, Suite 300 Davis, CA 95618 530-297-4800

Approved By:



 Joel Kiff

QC Report : Laboratory Control Sample (LCS)Project Name : **Tesoro - Livermore**Project Number : **070517-DW-1**

Parameter	Spike Level	Units	Analysis Method	Date Analyzed	LCS Percent Recov.	LCS Percent Recov. Limit
Toluene	40.0	ug/L	EPA 8260B	5/25/07	101	70-130
Tert-Butanol	200	ug/L	EPA 8260B	5/25/07	105	70-130
Methyl-t-Butyl Ether	40.0	ug/L	EPA 8260B	5/25/07	94.3	70-130
Benzene	40.0	ug/L	EPA 8260B	5/25/07	96.1	70-130
Toluene	40.0	ug/L	EPA 8260B	5/25/07	101	70-130
Tert-Butanol	200	ug/L	EPA 8260B	5/25/07	105	70-130
Methyl-t-Butyl Ether	40.0	ug/L	EPA 8260B	5/25/07	93.9	70-130
Benzene	40.0	ug/L	EPA 8260B	5/24/07	94.8	70-130
Toluene	40.0	ug/L	EPA 8260B	5/24/07	99.2	70-130
Tert-Butanol	200	ug/L	EPA 8260B	5/24/07	96.6	70-130
Methyl-t-Butyl Ether	40.0	ug/L	EPA 8260B	5/24/07	103	70-130
Benzene	40.0	ug/L	EPA 8260B	5/24/07	101	70-130
Toluene	40.0	ug/L	EPA 8260B	5/24/07	104	70-130
Tert-Butanol	200	ug/L	EPA 8260B	5/24/07	100	70-130
Methyl-t-Butyl Ether	40.0	ug/L	EPA 8260B	5/24/07	94.9	70-130
Benzene	40.0	ug/L	EPA 8260B	5/23/07	95.3	70-130
Toluene	40.0	ug/L	EPA 8260B	5/23/07	96.2	70-130
Tert-Butanol	200	ug/L	EPA 8260B	5/23/07	94.5	70-130

KIFF ANALYTICAL, LLC

Approved By:



 Joel Kiff

Report Number : 56585

Date : 5/29/2007

QC Report : Laboratory Control Sample (LCS)

Project Name : **Tesoro - Livermore**

Project Number : **070517-DW-1**

Parameter	Spike Level	Units	Analysis Method	Date Analyzed	LCS Percent Recov.	LCS Percent Recov. Limit
Methyl-t-Butyl Ether	40.0	ug/L	EPA 8260B	5/23/07	85.2	70-130

KIFF ANALYTICAL, LLC

2795 2nd Street, Suite 300 Davis, CA 95618 530-297-4800

Approved By:



Joel Kiff

56585 1 of 2

BLAINE

TECH SERVICES, INC.

1680 ROGERS AVENUE
 SAN JOSE, CALIFORNIA 95112-1105
 FAX (408) 573-7771
 PHONE (408) 573-0555

CONDUCT ANALYSIS TO DETECT

LAB

KIFF

DHS #

ALL ANALYSES MUST MEET SPECIFICATIONS AND DETECTION LIMITS SET BY CALIFORNIA DHS AND

- EPA
- LIA
- OTHER
- RWQCB REGION

SPECIAL INSTRUCTIONS

Invoice and Report to : Arctos Environmental, Inc.

Attn: Mike Purchase

1332 Peralta Ave. Berkeley, CA 94702

Ph. 510-525-2180

mpurchase@arctosenv.com

CHAIN OF CUSTODY
 BTS # 070517-0w-1

CLIENT
 Arctos Environmental, Inc.

SITE
 Tesoro - Livermore

1619 1st Street

Livermore, CA

C = COMPOSITE ALL CONTAINERS

SAMPLE I.D.	DATE	TIME	MATRIX		CONTAINERS		C = COMPOSITE ALL CONTAINERS	TPH-G + BTEX + MTBE (8260)	(7) Oxygenates (8260)	Lead Scavengers	Ferrous Iron (24 hr. Hold time)	Nitrate, Sulfate, Phosphorus	Major anions (Chloride, Nitrite, Sulfide)	Total Alkalinity (SM2320B)	COD (410.4)	ADD'L INFORMATION	STATUS	CONDITION	LAB SAMPLE #	
			S= SOIL W=H ₂ O		TOTAL	VOA/HCL														
MW-1	5-17	1135	W		3	HCL was		X	X											01
MW-2		1443						X	X											02
MW-3		1307						X	X											03
MW-4		1245						X	X											04
MW-5		1344						X	X											05
MW-6		1425						X	X											06
MW-7		1050						X	X											07
MW-8		1024						X	X											08
MW-9		1406						X	X											09
MW-10		1110						X	X											10

SAMPLING COMPLETED DATE 5-17-07 TIME 1530 SAMPLING PERFORMED BY Dave Walter RESULTS NEEDED NO LATER THAN Standard TAT

RELEASED BY David C. Stalt DATE 5-17-07 TIME 1630 RECEIVED BY David C. Stalt (Sample Collection) DATE 5-17-07 TIME 1630

RELEASED BY [Signature] DATE 5/18/07 TIME 1410 RECEIVED BY [Signature] DATE 5/18/07 TIME 1415

RELEASED BY [Signature] DATE 5/18/07 TIME 1415 RECEIVED BY [Signature] DATE 5/18/07 TIME 1415

SHIPPED VIA [Signature] DATE SENT 5/18/07 TIME SENT 1415 COOLER # [Signature]

SAMPLE RECEIPT
 Temp °C 0.6 Therm. ID# ERS
 Initial CSY Date 051807
 Time 1327 Coolant present (Yes) No

BLAINE

TECH SERVICES, INC.

1680 ROGERS AVENUE
 SAN JOSE, CALIFORNIA 95112-1105
 FAX (408) 573-7771
 PHONE (408) 573-0555

56585

2 of 2

CONDUCT ANALYSIS TO DETECT

LAB

KIFF

DHS #

ALL ANALYSES MUST MEET SPECIFICATIONS AND DETECTION LIMITS SET BY CALIFORNIA DHS AND

EPA RWQCB REGION
 LIA
 OTHER

CHAIN OF CUSTODY

BTS # **070517-06-1**

CLIENT **Arctos Environmental, Inc.**

SITE **Tesoro - Livermore**

1619 1st Street

Livermore, CA

C = COMPOSITE ALL CONTAINERS

SAMPLE I.D.	DATE	TIME	MATRIX S = SOIL W = H ₂ O	CONTAINERS		C = COMPOSITE ALL CONTAINERS	TPH-G + BTEX + MTBE (8260)	(7) Oxygenates (8260)	Lead Scavengers	Ferrous Iron (24 hr. Hold time)	Nitrate, Sulfate, Phosphorous	Major anions (Chloride, Nitrite, Sulfide)	Total Alkalinity (SM2320B)	COD (410.4)	ADD'L INFORMATION	STATUS	CONDITION	LAB SAMPLE #	
				TOTAL	VOA/HCL														
TP-1	5-17	1504	W	3	Hel Voos		X	X											11
TP-2	↓	1525	↓	↓	↓		X	X											12
VW-2	↓	0945	↓	↓	↓		X	X											13
VW-3	↓	0905	↓	↓	↓		X	X											14

SPECIAL INSTRUCTIONS

Invoice and Report to : Arctos Environmental, Inc.
 Attn: Mike Purchase

1332 Peralta Ave. Berkeley, CA 94702
 Ph. 510-525-2180
 mpurchase@arctosenv.com

SAMPLING COMPLETED **5-17-07 1533** SAMPLING PERFORMED BY **Dave Walker** RESULTS NEEDED NO LATER THAN **Standard TAT**

RELEASED BY **David C. Stalt** DATE **5-17-07** TIME **1630** RECEIVED BY **David C. Stalt (Sample Custodian)** DATE **5-17-07** TIME **1630**

RELEASED BY **[Signature]** DATE **5/18/07** TIME **1410** RECEIVED BY **[Signature]** DATE **5/18/07** TIME **1415**

SHIPPED VIA _____ DATE SENT _____ TIME SENT _____ COOLER # **[Signature]** **Kiff Analytical**