



**WESTERN  
GEO-ENGINEERS**  
CALIF. CONTRACTOR #513857  
REGISTERED GEOLOGISTS

1386 EAST BEAMER STREET  
WOODLAND CA 95776-6003  
(916) 668-5300,  
FAX (916) 662-0273  
Wege@mother.com

---

November 3, 1997

**SITE: DESERT #793  
4035 PARK BLVD.  
OAKLAND, CALIFORNIA**

**FINAL COPY THIRD QUARTER 1997 GROUNDWATER SAMPLING REPORT:**

**Mr. John Rutherford  
DESERT PETROLEUM  
P.O. Box 1601  
Oxnard, CA 93031**

**1 Report**

**Mr. Tom Peacock  
ALAMEDA COUNTY ENVIRONMENTAL HEALTH  
1131 Harbor Bay Parkway, Suite 250  
Alameda, CA 94502-6577**

**1 Report**



CALIF CONTRACTOR # 513857 A CORPORATION  
REGISTERED GEOLOGISTS

1386 EAST BEAMER STREET  
WOODLAND, CA 95776-6003  
FAX (916) 662-0273  
(916) 668-5300

October 15, 1997

Mr. John Rutherford  
Desert Petroleum  
P.O. Box 1601  
Oxnard, California 93032  
(805) 644-6784 FAX (805) 654-0720

Dear Mr. Rutherford:

The following report documents the Third Quarter 1997 collection and certified laboratory analysis of groundwater samples from five monitoring wells and three water recovery wells associated with former Desert Petroleum Station #793.

## 1.0 SITE LOCATION AND DESCRIPTION

Former Desert Petroleum #793 is a non-active service station, located on the northwest corner of the intersection of Park Blvd. and Hampel Street at [REDACTED] (Figure 1). The site is located in projected section 32; T1S; R3W; MDB&M at an approximate elevation of 210 feet above mean sea level (Figure 2).

## 2.0 LOCAL GEOLOGY

### 2.1 Geomorphology

The site is located on the western slope of the Berkeley Hills. The Berkeley Hills are a northwest-southeast trending range within the Coastal Range Province of California. Erosion of the Coastal Ranges has filled the valleys within and bordering the Coastal Range with sequences of gravels, silts, sands, and clays.

## ***2.2 Stratigraphy***

The native soil from surface to 13 feet below ground surface (BGS) consists of dark brown silty clay. The dark brown clay is underlain by light brown stiff clay that includes rounded metavolcanic gravel. This clay extends to approximately 23 feet BGS at the northwest corner of the site. A fine to medium sand, clayey sand, and silty sand underlies the gravel and clay.

## **3.0 COLLECTION AND ANALYSIS OF GROUNDWATER SAMPLES, 9/2/97**

WEGE and LTT (Lawrence Tank Testing) personnel conducted a quarterly groundwater monitoring round at the site on September 2, 1997. Water samples were collected from monitor wells MW1, RS-2, RS-5, and RS-6 located on-site and RS-7 located in the center of Brighton Avenue to the northeast of the site (Figure 3). Water samples were also collected from the three on-site water recovery wells (R1-R3). See Appendix A for QA/QC, details, methods, procedures, abbreviations, and acronyms used in sampling and analysis.

### ***3.1 Depth to Water Measurements***

Depth to water was measured at all monitor wells and the three on-site water recovery wells (R1-R3). The depth to water measurements were made using a product/water interface probe. Measurements were made from the surveyed elevation at the top of casing at each well. Table 1 shows the elevation of groundwater with respect to mean sea level for all monitor wells on September 2, 1997.

### ***3.2 Purging of Monitor Wells***

Lawrence Tank Testing using a truck mounted vacuum lift pump and one-inch diameter PVC tubing purged the monitor wells of three volumes of water. The specific volume of water removed from each well is recorded on the well sampling data sheets (Appendix B).

### ***3.3 Collection and Certified Analysis of Groundwater Samples***

After purging, the wells were allowed to recover to at least 80% of their original well volumes. A groundwater sample was then collected from each well with a disposable polyethylene bailer and decanted, with no headspace, into two 40 ml VOA vials containing 0.5 ml HCL acid as a preservative. North State Environmental Laboratories analyzed all water samples for concentrations of TPH-G, BTEX, and MTBE using EPA methods 5030/8015M/8020 (Appendix C). The presence of MTBE was verified with EPA Method 8260.

### *3.4 Disposition of Waste Water*

The wastewater generated from the purging of the monitor wells during sampling was contained on-site in labeled 55 gallon DOT approved drums. The drummed wastewater will be removed from the site and transported to a recycling facility by Evergreen Environmental Services.

## **4.0 RESULTS OF QUARTERLY GROUNDWATER MONITORING**

### *4.1 Groundwater Gradient and Flow Direction*

Figure 4 shows the groundwater elevation gradients and flow direction that were derived from the depth to water measurements from on-site monitor wells on September 2, 1997. The groundwater elevation has decreased by an average of 1.35 feet in the monitor wells since the previous quarterly monitoring round on May 28, 1997. (Table 1).

The current flow direction is to north and northwest. The hydraulic gradient averages 0.18 feet/linear foot downgradient from the overexcavated area at the site (Figure 4). The current flow direction and hydraulic gradient is consistent with previous gradient determinations by WEGE.

### *4.2 Results of Certified Analysis of Groundwater Samples*

The results of the certified analyses of groundwater samples collected on September 2, 1997 are shown in Table 1 and Figure 5. Copies of the laboratory reports are included as Appendix C of this report.

TPH-G concentrations in water samples from the five monitor wells and three recovery wells ranged from a maximum of 38,000 ug/l at monitor well RS-5 to less than laboratory detection limits (50 ug/l) in monitor wells MW1 and RS-2 and water recovery well R-3. Benzene concentrations ranged from a maximum of 12,000 ug/l in water recovery well R-2 to less than laboratory detection limits (0.5 ug/l) in monitor well RS-2.

MTBE concentrations ranged from a maximum of 47 ug/l to less than laboratory detection limits in monitor wells MW1, RS-2, RS-5, RS-6, and RS-7, and recovery well R-3. Figure 5 shows the areal distribution of TPH-G, BTEX, and MTBE in groundwater in ug/l as determined from groundwater samples collected from the monitor wells on September 2, 1997.

The decrease in overall water elevation since the previous monitoring round was accompanied by decreases in contaminant concentrations at all monitor wells.

## 5.0 LIMITATIONS

This report is based upon the following:

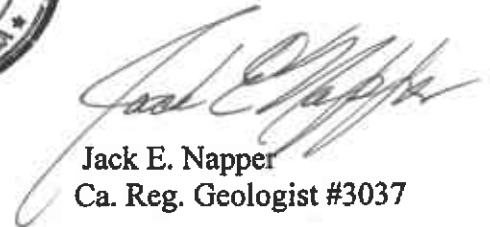
- A. The observations of field personnel.
- B. The results of laboratory analyses performed by a state certified laboratory.
- C. Referenced documents.
- D. Our understanding of the regulations of the State of California, Alameda County and the City of Oakland.
- E. Changes in groundwater conditions can occur due to variations in rainfall, temperature, local and regional water use, and local construction practices.
- F. In addition, variations in the soil and groundwater conditions could exist beyond the points explored in this investigation.

State Certified Laboratory analytical results are included in this report. This laboratory follows EPA and State of California approved procedures; however, WEGE is not responsible for errors in these laboratory results. Western Geo-Engineers is a corporation under California Registered Geologist #3037 and/or Contractors License #513857. The services performed by Western Geo-Engineers have been conducted in a manner consistent with the level of care and skill ordinarily exercised by members of our profession currently practicing under similar conditions in the State of California and the Oakland area. Our work and/or supervision of remediation and/or abatement operations, active or preliminary, at this site is in no way meant to imply that we are owners or operators of this site. Known or suspected contamination of soil and/or groundwater must be reported to the appropriate agencies in a timely manner. No other warranty, expressed or implied, is made.

Sincerely,



David Threlfall  
Geologist



Jack E. Napper  
Ca. Reg. Geologist #3037

cc: Mr. Tom Peacock, Alameda County Health (510) 567-6774

TABLE 1  
GROUNDWATER ELEVATIONS AND CERTIFIED ANALYTICAL LABORATORY RESULTS FROM WATER SAMPLES  
DESERT PETROLEUM, INC. SITE #793  
4035 PARK BOULEVARD, OAKLAND, CALIFORNIA

ID#	(All concentrations in parts per billion (ug/L, ppb) (AMSL = Above mean sea level))									
	DATE SAMPLED	WELL CASING ELEVATION (FEET AMSL)	DEPTH TO GROUND WATER (FEET)	GROUND WATER ELEVATION (FEET AMSL)	TPH-G (UG/L)	BENZENE (UG/L)	TOLUENE (UG/L)	ETHYL-BENZENE (UG/L)	XYLENES (UG/L)	MTBE (UG/L)
RS-1	12/14/89	240	24.25	215.75	19000	2600	2700	200	1200	
RS-1	12/90				15000	3500	330	170	760	
RS-1	2/91				6900	910	200	39	540	
RS-1	6/91				1600	56	180,000	12	26	
RS-1	9/91				4100	730	7.6	5.1	24	
RS-1	12/91				8300	950	160	71	190	
RS-1	11/09/92	100.18	17.05	83.13	1700	730	9.6	16	14	
RS-1	04/07/94	100.18	13	87.18	860	84	12	16	110	
RS-1	06/19/94	228.15	13.37	214.78	1400	150	12	52	87	
RS-1	09/17/94	228.15	16.33	211.82	310	30	1.8	2.8	3.9	
RS-1	03/12/95	228.15	4.66	223.49	ND	ND	ND	ND	ND	
		DESTROYED BY OVER-EXCAVATION OF UST-DISPENSER AREAS ( 8/14/95								
		REPLACED WITH MW-1 9/5/95.								
MW-1	10/04/95	232.57	12.38	220.19	ND	ND	ND	ND	ND	
MW-1	12/21/95	232.57	13.40	219.17	< 50	< 0.5	< 0.5	< 0.5	< 0.5	< 0.5
MW-1	03/27/96	232.57	5.53	227.04	< 50	< 0.5	< 0.5	< 0.5	< 2	< 50
MW-1	06/11/96	232.57	9.02	223.55	< 50	< 0.5	< 0.5	< 0.5	< 2	< 50
MW-1	09/04/96	232.57	11.84	220.73	< 50	< 0.5	< 0.5	< 0.5	< 2	< 5
MW-1	12/11/96	232.57	12.98	219.59	< 50	< 0.5	0.9	< 0.5	< 1	< 0.5
MW-1	2/21/97	232.57	9.50	223.07	< 50	< 0.5	0.9	< 0.5	< 1	< 0.5*
MW-1	5/28/97	232.57	11.18	221.39	< 50	3	3	< 0.5	< 1	< 0.5*
MW-1	9/2/97	232.57	13.00	219.57	< 50	5	< 0.5	< 0.5	< 1	< 0.5*

5

TABLE 1  
GROUNDWATER ELEVATIONS AND CERTIFIED ANALYTICAL LABORATORY RESULTS FROM WATER SAMPLES  
DESERT PETROLEUM, INC. SITE #793  
4035 PARK BOULEVARD, OAKLAND, CALIFORNIA

ID#	(All concentrations in parts per billion (ug/l, ppb)) (AMSL = Above mean sea level)										
	DATE SAMPLED	WELL CASING ELEVATION (FEET AMSL)	DEPTH TO GROUND WATER (FEET)	GROUND WATER ELEVATION (FEET AMSL)	TPH-G (UG/L)	BENZENE (UG/L)	TOLUENE (UG/L)	ETHYL-BENZENE (UG/L)	XYLENES (UG/L)	MTBE (UG/L)	
RS-2	06/19/94	227.19	10.89	216.3	140	9.2	34	4.3	24.0		
RS-2	03/12/95	227.19	5.26	221.93	ND	ND	ND	ND	ND		
RS-2	10/04/95	230.43	15.05	215.38	ND	ND	ND	ND	ND		
RS-2	12/21/95	230.43	9.95	220.48	< 50	< 0.5	< 0.5	< 0.5	< 0.5	< 0.5	
RS-2	03/27/96	230.43	6.28	224.15	< 50	< 0.5	< 0.5	< 0.5	< 2	< 50	
RS-2	06/11/96	230.43	8.00	222.43	< 50	1.2	2.8	< 0.5	< 2	< 50	
RS-2	09/04/96	230.43	9.89	220.54	< 50	< 0.5	< 0.5	< 0.5	< 2	< 5	
RS-2	12/11/96	230.43	8.38	222.05	< 50	< 0.5	< 0.5	< 0.5	< 1	6	
RS-2	2/21/97	230.43	6.96	223.47	< 50	< 0.5	< 0.5	< 0.5	< 1	< 0.5*	
RS-2	5/28/97	230.43	10.02	220.41	< 50	3	3	< 0.5	< 1	< 0.5*	
RS-2	9/2/97	230.43	11.46	218.97	< 50	< 0.5	< 0.5	< 0.5	< 1	< 0.5*	
RS-5	12/14/89	241.26	25.97	215.29	57000	3100	4300	670	3400		
RS-5	2/91				FLOATING PRODUCT						
RS-5	6/91				FLOATING PRODUCT						
RS-5	9/91				FLOATING PRODUCT						
RS-5	12/91				FLOATING PRODUCT						
RS-5	11/09/92	98.99	20.73	78.26	50000	650	4800	1100	15000		
RS-5	04/07/94	98.99	18.16	80.83	27000	5000	8700	550	2800		
RS-5	06/19/94	227.65	18.11	209.54	20000	2100	5300	470	2500		
RS-5	09/17/94	227.65	19.63	208.02	9300	230	340	110	700		
RS-5	03/12/95	227.65	14.54	213.11	93000	6400	2000	19000	10000		
RS-5	10/04/95	230.64	17.53	213.11	16000	420	2100	320	1800		
RS-5	12/21/95	230.64	17.47	213.17	48000	3500	9200	840	4800	56	
RS-5	03/27/96	230.64	13.51	217.13	68000	4900	18000	1700	11000	< 3000	
RS-5	06/11/96	230.64	14.25	216.39	66000	6300	20000	2100	12000	< 3000	
RS-5	09/04/96	230.64	16.50	214.14	31000	2100	11000	1100	6800	400	
RS-5	12/11/96	230.64	15.88	214.76	85000	7000	21000	1800	8900	570	
RS-5	2/21/97	230.64	13.76	216.88	100000	5000	22000	1700	7300	< 0.5*	
RS-5	5/28/97	230.64	15.77	214.87	52000	4500	19000	2100	10000	< 0.5*	
RS-5	9/2/97	230.64	17.47	213.17	38000	2200	9400	1300	5800	< 0.5*	

TABLE 1  
GROUNDWATER ELEVATIONS AND CERTIFIED ANALYTICAL LABORATORY RESULTS FROM WATER SAMPLES  
DESERT PETROLEUM, INC. SITE #793  
4035 PARK BOULEVARD, OAKLAND, CALIFORNIA

ID#	(All concentrations in parts per billion [ug/L, ppb]) (AMSL = Above mean sea level)									
	DATE SAMPLED	WELL CASING ELEVATION (FEET AMSL)	DEPTH TO GROUND WATER (FEET)	GROUND WATER ELEVATION (FEET AMSL)	TPH-G (UG/L)	BENZENE (UG/L)	TOLUENE (UG/L)	ETHYL-BENZENE (UG/L)	XYLENES (UG/L)	MTBE (UG/L)
RS-6	12/14/89	240.23	22.52	217.71	11000	1400	1700	160	860	
RS-6	2/91				FLOATING PRODUCT					
RS-6	6/91				95000	4200	4200	650	3700	
RS-6	9/91				FLOATING PRODUCT					
RS-6	12/91				64000	3700	2300	730	4100	
RS-6	11/09/92	99.27	19.43	79.84	19000	1600	710	500	1600	
RS-6	04/07/94	99.27	14.42	84.85	16000	1200	1300	290	1100	
RS-6	06/19/94	227.22	14.45	212.77	23000	1300	2200	590	2200	
RS-6	09/17/94	227.22	19.52	207.7	24000	630	790	250	1100	
RS-6	03/12/95	227.22	8.90	218.32	3200	450	13	82	230	
RS-6	10/04/95	230.22	17.78	212.44	3700	170	250	38	290	
RS-6	12/21/95	230.22	14.98	215.24	3100	120	30	16	150	58
RS-6	03/27/96	230.22	10.00	220.22	6900	180	440	79	360	< 300
RS-6	06/11/96	230.22	12.00	218.22	7400	220	150	30	100	<1000
RS-6	09/04/96	230.22	15.00	215.22	1400	68	2.6	7.7	9.2	14
RS-6	12/11/96	230.22	12.36	217.86	1800	39	16	10	18	< 0.5
RS-6	2/21/97	230.22	10.00	220.22	2100	71	85	25	40	< 0.5*
RS-6	5/28/97	230.22	13.56	216.66	1700	34	12	11	16	< 0.5*
RS-6	9/2/97	230.22	16.35	213.87	940	34	71	9	55	< 0.5*
RS-7	7/90				5600000	24000	210000	50000	740000	
RS-7	2/91				FLOATING PRODUCT					
RS-7	6/91				FLOATING PRODUCT					
RS-7	9/91				FLOATING PRODUCT					
RS-7	12/91				270000	11000	22000	2000	13000	
RS-7	11/09/92	67.88	4.62	63.26	81000	12000	16000	1900	13000	
RS-7	04/07/94	67.88	4.03	63.85	74000	16000	16000	1400	8500	
RS-7	06/19/94	195.92	4.07	191.85	83000	22000	19000	1500	9500	
RS-7	09/17/94	195.92	4.05	191.87	270000	13000	15000	2100	1100	
RS-7	03/12/95	195.92	3.72	192.2	35000	5100	560	6300	3600	
RS-7	10/04/95	199.35	4.03	195.32	96000	14000	14000	1300	7000	
RS-7	12/21/95	199.35	3.95	195.4	70000	9300	12000	860	5600	210
RS-7	03/27/96	199.35	3.80	195.55	64000	8900	14000	1100	8300	< 3000
RS-7	06/11/96	199.35	3.79	195.56	65000	12000	17000	1600	9700	<5000
RS-7	09/04/96	199.35	3.99	195.36	20000	4900	2100	670	4400	100
RS-7	12/11/96	199.35	3.78	195.57	17000	4400	7500	570	4600	180
RS-7	2/21/97	199.35	3.82	195.53	93000	31000	47000	3800	23000	<0.5*
RS-7	5/28/97	199.35	3.82	195.53	52000	12000	8200	2000	11000	<0.5*
RS-7	9/2/97	199.35	3.96	195.39	28000	6100	2800	950	3800	<50



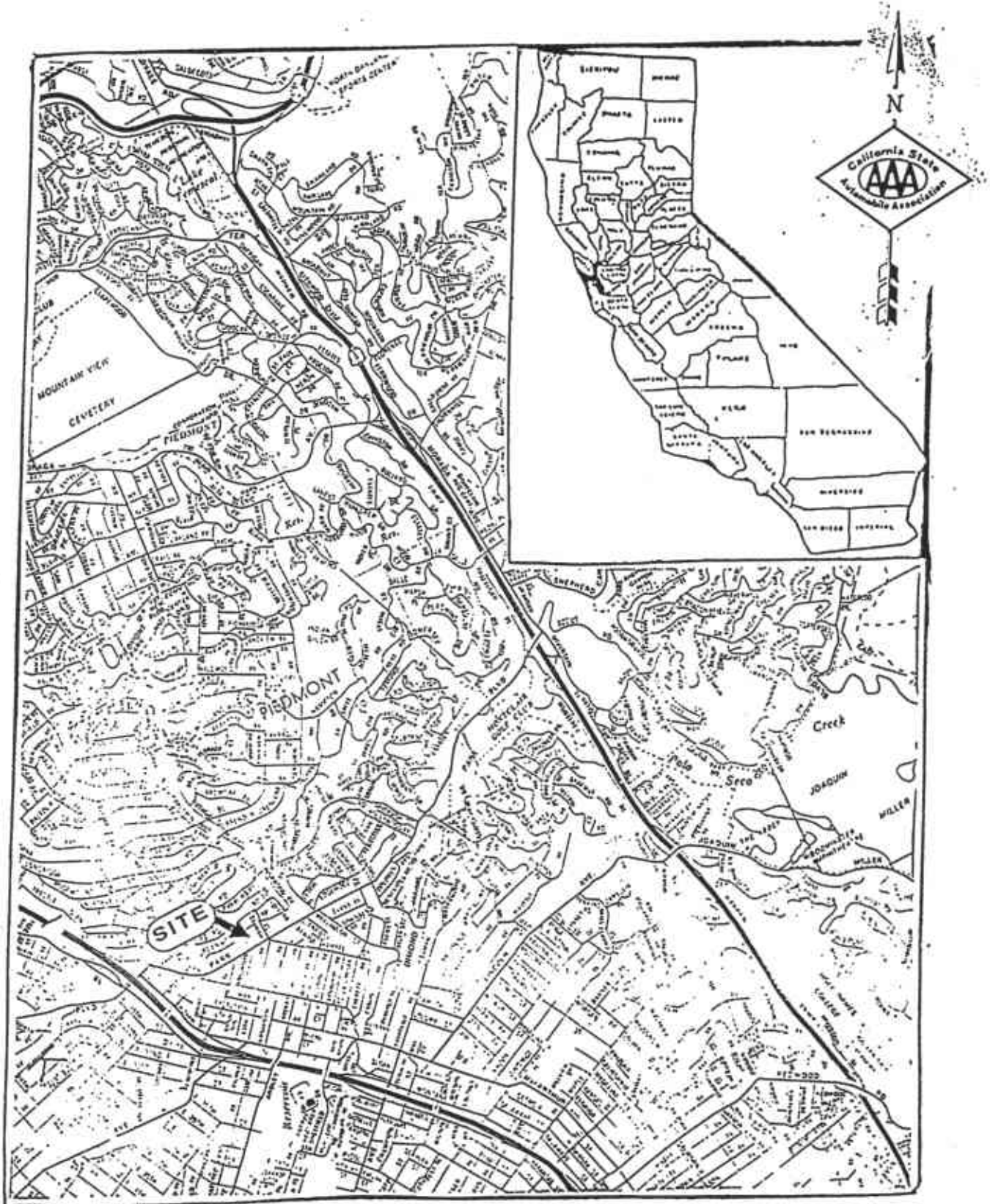
TABLE 1  
GROUNDWATER ELEVATIONS AND CERTIFIED ANALYTICAL LABAORATAORY RESULTS FROM WATER SAMPLES  
DESERT PETROLEUM, INC. SITE #793  
4035 PARK BOULEVARD, OAKLAND, CALIFORNIA

ID#	(All concentrations in parts per billion [ug/L, ppb]) (AMSL = Above mean sea level)									
	DATE SAMPLED	WELL CASING ELEVATION (FEET AMSL)	DEPTH TO GROUND WATER (FEET)	GROUND WATER ELEVATION (FEET AMSL)	TPH-G (UG/L)	BENZENE (UG/L)	TOLUENE (UG/L)	ETHYL-BENZENE (UG/L)	KYLENES (UG/L)	MTBE (UG/L)
RECOVERY 1	09/04/96	230.73	15.00	215.73	1800	1100	3	29	< 10	< 30
RECOVERY 1	12/11/96	230.73	10.30	220.43	<50	<0.5	< 0.5	< 0.5	< 1	4
RECOVERY 1	2/21/97	230.73	11.88	218.85	2500	670	9	3	13	<0.5*
RECOVERY 1	5/28/97	230.73	14.03	216.7	24000	4300	36	2000	370	<0.5*
RECOVERY 1	9/2/97	230.73	14.98	215.75	4400	320	6	340	72	20
RECOVERY 2	09/04/96	230.68	13.44	217.24	14000	7600	<10	170	190	<100
RECOVERY 2	12/11/96	230.68	12.42	218.26	488	300	1	< 0.5	30	16
RECOVERY 2	2/21/97	230.68	10.50	220.18	5700	2100	5	2	10	3*
RECOVERY 2	5/28/97	230.68	13.10	217.58	36000	14000	63	260	220	<0.5*
RECOVERY 2	9/2/97	230.68	14.16	216.52	30000	12000	330	1000	790	47
RECOVERY 3	09/04/96	230.32	9.90	220.42	<50	<0.5	<0.5	<0.5	<1	<5
RECOVERY 3	12/11/96	230.32	8.18	222.14	<50	<0.5	<0.5	<0.5	<1	5
RECOVERY 3	2/21/97	230.32	6.76	223.56	340	35	59	8	54	<0.5*
RECOVERY 3	5/28/97	230.32	9.98	220.34	<50	<0.5	<0.5	<0.5	<1	<0.5*
RECOVERY 3	9/2/97	230.32	10.86	219.46	<50	4	<0.5	<0.5	<1	<0.5*

ND BELOW LABORATORY DETECTION LIMITS  
TPH-G TOTAL PETROLEUM HYDROCARBONS AS GASOLINE  
\* MTBE results confirmed by EPA Method 8260 (GC/MS)

**-WEGE-**

**DESERT STATION #793  
4035 Park Blvd.  
Oakland, California**



**FIGURE 1**

**Location (AAA Map)**



WESTERN  
GEO-ENGINEERS

DESERT STATION #793  
4035 Park Blvd.  
Oakland, California

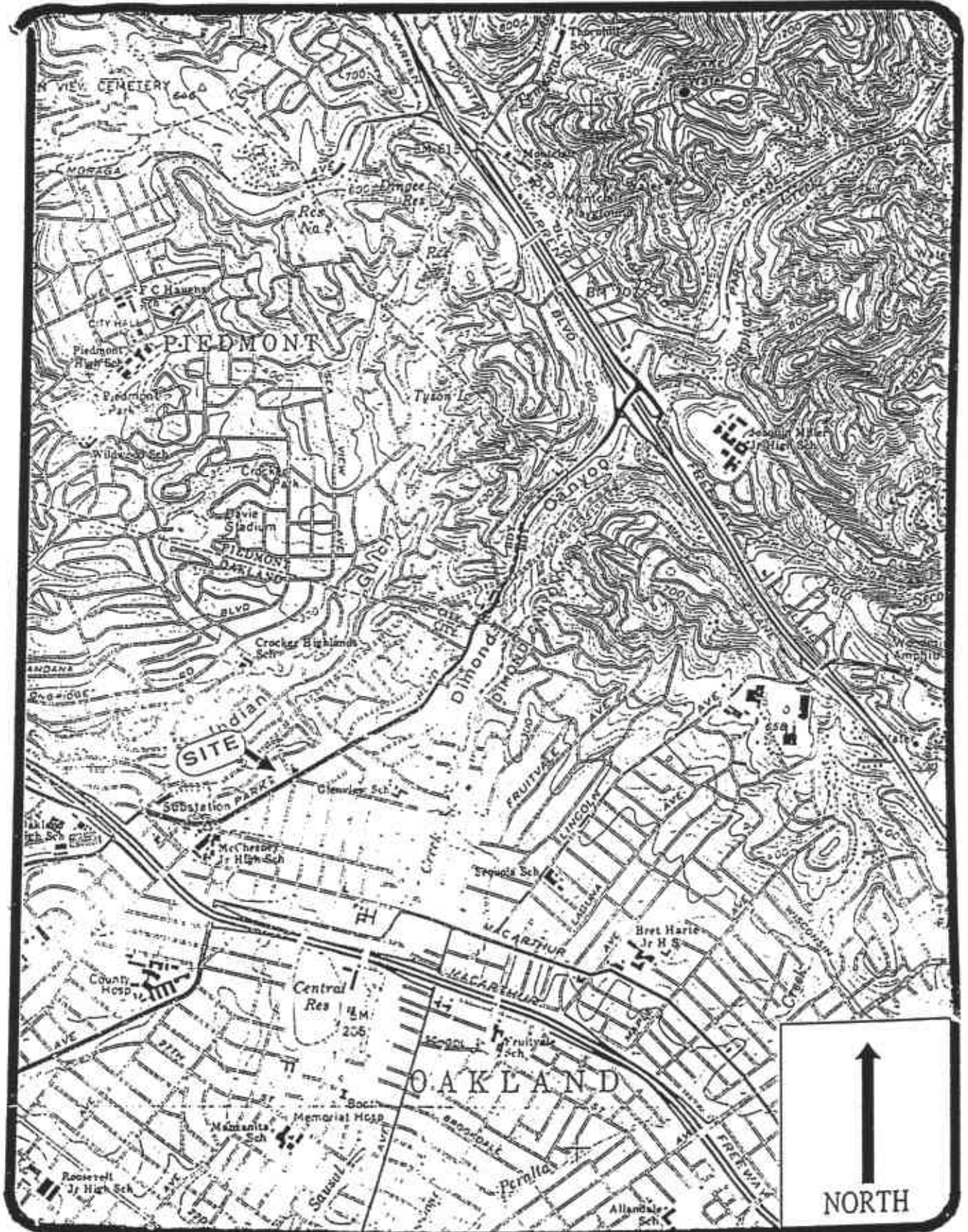


FIGURE 2,, USGS TOPOGRAPHIC MAP

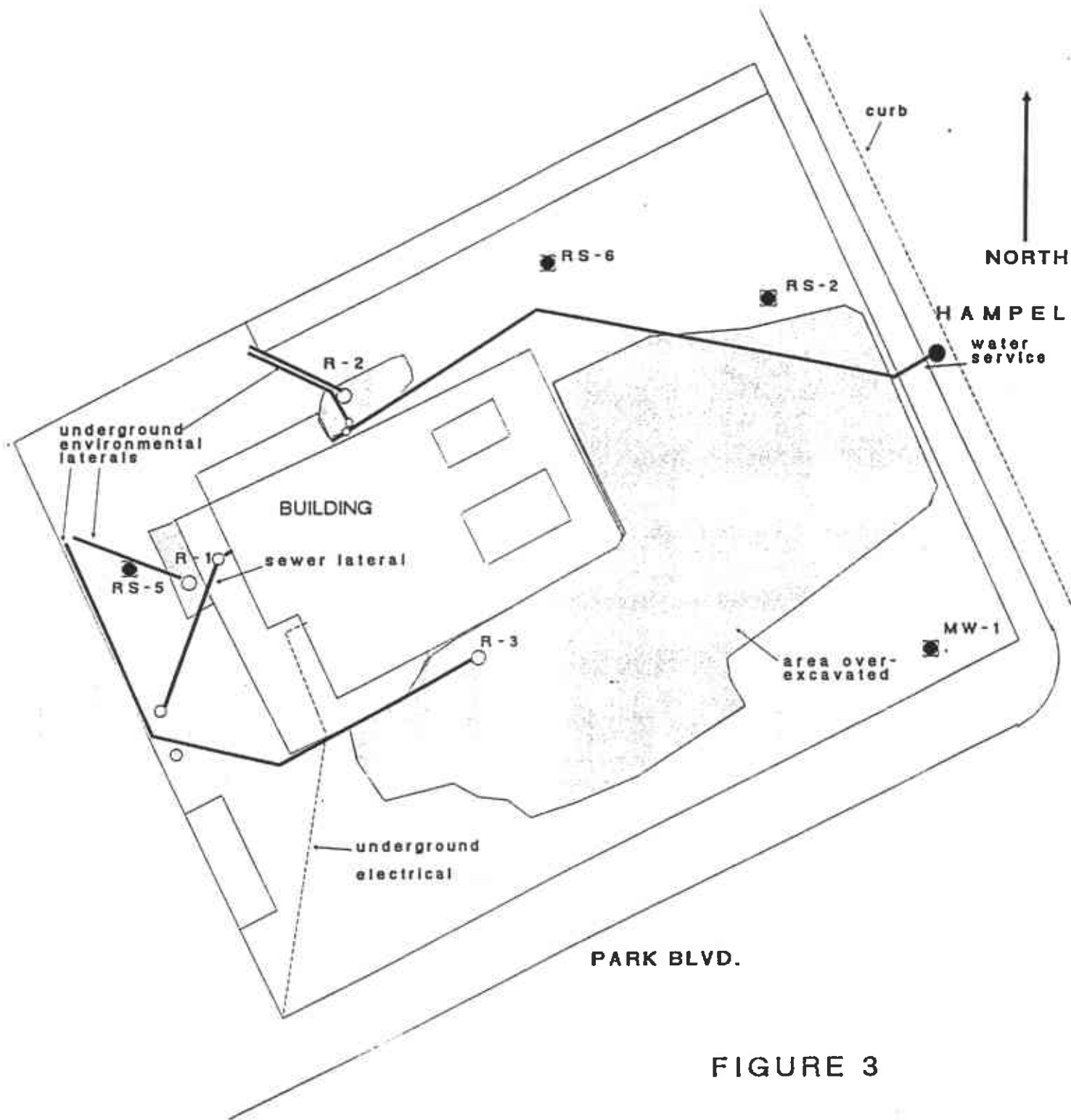
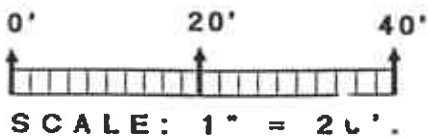
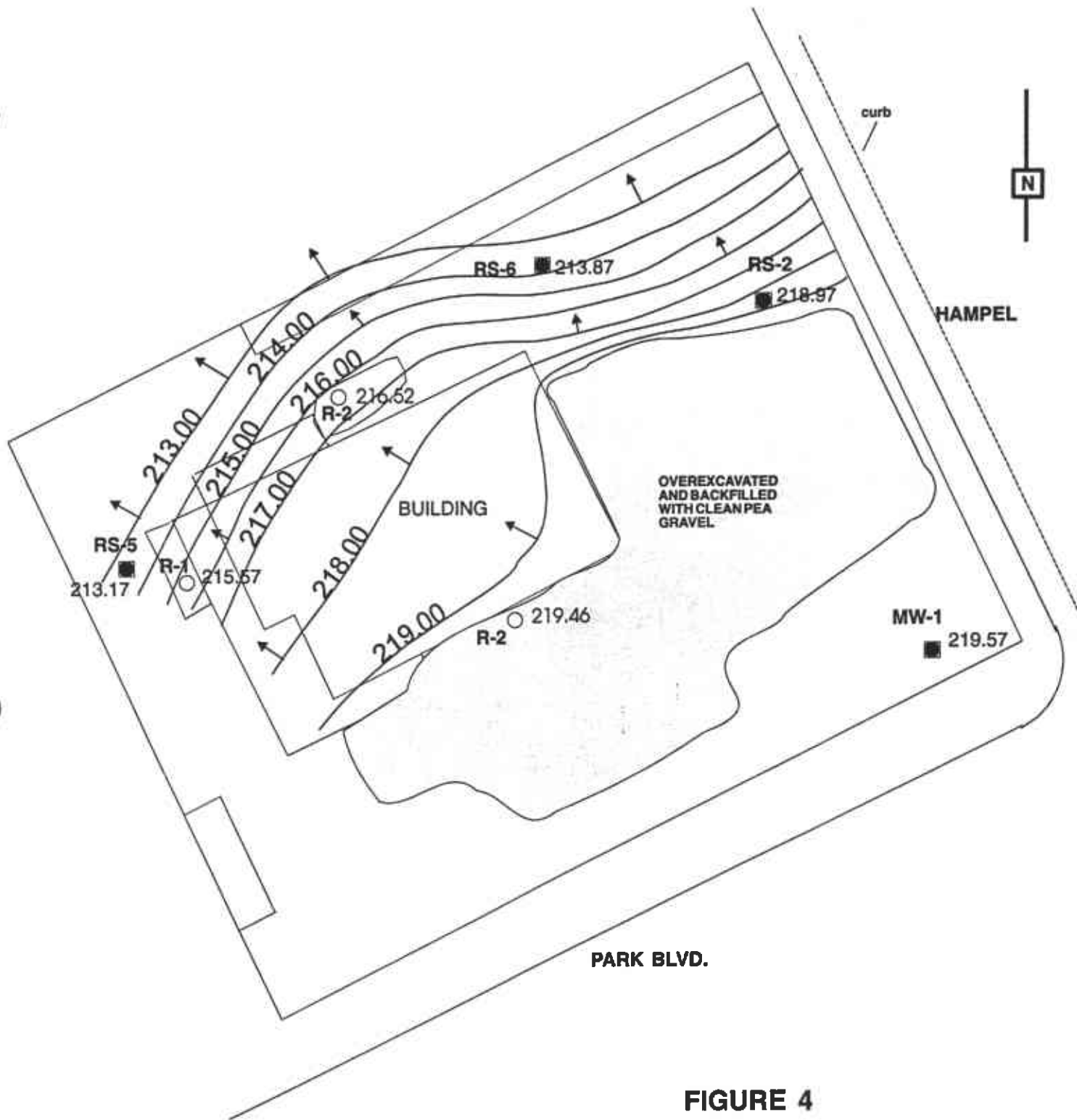


FIGURE 3

SITE BASE MAP

DESERT PETROLEUM STATION #793  
 4035 PARK BLVD..  
 OAKLAND, CALIFORNIA 94602

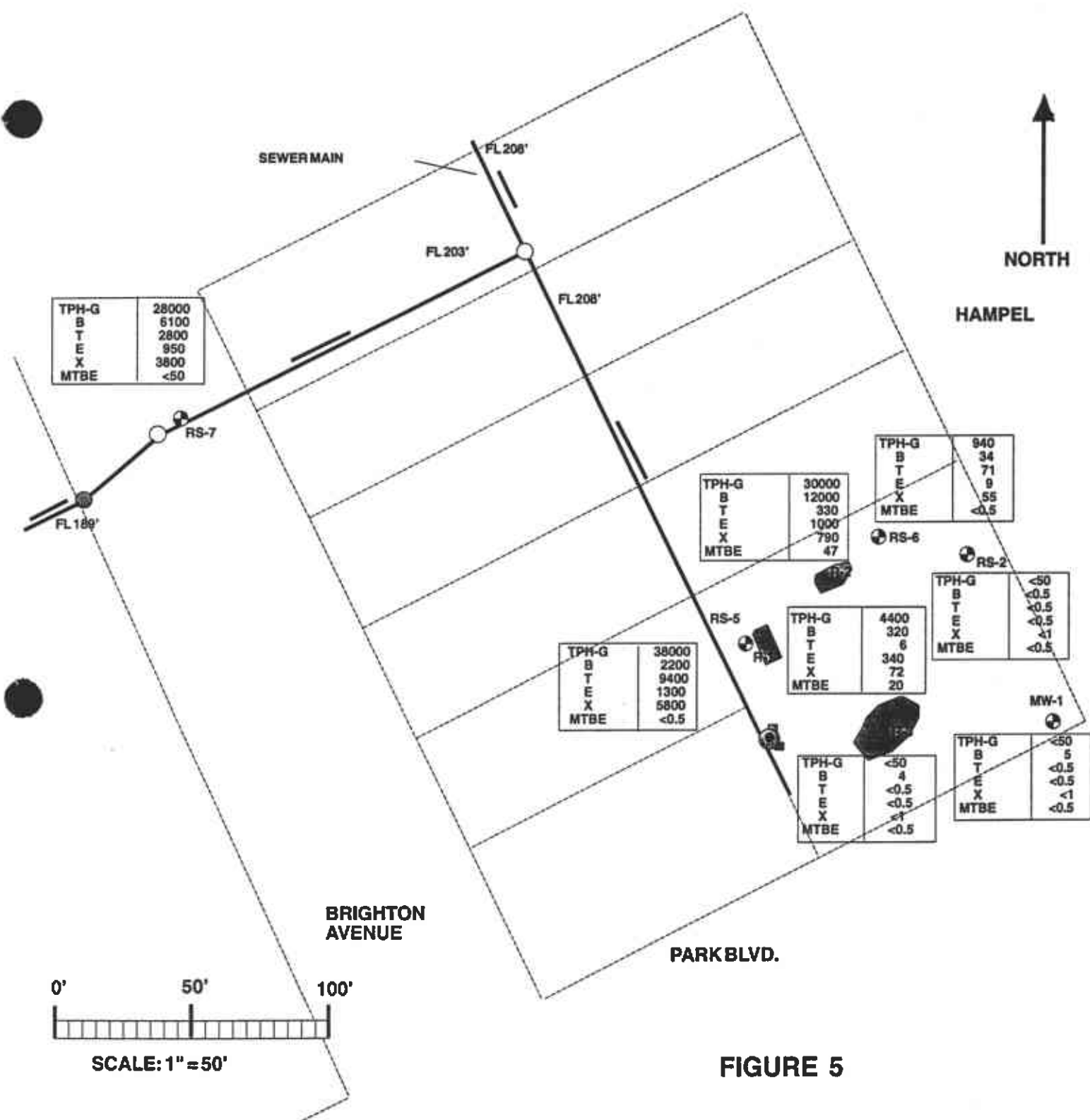




**FIGURE 4**

**GROUNDWATER ELEVATION GRADIENTS  
AND FLOW DIRECTION FOR 9/2/97**

DESERT PETROLEUM STATION #793  
4035 PARK BLVD.  
OAKLAND, CALIFORNIA 94602



TPH-G	28000
B	6100
T	2800
E	950
X	3800
MTBE	<50

TPH-G	30000
B	12000
T	330
E	1000
X	790
MTBE	47

TPH-G	940
B	34
T	71
E	9
X	55
MTBE	<0.5

TPH-G	<50
B	<0.5
T	<0.5
E	<0.5
X	<1
MTBE	<0.5

TPH-G	38000
B	2200
T	9400
E	1300
X	5800
MTBE	<0.5

TPH-G	4400
B	320
T	6
E	340
X	72
MTBE	20

TPH-G	<50
B	4
T	<0.5
E	<0.5
X	<1
MTBE	<0.5

TPH-G	<50
B	5
T	<0.5
E	<0.5
X	<1
MTBE	<0.5

**FIGURE 5**

**EXPLANATION**

- MW-1 MONITOR WELL LOCATION WITH ID# AND GROUNDWATER ANALYTICAL RESULTS. ALL CONCENTRATIONS IN UG/L
- TPH-G = TOTAL PETROLEUM HYDROCARBONS AS GASOLINE
- B = BENZENE
- T = TOLUENE
- E = ETHYLBENZENE
- X = XYLENES
- MTBE = METHYL tertiary-BUTYLETHER
- R-1 INJECTION/RECOVERY TRENCHES AND RECOVERY WELLS

**ANALYTICAL RESULTS FROM GROUNDWATER SAMPLES COLLECTED FROM MONITOR WELLS ON 9/2/97**

**DESERT PETROLEUM STATION #793  
4035 PARK BLVD.  
OAKLAND, CALIFORNIA**

## **APPENDIX A: METHODS AND PROCEDURES QA/QC**

This Appendix documents the specific methods, procedures, and materials used to collect and analyze groundwater samples.

### **GAUGING AND MEASURING MONITOR WELLS**

Prior to sampling a well, WEGE personnel obtain three measurements:

1. the depth to groundwater (DTW);
2. the product thickness using a battery powered depth to water-product interface probe and/or by using a specially designed bailer;
3. the total depth of casing, to calculate the total water volume in the well.

The DTW-product interface probe is lowered into the well casing until the instrument signals when the top of free phase floating product (if present) and/or the top of water is reached. The distance from the top of free phase floating product and/or water to the top of casing is read from the tape that is attached to the probe. The probe is then lowered to the bottom of the well and the tape is read again. The tape is calibrated in 0.01-foot intervals for accuracy to 0.01 foot. The measured distance is subtracted from the established elevation at the top of casing to determine the elevation of groundwater with respect to mean sea level and the difference between the top of groundwater and the base of the well is noted to establish water volume in the well. The probe and tape is washed with TSP (Tri Sodium Phosphate) and rinsed in distilled water before each measurement. WEGE has designed and built bailers that will collect a sample of the contents of a well to show the exact thickness of any floating product. Some of the abbreviations used in water sampling and or measuring or monitoring are: BGS, Below Ground Surface; DTW, Depth to Water (from surface reference i.e. usually TOC); TOC, Top of Casing; MSL, Mean Sea Level; AMSL and BMSL, Above and Below MSL; BS, Below Surface; TOW, Top of Water; TSP, Tri Sodium Phosphate.

### **PURGING STANDING WATER FROM MONITOR WELLS**

If no product is present, WEGE personnel purge the well by removing groundwater until the water quality parameters (temperature, pH, and conductivity) stabilize, or until the well is emptied of water. Periodic measurements of groundwater temperature, pH, and conductivity are taken with a Hydac Monitor or other meter and recorded along with the volume of groundwater removed from the well. Purging is done by one or more methods singularly or in combination. Bailers, pneumatic or electric sample pumps, or vacuum pump tanks or trucks may be used. The usual amount of water removed is three borehole volumes, unless otherwise stated.

$$BV = (7.48/4) \times (CD^2 + P (BD^2 - CD^2)) \times (WD - GW)$$

BV borehole volume (gallons)  
 CD casing diameter (feet)  
 GW depth to groundwater (feet)

BD borehole diameter (feet)  
 WD well depth (feet)  
 P porosity of the gravel pack, 25%

Table of Common Boring and Casing Diameters

Boring diameter inches	Casing diameter inches	Volume gallons/ foot	3 VolumesX (WD-GW) gallons /foot
4	1	0.042	0.126
6	1	0.082	0.246
6	2	0.173	0.519
8	2	0.277	0.831
8	4	0.671	2.013
10	2	0.572	1.716
10	4	0.844	2.532

EXAMPLE: An 8 inch boring with 2 inch casing requires removal of 0.831 gallons of water per foot of water column.

The water collected during purging is either safely stored on-site in 55 gallon DOT 17H drums for later disposition, transported to an approved on-site/off-site treatment facility or to a sewer discharge system.

### COLLECTION OF WATER SAMPLE FOR ANALYSIS

The groundwater in the well is allowed to recover to at least 80% of its volume prior to purging, if practical, before the groundwater sample is collected.

$$\text{Percent Recovery} = \left(1 - \frac{\text{Residual drawdown}}{\text{Maximum drawdown}}\right) \times 100.$$

A fresh bailer is used to collect enough water for the requirements of the laboratory for the analyses needed or required. The water samples are decanted from the bailer into the appropriate number and size containers. These containers are furnished pre-cleaned to exact EPA protocols, with and without preservatives added, by the analytical laboratory or a chemical supply company. The bottles are filled, with no headspace, and then capped with plastic caps with teflon liners.

The vials or bottles containing the groundwater samples are labeled with site name, station, date, time, sampler, and analyses to be performed, and documented on a chain of



custody form. They are placed in ziplock bags and stored in a chest cooled to 4 °C with ice. The preserved samples are COC (chain of custody) delivered to the chosen laboratory.

### ANALYTICAL RESULTS

TPH is the abbreviations used for Total Petroleum Hydrocarbons used by the laboratories for water and soil analyses. The letter following TPH indicates a particular distinction or grouping for the results. The letters "g", "d", "k", or "o" indicate gasoline, diesel, kerosene, or oil, respectively, i.e. TPH-d for diesel ranges TPH.

BTEX or MTBE are acronyms or abbreviations used for Benzene, Toluene, Ethylbenzene and all of the Xylenes (BTEX) and Methyl tertiary-Butyl Ether (MTBE), respectively. MBTEX is the designation for the combination of the above five compounds.

Laboratory lower detection limits unless otherwise noted, due to matrix interference or elevated concentrations of target compounds, are as follows:

TPHg	50 ug/L	MTBE	0.5 ug/L
Benzene	0.5 ug/L	Toluene	0.5 ug/L
Ethyl Benzene	0.5 ug/L	Total Xylenes	1.0 ug/L

The less than symbol, <, used with a "parts per value" indicates the lower detection limit for a given analytical result and the level, if present, of that particular analyte is below or less than that lower detection limit.

Other abbreviations commonly used are ppm, ppb, mg/Kg, ug/Kg, ml/l and ul/l are parts per million, parts per billion, milligrams per kilogram, micrograms per kilogram, milliliters per liter, microliters per liter, respectively.

### CHAIN OF CUSTODY DOCUMENTATION

All water samples that are collected by WEGE and transported to a certified analytical laboratory are accompanied by chain-of-custody (COC) documentation. This documentation is used to record the movement and custody of a sample from collection in the field to final analysis and storage. Samples to be analyzed at the certified laboratory were logged on the COC sheet provided by the laboratory. The same information provided on the sample labels (site name, sample location, date, time, and analysis to be performed) is also noted on the COC form. Each person relinquishing custody of the sample set signs the COC form indicating the date and time of the transfer to the recipient. A copy of the COC follows the samples or their extracts throughout the laboratory to aid the analyst in identifying the samples and to assure analysis within holding times. Copies of the COC documentation are included with the laboratory results in Appendix C of the sampling report.

# WELL SAMPLING DATA SHEET

SITE DP 793	DATE 9-2-97	TIME 9:11
WELL mw 1	SAMPLED BY. mp	
WELL ELEVATION		
PRODUCT THICKNESS		
DEPTH TO WATER DTW: 13.0 DTB: 18.32		
FLUID ELEVATION 219.57		
BAILER TYPE Disposable Bailer		
PUMP David LTT		

## WELL PURGING RECORD

TIME	VOLUME REMOVED	TEMP.	pH	COND.
9:12	1st bailer	71.8	7.72	.24 x1000
9:19	2.5 gal	70.9	7.77	.18
9:21		70.3	7.72	.17
9:22		70.1	7.75	.17
9:23		70.2	7.76	.17
9:24		70.4	7.71	.17
Sampled				

FINAL VOLUME PURGED 4 gal
TIME SAMPLED 9:25
SAMPLE ID. mw 1
SAMPLE CONTAINERS 2 vials
ANALYSIS TO BE RUN TPHg/BTEX/MTOE
LABORATORY AEM NSE
NOTES: 1st bailer clear No odor

## WELL SAMPLING DATA SHEET

SITE DP 793	DATE 9-2-97	TIME 10:38
WELL R1	SAMPLED BY. mp	
WELL ELEVATION		
PRODUCT THICKNESS 14.98		
DEPTH TO WATER DTW: <del>16.92</del> DTB: 16.92		
FLUID ELEVATION 215.75		
BAILER TYPE Disposable Bailer		
PUMP David LTT		

WELL PURGING RECORD				
TIME	VOLUME REMOVED	TEMP.	pH	COND.
10:39	1st bailer	68.8	7.89	.16
10:50	9 gal	71.0	7.86	.20
10:51		69.3	7.82	.20
10:52		68.3	7.80	.20
10:53		68.6	7.82	.20
10:54		68.4	7.81	.20
10:55		68.5	7.82	.20
<i>Samp/col</i>				

FINAL VOLUME PURGED 10 <sup>3</sup> / <sub>4</sub> gal
TIME SAMPLED 10:56
SAMPLE ID. R1
SAMPLE CONTAINERS 2 VOVS
ANALYSIS TO BE RUN TPHg/BTEX/MDE
LABORATORY NEM NSE
NOTES: 1st bailer clear No odor

## WELL SAMPLING DATA SHEET

SITE DP 793	DATE 9-2-97	TIME 10:18
WELL R-2	SAMPLED BY. mp	
WELL ELEVATION		
PRODUCT THICKNESS		
DEPTH TO WATER DTW: 14.16 DTB: 16.80		
FLUID ELEVATION 216.52		
BAILER TYPE Disposable Bailer		
PUMP David LTT		

WELL PURGING RECORD				
TIME	VOLUME REMOVED	TEMP.	pH	COND.
10:19	1st bailer	68.5	7.75	.21
10:22	12 gal	67.4	7.67	.21
10:23		66.9	7.67	.21
10:24		66.7	7.67	.21
10:25		66.8	7.67	.21
10:26		66.8	7.67	.21
<i>Sampling</i>				

FINAL VOLUME PURGED 13 1/2 gal
TIME SAMPLED 10:27
SAMPLE ID. R-2
SAMPLE CONTAINERS 2 VOQS
ANALYSIS TO BE RUN TPHg/BTEX/MTDE
LABORATORY AKM NSE
NOTES: 1st bailer clear No odor

## WELL SAMPLING DATA SHEET

SITE DP 793	DATE 9-2-97	TIME 11:06
WELL R-3	SAMPLED BY. <i>mp</i>	
WELL ELEVATION		
PRODUCT THICKNESS		
DEPTH TO WATER DTW: 10.86 DTB: 11.75		
FLUID ELEVATION 217.46		
BAILER TYPE Disposable Bailer		
PUMP David LTT		

WELL PURGING RECORD				
TIME	VOLUME REMOVED	TEMP.	pH	COND.
11:07	1st bailer	74.9	8.20	.28 x1000
11:10	4 gal	75.4	7.72	.27
11:11		74.3	7.70	.27
11:12		74.4	7.71	.27
11:13		74.6	7.20	.27
11:14		74.5	7.70	.27
11:15		74.6	7.70	.27

FINAL VOLUME PURGED 5 <sup>3</sup> / <sub>4</sub> gal
TIME SAMPLED 11:16
SAMPLE ID. R-3
SAMPLE CONTAINERS 2 VOQS
ANALYSIS TO BE RUN TPHg/BTEX/MTDE
LABORATORY ARMA NSE
NOTES: 1st bailer clear No odor

## WELL SAMPLING DATA SHEET

SITE DP 793	DATE 9-2-97	TIME 9:32
WELL RS-2	SAMPLED BY. <i>mp</i>	
WELL ELEVATION		
PRODUCT THICKNESS		
DEPTH TO WATER DTW: 11.46 DTB: 18.40		
FLUID ELEVATION 218.97		
BAILER TYPE Disposable Bailer		
PUMP David LTT		

WELL PURGING RECORD				
TIME	VOLUME REMOVED	TEMP.	pH	COND.
9:33	1st bailer	71.2	7.65	.27 x1000
9:50	13.5 gal	70.7	7.57	.26
9:51		70.4	7.64	.26
9:52		70.2	7.65	.26
9:53		70.5	7.65	.26
			<i>Sampled</i>	

FINAL VOLUME PURGED 15 gal
TIME SAMPLED 9:54
SAMPLE ID. RS-2
SAMPLE CONTAINERS 2 VOVS
ANALYSIS TO BE RUN TPHg/BTEX/MTOE
LABORATORY AKM NSE
NOTES: 1st bailer clear No odor
Now Bailer

## WELL SAMPLING DATA SHEET

SITE DP 793	DATE 9-2-97	TIME 10:35
WELL RS-5	SAMPLED BY. mp	
WELL ELEVATION		
PRODUCT THICKNESS		
DEPTH TO WATER DTW: 17.97 DTB: 39.20		
FLUID ELEVATION 213.17		
BAILER TYPE Disposable Bailer		
PUMP David LTT		

### WELL PURGING RECORD

TIME	VOLUME REMOVED	TEMP.	pH	COND.
10:36	1st bailer	69.3	7.88	.18 x1000
11:00	40 gal	68.4	7.81	.18
11:02		67.8	7.81	.18
11:03		68.2	7.81	.18
11:04		68.4	7.81	.18
11:05		68.5	7.81	.18
			Sampler	

42

FINAL VOLUME PURGED 4 1/2 gal
TIME SAMPLED 11:06
SAMPLE ID. RS-5
SAMPLE CONTAINERS 2 Vials
ANALYSIS TO BE RUN TPHg/BTEX/MTDE
LABORATORY ARMA NSF
NOTES: 1st bailer clear No odor

## WELL SAMPLING DATA SHEET

SITE DP 793	DATE 9-2-97	TIME 9:54
WELL RS-6	SAMPLED BY. <i>mp</i>	
WELL ELEVATION		
PRODUCT THICKNESS		
DEPTH TO WATER DTW: 16.35 DTB: 34.02		
FLUID ELEVATION 213.87		
BAILER TYPE Disposable Bailer		
PUMP David LTT		

### WELL PURGING RECORD

TIME	VOLUME REMOVED	TEMP.	pH	COND.
9:55	1st bailer	70.9	7.72	.22 x1000
10:03	25 gal	68.6	7.66	.23
10:06	2	68.1	7.65	.22
10:08	5	68.2	7.69	.22
10:09		68.4	7.67	.22
10:11		68.3	7.66	.22

32

FINAL VOLUME PURGED 33 1/2 gal
TIME SAMPLED 10:12
SAMPLE ID. RS-6
SAMPLE CONTAINERS 2 VOVS
ANALYSIS TO BE RUN TPHg/BTEX/MTOE
LABORATORY ARMA NSE
NOTES: 1st bailer clear No odor



## WELL SAMPLING DATA SHEET

SITE DP 793	DATE 9-2-97	TIME 11:19
WELL RS-7	SAMPLED BY. <i>mp</i>	
WELL ELEVATION		
PRODUCT THICKNESS		
DEPTH TO WATER DTW: 3.96 DTB: 7.0		
FLUID ELEVATION 195.39		
BAILER TYPE Disposable Bailer		
PUMP David LTT		

WELL PURGING RECORD				
TIME	VOLUME REMOVED	TEMP.	pH	COND.
11:20	1st bailer	77.0	7.27	.24 <span style="font-size: small;">x1000</span>
11:24	15 gal	76.6	7.39	.23
11:25		76.8	7.41	.23
11:26		76.6	7.40	.23
11:27		76.7	7.41	.23
11:28		76.5	7.41	.23
			<i>Sampled</i>	

FINAL VOLUME PURGED 16 1/2 gal
TIME SAMPLED 11:29
SAMPLE ID. RS-7
SAMPLE CONTAINERS 2 VOQS
ANALYSIS TO BE RUN TPHg/BTEX/MTDE
LABORATORY <del>NSM</del> NSE
NOTES: 1st bailer clear No odor



North State Environmental  
Chemical Waste Disposal • Trucking • Consulting

C E R T I F I C A T E O F A N A L Y S I S

Lab Number: 97-822  
Client: Western Geo-Engineers  
Project: DP 793 / Park Blvd

Date Reported: 09/22/97

Gasoline, BTEX and MTBE by Methods 8015M and 8020

Analyte	Method	Result	Unit	Date Sampled	Date Analyzed
Sample: 97-822-01		Client ID: MW-1		09/02/97	WATER
Gasoline	8015M	ND			09/16/97
Benzene	8020	5	ug/L		
Ethylbenzene	8020	ND			
MTBE	8020	ND			
Toluene	8020	ND			
Xylenes	8020	ND			
Sample: 97-822-02		Client ID: R1		09/02/97	WATER
Gasoline	8015M	4400	ug/L		09/16/97
Benzene	8020	320	ug/L		
Ethylbenzene	8020	340	ug/L		
MTBE	8020	20	ug/L		
Toluene	8020	6	ug/L		
Xylenes	8020	72	ug/L		
Sample: 97-822-03		Client ID: R2		09/02/97	WATER
Gasoline	8015M	30000	ug/L		09/16/97
Benzene	8020	12000	ug/L		
Ethylbenzene	8020	1000	ug/L		
MTBE	8020	47	ug/L		
Toluene	8020	330	ug/L		
Xylenes	8020	790	ug/L		

\*Confirmed by GC/MS Method 8260.



North State Environmental  
Chemical Waste Disposal • Trucking • Consulting

# C E R T I F I C A T E O F A N A L Y S I S

Lab Number: 97-822  
Client: Western Geo-Engineers  
Project: DP 793 / Park Blvd

Date Reported: 09/22/97

Gasoline, BTEX and MTBE by Methods 8015M and 8020

Analyte	Method	Result	Unit	Date Sampled	Date Analyzed
Sample: 97-822-04 Client ID: R3				09/02/97	WATER
Gasoline	8015M	ND			09/16/97
Benzene	8020	4	ug/L		
Ethylbenzene	8020	ND			
MTBE	8020	ND			
Toluene	8020	ND			
Xylenes	8020	ND			
Sample: 97-822-05 Client ID: RS-2				09/02/97	WATER
Gasoline	8015M	ND			09/16/97
Benzene	8020	ND			
Ethylbenzene	8020	ND			
MTBE	8020	ND			
Toluene	8020	ND			
Xylenes	8020	ND			
Sample: 97-822-06 Client ID: RS-5				09/02/97	WATER
Gasoline	8015M	38000	ug/L		09/16/97
Benzene	8020	2200	ug/L		
Ethylbenzene	8020	1300	ug/L		
MTBE	8020	*ND			
Toluene	8020	9400	ug/L		
Xylenes	8020	5800	ug/L		

\*Confirmed by GC/MS Method 8260.



North State Environmental  
Chemical Waste Disposal · Trucking · Consulting

C E R T I F I C A T E O F A N A L Y S I S

Lab Number: 97-822  
Client: Western Geo-Engineers  
Project: DP 793 / Park Blvd

Date Reported: 09/22/97

Gasoline, BTEX and MTBE by Methods 8015M and 8020

Analyte	Method	Result	Unit	Date Sampled	Date Analyzed
Sample: 97-822-07		Client ID: RS-6		09/02/97	WATER
Gasoline	8015M	940	ug/L		09/16/97
Benzene	8020	34	ug/L		
Ethylbenzene	8020	9	ug/L		
MTBE	8020	ND			
Toluene	8020	71	ug/L		
Xylenes	8020	55	ug/L		
Sample: 97-822-08		Client ID: RS-7		09/02/97	WATER
Gasoline	8015M	28000	ug/L		09/16/97
Benzene	8020	6100	ug/L		
Ethylbenzene	8020	950	ug/L		
MTBE	8020	ND<50	ug/L		
Toluene	8020	2800	ug/L		
Xylenes	8020	3800	ug/L		

\*Confirmed by GC/MS Method 8260.



North State Environmental  
Chemical Waste Disposal • Trucking • Consulting

## CERTIFICATE OF ANALYSIS

Quality Control/Quality Assurance

Lab Number: 97-822  
Client: Western Geo-Engineers  
Project: DP 793 / Park Blvd

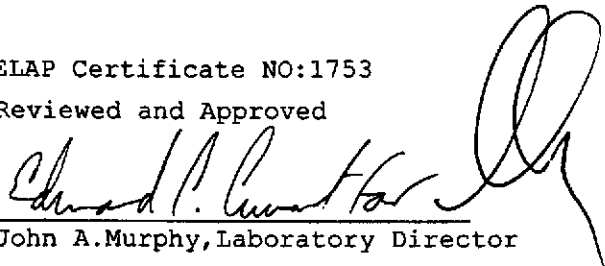
Date Reported: 09/29/97

Gasoline, BTEX and MTBE by Methods 8015M and 8020

Analyte	Method	Reporting Limit	Unit	Blank	MS/MSD Recovery	RPD
Gasoline	8015M	50	ug/L	ND	932	4
Benzene	8020	0.5	ug/L	ND	95	9
Ethylbenzene	8020	0.5	ug/L	ND	98	7
Toluene	8020	0.5	ug/L	ND	95	9
Xylenes	8020	1.0	ug/L	ND	90	2
MTBE	8020	0.5	ug/L	ND	83	9

ELAP Certificate NO: 1753

Reviewed and Approved

  
John A. Murphy, Laboratory Director

Page 4 of 4



# North State Environmental Analytical Laboratory

Phone: (415) 588-9652 Fax: (415) 588-1950

97-822

Chain of Custody / Request for Analysis

Lab Job No.: \_\_\_\_\_ Page \_\_\_ of \_\_\_

Client: <i>Western Geo Engineers</i>	Report to: <i>Same</i>	Phone: <i>(916) 668-5300</i>	Turnaround Time
Mailing Address: <i>Western Geo Engineers 1386 E. Beamer St Woodland C.A. 95776</i>	Billing to: <i>Same</i>	Fax: <i>(916) 662-0273</i>	
		PO# / Billing Reference:	Date:
			Sampler:

Project / Site Address: <i>DP 793</i>					Analysis Requested								Comments/Hazards
Sample ID	Sample Type	Container No. / Type	Pres.	Sampling Date / Time	<i>TPHs/BTEX</i>	<i>MTBE</i>							
<i>1 MW-1</i>	<i>7</i>	<i>2/Voags</i>	<i>HCL</i>	<i>9-2-97 / 9:25</i>	<i>X</i>	<i>X</i>							
<i>2 R1</i>				<i>10:56</i>	<i>X</i>	<i>X</i>							
<i>3 R2</i>				<i>10:27</i>	<i>X</i>	<i>X</i>							
<i>4 R3</i>				<i>11:16</i>	<i>X</i>	<i>X</i>							
<i>5 RS-2</i>				<i>9:54</i>	<i>X</i>	<i>X</i>							
<i>6 RS-5</i>				<i>11:06</i>	<i>X</i>	<i>X</i>							
<i>7 RS-6</i>				<i>10:12</i>	<i>X</i>	<i>X</i>							
<i>8 RS-7</i>				<i>11:29</i>	<i>X</i>	<i>X</i>							

Relinquished by: <i>Matt Pemick</i>	Date: <i>9-4-97</i> Time: <i>9:00</i>	Received by: <i>Rappaport</i>	Lab Comments
Relinquished by: <i>Doug [Signature]</i>	Date: <i>9/4/97</i> Time: <i>11:20 PM</i>	Received by: <i>[Signature] USES</i>	
Relinquished by:	Date: Time:	Received by:	