



**RECEIVED**  
1:08 pm, Aug 02, 2010  
Alameda County  
Environmental Health

ARCADIS U.S., Inc.  
100 Montgomery Street, Suite 300  
San Francisco, California 94104  
Tel 415.374.2744  
Fax 415.374.2745  
www.arcadis-us.com

Re: Second Quarter 2010 Ground-Water Monitoring Report  
Former BP Station #11109  
4280 Foothill Blvd.  
Oakland, California  
ACEH Case #RO0000426

ENVIRONMENTAL

"I declare that to the best of my knowledge at the present time, that the information and/or recommendations contained in the attached document are true and correct."

Submitted by:  
ARCADIS U.S., Inc.

Hollis E. Phillips, PG  
Project Manager

Date:  
07/30/2010  
Contact:  
Hollis E. Phillips  
Phone:  
415.374.2744 ext 13  
Email:  
Hollis.phillips@arcadis-us.com  
Our ref:  
GP09BPNA.C106



**Second Quarter 2010 Ground-Water Monitoring Report**

Former BP Station #11109  
4280 Foothill Blvd., Oakland, California  
ACEH Case #RO0000426

Prepared for

Ms. Hollis Phillips, PG  
Senior Geologist  
ARCADIS-US, Inc.  
100 Montgomery Street, Ste. 300  
San Francisco, California 94104

On behalf of

Atlantic Richfield Company  
P.O. Box 1257  
San Ramon, California 94583

Prepared by



1324 Mangrove Avenue, Suite 212  
Chico, California 95926  
(530) 566-1400  
*www.broadbentinc.com*

July 30, 2010

Project No. 09-88-646

July 30, 2010

Project No. 09-88-646

ARCADIS-US, Inc.  
100 Montgomery Street, Suite 300  
San Francisco, California 94104  
Submitted via ENFOS

Attn.: Ms. Hollis Phillips, PG – Senior Geologist

Re: Second Quarter 2010 Ground-Water Monitoring Report, Former BP Service Station  
#11109, 4280 Foothill Boulevard, Oakland, Alameda County, California;  
ACEH Case #RO0000426

Dear Ms. Phillips:

Provided herein is the *Second Quarter 2010 Ground-Water Monitoring Report* for Former BP Service Station #11109 located at 4280 Foothill Boulevard, Oakland, California (Site). This report presents a summary of results from ground-water monitoring conducted at the Site during the Second Quarter of 2010.


Should you have questions regarding the work performed or results obtained, please do not hesitate to contact us at (530) 566-1400.

Sincerely,

BROADBENT & ASSOCIATES, INC.



Jason Duda  
Project Scientist



Thomas A. Venus, P.E.  
Senior Engineer



Enclosure

cc: Mr. Paresh Khatri, Alameda County Environmental Health (Submitted via ACEH ftp Site)  
Ms. Shelby Lathrop, ConocoPhillips, 76 Broadway, Sacramento, California 95818  
Electronic copy uploaded to GeoTracker

## STATION #11109 GROUND-WATER MONITORING REPORT

Facility: #11109	Address:	4280 Foothill Boulevard, Oakland
ARCADIS Project Manager:		Ms. Hollis Phillips, PG
Consulting Co./Contact Persons:		Broadbent & Associates, Inc.(BAI)/Jason Duda & Tom Venus (530) 566-1400
Primary Agency/Regulatory ID No.:		Alameda County Environmental Health (ACEH) ACEH Case #RO0000426
Consultant Project No.:		09-88-646

### WORK PERFORMED THIS QUARTER (Second Quarter 2010):

1. Prepared and submitted *First Quarter 2010 Ground-Water Monitoring Report* (BAI, 4/30/2010).
2. Conducted ground-water monitoring/sampling for Second Quarter 2010. Work performed on June 10, 2010 by BAI.
3. Performed monthly free product gauging and bailing of wells MW-5 and MW-10 through MW-12. Work performed on April 19, May 18, and June 10, 2010 by BAI.

### WORK PROPOSED FOR NEXT QUARTER (Third Quarter 2010):

1. Prepare and submit this *Second Quarter 2010 Ground-Water Monitoring Report* (contained herein).
2. Perform monthly free product gauging and bailing of wells MW-5 and MW-10 through MW-12.
3. Conduct ground-water monitoring/sampling for Third Quarter 2010.

### QUARTERLY RESULTS SUMMARY:

Current phase of project:	<b>Ground-water monitoring/sampling/DPE IRM</b>
Frequency of ground-water monitoring:	<b>Monthly: MW-5, MW-10, MW-11, and MW-12 (Measure/ Bail FP if present)</b>
Frequency of ground-water sampling:	<b>Semi-Annually (1Q &amp; 3Q): MW-2 through MW-12 Quarterly: MW-10, MW-11, and MW-12 (one year) Semi-Annually (1Q &amp; 3Q): MW-2 through MW-9</b>
Current remediation techniques:	<b>Monthly Free Product Bailing</b>
Is Free Product (FP) present on-site:	<b>Yes (MW-5 and MW-10 through MW-12)</b>
FP recovered this quarter:	<b>7.5 gallons (FP/water mixture)</b>
Depth to ground water (below TOC):	<b>8.26 ft (MW-5) to 12.67 ft (MW-4)</b>
General ground-water flow direction:	<b>Northwest</b>
Approximate hydraulic gradient:	<b>0.02 ft/ft</b>

### DISCUSSION:

The Second Quarter 2010 semi-annual ground-water monitoring and sampling event was conducted at Former BP Station #11109 on June 10, 2010 by BAI. Water levels were gauged in each of the eleven wells at the Site. Well MW-2 was reported as dry even though the well was originally drilled to a total depth of 20 feet below ground surface (bgs). A root mass is suspected to be present at approximately 13 feet bgs. Separate phase hydrocarbons (SPH, or Free Product – FP) was observed in wells MW-5 and MW-10. A sheen was observed in wells MW-11 and MW-12. No other irregularities were noted during water level gauging. Depth to water measurements across the Site ranged from 8.26 ft at MW-5 (under 0.06 ft of FP) to 12.67 ft at MW-4. Resulting ground-water surface elevations ranged

from 31.00 ft above datum in well MW-9 to 27.13 ft in well MW-8. Water level elevations associated with Station #11109 yielded a potentiometric ground-water flow direction and gradient of approximately 0.02 ft/ft to the northwest. Ground-water monitoring field data sheets for Station #11109 are provided within Appendix A. Measured depths to ground water and respective ground-water elevations are summarized in Table 1. Current and historic ground-water flow directions and gradients are provided in Table 3. A Site Location Map is provided as Drawing 1. Potentiometric ground-water elevation contours for Station #11109 are presented in Drawing 2.

Ground-water samples were not collected from wells MW-10 through MW-12 during the Second Quarter of 2010 due to the presence of separate phase hydrocarbons (SPH, or Free Product – FP) in each well (see following section for more details). Historic laboratory analytical results for Former BP Station #11109 are summarized in Table 1 and Table 2. Ground-water monitoring data (GEO\_WELL) were uploaded to the GeoTracker AB2886 database. Upload confirmation receipts are provided in Appendix B.

Separate phase hydrocarbons (SPH, or Free Product – FP) in wells MW-5 and MW-10 through MW-12 were monitored and removed, if present, during each month of the Second Quarter 2010. On April 19, 2010, no FP was measured in wells MW-5 and MW-10 through MW-12. However, a sheen was observed in wells MW-5 and MW-12 (heavy sheen). Approximately 0.5 gallons of FP/water mixture was bailed from well MW-12 during this visit. On May 18, 2010, no FP was measured in wells MW-5 and MW-10 through MW-12. On June 10, 2010 (during the scheduled quarterly sampling/monitoring event), FP thickness was measured in wells MW-5 at 0.06 feet and well MW-10 at 0.01 feet. A sheen was observed in wells MW-11 and MW-12. Approximately two gallons of FP/water mixture was bailed from well MW-5, two gallons from MW-10, two gallons from MW-11, and one gallon from MW-12 during this visit. Table 4 contains a summary of FP removal data.

## **CONCLUSIONS AND RECOMMENDATIONS:**

Water level elevations were between historic minimum and maximum ranges for each well gauged this quarter. The potentiometric ground-water flow direction and gradient of 0.02 ft/ft to the northwest is somewhat inconsistent with historical data but consistent with data collected during the last three quarters following the change in top of casing elevations resulting from a recent well survey. ARCADIS-US, Inc. submitted the *Feasibility Study and Corrective Action Plan* on 2 December 2009 in response to the directive letter from ACEH dated 13 August 2009. ARCADIS-US, Inc. is currently awaiting a response to this submittal.

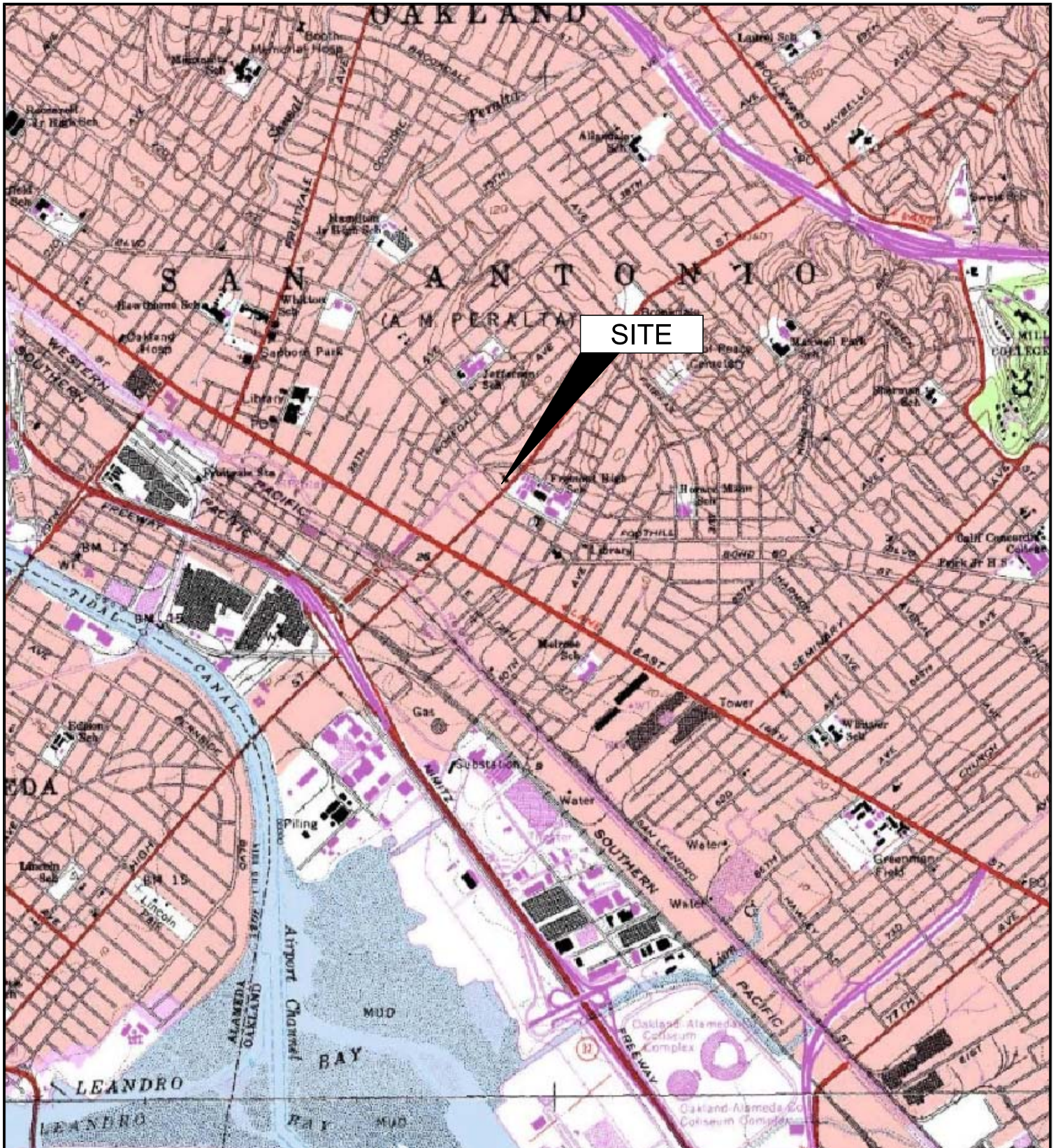
## **CLOSURE:**

The findings presented in this report are based upon: observations of BAI field personnel (see Appendix A) and the points investigated. Our services were performed in accordance with the generally accepted standard of practice at the time this report was written. No other warranty, expressed or implied was made. This report has been prepared for the exclusive use of ARCADIS-US, Inc. and Atlantic Richfield Company (a BP affiliated company). It is possible that variations in soil or ground-water conditions could exist beyond points explored in this investigation. Also, changes in site conditions could occur in the future due to variations in rainfall, temperature, regional water usage, or other factors.

**ATTACHMENTS:**

- Drawing 1. Site Location Map, Former BP Station #11109, 4280 Foothill Boulevard, Oakland, California
- Drawing 2. Ground-Water Elevation Contours and Analytical Summary Map, June 10, 2010, Former BP Station #11109, 4280 Foothill Boulevard, Oakland, California
- Table 1. Summary of Ground-Water Monitoring Data: Relative Water Elevations and Laboratory Analyses, Station #11109, 4280 Foothill Blvd., Oakland, California
- Table 2. Summary of Fuel Additives Analytical Data, Station #11109, 4280 Foothill Blvd., Oakland, California
- Table 3. Historical Ground-Water Flow Direction and Gradient, Station #11109, 4280 Foothill Blvd., Oakland, California
- Table 4. Summary of Free Product Removal, Former BP Service Station #11109, 4280 Foothill Boulevard, Oakland, California
- Appendix A. BAI Ground-Water Sampling Data (Includes Field Data Sheets and Field Procedures)
- Appendix B. GeoTracker Upload Confirmation Receipts





SITE

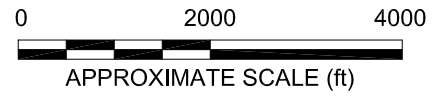
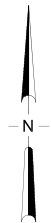
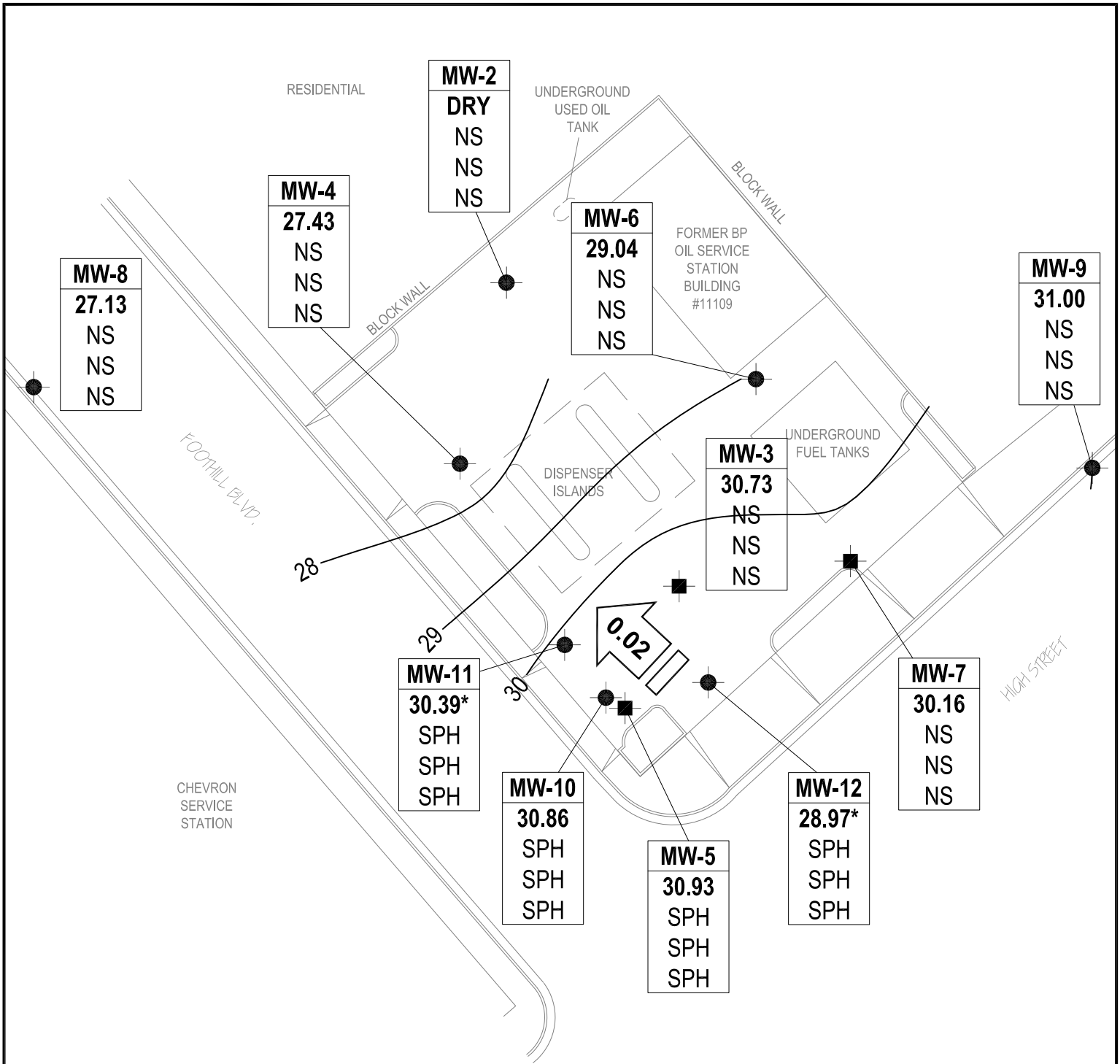
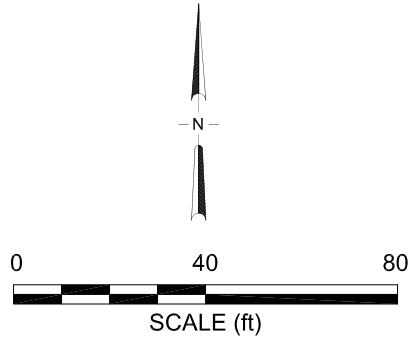


IMAGE SOURCE: USGS





	Monitor Well	NA	Not Applicable
	Recovery Well	NM	Not Monitored
— 30	Ground-Water Elevation Contour (ft)	NS	Not Sampled
<b>MW-3</b>	Well Designation	SPH	Separate Phase Hydrocarbons
<b>30.73</b>	Ground-Water Elevation (ft)	*	Elevation Not Used for Contouring
NS	GRO Concentration (µg/L)	<	Not Detected at or Above Laboratory Reporting Limits
NS	Benzene Concentration (µg/L)		Groundwater Elevation Flow Direction and Gradient (ft/ft)
NS	MTBE Concentration (µg/L)		





**Table 1. Summary of Ground-Water Monitoring Data: Relative Water Elevations and Laboratory Analyses**  
**Former BP Station #11109, 4280 Foothill Blvd., Oakland, CA**

Well and Sample Date	P/NP	Footnote	TOC Elevation (feet)	DTW (feet bgs)	Product Thickness (feet)	Water Level Elevation (feet)	Concentrations in (µg/L)						DO (mg/L)	Lab	pH	DRO/TPHd (µg/L)	TOG (µg/L)	HVOC (µg/L)
							GRO/TPHg	Benzene	Toluene	Ethyl-Benzene	Total Xylenes	MtBE						
<b>MW-1</b>																		
1/31/1990	--		38.19	15.41	--	22.78	--	--	--	--	--	--	--	--	--	--	--	--
2/5/1990	--	c	38.19	--	--	--	--	--	--	--	--	--	--	--	--	--	--	--
<b>MW-2</b>																		
2/5/1990	--		41.22	21.90	--	19.32	1,300	14	<0.1	9	13	--	--	SUP	--	--	--	--
2/14/1991	--	d	41.22	21.16	--	20.06	<50	<0.3	<0.3	<0.3	<0.3	--	--	SUP	--	<10000	<5000	51
5/13/1991	--	e	41.22	21.32	--	19.90	<50	<0.3	<0.3	<0.3	<0.3	--	--	SUP	--	<50	6,000	0.5
7/24/1991	--		41.22	22.92	--	18.30	--	--	--	--	--	--	--	--	--	--	--	--
10/3/1991	--	e	41.22	24.90	--	16.32	<50	<0.3	0.8	<0.3	<0.3	--	--	SUP	--	<50	<5000	0.7
10/15/1991	--		41.22	24.10	--	17.12	--	--	--	--	--	--	--	--	--	--	--	--
12/4/1991	--	f	41.22	--	--	--	--	--	--	--	--	--	--	--	--	--	--	--
12/16/1991	--		41.22	23.95	--	17.27	--	--	--	--	--	--	--	--	--	--	--	--
1/6/1992	--		41.22	23.30	--	17.92	<50	<0.3	<0.3	<0.3	<0.3	--	--	ANA	--	<50	<5000	--
1/22/1992	--		41.22	23.14	--	18.08	--	--	--	--	--	--	--	--	--	--	--	--
1/28/1992	--		41.22	22.99	--	18.23	--	--	--	--	--	--	--	--	--	--	--	--
2/5/1992	--		41.22	22.63	--	18.59	--	--	--	--	--	--	--	--	--	--	--	--
2/12/1992	--		41.22	22.04	--	19.18	--	--	--	--	--	--	--	--	--	--	--	--
2/17/1992	--		41.22	20.84	--	20.38	--	--	--	--	--	--	--	--	--	--	--	--
4/3/1992	--		41.22	18.29	--	22.93	--	--	--	--	--	--	--	--	--	--	--	--
4/8/1992	--		41.22	18.86	--	22.36	<50	<0.5	<0.5	<0.5	<0.5	--	--	ANA	--	63	<5000	--
4/14/1992	--		41.22	19.45	--	21.77	--	--	--	--	--	--	--	--	--	--	--	--
4/29/1992	--		41.22	20.35	--	20.87	--	--	--	--	--	--	--	--	--	--	--	--
5/7/1992	--		41.22	20.84	--	20.38	--	--	--	--	--	--	--	--	--	--	--	--
7/3/1992	--		41.22	22.34	--	18.88	<50	<0.5	<0.5	<0.5	<0.5	--	--	ANA	--	--	--	--
10/8/1992	--		41.22	23.73	--	17.49	<50	<0.5	<0.5	<0.5	<0.5	--	--	ANA	--	--	--	--
12/31/1992	--		41.22	21.12	--	20.10	<50	<0.5	<0.5	<0.5	<0.5	--	--	ANA	--	--	--	--
4/21/1993	--	g, n	41.22	17.68	--	23.54	<50	<0.5	<0.5	<0.5	<0.5	--	--	PACE	--	<50	<5000	--
7/7/1993	--	e, n	41.22	20.30	--	20.92	<50	<0.5	<0.5	<0.5	<0.5	--	--	PACE	--	--	--	1.0
9/21/1993	--	n	41.22	21.93	--	19.29	<50	0.9	0.7	0.7	2.6	21.54	--	PACE	--	--	--	--
12/17/1993	--		41.22	21.48	--	19.74	--	--	--	--	--	--	--	--	--	--	--	--
12/23/1993	--	n	41.22	--	--	--	<50	<0.5	<0.5	<0.5	0.7	--	--	PACE	--	--	--	--

**Table 1. Summary of Ground-Water Monitoring Data: Relative Water Elevations and Laboratory Analyses  
Former BP Station #11109, 4280 Foothill Blvd., Oakland, CA**

Well and Sample Date	P/NP	Footnote	TOC Elevation (feet)	DTW (feet bgs)	Product Thickness (feet)	Water Level Elevation (feet)	Concentrations in (µg/L)						DO (mg/L)	Lab	pH	DRO/TPHd (µg/L)	TOG (µg/L)	HVOC (µg/L)
							GRO/TPHg	Benzene	Toluene	Ethyl-Benzene	Total Xylenes	MtBE						
<b>MW-2 Cont.</b>																		
4/7/1994	--	n	41.22	20.25	--	20.97	<50	<0.5	<0.5	<0.5	<0.5	12.2	5.9	PACE	--	--	--	--
7/6/1994	--	n	41.22	20.59	--	20.63	<50	<0.5	<0.5	<0.5	<0.5	--	3.1	PACE	--	--	--	--
10/7/1994	--	n	41.22	22.04	--	19.18	<50	<0.5	<0.5	<0.5	<0.5	15.2	2.8	PACE	--	--	--	--
1/27/1995	--		41.22	26.12	--	15.10	<50	<0.5	<0.5	<0.5	<1	--	4.8	ATI	--	440	<5000	--
3/30/1995	--		41.22	12.34	--	28.88	<50	<0.50	<0.50	<0.50	<1.0	--	7.2	ATI	--	--	--	--
6/20/1995	--		41.22	16.42	--	24.80	<50	<0.50	<0.50	<0.50	<1.0	--	6.0	ATI	--	--	--	--
10/3/1995	--		41.22	20.06	--	21.16	<50	<0.50	<0.50	<0.50	<1.0	<5.0	5.7	ATI	--	--	--	--
12/6/1995	--		41.22	21.31	--	19.91	<50	<0.50	<0.50	<0.50	<1.0	46	5.4	ATI	--	--	--	--
3/21/1996	--		41.22	12.28	--	28.94	<50	<0.5	<1.0	<1.0	<1.0	<1.0	7.4	SPL	--	--	--	--
6/21/1996	--		41.22	13.28	--	27.94	<50	<0.5	<1	<1	<1	<10	7.3	SPL	--	--	--	--
9/6/1996	--		41.22	13.94	--	27.28	--	--	--	--	--	--	--	--	--	--	--	--
9/9/1996	--		41.22	--	--	--	<50	<0.5	<1.0	<1.0	<1.0	<10	7.4	SPL	--	--	--	--
12/19/1996	--		41.22	12.19	--	29.03	<50	<0.5	<1.0	<1.0	<1.0	<10	7.9	SPL	--	--	--	--
3/17/1997	--		41.22	11.59	--	29.63	--	--	--	--	--	--	--	--	--	--	--	--
8/12/1997	--		41.22	13.21	--	28.01	--	--	--	--	--	--	--	--	--	--	--	--
12/10/1997	--		41.22	12.34	--	28.88	--	--	--	--	--	--	--	--	--	--	--	--
3/12/1998	--		41.22	11.04	--	30.18	--	--	--	--	--	--	--	--	--	--	--	--
6/23/1998	--		41.22	11.77	--	29.45	--	--	--	--	--	--	--	--	--	--	--	--
3/31/1999	--		41.22	12.38	--	28.84	--	--	--	--	--	--	--	--	--	--	--	--
8/25/1999	--		41.22	17.72	--	23.50	--	--	--	--	--	--	--	--	--	--	--	--
3/9/2000	--		41.22	11.94	--	29.28	--	--	--	--	--	--	--	--	--	--	--	--
3/8/2001	--		41.22	10.31	--	30.91	--	--	--	--	--	--	--	--	--	--	--	--
3/8/2002	--		41.22	14.35	--	26.87	--	--	--	--	--	--	--	--	--	--	--	--
3/18/2002	--		41.22	13.11	--	28.11	--	--	--	--	--	--	--	--	--	--	--	--
3/11/2003	--		41.22	13.24	--	27.98	--	--	--	--	--	--	--	--	--	--	--	--
12/09/2003	P	q	41.22	18.58	--	22.64	350	<0.50	<0.50	0.56	2.8	24	--	SEQM	6.2	--	--	--
03/09/2004	P		41.22	12.52	--	28.70	74	<0.50	<0.50	0.83	4.7	27	--	SEQM	6.5	--	--	--
09/17/2004	P		41.22	18.05	--	23.17	59	<0.50	<0.50	<0.50	<0.50	21	--	SEQM	6.3	--	--	--
03/07/2005	--	p	41.22	2.32	--	38.90	--	--	--	--	--	--	--	--	--	--	--	--
09/06/2005	--	r	41.22	--	--	--	--	--	--	--	--	--	--	--	--	--	--	--
03/06/2006	--	p	41.22	--	--	--	--	--	--	--	--	--	--	--	--	--	--	--

**Table 1. Summary of Ground-Water Monitoring Data: Relative Water Elevations and Laboratory Analyses**  
**Former BP Station #11109, 4280 Foothill Blvd., Oakland, CA**

Well and Sample Date	P/NP	Footnote	TOC Elevation (feet)	DTW (feet bgs)	Product Thickness (feet)	Water Level Elevation (feet)	Concentrations in (µg/L)						DO (mg/L)	Lab	pH	DRO/TPHd (µg/L)	TOG (µg/L)	HVOC (µg/L)
							GRO/TPHg	Benzene	Toluene	Ethyl-Benzene	Total Xylenes	MtBE						
<b>MW-2 Cont.</b>																		
9/5/2006	--	p	41.22	10.46	--	30.76	79	<0.50	5.1	<0.50	0.73	<0.50	--	TAMC	6.4	--	--	--
3/5/2007	--	p	41.22	12.25	--	28.97	--	--	--	--	--	--	--	--	--	--	--	--
9/7/2007	--	r	41.22	--	--	--	--	--	--	--	--	--	--	--	--	--	--	--
3/6/2008	--	w	41.22	12.33	--	28.89	--	--	--	--	--	--	--	--	--	--	--	--
9/3/2008	--	r	41.22	--	--	--	--	--	--	--	--	--	--	--	--	--	--	--
3/4/2009	--	r	41.22	--	--	--	--	--	--	--	--	--	--	--	--	--	--	--
9/30/2009	--	r, x	41.22	--	--	--	--	--	--	--	--	--	--	--	--	--	--	--
10/28/2009	--	r	41.22	--	--	--	--	--	--	--	--	--	--	--	--	--	--	--
3/23/2010	--	r	41.22	--	--	--	--	--	--	--	--	--	--	--	--	--	--	--
<b>6/10/2010</b>	<b>--</b>	<b>r</b>	<b>41.22</b>	<b>--</b>	<b>--</b>	<b>--</b>	<b>--</b>	<b>--</b>	<b>--</b>	<b>--</b>	<b>--</b>	<b>--</b>	<b>--</b>	<b>--</b>	<b>--</b>	<b>--</b>	<b>--</b>	<b>--</b>
<b>MW-3</b>																		
2/5/1990	--		40.74	17.45	--	23.29	1,400	15	<2.5	11	8	--	--	SUP	--	--	--	--
2/14/1991	--		40.74	18.52	--	22.22	320	8	<0.3	8	1	--	--	SUP	--	--	--	--
5/13/1991	--		40.74	19.32	--	21.42	640	13	<0.3	18	1	--	--	SUP	--	--	--	--
7/24/1991	--		40.74	20.69	--	20.05	--	--	--	--	--	--	--	--	--	--	--	--
10/3/1991	--		40.74	19.47	--	21.27	940	21	<0.3	23	2.1	--	--	SUP	--	--	--	--
10/15/1991	--		40.74	20.46	--	20.28	--	--	--	--	--	--	--	--	--	--	--	--
12/4/1991	--		40.74	18.29	--	22.45	--	--	--	--	--	--	--	--	--	--	--	--
12/16/1991	--		40.74	18.34	--	22.40	--	--	--	--	--	--	--	--	--	--	--	--
1/6/1992	--		40.74	18.50	--	22.24	580	6.1	1	6.1	7.1	--	--	ANA	--	--	--	--
1/22/1992	--		40.74	17.86	--	22.88	--	--	--	--	--	--	--	--	--	--	--	--
1/28/1992	--		40.74	15.84	--	24.90	--	--	--	--	--	--	--	--	--	--	--	--
2/5/1992	--		40.74	17.53	--	23.21	--	--	--	--	--	--	--	--	--	--	--	--
2/12/1992	--		40.74	17.15	--	23.59	--	--	--	--	--	--	--	--	--	--	--	--
2/17/1992	--		40.74	16.18	--	24.56	--	--	--	--	--	--	--	--	--	--	--	--
4/3/1992	--		40.74	14.80	--	25.94	--	--	--	--	--	--	--	--	--	--	--	--
4/8/1992	--		40.74	17.06	--	23.68	1,100	30	4.6	32	11	--	--	ANA	--	--	--	--
4/14/1992	--		40.74	15.22	--	25.52	--	--	--	--	--	--	--	--	--	--	--	--
4/29/1992	--		40.74	15.90	--	24.84	--	--	--	--	--	--	--	--	--	--	--	--
5/7/1992	--		40.74	16.35	--	24.39	--	--	--	--	--	--	--	--	--	--	--	--

**Table 1. Summary of Ground-Water Monitoring Data: Relative Water Elevations and Laboratory Analyses**  
**Former BP Station #11109, 4280 Foothill Blvd., Oakland, CA**

Well and Sample Date	P/NP	Footnote	TOC Elevation (feet)	DTW (feet bgs)	Product Thickness (feet)	Water Level Elevation (feet)	Concentrations in (µg/L)						DO (mg/L)	Lab	pH	DRO/TPHd (µg/L)	TOG (µg/L)	HVOC (µg/L)
							GRO/TPHg	Benzene	Toluene	Ethyl-Benzene	Total Xylenes	MtBE						
<b>MW-3 Cont.</b>																		
7/3/1992	--		40.74	17.74	--	23.00	1,200	38	<2.5	24	<2.5	--	--	ANA	--	--	--	--
10/8/1992	--		40.74	19.06	--	21.68	1,400	31	<0.5	25	13	--	--	ANA	--	--	--	--
12/31/1992	--	h	40.74	--	--	--	960	11	3.6	10	3.8	--	--	ANA	--	--	--	--
12/31/1992	--		40.74	16.61	--	24.13	820	12	4.1	13	5.9	--	--	ANA	--	--	--	--
4/21/1993	--	n	40.74	14.24	--	26.50	420	5.6	<0.5	3.9	1.4	--	--	PACE	--	--	--	--
4/21/1993	--	h, n	40.74	--	--	--	390	5	<0.5	3.7	1.5	--	--	PACE	--	--	--	--
7/7/1993	--	i, n	40.13	15.19	--	24.94	54	0.6	0.6	<0.5	<0.5	12.68	--	PACE	--	--	--	--
9/21/1993	--	n	40.13	16.58	--	23.55	540	7.9	0.9	4.7	2.4	--	--	PACE	--	--	--	--
12/17/1993	--		40.13	15.82	--	24.31	--	--	--	--	--	--	--	--	--	--	--	--
12/23/1993	--	h	40.13	--	--	--	480	9.2	<0.5	5.4	5.3	--	--	PACE	--	--	--	--
12/23/1993	--	n	40.13	--	--	--	500	9.8	1.5	3.3	2.1	--	--	PACE	--	--	--	--
4/7/1994	--	n	40.13	28.50	--	11.63	460	20	7.4	8.9	11	18.2	--	PACE	--	--	--	--
4/7/1994	--	h	40.13	--	--	--	460	20	7.7	9	11	--	--	PACE	--	--	--	--
7/6/1994	--	n	40.13	--	--	--	300	10	0.6	1.7	6.4	5.54	4.8	PACE	--	--	--	--
10/7/1994	--	n	40.13	27.65	--	12.48	620	28	<0.5	2.2	12	31.4	4.4	PACE	--	--	31	--
1/27/1995	--	j	40.13	27.65	--	12.48	--	--	--	--	--	--	--	--	--	--	--	--
3/30/1995	--		40.13	26.05	--	14.08	300	10	6	3.4	18	--	7.6	ATI	--	--	--	--
6/20/1995	--		40.13	19.49	--	20.64	170	7.2	3.4	0.85	15	--	--	ATI	--	--	--	--
10/3/1995	--		40.13	24.93	--	15.20	170	2.1	<0.50	0.81	8	6.7	--	ATI	--	--	--	--
12/6/1995	--	h	40.13	--	--	--	1,400	6.1	3	1.7	190	53	--	ATI	--	--	--	--
12/6/1995	--		40.13	25.14	--	14.99	1,700	6.7	3.1	2.8	210	64	--	ATI	--	--	--	--
3/21/1996	--		40.13	9.48	--	30.65	<50	0.5	<1	<1	1	<10	7.3	SPL	--	--	--	--
6/21/1996	--		40.13	11.60	--	28.53	<50	13	<1	<1	<1	12	7.6	SPL	--	--	--	--
9/6/1996	--		40.13	12.23	--	27.90	--	--	--	--	--	--	--	--	--	--	--	--
9/9/1996	--		40.13	--	--	--	<250	6.5	<5.0	<5.0	<5.0	<50	7.6	SPL	--	--	--	--
12/19/1996	--		40.13	10.46	--	29.67	<50	4.1	<1.0	<1.0	<1.0	<10	8.4	SPL	--	--	--	--
3/17/1997	--		40.13	9.86	--	30.27	50	<5	<1.0	<1.0	<1.0	<10	7.4	SPL	--	--	--	--
8/12/1997	--		40.13	12.11	--	28.02	<50	0.79	<1.0	<1.0	<1.0	10	6.1	SPL	--	--	--	--
12/10/1997	--		40.13	10.90	--	29.23	<50	<0.5	<1.0	<1.0	<1.0	<10	3.2	SPL	--	--	--	--
3/12/1998	--		40.13	10.20	--	29.93	<50	<0.5	<1.0	<1.0	<1.0	<10	6.3	SPL	--	--	--	--
3/12/1998	--	h	40.13	--	--	--	<50	<0.5	<1.0	<1.0	<1.0	<10	--	SPL	--	--	--	--



**Table 1. Summary of Ground-Water Monitoring Data: Relative Water Elevations and Laboratory Analyses**  
**Former BP Station #11109, 4280 Foothill Blvd., Oakland, CA**

Well and Sample Date	P/NP	Footnote	TOC Elevation (feet)	DTW (feet bgs)	Product Thickness (feet)	Water Level Elevation (feet)	Concentrations in (µg/L)						DO (mg/L)	Lab	pH	DRO/TPHd (µg/L)	TOG (µg/L)	HVOC (µg/L)
							GRO/TPHg	Benzene	Toluene	Ethyl-Benzene	Total Xylenes	MtBE						
<b>MW-3 Cont.</b>																		
6/23/1998	--		40.13	10.17	--	29.96	50	<0.5	<1.0	<1.0	<1.0	<10	3.4	SPL	--	--	--	--
3/31/1999	--		40.13	11.45	--	28.68	60	<1.0	<1.0	<1.0	<1.0	6.2	--	SPL	--	--	--	--
8/25/1999	--		40.13	12.52	--	27.61	<50	<1.0	<1.0	<1.0	<1.0	7.7	--	SPL	--	--	--	--
3/9/2000	--		40.13	12.39	--	27.74	<50	<0.5	0.54	<0.5	1.7	6.3	--	PACE	--	--	--	--
3/8/2001	--		40.13	10.41	--	29.72	<50	<0.5	<0.5	<0.5	0.59	7.7	--	PACE	--	--	--	--
3/8/2002	--		40.13	9.83	--	30.30	62	<0.5	<0.5	<0.5	<1.0	11.6	--	PACE	--	--	--	--
3/18/2002	--		40.13	9.20	--	30.93	--	--	--	--	--	--	--	--	--	--	--	--
3/11/2003	--		40.13	10.54	--	29.59	<50	<0.50	<0.50	<0.50	<0.50	6.7	--	SEQ	--	--	--	--
12/09/2003	P		40.13	12.88	--	27.25	<50	<0.50	<0.50	<0.50	<0.50	6.4	--	SEQM	6.3	--	--	--
03/09/2004	P		40.13	9.49	--	30.64	<50	<0.50	<0.50	<0.50	0.63	6.9	--	SEQM	6.1	--	--	--
09/17/2004	--		40.13	12.76	--	27.37	--	--	--	--	--	--	--	--	--	--	--	--
03/07/2005	P		40.13	7.30	--	32.83	<50	<0.50	<0.50	<0.50	0.52	5.1	--	SEQM	7.0	--	--	--
09/06/2005	--		42.92	10.81	--	32.11	--	--	--	--	--	--	--	--	--	--	--	--
03/06/2006	P	u	42.92	8.85	--	34.07	<50	<0.50	<0.50	<0.50	<0.50	6.9	--	SEQM	6.8	--	--	--
9/5/2006	--		42.92	9.86	--	33.06	--	--	--	--	--	--	--	--	--	--	--	--
3/5/2007	P		42.92	8.33	--	34.59	<50	<0.50	<0.50	<0.50	<0.50	5.4	2.31	TAMC	6.95	--	--	--
9/7/2007	--		42.92	11.10	--	31.82	--	--	--	--	--	--	--	--	--	--	--	--
3/6/2008	P		42.92	8.92	--	34.00	<50	<0.50	<0.50	<0.50	<0.50	4.2	2.5	CEL	6.86	--	--	--
9/3/2008	--		42.92	12.19	--	30.73	--	--	--	--	--	--	--	--	--	--	--	--
3/4/2009	P		42.92	8.28	--	34.64	<50	<0.50	<0.50	<0.50	<0.50	4.9	1.19	CEL	6.71	--	--	--
9/30/2009	P	x	40.13	11.60	--	28.53	<50	<0.50	<0.50	<0.50	<0.50	6.8	--	CEL	7.12	--	--	--
10/28/2009	--		40.13	10.40	--	29.73	--	--	--	--	--	--	--	--	--	--	--	--
3/23/2010	P		40.13	8.27	--	31.86	<50	<0.50	<0.50	<0.50	<1.0	3.2	2.47	TAMC	6.61	--	--	--
<b>6/10/2010</b>	<b>--</b>		<b>40.13</b>	<b>9.40</b>	<b>--</b>	<b>30.73</b>	<b>--</b>	<b>--</b>	<b>--</b>	<b>--</b>	<b>--</b>	<b>--</b>	<b>--</b>	<b>--</b>	<b>--</b>	<b>--</b>	<b>--</b>	<b>--</b>
<b>MW-4</b>																		
2/5/1990	--		40.11	20.75	--	19.36	620	<0.5	9	<0.5	10	--	--	SUP	--	--	--	--
2/14/1991	--		40.11	21.73	--	18.38	180	<0.3	<0.3	0.4	2	--	--	SUP	--	--	--	--
5/13/1991	--		40.11	18.55	--	21.56	72	0.7	<0.3	<0.3	<0.3	--	--	SUP	--	--	--	--
7/24/1991	--		40.11	21.31	--	18.80	--	--	--	--	--	--	--	--	--	--	--	--
10/3/1991	--		40.11	22.57	--	17.54	57	<0.3	<0.3	<0.3	<0.3	--	--	SUP	--	--	--	--

**Table 1. Summary of Ground-Water Monitoring Data: Relative Water Elevations and Laboratory Analyses**  
**Former BP Station #11109, 4280 Foothill Blvd., Oakland, CA**

Well and Sample Date	P/NP	Footnote	TOC Elevation (feet)	DTW (feet bgs)	Product Thickness (feet)	Water Level Elevation (feet)	Concentrations in (µg/L)						DO (mg/L)	Lab	pH	DRO/TPHd (µg/L)	TOG (µg/L)	HVOC (µg/L)
							GRO/TPHg	Benzene	Toluene	Ethyl-Benzene	Total Xylenes	MtBE						
<b>MW-4 Cont.</b>																		
10/15/1991	--		40.11	22.88	--	17.23	--	--	--	--	--	--	--	--	--	--	--	--
12/4/1991	--		40.11	22.54	--	17.57	--	--	--	--	--	--	--	--	--	--	--	--
12/16/1991	--		40.11	22.59	--	17.52	--	--	--	--	--	--	--	--	--	--	--	--
1/6/1992	--		40.11	22.00	--	18.11	480	0.8	3.2	1.9	7.7	--	--	ANA	--	--	--	--
1/22/1992	--		40.11	21.58	--	18.53	--	--	--	--	--	--	--	--	--	--	--	--
1/28/1992	--		40.11	21.42	--	18.69	--	--	--	--	--	--	--	--	--	--	--	--
2/5/1992	--		40.11	21.10	--	19.01	--	--	--	--	--	--	--	--	--	--	--	--
2/12/1992	--		40.11	20.74	--	19.37	--	--	--	--	--	--	--	--	--	--	--	--
2/17/1992	--		40.11	19.78	--	20.33	--	--	--	--	--	--	--	--	--	--	--	--
4/3/1992	--		40.11	16.80	--	23.31	--	--	--	--	--	--	--	--	--	--	--	--
4/8/1992	--		40.11	17.13	--	22.98	<50	<0.5	<0.5	<0.5	<0.5	--	--	ANA	--	--	--	--
4/14/1992	--		40.11	17.74	--	22.37	--	--	--	--	--	--	--	--	--	--	--	--
4/29/1992	--		40.11	18.56	--	21.55	--	--	--	--	--	--	--	--	--	--	--	--
5/7/1992	--		40.11	19.10	--	21.01	--	--	--	--	--	--	--	--	--	--	--	--
7/3/1992	--		40.11	20.71	--	19.40	<50	0.6	<0.5	<0.5	<0.5	--	--	ANA	--	--	--	--
10/8/1992	--		40.11	22.43	--	17.68	270	<0.5	2.1	2.5	3.2	--	--	ANA	--	--	--	--
12/31/1992	--		40.11	19.58	--	20.53	150	<0.5	<0.5	<0.5	1.3	--	--	ANA	--	--	--	--
4/21/1993	--	n	40.11	17.79	--	22.32	<50	<0.5	<0.5	<0.5	<0.5	--	--	PACE	--	--	--	--
7/7/1993	--	n	40.11	18.44	--	21.67	160	1.2	5.4	3.8	19	5.51	--	PACE	--	--	--	--
9/21/1993	--	n	40.11	20.14	--	19.97	71	<0.5	1.9	<0.5	2.1	--	--	PACE	--	--	--	--
12/17/1993	--		40.11	19.80	--	20.31	--	--	--	--	--	--	--	--	--	--	--	--
12/23/1993	--	n	40.11	--	--	--	<50	3.1	1.6	0.8	3.8	5.7	--	PACE	--	--	--	--
4/7/1994	--	n	40.11	19.12	--	20.99	<50	<0.5	<0.5	<0.5	<0.5	11.7	6.6	PACE	--	--	--	--
7/6/1994	--	n	40.11	19.90	--	20.21	62	<0.5	<0.5	<0.5	<0.5	--	4.1	PACE	--	--	--	--
10/7/1994	--	n	40.11	20.07	--	20.04	<50	<0.5	<0.5	<0.5	<0.5	7.38	3.6	PACE	--	--	--	--
1/27/1995	--		40.11	13.72	--	26.39	<50	<0.5	<0.5	<0.5	<1	--	2.7	ATI	--	--	--	--
3/30/1995	--		40.11	11.46	--	28.65	<50	<0.50	<0.50	<0.50	<1.0	--	8.3	ATI	--	--	--	--
6/20/1995	--		40.11	14.78	--	25.33	<50	<0.50	<0.50	<0.50	<1.0	--	--	ATI	--	--	--	--
10/3/1995	--		40.11	19.62	--	20.49	<50	<0.50	<0.50	<0.50	<1.0	5	5.8	ATI	--	--	--	--
12/6/1995	--		40.11	19.91	--	20.20	<50	<0.50	<0.50	<0.50	<1.0	47	5.7	ATI	--	--	--	--
3/21/1996	--		40.11	11.12	--	28.99	<50	<0.5	<1	<1	<1	<10	7.8	SPL	--	--	--	--

**Table 1. Summary of Ground-Water Monitoring Data: Relative Water Elevations and Laboratory Analyses**  
**Former BP Station #11109, 4280 Foothill Blvd., Oakland, CA**

Well and Sample Date	P/NP	Footnote	TOC Elevation (feet)	DTW (feet bgs)	Product Thickness (feet)	Water Level Elevation (feet)	Concentrations in (µg/L)						DO (mg/L)	Lab	pH	DRO/TPHd (µg/L)	TOG (µg/L)	HVOC (µg/L)
							GRO/TPHg	Benzene	Toluene	Ethyl-Benzene	Total Xylenes	MtBE						
<b>MW-4 Cont.</b>																		
6/21/1996	--		40.11	12.21	--	27.90	<50	<0.5	<1	<1	<1	<10	7.9	SPL	--	--	--	--
9/6/1996	--		40.11	12.89	--	27.22	--	--	--	--	--	--	--	--	--	--	--	--
9/9/1996	--		40.11	--	--	--	<50	<0.5	<1.0	<1.0	<1.0	<10	7.2	SPL	--	--	--	--
12/19/1996	--		40.11	11.01	--	29.10	<50	<0.5	<1.0	<1.0	<1.0	<10	8.4	SPL	--	--	--	--
3/17/1997	--		40.11	10.42	--	29.69	--	--	--	--	--	--	--	--	--	--	--	--
8/12/1997	--		40.11	12.77	--	27.34	--	--	--	--	--	--	--	--	--	--	--	--
12/10/1997	--		40.11	11.22	--	28.89	--	--	--	--	--	--	--	--	--	--	--	--
3/12/1998	--		40.11	10.81	--	29.30	--	--	--	--	--	--	--	--	--	--	--	--
6/23/1998	--		40.11	10.61	--	29.50	--	--	--	--	--	--	--	--	--	--	--	--
3/31/1999	--		40.11	11.46	--	28.65	--	--	--	--	--	--	--	--	--	--	--	--
8/25/1999	--		40.11	16.16	--	23.95	--	--	--	--	--	--	--	--	--	--	--	--
3/9/2000	--		40.11	12.23	--	27.88	--	--	--	--	--	--	--	--	--	--	--	--
3/8/2001	--		40.11	11.04	--	29.07	--	--	--	--	--	--	--	--	--	--	--	--
3/8/2002	--		40.11	12.73	--	27.38	--	--	--	--	--	--	--	--	--	--	--	--
3/18/2002	--		40.11	11.62	--	28.49	--	--	--	--	--	--	--	--	--	--	--	--
3/11/2003	--		40.11	13.44	--	26.67	--	--	--	--	--	--	--	--	--	--	--	--
12/09/2003	P		40.11	15.03	--	25.08	<250	<2.5	<2.5	<2.5	<2.5	130	--	SEQM	6.1	--	--	--
03/09/2004	P		40.11	11.04	--	29.07	<50	<0.50	<0.50	<0.50	<0.50	35	--	SEQM	5.5	--	--	--
09/17/2004	P		40.11	16.75	--	23.36	<250	<2.5	<2.5	<2.5	<2.5	140	--	SEQM	6.5	--	--	--
03/07/2005	P		40.11	11.02	--	29.09	67	<0.50	<0.50	<0.50	<0.50	42	--	SEQM	6.6	--	--	--
09/06/2005	P	s, t	42.88	14.64	--	28.24	81	<0.50	<0.50	<0.50	<1.5	180	--	SEQM	6.7	--	--	--
03/06/2006	P		42.88	12.42	--	30.46	<100	<1.0	<1.0	<1.0	<1.0	110	--	SEQM	6.4	--	--	--
9/5/2006	--		42.88	13.81	--	29.07	130	<1.0	<1.0	<1.0	<1.0	190	--	TAMC	6.5	--	--	--
3/5/2007	P		42.88	10.63	--	32.25	<50	<0.50	<0.50	<0.50	<0.50	13	3.34	TAMC	7.11	--	--	--
9/7/2007	P	s, v (MTBE)	42.88	14.77	--	28.11	90	<0.50	<0.50	<0.50	<0.50	130	1.14	TAMC	6.68	--	--	--
3/6/2008	P		42.88	11.30	--	31.58	<50	<0.50	<0.50	<0.50	<0.50	170	1.76	CEL	6.62	--	--	--
9/3/2008	P		42.88	16.11	--	26.77	<50	<5.0	<5.0	<5.0	<5.0	150	1.97	CEL	6.33	--	--	--
3/4/2009	P		42.88	10.78	--	32.10	140	<5.0	<5.0	<5.0	<5.0	110	1.31	CEL	6.47	--	--	--
9/30/2009	P	x, y (GRO)	40.10	16.48	--	23.62	240	<2.0	<2.0	<2.0	<2.0	140	0.08	CEL	6.88	--	--	--
10/28/2009	--		40.10	15.07	--	25.03	--	--	--	--	--	--	--	--	--	--	--	--
3/23/2010	P		40.10	10.82	--	29.28	<50	<0.50	<0.50	<0.50	<1.0	84	0.63	TAMC	6.39	--	--	--

**Table 1. Summary of Ground-Water Monitoring Data: Relative Water Elevations and Laboratory Analyses**  
**Former BP Station #11109, 4280 Foothill Blvd., Oakland, CA**

Well and Sample Date	P/NP	Footnote	TOC Elevation (feet)	DTW (feet bgs)	Product Thickness (feet)	Water Level Elevation (feet)	Concentrations in (µg/L)						DO (mg/L)	Lab	pH	DRO/TPHd (µg/L)	TOG (µg/L)	HVOC (µg/L)
							GRO/TPHg	Benzene	Toluene	Ethyl-Benzene	Total Xylenes	MtBE						
<b>MW-4 Cont.</b>																		
6/10/2010	--		40.10	12.67	--	27.43	--	--	--	--	--	--	--	--	--	--	--	--
<b>MW-5</b>																		
10/3/1991	--		39.55	18.08	--	21.47	79,000	13,000	7,400	1,400	6,200	--	--	SUP	--	--	--	--
10/15/1991	--		39.55	18.55	--	21.00	--	--	--	--	--	--	--	--	--	--	--	--
12/4/1991	--	a	39.55	18.44	0.13	20.98	--	--	--	--	--	--	--	--	--	--	--	--
12/16/1991	--	a	39.55	18.66	0.01	20.88	--	--	--	--	--	--	--	--	--	--	--	--
1/6/1992	--	a	39.55	19.12	0.11	20.32	--	--	--	--	--	--	--	--	--	--	--	--
1/22/1992	--		39.55	14.59	--	24.96	--	--	--	--	--	--	--	--	--	--	--	--
1/28/1992	--		39.55	15.25	--	24.30	--	--	--	--	--	--	--	--	--	--	--	--
2/5/1992	--	q	39.55	15.58	--	23.97	--	--	--	--	--	--	--	--	--	--	--	--
2/12/1992	--	a	39.55	15.54	0.01	24.00	--	--	--	--	--	--	--	--	--	--	--	--
2/17/1992	--	q	39.55	13.98	--	25.57	--	--	--	--	--	--	--	--	--	--	--	--
4/3/1992	--	a	39.55	13.63	0.04	25.88	--	--	--	--	--	--	--	--	--	--	--	--
4/8/1992	--	a	39.55	13.17	0.01	26.37	--	--	--	--	--	--	--	--	--	--	--	--
4/14/1992	--	a	39.55	13.45	0.01	26.09	--	--	--	--	--	--	--	--	--	--	--	--
4/29/1992	--	a	39.55	13.75	0.07	25.73	--	--	--	--	--	--	--	--	--	--	--	--
5/7/1992	--	a	39.55	16.15	0.04	23.36	--	--	--	--	--	--	--	--	--	--	--	--
7/3/1992	--	a	39.55	17.67	0.08	21.80	--	--	--	--	--	--	--	--	--	--	--	--
9/1/1992	--	a	39.55	17.83	0.50	21.22	--	--	--	--	--	--	--	--	--	--	--	--
10/8/1992	--	a	39.55	17.86	0.92	20.77	--	--	--	--	--	--	--	--	--	--	--	--
12/31/1992	--	q	39.55	15.20	--	24.35	--	--	--	--	--	--	--	--	--	--	--	--
4/21/1993	--	a	39.55	12.64	0.02	26.89	--	--	--	--	--	--	--	--	--	--	--	--
7/7/1993	--	a, i	39.14	12.68	0.82	25.64	--	--	--	--	--	--	--	--	--	--	--	--
9/21/1993	--	q	39.14	14.35	--	24.79	--	--	--	--	--	--	--	--	--	--	--	--
12/17/1993	--	a	39.14	12.61	0.41	26.12	--	--	--	--	--	--	--	--	--	--	--	--
4/7/1994	--	n	39.14	30.00	--	9.14	66,000	3,000	1,700	250	6,800	2,002	--	PACE	--	--	--	--
7/6/1994	--	n	39.14	--	--	--	29,000	1,900	330	63	2,700	1,141	--	PACE	--	--	--	--
10/7/1994	--	n	39.14	28.70	--	10.44	250,000	2,600	660	830	5,200	37.7	4.2	PACE	--	--	--	--
10/7/1994	--	h	39.14	--	--	--	45,000	2,900	540	260	2,600	--	--	PACE	--	--	--	--
1/27/1995	--		39.14	28.70	--	10.44	--	--	--	--	--	--	--	--	--	--	--	--



**Table 1. Summary of Ground-Water Monitoring Data: Relative Water Elevations and Laboratory Analyses**  
**Former BP Station #11109, 4280 Foothill Blvd., Oakland, CA**

Well and Sample Date	P/NP	Footnote	TOC Elevation (feet)	DTW (feet bgs)	Product Thickness (feet)	Water Level Elevation (feet)	Concentrations in (µg/L)						DO (mg/L)	Lab	pH	DRO/TPHd (µg/L)	TOG (µg/L)	HVOC (µg/L)
							GRO/TPHg	Benzene	Toluene	Ethyl-Benzene	Total Xylenes	MtBE						
<b>MW-5 Cont.</b>																		
3/30/1995	--	h	39.14	--	--	--	43,000	7,900	2,500	440	6,200	--	--	ATI	--	--	--	--
3/30/1995	--		39.14	28.95	--	10.19	50,000	7,900	2,600	520	6,400	--	5.5	ATI	--	--	--	--
6/20/1995	--	h	39.14	--	--	--	26,000	3,500	290	<25	3,300	--	--	ATI	--	--	--	--
6/20/1995	--		39.14	22.54	--	16.60	34,000	5,100	1,900	300	3,700	--	--	ATI	--	--	--	--
10/3/1995	--	h	39.14	--	--	--	12,000	46	39	10	1,600	320	--	ATI	--	--	--	--
10/3/1995	--		39.14	18.84	--	20.30	12,000	68	42	11	1,600	330	--	ATI	--	--	--	--
12/6/1995	--		39.14	19.07	--	20.07	16,000	1,200	93	51	700	600	--	ATI	--	--	--	--
3/21/1996	--		39.14	7.43	--	31.71	1,500	89	28	6	250	<10	7.2	SPL	--	--	--	--
3/21/1996	--	h	39.14	--	--	--	1,900	92	30	7	270	<10	--	SPL	--	--	--	--
6/21/1996	--		39.14	9.87	--	29.27	3,500	740	150	19	400	<100	7.1	SPL	--	--	--	--
6/21/1996	--	h	39.14	--	--	--	2,700	680	140	20	400	<50	--	SPL	--	--	--	--
9/6/1996	--		39.14	10.52	--	28.62	--	--	--	--	--	--	--	--	--	--	--	--
9/9/1996	--	h	39.14	--	--	--	90,000	2,900	1,600	670	6,900	<2500	--	SPL	--	--	--	--
9/9/1996	--		39.14	--	--	--	82,000	3,100	1,700	850	9,100	<2500	7.5	SPL	--	--	--	--
12/19/1996	--		39.14	8.62	--	30.52	41,000	790	820	120	2,040	<500	7.7	SPL	--	--	--	--
12/19/1996	--	h	39.14	--	--	--	26,000	490	430	63	1,140	<500	--	SPL	--	--	--	--
3/17/1997	--		39.14	8.22	--	30.92	5,500	1.9	2.4	<1.0	<1.0	29	6.4	SPL	--	--	--	--
3/17/1997	--	h	39.14	--	--	--	6,600	2.5	2.7	<1.0	<1.0	28	--	SPL	--	--	--	--
8/12/1997	--	a	39.14	12.18	0.22	26.74	33,000	6,400	2,400	680	4,400	<1000	6.8	SPL	--	--	--	--
8/12/1997	--	h	39.14	--	--	--	36,000	6,100	2,500	720	4,500	<500	--	SPL	--	--	--	--
12/10/1997	--	h	39.14	--	--	--	37,000	2,900	2,500	440	4,800	--	--	SPL	--	--	--	--
12/10/1997	--	a	39.14	10.78	0.06	28.30	31,000	3,000	2,500	560	5,100	500	1.8	SPL	--	--	--	--
3/12/1998	--	a	39.14	10.11	0.22	28.81	100,000	1,600	870	250	2,600	<250	6.1	SPL	--	--	--	--
6/23/1998	--	h	39.14	--	--	--	27,000	2,600	840	400	2,950	<500	--	SPL	--	--	--	--
6/23/1998	--	a	39.14	10.20	0.02	28.92	27,000	2,500	840	370	2,900	<250	2.1	SPL	--	--	--	--
3/31/1999	--	f	39.14	--	--	--	--	--	--	--	--	--	--	--	--	--	--	--
8/25/1999	--	a	39.14	14.69	0.38	24.07	180,000	2,700	400	830	2,800	26	--	SPL	--	--	--	--
3/9/2000	--	a	39.14	14.83	0.60	23.71	53,000	12,000	2,600	1,900	9,100	<5.0	--	PACE	--	--	--	--
3/8/2001	--	f	39.14	--	--	--	--	--	--	--	--	--	--	--	--	--	--	--
3/8/2002	--	a	39.14	11.45	1.50	26.19	33,000	8,240	1,080	1,010	2,900	34.3	--	PACE	--	--	--	--
3/18/2002	--		39.14	8.03	--	31.11	--	--	--	--	--	--	--	--	--	--	--	--

**Table 1. Summary of Ground-Water Monitoring Data: Relative Water Elevations and Laboratory Analyses**  
**Former BP Station #11109, 4280 Foothill Blvd., Oakland, CA**

Well and Sample Date	P/NP	Footnote	TOC Elevation (feet)	DTW (feet bgs)	Product Thickness (feet)	Water Level Elevation (feet)	Concentrations in (µg/L)						DO (mg/L)	Lab	pH	DRO/TPHd (µg/L)	TOG (µg/L)	HVOC (µg/L)
							GRO/TPHg	Benzene	Toluene	Ethyl-Benzene	Total Xylenes	MtBE						
<b>MW-5 Cont.</b>																		
3/11/2003	--	a	39.14	9.60	0.45	29.09	--	--	--	--	--	--	--	--	--	--	--	--
12/09/2003	--	a	39.14	11.44	0.03	27.72	--	--	--	--	--	--	--	--	--	--	--	--
03/09/2004	P		39.14	7.91	--	31.23	31,000	3,900	1,100	780	3,600	<50	--	SEQM	6.6	--	--	--
09/17/2004	--	a	39.14	12.13	0.15	27.13	--	--	--	--	--	--	--	--	--	--	--	--
03/07/2005	--	a	39.14	8.62	0.02	27.13	--	--	--	--	--	--	--	--	--	--	--	--
09/06/2005	--	a	41.98	11.16	0.18	30.96	--	--	--	--	--	--	--	--	--	--	--	--
03/06/2006	P	a, q	41.98	8.60	SHEEN	33.38	32,000	7,500	810	1,200	2,300	<50	--	SEQM	6.4	--	--	--
9/5/2006	--	a	41.98	6.16	0.03	35.82	--	--	--	--	--	--	--	--	--	--	--	--
3/5/2007	P	q	41.98	8.34	SHEEN	33.64	90,000	10,000	4,200	1,900	7,900	<50	1.30	TAMC	6.91	--	--	--
9/7/2007	--	a	41.98	15.15	0.15	26.94	--	--	--	--	--	--	--	--	--	--	--	--
1/14/2008	--	a	41.98	10.30	0.49	32.05	--	--	--	--	--	--	--	--	--	--	--	--
2/27/2008	--	a	41.98	13.22	0.12	28.85	--	--	--	--	--	--	--	--	--	--	--	--
3/6/2008	--	a	41.98	12.90	0.14	29.19	--	--	--	--	--	--	--	--	--	--	--	--
9/3/2008	--	a	41.98	12.90	0.99	29.82	--	--	--	--	--	--	--	--	--	--	--	--
3/4/2009	--	a	41.98	8.45	0.16	33.65	--	--	--	--	--	--	--	--	--	--	--	--
4/8/2009	--	x	39.14	9.05	0.67	30.59	--	--	--	--	--	--	--	--	--	--	--	--
5/11/2009	--		39.14	9.10	0.32	30.28	--	--	--	--	--	--	--	--	--	--	--	--
6/16/2009	--		39.14	9.15	0.02	30.01	--	--	--	--	--	--	--	--	--	--	--	--
7/22/2009	--		39.14	9.33	0.12	29.90	--	--	--	--	--	--	--	--	--	--	--	--
8/6/2009	--		39.14	10.05	0.01	29.10	--	--	--	--	--	--	--	--	--	--	--	--
9/30/2009	--		39.14	10.55	0.06	28.64	--	--	--	--	--	--	--	--	--	--	--	--
10/28/2009	--		39.14	10.48	--	28.66	--	--	--	--	--	--	--	--	--	--	--	--
3/23/2010	P		39.14	7.10	--	32.04	71,000	1,400	380	620	1,800	<5.0	--	TAMC	6.50	--	--	--
<b>6/10/2010</b>	<b>--</b>		<b>39.14</b>	<b>8.26</b>	<b>0.06</b>	<b>30.93</b>	<b>--</b>	<b>--</b>	<b>--</b>	<b>--</b>	<b>--</b>	<b>--</b>	<b>--</b>	<b>--</b>	<b>--</b>	<b>--</b>	<b>--</b>	<b>--</b>
<b>MW-6</b>																		
10/3/1991	--		41.59	20.73	--	20.86	<50	0.7	0.8	<0.3	1.3	--	--	SUP	--	--	--	--
10/15/1991	--		41.59	21.20	--	20.39	--	--	--	--	--	--	--	--	--	--	--	--
12/4/1991	--		41.59	21.26	--	20.33	--	--	--	--	--	--	--	--	--	--	--	--
12/16/1991	--		41.59	21.12	--	20.47	--	--	--	--	--	--	--	--	--	--	--	--
1/6/1992	--		41.59	20.29	--	21.30	<50	<0.5	<0.5	<0.5	1.6	--	--	ANA	--	--	--	--

**Table 1. Summary of Ground-Water Monitoring Data: Relative Water Elevations and Laboratory Analyses**  
**Former BP Station #11109, 4280 Foothill Blvd., Oakland, CA**

Well and Sample Date	P/NP	Footnote	TOC Elevation (feet)	DTW (feet bgs)	Product Thickness (feet)	Water Level Elevation (feet)	Concentrations in (µg/L)						DO (mg/L)	Lab	pH	DRO/TPHd (µg/L)	TOG (µg/L)	HVOC (µg/L)
							GRO/TPHg	Benzene	Toluene	Ethyl-Benzene	Total Xylenes	MtBE						
<b>MW-6 Cont.</b>																		
1/22/1992	--		41.59	20.12	--	21.47	--	--	--	--	--	--	--	--	--	--	--	--
1/28/1992	--		41.59	20.20	--	21.39	--	--	--	--	--	--	--	--	--	--	--	--
2/5/1992	--		41.59	20.09	--	21.50	--	--	--	--	--	--	--	--	--	--	--	--
2/12/1992	--		41.59	19.15	--	22.44	--	--	--	--	--	--	--	--	--	--	--	--
2/17/1992	--		41.59	18.02	--	23.57	--	--	--	--	--	--	--	--	--	--	--	--
4/3/1992	--		41.59	16.62	--	24.97	--	--	--	--	--	--	--	--	--	--	--	--
4/8/1992	--		41.59	17.06	--	24.53	<50	0.6	<0.5	0.8	<0.5	--	--	ANA	--	--	--	--
4/14/1992	--		41.59	17.23	--	24.36	--	--	--	--	--	--	--	--	--	--	--	--
4/29/1992	--		41.59	18.12	--	23.47	--	--	--	--	--	--	--	--	--	--	--	--
5/7/1992	--		41.59	18.52	--	23.07	--	--	--	--	--	--	--	--	--	--	--	--
7/3/1992	--		41.59	19.71	--	21.88	<50	<0.5	<0.5	<0.5	<0.5	--	--	ANA	--	--	--	--
10/8/1992	--		41.59	21.22	--	20.37	<50	<0.5	<0.5	<0.5	<0.5	--	--	ANA	--	--	--	--
10/8/1992	--	h	41.59	--	--	--	<50	<0.5	<0.5	<0.5	<0.5	--	--	ANA	--	--	--	--
12/31/1992	--		41.59	21.33	--	20.26	<50	<0.5	<0.5	<0.5	<0.5	--	--	ANA	--	--	--	--
4/21/1993	--	n	41.59	16.45	--	25.14	<50	<0.5	<0.5	<0.5	<0.5	--	--	PACE	--	--	--	--
7/7/1993	--	j, n	41.59	18.68	--	22.91	<50	<0.5	<0.5	<0.5	<0.5	28.96	--	PACE	--	--	29	--
9/21/1993	--	n	41.59	19.64	--	21.95	<50	<0.5	<0.5	<0.5	1.6	--	--	PACE	--	--	--	--
12/17/1993	--		41.59	21.08	--	20.51	--	--	--	--	--	--	--	--	--	--	--	--
12/23/1993	--	n	41.59	--	--	--	<50	<0.5	0.5	<0.5	0.6	13.95	--	PACE	--	--	--	--
4/7/1994	--	n	41.59	21.27	--	20.32	<50	<0.5	<0.5	<0.5	<0.5	35.1	6.1	PACE	--	--	--	--
7/6/1994	--	n	41.59	19.81	--	21.78	<50	<0.5	<0.5	<0.5	<0.5	--	4.0	PACE	--	--	--	--
7/6/1994	--	h	41.59	--	--	--	<50	<0.5	<0.5	<0.5	<0.5	--	--	PACE	--	--	--	--
10/7/1994	--	j, n	41.59	21.25	--	20.34	<50	<0.5	<0.5	<0.5	<0.5	24.3	3.5	PACE	--	--	24	--
1/27/1995	--		41.59	12.39	--	29.20	<50	<0.5	<0.5	<0.5	<1	--	4.2	ATI	--	--	--	--
3/30/1995	--		41.59	11.34	--	30.25	<50	<0.50	<0.50	<0.50	<1.0	--	6.1	ATI	--	--	--	--
6/20/1995	--		41.59	15.12	--	26.47	<50	<0.50	<0.50	<0.50	<1.0	--	--	ATI	--	--	--	--
10/3/1995	--		41.59	20.68	--	20.91	<50	<0.50	<0.50	<0.50	<1.0	66	6.4	ATI	--	--	--	--
12/6/1995	--		41.59	23.77	--	17.82	<50	<0.50	<0.50	<0.50	<1.0	45	5.7	ATI	--	--	--	--
3/21/1996	--		41.59	11.55	--	30.04	<50	<0.5	<1	<1	<1	41	9.1	SPL	--	--	--	--
6/21/1996	--		41.59	12.60	--	28.99	<50	<0.5	<1	<1	<1	<10	8.6	SPL	--	--	--	--
9/6/1996	--		41.59	13.25	--	28.34	--	--	--	--	--	--	--	--	--	--	--	--

**Table 1. Summary of Ground-Water Monitoring Data: Relative Water Elevations and Laboratory Analyses**  
**Former BP Station #11109, 4280 Foothill Blvd., Oakland, CA**

Well and Sample Date	P/NP	Footnote	TOC Elevation (feet)	DTW (feet bgs)	Product Thickness (feet)	Water Level Elevation (feet)	Concentrations in (µg/L)						DO (mg/L)	Lab	pH	DRO/TPHd (µg/L)	TOG (µg/L)	HVOC (µg/L)
							GRO/TPHg	Benzene	Toluene	Ethyl-Benzene	Total Xylenes	MtBE						
<b>MW-6 Cont.</b>																		
9/9/1996	--	k	41.59	--	--	--	<50	<0.5	<1.0	<1.0	<1.0	22/22	7.9	SPL	--	--	--	--
12/19/1996	--		41.59	11.45	--	30.14	<50	<0.5	<1.0	<1.0	<1.0	<10	7.7	SPL	--	--	--	--
3/17/1997	--		41.59	10.80	--	30.79	--	--	--	--	--	--	--	--	--	--	--	--
8/12/1997	--		41.59	13.11	--	28.48	--	--	--	--	--	--	--	--	--	--	--	--
12/10/1997	--		41.59	13.84	--	27.75	--	--	--	--	--	--	--	--	--	--	--	--
3/12/1998	--		41.59	11.17	--	30.42	--	--	--	--	--	--	--	--	--	--	--	--
6/23/1998	--		41.59	13.27	--	28.32	--	--	--	--	--	--	--	--	--	--	--	--
3/31/1999	--		41.59	12.91	--	28.68	--	--	--	--	--	--	--	--	--	--	--	--
8/25/1999	--		41.59	15.93	--	25.66	--	--	--	--	--	--	--	--	--	--	--	--
3/9/2000	--		41.59	11.49	--	30.10	--	--	--	--	--	--	--	--	--	--	--	--
3/8/2001	--		41.59	10.81	--	30.78	--	--	--	--	--	--	--	--	--	--	--	--
3/8/2002	--		41.59	14.28	--	27.31	--	--	--	--	--	--	--	--	--	--	--	--
3/18/2002	--		41.59	13.10	--	28.49	--	--	--	--	--	--	--	--	--	--	--	--
3/11/2003	--		41.59	13.63	--	27.96	--	--	--	--	--	--	--	--	--	--	--	--
12/09/2003	P		41.59	14.26	--	27.33	<50	<0.50	<0.50	<0.50	<0.50	12	--	SEQM	6.4	--	--	--
03/09/2004	NP		41.59	11.87	--	29.72	<50	<0.50	<0.50	<0.50	<0.50	10	--	SEQM	7.1	--	--	--
09/17/2004	--		41.59	16.45	--	25.14	--	--	--	--	--	--	--	--	--	--	--	--
03/07/2005	P		41.59	13.65	--	27.94	<50	<0.50	<0.50	<0.50	<0.50	5.8	--	SEQM	6.7	--	--	--
09/06/2005	--		44.37	14.23	--	30.14	--	--	--	--	--	--	--	--	--	--	--	--
03/06/2006	P	u	44.37	12.89	--	31.48	<50	<0.50	<0.50	<0.50	<0.50	8.1	--	SEQM	6.8	--	--	--
9/5/2006	--		44.37	14.10	--	30.27	--	--	--	--	--	--	--	--	--	--	--	--
3/5/2007	P		44.37	11.43	--	32.94	<50	<0.50	<0.50	<0.50	<0.50	5.6	2.57	TAMC	7.70	--	--	--
9/7/2007	--		44.37	16.00	--	28.37	--	--	--	--	--	--	--	--	--	--	--	--
3/6/2008	P		44.37	11.84	--	32.53	<50	<0.50	<0.50	<0.50	<0.50	1.9	2.34	CEL	6.81	--	--	--
9/3/2008	--		44.37	16.24	--	28.13	--	--	--	--	--	--	--	--	--	--	--	--
3/4/2009	P		44.37	11.68	--	32.69	<50	<0.50	<0.50	<0.50	<0.50	2.8	4.66	CEL	6.82	--	--	--
9/30/2009	P	x	41.58	16.83	--	24.75	<50	<0.50	<0.50	<0.50	<0.50	4.4	0.10	CEL	7.00	--	--	--
10/28/2009	--		41.58	15.63	--	25.95	--	--	--	--	--	--	--	--	--	--	--	--
3/23/2010	P		41.58	11.48	--	30.10	<50	<0.50	<0.50	<0.50	<1.0	1.0	--	TAMC	6.57	--	--	--
<b>6/10/2010</b>	<b>--</b>		<b>41.58</b>	<b>12.54</b>	<b>--</b>	<b>29.04</b>	<b>--</b>	<b>--</b>	<b>--</b>	<b>--</b>	<b>--</b>	<b>--</b>	<b>--</b>	<b>--</b>	<b>--</b>	<b>--</b>	<b>--</b>	<b>--</b>



**Table 1. Summary of Ground-Water Monitoring Data: Relative Water Elevations and Laboratory Analyses**  
**Former BP Station #11109, 4280 Foothill Blvd., Oakland, CA**

Well and Sample Date	P/NP	Footnote	TOC Elevation (feet)	DTW (feet bgs)	Product Thickness (feet)	Water Level Elevation (feet)	Concentrations in (µg/L)						DO (mg/L)	Lab	pH	DRO/TPHd (µg/L)	TOG (µg/L)	HVOC (µg/L)
							GRO/TPHg	Benzene	Toluene	Ethyl-Benzene	Total Xylenes	MtBE						
<b>MW-7</b>																		
10/3/1991	--		40.64	14.93	--	25.71	360	62	13	3.4	20	--	--	SUP	--	--	--	--
10/15/1991	--		40.64	15.16	--	25.48	--	--	--	--	--	--	--	--	--	--	--	--
12/4/1991	--		40.64	15.41	--	25.23	--	--	--	--	--	--	--	--	--	--	--	--
12/16/1991	--		40.64	15.21	--	25.43	--	--	--	--	--	--	--	--	--	--	--	--
1/6/1992	--		40.64	14.56	--	26.08	1,100	170	<0.5	24	23	--	--	ANA	--	--	--	--
1/22/1992	--		40.64	14.63	--	26.01	--	--	--	--	--	--	--	--	--	--	--	--
1/28/1992	--		40.64	14.73	--	25.91	--	--	--	--	--	--	--	--	--	--	--	--
2/5/1992	--		40.64	14.58	--	26.06	--	--	--	--	--	--	--	--	--	--	--	--
2/12/1992	--		40.64	13.94	--	26.70	--	--	--	--	--	--	--	--	--	--	--	--
2/17/1992	--		40.64	13.10	--	27.54	--	--	--	--	--	--	--	--	--	--	--	--
4/3/1992	--		40.64	12.66	--	27.98	--	--	--	--	--	--	--	--	--	--	--	--
4/8/1992	--		40.64	12.77	--	27.87	750	150	<0.5	23	9.9	--	--	ANA	--	--	--	--
4/14/1992	--		40.64	13.02	--	27.62	--	--	--	--	--	--	--	--	--	--	--	--
4/29/1992	--		40.64	13.59	--	27.05	--	--	--	--	--	--	--	--	--	--	--	--
5/7/1992	--		40.64	13.95	--	26.69	--	--	--	--	--	--	--	--	--	--	--	--
7/3/1992	--		40.64	14.73	--	25.91	660	210	<2.5	33	8	--	--	ANA	--	--	--	--
10/8/1992	--		40.64	15.75	--	24.89	320	49	1.4	13	6.2	--	--	ANA	--	--	--	--
12/31/1992	--		40.64	13.57	--	27.07	900	100	<2.5	28	4.3	--	--	ANA	--	--	--	--
4/21/1993	--	n	40.64	14.56	--	26.08	510	83	1.2	10	5.8	--	--	PACE	--	--	--	--
7/7/1993	--	h, n	40.32	--	--	--	1,100	170	1.9	29	2.84	9.84	--	PACE	--	--	--	--
7/7/1993	--	i, n	40.32	13.40	--	26.92	1,100	160	2	27	4	10.84	--	PACE	--	--	--	--
9/21/1993	--	h, n	40.32	--	--	--	640	140	1.7	23	2.4	--	--	PACE	--	--	--	--
9/21/1993	--	n	40.32	14.40	--	25.92	690	150	3.1	26	5.7	--	--	PACE	--	--	--	--
12/17/1993	--		40.32	13.65	--	26.67	--	--	--	--	--	--	--	--	--	--	--	--
12/23/1993	--	n	40.32	--	--	--	250	64	1.2	9	1.8	7.81	--	PACE	--	--	--	--
4/7/1994	--	n	40.32	30.62	--	9.70	140	32	1.4	<0.5	<0.5	6.32	--	PACE	--	--	--	--
7/6/1994	--	n	40.32	16.88	--	23.44	410	94	1.3	10	3.5	<5.0	4.4	PACE	--	--	--	--
10/7/1994	--	n	40.32	25.59	--	14.73	<50	9.2	<0.5	<0.5	<0.5	<5.0	4.9	PACE	--	--	--	--
1/27/1995	--		40.32	9.82	--	30.50	810	570	3	60	17	--	0.0	ATI	--	--	--	--
1/27/1995	--	h	40.32	--	--	--	930	620	4	77	21	--	--	ATI	--	--	--	--
3/30/1995	--		40.32	9.15	--	31.17	180	65	0.53	2	<1.0	--	7.8	ATI	--	--	--	--

**Table 1. Summary of Ground-Water Monitoring Data: Relative Water Elevations and Laboratory Analyses**  
**Former BP Station #11109, 4280 Foothill Blvd., Oakland, CA**

Well and Sample Date	P/NP	Footnote	TOC Elevation (feet)	DTW (feet bgs)	Product Thickness (feet)	Water Level Elevation (feet)	Concentrations in (µg/L)						DO (mg/L)	Lab	pH	DRO/TPHd (µg/L)	TOG (µg/L)	HVOC (µg/L)
							GRO/TPHg	Benzene	Toluene	Ethyl-Benzene	Total Xylenes	MtBE						
<b>MW-7 Cont.</b>																		
6/20/1995	--		40.32	11.38	--	28.94	2,800	980	<5.0	<5.0	43	--	--	ATI	--	--	--	--
10/3/1995	--		40.32	29.95	--	10.37	<50	<0.50	<0.50	<0.50	<1.0	<5.0	--	ATI	--	--	--	--
12/6/1995	--		40.32	29.85	--	10.47	<50	<0.50	<0.50	<0.50	<1.0	<5.0	--	ATI	--	--	--	--
3/21/1996	--		40.32	9.76	--	30.56	1,000	390	2	40	13	<10	7.4	SPL	--	--	--	--
6/21/1996	--		40.32	11.01	--	29.31	<250	40	<5	<5	<5	<50	7.4	SPL	--	--	--	--
9/6/1996	--		40.32	11.68	--	28.64	--	--	--	--	--	--	--	--	--	--	--	--
9/9/1996	--		40.32	--	--	--	<250	13	<5.0	<5.0	<5.0	<50	7.2	SPL	--	--	--	--
12/19/1996	--		40.32	10.78	--	29.54	70	1.2	<1.0	1	<1.0	<10	8.3	SPL	--	--	--	--
3/17/1997	--		40.32	9.96	--	30.36	--	--	--	--	--	--	--	--	--	--	--	--
8/12/1997	--		40.32	11.44	--	28.88	--	--	--	--	--	--	--	--	--	--	--	--
12/10/1997	--		40.32	10.42	--	29.90	--	--	--	--	--	--	--	--	--	--	--	--
3/12/1998	--		40.32	9.51	--	30.81	--	--	--	--	--	--	--	--	--	--	--	--
6/23/1998	--		40.32	9.98	--	30.34	--	--	--	--	--	--	--	--	--	--	--	--
3/31/1999	--		40.32	10.38	--	29.94	--	--	--	--	--	--	--	--	--	--	--	--
8/25/1999	--		40.32	12.38	--	27.94	--	--	--	--	--	--	--	--	--	--	--	--
3/9/2000	--		40.32	8.48	--	31.84	--	--	--	--	--	--	--	--	--	--	--	--
3/8/2001	--		40.32	8.37	--	31.95	--	--	--	--	--	--	--	--	--	--	--	--
3/8/2002	--	f	40.32	--	--	--	--	--	--	--	--	--	--	--	--	--	--	--
3/18/2002	--		40.32	9.94	--	30.38	--	--	--	--	--	--	--	--	--	--	--	--
3/11/2003	--		40.32	11.26	--	29.06	--	--	--	--	--	--	--	--	--	--	--	--
12/09/2003	P		40.32	12.76	--	27.56	270	26	<0.50	<0.50	<0.50	8.7	--	SEQM	6.1	--	--	--
03/09/2004	P		40.32	10.91	--	29.41	320	49	0.73	1.8	0.59	6.9	--	SEQM	6.2	--	--	--
09/17/2004	P		40.32	13.20	--	27.12	330	17	<0.50	<0.50	<0.50	7.0	--	SEQM	6.6	--	--	--
03/07/2005	P		40.32	8.18	--	32.14	340	41	0.79	0.79	0.73	7.2	--	SEQM	6.9	--	--	--
09/06/2005	P		43.10	11.80	--	31.30	1,100	130	1.2	1.8	<1.5	16	--	SEQM	6.7	--	--	--
03/06/2006	P		43.10	8.39	--	34.71	440	31	0.78	0.74	0.81	8.3	--	SEQM	7.1	--	--	--
9/5/2006	--		43.10	11.45	--	31.65	2,000	260	3.1	5.9	<2.5	12	--	TAMC	6.6	--	--	--
3/5/2007	P		43.10	9.31	--	33.79	2,200	110	2.2	4.0	1.8	7.6	1.06	TAMC	7.26	--	--	--
9/7/2007	P		43.10	12.18	--	30.92	220	8.4	<0.50	<0.50	<0.50	1.2	0.98	TAMC	6.89	--	--	--
3/6/2008	P		43.10	10.05	--	33.05	1,800	54	1.2	1.1	<1.0	<1.0	--	CEL	7.02	--	--	--
9/3/2008	P		43.10	13.17	--	29.93	540	13	0.69	<0.50	<0.50	5.5	4.77	CEL	6.88	--	--	--

**Table 1. Summary of Ground-Water Monitoring Data: Relative Water Elevations and Laboratory Analyses**  
**Former BP Station #11109, 4280 Foothill Blvd., Oakland, CA**

Well and Sample Date	P/NP	Footnote	TOC Elevation (feet)	DTW (feet bgs)	Product Thickness (feet)	Water Level Elevation (feet)	Concentrations in (µg/L)						DO (mg/L)	Lab	pH	DRO/TPHd (µg/L)	TOG (µg/L)	HVOC (µg/L)
							GRO/TPHg	Benzene	Toluene	Ethyl-Benzene	Total Xylenes	MtBE						
<b>MW-7 Cont.</b>																		
3/4/2009	P		43.10	8.25	--	34.85	720	15	0.59	0.53	<0.50	3.4	1.29	CEL	6.93	--	--	--
9/30/2009	P	x	40.40	12.70	--	27.70	1,200	44	1.0	0.74	0.79	3.3	0.11	CEL	6.94	--	--	--
10/28/2009	--		40.40	11.17	--	29.23	--	--	--	--	--	--	--	--	--	--	--	--
3/23/2010	P		40.40	9.28	--	31.12	480	11	<0.50	<0.50	<1.0	<0.50	0.38	TAMC	6.57	--	--	--
<b>6/10/2010</b>	<b>--</b>		<b>40.40</b>	<b>10.24</b>	<b>--</b>	<b>30.16</b>	<b>--</b>	<b>--</b>	<b>--</b>	<b>--</b>	<b>--</b>	<b>--</b>	<b>--</b>	<b>--</b>	<b>--</b>	<b>--</b>	<b>--</b>	<b>--</b>
<b>MW-8</b>																		
10/3/1991	--		38.18	22.37	--	15.81	<50	<0.3	0.6	<0.3	0.9	--	--	SUP	--	--	--	--
10/15/1991	--		38.18	22.70	--	15.48	--	--	--	--	--	--	--	--	--	--	--	--
12/4/1991	--		38.18	22.44	--	15.74	--	--	--	--	--	--	--	--	--	--	--	--
12/16/1991	--		38.18	22.47	--	15.71	--	--	--	--	--	--	--	--	--	--	--	--
1/6/1992	--		38.18	21.94	--	16.24	<50	<0.5	<0.5	<0.5	<0.5	--	--	ANA	--	--	--	--
1/22/1992	--		38.18	21.44	--	16.74	--	--	--	--	--	--	--	--	--	--	--	--
1/28/1992	--		38.18	21.20	--	16.98	--	--	--	--	--	--	--	--	--	--	--	--
2/5/1992	--		38.18	20.88	--	17.30	--	--	--	--	--	--	--	--	--	--	--	--
2/12/1992	--		38.18	20.54	--	17.64	--	--	--	--	--	--	--	--	--	--	--	--
2/17/1992	--		38.18	19.99	--	18.19	--	--	--	--	--	--	--	--	--	--	--	--
4/3/1992	--		38.18	16.75	--	21.43	--	--	--	--	--	--	--	--	--	--	--	--
4/8/1992	--		38.18	16.57	--	21.61	<50	<0.5	<0.5	<0.5	<0.5	--	--	ANA	--	--	--	--
4/14/1992	--	f	38.18	--	--	--	--	--	--	--	--	--	--	--	--	--	--	--
4/29/1992	--		38.18	18.61	--	19.57	--	--	--	--	--	--	--	--	--	--	--	--
5/7/1992	--		38.18	18.41	--	19.77	--	--	--	--	--	--	--	--	--	--	--	--
7/3/1992	--		38.18	20.35	--	17.83	<50	<0.5	<0.5	<0.5	<0.5	--	--	ANA	--	--	--	--
10/8/1992	--	f	38.18	21.74	--	16.44	--	--	--	--	--	--	--	--	--	--	--	--
12/31/1992	--		38.18	19.09	--	19.09	<50	<0.5	<0.5	<0.5	<0.5	--	--	ANA	--	--	--	--
4/21/1993	--	n	38.18	18.92	--	19.26	<50	<0.5	<0.5	<0.5	<0.5	--	--	PACE	--	--	--	--
7/7/1993	--	n	38.18	17.76	--	20.42	<50	<0.5	<0.5	<0.5	<0.5	<5.0	--	PACE	--	--	--	--
9/21/1993	--	n	38.18	19.71	--	18.47	<50	2.9	2.2	2.2	7.1	--	--	PACE	--	--	--	--
12/17/1993	--		38.18	21.33	--	16.85	--	--	--	--	--	--	--	--	--	--	--	--
12/23/1993	--	n	38.18	--	--	--	<50	<0.5	<0.5	<0.5	0.6	<5.0	--	PACE	--	--	--	--
4/7/1994	--	n	38.18	21.51	--	16.67	<50	<0.5	<0.5	<0.5	<0.5	<5.0	6.6	PACE	--	--	--	--

**Table 1. Summary of Ground-Water Monitoring Data: Relative Water Elevations and Laboratory Analyses**  
**Former BP Station #11109, 4280 Foothill Blvd., Oakland, CA**

Well and Sample Date	P/NP	Footnote	TOC Elevation (feet)	DTW (feet bgs)	Product Thickness (feet)	Water Level Elevation (feet)	Concentrations in (µg/L)						DO (mg/L)	Lab	pH	DRO/TPHd (µg/L)	TOG (µg/L)	HVOC (µg/L)
							GRO/TPHg	Benzene	Toluene	Ethyl-Benzene	Total Xylenes	MtBE						
<b>MW-8 Cont.</b>																		
7/6/1994	--	n	38.18	17.41	--	20.77	<50	<0.5	<0.5	<0.5	<0.5	<5.0	4.4	PACE	--	--	--	--
10/7/1994	--	n	38.18	19.20	--	18.98	<50	<0.5	<0.5	<0.5	<0.5	<5.0	3.7	PACE	--	--	--	--
1/27/1995	--		38.18	12.25	--	25.93	<50	<0.5	<0.5	<0.5	<1	--	2.9	ATI	--	--	--	--
3/30/1995	--		38.18	10.35	--	27.83	<50	<0.50	<0.50	<0.50	<1.0	--	8.3	ATI	--	--	--	--
6/20/1995	--		38.18	13.37	--	24.81	<50	<0.50	<0.50	<0.50	<1.0	--	6.9	ATI	--	--	--	--
10/3/1995	--	f	38.18	--	--	--	--	--	--	--	--	--	--	--	--	--	--	--
12/6/1995	--		38.18	18.42	--	19.76	<50	<0.50	<0.50	<0.50	<1.0	47	5.3	ATI	--	--	--	--
3/21/1996	--	f	38.18	--	--	--	--	--	--	--	--	--	--	--	--	--	--	--
6/21/1996	--		38.18	13.03	--	25.15	<50	<0.5	<1	<1	<1	<10	7.0	SPL	--	--	--	--
9/6/1996	--		38.18	13.70	--	24.48	--	--	--	--	--	--	--	--	--	--	--	--
9/9/1996	--		38.18	--	--	--	<50	<0.5	<1.0	<1.0	<1.0	<10	7.0	SPL	--	--	--	--
12/19/1996	--		38.18	11.93	--	26.25	<50	<0.5	<1.0	<1.0	<1.0	<10	7.6	SPL	--	--	--	--
3/17/1997	--		38.18	11.29	--	26.89	--	--	--	--	--	--	--	--	--	--	--	--
8/12/1997	--		38.18	13.73	--	24.45	--	--	--	--	--	--	--	--	--	--	--	--
12/10/1997	--		38.18	11.88	--	26.30	--	--	--	--	--	--	--	--	--	--	--	--
3/12/1998	--		38.18	11.89	--	26.29	--	--	--	--	--	--	--	--	--	--	--	--
6/23/1998	--		38.18	11.33	--	26.85	--	--	--	--	--	--	--	--	--	--	--	--
3/31/1999	--		38.18	12.68	--	25.50	--	--	--	--	--	--	--	--	--	--	--	--
8/25/1999	--		38.18	14.93	--	23.25	--	--	--	--	--	--	--	--	--	--	--	--
3/9/2000	--		38.18	9.14	--	29.04	--	--	--	--	--	--	--	--	--	--	--	--
3/8/2001	--		38.18	8.41	--	29.77	--	--	--	--	--	--	--	--	--	--	--	--
3/8/2002	--		38.18	11.18	--	27.00	--	--	--	--	--	--	--	--	--	--	--	--
3/18/2002	--		38.18	10.72	--	27.46	--	--	--	--	--	--	--	--	--	--	--	--
3/11/2003	--		38.18	10.46	--	27.72	--	--	--	--	--	--	--	--	--	--	--	--
03/09/2004	P		38.18	9.79	--	28.39	<50	<0.50	<0.50	<0.50	<0.50	0.50	--	SEQM	7.2	--	--	--
09/17/2004	--		38.18	15.35	--	22.83	--	--	--	--	--	--	--	--	--	--	--	--
03/07/2005	P		38.18	7.94	--	30.24	<50	<0.50	<0.50	<0.50	<0.50	<0.50	--	SEQM	6.7	--	--	--
09/06/2005	--		40.95	13.06	--	27.89	--	--	--	--	--	--	--	--	--	--	--	--
03/06/2006	P	u	40.95	9.26	--	31.69	<50	<0.50	<0.50	<0.50	<0.50	0.59	--	SEQM	7.2	--	--	--
9/5/2006	--		40.95	12.61	--	28.34	--	--	--	--	--	--	--	--	--	--	--	--
3/5/2007	P		40.95	9.12	--	31.83	<50	<0.50	<0.50	<0.50	0.53	<0.50	6.79	TAMC	7.17	--	--	--

**Table 1. Summary of Ground-Water Monitoring Data: Relative Water Elevations and Laboratory Analyses**  
**Former BP Station #11109, 4280 Foothill Blvd., Oakland, CA**

Well and Sample Date	P/NP	Footnote	TOC Elevation (feet)	DTW (feet bgs)	Product Thickness (feet)	Water Level Elevation (feet)	Concentrations in (µg/L)						DO (mg/L)	Lab	pH	DRO/TPHd (µg/L)	TOG (µg/L)	HVOC (µg/L)
							GRO/TPHg	Benzene	Toluene	Ethyl-Benzene	Total Xylenes	MtBE						
<b>MW-8 Cont.</b>																		
9/7/2007	--		40.95	13.56	--	27.39	--	--	--	--	--	--	--	--	--	--	--	--
3/6/2008	P		40.95	9.80	--	31.15	<50	<0.50	<0.50	<0.50	<0.50	<0.50	4.14	CEL	6.86	--	--	--
9/3/2008	--		40.95	14.20	--	26.75	--	--	--	--	--	--	--	--	--	--	--	--
3/4/2009	P		40.95	9.51	--	31.44	<50	<0.50	<0.50	<0.50	<0.50	<0.50	2.62	CEL	6.96	--	--	--
9/30/2009	--	x	38.19	14.92	--	23.27	--	--	--	--	--	--	--	--	--	--	--	--
10/28/2009	--		38.19	13.56	--	24.63	--	--	--	--	--	--	--	--	--	--	--	--
3/23/2010	--	f	38.19	--	--	--	--	--	--	--	--	--	--	--	--	--	--	--
<b>6/10/2010</b>	<b>--</b>		<b>38.19</b>	<b>11.06</b>	<b>--</b>	<b>27.13</b>	<b>--</b>	<b>--</b>	<b>--</b>	<b>--</b>	<b>--</b>	<b>--</b>	<b>--</b>	<b>--</b>	<b>--</b>	<b>--</b>	<b>--</b>	<b>--</b>
<b>MW-9</b>																		
10/3/1991	--		41.25	14.12	--	27.13	<50	<0.3	0.4	<0.3	<0.3	--	--	SUP	--	--	--	--
10/15/1991	--		41.25	14.27	--	26.98	--	--	--	--	--	--	--	--	--	--	--	--
12/4/1991	--		41.25	13.84	--	27.41	--	--	--	--	--	--	--	--	--	--	--	--
12/16/1991	--		41.25	14.18	--	27.07	--	--	--	--	--	--	--	--	--	--	--	--
1/6/1992	--		41.25	13.42	--	27.83	<50	<0.5	<0.5	<0.5	0.9	--	--	ANA	--	--	--	--
1/22/1992	--		41.25	13.75	--	27.50	--	--	--	--	--	--	--	--	--	--	--	--
1/28/1992	--		41.25	14.76	--	26.49	--	--	--	--	--	--	--	--	--	--	--	--
2/5/1992	--		41.25	13.38	--	27.87	--	--	--	--	--	--	--	--	--	--	--	--
2/12/1992	--		41.25	11.86	--	29.39	--	--	--	--	--	--	--	--	--	--	--	--
2/17/1992	--		41.25	10.78	--	30.47	--	--	--	--	--	--	--	--	--	--	--	--
4/3/1992	--		41.25	11.63	--	29.62	--	--	--	--	--	--	--	--	--	--	--	--
4/8/1992	--		41.25	12.25	--	29.00	<50	<0.5	<0.5	<0.5	<0.5	--	--	ANA	--	--	--	--
4/14/1992	--		41.25	12.32	--	28.93	--	--	--	--	--	--	--	--	--	--	--	--
4/29/1992	--		41.25	13.07	--	28.18	--	--	--	--	--	--	--	--	--	--	--	--
5/7/1992	--		41.25	14.43	--	26.82	--	--	--	--	--	--	--	--	--	--	--	--
7/3/1992	--		41.25	13.85	--	27.40	<50	<0.5	<0.5	<0.5	<0.5	--	--	ANA	--	--	--	--
10/8/1992	--		41.25	14.89	--	26.36	<50	<0.5	<0.5	<0.5	<0.5	--	--	ANA	--	--	--	--
12/31/1992	--		41.25	11.90	--	29.35	<50	<0.5	<0.5	<0.5	<0.5	--	--	ANA	--	--	--	--
4/21/1993	--	n	41.25	13.68	--	27.57	<50	<0.5	<0.5	<0.5	<0.5	--	--	PACE	--	--	--	--
7/7/1993	--	n	41.25	13.12	--	28.13	<50	<0.5	<0.5	<0.5	<0.5	<5.0	--	PACE	--	--	--	--
9/21/1993	--	n	41.25	14.00	--	27.25	<50	<0.5	<0.5	<0.5	0.9	--	--	PACE	--	--	--	--

**Table 1. Summary of Ground-Water Monitoring Data: Relative Water Elevations and Laboratory Analyses**  
**Former BP Station #11109, 4280 Foothill Blvd., Oakland, CA**

Well and Sample Date	P/NP	Footnote	TOC Elevation (feet)	DTW (feet bgs)	Product Thickness (feet)	Water Level Elevation (feet)	Concentrations in (µg/L)						DO (mg/L)	Lab	pH	DRO/TPHd (µg/L)	TOG (µg/L)	HVOC (µg/L)
							GRO/TPHg	Benzene	Toluene	Ethyl-Benzene	Total Xylenes	MtBE						
<b>MW-9 Cont.</b>																		
12/17/1993	--		41.25	12.98	--	28.27	--	--	--	--	--	--	--	--	--	--	--	--
12/23/1993	--	n	41.25	--	--	--	<50	<0.5	<0.5	<0.5	0.9	<5.0	--	PACE	--	--	--	--
4/7/1994	--	n	41.25	13.24	--	28.01	<50	<0.5	<0.5	<0.5	<0.5	<5.0	4.7	PACE	--	--	--	--
7/6/1994	--	n	41.25	13.77	--	27.48	<50	<0.5	<0.5	<0.5	<0.5	--	3.9	PACE	--	--	--	--
10/7/1994	--	n	41.25	14.60	--	26.65	<50	<0.5	<0.5	<0.5	<0.5	<5.0	3.0	PACE	--	--	--	--
1/27/1995	--		41.25	8.47	--	32.78	<50	<0.5	<0.5	<0.5	<1	--	2.5	ATI	--	--	--	--
3/30/1995	--		41.25	8.19	--	33.06	<50	<0.50	<0.50	<0.50	<1.0	--	8.4	ATI	--	--	--	--
6/20/1995	--		41.25	11.25	--	30.00	<50	<0.50	<0.50	<0.50	<1.0	--	8.1	ATI	--	--	--	--
10/3/1995	--		41.25	14.68	--	26.57	<50	<0.50	<0.50	<0.50	<1.0	<5.0	6.0	ATI	--	--	--	--
12/6/1995	--		41.25	16.07	--	25.18	<50	<0.50	<0.50	<0.50	<1.0	46	5.4	ATI	--	--	--	--
3/21/1996	--		41.25	9.60	--	31.65	<50	<0.5	<1	<1	<1	<10	8.0	SPL	--	--	--	--
6/21/1996	--		41.25	10.86	--	30.39	<50	<0.5	<1	<1	<1	<10	7.8	SPL	--	--	--	--
9/6/1996	--		41.25	11.52	--	29.73	--	--	--	--	--	--	--	--	--	--	--	--
9/9/1996	--	k	41.25	--	--	--	<50	<0.5	<1.0	<1.0	<1.0	20/21	7.3	SPL	--	--	--	--
12/19/1996	--		41.25	10.43	--	30.82	<50	<0.5	<1.0	<1.0	<1.0	<10	7.3	SPL	--	--	--	--
3/17/1997	--		41.25	9.87	--	31.38	--	--	--	--	--	--	--	--	--	--	--	--
8/12/1997	--		41.25	11.44	--	29.81	--	--	--	--	--	--	--	--	--	--	--	--
12/10/1997	--		41.25	10.44	--	30.81	--	--	--	--	--	--	--	--	--	--	--	--
3/12/1998	--		41.25	9.50	--	31.75	--	--	--	--	--	--	--	--	--	--	--	--
6/23/1998	--		41.25	10.06	--	31.19	--	--	--	--	--	--	--	--	--	--	--	--
3/31/1999	--		41.25	9.06	--	32.19	--	--	--	--	--	--	--	--	--	--	--	--
8/25/1999	--		41.25	12.00	--	29.25	--	--	--	--	--	--	--	--	--	--	--	--
3/9/2000	--		41.25	10.57	--	30.68	--	--	--	--	--	--	--	--	--	--	--	--
3/8/2001	--		41.25	9.73	--	31.52	--	--	--	--	--	--	--	--	--	--	--	--
3/8/2002	--		41.25	11.89	--	29.36	--	--	--	--	--	--	--	--	--	--	--	--
3/18/2002	--		41.25	9.68	--	31.57	--	--	--	--	--	--	--	--	--	--	--	--
3/11/2003	--		41.25	9.21	--	32.04	--	--	--	--	--	--	--	--	--	--	--	--
03/09/2004	--		41.25	10.99	--	30.26	<50	<0.50	<0.50	<0.50	<0.50	<0.50	--	SEQM	6.6	--	--	--
09/17/2004	--		41.25	13.35	--	27.90	--	--	--	--	--	--	--	--	--	--	--	--
03/07/2005	P		41.25	8.94	--	32.31	<50	<0.50	<0.50	<0.50	<0.50	<0.50	--	SEQM	6.9	--	--	--
09/06/2005	--		44.06	11.99	--	32.07	--	--	--	--	--	--	--	--	--	--	--	--

**Table 1. Summary of Ground-Water Monitoring Data: Relative Water Elevations and Laboratory Analyses**  
**Former BP Station #11109, 4280 Foothill Blvd., Oakland, CA**

Well and Sample Date	P/NP	Footnote	TOC Elevation (feet)	DTW (feet bgs)	Product Thickness (feet)	Water Level Elevation (feet)	Concentrations in (µg/L)						DO (mg/L)	Lab	pH	DRO/TPHd (µg/L)	TOG (µg/L)	HVOC (µg/L)
							GRO/TPHg	Benzene	Toluene	Ethyl-Benzene	Total Xylenes	MtBE						
<b>MW-9 Cont.</b>																		
03/06/2006	P	u	44.06	8.26	--	35.80	<50	<0.50	<0.50	<0.50	<0.50	<0.50	--	SEQM	6.9	--	--	--
9/5/2006	--		44.06	11.63	--	32.43	--	--	--	--	--	--	--	--	--	--	--	--
3/5/2007	P		44.06	9.33	--	34.73	<50	<0.50	<0.50	<0.50	<0.50	<0.50	2.22	TAMC	7.03	--	--	--
9/7/2007	--		44.06	12.28	--	31.78	--	--	--	--	--	--	--	--	--	--	--	--
3/6/2008	P		44.06	10.11	--	33.95	<50	<0.50	<0.50	<0.50	<0.50	<0.50	3.72	CEL	6.90	--	--	--
9/3/2008	--		44.06	13.49	--	30.57	--	--	--	--	--	--	--	--	--	--	--	--
3/4/2009	P		44.06	8.15	--	35.91	<50	<0.50	<0.50	<0.50	<0.50	<0.50	4.03	CEL	6.84	--	--	--
9/30/2009	--	x	41.25	12.98	--	28.27	--	--	--	--	--	--	--	--	--	--	--	--
10/28/2009	--		41.25	11.98	--	29.27	--	--	--	--	--	--	--	--	--	--	--	--
3/23/2010	P		41.25	10.59	--	30.66	<50	<0.50	<0.50	<0.50	<1.0	<0.50	0.86	TAMC	6.54	--	--	--
<b>6/10/2010</b>	<b>--</b>		<b>41.25</b>	<b>10.25</b>	<b>--</b>	<b>31.00</b>	<b>--</b>	<b>--</b>	<b>--</b>	<b>--</b>	<b>--</b>	<b>--</b>	<b>--</b>	<b>--</b>	<b>--</b>	<b>--</b>	<b>--</b>	<b>--</b>
<b>MW-10</b>																		
6/16/2009	--	x	39.78	8.60	0.01	31.19	--	--	--	--	--	--	--	--	--	--	--	--
7/22/2009	--		39.78	9.68	0.01	30.11	--	--	--	--	--	--	--	--	--	--	--	--
8/6/2009	--		39.78	9.48	--	30.30	--	--	--	--	--	--	--	--	--	--	--	--
9/30/2009	--		39.78	9.69	0.01	30.10	--	--	--	--	--	--	--	--	--	--	--	--
10/28/2009	P	z	39.78	8.53	--	31.25	62,000	8,300	5,300	3,100	12,000	<50	1.14	CEL	6.9	--	--	--
3/23/2010	P		39.78	7.70	SHEEN	32.08	58,000	6,500	4,800	2,300	9,700	<100	0.71	TAMC	6.69	--	--	--
<b>6/10/2010</b>	<b>--</b>		<b>39.78</b>	<b>8.93</b>	<b>0.01</b>	<b>30.86</b>	<b>--</b>	<b>--</b>	<b>--</b>	<b>--</b>	<b>--</b>	<b>--</b>	<b>--</b>	<b>--</b>	<b>--</b>	<b>--</b>	<b>--</b>	<b>--</b>
<b>MW-11</b>																		
9/30/2009	P	x	40.04	10.55	--	29.49	30,000	850	1,400	1,000	3,700	27	--	CEL	7.09	--	--	--
10/28/2009	P		40.04	8.00	--	32.04	27,000	1,100	2,300	1,500	5,800	<50	0.82	CEL	6.74	--	--	--
3/23/2010	P		40.04	7.25	--	32.79	19,000	530	830	790	2,200	<25	0.66	TAMC	6.64	--	--	--
<b>6/10/2010</b>	<b>--</b>		<b>40.04</b>	<b>9.65</b>	<b>SHEEN</b>	<b>30.39</b>	<b>--</b>	<b>--</b>	<b>--</b>	<b>--</b>	<b>--</b>	<b>--</b>	<b>--</b>	<b>--</b>	<b>--</b>	<b>--</b>	<b>--</b>	<b>--</b>
<b>MW-12</b>																		
9/30/2009	--	x	40.32	11.02	0.02	29.32	--	--	--	--	--	--	--	--	--	--	--	--
10/28/2009	P	z	40.32	10.40	--	29.92	43,000	5,800	800	2,900	6,800	<50	0.73	CEL	6.7	--	--	--
3/23/2010	P		40.32	11.46	SHEEN	28.86	39,000	4,800	1,000	3,100	6,400	<25	1.06	TAMC	6.60	--	--	--
<b>6/10/2010</b>	<b>--</b>		<b>40.32</b>	<b>11.35</b>	<b>SHEEN</b>	<b>28.97</b>	<b>--</b>	<b>--</b>	<b>--</b>	<b>--</b>	<b>--</b>	<b>--</b>	<b>--</b>	<b>--</b>	<b>--</b>	<b>--</b>	<b>--</b>	<b>--</b>



**Table 1. Summary of Ground-Water Monitoring Data: Relative Water Elevations and Laboratory Analyses  
Former BP Station #11109, 4280 Foothill Blvd., Oakland, CA**

Well and Sample Date	P/NP	Footnote	TOC Elevation (feet)	DTW (feet bgs)	Product Thickness (feet)	Water Level Elevation (feet)	Concentrations in (µg/L)						DO (mg/L)	Lab	pH	DRO/TPHd (µg/L)	TOG (µg/L)	HVOG (µg/L)
							GRO/TPHg	Benzene	Toluene	Ethyl-Benzene	Total Xylenes	MtBE						
<b>QC-2</b>																		
10/8/1992	--	1	41.25	--	--	--	<50	<0.5	<0.5	<0.5	<0.5	--	--	ANA	--	--	--	--
12/31/1992	--	1	41.25	--	--	--	<50	<0.5	<0.5	<0.5	<0.5	--	--	ANA	--	--	--	--
4/21/1993	--	1, n	41.25	--	--	--	--	--	--	--	--	--	--	PACE	--	--	--	--
7/7/1993	--	1, n	41.25	--	--	--	<50	<0.5	<0.5	<0.5	0.6	--	--	PACE	--	--	--	--
9/21/1993	--	1, n	41.25	--	--	--	<50	<0.5	<0.5	<0.5	<0.5	--	--	PACE	--	--	--	--
12/23/1993	--	1	41.25	--	--	--	<50	<0.5	<0.5	<0.5	<0.5	--	--	PACE	--	--	--	--
4/7/1994	--	1	41.25	--	--	--	<50	<0.5	<0.5	<0.5	<0.5	--	--	PACE	--	--	--	--
7/6/1994	--	1	41.25	--	--	--	<50	<0.5	<0.5	<0.5	<0.5	--	--	PACE	--	--	--	--
10/7/1994	--	1	41.25	--	--	--	<50	<0.5	<0.5	<0.5	<0.5	--	--	PACE	--	--	--	--
1/27/1995	--	1	41.25	--	--	--	<50	<0.5	0.5	<0.5	<1	--	--	ATI	--	--	--	--
3/30/1995	--	1	41.25	--	--	--	<50	<0.50	<0.50	<0.50	<1.0	--	--	ATI	--	--	--	--
6/20/1995	--	1	41.25	--	--	--	<50	<0.50	<0.50	<0.50	<1.0	--	--	ATI	--	--	--	--
10/3/1995	--	1	41.25	--	--	--	<50	<0.50	<0.50	<0.50	<1.0	<5.0	--	ATI	--	--	--	--
12/6/1995	--	1	41.25	--	--	--	<50	<0.50	<0.50	<0.50	<1.0	<5.0	--	ATI	--	--	--	--
3/21/1996	--	1	41.25	--	--	--	<50	<0.5	<1	<1	<1	<10	--	SPL	--	--	--	--
6/21/1996	--	1	41.25	--	--	--	<50	<0.5	<1	<1	<1	<10	--	SPL	--	--	--	--

ABBREVIATIONS & SYMBOLS:

--/-- = Not analyzed/applicable/measured/available  
< = Not detected at or above specified laboratory reporting limit  
DO = Dissolved oxygen  
DTW = Depth to water in ft bgs  
ft bgs = Feet below ground surface  
GRO = Gasoline range organics, range C4-C12  
GWE = Groundwater elevation in ft  
mg/L = Milligrams per liter  
MTBE = Methyl tert-butyl ether  
ND = Not detected  
NP = Well not purged prior to sampling  
P = Well purged prior to sampling  
TOC = Top of casing elevation in ft  
TPH-g = Total petroleum hydrocarbons as gasoline  
µg/L = Micrograms per liter  
ANA = Anametrix, Inc.  
PACE = Pace, Inc.  
ATI = Analytical Technologies, Inc.  
CEI = Ceimic Corporation  
SPL = Southern Petroleum Laboratories  
SEQ/SEQM= Sequoia Analytical/Sequoia Analytical - Morgan Hill (Laboratories)  
SUP = Superior Analytical Laboratory

FOOTNOTES:

- (a) Free product in well.
- (c) Well destroyed during tank removal in November 1990.
- (d) Methylene chloride.
- (e) 1,2-Dichloroethane.
- (f) Well inaccessible.
- (g) Sample collected from MW-2 for TPH-d analysis received in laboratory 7 days after collection; sample exceeded EPA recommended holding time for TPH-d on a water matrix.
- (h) Blind duplicate.
- (i) TOC lowered.
- (j) A copy of the documentation for this data is included in Appendix C of Alisto report 10-014-07-001.
- (k) EPA Methods 8020/8260 used.
- (l) Travel blank.
- (n) A copy of the documentation for this data is included in the Blaine Tech Services, Inc. report 020308-DW-2. The data for samples taken on April 21, 1993, have been destroyed. No chromatograms could be located for the samples taken on: July 7, 1993, for well MW-2 and TB; September 21, 1993, for all wells MW-3, MW-4, MW-6, MW-7, MW-8, MW-9, the DUP and TB; December 23, 1993, for wells MW-2 and MW-3; and July 6, 1994, for wells MW-2, MW-4, MW-6, and MW-9.
- (p) Well not sampled due to damage during site construction.
- (q) Sheen in well.
- (r) Well dry.
- (s) The hydrocarbon result for GRO was partly due to individual peaks in the quantification range.
- (t) MS and/or MSD were below the acceptance limits for MTBE. Matrix interference was suspected.
- (u) Possible high bias for benzene due to CCV falling outside acceptance criteria.
- (v) The sample concentration is greater than four times the spike concentration.
- (w) Insufficient water to sample.
- (x) Well surveyed 4/13/2009.
- (y) Quantitation of unknown hydrocarbon(s) in sample based on gasoline.
- (z) Free product not observed during initial gauging activities, but was observed following or during purge.

NOTES:

GWE adjusted assuming a specific gravity of 0.75 for free product.  
Beginning in the fourth quarter 2003, the laboratory modified the reported analyte list. TPH-g has been changed to GRO. The resulting data may be impacted by the potential inclusion of non-TPHg analytes within the

requested fuel range resulting in a higher concentration being reported.

GRO analysis was completed by EPA method 8260B (C4-C12) for samples collected from the time period April 2006 through February 4, 2008. The analysis for GRO was changed to EPA method 8015B (C6-C12) for samples collected from the time period February 5, 2008 through September 30, 2009. GRO analysis was changed to EPA method 8260B (C6-C12) for the time period October 1, 2009 through the present.

Note: The data within this table collected prior to April 2006 was provided to Broadbent & Associates, Inc. by Atlantic Richfield Company and their previous consultants. Broadbent & Associates, Inc. has not verified the accuracy of this information.

**Table 2. Summary of Fuel Additives Analytical Data  
Former BP Station #11109, 4280 Foothill Blvd., Oakland, CA**

Well and Sample Date	Concentrations in (µg/L)								Comments
	Ethanol	TBA	MTBE	DIPE	ETBE	TAME	1,2-DCA	EDB	
<b>MW-2</b>									
12/09/2003	<100	<20	24	<0.50	<0.50	<0.50	--	--	
03/09/2004	<100	<20	27	<0.50	<0.50	<0.50	<0.50	<0.50	
09/17/2004	<100	<20	21	<0.50	<0.50	<0.50	<0.50	<0.50	
9/5/2006	<300	<20	<0.50	<0.50	<0.50	<0.50	<0.50	<0.50	
<b>MW-3</b>									
12/09/2003	<100	<20	6.4	<0.50	<0.50	<0.50	--	--	
03/09/2004	<100	<20	6.9	<0.50	<0.50	<0.50	<0.50	<0.50	
03/07/2005	<100	<20	5.1	<0.50	<0.50	<0.50	<0.50	<0.50	
03/06/2006	<300	<20	6.9	<0.50	<0.50	<0.50	<0.50	<0.50	
3/5/2007	<300	<20	5.4	<0.50	<0.50	<0.50	<0.50	<0.50	
3/6/2008	<300	<10	4.2	<0.50	<0.50	<0.50	<0.50	<0.50	
3/4/2009	<300	<10	4.9	<0.50	<0.50	<0.50	<0.50	<0.50	
9/30/2009	<300	<10	6.8	<0.50	<0.50	<0.50	<0.50	<0.50	
3/23/2010	<100	<4.0	3.2	<0.50	<0.50	<0.50	<0.50	<0.50	
<b>MW-4</b>									
12/09/2003	<500	<100	130	<2.5	<2.5	2.7	--	--	
03/09/2004	<100	<20	35	<0.50	<0.50	<0.50	<0.50	<0.50	
09/17/2004	<500	<100	140	<2.5	<2.5	2.6	<2.5	<2.5	
03/07/2005	<100	<20	42	<0.50	<0.50	0.56	<0.50	<0.50	
09/06/2005	<150	<10	180	<0.50	<0.50	2.8	<0.50	<0.50	a
03/06/2006	<600	<40	110	<1.0	<1.0	1.4	<1.0	<1.0	
9/5/2006	<600	<40	190	<1.0	<1.0	1.7	<1.0	<1.0	
3/5/2007	<300	<20	13	<0.50	<0.50	<0.50	<0.50	<0.50	
9/7/2007	<300	<20	130	<0.50	<0.50	1.7	<0.50	<0.50	b (MTBE)
3/6/2008	<300	14	170	<0.50	<0.50	2.1	<0.50	<0.50	
9/3/2008	<3,000	<100	150	<5.0	<5.0	<5.0	<5.0	<5.0	
3/4/2009	<3,000	<100	110	<5.0	<5.0	<5.0	<5.0	<5.0	
9/30/2009	<1,200	<40	140	<2.0	<2.0	<2.0	<2.0	<2.0	
3/23/2010	<100	18	84	<0.50	<0.50	0.88	<0.50	<0.50	

**Table 2. Summary of Fuel Additives Analytical Data  
Former BP Station #11109, 4280 Foothill Blvd., Oakland, CA**

Well and Sample Date	Concentrations in (µg/L)								Comments
	Ethanol	TBA	MTBE	DIPE	ETBE	TAME	1,2-DCA	EDB	
<b>MW-5</b>									
03/09/2004	<10,000	<2,000	<50	<50	<50	<50	96	<50	
03/06/2006	<30,000	<2,000	<50	60	<50	<50	<50	<50	
3/5/2007	<30,000	<2,000	<50	57	<50	<50	<50	<50	
3/23/2010	<1,000	<40	<5.0	<5.0	<5.0	<5.0	<5.0	<5.0	
<b>MW-6</b>									
12/09/2003	<100	<20	12	<0.50	<0.50	<0.50	--	--	
03/09/2004	<100	<20	10	<0.50	<0.50	<0.50	0.58	<0.50	
03/07/2005	<100	<20	5.8	<0.50	<0.50	<0.50	<0.50	<0.50	
03/06/2006	<300	<20	8.1	<0.50	<0.50	<0.50	<0.50	<0.50	
3/5/2007	<300	<20	5.6	<0.50	<0.50	<0.50	<0.50	<0.50	
3/6/2008	<300	<10	1.9	<0.50	<0.50	<0.50	<0.50	<0.50	
3/4/2009	<300	<10	2.8	<0.50	<0.50	<0.50	<0.50	<0.50	
9/30/2009	<300	<10	4.4	<0.50	<0.50	<0.50	<0.50	<0.50	
3/23/2010	<100	<4.0	1.0	<0.50	<0.50	<0.50	<0.50	<0.50	
<b>MW-7</b>									
12/09/2003	<100	<20	8.7	<0.50	<0.50	<0.50	--	--	
03/09/2004	<100	<20	6.9	<0.50	<0.50	<0.50	1.2	<0.50	
09/17/2004	<100	<20	7.0	<0.50	<0.50	<0.50	<0.50	<0.50	
03/07/2005	<100	<20	7.2	<0.50	<0.50	<0.50	<0.50	<0.50	
09/06/2005	<150	30	16	0.60	<0.50	<0.50	<0.50	<0.50	
03/06/2006	<300	<20	8.3	<0.50	<0.50	<0.50	<0.50	<0.50	
9/5/2006	<1,500	<100	12	<2.5	<2.5	<2.5	<2.5	<2.5	
3/5/2007	<600	<40	7.6	<1.0	<1.0	<1.0	<1.0	<1.0	
9/7/2007	<300	<20	1.2	<0.50	<0.50	<0.50	<0.50	<0.50	
3/6/2008	<600	<20	<1.0	<1.0	<1.0	<1.0	<1.0	<1.0	
9/3/2008	<300	17	5.5	<0.50	<0.50	<0.50	<0.50	<0.50	
3/4/2009	<300	12	3.4	<0.50	<0.50	<0.50	<0.50	<0.50	
9/30/2009	<300	<10	3.3	<0.50	<0.50	<0.50	<0.50	<0.50	
3/23/2010	<100	12	<0.50	<0.50	<0.50	<0.50	<0.50	<0.50	

**Table 2. Summary of Fuel Additives Analytical Data**  
**Former BP Station #11109, 4280 Foothill Blvd., Oakland, CA**

Well and Sample Date	Concentrations in (µg/L)								Comments
	Ethanol	TBA	MTBE	DIPE	ETBE	TAME	1,2-DCA	EDB	
<b>MW-8</b>									
03/09/2004	<100	<20	0.50	<0.50	<0.50	<0.50	<0.50	<0.50	
03/07/2005	<100	<20	<0.50	<0.50	<0.50	<0.50	<0.50	<0.50	
03/06/2006	<300	<20	0.59	<0.50	<0.50	<0.50	<0.50	<0.50	
3/5/2007	<300	<20	<0.50	<0.50	<0.50	<0.50	<0.50	<0.50	
3/6/2008	<300	<10	<0.50	<0.50	<0.50	<0.50	<0.50	<0.50	
3/4/2009	<300	<10	<0.50	<0.50	<0.50	<0.50	<0.50	<0.50	
<b>MW-9</b>									
03/09/2004	<100	<20	<0.50	<0.50	<0.50	<0.50	<0.50	<0.50	
03/07/2005	<100	<20	<0.50	<0.50	<0.50	<0.50	<0.50	<0.50	
03/06/2006	<300	<20	<0.50	<0.50	<0.50	<0.50	<0.50	<0.50	
3/5/2007	<300	<20	<0.50	<0.50	<0.50	<0.50	<0.50	<0.50	
3/6/2008	<300	<10	<0.50	<0.50	<0.50	<0.50	<0.50	<0.50	
3/4/2009	<300	<10	<0.50	<0.50	<0.50	<0.50	<0.50	<0.50	
3/23/2010	<100	<4.0	<0.50	<0.50	<0.50	<0.50	<0.50	<0.50	
<b>MW-10</b>									
10/28/2009	<10,000	<400	<50	<50	<50	<50	<50	<50	
3/23/2010	<20,000	<800	<100	<100	<100	<100	<100	<100	
<b>MW-11</b>									
9/30/2009	<6,000	<200	27	<10	<10	<10	<10	<10	
10/28/2009	<10,000	<400	<50	<50	<50	<50	<50	<50	
3/23/2010	<5,000	<200	<25	<25	<25	<25	<25	<25	
<b>MW-12</b>									
10/28/2009	<10,000	<400	<50	<50	<50	<50	<50	<50	
3/23/2010	<5,000	<200	<25	<25	<25	<25	<25	<25	

ABBREVIATIONS AND SYMBOLS:

TBA = tert-Butyl alcohol

MTBE = Methyl tert-butyl ether

DIPE = Di-isopropyl ether

ETBE = Ethyl tert-butyl ether

TAME = tert-Amyl methyl ether

1,2-DCA = 1,2-Dichloroethane

EDB = 1,2-Dibromoethane

µg/L = micrograms per liter

< = Not detected at or above specified laboratory reporting limit

-- = Data not available, not analyzed, or not applicable

FOOTNOTES:

(a) MS and/or MSD below acceptance limits for MTBE. Matrix interference suspected.

(b) The sample concentration is greater than four times the spike concentration.

NOTES:

All fuel oxygenate compounds analyzed using EPA Method 8260B.

Note: The data within this table collected prior to April 2006 was provided to Broadbent & Associates, Inc. by Atlantic Richfield Company and their previous consultants. Broadbent & Associates, Inc. has not verified the accuracy of this information.



**Table 3. Historical Ground-Water Flow Direction and Gradient  
Former BP Station #11109, 4280 Foothill Blvd., Oakland, CA**

<b>Date Sampled</b>	<b>Approximate Flow Direction</b>	<b>Approximate Hydraulic Gradient</b>
3/6/2006	Southwest	0.05
9/5/2006	Southwest	0.05
2/21/2007	Southwest	0.02
9/7/2007	Southwest	0.03
3/6/2008	Southwest	0.01
9/3/2008	Southwest	0.006
3/4/2009	Southwest	0.02
9/30/2009	Northwest	0.07
10/28/2009	Northwest	0.04
3/23/2010	Northwest	0.03
<b>6/10/2010</b>	<b>Northwest</b>	<b>0.02</b>

Note: The data within this table collected prior to April 2006 was provided to Broadbent & Associates, Inc. by Atlantic Richfield Company and their previous consultants. Broadbent & Associates, Inc. has not verified the accuracy of this information.

**Table 4**  
**Summary of Free Product Removal**  
Former BP Service Station #11109  
4280 Foothill Boulevard, Oakland, California

Well ID	Date of Removal Event	DTW (feet)	Product Thickness (feet)	Product Removed (gallons)	Cumulative Product Removed (gallons)
MW-5	11/5/1992	--	--	0.200	0.200
MW-5	2/25/1993	--	--	0.100	0.300
MW-5	3/18/1993	--	--	0.100	0.400
MW-5	4/13/1993	--	--	0.100	0.500
MW-5	4/23/1993	--	--	13.0*	13.500
MW-5	5/24/1993	--	--	0.100	13.600
MW-5	10/14/1993	--	--	0.300	13.900
MW-5	11/10/1993	--	--	0.400	14.300
MW-5	12/23/1993	--	--	0.400	14.700
MW-5	8/12/1997	12.18	0.22	--	14.700
MW-5	12/10/1997	10.78	0.06	--	14.700
MW-5	3/12/1998	10.11	0.22	0.200	14.900
MW-5	6/23/1998	10.20	0.02	<0.050	14.900
MW-5	9/11/1998	11.61	0.04	0.100	15.000
MW-5	8/25/1999	14.69	0.38	0.070	15.070
MW-5	3/9/2000	14.83	0.60	0.400	15.470
MW-5	7/14/2003	12.72	0.03	0.019	15.489
MW-5	8/25/2003	14.04	0.00	0.000	15.489
MW-5	9/25/2003	14.38	0.08	0.052	15.542
MW-5	10/3/2003	12.15	0.06	0.040	15.582
MW-5	11/12/2003	12.74	0.19	0.120	15.702
MW-5	12/9/2003	11.44	0.03	0.040	15.742
MW-5	2/2/2004	6.47	0.04	0.030	15.772
MW-5	2/9/2004	10.61	0.04	0.030	15.802
MW-5	3/9/2004	7.91	--	--	15.802
MW-5	4/13/2004	9.68	0.28	0.200	16.002
MW-5	5/5/2004	11.93	Sheen	--	16.002
MW-5	6/3/2004	12.60	Sheen	--	16.002
MW-5	7/2/2004	11.11	0.10	0.060	16.062
MW-5	8/31/2004	12.80	0.05	0.132	16.194
MW-5	9/17/2004	12.13	0.15	--	16.194
MW-5	10/25/2004	10.66	0.26	0.170	16.364
MW-5	11/8/2004	9.98	0.02	0.020	16.384
MW-5	12/15/2004	8.76	0.01	0.010	16.394
MW-5	1/13/2005	7.12	--	--	16.394
MW-5	2/1/2005	8.10	0.01	0.007	16.400
MW-5	3/7/2005	8.62	0.02	0.013	16.413
MW-5	4/29/2005	9.39	--	--	16.413
MW-5	5/12/2005	7.51	0.01	0.007	16.420
MW-5	6/23/2005	7.70	--	--	16.420
MW-5	7/2/2005	10.81	--	--	16.420
MW-5	8/24/2005	10.53	--	--	16.420
MW-5	9/6/2005	11.16	0.18	0.119	16.539
MW-5	1/27/2006	9.02	0.02	0.013	16.433
MW-5	2/15/2006	8.38	0.02	0.013	16.446
MW-5	3/6/2006	8.60	Sheen	--	16.446

**Table 4**  
**Summary of Free Product Removal**  
Former BP Service Station #11109  
4280 Foothill Boulevard, Oakland, California

Well ID	Date of Removal Event	DTW (feet)	Product Thickness (feet)	Product Removed (gallons)	Cumulative Product Removed (gallons)
MW-5	4/21/2006	8.02	0.27	0.251	16.697
MW-5	5/30/2006	9.13	0.07	0.045	16.742
MW-5	6/27/2006	9.49	0.09	0.058	16.801
MW-5	7/31/2006	10.08	0.08	0.052	16.853
MW-5	8/28/2006	10.75	0.09	0.059	16.911
MW-5	9/5/2006	6.16	0.03	0.020	16.931
MW-5	10/1/2006	--	--	--	16.931
MW-5	11/1/2006	--	--	--	16.931
MW-5	12/1/2006	--	--	--	16.931
MW-5	1/1/2007	--	--	--	16.931
MW-5	2/1/2007	--	--	--	16.931
MW-5	3/5/2007	8.34	Sheen	--	16.931
MW-5	4/1/2007	--	--	--	16.931
MW-5	5/1/2007	--	--	--	16.931
MW-5	6/1/2007	--	--	--	16.931
MW-5	7/1/2007	--	--	--	16.931
MW-5	8/1/2007	--	--	--	16.931
MW-5	9/7/2007	15.15	0.15	--	16.931
MW-5	9/18/2007	15.42	0.02	4.00*	20.931
MW-5	10/17/2007	12.50	0.35	5.5*	26.431
MW-5	11/8/2007	13.20	0.40	5.0*	31.431
MW-5	12/12/2007	12.25	0.52	3.5*	34.931
MW-5	1/14/2008	10.30	0.49	5.0*	39.931
MW-5	2/27/2008	13.22	0.12	4.0*	43.931
MW-5	3/6/2008	12.90	0.14	3.0*	46.931
MW-5	4/1/2008	9.52	0.07	4.0*	50.931
MW-5	5/20/2008	8.68	0.07	7.0*	57.931
MW-5	6/18/2008	10.46	0.18	0.00	57.931
MW-5	7/16/2008	11.25	0.00	0.0375	57.968
MW-5	8/13/2008	--	--	2.125*	60.093
MW-5	9/3/2008	12.90	0.99	3.0*	63.093
MW-5	9/15/2008	12.75	0.15	4.0*	67.093
MW-5	10/15/2008	13.43	0.50	5.0*	72.093
MW-5	11/20/2008	13.55	0.63	2.625*	74.718
MW-5	12/18/2008	12.62	0.37	3.625*	78.343
MW-5	1/14/2009	12.43	0.11	4.0*	82.343
MW-5	2/17/2009	8.80	0.33	4.0*	86.343
MW-5	3/4/2009	8.45	0.16	4.0*	90.343
MW-5	4/8/2009	9.05	0.22	6.0*	96.343
MW-5	5/11/2009	9.10	0.32	8.0*	104.343
MW-5	6/16/2009	9.15	0.02	5.5*	109.843
MW-5	7/22/2009	9.33	0.12	6.0*	115.843
MW-5	8/6/2009	10.05	0.01	5.0*	120.843
MW-5	9/30/2009	10.55	0.06	8.0*	128.843
MW-5	10/28/2009	10.48	0.00	0.00	128.843
MW-5	11/13/2009	8.61	0.01	0.5*	129.343
MW-5	12/11/2009	7.83	0.01	1.0*	130.343

**Table 4**  
**Summary of Free Product Removal**  
Former BP Service Station #11109  
4280 Foothill Boulevard, Oakland, California

<b>Well ID</b>	<b>Date of Removal Event</b>	<b>DTW (feet)</b>	<b>Product Thickness (feet)</b>	<b>Product Removed (gallons)</b>	<b>Cumulative Product Removed (gallons)</b>
MW-5	1/26/2010	6.43	0.02	1.5*	131.843
MW-5	2/24/2010	6.72	0.02	2.0*	133.843
MW-5	3/23/2010	7.10	0.00	0.00	133.843
MW-5	4/19/2010	7.53	Sheen	0.00	133.843
MW-5	5/18/2010	8.96	Sheen	0.00	133.843
MW-5	6/10/2010	8.26	0.06	2.0*	135.843
MW-10	6/16/2009	8.60	0.01	2.5*	2.500
MW-10	7/22/2009	9.68	0.01	3.0*	5.500
MW-10	8/6/2009	9.48	0.00	0.00	5.500
MW-10	9/30/2009	9.69	0.01	3.0*	8.500
MW-10	10/28/2009	8.53	0.00	0.00	8.500
MW-10	11/13/2009	9.11	0.00	0.00	8.500
MW-10	12/11/2009	8.81	0.00	0.00	8.500
MW-10	1/26/2010	7.86	0.01	0.5*	9.000
MW-10	2/24/2010	7.28	0.00	0.00	9.000
MW-10	3/23/2010	7.70	0.00	0.00	9.000
MW-10	4/19/2010	8.10	0.00	0.00	9.000
MW-10	5/18/2010	8.83	0.00	0.00	9.000
MW-10	6/10/2010	8.93	0.01	2.0*	11.000
MW-11	10/28/2009	8.00	0.00	0.00	0.000
MW-11	11/13/2009	9.24	0.00	0.00	0.000
MW-11	12/11/2009	9.06	0.00	0.00	0.000
MW-11	1/26/2010	6.98	0.00	0.00	0.000
MW-11	2/24/2010	7.07	0.00	0.00	0.000
MW-11	3/23/2010	7.25	0.00	0.00	0.000
MW-11	4/19/2010	7.95	0.00	0.00	0.000
MW-11	5/18/2010	8.26	0.00	0.00	0.000
MW-11	6/10/2010	9.65	Sheen	2.0*	2.000
MW-12	9/30/2009	11.01	0.02	4.0*	4.000
MW-12	10/28/2009	10.40	0.00	0.00	4.000
MW-12	11/13/2009	10.13	0.00	0.00	4.000
MW-12	12/11/2009	10.22	0.00	0.00	4.000
MW-12	1/26/2010	8.67	0.00	0.00	4.000
MW-12	2/24/2010	10.21	0.00	0.00	4.000
MW-12	3/23/2010	11.16	Sheen	0.00	4.000
MW-12	4/19/2010	11.52	Sheen	0.5*	4.500
MW-12	5/18/2010	11.5	0.00	0.00	4.500
MW-12	6/10/2010	11.35	Sheen	1.0*	5.500
<b>Free Product Removed this Quarter:</b>					<b>7.5*</b>
<b>Total Free Product Removed:</b>					<b>154.34</b>

**ABBREVIATIONS & SYMBOLS:**

-- = Not available/applicable/measured/calculated

\* = FP/water mixture

**NOTES:**

The data within this table collected prior to April 2006 was provided to Broadbent & Associates, Inc. by Atlantic Richfield Company and their previous consultants. Broadbent & Associates, Inc. has not verified the accuracy of this information.

**APPENDIX A**

**BAI GROUND-WATER SAMPLING DATA  
(INCLUDES FIELD DATA SHEETS AND FIELD PROCEDURES)**









## BROADBENT & ASSOCIATES INC. FIELD PROCEDURES

### A.1 QUALITY ASSURANCE/QUALITY CONTROL FIELD PROTOCOLS

Field protocols have been implemented to enhance the accuracy and reliability of data collection, ground-water sample collection, transportation and laboratory analysis. Discussion of these protocols is provided below.

#### A.1.1 Water Level & Free-Product Measurement

Prior to ground-water sample collection from each monitoring well, the presence of separate-phase hydrocarbons (SPH or free product, FP) and depth to ground water shall be measured. Depth to ground water will be measured with a standard water level indicator that has been decontaminated prior to its use in accordance with procedures discussed below. Depth to groundwater will be gauged from a saw cut notch at the top of the well casing on each well head. Where FP is suspected, the initial gauging will be done with an oil-water interface probe. Once depth to water has been measured, the first retrieval of a new disposable bailer will be scrutinized for the presence of SPH/FP.

#### A.1.2 Monitoring Well Purging

Subsequent to measuring depth to ground water and prior to the collection of ground-water samples, purging of standing water within the monitoring well will be performed if called for. Consistent with the American Society for Testing and Materials (ASTM) Standard D6452-99, Section 7.1, the well will be purged of approximately three wetted-casing volumes of water, or until the well is dewatered, or until monitored field parameters indicate stabilization. The well will be purged using a pre-cleaned disposable bailer or submersible pump and disposable plastic tubing dedicated to each individual well. The well will be purged at a low flow rate to minimize the possibility of purging the well dry. So that the sample collected is representative of formation water, several field parameters will be monitored during the purging process. The sample will not be collected until these parameters (i.e. temperature, pH, and conductivity) have stabilized to within 10% of the previously measured value. If a well is purged dry, the sample should not be collected until the well has recovered to a minimum 50% of its initial volume.

#### A.1.3 Ground-Water Sample Collection

Once the wells are satisfactorily purged, water samples will be collected from each well. Water samples for organic analyses will be collected using a pre-cleaned, new, disposable bailer and transferred into the appropriate, new, laboratory-prepared containers such that no head space or air bubbles are present in the sample container (if appropriate to the analysis). The samples will be properly labeled (i.e. sample identification, sampler initials, date/time of collection, site location, requested analyses), placed in an ice chest with bagged ice or ice substitute, and delivered to the contracted analytical laboratory.

#### A.1.4 Surface Water Sample Collection

Unless specified otherwise, surface water samples will be collected from mid-depth in the central area of the associated surface water body. Water samples will be collected into appropriate, new, laboratory-prepared containers by dipping the container into the surface water unless the container has a preservative present. If a sample preservative is present, a new, cleaned non-preserved surrogate container will be used to obtain the sample which will then be directly transferred into a new, laboratory-provided, preserved container. Samples will be properly labeled and transported as described above.

#### A.1.5 Decontamination Protocol

Prior to use in each well, re-usable ground-water sampling equipment (e.g., water level indicator, oil-interface probe, purge pump, etc.) will be decontaminated. Decontamination protocol will include thoroughly cleaning with a solution of Liquinox, rinsing with clean water, and final rinsing with control water (potable water of known quality, distilled, or de-ionized water). Pre-cleaned new disposable bailers and disposable plastic tubing will be dedicated to each individual well.

#### A.1.6 Chain of Custody Procedures

Sample identification documents will be carefully prepared so identification and chain of custody can be maintained and sample disposition can be controlled. The sample identification documents include Chain-of-Custody (COC) records and Daily Field Report forms. Chain of custody procedures are outlined below.

##### Field Custody Procedures

The field sampler is individually responsible for the care and custody of the samples collected until they are properly transferred.

Samples will have unique labels. The information on these labels will correspond to the COC which shows the identification of individual samples and the contents of the shipping container. The original COC will accompany the shipment and a copy will be retained by the field sampler.

##### Transfer of Custody and Shipment

A COC will accompany samples during transfer and shipment. When transferring samples, the individual relinquishing and the individual receiving the samples will each sign, date, and note the time on the COC. This documents the sample custody transfer.

Samples will be packaged properly for shipment and dispatched to the appropriate laboratory for analysis, with a separate COC accompanying each shipment. Shipments will be accompanied by the original COC. Samples will be delivered by BAI personnel to the laboratory, or shipped by responsible courier. When a shipping courier is utilized, the sample shipment number will be identified on the COC.

#### A.1.7 Field Records

In addition to sample identification numbers and COC records, Daily Field Report records will be maintained by field staff to provide daily records of significant events, observations, and measurements during field investigations. These documents will contain observed information such as: the personnel present, site conditions, sampling procedures, measurement procedures, calibration records, equipment used, supplies used, etc. Field measurements will be recorded on the appropriate forms. Entries on the data forms will be signed and dated. The data forms will be kept as permanent file records.

**APPENDIX B**

**GEOTRACKER UPLOAD CONFIRMATION RECEIPTS**

---

STATE WATER RESOURCES CONTROL BOARD  
**GEOTRACKER ESI**

UPLOADING A GEO\_WELL FILE

**SUCCESS**

Processing is complete. No errors were found!  
Your file has been successfully submitted!

<b><u>Submittal Type:</u></b>	GEO_WELL
<b><u>Submittal Title:</u></b>	2Q10 GEO_WELL 11109
<b><u>Facility Global ID:</u></b>	T0600100217
<b><u>Facility Name:</u></b>	BP #11109
<b><u>File Name:</u></b>	GEO_WELL.zip
<b><u>Organization Name:</u></b>	Broadbent & Associates, Inc.
<b><u>Username:</u></b>	BROADBENT-C
<b><u>IP Address:</u></b>	67.118.40.90
<b><u>Submittal Date/Time:</u></b>	7/12/2010 11:02:42 AM
<b><u>Confirmation Number:</u></b>	<b>9205835998</b>