

STD 1489

ADVANCED ASSESSMENT AND REMEDIATION SERVICES

3800 Vista Oaks Drive, Suite 201, Martinez, CA 94553

Phone: (510) 370-8295 Fax: (510) 370-2335

LETTER OF TRANSMITTAL

Date: February 2, 1996

TO:


Ms. Eva Chu
Alameda County Environmental Dept.
Environmental Protection Division
1131 Harbor Bay Parkway, Room 250
Alameda, CA 94502

SUBJECT: Chromatographs of MLK Property Sample Analyses

ENCLOSED PLEASE FIND:

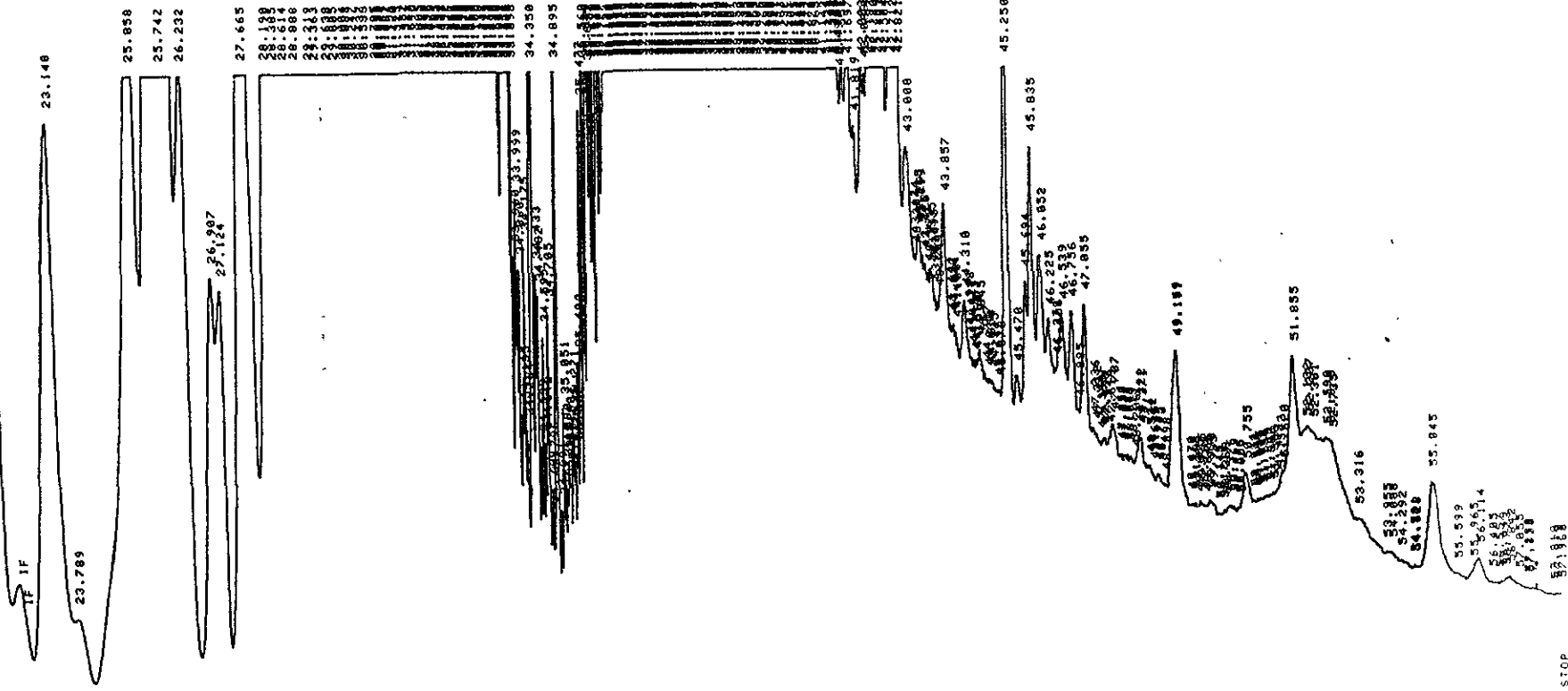
The chromatographs of soil and groundwater sample analyses for the above referred site.

Signed: _____



cc: Ms. Lynn Nightigale

58723
Diesel



STOP

Closing signal file MISCNAL .BNC

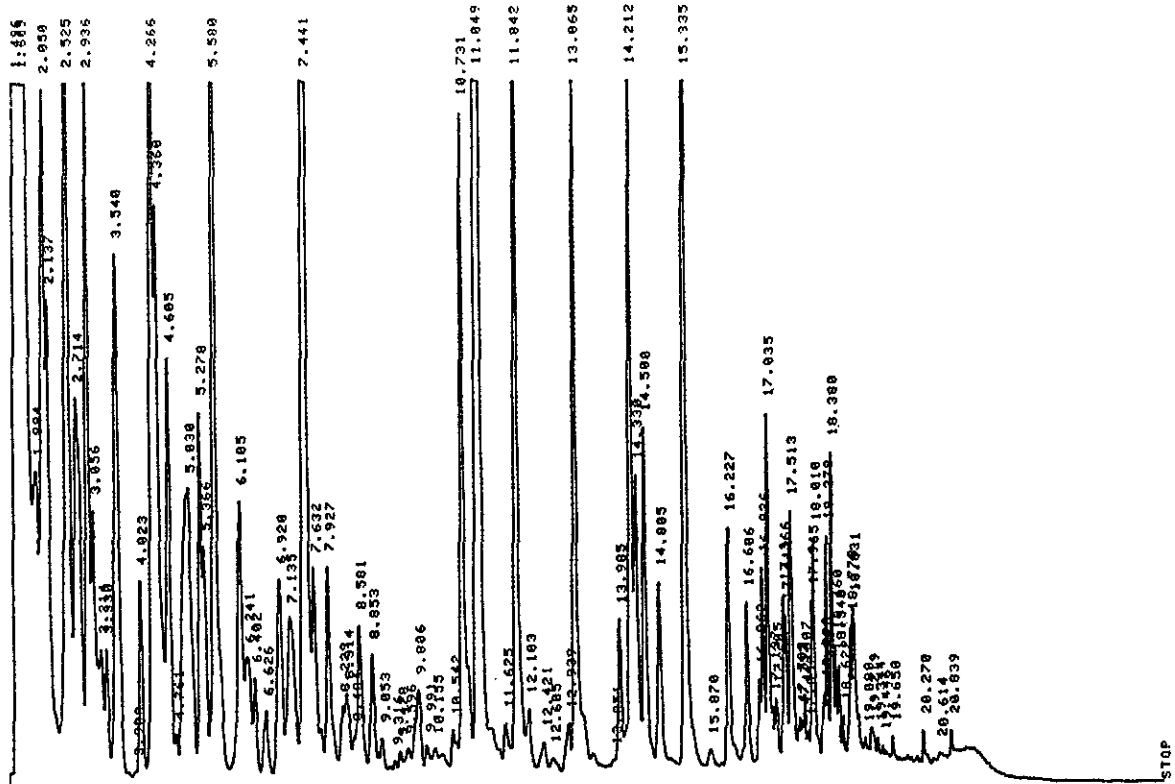
RUN# 939 / NOV 18, 1995 20:04:46

SAMPLE# 16

SIGNAL FILE MISCNAL.BNC

ESTO-AREA	RT	AREA TYPE	CAL#	AMOUNT
	23.148	BH		85.795
	23.789	HH		1.597
	24.868	PH		125.491

Gas standard
11/20



STOP

Closing signal file M: SIGNAL.BNC

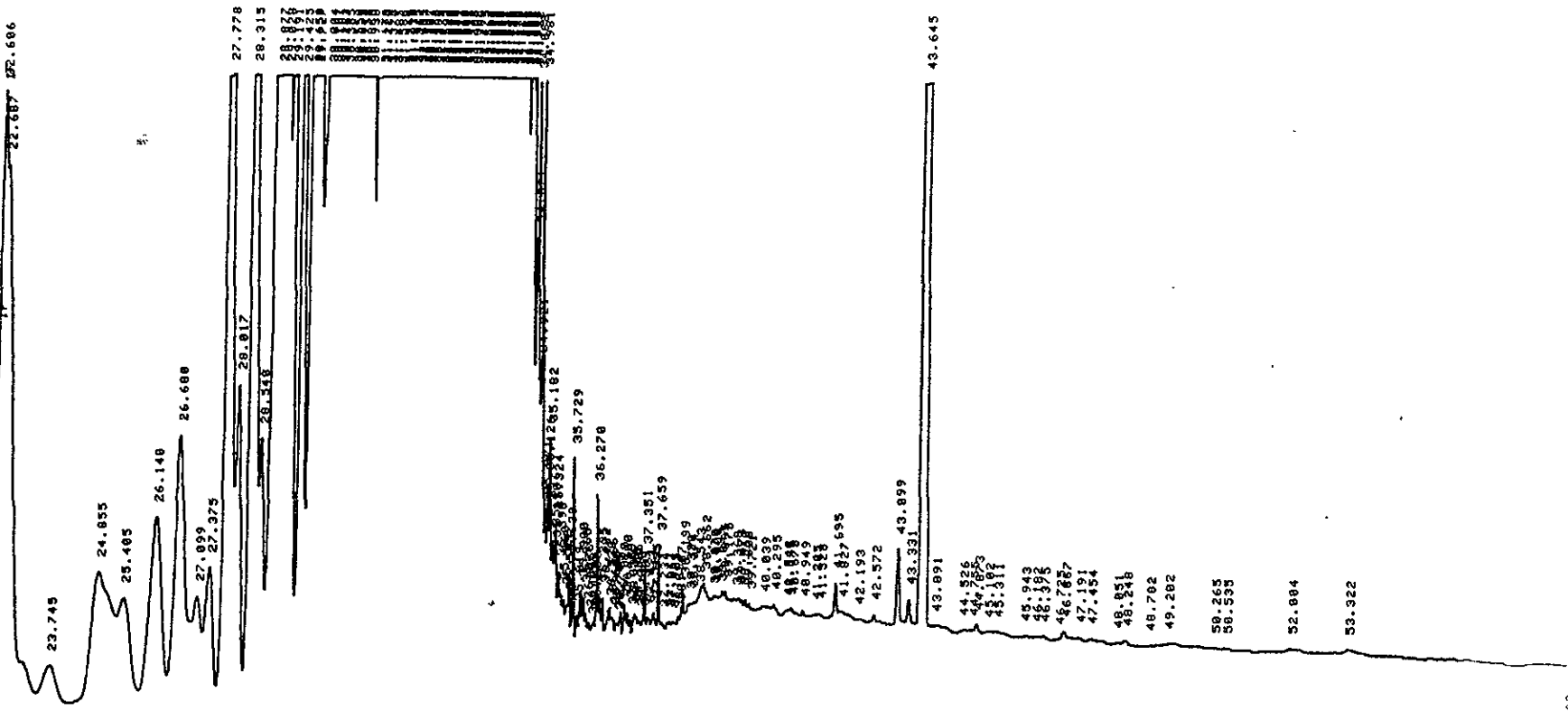
RUN# 12661 NOV 20, 1995 01:48:02

METHOD NAME: MISTEXFID2.MET

SIGNAL FILE: M: SIGNAL.BNC

ESTD-AREA	RT TYPE	AREA	WIDTH	HEIGHT	CAL#	AMOUNT	NAME
1.496	HH	1686214	.120	234237		472.148	
1.609	HH	1379340	.130	176474		386.215	
1.884	HH	219665	.129	28378		61.586	
2.050	HR	406856	.109	62237		113.696	
2.137	HH	245983	.094	43557		68.853	
2.525	HH	532969	.125	71178		149.231	
2.714	HH	319754	.151	34814	8	226.490	MTBE
3.056	HR	155347	.105	24829		43.665	
3.214	HH	78799	.095	12444		19.824	
3.338	HH	67838	.098	12438		18.771	
3.548	HH	332377	.117	47475		93.866	
3.908	HH	9294	.093	1655		2.582	
4.023	HH	94515	.083	18689		25.454	
4.266	HH	435478	.077	94218	1	137.696	BENZENE
4.368	HR	339787	.109	31965		95.118	
4.505	HH	226537	.099	38383		63.438	
4.761	HH	23224	.088	4858		6.583	
5.038	HH	369469	.230	26782		103.451	
5.278	HH	152384	.076	33618		42.836	
5.366	HH	113813	.087	21576		31.544	
5.588	HH	556635	.094	98448	2	134.594	o-xylene-TFTX
6.105	HH	191879	.124	25618		53.582	
6.241	HH	94582	.135	11683		26.461	
6.402	HH	57177	.097	9871		16.818	
6.626	HH	55262	.133	6981		15.473	
6.928	HH	144558	.130	18529		48.584	
7.135	HR	174419	.192	15135		48.937	
7.441	HH	1468566	.076	322668	3	478.529	TOLUENE
7.632	HH	117588	.108	13998		32.928	
7.750	HH	116211	.105	13701		18.100	

58720
Diesel



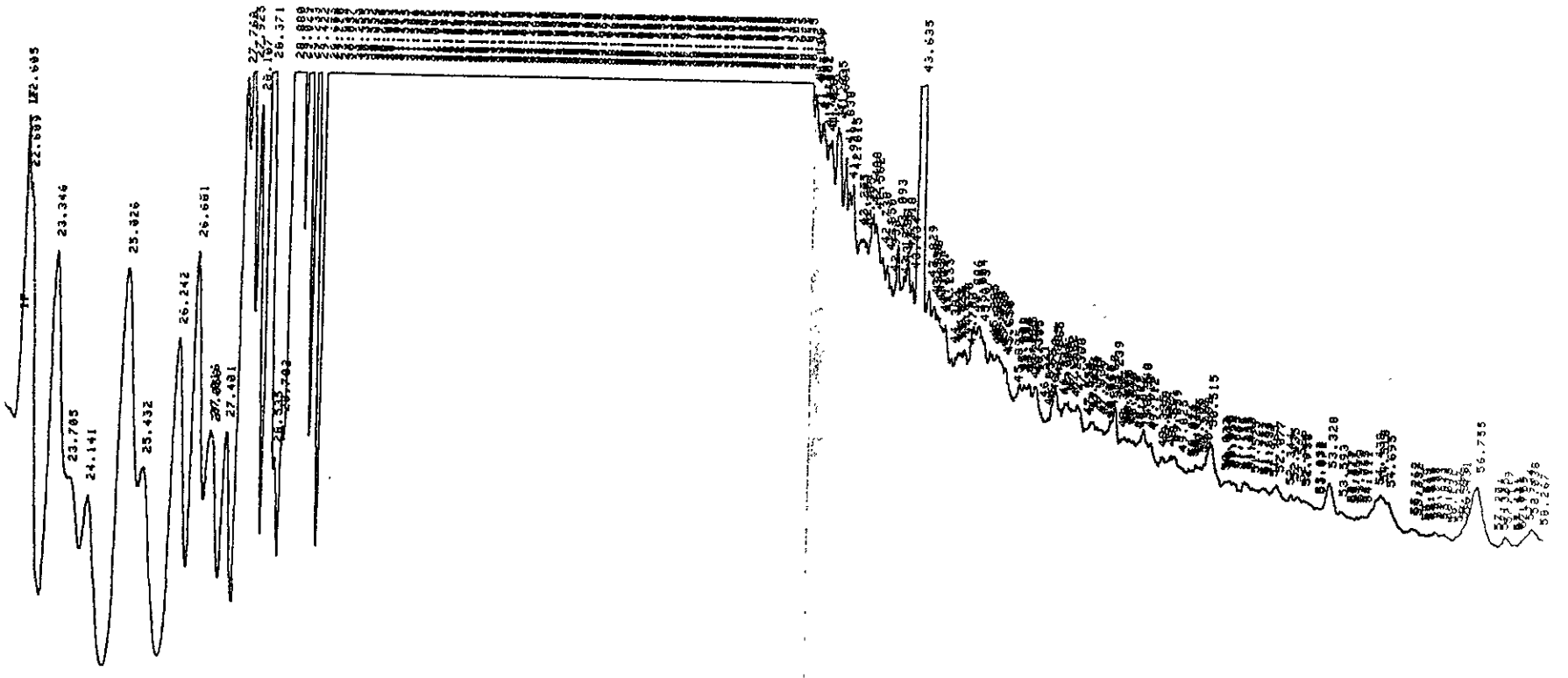
STOP

Closing signal file MISCAL.BNC
 RUN# 2607 NOV 15, 1995 23:53:06
 METHOD NAME: MIDC.NET SAMPLE# 8

SIGNAL FILE: MISCAL.BNC
 ESTO-AREA

PT	AREA	TYPE	CAL#	AMOUNT
22.606	31697	BH		9.787
22.687	20264	HP		5.674
23.74K	15625	PP		4.375

5871
Diesel



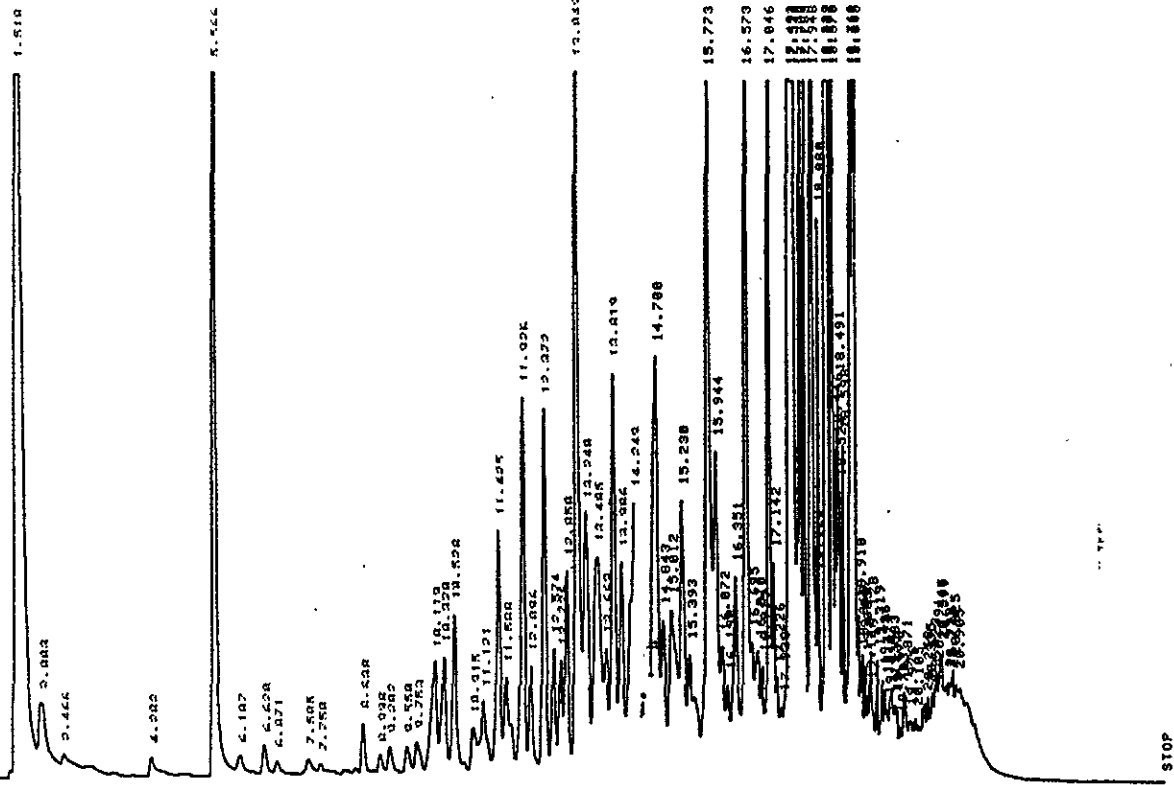
STOP

Closing signal file: HISIGNAL .BNC
 File# 2624 NOV 15 1995 19:29:18
 METHOD NAME: MDC.NET SAMPLE# 3

SIGNAL FILE: HISIGNAL.BNC

ESTD-AREA	RT	AREA TYPE	CAL#	AMOUNT
	22.605	BH		7.923
	22.669	HP		7.362
	23.312	FL		48.577

58723
GASSTEX



Closing signal file MISIGNAL .BNC

RUN# 12654 NOV 19, 1995 19:56:22

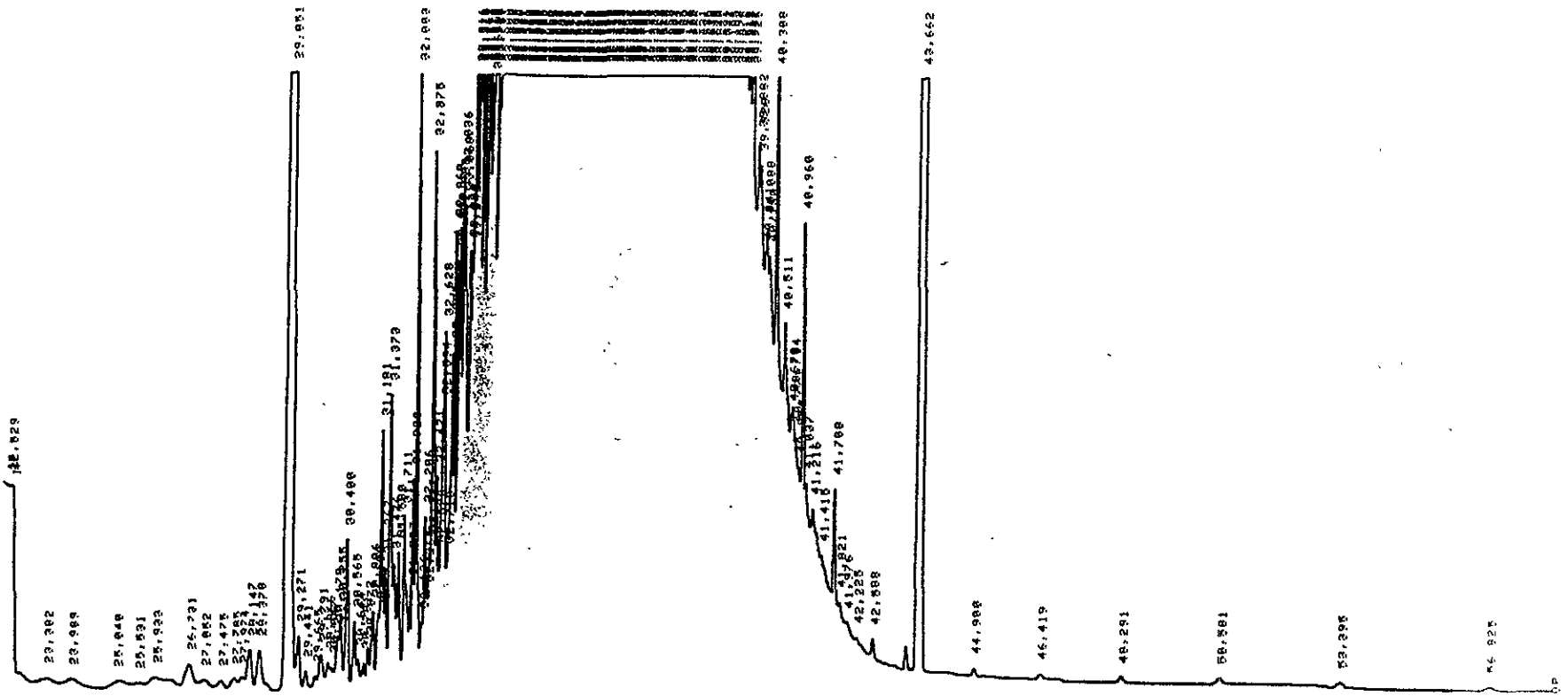
METHOD NAME: MIXTEXFID2.MET

SIGNAL FILE: MISIGNAL.BNC

ESTD-AREA

RT	TYPE	AREA	WIDTH	HEIGHT	CAL#	AMOUNT	NAME
1.518	PK	874879	.163	89591		244.966	
2.863	HH	37228	.248	6745		27.822	
2.466	HH	37328	.395	2839		18.438	BENZENE
4.282	HH	12461	.115	1880	1	3.948	BENZENE
5.566	HH	488618	.877	88800	2	98.884	m,p-xylene
6.167	HH	19446	.173	1873		5.445	
6.628	HH	19783	.114	2893		5.539	
6.871	HH	12384	.158	1381		3.443	
7.585	HH	16881	.172	1537	3	5.136	TOLUENE
7.758	HH	8665	.127	1139		2.426	
8.538	HH	27782	.958	4723		7.779	
8.938	HH	12547	.112	1867		3.513	
9.282	HH	28378	.131	2583		5.784	
9.558	HH	28287	.132	2565		5.688	
9.753	HH	24962	.137	3834		6.989	
10.119	HH	91348	.148	18271		25.375	
10.328	HH	72943	.115	18582		28.424	
10.538	HH	87897	.181	14387		24.387	
10.915	HH	32869	.124	4293		8.977	
11.121	HH	61858	.154	6682	5	28.349	m,p-xylene
11.423	HH	127472	.997	21943		35.692	
11.588	HH	54762	.182	8918		15.333	
11.926	HH	186548	.892	33798	6	62.889	o-xylene
12.096	HH	59128	.899	9915		16.554	
12.372	HH	128877	.987	32224		47.846	
12.574	HH	62216	.898	11488		17.428	
12.726	HH	55631	.889	18469		15.577	
12.858	HH	92224	.987	18899		26.663	
13.045	HH	363271	.887	78923	7R	143.248	4BFX
13.248	HH	179868	.128	23426		58.361	
13.485	HH	196335	.168	19493		55.888	
13.643	HH	75362	.118	11412		21.181	

GC 2
 Paved
 Standard
 11/17/18



C:\DATA\117001\FILE\MISIGNAL.BNC

DATE 2522 NOV 17, 1995 10:46:54

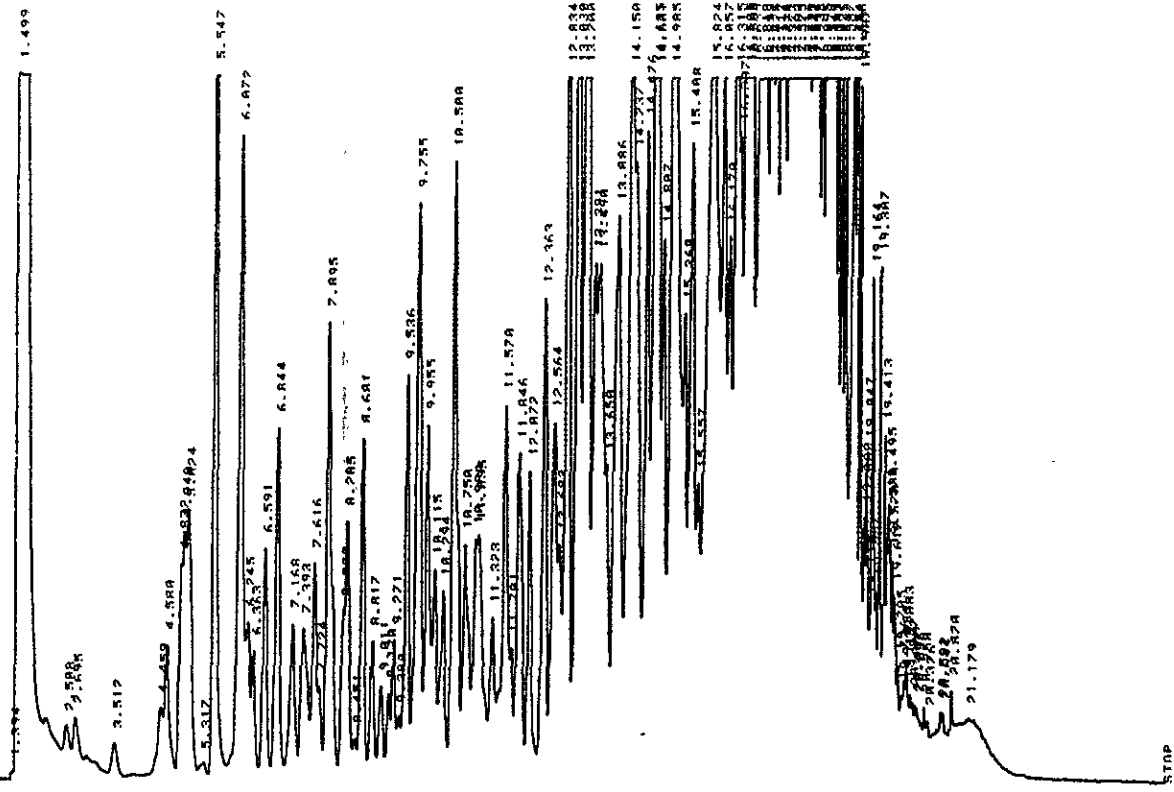
METHOD NAME1 MIDC.MET SAMPLE# 5

SIGNAL FILE1 MISIGNAL.BNC

ESTD-AREA

PT	AREA	TYPE	CALN	AMOUNT
22,529	10662	BP		3.069
23,592	2116	HP		.552
24,999	2465	PP		.838

58718
11/17



Closing signal file MISTGAL.RMC

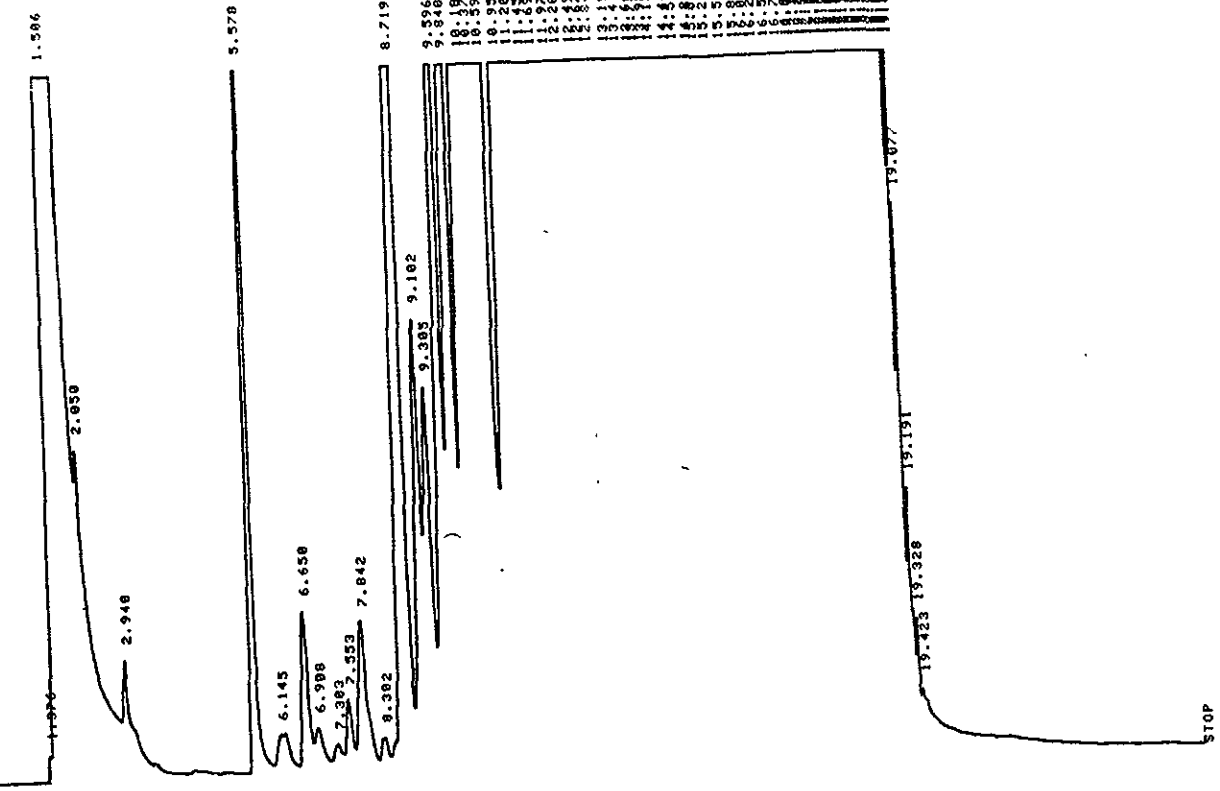
RUHS 12549 NOV 17. 1995 01122100

METHOD NAME: MISTEXPTD2.MET

SIGNAL FILE: MISTGAL.RMC
FSTD-ORFA

RT	TYPE	AREA	WIDTH	HEIGHT	COLS	AMOUNT	NAME
1.499	HH	1827164	.194	156899		511.686	
2.598	HH	47006	.168	4889		12.162	
2.835	HH	55907	.169	5536	R	48.167	MTRF
3.517	HH	31266	.159	3283		8.746	
4.459	HH	53728	.139	6462	1	16.986	RPN7FNF
4.589	HH	86924	.119	12188		24.349	
4.822	HH	80117	.069	19336		22.423	
4.948	HH	188481	.081	22263		38.325	
5.024	HH	178763	.124	23951		58.854	
5.317	HH	15881	.167	1584		4.447	
5.447	HH	41888	.088	8787	2	181.288	A.A.A.TETY
5.872	HH	482863	.117	52384		112.828	
6.245	HH	92938	.189	14159		26.823	
6.763	HH	62826	.089	11683		17.367	
6.891	HH	131727	.186	28696		36.884	
6.884	HH	283584	.188	31456		57.884	
7.168	HH	111684	.133	13989		31.222	
7.397	HH	134268	.165	13494		32.597	
7.616	HH	118623	.182	18428	3	17.486	
7.724	HH	38967	.079	8419		38.886	TOLIFNF
7.885	HH	282933	.128	48228		11.191	
8.288	HH	62185	.068	18273		82.821	
8.288	HH	148442	.187	21168		41.566	
8.451	HH	28187	.088	3254		5.638	
8.681	HH	124129	.095	38325		48.278	
8.817	HH	78788	.188	12467		21.196	
8.811	HH	87938	.113	8541		18.228	
9.178	HH	38938	.083	2838		18.888	
9.271	HH	64875	.085	12688		18.193	
9.388	HH	28828	.072	5886		2.331	
9.536	HH	28833	.084	38217		58.333	

58720
BASBEX



Closing signal file M1SIGNAL.BNC

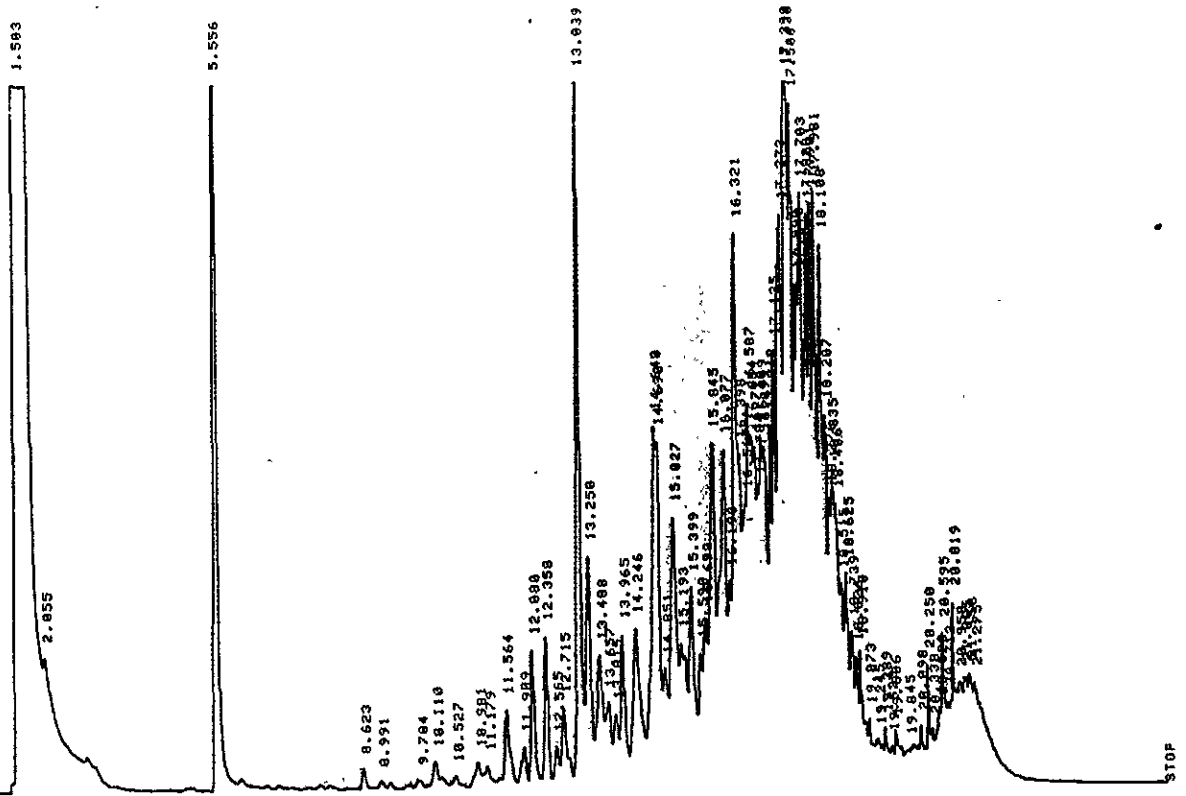
RUN# 12746 NOV 22, 1995 05:38:19

METHOD NAME: M1TEXTFID2.NET

SIGNAL FILE: M1SIGNAL.BNC

ESTD-AREA	RT	TYPE	AREA	WIDTH	HEIGHT	CALC#	AMOUNT	NAME
1.376	HH	9569	.865	2442		2.679		
1.566	HH	17364288	.159	1822855		4861.981		
2.858	HH	341635	.193	29514		95.658		
2.948	HH	153596	.239	10723		43.887		
5.578	HH	422178	.882	85857	2	182.883		m.a.s-TFTZ
6.145	HH	29173	.134	3637		8.168		
6.658	HH	135853	.156	14515		38.839		
6.988	HH	53183	.218	4124		14.891		
7.303	HH	36161	.223	2788		10.125		
7.553	HH	68769	.152	6684	3	19.478		TOLUENE
7.842	HH	178985	.218	13654		58.116		
8.382	HH	35186	.186	3153		9.838		
8.719	HH	1424919	.155	152939		398.723		
9.182	HH	366381	.152	48852		182.587		
9.385	HH	33552	.164	34889		93.295		
9.596	HH	836296	.139	18691		234.163		
9.848	HH	1161494	.154	12318		325.218		
10.183	HH	4174848	.198	351226		1168.955		
10.375	HH	4498178	.134	558309		1257.247		
10.598	HH	4488365	.141	528229		1232.182		
10.957	HH	1628556	.131	286373	4	534.639		ETHYLENHEZENE
11.284	HH	4141732	.258	267276	5	1362.636		m.p-XYLENES
11.456	HH	528819	.182	181165		173.829		
11.691	HH	5171365	.182	472378		1448.838		
11.977	HH	4118176	.178	384634	6	1366.222		p-XYLENE
12.288	HH	10314128	.148	1227724		3887.954		
12.493	HH	6663987	.138	852862		1865.919		
12.671	HH	3737154	.128	484893		1046.483		
12.843	HH	2228813	.185	558198		2824.867		
13.192	HH	13519448	.181	1244266	7R	5244.192		48FBY
				1798978		5814.272		

587109
11/17/84



Closing signal file MISIGNAL .BNC

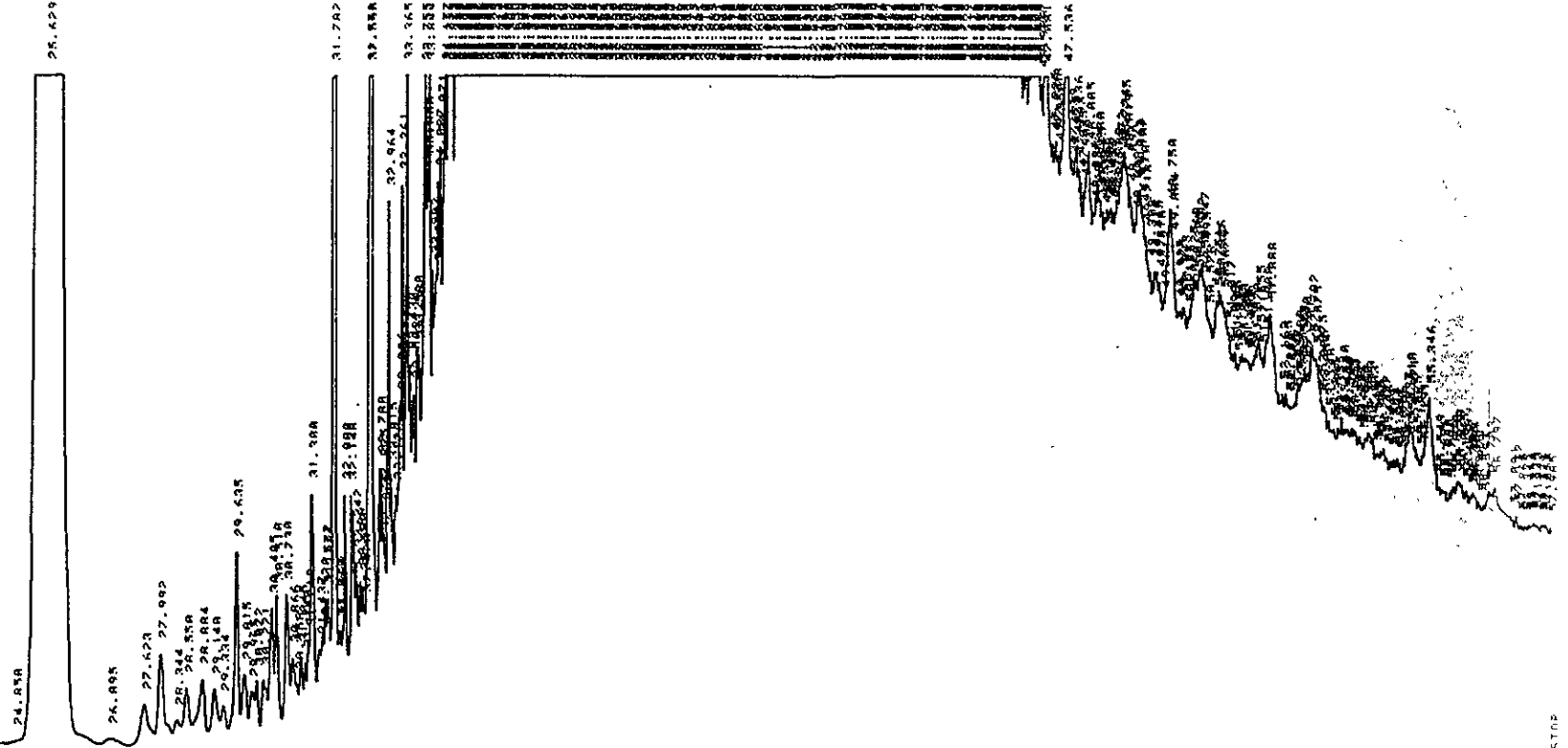
RUN# 12560 NOV 17, 1995 08:08:07

METHOD NAME: MIBTEKFID2.MET

SIGNAL FILE: MISIGNAL.BNC

ESTD-AREA	RT TYPE	AREA	WIDTH	HEIGHT	CALS	NAME
1.583	HH	5345389	.197	431569		1496.789
2.855	HH	244164	.338	12827		68.366
5.556	HH	397661	.888	83818	2	96.154 m.p.a-TFTx
8.623	HH	13888	.185	2878		3.665
9.784	HH	9927	.171	978		2.862
10.118	HH	23357	.145	2585		2.788
10.527	HH	13341	.175	1273		6.268
10.981	HH	22214	.149	2483	5	3.735 m.p.-XYLENES
11.179	HH	25477	.178	2118		6.294
11.564	HH	55866	.128	7148		15.492
11.989	HH	28927	.128	3764	6	9.615 o-XYLENE
12.088	HH	69223	.894	12386		19.578
12.358	HH	75228	.892	13682		21.364
12.565	HH	23831	.184	3834		6.673
12.715	HH	47227	.118	7217		13.364
13.039	HH	337861	.889	63129	7R	131.856 48FBX
13.258	HH	146219	.118	28687		48.941
13.488	HH	102492	.144	11899		28.698
13.657	HH	65926	.142	7753		18.459
13.815	HH	46138	.115	6714		12.919
13.965	HH	95495	.116	13681		28.739
14.246	HH	165793	.194	14217		46.422
14.546	HH	228398	.114	32262		61.711
14.698	HH	156169	.084	38895		43.727
14.851	HH	78862	.118	18788		19.841
15.027	HH	221439	.153	24886		62.803
15.193	HH	67799	.088	12505		18.984
15.399	HH	135868	.126	17829		37.825
15.598	HH	69817	.097	12881		19.549
15.698	HH	68825	.098	15127		24.871

587210
Dietel



STOP

CLOSING SIGNAL FILE NISTCHG1 .RMC

PUNCH 937 NOV 18, 1985 1412111

CONPIER 14

SIGNAL FILE NISTCHG1 .RMC

BT	AREA	TYPE	FAIL	AMOUNT
R1A	187	PV		.688
R2	845	HH		.188
R4	858	HH		.366
R5	2482141	HH		694 999
R6	858	HH		.679
R7	858	HH		.1 994
R8	1603	UU		1 108

6c-le
Standard
Diesel

24.762 25.525

26.643
27.586
28.489
29.352
29.925
30.272

30.861
31.129
31.565
31.776
32.237

32.884
33.748
34.865
39.748
40.162

40.488
40.865
41.111
41.695
42.249
42.555

45.765
45.298
47.845
49.192

51.478
51.825

55.005

STOP

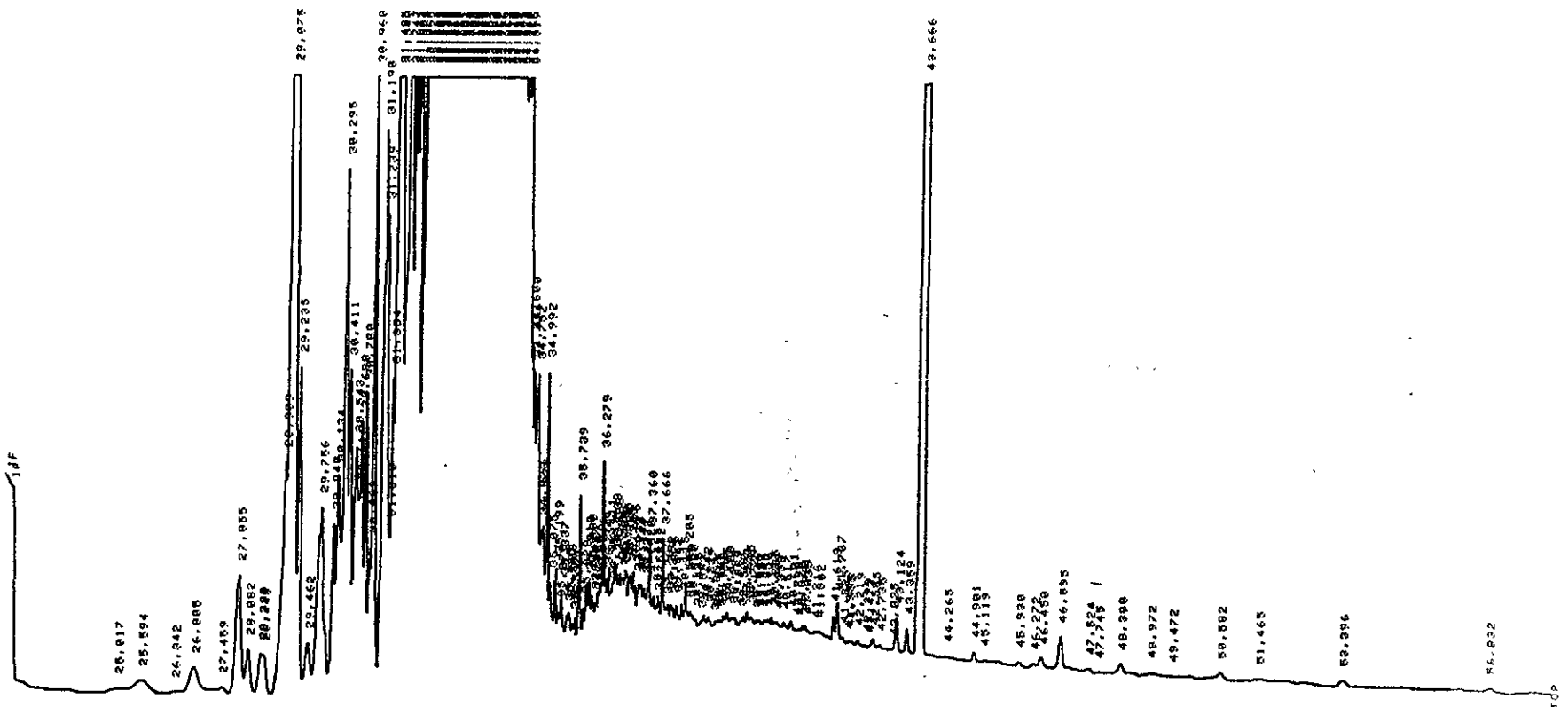
Closing signal file MISIGNAL.BNC

PUN# 931 NOV 18, 1995 88136111
SAMPLE# 8

SIGNAL FILE: MISIGNAL.BNC

ESTD-AREA	RT	AREA	TYPE	CAL#	AMOUNT
	24.762	415	VH		.116
	25.525	2443288	HH		684.658
	26.145	1993	HH		.558
	26.235	5964	HH		1.678
	26.657	237	HH		.866
	26.745	777	HH		.218
	27.172	719	HH		.281
	27.355	787	HH		.198
					1.845

58719
 ① Disc
 11/17-18



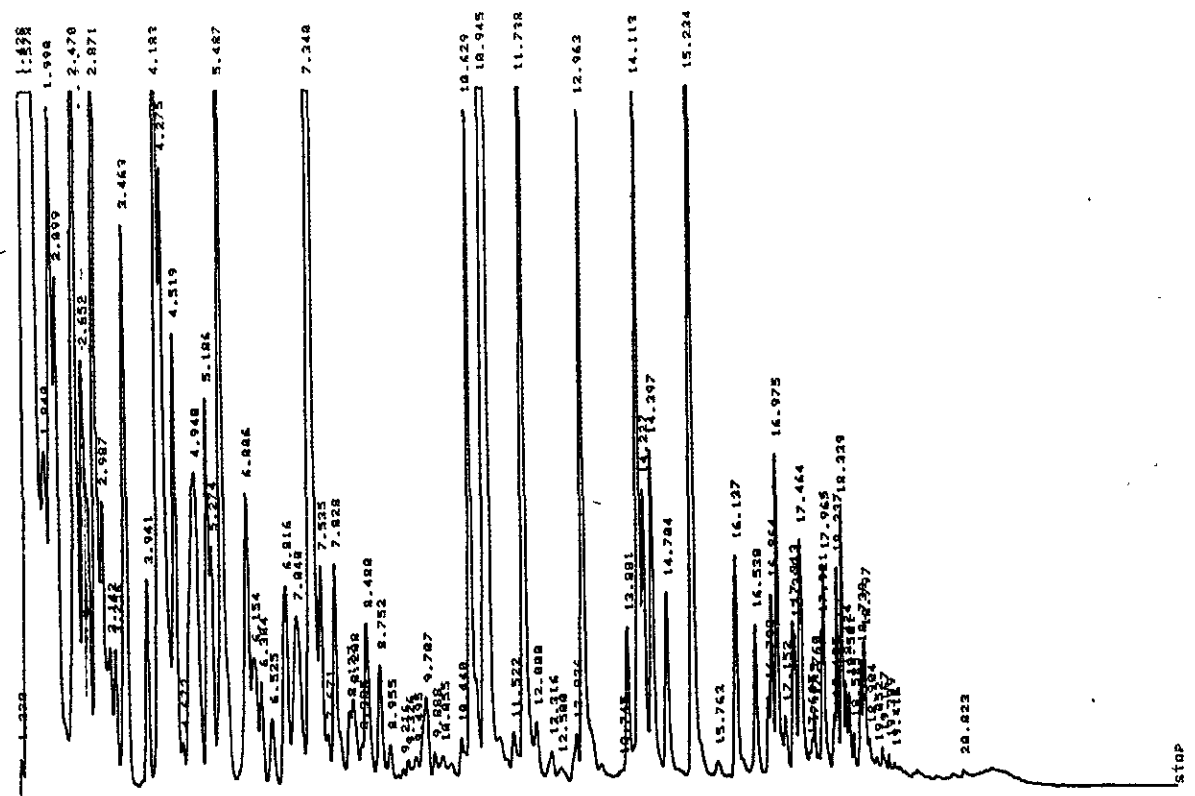
STOP

CLOSING #1001 FILE MISCAL .BNC
 RUN# 2620 NOV 17, 1995 12166100
 METHOD NAME: MIDC.MET SAMPLE# 6

SIGNAL FILE: MISCAL.BNC
 ESTD-AREA

PT	AREA	TYPE	CALC	AMOUNT
24.017	1561	BN		1.437
24.434	7298	HN		2.183
26.142	372	VN		0.076

Gas standard
11/17



stop

Closing external file MISCAL .BNC
 RUN 12543 NOV 14, 1995 21129439

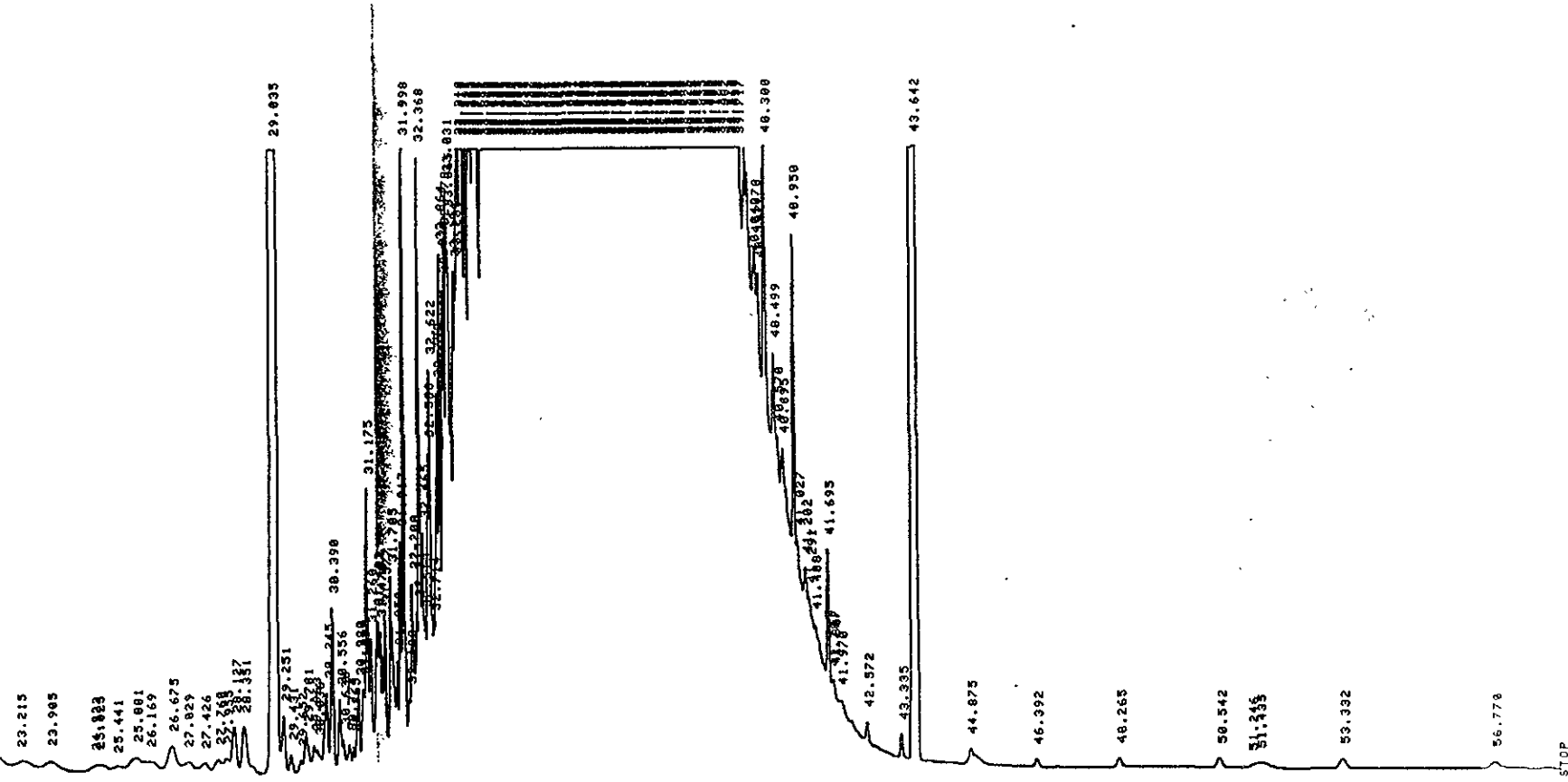
METHOD NAME: MISTEXFID2.MET

SIGNAL FILE: MISCAL.BNC

ESTD-AREA

RT	TYPE	AREA	WIDTH	HEIGHT	CALLS	AMOUNT	NAME
1.428	HH	11254	.848	3980		3.152	
1.998	HH	1116792	.182	188876		312.782	
2.470	HH	245197	.153	28914		68.255	
2.871	HH	419523	.114	46358		117.466	
2.899	HH	254923	.892	88787		157.146	
2.470	HH	561236	.116	28981	8	227.458	MTBE
2.871	HH	326227	.877	26415		44.435	
2.987	HH	158874	.188	13331		21.616	
3.142	HH	77288	.897	13197		19.447	
3.256	HH	69452	.828	58811		96.884	
3.463	HH	348814	.112	19244		29.512	
3.941	HH	185493	.881	97983		125.338	BENZENE
4.192	HH	447636	.876	56882	1	112.343	
4.275	HH	358455	.187	41388		66.528	
4.519	HH	237578	.896	4392		6.222	
4.673	HH	24399	.882	28888		188.788	
4.948	HH	288538	.224	35616		45.917	
5.186	HH	163988	.877	22317		31.267	
5.274	HH	111668	.882	27848	2	138.226	3,3,4,4-TTX
5.487	HH	538569	.894	95817		54.253	
6.816	HH	194821	.128	12412		20.251	
6.154	HH	188895	.135	18233		16.897	
6.384	HH	57491	.894	7872		15.726	
6.525	HH	56164	.132	18744		48.566	
6.814	HH	145234	.129	15975		59.817	
7.848	HH	181482	.189	234523	3	482.586	TOLUENE
7.348	HH	1885950	.875	28588		34.328	
7.535	HH	122244	.899	4864		8.381	

GC-2
 Standard
 11-15 Diesel



Closing signal file MISIGNAL .BNC

RUN# 2601 NOV 15, 1995 15:22:29

METHOD NAME: MIDC.NET SAMPLE# 2

SIGNAL FILE: MISIGNAL.BNC

RT	AREA	TYPE	CAL#	AMOUNT
23.215	547	YH		.153
23.905	3821	HP		1.078
24.922	1209	PH		.339
25.825	3857	HH		.856
				.751

58722
Diesel

