

RECEIVED

By Alameda County Environmental Health at 11:56 am, Dec 31, 2014



Aspire Public Schools
1001 22nd Avenue
Oakland, California

PUBLIC PARTICIPATION PLAN

Former Pacific Electric Motors Site
1009 66th Avenue
Oakland, California

December 2014

CONTENTS

1.0	INTRODUCTION.....	1-1
1.1	Purpose	1-1
1.2	Plan Contents and Organization	1-1
1.3	Site Background and Project Description	1-1
1.4	Recommended Public Participation Activities.....	1-2
2.0	SITE AND COMMUNITY DESCRIPTION	2-1
2.1	Site Location, Description and Surrounding Land Uses	2-1
2.2	Site History, Contaminants of Concern and Past Site Activities	2-1
2.3	Additional Environmental Work	2-2
2.4	Proximity of Other CA/US EPA Projects.....	2-6
2.5	Proximity to Sensitive Receptors	2-7
2.6	City of Oakland.....	2-8
2.7	Aspire Public Schools and Aspire Golden State College Preparatory Academy	2-10
2.8	Local Organizations.....	2-11
2.9	Local Media	2-11
2.10	Nearby Residential Population.....	2-11
3.0	LOCAL AWARENESS AND INTEREST	3-1
3.1	History of Community Involvement.....	3-1
3.2	Community Meetings/Interviews	3-1
3.3	Interview Responses	3-1
4.0	PUBLIC PARTICIPATION ACTIVITIES	4-1
4.1	Purpose and Objectives of Plan	4-1
4.2	Public Participation Activities	4-1
4.3	ACEH and US EPA Contacts	4-1
4.4	Mailing List and Email Distribution List.....	4-2
4.5	Information Repository.....	4-2
4.6	Prepare and Distribute Project Updates.....	4-2
4.7	Prepare and Distribute Work Notices.....	4-2
4.8	Community Project Briefings	4-3
4.9	Additional Activities	4-3
4.10	Schedule of Public Participation.....	4-3

TABLES

Table 1 - Active Investigation/Cleanup Sites in Oakland (Other CA/US EPA Sites in Oakland)

Table 2 - Sensitive Receptors in Oakland

Table 3 - Oakland Population Details

Table 4 - Aspire Golden State College Preparatory Academy Schedule

Table 5 - Schedule of Project Activities & Public Participation

FIGURES

Figure 1 - Site Area Map

Figure 2 - Site Area Photos

Figure 3 - Map of Sensitive Receptors

APPENDICES

Appendix A - Previous Outreach Materials

Appendix B - Interview Participants/Questions

Appendix C - Key Contact List

1.0 INTRODUCTION

1.1 Purpose

Aspire Public Schools prepared this Public Participation Plan (PPP) for the former Pacific Electric Motors (PEM) facility located at 1009 66th Street in Oakland, California (site). The purpose of this PPP is to:

- Document local community interest, views and concerns related to environmental investigation and cleanup activities; and
- Identify specific public participation activities that will facilitate community involvement in the decision-making process for the site.

1.2 Plan Contents and Organization

This PPP includes a description of the site, background information, and a description of the surrounding community and local organizations that serve the area (Section 2); a summary of community members' issues and potential concerns (Section 3); and specific public participation activities to be conducted during the site investigation and cleanup process (Section 4). Appendix A contains previous outreach materials; Appendix B contains a list of interview questions and participants; and Appendix C contains a key contact list for this project.

Aspire Public Schools will update this plan, as necessary, to reflect changes in the project or in the surrounding community. Such changes could be in relation to project plans, scheduling, or local demographic, socioeconomic or land use policy changes.

1.3 Site Background and Project Description

The site is located on the western side of 66th Avenue in Oakland and is two and one-half acres in size. PEM owned and operated the site from 1948 to 2001 for manufacturing and repairing of industrial equipment. These activities resulted in the presence of chemicals in soil and groundwater including polycyclic aromatic hydrocarbons (PAHs), petroleum hydrocarbons, volatile organic compounds (VOCs), total petroleum hydrocarbons (TPH), polychlorinated biphenyls (PCBs) and metals. Several remedial actions have been conducted to address contamination including the removal of impacted soil, groundwater, and an underground gasoline storage tank and the installation of asphalt concrete and landscaping. Aspire Golden State College Preparatory School (Aspire Golden State School) was built on-site in 2011 and existing roadways, sidewalks, parking areas, buildings and planter areas serve as a cap preventing human exposure to remaining PCB contamination in soil.

Aspire Public Schools, Aspire Golden State School's parent organization, is conducting additional investigation and cleanup activities at the site under the oversight of the Alameda County Department of Environmental Health (ACEH) and the US Environmental Protection Agency (US EPA). These activities include soil gas testing in the crawl spaces under an existing building to confirm that chemicals in the soil are not impacting the quality of indoor air and testing of soil in an area where a new gymnasium/lunch room is slated to be built to determine how to safely manage contaminated

soil during construction. ACEH and US EPA will provide approval of all work conducted and will coordinate the involvement of other government agencies, including the City of Oakland and the Bay Area Regional Water Quality Control Board (RWQCB), as necessary.

1.4 Recommended Public Participation Activities

A number of public participation activities are included in this PPP to ensure that the Aspire Golden State School community understands and has the opportunity to provide informed input on environmental site activities. Outreach activities include staff and parent briefings, distribution of project information in advance of field work and at key project milestones, and maintaining a single point-of-contact for individuals to call for more information.

2.0 SITE AND COMMUNITY DESCRIPTION

2.1 Site Location, Description and Surrounding Land Uses

The site is a 2.5-acre property located on the western side of 66th Avenue, between East 14th Street (to the north) and San Leandro Street (to the south), in Oakland, California (see figure 1). The property is home to Aspire Golden State School, a small public charter school serving low income families. The area surrounding Aspire Golden State School includes a mixture of commercial, industrial, government and multi-family affordable housing developments. Aspire Golden State School occupies approximately 1.4 acres and consists of six two-story pre-fabricated buildings; an asphalt parking area, recreation area, driveways and walkways; and adjacent landscaped areas. The site is bound by a residential development to the north, Oakland Fire Department Station 29 to the east, an industrial business center to the south and a container freight and consolidation operation to the west.

2.2 Site History, Contaminants of Concern and Past Site Activities

PEM owned the site from 1948 to 2001 and conducted various activities on the property including manufacturing of specialty magnets, power supplies and components, and repairing motors, generators, transformers and magnets. These activities resulted in the presence of chemicals in soil and groundwater beneath the site. Modad Properties, LLC (Modad) purchased the property from PEM in 2001 and Aspire Public Schools purchased it from Modad in 2008; however, PEM, Modad and Aspire Public Schools are all considered parties responsible for addressing remaining site contamination.

Since the early 1990s, several phases of environmental investigation and remediation work were implemented at the site to determine the extent of and address contamination in soil, soil gas (air in between soil particles) and groundwater. Chemical residues identified in soil, soil gas and groundwater at the site include PAHs, petroleum hydrocarbons, VOCs, TPH, PCBs and metals. Past remedial activities at the site include the removal of 400 cubic yards of PCB-impacted soil in 1992/1993; removal of a 2,000-gallon gasoline underground storage tank and associated structures in 1995; removal of 1,500 cubic yards of soil and 116,000 gallons of groundwater containing petroleum hydrocarbons in 1995; removal of additional petroleum-impacted soil and groundwater in 2002; removal of soil containing TPH, VOCs PCBs and metals in 2009/2010; and installation of asphalt, concrete and landscaping in 2010. All PEM buildings and structures were demolished in 2009/2010. Remediation efforts made the property a suitable and safe location for a school, and subsequently, Aspire Golden State School was built on-site in 2011.

A soil gas investigation was conducted under the oversight of ACEH in August 2014. The purpose of the investigation was to assess the potential for vapor intrusion to occur within the proposed gymnasium. The results of the investigation indicated that soil gas concentrations (primarily benzene) are present above health based screening criteria and that vapor intrusion mitigation is appropriate. As such, a vapor intrusion mitigation system was designed in accordance with regulatory guidance and will be installed during building construction (as described further below). In parallel, a cap modification plan was developed to document changes to the surface that are associated with the construction of the gymnasium (e.g., replacing the asphalt cap with the building

foundation). The system design and cap modification plan are undergoing regulatory review. Building construction will proceed following regulatory approval.

2.3 Additional Environmental Work

In January 2015, samples of soil gas and air within the existing on-site Building 200 and its crawl space will be collected to confirm that low levels of chemicals remaining in groundwater and soil are not impacting indoor air quality. This work will be conducted under the oversight and approval of ACEH.

Aspire Golden State School will be constructing a new 9,300-square foot gymnasium/lunch room facility in 2015. A vapor intrusion mitigation system will be installed within the foundation of the new gymnasium/lunch room to prevent potential contact with soil gas vapors at concentrations that may be harmful to human health. At the same time soil gas and air samples will be collected from Building 200, soil samples will be collected from beneath the asphalt where the gymnasium/lunch room will be built to aid in the design of the vapor intrusion mitigation system. Sampling in preparation for building the new gymnasium/lunch room and the installation of the system will be conducted under the oversight and approval of US EPA and ACEH. All sampling work will be conducted when school is not in session.

Based on community interview responses, Aspire Golden State School staff and parents strongly support the construction of the new gymnasium/lunch room, which provides many benefits including state-of-the-art recreational amenities that will allow students to remain on-site for sporting events and a lunch room that will free up additional classrooms and allow 50 to 75 additional students to attend the school.

Figure 1 – Site Area Map



Figure 2 – Site Area Photos



Aspire Golden State School



Affordable housing complex south of the site



Affordable housing complex northeast of the site



Industrial business center west of the site

2.4 Proximity of Other CA/US EPA Projects

Table 1 presents other active environmental investigation and cleanup projects within a one-mile radius of the site:

Table 1 – Active Investigation/Cleanup Sites in Oakland

Site Name	Status	Lead Agency	Type	Address	Miles from Site
AAA Equipment Company	Open - Site Assessment	RWQCB	Other	745 50th Avenue	1
AC Transit	Open - Remediation	RWQCB	Lust	1100 Seminary Avenue	.4
Acts Community Development	Open - Site Assessment	RWQCB	Lust	1001 77th Avenue	.56
Acts Full Gospel Church & Industrial Properties	Open - Site Assessment	RWQCB	Other	8410 Amelia Street	.89
Allied Crane Maintenance	Open - Site Assessment	RWQCB	Lust	727 66th Avenue	.41
A-Paratransit	Open - Site Assessment	RWQCB	Lust	829 54th Avenue	.75
Arco #472 / Plucky Liquors	Open - Verification Monitoring	RWQCB	Lust	6415 International Boulevard	.3
Coliseum Way Properties	Open - Site Assessment	RWQCB	Other	5200 Coliseum Way	.82
D Merlino & Sons	Open - Site Assessment	RWQCB	Other	989 81st Avenue	.77
Dream Ride Limousine Service	Open - Assessment & Interim Remedial Action	RWQCB	Lust	5330 Foothill Boulevard	.96
Economy Lumber	Open - Site Assessment	RWQCB	Lust	6233 San Leandro Street	.31
Elmhurst Anodizing & Manufacturing	Refer: Other Agency	ACEH	Evaluation	910 81st Street	.76
Foreman Property	Open - Site Assessment	RWQCB	Other	5105 East 8th Street	.87
Former Echco Sales Company	Open - Assessment & Interim Remedial Action	RWQCB	Other	6161 Coliseum Way	.62
General Electric - Oakland	Active	DTSC	State Response	5441 International Boulevard	.61
Grimit Auto Repair & Service	Open - Verification Monitoring	RWQCB	Lust	1970 Seminary Avenue	.64
Hertz-Penske	Open - Site Assessment	RWQCB	Lust	725 Julie Ann Way	.6
J&M Auto Body Shop	Resource Conservation and Recovery Act (RCRA)	DTSC	Evaluation	912 76th Avenue	.51

Malibu Grand Prix	Open - Site Assessment	RWQCB	Other	8000 Coliseum Way	.86
PG&E	Open - Site Assessment	ACEH	Open	5051 Coliseum Way	.96
Sf Oakland Auto Truck	Open - Eligible For Closure	RWQCB	Lust	8255 San Leandro Avenue	.78
Union Pacific Oakland Coliseum Site	Active	DTSC	State Response	700 73rd Avenue	.42
Volvo Gm Heavy Truck	Open - Verification Monitoring - Land Use Restrictions	RWQCB	Other	750 50th Avenue	.93
Western Colloid	RCRA	DTSC	Evaluation	700 71st Avenue	.39

2.5 Proximity to Sensitive Receptors

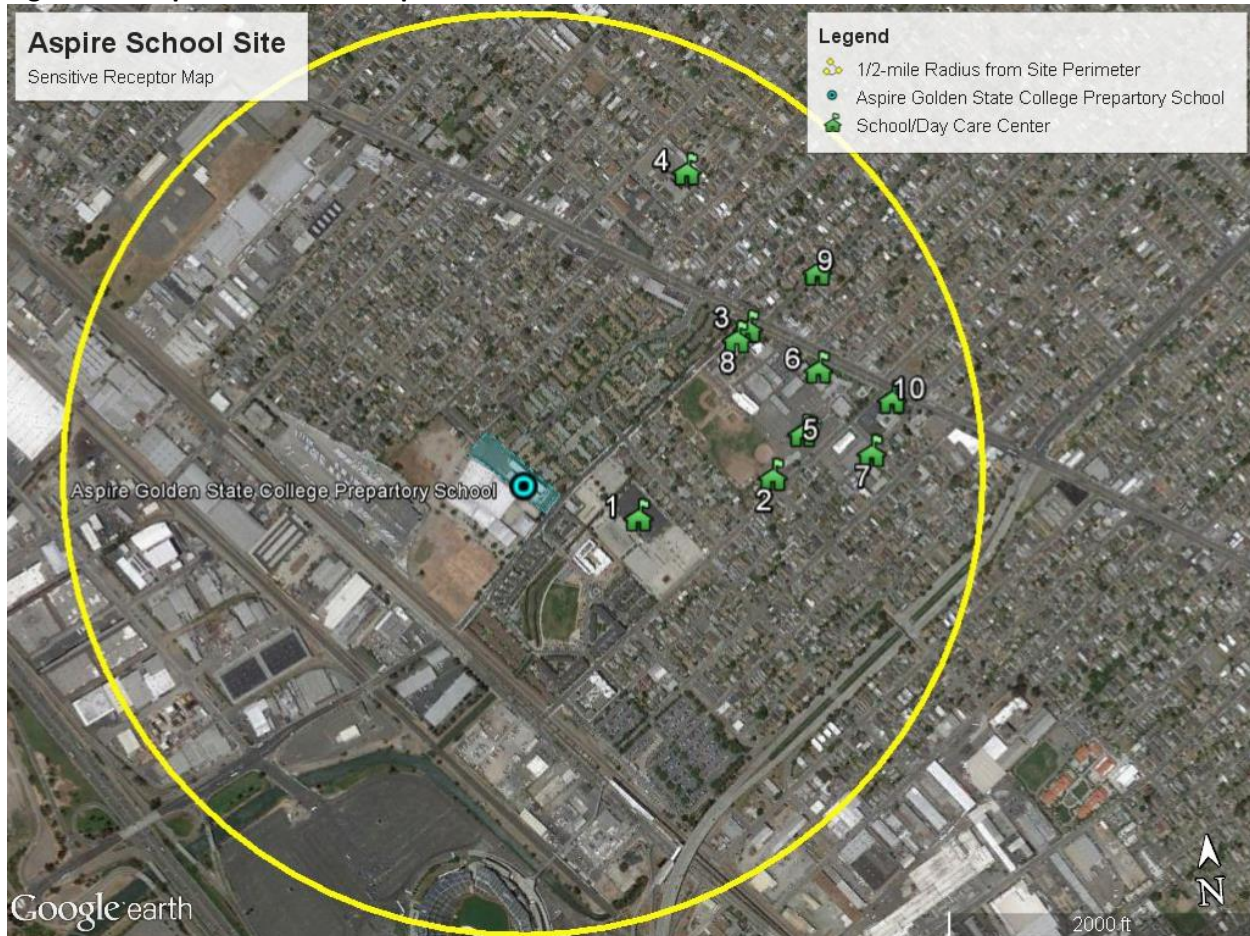
Sensitive receptors are defined as facilities where potentially fragile population groups such as children, the elderly and the acutely or chronically ill are likely to be located. Facilities would include schools, playgrounds, childcare centers, retirement homes, hospitals and medical clinics. Facilities located within one-half-mile of the site are shown in Table 2 and Figure 3 below.

Table 2 – Sensitive Receptors in Oakland

Site Name	Address	Receptor Type	Miles From Site Perimeter
1) Acts Christian Academy	1034 66 th Avenue Oakland, CA 94621 (510) 568-3333	Pre-K – 8 Private School	.11
2) Pio Pio Day Care	1089 69 th Avenue Oakland, CA 94621 (510) 568-0728	Day Care Center	.27
3) Coliseum College Prep Academy	1390 66 th Avenue Oakland, CA 94621 (510) 639-3201	6-12 Public School	.30
4) Roots International Academy	1390 66 th Avenue Oakland, CA 94621 (510) 639-3214	6-8 Public School	.30
5) Lockwood Early Childhood Center	1125 69 th Avenue Oakland, CA 94621 (510) 639-2884	Pre-K/Child Care Center	.31
6) Community United Elementary School	6701 International Boulevard Oakland, CA 94621 (510) 879-1340	K-5 Public School	.35
7) Rudsdale Continuation School	1180 70 th Avenue Oakland, CA 94621 (510) 879-4237	6-12 Alternative School	.39
8) Greenleaf Elementary School	6328 East 17 th Street Oakland, CA 94621 (510) 636-1400	K-8 Public School	.40

Site Name	Address	Receptor Type	Miles From Site Perimeter
9) Live Learn & Laugh Preschool	1446 Havenscourt Boulevard Oakland, CA 94621 (510) 569-9075	Preschool and Day Care Center	.42
10) Guice Christian Academy	6925 International Boulevard Oakland, CA 94621 (510) 729-0330	Pre-K – 5 Private School	.43

Figure 3 – Map of Sensitive Receptors



2.6 City of Oakland

Oakland is the largest city in the East Bay Area, the third largest city in the San Francisco Bay Area (Bay Area), the eighth largest city in the State of California and the 45th largest city in the United States. According to the 2010 United States Census and 2013 Population Estimate, Oakland’s population grew by 3.9 percent from 2010 to 2013.

Oakland is also the county seat of Alameda County and home to the Port of Oakland, which is the busiest port in the Bay Area and the fifth busiest container port in the United States.

Table 3 provides a summary of demographic data for Oakland derived from the US Census Department Population, Housing, Social and Economic Estimates for the 2008-2012 interval, supplemented with economic data from the California Employment Development Department (EDD).

Table 3 – Oakland Population Details¹

Category	Count	Percent
Total Population	392,890	100
Male	189,256	48.2
Female	203,634	51.8
Median Age	36.2	-
Household Size	2.49	-
White	153,243	39
African-American	107,130	27.3
Asian	65,583	16.7
Native American	2,492	.6
Some Other Race	42,033	10.7
Hispanic	99,882	25.4
Median Household Income	\$51,683	-
Median Home Value	\$449,800	-
Unemployment Rate (November 2014)	18,200	8.7
High School Graduate (25 and older)	68,363	17.4
Bachelor's Degree (25 and older)	85,257	21.7
Foreign Born Residents	108,109	27.5

Government

The City of Oakland is governed by an eight-member City Council, elected directly by the citizens of Oakland. The Council is made up of one representative from each of seven districts and one at-large representative. The Council sets goals and priorities for the City, approves the City budget, adopts ordinances to help the City serve its citizens, and appoints members to various boards and commissions. The City Council meets the first, third, and fifth Tuesdays of every month in Council Chambers, on the 3rd floor of City Hall, in Oakland.

The Aspire Golden State School campus is located within Oakland's 6th District and represented by City Council Member Desley Brooks. Council Member Brooks was first elected in 2002 and recently reelected in 2014. Her administration is focused on improving public safety, increasing economic development, improving the physical environment of District 6, and advocating on behalf of children and youth².

¹ American Community Survey. (2013). *ACS Demographic and Housing Estimates 2008-2012 American Community Survey 5-Year Estimates*. Retrieved from <http://factfinder.census.gov/faces/tableservices/jsf/pages/productview.xhtml?src=CF>
American Community Survey. (2010). *Households and Families: 2010 Census Summary File 1*. Retrieved from <http://factfinder.census.gov/faces/tableservices/jsf/pages/productview.xhtml?src=bkmk>
California Employment Development Department. (2014, November). *Monthly Labor Force Data for Cities and Census Designated Places November 2014 - Preliminary*. Retrieved from <http://www.labormarketinfo.edd.ca.gov/Content.asp?pageid=1006>

² City of Oakland. (2014). *Councilmember District 6*. Retrieved from <http://www2.oaklandnet.com/Government/o/CityCouncil/o/District6/index.htm>

2.7 Aspire Public Schools and Aspire Golden State College Preparatory Academy

Aspire Public Schools

Aspire Public Schools operates 38 schools in California and Tennessee serving over 14,600 students from kindergarten through 12th grade. Aspire Public Schools' mission is to open and operate small, high-quality, college preparatory charter schools in low-income neighborhoods in order to increase academic performance of underserved students, develop effective educators, share successful practices with other forward-thinking educators and catalyze change in public schools. There are seven campuses in Oakland.

Aspire Golden State College Preparatory Academy

The on-site Aspire Golden State School serves students from 6th through 12th grade. The school has 480 students with the following demographic makeup: 75 percent Hispanic, 23 percent African-American, one percent Pacific Islander and one percent Asian-American. Free and reduced lunches are provided to 83 percent of students.

Students must enter a lottery in order to attend the school and the lottery is structured by four priority groups. The groups, listed in order of priority, are students coming from other Aspire Public Schools campuses, siblings of existing students, students that live in Oakland and all other students. All grades currently have waitlists that remain active all school year, with the largest waitlist amounting to 30 students for 9th grade.

Family meetings are held on the first Wednesday of every month and are run by the Aspire Golden State School's director of student and family life and the principal. These meetings involve the announcement and discussion of school events, changes and schedules; curriculum and educational programs; volunteer opportunities; and family questions or concerns.

Table 4 - Aspire Golden State College Preparatory Academy Schedule*

School Hours - Monday and Tuesday	
6 th - 9 th grade students	8 a.m. - 3:45 p.m.
10 th - 12 th grade students	8 a.m. - 2:55 p.m.
School Hours - Wednesday and Thursday	
6 th - 9 th grade students	8 a.m. - 2:55 p.m.
10 th - 12 th grade students	8 a.m. - 3:45 p.m.
School Hours - Friday	
All students	8 - 11:55 a.m.
Lunch Times - Monday through Thursday	
6 th - 7 th grade students	11:05 - 11:40 a.m.
8 th - 9 th grade students	12:40 - 1:20 p.m.
10 th - 12 th grade students	12:05 - 12:35 p.m.

*Multiple on-campus after-school programs are offered daily until 6 p.m.

For a complete schedule for the 2014/2015 school year, please visit Aspire Golden State School's website at: <http://aspirepublicschools.org/schools/regions/california-schools/aspire-golden-state-college-preparatory-academy>.

2.8 Local Organizations

The following organizations serve Oakland and the community surrounding the site.

East Oakland Community Project

East Oakland Community Project is a multi-service organization offering emergency and transitional housing in Alameda County. The organization's Crossroads Facility provides accommodation and holistic services to homeless people, including individuals battling HIV/AIDS, and is located just less than one mile from the former PEM site. Over 16,000 of Alameda County's homeless have utilized the facility. Three additional transitional housing programs are offered in East Oakland including a safe home and support services for homeless young adults; a 14-unit congregate living complex that gives single parent families a stable home environment with extensive resources for regaining their foothold; and ten residential units for homeless families scattered throughout Oakland.

City of Oakland Affordable Housing

Since 1988, the City of Oakland has funded the development of over 6,000 units of affordable housing. The City has many funding programs that work with non-profit developers to increase the number of units and preserve affordable housing in Oakland including an Affordable Housing New Construction and Substantial Rehabilitation Loan Program; Preservation and Rehabilitation of Existing Affordable Housing Loan Program; and a Predevelopment Loan Program. These funds are available from the federal government's HOME program and other local funding sources.

East Oakland Youth Uprising

East Oakland Youth Uprising strives to transform East Oakland into a healthy and economically robust community by developing the leadership of youth and young adults and improving the systems that impact them. Located in the middle of East Oakland, the organization is a neighborhood hub offering young people services and programs to increase the physical and mental wellbeing, community connection, educational attainment and career achievement among youth members.

2.9 Local Media

The Oakland Tribune is a local daily newspaper owned by the MediaNews Group. The paper provides full coverage of newsworthy events in the Oakland and Alameda County area and offers print and online versions. A search of the archives of the Oakland Tribune shows there has been no media coverage regarding environmental activities for the site.

2.10 Nearby Residential Population

The site is located in East Oakland in close proximity to multiple affordable housing developments, Station 29 of the Oakland Fire Department, a church, and a variety of commercial and industrial businesses. The closest housing development is located directly adjacent to the site at the corner of 66th Avenue and Fenham Street.

3.0 LOCAL AWARENESS AND INTEREST

3.1 History of Community Involvement

Aspire Public Schools is committed to keeping the community informed of site activities. In 2009, public participation activities began in support of environmental investigation and cleanup actions for the site. The public outreach program for this site includes the following:

- 2009 - Mailing list prepared
- 2009 - Information repository established
- March 2009 - Fact sheet summarizing proposed environmental remediation activities and opportunity for public review and comment distributed via US Mail
- November 2014 - Key contact list prepared
- November/December 2014 - Fact sheet summarizing upcoming environmental site activities/construction of new gymnasium/lunch room distributed to Aspire Golden State School community and Oakland officials
- November/December 2014 - Interviews conducted with Aspire Golden State School community and Oakland officials to discuss project and receive input for this plan
- December 2014 - Public Participation Plan finalized

Appendix A contains copies of the outreach materials prepared in support of these tasks.

3.2 Community Meetings/Interviews

In November/December 2014, project team members met with Oakland officials and members of the Aspire Golden State School community to gather information for this plan. Appendix D lists the interview questions and participants. Information gathered from the interviews form the basis of the summary of community concerns and interest presented in the next section.

3.3 Interview Responses

Interview participants stated they have a low to moderate level of interest in environmental site activities. Parents and school staff did not express concern or have questions about investigation and remediation work; however, parents are very supportive of the new gymnasium/lunch room being built and are most interested in being kept informed of planning progress and opportunities to help with construction. City officials wanted assurance that site environmental conditions pose no imminent threat to students, staff or parents and requested to be kept informed of project activities at key milestones.

All project communications should be in simple, matter-of-fact language with graphics to facilitate understanding and translated into Spanish. All Aspire Golden State School parent/guardian/staff questions or concerns will be presented to the principal and a bilingual community outreach

representative assigned to this project will be available to answer questions and provide project information.

4.0 PUBLIC PARTICIPATION ACTIVITIES

The following activities are recommended to provide members of the public with site information and appropriate opportunities for public comment. A schedule for these activities is provided in Table 5.

4.1 Purpose and Objectives of Plan

The Public Participation Plan objectives to address community concerns about the site are to:

- Ensure the Aspire Golden State School community, neighboring community and Oakland officials are provided with timely and accurate information relating to environmental remediation activities;
- Provide the Aspire Golden State School community, neighboring community and Oakland officials with an opportunity to ask questions about planned activities;
- Encourage representatives from the Aspire Golden State School community, neighboring community and Oakland officials to share their concerns and identify interests and issues associated with site remediation activities; and
- Identify the most effective methods to address interests and concerns throughout the duration of the project.

4.2 Public Participation Activities

The activities described below have been designed to meet the objectives stated above.

4.3 ACEH and US EPA Contacts

Contacts have been established for the public to direct questions and concerns about the project.

Jerry Wickham
ACEH Senior Hazardous Materials Specialist
1131 Harbor Bay Parkway
Alameda, CA 94502
Jerry.Wickham@acgov.org
(510) 567-6791

Carmen Santos
US EPA PCB Spill Cleanup Officer
75 Hawthorne Street
San Francisco, CA 94105
Santos.Carmen@epa.gov
(415) 972-3360

4.4 Mailing List and Email Distribution List

A targeted key contact list has been prepared for this project that includes potential stakeholders to be notified, as necessary and appropriate, given project activities. The list includes: area businesses and residents directly surrounding the site; key City, County, State and Federal representatives; and representatives of social and community organizations. The list will be updated as needed to ensure accuracy and to add the addresses of individuals who request to be on the list. Appendix C contains a copy of the key contact list.

4.5 Information Repository

To facilitate community access to key technical documents, an information repository has been established at ACEH:

1131 Harbor Bay Parkway
Alameda, CA 94502
(510) 567-6791 – To arrange access.

This repository includes access to key technical documents, the PPP, fact sheets, work notices and other new technical documents as they are developed and approved.

ACEH and RWQCB Websites: Key technical reports and other site-related information are available online:

<http://www.acgov.org/aceh/lop/ust.htm>

http://geotracker.waterboards.ca.gov/profile_report.asp?global_id=T0600101950

An informal information repository will be established at Aspire Golden State School's main office, which will include workplans, fact sheets and work notices on upcoming work.

4.6 Prepare and Distribute Project Updates

Project updates will be prepared, as needed, to provide the Aspire Golden State School community, neighboring community and Oakland officials with information about environmental activities at the site. Updates will be provided in easily understandable language and will contain graphics to enhance understanding. All updates will be translated into Spanish.

4.7 Prepare and Distribute Work Notices

Work notices will be provided to the Aspire Golden State School community, neighboring community and Oakland officials at least one week prior to the start of work. Work notices will include the following information: work that will be done; impacts, if any, to on-site students and staff, area businesses and residents; work schedule; and contact information for individuals to call with questions or concerns. Work notices will be provided in easily understandable language and will contain graphics to enhance understanding. All work notices will be translated into Spanish.

4.8 Community Project Briefings

Informal community briefings will be held with Aspire Golden State School parents, guardians, and staff, Oakland officials, management of nearby affordable housing developments and other schools within a quarter-mile of the site prior to work taking place. All briefings for Aspire Golden State School parents, guardians and staff will take place during regular on-campus family and staff meetings, in coordination with the principal. Family meetings are held on the first Wednesday of every month at 5:30 p.m. and staff meetings are held on Fridays at 12:30 p.m. The purpose of these briefings is to ensure the community has a clear understanding of project issues, that the needs of the community are being identified and met, and to provide project updates. Additional briefings will be held throughout the duration of the project, if determined necessary.

4.9 Additional Activities

Other outreach activities may be conducted in addition to those described above. Activities may include mailing of supplemental fact sheets, letters, flyers or postcards to the project key contact list or conducting door-to-door outreach to ensure the community is kept informed about the project. Other outreach activities may also be implemented, as suggested by community members, to maximize participation.

4.10 Schedule of Public Participation

Table 5 presents a tentative schedule for the implementation of public participation activities:

Table 5 –Schedule of Project Activities and Public Participation

Public Participation Activity	Schedule
Develop and Update Project Contact Lists	2009/Ongoing
Conduct Public Participation Interviews	November/December 2014
Prepare Public Participation Plan	November/December 2014
Issue Fact Sheet on Environmental Activities	November/December 2014
Conduct Community Briefings	November/December 2014; Ongoing
Issue Project Updates	Ongoing
Begin Work	December 2014

APPENDIX A – PREVIOUS OUTREACH MATERIALS

FACT SHEET - NOVEMBER 2014



Fact Sheet

Upcoming Environmental Work

Aspire Golden State College Preparatory Academy
1009 66th Avenue, Oakland

Background

Aspire Public Schools builds small, high-quality schools in underserved, inter-city areas. The Aspire Golden State College Preparatory Academy (Aspire School) was built on a piece of property that used to be owned by a company that built and repaired motors from the late 1940s to early 2000s. This work left chemicals in the soil and groundwater beneath the property including volatile organic compounds, petroleum byproducts and polychlorinated biphenyls.

Before Aspire School was built, the site was investigated and cleaned up to make it a suitable and safe property for a school. This included the removal of an underground gasoline storage tank, contaminated soil and groundwater, and the installation of asphalt, concrete and landscaped areas to prevent human contact with any contamination that remained in soil. Investigation and cleanup work was overseen by the Alameda County Department of Environmental Health (Alameda County) and the US Environmental Protection Agency (US EPA).



Over the next few months, we will be conducting some environmental work at Aspire School.

Upcoming Work

Alameda County and the US EPA have asked us to conduct additional work to address remaining environmental issues at the property. As part of this request, we will be conducting the following field work on a weekend in December 2014.

- We will collect soil samples from beneath the asphalt where the gymnasium/lunch room will be built. This will help us determine the best way to construct the building in a way that fully protects the health of our students, teachers, staff and neighbors.
- We will be collecting samples of soil gas and air in the crawl space in the vicinity of and underneath Building 200 to confirm that low levels of chemicals in groundwater and soil are not impacting indoor air quality.

For More Information

We will continue to provide you with information on this project and share the results of field work. If you have questions, please contact Tracy Craig at 510-334-4866 or Tracy@Craig-Communications.com.



Hoja de Información

Próximo trabajo ambiental

Aspire Golden State College Preparatory Academy
1009 66th Avenue, Oakland

Antecedentes

Aspire Public Schools construye pequeñas escuelas de alta calidad en áreas urbanas que no reciben buena atención. Aspire Golden State College Preparatory Academy (Aspire School) fue construida en una fracción dentro de la propiedad de una empresa de construcción y reparación de motores entre los últimos años de 1940 y principios de los 2000. Los trabajos de esta empresa dejaron sustancias en la tierra y en las aguas subterráneas debajo de la propiedad, incluyendo compuestos orgánicos volátiles, derivados del petróleo y bifenilos policlorados.

Antes de que Aspire School fuera construida, el sitio fue investigado y limpiado para que fuera una propiedad adecuada y segura para una escuela. Esto incluyó la eliminación de un tanque subterráneo de almacenamiento de gasolina, tierra y aguas subterráneas contaminadas, y la instalación de asfalto, hormigón y zonas jardineadas para evitar el contacto humano con cualquier tipo de contaminación que quedara en la tierra. La investigación y el trabajo de limpieza fueron supervisados por el Departamento de salud ambiental del Condado de Alameda (Condado de Alameda) y la Agencia de protección ambiental de los Estados Unidos (US EPA).



En los próximos meses, estaremos llevando a cabo trabajo ambiental en Aspire School.

Trabajos próximos

El Condado de Alameda y la US EPA nos han pedido hacer más estudios para afrontar las inconveniencias ambientales sobrantes en la propiedad. Como parte de este interés, estaremos llevando a cabo el siguiente trabajo en esta propiedad durante un fin de semana en diciembre de 2014.

- Coleccionaremos muestras de la tierra debajo del pavimento donde se construirá el gimnasio/cafetería. Esto nos ayudará a determinar la mejor manera de construir el edificio para proteger totalmente la salud de nuestros estudiantes, profesores, personal y vecinos.
- Estaremos coleccionando muestras de gas en la tierra y el aire debajo y en las cercanías del Edificio 200 para confirmar que los niveles bajos de sustancias químicas en las aguas subterráneas y en la tierra no están afectando la calidad del aire en el interior.

Para más información

Vamos a continuar dando información acerca de este proyecto y a compartir los resultados de este trabajo. Si usted tiene alguna pregunta, por favor comuníquese con Tracy Craig al, 510-334-4866 o Tracy@Craig-Communications.com o con Rossana Peniche al, 925-759-0356 o Rossana@craig-communications.com.

FACT SHEET - MARCH 2009

ALAMEDA COUNTY
HEALTH CARE SERVICES
AGENCY
DAVID J. KEARS, Agency Director



**FACT SHEET ON ENVIRONMENTAL ASSESSMENT
PACIFIC ELECTRIC MOTORS
(PROPOSED ASPIRE PUBLIC SCHOOL)**
1009 66TH Avenue, Oakland, CA 94621
Fuel Leak Case No. RO0000411 and
GeoTracker Global ID T0600101950

ENVIRONMENTAL HEALTH SERVICES
ENVIRONMENTAL PROTECTION
1131 Harbor Bay Parkway, Suite 250
Alameda, CA 94502-6577
(510) 567-6700
FAX (510) 337-9335

Site Remediation Summary

This fact sheet has been prepared to inform community members and other interested stakeholders regarding the status of a proposed soil and groundwater cleanup at Pacific Electric Motors located 1009 66th Avenue, Oakland, California. Mr. Robitaille with Aspire Public Schools, the lead responsible party for the case and their environmental consultant LFR are proposing in-situ soil vapor extraction with air sparging (SVE/AS) and soil excavation as remediation technologies to cleanup the site.

Site Background

The 2.51-acre Site is located on the western side of 66th Avenue between East 14th Street to the north and San Leandro Street to the south, and is currently developed with two buildings referred to as the "Manufacturing/Office Building" and the "Warehouse." Previous site use for manufacturing and warehouse storage has resulted in the presence of chemicals (petroleum hydrocarbons, arsenic, PCBs, and SVOCs) in soil and groundwater beneath the Site. Aspire plans to develop a new charter high school on the Site. Land use surrounding the site is residential to the north and northeast with commercial/industrial to the south and southwest, with Interstate 880 located 0.6 miles west of the site.

Remediation Alternative: Soil Vapor Extraction with Air Sparging

Soil Vapor extraction with air sparging (SVE/AS) is proposed to remediate the soil and groundwater contamination at the site. SVE is an in-situ remediation technology in which a vacuum is applied to the soil matrix to create a negative pressure gradient that causes movement of volatile constituents adsorbed to soils (i.e. vapors) toward extraction wells. Air sparging is an in-situ remediation technology that injects clean air into the subsurface to volatilize or strip contaminants dissolved in groundwater and adsorbed to soils. This technology involves injection of clean air into the subsurface saturated zone, enabling a phase transfer of contaminants from a dissolved state to a vapor phase. The SVE system would then capture the vapor phase contaminant "stripped" from the groundwater, thus reducing contaminant concentrations in groundwater and soil.

For Additional information, please contact:

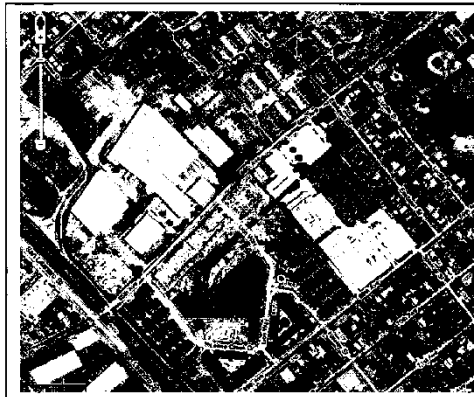
Paresh Khatri Alameda County Environmental Health 1131 Harbor Bay Parkway, Ste 250 Alameda, CA 94502 Phone: 510-777-2478 E-mail: Paresh.Khatri@acgov.org	Ron Goloubow LFR, Inc. 1900 Powell Street, 12 th Floor Emeryville, CA 94608 Phone: 510-652-4500 E-mail: Ron.Goloubow@lfr.com
---	--

Soil Excavation and Disposal

Soil excavation is proposed to remediate the shallow soil contamination identified at the site from the surface to two feet below the ground surface, using conventional earth moving equipment. Clean backfill material would be imported as necessary to restore the desired final site grade. This method is effective because it would remove contaminated soil, which would be confirmed by soil sampling and analysis.

Next Step

Mr. Robitaille is working with Alameda County Environmental Health (ACEH) to implement a soil and groundwater cleanup at the site. The proposed alternative is described in a report prepared by LFR, Inc. on behalf of Mr. Robitaille: "Corrective Action Plan," dated February 20, 2009. The public is invited to review and comment on the cleanup action proposed in the Report. The report is available on ACEH's website (<http://www.acgov.org/aceh/lop/ust.htm>) or the State Water Resources Control Board's GeoTracker website (<http://www.geotracker.waterboards.ca.gov/>). The report and case file are also available for review at the ACEH located at 1131 Harbor Bay Parkway in Alameda, California. Please send a fax to 510-337-9335 to request a date and time to review the case file. Please send written comments regarding the corrective action to Paresh Khatri at the address below. All written comments received by April 15, 2009 will be forwarded to the Responsible Party and will be considered and responded to prior to a final determination on the proposed cleanup.



APPENDIX B - PUBLIC PARTICIPATION INTERVIEW PARTICIPANTS/QUESTIONS

PUBLIC PARTICIPATION INTERVIEW PARTICIPANTS:

City of Oakland

- Shelly Garza, Assistant to District 6 City Councilmember, Desley Brooks

Aspire Golden State College Preparatory School

- Thomas Kadelbach, Principal
- Approximately 20 parents of Aspire Golden State School students (group interview during on-campus family meeting)

PUBLIC PARTICIPATION INTERVIEW QUESTIONS:

- 1.) How much do you know about past industrial activities and contamination on Aspire Golden State School's property?
- 2.) What are your concerns, if any?
- 3.) What is the best way to inform the community about environmental work on the property and how much information should be provided?
- 4.) Is there anyone else you think we should speak with?

Former Pacific Electric Motors Site
Public Participation Plan
December 2014

APPENDIX C - KEY CONTACT LIST

FORMER PACIFIC ELECTRIC MOTORS SITE - KEY PROJECT STAKEHOLDERS										
COMPANY/OFFICE	LAST NAME	FIRST NAME	TITLE	ADDRESS	CITY	STATE	ZIP	PHONE	EMAIL	
ASPIRE PUBLIC SCHOOLS										
Aspire Public Schools, Home Office	Simon	Tim	Facilities Manager	1001 22nd Avenue	Oakland	CA	94606	831-710-1865	Tim.Simon@aspirepublicschools.org	
Aspire Public Schools, Home Office	Batra	Mala	Director of Growth and Strategy	1001 22nd Avenue	Oakland	CA	94606	510-434-5000	mala.batra@aspirepublicschools.org	
Aspire Public Schools, Home Office	Kean	Kimi	Area Superintendent, Bay Area	1001 22nd Avenue	Oakland	CA	94606	510-635-3847 ext. 11442	kimi.kean@aspirepublicschools.org	
Aspire Golden Gate State College Preparatory Academy	Kadelbach	Thomas	Principal	1009 66th Avenue	Oakland	CA	94612	510-567-9631	thomas.kadelbach@aspirepublicschools.org	
Aspire Golden Gate State College Preparatory Academy	Valencia	Natalie	Office Manager	1009 66th Avenue	Oakland	CA	94612	510-567-9631	natalie.sotovalencia@aspirepublicschools.org	
Aspire Golden Gate State College Preparatory Academy	Boult	Anthony	Building Manager	1009 66th Avenue	Oakland	CA	94612	916-912-6652	anthony.boult@aspirepublicschools.org	
PACIFIC ELECTRIC MOTOR COMPANY										
Pacific Electric Motor Company	Boyd	Stephen		137 Fiesta Circle	Orinda	CA	94563			
MODAD PROPERTIES, LLC										
Modad Properties, LLC	Anderson	Richard		561 Fourth Street	Oakland	CA	94607			
ARCADIS										
Arcadis	Kalve	Erica	Senior Geologist	100 Smith Ranch Road, Suite 329	San Rafael	CA	94903	510-206-4514	erica.kalve@arcadis-us.com	
Arcadis	Tan	Angeline	Environmental Engineer	2999 Oak Road, Suite 300	Walnut Creek	CA	94597	925-286-6087	angeline.tan@arcadis-us.com	
CRAIG COMMUNICATIONS										
Craig Communications	Craig	Tracy	Stakeholder Engagement Consultant	647 Tennent Avenue, Suite 102	Pinole	CA	94564	510-334-3866	tracy@craig-communications.com	
Craig Communications	Peniche	Rossana	Stakeholder Engagement Consultant	647 Tennent Avenue, Suite 102	Pinole	CA	94564	925-759-0356	rossana@craig-communications.com	
Craig Communications	Kendell	Lauren	Stakeholder Engagement Consultant	647 Tennent Avenue, Suite 102	Pinole	CA	94564	925-348-4593	lauren@craig-communications.com	
REGULATORY AGENCIES										
Alameda County Environmental Health Department, Local Oversight Program	Roe	Dilan	Supervisor	1131 Harbor Bay Parkway	Alameda	CA	94502	510-567-6767	dilan.roe@acgov.org	
Alameda County Environmental Health Department, Local Oversight Program	Wickham	Jerry	Senior Hazardous Materials Specialist	1131 Harbor Bay Parkway	Alameda	CA	94502	510-567-6791	jerry.wickham@acgov.org	
San Francisco Bay Regional Water Quality Control Board	McCaulou	Cherie	Caseworker	1515 Clay Street, Suite 1400	Oakland	CA	94612	510-622-2342	cmccaulou@waterboards.ca.gov	
San Francisco Bay Regional Water Quality Control Board	Prowell	Cheryl	Supervisor	1515 Clay Street, Suite 1400	Oakland	CA	94612	510-622-2408	cprowell@waterboards.ca.gov	
US Environmental Protection Agency, Region 9 (LND-4-1)	Santos	Carmen	PCB Spill Cleanup Officer	75 Hawthorne Street	San Francisco	CA	94105	415-972-3360	santos.carmen@epa.gov	
FEDERAL AND STATE ELECTED OFFICIALS										
California State Senate, 9th District	Hancock	Lori	Senator	1515 Clay Street, Suite 2202	Oakland	CA	94612	510-286-1333		
California State Assembly, 18th District	Bonta	Rob	Assemblymember	1515 Clay Street, Suite 2204	Oakland	CA	94612	510-286-1670		
U.S. Congress, California's 13th District	Lee	Barbara	Congresswoman	1301 Clay Street, Suite 100-N	Oakland	CA	94612	510-7630370		
CITY OF OAKLAND										
City of Oakland	Schaaf	Libby	Mayor	1 Frank Ogawa Plaza, 3rd Floor	Oakland	CA	94612	510-238-3141	lschaaf@oaklandnet.com	
City of Oakland	Swanson	Sandre' R.	Deputy Mayor	1 Frank Ogawa Plaza, 3rd Floor	Oakland	CA	94612	510-238-7413	sswanson@oaklandnet.com	
City of Oakland	Agullar-Sanchez	Hatzune	Community Services Manager	1 Frank Ogawa Plaza, 3rd Floor	Oakland	CA	94612	510-238-7072	haguilar@oaklandnet.com	
City of Oakland	Kalb	Dan	Councilmember, District 1	1 Frank Ogawa Plaza, 2nd Floor	Oakland	CA	94612	510-238-7001	dkalb@oaklandnet.com	
City of Oakland	Guillen	Abel	Councilmember, District 2	1 Frank Ogawa Plaza, 2nd Floor	Oakland	CA	94612	510-238-6910	aguillen@oaklandnet.com	
City of Oakland	Gibson McElhane	Lynette	Councilmember, District 3	1 Frank Ogawa Plaza, 2nd Floor	Oakland	CA	94612	510-238-3612	lmcelhane@oaklandnet.com	
City of Oakland	Campbell Washington	Anne	Councilmember, District 4	1 Frank Ogawa Plaza, 2nd Floor	Oakland	CA	94612	510-238-7004		
City of Oakland	Gallo	Noel	Councilmember, District 5	1 Frank Ogawa Plaza, 2nd Floor	Oakland	CA	94612	510-238-3612	ngallo@oaklandnet.com	
City of Oakland	Brooks	Desley	Councilmember, District 6	1 Frank Ogawa Plaza, 2nd Floor	Oakland	CA	94612	510-238-7006	dbrooks@oaklandnet.com	
City of Oakland	Garza	Shelly	Assistant to Desley Brooks	1 Frank Ogawa Plaza, 2nd Floor	Oakland	CA	94612	510-238-3971	sgarza@oaklandnet.com	
City of Oakland	Reid	Larry	Councilmember, District 7	1 Frank Ogawa Plaza, 2nd Floor	Oakland	CA	94612	510-238-7007	lreid@oaklandnet.com	
City of Oakland	Kaplan	Rebecca	Councilmember At Large	1 Frank Ogawa Plaza, 2nd Floor	Oakland	CA	94612	510-238-7008	atlarge@oaklandnet.com	
City of Oakland	Gardner	Henry	Interim City Administrator	1 Frank Ogawa Plaza, 3rd Floor	Oakland	CA	94612	510-238-3301	cityadministrator@oaklandnet.com	
City of Oakland	Neary	Mike	Assistant Director of Public Works, Engineering and Construction	250 Frank Ogawa Plaza, Suite 4314	Oakland	CA	94612	510-238-3961	mjneary@oaklandnet.com	
City of Oakland	Levin	Brook	Assistant Director of Public Works, Facilities and Environmental	250 Frank Ogawa Plaza, Suite 4314	Oakland	CA	94612	510-238-3961	blevin@oaklandnet.com	
City of Oakland	Ferguson	David	Assistant Director of Public Works, Infrastructure and Operations	250 Frank Ogawa Plaza, Suite 4314	Oakland	CA	94612	510-238-3961	dferguson@oaklandnet.com	
City of Oakland	Troyan	Vitaly	Director of Public Works and Civil Engineer	250 Frank Ogawa Plaza, Suite 4314	Oakland	CA	94612	510-238-3961	vtroyan@oaklandnet.com	
City of Oakland	Villalobos	Tony	Lieutenant, Fire Station 29, Fire Department	1061 66th Avenue	Oakland	CA	94612	510-238-4029	avillalobos@oaklandnet.com	
City of Oakland	Williams	James	Deputy Chief, Fire Department	150 Frank Ogawa Plaza, Suite 3354	Oakland	CA	94612	510-238-4050	jwilliams@oaklandnet.com	
City of Oakland	Matthews	Keith	Hazardous Materials Inspector II, Fire Department	150 Frank Ogawa Plaza, Suite 3354	Oakland	CA	94612	510-238-3997	kmatthews@oaklandnet.com	
City of Oakland	Hoffmann	Mark	Deputy Chief of Emergency Service/Suppression, Fire Department	150 Frank Ogawa Plaza, Suite 3354	Oakland	CA	94612	510-238-4050	mhoffmann@oaklandnet.com	
City of Oakland	Basada	P.	Fire Protection Engineer, Fire Department	150 Frank Ogawa Plaza, Suite 3354	Oakland	CA	94612	510-238-3851	pbasada@oaklandnet.com	

Former Pacific Electric Motors Site
Public Participation Plan
December 2014

City of Oakland	DeLoach Reed	Teresa	Fire Chief, Fire Department	47 Clay Street	Oakland	CA	94612	510-238-4050	
City of Oakland	Griffin	Leroy	Assistant Fire Marshall, Fire Department	47 Clay Street	Oakland	CA	94612	510-238-7759	lgriffin@oaklandnet.com
City of Oakland	Byrd	Michele	Deputy Director, Housing and Community Development	250 Frank Ogawa Plaza, Suite 5313	Oakland	CA	94612	510-238-3714	mbyrd@oaklandnet.com
City of Oakland	Brown	Lisa	Manager of Community Development Block Grant, Housing and Community Development Department	250 Frank Ogawa Plaza, Suite 5313	Oakland	CA	94612	510-238-3716	ldbrown@oakland.net
City of Oakland	Thompson	Norma	Manager of Housing Development Section and Homeownership Programs, Housing and Community Development Department	250 Frank Ogawa Plaza, Suite 5313	Oakland	CA	94612	510-238-7137	nthompson@oaklandnet.com
City of Oakland	Taylor	Connie	Manager of Rent Adjustment Section, Housing and Community Development Department	250 Frank Ogawa Plaza, Suite 5313	Oakland	CA	94612	510-238-3721	craylor@oaklandnet.com
City of Oakland	Ware	Loyd	Manager of Residential Lending and Rehabilitation Services Section, Housing and Community Development Department	250 Frank Ogawa Plaza, Suite 5313	Oakland	CA	94612	510-238-3909	lware@oaklandnet.com
City of Oakland	Kattchee	Susan	Environmental Services Manager, Public Works	250 Frank Ogawa Plaza, Suite 4314	Oakland	CA	94612	510-238-6382	skattchee@oaklandnet.com
City of Oakland	Nair	Gopal	Environmental Services Manager, Public Works	250 Frank Ogawa Plaza, Suite 4314	Oakland	CA	94612	510-238-6361	gnair@oaklandnet.com
City of Oakland	Gomez	Mark	Environmental Program Supervisor, Environmental Services - Environmental Remediation, Public Works	250 Frank Ogawa Plaza, Suite 4314	Oakland	CA	94612	510-238-7314	mmgomez@oaklandnet.com
City of Oakland	Sibley	Carl	Senior Construction Inspector	250 Frank Ogawa Plaza, Suite 4344	Oakland	CA	94612	510-238-7262	csibley@oaklandnet.com
City of Oakland	Chibueze	Austin	Public Insepctor	250 Frank Ogawa Plaza, Suite 4344	Oakland	CA	94612	510-867-5506	achibueze@oaklandnet.com
City of Oakland	Bacina	Chris	Oakland Planning and Building Department	250 Frank Ogawa Plaza	Oakland	CA	94612	510-238-3759	cbacina@oaklandnet.com
City of Oakland Police Department	Whent	Sean	Interim Chief of Police	455 7th Street	Oakland	CA	94612	510-238-3365	ocop@oaklandnet.com
Oakland Permitting Agency	Yoo	James	Water Resources Section and Inspector	250 Frank Ogawa Plaza	Oakland	CA	94612	510-670-6633	wells@acpwa.gov
City of Oakland	Shelton	Elia	Reference Librarian	125 14th Street	Oakland	CA	94612	510-238-3138	eshelton@oaklandlibrary.org
COUNTY OF ALAMEDA									
Alameda County Board of Supervisors	Haggerty	Scott	District 1 Supervisor	1221 Oak Street, Suite 536	Oakland	CA	94612	510-272-6691	district1@acgov.org
Alameda County Board of Supervisors	Valle	Richard	District 2 Supervisor	1221 Oak Street, Suite 536	Oakland	CA	94612	510-272-6692	district2@acgov.org
Alameda County Board of Supervisors	Chan	Wilma	District 3 Supervisor	1221 Oak Street, Suite 536	Oakland	CA	94612	510-272-6693	district3@acgov.org
Alameda County Board of Supervisors	Miley	Nathan	District 4 Supervisor/Vice President	1221 Oak Street, Suite 536	Oakland	CA	94612	510-272-6694	district4@acgov.org
Alameda County Board of Supervisors	Carson	Keith	District 5 Supervisor	1221 Oak Street, Suite 536	Oakland	CA	94612	510-272-6695	district5@acgov.org
County of Alameda	Hishida Graff	Crystal	Clerk of the Board	1221 Oak Street, Room 536	Oakland	CA	94612	510-208-4949	
County of Alameda	Muranishi	Susan	County Administrator	1221 Oak Street, Room 555	Oakland	CA	94612	510-272-3862	susan.muranish@acgov.org
County of Alameda	Woldesenbet	Daniel	Public Works Agency Director and County Engineer	399 Elmhurst Street	Hayward	CA	94544	510-670-5455	
County of Alameda	Levi	Ariu	Environmental Health Director	1131 Harbor Bay Parkway	Alameda	CA	94502	510-567-6777	ariu.levi@acgov.org
County of Alameda	Miller	Steve	Engineering Staff Assistant	1000 Broadway Suite 500	Oakland	CA	94607	510-670-5100	
County of Alameda	Briscoe	Alex	Director, Health Care Services Agency	1131 Harbor Bay Parkway	Alameda	CA	94502		
NON-GOVERNMENTAL ORGANIZATIONS									
East Oakland Community Project	Jackson	Wendy	Executive Director	7515 International Boulevard	Oakland	CA	94612	510-532-3211	info@eocp.net
East Oakland Youth Uprising	Simmons	Olis	President and CEO	8711 MacArthur Boulevard	Oakland	CA	94612	510-777-9909	
League of Women Voters of Oakland	Gavzy	Katherine	President	1305 Franklin Street, Suite 311	Oakland	CA	94612	510-834-7640	
Oakland African American Chamber of Commerce	Hardee	Wil	President and CEO	449 15th Street, Suite 410	Oakland	CA	94612	510-268-1600	
Oakland Metropolitan Chamber of Commerce	Haraburda	Joe	President and CEO	475 14th Street	Oakland	CA	94612	510-874-4800	jharaburda@oaklandchamber.com
Acts Full Gospel Church of God in Christ	Jackson	Bob	Senior Pastor	1034 66th Avenue	Oakland	CA	94612	510-567-1300	bishop@actsfullgospel.org
Coliseum College Preparatory Academy	Carozza	Amy	Principal	1390 66th Avenue	Oakland	CA	94612	510-639-3201	
Roots International Academy	Ceja	Patricia	Principal	1390 66th Avenue	Oakland	CA	94612	510-639-3226	patricia.ceja@ousd.k12.ca.us
Lion Creek Crossings Head Start				6818 Lion Way, Suite 110	Oakland	CA	94612	510-615-5587	
Lion Creek Crossings Family Resource Center				6818 Lion Way, Suite 105	Oakland	CA	94612	510-636-9975	
PRIVATE BUSINESS/MISC.									
Fruitvale Business Center				901-1001 66th Avenue	Oakland	CA	94612		
Fruitvale Canning Company				P.O. Box 2102	Orinda	CA	94563		
KavPed Incorporated				P.O. Box 2102	Orinda	CA	94563		
Kavped Incorporated & SP Transportation Company 872-1-89-6				P.O. Box 2102	Orinda	CA	94563		
RESIDENTIAL									
Lion Creek Crossings Luxury Affordable Living				6951 Lion Way	Oakland	CA	94612	855-213-1501	lion_creek_crossings@related.com
Resident				1109 66th Avenue	Oakland	CA	94612		
Resident				6235 Tevis Street	Oakland	CA	94612		
Resident				1016 66th Avenue	Oakland	CA	94612		
Resident				1101 65th Avenue	Oakland	CA	94612		
Resident				905 66th Avenue	Oakland	CA	94612		
Resident				6399 Fenham Street	Oakland	CA	94612		
MEDIA									
The Oakland Tribune	Walker	Chris	Executiv News Editor	1970 Broadway Street, Suite 100	Oakland	CA	94621	925-943-8134	cwalker@bayareanewsgroup.com
The Oakland Tribune	Bender	Kristin	Reporter	1970 Broadway Street, Suite 100	Oakland	CA	94621	510-208-6453	kbender@bayareanewsgroup.com