

ExxonMobil
Environmental Services Company
4096 Piedmont Avenue #194
Oakland, California 94611
510 547 8196 Telephone
510 547 8706 Facsimile

Jennifer C. Sedlachek
Project Manager

RECEIVED

3:10 pm, Sep 06, 2011

Alameda County
Environmental Health

ExxonMobil

August 31, 2011

Ms. Barbara Jakub, P.G.
Alameda County Health Care Services Agency
Department of Environmental Health
1131 Harbor Bay Parkway, Room 250
Alameda, California 94502-6577

RE: Former Exxon RAS #70238/2200 East 12th Street, Oakland California.

Dear Ms. Jakub:

Attached for your review and comment is a copy of the letter report entitled *Department of Water Resources Well Survey*, dated August 31, 2011, for the above-referenced site. The report was prepared by Cardno ERI of Petaluma, California, and details activities at the subject site.

I declare, under penalty of perjury, that the information and/or recommendations contained in the attached document or report is true and correct to the best of my knowledge.

If you have any questions or comments, please contact me at 510.547.8196.

Sincerely,



Jennifer C. Sedlachek
Project Manager

Attachment: Cardno ERI's *Department of Water Resources Well Survey*, dated August 31, 2011

cc: w/ attachment
Mr. Shay Wideman, The Valero Companies, Environmental Liability Management

w/o attachment
Ms. Janice A. Jacobson, Cardno ERI



Cardno ERI
License A/C10-611383

601 North McDowell Blvd.
Petaluma, CA 94954-2312
USA

Phone 707 766 2000
Toll-free 800 382 9105
Fax 707 789 0414
www.cardno.com

www.cardnoeri.com

August 31, 2011
Cardno ERI 229314.L53

Ms. Jennifer C. Sedlachek
ExxonMobil Environmental Services
4096 Piedmont Avenue, #196
Oakland, California 94611

SUBJECT Department of Water Resources Well Survey
Former Exxon Service Station 70238
2200 E. 12th Street, Oakland, California

Ms. Sedlachek:

At the request of ExxonMobil Environmental Services (EMES), on behalf of Exxon Mobil Corporation, Cardno ERI prepared this letter outlining the results of a Department of Water Resources (DWR) well survey. The Alameda County Health Care Services Agency, Environmental Health Services (ACEH), requested a review of DWR records within a ¼-mile radius of the site as part of Case Closure Summary activities.

Cardno ERI contacted the DWR and obtained well completion records indicating that there are not active municipal wells within a ¼-mile radius of the site (Appendix A).

A review of well information provided by the DWR indicates that 12 monitoring wells, and two test wells, have been installed at six properties within a ¼-mile radius of the site (Plate 2).

One well log was obtained for a property identified as California Cotton Mills, Oakland. Historical data indicates that the California Cotton Mills was located at the intersection of Calcot Place and 11th Street, approximately 0.14 mile south of the site. The DWR file consisted of one page with a well log and the DWR number. The boring was advanced 345 feet bgs; however, the log did not list other well information.

Cardno ERI personnel reviewed 2010 Alameda Public Works well data and determined that no municipal wells or domestic wells are on record with the Agency within 0.25 miles of the site.

On June 15, 2011, Cardno ERI personnel conducted a site visit. The California Cotton Mill has been converted into residential lofts. There were no visual indications of a well on the property and an East Bay Municipal Utility District water vault was located servicing the building. Cardno ERI personnel contacted the building manager via electronic correspondence and were told that there was no well on the property.

August 31, 2011
Cardno ERI 229314.L53 Former Exxon Service Station 70238,Oakland, California

Please contact Ms. Janice A. Jacobson, Cardno ERI's project manager for this site, at (707) 766-2000 with any questions regarding this site.

Sincerely,



SCANNED
IMAGE
For

Rebekah A. Westrup
Senior Staff Geologist
for Cardno ERI
707 766 2000
Email: rebekah.westrup@cardno.com

SCANNED
IMAGE
Heidi Dieffenbach-Carle

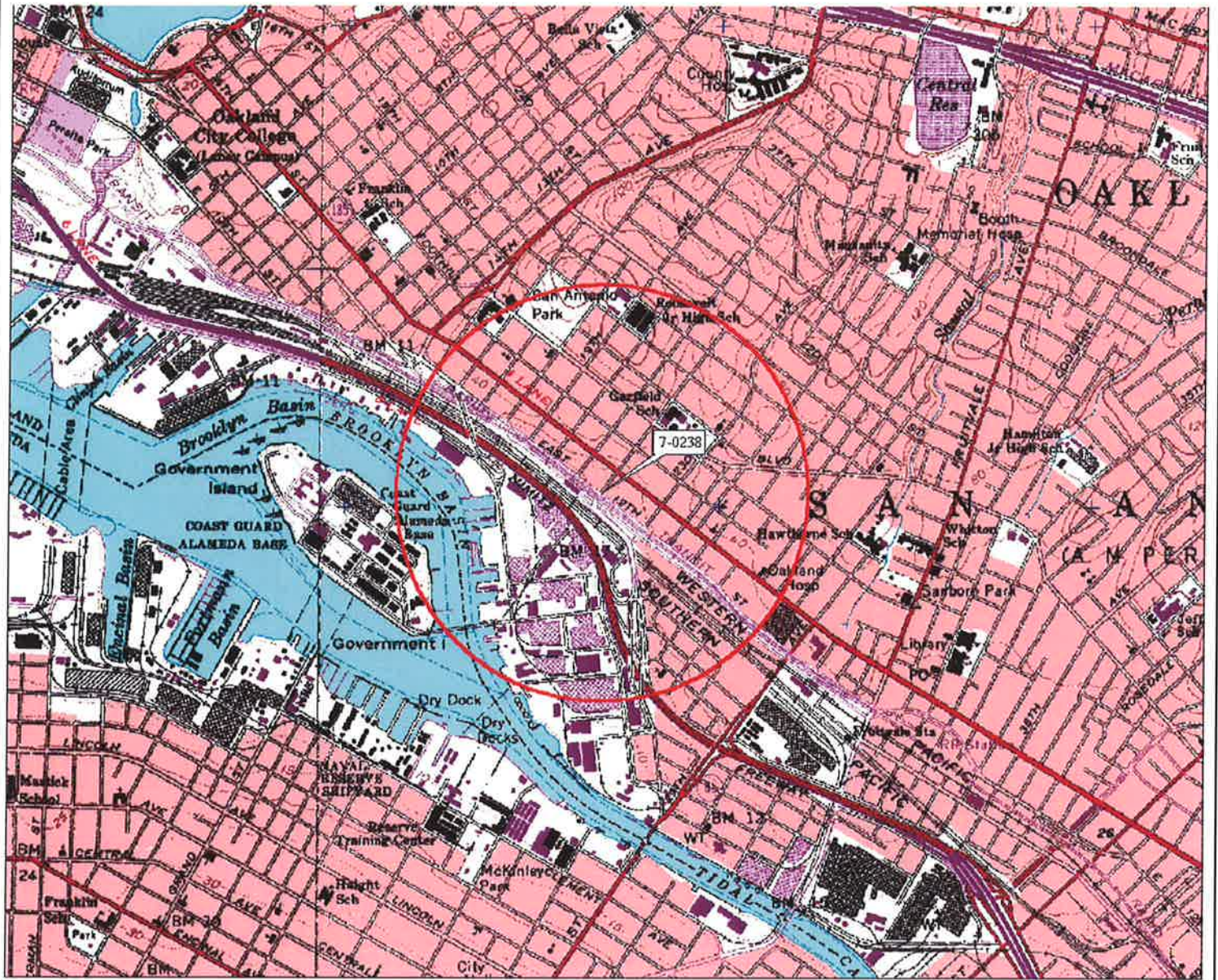
Heidi Dieffenbach-Carle
P.G. 6793
for Cardno ERI
707 766 2000
Email: heidi.dieffenbach-carle@cardno.com

cc: Ms. Barbara Jakub, P.G., Alameda County Health Care Services Agency, Department of Environmental Health, 1131 Harbor Bay Parkway, Room 250, Alameda, California 94502-6577

Mr. Shay Wideman, The Valero Companies, Environmental Liability Management, P.O. Box 696000, San Antonio, Texas 78269

Enclosures:

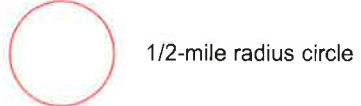
- Plate 1 Site Vicinity Map
- Plate 2 Local Area Map
- Table 1 Well Details Within a Quarter Mile Radius
- Appendix A Boring Logs and DWR Reports



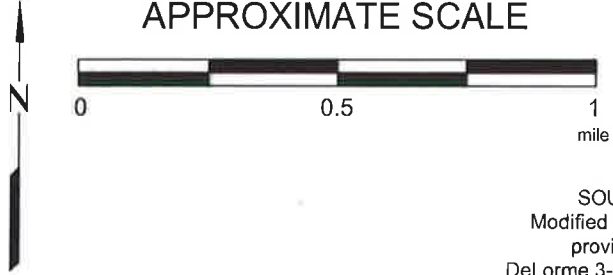
3-D TopoQuads Copyright © 1999 DeLorme Enclosure, NH 04006 Source Data: USGS 650 ft Scale: 1 : 19,200 Datum: NAD 83 Projection: WGS84

FN 2293TOPO

EXPLANATION



APPROXIMATE SCALE

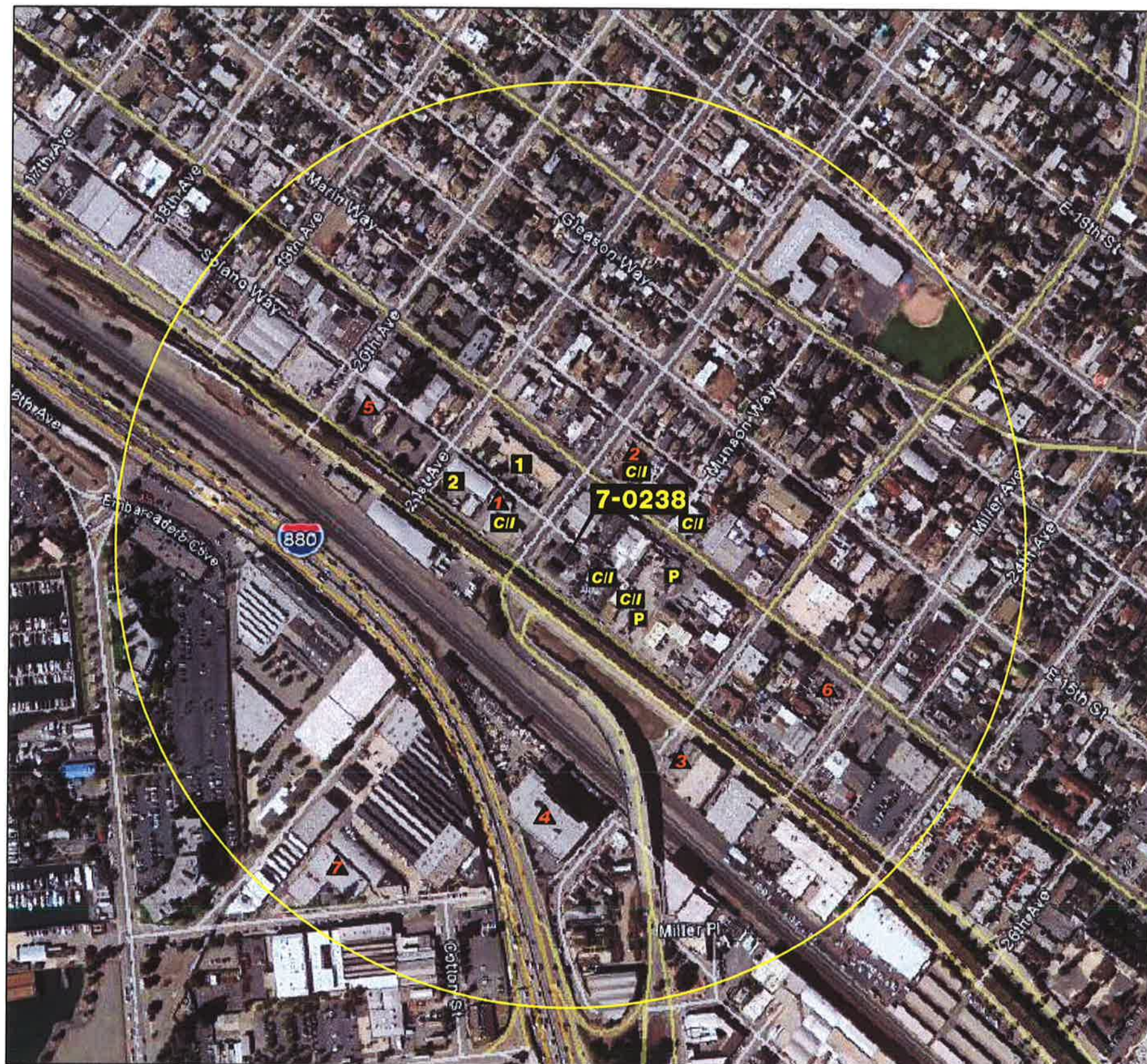


SOURCE:
Modified from a map
provided by
DeLorme 3-D TopoQuads



SITE VICINITY MAP
FORMER EXXON SERVICE STATION 70238
2200 East 12th Street
Oakland, California

PROJECT NO.
2293
PLATE
1



LEGEND

- CI** Commercial / Industrial
- VAC** Vacant Lot
- P** Parking Lot
- R** Additional Residential

WELLS



WELLS Well Registered With The DWR

- 1** 2142 E. 12 Street
- 2** 2200 International Boulevard
- 3** 2301 E. 12 Street
- 4** California Cotton Mills
- 5** 2032 E. 12 Street
- 6** 2345 International Boulevard
- 7** 2100 Livingston Street

RESIDENCES

- 1** None

PUBLIC USE AREAS

- 1** Life Academy High School
- 2** East Bay First Baptist Church

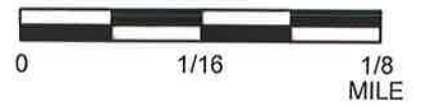
SURFACE WATER

- 1** None



1/4 MILE RADIUS

APPROXIMATE SCALE



LOCAL AREA MAP

FORMER EXXON SERVICE STATION 70238
 2200 East 12th Street
 Oakland, California



PROJECT NO.	2293
PLATE	2
DATE:	4/17/06

TABLE 1
WELL DETAILS WITHIN A QUARTER MILE RADIUS
Former Exxon Service Station 70238
2200 E. 12th Street
Oakland, California

Local Area Map No.	Well ID	Distance from Site (miles)	Address	Total Depth of Well (feet bgs)	Screen Interval (feet bgs)	Diameter (inches)	Use
1	MW1	0.03	2142 E. 12th Street	20	3-20	8	Monitoring
	MW2	0.03	2142 E. 12th Street	20	3-20	8	Monitoring
	MW3	0.03	2142 E. 12th Street	20	3-20	8	Monitoring
	MW4	0.03	2142 E. 12th Street	20	3-20	8	Monitoring
2	MW1	0.08	2200 E. 14th Street (International Blvd.)	20.8	8-20.8	10.25	Monitoring
	MW2	0.08	2200 E. 14th Street (International Blvd.)	18.7	4.5-18.7	10.25	Monitoring
	MW3	0.08	2200 E. 14th Street (International Blvd.)	21	Unknown	Unknown	Monitoring
3	MW1	0.11	2301 E. 12th Street	28	13-28	8	Monitoring
4	Unknown	0.14	California Cotton Mills	345	Unknown	Unknown	Unknown
5	MW1	0.15	2032 E. 12th Street	27	7-27	8	Monitoring
	MW2	0.15	2032 E. 12th Street	27	7-27	8	Monitoring
	MW3	0.15	2032 E. 12th Street	27	7-27	8	Monitoring
6	MW1	0.2	2345 E. 14th Street (International Blvd.)	35	15-35	8	Test
	MW2	0.2	2345 E. 14th Street (International Blvd.)	35	15-35	8	Test
7	MW1	0.21	2100 Livingston Street	24.5	14.5-24.5	10	Monitoring

Notes:

bgs = Below ground surface.

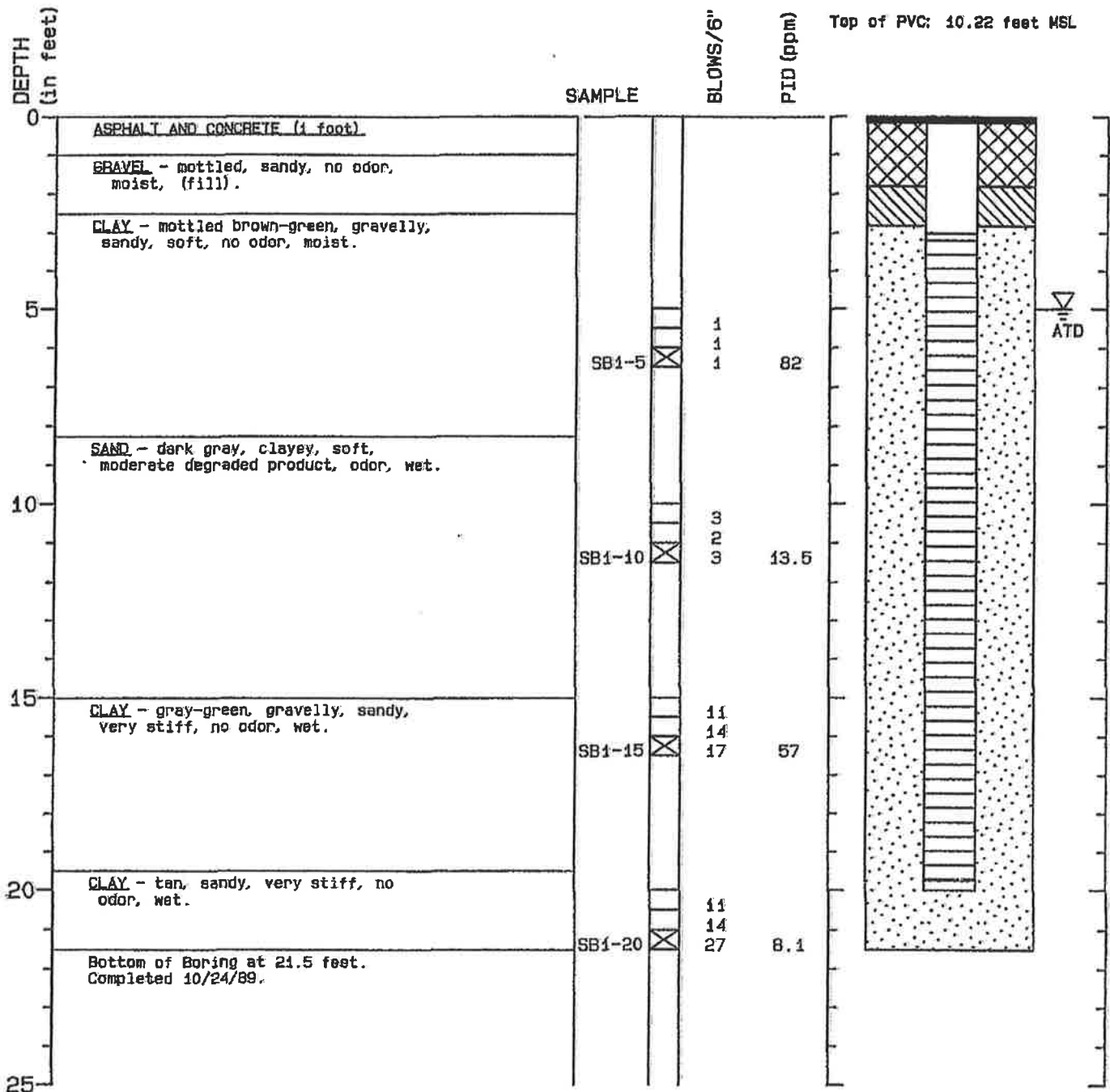
APPENDIX A
BORING LOGS AND DWR REPORTS

Boring Log SB-1 (MW-1)

Geologic Log

25/32629
01-454P

Monitoring
Well Design



1. Refer to Figure A-1 for explanation of descriptions and symbols.
2. Soil description and stratum lines are interpretive and actual changes may be gradual.
3. No free water encountered.



HARTCROWSER

J-6003

12/89

Figure A-2

CONFIDENTIAL

STATE OF CALIFORNIA DWR
WELL COMPLETION REPORT
(WELL LOGS)

REMOVED

CONFIDENTIAL

STATE OF CALIFORNIA DWR
WELL COMPLETION REPORT
(WELL LOGS)

REMOVED

CONFIDENTIAL

**STATE OF CALIFORNIA DWR
WELL COMPLETION REPORT
(WELL LOGS)**

REMOVED

CONFIDENTIAL

STATE OF CALIFORNIA DWR
WELL COMPLETION REPORT
(WELL LOGS)

REMOVED

CONFIDENTIAL

STATE OF CALIFORNIA DWR
WELL COMPLETION REPORT
(WELL LOGS)

REMOVED

CONFIDENTIAL

STATE OF CALIFORNIA DWR
WELL COMPLETION REPORT
(WELL LOGS)

REMOVED

CONFIDENTIAL

STATE OF CALIFORNIA DWR
WELL COMPLETION REPORT
(WELL LOGS)

REMOVED

CONFIDENTIAL

STATE OF CALIFORNIA DWR
WELL COMPLETION REPORT
(WELL LOGS)

REMOVED

CONFIDENTIAL

**STATE OF CALIFORNIA DWR
WELL COMPLETION REPORT
(WELL LOGS)**

REMOVED

CONFIDENTIAL

STATE OF CALIFORNIA DWR
WELL COMPLETION REPORT
(WELL LOGS)

REMOVED

CONFIDENTIAL

STATE OF CALIFORNIA DWR
WELL COMPLETION REPORT
(WELL LOGS)

REMOVED

CONFIDENTIAL

STATE OF CALIFORNIA DWR
WELL COMPLETION REPORT
(WELL LOGS)

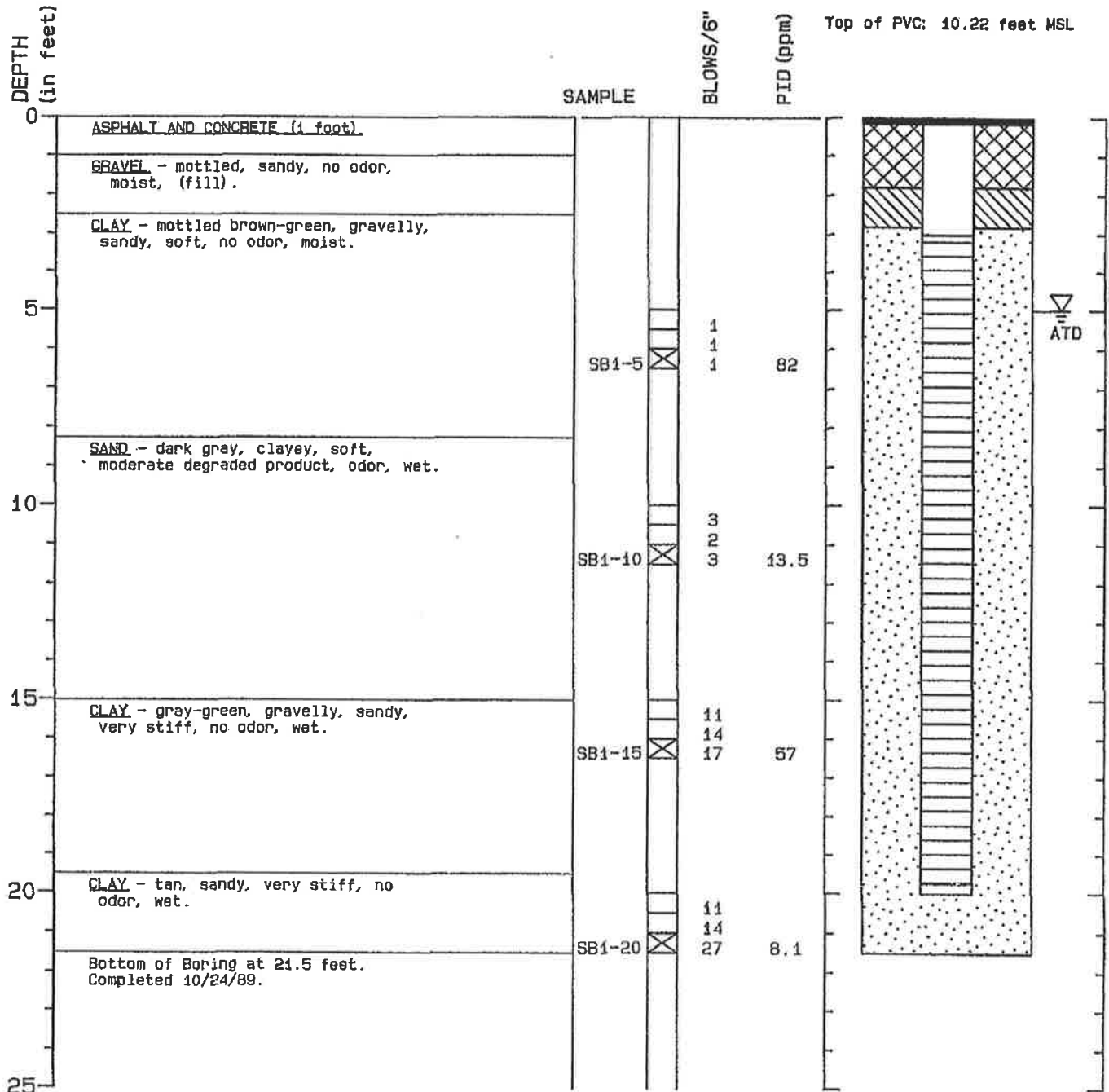
REMOVED

Boring Log SB-1 (MW-1)

25/32629
01-454P

Geologic Log

Monitoring
Well Design



1. Refer to Figure A-1 for explanation of descriptions and symbols.
2. Soil description and stratum lines are interpretive and actual changes may be gradual.
3. No free water encountered.



HARTCROWSER

J-6003

12/89

Figure A-2

CONFIDENTIAL

STATE OF CALIFORNIA DWR
WELL COMPLETION REPORT
(WELL LOGS)

REMOVED

CONFIDENTIAL

STATE OF CALIFORNIA DWR
WELL COMPLETION REPORT
(WELL LOGS)

REMOVED

CONFIDENTIAL

**STATE OF CALIFORNIA DWR
WELL COMPLETION REPORT
(WELL LOGS)**

REMOVED

CONFIDENTIAL

STATE OF CALIFORNIA DWR
WELL COMPLETION REPORT
(WELL LOGS)

REMOVED

CONFIDENTIAL

STATE OF CALIFORNIA DWR
WELL COMPLETION REPORT
(WELL LOGS)

REMOVED

CONFIDENTIAL

STATE OF CALIFORNIA DWR
WELL COMPLETION REPORT
(WELL LOGS)

REMOVED

CONFIDENTIAL

STATE OF CALIFORNIA DWR
WELL COMPLETION REPORT
(WELL LOGS)

REMOVED

CONFIDENTIAL

STATE OF CALIFORNIA DWR
WELL COMPLETION REPORT
(WELL LOGS)

REMOVED

CONFIDENTIAL

**STATE OF CALIFORNIA DWR
WELL COMPLETION REPORT
(WELL LOGS)**

REMOVED

CONFIDENTIAL

STATE OF CALIFORNIA DWR
WELL COMPLETION REPORT
(WELL LOGS)

REMOVED

CONFIDENTIAL

STATE OF CALIFORNIA DWR
WELL COMPLETION REPORT
(WELL LOGS)

REMOVED

CONFIDENTIAL

STATE OF CALIFORNIA DWR
WELL COMPLETION REPORT
(WELL LOGS)

REMOVED