

ALAMEDA COUNTY HEALTH CARE SERVICES AGENCY

Alex Briscoe, Agency Director



FACT SHEET ON ENVIRONMENTAL ASSESSMENT

Bill Chun Service Station

2301 Santa Clara Avenue, Alameda, CA 94501

SLIC No. RO0000382 and

GeoTracker Global ID T0600100980

Distributed September 30, 2013

Site Remediation Summary

This fact sheet has been prepared to inform community members and other interested stakeholders regarding the status of a proposed soil and groundwater cleanup at the Bill Chun Service Station site located at 2301 Santa Clara Avenue, Alameda, California. Ms. Fong, the lead responsible party for the fuel leak case, is proposing groundwater recirculation enhanced bioremediation as the remediation alternative to clean up the site.

Site Background

The site is located at 2301 Santa Clara Avenue, in the City and County of Alameda, California. The rectangular lot measures approximately 85 feet long by 40 feet wide. The site is occupied by a small kiosk, a canopy, and a garage. The project site is located in a mostly commercial area with some residential buildings. The site is bordered by Oak Street to the northwest, a meeting hall and residences to the northeast and east, a retail store to the southeast (formerly Towata Flowers) and by Santa Clara Avenue to the southwest. The site operated as a gasoline service station from as early as 1915 until 1991. During the removal of three underground storage tanks (USTs) and associated piping and dispensers in 1992, petroleum hydrocarbons were detected in soil samples collected beneath the USTs and fuel islands. Subsequent to the UST removal, environmental investigations were conducted to define the nature and extent of contamination.

Remediation Alternative: Groundwater Recirculation Enhanced Bioremediation

Groundwater recirculation enhanced bioremediation is the proposed remedial action to cleanup soil and groundwater contaminated with total petroleum hydrocarbons as gasoline (TPHg), benzene, toluene, ethylbenzene, xylenes (BTEX), and naphthalene at the site. The proposed remedial action will include construction of a groundwater recirculation system, and injection throughout the system of dissolved oxygen and/or nitrate (as electron acceptors), and a mixture of nutrients, to stimulate microbial growth and promote accelerated degradation of petroleum hydrocarbon, BTEX, and naphthalene compounds. The recirculation system will include continuously-operated injection and extraction wells utilized to

ENVIRONMENTAL HEALTH SERVICES ENVIRONMENTAL PROTECTION

1131 Harbor Bay Parkway, Suite 250

Alameda, CA 94502-6577

(510) 567-6700

FAX (510) 337-9335

pump groundwater to a central treatment system and then re-inject the treated groundwater back into the site's subsurface, including in areas of unsaturated (vadose zone) soils where the recirculated and treated water will infiltrate soil pore space for enhanced biodegradation of site constituents of concern. Many of the existing site monitoring wells will be converted to extraction and/or injection wells prior to system operations; however, two new injection wells and three new extraction wells will be installed in order to create optimal system performance. A system controller will be installed in a protected area on site and be monitored weekly during system operation.

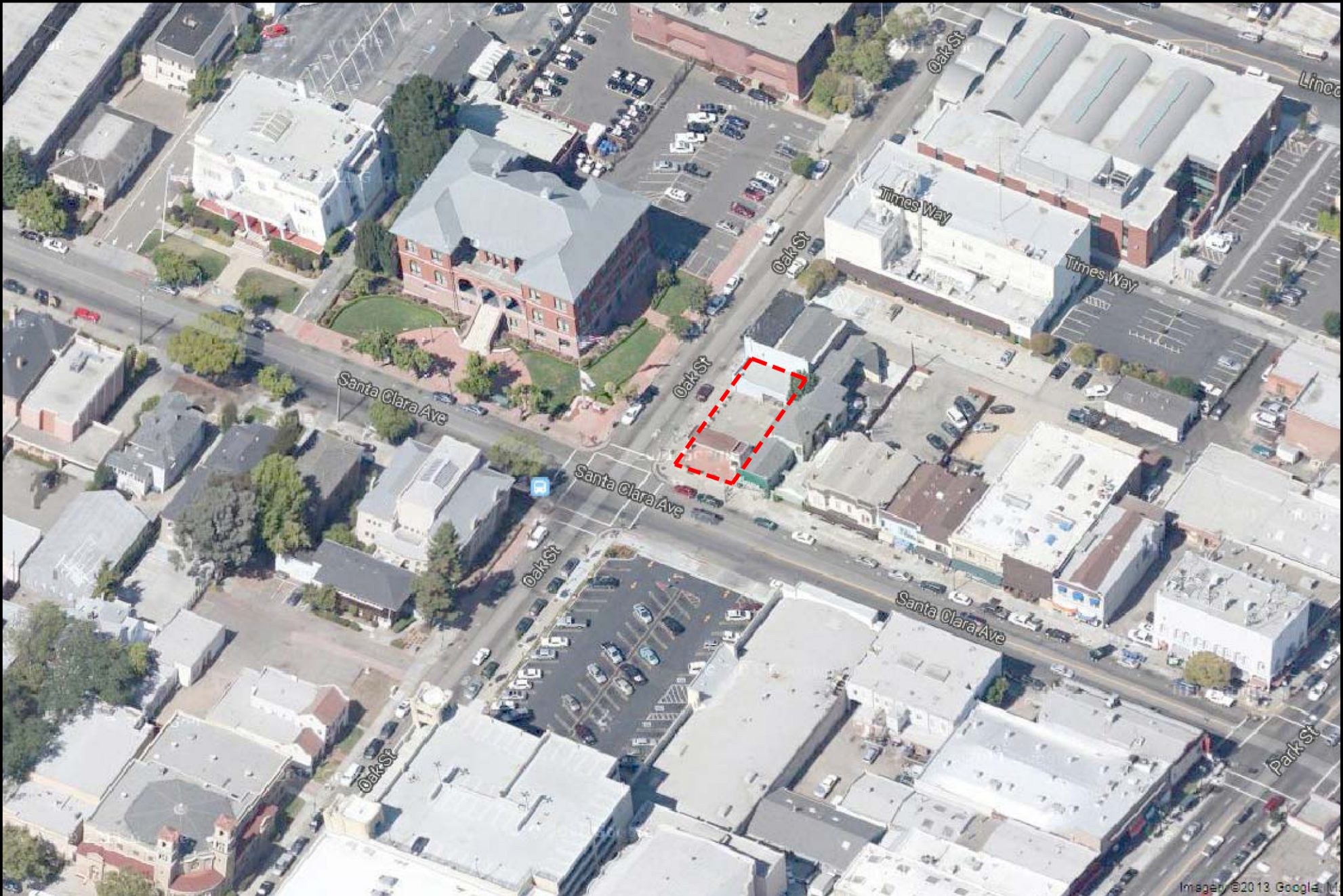
Next Step

Ms. Fong is working with Alameda County Environmental Health (ACEH) to implement the proposed remedial action for site soil and groundwater cleanup. The remedial action is further described in a Corrective Action Plan (CAP) dated August 1, 2013, which was prepared by Ninyo and Moore on behalf of Ms. Fong. The public is invited to review and comment on the proposed remedial action. The reports are available on ACEH's website (<http://www.acgov.org/aceh/lop/ust.htm>) or the State Water Resources Control Board's GeoTracker website (<http://www.geotracker.waterboards.ca.gov/>). Please send written comments regarding the corrective action to Jerry Wickham at the address below. All written comments received by **October 30, 2013** will be forwarded to the Responsible Party and will be considered and responded to prior to a final determination on the proposed cleanup.

For Additional information, please contact:

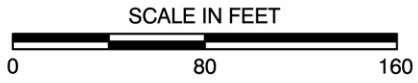
Jerry Wickham
Senior Hazardous Materials
Specialist
Alameda County Environmental
Health
1131 Harbor Bay Pkwy, Ste 250
Alameda, CA 94502
Office: 510-567-6791
Cell: 510-773-0352
E-mail: jerry.wickham@acgov.org


Peter D. Sims, LEED AP
Project Environmental Geologist
Ninyo & Moore
1956 Webster Street, Ste 400
Oakland CA 94612
Office: 510-343-3000 x15216
Cell: 510-327-9335
E-mail: psims@ninyoandmoore.com



Images ©2013 Google, Inc.

REFERENCE: GOOGLE MAP, 2013.



LEGEND	
	SITE BOUNDARY OF BILL CHUN SERVICE STATION AT 2301 SANTA CLARA AVENUE ALAMEDA, CALIFORNIA

NOTE: DIMENSIONS, DIRECTIONS AND LOCATIONS ARE APPROXIMATE.