



RECEIVED

By loprojectop at 8:53 am, Jan 31, 2006

QUARTERLY GROUNDWATER MONITORING REPORT

October 14, 2005

Sheaff's Garage
5930 College Avenue
Oakland, California


ACHCSA Fuel Leak Case No. RO0000377

Prepared For:

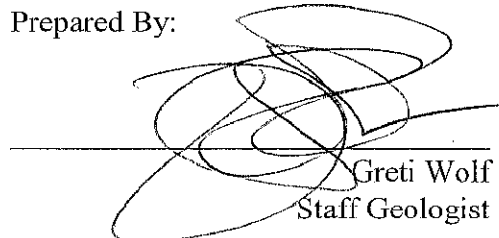
William G. Sheaff TTE Trust
Dr. Brian Sheaff
1945 Parkside Drive
Concord, CA 94519

GGTR Project No. 7335
January 27, 2006

Reviewed By:


Mark Youngkin
Registered Geologist CEG 1380

Prepared By:


Greti Wolf
Staff Geologist

RECEIVED

By lopprojectop at 8:54 am, Jan 31, 2006

QUARTERLY GROUNDWATER MONITORING REPORT October 14, 2005

5930 College Avenue, Oakland, California

Introduction

This report presents the results and findings of the October 14, 2005 groundwater monitoring and sampling activities conducted by Golden Gate Tank Removal, Inc. (GGTR) at 5930 College Avenue in Oakland, California. This was the 20th quarterly monitoring event performed at the site for the three existing monitor wells, MW1 through MW3, and the third monitoring and sampling event for the piezometer well, PW1, installed at the site in April 2005. The ACHCSA has designated the site as Fuel Leak Case No. RO000377. Figure 1, *Site Location Map*, shows the general location of the subject property in Oakland, California. The site, adjacent properties, and associated features are shown on the revised Figure 2, *Site Plan*. The groundwater elevation isocontour lines and associated gradient is shown on Figure 3, *Groundwater Elevation Potentiometric Map*. Table 1, *Historical Results of Groundwater Sample Analysis & Fluid-Level Data*, provides a tabulated summary of the laboratory results of historical groundwater sample analyses and fluid-level monitoring data at the site.

Gettler-Ryan, Inc. of Dublin, California is currently conducting a separate groundwater investigation for the former Chevron Station #20-9339 located adjacent to the north side of the subject property at 5940 College Avenue. Two groundwater monitoring wells (GR-MW1 & GR-MW2) are used to evaluate the hydrocarbon concentrations in groundwater at this site.

GGTR and Gettler-Ryan, Inc. have conducted joint monitoring and sampling activities at the associated sites on a quarterly basis since October 2000. As of the April 8, 2002 monitoring event, Gettler-Ryan has decreased their monitoring schedule to a biannual basis. Gettler-Ryan, Inc. performed their most recent joint/biannual monitoring and sampling of GR-MW1 & GR-MW2 on October 14, 2005. Figures 2 and 3 show the location of each Gettler-Ryan well relative to the subject wells at 5930 College Avenue.

Site Location and Description

The subject commercial property is located at 5930 College Avenue, along the east side of College Avenue between Harwood Street and Chabot Road in Oakland, California. The site lies approximately 0.2 mile (1,000 feet) north of Highway 24 and approximately 2.5 miles east of Interstate 80 and the San Francisco Bay. The general location of the site is shown on the attached Figure 1, *Site Location Map*.

The property is currently occupied by Stoddard Automotive, for the service and repair of automobiles. No active fuel storage or distribution system currently occupies the site. The site is approximately 5,500 square feet in area with about 75% utilized by a covered warehouse/garage and 25% used as an exterior (uncovered) storage yard. The ground surface of the entire property is paved with concrete. The elevation of the site is approximately 195 feet above Mean Sea Level (Figure 1). Figure 2 presents a *Site Plan* showing pertinent site structures and adjacent properties.

The property is relatively flat lying with the topographic relief in the immediate vicinity of the site generally directed toward the southwest (Figure 1). Regional topographic relief appears to be directed toward the west-southwest in the general direction of the San Francisco Bay. One 675-gallon gasoline UST and one 340-gallon waste oil UST were located beneath the sidewalk at the southwest corner of the site (Figure 2). The tanks were removed by GGTR in August 1996. A brief discussion of the tank removal activities is presented herein.

Site Geology and Hydrogeology

According to a Geologic Map of the San Francisco-San Jose Quadrangle published by the California Department of Conservation, the site is underlain by up to 500 feet of dissected Quaternary alluvium deposited on marine sandstone, shale and conglomerate of the Mesozoic Franciscan Complex and possibly Mesozoic, cretaceous marine sedimentary rocks of the Great Valley Sequence (thicknesses not established). Native subsurface soil encountered at the site during the additional soil and groundwater investigation activities was predominantly a moist, dark yellowish brown, clayey silt up to approximately 7 fbg, overlying a dark yellowish brown and dark greenish gray, silty clay up to approximately 15 fbg. Moist to wet, clayey silt/sand and silty clay lenses extend up to a total explored sample depth of 20 fbg. Soil observed in soil borings B10 and B11 was predominantly clayey, sandy silt.

The average depth to groundwater as measured in MW1-MW3 and PW-1, during the October 2005 monitoring event was approximately 9.77 fbg, with an associated mean groundwater elevation of 186.38 feet above Mean Sea Level. The associated groundwater gradient across the site historically has ranged between 0.005 (July 2001) and 0.032 (October 2002) foot per foot and the flow direction has fluctuated between 11° west of south (October 1999) to 71° east of north (October 2002).

The regional groundwater flow in the vicinity of the site is assumed to be towards the west-southwest, in the direction of the San Francisco Bay, and generally following the natural topographic relief of the area. *At this time, with no risk-based corrective action study performed to date at the site, shallow groundwater beneath the site is considered a potential drinking water source.*

The nearest surface water body is Claremont Creek, flowing southwest, with surface water flow ending approximately 0.9 mile northeast of the site. Creek flow then appears to continue southwest via an intermittent underground culvert and an open surface channel, and generally parallels Claremont Avenue towards its intersection with College Avenue, located approximately 0.1 mile (525 feet) north of the site (Figure 1). Lake Temescal, situated at an elevation approximately 200 feet higher than the site, is located approximately 1.1 miles east of the subject property, with effluent flow directed generally southeast.

Groundwater Sampling Field Procedures

On October 14, 2005 GGTR monitored and sampled MW1 through MW3 and PW1, in accordance with the requirements and procedures of the California Regional Water Quality Control Board, San Francisco Bay Region (RWQCB) and the ACHCSA. Prior to purging and sampling, GGTR removed the well cover and locking compression cap from each well and allowed the groundwater in each well column to stabilize for approximately 20 minutes. GGTR then measured and recorded the depth to groundwater and presence of floating product using a Keck® electronic oil/water interface probe. GGTR also measured the dissolved oxygen (DO) of the groundwater (in situ) using a YSI55® DO meter to assess the occurrence of biodegradation in shallow groundwater beneath the site. DO was measured prior to purging only. Fluid levels were measured relative to the north side of the top of each well casing to the nearest 0.01 foot.

GGTR then purged a minimum of three casing volumes from each well using a direct current, centrifugal purge pump, and simultaneously monitored and recorded the pH, temperature, specific conductivity, and oxidation reduction potential (ORP) of the purged well water. Well purge water was transferred directly to a 55-gallon, D.O.T.-approved steel drum. After the groundwater in each well recharged to approximately 80% of its original level, GGTR collected a groundwater sample by lowering a disposable, bottom-fill, polyvinyl chloride (PVC) bailer to just below the well's air-water interface. The bailer was immediately removed from the well and the groundwater was carefully decanted from the bailer into pre-cleaned, laboratory-provided sample containers. All volatile organic analysis (VOA) vials were inverted and checked to insure that no entrapped air was present. The samples were sealed with Teflon caps, properly labeled, and stored in a cooler chilled to approximately 4°C.

Water Sample Analytical Methods

On October 17, 2005, GGTR submitted the groundwater samples collected from the three monitoring wells and piezometer well under formal chain of custody command to Entech Analytical Labs, Inc. State-certified, analytical laboratory (CA ELAP #2346) in Santa Clara, California for laboratory analysis of the following fuel constituents:

- Gasoline Range Organics (TPH-G; GC-MS)
- Benzene, Toluene, Ethylbenzene and total Xylenes (BTEX; EPA8260)
- Methyl Tertiary-Butyl Ether (MTBE; EPA8260)
- VOCs (GC/MS Method 8260B)

Entech completed all volatile organic analyses by October 21, 2005, which is in conformance with the 14-day required time limit for analysis. GGTR submitted all analytical data in electronic deliverable format in accordance with the State Water Resources Control Board Assembly Bill 2886 for submission to the State's GeoTracker database system. The analytical results for this event as well as those reported during historical monitoring events at the site are presented in Table 1. A copy of the Laboratory Certificates of Analysis, associated Chain of Custody Record, and Fluid-Level Monitoring and Well Purge/Sampling Data Sheets and Sampling Data Sheets are included in the Appendix.

Quality Assurance / Quality Control

Quality Assurance and Quality Control details are shown on the laboratory Certificates of Analysis in the Appendix. The laboratory reported no quality assurance or quality control problems during the laboratory analysis procedures. All samples were analyzed within specified laboratory holding times.

Groundwater Monitoring Results

The groundwater elevations measured relative to the top of well casing in MW1 through MW3 and PW1 ranged between 186.32 (MW1) and 186.46 (PW1) feet above Mean Sea Level.

To assess the historically fluctuating groundwater flow directions at the site, GGTR calculated the groundwater gradient for the October 2005 event using groundwater elevation data from both 1) MW1 through MW3 and 2) MW1, MW3, and PW1. Both sets of data will be calculated for the next monitoring event and compared to regional groundwater flow direction data (west-southwest) to assess potential consistency over a period of three to four consecutive quarters. The gradient and flow direction for the two sets of data measured during the October 2005 event were approximately 0.002 ft/ft, directed 27° west of north, and 0.002 ft/ft 54° west of south, respectively. The associated groundwater gradient data calculated for the October 14, 2005 monitoring event is shown in Figure 3, *Groundwater Elevation Potentiometric Map*.

The table shown on the following page lists the historical data for MW1 through MW3, for mean groundwater elevation, flow direction, and groundwater slope for the site. The groundwater elevations prior to October 14, 2001 are referenced to an arbitrary site-specific datum point (MW1; north side of top of well casing) with an assumed elevation of 50 feet. This arbitrary datum point is not referenced to Mean Sea Level. Figure 4 presents a *Rose Diagram* showing the historical hydraulic gradients (magnitude and direction) to date across the site. The current gradient data, incorporating that of PW1, is shown in bold type.

Table - Mean Groundwater Elevation, Flow Direction, and Gradient

Measurement Date	Mean Groundwater Elevation (feet)	Groundwater Flow Direction	Gradient (feet / 100 feet)
10/07/99	39.87	11° west of south	0.67 foot / 100 feet
01/26/00	43.1	23° west of north	9.12 feet / 100 feet
10/25/00	39.96	40° east of north	0.64 foot / 100 feet
04/25/01	188.6	55° west of north	0.69 foot / 100 feet
07/10/01	186.26	4° east of north	0.5 foot / 100 feet
10/08/01	184.99	48° east of north	1.6 feet / 100 feet
01/07/02	191.63	52° west of south	2.3 feet / 100 feet
04/08/02	188.94	43° east of south	0.6 foot / 100 feet
07/09/02	186.63	51° west of north	0.7 foot / 100 feet
10/23/02	184.50	71° east of north	3.2 foot / 100 feet
10/15/03	185.14	28° east of north	1.0 foot / 100 feet
02/02/04	188.47	18° east of south	0.5 foot / 100 feet
04/23/04	189.00	77° east of south	0.5 foot / 100 feet
07/19/04	186.97	51° west of north	0.1 foot / 100 feet
10/22/04	186.49	82° west of north	2.9 foot / 100 feet
01/21/05	190.36	16° west of south	1.25 foot / 100 feet
04/14/05	190.01	13° east of south 76° east of south	1.10 foot / 100 feet 1.60 foot / 100 feet
07/26/05	188.37	56° west of north 78° west of north	0.08 foot / 100 feet 0.26 foot / 100 feet
10/14/05	186.38	27° west of north 54° west of south	0.2 foot / 100 feet 0.2 foot / 100 feet

Results of Groundwater Sampling and Laboratory Analysis

The table shown on the following page summarizes the laboratory analytical results of groundwater samples collected during the October 14, 2005 monitoring event. Documentation of the well purging and sampling activities is contained in the Field Data Sheets of the Appendix.

October 14, 2005 Groundwater Sampling Results

Well ID	Sample ID	TPH-G (ug/L)	BTEX (ug/L)	MTBE (ug/L)	VOCs (ug/L)
MW1	7335-MW1	64000	13000/5700/3400/16000	ND	2700 - 1,2,4-Trimethylbenzene
MW2	7335-MW2	13000	2900/100/1300/1200	130	770 - 1,2,4-Trimethylbenzene
MW3	7335-MW3	6100	76/19/170/350	ND	210 - 1,2,4-Trimethylbenzene
PW1	7335-PW-1	4300	93/1.2/100/140	ND	120 - 1,2,4-Trimethylbenzene 67 - 1,3,5- Trimethylbenzene 29 - cis-1,2-Dichloroethene 28 - Isopropylbenzene 17 - n-Butylbenzene 72 - Propylbenzene 43 - Napthalene 12 - sec-Butylbenzene 25 - Tetrachloroethene 4.1 - Trichloroethene

Notes: TPH-G - Total Petroleum Hydrocarbons as Gasoline (EPA Methods 5030C)
 BTEX - Benzene / Toluene / Ethylbenzene / Xylenes (EPA Methods 8260B)
 MTBE - Methyl Tertiary Butyl Ether (EPA Method 8260B)
 VOC - Volatile Organic Compounds (EPA Method 8260; Total Concentration)
 ug/L - micrograms per liter (equivalent to parts per billion - ppb)
 ND - not detected above laboratory reporting limit (See QC/QA, Lab Report)
 * - MTBE concentration as confirmed by VOC and/or Fuel Oxygenate analysis

As requested by the ACHCSA in their letter dated June 3, 2004, groundwater monitoring should continue at the site on a quarterly basis. All quarterly groundwater samples should be analyzed for TPH-G, BTEX, and MTBE by EPA Methods 8015M/8021B, and VOCs by EPA Method 8260. Monitoring of DO and ORP should be continued to further evaluate the biodegradation potential in the shallow groundwater beneath the site.

GeoTracker AB2886 EDF Upload

In general accordance with State Assembly Bill 2886, GGTR uploaded the fluid-level monitoring data associated with the October 14, 2005 event in electronic deliverable format to the State Water Resources Control Board's GeoTracker Database System. The GeoTracker Upload Confirmation Number is **5610752701** An AB2886 Electronic Delivery

confirmation reports copy (GEO_Well) corresponding to submittal title Fluid-Level Monitoring Data (MW1-MW3, PW1) is included in the Appendix.

GGTR uploaded all groundwater sample analytical results associated with the October 14, 2005 event in electronic deliverable format to the State GeoTracker Database System. A copy of the Upload Confirmation Number **1188632249** corresponding to Lab Number/Submittal Title 45825: 10/14/2005 GW Analytical Data (MW1-MW3, PW1) is included in the Appendix.

Waste Management

The well purge and equipment wash and rinse water generated during the October 2005 monitoring event (@ 30 gallons) was transferred directly to a D.O.T.-approved, 55-gallon drum, appropriately labeled and stored onsite in a secure area, to be used for future groundwater monitoring events.

Environmental Site History & Chronology

In August 1996, GGTR removed two underground storage tanks (USTs) and associated fuel dispenser from the site at the locations shown in Figure 2. The following table presents a summary of the tank designations, size, type of construction and contents:

Designation	Construction	Diameter (Feet)	Length (Feet)	Volume (Gallons)	Contents
TANK 1	Steel	4	7	675	Gasoline
TANK 2	Steel	4	3.5	340	Waste Oil

GGTR removed the residual fuel from the subsurface product piping (left in place), thoroughly flushed and drained the piping, and capped both ends. GGTR over-excavated the gasoline-contaminated soil surrounding the former UST location. The tank removal and over-excavation activities are documented in GGTR's *Tank Removal Report*, dated October 11, 1996.

Between May 1998 and October 1999, as requested by the ACHCSA, GGTR performed a preliminary subsurface soil boring investigation at the subject property and subsequently installed three groundwater monitor wells in the vicinity of the former UST cavity. Soil borings B1 through B3 were advanced immediately south, east, and west, respectively, of the former UST cavity. Following review and interpretation of all field and soil sample analytical data collected during these activities, additional soil borings (B4 through B6) were then advanced at the site to further assess the extent of contamination in soil and the potential impact to groundwater. These borings were converted to 2-inch-diameter groundwater monitoring wells, MW1 through MW3

In collaboration with Gettler-Ryan, Inc. of Dublin, California, which is conducting a separate groundwater investigation adjacent to the subject property (5940 College Avenue; Former Chevron Station), GGTR has jointly monitored and sampled each well on a

quarterly basis between January 2000 and April 2002. The locations of the subject monitor wells as well as Gettler-Ryan's monitoring wells are shown on Figure 2.

Based on the residual elevated concentrations of gasoline-range hydrocarbons measured in the groundwater samples collected during the April 2001 quarterly monitoring activities, the ACHCSA, in a letter dated July 9, 2001, requested a work plan to assess whether any additional contaminant sources may potentially exist onsite that may be contributing to the elevated hydrocarbon concentration in groundwater. GGTR submitted the work plan on December 19, 2001, which was subsequently approved by the ACHCSA in a letter dated January 3, 2002. In August, October, and November 2002, GGTR implemented the approved work plan activities, details of which are presented in GGTR's June 10, 2003 *Report of Additional Soil and Groundwater Investigation*.

Based on review of GGTR's June 2003 report, the ACHCSA, in their letter dated September 8, 2003 requested a work plan addressing additional source and site characterization of contaminants in soil and groundwater at the subject property. GGTR submitted their Work Plan for Additional Site Characterization on December 29, 2003, which was conditionally approved by the ACHCSA in their most recent letter dated June 3, 2004. On September 30, 2004, GGTR submitted their *Additional Site Characterization Work Plan Addendum* for review. Between October 15, 2003 and October 2005, GGTR conducted quarterly groundwater monitoring and sampling activities at the site and submitted their associated Groundwater Monitoring Reports to the ACHCSA.

The following chronological list of activities shows the significant UST removal and investigative activities performed at the site to date:

08/06/96	Underground storage tanks 1 and 2 were removed and samples recovered
08/15/96	A work plan was submitted by GGTR for over excavation and disposal of gasoline-contaminated soil surrounding the UST
09/30/96	Over-excavation of gasoline-contaminated soil performed
10/01/96	Last of additional excavation soil disposed of at a Class II facility
10/11/96	TANK REMOVAL REPORT published by GGTR
12/30/96	ACHSA submitted letter requiring soil and groundwater investigation
03/10/97	GGTR authorized to prepare a work plan for additional investigation
04/01/97	GGTR submitted work plan for a Soil and Groundwater Investigation
04/21/97	ACHSA submitted letter authorizing work plan
05/06/98	GGTR drills borings B1 through B3
05/20/98	GGTR drills borings B4 (Monitoring Well MW1)
05/27/98	GGTR develops monitoring well MW1
06/01/98	GGTR measures, purges and samples monitoring well MW1
06/17/98	GGTR submitted Soil and Groundwater Investigation Report
07/21/98	GGTR submitted Work Plan Addendum for installation of two additional groundwater monitoring wells
09/10/98	GGTR measures, purges and samples monitoring well MW1 then submits a groundwater monitoring report

10/02/99 GGTR drills two borings (B5 and B6) and converts them to groundwater monitoring Wells (MW2 and MW3)

10/04/99 GGTR develops monitoring wells MW2 and MW3

10/07/99 GGTR surveys monitoring wells MW2 / MW3; measures, purges and samples monitoring wells MW1, MW2 and MW3 then submits a groundwater monitoring report

10/22/99 GGTR submitted Summary Report

11/24/99 HCS submitted letter requiring quarterly monitoring and setting parameters for January 2000 analyses

01/26/00 GGTR measures, purges and samples monitoring wells MW1, MW2 and MW3 then submits a groundwater monitoring report

10/25/00 GGTR and Gettler-Ryan, Inc. perform joint groundwater monitoring activities; GGTR measures, purges and samples monitoring wells MW1, MW2 and MW3 then submits a groundwater monitoring report

04/25/01 GGTR and Gettler-Ryan, Inc. perform joint groundwater monitoring activities; GGTR surveys, measures and samples monitoring wells MW1, MW2 and MW3 then submits a groundwater monitoring report

07/10/01 GGTR and Gettler-Ryan, Inc. perform joint groundwater monitoring activities; GGTR measures and samples monitoring wells MW1, MW2 and MW3 then submits a groundwater monitoring report

10/08/01 GGTR and Gettler-Ryan, Inc. perform joint groundwater monitoring activities; GGTR monitors and samples MW1, MW2 and MW3.

11/28/01 GGTR submits October 2001 Groundwater Monitoring Report to the ACHCSA

12/19/01 GGTR submits Work Plan for Additional Soil & Groundwater Investigation to the ACHCSA

01/03/02 ACHCSA submits work plan implementation request letter.

01/07/02 GGTR monitors and samples MW1, MW2 and MW3.

01/13/02 Gettler-Ryan, Inc. monitors and samples GR-MW1 & GR-MW2.

02/11/02 GGTR submits January 7, 2001 Groundwater Monitoring Report to the ACHCSA

04/08/02 GGTR monitors and samples MW1, MW2 and MW3.

04/08/02 Gettler-Ryan, Inc. monitors and samples GR-MW1 & GR-MW2.

05/15/02 GGTR submits April 8, 2002 Groundwater Monitoring Report to the ACHCSA

07/09/02 GGTR monitors and samples MW1, MW2 and MW3; Gettler-Ryan, Inc. currently on bi-annual sampling basis

08/19/02 GGTR submits July 9, 2002 Groundwater Monitoring Report to the ACHCSA

08/24/02-

08/30/02 GGTR conducts December 2001 work plan subsurface fuel piping removal and site restoration activities.

10/15/02 Gettler-Ryan, Inc. monitors and samples GR-MW1 & GR-MW2.

10/23/02 GGTR monitors and samples MW1, MW2 and MW3.

10/30/02 &

11/01/02 GGTR conducts December 2001 work plan additional soil boring activities

12/30/02 GGTR submits October 23, 2002 Groundwater Monitoring Report to the ACHCSA

06/10/03 GGTR submits Report of Additional Soil and Groundwater Investigation to the ACHCSA

09/08/03 ACHCSA submits Report Review Letter

10/15/03 GGTR conducts 3rd Quarter 2003 Monitoring & Sampling (MW1-MW3)

10/31/03 GGTR submits October 15, 2003 Groundwater Monitoring Report to the ACHCSA

12/29/03 GGTR submits Work Plan for Additional Site Characterization to the ACHCSA

02/02/04 GGTR conducts 1st Quarter 2004 Monitoring & Sampling (MW1-MW3)

03/29/04 GGTR submits February 2, 2004 Groundwater Monitoring Report to the ACHCSA

04/23/04 GGTR conducts 2nd Quarter 2004 Monitoring & Sampling (MW1-MW3)

08/19/04 GGTR submits April 23, 2004 Groundwater Monitoring Report to the ACHCSA

07/19/04 GGTR conducts 3rd Quarter 2004 Monitoring and Sampling (MW1-MW3)

09/30/04 GGTR submits Additional Site Characterization Work Plan Addendum to the ACHCSA

10/22/04 GGTR conducts 4th Quarter 2004 Monitoring and Sampling (MW1-MW3)

11/11/04 GGTR submits July 19, 2004 Groundwater Monitoring Report to the ACHCSA

01/20/05 GGTR submits October 22, 2004 Groundwater Monitoring Report to the ACHCSA

01/21/05 GGTR conducts 1st Quarter 2005 Groundwater Monitoring and Sampling (MW1-MW3)

03/17/05 GGTR submits October 14 2005 Groundwater Monitoring Report to the ACHCSA

3/26/05 GGTR submits Additional Site Characterization Work Plan Addendum to the ACHCSA

04/05 GGTR conducts Additional Site Characterization Activities

04/14/05 GGTR conducts 2nd Quarter 2005 Groundwater Monitoring and Sampling (MW1-MW3, and PW1))

07/24/05 GGTR submits October 14 2005 Groundwater Monitoring Report to the ACHCSA

07/26/05 GGTR conducts 2nd Quarter 2005 Groundwater Monitoring and Sampling (MW1-MW3, and PW1))

10/31/05 GGTR submits July 2005 Groundwater Monitoring Report to the ACHCSA

10/14/05 GGTR conducts 4th Quarter 2005 Groundwater Monitoring and Sampling (MW1-MW3, and PW1)

01/13/06 GGTR conducts 1st Quarter 2006 Groundwater Monitoring and Sampling (MW1-MW3, and PW1)

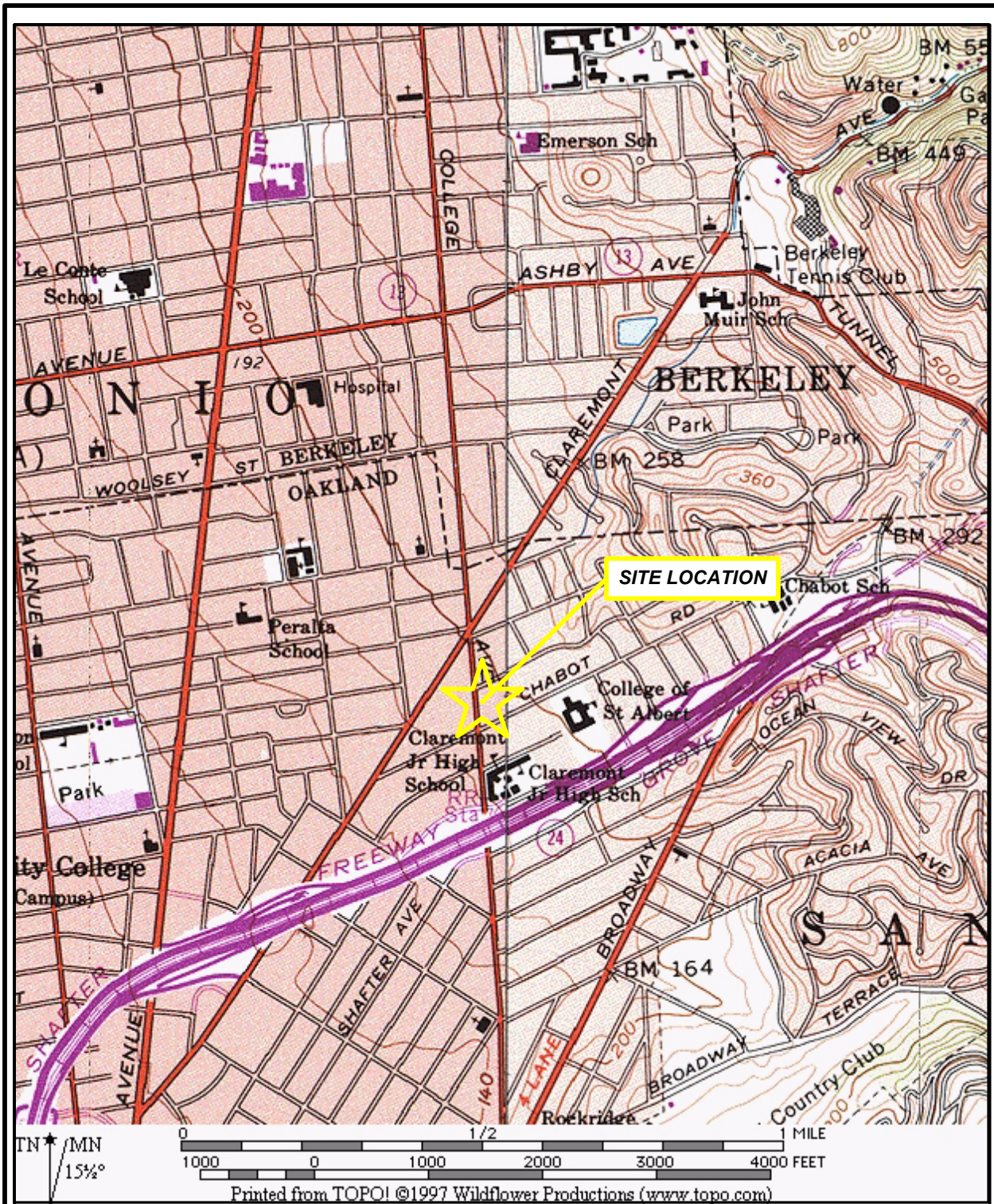
1/31/06 GGTR submits October 14 2005 Groundwater Monitoring Report to the ACHCSA

Report Distribution

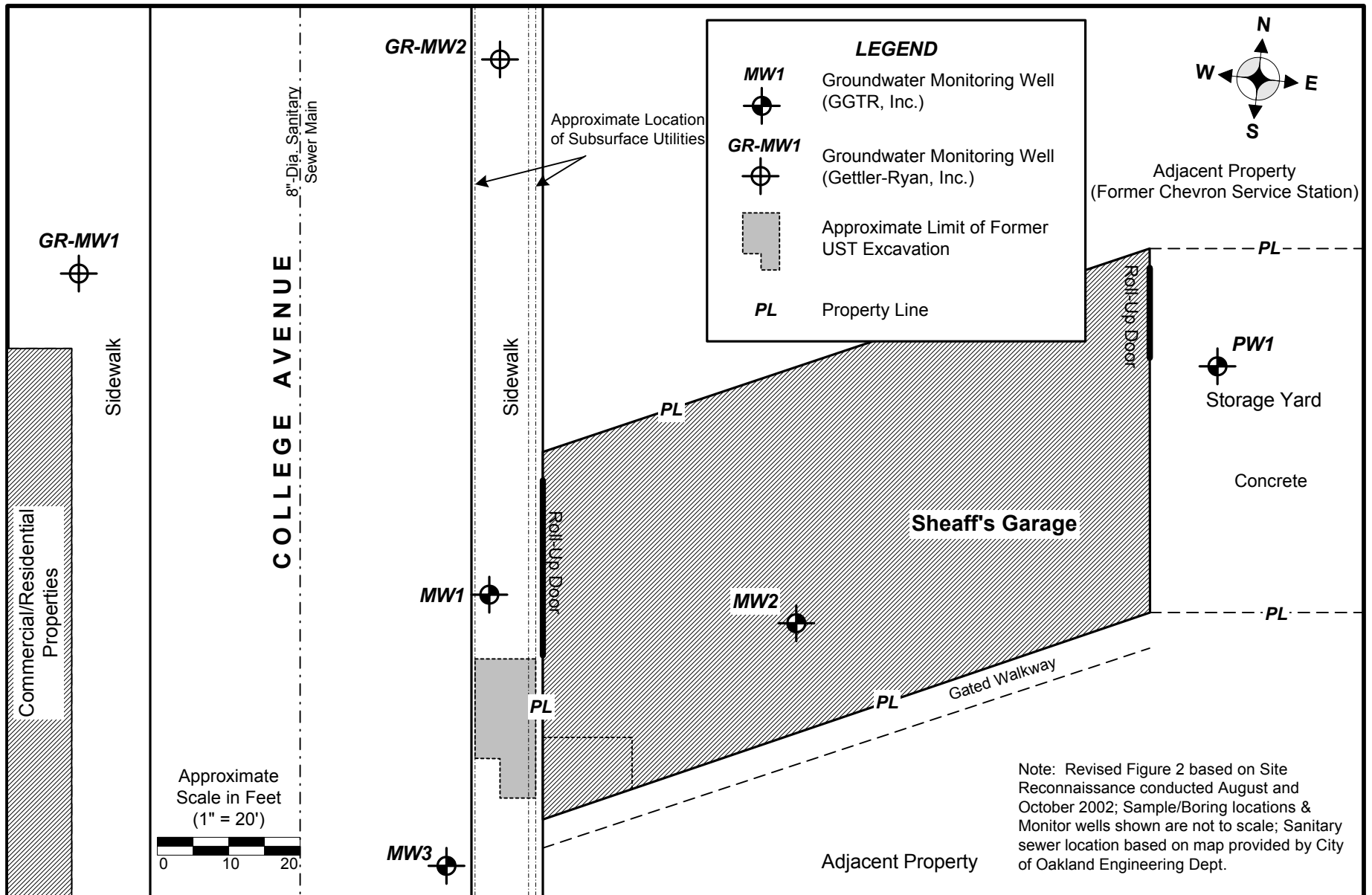
A copy of this quarterly groundwater monitoring report be submitted to the following site representatives:

Alameda County Health Care Services Agency
Environmental Health Services
Environmental Protection
1131 Harbor Bay Parkway, Suite 250
Alameda, CA 94502-6577
Attention: Mr. Don Hwang (1Electronic Copy via ACGOV)

Mr. Brian Sheaff
William G. Sheaff Trust
1945 Parkside Drive
Concord, CA 94519 (2 Copies; Bound)



<p>GOLDEN GATE TANK REMOVAL, INC. 255 Shipley Street San Francisco, California 94107 Ph (415) 512-1555 Fx (415) 512-0964</p>	<p>SITE LOCATION MAP Sheaff's Garage 5930 College Avenue Oakland, California</p>		
<p>GGTR Project No. 7335</p>	<p>Fn: 7335.sc.wp.F1</p>	<p>Revision By: baw/12.03</p>	<p>Figure 1</p>



GOLDEN GATE TANK REMOVAL
 255 Shipley Street
 San Francisco, California 94107
 Phone (415) 512-1555 Fax (415) 512-1555

SITE PLAN
Sheaff's Garage
 5930 College Avenue, Oakland, California

GGTR Project No. 7335

Fn: 7335.GWM.F2.10.03

Revision By: baw/10.03

FIGURE 2

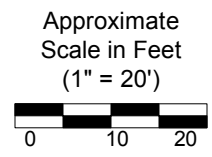
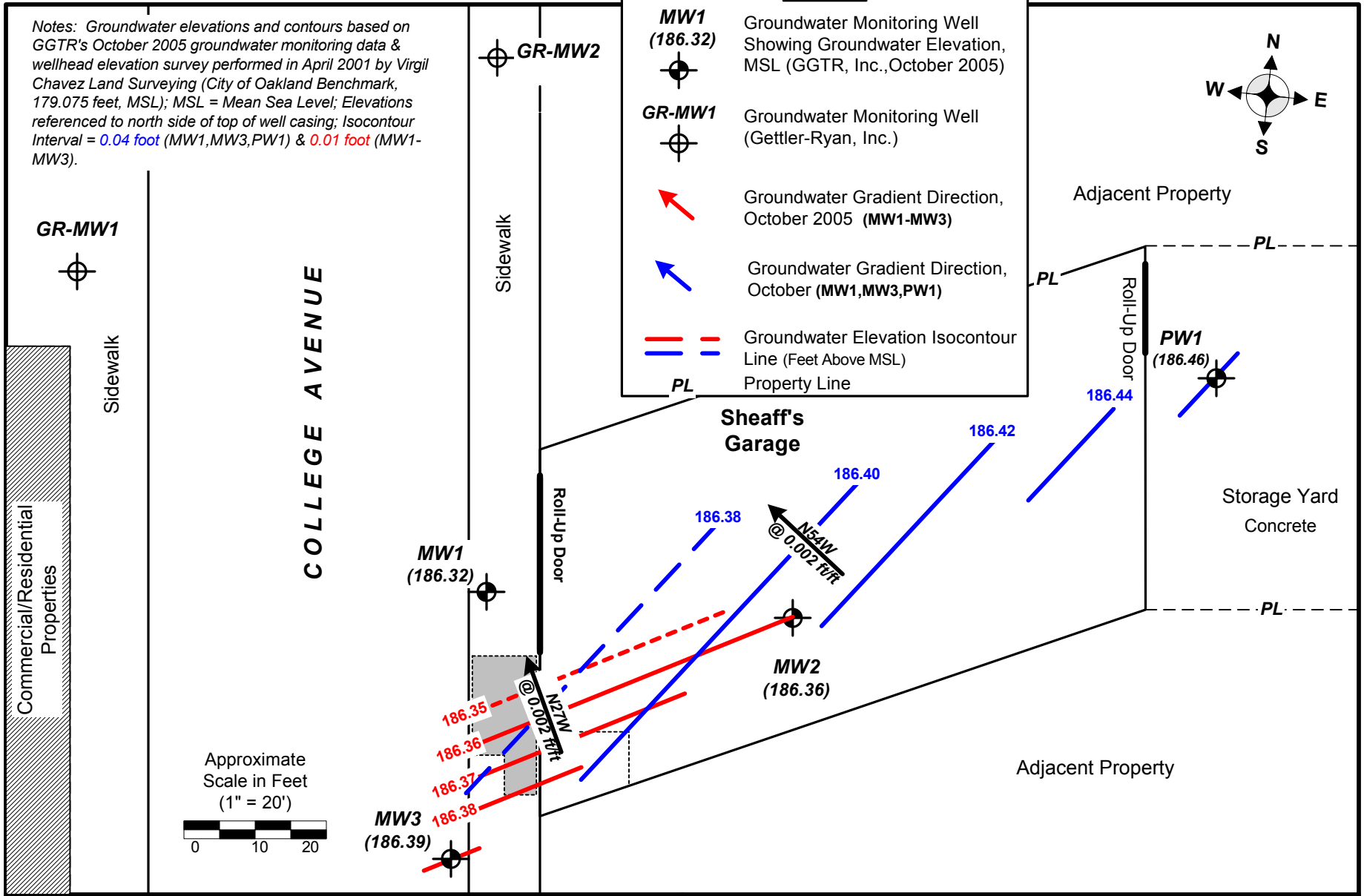
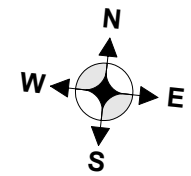
Notes: Groundwater elevations and contours based on GGTR's October 2005 groundwater monitoring data & wellhead elevation survey performed in April 2001 by Virgil Chavez Land Surveying (City of Oakland Benchmark, 179.075 feet, MSL); MSL = Mean Sea Level; Elevations referenced to north side of top of well casing; Isocontour Interval = 0.04 foot (MW1, MW3, PW1) & 0.01 foot (MW1-MW3).

LEGEND

- MW1 (186.32)**

 Groundwater Monitoring Well Showing Groundwater Elevation, MSL (GGTR, Inc., October 2005)
- GR-MW1**

 Groundwater Monitoring Well (Gettler-Ryan, Inc.)
- Groundwater Gradient Direction, October 2005 (MW1-MW3)
- Groundwater Gradient Direction, October (MW1, MW3, PW1)
- Groundwater Elevation Isocontour Line (Feet Above MSL)
- Groundwater Elevation Isocontour Line (Feet Above MSL)
- Property Line



GOLDEN GATE TANK REMOVAL, INC.
 255 Shipley Street
 San Francisco, California 94107
 Phone (415) 512-1555 Fax (415) 512-0964

GROUNDWATER ELEVATION POTENTIOMETRIC MAP
 Sheaff's Garage
 5930 College Avenue, Oakland, California

GGTR Project No. 7335

Fn: 7335.GWM.F3.

Revision By: gw/10/05

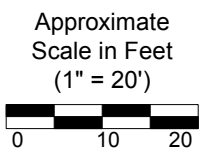
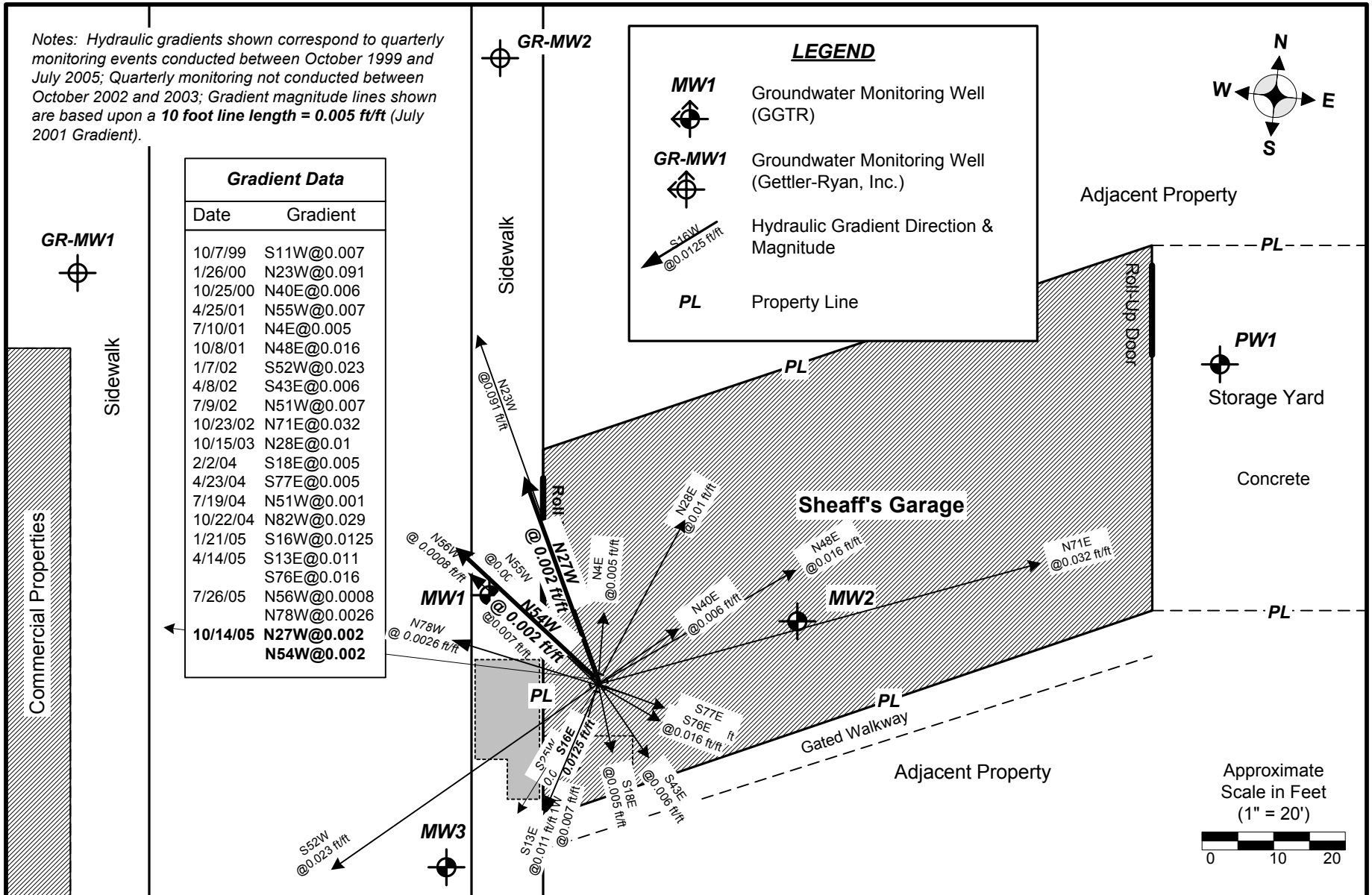
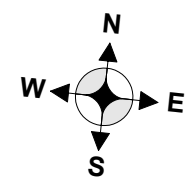
FIGURE 3

Notes: Hydraulic gradients shown correspond to quarterly monitoring events conducted between October 1999 and July 2005; Quarterly monitoring not conducted between October 2002 and 2003; Gradient magnitude lines shown are based upon a 10 foot line length = 0.005 ft/ft (July 2001 Gradient).

Gradient Data	
Date	Gradient
10/7/99	S11W@0.007
1/26/00	N23W@0.091
10/25/00	N40E@0.006
4/25/01	N55W@0.007
7/10/01	N4E@0.005
10/8/01	N48E@0.016
1/7/02	S52W@0.023
4/8/02	S43E@0.006
7/9/02	N51W@0.007
10/23/02	N71E@0.032
10/15/03	N28E@0.01
2/2/04	S18E@0.005
4/23/04	S77E@0.005
7/19/04	N51W@0.001
10/22/04	N82W@0.029
1/21/05	S16W@0.0125
4/14/05	S13E@0.011
	S76E@0.016
7/26/05	N56W@0.0008
	N78W@0.0026
	N27W@0.002
	N54W@0.002

LEGEND

- MW1 Groundwater Monitoring Well (GGTR)
- GR-MW1 Groundwater Monitoring Well (Gettler-Ryan, Inc.)
- Hydraulic Gradient Direction & Magnitude
- PL Property Line



GOLDEN GATE TANK REMOVAL, INC.
 255 Shipley Street
 San Francisco, California 94107
 Phone (415) 512-1555 Fax (415) 512-0964

ROSE DIAGRAM: HISTORICAL HYDRAULIC GRADIENT
 Sheaff's Garage
 5930 College Avenue, Oakland, California

TABLE 1
Historical Results of Groundwater Sample Analysis & Fluid-Level Data
5930 College Avenue, Oakland, CA

Well ID	Sample Date	Casing Elevation (Feet/MSL)	DTW (Feet/TOC)	Water Elevation (Feet/MSL)	Product/Odor/ Sheen	TPH-G (ug/L)	TEPH (ug/L)	Total VOCs (ug/L)	MTBE (ug/L)	B/T/E/X (ug/L)
MW1	06/01/98	50.00 ¹	4.81	45.19	slight sheen	160,000	ND	--	1,900	28,000 / 21,000 / 3,800 / 21,000
	09/10/98	50.00 ¹	7.50	42.50	odor	290,000	ND	--	440	<50 / 25,000 / 7,100 / 32,000
	10/07/99	50.00 ¹	10.04	39.96	odor	85,000	ND	--	1,100	20,000 / 13,000 / 3,800 / 17,000
	01/26/00	50.00 ¹	8.26	41.74	slight sheen	130,000	--	--	470	25,000 / 18,000 / 4,500 / 22,000
	10/25/00	50.00 ¹	10.10	39.90	odor	130,000	--	ND	1,300	23,000 / 12,000 / 3,900 / 18,000
	02/02/01	50.00 ¹	9.61	40.39	odor	128,000	--	--	780	19,000 / 11,000 / 3,800 / 18,000
	04/25/01	195.90	7.39	188.51	odor	120,000	--	--	900	21,000 / 13,000 / 390 / 18,000
	07/10/01	195.90	9.72	186.18	odor	79,000	--	--	660	15,000 / 7,800 / 3000 / 15,000
	10/08/01	195.90	10.88	185.02	sheen/odor	112,000	--	--	374	25,300 / 11,800 / 4,280 / 20,600
	01/07/02	195.90	4.34	191.56	odor	96,100	--	--	596 ³	21,100 / 13,500 / 4,160 / 21,900
	04/08/02	195.90	6.84	189.06	slight odor	111,000	--	1,040 ²	814 (679 ³)	21,200 / 13,400 / 4,230 / 21,000
	07/09/02	195.90	9.40	186.50	slight odor	110,000	--	573 ⁴	746 (570 ³)	20,300 / 13,300 / 4,060 / 19,800
	10/23/02	195.90	11.04	184.86	none	54,100	--	41,482 ⁵	1,010 (1,080 ³)	10,800 / 3,870 / 2,320 / 9,440
	10/15/03	195.90	10.80	185.10	none	90,700	--	47,837 ⁸	534 (724 ³)	17,800 / 4,740 / 3,150 / 13,900
	02/02/04	195.90	7.35	188.55	none	108,000	--	50,118 ¹²	216 (194 ³)	14,200 / 7,420 / 3,450 / 19,800
	04/23/04	195.90	6.83	189.07	slight odor	49,200	--	28,750 ¹⁵	85 (114 ³)	7,910 / 1,480 / 1,810 / 10,100
	07/19/04	195.90	8.95	186.95	odor	63,900	--	32,739 ¹⁸	373 (303 ³)	7,260 / 2,270 / 2,510 / 10,100
	10/22/04	195.90	10.15	185.75	None	80,700	--	34,550 ²¹	493 (296 ³)	13,900 / 1,670 / 3,550 / 15,200
	01/21/05	195.90	5.45	190.45	odor	278,000	--	46,142 ²⁴	271 (174 ³)	14,700 / 25,300 / 10,800 / 73,500
04/14/05	195.90	5.3	190.60	Odor / sheen	116,000	--	63,650 ²⁷	366 (410 ³)	15,100 / 7,080 / 4,220 / 20,700	
07/26/05	195.90	7.6	188.30	Odor	82,000	--	36,300 ³¹	ND	12000/4500/3300/14000	
10/14/05	195.90	9.58	186.32	Odor/sheen	64000	--	6400	ND	13000/5700/3400/16000	
Laboratory Reporting Limit						50	5,000	<50	2.0	0.5 / 0.5 / 0.5 / 1.0
CRWQCB MSWQO (MCL)						NC	NC	Varies	5 ¹¹	1 / 150 / 700 / 1,750
CRWQCB February 2005 ESL						100/100	100/640	Varies	5.0/1,800	1.0 (46) / 40 (130) / 30 (290) / 20(100)

Table Notes Following

TABLE 1 (Cont'd)
Historical Results of Groundwater Sample Analysis & Fluid-Level Data
5930 College Avenue, Oakland, CA

Well ID	Sample Date	Casing Elevation (Feet/MSL)	DTW (Feet/TOC)	Water Elevation (Feet/MSL)	Product/Odor/ Sheen	TPH-G (ug/L)	TEPH (ug/L)	Total VOCs (ug/L)	MTBE (ug/L)	B/T/E/X (ug/L)
MW2	10/07/99	51.42 ¹	11.49	39.93	slight/odor	18,000	ND	--	490	3,000 / 1,700 / 1,000 / 3,900
	01/26/00	51.42 ¹	7.85	43.57	none	42,000	--	--	560	9,300 / 2,200 / 2,300 / 7,700
	10/25/00	51.42 ¹	11.57	39.85	slight/odor	31,000	--	ND	500	5,500 / 370 / 1,700 / 2,600
	02/02/01	51.42 ¹	10.77	40.65	odor	36,000	--	--	400	4,300 / 530 / 1,800 / 4,500
	04/25/01	197.28	8.52	188.76	odor	56,000	--	--	460	6,700 / 1700 / 2,600 / 8,200
	07/10/01	197.28	11.05	186.23	odor	39,000	--	--	180	6,200 / 730 / 2,300 / 6,100
	10/08/01	197.28	12.79	184.49	sheen/odor	40,700	--	--	6,460	6,310 / 399 / 2,100 / 5,320
	01/07/02	197.28	4.92	192.36	odor	59,600	--	--	366 ³	10,300 / 3,250 / 4,180 / 14,400
	04/08/02	197.28	8.40	188.88	slight odor	66,700	--	--	583 ³	10,200 / 2,670 / 3,840 / 13,200
	07/09/02	197.28	10.55	186.73	slight odor	37,100	--	298	303 (298 ³)	5,340 / 890 / 2,110 / 6,920
	10/23/02	197.28	13.85	183.43	none	13,300	--	8,686 ⁶	322 (360 ³)	2,420 / 216 / 922 / 1,470
	10/15/03	197.28	12.38	184.90	none	11,300	--	6,642 ⁹	264 (322 ³)	2,660 / 51 / 1,180 / 1,220
	02/02/04	197.28	8.80	188.48	none	21,700	--	8,020 ¹³	168 (200 ³)	2,130 / 51 / 1,030 / 2,060
	04/23/04	197.28	8.40	188.88	Slight odor	30,400	--	13,921 ¹⁶	112 (203 ³)	3,570 / 322 / 1,620 / 4,140
	07/19/04	197.28	10.30	186.98	odor	28,300	--	10,284 ¹⁹	283 (373 ³)	2,540 / 239 / 1,320 / 2,300
	10/22/04	197.28	10.25	187.03	Moderate odor	13,500	--	4,548 ²²	273 (229 ³)	1,790 / 54 / 892 / 915
1/21/05	197.28	6.65	190.63	Moderate odor	27,8000	--	17746 ²⁵	161 (163 ³)	5980 / 1030 / 2890 / 9070	
4/14/05	197.28	8.7	188.58	None	46100	--	24398 ²⁸	155 (150 ³)	5,170 / 787 / 2,530 / 6,010	
7/26/05	197.28	8.95	188.33	Moderate odor	41,000	--	12,160 ³²	ND (ND ³)	5600/550/2600/4600	
10/14/05	197.28	10.92	186.36	Odor/sheen	13000	--	1300	130	2900/100/1300/1200	
Laboratory Reporting Limit						50	5,000	≤50	0.5 (1)	0.5 / 0.5 / 0.5 / 1.0
CRWQCB MSWQO (MCL)						NC	NC	Varies	5 ¹¹	1 / 150 / 700 / 1,750
CRWQCB February 2005 ESL						100/100	100/640	Varies	5.0/1,800	1.0 (46) / 40 (130) / 30 (290) / 20(100)

Table Notes Following

TABLE 1 (Cont'd)
Historical Results of Groundwater Sample Analysis & Fluid-Level Data
5930 College Avenue, Oakland, CA

Well ID	Sample Date	TOC Elevation (Feet/MSL)	DTW (Feet/TOC)	Water Elevation (Feet/MSL)	Product/Odor/Sheen	TPH-G (ug/L)	TEPH (ug/L)	Total VOCs (ug/L)	MTBE (ug/L)	B/T/E/X (ug/L)
MW3	10/07/99	49.39 ¹	9.67	39.72	none	6,600	ND	--	390	310 / 110 / 430 / 1,000
	01/26/00	49.39 ¹	5.40	43.99	none	3,300	--	--	40	110 / 8 / 100 / 32
	10/25/00	49.39 ¹	9.24	40.15	slight odor	4,500	--	ND	ND	100 / 2 / 120 / 130
	02/02/01	49.39 ¹	8.73	40.66	slight odor	2,900	--	--	35	35 / 3 / 160 / 298
	04/25/01	195.22	6.61	188.61	slight odor	8,400	--	--	56	260 / 33 / 290 / 510
	07/10/01	195.22	8.85	186.37	slight odor	12,000	--	--	35	39 / 10 / 690 / 1600
	10/08/01	195.22	9.75	185.47	sheen/odor	4,913	--	--	52	108 / 4 / 99 / 133
	01/07/02	195.22	4.25	190.97	sheen/odor	7,260	--	--	81.7 ³	723 / 138 / 492 / 887
	04/08/02	195.22	6.33	188.89	odor	11,700	--	--	ND ³	540 / 108 / 706 / 1,710
	07/09/02	195.22	8.56	186.66	odor	2,320	--	20 (MTBE)	28.3 (20 ³)	37.1 / 4.7 / 98.5 / 187
	10/23/02	195.22	10.02	185.20	Sheen/odor	2,830	--	865 ⁷	ND (ND ³)	46.8 / 4.7 / 43.6 / 65.5
	10/15/03	195.22	9.80	185.42	Sheen/odor	3,040	--	436 ¹⁰	ND (ND ³)	91.3 / 8.4 / 69.9 / 148
	02/02/04	195.22	6.85	188.37	Sheen/odor	5,140	--	769.5 ¹⁴	ND (ND ³)	126 / 8.7 / 134 / 238
	04/23/04	195.22	6.17	189.05	none	7,210	--	2,807.9 ¹⁷	ND (ND ³)	227 / 39.5 / 448 / 879
	07/19/04	195.22	8.25	186.97	Slight odor	9,860	--	568.2 ²⁰	ND (ND ³)	20.4 / 3.2 / 30.6 / 117
	10/22/04	195.22	9.25	185.97	None	7,420	--	1,901 ²³	96 (21 ³)	152 / 12.8 / 267 / 480
1/21/05	195.22	5.22	190.00	Slight odor	2,420	--	809.5 ²⁶	ND (ND ³)	111 / 11.4 / 139 / 265	
4/14/05	195.22	6.64	188.58	Odor / sheen	5130	--	2107 ²⁹	54 (41.4 ³)	357 / 19.4 / 287 / 510	
7/26/05	195.22	6.90	188.32	none	9,800	--	5,409 ³³	ND (21 ³)	200/23/220/360	
10/14/05	195.22	8.83	186.39	Odor/sheen	6100	--	825	ND	76/19/170/350	
Laboratory Reporting Limit						50	5,000	≤50	0.5 (1)	0.5 / 0.5 / 0.5 / 1.0
CRWQCB MSWQO (MCL)						NC	NC	Varies	5 ¹¹	1 / 150 / 700 / 1,750
CRWQCB February 2005 ESL						100/100	100/640	Varies	5.0/1,800	1.0 (46) / 40 (130) / 30 (290) / 20(100)

TABLE NOTES ON FOLLOWING PAGE

TABLE 1 (Cont'd)

**Historical Results of Groundwater Sample Analysis & Fluid-Level Data
5930 College Avenue, Oakland, CA**

Well ID	Sample Date	TOC Elevation (Feet/MSL)	DTW (Feet/TOC)	Water Elevation (Feet/MSL)	Product/Odor/Sheen	TPH-G (ug/L)	TEPH (ug/L)	Total VOCs (ug/L)	MTBE (ug/L)	B/T/E/X (ug/L)
PW1	4/14/05	197.17	6.4	190.77	none	3360	--	968 ³⁰	ND (ND ³)	62.8 / 6.7 / 79.5 / 317
	7/26/05	197.17	8.63	188.54	none	1,300	--	336.6 ³⁴	ND (ND ³)	22/ND/48/110
	10/14/05	197.17	10.71	186.46	none	4300	--	751.3	ND	93/1.2/100/140
Laboratory Reporting Limit						50	5,000	≤50	0.5 (1)	0.5 / 0.5 / 0.5 / 1.0
CRWQCB MSWQO (MCL)						NC	NC	Varies	5 ¹¹	1 / 150 / 700 / 1,750
CRWQCB February 2005 ESL						100/100	100/640	Varies	5.0/1,800	1.0 (46) / 40 (130) / 30 (290) / 20(100)

TABLE 1 NOTES: TOC - top of well casing (north side)
DTW - depth to water relative to TOC
ug/L - micrograms per liter (equivalent to parts per billion)
TPH-G - Total Petroleum Hydrocarbons as Gasoline (SW8020F)
TEPH - Total Extractable Petroleum Hydrocarbons [EPA Methods 5030/8015M & EPA 1664 (B10 Only)]
Total VOCs - Total Volatile Organic Compounds by EPA Method 8260
MTBE - Methyl Tertiary Butyl Ether (EPA Method 8260)
BTEX - Benzene / Toluene / Ethylbenzene / Total Xylenes (SW8020F)
MSL - Mean Sea Level; TB = Trip Blank (7335-TB)
ND - not detected above laboratory reporting limit
NC - no criteria established; NA – not applicable
-- - not analyzed for this constituent
fbg - feet below grade surface

TABLE NOTES CONTINUED ON FOLLOWING PAGE

TABLE 1 (Cont'd)

**Historical Results of Groundwater Sample Analysis & Fluid-Level Data
5930 College Avenue, Oakland, CA**

- ¹ - Arbitrary datum point with assumed elevation of 50 feet used prior to MSL survey on April 26, 2001
- ² - Fuel oxygenate concentrations reported as 1,2-Dichloroethane (361 ug/l) and MTBE (679 ug/l)
- ³ - Concentration confirmed by EPA Method 8260 (analysis of VOCs of Fuel Oxygenates)
- ⁴ - Fuel oxygenate concentrations reported as 1,2-Dichloroethane (3 ug/l) and MTBE (570 ug/l)
- ⁵ - VOC concentrations reported as 1,080 ug/l MTBE, 14,500 ug/l benzene, 5,370 ug/l toluene, 3,360 ug/l ethylbenzene, 13,700 ug/l total xylenes, 96 ug/l isopropylbenzene, 292 ug/l n-propylbenzene, 1,730 ug/l 1,3,5-trimethylbenzene, 500 ug/l 1,2,4-trimethylbenzene, 15 ug/l sec-butylbenzene, 61 ug/l n-butylbenzene, and 778 ug/l naphthalene
- ⁶ - VOC concentrations reported as 360 ug/l MTBE, 3,430 ug/l benzene, 319 ug/l toluene, 1,210 ug/l ethylbenzene, 1,960 ug/l total xylenes, 59 ug/l isopropylbenzene, 148 ug/l n-propylbenzene, 631 ug/l 1,3,5-trimethylbenzene, 153 ug/l 1,2,4-trimethylbenzene, 14 ug/l sec-butylbenzene, 43 ug/l n-butylbenzene, and 359 ug/l naphthalene
- ⁷ - VOC concentrations reported as 9 ug/l chloroform, 74 ug/l benzene, 9 ug/l toluene, 72 ug/l ethylbenzene, 109 ug/l total xylenes, 42 ug/l isopropylbenzene, 112 ug/l n-propylbenzene, 216 ug/l 1,3,5-trimethylbenzene, 100 ug/l 1,2,4-trimethylbenzene, 20 ug/l sec-butylbenzene, 59 ug/l n-butylbenzene, and 43 ug/l naphthalene
- ⁸ - VOC concentrations reported as 724 ug/l MTBE, 19,300 ug/l benzene, 5,070 ug/l toluene, 3,230 ug/l ethylbenzene, 15,470 ug/l total xylenes, 288 ug/l n-propylbenzene, 565 ug/l 1,3,5-trimethylbenzene, 2,150 ug/l 1,2,4-trimethylbenzene, 1,040 ug/l naphthalene, and ND<50 ug/L 1,2-dibromoethane (EDB) & ND<100 ug/L 1,2-dichloroethane (EDC)
- ⁹ - VOC concentrations reported as 322 ug/l MTBE, 2,580 ug/l benzene, 53 ug/l toluene, 1,190 ug/l ethylbenzene, 1,045 ug/l total xylenes, 75 ug/l isopropylbenzene, 210 ug/l n-propylbenzene, 140 ug/l 1,3,5-trimethylbenzene, 529 ug/l 1,2,4-trimethylbenzene, 56 ug/l n-butylbenzene, 442 ug/l naphthalene, and ND<5 ug/L 1,2-dibromoethane (EDB) & ND<10 ug/L 1,2-dichloroethane (EDC)
- ¹⁰ - VOC concentrations reported as 79 ug/l benzene, 8.3 ug/l toluene, 65 ug/l ethylbenzene, 118.6 ug/l total xylenes, 21 ug/l isopropylbenzene, 62 ug/l n-propylbenzene, 11 ug/l 1,3,5-trimethylbenzene, 30 ug/l 1,2,4-trimethylbenzene, 13 ug/l n-butylbenzene, 28 ug/l naphthalene, and ND<0.5 ug/L 1,2-dibromoethane (EDB) & ND<1 ug/L 1,2-dichloroethane (EDC)
- ¹¹ - Secondary Maximum Contaminant Level established by CRWQCB
- ¹² - VOC concentrations reported as 194 ug/l MTBE, 14,700 ug/l benzene, 7,620 ug/l toluene, 3,940 ug/l ethylbenzene, 18,710 ug/l total xylenes, 47 ug/l 4-methyl-2-pentanone, 116 ug/l isopropylbenzene, 342 ug/l n-propylbenzene, 701 ug/l 1,3,5-trimethylbenzene, 2,690 ug/l 1,2,4-trimethylbenzene, 66 ug/l n-butylbenzene, 992 ug/l naphthalene, and ND<50 ug/L 1,2-dibromoethane (EDB) & ND<100 ug/L 1,2-dichloroethane (EDC)
- ¹³ - VOC concentrations reported as 200 ug/l MTBE, 2,370 ug/l benzene, 92 ug/l toluene, 1,200 ug/l ethylbenzene, 2,024 ug/l total xylenes, 73 ug/l isopropylbenzene, 186 ug/l n-propylbenzene, 306 ug/l 1,3,5-trimethylbenzene, 1,090 ug/l 1,2,4-trimethylbenzene, 66 ug/l n-butylbenzene, 413 ug/l naphthalene, and ND<5 ug/L 1,2-dibromoethane (EDB) & ND<10 ug/L 1,2-dichloroethane (EDC)
- ¹⁴ - VOC concentrations reported as 110 ug/l benzene, 6.4 ug/l toluene, 148 ug/l ethylbenzene, 238.1 ug/l total xylenes, 23 ug/l isopropylbenzene, 83 ug/l n-propylbenzene, 22 ug/l 1,3,5-trimethylbenzene, 68 ug/l 1,2,4-trimethylbenzene, 38 ug/l n-butylbenzene, 33 ug/l naphthalene, and ND<0.5 ug/L 1,2-dibromoethane (EDB) & ND<1 ug/L 1,2-dichloroethane (EDC)
- ¹⁵ - VOC concentrations reported as 1,210 ug/l methylene chloride, 114 ug/l MTBE, 10,300 ug/l benzene, 1,960 ug/l toluene, 2,220 ug/l ethylbenzene, 10,230 ug/l total xylenes, 180 ug/l n-propylbenzene, 417 ug/l 1,3,5-trimethylbenzene, 1,560 ug/l 1,2,4-trimethylbenzene, 559 ug/l naphthalene, and ND<50 ug/L 1,2-dibromoethane (EDB) & ND<100 ug/L 1,2-dichloroethane (EDC)
- ¹⁶ - VOC concentrations reported as 203 ug/l MTBE, 4,570 ug/l benzene, 511 ug/l toluene, 1,760 ug/l ethylbenzene, 4,055 ug/l total xylenes, 215 ug/l isopropylbenzene, 469 ug/l 1,3,5-trimethylbenzene, 1,570 ug/l 1,2,4-trimethylbenzene, 568 ug/l naphthalene, and ND<5 ug/L 1,2-dibromoethane (EDB) & ND<10 ug/L 1,2-dichloroethane (EDC)

TABLE NOTES CONTINUED ON FOLLOWING PAGE

TABLE 1 (Cont'd)

Historical Results of Groundwater Sample Analysis & Fluid-Level Data

5930 College Avenue, Oakland, CA

- ¹⁷ - VOC concentrations reported as 341 ug/l benzene, 42.9 ug/l toluene, 547 ug/l ethylbenzene, 1,185 ug/l total xylenes, 29 ug/l isopropylbenzene, 82 ug/l n-propylbenzene, 60 ug/l 1,3,5-trimethylbenzene, 337 ug/l 1,2,4-trimethylbenzene, 24 ug/l n-butylbenzene, 160 ug/l naphthalene, and ND<0.5 ug/L 1,2-dibromoethane (EDB) & ND<1 ug/L 1,2-dichloroethane (EDC)
- ¹⁸ - VOC concentrations reported as 303 ug/l MTBE, 11200 ug/l benzene, 2440 ug/l toluene, and 2730 ug/l ethylbenzene 12540 ug/l total xylenes, 239 ug/l n-propylbenzene, 89 ug/l isopropylbenzene, 507 ug/l 1,3,5-trimethylbenzene, 1890 ug/l 1,2,4-trimethylbenzene, and 801 ug/l naphthalene.
- ¹⁹ - VOC concentrations reported as 373 ug/l MTBE, 3670 ug/l benzene, 207 ug/l toluene, 1450 ug/l ethylbenzene, 2403 ug/l total xylenes, 73 ug/l isopropylbenzene, 316 ug/l 1,3,5-trimethylbenzene, 1070 ug/l 1,2,4-trimethylbenzene, 475 ug/l naphthalene, 173 ug/l n-propylbenzene, 475 ug/l naphthalene, and 72 ug/l n-butylbenzene.
- ²⁰ - VOC concentrations reported as 39.3 ug/l benzene, 3.6 ug/l toluene, 31 ug/l ethylbenzene, 59.3ug/l total xylenes, 27 ug/l isopropylbenzene, 2 ug/l 1,1,2,2-tetrachloroethane, 105 ug/l n-propylbenzene, 48 ug/l 1,3,5-trimethylbenzene, 204 ug/l 1,2,4-trimethylbenzene, 34 ug/l n-butylbenzene, 16 ug/l naphthalene, and ND<0.5 ug/L 1,2-dibromoethane (EDB) & ND<1 ug/L 1,2-dichloroethane (EDC)
- ²¹ - VOC concentrations reported as 296 ug/l MTBE, 15600 ug/l benzene, 1440 ug/l toluene, 3020 ug/l ethylbenzene, 12020 ug/l total xylenes, 264 ug/l n-propylbenzene, 520 ug/l 1,3,5-trimethylbenzene, 1990 ug/l 1,2,4-trimethylbenzene, and 700 ug/l naphthalene.
- ²² - VOC concentrations reported as 229 ug/l MTBE, 2010 ug/l benzene, 54 ug/l toluene, 799 ug/l ethylbenzene, 667 ug/l total xylenes, 49 ug/l isopropylbenzene, 80 ug/l 1,3,5-trimethylbenzene, 257 ug/l 1,2,4-trimethylbenzene, 227 ug/l naphthalene, 132 ug/l n-propylbenzene, and 44 ug/l n-butylbenzene.
- ²³ - VOC concentrations reported as 21 ug/l MTBE, 128 ug/l benzene, 12 ug/l toluene, 225 ug/l ethylbenzene, 394 ug/l total xylenes, 55 ug/l isopropylbenzene, 182 ug/l n-propylbenzene, 192 ug/l 1,3,5-trimethylbenzene, 574 ug/l 1,2,4-trimethylbenzene, 42 ug/l n-butylbenzene, and 76 ug/l naphthalene
- ²⁴ VOC concentrations reported as 174 ug/l MTBE, 16600 ug/l benzene, 7130 ug/l toluene, 3580 ug/l ethylbenzene 17200 ug/l total xylenes, 271 ug/l n-propylbenzene, 525 ug/l 1,3,5-trimethylbenzene, 2080 ug/l 1,2,4-trimethylbenzene, and 662 ug/l naphthalene
- ²⁵ VOC concentrations reported as 163 ug/l MTBE, 5710 ug/l benzene, 936 ug/l toluene, 2380 ug/l ethylbenzene, 5750 ug/l total xylenes, 239 ug/l n-propylbenzene, 371 ug/l 1,3,5-trimethylbenzene, 1500 ug/l 1,2,4-trimethylbenzene, and 697 ug/l naphthalene
- ²⁶ VOC concentrations reported as 9.8 ug/l toluene, 150 ug/l ethylbenzene, 241.7 ug/l total xylenes, 25 ug/l isopropylbenzene, 88 ug/l n-propylbenzene, 23 ug/l 1,3,5-trimethylbenzene, 96 ug/l 1,2,4-trimethylbenzene, 15 ug/l n-butylbenzene, and 43 ug/l naphthalene
- ²⁷ VOC concentrations reported as 410ug/l MTBE, 19,800 ug/l benzene, 9420 ug/l toluene, 4970 ug/l ethylbenzene 26670 ug/l total xylenes, 141 ug/l isopropylbenzene, 437 ug/l n-propylbenzene, 882ug/l 1,3,5-trimethylbenzene, 3450 ug/l 1,2,4-trimethylbenzene, and 1220 ug/l naphthalene
- ²⁸ VOC concentrations reported as 150 ug/l MTBE, 8190 ug/l benzene, 9420 ug/l toluene, 3210 ug/l ethylbenzene, 6870 ug/l total xylenes, 293 ug/l n-propylbenzene, 109 ug/l isopropylbenzene, 445 ug/l 1,3,5-trimethylbenzene, 2390 ug/l 1,2,4-trimethylbenzene, and 1490 ug/l naphthalene

TABLE NOTES CONTINUED ON FOLLOWING PAGE

TABLE 1 (Cont'd)

Historical Results of Groundwater Sample Analysis & Fluid-Level Data 5930 College Avenue, Oakland, CA

²⁹ VOC concentrations reported as 27.4 ug/l toluene, 351 ug/l ethylbenzene, 41.4 ug/l MTBE, 388 ug/l benzene, 570.2 ug/l total xylenes, 45 ug/l isopropylbenzene, 148 ug/l n-propylbenzene, 85 ug/l 1,3,5-trimethylbenzene, 302 ug/l 1,2,4-trimethylbenzene, 28 ug/l n-butylbenzene, and 121 ug/l naphthalene

³⁰ VOC concentrations reported as 12 ug/l cis-1,2-Dichloroethene, 55.9 ug/l Benzene, 3.3 ug/l Trichloroethene, 9.2 ug/l Toluene, 84.9 ug/l Tetrachloroethene, 88 ug/l Ethylbenzene, 319.7 ug/l total Xylenes, 11 ug/l Isopropylbenzene, 27 ug/l n-propylbenzene, 110 ug/l 1,3,5- Trimethylbenzene, 257 ug/l 1,2,4-Trimethylbenzene, 22 ug/l n-Butylbenzene, 56 ug/l Napthalene

³¹ VOC concentrations reported as 12000 ug/l benzene, 4900 ug/l toluene, 3400 ug/l ethylbenzene 16000 ug/l total xylenes,

³² VOC concentrations reported as 5000 ug/l benzene, 560 ug/l toluene, 2300 ug/l ethylbenzene, 4300 ug/l total xylenes,

³³ VOC concentrations reported as 44 ug/l benzene 6.9 ug/l toluene, 310 ug/l total xylenes, and 120 ug/l 1,3,5-Trimethylbenzene, 60 ug/l Napthalene

³⁴ VOC concentrations reported as 24 ug/l Benzene, 1.8 ug/l Toluene, 150 ug/l Total Xylenes, 7 ug/l cis-1,2-Dichloroethene, 48 ug/l Tetrachloroethene, 7.3 ug/l Isopropylbenzene, 17 ug/l n-propylbenzene, 37 ug/l 1,3,5- Trimethylbenzene, 1.5 ug/l Trichlorofluoromethane

VOCs on Table 2 as of 10/14/05

CRWQCB MSWQO (Primary MCL) = California Regional Water Quality Control Board, Municipal Supply Water Quality Objective;
Primary Maximum Contaminant Level

CRWQCB/ESL = California Regional Water Quality Control Board's Tier 1 Environmental (Risk-Based) Screening Level; Levels shown are for **Groundwater < 10 fbg (3 meters)**, which IS / IS NOT a threatened drinking water resource.

TABLE 2**2004 -2005 Groundwater Sampling Results for VOCs****Sheaff's Garage, 5930 College Avenue, Oakland, CA**

Sample/ Well ID	Sample Date	IPB (ppb)	n-PB (ppb)	1,3,5-TMB (ppb)	1,2,4-TMB (ppb)	Sec-BB (ppb)	n-BB (ppb)	Acetone (ppb)	Napthalene (ppb)	Hexone (ppb)	TCE (ppb)	MC (ppb)	cis-1,2- DCE (ppb)	Tri- CFM (ppb)	PCE (ppb)
MW-1	02/02/04	116	342	701	2690	ND	66	ND	992	47	ND	ND	ND	ND	ND
	04/23/04	ND	ND	417	1560	ND	180	ND	559	ND	ND	1210	ND	ND	ND
	07/19/04	ND	239	507	1890	ND	ND	ND	801	ND	ND	ND	ND	ND	ND
	10/22/04	ND	264	520	1990	ND	ND	ND	700	ND	ND	ND	ND	ND	ND
	01/21/05	ND	271	525	2080	ND	ND	ND	662	ND	ND	ND	ND	ND	ND
	04/14/05	141	437	882	3450	ND	ND	ND	1220	ND	ND	ND	ND	ND	ND
	07/26/05	ND	ND	ND	ND	ND	ND	ND	ND	ND	ND	ND	ND	ND	ND
10/14/05	ND	ND	ND	2700	ND	ND	ND	ND	ND	ND	ND	ND	ND	ND	ND
MW-2	02/02/04	73	186	306	1090	ND	66	ND	413	ND	ND	ND	ND	ND	ND
	04/23/04	215	ND	469	1570	ND	ND	ND	568	ND	ND	ND	ND	ND	ND
	07/19/04	73	173	316	1070	ND	72	ND	475	ND	ND	ND	ND	ND	ND
	10/22/04	49	132	80	257	ND	132	ND	227	ND	ND	ND	ND	ND	ND
	01/21/05	ND	239	371	1500	ND	ND	ND	697	ND	ND	ND	ND	ND	ND
	04/14/05	139	293	445	2390	ND	71	ND	1490	ND	ND	ND	ND	ND	ND
	07/26/05	109	293	445	2390	ND	ND	ND	1490	ND	ND	ND	ND	ND	ND
10/14/05	ND	ND	ND	770	ND	ND	ND	ND	ND	ND	ND	ND	ND	ND	ND
CRWQCB ESL		NC	NC	NC	12/12	5/47	NC	610/ 1,500	21/24	32	5/3600	5/2200	NC	NC	5/12

NOTES: 1,2- DCA= 1,2 -Dichloroethane, IPB = Isopropylbenzene, n-PB=n-Propylbenzene, TMB= Trimethylbenzene, sec-BB= sec-Butylbenzene, n-BB =n-Butylbenzene, 1,2-EDB=1,2-Dibromoethane, Hexone=4-methyl-2-pentanone, TCE = Trichloroethene, Tri-CFM =Trichlorofluoromethane (Freon/Refrigerant) , 1,1-DCA= 1,1-Dichloroethane , MC = Methylene Chloride, cis-1,2-DCE = cis-1,2-Dichloroethene, PCE = Tetrachloroethene, ppb - parts per billion (equivalent to micrograms per liter) , ND = not detected above laboratory reporting limit, NC = No Criteria Listed

CRWQCB ESL= California Regional Water Quality Control Board's (SF Bay Region), February 2005 Tier 1 Environmental Screening Level for groundwater (< or >10fbg) that **is/is not** a current or potential source of drinking water

TABLE 2 (Continued)
Historical Groundwater Sampling Results for VOCs
Sheaff's Garage, 5930 College Avenue, Oakland, CA

Sample/ Well ID	Sample Date	IPB (ppb)	n-PB (ppb)	1,3,5-TMB (ppb)	1,2,4-TMB (ppb)	Sec-BB (ppb)	n-BB (ppb)	Acetone (ppb)	Napthalene (ppb)	Hexone (ppb)	TCE (ppb)	MC (ppb)	cis-1,2- DCE (ppb)	Tri- CFM (ppb)	PCE (ppb)
MW-3	02/02/04	23	83	22	68	ND	38	ND	33	ND	ND	ND	ND	ND	ND
	04/23/04	29	82	60	337	ND	24	ND	160	ND	ND	ND	ND	ND	1210
	07/19/04	27	105	48	204	ND	34	ND	16	ND	ND	ND	ND	ND	ND
	10/22/04	55	182	192	574	ND	42	ND	76	ND	ND	ND	ND	ND	ND
	01/21/05	25	88	23	96	ND	15	ND	43	ND	ND	ND	ND	ND	ND
	04/14/05	45	148	85	302	ND	28	ND	121	ND	ND	ND	ND	ND	ND
	07/26/05	ND	ND	120	ND	ND	ND	ND	60	ND	ND	ND	ND	ND	ND
	10/14/05	ND	ND	ND	2700	ND	ND	ND	ND	ND	ND	ND	ND	ND	ND
PW-1	07/26/05	7.3	17	37	100	ND	ND	ND	43	ND	1.5	ND	7	1.5	48
	10/14/05	28	72	67	120	12	17	ND	43	ND	4.1	ND	29	ND	25
CRWQCB ESL		NC	NC	NC	12/12	5/47	NC	610/ 1,500	21/24	32	5/3600	5/2200	NC	NC	5/12

NOTES: 1,2- DCA= 1,2 -Dichloroethane, IPB = Isopropylbenzene, n-PB=n-Propylbenzene, TMB= Trimethylbenzene, sec-BB= sec-Butylbenzene, n-BB =n-Butylbenzene, 1,2-EDB=1,2-Dibromoethane, Hexone=4-methyl-2-pentanone, TCE = Trichloroethene, Tri-CFM =Trichloroflouromethane (Freon/Refrigerant) , 1,1-DCA= 1,1-Dichloroethane , MC = Methylene Chloride, cis-1,2-DCE = cis-1,2-Dichloroethene, PCE = Tetrachloroethene, ppb - parts per billion (equivalent to micrograms per liter) , ND = not detected above laboratory reporting limit, NC = No Criteria Listed

CRWQCB ESL= California Regional Water Quality Control Board's (SF Bay Region), February 2005 Tier 1 Environmental Screening Level for groundwater (< or >10fbg) that **is/is not** a current or potential source of drinking water

APPENDIX

**LABORATORY CERTIFICATES OF ANALYSIS
CHAIN OF CUSTODY FORM
FLUID-LEVEL MONITORING DATA SHEET
WELL PURGING/SAMPLING DATA SHEETS
GEOTRACKER AB2886 UPLOAD CONFIRMATION FORMS**

Entech Analytical Labs, Inc.

3334 Victor Court • Santa Clara, CA 95054 • (408) 588-0200 • Fax (408) 588-0201

Brent Wheeler
Golden Gate Tank Removal
255 Shipley Street
San Francisco, CA 94107

Certificate Number: 45825

Issued: 10/21/2005

Project ID: 7335 Sheaff's Garage
Project Number: T0600102112
Project Name: 7335 Sheaff's Garage

Order / Lab Number: 45825

Global ID: T0600102112

Certificate of Analysis - Final Report

On October 17, 2005, samples were received under chain of custody for analysis.

Entech analyzes samples "as received" unless otherwise noted. The following results are included:

<u>Matrix</u>	<u>Test</u>	<u>Comments</u>
Liquid	EDF EPA 8260B EPA 624 TPH as Gasoline - GC-MS	

Entech Analytical Labs, Inc. is certified for environmental analyses by the State of California (#2346).
If you have any questions regarding this report, please call us at 408-588-0200 ext. 225.

Sincerely,



Erin Cunniffe
Laboratory Operations Manager

Entech Analytical Labs, Inc.

3334 Victor Court , Santa Clara, CA 95054

Phone: (408) 588-0200

Fax: (408) 588-0201

Golden Gate Tank Removal
255 Shipley Street
San Francisco, CA 94107
Attn: Brent Wheeler

Date Received: 10/17/2005 12:33:51 PM
Project ID: 7335 Sheaff's Garage
Project Number: T0600102112
Project Name: 7335 Sheaff's Garage
GlobalID: T0600102112

Certificate of Analysis - Data Report

Sample Collected by: client

Lab #: 45825-001 Sample ID: 7335-MW1

Matrix: Liquid Sample Date: 10/14/2005 1:29 PM

EPA 5030C	EPA 8260B	EPA 624								EPA 8260B
Parameter	Result	Qual	D/P-F	Detection Limit	Units	Prep Date	Prep Batch	Analysis Date	QC Batch	
1,1,1,2-Tetrachloroethane	ND		250	120	µg/L	N/A	N/A	10/19/2005	WM1051018B	
1,1,1-Trichloroethane	ND		250	120	µg/L	N/A	N/A	10/19/2005	WM1051018B	
1,1,2,2-Tetrachloroethane	ND		250	120	µg/L	N/A	N/A	10/19/2005	WM1051018B	
1,1,2-Trichloroethane	ND		250	120	µg/L	N/A	N/A	10/19/2005	WM1051018B	
1,1-Dichloroethane	ND		250	120	µg/L	N/A	N/A	10/19/2005	WM1051018B	
1,1-Dichloroethene	ND		250	120	µg/L	N/A	N/A	10/19/2005	WM1051018B	
1,1-Dichloropropene	ND		250	120	µg/L	N/A	N/A	10/19/2005	WM1051018B	
1,2,3-Trichlorobenzene	ND		250	1200	µg/L	N/A	N/A	10/19/2005	WM1051018B	
1,2,3-Trichloropropane	ND		250	120	µg/L	N/A	N/A	10/19/2005	WM1051018B	
1,2,4-Trichlorobenzene	ND		250	1200	µg/L	N/A	N/A	10/19/2005	WM1051018B	
1,2,4-Trimethylbenzene	2700		250	1200	µg/L	N/A	N/A	10/19/2005	WM1051018B	
1,2-Dibromo-3-Chloropropane	ND		250	1200	µg/L	N/A	N/A	10/19/2005	WM1051018B	
1,2-Dibromoethane (EDB)	ND		250	120	µg/L	N/A	N/A	10/19/2005	WM1051018B	
1,2-Dichlorobenzene	ND		250	120	µg/L	N/A	N/A	10/19/2005	WM1051018B	
1,2-Dichloroethane	ND		250	120	µg/L	N/A	N/A	10/19/2005	WM1051018B	
1,2-Dichloropropane	ND		250	120	µg/L	N/A	N/A	10/19/2005	WM1051018B	
1,3,5-Trimethylbenzene	ND		250	1200	µg/L	N/A	N/A	10/19/2005	WM1051018B	
1,3-Dichlorobenzene	ND		250	120	µg/L	N/A	N/A	10/19/2005	WM1051018B	
1,3-Dichloropropane	ND		250	120	µg/L	N/A	N/A	10/19/2005	WM1051018B	
1,4-Dichlorobenzene	ND		250	120	µg/L	N/A	N/A	10/19/2005	WM1051018B	
1,4-Dioxane	ND		250	12000	µg/L	N/A	N/A	10/19/2005	WM1051018B	
2,2-Dichloropropane	ND		250	120	µg/L	N/A	N/A	10/19/2005	WM1051018B	
2-Butanone (MEK)	ND		250	5000	µg/L	N/A	N/A	10/19/2005	WM1051018B	
2-Chloroethyl-vinyl Ether	ND		250	1200	µg/L	N/A	N/A	10/19/2005	WM1051018B	
2-Chlorotoluene	ND		250	1200	µg/L	N/A	N/A	10/19/2005	WM1051018B	
2-Hexanone	ND		250	5000	µg/L	N/A	N/A	10/19/2005	WM1051018B	
4-Chlorotoluene	ND		250	1200	µg/L	N/A	N/A	10/19/2005	WM1051018B	
4-Methyl-2-Pentanone(MIBK)	ND		250	5000	µg/L	N/A	N/A	10/19/2005	WM1051018B	
Acetone	ND		250	5000	µg/L	N/A	N/A	10/19/2005	WM1051018B	
Acetonitrile	ND		250	1200	µg/L	N/A	N/A	10/19/2005	WM1051018B	
Acrolein	ND		250	1200	µg/L	N/A	N/A	10/19/2005	WM1051018B	
Acrylonitrile	ND		250	1200	µg/L	N/A	N/A	10/19/2005	WM1051018B	
Benzene	13000		250	120	µg/L	N/A	N/A	10/19/2005	WM1051018B	
Benzyl Chloride	ND		250	1200	µg/L	N/A	N/A	10/19/2005	WM1051018B	
Bromobenzene	ND		250	120	µg/L	N/A	N/A	10/19/2005	WM1051018B	
Bromochloromethane	ND		250	120	µg/L	N/A	N/A	10/19/2005	WM1051018B	
Bromodichloromethane	ND		250	120	µg/L	N/A	N/A	10/19/2005	WM1051018B	
Bromoform	ND		250	120	µg/L	N/A	N/A	10/19/2005	WM1051018B	
Bromomethane	ND		250	120	µg/L	N/A	N/A	10/19/2005	WM1051018B	
Carbon Disulfide	ND		250	120	µg/L	N/A	N/A	10/19/2005	WM1051018B	
Carbon Tetrachloride	ND		250	120	µg/L	N/A	N/A	10/19/2005	WM1051018B	
Chlorobenzene	ND		250	120	µg/L	N/A	N/A	10/19/2005	WM1051018B	
Chloroethane	ND		250	120	µg/L	N/A	N/A	10/19/2005	WM1051018B	
Chloroform	ND		250	120	µg/L	N/A	N/A	10/19/2005	WM1051018B	

Detection Limit = Detection Limit for Reporting.

ND = Not Detected at or above the Detection Limit.

D/P-F = Dilution and/or Prep Factor includes sample volume adjustments.

Qual = Data Qualifier

10/21/2005 10:08:37 AM - ECunniffc

Entech Analytical Labs, Inc.

3334 Victor Court , Santa Clara, CA 95054

Phone: (408) 588-0200

Fax: (408) 588-0201

Golden Gate Tank Removal
255 Shipley Street
San Francisco, CA 94107
Attn: Brent Wheeler

Date Received: 10/17/2005 12:33:51 PM
Project ID: 7335 Sheaff's Garage
Project Number: T0600102112
Project Name: 7335 Sheaff's Garage
GlobalID: T0600102112

Certificate of Analysis - Data Report

Sample Collected by: client

Lab #: 45825-001 Sample ID: 7335-MW1

Matrix: Liquid Sample Date: 10/14/2005 1:29 PM

EPA 5030C	EPA 8260B	EPA 624								EPA 8260B
Parameter	Result	Qual	D/P-F	Detection Limit	Units	Prep Date	Prep Batch	Analysis Date	QC Batch	
Chloromethane	ND		250	120	µg/L	N/A	N/A	10/19/2005	WM1051018B	
cis-1,2-Dichloroethene	ND		250	120	µg/L	N/A	N/A	10/19/2005	WM1051018B	
cis-1,3-Dichloropropene	ND		250	120	µg/L	N/A	N/A	10/19/2005	WM1051018B	
Cyclohexanone	ND		250	5000	µg/L	N/A	N/A	10/19/2005	WM1051018B	
Dibromochloromethane	ND		250	120	µg/L	N/A	N/A	10/19/2005	WM1051018B	
Dibromomethane	ND		250	120	µg/L	N/A	N/A	10/19/2005	WM1051018B	
Dichlorodifluoromethane	ND		250	120	µg/L	N/A	N/A	10/19/2005	WM1051018B	
Diisopropyl Ether	ND		250	1200	µg/L	N/A	N/A	10/19/2005	WM1051018B	
Ethyl Benzene	3400		250	120	µg/L	N/A	N/A	10/19/2005	WM1051018B	
Freon 113	ND		250	1200	µg/L	N/A	N/A	10/19/2005	WM1051018B	
Hexachlorobutadiene	ND		250	1200	µg/L	N/A	N/A	10/19/2005	WM1051018B	
Iodomethane	ND		250	250	µg/L	N/A	N/A	10/19/2005	WM1051018B	
Isopropanol	ND		250	5000	µg/L	N/A	N/A	10/19/2005	WM1051018B	
Isopropylbenzene	ND		250	250	µg/L	N/A	N/A	10/19/2005	WM1051018B	
Methyl-t-butyl Ether	ND		250	250	µg/L	N/A	N/A	10/19/2005	WM1051018B	
Methylene Chloride	ND		250	5000	µg/L	N/A	N/A	10/19/2005	WM1051018B	
n-Butylbenzene	ND		250	1200	µg/L	N/A	N/A	10/19/2005	WM1051018B	
n-Propylbenzene	ND		250	1200	µg/L	N/A	N/A	10/19/2005	WM1051018B	
Naphthalene	ND		250	1200	µg/L	N/A	N/A	10/19/2005	WM1051018B	
p-Isopropyltoluene	ND		250	1200	µg/L	N/A	N/A	10/19/2005	WM1051018B	
Pentachloroethane	ND		250	120	µg/L	N/A	N/A	10/19/2005	WM1051018B	
sec-Butylbenzene	ND		250	1200	µg/L	N/A	N/A	10/19/2005	WM1051018B	
Styrene	ND		250	120	µg/L	N/A	N/A	10/19/2005	WM1051018B	
tert-Amyl Methyl Ether	ND		250	1200	µg/L	N/A	N/A	10/19/2005	WM1051018B	
tert-Butanol (TBA)	ND		250	2500	µg/L	N/A	N/A	10/19/2005	WM1051018B	
tert-Butyl Ethyl Ether	ND		250	1200	µg/L	N/A	N/A	10/19/2005	WM1051018B	
tert-Butylbenzene	ND		250	1200	µg/L	N/A	N/A	10/19/2005	WM1051018B	
Tetrachloroethene	ND		250	120	µg/L	N/A	N/A	10/19/2005	WM1051018B	
Tetrahydrofuran	ND		250	5000	µg/L	N/A	N/A	10/19/2005	WM1051018B	
Toluene	5700		250	120	µg/L	N/A	N/A	10/19/2005	WM1051018B	
trans-1,2-Dichloroethene	ND		250	120	µg/L	N/A	N/A	10/19/2005	WM1051018B	
trans-1,3-Dichloropropene	ND		250	120	µg/L	N/A	N/A	10/19/2005	WM1051018B	
trans-1,4-Dichloro-2-butene	ND		250	250	µg/L	N/A	N/A	10/19/2005	WM1051018B	
Trichloroethene	ND		250	120	µg/L	N/A	N/A	10/19/2005	WM1051018B	
Trichlorofluoromethane	ND		250	120	µg/L	N/A	N/A	10/19/2005	WM1051018B	
Vinyl Acetate	ND		250	1200	µg/L	N/A	N/A	10/19/2005	WM1051018B	
Vinyl Chloride	ND		250	120	µg/L	N/A	N/A	10/19/2005	WM1051018B	
Xylenes, Total	16000		250	120	µg/L	N/A	N/A	10/19/2005	WM1051018B	

Surrogate	Surrogate Recovery	Control Limits (%)
4-Bromofluorobenzene	90.6	70 - 130
Dibromofluoromethane	113	70 - 130
Toluene-d8	101	70 - 130

Analyzed by: XBian

Reviewed by: MaiChiTu

Detection Limit = Detection Limit for Reporting.

ND = Not Detected at or above the Detection Limit.

D/P-F = Dilution and/or Prep Factor includes sample volume adjustments.

Qual = Data Qualifier

10/21/2005 10:08:37 AM - ECumiff

Entech Analytical Labs, Inc.

3334 Victor Court , Santa Clara, CA 95054

Phone: (408) 588-0200

Fax: (408) 588-0201

Golden Gate Tank Removal
255 Shipley Street
San Francisco, CA 94107
Attn: Brent Wheeler

Date Received: 10/17/2005 12:33:51 PM
Project ID: 7335 Sheaff's Garage
Project Number: T0600102112
Project Name: 7335 Sheaff's Garage
GlobalID: T0600102112

Certificate of Analysis - Data Report

Sample Collected by: client

Lab #: 45825-001

Sample ID: 7335-MW1

Matrix: Liquid Sample Date: 10/14/2005 1:29 PM

EPA 5030C GC-MS

TPH as Gasoline - GC-MS

Parameter	Result	Qual	D/P-F	Detection Limit	Units	Prep Date	Prep Batch	Analysis Date	QC Batch
TPH as Gasoline	64000		250	6200	µg/L	N/A	N/A	10/19/2005	WM1051018B

Surrogate	Surrogate Recovery	Control Limits (%)
4-Bromofluorobenzene	102	70 - 130
Dibromofluoromethane	104	70 - 130
Toluene-d8	94.8	70 - 130

Analyzed by: XBian

Reviewed by: MaiChiTu

Entech Analytical Labs, Inc.

3334 Victor Court , Santa Clara, CA 95054

Phone: (408) 588-0200

Fax: (408) 588-0201

Golden Gate Tank Removal
255 Shipley Street
San Francisco, CA 94107
Attn: Brent Wheeler

Date Received: 10/17/2005 12:33:51 PM
Project ID: 7335 Sheaff's Garage
Project Number: T0600102112
Project Name: 7335 Sheaff's Garage
GlobalID: T0600102112

Certificate of Analysis - Data Report

Sample Collected by: client

Lab #: 45825-002 Sample ID: 7335-MW2

Matrix: Liquid Sample Date: 10/14/2005 1:44 PM

EPA 5030C	EPA 8260B	EPA 624								EPA 8260B
Parameter	Result	Qual	D/P-F	Detection Limit	Units	Prep Date	Prep Batch	Analysis Date	QC Batch	
1,1,1,2-Tetrachloroethane	ND		100	50	µg/L	N/A	N/A	10/19/2005	WM1051019	
1,1,1-Trichloroethane	ND		100	50	µg/L	N/A	N/A	10/19/2005	WM1051019	
1,1,2,2-Tetrachloroethane	ND		100	50	µg/L	N/A	N/A	10/19/2005	WM1051019	
1,1,2-Trichloroethane	ND		100	50	µg/L	N/A	N/A	10/19/2005	WM1051019	
1,1-Dichloroethane	ND		100	50	µg/L	N/A	N/A	10/19/2005	WM1051019	
1,1-Dichloroethene	ND		100	50	µg/L	N/A	N/A	10/19/2005	WM1051019	
1,1-Dichloropropene	ND		100	50	µg/L	N/A	N/A	10/19/2005	WM1051019	
1,2,3-Trichlorobenzene	ND		100	500	µg/L	N/A	N/A	10/19/2005	WM1051019	
1,2,3-Trichloropropane	ND		100	50	µg/L	N/A	N/A	10/19/2005	WM1051019	
1,2,4-Trichlorobenzene	ND		100	500	µg/L	N/A	N/A	10/19/2005	WM1051019	
1,2,4-Trimethylbenzene	770		100	500	µg/L	N/A	N/A	10/19/2005	WM1051019	
1,2-Dibromo-3-Chloropropane	ND		100	500	µg/L	N/A	N/A	10/19/2005	WM1051019	
1,2-Dibromoethane (EDB)	ND		100	50	µg/L	N/A	N/A	10/19/2005	WM1051019	
1,2-Dichlorobenzene	ND		100	50	µg/L	N/A	N/A	10/19/2005	WM1051019	
1,2-Dichloroethane	ND		100	50	µg/L	N/A	N/A	10/19/2005	WM1051019	
1,2-Dichloropropane	ND		100	50	µg/L	N/A	N/A	10/19/2005	WM1051019	
1,3,5-Trimethylbenzene	ND		100	500	µg/L	N/A	N/A	10/19/2005	WM1051019	
1,3-Dichlorobenzene	ND		100	50	µg/L	N/A	N/A	10/19/2005	WM1051019	
1,3-Dichloropropane	ND		100	50	µg/L	N/A	N/A	10/19/2005	WM1051019	
1,4-Dichlorobenzene	ND		100	50	µg/L	N/A	N/A	10/19/2005	WM1051019	
1,4-Dioxane	ND		100	5000	µg/L	N/A	N/A	10/19/2005	WM1051019	
2,2-Dichloropropane	ND		100	50	µg/L	N/A	N/A	10/19/2005	WM1051019	
2-Butanone (MEK)	ND		100	2000	µg/L	N/A	N/A	10/19/2005	WM1051019	
2-Chloroethyl-vinyl Ether	ND		100	500	µg/L	N/A	N/A	10/19/2005	WM1051019	
2-Chlorotoluene	ND		100	500	µg/L	N/A	N/A	10/19/2005	WM1051019	
2-Hexanone	ND		100	2000	µg/L	N/A	N/A	10/19/2005	WM1051019	
4-Chlorotoluene	ND		100	500	µg/L	N/A	N/A	10/19/2005	WM1051019	
4-Methyl-2-Pentanone(MIBK)	ND		100	2000	µg/L	N/A	N/A	10/19/2005	WM1051019	
Acetone	ND		100	2000	µg/L	N/A	N/A	10/19/2005	WM1051019	
Acetonitrile	ND		100	500	µg/L	N/A	N/A	10/19/2005	WM1051019	
Acrolein	ND		100	500	µg/L	N/A	N/A	10/19/2005	WM1051019	
Acrylonitrile	ND		100	500	µg/L	N/A	N/A	10/19/2005	WM1051019	
Benzene	2900		100	50	µg/L	N/A	N/A	10/19/2005	WM1051019	
Benzyl Chloride	ND		100	500	µg/L	N/A	N/A	10/19/2005	WM1051019	
Bromobenzene	ND		100	50	µg/L	N/A	N/A	10/19/2005	WM1051019	
Bromochloromethane	ND		100	50	µg/L	N/A	N/A	10/19/2005	WM1051019	
Bromodichloromethane	ND		100	50	µg/L	N/A	N/A	10/19/2005	WM1051019	
Bromoform	ND		100	50	µg/L	N/A	N/A	10/19/2005	WM1051019	
Bromomethane	ND		100	50	µg/L	N/A	N/A	10/19/2005	WM1051019	
Carbon Disulfide	ND		100	50	µg/L	N/A	N/A	10/19/2005	WM1051019	
Carbon Tetrachloride	ND		100	50	µg/L	N/A	N/A	10/19/2005	WM1051019	
Chlorobenzene	ND		100	50	µg/L	N/A	N/A	10/19/2005	WM1051019	
Chloroethane	ND		100	50	µg/L	N/A	N/A	10/19/2005	WM1051019	
Chloroform	ND		100	50	µg/L	N/A	N/A	10/19/2005	WM1051019	

Detection Limit = Detection Limit for Reporting.

D/P-F = Dilution and/or Prep Factor includes sample volume adjustments.

ND = Not Detected at or above the Detection Limit.

Qual = Data Qualifier

10/21/2005 10:08:37 AM - ECunniff

Entech Analytical Labs, Inc.

3334 Victor Court , Santa Clara, CA 95054

Phone: (408) 588-0200

Fax: (408) 588-0201

Golden Gate Tank Removal
255 Shipley Street
San Francisco, CA 94107
Attn: Brent Wheeler

Date Received: 10/17/2005 12:33:51 PM
Project ID: 7335 Sheaff's Garage
Project Number: T0600102112
Project Name: 7335 Sheaff's Garage
GlobalID: T0600102112

Certificate of Analysis - Data Report

Sample Collected by: client

Lab #: 45825-002 Sample ID: 7335-MW2

Matrix: Liquid Sample Date: 10/14/2005 1:44 PM

EPA 5030C	EPA 8260B	EPA 624							EPA 8260B
Parameter	Result	Qual	D/P-F	Detection Limit	Units	Prep Date	Prep Batch	Analysis Date	QC Batch
Chloromethane	ND		100	50	µg/L	N/A	N/A	10/19/2005	WM1051019
cis-1,2-Dichloroethene	ND		100	50	µg/L	N/A	N/A	10/19/2005	WM1051019
cis-1,3-Dichloropropene	ND		100	50	µg/L	N/A	N/A	10/19/2005	WM1051019
Cyclohexanone	ND		100	2000	µg/L	N/A	N/A	10/19/2005	WM1051019
Dibromochloromethane	ND		100	50	µg/L	N/A	N/A	10/19/2005	WM1051019
Dibromomethane	ND		100	50	µg/L	N/A	N/A	10/19/2005	WM1051019
Dichlorodifluoromethane	ND		100	50	µg/L	N/A	N/A	10/19/2005	WM1051019
Diisopropyl Ether	ND		100	500	µg/L	N/A	N/A	10/19/2005	WM1051019
Ethyl Benzene	1300		100	50	µg/L	N/A	N/A	10/19/2005	WM1051019
Freon 113	ND		100	500	µg/L	N/A	N/A	10/19/2005	WM1051019
Hexachlorobutadiene	ND		100	500	µg/L	N/A	N/A	10/19/2005	WM1051019
Iodomethane	ND		100	100	µg/L	N/A	N/A	10/19/2005	WM1051019
Isopropanol	ND		100	2000	µg/L	N/A	N/A	10/19/2005	WM1051019
Isopropylbenzene	ND		100	100	µg/L	N/A	N/A	10/19/2005	WM1051019
Methyl-t-butyl Ether	130		100	100	µg/L	N/A	N/A	10/19/2005	WM1051019
Methylene Chloride	ND		100	2000	µg/L	N/A	N/A	10/19/2005	WM1051019
n-Butylbenzene	ND		100	500	µg/L	N/A	N/A	10/19/2005	WM1051019
n-Propylbenzene	ND		100	500	µg/L	N/A	N/A	10/19/2005	WM1051019
Naphthalene	ND		100	500	µg/L	N/A	N/A	10/19/2005	WM1051019
p-Isopropyltoluene	ND		100	500	µg/L	N/A	N/A	10/19/2005	WM1051019
Pentachloroethane	ND		100	50	µg/L	N/A	N/A	10/19/2005	WM1051019
sec-Butylbenzene	ND		100	500	µg/L	N/A	N/A	10/19/2005	WM1051019
Styrene	ND		100	50	µg/L	N/A	N/A	10/19/2005	WM1051019
tert-Amyl Methyl Ether	ND		100	500	µg/L	N/A	N/A	10/19/2005	WM1051019
tert-Butanol (TBA)	ND		100	1000	µg/L	N/A	N/A	10/19/2005	WM1051019
tert-Butyl Ethyl Ether	ND		100	500	µg/L	N/A	N/A	10/19/2005	WM1051019
tert-Butylbenzene	ND		100	500	µg/L	N/A	N/A	10/19/2005	WM1051019
Tetrachloroethene	ND		100	50	µg/L	N/A	N/A	10/19/2005	WM1051019
Tetrahydrofuran	ND		100	2000	µg/L	N/A	N/A	10/19/2005	WM1051019
Toluene	100		100	50	µg/L	N/A	N/A	10/19/2005	WM1051019
trans-1,2-Dichloroethene	ND		100	50	µg/L	N/A	N/A	10/19/2005	WM1051019
trans-1,3-Dichloropropene	ND		100	50	µg/L	N/A	N/A	10/19/2005	WM1051019
trans-1,4-Dichloro-2-butene	ND		100	100	µg/L	N/A	N/A	10/19/2005	WM1051019
Trichloroethene	ND		100	50	µg/L	N/A	N/A	10/19/2005	WM1051019
Trichlorofluoromethane	ND		100	50	µg/L	N/A	N/A	10/19/2005	WM1051019
Vinyl Acetate	ND		100	500	µg/L	N/A	N/A	10/19/2005	WM1051019
Vinyl Chloride	ND		100	50	µg/L	N/A	N/A	10/19/2005	WM1051019
Xylenes, Total	1200		100	50	µg/L	N/A	N/A	10/19/2005	WM1051019

Surrogate	Surrogate Recovery	Control Limits (%)
4-Bromofluorobenzene	89.2	70 - 130
Dibromofluoromethane	110	70 - 130
Toluene-d8	101	70 - 130

Analyzed by: XBian

Reviewed by: MaiChiTu

Detection Limit = Detection Limit for Reporting.

D/P-F = Dilution and/or Prep Factor includes sample volume adjustments.

ND = Not Detected at or above the Detection Limit.

Qual = Data Qualifier

10/21/2005 10:08:37 AM - ECunniffe

Entech Analytical Labs, Inc.

3334 Victor Court , Santa Clara, CA 95054

Phone: (408) 588-0200

Fax: (408) 588-0201

Golden Gate Tank Removal
255 Shipley Street
San Francisco, CA 94107
Attn: Brent Wheeler

Date Received: 10/17/2005 12:33:51 PM
Project ID: 7335 Sheaff's Garage
Project Number: T0600102112
Project Name: 7335 Sheaff's Garage
GlobalID: T0600102112

Certificate of Analysis - Data Report

Sample Collected by: client

Lab #: 45825-002

Sample ID: 7335-MW2

Matrix: Liquid Sample Date: 10/14/2005 1:44 PM

EPA 5030C GC-MS

TPH as Gasoline - GC-MS

Parameter	Result	Qual	D/P-F	Detection Limit	Units	Prep Date	Prep Batch	Analysis Date	QC Batch
TPH as Gasoline	13000		100	2500	µg/L	N/A	N/A	10/19/2005	WM1051019

Surrogate	Surrogate Recovery	Control Limits (%)
4-Bromofluorobenzene	100	70 - 130
Dibromofluoromethane	100	70 - 130
Toluene-d8	95.7	70 - 130

Analyzed by: XBian

Reviewed by: MaiChiTu

Entech Analytical Labs, Inc.

3334 Victor Court , Santa Clara, CA 95054

Phone: (408) 588-0200

Fax: (408) 588-0201

Golden Gate Tank Removal
255 Shipley Street
San Francisco, CA 94107
Attn: Brent Wheeler

Date Received: 10/17/2005 12:33:51 PM
Project ID: 7335 Sheaff's Garage
Project Number: T0600102112
Project Name: 7335 Sheaff's Garage
GlobalID: T0600102112

Certificate of Analysis - Data Report

Sample Collected by: client

Lab #: 45825-003

Sample ID: 7335-MW3

Matrix: Liquid Sample Date: 10/14/2005 1:05 PM

EPA 5030C	EPA 8260B	EPA 624								EPA 8260B
Parameter	Result	Qual	D/P-F	Detection Limit	Units	Prep Date	Prep Batch	Analysis Date	QC Batch	
1,1,1,2-Tetrachloroethane	ND		20	10	µg/L	N/A	N/A	10/19/2005	WM1051019	
1,1,1-Trichloroethane	ND		20	10	µg/L	N/A	N/A	10/19/2005	WM1051019	
1,1,2,2-Tetrachloroethane	ND		20	10	µg/L	N/A	N/A	10/19/2005	WM1051019	
1,1,2-Trichloroethane	ND		20	10	µg/L	N/A	N/A	10/19/2005	WM1051019	
1,1-Dichloroethane	ND		20	10	µg/L	N/A	N/A	10/19/2005	WM1051019	
1,1-Dichloroethene	ND		20	10	µg/L	N/A	N/A	10/19/2005	WM1051019	
1,1-Dichloropropene	ND		20	10	µg/L	N/A	N/A	10/19/2005	WM1051019	
1,2,3-Trichlorobenzene	ND		20	100	µg/L	N/A	N/A	10/19/2005	WM1051019	
1,2,3-Trichloropropane	ND		20	10	µg/L	N/A	N/A	10/19/2005	WM1051019	
1,2,4-Trichlorobenzene	ND		20	100	µg/L	N/A	N/A	10/19/2005	WM1051019	
1,2,4-Trimethylbenzene	210		20	100	µg/L	N/A	N/A	10/19/2005	WM1051019	
1,2-Dibromo-3-Chloropropane	ND		20	100	µg/L	N/A	N/A	10/19/2005	WM1051019	
1,2-Dibromoethane (EDB)	ND		20	10	µg/L	N/A	N/A	10/19/2005	WM1051019	
1,2-Dichlorobenzene	ND		20	10	µg/L	N/A	N/A	10/19/2005	WM1051019	
1,2-Dichloroethane	ND		20	10	µg/L	N/A	N/A	10/19/2005	WM1051019	
1,2-Dichloropropane	ND		20	10	µg/L	N/A	N/A	10/19/2005	WM1051019	
1,3,5-Trimethylbenzene	ND		20	100	µg/L	N/A	N/A	10/19/2005	WM1051019	
1,3-Dichlorobenzene	ND		20	10	µg/L	N/A	N/A	10/19/2005	WM1051019	
1,3-Dichloropropane	ND		20	10	µg/L	N/A	N/A	10/19/2005	WM1051019	
1,4-Dichlorobenzene	ND		20	10	µg/L	N/A	N/A	10/19/2005	WM1051019	
1,4-Dioxane	ND		20	1000	µg/L	N/A	N/A	10/19/2005	WM1051019	
2,2-Dichloropropane	ND		20	10	µg/L	N/A	N/A	10/19/2005	WM1051019	
2-Butanone (MEK)	ND		20	400	µg/L	N/A	N/A	10/19/2005	WM1051019	
2-Chloroethyl-vinyl Ether	ND		20	100	µg/L	N/A	N/A	10/19/2005	WM1051019	
2-Chlorotoluene	ND		20	100	µg/L	N/A	N/A	10/19/2005	WM1051019	
2-Hexanone	ND		20	400	µg/L	N/A	N/A	10/19/2005	WM1051019	
4-Chlorotoluene	ND		20	100	µg/L	N/A	N/A	10/19/2005	WM1051019	
4-Methyl-2-Pentanone(MIBK)	ND		20	400	µg/L	N/A	N/A	10/19/2005	WM1051019	
Acetone	ND		20	400	µg/L	N/A	N/A	10/19/2005	WM1051019	
Acetonitrile	ND		20	100	µg/L	N/A	N/A	10/19/2005	WM1051019	
Acrolein	ND		20	100	µg/L	N/A	N/A	10/19/2005	WM1051019	
Acrylonitrile	ND		20	100	µg/L	N/A	N/A	10/19/2005	WM1051019	
Benzene	76		20	10	µg/L	N/A	N/A	10/19/2005	WM1051019	
Benzyl Chloride	ND		20	100	µg/L	N/A	N/A	10/19/2005	WM1051019	
Bromobenzene	ND		20	10	µg/L	N/A	N/A	10/19/2005	WM1051019	
Bromochloromethane	ND		20	10	µg/L	N/A	N/A	10/19/2005	WM1051019	
Bromodichloromethane	ND		20	10	µg/L	N/A	N/A	10/19/2005	WM1051019	
Bromoform	ND		20	10	µg/L	N/A	N/A	10/19/2005	WM1051019	
Bromomethane	ND		20	10	µg/L	N/A	N/A	10/19/2005	WM1051019	
Carbon Disulfide	ND		20	10	µg/L	N/A	N/A	10/19/2005	WM1051019	
Carbon Tetrachloride	ND		20	10	µg/L	N/A	N/A	10/19/2005	WM1051019	
Chlorobenzene	ND		20	10	µg/L	N/A	N/A	10/19/2005	WM1051019	
Chloroethane	ND		20	10	µg/L	N/A	N/A	10/19/2005	WM1051019	
Chloroform	ND		20	10	µg/L	N/A	N/A	10/19/2005	WM1051019	

Detection Limit = Detection Limit for Reporting.

ND = Not Detected at or above the Detection Limit.

D/P-F = Dilution and/or Prep Factor includes sample volume adjustments.

Qual = Data Qualifier

10/21/2005 10:08:38 AM - ECumiffc

Entech Analytical Labs, Inc.

3334 Victor Court , Santa Clara, CA 95054

Phone: (408) 588-0200

Fax: (408) 588-0201

Golden Gate Tank Removal
255 Shipley Street
San Francisco, CA 94107
Attn: Brent Wheeler

Date Received: 10/17/2005 12:33:51 PM
Project ID: 7335 Sheaff's Garage
Project Number: T0600102112
Project Name: 7335 Sheaff's Garage
GlobalID: T0600102112

Certificate of Analysis - Data Report

Sample Collected by: client

Lab #: 45825-003 Sample ID: 7335-MW3

Matrix: Liquid Sample Date: 10/14/2005 1:05 PM

EPA 5030C	EPA 8260B	EPA 624								EPA 8260B
Parameter	Result	Qual	D/P-F	Detection Limit	Units	Prep Date	Prep Batch	Analysis Date	QC Batch	
Chloromethane	ND		20	10	µg/L	N/A	N/A	10/19/2005	WM1051019	
cis-1,2-Dichloroethene	ND		20	10	µg/L	N/A	N/A	10/19/2005	WM1051019	
cis-1,3-Dichloropropene	ND		20	10	µg/L	N/A	N/A	10/19/2005	WM1051019	
Cyclohexanone	ND		20	400	µg/L	N/A	N/A	10/19/2005	WM1051019	
Dibromochloromethane	ND		20	10	µg/L	N/A	N/A	10/19/2005	WM1051019	
Dibromomethane	ND		20	10	µg/L	N/A	N/A	10/19/2005	WM1051019	
Dichlorodifluoromethane	ND		20	10	µg/L	N/A	N/A	10/19/2005	WM1051019	
Diisopropyl Ether	ND		20	100	µg/L	N/A	N/A	10/19/2005	WM1051019	
Ethyl Benzene	170		20	10	µg/L	N/A	N/A	10/19/2005	WM1051019	
Freon 113	ND		20	100	µg/L	N/A	N/A	10/19/2005	WM1051019	
Hexachlorobutadiene	ND		20	100	µg/L	N/A	N/A	10/19/2005	WM1051019	
Iodomethane	ND		20	20	µg/L	N/A	N/A	10/19/2005	WM1051019	
Isopropanol	ND		20	400	µg/L	N/A	N/A	10/19/2005	WM1051019	
Isopropylbenzene	ND		20	20	µg/L	N/A	N/A	10/19/2005	WM1051019	
Methyl-t-butyl Ether	ND		20	20	µg/L	N/A	N/A	10/19/2005	WM1051019	
Methylene Chloride	ND		20	400	µg/L	N/A	N/A	10/19/2005	WM1051019	
n-Butylbenzene	ND		20	100	µg/L	N/A	N/A	10/19/2005	WM1051019	
n-Propylbenzene	ND		20	100	µg/L	N/A	N/A	10/19/2005	WM1051019	
Naphthalene	ND		20	100	µg/L	N/A	N/A	10/19/2005	WM1051019	
p-Isopropyltoluene	ND		20	100	µg/L	N/A	N/A	10/19/2005	WM1051019	
Pentachloroethane	ND		20	10	µg/L	N/A	N/A	10/19/2005	WM1051019	
sec-Butylbenzene	ND		20	100	µg/L	N/A	N/A	10/19/2005	WM1051019	
Styrene	ND		20	10	µg/L	N/A	N/A	10/19/2005	WM1051019	
tert-Amyl Methyl Ether	ND		20	100	µg/L	N/A	N/A	10/19/2005	WM1051019	
tert-Butanol (TBA)	ND		20	200	µg/L	N/A	N/A	10/19/2005	WM1051019	
tert-Butyl Ethyl Ether	ND		20	100	µg/L	N/A	N/A	10/19/2005	WM1051019	
tert-Butylbenzene	ND		20	100	µg/L	N/A	N/A	10/19/2005	WM1051019	
Tetrachloroethene	ND		20	10	µg/L	N/A	N/A	10/19/2005	WM1051019	
Tetrahydrofuran	ND		20	400	µg/L	N/A	N/A	10/19/2005	WM1051019	
Toluene	19		20	10	µg/L	N/A	N/A	10/19/2005	WM1051019	
trans-1,2-Dichloroethene	ND		20	10	µg/L	N/A	N/A	10/19/2005	WM1051019	
trans-1,3-Dichloropropene	ND		20	10	µg/L	N/A	N/A	10/19/2005	WM1051019	
trans-1,4-Dichloro-2-butene	ND		20	20	µg/L	N/A	N/A	10/19/2005	WM1051019	
Trichloroethene	ND		20	10	µg/L	N/A	N/A	10/19/2005	WM1051019	
Trichlorofluoromethane	ND		20	10	µg/L	N/A	N/A	10/19/2005	WM1051019	
Vinyl Acetate	ND		20	100	µg/L	N/A	N/A	10/19/2005	WM1051019	
Vinyl Chloride	ND		20	10	µg/L	N/A	N/A	10/19/2005	WM1051019	
Xylenes, Total	350		20	10	µg/L	N/A	N/A	10/19/2005	WM1051019	

Surrogate	Surrogate Recovery	Control Limits (%)
4-Bromofluorobenzene	90.4	70 - 130
Dibromofluoromethane	102	70 - 130
Toluene-d8	99.7	70 - 130

Analyzed by: XBian

Reviewed by: MaiChiTu

Entech Analytical Labs, Inc.

3334 Victor Court , Santa Clara, CA 95054

Phone: (408) 588-0200

Fax: (408) 588-0201

Golden Gate Tank Removal
255 Shipley Street
San Francisco, CA 94107
Attn: Brent Wheeler

Date Received: 10/17/2005 12:33:51 PM
Project ID: 7335 Sheaff's Garage
Project Number: T0600102112
Project Name: 7335 Sheaff's Garage
GlobalID: T0600102112

Certificate of Analysis - Data Report

Sample Collected by: client

Lab #: 45825-003

Sample ID: 7335-MW3

Matrix: Liquid Sample Date: 10/14/2005 1:05 PM

EPA 5030C GC-MS

TPH as Gasoline - GC-MS

Parameter	Result	Qual	D/P-F	Detection Limit	Units	Prep Date	Prep Batch	Analysis Date	QC Batch
TPH as Gasoline	6100		20	500	µg/L	N/A	N/A	10/19/2005	WM1051019

Surrogate	Surrogate Recovery	Control Limits (%)
4-Bromofluorobenzene	102	70 - 130
Dibromofluoromethane	93.5	70 - 130
Toluene-d8	94.0	70 - 130

Analyzed by: XBian

Reviewed by: MaiChiTu

Entech Analytical Labs, Inc.

3334 Victor Court , Santa Clara, CA 95054

Phone: (408) 588-0200

Fax: (408) 588-0201

Golden Gate Tank Removal
255 Shipley Street
San Francisco, CA 94107
Attn: Brent Wheeler

Date Received: 10/17/2005 12:33:51 PM
Project ID: 7335 Sheaff's Garage
Project Number: T0600102112
Project Name: 7335 Sheaff's Garage
GlobalID: T0600102112

Certificate of Analysis - Data Report

Sample Collected by: client

Lab #: 45825-004 Sample ID: 7335-PW-1

Matrix: Liquid Sample Date: 10/14/2005 2:01 PM

EPA 5030C	EPA 8260B	EPA 624								EPA 8260B
Parameter	Result	Qual	D/P-F	Detection Limit	Units	Prep Date	Prep Batch	Analysis Date	QC Batch	
1,1,1,2-Tetrachloroethane	ND		2.0	1.0	µg/L	N/A	N/A	10/19/2005	WM1051019	
1,1,1-Trichloroethane	ND		2.0	1.0	µg/L	N/A	N/A	10/19/2005	WM1051019	
1,1,2,2-Tetrachloroethane	ND		2.0	1.0	µg/L	N/A	N/A	10/19/2005	WM1051019	
1,1,2-Trichloroethane	ND		2.0	1.0	µg/L	N/A	N/A	10/19/2005	WM1051019	
1,1-Dichloroethane	ND		2.0	1.0	µg/L	N/A	N/A	10/19/2005	WM1051019	
1,1-Dichloroethene	ND		2.0	1.0	µg/L	N/A	N/A	10/19/2005	WM1051019	
1,1-Dichloropropene	ND		2.0	1.0	µg/L	N/A	N/A	10/19/2005	WM1051019	
1,2,3-Trichlorobenzene	ND		2.0	10	µg/L	N/A	N/A	10/19/2005	WM1051019	
1,2,3-Trichloropropane	ND		2.0	1.0	µg/L	N/A	N/A	10/19/2005	WM1051019	
1,2,4-Trichlorobenzene	ND		2.0	10	µg/L	N/A	N/A	10/19/2005	WM1051019	
1,2,4-Trimethylbenzene	120		2.0	10	µg/L	N/A	N/A	10/19/2005	WM1051019	
1,2-Dibromo-3-Chloropropane	ND		2.0	10	µg/L	N/A	N/A	10/19/2005	WM1051019	
1,2-Dibromoethane (EDB)	ND		2.0	1.0	µg/L	N/A	N/A	10/19/2005	WM1051019	
1,2-Dichlorobenzene	ND		2.0	1.0	µg/L	N/A	N/A	10/19/2005	WM1051019	
1,2-Dichloroethane	ND		2.0	1.0	µg/L	N/A	N/A	10/19/2005	WM1051019	
1,2-Dichloropropane	ND		2.0	1.0	µg/L	N/A	N/A	10/19/2005	WM1051019	
1,3,5-Trimethylbenzene	67		2.0	10	µg/L	N/A	N/A	10/19/2005	WM1051019	
1,3-Dichlorobenzene	ND		2.0	1.0	µg/L	N/A	N/A	10/19/2005	WM1051019	
1,3-Dichloropropane	ND		2.0	1.0	µg/L	N/A	N/A	10/19/2005	WM1051019	
1,4-Dichlorobenzene	ND		2.0	1.0	µg/L	N/A	N/A	10/19/2005	WM1051019	
1,4-Dioxane	ND		2.0	100	µg/L	N/A	N/A	10/19/2005	WM1051019	
2,2-Dichloropropane	ND		2.0	1.0	µg/L	N/A	N/A	10/19/2005	WM1051019	
2-Butanone (MEK)	ND		2.0	40	µg/L	N/A	N/A	10/19/2005	WM1051019	
2-Chloroethyl-vinyl Ether	ND		2.0	10	µg/L	N/A	N/A	10/19/2005	WM1051019	
2-Chlorotoluene	ND		2.0	10	µg/L	N/A	N/A	10/19/2005	WM1051019	
2-Hexanone	ND		2.0	40	µg/L	N/A	N/A	10/19/2005	WM1051019	
4-Chlorotoluene	ND		2.0	10	µg/L	N/A	N/A	10/19/2005	WM1051019	
4-Methyl-2-Pentanone(MIBK)	ND		2.0	40	µg/L	N/A	N/A	10/19/2005	WM1051019	
Acetone	ND		2.0	40	µg/L	N/A	N/A	10/19/2005	WM1051019	
Acetonitrile	ND		2.0	10	µg/L	N/A	N/A	10/19/2005	WM1051019	
Acrolein	ND		2.0	10	µg/L	N/A	N/A	10/19/2005	WM1051019	
Acrylonitrile	ND		2.0	10	µg/L	N/A	N/A	10/19/2005	WM1051019	
Benzene	93		2.0	1.0	µg/L	N/A	N/A	10/19/2005	WM1051019	
Benzyl Chloride	ND		2.0	10	µg/L	N/A	N/A	10/19/2005	WM1051019	
Bromobenzene	ND		2.0	1.0	µg/L	N/A	N/A	10/19/2005	WM1051019	
Bromochloromethane	ND		2.0	1.0	µg/L	N/A	N/A	10/19/2005	WM1051019	
Bromodichloromethane	ND		2.0	1.0	µg/L	N/A	N/A	10/19/2005	WM1051019	
Bromoform	ND		2.0	1.0	µg/L	N/A	N/A	10/19/2005	WM1051019	
Bromomethane	ND		2.0	1.0	µg/L	N/A	N/A	10/19/2005	WM1051019	
Carbon Disulfide	ND		2.0	1.0	µg/L	N/A	N/A	10/19/2005	WM1051019	
Carbon Tetrachloride	ND		2.0	1.0	µg/L	N/A	N/A	10/19/2005	WM1051019	
Chlorobenzene	ND		2.0	1.0	µg/L	N/A	N/A	10/19/2005	WM1051019	
Chloroethane	ND		2.0	1.0	µg/L	N/A	N/A	10/19/2005	WM1051019	
Chloroform	ND		2.0	1.0	µg/L	N/A	N/A	10/19/2005	WM1051019	

Detection Limit = Detection Limit for Reporting.

ND = Not Detected at or above the Detection Limit.

D/P-F = Dilution and/or Prep Factor includes sample volume adjustments.

Qual = Data Qualifier

10/21/2005 10:08:38 AM - ECunniffe

Entech Analytical Labs, Inc.

3334 Victor Court , Santa Clara, CA 95054

Phone: (408) 588-0200

Fax: (408) 588-0201

Golden Gate Tank Removal
255 Shipley Street
San Francisco, CA 94107
Attn: Brent Wheeler

Date Received: 10/17/2005 12:33:51 PM
Project ID: 7335 Sheaff's Garage
Project Number: T0600102112
Project Name: 7335 Sheaff's Garage
GlobalID: T0600102112

Certificate of Analysis - Data Report

Sample Collected by: client

Lab #: 45825-004 Sample ID: 7335-PW-1

Matrix: Liquid Sample Date: 10/14/2005 2:01 PM

EPA 5030C	EPA 8260B	EPA 624								EPA 8260B
Parameter	Result	Qual	D/P-F	Detection Limit	Units	Prep Date	Prep Batch	Analysis Date	QC Batch	
Chloromethane	ND		2.0	1.0	µg/L	N/A	N/A	10/19/2005	WM1051019	
cis-1,2-Dichloroethene	29		2.0	1.0	µg/L	N/A	N/A	10/19/2005	WM1051019	
cis-1,3-Dichloropropene	ND		2.0	1.0	µg/L	N/A	N/A	10/19/2005	WM1051019	
Cyclohexanone	ND		2.0	40	µg/L	N/A	N/A	10/19/2005	WM1051019	
Dibromochloromethane	ND		2.0	1.0	µg/L	N/A	N/A	10/19/2005	WM1051019	
Dibromomethane	ND		2.0	1.0	µg/L	N/A	N/A	10/19/2005	WM1051019	
Dichlorodifluoromethane	ND		2.0	1.0	µg/L	N/A	N/A	10/19/2005	WM1051019	
Diisopropyl Ether	ND		2.0	10	µg/L	N/A	N/A	10/19/2005	WM1051019	
Ethyl Benzene	100		2.0	1.0	µg/L	N/A	N/A	10/19/2005	WM1051019	
Freon 113	ND		2.0	10	µg/L	N/A	N/A	10/19/2005	WM1051019	
Hexachlorobutadiene	ND		2.0	10	µg/L	N/A	N/A	10/19/2005	WM1051019	
Iodomethane	ND		2.0	2.0	µg/L	N/A	N/A	10/19/2005	WM1051019	
Isopropanol	ND		2.0	40	µg/L	N/A	N/A	10/19/2005	WM1051019	
Isopropylbenzene	28		2.0	2.0	µg/L	N/A	N/A	10/19/2005	WM1051019	
Methyl-t-butyl Ether	ND		2.0	2.0	µg/L	N/A	N/A	10/19/2005	WM1051019	
Methylene Chloride	ND		2.0	40	µg/L	N/A	N/A	10/19/2005	WM1051019	
n-Butylbenzene	17		2.0	10	µg/L	N/A	N/A	10/19/2005	WM1051019	
n-Propylbenzene	72		2.0	10	µg/L	N/A	N/A	10/19/2005	WM1051019	
Naphthalene	43		2.0	10	µg/L	N/A	N/A	10/19/2005	WM1051019	
p-Isopropyltoluene	ND		2.0	10	µg/L	N/A	N/A	10/19/2005	WM1051019	
Pentachloroethane	ND		2.0	1.0	µg/L	N/A	N/A	10/19/2005	WM1051019	
sec-Butylbenzene	12		2.0	10	µg/L	N/A	N/A	10/19/2005	WM1051019	
Styrene	ND		2.0	1.0	µg/L	N/A	N/A	10/19/2005	WM1051019	
tert-Amyl Methyl Ether	ND		2.0	10	µg/L	N/A	N/A	10/19/2005	WM1051019	
tert-Butanol (TBA)	ND		2.0	20	µg/L	N/A	N/A	10/19/2005	WM1051019	
tert-Butyl Ethyl Ether	ND		2.0	10	µg/L	N/A	N/A	10/19/2005	WM1051019	
tert-Butylbenzene	ND		2.0	10	µg/L	N/A	N/A	10/19/2005	WM1051019	
Tetrachloroethene	25		2.0	1.0	µg/L	N/A	N/A	10/19/2005	WM1051019	
Tetrahydrofuran	ND		2.0	40	µg/L	N/A	N/A	10/19/2005	WM1051019	
Toluene	1.2		2.0	1.0	µg/L	N/A	N/A	10/19/2005	WM1051019	
trans-1,2-Dichloroethene	ND		2.0	1.0	µg/L	N/A	N/A	10/19/2005	WM1051019	
trans-1,3-Dichloropropene	ND		2.0	1.0	µg/L	N/A	N/A	10/19/2005	WM1051019	
trans-1,4-Dichloro-2-butene	ND		2.0	2.0	µg/L	N/A	N/A	10/19/2005	WM1051019	
Trichloroethene	4.1		2.0	1.0	µg/L	N/A	N/A	10/19/2005	WM1051019	
Trichlorofluoromethane	ND		2.0	1.0	µg/L	N/A	N/A	10/19/2005	WM1051019	
Vinyl Acetate	ND		2.0	10	µg/L	N/A	N/A	10/19/2005	WM1051019	
Vinyl Chloride	ND		2.0	1.0	µg/L	N/A	N/A	10/19/2005	WM1051019	
Xylenes, Total	140		2.0	1.0	µg/L	N/A	N/A	10/19/2005	WM1051019	

Surrogate	Surrogate Recovery	Control Limits (%)
4-Bromofluorobenzene	83.7	70 - 130
Dibromofluoromethane	109	70 - 130
Toluene-d8	91.8	70 - 130

Analyzed by: XBian

Reviewed by: MaiChiTu

Detection Limit = Detection Limit for Reporting.

ND = Not Detected at or above the Detection Limit.

D/P-F = Dilution and/or Prep Factor includes sample volume adjustments.

Qual = Data Qualifier

10/21/2005 10:08:38 AM - ECumiffe

Entech Analytical Labs, Inc.

3334 Victor Court , Santa Clara, CA 95054

Phone: (408) 588-0200

Fax: (408) 588-0201

Golden Gate Tank Removal
255 Shipley Street
San Francisco, CA 94107
Attn: Brent Wheeler

Date Received: 10/17/2005 12:33:51 PM
Project ID: 7335 Sheaff's Garage
Project Number: T0600102112
Project Name: 7335 Sheaff's Garage
GlobalID: T0600102112

Certificate of Analysis - Data Report

Sample Collected by: client

Lab #: 45825-004

Sample ID: 7335-PW-1

Matrix: Liquid Sample Date: 10/14/2005 2:01 PM

EPA 5030C GC-MS

TPH as Gasoline - GC-MS

Parameter	Result	Qual	D/P-F	Detection Limit	Units	Prep Date	Prep Batch	Analysis Date	QC Batch
TPH as Gasoline	4300		20	500	µg/L	N/A	N/A	10/20/2005	WM1051019

Surrogate	Surrogate Recovery	Control Limits (%)	
4-Bromofluorobenzene	104	70	- 130
Dibromofluoromethane	101	70	- 130
Toluene-d8	96.1	70	- 130

Analyzed by: XBian

Reviewed by: MaiChiTu

Entech Analytical Labs, Inc.

3334 Victor Court , Santa Clara, CA 95054 Phone: (408) 588-0200 Fax: (408) 588-0201

Method Blank - Liquid - EPA 8260B - EPA 8260B

QC Batch ID: WM1051018B

Validated by: MaiChiTu - 10/19/05

QC Batch Analysis Date: 10/18/2005

Parameter	Result	DF	PQLR	Units
1,1,1,2-Tetrachloroethane	ND	1	0.50	µg/L
1,1,1-Trichloroethane	ND	1	0.50	µg/L
1,1,2,2-Tetrachloroethane	ND	1	0.50	µg/L
1,1,2-Trichloroethane	ND	1	0.50	µg/L
1,1-Dichloroethane	ND	1	0.50	µg/L
1,1-Dichloroethene	ND	1	0.50	µg/L
1,1-Dichloropropene	ND	1	0.50	µg/L
1,2,3-Trichlorobenzene	ND	1	5.0	µg/L
1,2,3-Trichloropropane	ND	1	0.50	µg/L
1,2,4-Trichlorobenzene	ND	1	5.0	µg/L
1,2,4-Trimethylbenzene	ND	1	5.0	µg/L
1,2-Dibromo-3-Chloropropane	ND	1	5.0	µg/L
1,2-Dibromoethane (EDB)	ND	1	0.50	µg/L
1,2-Dichlorobenzene	ND	1	0.50	µg/L
1,2-Dichloroethane	ND	1	0.50	µg/L
1,2-Dichloropropane	ND	1	0.50	µg/L
1,3,5-Trimethylbenzene	ND	1	5.0	µg/L
1,3-Dichlorobenzene	ND	1	0.50	µg/L
1,3-Dichloropropane	ND	1	0.50	µg/L
1,4-Dichlorobenzene	ND	1	0.50	µg/L
1,4-Dioxane	ND	1	50	µg/L
2,2-Dichloropropane	ND	1	0.50	µg/L
2-Butanone (MEK)	ND	1	20	µg/L
2-Chloroethyl-vinyl Ether	ND	1	5.0	µg/L
2-Chlorotoluene	ND	1	5.0	µg/L
2-Hexanone	ND	1	20	µg/L
4-Chlorotoluene	ND	1	5.0	µg/L
4-Methyl-2-Pentanone(MIBK)	ND	1	20	µg/L
Acetone	ND	1	20	µg/L
Acetonitrile	ND	1	5.0	µg/L
Acrolein	ND	1	5.0	µg/L
Acrylonitrile	ND	1	5.0	µg/L
Benzene	ND	1	0.50	µg/L
Benzyl Chloride	ND	1	5.0	µg/L
Bromobenzene	ND	1	0.50	µg/L
Bromochloromethane	ND	1	0.50	µg/L
Bromodichloromethane	ND	1	0.50	µg/L
Bromoform	ND	1	0.50	µg/L
Bromomethane	ND	1	0.50	µg/L
Carbon Disulfide	ND	1	0.50	µg/L
Carbon Tetrachloride	ND	1	0.50	µg/L
Chlorobenzene	ND	1	0.50	µg/L
Chloroethane	ND	1	0.50	µg/L
Chloroform	ND	1	0.50	µg/L
Chloromethane	ND	1	0.50	µg/L
cis-1,2-Dichloroethene	ND	1	0.50	µg/L
cis-1,3-Dichloropropene	ND	1	0.50	µg/L
Cyclohexanone	ND	1	20	µg/L

Entech Analytical Labs, Inc.

3334 Victor Court , Santa Clara, CA 95054

Phone: (408) 588-0200

Fax: (408) 588-0201

Method Blank - Liquid - EPA 8260B - EPA 8260B

QC Batch ID: WM1051018B

Validated by: MaiChiTu - 10/19/05

QC Batch Analysis Date: 10/18/2005

Parameter	Result	DF	PQLR	Units
Dibromochloromethane	ND	1	0.50	µg/L
Dibromomethane	ND	1	0.50	µg/L
Dichlorodifluoromethane	ND	1	0.50	µg/L
Diisopropyl Ether	ND	1	5.0	µg/L
Ethyl Benzene	ND	1	0.50	µg/L
Freon 113	ND	1	5.0	µg/L
Hexachlorobutadiene	ND	1	5.0	µg/L
Iodomethane	ND	1	1.0	µg/L
Isopropanol	ND	1	20	µg/L
Isopropylbenzene	ND	1	1.0	µg/L
Methylene Chloride	ND	1	20	µg/L
Methyl-t-butyl Ether	ND	1	1.0	µg/L
Naphthalene	ND	1	5.0	µg/L
n-Butylbenzene	ND	1	5.0	µg/L
n-Propylbenzene	ND	1	5.0	µg/L
Pentachloroethane	ND	1	0.50	µg/L
p-Isopropyltoluene	ND	1	5.0	µg/L
sec-Butylbenzene	ND	1	5.0	µg/L
Styrene	ND	1	0.50	µg/L
tert-Amyl Methyl Ether	ND	1	5.0	µg/L
tert-Butanol (TBA)	ND	1	10	µg/L
tert-Butyl Ethyl Ether	ND	1	5.0	µg/L
tert-Butylbenzene	ND	1	5.0	µg/L
Tetrachloroethene	ND	1	0.50	µg/L
Tetrahydrofuran	ND	1	20	µg/L
Toluene	ND	1	0.50	µg/L
trans-1,2-Dichloroethene	ND	1	0.50	µg/L
trans-1,3-Dichloropropene	ND	1	0.50	µg/L
trans-1,4-Dichloro-2-butene	ND	1	1.0	µg/L
Trichloroethene	ND	1	0.50	µg/L
Trichlorofluoromethane	ND	1	0.50	µg/L
Vinyl Acetate	ND	1	5.0	µg/L
Vinyl Chloride	ND	1	0.50	µg/L
Xylenes, Total	ND	1	0.50	µg/L

Surrogate for Blank	% Recovery	Control Limits
---------------------	------------	----------------

4-Bromofluorobenzene	90.9	70 - 125
Dibromofluoromethane	116	70 - 125
Toluene-d8	107	70 - 125

Entech Analytical Labs, Inc.

3334 Victor Court , Santa Clara, CA 95054 Phone: (408) 588-0200 Fax: (408) 588-0201

Laboratory Control Sample / Duplicate - Liquid - EPA 8260B - EPA 8260B

QC Batch ID: WM1051018B

Reviewed by: MaiChiTu - 10/19/05

QC Batch ID Analysis Date: 10/18/2005

LCS

Parameter	Method Blank	Spike Amt	SpikeResult	Units	% Recovery	Recovery Limits
1,1-Dichloroethene	<0.50	20	21.7	µg/L	108	70 - 130
Benzene	<0.50	20	20.7	µg/L	104	70 - 130
Chlorobenzene	<0.50	20	20.9	µg/L	104	70 - 130
Methyl-t-butyl Ether	<1.0	20	18.2	µg/L	91.0	70 - 130
Toluene	<0.50	20	21.6	µg/L	108	70 - 130
Trichloroethene	<0.50	20	20.5	µg/L	102	70 - 130

Surrogate	% Recovery	Control Limits
4-Bromofluorobenzene	88.7	70 - 130
Dibromofluoromethane	106	70 - 130
Toluene-d8	99.4	70 - 130

LCSD

Parameter	Method Blank	Spike Amt	SpikeResult	Units	% Recovery	RPD	RPD Limits	Recovery Limits
1,1-Dichloroethene	<0.50	20	21.7	µg/L	108	0.0	25.0	70 - 130
Benzene	<0.50	20	20.9	µg/L	104	0.96	25.0	70 - 130
Chlorobenzene	<0.50	20	21.4	µg/L	107	2.4	25.0	70 - 130
Methyl-t-butyl Ether	<1.0	20	19.8	µg/L	99.0	8.4	25.0	70 - 130
Toluene	<0.50	20	21.4	µg/L	107	0.93	25.0	70 - 130
Trichloroethene	<0.50	20	20.8	µg/L	104	1.5	25.0	70 - 130

Surrogate	% Recovery	Control Limits
4-Bromofluorobenzene	87.2	70 - 130
Dibromofluoromethane	107	70 - 130
Toluene-d8	97.6	70 - 130

Entech Analytical Labs, Inc.

3334 Victor Court , Santa Clara, CA 95054 Phone: (408) 588-0200 Fax: (408) 588-0201

Method Blank - Liquid - EPA 8260B - EPA 8260B

QC Batch ID: WM1051019

Validated by: MaiChiTu - 10/20/05

QC Batch Analysis Date: 10/19/2005

Parameter	Result	DF	PQLR	Units
1,1,1,2-Tetrachloroethane	ND	1	0.50	µg/L
1,1,1-Trichloroethane	ND	1	0.50	µg/L
1,1,2,2-Tetrachloroethane	ND	1	0.50	µg/L
1,1,2-Trichloroethane	ND	1	0.50	µg/L
1,1-Dichloroethane	ND	1	0.50	µg/L
1,1-Dichloroethene	ND	1	0.50	µg/L
1,1-Dichloropropene	ND	1	0.50	µg/L
1,2,3-Trichlorobenzene	ND	1	5.0	µg/L
1,2,3-Trichloropropane	ND	1	0.50	µg/L
1,2,4-Trichlorobenzene	ND	1	5.0	µg/L
1,2,4-Trimethylbenzene	ND	1	5.0	µg/L
1,2-Dibromo-3-Chloropropane	ND	1	5.0	µg/L
1,2-Dibromoethane (EDB)	ND	1	0.50	µg/L
1,2-Dichlorobenzene	ND	1	0.50	µg/L
1,2-Dichloroethane	ND	1	0.50	µg/L
1,2-Dichloropropane	ND	1	0.50	µg/L
1,3,5-Trimethylbenzene	ND	1	5.0	µg/L
1,3-Dichlorobenzene	ND	1	0.50	µg/L
1,3-Dichloropropane	ND	1	0.50	µg/L
1,4-Dichlorobenzene	ND	1	0.50	µg/L
1,4-Dioxane	ND	1	50	µg/L
2,2-Dichloropropane	ND	1	0.50	µg/L
2-Butanone (MEK)	ND	1	20	µg/L
2-Chloroethyl-vinyl Ether	ND	1	5.0	µg/L
2-Chlorotoluene	ND	1	5.0	µg/L
2-Hexanone	ND	1	20	µg/L
4-Chlorotoluene	ND	1	5.0	µg/L
4-Methyl-2-Pentanone(MIBK)	ND	1	20	µg/L
Acetone	ND	1	20	µg/L
Acetonitrile	ND	1	5.0	µg/L
Acrolein	ND	1	5.0	µg/L
Acrylonitrile	ND	1	5.0	µg/L
Benzene	ND	1	0.50	µg/L
Benzyl Chloride	ND	1	5.0	µg/L
Bromobenzene	ND	1	0.50	µg/L
Bromochloromethane	ND	1	0.50	µg/L
Bromodichloromethane	ND	1	0.50	µg/L
Bromoform	ND	1	0.50	µg/L
Bromomethane	ND	1	0.50	µg/L
Carbon Disulfide	ND	1	0.50	µg/L
Carbon Tetrachloride	ND	1	0.50	µg/L
Chlorobenzene	ND	1	0.50	µg/L
Chloroethane	ND	1	0.50	µg/L
Chloroform	ND	1	0.50	µg/L
Chloromethane	ND	1	0.50	µg/L
cis-1,2-Dichloroethene	ND	1	0.50	µg/L
cis-1,3-Dichloropropene	ND	1	0.50	µg/L
Cyclohexanone	ND	1	20	µg/L

Entech Analytical Labs, Inc.

3334 Victor Court , Santa Clara, CA 95054 Phone: (408) 588-0200 Fax: (408) 588-0201

Method Blank - Liquid - EPA 8260B - EPA 8260B

QC Batch ID: WM1051019

Validated by: MaiChiTu - 10/20/05

QC Batch Analysis Date: 10/19/2005

Parameter	Result	DF	PQLR	Units
Dibromochloromethane	ND	1	0.50	µg/L
Dibromomethane	ND	1	0.50	µg/L
Dichlorodifluoromethane	ND	1	0.50	µg/L
Diisopropyl Ether	ND	1	5.0	µg/L
Ethyl Benzene	ND	1	0.50	µg/L
Freon 113	ND	1	5.0	µg/L
Hexachlorobutadiene	ND	1	5.0	µg/L
Iodomethane	ND	1	1.0	µg/L
Isopropanol	ND	1	20	µg/L
Isopropylbenzene	ND	1	1.0	µg/L
Methylene Chloride	ND	1	20	µg/L
Methyl-t-butyl Ether	ND	1	1.0	µg/L
Naphthalene	ND	1	5.0	µg/L
n-Butylbenzene	ND	1	5.0	µg/L
n-Propylbenzene	ND	1	5.0	µg/L
Pentachloroethane	ND	1	0.50	µg/L
p-Isopropyltoluene	ND	1	5.0	µg/L
sec-Butylbenzene	ND	1	5.0	µg/L
Styrene	ND	1	0.50	µg/L
tert-Amyl Methyl Ether	ND	1	5.0	µg/L
tert-Butanol (TBA)	ND	1	10	µg/L
tert-Butyl Ethyl Ether	ND	1	5.0	µg/L
tert-Butylbenzene	ND	1	5.0	µg/L
Tetrachloroethene	ND	1	0.50	µg/L
Tetrahydrofuran	ND	1	20	µg/L
Toluene	ND	1	0.50	µg/L
trans-1,2-Dichloroethene	ND	1	0.50	µg/L
trans-1,3-Dichloropropene	ND	1	0.50	µg/L
trans-1,4-Dichloro-2-butene	ND	1	1.0	µg/L
Trichloroethene	ND	1	0.50	µg/L
Trichlorofluoromethane	ND	1	0.50	µg/L
Vinyl Acetate	ND	1	5.0	µg/L
Vinyl Chloride	ND	1	0.50	µg/L
Xylenes, Total	ND	1	0.50	µg/L

Surrogate for Blank	% Recovery	Control Limits
4-Bromofluorobenzene	93.9	70 - 125
Dibromofluoromethane	115	70 - 125
Toluene-d8	106	70 - 125

Entech Analytical Labs, Inc.

3334 Victor Court , Santa Clara, CA 95054 Phone: (408) 588-0200 Fax: (408) 588-0201

Laboratory Control Sample / Duplicate - Liquid - EPA 8260B - EPA 8260B

QC Batch ID: WM1051019

Reviewed by: MaiChiTu - 10/20/05

QC Batch ID Analysis Date: 10/19/2005

LCS

Parameter	Method Blank	Spike Amt	SpikeResult	Units	% Recovery	Recovery Limits
1,1-Dichloroethene	<0.50	20	21.3	µg/L	106	70 - 130
Benzene	<0.50	20	20.8	µg/L	104	70 - 130
Chlorobenzene	<0.50	20	21.7	µg/L	108	70 - 130
Methyl-t-butyl Ether	<1.0	20	19.6	µg/L	98.0	70 - 130
Toluene	<0.50	20	21.6	µg/L	108	70 - 130
Trichloroethene	<0.50	20	21.3	µg/L	106	70 - 130

Surrogate	% Recovery	Control Limits
4-Bromofluorobenzene	89.9	70 - 130
Dibromofluoromethane	105	70 - 130
Toluene-d8	96.3	70 - 130

LCSD

Parameter	Method Blank	Spike Amt	SpikeResult	Units	% Recovery	RPD	RPD Limits	Recovery Limits
1,1-Dichloroethene	<0.50	20	20.7	µg/L	104	2.9	25.0	70 - 130
Benzene	<0.50	20	20.0	µg/L	100	3.9	25.0	70 - 130
Chlorobenzene	<0.50	20	21.1	µg/L	106	2.8	25.0	70 - 130
Methyl-t-butyl Ether	<1.0	20	19.4	µg/L	97.0	1.0	25.0	70 - 130
Toluene	<0.50	20	20.9	µg/L	104	3.3	25.0	70 - 130
Trichloroethene	<0.50	20	20.6	µg/L	103	3.3	25.0	70 - 130

Surrogate	% Recovery	Control Limits
4-Bromofluorobenzene	89.9	70 - 130
Dibromofluoromethane	103	70 - 130
Toluene-d8	96.7	70 - 130

Entech Analytical Labs, Inc.

3334 Victor Court , Santa Clara, CA 95054 Phone: (408) 588-0200 Fax: (408) 588-0201

Method Blank - Liquid - GC-MS - TPH as Gasoline - GC-MS

QC Batch ID: WM1051018B

Validated by: MaiChiTu - 10/19/05

QC Batch Analysis Date: 10/18/2005

Parameter	Result	DF	PQLR	Units
TPH as Gasoline	ND	1	25	µg/L

Surrogate for Blank	% Recovery	Control Limits
4-Bromofluorobenzene	102	70 - 130
Dibromofluoromethane	106	70 - 130
Toluene-d8	101	70 - 130

Laboratory Control Sample / Duplicate - Liquid - GC-MS - TPH as Gasoline - GC-MS

QC Batch ID: WM1051018B

Reviewed by: MaiChiTu - 10/19/05

QC Batch ID Analysis Date: 10/18/2005

Parameter	Method Blank	Spike Amt	SpikeResult	Units	% Recovery	Recovery Limits
TPH as Gasoline	<25	120	119	µg/L	95.4	65 - 135

Surrogate	% Recovery	Control Limits
4-Bromofluorobenzene	97.7	70 - 130
Dibromofluoromethane	96.9	70 - 130
Toluene-d8	94.9	70 - 130

Parameter	Method Blank	Spike Amt	SpikeResult	Units	% Recovery	RPD	RPD Limits	Recovery Limits
TPH as Gasoline	<25	120	117	µg/L	93.8	1.7	25.0	65 - 135

Surrogate	% Recovery	Control Limits
4-Bromofluorobenzene	102	70 - 130
Dibromofluoromethane	94.3	70 - 130
Toluene-d8	92.2	70 - 130

Entech Analytical Labs, Inc.

3334 Victor Court , Santa Clara, CA 95054 Phone: (408) 588-0200 Fax: (408) 588-0201

Method Blank - Liquid - GC-MS - TPH as Gasoline - GC-MS

QC Batch ID: WM1051019

Validated by: MaiChiTu - 10/20/05

QC Batch Analysis Date: 10/19/2005

Parameter	Result	DF	PQLR	Units
TPH as Gasoline	ND	1	25	µg/L

Surrogate for Blank	% Recovery	Control Limits
4-Bromofluorobenzene	106	70 - 130
Dibromofluoromethane	106	70 - 130
Toluene-d8	100	70 - 130

Laboratory Control Sample / Duplicate - Liquid - GC-MS - TPH as Gasoline - GC-MS

QC Batch ID: WM1051019

Reviewed by: MaiChiTu - 10/20/05

QC Batch ID Analysis Date: 10/19/2005

Parameter	Method Blank	Spike Amt	SpikeResult	Units	% Recovery	Recovery Limits
TPH as Gasoline	<25	120	130	µg/L	104	65 - 135

Surrogate	% Recovery	Control Limits
4-Bromofluorobenzene	101	70 - 130
Dibromofluoromethane	94.1	70 - 130
Toluene-d8	94.5	70 - 130

Parameter	Method Blank	Spike Amt	SpikeResult	Units	% Recovery	RPD	RPD Limits	Recovery Limits
TPH as Gasoline	<25	120	126	µg/L	101	3.5	25.0	65 - 135

Surrogate	% Recovery	Control Limits
4-Bromofluorobenzene	102	70 - 130
Dibromofluoromethane	94.5	70 - 130
Toluene-d8	95.3	70 - 130

Golden Gate Tank Removal, Inc.

WELL PURGING/SAMPLING DATA

Project Number: 7335 Date: 10/14/05
 Project / Site Location: 5930 College Ave
Oakland, CA
 Sampler/Technician: Shaun O'Bryan
 Well I.D.: PW-1

EVENT: SAMPLING WELL DEVELOPMENT

DEPTH TO WATER: 10.71
 DEPTH TO BOTTOM: 17.79
 COC/TOWB

1401
 DTW @ ST = 12.20

Well Diameter	Water Column	ft.x 0.163 gal/ft =	Casing Volume (gals.)	X	=	Total Purge (gals.)
2-inch well	<u>7.08</u>		<u>1.15</u>	X	<u>3</u>	<u>3,460</u>
4-inch well		ft.x 0.652 gal/ft =		X		
6-inch well		ft.x gal/ft =		X		

100 percent recharge level: 12.13 Type of Pump: Disp. Bailer Sampling Device: Disp. Bailer

GROUNDWATER PARAMETERS

TIME	GALS. PURGED	TEMP (°C)	pH	COND.	D.O.	ORP	ODOR/SHEEN	NOTES/OTHER
<u>1139</u>	<u>1.25</u>	<u>18.6</u>	<u>7.6</u>	<u>478</u>				<u>Very muddy</u>
<u>1143</u>	<u>2.5</u>	<u>18.6</u>	<u>7.7</u>	<u>537</u>		<u>372</u>		<u>" "</u>
<u>1147</u>	<u>3.5</u>	<u>18.5</u>	<u>7.6</u>	<u>596</u>				

Total Volume: 3.5 Gals.

in / out of well
 in / out of well

Golden Gate Tank Removal, Inc.

WELL PURGING/SAMPLING DATA

Project Number: 7335 Date: 10/14/05

Project / Site Location: 5930 College Ave
Oakland

Sampler/Technician: Shawn O'Bryan

WELL I.D.: MW-1

EVENT: SAMPLING WELL DEVELOPMENT

DEPTH TO WATER: 9.58
DEPTH TO BOTTOM: 14.56
TOC / TOWB

DTW @ S.T. = 10.52
1329

Well Diameter	Water Column	Casing Volume (gals.)			Total Purge (gals.)
2-inch well	<u>4.98</u>	<u>1.81</u>	ft. x 0.163 gal/ft =	X <u>3</u> =	<u>2.44</u>
4-inch well			ft. x 0.652 gal/ft =	X _____ =	
-inch well			ft. x _____ gal/ft =	X _____ =	

80 percent recharge level: 10.58 Type of Pump: Disp. Bailer Sampling Device: Disp. Bailer

GROUNDWATER PARAMETERS								
TIME	GALS. PURGED	TEMP (°C)	pH	COND.	D.O.	ORP	ODOR/SHEEN	NOTES/OTHER
<u>12:03</u>	<u>1</u>	<u>19.2</u>	<u>7.7</u>	<u>569</u>			<u>Shwn Odor</u>	<u>Clean</u>
<u>12:06</u>	<u>2</u>	<u>19.0</u>	<u>7.6</u>	<u>569</u>		<u>223</u>	<u>11</u>	<u>11</u>
<u>12:08</u>	<u>2.5</u>	<u>19.2</u>	<u>7.7</u>	<u>570</u>			<u>11</u>	<u>11</u>

Total Volume: 2.5 Gals.

in / out of well in / out of well

Golden Gate Tank Removal, Inc.

WELL PURGING/SAMPLING DATA

Project Number: 7335 Date: 10/14/05

Project / Site Location: 5930 College Ave
Oakland

Sampler/Technician: Shaun O'Bryan

WELL I.D.: MW-2

EVENT: SAMPLING WELL DEVELOPMENT

DEPTH TO WATER: 10.92
DEPTH TO BOTTOM: 19.66
TOC / TOWB

DTW @ 12.72 @
Sample Time 1344

Well Diameter	Water Column	Casing Volume (gals.)			Total Purge (gals.)
2-inch well	<u>8.74</u>	<u>1.42</u>	X	<u>3</u>	<u>4.27</u>
4-inch well			X		
-inch well			X		

80 percent recharge level: 12.67 Type of Pump: Centrifugal Sampling Device: Dig. Bailer

GROUNDWATER PARAMETERS								
TIME	GALS. PURGED	TEMP (°C)	pH	COND.	D.O.	ORP	ODOR/SHEEN	NOTES/OTHER
<u>1245</u>	<u>1.5</u>	<u>18.3</u>	<u>7.6</u>	<u>647</u>			<u>Odor Sheen</u>	<u>Clear</u>
<u>1248</u>	<u>3</u>	<u>17.5</u>	<u>7.8</u>	<u>644</u>		<u>212</u>	"	"
<u>1249</u>	<u>4.5</u>	<u>19.2</u>	<u>7.7</u>	<u>641</u>			"	"

Total Volume: 4.5 Gals.

in / out of well in / out of well

Golden Gate Tank Removal, Inc.

WELL PURGING/SAMPLING DATA

Project Number: 7335 Date: 10/14/05

Project / Site Location: 5930 College Ave
Oakland, CA

Sampler/Technician: Shaun O'Bryan

WELL I.D.: MW-3

EVENT: SAMPLING WELL DEVELOPMENT

DEPTH TO WATER: 9.83

DEPTH TO BOTTOM: 18.91

TOC/TOWB

DTW = 10.89 @ ³⁰⁵ Sample Time

Well Diameter
2-inch well <input checked="" type="checkbox"/>
4-inch well
-inch well

Water Column
<u>10.08</u>

ft.x 0.163 gal/ft =
ft.x 0.652 gal/ft =
ft.x _____ gal/ft =

Casing Volume (gals.)
<u>1.64</u>

X 3 =
X _____ =
X _____ =

Total Purge (gals.)
<u>4.9</u>

80 percent recharge level: 10.99 Type of Pump: Disp. Bailer Sampling Device: Disp. Bailer

GROUNDWATER PARAMETERS								
TIME	GALS. PURGED	TEMP (°C)	pH	COND.	D.O.	ORP	ODOR/SHEEN	NOTES/OTHER
10:57	1.25	18.7	7.4	172.2			Odor	
11:03	2.5	18.5	7.4	175.5				
11:08	4.5	18.5	7.5	179.0		313		Sheen
11:12	5	18.4	7.5	178				

Total Volume: 5 Gals.

in / out
of well

in / out
of well

Electronic Submittal Information

[Main Menu](#) | [View/Add Facilities](#) | [Upload EDD](#) | [Check EDD](#)

UPLOADING A GEO_WELL FILE

Processing is complete. No errors were found!
Your file has been successfully submitted!

Submittal Title: fluid level monitoring data; MW1-MW3, PW-1,
10/14/05

Submittal Date/Time: 10/24/2005 2:18:55 PM

Confirmation
Number: 3469557046

[Back to Main Menu](#)

Logged in as GGTR (AUTH_RP)

[CONTACT SITE ADMINISTRATOR](#)

Electronic Submittal Information

[Main Menu](#) |
 [View/Add Facilities](#) |
 [Upload EDD](#) |
 [Check EDD](#)

Your EDF file has been successfully uploaded!

Confirmation Number: 1188632249

Date/Time of Submittal: 10/24/2005 2:28:11 PM

Facility Global ID: T0600102112

Facility Name: SHEAFFS SERVICE GARAGE

Submittal Title: 45825: 10/14/05 Groundwater Monitoring Analytical Data (MW1-MW3, PW-1)

Submittal Type: GW Monitoring Report

Click [here](#) to view the detections report for this upload.

SHEAFFS SERVICE GARAGE
 5930 COLLEGE AVE
 OAKLAND, CA 94618

Regional Board - Case #: 01-2296
 SAN FRANCISCO BAY RWQCB (REGION 2) - (BG)
Local Agency (lead agency) - Case #: 514
 ALAMEDA COUNTY LOP - (AG)

CONF #	TITLE	QUARTER
1188632249	45825: 10/14/05 Groundwater Monitoring Analytical Data (MW1-MW3, PW-1)	Q4 2005
SUBMITTED BY	SUBMIT DATE	STATUS
Brent Wheeler	10/24/2005	PENDING REVIEW

SAMPLE DETECTIONS REPORT

# FIELD POINTS SAMPLED	4
# FIELD POINTS WITH DETECTIONS	4
# FIELD POINTS WITH WATER SAMPLE DETECTIONS ABOVE MCL	4
SAMPLE MATRIX TYPES	WATER

METHOD QA/QC REPORT

METHODS USED	8260TPH,SW8260B
TESTED FOR REQUIRED ANALYTES?	N
MISSING PARAMETERS NOT TESTED:	
- SW8260B REQUIRES EDB TO BE TESTED	
LAB NOTE DATA QUALIFIERS	N

QA/QC FOR 8021/8260 SERIES SAMPLES

TECHNICAL HOLDING TIME VIOLATIONS	0
METHOD HOLDING TIME VIOLATIONS	0
LAB BLANK DETECTIONS ABOVE REPORTING DETECTION LIMIT	0
LAB BLANK DETECTIONS	0
DO ALL BATCHES WITH THE 8021/8260 SERIES INCLUDE THE FOLLOWING?	
- LAB METHOD BLANK	Y
- MATRIX SPIKE	N
- MATRIX SPIKE DUPLICATE	N
- BLANK SPIKE	Y
- SURROGATE SPIKE	Y

WATER SAMPLES FOR 8021/8260 SERIES

MATRIX SPIKE / MATRIX SPIKE DUPLICATE(S) % RECOVERY BETWEEN 65-135%	n/a
MATRIX SPIKE / MATRIX SPIKE DUPLICATE(S) RPD LESS THAN 30%	n/a
SURROGATE SPIKES % RECOVERY BETWEEN 85-115%	N
BLANK SPIKE / BLANK SPIKE DUPLICATES % RECOVERY BETWEEN 70-130%	Y

SOIL SAMPLES FOR 8021/8260 SERIES

MATRIX SPIKE / MATRIX SPIKE DUPLICATE(S) % RECOVERY BETWEEN 65-135%	n/a
MATRIX SPIKE / MATRIX SPIKE DUPLICATE(S) RPD LESS THAN 30%	n/a
SURROGATE SPIKES % RECOVERY BETWEEN 70-125%	n/a
BLANK SPIKE / BLANK SPIKE DUPLICATES % RECOVERY BETWEEN 70-130%	n/a

FIELD QC SAMPLES

<u>SAMPLE</u>	<u>COLLECTED</u>	<u>DETECTIONS > REPD</u>
QCTB SAMPLES	N	0
QCEB SAMPLES	N	0
QCAB SAMPLES	N	0

Logged in as GGTR (AUTH_RP)

CONTACT SITE ADMINISTRATOR