



RECEIVED  
PROTECTION  
20 MAR 25 11 11 21

March 19, 1998

Scott Seery  
Alameda County Department of  
Environmental Health  
Hazardous Materials Division  
1131 Harbor Bay Parkway, 2nd Floor  
Alameda, California 94502-6577

Re: **Fourth Quarter 1997 Monitoring Report**  
Shell Service Station  
1784 150th Avenue  
San Leandro, California  
WIC #204-6852-1404  
Cambria #24-314-497

Dear Mr. Seery:

On behalf of Shell Oil Products Company (Shell), Cambria Environmental Technology, Inc. (Cambria) is submitting this monitoring report to satisfy the quarterly reporting requirements prescribed by California Administrative Code Title 23 Waters, Division 3, Chapter 16, Article 5, Section 2652.d.

#### **FOURTH QUARTER 1997 ACTIVITIES**

**Ground Water Monitoring:** On December 18, 1997, Blaine Tech Services, Inc. (Blaine) of San Jose, California measured ground water depths, checked for separate-phase hydrocarbons (SPH), and collected ground water samples from the site wells (Figure 1). No SPH was detected in the wells. **Due to a laboratory oversight, the samples were not analyzed within hold time.** The oversight was not discovered until after the end of the fourth quarter of 1997. As approved on March 5, 1998 by Scott Seery of the Alameda County Department of Environmental Health (ACDEH), **Cambria is submitting a fourth quarter ground water elevation contour map without analytical data, and we will submit a first quarter monitoring report based on samples collected by Blaine on February 2, 1998.**

**Dispenser Upgrade Sampling:** On December 4, 1997, Cambria collected soil samples beneath four fuel dispensers that were being upgraded. Mr. Amir Gholami of the ACDEH was on site during the sampling. The sampling was described in our facsimile to Mr. Seery dated December 4, 1997

CAMBRIA  
ENVIRONMENTAL  
TECHNOLOGY, INC.  
1144 65TH STREET,  
SUITE B  
OAKLAND,  
CA 94608  
PH: (510) 420-0700  
FAX: (510) 420-9170

Scott Seery  
March 19, 1998

CAMBRIA

## FIRST QUARTER 1998 ACTIVITIES

**Ground Water Monitoring:** After the laboratory oversight was discovered, Blaine scheduled the soonest possible date to sample the site. On February 2, 1998, Blaine measured ground water depths, collected water samples, and checked for accumulated SPH. Cambria will submit a report presenting a summary of activities for first quarter 1998.

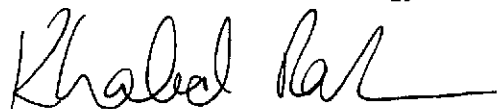
**Dispenser Upgrade Sampling:** Cambria will submit a report presenting the soil sample analytical results.

**Corrective Action Plan (CAP):** Cambria submitted a CAP dated January 9, 1998 for the site which proposed installation of additional monitoring wells and continued ground water monitoring. Upon written approval of the CAP by the ACDEH, Cambria will obtain the necessary permits and schedule field activities.

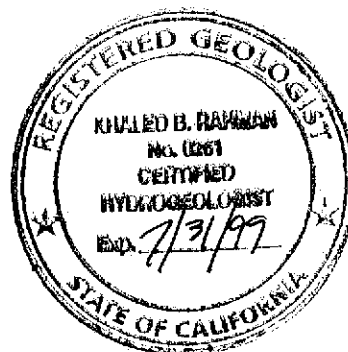
## CLOSING

We appreciate your assistance with this project. Please call if you have any questions.

Sincerely,  
Cambria Environmental Technology, Inc.



Khaled B. Rahman, R.G., C.H.G.  
Senior Geologist



Attachments: A - Blaine Ground Water Monitoring Report

cc: A. E. (Alex) Perez, Shell Oil Products Company, P.O. Box 8080, Martinez, California 94553

F:\PROJECT\HELLASNL1784\QM4Q97QM.WPD

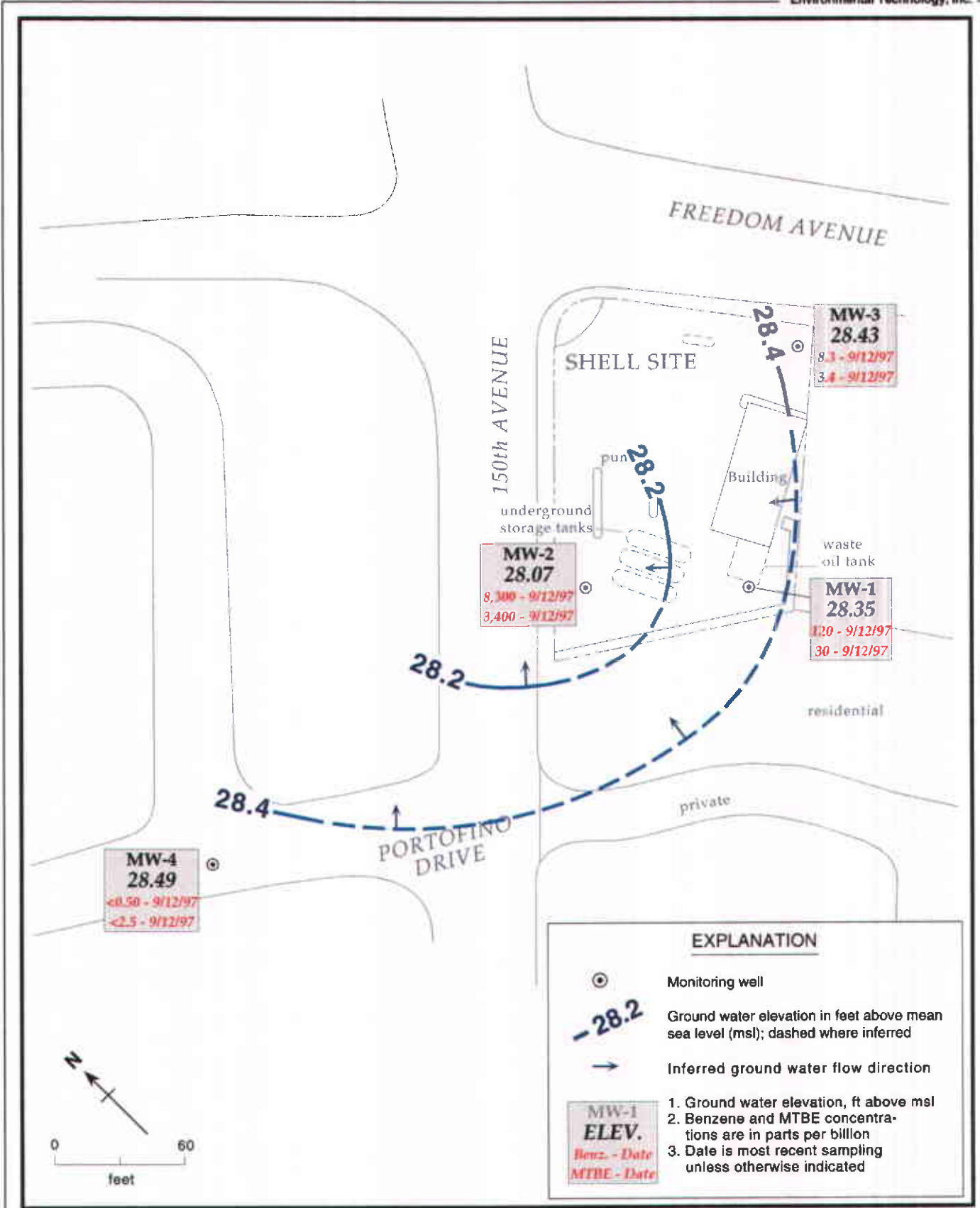


Figure 1 . Ground Water Elevation Contours - December 18, 1997 - Shell Service Station, 1784 150th Avenue, San Leandro, California