



ENVIRONMENTAL HEALTH SERVICES
ENVIRONMENTAL PROTECTION
1131 Harbor Bay Parkway, Suite 250
Alameda, CA 94502-6577
(510) 567-6700
FAX (510) 337-9335

NOTIFICATION OF POTENTIAL CASE CLOSURE
SHELL#13-6019
February 6, 2013

Site Location: 1784 150th Avenue, San Leandro, CA 94578
Fuel Leak Case RO0000367 and GeoTracker Global ID T0600101265

Summary – This fact sheet has been prepared to inform community members and other interested parties of potential case closure for a fuel leak case at the Shell-branded service station located at 1784 150th Avenue in San Leandro, California (see attached map on back). The property has operated as a Shell-branded service station since 1966. Currently, the station is equipped with a convenience store, service bays, two fuel dispenser islands, and three 10,000-gallon gasoline underground storage tanks (USTs). Surrounding land use is mixed residential and commercial.

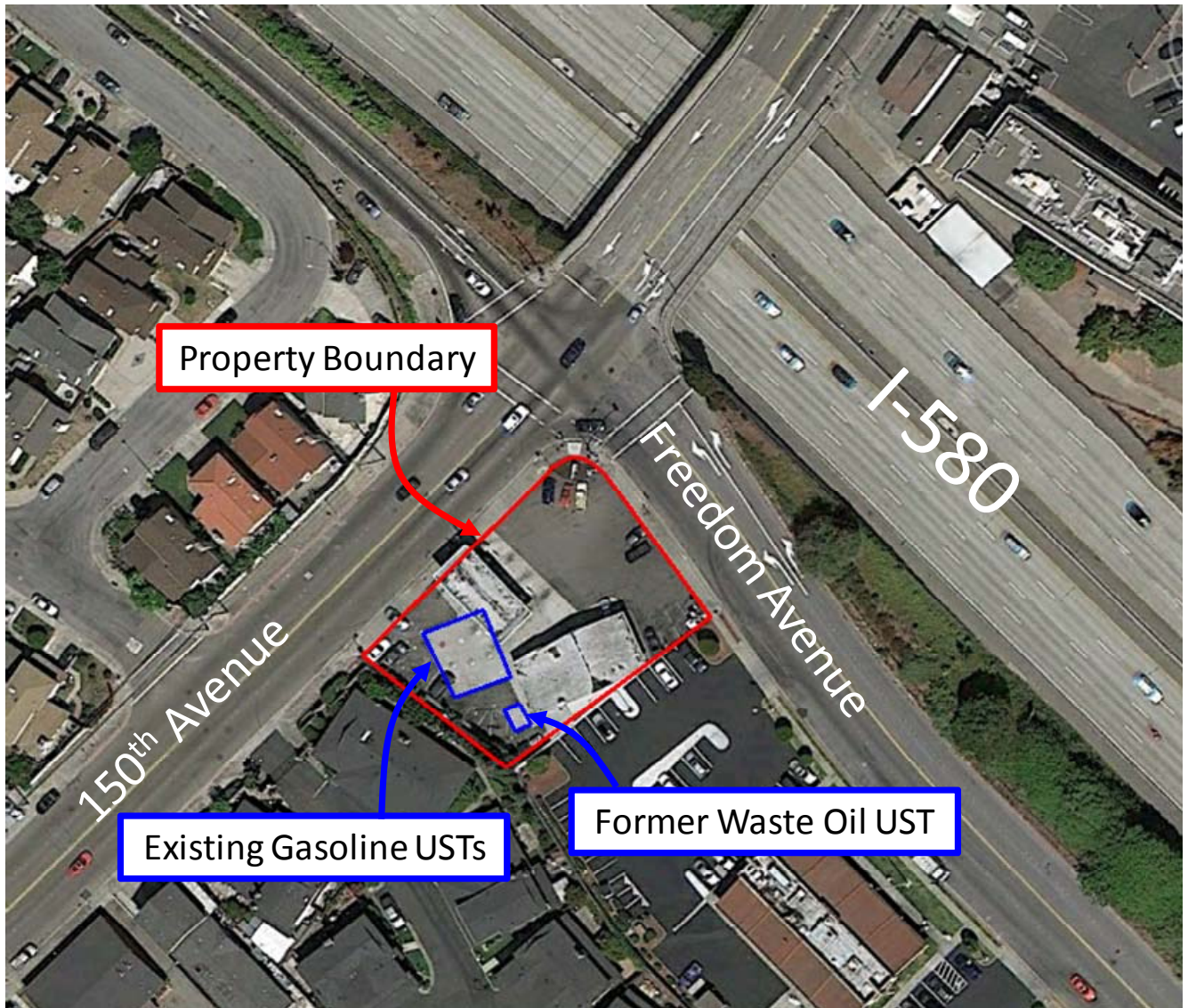
Petroleum hydrocarbons were first detected at the site during the replacement of a waste oil underground storage tank (UST) in 1986. Soil samples collected during the tank replacement contained up to 196 parts per million (ppm) total oil and grease. Groundwater samples were first collected from the site in 1994 and found to contain 20,000 parts per billion (ppb) Total Petroleum Hydrocarbons as gasoline (TPHg) and 25,000 ppb benzene. Soil vapor sampling conducted in 1996 detected elevated concentrations of petroleum hydrocarbons in soil vapor near the northwest corner of the gasoline UST complex.

Site investigation activities to define the extent of petroleum hydrocarbons in soil and groundwater have included exploratory borings, cone penetration test borings, groundwater monitoring, and soil vapor sampling. A temporary groundwater extraction system operated at the site between January 10 and April 13, 2005. Periodic groundwater extraction was conducted at the site as an interim cleanup action from July 2002 through March 2004. Multi-phase extraction was conducted as a pilot test in November 2008. Pilot tests for air sparging and soil vapor extraction were conducted in March 2009 and November 2010. Additionally, the fuel dispensers, turbine sumps, piping and USTs were all upgraded on separate occasions. Groundwater monitoring began in March 1990 and was most recently performed in September 2012.

The soil and groundwater data indicate that a plume containing dissolved petroleum hydrocarbons likely extends from the Shell site northwest beneath 150th Avenue. The plume appears to be stable and residual petroleum hydrocarbons in soil and groundwater are expected to biodegrade over time. The site has been evaluated in accordance with the State Water Resources Control Board Low-Threat Closure Policy. Site investigation and cleanup activities have been completed and it does not appear that the fuel release presents a risk to human health for nearby residents or site workers. Therefore, ACEH is considering potential closure of the fuel leak case.

Next Step – The public is invited to review and comment on the potential closure of the fuel leak case. The entire case file can be viewed over the Internet on the ACEH website (<http://www.acgov.org/aceh/lop/ust.htm>) or the State of California Water Resources Control Board GeoTracker website (<http://geotracker.swrcb.ca.gov>). Please send written comments to Jerry Wickham at the address below; all comments will be forwarded to the responsible parties. **Comments received by April 16, 2013** will be considered and responded to prior to a final determination on the proposed case closure.

Additional information: Contact Jerry Wickham of the Alameda County Department of Environmental Health, 1131 Harbor Bay Parkway, Alameda, CA 94502 at 510-567-6791 or by email at jerry.wickham@acgov.org



1784 150th Avenue, San Leandro, CA (Google, 2012)