

EXPLANATION

- 1 ⊙ Unknown well
- 3 ⊘ Destroyed well
- 4 ⊗ Abandoned well
- 5 ⊕ Municipal well
- ★ Subject site
- Study area

0 1/8 1/4 1/2 1
 SCALE : 1" = 1/4 MILE

Shell-branded Service Station

3790 Hopyard Road
 Pleasanton, California
 Incident #98995842

*received @
 Feb. 13 meeting*

Vicinity/Area Well Survey Map

1/2 Mile Radius

02/11/03

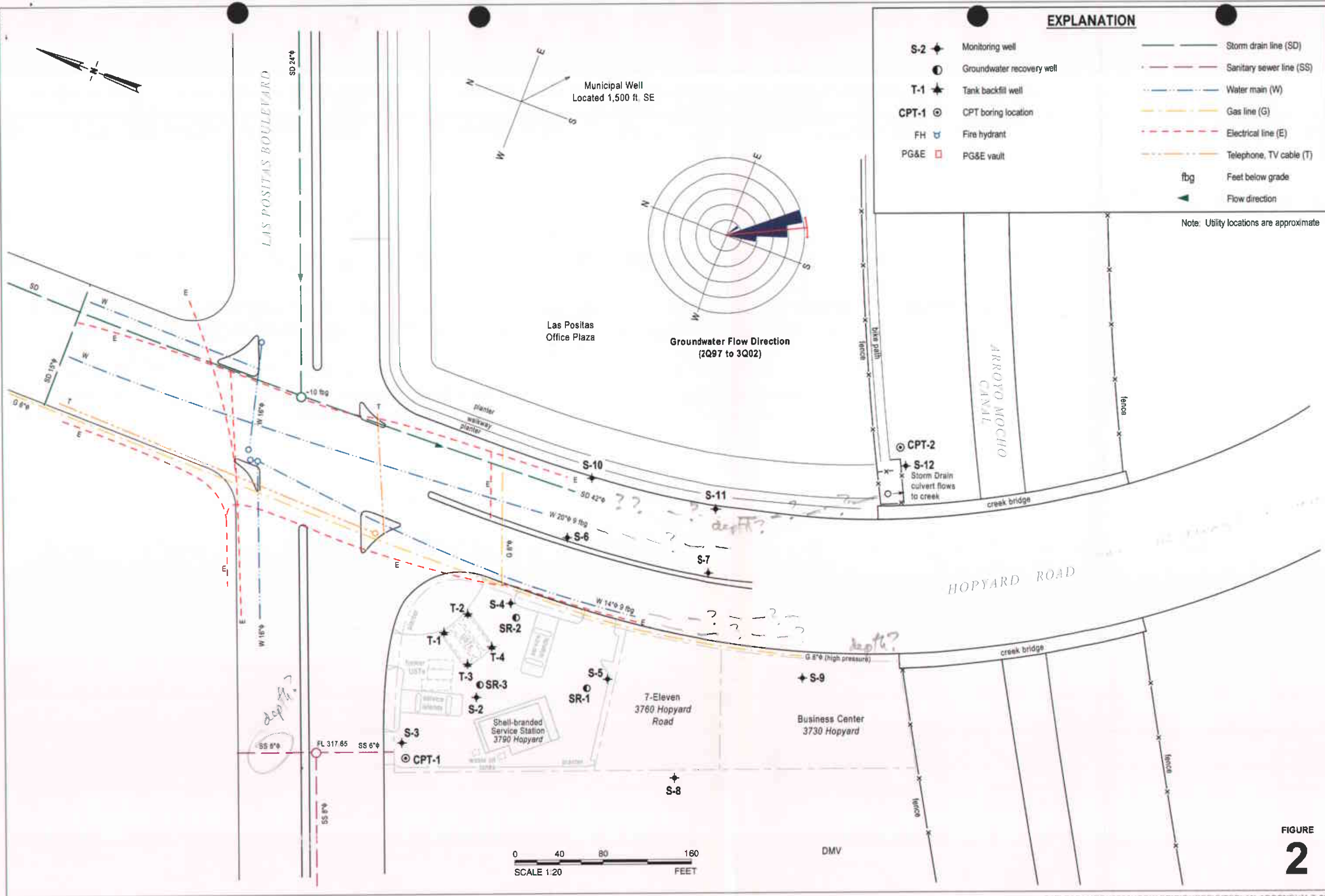


FIGURE 2

G:\PLEASANTON\3790HOPYARD\FIGURES\SITEPLAN-ADDENDUM-7-02.A1



EXPLANATION

- ◆ Active Municipal well
- ⊗ Inactive Municipal well

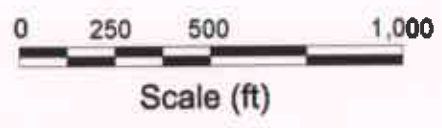
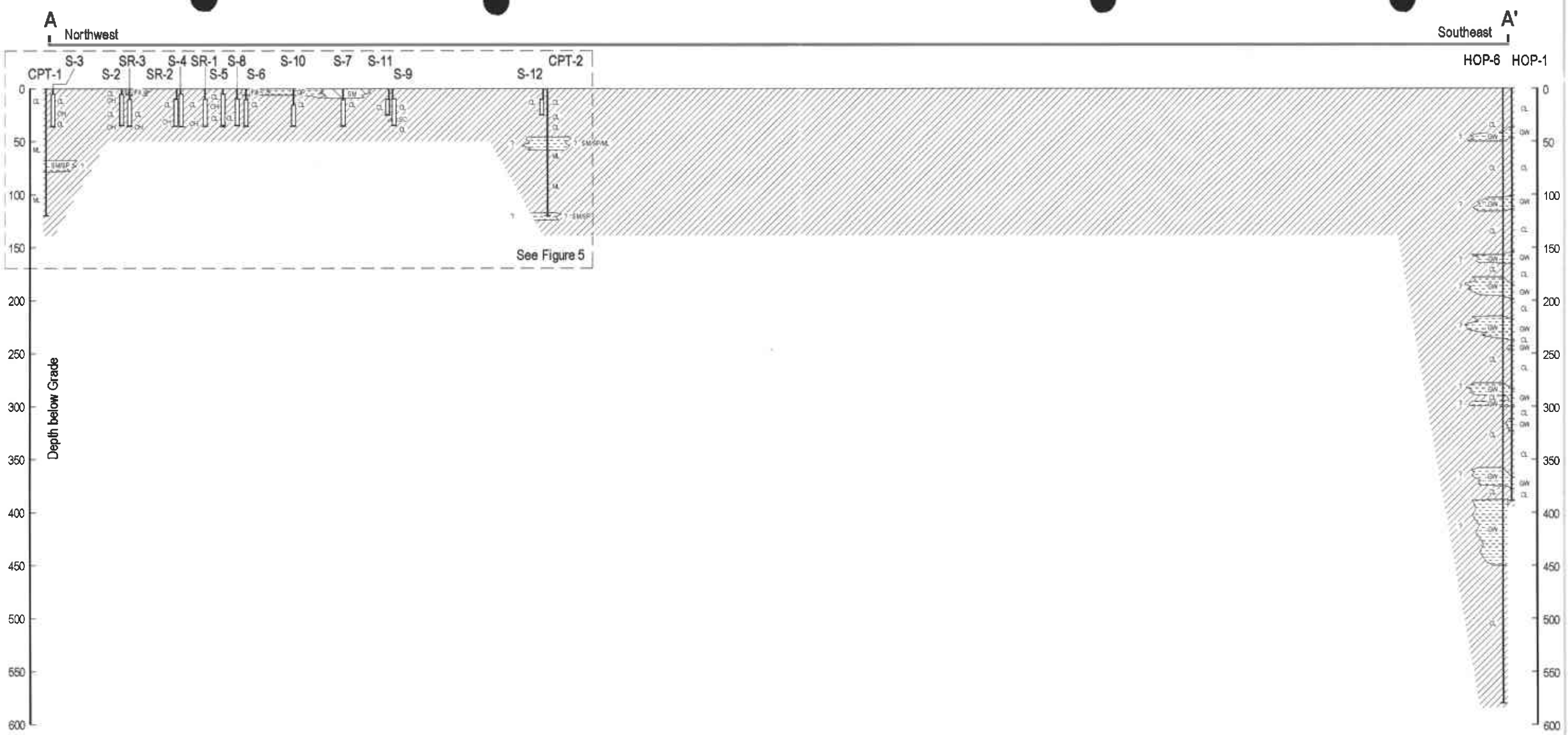


FIGURE
3

© 2014 CAMBRIDGE CONSULTING ENGINEERS, INC.

G:\PLEASANTON\3790 HOPYARD\FIGURE\SECTION A.DWG



EXPLANATION	
	= Low Permeability Soils CL, ML, CH
	= Moderate Permeability Soils SM, SC
	= High Permeability Soils GW, GP, SP
	= Fill (Tank Pit)
	S-2 Well / Boring ID
	Groundwater Monitoring Well
	Well Screen Interval
	Bottom of boring
	CH = Inorganic Clay
	CL = Clay
	GP = Poorly Graded Gravel
	GW = Well Graded Gravel
	ML = Clayey Silt
	SC = Clayey Sand
	SM = Silty Sand
	SP = Poorly Graded Sand

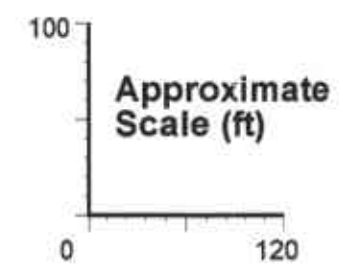
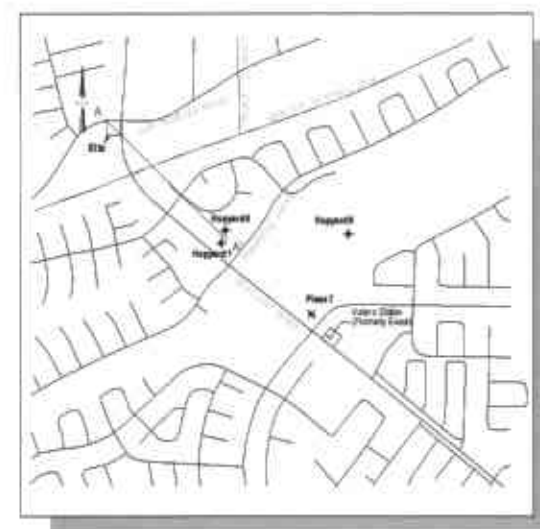


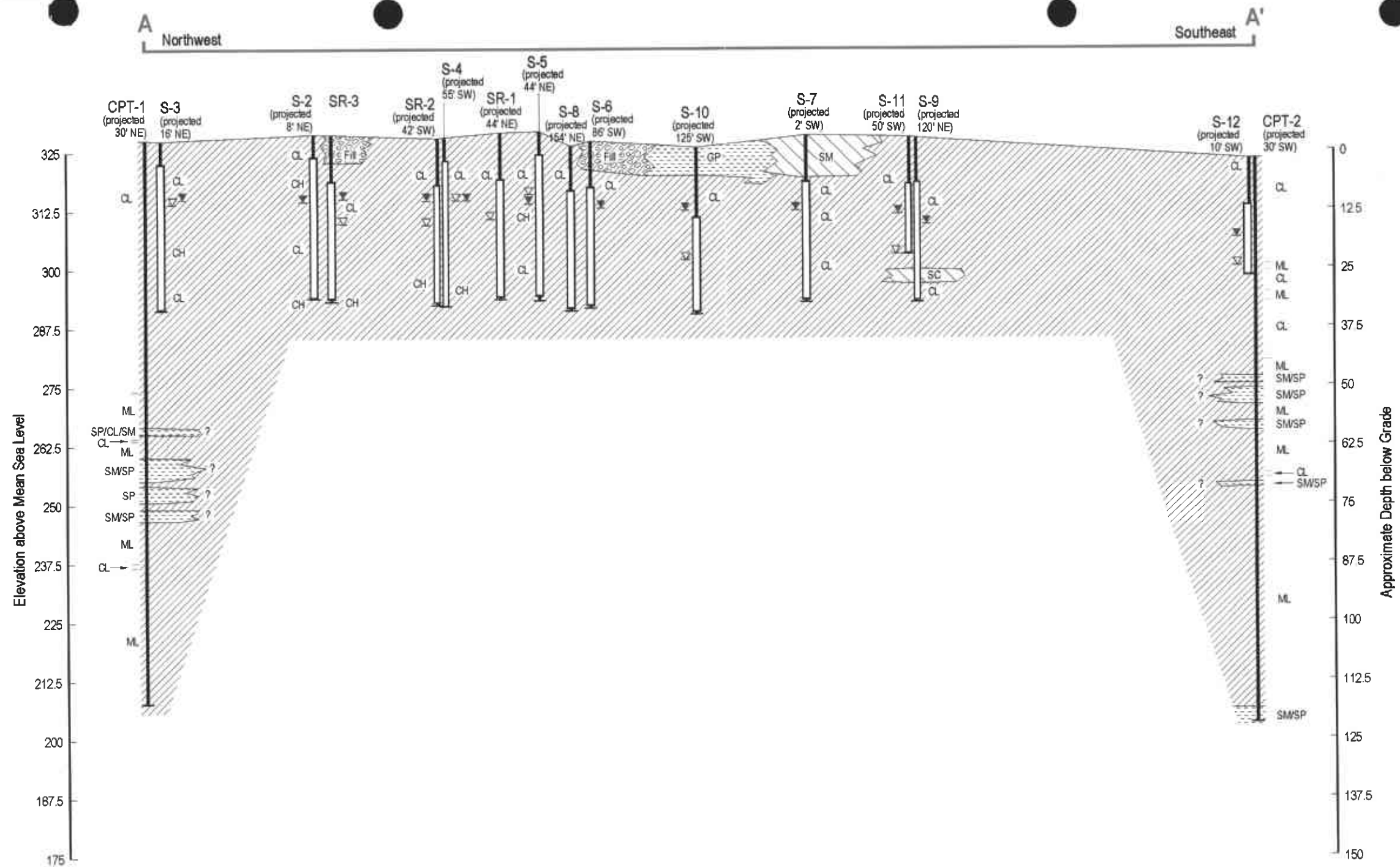
FIGURE 4

Geologic Cross Section A - A'



Shell-branded Service Station

3790 Hopyard Road
Pleasanton, California
Incident #98995842



EXPLANATION

	= Low Permeability Soils CL, ML, CH		S-2 Well / Boring ID		CH = Inorganic Clay
	= Moderate Permeability Soils SM, SC		Groundwater Monitoring Well		CL = Clay
	= High Permeability Soils GW, GP, SP		Well Screen Interval		GP = Poorly Graded Gravel
	= Fill		Bottom of boring		GW = Well Graded Gravel
			Initial Groundwater depth		ML = Clayey Silt
			Depth of Groundwater on December 27, 2002		SC = Clayey Sand
					SM = Silty Sand
					SP = Poorly Graded Sand

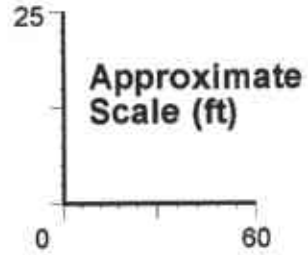


FIGURE
5

6:\PLEASANTON\3790 HOPYARD\FIGURES\SECTION A-A.DWG