

Trumark Homes

6375 Clark Avenue, Suite 205

Dublin, CA 94568

(510) 829-7140

Fax (510) 829-7144

406-7809 cellular

FAX TRANSMISSION

To: Scott Seery
Alameda County Health

Date: 3/26/97

Fax #: 337-9335

Pages to Follow: 4

From: Gregg Nelson

Fax #: (510) 829-7144

Re: Ray Street Site

Remarks:

I hope you can piece this together. Sorry, I didn't have a reduced copy. The project as currently proposed consists of approximately 6,700 sf of office (one story over parking) and 30 small lot detached homes, all on about 3.2 acres. The office building will probably be shifted down (East) from where it now shows but the houses shouldn't change.

I tried to locate the former tank site based on the HK2 layout.

Thanks for your help.

- now early in planning stages of project
- probably 9-10 months away from ground breaking
- access to adj; site probably not a problem

SCALE 1" = 20'
 REDUCED BY 77%
 SO ACTUAL SCALE
 IS MORE LIKE 1" = 26'

172.53'

Ray

Street

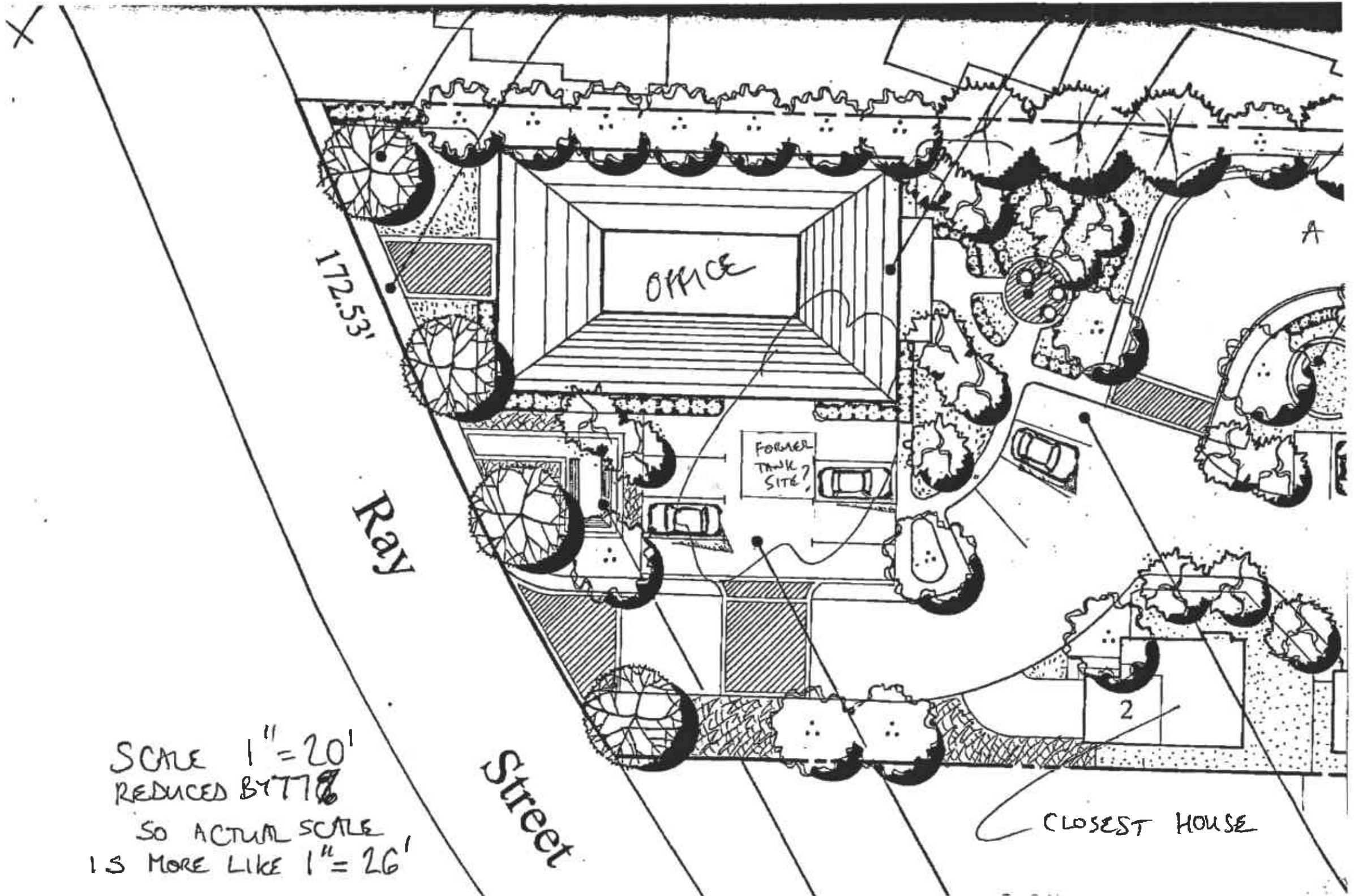
OFFICE

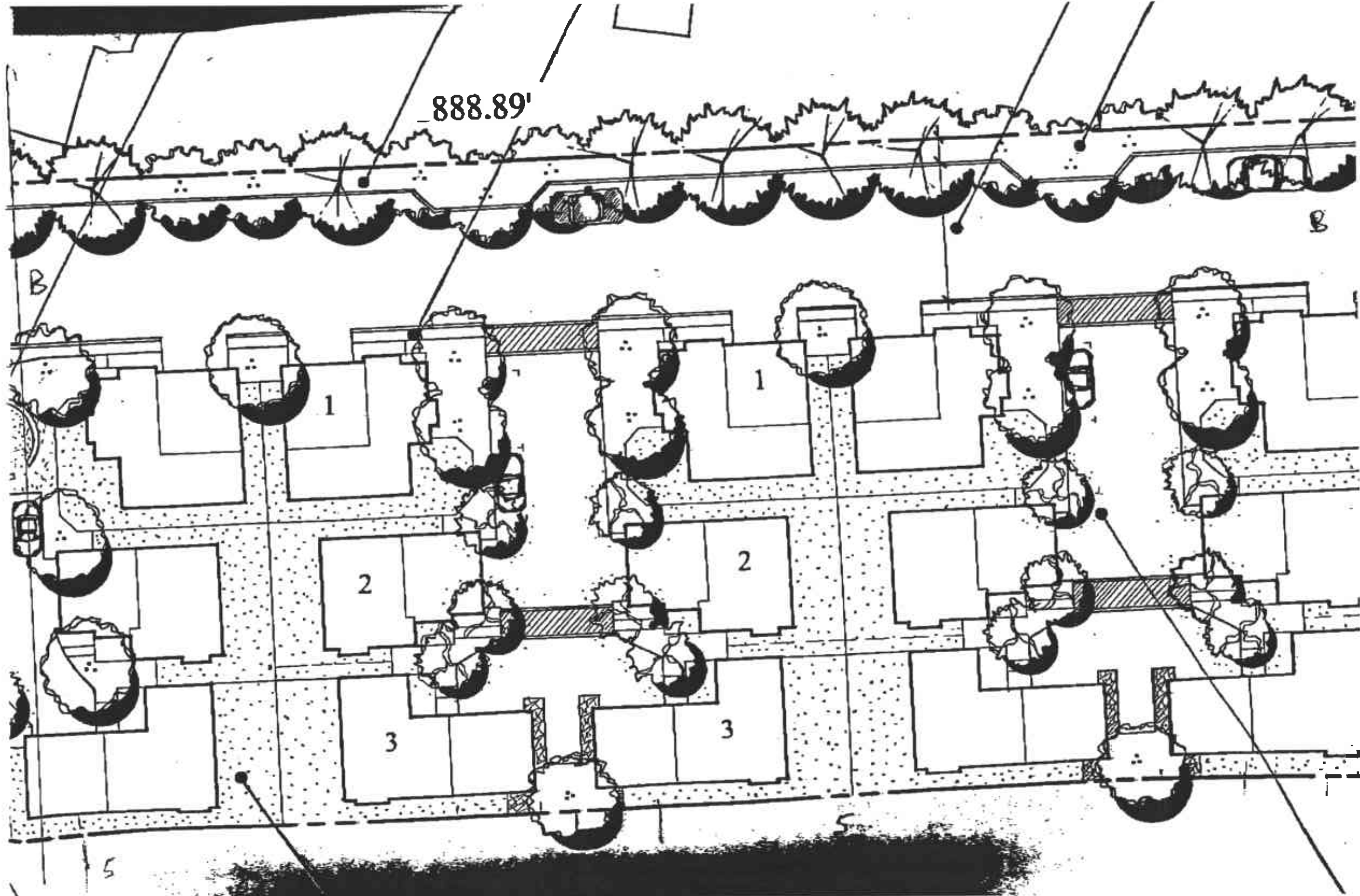
FORMER
 TRUCK
 SITE?

2

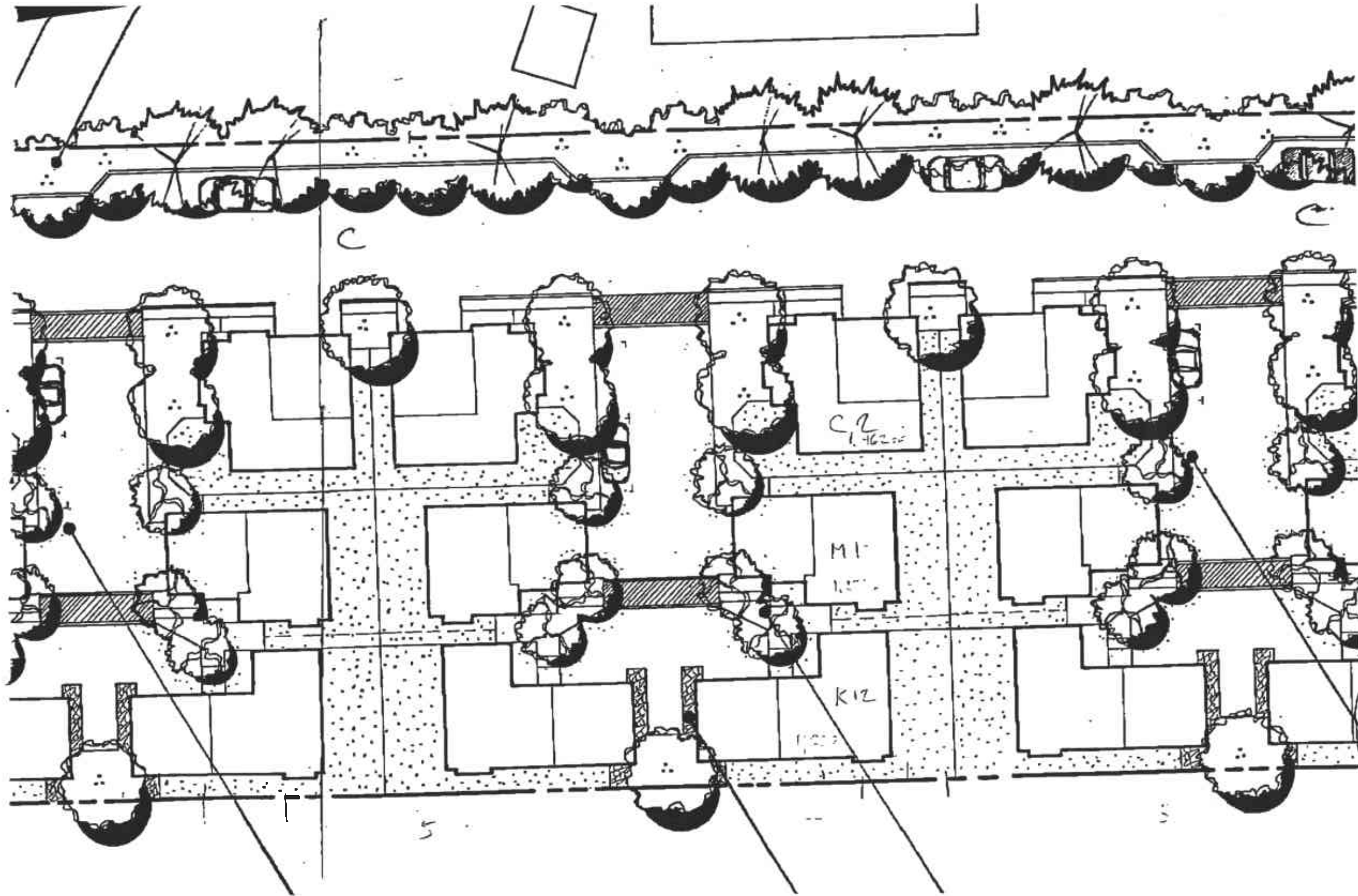
CLOSEST HOUSE

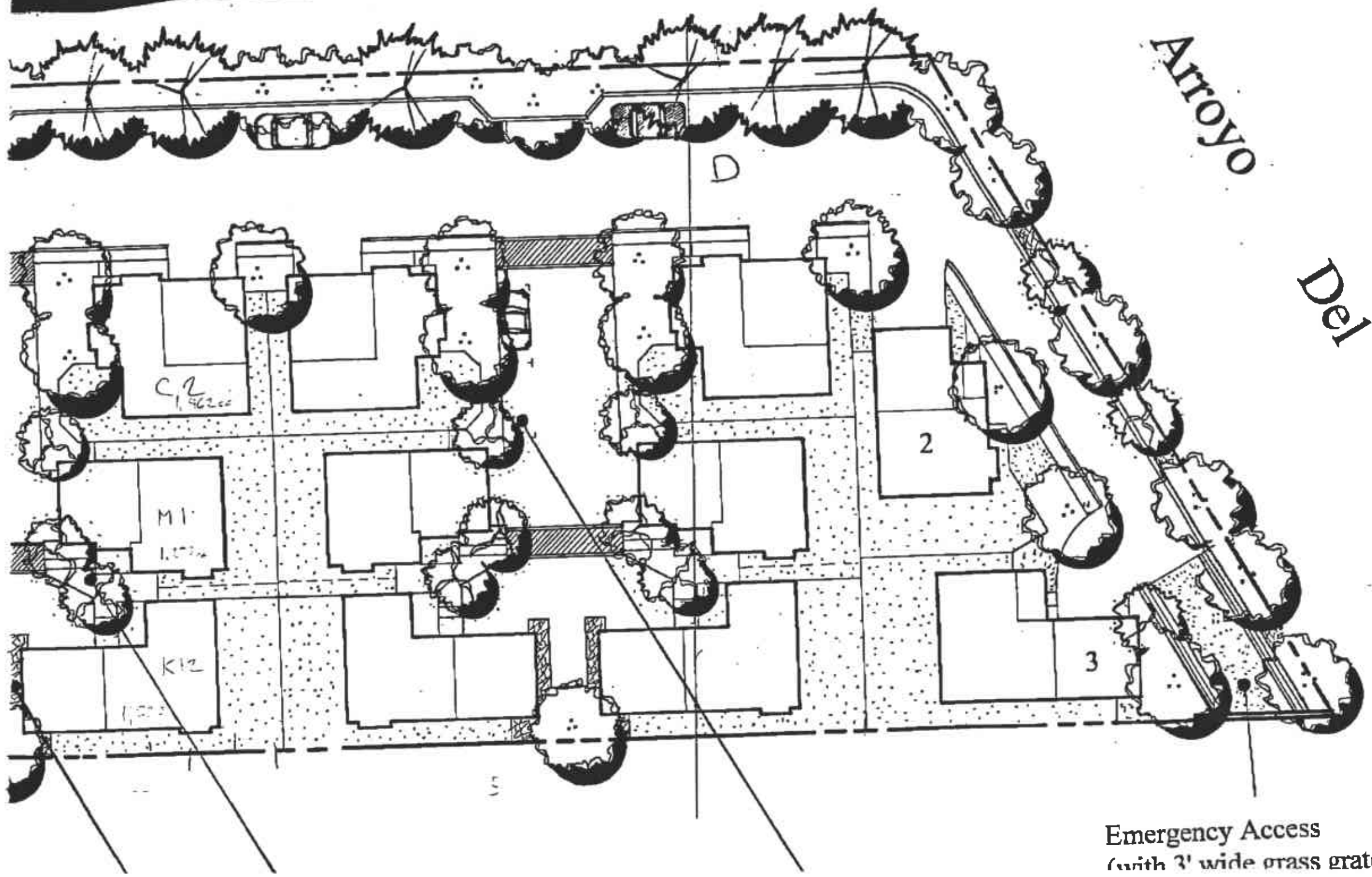
A





5





Emergency Access
(with 3' wide grass grate bar)