

RECEIVED

8:56 am, Jul 29, 2009

Alameda County
Environmental Health

SOMA
ENVIRONMENTAL ENGINEERING, INC.
6620 Owens Drive, Suite A • Pleasanton, CA 94588
TEL (925)734-6400 • FAX (925)734-6401
www.somaenv.com

July 24, 2009

Mr. Paresh Khatri
Alameda County Health Care Services Agency
1131 Harbor Bay Parkway, Suite 250
Alameda, California 94502-6577

Subject: **#RO0000346**

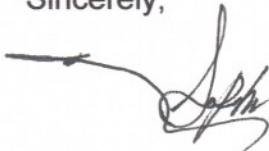
Site Address: 3519 Castro Valley Boulevard, Castro Valley, CA
Castro Valley Gasoline Service Station

Dear Mr. Khatri:

SOMA's "Third Quarter 2009 Groundwater Monitoring Report" for the subject property has been uploaded to the State GeoTracker database and Alameda County's FTP site for your review.

Thank you for your time in reviewing our report. If you have any questions or comments, please call me at (925) 734-6400.

Sincerely,



Mansour Sepehr, Ph.D., PE
Principal Hydrogeologist



Enclosure

cc: Mr. Mirazim Shakoori w/enclosure
Mr. Matt Herrick – Broadbent & Associates, Inc. w/enclosure

**Third Quarter 2009
Groundwater Monitoring Report**

**Castro Valley Chevron
3519 Castro Valley Boulevard
Castro Valley, California**

July 24, 2009

Project 2761

**Prepared for
Mr. Mirazim Shakoori
3519 Castro Valley Boulevard
Castro Valley, California 94546**



ENVIRONMENTAL ENGINEERING, INC.

6620 Owens Drive Suite A Pleasanton CA 94588 Ph: 925.734.6400 F: 925.734-6401 www.somaenv.com

CERTIFICATION

SOMA Environmental Engineering, Inc. has prepared this report for the County of Fresno, Department of Public Works and Planning in accordance with Agreement No. P-09-049-F to comply with Waste Discharge Requirements Order No. R5-2002-0199 issued by California Regional Water Quality Control Board, Central Valley Region.



Mansour Sepehr, PhD, PE
Principal Hydrogeologist

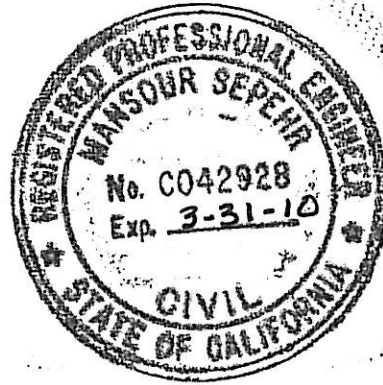


TABLE OF CONTENTS

CERTIFICATION	i
TABLE OF CONTENTS.....	ii
LIST OF TABLES.....	iii
LIST OF FIGURES	iii
LIST OF APPENDICES	iii
1. INTRODUCTION	1
1.1 Overview	1
1.2 Summary of Field Activities and Laboratory Analysis.....	1
1.2.1 Field Activities	1
1.2.2 Laboratory Analysis.....	2
2. RESULTS	2
2.1 Field Measurements.....	2
2.2 Laboratory Analyses	2
3. CONCLUSIONS AND RECOMMENDATIONS.....	4
3.1 Conclusions	4
3.2 Recommendation.....	4
4. MONITORING SCHEDULE	4

LIST OF TABLES

- Table 1: Historical Groundwater Elevations and Analytical Data
TPH-g, BTEX, and MtBE
- Table 2: Historical Groundwater Analytical Data, Gasoline Oxygenates and
Lead Scavengers

LIST OF FIGURES

- Figure 1: Site Vicinity Map
- Figure 2: Site Map Showing Locations of Existing Monitoring Wells,
Decommissioned Wells, Off-site Temporary Well Boreholes,
Monitoring Wells Installed by SOMA, and Monitoring Wells Located
at Neighboring Service Station
- Figure 3: Groundwater Elevation Contour Map in Feet. July 7, 2009
- Figure 4: Map of TPH-g Concentrations in Groundwater. July 7, 2009
- Figure 5: Contour map of Benzene Concentrations in Groundwater
July 7, 2009
- Figure 6: Contour map of MtBE Concentrations in Groundwater (EPA Method
8260B). July 7, 2009
- Figure 7: Contour map of TBA Concentrations in Groundwater
July 7, 2009

LIST OF APPENDICES

- Appendix A: Standard Operating Procedures for Conducting Groundwater
Monitoring Activities
- Appendix B: Table of Elevations and Coordinates for Monitoring Wells and Field
Measurements of Groundwater Sample Properties for Third Quarter
2009
- Appendix C: Chain of Custody Form and Laboratory Report for the Third Quarter
2009 Monitoring Event
- Appendix D: Email from P&D Environmental Inc., (Consultants for Neighboring
Service Station at 3495 Castro Valley Blvd.)

1. INTRODUCTION

1.1 Overview

SOMA Environmental Engineering, Inc. (SOMA) has prepared this report on behalf of Mr. Mirazim Shakoori, property owner of the former BP gasoline service station located at 3519 Castro Valley Boulevard, Castro Valley, California. The site is located in an area of primarily residential and commercial properties (Figure 1).

This report summarizes results of the Third Quarter 2009 groundwater monitoring event conducted at the site on July 7, 2009. Included are laboratory analytical results for groundwater samples, and physical and chemical properties measured in the field for each groundwater sample including pH, temperature, and electrical conductivity (EC).

A joint monitoring event was conducted in coordination with the neighboring service station at 3459 Castro Valley Boulevard. However, this report does not include groundwater monitoring data and analytical results for the neighboring site as per correspondence from P&D Environmental Inc., dated September 24, 2008 (Appendix D).

1.2 Summary of Field Activities and Laboratory Analysis

1.2.1 Field Activities

On July 7, 2009, five on-site monitoring wells (ESE-1, ESE-2, ESE-5, MW-6, and SOMA-1) and four off-site monitoring wells (MW-7, SOMA-2, SOMA-3 and SOMA-4) were measured for depth to groundwater, and additional field measurements and grab groundwater samples were collected from all monitoring wells. Figure 2 shows well locations.

Top of casing elevation data and depth to groundwater in each monitoring well were used to calculate groundwater elevation. The top of casing elevation was based on an elevation datum of 56.33 feet NAVD88. Appendix B includes survey data.

Activities were performed in accordance with general guidelines of the California Regional Water Quality Control Board (CRWQCB) and Alameda County Environmental Health Services (ACEHS). Appendix A details standard procedures followed by SOMA during this monitoring event.

Purged groundwater from each well was stored on-site in one 55-gallon drum generated during this event.

1.2.2 Laboratory Analysis

Curtis & Tompkins, Ltd., a California state-certified laboratory, analyzed groundwater samples for the following: total petroleum hydrocarbons as gasoline (TPH-g); benzene, toluene, ethylbenzene, total xylenes (collectively termed BTEX); methyl tertiary-butyl ether (MtBE); gasoline oxygenates, and lead scavengers. All were prepared using EPA Method 5030B and analyzed using EPA Method 8260B.

2. RESULTS

Following are results of field measurements and laboratory analysis for the July 7, 2009 groundwater monitoring event.

2.1 Field Measurements

Table 1 presents calculated groundwater elevation and depth to groundwater in each monitoring well. Depths to groundwater ranged from 7.84 feet in ESE-5 to 11.01 feet in SOMA-1. Groundwater elevations ranged from 166.62 feet in SOMA-3 to 171.52 feet in MW-6. Table 1 also presents historical groundwater elevations in monitoring wells.

The groundwater elevation contour map is displayed in Figure 3. Groundwater flows southeasterly across the site at an approximate gradient of 0.015 feet/feet.

Since the previous monitoring event (Second Quarter 2009), the groundwater flow direction has remained the same and gradient has slightly increased. Refer to Table 1 for detailed historical groundwater elevation trends.

2.2 Laboratory Analyses

Table 1 presents laboratory analytical results of groundwater samples for TPH-g, BTEX, and MtBE. Table 2 presents laboratory analytical results of groundwater samples for gasoline oxygenates and lead scavengers.

TPH-g was below the laboratory-reporting limit in groundwater samples from throughout the site except at wells ESE-1 and ESE-5, where it was detected at 850 µg/L and 2,700 µg/L, respectively. Figure 4 displays the map of TPH-g concentrations in groundwater. As illustrated, TPH-g has only minimally impacted groundwater throughout the site. Since the previous monitoring event (Second Quarter 2009), TPH-g has increased in ESE-5 and decreased in ESE-1.

The following BTEX analytes were observed during this monitoring event:

- In ESE-2, benzene was at a low level and all other BTEX analytes were below laboratory-reporting limits.
- In ESE-5, toluene and xylenes were below laboratory-reporting limits and benzene and ethylbenzene were at low levels.
- In SOMA-1, toluene was below the laboratory-reporting limit and all other BTEX analytes were at low levels.
- In MW-6 and off-site wells MW-7, SOMA-2, SOMA-3 and SOMA-4, all BTEX analytes were below laboratory-reporting limits.
- The highest BTEX concentrations were detected in ESE-1 at 89 µg/L, 1.9 µg/L, 7.8 µg/L, and 15.1 µg/L, respectively.

Figure 5 displays the contour map of benzene concentrations in groundwater. As illustrated, benzene has only minimally impacted groundwater throughout the site. Since the previous monitoring event (Second Quarter 2009), benzene has decreased in ESE-1 and ESE-5 and slightly increased in ESE-2 and SOMA-1.

MtBE was below the laboratory-reporting limit in MW-6 and SOMA-2. Detectable MtBE concentrations ranged from 6 µg/L in SOMA-3 to 32 µg/L in ESE-2. Figure 6 displays the contour map of MtBE concentrations in groundwater. The MtBE plume has migrated off-site; however, only trace concentrations were detected in off-site wells.

The following gasoline oxygenate and lead scavenger analytes were observed during this monitoring event.

- Isopropyl ether (DIPE), ethyl tertiary-butyl ether (ETBE), ethanol, 1,2-dichloroethane (1,2-DCA), and 1,2-dibromoethane (EDB) were below laboratory-reporting limits in all groundwater samples.
- Tertiary-amyl methyl ether (TAME) was detected at 0.56 µg/L in ESE-2 and was below the laboratory-reporting limit in other groundwater samples.
- Tertiary-butyl alcohol (TBA) was the most dominant gasoline oxygenate analyte detected during this monitoring event, and was found in wells ESE-1, ESE-2, and SOMA-1 at 100 µg/L, 18 µg/L, and 250 µg/L, respectively. It was below the laboratory-reporting limit in all other tested wells.

Figure 7 displays the contour map of TBA concentrations in groundwater. As illustrated, TBA has only minimally impacted groundwater throughout the site.

Refer to Tables 1 and 2 for detailed historical concentration trends. Appendix C includes the laboratory report and chain of custody form for the Second Quarter 2009 monitoring event.

3. CONCLUSIONS AND RECOMMENDATIONS

3.1 Conclusions

Conclusions based on the Third Quarter 2009 groundwater monitoring event are summarized as follows:

- The groundwater flow direction has remained southeasterly across the site.
- In general, both the MtBE and TBA plumes appear to be centrally located in the southeastern section of the site. TBA is formed in the environment through oxidation of MtBE in the atmosphere followed by hydrolysis or through microbial oxidation of MtBE in impacted aquifer materials. Locations of the MtBE and TBA plumes can be attributed to the south-to-southeasterly groundwater flow direction across the site from the former UST cavity.
- Due to its high mobility, MtBE has migrated off-site. However, in the northern section of the site, at MW-6, all tested constituents were at non-detectable levels.
- TPH-g was detected at 2,700 µg/L in ESE-5, where there was once a source area, and has increased since the previous monitoring event (Second Quarter 2009); other tested constituents (BTEX, MtBE, and gasoline oxygenates) were at low or non-detectable levels.

3.2 Recommendation

- Based on results of this monitoring event, SOMA will continue groundwater monitoring at the site on a semi-annual basis, during first and third quarters, as suggested by ACEHS directive dated July 10, 2009.

Other ongoing activities: Based on ACEHS approval dated July 10, 2009, SOMA will implement the workplan to address data gaps and results will be presented in the soil and groundwater investigation report.

4. MONITORING SCHEDULE

The next joint monitoring event for the site will be conducted during First Quarter 2010.

Tables

Table 1
Historical Groundwater Elevations & Analytical Data
TPH-g, BTEX, MtBE
3519 Castro Valley Blvd, Castro Valley, CA

Monitoring Well	Date	Top of casing elevation ¹ (feet)	Depth to Groundwater (feet)	Groundwater Elevation (feet)	TPH-g (µg/L)	Benzene (µg/L)	Toluene (µg/L)	Ethyl benzene (µg/L)	Total Xylenes (µg/L)	MtBE (µg/L) 8260B
ESE-1	10/5/1992	177.69	11.22	166.47	2100	370	150	17	110	NA
	10/5/1992	177.69	NM	NM	2300	370	160	16	110	NA
	4/1/1993	177.69	8.79	168.90	5900	1500	410	110	390	NA
	6/29/1993	177.69	10.34	167.35	7600	2900	390	130	460	NA
	9/23/1993	177.69	10.91	166.78	2000	490	40	20	56	600
	9/23/1993	177.69	NM	NM	1500	420	39	19	56	550
	12/10/1993	177.69	9.93	167.76	1800	480	42	19	66	921
	12/10/1993	177.69	NM	NM	1500	380	38	17	55	770
	2/17/1994	177.69	9.64	168.05	1900	380	48	24	80	585
	2/17/1994	177.69	NM	NM	2200	430	42	19	65	491
	8/8/1994	177.69	11.72	165.97	2100	450	46	16	50	760
	10/12/1994	177.69	10.48	167.21	760	240	16	51	39	230
	1/19/1995	177.69	7.77	169.92	840	600	120	22	58	NA
	5/2/1995	177.69	8.69	169.00	2000	640	67	24	98	NA
	7/28/1995	177.69	10.12	167.57	190	<0.50	<0.50	<0.50	<1.0	NA
	11/17/1995	177.69	10.57	167.12	200	3.4	<1.0	1	<2.0	600
	2/7/1996	177.69	7.41	170.28	750	370	23	21	64	680
	4/23/1996	177.69	9.12	168.57	310	100	<1.0	<1.0	<1.0	1500
7/9/1996	177.69	10.12	167.57	730	230	74	13	63	750	
10/10/1996	177.69	10.80	166.89	420	26	1.6	7.3	12	430	

Table 1
Historical Groundwater Elevations & Analytical Data
TPH-g, BTEX, MtBE
3519 Castro Valley Blvd, Castro Valley, CA

Monitoring Well	Date	Top of casing elevation ¹ (feet)	Depth to Groundwater (feet)	Groundwater Elevation (feet)	TPH-g (µg/L)	Benzene (µg/L)	Toluene (µg/L)	Ethyl benzene (µg/L)	Total Xylenes (µg/L)	MtBE (µg/L) 8260B
ESE-1 cont.	1/20/1997	177.69	10.52	167.17	660	290	4.2	13	36	450
	4/25/1997	177.69	9.77	167.92	410	<0.5	<1.0	<1.0	<1.0	580
	7/18/1997	177.69	10.55	167.14	420	<0.5	<1.0	<1.0	<1.0	370
	10/27/1997	177.69	10.36	167.33	300	56	<1.0	6.5	<1.0	220
	1/22/1998	177.69	7.52	170.17	4200	440	9	15	17.7	1300
	4/23/1998	177.69	8.80	168.89	15000	3400	190	910	900	4900
	4/23/1998	177.69	NM	NM	15000	2800	140	730	730	4400
	7/29/1998	177.69	9.73	167.96	NA	NA	NA	NA	NA	NA
	7/30/1998	177.69	NM	NM	15000	<2.5	<5.0	<5.0	<5.0	15000
	12/17/1998	177.69	9.51	168.18	2400	73	1	2.8	4.6	2000
	3/19/1999	177.69	8.65	169.04	4700	58	<1.0	<1.0	<1.0	4700
	6/23/1999	177.69	10.51	167.18	600	170	<1.0	7.2	5	3900
	9/27/1999	177.69	10.32	167.37	920	200	<25	<25	<25	4900
	12/9/1999	177.69	10.24	167.45	460	130	1.2	5.2	1.5	5100
	3/9/2000	177.69	7.72	169.97	3000	1300	120	80	140	7300
	6/8/2000	177.69	9.40	168.29	2900	540	9.7	20	17	5200
	9/18/2000	177.69	10.05	167.64	890	3.4	<0.5	1.4	<0.5	2800
	12/14/2000	177.69	8.20	169.49	1600	11.1	<0.5	<0.5	<0.5	2730
	3/21/2001	177.69	9.75	167.94	5700	2.28	<0.5	0.51	<1.5	6810
	6/18/2001	177.69	10.21	167.48	2000	152	0.669	3.62	2.34	1980
	9/18/2001	177.69	10.30	167.39	2500	57.1	<5.0	6.25	<15	2090
	12/13/2001	177.69	9.82	167.87	2800	208	6.05	8.54	9.66	2030
	3/14/2002	177.69	9.10	168.59	1800	140	6.31	4.5	9.41	1970
	6/19/2002	177.69	9.92	167.77	1100	220	2.02	4.23	3.8	1280
9/10/2002	177.69	10.21	167.48	490	39	2.9	<2.0	4.9	670	
12/16/2002	177.69	8.56	169.13	730	140	6	3.2	9.1	670	

Table 1
Historical Groundwater Elevations & Analytical Data
TPH-g, BTEX, MtBE
3519 Castro Valley Blvd, Castro Valley, CA

Monitoring Well	Date	Top of casing elevation ¹ (feet)	Depth to Groundwater (feet)	Groundwater Elevation (feet)	TPH-g (µg/L)	Benzene (µg/L)	Toluene (µg/L)	Ethyl benzene (µg/L)	Total Xylenes (µg/L)	MtBE (µg/L) 8260B
ESE-1 cont.	3/11/2003	177.69	9.40	168.29	1700	490	21	22	41	530
	6/17/2003	177.69	9.86	167.83	1300	140	<10	<10	<10	480
	12/9/2003	177.69	9.32	168.37	1400	390	12	14	26.1	260
	2/26/2004	177.69	7.71	169.98	3200	880	50	44	89	200
	5/21/2004	177.69	10.19	167.50	1500	370	10	14	25.2	140
	8/10/2004	180.24	10.41	169.83	460	390	7	8.1	15.4	110
	10/19/2004	180.24	10.40	169.84	1600	490	13	12	25.3	110
	1/14/2005	180.24	8.26	171.98	790 Z	420	26	19	52	91
	4/14/2005	180.24	8.77	171.47	3020	766	25.6	21.3	25.26	88.2
	7/7/2005	180.24	9.94	170.30	1940	440	15.5	15.7	21	80.6
	11/15/2005	180.24	10.21	170.03	1260	259	6.2	8.2	10.81	45.8
	2/8/2006	180.24	9.01	171.23	1430	332	13.6	18.1	25.03	43
	4/27/2006	180.24	9.14	171.10	1,600	519	23.2	32.4	40.20	63.4
	8/1/2006	180.24	9.92	170.32	1,530	395	11.8	25.4	28.01	40
	10/19/2006	180.24	10.34	169.90	1,230	327	10.2	21.6	21.19	29.6
	1/12/2007	180.24	9.84	170.40	561	153	7.18	14.4	14.95	30.9
	4/17/2007	180.24	9.78	170.46	467	192	7.59	13.8	16.42	30.4
	7/17/2007	180.24	9.82	170.42	755	271	8.6	17.8	22.06	26.7
	10/16/2007	180.24	8.99	171.25	164	80.2	<2.0	5.24	2.47	16.6
	1/17/2008	180.24	9.35	170.89	70	10.8	<2.0	<0.50	<2.0	19.3
	4/17/2008	180.24	9.80	170.44	687	89.7	<2.0	4.01	5.30	8.79
	7/16/2008	180.24	10.17	170.07	1,400	223	3.88	12.6	17.88	18.1
	10/14/2008	180.24	10.86	169.38	540	95	2.7	7.7	18	15
1/6/2009	180.24	10.10	170.14	500 ^Y	130	3	8.8	17.1	13	
4/6/2009	180.24	10.05	170.19	910 ^Y	230	2.4	11	12.1	17	
7/7/2009	180.24	10.42	169.82	850^Y	89	1.9	7.8	15.1	15	

Table 1
Historical Groundwater Elevations & Analytical Data
TPH-g, BTEX, MtBE
3519 Castro Valley Blvd, Castro Valley, CA

Monitoring Well	Date	Top of casing elevation ¹ (feet)	Depth to Groundwater (feet)	Groundwater Elevation (feet)	TPH-g (µg/L)	Benzene (µg/L)	Toluene (µg/L)	Ethyl benzene (µg/L)	Total Xylenes (µg/L)	MtBE (µg/L) 8260B
ESE-2	10/5/1992	178.23	11.68	166.55	300	5.4	16	3.9	45	NA
	4/1/1993	178.23	9.17	169.06	240	27	<0.5	17	2.6	123
	6/29/1993	178.23	10.88	167.35	1,700	260	24	110	23	NA
	6/29/1993	178.23	NM	NM	1,300	240	17	110	25	NA
	9/23/1993	178.23	11.56	166.67	240	3.1	0.5	0.6	2.5	643
	12/10/1993	178.23	10.48	167.75	250	2.4	2.4	1.5	11	940
	2/17/1994	178.23	10.06	168.17	900	<0.5	<0.5	<0.5	<0.5	930
	8/8/1994	178.23	11.11	167.12	750	<0.5	<0.5	<0.5	<0.5	1400
	10/12/1994	178.23	11.31	166.92	1,700	<0.5	<0.5	<0.5	<0.5	3000
	1/19/1995	178.23	8.25	169.98	300	2	0.9	0.7	1	NA
	5/2/1995	178.23	9.21	169.02	1,200	4	<2.5	<2.5	<5	NA
	7/28/1995	178.23	10.64	167.59	2,000	<2.5	<2.5	<2.5	<5	NA
	11/17/1995	178.23	11.13	167.10	3,600	<25	<25	<25	<50	12000
	11/17/1995	178.23	NM	NM	3,400	<25	<25	<25	<50	12000
	2/7/1996	178.23	7.94	170.29	450	<0.5	<1	<1	<1	2300
	4/23/1996	178.23	9.73	168.50	260	0.9	<1	<1	<1	8600
	7/9/1996	178.23	10.70	167.53	780	<2.5	<5	<5	<5	13393
	10/10/1996	178.23	11.39	166.84	2,900	<0.5	<1	<1	<1	12000
	1/20/1997	178.23	9.04	169.19	<250	<2.5	<5	<5	<5	13000
	4/25/1997	178.23	10.31	167.92	2,700	<0.5	<1	<1	<1	15000
	7/18/1997	178.23	11.02	167.21	11,000	<5	<10	<10	<10	11000
	10/27/1997	178.23	10.93	167.30	6,100	<2.5	<5.0	<5.0	<5.0	7100
	10/27/1997	178.23	NM	NM	6,600	<2.5	<5.0	<5.0	<5.0	7400
	1/22/1998	178.23	7.93	170.30	13,000	<0.5	<1	<1	<1	10000
	1/22/1998	178.23	NM	NM	13,000	<0.5	<1	<1	<1	10000
	4/23/1998	178.23	9.34	168.89	19,000	<5	<10	<10	<10	36000
	7/29/1998	178.23	10.29	167.94	NA	NA	NA	NA	NA	NA
	7/30/1998	178.23	NM	NM	19,000	<5	<10	<10	<10	36000
12/17/1998	178.23	10.20	168.03	12,000	<5	<5	<5	<5	13000	

Table 1
Historical Groundwater Elevations & Analytical Data
TPH-g, BTEX, MtBE
3519 Castro Valley Blvd, Castro Valley, CA

Monitoring Well	Date	Top of casing elevation ¹ (feet)	Depth to Groundwater (feet)	Groundwater Elevation (feet)	TPH-g (µg/L)	Benzene (µg/L)	Toluene (µg/L)	Ethyl benzene (µg/L)	Total Xylenes (µg/L)	MtBE (µg/L) 8260B
ESE-2 cont	3/19/1999	178.23	9.02	169.21	18,000	160	<1	<1	<1	18000
	6/23/1999	178.23	9.99	168.24	280	<1	<1	<1	<1	16000
	9/27/1999	178.23	10.69	167.54	<500	<25	<25	<25	<25	12000
	12/9/1999	178.23	11.26	166.97	<50	<0.3	<0.3	<0.3	<0.6	12000
	3/9/2000	178.23	7.95	170.28	<50	1.6	<0.5	<0.5	<0.5	7900
	6/8/2000	178.23	9.66	168.57	1,600	<0.5	0.73	<0.5	2.2	9400
	12/14/2000	178.23	11.15	167.08	6,000	0.75	<0.5	<0.5	<0.5	11200
	3/21/2001	178.23	10.35	167.88	6,900	786	45.7	37.7	71.5	3790
	6/18/2001	178.23	11.24	166.99	6,400	<2.5	<2.5	<2.5	<7.5	9320
	9/18/2001	178.23	11.35	166.88	4,800	<12.5	<12.5	<12.5	<37.5	6960
	12/13/2001	178.23	10.97	167.26	59,000	0.592	<0.5	<0.5	<1	5940
	3/14/2002	178.23	10.13	168.10	4,500	76	<0.5	<0.5	<1	6660
	6/19/2002	178.23	10.91	167.32	250	<12.5	<12.5	<12.5	<25	4900
	9/10/2002	178.23	10.82	167.41	1,500	<5	<5	<5	6.3	3100
	12/16/2002	178.23	7.87	170.36	1,400	<5	<5	<5	<5	2400
	3/11/2003	178.23	10.24	167.99	2,800	<10	<10	<10	<10	4800
	6/17/2003	178.23	10.19	168.04	10,000	<100	<100	<100	<100	4400
	12/9/2003	178.23	9.97	168.26	<50	<0.5	<0.5	<0.5	<0.5	3400
	2/26/2004	178.23	7.89	170.34	<50	<0.5	<0.5	<0.5	<0.5	3000
	5/21/2004	178.23	10.70	167.53	<50	<0.5	<0.5	<0.5	<0.5	1100
	8/10/2004	180.79	10.99	169.80	<50	<0.5	<0.5	<0.5	<0.5	550
	10/19/2004	180.79	10.46	170.33	<50	<0.5	<0.5	<0.5	<0.5	410
	1/14/2005	180.79	8.66	172.13	<50	<8.3	<8.3	<8.3	<8.3	1200
	4/14/2005	180.79	9.38	171.41	<860	<2.15	<2.15	<2.15	<4.30	1020
	7/7/2005	180.79	10.46	170.33	<860	<2.15	<8.60	<2.15	<4.30	378
	11/15/2005	180.79	10.55	170.24	<50	<0.5	<2.0	<0.5	<1.0	210
	2/8/2006	180.79	9.46	171.33	<215	<2.15	<8.6	<2.15	<4.3	419
	4/27/2006	180.79	10.67	170.12	<100	1.71	<4.0	<1.0	<2.0	432
	8/1/2006	180.79	10.29	170.50	<100	2.83	<4.0	<1.0	<2.0	222
	10/19/2006	180.79	10.65	170.14	<50	0.8	<2.0	<0.5	<1.0	221

Table 1
Historical Groundwater Elevations & Analytical Data
TPH-g, BTEX, MtBE
3519 Castro Valley Blvd, Castro Valley, CA

Monitoring Well	Date	Top of casing elevation ¹ (feet)	Depth to Groundwater (feet)	Groundwater Elevation (feet)	TPH-g (µg/L)	Benzene (µg/L)	Toluene (µg/L)	Ethyl benzene (µg/L)	Total Xylenes (µg/L)	MtBE (µg/L) 8260B	
ESE-2 cont	1/12/2007	180.79	NM	NM	NA	NA	NA	NA	NA	NA	
	4/17/2007	180.79	10.20	170.59	<50	3.17	<2.0	4.49	<2.0	158	
	7/17/2007	180.79	10.31	170.48	<50	1.65	<2.0	<0.5	<2.0	105	
	10/16/2007	180.79	9.22	171.57	<50	5.67	<2.0	<0.5	<2.0	73.9	
	1/17/2008	180.79	9.88	170.91	<50.0	<0.50	<2.0	<0.50	<2.0	80.2	
	4/17/2008	180.79	10.29	170.50	<50	<0.5	<2.0	<0.5	<2.0	45	
	7/16/2008	180.79	10.64	170.15	<50	<0.5	<2.0	<0.5	<2.0	54	
	10/14/2008	180.79	11.41	169.38	<50	<0.5	<0.5	<0.5	<0.5	41	
	1/6/2009	180.79	10.60	170.19	<50	<0.5	<0.5	<0.5	<0.5	36	
	4/6/2009	180.79	10.62	170.17	<50	<0.5	<0.5	<0.5	<0.5	30	
	7/7/2009	180.79	10.92	169.87	<50	2.4	<0.5	<0.5	<0.5	32	
	ESE-3	10/5/1992	178.20	10.58	167.62	430	57	31	3.6	34	NA
4/1/1993		178.20	8.14	170.06	2400	460	220	74	210	NA	
6/29/1993		178.20	9.72	168.48	280	56	14	15	13	NA	
9/23/1993		178.20	10.46	167.74	72	13	3.5	1.7	4.1	NA	
12/10/1993		178.20	9.30	168.90	270	71	32	6.1	33	NA	
2/17/1994		178.20	8.97	169.23	520	140	10	20	33	5.74	
8/8/1994		178.20	10.02	168.18	<50	8.8	1.6	1.6	2.3	<5.0	
10/12/1994		178.20	10.32	167.88	470	190	6.4	15	18	<5.0	
1/19/1995		178.20	7.40	170.80	330	260	27	21	20	NA	
5/2/1995		178.20	8.26	169.94	530	180	30	23	44	NA	
7/28/1995		178.20	9.54	168.66	<50	<0.50	<0.50	<0.50	<1	NA	
11/17/1995		178.20	10.04	168.16	<50	1.7	<0.50	<0.50	<1	<5.0	
2/7/1996		178.20	7.08	171.12	<50	8.6	<1	<1	<1	<10	
4/1/2396		178.20	8.79	169.41	<50	7.6	<1	<1	<1	65	
7/9/1996		178.20	10.09	168.11	<50	12	2.6	2	3.9	26	
10/10/1996	178.20	10.48	167.72	NA	NA	NA	NA	NA	NA		
10/11/1996	178.20	NM	NM	260	140	<1	<1	2.6	<10		

Table 1
Historical Groundwater Elevations & Analytical Data
TPH-g, BTEX, MtBE
3519 Castro Valley Blvd, Castro Valley, CA

Monitoring Well	Date	Top of casing elevation ¹ (feet)	Depth to Groundwater (feet)	Groundwater Elevation (feet)	TPH-g (µg/L)	Benzene (µg/L)	Toluene (µg/L)	Ethyl benzene (µg/L)	Total Xylenes (µg/L)	MtBE (µg/L) 8260B
ESE-3 cont.	1/20/1997	178.20	8.65	169.55	<50	1.5	1.7	<1	<1	14
	4/25/1997	178.20	10.02	168.18	<50	<0.5	<1	<1	<1	14
	7/18/1997	178.20	10.66	167.54	10000	1400	1400	300	1280	<250
	10/27/1997	178.20	9.83	168.37	<250	<2.5	<5.0	<5.0	36	<50
	1/22/1998	178.20	7.06	171.14	130	<0.5	<1.0	<1.0	<1.0	120
	4/23/1998	178.20	8.44	169.76	4800	560	<10	15	<10	4000
	7/29/1998	178.20	9.27	168.93	NA	NA	NA	NA	NA	NA
	7/30/1998	178.20	NM	NM	1800	6.2	<5.0	<5.0	<5.0	1700
	12/17/1998	178.20	9.15	169.05	600	54	<1.0	2.1	4.9	340/480
	3/19/1999	178.20	8.14	170.06	2000	260	4.4	13	28	870
	6/23/1999	178.20	9.44	168.76	290	91	<1.0	8.3	16	240
	9/27/1999	178.20	9.69	168.51	130	35	<1.0	2.7	3.8	100
	12/9/1999	178.20	10.99	167.21	380	84	1.7	8.7	6.3	160
	3/9/2000	178.20	7.12	171.08	950	190	4.6	39	62	350
	6/8/2000	178.20	10.92	167.28	300	37	<0.5	2.3	1.3	400
	9/18/2000	178.20	11.12	167.08	920	140	1.3	15	4.8	170
	12/14/2000	178.20	9.70	168.50	320	64	<0.5	6.24	1.76	201
	3/21/2001	178.20	10.07	168.13	680	80.5	0.546	21.1	18.2	398
	6/18/2001	178.20	11.42	166.78	380	47	<0.5	3.11	<1.5	242
	9/18/2001	178.20	11.55	166.65	340	54.8	<0.5	4.36	<1.5	79.7
	12/13/2001	178.20	10.12	168.08	270	31.4	<0.5	1.31	2.24	129
	3/14/2002	178.20	9.84	168.36	670	89.8	0.769	23.4	30.4	413
	6/19/2002	178.20	10.57	167.63	130	18.6	<0.5	<0.5	<1	166
	9/10/2002	178.20	9.90	168.30	88	12	<0.5	<0.5	<0.5	93
	12/16/2002	178.20	9.23	168.97	290	55	17	3.7	14	78
	3/11/2003	178.20	9.05	169.15	100	3.4	<0.5	0.54	<0.50	140
6/17/2003	178.20	9.30	168.90	520	17	<5	5.3	<5	130	

Table 1
Historical Groundwater Elevations & Analytical Data
TPH-g, BTEX, MtBE
3519 Castro Valley Blvd, Castro Valley, CA

Monitoring Well	Date	Top of casing elevation ¹ (feet)	Depth to Groundwater (feet)	Groundwater Elevation (feet)	TPH-g (µg/L)	Benzene (µg/L)	Toluene (µg/L)	Ethyl benzene (µg/L)	Total Xylenes (µg/L)	MtBE (µg/L) 8260B
ESE-4	10/5/1992	177.73	10.33	167.40	98	7.2	1.3	1.1	6.1	NA
	4/1/1993	177.73	7.88	169.85	550	93	20	23	33	NA
	6/29/1993	177.66	8.33	169.33	150	23	0.6	5.4	0.5	54
	9/23/1993	177.66	10.05	167.61	110	14	1.7	3.2	4.6	NA
	12/10/1993	177.66	8.95	168.71	110	21	7.2	4.2	10	28.75
	2/17/1994	177.66	8.65	169.01	210	26	1.2	4.7	11	113
	8/8/1994	177.66	9.76	167.90	76	9.6	<0.5	2	<0.5	62
	10/12/1994	177.66	9.62	168.04	<50	<0.5	<0.5	<0.5	<0.5	44
	1/19/1995	177.66	6.97	170.69	140	56	14	24	23	NA
	5/2/1995	177.66	7.85	169.81	130	21	2.8	8.6	8.2	NA
	7/28/1995	177.66	9.20	168.46	<50	<0.5	<0.5	<0.5	<1	NA
	11/17/1995	177.66	9.68	167.98	<50	<0.5	0.6	<0.5	<1	18
	2/7/1996	177.66	6.59	171.07	100	2.6	<1	1.6	4.1	42
	4/23/1996	177.66	8.30	169.36	160	37	15	16	31	43
	7/9/1996	177.66	9.21	168.45	60	17	1.5	6.8	11.6	27
	10/10/1996	177.66	9.97	167.69	NA	NA	NA	NA	NA	NA
	10/11/1996	177.66	NM	NM	<50	<0.5	<1.0	<1.0	<1.0	18
	1/20/1997	177.66	7.68	169.98	<50	<0.5	<1.0	<1.0	<1.0	130
	4/25/1997	177.66	9.15	168.51	<250	<2.5	<5.0	<5.0	<5.0	<50
	7/18/1997	177.66	9.71	167.95	<50	15	<10	<10	<10	<100
	10/27/1997	177.66	9.38	168.28	<250	<2.5	<5.0	<5.0	<5.0	<50
	1/22/1998	177.66	6.59	171.07	<50	<0.5	<1.0	<1.0	<1.0	<10
4/23/1998	177.66	7.90	169.76	<250	<2.5	<5.0	<5.0	<5.0	<50	
7/29/1998	177.66	8.96	168.70	NA	NA	NA	NA	NA	NA	
7/30/1998	177.66	NM	NM	<50	<0.5	<1.0	<1.0	<1.0	<10	
12/17/1998	177.66	8.32	169.34	NA	NA	NA	NA	NA	NA	

Table 1
Historical Groundwater Elevations & Analytical Data
TPH-g, BTEX, MtBE
3519 Castro Valley Blvd, Castro Valley, CA

Monitoring Well	Date	Top of casing elevation ¹ (feet)	Depth to Groundwater (feet)	Groundwater Elevation (feet)	TPH-g (µg/L)	Benzene (µg/L)	Toluene (µg/L)	Ethyl benzene (µg/L)	Total Xylenes (µg/L)	MtBE (µg/L) 8260B
ESE-4 cont.	3/19/1999	177.66	7.71	169.95	NA	NA	NA	NA	NA	NA
	6/23/1999	177.66	8.78	168.88	NA	NA	NA	NA	NA	NA
	9/27/1999	177.66	9.27	168.39	NA	NA	NA	NA	NA	NA
	12/9/1999	177.66	9.21	168.45	NA	NA	NA	NA	NA	NA
	3/9/2000	177.66	6.82	170.84	NA	NA	NA	NA	NA	NA
	6/8/2000	177.66	8.72	168.94	NA	NA	NA	NA	NA	NA
	9/18/2000	177.66	8.72	168.94	NA	NA	NA	NA	NA	NA
	12/14/2000	177.66	8.61	169.05	NA	NA	NA	NA	NA	NA
	3/21/2001	177.66	8.61	169.05	NA	NA	NA	NA	NA	NA
	6/18/2001	177.66	9.24	168.42	NA	NA	NA	NA	NA	NA
	9/18/2001	177.66	9.35	168.31	NA	NA	NA	NA	NA	NA
	12/13/2001	177.66	8.53	169.13	NA	NA	NA	NA	NA	NA
	3/14/2002	177.66	8.44	169.22	NA	NA	NA	NA	NA	NA
	6/19/2002	177.66	10.97	166.69	NA	NA	NA	NA	NA	NA
	9/10/2002	177.66	9.27	168.39	NA	NA	NA	NA	NA	NA
	12/16/2002	177.66	6.90	170.76	NA	NA	NA	NA	NA	NA
3/11/2003	177.66	8.83	168.83	NA	NA	NA	NA	NA	NA	
6/17/2003	177.66	8.84	168.82	NA	NA	NA	NA	NA	NA	
ESE-5	10/5/1992	176.08	9.22	166.86	1300	200	3.8	1.2	18	NA
	4/1/1993	176.08	7.02	169.06	13000	2200	26	730	1000	NA
	4/1/1993	176.08	NM	NM	13000	2500	25	740	1100	NA
	6/29/1993	176.08	10.21	165.87	7600	1500	9.3	170	100	NA
	9/23/1993	176.08	10.64	165.44	560	19	1.2	0.9	1.8	NA
	12/10/1993	176.08	9.42	166.66	1700	300	3	76	110	14.07

Table 1
Historical Groundwater Elevations & Analytical Data
TPH-g, BTEX, MtBE
3519 Castro Valley Blvd, Castro Valley, CA

Monitoring Well	Date	Top of casing elevation ¹ (feet)	Depth to Groundwater (feet)	Groundwater Elevation (feet)	TPH-g (µg/L)	Benzene (µg/L)	Toluene (µg/L)	Ethyl benzene (µg/L)	Total Xylenes (µg/L)	MtBE (µg/L) 8260B
ESE-5 cont	2/7/1994	176.08	9.35	166.73	3500	640	7.8	90	130	45.13
	8/8/1994	176.08	8.76	167.32	2600	210	4.6	9.4	4.4	33
	8/8/1994	176.08	NM	NM	2500	230	4.6	13	4.8	32
	10/12/1994	176.08	8.95	167.13	5600	560	9.5	75	21	79.2
	10/12/1994	176.08	NM	NM	6000	550	10	78	22	77
	1/19/1995	176.08	5.40	170.68	1900	620	<5	95	15	NA
	1/19/1995	176.08	NM	NM	1600	620	<5	93	17	NA
	5/2/1995	176.08	6.48	169.60	5700	1100	<10	180	58	NA
	5/2/1995	176.08	NM	NM	5300	1100	<10	180	58	NA
	7/28/1995	176.08	7.97	168.11	520	15	<0.50	1.7	1.3	NA
	7/28/1995	176.08	NM	NM	460	7.2	<0.50	1.9	1.5	NA
	11/17/1995	176.08	8.39	167.69	850	39	1.8	7.6	2.7	24
	2/7/1996	176.08	4.71	171.37	4100	670	6	190	140	<50
	4/23/1996	176.08	7.35	168.73	3000	570	<5	79	100	84
	7/9/1996	176.08	9.40	166.68	620	150	1.7	9.3	6.4	25
	10/10/1996	176.08	9.04	167.04	1100	29	<5	<5	<5	<50
	10/10/1996	176.08	NM	NM	1100	31	<5	<5	<5	<50
	1/20/1997	176.08	5.82	170.26	2100	980	<25	280	80	<250
	1/20/1997	176.08	NM	NM	2700	910	8.8	280	84	180
	4/25/1997	176.08	7.24	168.84	NA	NA	NA	NA	NA	NA
	4/28/1997	176.08	NM	NM	<250	7.9	<5.0	<5.0	<5.0	<50
	7/18/1997	176.08	7.86	168.22	1200	<5	<10	<10	<10	<100
	7/18/1997	176.08	NM	NM	630	31	<5.0	<5.0	<5.0	130
	10/27/1997	176.08	7.91	168.17	<250	5.4	<5.0	<5.0	<5.0	<50

Table 1
Historical Groundwater Elevations & Analytical Data
TPH-g, BTEX, MtBE
3519 Castro Valley Blvd, Castro Valley, CA

Monitoring Well	Date	Top of casing elevation ¹ (feet)	Depth to Groundwater (feet)	Groundwater Elevation (feet)	TPH-g (µg/L)	Benzene (µg/L)	Toluene (µg/L)	Ethyl benzene (µg/L)	Total Xylenes (µg/L)	MtBE (µg/L) 8260B
ESE-5 cont.	1/22/1998	176.08	4.64	171.44	170	7.7	<1.0	<1.0	<1.0	130
	4/23/1998	176.08	6.31	169.77	720	79	<5.0	9	<5.0	180
	7/29/1998	176.08	7.43	168.65	NA	NA	NA	NA	NA	NA
	7/30/1998	176.08	NM	NM	840	9.8	<1.0	4	<1.0	710
	12/17/1998	176.08	7.05	169.03	NA	NA	NA	NA	NA	NA
	3/19/1999	176.08	5.00	171.08	<250	<5.0	<5.0	<5.0	<5.0	<5.0
	6/23/1999	176.08	7.77	168.31	NA	NA	NA	NA	NA	NA
	9/27/1999	176.08	8.11	167.97	450	10	<5.0	6.3	<5.0	220
	12/9/1999	176.08	7.66	168.42	NA	NA	NA	NA	NA	NA
	3/9/2000	176.08	5.08	171.00	1700	170	2.5	45	6.4	140
	6/8/2000	176.08	7.36	168.72	NA	NA	NA	NA	NA	NA
	9/18/2000	176.08	7.71	168.37	130	0.65	<0.50	0.71	<0.50	51
	12/14/2000	176.08	2.36	173.72	NA	NA	NA	NA	NA	NA
	3/21/2001	176.08	7.42	168.66	1000	10.3	<2.5	11	<7.5	70.8
	6/18/2001	176.08	7.92	168.16	NA	NA	NA	NA	NA	NA
	9/18/2001	176.26	8.23	168.03	200	0.868	<0.50	0.55	<1.5	57.5
	12/13/2001	176.26	7.80	168.46	NA	NA	NA	NA	NA	NA
	3/14/2002	176.26	6.55	169.71	1300	17.1	1.35	15.4	1.42	37.4
	6/19/2002	176.26	7.83	168.43	NA	NA	NA	NA	NA	NA
	9/10/2002	176.26	8.22	168.04	680	9.9	<5.0	<5.0	<5.0	44
	12/16/2002	176.26	6.58	169.68	NA	NA	NA	NA	NA	NA
	3/11/2003	176.26	6.77	169.49	2100	14	<2.5	15	3	80
	6/17/2003	176.26	6.75	169.51	NA	NA	NA	NA	NA	NA
9/17/2003	176.26	8.48	167.78	970	10 C	<0.5	<0.5	5.3	34	
12/9/2003	176.26	7.32	168.94	700	6.5	<0.5	3.1	2.7 C	34	

Table 1
Historical Groundwater Elevations & Analytical Data
TPH-g, BTEX, MtBE
3519 Castro Valley Blvd, Castro Valley, CA

Monitoring Well	Date	Top of casing elevation ¹ (feet)	Depth to Groundwater (feet)	Groundwater Elevation (feet)	TPH-g (µg/L)	Benzene (µg/L)	Toluene (µg/L)	Ethyl benzene (µg/L)	Total Xylenes (µg/L)	MtBE (µg/L) 8260B
ESE-5 cont.	2/26/2004	176.26	5.21	171.05	2400 H	41	2.8 C	18	2.4 C	29
	5/21/2004	176.26	7.50	168.76	1500	2.6 C	<0.5	2.1 C	2.1 C	25
	8/10/2004	178.80	8.28	170.52	680	<0.5	<0.5	<0.5	<0.5	33
	10/19/2004	178.80	8.26	170.54	380	<0.5	<0.5	<0.5	1.4	39
	1/14/2005	178.80	5.16	173.64	2400	18	1.4	22	2.1	26
	4/14/2005	178.80	6.13	172.67	4800	7.75	1.26	14.3	<1.0	23.1
	7/7/2005	178.80	7.52	171.28	3240	0.78	<2.0	1.18	<1.0	36.6
	11/15/2005	178.80	7.85	170.95	1190	0.51	<2.0	<0.5	<1.0	30
	2/8/2006	178.80	5.83	172.97	2510	1.91	<2.0	2.82	<1.0	20.7
	4/27/2006	178.80	5.71	173.09	4,700	2.76	<2.0	4.77	<1.0	28.3
	8/1/2006	178.80	7.71	171.09	1,890	0.7	<2.0	0.75	<1.0	24.7
	10/19/2006	178.80	8.00	170.80	474	<0.5	<2.0	3.39	<1.0	29
	1/12/2007	178.80	7.41	171.39	868	2.18	<2.0	2.66	<2.0	16.3
	4/17/2007	178.80	7.51	171.29	1,240	10.2	<2.0	10.4	2.37	17.2
	7/17/2007	178.80	7.47	171.33	836	3.1	<2.0	4.91	2.35	25.8
	10/16/2007	178.80	6.26	172.54	2,120	2.5	<2.0	6.19	2.61	17.5
	1/17/2008	178.80	6.59	172.21	2,730	5.74	<2.0	14.3	<2.0	13.1
	4/17/2008	178.80	6.81	171.99	2,770	4.7	<2.0	15.9	<2.0	<0.5
	7/16/2008	178.80	7.76	171.04	2,160	0.9	<2.0	1.1	<2.0	6.28
	10/14/2008	178.80	8.40	170.40	1,300	<0.5	<0.5	0.6	<0.5	9.9
1/6/2009	178.80	7.66	171.14	1,100 ^Y	0.61	<0.5	1.6	<0.5	8	
4/6/2009	178.80	7.79	171.01	1,900 ^Y	4.6	<0.5	9.3	0.59	5.3	
	7/7/2009	178.80	7.84	170.96	2,700^Y	3.0	<0.5	2.3	<0.5	6.6
MW-6	7/28/1995	179.24	10.00	169.24	<50	<0.50	<0.50	<0.50	<1.0	NA
	11/17/1995	179.24	10.44	168.80	<50	<0.50	<0.50	<0.50	<1.0	<5.0
	2/7/1996	179.24	7.68	171.56	<50	<0.5	<1.0	<1.0	<1.0	<10
	4/23/1996	179.24	9.33	169.91	<50	<0.5	<1.0	<1.0	<1.0	<10
	7/9/1996	179.24	10.10	169.14	<50	<0.5	<1.0	<1.0	<1.0	<10
	10/10/1996	179.24	11.00	168.24	<50	<0.5	<1.0	<1.0	<1.0	<10

Table 1
Historical Groundwater Elevations & Analytical Data
TPH-g, BTEX, MtBE
3519 Castro Valley Blvd, Castro Valley, CA

Monitoring Well	Date	Top of casing elevation ¹ (feet)	Depth to Groundwater (feet)	Groundwater Elevation (feet)	TPH-g (µg/L)	Benzene (µg/L)	Toluene (µg/L)	Ethyl benzene (µg/L)	Total Xylenes (µg/L)	MtBE (µg/L) 8260B
MW-6 cont.	1/20/1997	179.24	8.70	170.54	<50	<0.5	<1.0	<1.0	<1.0	<10
	4/25/1997	179.24	10.16	169.08	<50	<0.5	<1.0	<1.0	<1.0	<10
	7/18/1997	179.24	10.66	168.58	<50	<0.5	<1.0	<1.0	<1.0	<10
	10/27/1997	179.24	10.25	168.99	<50	<0.5	<1.0	<1.0	<1.0	<10
	1/22/1998	179.24	7.76	171.48	<50	<0.5	<1.0	<1.0	<1.0	<10
	4/23/1998	179.24	9.10	170.14	<50	<0.5	<1.0	<1.0	<1.0	<10
	7/29/1998	179.24	10.40	168.84	NA	NA	NA	NA	NA	NA
	7/30/1998	179.24	NM	NM	<50	<0.5	<1.0	<1.0	<1.0	<10
	12/17/1998	179.24	9.40	169.84	NA	NA	NA	NA	NA	NA
	3/19/1999	179.24	9.10	170.14	NA	NA	NA	NA	NA	NA
	6/23/1999	179.24	9.79	169.45	NA	NA	NA	NA	NA	NA
	9/27/1999	179.24	10.10	169.14	NA	NA	NA	NA	NA	NA
	12/9/1999	179.24	9.97	169.27	NA	NA	NA	NA	NA	NA
	3/9/2000	179.24	8.56	170.68	NA	NA	NA	NA	NA	NA
	6/8/2000	179.24	9.11	170.13	NA	NA	NA	NA	NA	NA
	9/18/2000	179.24	9.77	169.47	NA	NA	NA	NA	NA	NA
	12/14/2000	179.24	9.17	170.07	NA	NA	NA	NA	NA	NA
	3/21/2001	179.24	9.82	169.42	NA	NA	NA	NA	NA	NA
	6/18/2001	179.24	10.19	169.05	NA	NA	NA	NA	NA	NA
	9/18/2001	179.24	10.25	168.99	NA	NA	NA	NA	NA	NA
	12/13/2001	179.24	9.75	169.49	NA	NA	NA	NA	NA	NA
	3/14/2002	179.24	9.53	169.71	NA	NA	NA	NA	NA	NA
	6/19/2002	179.24	9.87	169.37	NA	NA	NA	NA	NA	NA
	9/10/2002	179.24	9.49	169.75	NA	NA	NA	NA	NA	NA
	12/16/2002	179.24	8.39	170.85	NA	NA	NA	NA	NA	NA
	3/11/2003	179.24	9.40	169.84	NA	NA	NA	NA	NA	NA
	6/17/2003	179.24	9.71	169.53	NA	NA	NA	NA	NA	NA
	9/17/2003	179.24	10.21	169.03	<50	<0.5	<0.5	<0.5	<0.5	<2.0
12/9/2003	179.24	9.66	169.58	<50	<0.5	<0.5	<0.5	<0.5	<0.5	

Table 1
Historical Groundwater Elevations & Analytical Data
TPH-g, BTEX, MtBE
3519 Castro Valley Blvd, Castro Valley, CA

Monitoring Well	Date	Top of casing elevation ¹ (feet)	Depth to Groundwater (feet)	Groundwater Elevation (feet)	TPH-g (µg/L)	Benzene (µg/L)	Toluene (µg/L)	Ethyl benzene (µg/L)	Total Xylenes (µg/L)	MtBE (µg/L) 8260B
MW-6 cont.	2/26/2004	179.24	7.83	171.41	<50	<0.5	<0.5	<0.5	<0.5	<0.5
	5/21/2004	179.24	9.75	169.49	<50	<0.5	<0.5	<0.5	<0.5	<0.5
	8/10/2004	181.80	10.28	171.52	<50	<0.5	<0.5	<0.5	<0.5	<0.5
	10/19/2004	181.80	9.91	171.89	<50	<0.5	<0.5	<0.5	<0.5	<0.5
	1/14/2005	181.80	8.40	173.40	<50	0.6	<0.5	<0.5	<0.5	<0.5
	4/14/2005	181.80	9.04	172.76	<200	<0.5	<0.5	<0.5	<1.0	<0.5
	7/7/2005	181.80	9.94	171.86	<200	<0.5	<2.00	<0.5	<1.00	<0.5
	11/15/2005	181.80	9.98	171.82	<50	<0.5	<2.0	<0.5	<1.0	<0.5
	2/8/2006	181.80	9.91	171.89	<50	<0.5	<2.0	<0.5	<1.0	<0.5
	4/27/2006	181.80	9.54	172.26	<50	<0.5	<2.0	<0.5	<1.0	<0.5
	8/1/2006	181.80	9.61	172.19	<50	<0.5	<2.0	<0.5	<1.0	0.51
	10/19/2006	181.80	10.23	171.57	<50	<0.5	<2.0	<0.5	<1.0	0.63
	1/12/2007	181.80	10.13	171.67	<50	<0.5	<2.0	<0.5	<2.0	<0.5
	4/17/2007	181.80	10.22	171.58	<50	<0.5	<2.0	<0.5	<2.0	<0.5
	7/17/2007	181.80	9.76	172.04	<50	<0.5	<2.0	<0.5	<2.0	<0.5
	10/16/2007	181.80	9.82	171.98	<50	<0.5	<2.0	<0.5	<2.0	<0.5
	1/17/2008	181.80	9.43	172.37	<50	<0.50	<2.0	<0.50	<2.0	<0.5
	4/17/2008	181.80	9.54	172.26	<50	<0.5	<2.0	<0.5	<2.0	<0.5
	7/16/2008	181.80	9.80	172.00	<50	<0.5	<2.0	<0.5	<2.0	<0.5
	10/14/2008	181.80	10.48	171.32	<50	<0.5	<0.5	<0.5	<0.5	<0.5
1/6/2009	181.80	10.01	171.79	<50	<0.5	<0.5	<0.5	<0.5	<0.5	
4/6/2009	181.80	10.15	171.65	<50	<0.5	<0.5	<0.5	<0.5	<0.5	
7/7/2009	181.80	10.28	171.52	<50	<0.5	<0.5	<0.5	<0.5	<0.5	
MW-7	7/28/1995	176.55	9.25	167.30	<50	0.54	0.54	<0.50	<1.0	NA
	11/17/1995	176.55	9.73	166.82	1100	<10	<10	<10	<20	4000

Table 1
Historical Groundwater Elevations & Analytical Data
TPH-g, BTEX, MtBE
3519 Castro Valley Blvd, Castro Valley, CA

Monitoring Well	Date	Top of casing elevation ¹ (feet)	Depth to Groundwater (feet)	Groundwater Elevation (feet)	TPH-g (µg/L)	Benzene (µg/L)	Toluene (µg/L)	Ethyl benzene (µg/L)	Total Xylenes (µg/L)	MtBE (µg/L) 8260B
MW-7 cont.	2/7/1996	176.55	6.48	170.07	610	<0.50	<1.0	<1.0	<1.0	2500
	2/7/1996	176.55	NM	NM	280	<0.50	<1.0	<1.0	<1.0	2600
	4/23/1996	176.55	8.37	168.18	110	<0.50	<1.0	<1.0	<1.0	3500
	4/23/1996	176.55	NM	NM	230	<0.50	<1.0	<1.0	<1.0	3500
	7/9/1996	176.55	9.24	167.31	230	<0.50	<1.0	<1.0	<1.0	4296
	7/9/1996	176.55	NM	NM	220	<0.50	<1.0	<1.0	<1.0	4400
	10/10/1996	176.55	10.05	166.50	NA	NA	NA	NA	NA	NA
	10/11/1996	176.55	NM	NM	1600	<0.50	<1.0	<1.0	<1.0	3000
	1/20/1997	176.55	7.51	169.04	<50	0.63	<1.0	<1.0	<1.0	2600
	4/25/1997	176.55	8.79	167.76	NA	NA	NA	NA	NA	NA
	4/28/1997	176.55	NM	NM	1500	<0.50	<1.0	<1.0	<1.0	3600
	4/28/1997	176.55	NM	NM	7700	3500	<25	74	37	<250
	7/18/1997	176.55	9.50	167.05	1400	<0.50	<1.0	<1.0	<1.0	2600
	10/27/1997	176.55	9.19	167.36	420	<0.50	<1.0	<1.0	<1.0	560
	1/22/1998	176.55	6.45	170.10	3100	<0.50	<1.0	<1.0	1.4	2300
	4/23/1998	176.55	8.02	168.53	3800	<0.50	<1.0	<1.0	<1.0	3800
	7/29/1998	176.55	8.88	167.67	NA	NA	NA	NA	NA	NA
	7/30/1998	176.55	NM	NM	500	<2.5	<5.0	<5.0	<5.0	<50
	7/30/1998	176.55	NM	NM	4700	<12	<25	<25	<25	4700
	12/17/1998	176.55	8.62	167.93	NA	NA	NA	NA	NA	NA
	3/19/1999	176.55	7.52	169.03	3800	<1.0	<1.0	<1.0	<1.0	3800
	6/23/1999	176.55	9.63	166.92	NA	NA	NA	NA	NA	NA
	9/27/1999	176.55	9.39	167.16	140	<10	<10	<10	<10	3800
	12/9/1999	176.55	9.94	166.61	NA	NA	NA	NA	NA	NA
	3/9/2000	176.55	6.72	169.83	<50	<0.50	<0.50	<0.50	<0.50	1400
	6/8/2000	176.55	7.38	169.17	NA	NA	NA	NA	NA	NA
9/18/2000	176.55	9.18	167.37	190	<0.50	<0.50	<0.50	<0.50	580	
12/14/2000	176.55	8.13	168.42	NA	NA	NA	NA	NA	NA	

Table 1
Historical Groundwater Elevations & Analytical Data
TPH-g, BTEX, MtBE
3519 Castro Valley Blvd, Castro Valley, CA

Monitoring Well	Date	Top of casing elevation ¹ (feet)	Depth to Groundwater (feet)	Groundwater Elevation (feet)	TPH-g (µg/L)	Benzene (µg/L)	Toluene (µg/L)	Ethyl benzene (µg/L)	Total Xylenes (µg/L)	MtBE (µg/L) 8260B
MW-7 cont.	3/21/2001	176.55	8.98	167.57	1300	<0.50	<0.50	<0.50	<1.5	1460
	6/18/2001	176.55	9.68	166.87	NA	NA	NA	NA	NA	NA
	9/18/2001	176.55	9.80	166.75	<0.50	<0.50	<0.50	<0.50	<1.5	94.9
	12/13/2001	176.55	9.26	167.29	NA	NA	NA	NA	NA	NA
	3/14/2002	176.55	8.69	167.86	800	<0.50	<0.50	<0.50	<1.0	952
	6/19/2002	176.55	9.06	167.49	NA	NA	NA	NA	NA	NA
	9/10/2002	176.55	9.23	167.32	260	<2.0	<2.0	<2.0	<2.0	580
	12/16/2002	176.55	7.77	168.78	NA	NA	NA	NA	NA	NA
	3/11/2003	176.55	8.30	168.25	620	<2.5	<2.5	<2.5	<2.5	1100
	6/17/2003	176.55	9.51	167.04	NA	NA	NA	NA	NA	NA
	9/17/2003	176.55	9.52	167.03	<50	<0.5	<0.5	<0.5	<0.5	460
	12/9/2003	176.55	8.99	167.56	<50	<0.5	<0.5	<0.5	<0.5	420
	2/26/2004	176.55	6.55	170.00	<50	<0.5	<0.5	<0.5	<0.5	330
	5/21/2004	176.55	8.90	167.65	<50	<0.5	<0.5	<0.5	<0.5	630
	8/10/2004	179.11	9.58	169.53	<50	<0.5	<0.5	<0.5	<0.5	750
	10/19/2004	179.11	9.20	169.91	<50	<0.5	<0.5	<0.5	<0.5	550
	1/14/2005	179.11	7.25	171.86	<50	<2.0	<2.0	<2.0	<2.0	250
	4/14/2005	179.11	7.94	171.17	<200	<0.5	<0.5	<0.5	<1.0	285
	7/7/2005	179.11	9.08	170.03	<400	<1.0	<4.0	<1.0	<2.0	452
	11/15/2005	179.11	9.14	169.97	<50	<0.5	<2.0	<0.5	<1.0	110
	2/8/2006	179.11	7.93	171.18	<50	<0.5	<2.0	<0.5	<1.0	101
	4/27/2006	179.11	8.40	170.71	<50	<0.5	<2.0	<0.5	<1.0	131
	8/1/2006	179.11	8.89	170.22	<50	<0.5	<2.0	<0.5	<1.0	68.6
	10/19/2006	179.11	9.44	169.67	<50	<0.5	<2.0	<0.5	<1.0	65.5
	1/12/2007	179.11	8.91	170.20	<50	<0.5	<2.0	<0.5	<2.0	38
	4/17/2007	179.11	8.58	170.53	<50	<0.5	<2.0	<0.5	<2.0	24.7
	7/17/2007	179.11	9.04	170.07	<50	2.07	<2.0	<0.5	<2.0	29.3
10/6/2007	179.11	7.88	171.23	<50	0.88	<2.0	<0.5	<2.0	5.26	

Table 1
Historical Groundwater Elevations & Analytical Data
TPH-g, BTEX, MtBE
3519 Castro Valley Blvd, Castro Valley, CA

Monitoring Well	Date	Top of casing elevation ¹ (feet)	Depth to Groundwater (feet)	Groundwater Elevation (feet)	TPH-g (µg/L)	Benzene (µg/L)	Toluene (µg/L)	Ethyl benzene (µg/L)	Total Xylenes (µg/L)	MtBE (µg/L) 8260B
MW-7 cont.	1/17/2008	179.11	NM	NM	NA	NA	NA	NA	NA	NA
	4/17/2008	179.11	8.85	170.26	<50	1.87	<2.0	<0.5	<2.0	21.6
	7/16/2008	179.11	9.34	169.77	<50	<0.5	<2.0	<0.5	<2.0	11.4
	10/14/2008	179.11	10.06	169.05	<50	0.78	<0.5	<0.5	<0.5	12
	1/6/2009	179.11	9.12	169.99	<50	<0.5	<0.5	<0.5	<0.5	14
	4/6/2009	179.11	9.28	169.83	<50	<0.5	<0.5	<0.5	<0.5	13
	7/7/2009	179.11	9.59	169.52	<50	<0.5	<0.5	<0.5	<0.5	15
MW-8	7/28/1995	176.34	7.80	168.54	1,100	<2.5	<2.5	<2.5	<5.0	NA
	11/17/1995	176.34	8.29	168.05	8,300	75	5.3	670	240	140
	2/7/1996	176.34	4.99	171.35	2,300	33	<10	190	216	<100
	4/23/1996	176.34	6.09	170.25	2,000	390	<10	150	26	<250
QC-2	4/1/1993	NM	NM	NM	<50	<0.5	<0.5	<0.5	<0.5	NA
	6/29/1993	NM	NM	NM	<50	<0.5	<0.5	<0.5	<0.5	NA
	9/23/1993	NM	NM	NM	<50	<0.5	<0.5	<0.5	<0.5	NA
	12/10/1993	NM	NM	NM	<50	<0.5	<0.5	<0.5	<0.5	<5.0
	2/17/1994	NM	NM	NM	<50	<0.5	<0.5	<0.5	<0.5	NA
	8/8/1994	NM	NM	NM	<50	<0.5	<0.5	<0.5	<0.5	NA
	10/12/1994	NM	NM	NM	<50	<0.5	<0.5	<0.5	<0.5	NA
	1/19/1995	NM	NM	NM	<50	<0.5	<0.5	<0.5	<1.0	NA
	5/2/1995	NM	NM	NM	<50	<0.50	<0.50	<0.50	<1.0	NA
	7/28/1995	NM	NM	NM	<50	<0.50	<0.50	<0.50	<1.0	NA
	11/17/1995	NM	NM	NM	<50	<0.50	<0.50	<0.50	<1.0	<5.0
	2/7/1996	NM	NM	NM	<50	<0.5	<1.0	<1.0	<1.0	<10
	4/23/1996	NM	NM	NM	<50	<0.5	<1.0	<1.0	<1.0	<10
	7/9/1996	NM	NM	NM	<50	<0.5	<1.0	<1.0	<1.0	<10

Table 1
Historical Groundwater Elevations & Analytical Data
TPH-g, BTEX, MtBE
3519 Castro Valley Blvd, Castro Valley, CA

Monitoring Well	Date	Top of casing elevation ¹ (feet)	Depth to Groundwater (feet)	Groundwater Elevation (feet)	TPH-g (µg/L)	Benzene (µg/L)	Toluene (µg/L)	Ethyl benzene (µg/L)	Total Xylenes (µg/L)	MtBE (µg/L) 8260B
SOMA-1	8/10/2004	180.95	11.53	169.42	84	<0.5	<0.5	1.5 C	2.2	2100
	10/19/2004	180.95	10.41	170.54	56	<0.5	<0.5	1.3 C	1.4 C	1600
	1/14/2005	180.95	9.68	171.27	58	<3.1	<3.1	<3.1	<3.1	330
	4/14/2005	180.95	9.37	171.58	<2200	<5.5	<5.5	<5.5	<11	668
	7/7/2005	180.95	10.21	170.74	<860	<2.15	<8.6	<2.15	<4.3	591
	11/15/2005	180.95	10.70	170.25	<50	<0.5	<2.0	1.1	<1.0	256
	2/8/2006	180.95	9.30	171.65	127	1.56	<2.0	3.23	3.12	176
	4/27/2006	180.95	9.64	171.31	81.6	1.14	<2.0	2.8	<1.0	189
	8/1/2006	180.95	10.25	170.70	<50	1.07	<2.0	1.46	<1.0	122
	10/19/2006	180.95	10.73	170.22	<50	0.68	<2.0	4.17	<1.0	116
	1/12/2007	180.95	10.38	170.57	<50	<0.5	<2.0	<0.5	<2.0	68.7
	4/17/2007	180.95	10.09	170.86	<50	5.76	<2.0	4.33	2.59	33.4
	7/17/2007	180.95	10.35	170.60	<50	14.8	<2.0	4.63	3.32	39.4
	10/16/2007	180.95	9.71	171.24	<50	5.7	<2.0	<0.5	<2.0	14.2
	1/17/2008	180.95	10.01	170.94	<50	1.02	<2.0	<0.5	<2.0	12.8
	4/17/2008	180.95	10.17	170.78	<50	3.13	<2.0	<0.5	<2.0	12.8
	7/16/2008	180.95	10.63	170.32	<50	10.6	<2.0	<0.5	<2.0	15.8
	10/14/2008	180.95	11.36	169.59	<50	1.1	<0.5	<0.5	<0.5	15
	1/6/2009	180.95	10.81	170.14	<50	0.6	<0.5	<0.5	<0.5	14
4/6/2009	180.95	10.69	170.26	<50	<0.5	<0.5	<0.5	<0.5	12	
7/7/2009	180.95	11.01	169.94	<50	0.57	<0.5	1.2	0.91	12	
SOMA-2	8/10/2004	178.99	10.69	168.30	<50	<0.5	<0.5	<0.5	<0.5	0.8
	10/19/2004	178.99	10.75	168.24	<50	<0.5	<0.5	<0.5	<0.5	2.4
	1/14/2005	178.99	9.45	169.54	<50	<0.5	<0.5	<0.5	<0.5	1.1
	4/14/2005	178.99	10.46	168.53	<200	<0.5	<0.5	<0.5	<1.0	<0.5
	7/7/2005	178.99	11.81	167.18	<200	<0.5	<2.0	<0.5	<1.0	<0.5
	11/15/2005	178.99	12.02	166.97	<50	<0.5	<2.0	<0.5	<1.0	1.61

Table 1
Historical Groundwater Elevations & Analytical Data
TPH-g, BTEX, MtBE
3519 Castro Valley Blvd, Castro Valley, CA

Monitoring Well	Date	Top of casing elevation ¹ (feet)	Depth to Groundwater (feet)	Groundwater Elevation (feet)	TPH-g (µg/L)	Benzene (µg/L)	Toluene (µg/L)	Ethyl benzene (µg/L)	Total Xylenes (µg/L)	MtBE (µg/L) 8260B
SOMA-2 cont	2/8/2006	178.99	11.88	167.11	<50	<0.5	<2.0	<0.5	<1.0	<0.5
	4/27/2006	178.99	10.95	168.04	<50	<0.5	<2.0	<0.5	<1.0	<0.5
	8/1/2006	178.99	11.85	167.14	<50	<0.5	<2.0	<0.5	<1.0	1.11
	10/19/2006	178.99	10.62	168.37	<50	<0.5	<2.0	<0.5	<1.0	1.36
	1/12/2007	178.99	10.26	168.73	<50	<0.5	<2.0	<0.5	<2.0	<0.5
	4/17/2007	178.99	11.88	167.11	<50	<0.5	<2.0	<0.5	<2.0	0.87
	7/17/2007	178.99	10.84	168.15	<50	<0.5	<2.0	<0.5	<2.0	<0.5
	10/16/2007	178.99	9.69	169.30	<50	<0.5	<2.0	<0.5	<2.0	<0.5
	1/17/2008	178.99	9.62	169.37	<50	<0.5	<2.0	<0.5	<2.0	<0.5
	4/17/2008	178.99	10.06	168.93	<50	<0.5	<2.0	<0.5	<2.0	<0.5
	7/16/2008	178.99	10.63	168.36	<50	<0.5	<2.0	<0.5	<2.0	<0.5
	10/14/2008	178.99	11.26	167.73	<50	<0.5	<0.5	<0.5	<0.5	<0.5
	1/6/2009	178.99	10.22	168.77	<50	<0.5	<0.5	<0.5	<0.5	<0.5
	4/6/2009	178.99	10.38	168.61	<50	<0.5	<0.5	<0.5	<0.5	<0.5
7/7/2009	178.99	10.40	168.59	<50	<0.5	<0.5	<0.5	<0.5	<0.5	
SOMA-3	8/10/2004	176.81	9.97	166.84	<50	<0.5	<0.5	<0.5	<0.5	<0.5
	10/19/2004	176.81	9.59	167.22	<50	<0.5	<0.5	<0.5	<0.5	<0.5
	1/14/2005	176.81	8.23	168.58	<50	<0.5	<0.5	<0.5	<0.5	<0.5
	4/14/2005	176.81	8.64	168.17	<200	<0.5	<0.5	<0.5	<1.0	<0.5
	7/7/2005	176.81	9.60	167.21	<200	<0.5	<2.0	<0.5	<1.0	<0.5
	11/15/2005	176.81	10.01	166.80	<50	<0.5	<2.0	<0.5	<1.0	5.1
	2/8/2006	176.81	8.80	168.01	<50	<0.5	<2.0	<0.5	<1.0	7.16
	4/27/2006	176.81	9.00	167.81	<50	<0.5	<2.0	<0.5	<1.0	14.2
	8/1/2006	176.81	9.91	166.90	<50	<0.5	<2.0	<0.5	<1.0	7.29
	10/19/2006	176.81	10.21	166.60	<50	<0.5	<2.0	<0.5	<1.0	41.4
	1/12/2007	176.81	9.73	167.08	<50	<0.5	<2.0	<0.5	<2.0	20.9
	4/17/2007	176.81	9.81	167.00	<50	<0.5	<2.0	<0.5	<2.0	32.1
	7/17/2007	176.81	10.06	166.75	<50	<0.5	<2.0	<0.5	<2.0	23.6
10/16/2007	176.81	9.54	167.27	<50	<0.5	<2.0	<0.5	<2.0	22.3	

Table 1
Historical Groundwater Elevations & Analytical Data
TPH-g, BTEX, MtBE
3519 Castro Valley Blvd, Castro Valley, CA

Monitoring Well	Date	Top of casing elevation ¹ (feet)	Depth to Groundwater (feet)	Groundwater Elevation (feet)	TPH-g (µg/L)	Benzene (µg/L)	Toluene (µg/L)	Ethyl benzene (µg/L)	Total Xylenes (µg/L)	MtBE (µg/L) 8260B
SOMA-3 cont.	1/17/2008	176.81	9.06	167.75	<50	<0.5	<2.0	<0.5	<2.0	11.1
	4/17/2008	176.81	9.57	167.24	<50	<0.5	<2.0	<0.5	<2.0	23.7
	7/16/2008	176.81	10.25	166.56	<50	<0.5	<2.0	<0.5	<2.0	10.6
	10/14/2008	176.81	10.76	166.05	<50	<0.5	<0.5	<0.5	<0.5	19
	1/6/2009	176.81	9.53	167.28	<50	<0.5	<0.5	<0.5	<0.5	1.1
	4/6/2009	176.81	9.65	167.16	<50	<0.5	<0.5	<0.5	<0.5	5.7
	7/7/2009	176.81	10.19	166.62	<50	<0.5	<0.5	<0.5	<0.5	6
SOMA-4	8/10/2004	176.94	9.44	167.50	140	0.98	<0.5	7.8	<0.5	11
	10/19/2004	176.94	9.91	167.03	150	<0.5	<0.5	10	<0.5	8.8
	1/14/2005	176.94	8.36	168.58	500	3.7	<0.5	53	<0.5	7.6
	4/14/2005	176.94	7.89	169.05	<200	0.74	<0.5	3.21	<1.0	5.65
	7/7/2005	176.94	11.62	165.32	<200	<0.5	<2.0	0.56	<1.0	7.09
	11/15/2005	176.94	9.33	167.61	<50	<0.5	<2.0	<0.5	<1.0	8.6
	2/8/2006	176.94	9.18	167.76	55.8	<0.5	<2.0	0.85	<1.0	10.4
	4/27/2006	176.94	8.75	168.19	172	1.35	<2.0	8.83	<1.0	11.7
	8/1/2006	176.94	9.52	167.42	<50	0.52	<2.0	1.53	<1.0	14.1
	10/19/2006	176.94	9.51	167.43	<50	<0.5	<2.0	<0.5	<1.0	19.2
	1/12/2007	176.94	8.98	167.96	<50	<0.5	<2.0	<0.5	<2.0	20.4
	4/17/2007	176.94	8.96	167.98	<50	<0.5	<2.0	4.33	<2.0	15.8
	7/17/2007	176.94	9.31	167.63	<50	<0.5	<2.0	4.47	<2.0	13.3
	10/16/2007	176.94	8.96	167.98	<50	<0.5	<2.0	4.5	<2.0	8.57
	1/17/2008	176.94	8.84	168.10	<50	<0.5	<2.0	<0.5	<2.0	8.87
	4/17/2008	176.94	9.44	167.50	<50	<0.5	<2.0	<0.5	<2.0	1.22
	7/16/2008	176.94	9.52	167.42	<50	<0.5	<2.0	<0.5	<2.0	8.58
	10/14/2008	176.94	9.98	166.96	<50	<0.5	<0.5	<0.5	<0.5	9.7
	1/6/2009	176.94	9.29	167.65	<50	<0.5	<0.5	<0.5	<0.5	10
	4/6/2009	176.94	9.31	167.63	<50	<0.5	<0.5	<0.5	<0.5	5.3
	7/7/2009	176.94	9.54	167.40	<50	<0.5	<0.5	<0.5	<0.5	7

Table 1
Historical Groundwater Elevations & Analytical Data
TPH-g, BTEX, MtBE
3519 Castro Valley Blvd, Castro Valley, CA

Monitoring Well	Date	Top of casing elevation ¹ (feet)	Depth to Groundwater (feet)	Groundwater Elevation (feet)	TPH-g (µg/L)	Benzene (µg/L)	Toluene (µg/L)	Ethyl benzene (µg/L)	Total Xylenes (µg/L)	MtBE (µg/L) 8260B
EB-PMP	1/17/2008	NA	NA	NA	<50	<0.5	<2.0	<0.5	<2.0	<0.5
EB-PRB	1/17/2008	NA	NA	NA	<50	<0.5	<2.0	<0.5	<2.0	<0.5
EB-PMP2	1/17/2008	NA	NA	NA	<50	<0.5	<2.0	<0.5	<2.0	<0.5
EB-PRB2	1/17/2008	NA	NA	NA	<50	<0.5	<2.0	<0.5	<2.0	<0.5

Notes:

< : Not detected above laboratory reporting limit.

¹ Top of Casing Elevations were resurveyed by Kier & Wright Engineers Surveyors of Pleasanton, CA on June 21, 2004.

C: Presence confirmed, but RPD between columns exceeds 40%.

H: Heavier hydrocarbons contributed to the quantitation.

NA: Not Applicable/Not Analyzed. Due to construction activities in the Third Quarter 2003, which consisted of the replacement of the USTs and dispensers, wells ESE-1 & ESE-2 were inaccessible. Well ESE-2 also inaccessible during the First Quarter 2007. Well MW-7 had a car parked over it and was inaccessible during the First Quarter 2008 monitoring event

NM: Not Measured

Well ESE-2 was covered over with dirt during the First Quarter 2007 monitoring event.

Well MW-7 had a car parked over it and was inaccessible during the First Quarter 2008 monitoring event.

Equipment Blanks (EB-PRB & EB-PMP) were done to make sure decon efforts were adequate.

Z: Sample exhibits unknown single peak or peaks.

The Third Quarter 2003 was the first time that SOMA analyzed groundwater samples at the site.

The Third Quarter 2004 was the first time that SOMA analyzed groundwater samples at wells SOMA-1 to SOMA-4.

Table 2
Historical Groundwater Analytical Data
Gasoline Oxygenates & Lead Scavengers
3519 Castro Valley Blvd, Castro Valley, CA

Monitoring Well	Date	TBA (µg/L)	DIPE (µg/L)	ETBE (µg/L)	TAME (µg/L)	ETHANOL (µg/L)	1,2-DCA (µg/L)	EDB (µg/L)
ESE-1	6/17/2003	<400	<10	<10	18	NA	NA	NA
	9/17/2003	NA	NA	NA	NA	NA	NA	NA
	12/9/2003	290	<1.0	<1.0	9.5	<2,000	<1.0	<1.0
	2/26/2004	410	<0.5	<0.5	9.7	<1000	<0.5	<0.5
	5/21/2004	190	<0.5	<0.5	<0.5	<1000	<0.5	<0.5
	8/10/2004	180	<0.5	<0.5	<0.5	<1000	<0.5	<0.5
	10/19/2004	270	<0.7	<0.7	4.4	<1400	9.9	<0.7
	1/14/2005	280	<1.3	<1.3	<1.3	<2,500	<1.3	<1.3
	4/14/2005	144	<2.15	<2.15	<8.6	<4300	<2.15	<2.15
	7/7/2005	119	<2.15	<2.15	<8.6	<4300	<2.15	<2.15
	11/15/2005	107	<0.5	<0.5	<2.0	<1000	<0.5	<0.5
	2/8/2006	181	<2.15	<2.15	<8.6	<4300	<2.15	<2.15
	4/27/2006	261	<2.15	<2.15	<8.6	<4300	<2.15	<2.15
	8/1/2006	165	<1.0	<1.0	<4.0	<2000	<1.0	<1.0
	10/19/2006	154	<1.0	<1.0	<4.0	<2000	<1.0	<1.0
	1/12/2007	103	<0.5	<0.5	<2.0	<1000	<0.5	<0.5
	4/17/2007	80.5	<0.5	<0.5	<2.0	<1000	<0.5	<0.5
	7/17/2007	128	<0.5	<0.5	<2.0	<1000	<0.5	<0.5
	10/16/2007	98.7	<0.5	<0.5	<2.0	<1000	<0.5	<0.5
	1/17/2008	61.5	<0.5	<0.5	2.52	<1000	<0.5	<0.5
	4/17/2008	76.4	<0.5	<0.5	<2.0	<1000	59.2	<0.5
	7/16/2008	179	<0.5	<0.5	<2.0	<1000	<0.5	<0.5
	10/14/2008	87	<0.5	<0.5	2.6	<1000	<0.5	<0.5
1/6/2009	93	<1.0	<1.0	<1.0	<2000	<1.0	<1.0	
4/6/2009	130	<1.0	<1.0	<1.0	<2000	<1.0	<1.0	
7/7/2009	100	<0.5	<0.5	<0.5	<1,000	<0.5	<0.5	

Table 2
Historical Groundwater Analytical Data
Gasoline Oxygenates & Lead Scavengers
3519 Castro Valley Blvd, Castro Valley, CA

Monitoring Well	Date	TBA (µg/L)	DIPE (µg/L)	ETBE (µg/L)	TAME (µg/L)	ETHANOL (µg/L)	1,2-DCA (µg/L)	EDB (µg/L)
ESE-2	6/17/2003	<4000	<100	<100	<100	NA	NA	NA
	9/17/2003	NA	NA	NA	NA	NA	NA	NA
	12/9/2003	500	<13	<13	77	<25,000	<13	<13
	2/26/2004	1200	<0.5	<0.5	92	<1000	<0.5	<0.5
	5/21/2004	2400	<10	<10	25	<20,000	<10	<10
	8/10/2004	2300	<2.5	<2.5	12	<5000	<2.5	<2.5
	10/19/2004	1800	<3.6	<3.6	8.6	<7100	<3.6	<3.6
	1/14/2005	470	<8.3	<8.3	28	<17,000	<8.3	<8.3
	4/14/2005	<10.8	<2.15	<2.15	17.9	<4300	<2.15	<2.15
	7/7/2005	109	<2.15	<2.15	9.7	<4300	<2.15	<2.15
	11/15/2005	64.7	<0.5	<0.5	3.43	<1000	<0.5	<0.5
	2/8/2006	46.4	<2.15	<2.15	11	<4300	<2.15	<2.15
	4/27/2006	47.7	<1.0	<1.0	8.29	<2000	<1.0	<1.0
	8/1/2006	20.6	<1.0	<1.0	4.67	<2000	<1.0	<1.0
	10/19/2006	28.9	<0.5	<0.5	4.55	<1000	<0.5	<0.5
	1/12/2007	NA	NA	NA	NA	NA	NA	NA
	4/17/2007	60.8	<0.5	<0.5	3.85	<1000	<0.5	<0.5
	7/17/2007	62.3	<0.5	<0.5	2.95	<1000	<0.5	<0.5
	10/16/2007	46	<0.5	<0.5	2.21	<1000	<0.5	<0.5
	1/17/2008	18.8	<0.5	<0.5	3.38	<1000	<0.5	<0.5
	4/17/2008	18.8	<0.5	<0.5	<2.0	<1000	<0.5	<0.5
	7/16/2008	9.95	<0.5	<0.5	<2.0	<1000	<0.5	<0.5
	10/14/2008	<10	<0.5	<0.5	0.85	<1000	<0.5	<0.5
1/6/2009	27	<0.5	<0.5	0.83	<1000	<0.5	<0.5	
4/6/2009	<10	<0.5	<0.5	<0.5	<1000	<0.5	<0.5	
7/7/2009	18	<0.5	<0.5	<0.5	0.56	<1,000	<0.5	<0.5
ESE-3	6/17/2003	<200	<5.0	<5.0	<5.0	NA	NA	NA
ESE-5	9/17/2003	<10	<0.5	<0.5	<0.5	<1000	<0.5	<0.5
	12/9/2003	<10	<0.5	<0.5	<0.5	<1,000	<0.5	<0.5
	2/26/2004	<10	<0.5	<0.5	<0.5	<1,000	<0.5	<0.5
	5/21/2004	<10	<0.5	<0.5	<0.5	<1,000	<0.5	<0.5
	8/10/2004	<10	<0.5	<0.5	<0.5	<1,000	<0.5	<0.5
	10/19/2004	<10	<0.5	<0.5	<0.5	<1000	<0.5	<0.5

Table 2
Historical Groundwater Analytical Data
Gasoline Oxygenates & Lead Scavengers
3519 Castro Valley Blvd, Castro Valley, CA

Monitoring Well	Date	TBA (µg/L)	DIPE (µg/L)	ETBE (µg/L)	TAME (µg/L)	ETHANOL (µg/L)	1,2-DCA (µg/L)	EDB (µg/L)
ESE-5 cont.	1/14/2005	<10	<0.5	<0.5	<0.5	<1000	<0.5	<0.5
	4/14/2005	17	<0.5	<0.5	<2.0	<1000	<0.5	<0.5
	7/7/2005	<10	<0.5	<0.5	<2.0	<1000	<0.5	<0.5
	11/15/2005	<10	<0.5	<0.5	<2.0	<1000	<0.5	<0.5
	2/8/2006	<10	<0.5	<0.5	<2.0	<1000	<0.5	<0.5
	4/27/2006	<10	<0.5	<0.5	<2.0	<1000	<0.5	<0.5
	8/1/2006	<10	<0.5	<0.5	<2.0	<1000	<0.5	<0.5
	10/19/2006	<10	<0.5	<0.5	<2.0	<1000	<0.5	<0.5
	1/12/2007	<2.0	<0.5	<0.5	<2.0	<1000	<0.5	<0.5
	4/17/2007	8.7	<0.5	<0.5	<2.0	<1000	<0.5	<0.5
	7/17/2007	15.4	<0.5	<0.5	<2.0	<1000	<0.5	<0.5
	10/16/2007	11.5	<0.5	<0.5	<2.0	<1000	<0.5	<0.5
	1/17/2008	17.2	<0.5	<0.5	<2.0	<1000	<0.5	<0.5
	4/17/2008	<2.0	<0.5	<0.5	<2.0	<1000	5.44	<0.5
	7/16/2008	<2.0	<0.5	<0.5	<2.0	<1000	<0.5	<0.5
	10/14/2008	<10	<0.5	<0.5	<0.5	<1000	<0.5	<0.5
	1/6/2009	<10	<0.5	<0.5	<0.5	<1000	<0.5	<0.5
	4/6/2009	<10	<0.5	<0.5	<0.5	<1000	<0.5	<0.5
	7/7/2009	<10	<0.5	<0.5	<0.5	<0.5	<1000	<0.5
MW-6	9/17/2003	<10	<0.5	<0.5	<0.5	<1000	<0.5	<0.5
	12/9/2003	<10	<0.5	<0.5	<0.5	<1,000	<0.5	<0.5
	2/26/2004	<10	<0.5	<0.5	<0.5	<1,000	<0.5	<0.5
	5/21/2004	<10	<0.5	<0.5	<0.5	<1,000	<0.5	<0.5
	8/10/2004	<10	<0.5	<0.5	<0.5	<1,000	<0.5	<0.5
	10/19/2004	<10	<0.5	<0.5	<0.5	<1000	<0.5	<0.5
	1/14/2005	<10	<0.5	<0.5	<0.5	<1000	<0.5	<0.5
	4/14/2005	<2.5	<0.5	<0.5	<2.0	<1000	<0.5	<0.5
	7/7/2005	<10	<0.5	<0.5	<2.0	<1000	<0.5	<0.5
	11/15/2005	<10	<0.5	<0.5	<2.0	<1000	<0.5	<0.5
	2/8/2006	<10	<0.5	<0.5	<2.0	<1000	<0.5	<0.5
	4/27/2006	<10	<0.5	<0.5	<2.0	<1000	<0.5	<0.5
	8/1/2006	<10	<0.5	<0.5	<2.0	<1000	<0.5	<0.5
	10/19/2006	<10	<0.5	<0.5	<2.0	<1000	<0.5	<0.5
	1/12/2007	<2.0	<0.5	<0.5	<2.0	<1000	<0.5	<0.5
	4/17/2007	<2.0	<0.5	<0.5	<2.0	<1000	<0.5	<0.5
7/17/2007	<2.0	<0.5	<0.5	<2.0	<1000	<0.5	<0.5	
10/16/2007	<2.0	<0.5	<0.5	<2.0	<1000	<0.5	<0.5	

Table 2
Historical Groundwater Analytical Data
Gasoline Oxygenates & Lead Scavengers
3519 Castro Valley Blvd, Castro Valley, CA

Monitoring Well	Date	TBA (µg/L)	DIPE (µg/L)	ETBE (µg/L)	TAME (µg/L)	ETHANOL (µg/L)	1,2-DCA (µg/L)	EDB (µg/L)
MW-6 contd.	1/17/2008	<2.0	<0.5	<0.5	<2.0	<1000	<0.5	<0.5
	4/17/2008	<2.0	<0.5	<0.5	<2.0	<1000	<0.5	<0.5
	7/16/2008	<2.0	<0.5	<0.5	<2.0	<1000	<0.5	<0.5
	10/14/2008	<10	<0.5	<0.5	<0.5	<1000	<0.5	<0.5
	1/6/2009	<10	<0.5	<0.5	<0.5	<1000	<0.5	<0.5
	4/6/2009	<10	<0.5	<0.5	<0.5	<1000	<0.5	<0.5
	7/7/2009	<10	<0.5	<0.5	<0.5	<0.5	<1000	<0.5
MW-7	9/17/2003	<10	<0.5	<0.5	9.8	<1000	<0.5	<0.5
	12/9/2003	<25	<1.3	<1.3	8.1	<2500	<1.3	<1.3
	2/26/2004	<10	<0.5	<0.5	9.9	<1000	<0.5	<0.5
	5/21/2004	<10	<0.5	<0.5	<0.5	<1,000	<0.5	<0.5
	8/10/2004	<25	<1.3	<1.3	19	<2500	<1.3	<1.3
	10/19/2004	<100	<5.0	<5.0	11	<10,000	<5.0	<5.0
	1/14/2005	<40	<2.0	<2.0	5.1	<4,000	<2.0	<2.0
	4/14/2005	2.62	<0.5	<0.5	4.57	<1000	<0.5	<0.5
	7/7/2005	55.6	<1.0	<1.0	10.2	<2000	<1.0	<1.0
	11/15/2005	10.6	<0.5	<0.5	2.07	<1000	<0.5	<0.5
	2/8/2006	<10	<0.5	<0.5	2.19	<1000	<0.5	<0.5
	4/27/2006	<10	<0.5	<0.5	2.63	<1000	<0.5	<0.5
	8/1/2006	<10	<0.5	<0.5	<2.0	<1000	<0.5	<0.5
	10/19/2006	<10	<0.5	<0.5	<2.0	<1000	<0.5	<0.5
	1/12/2007	<2.0	<0.5	<0.5	<2.0	<1000	<0.5	<0.5
	4/17/2007	11.6	<0.5	<0.5	<2.0	<1000	<0.5	<0.5
	7/17/2007	13.3	<0.5	<0.5	<2.0	<1000	<0.5	<0.5
	10/16/2007	<2.0	<0.5	<0.5	<2.0	<1000	<0.5	<0.5
	1/17/2008	NA	NA	NA	NA	NA	NA	NA
	4/17/2008	8.63	<0.5	<0.5	<2.0	<1000	<0.5	<0.5
	7/16/2008	<2.0	<0.5	<0.5	<2.0	<1000	<0.5	<0.5
	10/14/2008	<10	<0.5	<0.5	<0.5	<1000	<0.5	<0.5
1/6/2009	<10	<0.5	<0.5	<0.5	<1000	<0.5	<0.5	
4/6/2009	<10	<0.5	<0.5	<0.5	<1000	<0.5	<0.5	
7/7/2009	<10	<0.5	<0.5	<0.5	<0.5	<1000	<0.5	<0.5
SOMA-1	8/10/2004	2300	<6.3	<6.3	53	<13000	<6.3	<6.3
	10/19/2004	2400	<13	<13	36	<25,000	<13	<13
	1/14/2005	530	<3.1	<3.1	7.1	<6,300	<3.1	<3.1
	4/14/2005	<27.5	<5.5	<5.5	<22	<11000	<5.5	<5.5
	7/7/2005	2180	<2.15	<2.15	12.9	<4300	<2.15	<2.15
	11/15/2005	792	<0.5	<0.5	5.01	<1000	<0.5	<0.5

Table 2
Historical Groundwater Analytical Data
Gasoline Oxygenates & Lead Scavengers
3519 Castro Valley Blvd, Castro Valley, CA

Monitoring Well	Date	TBA (µg/L)	DIPE (µg/L)	ETBE (µg/L)	TAME (µg/L)	ETHANOL (µg/L)	1,2-DCA (µg/L)	EDB (µg/L)	
SOMA-1 contd.	2/8/2006	618	<0.5	<0.5	3.67	<1000	<0.5	<0.5	
	4/27/2006	983	<0.5	<0.5	3.48	<1000	<0.5	<0.5	
	8/1/2006	639	<0.5	<0.5	2.27	<1000	<0.5	<0.5	
	10/19/2006	603	<0.5	<0.5	2.25	<1000	<0.5	<0.5	
	1/12/2007	396	<0.5	<0.5	<2.0	<1000	<0.5	<0.5	
	4/17/2007	148	<0.5	<0.5	<2.0	<1000	<0.5	<0.5	
	7/17/2007	555	<0.5	<0.5	<2.0	<1000	<0.5	<0.5	
	10/16/2007	65	<0.5	<0.5	<2.0	<1000	<0.5	<0.5	
	1/17/2008	29.6	<0.5	<0.5	2.06	<1000	<0.5	<0.5	
	4/17/2008	339	<0.5	<0.5	<2.0	<1000	<0.5	<0.5	
	7/16/2008	264	<0.5	<0.5	<2.0	<1000	<0.5	<0.5	
	10/14/2008	250	<0.5	<0.5	<0.5	<1000	<0.5	<0.5	
	1/6/2009	180	<0.5	<0.5	<0.5	<1000	<0.5	<0.5	
	4/6/2009	120	<0.5	<0.5	<0.5	<1000	<0.5	<0.5	
	7/7/2009	250	<0.5	<0.5	<0.5	<0.5	<1000	<0.5	<0.5
	SOMA-2	8/10/2004	<10	<0.5	<0.5	<0.5	<1000	<0.5	<0.5
10/19/2004		<10	<0.5	<0.5	<0.5	<1000	<0.5	<0.5	
1/14/2005		<10	<0.5	<0.5	<0.5	<1000	<0.5	<0.5	
4/14/2005		<2.5	<0.5	<0.5	<2.0	<1000	<0.5	<0.5	
7/7/2005		<10	<0.5	<0.5	<2.0	<1000	<0.5	<0.5	
11/15/2005		<10	<0.5	<0.5	<2.0	<1000	<0.5	<0.5	
2/8/2006		<10	<0.5	<0.5	<2.0	<1000	<0.5	<0.5	
4/27/2006		<10	<0.5	<0.5	<2.0	<1000	<0.5	<0.5	
8/1/2006		<10	<0.5	<0.5	<2.0	<1000	<0.5	<0.5	
10/19/2006		<10	<0.5	<0.5	<2.0	<1000	<0.5	<0.5	
1/12/2007		<2.0	<0.5	<0.5	<2.0	<1000	<0.5	<0.5	
4/17/2007		14.6	<0.5	<0.5	<2.0	<1000	<0.5	<0.5	
7/17/2007		2.58	<0.5	<0.5	<2.0	<1000	<0.5	<0.5	
10/16/2007		<2.0	<0.5	<0.5	<2.0	<1000	<0.5	<0.5	
1/17/2008		<2.0	<0.5	<0.5	<2.0	<1000	<0.5	<0.5	
4/17/2008		<2.0	<0.5	<0.5	<2.0	<1000	<0.5	<0.5	
7/16/2008	<2.0	<0.5	<0.5	<2.0	<1000	<0.5	<0.5		
10/14/2008	<10	<0.5	<0.5	<0.5	<1000	<0.5	<0.5		
1/6/2009	<10	<0.5	<0.5	<0.5	<1000	<0.5	<0.5		
4/6/2009	<10	<0.5	<0.5	<0.5	<1000	<0.5	<0.5		
7/7/2009	<10	<0.5	<0.5	<0.5	<0.5	<1000	<0.5	<0.5	
SOMA-3	8/10/2004	<10	<0.5	<0.5	<0.5	<1000	<0.5	<0.5	
	10/19/2004	<10	<0.5	<0.5	<0.5	<1,000	<0.5	<0.5	

Table 2
Historical Groundwater Analytical Data
Gasoline Oxygenates & Lead Scavengers
3519 Castro Valley Blvd, Castro Valley, CA

Monitoring Well	Date	TBA (µg/L)	DIPE (µg/L)	ETBE (µg/L)	TAME (µg/L)	ETHANOL (µg/L)	1,2-DCA (µg/L)	EDB (µg/L)
SOMA-3 contd.	1/14/2005	<10	<0.5	<0.5	<0.5	<1,000	<0.5	<0.5
	4/14/2005	<2.5	<0.5	<0.5	<2.0	<1000	<0.5	<0.5
	7/7/2005	<10	<0.5	<0.5	<2.0	<1000	<0.5	<0.5
	11/15/2005	<10	<0.5	<0.5	<2.0	<1000	<0.5	<0.5
	2/8/2006	<10	<0.5	<0.5	<2.0	<1000	<0.5	<0.5
	4/27/2006	<10	<0.5	<0.5	<2.0	<1000	<0.5	<0.5
	8/1/2006	<10	<0.5	<0.5	<2.0	<1000	<0.5	<0.5
	10/19/2006	<10	<0.5	<0.5	<2.0	<1000	<0.5	<0.5
	1/12/2007	<2.0	<0.5	<0.5	<2.0	<1000	<0.5	<0.5
	4/17/2007	6.72	<0.5	<0.5	<2.0	<1000	<0.5	<0.5
	7/17/2007	7.6	<0.5	<0.5	<2.0	<1000	<0.5	<0.5
	10/16/2007	9.96	<0.5	<0.5	<2.0	<1000	<0.5	<0.5
	1/17/2008	<2.0	<0.5	<0.5	<2.0	<1000	<0.5	<0.5
	4/17/2008	6.05	<0.5	<0.5	<2.0	<1000	<0.5	<0.5
	7/16/2008	<2.0	<0.5	<0.5	<2.0	<1000	<0.5	<0.5
	10/14/2008	<10	<0.5	<0.5	<0.5	<1000	<0.5	<0.5
	1/6/2009	<10	<0.5	<0.5	<0.5	<1000	<0.5	<0.5
	4/6/2009	<10	<0.5	<0.5	<0.5	<1000	<0.5	<0.5
7/7/2009	<10	<0.5	<0.5	<0.5	<0.5	<1000	<0.5	<0.5
SOMA-4	8/10/2004	<10	<0.5	<0.5	<0.5	<1000	<0.5	<0.5
	10/19/2004	<10	<0.5	<0.5	<0.5	<1,000	<0.5	<0.5
	1/14/2005	<10	<0.5	<0.5	<0.5	<1,000	<0.5	<0.5
	4/14/2005	<2.5	<0.5	<0.5	<2.0	<1000	<0.5	<0.5
	7/7/2005	<10	<0.5	<0.5	<2.0	<1000	<0.5	<0.5
	11/15/2005	<10	<0.5	<0.5	<2.0	<1000	<0.5	<0.5
	2/8/2006	<10	<0.5	<0.5	<2.0	<1000	<0.5	<0.5
	4/27/2006	<10	<0.5	<0.5	<2.0	<1000	<0.5	<0.5
	8/1/2006	<10	<0.5	<0.5	<2.0	<1000	<0.5	<0.5
	10/19/2006	<10	<0.5	<0.5	<2.0	<1000	<0.5	<0.5
	1/12/2007	<2.0	<0.5	<0.5	<2.0	<1000	<0.5	<0.5
	4/17/2007	3.98	<0.5	<0.5	<2.0	<1000	<0.5	<0.5
	7/17/2007	6.31	<0.5	<0.5	<2.0	<1000	<0.5	<0.5
	10/16/2007	<2.0	<0.5	<0.5	<2.0	<1000	<0.5	<0.5
	1/17/2008	<2.0	<0.5	<0.5	<2.0	<1000	<0.5	<0.5
	4/17/2008	<2.0	<0.5	<0.5	<2.0	<1000	<0.5	<0.5
	7/16/2008	<2.0	<0.5	<0.5	<2.0	<1000	<0.5	<0.5
	10/14/2008	<10	<0.5	<0.5	<0.5	<1000	<0.5	<0.5
1/6/2009	<10	<0.5	<0.5	<0.5	<1000	<0.5	<0.5	
4/6/2009	<10	<0.5	<0.5	<0.5	<1000	<0.5	<0.5	
7/7/2009	<10	<0.5	<0.5	<0.5	<0.5	<1000	<0.5	<0.5

Table 2
Historical Groundwater Analytical Data
Gasoline Oxygenates & Lead Scavengers
3519 Castro Valley Blvd, Castro Valley, CA

Monitoring Well	Date	TBA (µg/L)	DIPE (µg/L)	ETBE (µg/L)	TAME (µg/L)	ETHANOL (µg/L)	1,2-DCA (µg/L)	EDB (µg/L)
EB-PMP	1/17/2008	<2.0	<0.5	<0.5	<2.0	<1000	<0.5	<0.5
EB-PRB	1/17/2008	<2.0	<0.5	<0.5	<2.0	<1000	<0.5	<0.5
EB-PMP2	1/17/2008	<2.0	<0.5	<0.5	<2.0	<1000	<0.5	<0.5
EB-PRB2	1/17/2008	<2.0	<0.5	<0.5	<2.0	<1000	<0.5	<0.5

Notes:

< : Not detected above laboratory reporting limit.

NA: Not Analyzed. Due to construction activities in the Third Quarter 2003, which consisted of the replacement of the USTs and dispensers, wells ESE-1 & ESE-2 were inaccessible. Well ESE-2 was inaccessible during the First Quarter 2007, dirt was covered over well. Well MW-7 had a car parked over it and was inaccessible during the First Quarter 2008 monitoring event. The Third Quarter 2003 was the first time that SOMA analyzed groundwater samples at the Site.

The Third Quarter 2004 was the first time that SOMA analyzed groundwater samples at wells SOMA-1 to SOMA-4.

Gasoline Oxygenates:

TBA: tertiary butyl alcohol

DIPE: isopropyl ether

ETBE: ethyl tertiary butyl ether

TAME: methyl tertiary amyl ether

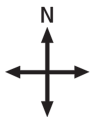
Ethanol

Lead Scavengers:

1,2-DCA: 1,2-Dichloroethane

EDB: 1,2-Dibromoethane

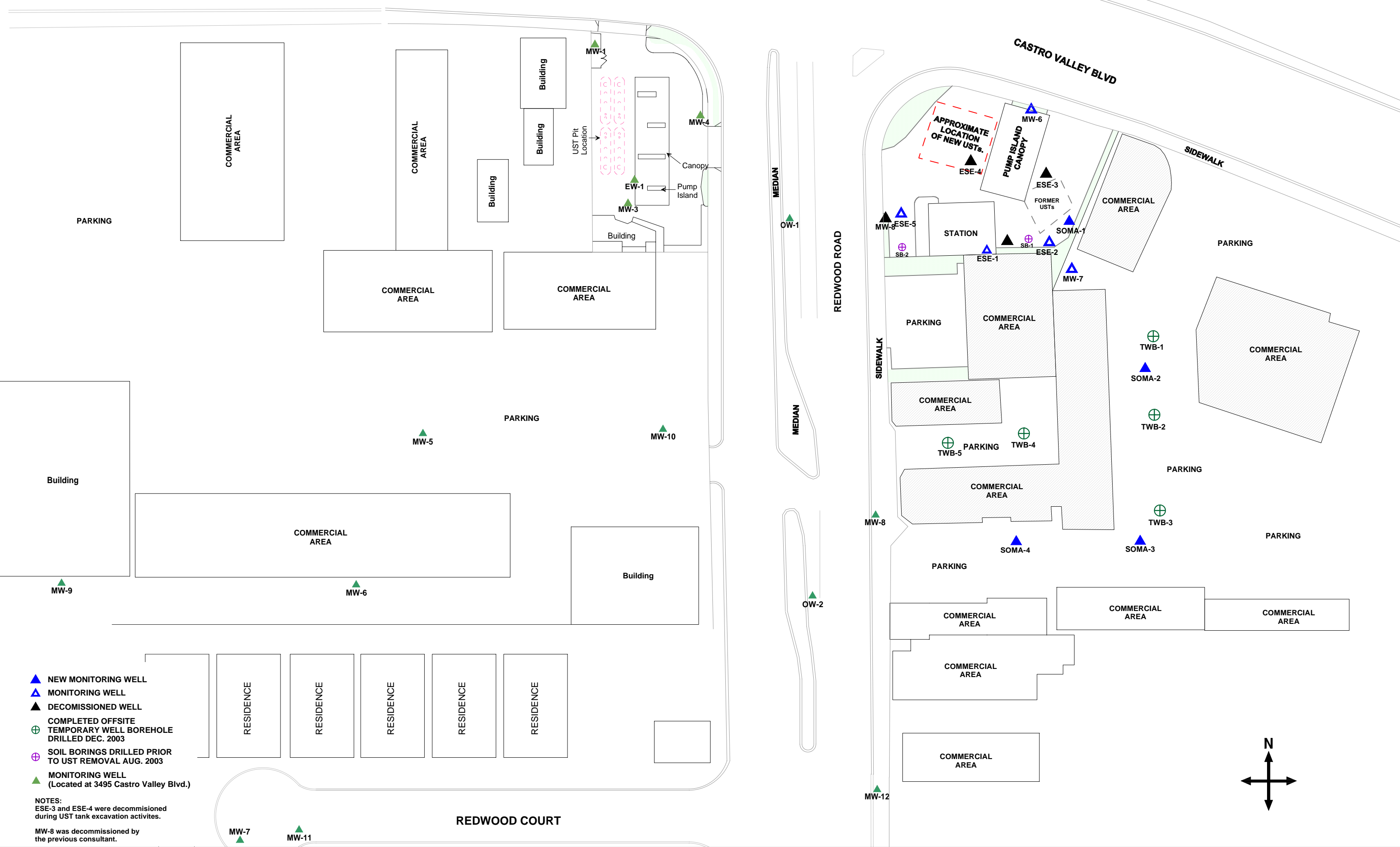
Figures



approximate scale in feet



Figure 1: Site vicinity map.



- ▲ NEW MONITORING WELL
- ▲ MONITORING WELL
- ▲ DECOMMISSIONED WELL
- ⊕ COMPLETED OFFSITE TEMPORARY WELL BOREHOLE DRILLED DEC. 2003
- ⊕ SOIL BORINGS DRILLED PRIOR TO UST REMOVAL AUG. 2003
- ▲ MONITORING WELL (Located at 3495 Castro Valley Blvd.)

NOTES:
 ESE-3 and ESE-4 were decommissioned during UST tank excavation activities.
 MW-8 was decommissioned by the previous consultant.

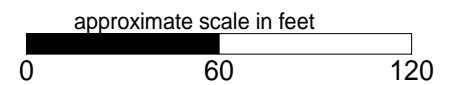


Figure 2: Site map showing locations of existing monitoring wells, decommissioned wells, offsite temporary well boreholes, monitoring wells installed by SOMA, and monitoring wells located at neighboring service station.

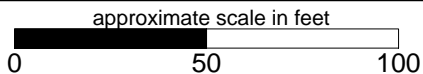
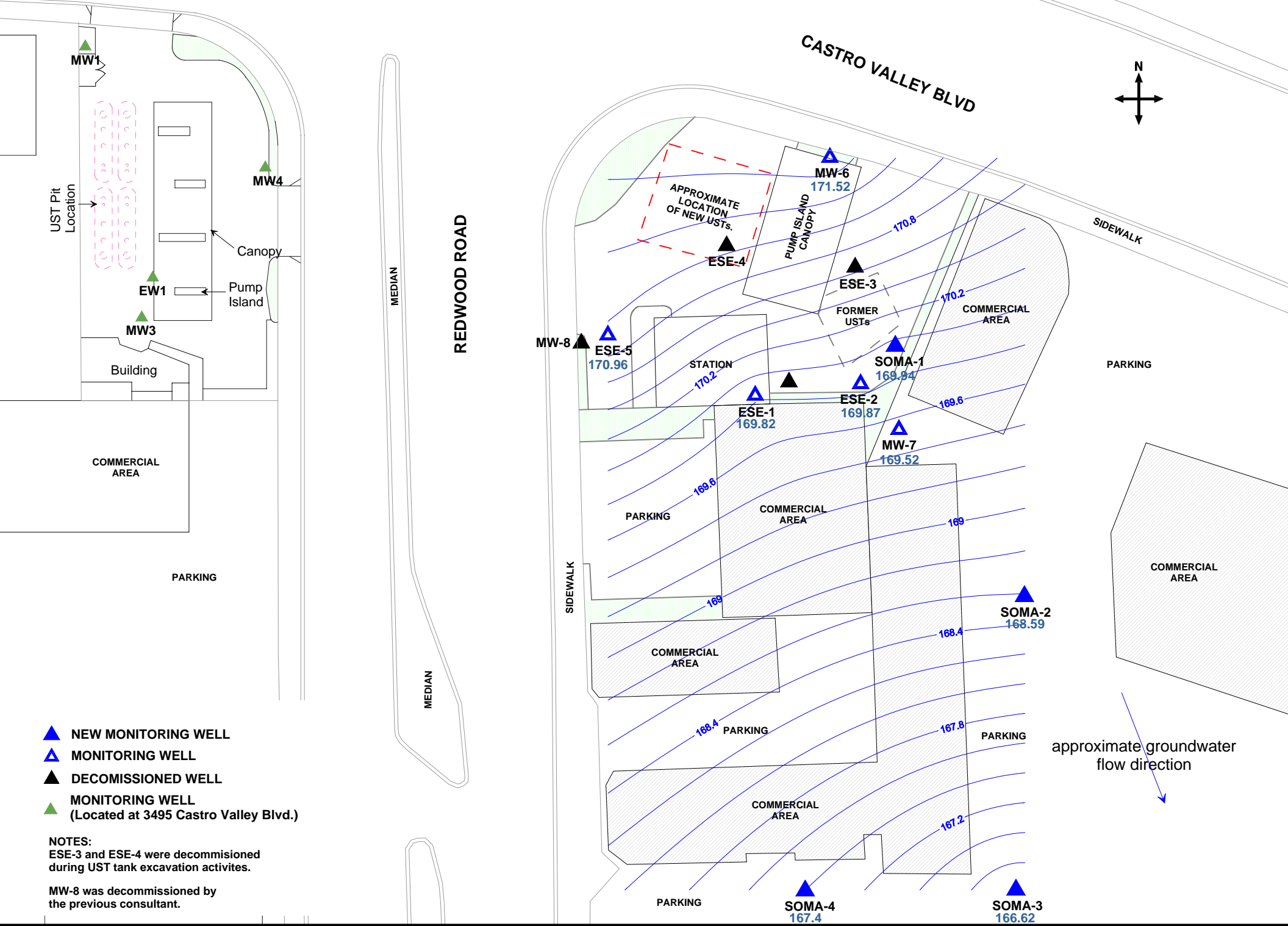


Figure 3: Groundwater Elevation Contour Map in Feet. July 7, 2009

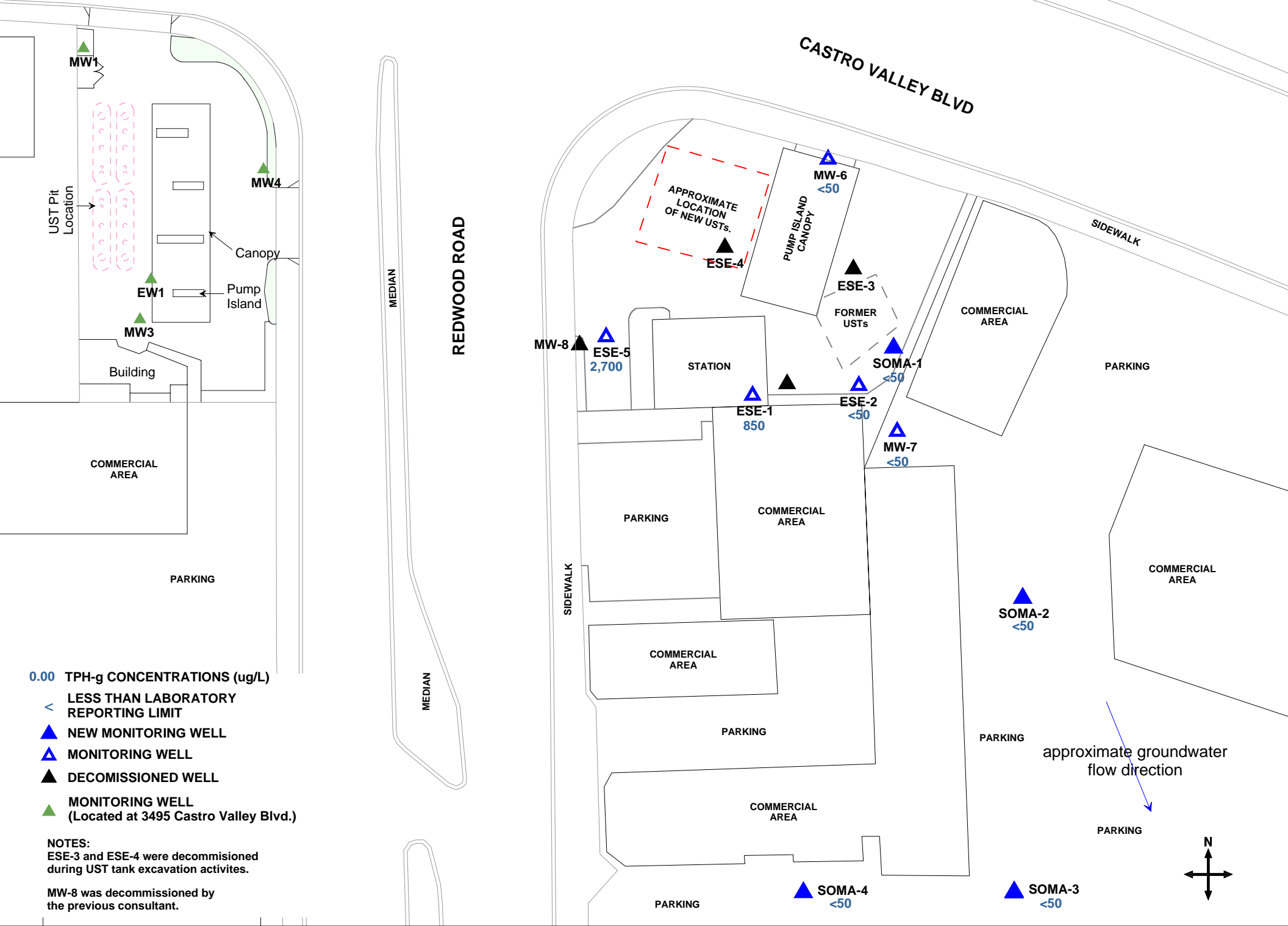


Figure 4: Map of TPH-g Concentrations in Groundwater. July 7, 2009

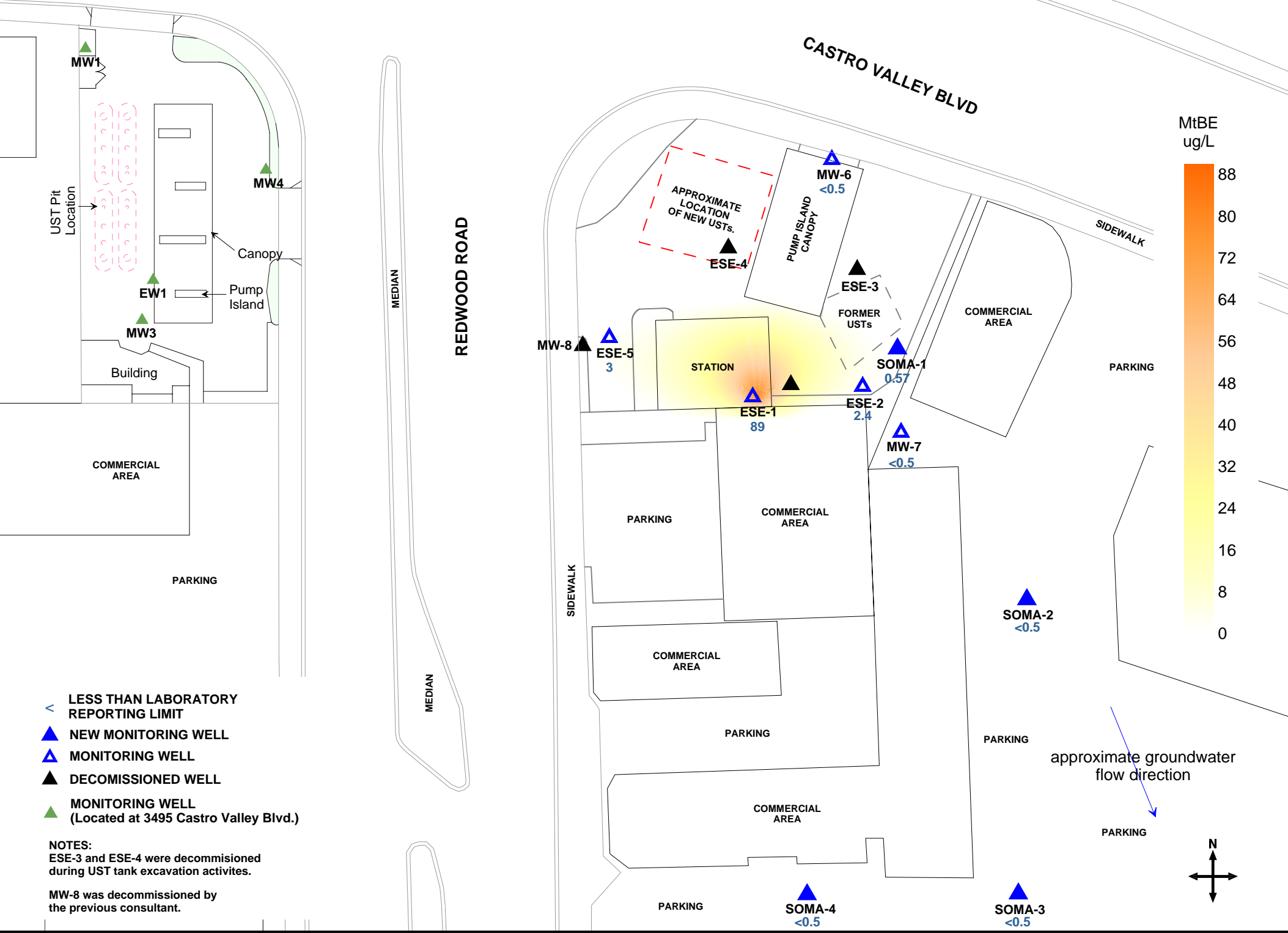
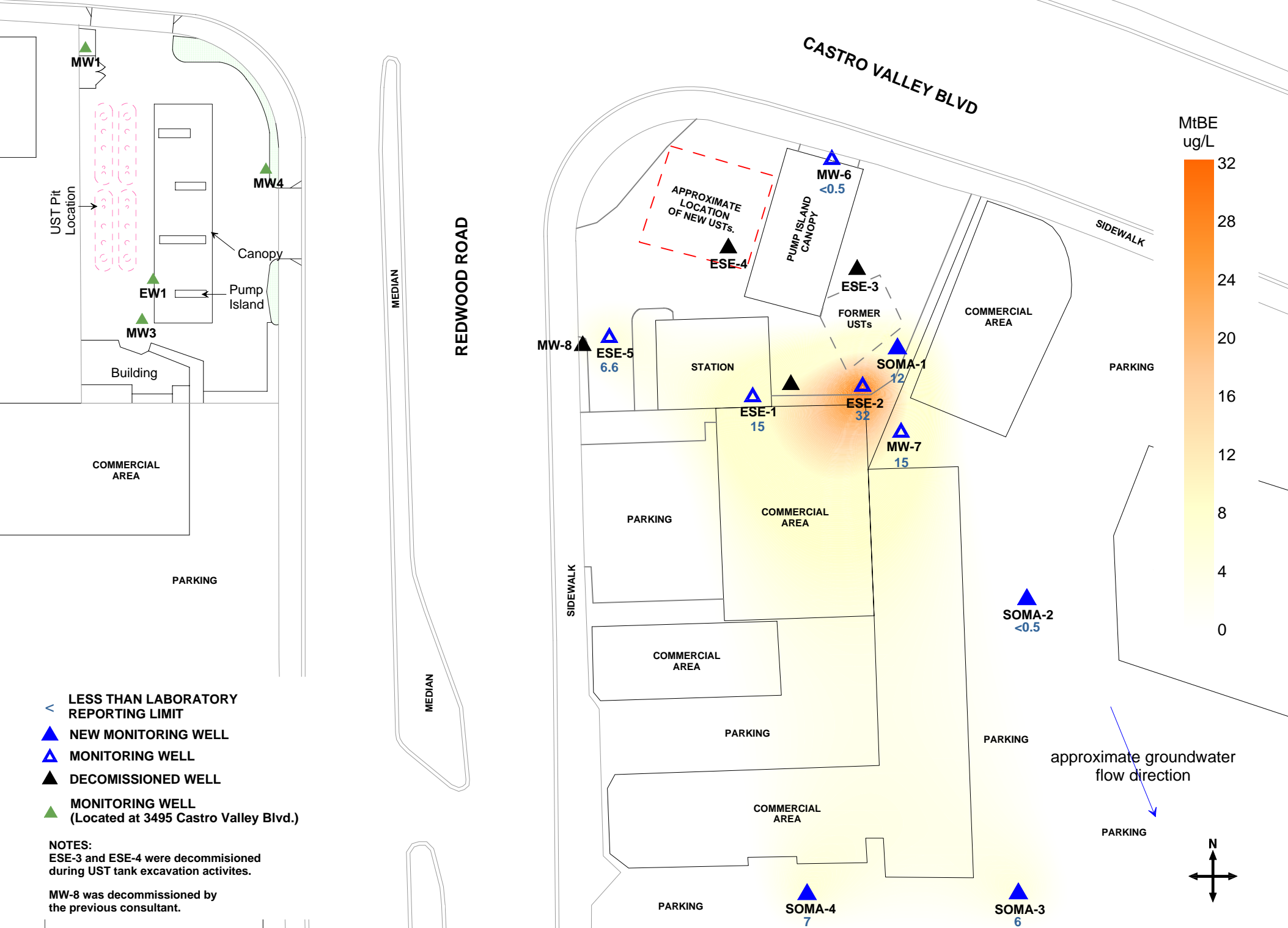


Figure 5: Contour map of benzene Concentrations in Groundwater.
July 7, 2009



- < LESS THAN LABORATORY REPORTING LIMIT
- ▲ NEW MONITORING WELL
- ▲ MONITORING WELL
- ▲ DECOMMISSIONED WELL
- ▲ MONITORING WELL (Located at 3495 Castro Valley Blvd.)

NOTES:
 ESE-3 and ESE-4 were decommissioned during UST tank excavation activities.
 MW-8 was decommissioned by the previous consultant.

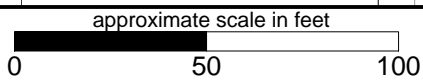
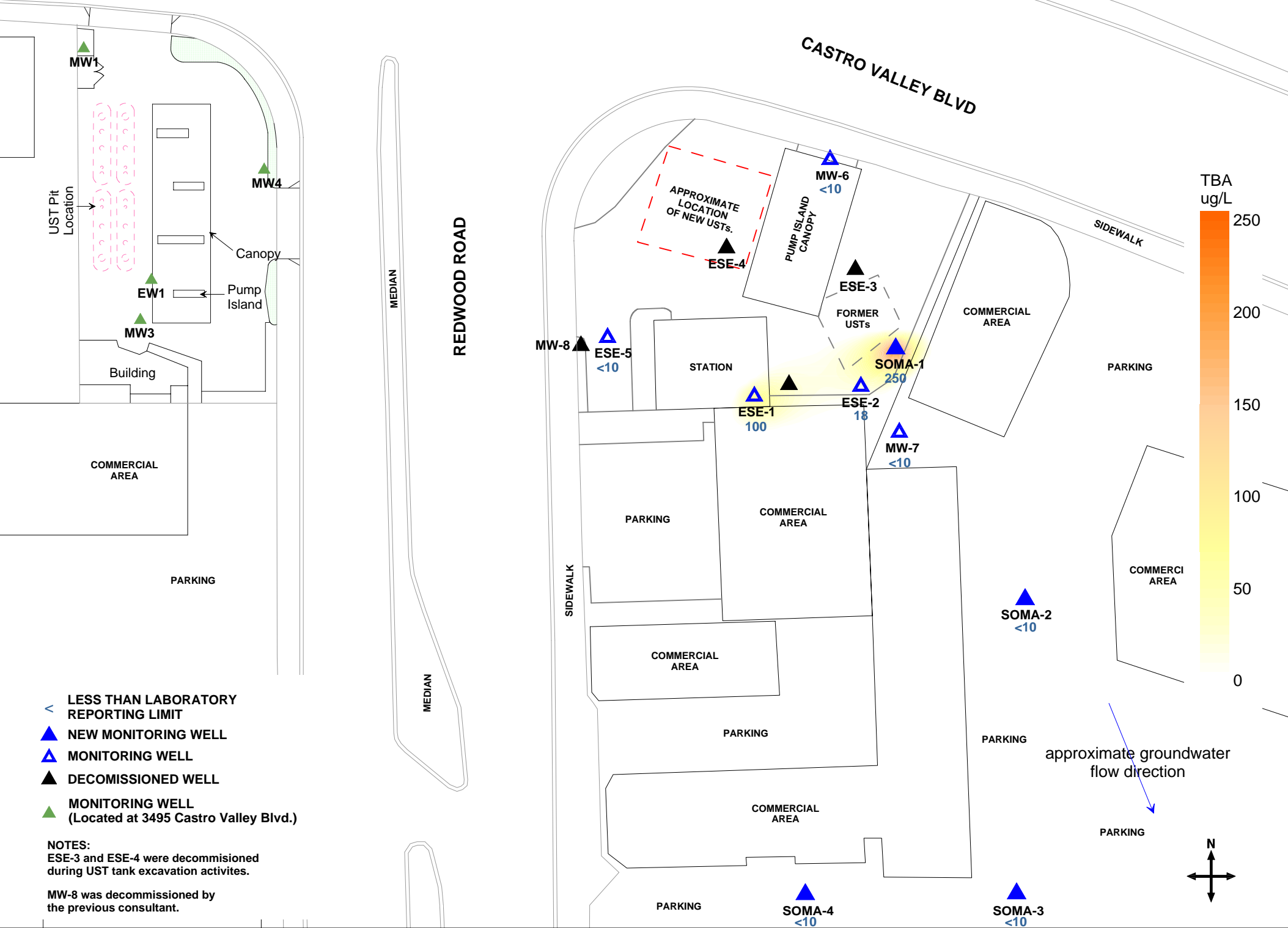


Figure 6: Contour map of MtBE Concentrations in Groundwater (EPA Method 8260B). July 7, 2009





- < LESS THAN LABORATORY REPORTING LIMIT
- ▲ NEW MONITORING WELL
- ▲ MONITORING WELL
- ▲ DECOMMISSIONED WELL
- ▲ MONITORING WELL (Located at 3495 Castro Valley Blvd.)

NOTES:
 ESE-3 and ESE-4 were decommissioned during UST tank excavation activities.
 MW-8 was decommissioned by the previous consultant.

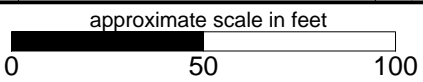


Figure 7: Contour map of TBA Concentrations in Groundwater.
 July 7, 2009



Appendix A

Standard Operating Procedures for Conducting Groundwater Monitoring Activities

Standard Operating Procedures for Conducting Groundwater Monitoring Activities

Water Level Measurements

Prior to measurement of groundwater depth at each monitoring well, equalization with the surrounding aquifer must be achieved. Initially, the well cap is removed and the pressure is allowed to dissipate, creating a more stable water table level within the well. After about 10-15 minutes, once the water level in the well stabilizes, the depth to groundwater in each monitoring well is measured from the top of the casing to the nearest 0.01 foot using an electric sounder.

Purging and Field Measurements

Prior to sample collection, each monitoring well is purged using a battery-operated, 2-inch-diameter pump (Model ES-60 DC). To ensure that final samples are in equilibrium with, and representative of, the surrounding groundwater, during purging several samples are taken for field measurements of pH, temperature and electrical conductivity (EC). These parameters are measured with a Hanna pH, conductivity, and temperature meter. Equipment is calibrated on-site using standard solutions and procedures provided by the manufacturer.

The pH of groundwater has an effect on the activity of microbial populations in the groundwater. The groundwater temperature affects the metabolic activity of bacteria. The groundwater EC is directly related to the concentration of total dissolved solids (TDS) in solution.

Purging continues until these parameters stabilize or three casing volumes are purged.

Sampling

For sampling purposes, after purging a disposable polyethylene bailer is used to collect sufficient samples from each monitoring well for laboratory analyses. Groundwater samples are transferred to 40-mL VOA vials and preserved with hydrochloric acid. The vials are sealed to prevent air bubbles from forming within the headspace. For TPH-d analysis, groundwater samples are collected using 1-L, amber, nonpreserved glass containers. Samples are placed in an ice-filled cooler and maintained at 4°C. A chain of custody form for all samples is prepared to accompany the samples, which are promptly delivered to a California state-certified analytical laboratory.

Appendix B

Table of Elevations and Coordinates for
Monitoring Wells and
Field Measurements of Groundwater Sample
Properties for Third Quarter 2009

**TABLE OF ELEVATIONS & COORDINATES
ON MONITORING WELLS**

SOMA ENVIRONMENTAL
3519 CASTRO VALLEY BLVD., CASTRO VALLEY

WELL ID #	NORTHING (FT.) / LATITUDE (D.M.S.)	EASTING (FT.) / LONGITUDE (D.M.S.)	ELEVATION (FT.)	DESCRIPTION
ESE-1	2079361.15	6106465.13	180.24	2" PVC, NOTVH N. SIDE
	N 37° 41' 42.07112"	W 122° 04' 24.07899"	180.71	SET PUNCH NORTH SIDE RIM
			180.69	PAVEMENT NORTH SIDE
ESE-2	2079361.30	6106501.97	180.79	2" PVC, NOTVH N. SIDE
	N 37° 41' 42.07873"	W 122° 04' 23.62071"	181.16	SET PUNCH NORTH SIDE RIM
			181.14	CONC. NORTH SIDE
ESE-5	2079381.46	6106387.63	178.80	2" PVC, NOTVH N. SIDE
	N 37° 41' 42.25902"	W 122° 04' 25.04739"	179.07	FELT X ON NORTH SIDE RIM
			179.10	CONC. NORTH SIDE
MW-6	2079451.94	6106492.77	181.80	2" PVC, NOTVH N. SIDE
	N 37° 41' 42.97323"	W 122° 04' 23.75412"	181.97	SET PUNCH NORTH SIDE RIM
			181.88	GROUND NORTH SIDE
MW-7	2079337.18	6106516.12	179.11	2" PVC, NOTVH N. SIDE
	N 37° 41' 41.84264"	W 122° 04' 23.43963"	179.55	SET PUNCH NORTH SIDE RIM
			179.49	CONC. NORTH SIDE
SOMA-1	2079370.39	6106506.79	180.95	2" PVC, NOTVH N. SIDE
	N 37° 41' 42.16939"	W 122° 04' 23.56265"	181.25	SET PUNCH NORTH SIDE RIM
			181.22	CONC. NORTH SIDE
SOMA-2	2079297.44	6106567.02	178.99	2" PVC, NOTVH N. SIDE
	N 37° 41' 41.45825"	W 122° 04' 22.79809"	179.29	SET PUNCH NORTH SIDE RIM
			179.28	CONC. NORTH SIDE
SOMA-3	2079130.83	6106567.48	176.81	2" PVC, NOTVH N. SIDE
	N 37° 41' 39.81129"	W 122° 04' 22.75752"	177.18	SET PUNCH NORTH SIDE RIM
			177.12	PAVEMENT NORTH SIDE
SOMA-4	2079141.57	6106464.22	176.94	2" PVC, NOTVH N. SIDE
	N 37° 41' 39.9003"	W 122° 04' 24.04438"	177.43	SET PUNCH NORTH SIDE RIM
			177.44	PAVEMENT NORTH SIDE

Kier & Wright Engineers Surveyors, Inc.

6/21/2005
10:19 AM
3519 Castro Valley

1233 Quarry Lane, Suite 145, Pleasanton, CA 94566
Phone (925) 249-6555,
Fax (925) 249-6563

**TABLE OF ELEVATIONS & COORDINATES
ON MONITORING WELLS**

SOMA ENVIRONMENTAL
3519 CASTRO VALLEY BLVD., CASTRO VALLEY

ADDITIONAL POINTS

PT#	NORTHING (FT.)	EASTING (FT.)	ELEVATION (FT.)	DESCRIPTION
320	2079386.87	6106408.85	N/A	BL. INTX
321	2079387.18	6106455.22	N/A	BL. INTX
331	2079351.06	6106409.27	N/A	BL<
318	2079384.55	6106369.10	N/A	DWY
329	2079106.74	6106368.58	N/A	DWY
330	2079148.74	6106368.66	N/A	DWY
317	2079424.72	6106369.39	N/A	DWY E-C
315	2079481.34	6106432.38	N/A	DWY PCC
310	2079415.57	6106624.48	N/A	DWY POC
311	2079423.23	6106606.56	N/A	DWY POC
312	2079447.91	6106542.76	N/A	DWY POC
313	2079461.36	6106504.01	N/A	DWY POC
314	2079472.67	6106468.07	N/A	DWY POC
316	2079466.76	6106389.18	N/A	HCRMP POC
319	2079237.38	6106368.78	N/A	TC

BENCH MARK: NGS Bench mark No.PID# HT0223

THE STATION IS LOCATED IN THE CITY OF HAYWARD AT THE RAILROAD CROSSING OF THE SOUTHERN PACIFIC RAIL-ROAD AND BLOSSOM WAY, IN THE TOP OF THE NORTHWEST CURB OF BLOSSOM WAY.

TO REACH THE STATION FROM THE JUNCTION OF U S HIGHWAY 880 ON WEST A STREET, GO SOUTHEAST ON WEST A STREET FOR 0.2 MILES TO A CROSSROAD, HATHAWAY AVE ON THE LEFT, SANTA CLARA STREET ON THE RIGHT. TURN LEFT, NORTH, ON HATHAWAY AVENUE AND CONTINUE FOR 0.7 MILES TO WEST BLOSSOM WAY. TURN RIGHT, NORTH, ON WEST BLOSSOM WAY AND CONTINUE FOR 0.25 MILES TO THE STATION ON THE LEFT, JUST PAST THE RAIL-ROAD TRACKS.

THE STATION IS 48.95 M (160.6 FT) NORTHEAST OF THE NORTHEAST RAIL, 7.01 M NORTHWEST OF THE CENTER OF BLOSSOM WAY, 0.24 M (0.8 FT) NORTH OF THE NORTH CORNER OF A STEEL GRATE IN THE STREET, 5.6 M (18.5 FT) SOUTHWEST OF A POWER POLE AND 0.12 M (0.4 FT) HIGHER THAN THE STREET.

Elevation =56.33 FEET NAVD88 Datum
ADJUSTED

HORIZONTAL CONTROL:

PID - HT0223

NORTHING =2,072,670.26 , EASTING = 6,095,650.79 FEET; EPOCH DATE = 1998.50

PID - HT 2583

Kier & Wright Engineers Surveyors, Inc.

6/21/2005
10:19 AM
3519 Castro Valley

1233 Quarry Lane, Suite 145, Pleasanton, CA 94566
Phone (925) 249-6555,
Fax (925) 249-6563

**TABLE OF ELEVATIONS & COORDINATES
ON MONITORING WELLS**

SOMA ENVIRONMENTAL
3519 CASTRO VALLEY BLVD., CASTRO VALLEY

NORTHING =2,082,510.30 , EASTING = 6,116,892.13 FEET; EPOCH DATE = 1991.35

Coordinate values are based on the California Coordinate System, Zone III NAD 83 Datum.



ENVIRONMENTAL ENGINEERING, INC

Well No.: ESE-1
 Casing Diameter: 2 inches
 Depth of Well: 28.00 feet
 Top of Casing Elevation: 180.24 feet
 Depth to Groundwater: 10.42 feet
 Groundwater Elevation: 169.82 feet
 Water Column Height: 17.58 feet
 Purged Volume: 6 gallons

Project No.: 2761
 Address: 3519 Castro Valley Blvd
 Castro Valley, CA
 Date: July 7, 2009
 Sampler: Lizzie Hightower
Ruchi Mathur

Purging Method: Bailer Pump
 Sampling Method: Bailer Pump
 Color: No Yes Describe: _____
 Sheen: No Yes Describe: _____
 Odor: No Yes Describe: slight petro

Field Measurements:

Time	Vol (gallons)	pH	Temp (°C)	E.C. (µs/cm)
1143	Started Purging			
1144	2	6.63	21.6	786
1145	4	6.68	20.8	776
1146	6	6.60	20.5	771
1151	sampled			



ENVIRONMENTAL ENGINEERING, INC

Well No.: ESE-2
 Casing Diameter: 2 inches
 Depth of Well: 26.50 feet
 Top of Casing Elevation: 180.79 feet
 Depth to Groundwater: 10.92 feet
 Groundwater Elevation: 169.87 feet
 Water Column Height: 15.58 feet
 Purged Volume: 8 gallons

Project No.: 2761
 Address: 3519 Castro Valley Blvd
 Castro Valley, CA
 Date: July 7, 2009
 Sampler: Lizzie Hightower
Ruchi Mathur

Purging Method: Bailer Pump
 Sampling Method: Bailer Pump
 Color: No Yes Describe: _____
 Sheen: No Yes Describe: _____
 Odor: No Yes Describe: _____

Field Measurements:

Time	Vol (gallons)	pH	Temp (°C)	E.C. (µs/cm)
11:25	Started Purging			
11:26	2	6.42	20.8	872
11:27	4	6.63	20.1	848
11:28	6	6.64	19.9	837
11:29	8	6.64	19.9	831
11:34	Sampled			



ENVIRONMENTAL ENGINEERING, INC

Well No.: ESE-5
 Casing Diameter: 2 inches
 Depth of Well: 23.80 feet
 Top of Casing Elevation: 178.80 feet
 Depth to Groundwater: 7.84 feet
 Groundwater Elevation: 170.96 feet
 Water Column Height: 15.96 feet
 Purged Volume: 6 gallons

Project No.: 2761
 Address: 3519 Castro Valley Blvd
 Castro Valley, CA
 Date: July 7, 2009
 Sampler: Lizzie Hightower
Ruchi Mathur

Purging Method: Bailer Pump
 Sampling Method: Bailer Pump

Color: No Yes Describe: _____
 Sheen: No Yes Describe: _____
 Odor: No Yes Describe: Slight petro

Field Measurements:

Time	Vol (gallons)	pH	Temp (°C)	E.C. (µs/cm)
12:02	Started Purging			
12:03	2	6.60	22.6	793
12:04	4	6.61	22.5	789
12:05	6	6.62	22.0	764
12:10	Sampled			



ENVIRONMENTAL ENGINEERING, INC

Well No.: MW-6
 Casing Diameter: 2 inches
 Depth of Well: 30.00 feet
 Top of Casing Elevation: 181.80 feet
 Depth to Groundwater: 10.28 feet
 Groundwater Elevation: 171.52 feet
 Water Column Height: 19.72 feet
 Purged Volume: 10 gallons

Project No.: 2761
 Address: 3519 Castro Valley Blvd
 Castro Valley, CA
 Date: July 7, 2009
 Sampler: Lizzie Hightower
Ruchi Mathur

Purging Method: Bailer Pump
 Sampling Method: Bailer Pump

Color: No Yes Describe: _____
 Sheen: No Yes Describe: _____
 Odor: No Yes Describe: _____

Field Measurements:

Time	Vol (gallons)	pH	Temp (°C)	E.C. (µs/cm)
10:46	Started purging well			
10:47	2	6.80	20.0	600
10:49	6	6.67	19.8	602
10:50	8	6.70	19.8	604
10:51	10	6.71	19.9	606
10:56	Sampled			



ENVIRONMENTAL ENGINEERING, INC

Well No.: MW-7
 Casing Diameter: 2 inches
 Depth of Well: 29.36 feet
 Top of Casing Elevation: 179.11 feet
 Depth to Groundwater: 9.59 feet
 Groundwater Elevation: 169.52 feet
 Water Column Height: 19.77 feet
 Purged Volume: 10 gallons

Project No.: 2761
 Address: 3519 Castro Valley Blvd
 Castro Valley, CA
 Date: July 7, 2009
 Sampler: Lizzie Hightower
Ruchi Mathur

Purging Method: Bailer Pump
 Sampling Method: Bailer Pump
 Color: No Yes Describe: _____
 Sheen: No Yes Describe: _____
 Odor: No Yes Describe: _____

Field Measurements:

Time	Vol (gallons)	pH	Temp (°C)	E.C. (µs/cm)
09:35	Started purging well			
09:36	2	6.92	19.7	669
09:38	6	6.78	19.5	668
09:39	8	6.65	19.3	669
09:40	10	6.64	19.3	670
09:45	sampled			



ENVIRONMENTAL ENGINEERING, INC

Well No.: SOMA-1
 Casing Diameter: 2 inches
 Depth of Well: 29.74 feet
 Top of Casing Elevation: 180.95 feet
 Depth to Groundwater: 11.01 feet
 Groundwater Elevation: 169.94 feet
 Water Column Height: 18.73 feet
 Purged Volume: 10 gallons

Project No.: 2761
 Address: 3519 Castro Valley Blvd
 Castro Valley, CA
 Date: July 7, 2009
 Sampler: Lizzie Hightower
Ruchi Mathur

Purging Method: Bailer Pump
 Sampling Method: Bailer Pump

Color: No Yes Describe: _____
 Sheen: No Yes Describe: _____
 Odor: No Yes Describe: _____

Field Measurements:

Time	Vol (gallons)	pH	Temp (°C)	E.C. (µs/cm)
1105	Started Purging			
1106	2	6.54	20.07	832
1108	6	6.58	20.2	835
1109	8	6.59	19.9	835
1110	10	6.60	19.9	830
1115	sampled			



ENVIRONMENTAL ENGINEERING, INC

Well No.: SOMA-2
 Casing Diameter: 2 inches
 Depth of Well: 14.70 feet
 Top of Casing Elevation: 178.99 feet
 Depth to Groundwater: 10.40 feet
 Groundwater Elevation: 168.59 feet
 Water Column Height: 4.30 feet
 Purged Volume: 2 gallons

Project No.: 2761
 Address: 3519 Castro Valley Blvd
 Castro Valley, CA
 Date: July 7, 2009
 Sampler: Lizzie Hightower
Ruchi Mathur

Purging Method: Bailer Pump
 Sampling Method: Bailer Pump

Color: No Yes Describe: cloudy brown
 Sheen: No Yes Describe: _____
 Odor: No Yes Describe: _____

Field Measurements:

Time	Vol (gallons)	pH	Temp (°C)	E.C. (µs/cm)
950	Started Purging			
953	0.5	7.02	20.0	503
955	1.0	7.01	19.7	503
957	1.5	7.00	19.7	504
958	2.0	7.00	19.6	503
1003	sampled			



ENVIRONMENTAL ENGINEERING, INC

Well No.: SOMA-3
 Casing Diameter: 2 inches
 Depth of Well: 14.70 feet
 Top of Casing Elevation: 176.81 feet
 Depth to Groundwater: 10.19 feet
 Groundwater Elevation: 166.62 feet
 Water Column Height: 4.51 feet
 Purged Volume: 2 gallons

Project No.: 2761
 Address: 3519 Castro Valley Blvd
 Castro Valley, CA
 Date: July 7, 2009
 Sampler: Lizzie Hightower
Ruchi Mathur

Purging Method: Bailer Pump
 Sampling Method: Bailer Pump

Color: No Yes Describe: Cloudy / Brownish
 Sheen: No Yes Describe: _____
 Odor: No Yes Describe: _____

Field Measurements:

Time	Vol (gallons)	pH	Temp (°C)	E.C. (µs/cm)
10:11	Started purging well			
10:12	0.5	6.42	21.5	785
10:13	1.0	6.55	21.7	797
10:14	1.5	6.62	21.8	798
10:16	2.0	6.63	21.9	804
10:21	Sampled			



ENVIRONMENTAL ENGINEERING, INC

Well No.: SOMA-4
 Casing Diameter: 2 inches
 Depth of Well: 22.65 feet
 Top of Casing Elevation: 176.94 feet
 Depth to Groundwater: 9.54 feet
 Groundwater Elevation: 167.40 feet
 Water Column Height: 13.11 feet
 Purged Volume: 6 gallons

Project No.: 2761
 Address: 3519 Castro Valley Blvd
 Castro Valley, CA
 Date: July 7, 2009
 Sampler: Lizzie Hightower
Ruchi Mathur

Purging Method: Bailer Pump
 Sampling Method: Bailer Pump

Color: No Yes Describe: _____
 Sheen: No Yes Describe: _____
 Odor: No Yes Describe: Slight petro

Field Measurements:

Time	Vol (gallons)	pH	Temp (°C)	E.C. (µs/cm)
1026	Started Purging			
1027	2	6.37	21.6	685
1028	4	6.36	21.2	680
1029	6	6.36	21.3	683
1034	Sampled			

Appendix C

Chain of Custody Form and Laboratory Report
for the
Third Quarter 2009 Monitoring Event



Curtis & Tompkins, Ltd., Analytical Laboratories, Since 1878

2323 Fifth Street, Berkeley, CA 94710, Phone (510) 486-0900

Laboratory Job Number 213329
ANALYTICAL REPORT

SOMA Environmental Engineering Inc.
6620 Owens Dr.
Pleasanton, CA 94588

Project : 2761
Location : 3519 Castro Valley Blvd.
Level : II

Table with 2 columns: Sample ID and Lab ID. Rows include ESE-1 through ESE-5, MW-6 through MW-7, and SOMA-1 through SOMA-4.

This data package has been reviewed for technical correctness and completeness. Release of this data has been authorized by the Laboratory Manager or the Manager's designee, as verified by the following signatures. The results contained in this report meet all requirements of NELAC and pertain only to those samples which were submitted for analysis. This report may be reproduced only in its entirety.

Signature: [Handwritten Signature]
Project Manager

Date: 07/14/2009

Signature: [Handwritten Signature]
Senior Program Manager

Date: 07/14/2009

NELAP # 01107CA

CASE NARRATIVE

Laboratory number: 213329
Client: SOMA Environmental Engineering Inc.
Project: 2761
Location: 3519 Castro Valley Blvd.
Request Date: 07/07/09
Samples Received: 07/07/09

This data package contains sample and QC results for nine water samples, requested for the above referenced project on 07/07/09. The samples were received cold and intact.

Volatile Organics by GC/MS (EPA 8260B):
No analytical problems were encountered.

CHAIN OF CUSTODY

Curtis & Tompkins, Ltd.

Analytical Laboratory Since 1878
 2323 Fifth Street
 Berkeley, CA 94710
 (510)486-0900 Phone
 (510)486-0532 Fax

C&T LOGIN # 213329

Analyses

Sampler: Lizzie Hightower/Ruchi Mathur

Project No: 2761

Report To: Joyce Bobek

Project Name: 3519 Castro Valley Blvd., Castro Valley Company: SOMA Environmental

Turnaround Time: Standard

Telephone: 925-734-6400

Fax: 925-734-6401

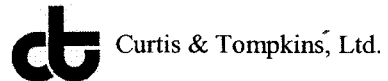
Lab No.	Sample ID.	Sampling Date	Time	Matrix			# of Containers	Preservative				TPHg, BTEX, MtBE 8260B	Gasoline Oxygenates & Lead Scavengers	Ethanol
				Soil	Water	Waste		HCL	H ₂ SO ₄	HNO ₃	ICE			
1	ESE-1	7/7/09	11:51	*			4-VOAs	*			*			
2	ESE-2	↓	11:34	*			4-VOAs	*			*			
3	ESE-5		12:10	*			4-VOAs	*			*			
4	MW-6		10:56	*			4-VOAs	*			*			
5	MW-7		09:45	*			4-VOAs	*			*			
6	SOMA-1		11:15	*			4-VOAs	*			*			
7	SOMA-2		10:03	*			4-VOAs	*			*			
8	SOMA-3		10:21	*			4-VOAs	*			*			
9	SOMA-4		10:34	*			4-VOAs	*			*			

Notes: **EDF OUTPUT REQUIRED**
 GASOLINE OXYGENATES: TBA, DIPE, ETBE, TAME
 LEAD SCAVENGERS: 1,2-DCA, EDB

RELINQUISHED BY:
E. Hightower 13:18
7/7/09 DATE/TIME

RECEIVED BY:
Pat Langley 7/7/09 3:18
 DATE/TIME

COOLER RECEIPT CHECKLIST



Login # 213329 Date Received 7/7/09 Number of coolers 1
Client SOMX Project 3519 CASTRO VALLEY BLVD., CASTRO VALLEY
Date Opened 7/7/09 By (print) M. Villanueva (sign) [Signature]
Date Logged in [Signature] By (print) [Signature] (sign) [Signature]

1. Did cooler come with a shipping slip (airbill, etc) YES NO
Shipping info

2A. Were custody seals present? ... YES (circle) on cooler on samples YES NO
How many Name Date

2B. Were custody seals intact upon arrival? YES NO N/A

3. Were custody papers dry and intact when received? YES NO

4. Were custody papers filled out properly (ink, signed, etc)? YES NO

5. Is the project identifiable from custody papers? (If so fill out top of form) YES NO

6. Indicate the packing in cooler: (if other, describe)
Bubble Wrap Foam blocks Bags None
Cloth material Cardboard Styrofoam Paper towels

7. Temperature documentation:
Type of ice used: Wet Blue/Gel None Temp(C)
Samples Received on ice & cold without a temperature blank
Samples received on ice directly from the field. Cooling process had begun

8. Were Method 5035 sampling containers present? YES NO
If YES, what time were they transferred to freezer?

9. Did all bottles arrive unbroken/unopened? YES NO

10. Are samples in the appropriate containers for indicated tests? YES NO

11. Are sample labels present, in good condition and complete? YES NO

12. Do the sample labels agree with custody papers? YES NO

13. Was sufficient amount of sample sent for tests requested? YES NO

14. Are the samples appropriately preserved? YES NO N/A

15. Are bubbles > 6mm absent in VOA samples? YES NO N/A

16. Was the client contacted concerning this sample delivery? YES NO
If YES, Who was called? By Date:

COMMENTS

Gasoline by GC/MS			
Lab #:	213329	Location:	3519 Castro Valley Blvd.
Client:	SOMA Environmental Engineering Inc.	Prep:	EPA 5030B
Project#:	2761	Analysis:	EPA 8260B
Field ID:	ESE-1	Diln Fac:	1.000
Lab ID:	213329-001	Sampled:	07/07/09
Matrix:	Water	Received:	07/07/09
Units:	ug/L		

Analyte	Result	RL	Batch#	Analyzed
Gasoline C7-C12	850 Y	50	152728	07/10/09
tert-Butyl Alcohol (TBA)	100	10	152729	07/09/09
Isopropyl Ether (DIPE)	ND	0.50	152729	07/09/09
Ethyl tert-Butyl Ether (ETBE)	ND	0.50	152729	07/09/09
Methyl tert-Amyl Ether (TAME)	ND	0.50	152729	07/09/09
Ethanol	ND	1,000	152729	07/09/09
MTBE	15	0.50	152729	07/09/09
1,2-Dichloroethane	ND	0.50	152729	07/09/09
Benzene	89	0.50	152729	07/09/09
Toluene	1.9	0.50	152729	07/09/09
1,2-Dibromoethane	ND	0.50	152729	07/09/09
Ethylbenzene	7.8	0.50	152729	07/09/09
m,p-Xylenes	12	0.50	152729	07/09/09
o-Xylene	3.1	0.50	152729	07/09/09

Surrogate	%REC	Limits	Batch#	Analyzed
Dibromofluoromethane	109	80-122	152729	07/09/09
1,2-Dichloroethane-d4	124	77-137	152729	07/09/09
Toluene-d8	99	80-120	152729	07/09/09
Bromofluorobenzene	104	80-125	152729	07/09/09

Y= Sample exhibits chromatographic pattern which does not resemble standard
 ND= Not Detected
 RL= Reporting Limit

Gasoline by GC/MS			
Lab #:	213329	Location:	3519 Castro Valley Blvd.
Client:	SOMA Environmental Engineering Inc.	Prep:	EPA 5030B
Project#:	2761	Analysis:	EPA 8260B
Field ID:	ESE-2	Diln Fac:	1.000
Lab ID:	213329-002	Sampled:	07/07/09
Matrix:	Water	Received:	07/07/09
Units:	ug/L		

Analyte	Result	RL	Batch#	Analyzed
Gasoline C7-C12	ND	50	152682	07/08/09
tert-Butyl Alcohol (TBA)	18	10	152729	07/09/09
Isopropyl Ether (DIPE)	ND	0.50	152729	07/09/09
Ethyl tert-Butyl Ether (ETBE)	ND	0.50	152729	07/09/09
Methyl tert-Amyl Ether (TAME)	0.56	0.50	152729	07/09/09
Ethanol	ND	1,000	152729	07/09/09
MTBE	32	0.50	152729	07/09/09
1,2-Dichloroethane	ND	0.50	152729	07/09/09
Benzene	2.4	0.50	152729	07/09/09
Toluene	ND	0.50	152729	07/09/09
1,2-Dibromoethane	ND	0.50	152729	07/09/09
Ethylbenzene	ND	0.50	152729	07/09/09
m,p-Xylenes	ND	0.50	152729	07/09/09
o-Xylene	ND	0.50	152729	07/09/09

Surrogate	%REC	Limits	Batch#	Analyzed
Dibromofluoromethane	112	80-122	152729	07/09/09
1,2-Dichloroethane-d4	125	77-137	152729	07/09/09
Toluene-d8	99	80-120	152729	07/09/09
Bromofluorobenzene	102	80-125	152729	07/09/09

ND= Not Detected
 RL= Reporting Limit

Gasoline by GC/MS			
Lab #:	213329	Location:	3519 Castro Valley Blvd.
Client:	SOMA Environmental Engineering Inc.	Prep:	EPA 5030B
Project#:	2761	Analysis:	EPA 8260B
Field ID:	ESE-5	Diln Fac:	1.000
Lab ID:	213329-003	Sampled:	07/07/09
Matrix:	Water	Received:	07/07/09
Units:	ug/L		

Analyte	Result	RL	Batch#	Analyzed
Gasoline C7-C12	2,700 Y	50	152682	07/08/09
tert-Butyl Alcohol (TBA)	ND	10	152729	07/09/09
Isopropyl Ether (DIPE)	ND	0.50	152729	07/09/09
Ethyl tert-Butyl Ether (ETBE)	ND	0.50	152729	07/09/09
Methyl tert-Amyl Ether (TAME)	ND	0.50	152729	07/09/09
Ethanol	ND	1,000	152729	07/09/09
MTBE	6.6	0.50	152729	07/09/09
1,2-Dichloroethane	ND	0.50	152729	07/09/09
Benzene	3.0	0.50	152729	07/09/09
Toluene	ND	0.50	152729	07/09/09
1,2-Dibromoethane	ND	0.50	152729	07/09/09
Ethylbenzene	2.3	0.50	152729	07/09/09
m,p-Xylenes	ND	0.50	152729	07/09/09
o-Xylene	ND	0.50	152729	07/09/09

Surrogate	%REC	Limits	Batch#	Analyzed
Dibromofluoromethane	106	80-122	152729	07/09/09
1,2-Dichloroethane-d4	123	77-137	152729	07/09/09
Toluene-d8	101	80-120	152729	07/09/09
Bromofluorobenzene	105	80-125	152729	07/09/09

Y= Sample exhibits chromatographic pattern which does not resemble standard
 ND= Not Detected
 RL= Reporting Limit

Gasoline by GC/MS			
Lab #:	213329	Location:	3519 Castro Valley Blvd.
Client:	SOMA Environmental Engineering Inc.	Prep:	EPA 5030B
Project#:	2761	Analysis:	EPA 8260B
Field ID:	MW-6	Diln Fac:	1.000
Lab ID:	213329-004	Sampled:	07/07/09
Matrix:	Water	Received:	07/07/09
Units:	ug/L		

Analyte	Result	RL	Batch#	Analyzed
Gasoline C7-C12	ND	50	152682	07/08/09
tert-Butyl Alcohol (TBA)	ND	10	152729	07/09/09
Isopropyl Ether (DIPE)	ND	0.50	152729	07/09/09
Ethyl tert-Butyl Ether (ETBE)	ND	0.50	152729	07/09/09
Methyl tert-Amyl Ether (TAME)	ND	0.50	152729	07/09/09
Ethanol	ND	1,000	152729	07/09/09
MTBE	ND	0.50	152729	07/09/09
1,2-Dichloroethane	ND	0.50	152729	07/09/09
Benzene	ND	0.50	152729	07/09/09
Toluene	ND	0.50	152729	07/09/09
1,2-Dibromoethane	ND	0.50	152729	07/09/09
Ethylbenzene	ND	0.50	152729	07/09/09
m,p-Xylenes	ND	0.50	152729	07/09/09
o-Xylene	ND	0.50	152729	07/09/09

Surrogate	%REC	Limits	Batch#	Analyzed
Dibromofluoromethane	108	80-122	152729	07/09/09
1,2-Dichloroethane-d4	118	77-137	152729	07/09/09
Toluene-d8	101	80-120	152729	07/09/09
Bromofluorobenzene	100	80-125	152729	07/09/09

ND= Not Detected
 RL= Reporting Limit

Gasoline by GC/MS			
Lab #:	213329	Location:	3519 Castro Valley Blvd.
Client:	SOMA Environmental Engineering Inc.	Prep:	EPA 5030B
Project#:	2761	Analysis:	EPA 8260B
Field ID:	MW-7	Diln Fac:	1.000
Lab ID:	213329-005	Sampled:	07/07/09
Matrix:	Water	Received:	07/07/09
Units:	ug/L		

Analyte	Result	RL	Batch#	Analyzed
Gasoline C7-C12	ND	50	152682	07/08/09
tert-Butyl Alcohol (TBA)	ND	10	152729	07/09/09
Isopropyl Ether (DIPE)	ND	0.50	152729	07/09/09
Ethyl tert-Butyl Ether (ETBE)	ND	0.50	152729	07/09/09
Methyl tert-Amyl Ether (TAME)	ND	0.50	152729	07/09/09
Ethanol	ND	1,000	152729	07/09/09
MTBE	15	0.50	152729	07/09/09
1,2-Dichloroethane	ND	0.50	152729	07/09/09
Benzene	ND	0.50	152729	07/09/09
Toluene	ND	0.50	152729	07/09/09
1,2-Dibromoethane	ND	0.50	152729	07/09/09
Ethylbenzene	ND	0.50	152729	07/09/09
m,p-Xylenes	ND	0.50	152729	07/09/09
o-Xylene	ND	0.50	152729	07/09/09

Surrogate	%REC	Limits	Batch#	Analyzed
Dibromofluoromethane	110	80-122	152729	07/09/09
1,2-Dichloroethane-d4	114	77-137	152729	07/09/09
Toluene-d8	99	80-120	152729	07/09/09
Bromofluorobenzene	104	80-125	152729	07/09/09

ND= Not Detected
 RL= Reporting Limit

Gasoline by GC/MS			
Lab #:	213329	Location:	3519 Castro Valley Blvd.
Client:	SOMA Environmental Engineering Inc.	Prep:	EPA 5030B
Project#:	2761	Analysis:	EPA 8260B
Field ID:	SOMA-1	Diln Fac:	1.000
Lab ID:	213329-006	Sampled:	07/07/09
Matrix:	Water	Received:	07/07/09
Units:	ug/L		

Analyte	Result	RL	Batch#	Analyzed
Gasoline C7-C12	ND	50	152682	07/08/09
tert-Butyl Alcohol (TBA)	250	10	152729	07/09/09
Isopropyl Ether (DIPE)	ND	0.50	152729	07/09/09
Ethyl tert-Butyl Ether (ETBE)	ND	0.50	152729	07/09/09
Methyl tert-Amyl Ether (TAME)	ND	0.50	152729	07/09/09
Ethanol	ND	1,000	152729	07/09/09
MTBE	12	0.50	152729	07/09/09
1,2-Dichloroethane	ND	0.50	152729	07/09/09
Benzene	0.57	0.50	152729	07/09/09
Toluene	ND	0.50	152729	07/09/09
1,2-Dibromoethane	ND	0.50	152729	07/09/09
Ethylbenzene	1.2	0.50	152729	07/09/09
m,p-Xylenes	0.91	0.50	152729	07/09/09
o-Xylene	ND	0.50	152729	07/09/09

Surrogate	%REC	Limits	Batch#	Analyzed
Dibromofluoromethane	110	80-122	152729	07/09/09
1,2-Dichloroethane-d4	119	77-137	152729	07/09/09
Toluene-d8	99	80-120	152729	07/09/09
Bromofluorobenzene	103	80-125	152729	07/09/09

ND= Not Detected
 RL= Reporting Limit

Gasoline by GC/MS			
Lab #:	213329	Location:	3519 Castro Valley Blvd.
Client:	SOMA Environmental Engineering Inc.	Prep:	EPA 5030B
Project#:	2761	Analysis:	EPA 8260B
Field ID:	SOMA-2	Diln Fac:	1.000
Lab ID:	213329-007	Sampled:	07/07/09
Matrix:	Water	Received:	07/07/09
Units:	ug/L		

Analyte	Result	RL	Batch#	Analyzed
Gasoline C7-C12	ND	50	152682	07/08/09
tert-Butyl Alcohol (TBA)	ND	10	152729	07/09/09
Isopropyl Ether (DIPE)	ND	0.50	152729	07/09/09
Ethyl tert-Butyl Ether (ETBE)	ND	0.50	152729	07/09/09
Methyl tert-Amyl Ether (TAME)	ND	0.50	152729	07/09/09
Ethanol	ND	1,000	152729	07/09/09
MTBE	ND	0.50	152729	07/09/09
1,2-Dichloroethane	ND	0.50	152729	07/09/09
Benzene	ND	0.50	152729	07/09/09
Toluene	ND	0.50	152729	07/09/09
1,2-Dibromoethane	ND	0.50	152729	07/09/09
Ethylbenzene	ND	0.50	152729	07/09/09
m,p-Xylenes	ND	0.50	152729	07/09/09
o-Xylene	ND	0.50	152729	07/09/09

Surrogate	%REC	Limits	Batch#	Analyzed
Dibromofluoromethane	111	80-122	152729	07/09/09
1,2-Dichloroethane-d4	125	77-137	152729	07/09/09
Toluene-d8	100	80-120	152729	07/09/09
Bromofluorobenzene	103	80-125	152729	07/09/09

ND= Not Detected
 RL= Reporting Limit

Gasoline by GC/MS			
Lab #:	213329	Location:	3519 Castro Valley Blvd.
Client:	SOMA Environmental Engineering Inc.	Prep:	EPA 5030B
Project#:	2761	Analysis:	EPA 8260B
Field ID:	SOMA-3	Diln Fac:	1.000
Lab ID:	213329-008	Sampled:	07/07/09
Matrix:	Water	Received:	07/07/09
Units:	ug/L		

Analyte	Result	RL	Batch#	Analyzed
Gasoline C7-C12	ND	50	152682	07/08/09
tert-Butyl Alcohol (TBA)	ND	10	152729	07/09/09
Isopropyl Ether (DIPE)	ND	0.50	152729	07/09/09
Ethyl tert-Butyl Ether (ETBE)	ND	0.50	152729	07/09/09
Methyl tert-Amyl Ether (TAME)	ND	0.50	152729	07/09/09
Ethanol	ND	1,000	152729	07/09/09
MTBE	6.0	0.50	152729	07/09/09
1,2-Dichloroethane	ND	0.50	152729	07/09/09
Benzene	ND	0.50	152729	07/09/09
Toluene	ND	0.50	152729	07/09/09
1,2-Dibromoethane	ND	0.50	152729	07/09/09
Ethylbenzene	ND	0.50	152729	07/09/09
m,p-Xylenes	ND	0.50	152729	07/09/09
o-Xylene	ND	0.50	152729	07/09/09

Surrogate	%REC	Limits	Batch#	Analyzed
Dibromofluoromethane	111	80-122	152729	07/09/09
1,2-Dichloroethane-d4	125	77-137	152729	07/09/09
Toluene-d8	99	80-120	152729	07/09/09
Bromofluorobenzene	103	80-125	152729	07/09/09

ND= Not Detected
 RL= Reporting Limit

Gasoline by GC/MS			
Lab #:	213329	Location:	3519 Castro Valley Blvd.
Client:	SOMA Environmental Engineering Inc.	Prep:	EPA 5030B
Project#:	2761	Analysis:	EPA 8260B
Field ID:	SOMA-4	Diln Fac:	1.000
Lab ID:	213329-009	Sampled:	07/07/09
Matrix:	Water	Received:	07/07/09
Units:	ug/L		

Analyte	Result	RL	Batch#	Analyzed
Gasoline C7-C12	ND	50	152682	07/08/09
tert-Butyl Alcohol (TBA)	ND	10	152729	07/09/09
Isopropyl Ether (DIPE)	ND	0.50	152729	07/09/09
Ethyl tert-Butyl Ether (ETBE)	ND	0.50	152729	07/09/09
Methyl tert-Amyl Ether (TAME)	ND	0.50	152729	07/09/09
Ethanol	ND	1,000	152729	07/09/09
MTBE	7.0	0.50	152729	07/09/09
1,2-Dichloroethane	ND	0.50	152729	07/09/09
Benzene	ND	0.50	152729	07/09/09
Toluene	ND	0.50	152729	07/09/09
1,2-Dibromoethane	ND	0.50	152729	07/09/09
Ethylbenzene	ND	0.50	152729	07/09/09
m,p-Xylenes	ND	0.50	152729	07/09/09
o-Xylene	ND	0.50	152729	07/09/09

Surrogate	%REC	Limits	Batch#	Analyzed
Dibromofluoromethane	112	80-122	152729	07/09/09
1,2-Dichloroethane-d4	124	77-137	152729	07/09/09
Toluene-d8	100	80-120	152729	07/09/09
Bromofluorobenzene	104	80-125	152729	07/09/09

ND= Not Detected
 RL= Reporting Limit

Batch QC Report

Gasoline by GC/MS			
Lab #:	213329	Location:	3519 Castro Valley Blvd.
Client:	SOMA Environmental Engineering Inc.	Prep:	EPA 5030B
Project#:	2761	Analysis:	EPA 8260B
Type:	BLANK	Diln Fac:	1.000
Lab ID:	QC502737	Batch#:	152682
Matrix:	Water	Analyzed:	07/08/09
Units:	ug/L		

Analyte	Result	RL
Gasoline C7-C12	ND	50
tert-Butyl Alcohol (TBA)	ND	10
Isopropyl Ether (DIPE)	ND	0.50
Ethyl tert-Butyl Ether (ETBE)	ND	0.50
Methyl tert-Amyl Ether (TAME)	ND	0.50
Ethanol	ND	1,000
MTBE	ND	0.50
1,2-Dichloroethane	ND	0.50
Benzene	ND	0.50
Toluene	ND	0.50
1,2-Dibromoethane	ND	0.50
Ethylbenzene	ND	0.50
m,p-Xylenes	ND	0.50
o-Xylene	ND	0.50

Surrogate	%REC	Limits
Dibromofluoromethane	94	80-122
1,2-Dichloroethane-d4	104	77-137
Toluene-d8	97	80-120
Bromofluorobenzene	92	80-125

ND= Not Detected
 RL= Reporting Limit

Batch QC Report

Gasoline by GC/MS			
Lab #:	213329	Location:	3519 Castro Valley Blvd.
Client:	SOMA Environmental Engineering Inc.	Prep:	EPA 5030B
Project#:	2761	Analysis:	EPA 8260B
Matrix:	Water	Batch#:	152682
Units:	ug/L	Analyzed:	07/08/09
Diln Fac:	1.000		

Type: BS Lab ID: QC502740

Analyte	Spiked	Result	%REC	Limits
Gasoline C7-C12	900.0	966.8	107	80-120

Surrogate	%REC	Limits
Dibromofluoromethane	90	80-122
1,2-Dichloroethane-d4	97	77-137
Toluene-d8	97	80-120
Bromofluorobenzene	87	80-125

Type: BSD Lab ID: QC502741

Analyte	Spiked	Result	%REC	Limits	RPD	Lim
Gasoline C7-C12	900.0	968.3	108	80-120	0	20

Surrogate	%REC	Limits
Dibromofluoromethane	90	80-122
1,2-Dichloroethane-d4	95	77-137
Toluene-d8	95	80-120
Bromofluorobenzene	87	80-125

RPD= Relative Percent Difference

Batch QC Report

Gasoline by GC/MS			
Lab #:	213329	Location:	3519 Castro Valley Blvd.
Client:	SOMA Environmental Engineering Inc.	Prep:	EPA 5030B
Project#:	2761	Analysis:	EPA 8260B
Type:	BLANK	Diln Fac:	1.000
Lab ID:	QC502917	Batch#:	152728
Matrix:	Water	Analyzed:	07/10/09
Units:	ug/L		

Analyte	Result	RL
Gasoline C7-C12	ND	50
tert-Butyl Alcohol (TBA)	ND	10
Isopropyl Ether (DIPE)	ND	0.50
Ethyl tert-Butyl Ether (ETBE)	ND	0.50
Methyl tert-Amyl Ether (TAME)	ND	0.50
Ethanol	ND	1,000
MTBE	ND	0.50
1,2-Dichloroethane	ND	0.50
Benzene	ND	0.50
Toluene	ND	0.50
1,2-Dibromoethane	ND	0.50
Ethylbenzene	ND	0.50
m,p-Xylenes	ND	0.50
o-Xylene	ND	0.50

Surrogate	%REC	Limits
Dibromofluoromethane	104	80-122
1,2-Dichloroethane-d4	93	77-137
Toluene-d8	93	80-120
Bromofluorobenzene	102	80-125

ND= Not Detected
 RL= Reporting Limit

Batch QC Report

Gasoline by GC/MS			
Lab #:	213329	Location:	3519 Castro Valley Blvd.
Client:	SOMA Environmental Engineering Inc.	Prep:	EPA 5030B
Project#:	2761	Analysis:	EPA 8260B
Type:	BLANK	Diln Fac:	1.000
Lab ID:	QC502920	Batch#:	152729
Matrix:	Water	Analyzed:	07/09/09
Units:	ug/L		

Analyte	Result	RL
Gasoline C7-C12	NA	
tert-Butyl Alcohol (TBA)	ND	10
Isopropyl Ether (DIPE)	ND	0.50
Ethyl tert-Butyl Ether (ETBE)	ND	0.50
Methyl tert-Amyl Ether (TAME)	ND	0.50
Ethanol	ND	1,000
MTBE	ND	0.50
1,2-Dichloroethane	ND	0.50
Benzene	ND	0.50
Toluene	ND	0.50
1,2-Dibromoethane	ND	0.50
Ethylbenzene	ND	0.50
m,p-Xylenes	ND	0.50
o-Xylene	ND	0.50

Surrogate	%REC	Limits
Dibromofluoromethane	110	80-122
1,2-Dichloroethane-d4	121	77-137
Toluene-d8	99	80-120
Bromofluorobenzene	105	80-125

NA= Not Analyzed
 ND= Not Detected
 RL= Reporting Limit

Batch QC Report

Gasoline by GC/MS			
Lab #:	213329	Location:	3519 Castro Valley Blvd.
Client:	SOMA Environmental Engineering Inc.	Prep:	EPA 5030B
Project#:	2761	Analysis:	EPA 8260B
Matrix:	Water	Batch#:	152729
Units:	ug/L	Analyzed:	07/09/09
Diln Fac:	1.000		

Type: BS Lab ID: QC502921

Analyte	Spiked	Result	%REC	Limits
tert-Butyl Alcohol (TBA)	100.0	91.65	92	55-151
Isopropyl Ether (DIPE)	20.00	18.46	92	65-131
Ethyl tert-Butyl Ether (ETBE)	20.00	18.21	91	75-128
Methyl tert-Amyl Ether (TAME)	20.00	17.59	88	80-121
MTBE	20.00	16.86	84	73-122
1,2-Dichloroethane	20.00	23.53	118	73-141
Benzene	20.00	19.10	96	80-120
Toluene	20.00	19.37	97	80-120
1,2-Dibromoethane	20.00	18.05	90	80-120
Ethylbenzene	20.00	20.52	103	80-121
m,p-Xylenes	40.00	39.19	98	80-122
o-Xylene	20.00	19.13	96	80-120

Surrogate	%REC	Limits
Dibromofluoromethane	107	80-122
1,2-Dichloroethane-d4	118	77-137
Toluene-d8	100	80-120
Bromofluorobenzene	103	80-125

Type: BSD Lab ID: QC502922

Analyte	Spiked	Result	%REC	Limits	RPD	Lim
tert-Butyl Alcohol (TBA)	100.0	92.16	92	55-151	1	21
Isopropyl Ether (DIPE)	20.00	18.88	94	65-131	2	20
Ethyl tert-Butyl Ether (ETBE)	20.00	18.64	93	75-128	2	20
Methyl tert-Amyl Ether (TAME)	20.00	18.19	91	80-121	3	20
MTBE	20.00	17.43	87	73-122	3	20
1,2-Dichloroethane	20.00	23.75	119	73-141	1	20
Benzene	20.00	19.35	97	80-120	1	20
Toluene	20.00	19.81	99	80-120	2	20
1,2-Dibromoethane	20.00	18.64	93	80-120	3	20
Ethylbenzene	20.00	20.55	103	80-121	0	20
m,p-Xylenes	40.00	39.27	98	80-122	0	20
o-Xylene	20.00	18.95	95	80-120	1	20

Surrogate	%REC	Limits
Dibromofluoromethane	107	80-122
1,2-Dichloroethane-d4	119	77-137
Toluene-d8	101	80-120
Bromofluorobenzene	103	80-125

RPD= Relative Percent Difference

Batch QC Report

Gasoline by GC/MS			
Lab #:	213329	Location:	3519 Castro Valley Blvd.
Client:	SOMA Environmental Engineering Inc.	Prep:	EPA 5030B
Project#:	2761	Analysis:	EPA 8260B
Matrix:	Water	Batch#:	152728
Units:	ug/L	Analyzed:	07/10/09
Diln Fac:	1.000		

Type: BS Lab ID: QC503064

Analyte	Spiked	Result	%REC	Limits
Gasoline C7-C12	1,000	1,035	104	80-120

Surrogate	%REC	Limits
Dibromofluoromethane	103	80-122
1,2-Dichloroethane-d4	91	77-137
Toluene-d8	94	80-120
Bromofluorobenzene	101	80-125

Type: BSD Lab ID: QC503065

Analyte	Spiked	Result	%REC	Limits	RPD	Lim
Gasoline C7-C12	1,000	1,049	105	80-120	1	20

Surrogate	%REC	Limits
Dibromofluoromethane	101	80-122
1,2-Dichloroethane-d4	91	77-137
Toluene-d8	94	80-120
Bromofluorobenzene	99	80-125

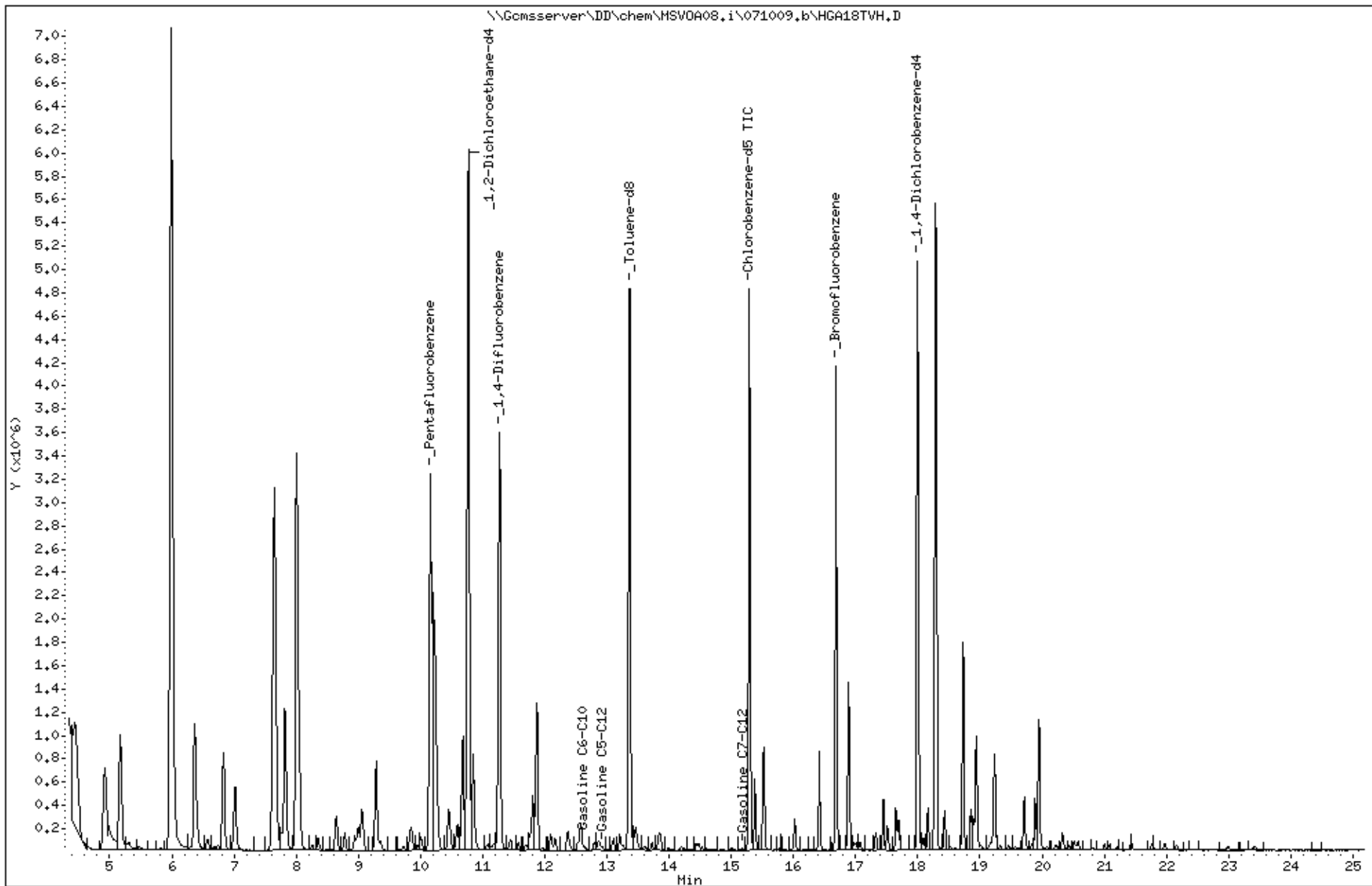
RPD= Relative Percent Difference

Date : 10-JUL-2009 16:55
Client ID: DYNA P&T
Sample Info: S,213329-001

Instrument: MSV0A08.i

Operator: voc
Column diameter: 2.00

Column phase:



Date : 08-JUL-2009 19:55

Client ID: DYNA P&T

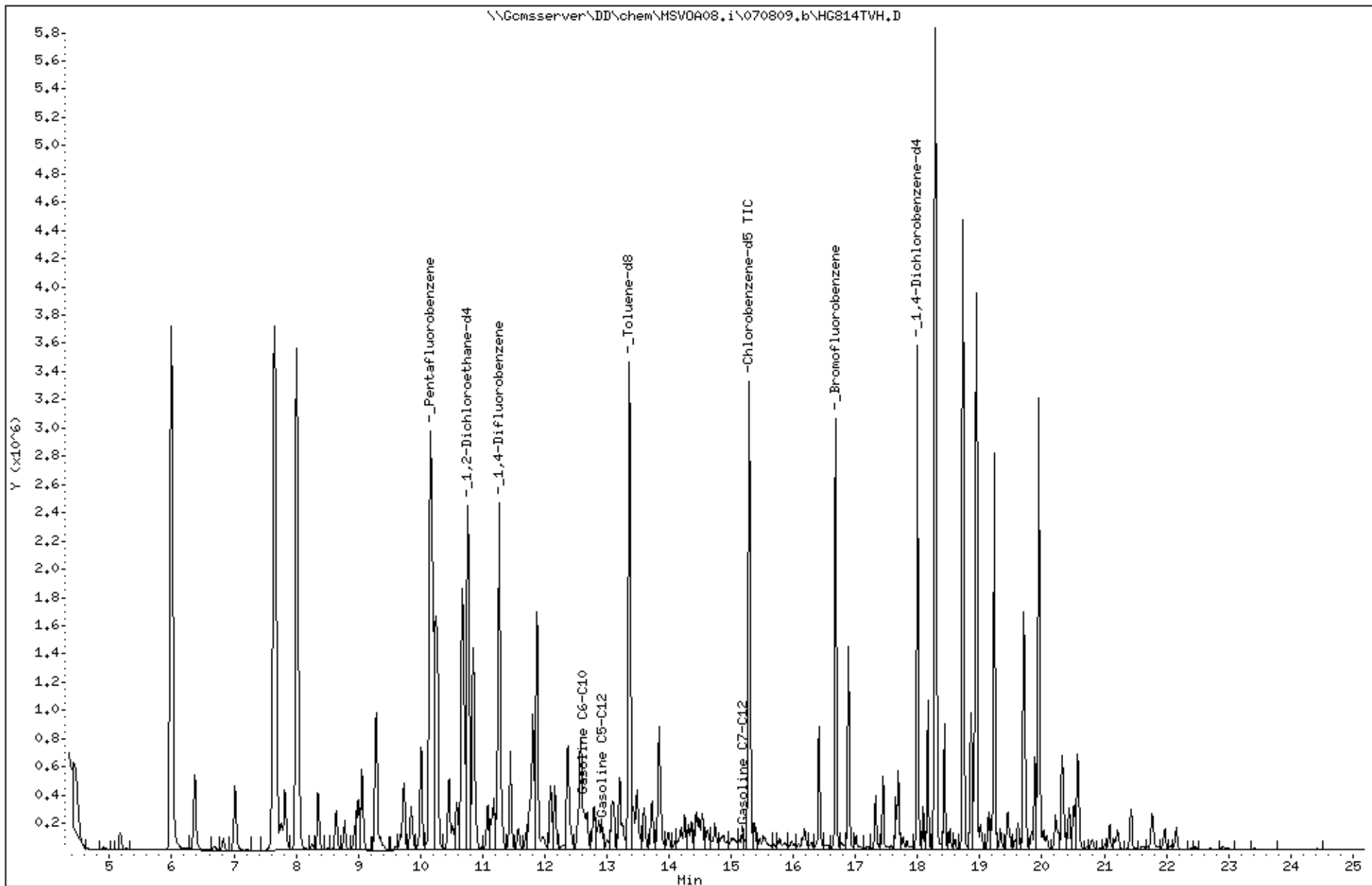
Sample Info: S,213329-003

Instrument: MSV0A08.i

Operator: voc

Column diameter: 2.00

Column phase:



Date : 08-JUL-2009 16:47

Client ID: DYNA P&T

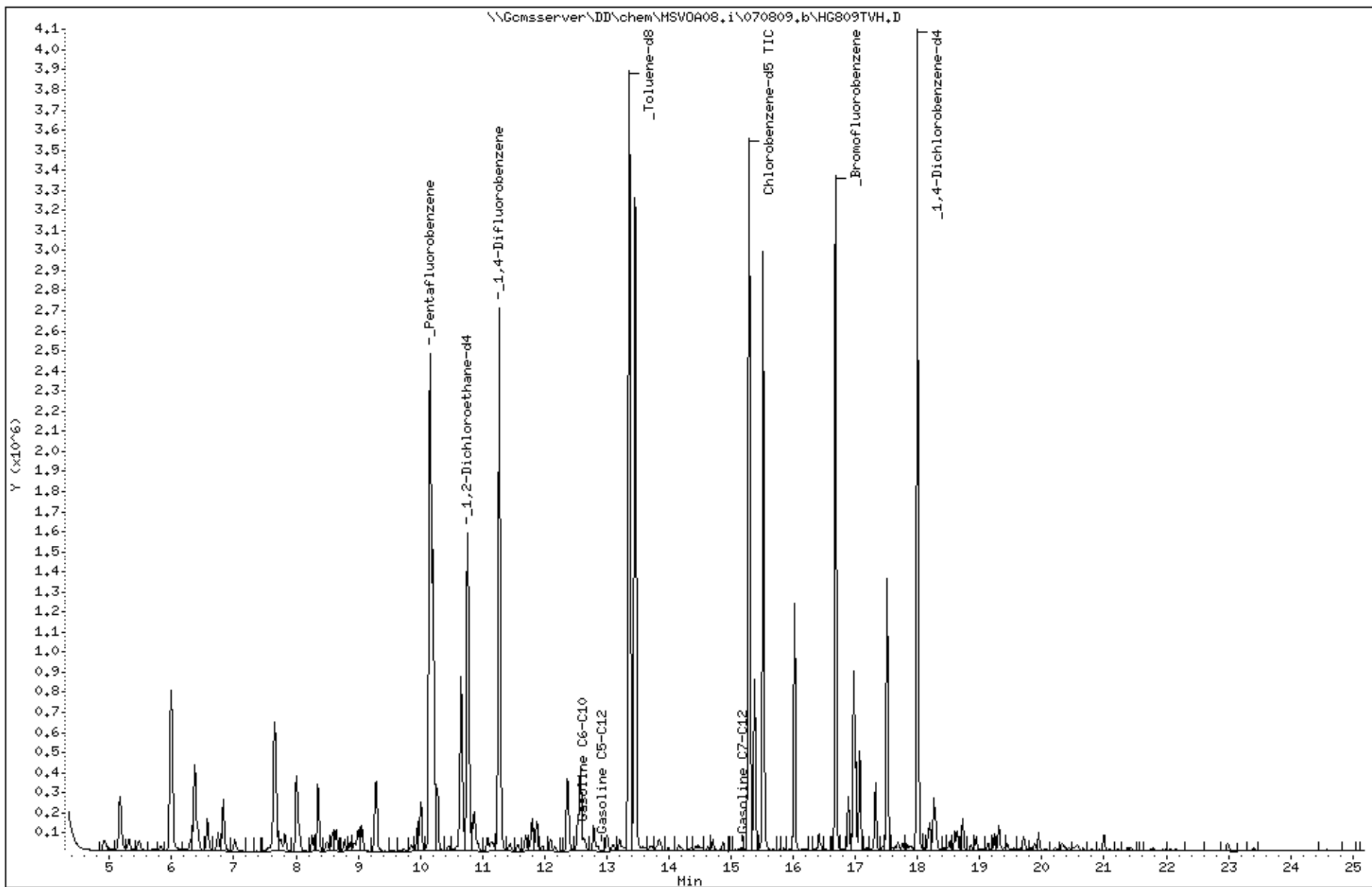
Sample Info: CCV/BS, QC502740, 152682, S12208, 0, 009/100

Instrument: MSV0A08.i

Operator: voc

Column diameter: 2.00

Column phase:



Appendix D

Email from P&D Environmental Inc.
(Consultants for Neighboring Service Station,
3495 Castro Valley Blvd.)

Ruchi Mathur

From: steven.carmack@pdenviro.com
Sent: Wednesday, September 24, 2008 11:18 AM
To: rmathur@somaenv.com
Cc: Paul King
Subject: [FWD: RO285 Xtra Oil Castro Valley Confirmation of Discontinued Use of Other Consultant Data]

Good morning Ruchi,

please see the email below from my boss to the Alameda County DEH case worker. While we still will coordinate our monitoring & sampling activities, it is no longer necessary to include each others tables in our reports, especially since they can be accessed on Geotracker or the Alameda county LOP website. If you have any problems or concerns, or we can help you in any other way give us a call.

Steve Carmack
Project Scientist
P&D Environmental, Inc.
510.658.6916
510.834.0152 (Fax)

----- Original Message -----

Subject: Fwd: RO285 Xtra Oil Castro Valley Confirmation of Discontinued Use of Other Consultant Data
From: pdking0000@aol.com
Date: Wed, September 24, 2008 10:12 am
To: steven.carmack@pdenviro.com

-----Original Message-----

From: pdking0000@aol.com
To: steven.plunkett@acgov.org
Cc: xtraoil@hotmail.com; xtraoil@sbcglobal.net
Sent: Wed, 17 Sep 2008 4:45 pm
Subject: RO285 Xtra Oil Castro Valley Confirmation of Discontinued Use of Other Consultant Data

Hi Steven,

As we have recently discussed on the telephone on 9/10/08 and 9/15/08 this e-mail confirms that P&D Environmental, Inc. (P&D) will discontinue including quarterly monitoring and sampling data generated by other consultants for nearby sites associated with coordinated sampling events. P&D will continue to coordinate sampling events with the other consultants so that monitoring data for the wells will be obtained on the same dates that monitoring data is obtained by the other consultants for the nearby sites.

Should you have any questions or need additional information, please do not hesitate to give me a call. Thank you!

Best Regards,
Paul King

P&D Environmental, Inc.
55 Santa Clara Avenue, Suite 240
Oakland, CA 94610