

**RECEIVED**

11:28 am, Aug 20, 2007

Alameda County  
Environmental Health



**ENVIRONMENTAL ENGINEERING, INC**  
6620 Owens Drive, Suite A • Pleasanton, CA 94588-3334  
TEL (925) 734-6400 • FAX (925) 734-6401

August 17, 2007

Mr. Steven Plunkett  
Alameda County Health Care Services Agency  
1131 Harbor Bay Parkway, Suite 250  
Alameda, California 94502-6577

Subject: **#RO0000346**

Site Address: 3519 Castro Valley Boulevard, Castro Valley, CA  
Castro Valley Gasoline Service Station

Dear Mr. Plunkett:

SOMA's "Third Quarter 2007 Groundwater Monitoring Report" for the subject property has been uploaded to the State's GeoTracker database and Alameda County's FTP site for your review.

Thank you for your time in reviewing our report. If you have any questions or comments, please call me at (925) 734-6400.

Sincerely,

Mansour Sepehr, Ph.D., PE  
Principal Hydrogeologist



Enclosure

cc: Mr. Mirazim Shakoori w/enclosure  
Mr. Matt Herrick – Broadbent & Associates, Inc. w/enclosure

**Third Quarter 2007  
Groundwater Monitoring Report**

**Castro Valley Gasoline Service Station  
3519 Castro Valley Boulevard  
Castro Valley, California**

**August 17, 2007**

**Project 2761**

**Prepared for  
Mr. Mirazim Shakoori  
3519 Castro Valley Boulevard  
Castro Valley, California 94546**



**ENVIRONMENTAL ENGINEERING, INC.**

6620 Owens Drive Suite A Pleasanton CA 94588 Ph: 925.734.6400 F: 925.734-6401 [www.somaenv.com](http://www.somaenv.com)

## CERTIFICATION

SOMA Environmental Engineering, Inc. has prepared this report on behalf of Mr. Mirazim Shakoori, property owner of 3519 Castro Valley Boulevard, Castro Valley, California to comply with requirements of Alameda County Health Care Services for the Third Quarter 2007 groundwater monitoring event.



Mansour Sepehr, Ph.D., P.E.  
Principal Hydrogeologist



## TABLE OF CONTENTS

CERTIFICATION .....	i
TABLE OF CONTENTS.....	ii
LIST OF TABLES.....	iii
LIST OF FIGURES .....	iii
LIST OF APPENDICES .....	iii
1.0 INTRODUCTION .....	1
1.1 Previous Activities.....	1
2. RESULTS .....	2
2.1 Field Measurements.....	2
2.2 Laboratory Analyses .....	3
3. CONCLUSIONS AND RECOMMENDATIONS.....	4

## **LIST OF TABLES**

- Table 1: Historical Groundwater Elevations and Analytical Data  
TPH-g, BTEX, and MtBE
- Table 2: Historical Groundwater Analytical Data, Gasoline Oxygenates and  
Lead Scavengers

## **LIST OF FIGURES**

- Figure 1: Site vicinity map.
- Figure 2: Site map showing locations of existing monitoring wells,  
decommissioned wells, offsite temporary well boreholes, and  
monitoring wells installed by SOMA
- Figure 3: Groundwater elevation contour map in feet. July 17, 2007
- Figure 4: Contour map of TPH-g concentrations in groundwater  
July 17, 2007
- Figure 5: Contour map of MtBE concentrations in groundwater (EPA Method  
8260B). July 17, 2007
- Figure 6: Contour map of TBA concentrations in groundwater  
July 17, 2007

## **LIST OF APPENDICES**

- Appendix A: SOMA's Groundwater Monitoring Procedures
- Appendix B: Table of elevations and coordinates on monitoring wells measured  
by Kier Wright Civil Engineers Surveyors, Inc. and field  
measurements of physical and chemical properties of the  
groundwater samples collected during Third Quarter 2007
- Appendix C: Chain of custody form and laboratory report for the Third Quarter  
2007 monitoring event

## 1.0 INTRODUCTION

SOMA Environmental Engineering, Inc. (SOMA) has prepared this report on behalf of Mr. Mirazim Shakoori, property owner of the former BP gasoline station located at 3519 Castro Valley Boulevard, Castro Valley, California (the Site, Figure 1). The Site is located in an area of primarily residential and commercial properties.

This report summarizes results of the Third Quarter 2007 groundwater monitoring event conducted at the Site on July 17, 2007. Included are the physical and chemical properties measured in the field for each groundwater sample, including pH, temperature, and electrical conductivity (EC). Laboratory analytical results for the groundwater samples are also included.

Activities were performed in accordance with general guidelines of the California Regional Water Quality Control Board (CRWQCB) and Alameda County Health Care Services (ACHCS). Appendix A details procedures used by SOMA during this monitoring event.

### 1.1 Previous Activities

1984: Three single-walled fiberglass underground storage tanks (USTs) with capacities of 6,000 gallons, 8,000 gallons, and 10,000 gallons, were installed in the southeastern portion of the Site. A former dispenser island reportedly existed on the west side of the Site; however, there was no available information about the dispenser removal date.

1988: A 1,000-gallon, double-walled, fiberglass waste oil tank (WOT) was installed to replace the previous 380-gallon WOT. In September, Kaprealian Engineering, Inc. removed the original 380-gallon WOT and observed holes in this UST. As a result, confirmation soil samples were collected from the bottom of the excavation. The following analytical soil results were observed: benzene and toluene were detected at 6.8 µg/kg and 9.5 µg/kg, respectively; total petroleum hydrocarbons (TPH) and total oil and grease (TOG) constituents were not detected.

September and October 1992: Environmental Science & Engineering, Inc. (ESE) drilled five soil boreholes and converted them into monitoring wells (ESE-1 through ESE-5). Soil and groundwater samples were collected during well installation. In the soil samples, the maximum level of soil contamination was detected in monitoring well borehole ESE-5 at 220,000 µg/kg TPH as gasoline (TPH-g); 1,400 µg/kg benzene; 8,200 µg/kg toluene; 3,300 µg/kg ethylbenzene; and 18,000 µg/kg xylenes. In the groundwater samples collected from ESE-1, maximum concentrations were TPH-g at 2,300 µg/L; benzene at 370 µg/L; toluene at 160 µg/L; ethylbenzene at 17 µg/L; and xylenes at 110 µg/L. Figure 2 shows well locations.

July 1995: Three additional monitoring wells were installed: two on-site wells, MW-6 and MW-8, and one off-site well, MW-7 (Figure 2).

April 1996: Well MW-8, located on the western margin of the Site, was decommissioned to accommodate the road-widening project along Redwood Boulevard (Figure 2).

August 20, 2003: Prior to UST removal, SOMA oversaw drilling of two boreholes by Vironex. The boreholes were drilled in order to characterize the soil for landfill acceptance criteria. Borehole locations are shown in Figure 2.

September 2003: Three single-walled, fiberglass USTs, with capacities of 6,000 gallons, 8,000 gallons, and 10,000 gallons, were removed and replaced with two new double-walled, fiberglass USTs with capacities of 12,000 gallons and 20,000 gallons. In addition, the dispensers, product lines, and vent lines were removed and replaced.

Third Quarter 2003: Two monitoring wells, ESE-3 and ESE-4, were decommissioned due to construction activities.

Fourth Quarter 2003: In December, SOMA oversaw drilling of off-site temporary well boreholes TWB-1 through TWB-5 to determine the horizontal extent of off-site petroleum hydrocarbon contamination. Locations of the temporary boreholes are displayed in Figure 2.

June 2004: On June 10, SOMA installed on- and off-site monitoring wells at the Site: SOMA-1 in the southeastern section of the Site, and SOMA-2 to SOMA-4 south and southeast of the Site. Figure 2 shows locations of these monitoring wells. Kier and Wright Engineers Surveyors, of Pleasanton, California, surveyed all site wells on June 21. Appendix B shows elevations and coordinates of surveyed wells.

## **2. RESULTS**

Following are results of field measurements and laboratory analyses for the July 17, 2007 groundwater monitoring event.

### **2.1 Field Measurements**

Table 1 presents calculated groundwater elevation and depth to groundwater in each monitoring well. Depths to groundwater ranged from 7.47 feet in well ESE-5 to 10.84 feet in SOMA-2. Groundwater elevations ranged from 166.75 feet in SOMA-3 to 172.04 feet in MW-6. Table 1 also presents historical groundwater elevations in the monitoring wells.

The groundwater elevation contour map is displayed in Figure 3. Groundwater flow direction is south to southeasterly across the Site. The groundwater gradient is approximately 0.015 feet/feet.

Since the previous monitoring event (Second Quarter 2007), the groundwater flow direction has remained southeasterly, and the groundwater gradient has remained consistent. Refer to Table 1 for detailed historical groundwater elevation trends.

## 2.2 Laboratory Analyses

Table 1 presents laboratory analytical results of groundwater samples for the following: TPH-g; benzene, toluene, ethylbenzene, total xylenes (BTEX); and methyl tertiary-butyl ether (MtBE). Table 2 presents laboratory analytical results of groundwater samples for gasoline oxygenates and lead scavengers.

TPH-g was below the laboratory-reporting limit in the groundwater samples collected throughout the Site except at wells ESE-1 and ESE-5. TPH-g was detected in ESE-1 and ESE-5 at 755 µg/L and 836 µg/L, respectively. Figure 4 displays the contour map of TPH-g concentrations in the groundwater. As illustrated, TPH-g has only minimally impacted the groundwater throughout the site.

The following BTEX analytes were observed during this monitoring event.

- In wells MW-7 and ESE-2, toluene, ethylbenzene, and total xylenes were below the laboratory-reporting limit, and benzene was at a low level.
- In ESE-5 and SOMA-1, toluene was below the laboratory-reporting limit.
- In MW-6 and off-site wells SOMA-2 and SOMA-3, all BTEX analytes were below the laboratory-reporting limit.
- In SOMA-4, benzene, toluene, and total xylenes were below the laboratory-reporting limit; ethylbenzene was detected at 4.47 µg/L.
- The highest BTEX concentrations were detected in ESE-1 at 271 µg/L, 8.60 µg/L, 17.8 µg/L, and 22.06 µg/L, respectively.

Due to low or non-detectable levels of benzene throughout the site, no iso-concentration benzene figure was drawn.

MtBE was below the laboratory-reporting limit in wells MW-6 and SOMA-2. Detectable MtBE concentrations ranged from 13.3 µg/L in Site well SOMA-4 to 105 µg/L in Site well ESE-2. Figure 5 displays the contour map of MtBE



concentrations in the groundwater. The MtBE plume has migrated off-site; however, only trace concentrations were detected in the off-site wells.

The following gasoline oxygenate and lead scavenger analytes were observed during this monitoring event.

- All isopropyl ether (DIPE), ethyl tertiary-butyl ether (ETBE), ethanol, 1,2-dichloroethane (1,2-DCA), and 1,2-dibromoethane (EDB) constituents were below the laboratory-reporting limit in all groundwater samples collected during this monitoring event.
- Tertiary-amyl methyl ether (TAME) was detected at 2.95 µg/L in ESE-2; and below the laboratory-reporting limit in the remaining groundwater samples.
- Tertiary-butyl alcohol (TBA) was the most dominant gasoline oxygenate analyte detected during this monitoring event. TBA was below the laboratory-reporting limit in well MW-6. Detectable TBA concentrations ranged from 2.58 µg/L in SOMA-2 to 555 µg/L in SOMA-1.

Figure 6 displays the contour map of TBA concentrations in the groundwater. As illustrated, TBA has only minimally impacted the groundwater throughout the site.

Refer to Tables 1 and 2 for detailed historical concentration trends. Appendix C includes the laboratory report and chain of custody form for the Third Quarter 2007 monitoring event at the Site.

### **3. CONCLUSIONS AND RECOMMENDATIONS**

Findings of the Third Quarter 2007 groundwater monitoring event are summarized as follows:

- The groundwater flow direction at the Site has remained south to southeasterly across the Site.
- TBA is formed in the environment through oxidation of MtBE in the atmosphere followed by hydrolysis or through microbial oxidation of MtBE in impacted aquifer materials. In general, both the MtBE and TBA plumes appear to be centrally located in the southeastern section of the Site. This can be attributed to the south to southeasterly groundwater flow direction across the Site from the former UST cavity.
- Due to its high mobility, MtBE has migrated off-site. However, in the northern section of the Site, at well MW-6, all tested constituents were at non-detectable levels.
- TPH-g has remained at a low level in the western section of the Site, in well ESE-5 where there was once a source area; the other tested

constituents—BTEX, MtBE, and gasoline oxygenates—were at low or non-detectable levels.

SOMA recommends the following action item:

- Adoption of *no further action* (NFA) status for the Site by the ACHCS, based on continued low to non-detectable concentration levels of contaminants.

# Tables

**Table 1**  
**Historical Groundwater Elevations & Analytical Data**  
**TPH-g, BTEX, MtBE**  
**3519 Castro Valley Blvd, Castro Valley, CA**

Monitoring Well	Date	Top of casing elevation <sup>1</sup> (feet)	Depth to Groundwater (feet)	Groundwater Elevation (feet)	TPH-g (µg/L)	Benzene (µg/L)	Toluene (µg/L)	Ethyl benzene (µg/L)	Total Xylenes (µg/L)	MtBE (µg/L) 8260B
ESE-1	10/5/1992	177.69	11.22	166.47	2100	370	150	17	110	NA
	10/5/1992	177.69	NM	NM	2300	370	160	16	110	NA
	4/1/1993	177.69	8.79	168.90	5900	1500	410	110	390	NA
	6/29/1993	177.69	10.34	167.35	7600	2900	390	130	460	NA
	9/23/1993	177.69	10.91	166.78	2000	490	40	20	56	600
	9/23/1993	177.69	NM	NM	1500	420	39	19	56	550
	12/10/1993	177.69	9.93	167.76	1800	480	42	19	66	921
	12/10/1993	177.69	NM	NM	1500	380	38	17	55	770
	2/17/1994	177.69	9.64	168.05	1900	380	48	24	80	585
	2/17/1994	177.69	NM	NM	2200	430	42	19	65	491
	8/8/1994	177.69	11.72	165.97	2100	450	46	16	50	760
	10/12/1994	177.69	10.48	167.21	760	240	16	51	39	230
	1/19/1995	177.69	7.77	169.92	840	600	120	22	58	NA
	5/2/1995	177.69	8.69	169.00	2000	640	67	24	98	NA
	7/28/1995	177.69	10.12	167.57	190	<0.50	<0.50	<0.50	<1.0	NA
	11/17/1995	177.69	10.57	167.12	200	3.4	<1.0	1	<2.0	600
	2/7/1996	177.69	7.41	170.28	750	370	23	21	64	680
	4/23/1996	177.69	9.12	168.57	310	100	<1.0	<1.0	<1.0	1500
	7/9/1996	177.69	10.12	167.57	730	230	74	13	63	750
	10/10/1996	177.69	10.80	166.89	420	26	1.6	7.3	12	430

**Table 1**  
**Historical Groundwater Elevations & Analytical Data**  
**TPH-g, BTEX, MtBE**  
**3519 Castro Valley Blvd, Castro Valley, CA**

Monitoring Well	Date	Top of casing elevation <sup>1</sup> (feet)	Depth to Groundwater (feet)	Groundwater Elevation (feet)	TPH-g (µg/L)	Benzene (µg/L)	Toluene (µg/L)	Ethyl benzene (µg/L)	Total Xylenes (µg/L)	MtBE (µg/L) 8260B
ESE-1 cont.	1/20/1997	177.69	10.52	167.17	660	290	4.2	13	36	450
	4/25/1997	177.69	9.77	167.92	410	<0.5	<1.0	<1.0	<1.0	580
	7/18/1997	177.69	10.55	167.14	420	<0.5	<1.0	<1.0	<1.0	370
	10/27/1997	177.69	10.36	167.33	300	56	<1.0	6.5	<1.0	220
	1/22/1998	177.69	7.52	170.17	4200	440	9	15	17.7	1300
	4/23/1998	177.69	8.80	168.89	15000	3400	190	910	900	4900
	4/23/1998	177.69	NM	NM	15000	2800	140	730	730	4400
	7/29/1998	177.69	9.73	167.96	NA	NA	NA	NA	NA	NA
	7/30/1998	177.69	NM	NM	15000	<2.5	<5.0	<5.0	<5.0	15000
	12/17/1998	177.69	9.51	168.18	2400	73	1	2.8	4.6	2000
	3/19/1999	177.69	8.65	169.04	4700	58	<1.0	<1.0	<1.0	4700
	6/23/1999	177.69	10.51	167.18	600	170	<1.0	7.2	5	3900
	9/27/1999	177.69	10.32	167.37	920	200	<25	<25	<25	4900
	12/9/1999	177.69	10.24	167.45	460	130	1.2	5.2	1.5	5100
	3/9/2000	177.69	7.72	169.97	3000	1300	120	80	140	7300
	6/8/2000	177.69	9.40	168.29	2900	540	9.7	20	17	5200
	9/18/2000	177.69	10.05	167.64	890	3.4	<0.5	1.4	<0.5	2800
	12/14/2000	177.69	8.20	169.49	1600	11.1	<0.5	<0.5	<0.5	2730
	3/21/2001	177.69	9.75	167.94	5700	2.28	<0.5	0.51	<1.5	6810
	6/18/2001	177.69	10.21	167.48	2000	152	0.669	3.62	2.34	1980
	9/18/2001	177.69	10.30	167.39	2500	57.1	<5.0	6.25	<15	2090
	12/13/2001	177.69	9.82	167.87	2800	208	6.05	8.54	9.66	2030
	3/14/2002	177.69	9.10	168.59	1800	140	6.31	4.5	9.41	1970
	6/19/2002	177.69	9.92	167.77	1100	220	2.02	4.23	3.8	1280
9/10/2002	177.69	10.21	167.48	490	39	2.9	<2.0	4.9	670	
12/16/2002	177.69	8.56	169.13	730	140	6	3.2	9.1	670	

**Table 1**  
**Historical Groundwater Elevations & Analytical Data**  
**TPH-g, BTEX, MtBE**  
**3519 Castro Valley Blvd, Castro Valley, CA**

Monitoring Well	Date	Top of casing elevation <sup>1</sup> (feet)	Depth to Groundwater (feet)	Groundwater Elevation (feet)	TPH-g (µg/L)	Benzene (µg/L)	Toluene (µg/L)	Ethyl benzene (µg/L)	Total Xylenes (µg/L)	MtBE (µg/L) 8260B
ESE-1 cont.	3/11/2003	177.69	9.40	168.29	1700	490	21	22	41	530
	6/17/2003	177.69	9.86	167.83	1300	140	<10	<10	<10	480
	12/9/2003	177.69	9.32	168.37	1400	390	12	14	26.1	260
	2/26/2004	177.69	7.71	169.98	3200	880	50	44	89	200
	5/21/2004	177.69	10.19	167.50	1500	370	10	14	25.2	140
	8/10/2004	180.24	10.41	169.83	460	390	7	8.1	15.4	110
	10/19/2004	180.24	10.40	169.84	1600	490	13	12	25.3	110
	1/14/2005	180.24	8.26	171.98	790 Z	420	26	19	52	91
	4/14/2005	180.24	8.77	171.47	3020	766	25.6	21.3	25.26	88.2
	7/7/2005	180.24	9.94	170.30	1940	440	15.5	15.7	21	80.6
	11/15/2005	180.24	10.21	170.03	1260	259	6.2	8.2	10.81	45.8
	2/8/2006	180.24	9.01	171.23	1430	332	13.6	18.1	25.03	43
	4/27/2006	180.24	9.14	171.10	1,600	519	23.2	32.4	40.20	63.4
	8/1/2006	180.24	9.92	170.32	1,530	395	11.8	25.4	28.01	40
	10/19/2006	180.24	10.34	169.90	1,230	327	10.2	21.6	21.19	29.6
	1/12/2007	180.24	9.84	170.40	561	153	7.18	14.4	14.95	30.9
4/17/2007	180.24	9.78	170.46	467	192	7.59	13.8	16.42	30.4	
	<b>7/17/2007</b>	<b>180.24</b>	<b>9.82</b>	<b>170.42</b>	<b>755</b>	<b>271</b>	<b>8.6</b>	<b>17.8</b>	<b>22.06</b>	<b>26.7</b>
ESE-2	10/5/1992	178.23	11.68	166.55	300	5.4	16	3.9	45	NA
	4/1/1993	178.23	9.17	169.06	240	27	<0.5	17	2.6	123
	6/29/1993	178.23	10.88	167.35	1700	260	24	110	23	NA
	6/29/1993	178.23	NM	NM	1300	240	17	110	25	NA
	9/23/1993	178.23	11.56	166.67	240	3.1	0.5	0.6	2.5	643
	12/10/1993	178.23	10.48	167.75	250	2.4	2.4	1.5	11	940

**Table 1**  
**Historical Groundwater Elevations & Analytical Data**  
**TPH-g, BTEX, MtBE**  
**3519 Castro Valley Blvd, Castro Valley, CA**

<b>Monitoring Well</b>	<b>Date</b>	<b>Top of casing elevation <sup>1</sup> (feet)</b>	<b>Depth to Groundwater (feet)</b>	<b>Groundwater Elevation (feet)</b>	<b>TPH-g (µg/L)</b>	<b>Benzene (µg/L)</b>	<b>Toluene (µg/L)</b>	<b>Ethyl benzene (µg/L)</b>	<b>Total Xylenes (µg/L)</b>	<b>MtBE (µg/L) 8260B</b>
ESE-2 cont	2/17/1994	178.23	10.06	168.17	900	<0.5	<0.5	<0.5	<0.5	930
	8/8/1994	178.23	11.11	167.12	750	<0.5	<0.5	<0.5	<0.5	1400
	10/12/1994	178.23	11.31	166.92	1700	<0.5	<0.5	<0.5	<0.5	3000
	1/19/1995	178.23	8.25	169.98	300	2	0.9	0.7	1	NA
	5/2/1995	178.23	9.21	169.02	1200	4	<2.5	<2.5	<5	NA
	7/28/1995	178.23	10.64	167.59	2000	<2.5	<2.5	<2.5	<5	NA
	11/17/1995	178.23	11.13	167.10	3600	<25	<25	<25	<50	12000
	11/17/1995	178.23	NM	NM	3400	<25	<25	<25	<50	12000
	2/7/1996	178.23	7.94	170.29	450	<0.5	<1	<1	<1	2300
	4/23/1996	178.23	9.73	168.50	260	0.9	<1	<1	<1	8600
	7/9/1996	178.23	10.70	167.53	780	<2.5	<5	<5	<5	13393
	10/10/1996	178.23	11.39	166.84	2900	<0.5	<1	<1	<1	12000
	1/20/1997	178.23	9.04	169.19	<250	<2.5	<5	<5	<5	13000
	4/25/1997	178.23	10.31	167.92	2700	<0.5	<1	<1	<1	15000
	7/18/1997	178.23	11.02	167.21	11000	<5	<10	<10	<10	11000
	10/27/1997	178.23	10.93	167.30	6100	<2.5	<5.0	<5.0	<5.0	7100
	10/27/1997	178.23	NM	NM	6600	<2.5	<5.0	<5.0	<5.0	7400
	1/22/1998	178.23	7.93	170.30	13000	<0.5	<1	<1	<1	10000
	1/22/1998	178.23	NM	NM	13000	<0.5	<1	<1	<1	10000
	4/23/1998	178.23	9.34	168.89	19000	<5	<10	<10	<10	36000
	7/29/1998	178.23	10.29	167.94	NA	NA	NA	NA	NA	NA
	7/30/1998	178.23	NM	NM	19000	<5	<10	<10	<10	36000
	12/17/1998	178.23	10.20	168.03	12000	<5	<5	<5	<5	13000
3/19/1999	178.23	9.02	169.21	18000	160	<1	<1	<1	18000	
6/23/1999	178.23	9.99	168.24	280	<1	<1	<1	<1	16000	
9/27/1999	178.23	10.69	167.54	<500	<25	<25	<25	<25	12000	
12/9/1999	178.23	11.26	166.97	<50	<0.3	<0.3	<0.3	<0.6	12000	

**Table 1**  
**Historical Groundwater Elevations & Analytical Data**  
**TPH-g, BTEX, MtBE**  
**3519 Castro Valley Blvd, Castro Valley, CA**

Monitoring Well	Date	Top of casing elevation <sup>1</sup> (feet)	Depth to Groundwater (feet)	Groundwater Elevation (feet)	TPH-g (µg/L)	Benzene (µg/L)	Toluene (µg/L)	Ethyl benzene (µg/L)	Total Xylenes (µg/L)	MtBE (µg/L) 8260B
ESE-2 cont	3/9/2000	178.23	7.95	170.28	<50	1.6	<0.5	<0.5	<0.5	7900
	6/8/2000	178.23	9.66	168.57	1600	<0.5	0.73	<0.5	2.2	9400
	12/14/2000	178.23	11.15	167.08	6000	0.75	<0.5	<0.5	<0.5	11200
	3/21/2001	178.23	10.35	167.88	6900	786	45.7	37.7	71.5	3790
	6/18/2001	178.23	11.24	166.99	6400	<2.5	<2.5	<2.5	<7.5	9320
	9/18/2001	178.23	11.35	166.88	4800	<12.5	<12.5	<12.5	<37.5	6960
	12/13/2001	178.23	10.97	167.26	59000	0.592	<0.5	<0.5	<1	5940
	3/14/2002	178.23	10.13	168.10	4500	76	<0.5	<0.5	<1	6660
	6/19/2002	178.23	10.91	167.32	250	<12.5	<12.5	<12.5	<25	4900
	9/10/2002	178.23	10.82	167.41	1500	<5	<5	<5	6.3	3100
	12/16/2002	178.23	7.87	170.36	1400	<5	<5	<5	<5	2400
	3/11/2003	178.23	10.24	167.99	2800	<10	<10	<10	<10	4800
	6/17/2003	178.23	10.19	168.04	10000	<100	<100	<100	<100	4400
	12/9/2003	178.23	9.97	168.26	<50	<0.5	<0.5	<0.5	<0.5	3400
	2/26/2004	178.23	7.89	170.34	<50	<0.5	<0.5	<0.5	<0.5	3000
	5/21/2004	178.23	10.70	167.53	<50	<0.5	<0.5	<0.5	<0.5	1100
	8/10/2004	180.79	10.99	169.80	<50	<0.5	<0.5	<0.5	<0.5	550
	10/19/2004	180.79	10.46	170.33	<50	<0.5	<0.5	<0.5	<0.5	410
	1/14/2005	180.79	8.66	172.13	<50	<8.3	<8.3	<8.3	<8.3	1200
	4/14/2005	180.79	9.38	171.41	<860	<2.15	<2.15	<2.15	<4.30	1020
7/7/2005	180.79	10.46	170.33	<860	<2.15	<8.60	<2.15	<4.30	378	
11/15/2005	180.79	10.55	170.24	<50	<0.5	<2.0	<0.5	<1.0	210	
2/8/2006	180.79	9.46	171.33	<215	<2.15	<8.6	<2.15	<4.3	419	
4/27/2006	180.79	10.67	170.12	<100	1.71	<4.0	<1.0	<2.0	432	
8/1/2006	180.79	10.29	170.50	<100	2.83	<4.0	<1.0	<2.0	222	
10/19/2006	180.79	10.65	170.14	<50	0.8	<2.0	<0.5	<1.0	221	



**Table 1**  
**Historical Groundwater Elevations & Analytical Data**  
**TPH-g, BTEX, MtBE**  
**3519 Castro Valley Blvd, Castro Valley, CA**

Monitoring Well	Date	Top of casing elevation <sup>1</sup> (feet)	Depth to Groundwater (feet)	Groundwater Elevation (feet)	TPH-g (µg/L)	Benzene (µg/L)	Toluene (µg/L)	Ethyl benzene (µg/L)	Total Xylenes (µg/L)	MtBE (µg/L) 8260B
ESE-2 cont	1/12/2007	180.79	NM	NM	NA	NA	NA	NA	NA	NA
	4/17/2007	180.79	10.20	170.59	<50	3.17	<2.0	4.49	<2.0	158
	<b>7/17/2007</b>	<b>180.79</b>	<b>10.31</b>	<b>170.48</b>	<b>&lt;50</b>	<b>1.65</b>	<b>&lt;2.0</b>	<b>&lt;0.5</b>	<b>&lt;2.0</b>	<b>105</b>
ESE-3	10/5/1992	178.20	10.58	167.62	430	57	31	3.6	34	NA
	4/1/1993	178.20	8.14	170.06	2400	460	220	74	210	NA
	6/29/1993	178.20	9.72	168.48	280	56	14	15	13	NA
	9/23/1993	178.20	10.46	167.74	72	13	3.5	1.7	4.1	NA
	12/10/1993	178.20	9.30	168.90	270	71	32	6.1	33	NA
	2/17/1994	178.20	8.97	169.23	520	140	10	20	33	5.74
	8/8/1994	178.20	10.02	168.18	<50	8.8	1.6	1.6	2.3	<5.0
	10/12/1994	178.20	10.32	167.88	470	190	6.4	15	18	<5.0
	1/19/1995	178.20	7.40	170.80	330	260	27	21	20	NA
	5/2/1995	178.20	8.26	169.94	530	180	30	23	44	NA
	7/28/1995	178.20	9.54	168.66	<50	<0.50	<0.50	<0.50	<1	NA
	11/17/1995	178.20	10.04	168.16	<50	1.7	<0.50	<0.50	<1	<5.0
	2/7/1996	178.20	7.08	171.12	<50	8.6	<1	<1	<1	<10
	4/1/2396	178.20	8.79	169.41	<50	7.6	<1	<1	<1	65
	7/9/1996	178.20	10.09	168.11	<50	12	2.6	2	3.9	26
	10/10/1996	178.20	10.48	167.72	NA	NA	NA	NA	NA	NA
	10/11/1996	178.20	NM	NM	260	140	<1	<1	2.6	<10
1/20/1997	178.20	8.65	169.55	<50	1.5	1.7	<1	<1	14	
4/25/1997	178.20	10.02	168.18	<50	<0.5	<1	<1	<1	14	
7/18/1997	178.20	10.66	167.54	10000	1400	1400	300	1280	<250	
10/27/1997	178.20	9.83	168.37	<250	<2.5	<5.0	<5.0	36	<50	

**Table 1**  
**Historical Groundwater Elevations & Analytical Data**  
**TPH-g, BTEX, MtBE**  
**3519 Castro Valley Blvd, Castro Valley, CA**

Monitoring Well	Date	Top of casing elevation <sup>1</sup> (feet)	Depth to Groundwater (feet)	Groundwater Elevation (feet)	TPH-g (µg/L)	Benzene (µg/L)	Toluene (µg/L)	Ethyl benzene (µg/L)	Total Xylenes (µg/L)	MtBE (µg/L) 8260B
ESE-3 cont.	1/22/1998	178.20	7.06	171.14	130	<0.5	<1.0	<1.0	<1.0	120
	4/23/1998	178.20	8.44	169.76	4800	560	<10	15	<10	4000
	7/29/1998	178.20	9.27	168.93	NA	NA	NA	NA	NA	NA
	7/30/1998	178.20	NM	NM	1800	6.2	<5.0	<5.0	<5.0	1700
	12/17/1998	178.20	9.15	169.05	600	54	<1.0	2.1	4.9	340/480
	3/19/1999	178.20	8.14	170.06	2000	260	4.4	13	28	870
	6/23/1999	178.20	9.44	168.76	290	91	<1.0	8.3	16	240
	9/27/1999	178.20	9.69	168.51	130	35	<1.0	2.7	3.8	100
	12/9/1999	178.20	10.99	167.21	380	84	1.7	8.7	6.3	160
	3/9/2000	178.20	7.12	171.08	950	190	4.6	39	62	350
	6/8/2000	178.20	10.92	167.28	300	37	<0.5	2.3	1.3	400
	9/18/2000	178.20	11.12	167.08	920	140	1.3	15	4.8	170
	12/14/2000	178.20	9.70	168.50	320	64	<0.5	6.24	1.76	201
	3/21/2001	178.20	10.07	168.13	680	80.5	0.546	21.1	18.2	398
	6/18/2001	178.20	11.42	166.78	380	47	<0.5	3.11	<1.5	242
	9/18/2001	178.20	11.55	166.65	340	54.8	<0.5	4.36	<1.5	79.7
	12/13/2001	178.20	10.12	168.08	270	31.4	<0.5	1.31	2.24	129
	3/14/2002	178.20	9.84	168.36	670	89.8	0.769	23.4	30.4	413
	6/19/2002	178.20	10.57	167.63	130	18.6	<0.5	<0.5	<1	166
	9/10/2002	178.20	9.90	168.30	88	12	<0.5	<0.5	<0.5	93
12/16/2002	178.20	9.23	168.97	290	55	17	3.7	14	78	
3/11/2003	178.20	9.05	169.15	100	3.4	<0.5	0.54	<0.50	140	
6/17/2003	178.20	9.30	168.90	520	17	<5	5.3	<5	130	

**Table 1**  
**Historical Groundwater Elevations & Analytical Data**  
**TPH-g, BTEX, MtBE**  
**3519 Castro Valley Blvd, Castro Valley, CA**

Monitoring Well	Date	Top of casing elevation <sup>1</sup> (feet)	Depth to Groundwater (feet)	Groundwater Elevation (feet)	TPH-g (µg/L)	Benzene (µg/L)	Toluene (µg/L)	Ethyl benzene (µg/L)	Total Xylenes (µg/L)	MtBE (µg/L) 8260B
ESE-4	10/5/1992	177.73	10.33	167.40	98	7.2	1.3	1.1	6.1	NA
	4/1/1993	177.73	7.88	169.85	550	93	20	23	33	NA
	6/29/1993	177.66	8.33	169.33	150	23	0.6	5.4	0.5	54
	9/23/1993	177.66	10.05	167.61	110	14	1.7	3.2	4.6	NA
	12/10/1993	177.66	8.95	168.71	110	21	7.2	4.2	10	28.75
	2/17/1994	177.66	8.65	169.01	210	26	1.2	4.7	11	113
	8/8/1994	177.66	9.76	167.90	76	9.6	<0.5	2	<0.5	62
	10/12/1994	177.66	9.62	168.04	<50	<0.5	<0.5	<0.5	<0.5	44
	1/19/1995	177.66	6.97	170.69	140	56	14	24	23	NA
	5/2/1995	177.66	7.85	169.81	130	21	2.8	8.6	8.2	NA
	7/28/1995	177.66	9.20	168.46	<50	<0.5	<0.5	<0.5	<1	NA
	11/17/1995	177.66	9.68	167.98	<50	<0.5	0.6	<0.5	<1	18
	2/7/1996	177.66	6.59	171.07	100	2.6	<1	1.6	4.1	42
	4/23/1996	177.66	8.30	169.36	160	37	15	16	31	43
	7/9/1996	177.66	9.21	168.45	60	17	1.5	6.8	11.6	27
	10/10/1996	177.66	9.97	167.69	NA	NA	NA	NA	NA	NA
	10/11/1996	177.66	NM	NM	<50	<0.5	<1.0	<1.0	<1.0	18
	1/20/1997	177.66	7.68	169.98	<50	<0.5	<1.0	<1.0	<1.0	130
	4/25/1997	177.66	9.15	168.51	<250	<2.5	<5.0	<5.0	<5.0	<50
	7/18/1997	177.66	9.71	167.95	<50	15	<10	<10	<10	<100
10/27/1997	177.66	9.38	168.28	<250	<2.5	<5.0	<5.0	<5.0	<50	
1/22/1998	177.66	6.59	171.07	<50	<0.5	<1.0	<1.0	<1.0	<10	
4/23/1998	177.66	7.90	169.76	<250	<2.5	<5.0	<5.0	<5.0	<50	
7/29/1998	177.66	8.96	168.70	NA	NA	NA	NA	NA	NA	
7/30/1998	177.66	NM	NM	<50	<0.5	<1.0	<1.0	<1.0	<10	
12/17/1998	177.66	8.32	169.34	NA	NA	NA	NA	NA	NA	

**Table 1**  
**Historical Groundwater Elevations & Analytical Data**  
**TPH-g, BTEX, MtBE**  
**3519 Castro Valley Blvd, Castro Valley, CA**

Monitoring Well	Date	Top of casing elevation <sup>1</sup> (feet)	Depth to Groundwater (feet)	Groundwater Elevation (feet)	TPH-g (µg/L)	Benzene (µg/L)	Toluene (µg/L)	Ethyl benzene (µg/L)	Total Xylenes (µg/L)	MtBE (µg/L) 8260B
ESE-4 cont.	3/19/1999	177.66	7.71	169.95	NA	NA	NA	NA	NA	NA
	6/23/1999	177.66	8.78	168.88	NA	NA	NA	NA	NA	NA
	9/27/1999	177.66	9.27	168.39	NA	NA	NA	NA	NA	NA
	12/9/1999	177.66	9.21	168.45	NA	NA	NA	NA	NA	NA
	3/9/2000	177.66	6.82	170.84	NA	NA	NA	NA	NA	NA
	6/8/2000	177.66	8.72	168.94	NA	NA	NA	NA	NA	NA
	9/18/2000	177.66	8.72	168.94	NA	NA	NA	NA	NA	NA
	12/14/2000	177.66	8.61	169.05	NA	NA	NA	NA	NA	NA
	3/21/2001	177.66	8.61	169.05	NA	NA	NA	NA	NA	NA
	6/18/2001	177.66	9.24	168.42	NA	NA	NA	NA	NA	NA
	9/18/2001	177.66	9.35	168.31	NA	NA	NA	NA	NA	NA
	12/13/2001	177.66	8.53	169.13	NA	NA	NA	NA	NA	NA
	3/14/2002	177.66	8.44	169.22	NA	NA	NA	NA	NA	NA
	6/19/2002	177.66	10.97	166.69	NA	NA	NA	NA	NA	NA
	9/10/2002	177.66	9.27	168.39	NA	NA	NA	NA	NA	NA
	12/16/2002	177.66	6.90	170.76	NA	NA	NA	NA	NA	NA
3/11/2003	177.66	8.83	168.83	NA	NA	NA	NA	NA	NA	
6/17/2003	177.66	8.84	168.82	NA	NA	NA	NA	NA	NA	
ESE-5	10/5/1992	176.08	9.22	166.86	1300	200	3.8	1.2	18	NA
	4/1/1993	176.08	7.02	169.06	13000	2200	26	730	1000	NA
	4/1/1993	176.08	NM	NM	13000	2500	25	740	1100	NA
	6/29/1993	176.08	10.21	165.87	7600	1500	9.3	170	100	NA
	9/23/1993	176.08	10.64	165.44	560	19	1.2	0.9	1.8	NA
	12/10/1993	176.08	9.42	166.66	1700	300	3	76	110	14.07

**Table 1**  
**Historical Groundwater Elevations & Analytical Data**  
**TPH-g, BTEX, MtBE**  
**3519 Castro Valley Blvd, Castro Valley, CA**

Monitoring Well	Date	Top of casing elevation <sup>1</sup> (feet)	Depth to Groundwater (feet)	Groundwater Elevation (feet)	TPH-g (µg/L)	Benzene (µg/L)	Toluene (µg/L)	Ethyl benzene (µg/L)	Total Xylenes (µg/L)	MtBE (µg/L) 8260B
ESE-5 cont	2/7/1994	176.08	9.35	166.73	3500	640	7.8	90	130	45.13
	8/8/1994	176.08	8.76	167.32	2600	210	4.6	9.4	4.4	33
	8/8/1994	176.08	NM	NM	2500	230	4.6	13	4.8	32
	10/12/1994	176.08	8.95	167.13	5600	560	9.5	75	21	79.2
	10/12/1994	176.08	NM	NM	6000	550	10	78	22	77
	1/19/1995	176.08	5.40	170.68	1900	620	<5	95	15	NA
	1/19/1995	176.08	NM	NM	1600	620	<5	93	17	NA
	5/2/1995	176.08	6.48	169.60	5700	1100	<10	180	58	NA
	5/2/1995	176.08	NM	NM	5300	1100	<10	180	58	NA
	7/28/1995	176.08	7.97	168.11	520	15	<0.50	1.7	1.3	NA
	7/28/1995	176.08	NM	NM	460	7.2	<0.50	1.9	1.5	NA
	11/17/1995	176.08	8.39	167.69	850	39	1.8	7.6	2.7	24
	2/7/1996	176.08	4.71	171.37	4100	670	6	190	140	<50
	4/23/1996	176.08	7.35	168.73	3000	570	<5	79	100	84
	7/9/1996	176.08	9.40	166.68	620	150	1.7	9.3	6.4	25
	10/10/1996	176.08	9.04	167.04	1100	29	<5	<5	<5	<50
	10/10/1996	176.08	NM	NM	1100	31	<5	<5	<5	<50
	1/20/1997	176.08	5.82	170.26	2100	980	<25	280	80	<250
	1/20/1997	176.08	NM	NM	2700	910	8.8	280	84	180
	4/25/1997	176.08	7.24	168.84	NA	NA	NA	NA	NA	NA
	4/28/1997	176.08	NM	NM	<250	7.9	<5.0	<5.0	<5.0	<50
	7/18/1997	176.08	7.86	168.22	1200	<5	<10	<10	<10	<100
	7/18/1997	176.08	NM	NM	630	31	<5.0	<5.0	<5.0	130
10/27/1997	176.08	7.91	168.17	<250	5.4	<5.0	<5.0	<5.0	<50	

**Table 1**  
**Historical Groundwater Elevations & Analytical Data**  
**TPH-g, BTEX, MtBE**  
**3519 Castro Valley Blvd, Castro Valley, CA**

Monitoring Well	Date	Top of casing elevation <sup>1</sup> (feet)	Depth to Groundwater (feet)	Groundwater Elevation (feet)	TPH-g (µg/L)	Benzene (µg/L)	Toluene (µg/L)	Ethyl benzene (µg/L)	Total Xylenes (µg/L)	MtBE (µg/L) 8260B
ESE-5 cont.	1/22/1998	176.08	4.64	171.44	170	7.7	<1.0	<1.0	<1.0	130
	4/23/1998	176.08	6.31	169.77	720	79	<5.0	9	<5.0	180
	7/29/1998	176.08	7.43	168.65	NA	NA	NA	NA	NA	NA
	7/30/1998	176.08	NM	NM	840	9.8	<1.0	4	<1.0	710
	12/17/1998	176.08	7.05	169.03	NA	NA	NA	NA	NA	NA
	3/19/1999	176.08	5.00	171.08	<250	<5.0	<5.0	<5.0	<5.0	<5.0
	6/23/1999	176.08	7.77	168.31	NA	NA	NA	NA	NA	NA
	9/27/1999	176.08	8.11	167.97	450	10	<5.0	6.3	<5.0	220
	12/9/1999	176.08	7.66	168.42	NA	NA	NA	NA	NA	NA
	3/9/2000	176.08	5.08	171.00	1700	170	2.5	45	6.4	140
	6/8/2000	176.08	7.36	168.72	NA	NA	NA	NA	NA	NA
	9/18/2000	176.08	7.71	168.37	130	0.65	<0.50	0.71	<0.50	51
	12/14/2000	176.08	2.36	173.72	NA	NA	NA	NA	NA	NA
	3/21/2001	176.08	7.42	168.66	1000	10.3	<2.5	11	<7.5	70.8
	6/18/2001	176.08	7.92	168.16	NA	NA	NA	NA	NA	NA
	9/18/2001	176.26	8.23	168.03	200	0.868	<0.50	0.55	<1.5	57.5
	12/13/2001	176.26	7.80	168.46	NA	NA	NA	NA	NA	NA
	3/14/2002	176.26	6.55	169.71	1300	17.1	1.35	15.4	1.42	37.4
	6/19/2002	176.26	7.83	168.43	NA	NA	NA	NA	NA	NA
	9/10/2002	176.26	8.22	168.04	680	9.9	<5.0	<5.0	<5.0	44
	12/16/2002	176.26	6.58	169.68	NA	NA	NA	NA	NA	NA
	3/11/2003	176.26	6.77	169.49	2100	14	<2.5	15	3	80
	6/17/2003	176.26	6.75	169.51	NA	NA	NA	NA	NA	NA
9/17/2003	176.26	8.48	167.78	970	10 C	<0.5	<0.5	5.3	34	
12/9/2003	176.26	7.32	168.94	700	6.5	<0.5	3.1	2.7 C	34	

**Table 1**  
**Historical Groundwater Elevations & Analytical Data**  
**TPH-g, BTEX, MtBE**  
**3519 Castro Valley Blvd, Castro Valley, CA**

Monitoring Well	Date	Top of casing elevation <sup>1</sup> (feet)	Depth to Groundwater (feet)	Groundwater Elevation (feet)	TPH-g (µg/L)	Benzene (µg/L)	Toluene (µg/L)	Ethyl benzene (µg/L)	Total Xylenes (µg/L)	MtBE (µg/L) 8260B
<b>ESE-5 cont.</b>	2/26/2004	176.26	5.21	171.05	2400 H	41	2.8 C	18	2.4 C	29
	5/21/2004	176.26	7.50	168.76	1500	2.6 C	<0.5	2.1 C	2.1 C	25
	8/10/2004	178.80	8.28	170.52	680	<0.5	<0.5	<0.5	<0.5	33
	10/19/2004	178.80	8.26	170.54	380	<0.5	<0.5	<0.5	1.4	39
	1/14/2005	178.80	5.16	173.64	2400	18	1.4	22	2.1	26
	4/14/2005	178.80	6.13	172.67	4800	7.75	1.26	14.3	<1.0	23.1
	7/7/2005	178.80	7.52	171.28	3240	0.78	<2.0	1.18	<1.0	36.6
	11/15/2005	178.80	7.85	170.95	1190	0.51	<2.0	<0.5	<1.0	30
	2/8/2006	178.80	5.83	172.97	2510	1.91	<2.0	2.82	<1.0	20.7
	4/27/2006	178.80	5.71	173.09	4,700	2.76	<2.0	4.77	<1.0	28.3
	8/1/2006	178.80	7.71	171.09	1,890	0.7	<2.0	0.75	<1.0	24.7
	10/19/2006	178.80	8.00	170.80	474	<0.5	<2.0	3.39	<1.0	29
	1/12/2007	178.80	7.41	171.39	868	2.18	<2.0	2.66	<2.0	16.3
	4/17/2007	178.80	7.51	171.29	1,240	10.2	<2.0	10.4	2.37	17.2
	<b>7/17/2007</b>	<b>178.80</b>	<b>7.47</b>	<b>171.33</b>	<b>836</b>	<b>3.1</b>	<b>&lt;2.0</b>	<b>4.91</b>	<b>2.35</b>	<b>25.8</b>
<b>MW-6</b>	7/28/1995	179.24	10.00	169.24	<50	<0.50	<0.50	<0.50	<1.0	NA
	11/17/1995	179.24	10.44	168.80	<50	<0.50	<0.50	<0.50	<1.0	<5.0
	2/7/1996	179.24	7.68	171.56	<50	<0.5	<1.0	<1.0	<1.0	<10
	4/23/1996	179.24	9.33	169.91	<50	<0.5	<1.0	<1.0	<1.0	<10
	7/9/1996	179.24	10.10	169.14	<50	<0.5	<1.0	<1.0	<1.0	<10
	10/10/1996	179.24	11.00	168.24	<50	<0.5	<1.0	<1.0	<1.0	<10
	1/20/1997	179.24	8.70	170.54	<50	<0.5	<1.0	<1.0	<1.0	<10
	4/25/1997	179.24	10.16	169.08	<50	<0.5	<1.0	<1.0	<1.0	<10
	7/18/1997	179.24	10.66	168.58	<50	<0.5	<1.0	<1.0	<1.0	<10
	10/27/1997	179.24	10.25	168.99	<50	<0.5	<1.0	<1.0	<1.0	<10

**Table 1**  
**Historical Groundwater Elevations & Analytical Data**  
**TPH-g, BTEX, MtBE**  
**3519 Castro Valley Blvd, Castro Valley, CA**

Monitoring Well	Date	Top of casing elevation <sup>1</sup> (feet)	Depth to Groundwater (feet)	Groundwater Elevation (feet)	TPH-g (µg/L)	Benzene (µg/L)	Toluene (µg/L)	Ethyl benzene (µg/L)	Total Xylenes (µg/L)	MtBE (µg/L) 8260B
MW-6 cont.	1/22/1998	179.24	7.76	171.48	<50	<0.5	<1.0	<1.0	<1.0	<10
	4/23/1998	179.24	9.10	170.14	<50	<0.5	<1.0	<1.0	<1.0	<10
	7/29/1998	179.24	10.40	168.84	NA	NA	NA	NA	NA	NA
	7/30/1998	179.24	NM	NM	<50	<0.5	<1.0	<1.0	<1.0	<10
	12/17/1998	179.24	9.40	169.84	NA	NA	NA	NA	NA	NA
	3/19/1999	179.24	9.10	170.14	NA	NA	NA	NA	NA	NA
	6/23/1999	179.24	9.79	169.45	NA	NA	NA	NA	NA	NA
	9/27/1999	179.24	10.10	169.14	NA	NA	NA	NA	NA	NA
	12/9/1999	179.24	9.97	169.27	NA	NA	NA	NA	NA	NA
	3/9/2000	179.24	8.56	170.68	NA	NA	NA	NA	NA	NA
	6/8/2000	179.24	9.11	170.13	NA	NA	NA	NA	NA	NA
	9/18/2000	179.24	9.77	169.47	NA	NA	NA	NA	NA	NA
	12/14/2000	179.24	9.17	170.07	NA	NA	NA	NA	NA	NA
	3/21/2001	179.24	9.82	169.42	NA	NA	NA	NA	NA	NA
	6/18/2001	179.24	10.19	169.05	NA	NA	NA	NA	NA	NA
	9/18/2001	179.24	10.25	168.99	NA	NA	NA	NA	NA	NA
	12/13/2001	179.24	9.75	169.49	NA	NA	NA	NA	NA	NA
	3/14/2002	179.24	9.53	169.71	NA	NA	NA	NA	NA	NA
	6/19/2002	179.24	9.87	169.37	NA	NA	NA	NA	NA	NA
	9/10/2002	179.24	9.49	169.75	NA	NA	NA	NA	NA	NA
	12/16/2002	179.24	8.39	170.85	NA	NA	NA	NA	NA	NA
	3/11/2003	179.24	9.40	169.84	NA	NA	NA	NA	NA	NA
	6/17/2003	179.24	9.71	169.53	NA	NA	NA	NA	NA	NA
9/17/2003	179.24	10.21	169.03	<50	<0.5	<0.5	<0.5	<0.5	<2.0	
12/9/2003	179.24	9.66	169.58	<50	<0.5	<0.5	<0.5	<0.5	<0.5	



**Table 1**  
**Historical Groundwater Elevations & Analytical Data**  
**TPH-g, BTEX, MtBE**  
**3519 Castro Valley Blvd, Castro Valley, CA**

Monitoring Well	Date	Top of casing elevation <sup>1</sup> (feet)	Depth to Groundwater (feet)	Groundwater Elevation (feet)	TPH-g (µg/L)	Benzene (µg/L)	Toluene (µg/L)	Ethyl benzene (µg/L)	Total Xylenes (µg/L)	MtBE (µg/L) 8260B
MW-6 cont.	2/26/2004	179.24	7.83	171.41	<50	<0.5	<0.5	<0.5	<0.5	<0.5
	5/21/2004	179.24	9.75	169.49	<50	<0.5	<0.5	<0.5	<0.5	<0.5
	8/10/2004	181.80	10.28	171.52	<50	<0.5	<0.5	<0.5	<0.5	<0.5
	10/19/2004	181.80	9.91	171.89	<50	<0.5	<0.5	<0.5	<0.5	<0.5
	1/14/2005	181.80	8.40	173.40	<50	0.6	<0.5	<0.5	<0.5	<0.5
	4/14/2005	181.80	9.04	172.76	<200	<0.5	<0.5	<0.5	<1.0	<0.5
	7/7/2005	181.80	9.94	171.86	<200	<0.5	<2.00	<0.5	<1.00	<0.5
	11/15/2005	181.80	9.98	171.82	<50	<0.5	<2.0	<0.5	<1.0	<0.5
	2/8/2006	181.80	9.91	171.89	<50	<0.5	<2.0	<0.5	<1.0	<0.5
	4/27/2006	181.80	9.54	172.26	<50	<0.5	<2.0	<0.5	<1.0	<0.5
	8/1/2006	181.80	9.61	172.19	<50	<0.5	<2.0	<0.5	<1.0	0.51
	10/19/2006	181.80	10.23	171.57	<50	<0.5	<2.0	<0.5	<1.0	0.63
	1/12/2007	181.80	10.13	171.67	<50	<0.5	<2.0	<0.5	<2.0	<0.5
	4/17/2007	181.80	10.22	171.58	<50	<0.5	<2.0	<0.5	<2.0	<0.5
	<b>7/17/2007</b>	<b>181.80</b>	<b>9.76</b>	<b>172.04</b>	<b>&lt;50</b>	<b>&lt;0.5</b>	<b>&lt;2.0</b>	<b>&lt;0.5</b>	<b>&lt;2.0</b>	<b>&lt;0.5</b>
MW-7	7/28/1995	176.55	9.25	167.30	<50	0.54	0.54	<0.50	<1.0	NA
	11/17/1995	176.55	9.73	166.82	1100	<10	<10	<10	<20	4000
	2/7/1996	176.55	6.48	170.07	610	<0.50	<1.0	<1.0	<1.0	2500
	2/7/1996	176.55	NM	NM	280	<0.50	<1.0	<1.0	<1.0	2600
	4/23/1996	176.55	8.37	168.18	110	<0.50	<1.0	<1.0	<1.0	3500
	4/23/1996	176.55	NM	NM	230	<0.50	<1.0	<1.0	<1.0	3500
	7/9/1996	176.55	9.24	167.31	230	<0.50	<1.0	<1.0	<1.0	4296
	7/9/1996	176.55	NM	NM	220	<0.50	<1.0	<1.0	<1.0	4400
	10/10/1996	176.55	10.05	166.50	NA	NA	NA	NA	NA	NA
	10/11/1996	176.55	NM	NM	1600	<0.50	<1.0	<1.0	<1.0	3000

**Table 1**  
**Historical Groundwater Elevations & Analytical Data**  
**TPH-g, BTEX, MtBE**  
**3519 Castro Valley Blvd, Castro Valley, CA**

Monitoring Well	Date	Top of casing elevation <sup>1</sup> (feet)	Depth to Groundwater (feet)	Groundwater Elevation (feet)	TPH-g (µg/L)	Benzene (µg/L)	Toluene (µg/L)	Ethyl benzene (µg/L)	Total Xylenes (µg/L)	MtBE (µg/L) 8260B
MW-7 cont.	1/20/1997	176.55	7.51	169.04	<50	0.63	<1.0	<1.0	<1.0	2600
	4/25/1997	176.55	8.79	167.76	NA	NA	NA	NA	NA	NA
	4/28/1997	176.55	NM	NM	1500	<0.50	<1.0	<1.0	<1.0	3600
	4/28/1997	176.55	NM	NM	7700	3500	<25	74	37	<250
	7/18/1997	176.55	9.50	167.05	1400	<0.50	<1.0	<1.0	<1.0	2600
	10/27/1997	176.55	9.19	167.36	420	<0.50	<1.0	<1.0	<1.0	560
	1/22/1998	176.55	6.45	170.10	3100	<0.50	<1.0	<1.0	1.4	2300
	4/23/1998	176.55	8.02	168.53	3800	<0.50	<1.0	<1.0	<1.0	3800
	7/29/1998	176.55	8.88	167.67	NA	NA	NA	NA	NA	NA
	7/30/1998	176.55	NM	NM	500	<2.5	<5.0	<5.0	<5.0	<50
	7/30/1998	176.55	NM	NM	4700	<12	<25	<25	<25	4700
	12/17/1998	176.55	8.62	167.93	NA	NA	NA	NA	NA	NA
	3/19/1999	176.55	7.52	169.03	3800	<1.0	<1.0	<1.0	<1.0	3800
	6/23/1999	176.55	9.63	166.92	NA	NA	NA	NA	NA	NA
	9/27/1999	176.55	9.39	167.16	140	<10	<10	<10	<10	3800
	12/9/1999	176.55	9.94	166.61	NA	NA	NA	NA	NA	NA
	3/9/2000	176.55	6.72	169.83	<50	<0.50	<0.50	<0.50	<0.50	1400
	6/8/2000	176.55	7.38	169.17	NA	NA	NA	NA	NA	NA
	9/18/2000	176.55	9.18	167.37	190	<0.50	<0.50	<0.50	<0.50	580
	12/14/2000	176.55	8.13	168.42	NA	NA	NA	NA	NA	NA
	3/21/2001	176.55	8.98	167.57	1300	<0.50	<0.50	<0.50	<1.5	1460
	6/18/2001	176.55	9.68	166.87	NA	NA	NA	NA	NA	NA
	9/18/2001	176.55	9.80	166.75	<0.50	<0.50	<0.50	<0.50	<1.5	94.9
	12/13/2001	176.55	9.26	167.29	NA	NA	NA	NA	NA	NA
	3/14/2002	176.55	8.69	167.86	800	<0.50	<0.50	<0.50	<1.0	952
	6/19/2002	176.55	9.06	167.49	NA	NA	NA	NA	NA	NA
9/10/2002	176.55	9.23	167.32	260	<2.0	<2.0	<2.0	<2.0	580	
12/16/2002	176.55	7.77	168.78	NA	NA	NA	NA	NA	NA	

**Table 1**  
**Historical Groundwater Elevations & Analytical Data**  
**TPH-g, BTEX, MtBE**  
**3519 Castro Valley Blvd, Castro Valley, CA**

Monitoring Well	Date	Top of casing elevation <sup>1</sup> (feet)	Depth to Groundwater (feet)	Groundwater Elevation (feet)	TPH-g (µg/L)	Benzene (µg/L)	Toluene (µg/L)	Ethyl benzene (µg/L)	Total Xylenes (µg/L)	MtBE (µg/L) 8260B
MW-7 cont.	3/11/2003	176.55	8.30	168.25	620	<2.5	<2.5	<2.5	<2.5	1100
	6/17/2003	176.55	9.51	167.04	NA	NA	NA	NA	NA	NA
	9/17/2003	176.55	9.52	167.03	<50	<0.5	<0.5	<0.5	<0.5	460
	12/9/2003	176.55	8.99	167.56	<50	<0.5	<0.5	<0.5	<0.5	420
	2/26/2004	176.55	6.55	170.00	<50	<0.5	<0.5	<0.5	<0.5	330
	5/21/2004	176.55	8.90	167.65	<50	<0.5	<0.5	<0.5	<0.5	630
	8/10/2004	179.11	9.58	169.53	<50	<0.5	<0.5	<0.5	<0.5	750
	10/19/2004	179.11	9.20	169.91	<50	<0.5	<0.5	<0.5	<0.5	550
	1/14/2005	179.11	7.25	171.86	<50	<2.0	<2.0	<2.0	<2.0	250
	4/14/2005	179.11	7.94	171.17	<200	<0.5	<0.5	<0.5	<1.0	285
	7/7/2005	179.11	9.08	170.03	<400	<1.0	<4.0	<1.0	<2.0	452
	11/15/2005	179.11	9.14	169.97	<50	<0.5	<2.0	<0.5	<1.0	110
	2/8/2006	179.11	7.93	171.18	<50	<0.5	<2.0	<0.5	<1.0	101
	4/27/2006	179.11	8.40	170.71	<50	<0.5	<2.0	<0.5	<1.0	131
	8/1/2006	179.11	8.89	170.22	<50	<0.5	<2.0	<0.5	<1.0	68.6
	10/19/2006	179.11	9.44	169.67	<50	<0.5	<2.0	<0.5	<1.0	65.5
	1/12/2007	179.11	8.91	170.20	<50	<0.5	<2.0	<0.5	<2.0	38
4/17/2007	179.11	8.58	170.53	<50	<0.5	<2.0	<0.5	<2.0	24.7	
	<b>7/17/2007</b>	<b>179.11</b>	<b>9.04</b>	<b>170.07</b>	<b>&lt;50</b>	<b>2.07</b>	<b>&lt;2.0</b>	<b>&lt;0.5</b>	<b>&lt;2.0</b>	<b>29.3</b>
MW-8	7/28/1995	176.34	7.80	168.54	1,100	<2.5	<2.5	<2.5	<5.0	NA
	11/17/1995	176.34	8.29	168.05	8,300	75	5.3	670	240	140
	2/7/1996	176.34	4.99	171.35	2,300	33	<10	190	216	<100
	4/23/1996	176.34	6.09	170.25	2,000	390	<10	150	26	<250

**Table 1**  
**Historical Groundwater Elevations & Analytical Data**  
**TPH-g, BTEX, MtBE**  
**3519 Castro Valley Blvd, Castro Valley, CA**

<b>Monitoring Well</b>	<b>Date</b>	<b>Top of casing elevation <sup>1</sup> (feet)</b>	<b>Depth to Groundwater (feet)</b>	<b>Groundwater Elevation (feet)</b>	<b>TPH-g (µg/L)</b>	<b>Benzene (µg/L)</b>	<b>Toluene (µg/L)</b>	<b>Ethyl benzene (µg/L)</b>	<b>Total Xylenes (µg/L)</b>	<b>MtBE (µg/L) 8260B</b>
<b>QC-2</b>	4/1/1993	NM	NM	NM	<50	<0.5	<0.5	<0.5	<0.5	NA
	6/29/1993	NM	NM	NM	<50	<0.5	<0.5	<0.5	<0.5	NA
	9/23/1993	NM	NM	NM	<50	<0.5	<0.5	<0.5	<0.5	NA
	12/10/1993	NM	NM	NM	<50	<0.5	<0.5	<0.5	<0.5	<5.0
	2/17/1994	NM	NM	NM	<50	<0.5	<0.5	<0.5	<0.5	NA
	8/8/1994	NM	NM	NM	<50	<0.5	<0.5	<0.5	<0.5	NA
	10/12/1994	NM	NM	NM	<50	<0.5	<0.5	<0.5	<0.5	NA
	1/19/1995	NM	NM	NM	<50	<0.5	<0.5	<0.5	<1.0	NA
	5/2/1995	NM	NM	NM	<50	<0.50	<0.50	<0.50	<1.0	NA
	7/28/1995	NM	NM	NM	<50	<0.50	<0.50	<0.50	<1.0	NA
	11/17/1995	NM	NM	NM	<50	<0.50	<0.50	<0.50	<1.0	<5.0
	2/7/1996	NM	NM	NM	<50	<0.5	<1.0	<1.0	<1.0	<10
	4/23/1996	NM	NM	NM	<50	<0.5	<1.0	<1.0	<1.0	<10
	7/9/1996	NM	NM	NM	<50	<0.5	<1.0	<1.0	<1.0	<10
<b>SOMA-1</b>	8/10/2004	180.95	11.53	169.42	84	<0.5	<0.5	1.5 C	2.2	2100
	10/19/2004	180.95	10.41	170.54	56	<0.5	<0.5	1.3 C	1.4 C	1600
	1/14/2005	180.95	9.68	171.27	58	<3.1	<3.1	<3.1	<3.1	330
	4/14/2005	180.95	9.37	171.58	<2200	<5.5	<5.5	<5.5	<11	668
	7/7/2005	180.95	10.21	170.74	<860	<2.15	<8.6	<2.15	<4.3	591
	11/15/2005	180.95	10.70	170.25	<50	<0.5	<2.0	1.1	<1.0	256
	2/8/2006	180.95	9.30	171.65	127	1.56	<2.0	3.23	3.12	176
	4/27/2006	180.95	9.64	171.31	81.6	1.14	<2.0	2.8	<1.0	189
	8/1/2006	180.95	10.25	170.70	<50	1.07	<2.0	1.46	<1.0	122
	10/19/2006	180.95	10.73	170.22	<50	0.68	<2.0	4.17	<1.0	116

**Table 1**  
**Historical Groundwater Elevations & Analytical Data**  
**TPH-g, BTEX, MtBE**  
**3519 Castro Valley Blvd, Castro Valley, CA**

Monitoring Well	Date	Top of casing elevation <sup>1</sup> (feet)	Depth to Groundwater (feet)	Groundwater Elevation (feet)	TPH-g (µg/L)	Benzene (µg/L)	Toluene (µg/L)	Ethyl benzene (µg/L)	Total Xylenes (µg/L)	MtBE (µg/L) 8260B
SOMA-1 cont	1/12/2007	180.95	10.38	170.57	<50	<0.5	<2.0	<0.5	<2.0	68.7
	4/17/2007	180.95	10.09	170.86	<50	5.76	<2.0	4.33	2.59	33.4
	<b>7/17/2007</b>	<b>180.95</b>	<b>10.35</b>	<b>170.60</b>	<b>&lt;50</b>	<b>14.8</b>	<b>&lt;2.0</b>	<b>4.63</b>	<b>3.32</b>	<b>39.4</b>
SOMA-2	8/10/2004	178.99	10.69	168.30	<50	<0.5	<0.5	<0.5	<0.5	0.8
	10/19/2004	178.99	10.75	168.24	<50	<0.5	<0.5	<0.5	<0.5	2.4
	1/14/2005	178.99	9.45	169.54	<50	<0.5	<0.5	<0.5	<0.5	1.1
	4/14/2005	178.99	10.46	168.53	<200	<0.5	<0.5	<0.5	<1.0	<0.5
	7/7/2005	178.99	11.81	167.18	<200	<0.5	<2.0	<0.5	<1.0	<0.5
	11/15/2005	178.99	12.02	166.97	<50	<0.5	<2.0	<0.5	<1.0	1.61
	2/8/2006	178.99	11.88	167.11	<50	<0.5	<2.0	<0.5	<1.0	<0.5
	4/27/2006	178.99	10.95	168.04	<50	<0.5	<2.0	<0.5	<1.0	<0.5
	8/1/2006	178.99	11.85	167.14	<50	<0.5	<2.0	<0.5	<1.0	1.11
	10/19/2006	178.99	10.62	168.37	<50	<0.5	<2.0	<0.5	<1.0	1.36
	1/12/2007	178.99	10.26	168.73	<50	<0.5	<2.0	<0.5	<2.0	<0.5
	4/17/2007	178.99	11.88	167.11	<50	<0.5	<2.0	<0.5	<2.0	0.87
	<b>7/17/2007</b>	<b>178.99</b>	<b>10.84</b>	<b>168.15</b>	<b>&lt;50</b>	<b>&lt;0.5</b>	<b>&lt;2.0</b>	<b>&lt;0.5</b>	<b>&lt;2.0</b>	<b>&lt;0.5</b>
SOMA-3	8/10/2004	176.81	9.97	166.84	<50	<0.5	<0.5	<0.5	<0.5	<0.5
	10/19/2004	176.81	9.59	167.22	<50	<0.5	<0.5	<0.5	<0.5	<0.5
	1/14/2005	176.81	8.23	168.58	<50	<0.5	<0.5	<0.5	<0.5	<0.5
	4/14/2005	176.81	8.64	168.17	<200	<0.5	<0.5	<0.5	<1.0	<0.5
	7/7/2005	176.81	9.60	167.21	<200	<0.5	<2.0	<0.5	<1.0	<0.5
	11/15/2005	176.81	10.01	166.80	<50	<0.5	<2.0	<0.5	<1.0	5.1
	2/8/2006	176.81	8.80	168.01	<50	<0.5	<2.0	<0.5	<1.0	7.16
	4/27/2006	176.81	9.00	167.81	<50	<0.5	<2.0	<0.5	<1.0	14.2
	8/1/2006	176.81	9.91	166.90	<50	<0.5	<2.0	<0.5	<1.0	7.29
	10/19/2006	176.81	10.21	166.60	<50	<0.5	<2.0	<0.5	<1.0	41.4

**Table 1**  
**Historical Groundwater Elevations & Analytical Data**  
**TPH-g, BTEX, MtBE**  
**3519 Castro Valley Blvd, Castro Valley, CA**

Monitoring Well	Date	Top of casing elevation <sup>1</sup> (feet)	Depth to Groundwater (feet)	Groundwater Elevation (feet)	TPH-g (µg/L)	Benzene (µg/L)	Toluene (µg/L)	Ethyl benzene (µg/L)	Total Xylenes (µg/L)	MtBE (µg/L) 8260B
SOMA-3 cont	1/12/2007	176.81	9.73	167.08	<50	<0.5	<2.0	<0.5	<2.0	20.9
	4/17/2007	176.81	9.81	167.00	<50	<0.5	<2.0	<0.5	<2.0	32.1
	<b>7/17/2007</b>	<b>176.81</b>	<b>10.06</b>	<b>166.75</b>	<b>&lt;50</b>	<b>&lt;0.5</b>	<b>&lt;2.0</b>	<b>&lt;0.5</b>	<b>&lt;2.0</b>	<b>23.6</b>
SOMA-4	8/10/2004	176.94	9.44	167.50	140	0.98	<0.5	7.8	<0.5	11
	10/19/2004	176.94	9.91	167.03	150	<0.5	<0.5	10	<0.5	8.8
	1/14/2005	176.94	8.36	168.58	500	3.7	<0.5	53	<0.5	7.6
	4/14/2005	176.94	7.89	169.05	<200	0.74	<0.5	3.21	<1.0	5.65
	7/7/2005	176.94	11.62	165.32	<200	<0.5	<2.0	0.56	<1.0	7.09
	11/15/2005	176.94	9.33	167.61	<50	<0.5	<2.0	<0.5	<1.0	8.6
	2/8/2006	176.94	9.18	167.76	55.8	<0.5	<2.0	0.85	<1.0	10.4
	4/27/2006	176.94	8.75	168.19	172	1.35	<2.0	8.83	<1.0	11.7
	8/1/2006	176.94	9.52	167.42	<50	0.52	<2.0	1.53	<1.0	14.1
	10/19/2006	176.94	9.51	167.43	<50	<0.5	<2.0	<0.5	<1.0	19.2
	1/12/2007	176.94	8.98	167.96	<50	<0.5	<2.0	<0.5	<2.0	20.4
	4/17/2007	176.94	8.96	167.98	<50	<0.5	<2.0	4.33	<2.0	15.8
	<b>7/17/2007</b>	<b>176.94</b>	<b>9.31</b>	<b>167.63</b>	<b>&lt;50</b>	<b>&lt;0.5</b>	<b>&lt;2.0</b>	<b>4.47</b>	<b>&lt;2.0</b>	<b>13.3</b>

Notes:

< : Not detected above laboratory reporting limit.

1 Top of Casing Elevations were resurveyed by Kier & Wright Engineers Surveyors of Pleasanton, CA on June 21, 2004.

C: Presence confirmed, but RPD between columns exceeds 40%.

H: Heavier hydrocarbons contributed to the quantitation.

NA: Not Analyzed. Due to construction activities in the Third Quarter 2003, which consisted of the replacement of the USTs and dispensers, wells ESE-1 & ESE-2 were inaccessible. Well ESE-2 also inaccessible during the First Quarter 2004.

NM: Not Measured

Well ESE-2 was covered over with dirt during the First Quarter 2007 monitoring event.

Z: Sample exhibits unknown single peak or peaks.

The Third Quarter 2003 was the first time that SOMA analyzed groundwater samples at the site.

The Third Quarter 2004 was the first time that SOMA analyzed groundwater samples at wells SOMA-1 to SOMA-4.

**Table 2**  
**Historical Groundwater Analytical Data**  
**Gasoline Oxygenates & Lead Scavengers**  
**3519 Castro Valley Blvd, Castro Valley, CA**

<b>Monitoring Well</b>	<b>Date</b>	<b>TBA (µg/L)</b>	<b>DIPE (µg/L)</b>	<b>ETBE (µg/L)</b>	<b>TAME (µg/L)</b>	<b>ETHANOL (µg/L)</b>	<b>1,2-DCA (µg/L)</b>	<b>EDB (µg/L)</b>
<b>ESE-1</b>	6/17/2003	<400	<10	<10	18	NA	NA	NA
	9/17/2003	NA	NA	NA	NA	NA	NA	NA
	12/9/2003	290	<1.0	<1.0	9.5	<2,000	<1.0	<1.0
	2/26/2004	410	<0.5	<0.5	9.7	<1000	<0.5	<0.5
	5/21/2004	190	<0.5	<0.5	<0.5	<1000	<0.5	<0.5
	8/10/2004	180	<0.5	<0.5	<0.5	<1000	<0.5	<0.5
	10/19/2004	270	<0.7	<0.7	4.4	<1400	9.9	<0.7
	1/14/2005	280	<1.3	<1.3	<1.3	<2,500	<1.3	<1.3
	4/14/2005	144	<2.15	<2.15	<8.6	<4300	<2.15	<2.15
	7/7/2005	119	<2.15	<2.15	<8.6	<4300	<2.15	<2.15
	11/15/2005	107	<0.5	<0.5	<2.0	<1000	<0.5	<0.5
	2/8/2006	181	<2.15	<2.15	<8.6	<4300	<2.15	<2.15
	4/27/2006	261	<2.15	<2.15	<8.6	<4300	<2.15	<2.15
	8/1/2006	165	<1.0	<1.0	<4.0	<2000	<1.0	<1.0
	10/19/2006	154	<1.0	<1.0	<4.0	<2000	<1.0	<1.0
	1/12/2007	103	<0.5	<0.5	<2.0	<1000	<0.5	<0.5
	4/17/2007	80.5	<0.5	<0.5	<2.0	<1000	<0.5	<0.5
<b>7/17/2007</b>	<b>128</b>	<b>&lt;0.5</b>	<b>&lt;0.5</b>	<b>&lt;2.0</b>	<b>&lt;1000</b>	<b>&lt;0.5</b>	<b>&lt;0.5</b>	

**Table 2**  
**Historical Groundwater Analytical Data**  
**Gasoline Oxygenates & Lead Scavengers**  
**3519 Castro Valley Blvd, Castro Valley, CA**

<b>Monitoring Well</b>	<b>Date</b>	<b>TBA (µg/L)</b>	<b>DIPE (µg/L)</b>	<b>ETBE (µg/L)</b>	<b>TAME (µg/L)</b>	<b>ETHANOL (µg/L)</b>	<b>1,2-DCA (µg/L)</b>	<b>EDB (µg/L)</b>
<b>ESE-2</b>	6/17/2003	<4000	<100	<100	<100	NA	NA	NA
	9/17/2003	NA	NA	NA	NA	NA	NA	NA
	12/9/2003	500	<13	<13	77	<25,000	<13	<13
	2/26/2004	1200	<0.5	<0.5	92	<1000	<0.5	<0.5
	5/21/2004	2400	<10	<10	25	<20,000	<10	<10
	8/10/2004	2300	<2.5	<2.5	12	<5000	<2.5	<2.5
	10/19/2004	1800	<3.6	<3.6	8.6	<7100	<3.6	<3.6
	1/14/2005	470	<8.3	<8.3	28	<17,000	<8.3	<8.3
	4/14/2005	<10.8	<2.15	<2.15	17.9	<4300	<2.15	<2.15
	7/7/2005	109	<2.15	<2.15	9.7	<4300	<2.15	<2.15
	11/15/2005	64.7	<0.5	<0.5	3.43	<1000	<0.5	<0.5
	2/8/2006	46.4	<2.15	<2.15	11	<4300	<2.15	<2.15
	4/27/2006	47.7	<1.0	<1.0	8.29	<2000	<1.0	<1.0
	8/1/2006	20.6	<1.0	<1.0	4.67	<2000	<1.0	<1.0
	10/19/2006	28.9	<0.5	<0.5	4.55	<1000	<0.5	<0.5
	1/12/2007	NA	NA	NA	NA	NA	NA	NA
	4/17/2007	60.8	<0.5	<0.5	3.85	<1000	<0.5	<0.5
<b>7/17/2007</b>	<b>62.3</b>	<b>&lt;0.5</b>	<b>&lt;0.5</b>	<b>&lt;0.5</b>	<b>2.95</b>	<b>&lt;1000</b>	<b>&lt;0.5</b>	<b>&lt;0.5</b>
<b>ESE-3</b>	6/17/2003	<200	<5.0	<5.0	<5.0	NA	NA	NA
<b>ESE-5</b>	9/17/2003	<10	<0.5	<0.5	<0.5	<1000	<0.5	<0.5
	12/9/2003	<10	<0.5	<0.5	<0.5	<1,000	<0.5	<0.5
	2/26/2004	<10	<0.5	<0.5	<0.5	<1,000	<0.5	<0.5
	5/21/2004	<10	<0.5	<0.5	<0.5	<1,000	<0.5	<0.5
	8/10/2004	<10	<0.5	<0.5	<0.5	<1,000	<0.5	<0.5
	10/19/2004	<10	<0.5	<0.5	<0.5	<1000	<0.5	<0.5



**Table 2**  
**Historical Groundwater Analytical Data**  
**Gasoline Oxygenates & Lead Scavengers**  
**3519 Castro Valley Blvd, Castro Valley, CA**

<b>Monitoring Well</b>	<b>Date</b>	<b>TBA (µg/L)</b>	<b>DIPE (µg/L)</b>	<b>ETBE (µg/L)</b>	<b>TAME (µg/L)</b>	<b>ETHANOL (µg/L)</b>	<b>1,2-DCA (µg/L)</b>	<b>EDB (µg/L)</b>
<b>ESE-5 cont.</b>	1/14/2005	<10	<0.5	<0.5	<0.5	<1000	<0.5	<0.5
	4/14/2005	17	<0.5	<0.5	<2.0	<1000	<0.5	<0.5
	7/7/2005	<10	<0.5	<0.5	<2.0	<1000	<0.5	<0.5
	11/15/2005	<10	<0.5	<0.5	<2.0	<1000	<0.5	<0.5
	2/8/2006	<10	<0.5	<0.5	<2.0	<1000	<0.5	<0.5
	4/27/2006	<10	<0.5	<0.5	<2.0	<1000	<0.5	<0.5
	8/1/2006	<10	<0.5	<0.5	<2.0	<1000	<0.5	<0.5
	10/19/2006	<10	<0.5	<0.5	<2.0	<1000	<0.5	<0.5
	1/12/2007	<2.0	<0.5	<0.5	<2.0	<1000	<0.5	<0.5
	4/17/2007	8.7	<0.5	<0.5	<2.0	<1000	<0.5	<0.5
	<b>7/17/2007</b>	<b>15.4</b>	<b>&lt;0.5</b>	<b>&lt;0.5</b>	<b>&lt;2.0</b>	<b>&lt;1000</b>	<b>&lt;0.5</b>	<b>&lt;0.5</b>
<b>MW-6</b>	9/17/2003	<10	<0.5	<0.5	<0.5	<1000	<0.5	<0.5
	12/9/2003	<10	<0.5	<0.5	<0.5	<1,000	<0.5	<0.5
	2/26/2004	<10	<0.5	<0.5	<0.5	<1,000	<0.5	<0.5
	5/21/2004	<10	<0.5	<0.5	<0.5	<1,000	<0.5	<0.5
	8/10/2004	<10	<0.5	<0.5	<0.5	<1,000	<0.5	<0.5
	10/19/2004	<10	<0.5	<0.5	<0.5	<1000	<0.5	<0.5
	1/14/2005	<10	<0.5	<0.5	<0.5	<1000	<0.5	<0.5
	4/14/2005	<2.5	<0.5	<0.5	<2.0	<1000	<0.5	<0.5
	7/7/2005	<10	<0.5	<0.5	<2.0	<1000	<0.5	<0.5
	11/15/2005	<10	<0.5	<0.5	<2.0	<1000	<0.5	<0.5
	2/8/2006	<10	<0.5	<0.5	<2.0	<1000	<0.5	<0.5
	4/27/2006	<10	<0.5	<0.5	<2.0	<1000	<0.5	<0.5
	8/1/2006	<10	<0.5	<0.5	<2.0	<1000	<0.5	<0.5
	10/19/2006	<10	<0.5	<0.5	<2.0	<1000	<0.5	<0.5
	1/12/2007	<2.0	<0.5	<0.5	<2.0	<1000	<0.5	<0.5
4/17/2007	<2.0	<0.5	<0.5	<2.0	<1000	<0.5	<0.5	
	<b>7/17/2007</b>	<b>&lt;2.0</b>	<b>&lt;0.5</b>	<b>&lt;0.5</b>	<b>&lt;2.0</b>	<b>&lt;1000</b>	<b>&lt;0.5</b>	<b>&lt;0.5</b>

**Table 2**  
**Historical Groundwater Analytical Data**  
**Gasoline Oxygenates & Lead Scavengers**  
**3519 Castro Valley Blvd, Castro Valley, CA**

Monitoring Well	Date	TBA (µg/L)	DIPE (µg/L)	ETBE (µg/L)	TAME (µg/L)	ETHANOL (µg/L)	1,2-DCA (µg/L)	EDB (µg/L)
<b>MW-7</b>	9/17/2003	<10	<0.5	<0.5	9.8	<1000	<0.5	<0.5
	12/9/2003	<25	<1.3	<1.3	8.1	<2500	<1.3	<1.3
	2/26/2004	<10	<0.5	<0.5	9.9	<1000	<0.5	<0.5
	5/21/2004	<10	<0.5	<0.5	<0.5	<1,000	<0.5	<0.5
	8/10/2004	<25	<1.3	<1.3	19	<2500	<1.3	<1.3
	10/19/2004	<100	<5.0	<5.0	11	<10,000	<5.0	<5.0
	1/14/2005	<40	<2.0	<2.0	5.1	<4,000	<2.0	<2.0
	4/14/2005	2.62	<0.5	<0.5	4.57	<1000	<0.5	<0.5
	7/7/2005	55.6	<1.0	<1.0	10.2	<2000	<1.0	<1.0
	11/15/2005	10.6	<0.5	<0.5	2.07	<1000	<0.5	<0.5
	2/8/2006	<10	<0.5	<0.5	2.19	<1000	<0.5	<0.5
	4/27/2006	<10	<0.5	<0.5	2.63	<1000	<0.5	<0.5
	8/1/2006	<10	<0.5	<0.5	<2.0	<1000	<0.5	<0.5
	10/19/2006	<10	<0.5	<0.5	<2.0	<1000	<0.5	<0.5
	1/12/2007	<2.0	<0.5	<0.5	<2.0	<1000	<0.5	<0.5
	4/17/2007	11.6	<0.5	<0.5	<2.0	<1000	<0.5	<0.5
	<b>7/17/2007</b>	<b>13.3</b>	<b>&lt;0.5</b>	<b>&lt;0.5</b>	<b>&lt;2.0</b>	<b>&lt;1000</b>	<b>&lt;0.5</b>	<b>&lt;0.5</b>
<b>SOMA-1</b>	8/10/2004	2300	<6.3	<6.3	53	<13000	<6.3	<6.3
	10/19/2004	2400	<13	<13	36	<25,000	<13	<13
	1/14/2005	530	<3.1	<3.1	7.1	<6,300	<3.1	<3.1
	4/14/2005	<27.5	<5.5	<5.5	<22	<11000	<5.5	<5.5
	7/7/2005	2180	<2.15	<2.15	12.9	<4300	<2.15	<2.15
	11/15/2005	792	<0.5	<0.5	5.01	<1000	<0.5	<0.5
	2/8/2006	618	<0.5	<0.5	3.67	<1000	<0.5	<0.5
	4/27/2006	983	<0.5	<0.5	3.48	<1000	<0.5	<0.5
	8/1/2006	639	<0.5	<0.5	2.27	<1000	<0.5	<0.5
10/19/2006	603	<0.5	<0.5	2.25	<1000	<0.5	<0.5	

**Table 2**  
**Historical Groundwater Analytical Data**  
**Gasoline Oxygenates & Lead Scavengers**  
**3519 Castro Valley Blvd, Castro Valley, CA**

<b>Monitoring Well</b>	<b>Date</b>	<b>TBA (µg/L)</b>	<b>DIPE (µg/L)</b>	<b>ETBE (µg/L)</b>	<b>TAME (µg/L)</b>	<b>ETHANOL (µg/L)</b>	<b>1,2-DCA (µg/L)</b>	<b>EDB (µg/L)</b>
<b>SOMA-1 cont.</b>	1/12/2007	396	<0.5	<0.5	<2.0	<1000	<0.5	<0.5
	4/17/2007	148	<0.5	<0.5	<2.0	<1000	<0.5	<0.5
	<b>7/17/2007</b>	<b>555</b>	<b>&lt;0.5</b>	<b>&lt;0.5</b>	<b>&lt;2.0</b>	<b>&lt;1000</b>	<b>&lt;0.5</b>	<b>&lt;0.5</b>
<b>SOMA-2</b>	8/10/2004	<10	<0.5	<0.5	<0.5	<1000	<0.5	<0.5
	10/19/2004	<10	<0.5	<0.5	<0.5	<1000	<0.5	<0.5
	1/14/2005	<10	<0.5	<0.5	<0.5	<1000	<0.5	<0.5
	4/14/2005	<2.5	<0.5	<0.5	<2.0	<1000	<0.5	<0.5
	7/7/2005	<10	<0.5	<0.5	<2.0	<1000	<0.5	<0.5
	11/15/2005	<10	<0.5	<0.5	<2.0	<1000	<0.5	<0.5
	2/8/2006	<10	<0.5	<0.5	<2.0	<1000	<0.5	<0.5
	4/27/2006	<10	<0.5	<0.5	<2.0	<1000	<0.5	<0.5
	8/1/2006	<10	<0.5	<0.5	<2.0	<1000	<0.5	<0.5
	10/19/2006	<10	<0.5	<0.5	<2.0	<1000	<0.5	<0.5
	1/12/2007	<2.0	<0.5	<0.5	<2.0	<1000	<0.5	<0.5
	4/17/2007	14.6	<0.5	<0.5	<2.0	<1000	<0.5	<0.5
	<b>7/17/2007</b>	<b>2.58</b>	<b>&lt;0.5</b>	<b>&lt;0.5</b>	<b>&lt;2.0</b>	<b>&lt;1000</b>	<b>&lt;0.5</b>	<b>&lt;0.5</b>
<b>SOMA-3</b>	8/10/2004	<10	<0.5	<0.5	<0.5	<1000	<0.5	<0.5
	10/19/2004	<10	<0.5	<0.5	<0.5	<1,000	<0.5	<0.5
	1/14/2005	<10	<0.5	<0.5	<0.5	<1,000	<0.5	<0.5
	4/14/2005	<2.5	<0.5	<0.5	<2.0	<1000	<0.5	<0.5
	7/7/2005	<10	<0.5	<0.5	<2.0	<1000	<0.5	<0.5
	11/15/2005	<10	<0.5	<0.5	<2.0	<1000	<0.5	<0.5
	2/8/2006	<10	<0.5	<0.5	<2.0	<1000	<0.5	<0.5
	4/27/2006	<10	<0.5	<0.5	<2.0	<1000	<0.5	<0.5
	8/1/2006	<10	<0.5	<0.5	<2.0	<1000	<0.5	<0.5
	10/19/2006	<10	<0.5	<0.5	<2.0	<1000	<0.5	<0.5
	1/12/2007	<2.0	<0.5	<0.5	<2.0	<1000	<0.5	<0.5
	4/17/2007	6.72	<0.5	<0.5	<2.0	<1000	<0.5	<0.5
	<b>7/17/2007</b>	<b>7.6</b>	<b>&lt;0.5</b>	<b>&lt;0.5</b>	<b>&lt;2.0</b>	<b>&lt;1000</b>	<b>&lt;0.5</b>	<b>&lt;0.5</b>

**Table 2**  
**Historical Groundwater Analytical Data**  
**Gasoline Oxygenates & Lead Scavengers**  
**3519 Castro Valley Blvd, Castro Valley, CA**

Monitoring Well	Date	TBA (µg/L)	DIPE (µg/L)	ETBE (µg/L)	TAME (µg/L)	ETHANOL (µg/L)	1,2-DCA (µg/L)	EDB (µg/L)
<b>SOMA-4</b>	8/10/2004	<10	<0.5	<0.5	<0.5	<1000	<0.5	<0.5
	10/19/2004	<10	<0.5	<0.5	<0.5	<1,000	<0.5	<0.5
	1/14/2005	<10	<0.5	<0.5	<0.5	<1,000	<0.5	<0.5
	4/14/2005	<2.5	<0.5	<0.5	<2.0	<1000	<0.5	<0.5
	7/7/2005	<10	<0.5	<0.5	<2.0	<1000	<0.5	<0.5
	11/15/2005	<10	<0.5	<0.5	<2.0	<1000	<0.5	<0.5
	2/8/2006	<10	<0.5	<0.5	<2.0	<1000	<0.5	<0.5
	4/27/2006	<10	<0.5	<0.5	<2.0	<1000	<0.5	<0.5
	8/1/2006	<10	<0.5	<0.5	<2.0	<1000	<0.5	<0.5
	10/19/2006	<10	<0.5	<0.5	<2.0	<1000	<0.5	<0.5
	1/12/2007	<2.0	<0.5	<0.5	<2.0	<1000	<0.5	<0.5
	4/17/2007	3.98	<0.5	<0.5	<2.0	<1000	<0.5	<0.5
	<b>7/17/2007</b>	<b>6.31</b>	<b>&lt;0.5</b>	<b>&lt;0.5</b>	<b>&lt;2.0</b>	<b>&lt;1000</b>	<b>&lt;0.5</b>	<b>&lt;0.5</b>

Notes:

< : Not detected above laboratory reporting limit.

NA: Not Analyzed. Due to construction activities in the Third Quarter 2003, which consisted of the replacement of the USTs and dispensers, wells ESE-1 & ESE-2 were inaccessible.

Well ESE-2 was inaccessible during the First Quarter 2007, dirt was covered over well

The Third Quarter 2003 was the first time that SOMA analyzed groundwater samples at the Site.

The Third Quarter 2004 was the first time that SOMA analyzed groundwater samples at wells SOMA-1 to SOMA-4.

Gasoline Oxygenates:

TBA: tertiary butyl alcohol

DIPE: isopropyl ether

ETBE: ethyl tertiary butyl ether

TAME: methyl tertiary amyl ether

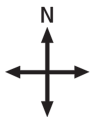
Ethanol

Lead Scavengers:

1,2-DCA: 1,2-Dichloroethane

EDB: 1,2-Dibromoethane

# Figures



approximate scale in feet

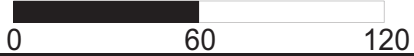


Figure 1: Site vicinity map.

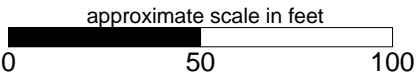
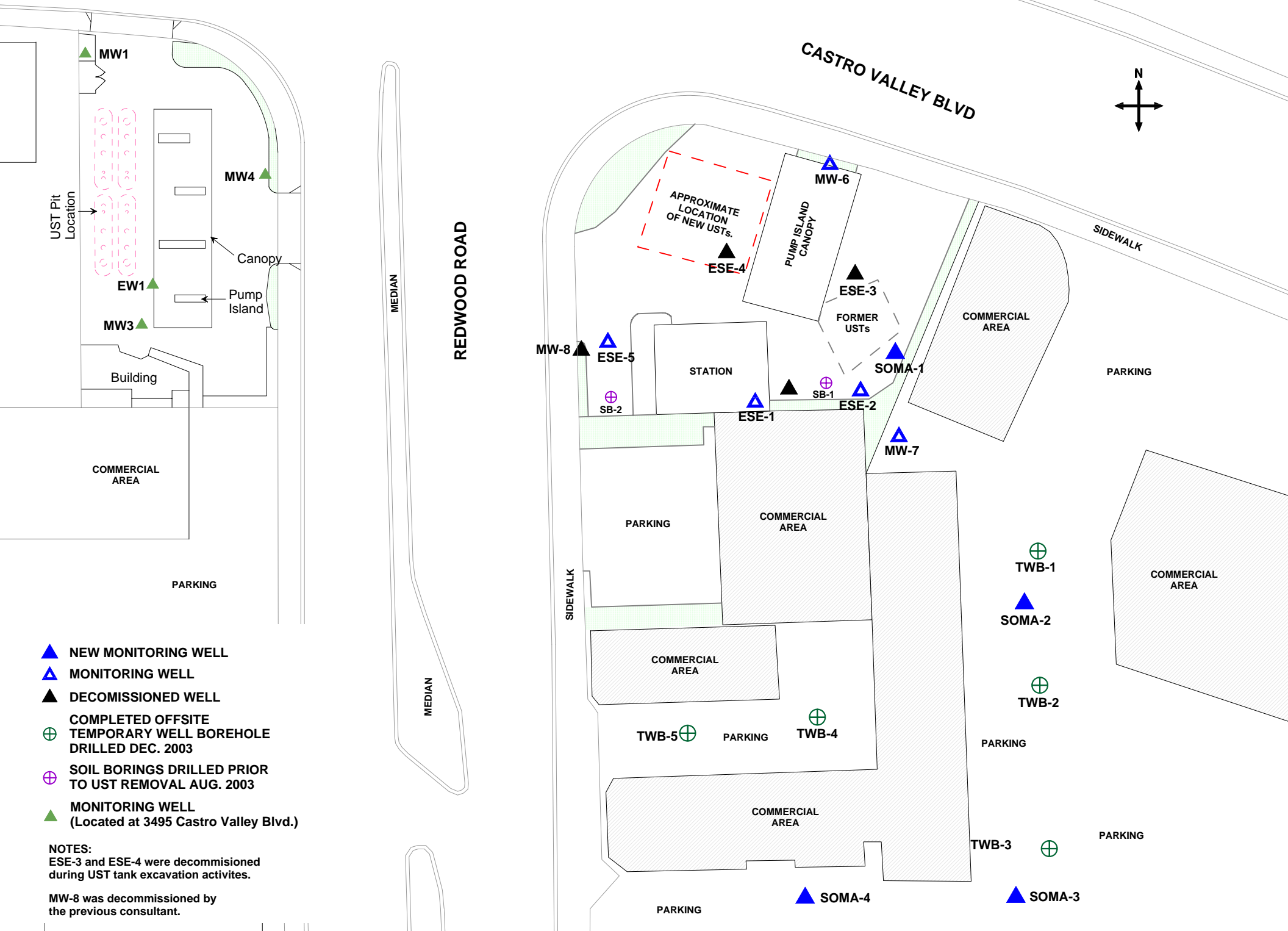


Figure 2: Site map showing locations of existing monitoring wells, decommissioned wells, offsite temporary well boreholes, and monitoring wells installed by SOMA.

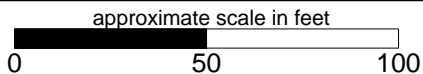
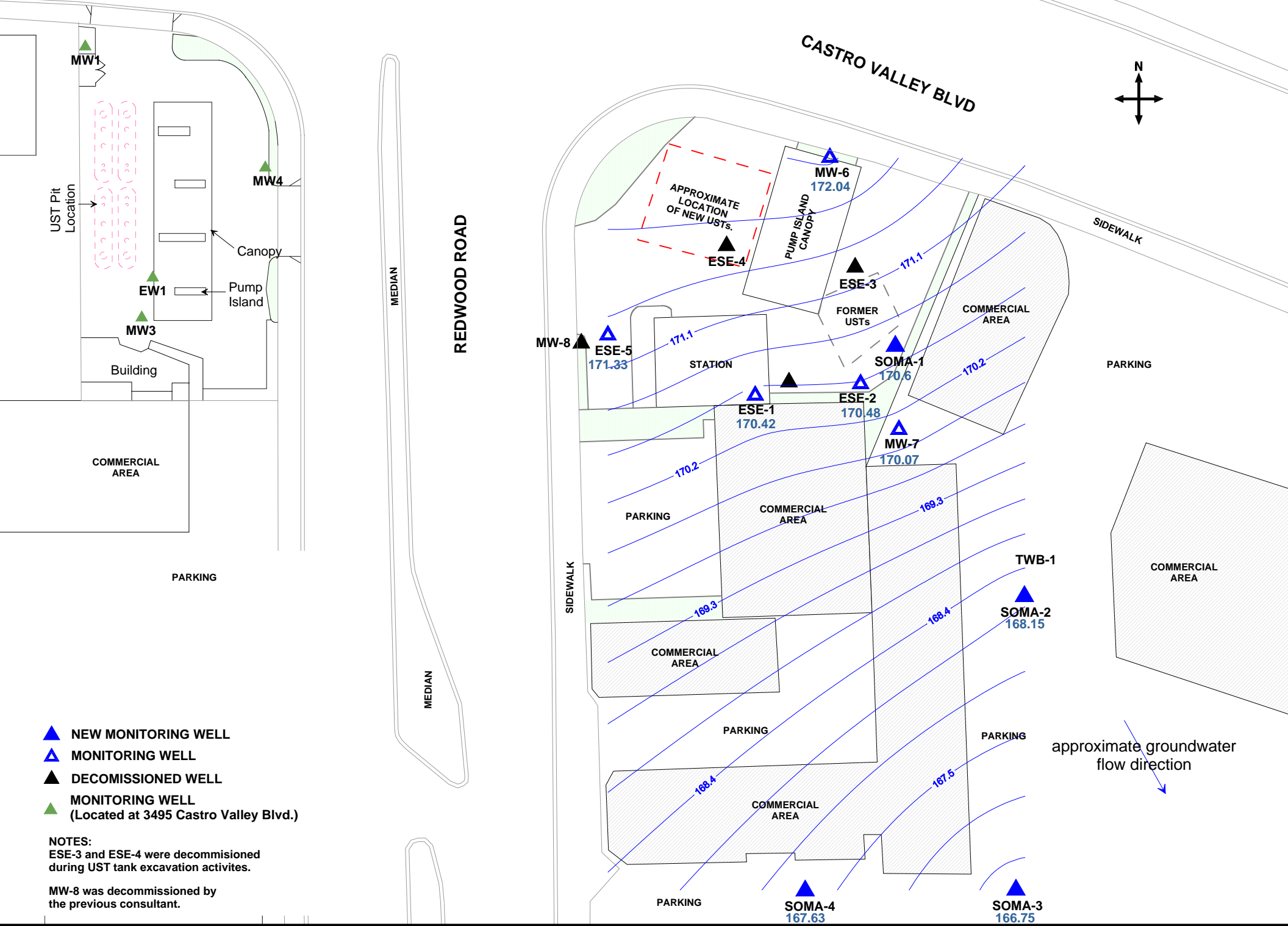
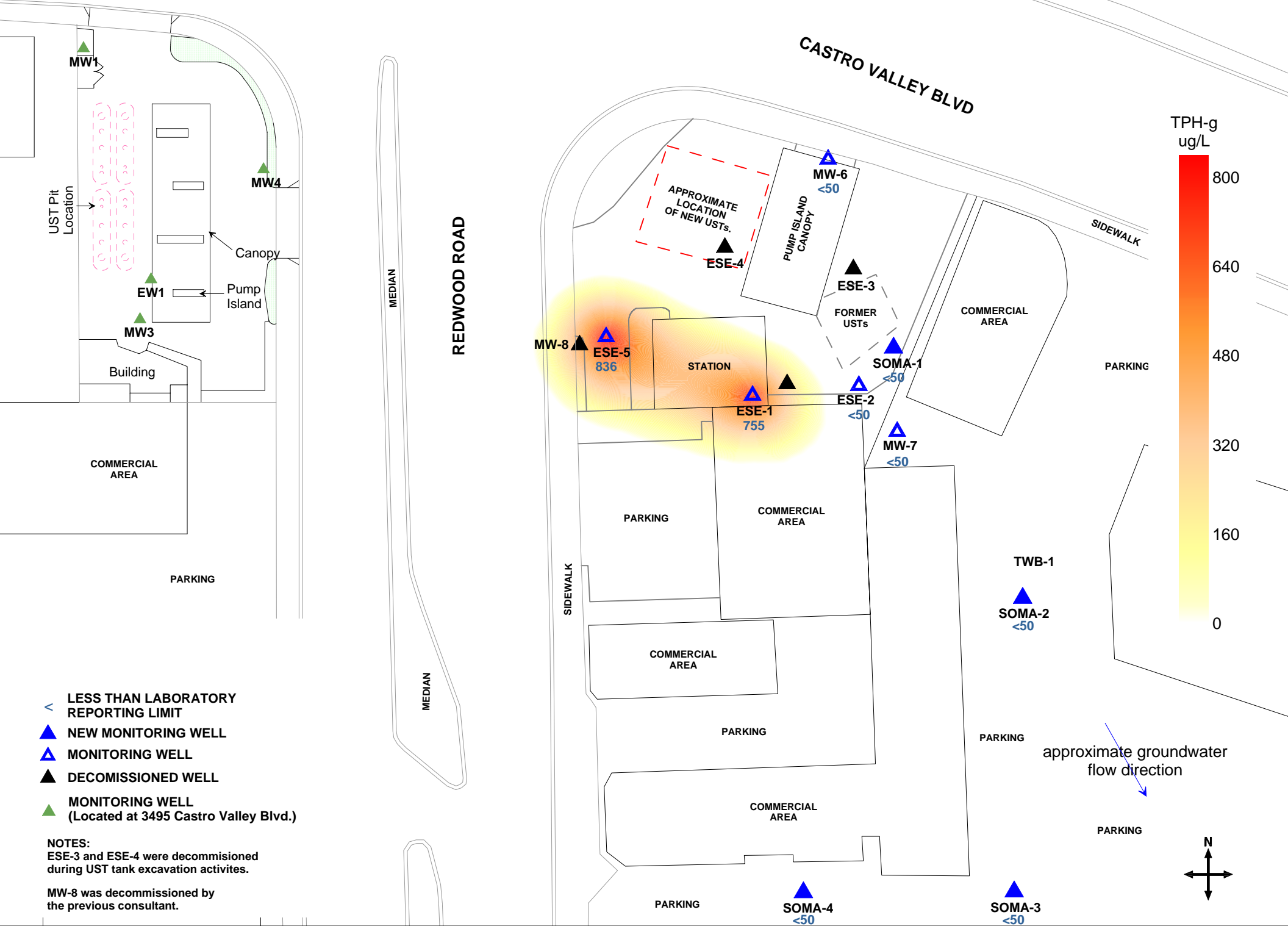


Figure 3: Groundwater elevation contour map in feet. July 17, 2007.





- < LESS THAN LABORATORY REPORTING LIMIT
- ▲ NEW MONITORING WELL
- ▲ MONITORING WELL
- ▲ DECOMMISSIONED WELL
- ▲ MONITORING WELL (Located at 3495 Castro Valley Blvd.)

NOTES:  
 ESE-3 and ESE-4 were decommissioned during UST tank excavation activities.  
 MW-8 was decommissioned by the previous consultant.

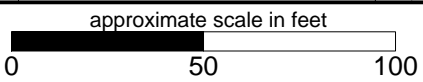


Figure 4: Contour map of TPH-g concentrations in groundwater. July 17, 2007.



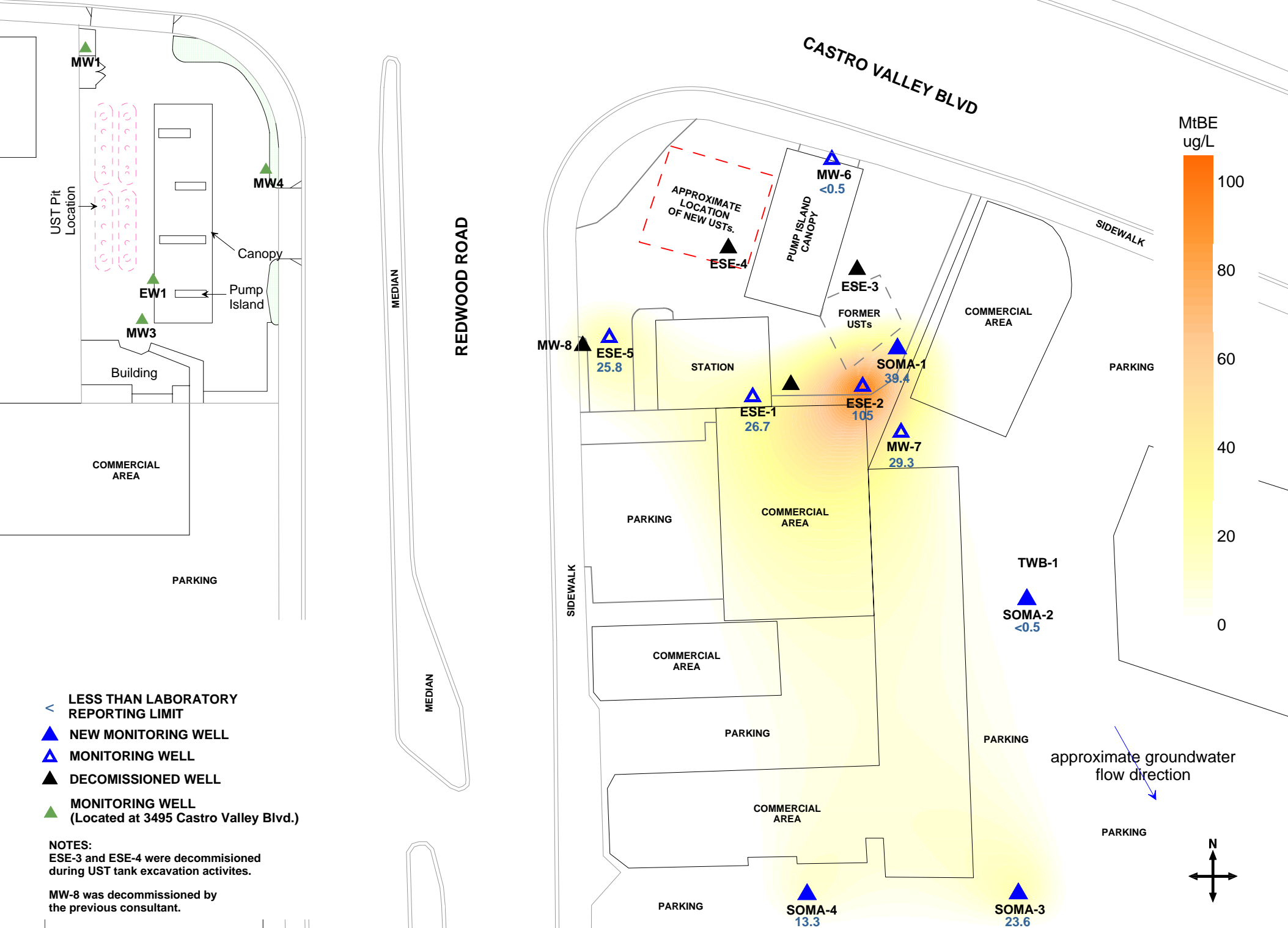


Figure 5: Contour map of MtBE concentrations in groundwater. (EPA Method 8260B). July 17, 2007.



# **APPENDIX A**

## **SOMA's Groundwater Monitoring Procedures**

## **Field Activities**

On July 17, 2007, five on-site monitoring wells (ESE-1, ESE-2, ESE-5, MW-6, and SOMA-1) and four off-site monitoring wells (MW-7, SOMA-2 to SOMA-4) were measured for depth to groundwater. On July 17, 2007, additional field measurements and grab groundwater samples were collected from all of the monitoring wells. Figure 2 illustrates well locations.

This monitoring event was conducted in accordance with procedures and guidelines of the California Regional Water Quality Control Board and Alameda County Health Care Services.

Prior to groundwater depth measurement at each well, equalization with the surrounding aquifer was achieved. The well cap was removed from each well, and the pressure in each well was then allowed to dissipate. This allowed for a more stable water table level within the well. After a few minutes, and once the water level in the well stabilized, the depth to groundwater in each monitoring well was measured from the top of the casing to the nearest 0.01 foot using an electric sounder.

The top of the casing elevation data and the depth to groundwater in each monitoring well were used to calculate the groundwater elevation. The top of casing elevation was based on an elevation datum of 56.33 feet NAVD88. Appendix B shows the survey data.

Prior to the sample collection, each well was purged using a battery operated 2-inch-diameter pump (Model ES-60 DC). In order to ensure that the final samples were in equilibrium with (and representative of) the surrounding groundwater, during purging, several samples were taken for field measurements of pH, temperature and EC. The field parameters were measured using a Hanna pH, conductivity, and temperature meter. The equipment was calibrated at the Site using standard solutions and procedures provided by the manufacturer.

Appendix B details the field measurements taken during the monitoring event.

The purging of the wells continued until the parameters for pH, temperature and EC stabilized or three casing volumes were purged. A disposable polyethylene bailer was used to collect sufficient samples from each well for laboratory analyses. The groundwater sample was transferred to three 40-mL VOA vials and preserved with hydrochloric acid. The vials were then sealed to prevent the development of air bubbles within the headspace.

After the groundwater samples were collected, they were placed into an ice-filled cooler. A chain of custody (COC) form was written for all of the samples and was submitted to the laboratory along with the groundwater samples. On July 17, 2007, SOMA's field crew delivered the groundwater samples to Pacific Analytical Laboratory in Alameda, California.

### **Laboratory Analysis**

Pacific Analytical Laboratory, a state certified laboratory, analyzed the groundwater samples for TPH-g, BTEX, MtBE, gasoline oxygenates, and lead scavengers, which were prepared using EPA Method 5030B and analyzed using Method EPA 8260B.

# **Appendix B**

Table of Elevations and Coordinates on Monitoring Wells  
Measured by Kier Wright Civil Engineers Surveyors, Inc.  
and  
Field Measurements of Physical and Chemical  
Properties of the Groundwater Samples Collected  
During the Third Quarter 2007

**TABLE OF ELEVATIONS & COORDINATES  
ON MONITORING WELLS**

SOMA ENVIRONMENTAL  
3519 CASTRO VALLEY BLVD., CASTRO VALLEY

WELL ID #	NORTHING (FT.) / LATITUDE (D.M.S.)	EASTING (FT.) / LONGITUDE (D.M.S.)	ELEVATION (FT.)	DESCRIPTION
ESE-1	2079361.15	6106465.13	180.24	2" PVC, NOTVH N. SIDE
	N 37° 41' 42.07112"	W 122° 04' 24.07899"	180.71	SET PUNCH NORTH SIDE RIM
			180.69	PAVEMENT NORTH SIDE
ESE-2	2079361.30	6106501.97	180.79	2" PVC, NOTVH N. SIDE
	N 37° 41' 42.07873"	W 122° 04' 23.62071"	181.16	SET PUNCH NORTH SIDE RIM
			181.14	CONC. NORTH SIDE
ESE-5	2079381.46	6106387.63	178.80	2" PVC, NOTVH N. SIDE
	N 37° 41' 42.25902"	W 122° 04' 25.04739"	179.07	FELT X ON NORTH SIDE RIM
			179.10	CONC. NORTH SIDE
MW-6	2079451.94	6106492.77	181.80	2" PVC, NOTVH N. SIDE
	N 37° 41' 42.97323"	W 122° 04' 23.75412"	181.97	SET PUNCH NORTH SIDE RIM
			181.88	GROUND NORTH SIDE
MW-7	2079337.18	6106516.12	179.11	2" PVC, NOTVH N. SIDE
	N 37° 41' 41.84264"	W 122° 04' 23.43963"	179.55	SET PUNCH NORTH SIDE RIM
			179.49	CONC. NORTH SIDE
SOMA-1	2079370.39	6106506.79	180.95	2" PVC, NOTVH N. SIDE
	N 37° 41' 42.16939"	W 122° 04' 23.56265"	181.25	SET PUNCH NORTH SIDE RIM
			181.22	CONC. NORTH SIDE
SOMA-2	2079297.44	6106567.02	178.99	2" PVC, NOTVH N. SIDE
	N 37° 41' 41.45825"	W 122° 04' 22.79809"	179.29	SET PUNCH NORTH SIDE RIM
			179.28	CONC. NORTH SIDE
SOMA-3	2079130.83	6106567.48	176.81	2" PVC, NOTVH N. SIDE
	N 37° 41' 39.81129"	W 122° 04' 22.75752"	177.18	SET PUNCH NORTH SIDE RIM
			177.12	PAVEMENT NORTH SIDE
SOMA-4	2079141.57	6106464.22	176.94	2" PVC, NOTVH N. SIDE
	N 37° 41' 39.9003"	W 122° 04' 24.04438"	177.43	SET PUNCH NORTH SIDE RIM
			177.44	PAVEMENT NORTH SIDE

**Kier & Wright Engineers Surveyors, Inc.**

6/21/2005  
10:19 AM  
3519 Castro Valley

1233 Quarry Lane, Suite 145, Pleasanton, CA 94566  
Phone (925) 249-6555,  
Fax (925) 249-6563



**TABLE OF ELEVATIONS & COORDINATES  
ON MONITORING WELLS**

SOMA ENVIRONMENTAL  
3519 CASTRO VALLEY BLVD., CASTRO VALLEY

**ADDITIONAL POINTS**

PT#	NORTHING (FT.)	EASTING (FT.)	ELEVATION (FT.)	DESCRIPTION
320	2079386.87	6106408.85	N/A	BL. INTX
321	2079387.18	6106455.22	N/A	BL. INTX
331	2079351.06	6106409.27	N/A	BL<
318	2079384.55	6106369.10	N/A	DWY
329	2079106.74	6106368.58	N/A	DWY
330	2079148.74	6106368.66	N/A	DWY
317	2079424.72	6106369.39	N/A	DWY E-C
315	2079481.34	6106432.38	N/A	DWY PCC
310	2079415.57	6106624.48	N/A	DWY POC
311	2079423.23	6106606.56	N/A	DWY POC
312	2079447.91	6106542.76	N/A	DWY POC
313	2079461.36	6106504.01	N/A	DWY POC
314	2079472.67	6106468.07	N/A	DWY POC
316	2079466.76	6106389.18	N/A	HCRMP POC
319	2079237.38	6106368.78	N/A	TC

**BENCH MARK:** NGS Bench mark No.PID# HT0223

THE STATION IS LOCATED IN THE CITY OF HAYWARD AT THE RAILROAD CROSSING OF THE SOUTHERN PACIFIC RAIL-ROAD AND BLOSSOM WAY, IN THE TOP OF THE NORTHWEST CURB OF BLOSSOM WAY.

TO REACH THE STATION FROM THE JUNCTION OF U S HIGHWAY 880 ON WEST A STREET, GO SOUTHEAST ON WEST A STREET FOR 0.2 MILES TO A CROSSROAD, HATHAWAY AVE ON THE LEFT, SANTA CLARA STREET ON THE RIGHT. TURN LEFT, NORTH, ON HATHAWAY AVENUE AND CONTINUE FOR 0.7 MILES TO WEST BLOSSOM WAY. TURN RIGHT, NORTH, ON WEST BLOSSOM WAY AND CONTINUE FOR 0.25 MILES TO THE STATION ON THE LEFT, JUST PAST THE RAIL-ROAD TRACKS.

THE STATION IS 48.95 M (160.6 FT) NORTHEAST OF THE NORTHEAST RAIL, 7.01 M NORTHWEST OF THE CENTER OF BLOSSOM WAY, 0.24 M (0.8 FT) NORTH OF THE NORTH CORNER OF A STEEL GRATE IN THE STREET, 5.6 M (18.5 FT) SOUTHWEST OF A POWER POLE AND 0.12 M (0.4 FT) HIGHER THAN THE STREET.

Elevation =56.33 FEET NAVD88 Datum  
ADJUSTED

**HORIZONTAL CONTROL:**

**PID - HT0223**

NORTHING =2,072,670.26 , EASTING = 6,095,650.79 FEET; EPOCH DATE = 1998.50

**PID - HT 2583**

**Kier & Wright Engineers Surveyors, Inc.**

6/21/2005  
10:19 AM  
3519 Castro Valley

1233 Quarry Lane, Suite 145, Pleasanton, CA 94566  
Phone (925) 249-6555,  
Fax (925) 249-6563

**TABLE OF ELEVATIONS & COORDINATES  
ON MONITORING WELLS**

SOMA ENVIRONMENTAL  
3519 CASTRO VALLEY BLVD., CASTRO VALLEY

NORTHING =2,082,510.30 , EASTING = 6,116,892.13 FEET; EPOCH DATE = 1991.35

Coordinate values are based on the California Coordinate System, Zone III NAD 83 Datum.



ENVIRONMENTAL ENGINEERING, INC

Well No.: ESE-1 Project No.: 2761  
 Casing Diameter: 2 inches Address: 3519 Castro Valley Blvd  
 Depth of Well: 28.00 feet Castro Valley, CA  
 Top of Casing Elevation: 180.24 feet Date: July 17, 2007  
 Depth to Groundwater: 9.82 feet Sampler: Tony Perini  
 Groundwater Elevation: 170.42 feet Lizzie Hightower  
 Water Column Height: 18.18 feet  
 Purged Volume: 12 gallons

Purging Method: Bailer  Pump   
 Sampling Method: Bailer  Pump   
 Color: No  Yes  Describe: Brown  
 Sheen: No  Yes  Describe: \_\_\_\_\_  
 Odor: No  Yes  Describe: \_\_\_\_\_

Field Measurements:

Time	Vol (gallons)	pH	Temp (°C)	E.C. (µs/cm)
156 PM	Begin	purging	well	
159 PM	3	7.31	20.00	719
202 PM	8	7.14	20.30	723
205 PM	12	7.0	19.9	742
208 PM	sampled			



ENVIRONMENTAL ENGINEERING, INC

Well No.: ESE-2  
 Casing Diameter: 2 inches  
 Depth of Well: 26.50 feet  
 Top of Casing Elevation: 180.79 feet  
 Depth to Groundwater: 10.31 feet  
 Groundwater Elevation: 170.48 feet  
 Water Column Height: 16.19 feet  
 Purged Volume: 11 gallons

Project No.: 2761  
 Address: 3519 Castro Valley Blvd  
 Castro Valley, CA  
 Date: July 17, 2007  
 Sampler: Tony Perini  
 Lizzie Hightower

Purging Method: Bailer  Pump

Sampling Method: Bailer  Pump

Color: No  Yes  Describe: \_\_\_\_\_

Sheen: No  Yes  Describe: \_\_\_\_\_

Odor: No  Yes  Describe: \_\_\_\_\_

Field Measurements:

Time	Vol (gallons)	pH	Temp (°C)	E.C. (µs/cm)
133 PM	Started			well
136 PM	3	7.28	22.20	784
139 PM	7	7.18	22.20	755
142 PM	11	7.08	19.8	706
145 PM	sampled			



ENVIRONMENTAL ENGINEERING, INC

Well No.: ESE-5  
 Casing Diameter: 2 inches  
 Depth of Well: 23.80 feet  
 Top of Casing Elevation: 178.80 feet  
 Depth to Groundwater: 7.47 feet  
 Groundwater Elevation: 171.33 feet  
 Water Column Height: 16.33 feet  
 Purged Volume: 10 gallons

Project No.: 2761  
 Address: 3519 Castro Valley Blvd  
 Castro Valley, CA  
 Date: July 17, 2007  
 Sampler: Tony Perini  
 Lizzie Hightower

Purging Method: Bailer  Pump   
 Sampling Method: Bailer  Pump   
 Color: No  Yes  Describe: \_\_\_\_\_  
 Sheen: No  Yes  Describe: \_\_\_\_\_  
 Odor: No  Yes  Describe: \_\_\_\_\_

Field Measurements:

Time	Vol (gallons)	pH	Temp (°C)	E.C. (µs/cm)
1132 Am	Begin	Purging well		
1133 Am	2	6.86	20.60	1260
1136 Am	5	7.08	21.50	828
1140 Am	10	7.16	21.50	823
1142 Am	Sampled			



ENVIRONMENTAL ENGINEERING, INC

Well No.: MU-6  
 Casing Diameter: 2 inches  
 Depth of Well: 30.00 feet  
 Top of Casing Elevation: 181.80 feet  
 Depth to Groundwater: 8.76 feet  
 Groundwater Elevation: 172.04 feet  
 Water Column Height: 20.24 feet  
 Purged Volume: 11 gallons

Project No.: 2761  
 Address: 3519 Castro Valley Blvd  
 Castro Valley, CA  
 Date: July 17, 2007  
 Sampler: Tony Perini  
 Lizzie Hightower

Purging Method: Bailer  Pump

Sampling Method: Bailer  Pump

Color: No  Yes  Describe: Cloudy

Sheen: No  Yes  Describe: \_\_\_\_\_

Odor: No  Yes  Describe: \_\_\_\_\_

Field Measurements:

Time	Vol (gallons)	pH	Temp (°C)	E.C. (µs/cm)
1259 pm	Started Purging Well			
100 pm	2	7.43	22.40	577
102 pm	5	7.46	21.60	579
105 pm	8	7.16	20.60	578
107 pm	11	7.05	19.7	575
109 pm	Sampled			



ENVIRONMENTAL ENGINEERING, INC

Well No.: MW-7  
 Casing Diameter: 2 inches  
 Depth of Well: 29.35 feet  
 Top of Casing Elevation: 179.11 feet  
 Depth to Groundwater: 9.04 feet  
 Groundwater Elevation: 170.07 feet  
 Water Column Height: 20.31 feet  
 Purged Volume: 14 gallons

Project No.: 2761  
 Address: 3519 Castro Valley Blvd  
 Castro Valley, CA  
 Date: July 17, 2007  
 Sampler: Tony Perini  
 Lizzie Hightower

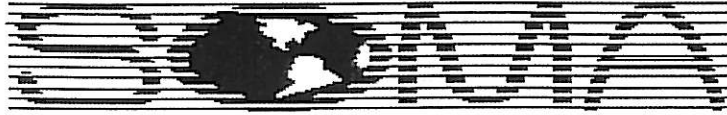
Purging Method: Bailer  Pump

Sampling Method: Bailer  Pump

Color: No  Yes  Describe: cloudy  
 Sheen: No  Yes  Describe: \_\_\_\_\_  
 Odor: No  Yes  Describe: \_\_\_\_\_

Field Measurements:

Time	Vol (gallons)	pH	Temp (°C)	E.C. (µs/cm)
1108 Am	Started purging well			
1109 Am	2	6.87	20.0	840
1111 Am	6	6.85	18.70	840
1114 Am	9	6.86	19.0	860
1118 Am	14	6.86	18.90	840
1120 Am	Sampled			



ENVIRONMENTAL ENGINEERING, INC

Well No.: SOMA-1  
 Casing Diameter: 2 inches  
 Depth of Well: 29.74 feet  
 Top of Casing Elevation: 180.95 feet  
 Depth to Groundwater: 10.35 feet  
 Groundwater Elevation: 170.60 feet  
 Water Column Height: 19.39 feet  
 Purged Volume: 10 gallons

Project No.: 2761  
 Address: 3519 Castro Valley Blvd  
 Castro Valley, CA  
 Date: July 17, 2007  
 Sampler: Tony Perini  
 Lizzie Hightower

Purging Method: Bailer  Pump   
 Sampling Method: Bailer  Pump   
 Color: No  Yes  Describe: Cloudy  
 Sheen: No  Yes  Describe: \_\_\_\_\_  
 Odor: No  Yes  Describe: \_\_\_\_\_

Field Measurements:

Time	Vol (gallons)	pH	Temp (°C)	E.C. (µs/cm)
121 PM	Started purging well			
122 PM	2	6.21	20.20	689
126 PM	6	6.87	20.00	694
129 PM	10	6.90	19.8	706
131 PM	sampled			





ENVIRONMENTAL ENGINEERING, INC

Well No.: SOMA-2  
 Casing Diameter: 2 inches  
 Depth of Well: 14.70 feet  
 Top of Casing Elevation: 178.99 feet  
 Depth to Groundwater: 10.84 feet  
 Groundwater Elevation: 168.15 feet  
 Water Column Height: 3.86 feet  
 Purged Volume: 2 gallons

Project No.: 2761  
 Address: 3519 Castro Valley Blvd  
 Castro Valley, CA  
 Date: July 17, 2007  
 Sampler: Tony Perini  
 Lizzie Hightower

Purging Method: Bailer  Pump   
 Sampling Method: Bailer  Pump

Color: No  Yes  Describe: \_\_\_\_\_  
 Sheen: No  Yes  Describe: \_\_\_\_\_  
 Odor: No  Yes  Describe: \_\_\_\_\_

Field Measurements:

Time	Vol (gallons)	pH	Temp (°C)	E.C. (µs/cm)
1047 Am	Started		Purging	well
1048 Am	2	7.45	20.0	170
1049 Am	Dried			
1051 Am	sampled			



ENVIRONMENTAL ENGINEERING, INC

Well No.: 80MA-3  
 Casing Diameter: 2 inches  
 Depth of Well: 14.70 feet  
 Top of Casing Elevation: 176.81 feet  
 Depth to Groundwater: 10.06 feet  
 Groundwater Elevation: 166.75 feet  
 Water Column Height: 4.64 feet  
 Purged Volume: 4 gallons

Project No.: 2761  
 Address: 3519 Castro Valley Blvd  
 Castro Valley, CA  
 Date: July 17, 2007  
 Sampler: Tony Perini  
 Lizzie Hightower

Purging Method: Bailer  Pump

Sampling Method: Bailer  Pump

Color: No  Yes  Describe: \_\_\_\_\_

Sheen: No  Yes  Describe: \_\_\_\_\_

Odor: No  Yes  Describe: \_\_\_\_\_

Field Measurements:

Time	Vol (gallons)	pH	Temp (°C)	E.C. (µs/cm)
10 31 AM	Begin Purging			well
10 32 AM	2	6.83	21.5	1200
10 34 AM	4	6.80	20.30	1240
10 36 AM	Sampled			



ENVIRONMENTAL ENGINEERING, INC

Well No.: SOMA-4  
 Casing Diameter: 2 inches  
 Depth of Well: 22.65 feet  
 Top of Casing Elevation: 176.94 feet  
 Depth to Groundwater: 9.31 feet  
 Groundwater Elevation: 167.63 feet  
 Water Column Height: 13.34 feet  
 Purged Volume: 9 gallons

Project No.: 2761  
 Address: 3519 Castro Valley Blvd  
 Castro Valley, CA  
 Date: July 17, 2007  
 Sampler: Tony Perini  
 Lizzie Hightower

Purging Method: Bailer  Pump   
 Sampling Method: Bailer  Pump

Color: No  Yes  Describe: \_\_\_\_\_  
 Sheen: No  Yes  Describe: \_\_\_\_\_  
 Odor: No  Yes  Describe: \_\_\_\_\_

Field Measurements:

Time	Vol (gallons)	pH	Temp (°C)	E.C. (µs/cm)
1010 AM	started purging well			
1012 AM	2	6.42	20.10	1070
1015 AM	5	6.57	20.40	1070
1018 AM	9	6.62	20.10	1050
1020 AM	sampled			

# **Appendix C**

Chain of Custody Form and Laboratory Report  
for the  
Third Quarter 2007 monitoring event



02 August 2007

Mansour Sepehr  
SOMA Environmental Engineering Inc.  
6620 Owens Drive, Suite A  
Pleasanton, CA 94588

RE: 3519 Castro Valley Blvd

Work Order Number: 7070006

This Laboratory report has been reviewed for technical correctness and completeness. This entire report was reviewed and approved by the Laboratory Director or the Director's designee, as verified by the following signature.

Sincerely,



---

Maiid Akhavan  
Laboratory Director



SOMA Environmental Engineering Inc.  
6620 Owens Drive, Suite A  
Pleasanton CA, 94588

Project: 3519 Castro Valley Blvd  
Project Number: 2761  
Project Manager: Mansour Sepehr

**Reported:**  
02-Aug-07 18:20

**ANALYTICAL REPORT FOR SAMPLES**

Sample ID	Laboratory ID	Matrix	Date Sampled	Date Received
ESE-1	7070006-01	Water	17-Jul-07 14:08	17-Jul-07 15:00
ESE-2	7070006-02	Water	17-Jul-07 13:45	17-Jul-07 15:00
ESE-5	7070006-03	Water	17-Jul-07 11:42	17-Jul-07 15:00
MW-6	7070006-04	Water	17-Jul-07 13:09	17-Jul-07 15:00
MW-7	7070006-05	Water	17-Jul-07 11:20	17-Jul-07 15:00
SOMA-1	7070006-06	Water	17-Jul-07 13:31	17-Jul-07 15:00
SOMA-2	7070006-07	Water	17-Jul-07 10:51	17-Jul-07 15:00
SOMA-3	7070006-08	Water	17-Jul-07 10:36	17-Jul-07 15:00
SOMA-4	7070006-09	Water	17-Jul-07 10:20	17-Jul-07 15:00





SOMA Environmental Engineering Inc.  
6620 Owens Drive, Suite A  
Pleasanton CA, 94588

Project: 3519 Castro Valley Blvd  
Project Number: 2761  
Project Manager: Mansour Sepehr

Reported:  
02-Aug-07 18:20

**Volatile Organic Compounds by EPA Method 8260B**  
**Pacific Analytical Laboratory**

Analyte	Result	Reporting Limit	Units	Dilution	Batch	Prepared	Analyzed	Method	Notes
<b>ESE-1 (7070006-01) Water    Sampled: 17-Jul-07 14:08    Received: 17-Jul-07 15:00</b>									
<b>Gasoline (C6-C12)</b>	<b>755</b>	50.0	ug/l	1	BG71801	17-Jul-07	18-Jul-07	EPA 8260B	
<b>Benzene</b>	<b>271</b>	0.500	"	"	"	"	"	"	
<b>Ethylbenzene</b>	<b>17.8</b>	0.500	"	"	"	"	"	"	
<b>m&amp;p-Xylene</b>	<b>13.5</b>	2.00	"	"	"	"	"	"	
<b>o-xylene</b>	<b>8.56</b>	0.500	"	"	"	"	"	"	
<b>Toluene</b>	<b>8.60</b>	2.00	"	"	"	"	"	"	
<b>MTBE</b>	<b>26.7</b>	0.500	"	"	"	"	"	"	
DIPE	ND	0.500	"	"	"	"	"	"	
ETBE	ND	0.500	"	"	"	"	"	"	
TAME	ND	2.00	"	"	"	"	"	"	
<b>TBA</b>	<b>128</b>	2.00	"	"	"	"	"	"	
1,2-dichloroethane	ND	0.500	"	"	"	"	"	"	
1,2-Dibromoethane (EDB)	ND	0.500	"	"	"	"	"	"	
Ethanol	ND	1000	"	"	"	"	"	"	
<i>Surrogate: 4-Bromofluorobenzene</i>		95.8 %		70-130	"	"	"	"	
<i>Surrogate: Dibromofluoromethane</i>		96.2 %		70-130	"	"	"	"	
<i>Surrogate: Perdeuterotoluene</i>		100 %		70-130	"	"	"	"	
<b>ESE-2 (7070006-02) Water    Sampled: 17-Jul-07 13:45    Received: 17-Jul-07 15:00</b>									
Gasoline (C6-C12)	ND	50.0	ug/l	1	BG71801	17-Jul-07	18-Jul-07	EPA 8260B	
<b>Benzene</b>	<b>1.65</b>	0.500	"	"	"	"	"	"	
Ethylbenzene	ND	0.500	"	"	"	"	"	"	
m&p-Xylene	ND	2.00	"	"	"	"	"	"	
o-xylene	ND	0.500	"	"	"	"	"	"	
Toluene	ND	2.00	"	"	"	"	"	"	
<b>MTBE</b>	<b>105</b>	0.500	"	"	"	"	"	"	
DIPE	ND	0.500	"	"	"	"	"	"	
ETBE	ND	0.500	"	"	"	"	"	"	
<b>TAME</b>	<b>2.95</b>	2.00	"	"	"	"	"	"	
<b>TBA</b>	<b>62.3</b>	2.00	"	"	"	"	"	"	
1,2-dichloroethane	ND	0.500	"	"	"	"	"	"	
1,2-Dibromoethane (EDB)	ND	0.500	"	"	"	"	"	"	
Ethanol	ND	1000	"	"	"	"	"	"	
<i>Surrogate: 4-Bromofluorobenzene</i>		82.0 %		70-130	"	"	"	"	

Pacific Analytical Laboratory

*The results in this report apply to the samples analyzed in accordance with the chain of custody document. This analytical report must be reproduced in its entirety.*





SOMA Environmental Engineering Inc.  
6620 Owens Drive, Suite A  
Pleasanton CA, 94588

Project: 3519 Castro Valley Blvd  
Project Number: 2761  
Project Manager: Mansour Sepehr

**Reported:**  
02-Aug-07 18:20

**Volatile Organic Compounds by EPA Method 8260B**

**Pacific Analytical Laboratory**

Analyte	Result	Reporting Limit	Units	Dilution	Batch	Prepared	Analyzed	Method	Notes
<b>ESE-2 (7070006-02) Water Sampled: 17-Jul-07 13:45 Received: 17-Jul-07 15:00</b>									
<i>Surrogate: Dibromofluoromethane</i>		103 %	70-130		BG71801	17-Jul-07	18-Jul-07	EPA 8260B	
<i>Surrogate: Perdeuterotoluene</i>		89.8 %	70-130		"	"	"	"	
<b>ESE-5 (7070006-03) Water Sampled: 17-Jul-07 11:42 Received: 17-Jul-07 15:00</b>									
<b>Gasoline (C6-C12)</b>	<b>836</b>	50.0	ug/l	1	BG71801	17-Jul-07	18-Jul-07	EPA 8260B	
<b>Benzene</b>	<b>3.10</b>	0.500	"	"	"	"	"	"	
<b>Ethylbenzene</b>	<b>4.91</b>	0.500	"	"	"	"	"	"	
m&p-Xylene	ND	2.00	"	"	"	"	"	"	
<b>o-xylene</b>	<b>2.35</b>	0.500	"	"	"	"	"	"	
Toluene	ND	2.00	"	"	"	"	"	"	
<b>MTBE</b>	<b>25.8</b>	0.500	"	"	"	"	"	"	
DIPE	ND	0.500	"	"	"	"	"	"	
ETBE	ND	0.500	"	"	"	"	"	"	
TAME	ND	2.00	"	"	"	"	"	"	
<b>TBA</b>	<b>15.4</b>	2.00	"	"	"	"	"	"	
1,2-dichloroethane	ND	0.500	"	"	"	"	"	"	
1,2-Dibromoethane (EDB)	ND	0.500	"	"	"	"	"	"	
Ethanol	ND	1000	"	"	"	"	"	"	
<i>Surrogate: 4-Bromofluorobenzene</i>		100 %	70-130		"	"	"	"	
<i>Surrogate: Dibromofluoromethane</i>		101 %	70-130		"	"	"	"	
<i>Surrogate: Perdeuterotoluene</i>		101 %	70-130		"	"	"	"	
<b>MW-6 (7070006-04) Water Sampled: 17-Jul-07 13:09 Received: 17-Jul-07 15:00</b>									
Gasoline (C6-C12)	ND	50.0	ug/l	1	BG71801	17-Jul-07	18-Jul-07	EPA 8260B	
Benzene	ND	0.500	"	"	"	"	"	"	
Ethylbenzene	ND	0.500	"	"	"	"	"	"	
m&p-Xylene	ND	2.00	"	"	"	"	"	"	
o-xylene	ND	0.500	"	"	"	"	"	"	
Toluene	ND	2.00	"	"	"	"	"	"	
MTBE	ND	0.500	"	"	"	"	"	"	
DIPE	ND	0.500	"	"	"	"	"	"	
ETBE	ND	0.500	"	"	"	"	"	"	
TAME	ND	2.00	"	"	"	"	"	"	
TBA	ND	2.00	"	"	"	"	"	"	
1,2-dichloroethane	ND	0.500	"	"	"	"	"	"	
1,2-Dibromoethane (EDB)	ND	0.500	"	"	"	"	"	"	
Ethanol	ND	1000	"	"	"	"	"	"	

Pacific Analytical Laboratory

*The results in this report apply to the samples analyzed in accordance with the chain of custody document. This analytical report must be reproduced in its entirety.*



SOMA Environmental Engineering Inc.  
6620 Owens Drive, Suite A  
Pleasanton CA, 94588

Project: 3519 Castro Valley Blvd  
Project Number: 2761  
Project Manager: Mansour Sepehr

Reported:  
02-Aug-07 18:20

### Volatile Organic Compounds by EPA Method 8260B

#### Pacific Analytical Laboratory

Analyte	Result	Reporting Limit	Units	Dilution	Batch	Prepared	Analyzed	Method	Notes
<b>MW-6 (7070006-04) Water</b> Sampled: 17-Jul-07 13:09 Received: 17-Jul-07 15:00									
Surrogate: 4-Bromofluorobenzene		83.4 %	70-130		BG71801	17-Jul-07	18-Jul-07	EPA 8260B	
Surrogate: Dibromofluoromethane		104 %	70-130		"	"	"	"	
Surrogate: Perdeuterotoluene		90.8 %	70-130		"	"	"	"	
<b>MW-7 (7070006-05) Water</b> Sampled: 17-Jul-07 11:20 Received: 17-Jul-07 15:00									
Gasoline (C6-C12)	ND	50.0	ug/l	1	BG71801	17-Jul-07	18-Jul-07	EPA 8260B	
<b>Benzene</b>	<b>2.07</b>	0.500	"	"	"	"	"	"	
Ethylbenzene	ND	0.500	"	"	"	"	"	"	
m&p-Xylene	ND	2.00	"	"	"	"	"	"	
o-xylene	ND	0.500	"	"	"	"	"	"	
Toluene	ND	2.00	"	"	"	"	"	"	
<b>MTBE</b>	<b>29.3</b>	0.500	"	"	"	"	"	"	
DIPE	ND	0.500	"	"	"	"	"	"	
ETBE	ND	0.500	"	"	"	"	"	"	
TAME	ND	2.00	"	"	"	"	"	"	
<b>TBA</b>	<b>13.3</b>	2.00	"	"	"	"	"	"	
1,2-dichloroethane	ND	0.500	"	"	"	"	"	"	
1,2-Dibromoethane (EDB)	ND	0.500	"	"	"	"	"	"	
Ethanol	ND	1000	"	"	"	"	"	"	
Surrogate: 4-Bromofluorobenzene		80.4 %	70-130		"	"	"	"	
Surrogate: Dibromofluoromethane		107 %	70-130		"	"	"	"	
Surrogate: Perdeuterotoluene		89.6 %	70-130		"	"	"	"	
<b>SOMA-1 (7070006-06) Water</b> Sampled: 17-Jul-07 13:31 Received: 17-Jul-07 15:00									
Gasoline (C6-C12)	ND	50.0	ug/l	1	BG71801	17-Jul-07	18-Jul-07	EPA 8260B	
<b>Benzene</b>	<b>14.8</b>	0.500	"	"	"	"	"	"	
<b>Ethylbenzene</b>	<b>4.63</b>	0.500	"	"	"	"	"	"	
m&p-Xylene	ND	2.00	"	"	"	"	"	"	
<b>o-xylene</b>	<b>3.32</b>	0.500	"	"	"	"	"	"	
Toluene	ND	2.00	"	"	"	"	"	"	
<b>MTBE</b>	<b>39.4</b>	0.500	"	"	"	"	"	"	
DIPE	ND	0.500	"	"	"	"	"	"	
ETBE	ND	0.500	"	"	"	"	"	"	
TAME	ND	2.00	"	"	"	"	"	"	
<b>TBA</b>	<b>555</b>	2.00	"	"	"	"	"	"	
1,2-dichloroethane	ND	0.500	"	"	"	"	"	"	
1,2-Dibromoethane (EDB)	ND	0.500	"	"	"	"	"	"	

Pacific Analytical Laboratory

The results in this report apply to the samples analyzed in accordance with the chain of custody document. This analytical report must be reproduced in its entirety.



SOMA Environmental Engineering Inc.  
6620 Owens Drive, Suite A  
Pleasanton CA, 94588

Project: 3519 Castro Valley Blvd  
Project Number: 2761  
Project Manager: Mansour Sepehr

Reported:  
02-Aug-07 18:20

**Volatile Organic Compounds by EPA Method 8260B**

**Pacific Analytical Laboratory**

Analyte	Result	Reporting Limit	Units	Dilution	Batch	Prepared	Analyzed	Method	Notes
<b>SOMA-1 (7070006-06) Water</b> Sampled: 17-Jul-07 13:31 Received: 17-Jul-07 15:00									
Ethanol	ND	1000	ug/l	1	BG71801	17-Jul-07	18-Jul-07	EPA 8260B	
<i>Surrogate: 4-Bromofluorobenzene</i>		86.2 %	70-130		"	"	"	"	
<i>Surrogate: Dibromofluoromethane</i>		109 %	70-130		"	"	"	"	
<i>Surrogate: Perdeuterotoluene</i>		88.4 %	70-130		"	"	"	"	
<b>SOMA-2 (7070006-07) Water</b> Sampled: 17-Jul-07 10:51 Received: 17-Jul-07 15:00									
Gasoline (C6-C12)	ND	50.0	ug/l	1	BG71801	17-Jul-07	18-Jul-07	EPA 8260B	
Benzene	ND	0.500	"	"	"	"	"	"	
Ethylbenzene	ND	0.500	"	"	"	"	"	"	
m&p-Xylene	ND	2.00	"	"	"	"	"	"	
o-xylene	ND	0.500	"	"	"	"	"	"	
Toluene	ND	2.00	"	"	"	"	"	"	
MTBE	ND	0.500	"	"	"	"	"	"	
DIPE	ND	0.500	"	"	"	"	"	"	
ETBE	ND	0.500	"	"	"	"	"	"	
TAME	ND	2.00	"	"	"	"	"	"	
<b>TBA</b>	<b>2.58</b>	2.00	"	"	"	"	"	"	
1,2-dichloroethane	ND	0.500	"	"	"	"	"	"	
1,2-Dibromoethane (EDB)	ND	0.500	"	"	"	"	"	"	
Ethanol	ND	1000	"	"	"	"	"	"	
<i>Surrogate: 4-Bromofluorobenzene</i>		80.4 %	70-130		"	"	"	"	
<i>Surrogate: Dibromofluoromethane</i>		108 %	70-130		"	"	"	"	
<i>Surrogate: Perdeuterotoluene</i>		90.6 %	70-130		"	"	"	"	
<b>SOMA-3 (7070006-08) Water</b> Sampled: 17-Jul-07 10:36 Received: 17-Jul-07 15:00									
Gasoline (C6-C12)	ND	50.0	ug/l	1	BG71801	17-Jul-07	18-Jul-07	EPA 8260B	
Benzene	ND	0.500	"	"	"	"	"	"	
Ethylbenzene	ND	0.500	"	"	"	"	"	"	
m&p-Xylene	ND	2.00	"	"	"	"	"	"	
o-xylene	ND	0.500	"	"	"	"	"	"	
Toluene	ND	2.00	"	"	"	"	"	"	
<b>MTBE</b>	<b>23.6</b>	0.500	"	"	"	"	"	"	
DIPE	ND	0.500	"	"	"	"	"	"	
ETBE	ND	0.500	"	"	"	"	"	"	
TAME	ND	2.00	"	"	"	"	"	"	
<b>TBA</b>	<b>7.60</b>	2.00	"	"	"	"	"	"	
1,2-dichloroethane	ND	0.500	"	"	"	"	"	"	

Pacific Analytical Laboratory

The results in this report apply to the samples analyzed in accordance with the chain of custody document. This analytical report must be reproduced in its entirety.



SOMA Environmental Engineering Inc.  
6620 Owens Drive, Suite A  
Pleasanton CA, 94588

Project: 3519 Castro Valley Blvd  
Project Number: 2761  
Project Manager: Mansour Sepehr

**Reported:**  
02-Aug-07 18:20

**Volatile Organic Compounds by EPA Method 8260B**

**Pacific Analytical Laboratory**

Analyte	Result	Reporting Limit	Units	Dilution	Batch	Prepared	Analyzed	Method	Notes
<b>SOMA-3 (7070006-08) Water</b> Sampled: 17-Jul-07 10:36 Received: 17-Jul-07 15:00									
1,2-Dibromoethane (EDB)	ND	0.500	ug/l	1	BG71801	17-Jul-07	18-Jul-07	EPA 8260B	
Ethanol	ND	1000	"	"	"	"	"	"	
<i>Surrogate: 4-Bromofluorobenzene</i>		80.4 %	70-130		"	"	"	"	
<i>Surrogate: Dibromofluoromethane</i>		108 %	70-130		"	"	"	"	
<i>Surrogate: Perdeuterotoluene</i>		89.4 %	70-130		"	"	"	"	
<b>SOMA-4 (7070006-09) Water</b> Sampled: 17-Jul-07 10:20 Received: 17-Jul-07 15:00									
Gasoline (C6-C12)	ND	50.0	ug/l	1	BG71801	17-Jul-07	18-Jul-07	EPA 8260B	
Benzene	ND	0.500	"	"	"	"	"	"	
<b>Ethylbenzene</b>	<b>4.47</b>	0.500	"	"	"	"	"	"	
m&p-Xylene	ND	2.00	"	"	"	"	"	"	
o-xylene	ND	0.500	"	"	"	"	"	"	
Toluene	ND	2.00	"	"	"	"	"	"	
<b>MTBE</b>	<b>13.3</b>	0.500	"	"	"	"	"	"	
DIPE	ND	0.500	"	"	"	"	"	"	
ETBE	ND	0.500	"	"	"	"	"	"	
TAME	ND	2.00	"	"	"	"	"	"	
<b>TBA</b>	<b>6.31</b>	2.00	"	"	"	"	"	"	
1,2-dichloroethane	ND	0.500	"	"	"	"	"	"	
1,2-Dibromoethane (EDB)	ND	0.500	"	"	"	"	"	"	
Ethanol	ND	1000	"	"	"	"	"	"	
<i>Surrogate: 4-Bromofluorobenzene</i>		83.2 %	70-130		"	"	"	"	
<i>Surrogate: Dibromofluoromethane</i>		110 %	70-130		"	"	"	"	
<i>Surrogate: Perdeuterotoluene</i>		93.0 %	70-130		"	"	"	"	



SOMA Environmental Engineering Inc.  
6620 Owens Drive, Suite A  
Pleasanton CA, 94588

Project: 3519 Castro Valley Blvd  
Project Number: 2761  
Project Manager: Mansour Sepehr

Reported:  
02-Aug-07 18:20

**Volatile Organic Compounds by EPA Method 8260B - Quality Control**

**Pacific Analytical Laboratory**

Analyte	Result	Reporting Limit	Units	Spike Level	Source Result	%REC	%REC Limits	RPD	RPD Limit	Notes
---------	--------	-----------------	-------	-------------	---------------	------	-------------	-----	-----------	-------

**Batch BG71801 - EPA 5030 Water MS**

**Blank (BG71801-BLK1)**

Prepared & Analyzed: 18-Jul-07

Surrogate: 4-Bromofluorobenzene	40.7		ug/l	50.0		81.4	70-130			
Surrogate: Dibromofluoromethane	51.2		"	50.0		102	70-130			
Surrogate: Perdeuterotoluene	45.4		"	50.0		90.8	70-130			
MTBE	ND	0.500	"							
DIPE	ND	0.500	"							
ETBE	ND	0.500	"							
TAME	ND	2.00	"							
TBA	ND	2.00	"							
Gasoline (C6-C12)	ND	50.0	"							
1,2-dichloroethane	ND	0.500	"							
1,2-Dibromoethane (EDB)	ND	0.500	"							
Ethanol	ND	1000	"							
Benzene	ND	0.500	"							
Ethylbenzene	ND	0.500	"							
m&p-Xylene	ND	2.00	"							
o-xylene	ND	0.500	"							
Toluene	ND	2.00	"							

**LCS (BG71801-BS1)**

Prepared & Analyzed: 18-Jul-07

Surrogate: 4-Bromofluorobenzene	50.2		ug/l	50.0		100	70-130			
Surrogate: Dibromofluoromethane	45.8		"	50.0		91.6	70-130			
Surrogate: Perdeuterotoluene	51.4		"	50.0		103	70-130			
MTBE	88.5	0.500	"	100		88.5	70-130			
ETBE	82.9	0.500	"	100		82.9	70-130			
TAME	83.1	2.00	"	100		83.1	70-130			
Gasoline (C6-C12)	1620	50.0	"	2000		81.0	70-130			
TBA	590	2.00	"	500		118	70-130			
Ethanol	ND	1000	"				0-200			
Benzene	91.8	0.500	"	100		91.8	70-130			
Toluene	90.8	2.00	"	100		90.8	70-130			



SOMA Environmental Engineering Inc.  
 6620 Owens Drive, Suite A  
 Pleasanton CA, 94588

Project: 3519 Castro Valley Blvd  
 Project Number: 2761  
 Project Manager: Mansour Sepehr

Reported:  
 02-Aug-07 18:20

**Volatile Organic Compounds by EPA Method 8260B - Quality Control**  
**Pacific Analytical Laboratory**

Analyte	Result	Reporting Limit	Units	Spike Level	Source Result	%REC	%REC Limits	RPD	RPD Limit	Notes
---------	--------	-----------------	-------	-------------	---------------	------	-------------	-----	-----------	-------

**Batch BG71801 - EPA 5030 Water MS**

**LCS Dup (BG71801-BSD1)**

Prepared & Analyzed: 18-Jul-07

Surrogate: 4-Bromofluorobenzene	51.2		ug/l	50.0		102	70-130			
Surrogate: Dibromofluoromethane	46.5		"	50.0		93.0	70-130			
Surrogate: Perdeuterotoluene	50.9		"	50.0		102	70-130			
MTBE	95.5	0.500	"	100		95.5	70-130	7.61	20	
ETBE	95.2	0.500	"	100		95.2	70-130	13.8	20	
TAME	94.6	2.00	"	100		94.6	70-130	12.9	20	
Gasoline (C6-C12)	2070	50.0	"	2000		104	70-130	24.4	20	QR-02
TBA	534	2.00	"	500		107	70-130	9.96	20	
Ethanol	ND	1000	"				0-200		200	
Benzene	101	0.500	"	100		101	70-130	9.54	20	
Toluene	97.4	2.00	"	100		97.4	70-130	7.01	20	



SOMA Environmental Engineering Inc.  
6620 Owens Drive, Suite A  
Pleasanton CA, 94588

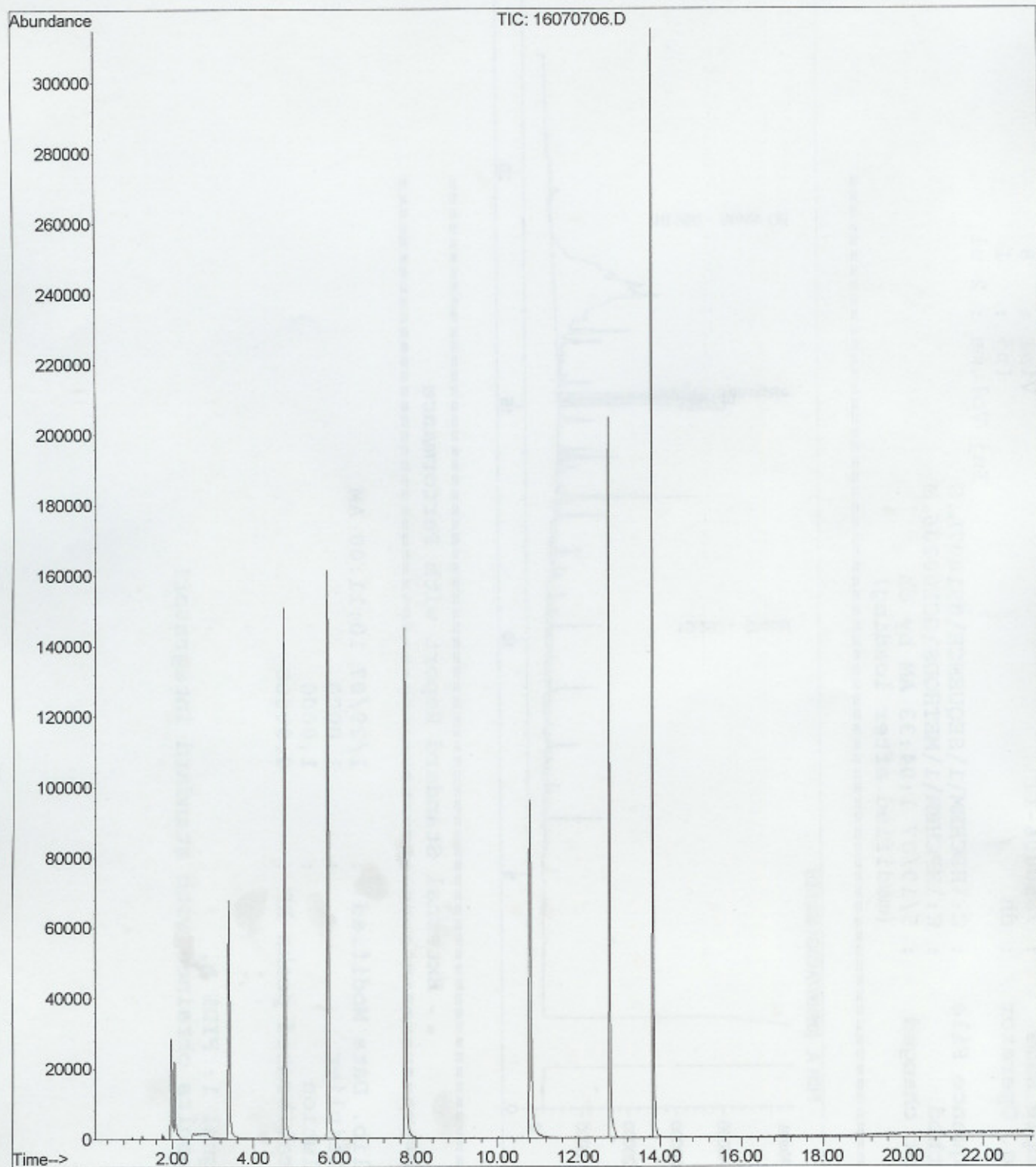
Project: 3519 Castro Valley Blvd  
Project Number: 2761  
Project Manager: Mansour Sepehr

**Reported:**  
02-Aug-07 18:20

### Notes and Definitions

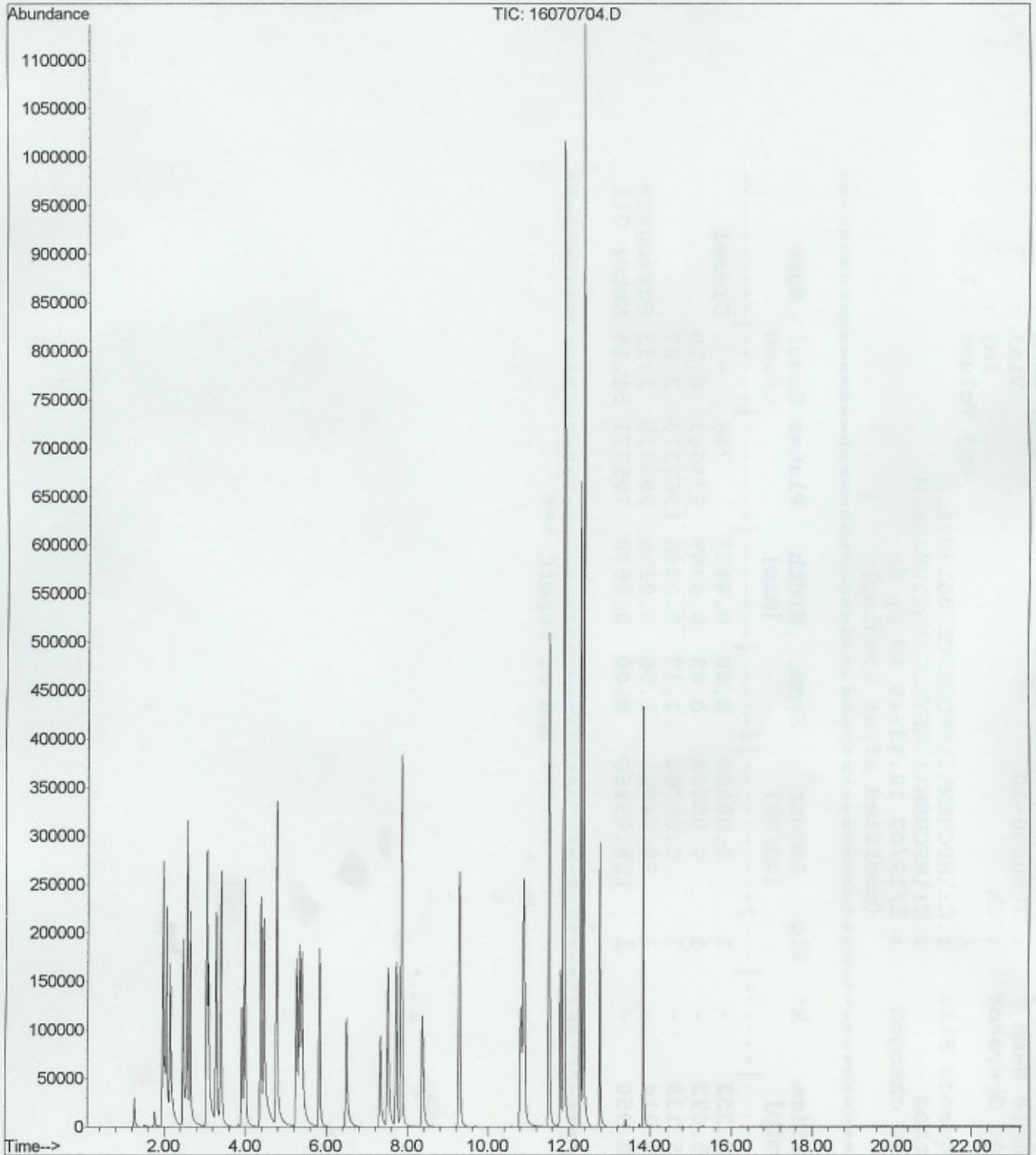
- QR-02      The RPD result exceeded the QC control limits; however, both percent recoveries were acceptable. Sample results for the QC batch were accepted based on percent recoveries and completeness of QC data.
- DET        Analyte DETECTED
- ND        Analyte NOT DETECTED at or above the reporting limit
- NR        Not Reported
- dry        Sample results reported on a dry weight basis
- RPD        Relative Percent Difference

File : C:\MSDCHEM\1\DATA\2007-Jul-16-1747.b\16070706.D  
Operator : MA  
Acquired : 16 Jul 2007 9:11 pm using AcqMethod OXY21506.M  
Instrument : PAL GCMS  
Sample Name: BG71801-BLK1  
Misc Info :  
Vial Number: 6





File :C:\MSDCHEM\1\DATA\2007-Jul-16-1747.b\16070704.D  
Operator : MA  
Acquired : 16 Jul 2007 8:05 pm using AcqMethod OXY21506.M  
Instrument : PAL GCMS  
Sample Name: BG71801-BS1@voc  
Misc Info :  
Vial Number: 4



File :C:\MSDChem\1\DATA\2007-Jul-16-1747.b\16070723.D  
Operator : MA  
Acquired : 17 Jul 2007 6:32 am using AcqMethod OXY21506.M  
Instrument : PAL GCMS  
Sample Name: BG71801-BS1@gas  
Misc Info :  
Vial Number: 23

