

RECEIVED

10:34 am, Jun 20, 2007

Alameda County
Environmental Health



ENVIRONMENTAL ENGINEERING, INC
6620 Owens Drive, Suite A • Pleasanton, CA 94588-3334
TEL (925) 734-6400 • FAX (925) 734-6401

June 15, 2007

Mr. Steven Plunkett
Alameda County Health Care Services Agency
1131 Harbor Bay Parkway, Suite 250
Alameda, California 94502-6577

Subject: **#RO0000346**

Site Address: 3519 Castro Valley Boulevard, Castro Valley, CA
Castro Valley Gasoline Service Station

Dear Mr. Plunkett:

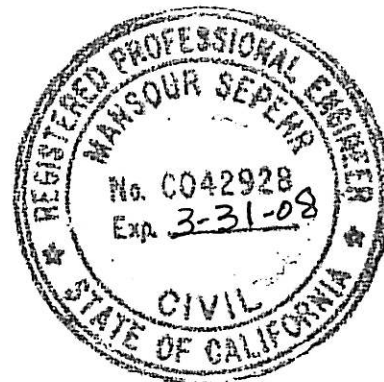
SOMA's "Second Quarter 2007 Groundwater Monitoring Report" for the subject property has been uploaded to the State's GeoTracker database and Alameda County's FTP site for your review.

Thank you for your time in reviewing our report. If you have any questions or comments, please call me at (925) 734-6400.

Sincerely,

A handwritten signature in black ink, appearing to read 'Mansour Sepehr', written over a white background.

Mansour Sepehr, Ph.D., PE
Principal Hydrogeologist



Enclosure

cc: Mr. Mirazim Shakoori w/enclosure
Mr. Matt Herrick – Broadbent & Associates, Inc. w/enclosure

Second Quarter 2007 Groundwater Monitoring Report

**Castro Valley Gasoline Service Station
3519 Castro Valley Boulevard
Castro Valley, California**

June 15, 2007

Project 2761

**Prepared for
Mr. Mirazim Shakoori
3519 Castro Valley Boulevard
Castro Valley, California 94546**



ENVIRONMENTAL ENGINEERING, INC.

6620 Owens Drive Suite A Pleasanton CA 94588 Ph: 925.734.6400 F: 925.734-6401 www.somaenv.com

CERTIFICATION

SOMA Environmental Engineering, Inc. has prepared this report on behalf of Mr. Mirazim Shakoori, property owner of 3519 Castro Valley Boulevard, Castro Valley, California to comply with requirements of the Alameda County Health Care Services for the Second Quarter 2007 joint groundwater monitoring event.



Mansour Sepehr, Ph.D., P.E.
Principal Hydrogeologist



TABLE OF CONTENTS

CERTIFICATION	i
TABLE OF CONTENTS.....	ii
LIST OF TABLES.....	iii
LIST OF FIGURES	iii
LIST OF APPENDICES	iii
1.0 INTRODUCTION	1
1.1 Previous Activities.....	1
2. RESULTS	2
2.1 Field Measurements.....	2
2.2 Laboratory Analyses	3
3. CONCLUSIONS AND RECOMMENDATIONS.....	5

LIST OF TABLES

- Table 1: Historical Groundwater Elevations and Analytical Data
TPH-g, BTEX, and MtBE
- Table 2: Historical Groundwater Analytical Data, Gasoline Oxygenates and
Lead Scavengers

LIST OF FIGURES

- Figure 1: Site vicinity map.
- Figure 2: Site map showing locations of existing monitoring wells,
decommissioned wells, offsite temporary well boreholes, and
monitoring wells installed by SOMA
- Figure 3: Groundwater elevation contour map in feet. April 17, 2007
- Figure 4: Contour map of TPH-g concentrations in groundwater
April 17, 2007
- Figure 5: Contour map of MtBE concentrations in groundwater (EPA Method
8260B). April 17, 2007
- Figure 6: Contour map of TBA concentrations in groundwater
April 17, 2007

LIST OF APPENDICES

- Appendix A: SOMA's Groundwater Monitoring Procedures
- Appendix B: Table of Elevations and Coordinates on Monitoring Wells Measured
by Kier Wright Civil Engineers Surveyors, Inc. and Field
measurements of physical and chemical properties of the
groundwater samples collected during the Second Quarter 2007
- Appendix C: Chain of Custody form and laboratory report for the Second Quarter
2007 monitoring event
- Appendix D: Non-Hazardous Waste Manifest for Groundwater Removal
- Appendix E: Groundwater Monitoring Data and Analytical Results for
neighboring Service Station at 3495 Castro Valley Blvd, Castro
Valley, CA

1.0 INTRODUCTION

SOMA Environmental Engineering, Inc. (SOMA) has prepared this report on behalf of Mr. Mirazim Shakoori, property owner of the former BP gasoline station located at 3519 Castro Valley Boulevard, Castro Valley, California (the Site, Figure 1). The Site is located in an area of primarily residential and commercial properties.

This report summarizes results of the Second Quarter 2007 joint groundwater monitoring event conducted at the Site on April 17, 2007. Included are the physical and chemical properties measured in the field for each groundwater sample, including pH, temperature, and electrical conductivity (EC). Laboratory analytical results for the groundwater samples are also included.

This monitoring event was conducted in conjunction with P&D Environmental at the neighboring station, at 3495 Castro Valley Blvd, Castro Valley. Activities were performed in accordance with the general guidelines of the California Regional Water Quality Control Board (CRWQCB) and the Alameda County Health Care Services (ACHCS). Appendix A details procedures used by SOMA during this monitoring event.

1.1 Previous Activities

1984: Three single-walled fiberglass underground storage tanks (USTs) with capacities of 6,000 gallons, 8,000 gallons, and 10,000 gallons, were installed in the southeastern portion of the Site. A former dispenser island reportedly existed on the west side of the Site; however, there was no available information on the date of the dispenser removal.

1988: A 1,000-gallon double-walled fiberglass waste oil tank (WOT) was installed to replace the previous 380-gallon WOT. In September, Kaprealian Engineering, Inc. removed the original 380-gallon WOT and observed holes in this UST. As a result, confirmation soil samples were collected from the bottom of the excavation. The following analytical soil results were observed: benzene and toluene were detected at 6.8 µg/kg and 9.5 µg/kg, respectively; total petroleum hydrocarbons (TPH) and total oil and grease (TOG) constituents were not detected.

September and October 1992: Environmental Science & Engineering, Inc. (ESE) drilled five soil boreholes and converted them into monitoring wells (ESE-1 through ESE-5). Soil and groundwater samples were collected during well installation. In the soil samples, the maximum level of soil contamination was detected in monitoring well borehole ESE-5 at 220,000 µg/kg total petroleum hydrocarbons as gasoline (TPH-g), 1,400 µg/kg benzene, 8,200 µg/kg toluene, 3,300 µg/kg ethylbenzene, and 18,000 µg/kg xylenes. In the groundwater samples collected from ESE-1, maximum concentrations were TPH-g at 2,300

µg/L, benzene at 370 µg/L, toluene at 160 µg/L, ethylbenzene at 17 µg/L, and xylenes at 110 µg/L. Figure 2 shows well locations.

July 1995: Three additional monitoring wells were installed (two on-site wells, MW-6 and MW-8, and one off-site well, MW-7: Figure 2).

April 1996: Well MW-8, located on the western margin of the Site, was decommissioned to accommodate the road-widening project along Redwood Boulevard (Figure 2).

August 20, 2003: Prior to UST removal, SOMA oversaw drilling of two boreholes by Vironex. The boreholes were drilled in order to characterize the soil for landfill acceptance criteria. Borehole locations are shown in Figure 2.

September 2003: Three single-walled fiberglass USTs, with capacities of 6,000 gallons, 8,000 gallons, and 10,000 gallons, were removed and replaced with new double-walled fuel tanks. The new USTs consisted of double-walled fiberglass tanks with capacities of 12,000 gallons and 20,000 gallons. In addition, the dispensers, product lines, and vent lines were also removed and replaced.

Third Quarter 2003: Two monitoring wells, ESE-3 and ESE-4, were decommissioned due to construction activities. In December, SOMA oversaw drilling of off-site temporary well boreholes, drilled to determine the horizontal extent of off-site petroleum hydrocarbon contamination. Locations of the temporary boreholes are displayed in Figure 2.

June 2004: On June 10, SOMA installed on- and off-site monitoring wells at the Site. SOMA-1 was installed in the southeastern section of the Site; SOMA-2 to SOMA-4 were installed south and southeast of the Site. Figure 2 shows locations of these monitoring wells. Kier and Wright Engineers Surveyors, of Pleasanton, California, surveyed all site wells on June 21. Appendix B shows elevations and coordinates of surveyed wells.

2. RESULTS

Following are results of field measurements and laboratory analyses for the April 17, 2007 joint groundwater monitoring event.

2.1 Field Measurements

Table 1 presents calculated groundwater elevation and depth to groundwater in each monitoring well. Depths to groundwater ranged from 7.51 feet in well ESE-5 to 11.88 feet in well SOMA-2. Groundwater elevations ranged from 167.00 feet in well SOMA-3 to 171.58 feet in well MW-6. Table 1 also presents historical groundwater elevations in the monitoring wells.

Depths to groundwater at the neighboring site ranged from 7.61 feet in well MW-4 to 8.88 feet in well MW-3. Groundwater elevations ranged from 167.52 feet in well MW-3 to 169.07 feet in well MW-1. Approximately 0.19 feet of free product was detected at well MW-4.

The groundwater elevation contour map is displayed in Figure 3. Groundwater flow direction is south to southeasterly across the Site. The groundwater gradient is approximately 0.015 feet/foot. Groundwater flow direction at the neighboring site was southwesterly at a gradient of approximately 0.014 feet/foot. Based on different survey data there does not appear to be a direct groundwater flow pattern between the two sites.

Since the previous monitoring event (First Quarter 2007), the groundwater flow direction has remained southeasterly, however, the groundwater gradient slightly increased. Refer to Table 1 for detailed historical groundwater elevation trends.

2.2 Laboratory Analyses

Table 1 presents laboratory analytical results of groundwater samples for the following: TPH-g; benzene, toluene, ethylbenzene, total xylenes (BTEX); and methyl tertiary-butyl ether (MtBE). Table 2 presents results of the gasoline oxygenate and lead scavenger laboratory analyses of groundwater samples.

TPH-g was below the laboratory-reporting limit in the groundwater samples collected throughout the Site except at wells ESE-1 and ESE-5. TPH-g was detected in ESE-1 and ESE-5 at 467 µg/L and 1,240 µg/L, respectively. However, TPH-g has decreased in ESE-1 since April 2006.

Figure 4 displays the contour map of TPH-g concentrations in the groundwater. As illustrated, TPH-g has only minimally impacted the Site groundwater. The highest TPH-g concentration was detected at the neighboring site well MW-3, at 92,000 µg/L.

The following Site BTEX analytes were observed during this monitoring event.

- In well ESE-2, toluene and total xylenes were below the laboratory-reporting limit, and benzene and ethylbenzene were at low levels.
- In ESE-5 and SOMA-1, toluene was below the laboratory-reporting limit.
- In MW-6 and off-site wells (MW-7, SOMA-2, and SOMA-3), all BTEX analytes were below the laboratory-reporting limit.
- In SOMA-4, benzene, toluene, and total xylenes were below the laboratory-reporting limit; ethylbenzene was detected at 4.33 µg/L.

- The highest BTEX concentrations were detected in ESE-1 at 192 µg/L, 7.59 µg/L, 13.8 µg/L, and 16.42 µg/L, respectively.

Due to low or non-detectable levels of benzene throughout the Site, no iso-concentration benzene figure was drawn. However, high BTEX concentrations were detected at the neighboring site.

MtBE was below the laboratory-reporting limit in Site well MW-6. Detectable MtBE concentrations ranged from 0.87 µg/L in Site well SOMA-2 to 158 µg/L in Site well ESE-2. The highest MtBE concentration was detected at the neighboring site well MW-3, at 14,000 µg/L.

Figure 5 displays the contour map of MtBE concentrations in the groundwater. The MtBE plume has migrated off-site; however, only trace concentrations were detected in the off-site wells. As illustrated in Figure 5, the highest MtBE region was south of the neighboring pump islands at well MW-3.

The following Site gasoline oxygenates and lead scavengers analytes were observed during this monitoring event.

- All isopropyl ether (DIPE), ethyl tertiary-butyl ether (ETBE), ethanol, 1,2-dichloroethane (1,2-DCA), and 1,2-dibromoethane (EDB) constituents were below the laboratory-reporting limit in all groundwater samples collected during this monitoring event.
- Tertiary-amyl methyl ether (TAME) was detected at 3.85 µg/L in ESE-2; and below the laboratory-reporting limit in the remaining groundwater samples.
- Tertiary-butyl alcohol (TBA) was the most dominant gasoline oxygenate analyte detected during this monitoring event. TBA was below the laboratory-reporting limit in well MW-6. Detectable TBA concentrations ranged from 3.98 µg/L in SOMA-4 to 148 µg/L in SOMA-1.

Figure 6 displays the contour map of TBA concentrations in the groundwater. The highest TBA concentration was detected at the neighboring site well EW-1, which is in the vicinity of the pump islands.

Refer to Tables 1 and 2 for detailed historical concentration trends. Appendix C includes the laboratory report and chain of custody form for the Second Quarter 2007 monitoring event at the Site.

A copy of the non-hazardous waste manifest for the groundwater removal is shown in Appendix D. Appendix E shows the laboratory data and groundwater elevations measured during the Second Quarter 2007.

3. CONCLUSIONS AND RECOMMENDATIONS

Findings of the Second Quarter 2007 joint groundwater monitoring event, the first joint monitoring event at the Site, are summarized as follows:

- The groundwater flow direction at the Site has remained south to southeasterly across the Site. Groundwater flow direction at the neighboring site was southwesterly.
- TBA is formed in the environment through oxidation of MtBE in the atmosphere followed by hydrolysis or through microbial oxidation of MtBE in impacted aquifer materials. In general, both the MtBE and TBA plumes appear to be centrally located in the southeastern section of the Site. This can be attributed to the south to southeasterly groundwater flow direction across the Site from the former UST cavity.
- Due to its high mobility, MtBE has migrated off-site. However, in the northern section of the Site, at well MW-6, all tested constituents were at non-detectable levels.
- TPH-g has remained at a low level in the western section of the Site, in well ESE-5 where there was once a source area; the other tested constituents—BTEX, MtBE, and gasoline oxygenates—were at low or non-detectable levels.
- In general, the highest concentrations during this monitoring event were detected in the neighboring site wells EW-1 and MW-3.

SOMA recommends the following action item:

- No further action (NFA) status be adopted by the ACHCS for the Site at 3519 Castro Valley Blvd, based on the continued low to non-detectable concentration levels.

The next joint monitoring event for the Site and neighboring site is scheduled for July 17, 2007.

Tables

Table 1
Historical Groundwater Elevations & Analytical Data
TPH-g, BTEX, MtBE
3519 Castro Valley Blvd, Castro Valley, CA

Monitoring Well	Date	Top of casing elevation ¹ (feet)	Depth to Groundwater (feet)	Groundwater Elevation (feet)	TPH-g (µg/L)	Benzene (µg/L)	Toluene (µg/L)	Ethyl benzene (µg/L)	Total Xylenes (µg/L)	MtBE (µg/L) 8260B
ESE-1	10/5/1992	177.69	11.22	166.47	2100	370	150	17	110	NA
	10/5/1992	177.69	NM	NM	2300	370	160	16	110	NA
	4/1/1993	177.69	8.79	168.90	5900	1500	410	110	390	NA
	6/29/1993	177.69	10.34	167.35	7600	2900	390	130	460	NA
	9/23/1993	177.69	10.91	166.78	2000	490	40	20	56	600
	9/23/1993	177.69	NM	NM	1500	420	39	19	56	550
	12/10/1993	177.69	9.93	167.76	1800	480	42	19	66	921
	12/10/1993	177.69	NM	NM	1500	380	38	17	55	770
	2/17/1994	177.69	9.64	168.05	1900	380	48	24	80	585
	2/17/1994	177.69	NM	NM	2200	430	42	19	65	491
	8/8/1994	177.69	11.72	165.97	2100	450	46	16	50	760
	10/12/1994	177.69	10.48	167.21	760	240	16	51	39	230
	1/19/1995	177.69	7.77	169.92	840	600	120	22	58	NA
	5/2/1995	177.69	8.69	169.00	2000	640	67	24	98	NA
	7/28/1995	177.69	10.12	167.57	190	<0.50	<0.50	<0.50	<1.0	NA
	11/17/1995	177.69	10.57	167.12	200	3.4	<1.0	1	<2.0	600
	2/7/1996	177.69	7.41	170.28	750	370	23	21	64	680
	4/23/1996	177.69	9.12	168.57	310	100	<1.0	<1.0	<1.0	1500
	7/9/1996	177.69	10.12	167.57	730	230	74	13	63	750
	10/10/1996	177.69	10.80	166.89	420	26	1.6	7.3	12	430

Table 1
Historical Groundwater Elevations & Analytical Data
TPH-g, BTEX, MtBE
3519 Castro Valley Blvd, Castro Valley, CA

Monitoring Well	Date	Top of casing elevation ¹ (feet)	Depth to Groundwater (feet)	Groundwater Elevation (feet)	TPH-g (µg/L)	Benzene (µg/L)	Toluene (µg/L)	Ethyl benzene (µg/L)	Total Xylenes (µg/L)	MtBE (µg/L) 8260B
ESE-1 cont.	1/20/1997	177.69	10.52	167.17	660	290	4.2	13	36	450
	4/25/1997	177.69	9.77	167.92	410	<0.5	<1.0	<1.0	<1.0	580
	7/18/1997	177.69	10.55	167.14	420	<0.5	<1.0	<1.0	<1.0	370
	10/27/1997	177.69	10.36	167.33	300	56	<1.0	6.5	<1.0	220
	1/22/1998	177.69	7.52	170.17	4200	440	9	15	17.7	1300
	4/23/1998	177.69	8.80	168.89	15000	3400	190	910	900	4900
	4/23/1998	177.69	NM	NM	15000	2800	140	730	730	4400
	7/29/1998	177.69	9.73	167.96	NA	NA	NA	NA	NA	NA
	7/30/1998	177.69	NM	NM	15000	<2.5	<5.0	<5.0	<5.0	15000
	12/17/1998	177.69	9.51	168.18	2400	73	1	2.8	4.6	2000
	3/19/1999	177.69	8.65	169.04	4700	58	<1.0	<1.0	<1.0	4700
	6/23/1999	177.69	10.51	167.18	600	170	<1.0	7.2	5	3900
	9/27/1999	177.69	10.32	167.37	920	200	<25	<25	<25	4900
	12/9/1999	177.69	10.24	167.45	460	130	1.2	5.2	1.5	5100
	3/9/2000	177.69	7.72	169.97	3000	1300	120	80	140	7300
	6/8/2000	177.69	9.40	168.29	2900	540	9.7	20	17	5200
	9/18/2000	177.69	10.05	167.64	890	3.4	<0.5	1.4	<0.5	2800
	12/14/2000	177.69	8.20	169.49	1600	11.1	<0.5	<0.5	<0.5	2730
	3/21/2001	177.69	9.75	167.94	5700	2.28	<0.5	0.51	<1.5	6810
	6/18/2001	177.69	10.21	167.48	2000	152	0.669	3.62	2.34	1980
	9/18/2001	177.69	10.30	167.39	2500	57.1	<5.0	6.25	<15	2090
	12/13/2001	177.69	9.82	167.87	2800	208	6.05	8.54	9.66	2030
	3/14/2002	177.69	9.10	168.59	1800	140	6.31	4.5	9.41	1970
	6/19/2002	177.69	9.92	167.77	1100	220	2.02	4.23	3.8	1280
	9/10/2002	177.69	10.21	167.48	490	39	2.9	<2.0	4.9	670
	12/16/2002	177.69	8.56	169.13	730	140	6	3.2	9.1	670

Table 1
Historical Groundwater Elevations & Analytical Data
TPH-g, BTEX, MtBE
3519 Castro Valley Blvd, Castro Valley, CA

Monitoring Well	Date	Top of casing elevation ¹ (feet)	Depth to Groundwater (feet)	Groundwater Elevation (feet)	TPH-g (µg/L)	Benzene (µg/L)	Toluene (µg/L)	Ethyl benzene (µg/L)	Total Xylenes (µg/L)	MtBE (µg/L) 8260B
ESE-1 cont.	3/11/2003	177.69	9.40	168.29	1700	490	21	22	41	530
	6/17/2003	177.69	9.86	167.83	1300	140	<10	<10	<10	480
	12/9/2003	177.69	9.32	168.37	1400	390	12	14	26.1	260
	2/26/2004	177.69	7.71	169.98	3200	880	50	44	89	200
	5/21/2004	177.69	10.19	167.50	1500	370	10	14	25.2	140
	8/10/2004	180.24	10.41	169.83	460	390	7	8.1	15.4	110
	10/19/2004	180.24	10.40	169.84	1600	490	13	12	25.3	110
	1/14/2005	180.24	8.26	171.98	790 Z	420	26	19	52	91
	4/14/2005	180.24	8.77	171.47	3020	766	25.6	21.3	25.26	88.2
	7/7/2005	180.24	9.94	170.30	1940	440	15.5	15.7	21	80.6
	11/15/2005	180.24	10.21	170.03	1260	259	6.2	8.2	10.81	45.8
	2/8/2006	180.24	9.01	171.23	1430	332	13.6	18.1	25.03	43
	4/27/2006	180.24	9.14	171.10	1,600	519	23.2	32.4	40.20	63.4
	8/1/2006	180.24	9.92	170.32	1,530	395	11.8	25.4	28.01	40
	10/19/2006	180.24	10.34	169.90	1,230	327	10.2	21.6	21.19	29.6
1/12/2007	180.24	9.84	170.40	561	153	7.18	14.4	14.95	30.9	
4/17/2007	180.24	9.78	170.46	467	192	7.59	13.8	16.42	30.4	
ESE-2	10/5/1992	178.23	11.68	166.55	300	5.4	16	3.9	45	NA
	4/1/1993	178.23	9.17	169.06	240	27	<0.5	17	2.6	123
	6/29/1993	178.23	10.88	167.35	1700	260	24	110	23	NA
	6/29/1993	178.23	NM	NM	1300	240	17	110	25	NA
	9/23/1993	178.23	11.56	166.67	240	3.1	0.5	0.6	2.5	643
	12/10/1993	178.23	10.48	167.75	250	2.4	2.4	1.5	11	940
	2/17/1994	178.23	10.06	168.17	900	<0.5	<0.5	<0.5	<0.5	930
	8/8/1994	178.23	11.11	167.12	750	<0.5	<0.5	<0.5	<0.5	1400
	10/12/1994	178.23	11.31	166.92	1700	<0.5	<0.5	<0.5	<0.5	3000

Table 1
Historical Groundwater Elevations & Analytical Data
TPH-g, BTEX, MtBE
3519 Castro Valley Blvd, Castro Valley, CA

Monitoring Well	Date	Top of casing elevation ¹ (feet)	Depth to Groundwater (feet)	Groundwater Elevation (feet)	TPH-g (µg/L)	Benzene (µg/L)	Toluene (µg/L)	Ethyl benzene (µg/L)	Total Xylenes (µg/L)	MtBE (µg/L) 8260B
ESE-2 cont	1/19/1995	178.23	8.25	169.98	300	2	0.9	0.7	1	NA
	5/2/1995	178.23	9.21	169.02	1200	4	<2.5	<2.5	<5	NA
	7/28/1995	178.23	10.64	167.59	2000	<2.5	<2.5	<2.5	<5	NA
	11/17/1995	178.23	11.13	167.10	3600	<25	<25	<25	<50	12000
	11/17/1995	178.23	NM	NM	3400	<25	<25	<25	<50	12000
	2/7/1996	178.23	7.94	170.29	450	<0.5	<1	<1	<1	2300
	4/23/1996	178.23	9.73	168.50	260	0.9	<1	<1	<1	8600
	7/9/1996	178.23	10.70	167.53	780	<2.5	<5	<5	<5	13393
	10/10/1996	178.23	11.39	166.84	2900	<0.5	<1	<1	<1	12000
	1/20/1997	178.23	9.04	169.19	<250	<2.5	<5	<5	<5	13000
	4/25/1997	178.23	10.31	167.92	2700	<0.5	<1	<1	<1	15000
	7/18/1997	178.23	11.02	167.21	11000	<5	<10	<10	<10	11000
	10/27/1997	178.23	10.93	167.30	6100	<2.5	<5.0	<5.0	<5.0	7100
	10/27/1997	178.23	NM	NM	6600	<2.5	<5.0	<5.0	<5.0	7400
	1/22/1998	178.23	7.93	170.30	13000	<0.5	<1	<1	<1	10000
	1/22/1998	178.23	NM	NM	13000	<0.5	<1	<1	<1	10000
	4/23/1998	178.23	9.34	168.89	19000	<5	<10	<10	<10	36000
	7/29/1998	178.23	10.29	167.94	NA	NA	NA	NA	NA	NA
	7/30/1998	178.23	NM	NM	19000	<5	<10	<10	<10	36000
	12/17/1998	178.23	10.20	168.03	12000	<5	<5	<5	<5	13000
	3/19/1999	178.23	9.02	169.21	18000	160	<1	<1	<1	18000
	6/23/1999	178.23	9.99	168.24	280	<1	<1	<1	<1	16000
	9/27/1999	178.23	10.69	167.54	<500	<25	<25	<25	<25	12000
	12/9/1999	178.23	11.26	166.97	<50	<0.3	<0.3	<0.3	<0.6	12000
	3/9/2000	178.23	7.95	170.28	<50	1.6	<0.5	<0.5	<0.5	7900
	6/8/2000	178.23	9.66	168.57	1600	<0.5	0.73	<0.5	2.2	9400
12/14/2000	178.23	11.15	167.08	6000	0.75	<0.5	<0.5	<0.5	11200	

Table 1
Historical Groundwater Elevations & Analytical Data
TPH-g, BTEX, MtBE
3519 Castro Valley Blvd, Castro Valley, CA

Monitoring Well	Date	Top of casing elevation ¹ (feet)	Depth to Groundwater (feet)	Groundwater Elevation (feet)	TPH-g (µg/L)	Benzene (µg/L)	Toluene (µg/L)	Ethyl benzene (µg/L)	Total Xylenes (µg/L)	MtBE (µg/L) 8260B
ESE-2 cont	3/21/2001	178.23	10.35	167.88	6900	786	45.7	37.7	71.5	3790
	6/18/2001	178.23	11.24	166.99	6400	<2.5	<2.5	<2.5	<7.5	9320
	9/18/2001	178.23	11.35	166.88	4800	<12.5	<12.5	<12.5	<37.5	6960
	12/13/2001	178.23	10.97	167.26	59000	0.592	<0.5	<0.5	<1	5940
	3/14/2002	178.23	10.13	168.10	4500	76	<0.5	<0.5	<1	6660
	6/19/2002	178.23	10.91	167.32	250	<12.5	<12.5	<12.5	<25	4900
	9/10/2002	178.23	10.82	167.41	1500	<5	<5	<5	6.3	3100
	12/16/2002	178.23	7.87	170.36	1400	<5	<5	<5	<5	2400
	3/11/2003	178.23	10.24	167.99	2800	<10	<10	<10	<10	4800
	6/17/2003	178.23	10.19	168.04	10000	<100	<100	<100	<100	4400
	12/9/2003	178.23	9.97	168.26	<50	<0.5	<0.5	<0.5	<0.5	3400
	2/26/2004	178.23	7.89	170.34	<50	<0.5	<0.5	<0.5	<0.5	3000
	5/21/2004	178.23	10.70	167.53	<50	<0.5	<0.5	<0.5	<0.5	1100
	8/10/2004	180.79	10.99	169.80	<50	<0.5	<0.5	<0.5	<0.5	550
	10/19/2004	180.79	10.46	170.33	<50	<0.5	<0.5	<0.5	<0.5	410
	1/14/2005	180.79	8.66	172.13	<50	<8.3	<8.3	<8.3	<8.3	1200
	4/14/2005	180.79	9.38	171.41	<860	<2.15	<2.15	<2.15	<4.30	1020
	7/7/2005	180.79	10.46	170.33	<860	<2.15	<8.60	<2.15	<4.30	378
	11/15/2005	180.79	10.55	170.24	<50	<0.5	<2.0	<0.5	<1.0	210
	2/8/2006	180.79	9.46	171.33	<215	<2.15	<8.6	<2.15	<4.3	419
	4/27/2006	180.79	10.67	170.12	<100	1.71	<4.0	<1.0	<2.0	432
	8/1/2006	180.79	10.29	170.50	<100	2.83	<4.0	<1.0	<2.0	222
	10/19/2006	180.79	10.65	170.14	<50	0.8	<2.0	<0.5	<1.0	221
1/12/2007	180.79	NM	NM	NA	NA	NA	NA	NA	NA	
4/17/2007	180.79	10.20	170.59	<50	3.17	<2.0	4.49	<2.0	158	

Table 1
Historical Groundwater Elevations & Analytical Data
TPH-g, BTEX, MtBE
3519 Castro Valley Blvd, Castro Valley, CA

Monitoring Well	Date	Top of casing elevation ¹ (feet)	Depth to Groundwater (feet)	Groundwater Elevation (feet)	TPH-g (µg/L)	Benzene (µg/L)	Toluene (µg/L)	Ethyl benzene (µg/L)	Total Xylenes (µg/L)	MtBE (µg/L) 8260B
ESE-3	10/5/1992	178.20	10.58	167.62	430	57	31	3.6	34	NA
	4/1/1993	178.20	8.14	170.06	2400	460	220	74	210	NA
	6/29/1993	178.20	9.72	168.48	280	56	14	15	13	NA
	9/23/1993	178.20	10.46	167.74	72	13	3.5	1.7	4.1	NA
	12/10/1993	178.20	9.30	168.90	270	71	32	6.1	33	NA
	2/17/1994	178.20	8.97	169.23	520	140	10	20	33	5.74
	8/8/1994	178.20	10.02	168.18	<50	8.8	1.6	1.6	2.3	<5.0
	10/12/1994	178.20	10.32	167.88	470	190	6.4	15	18	<5.0
	1/19/1995	178.20	7.40	170.80	330	260	27	21	20	NA
	5/2/1995	178.20	8.26	169.94	530	180	30	23	44	NA
	7/28/1995	178.20	9.54	168.66	<50	<0.50	<0.50	<0.50	<1	NA
	11/17/1995	178.20	10.04	168.16	<50	1.7	<0.50	<0.50	<1	<5.0
	2/7/1996	178.20	7.08	171.12	<50	8.6	<1	<1	<1	<10
	4/1/2396	178.20	8.79	169.41	<50	7.6	<1	<1	<1	65
	7/9/1996	178.20	10.09	168.11	<50	12	2.6	2	3.9	26
	10/10/1996	178.20	10.48	167.72	NA	NA	NA	NA	NA	NA
	10/11/1996	178.20	NM	NM	260	140	<1	<1	2.6	<10
	1/20/1997	178.20	8.65	169.55	<50	1.5	1.7	<1	<1	14
	4/25/1997	178.20	10.02	168.18	<50	<0.5	<1	<1	<1	14
	7/18/1997	178.20	10.66	167.54	10000	1400	1400	300	1280	<250
10/27/1997	178.20	9.83	168.37	<250	<2.5	<5.0	<5.0	36	<50	
1/22/1998	178.20	7.06	171.14	130	<0.5	<1.0	<1.0	<1.0	120	
4/23/1998	178.20	8.44	169.76	4800	560	<10	15	<10	4000	
7/29/1998	178.20	9.27	168.93	NA	NA	NA	NA	NA	NA	
7/30/1998	178.20	NM	NM	1800	6.2	<5.0	<5.0	<5.0	1700	
12/17/1998	178.20	9.15	169.05	600	54	<1.0	2.1	4.9	340/480	

Table 1
Historical Groundwater Elevations & Analytical Data
TPH-g, BTEX, MtBE
3519 Castro Valley Blvd, Castro Valley, CA

Monitoring Well	Date	Top of casing elevation ¹ (feet)	Depth to Groundwater (feet)	Groundwater Elevation (feet)	TPH-g (µg/L)	Benzene (µg/L)	Toluene (µg/L)	Ethyl benzene (µg/L)	Total Xylenes (µg/L)	MtBE (µg/L) 8260B
ESE-3 cont.	3/19/1999	178.20	8.14	170.06	2000	260	4.4	13	28	870
	6/23/1999	178.20	9.44	168.76	290	91	<1.0	8.3	16	240
	9/27/1999	178.20	9.69	168.51	130	35	<1.0	2.7	3.8	100
	12/9/1999	178.20	10.99	167.21	380	84	1.7	8.7	6.3	160
	3/9/2000	178.20	7.12	171.08	950	190	4.6	39	62	350
	6/8/2000	178.20	10.92	167.28	300	37	<0.5	2.3	1.3	400
	9/18/2000	178.20	11.12	167.08	920	140	1.3	15	4.8	170
	12/14/2000	178.20	9.70	168.50	320	64	<0.5	6.24	1.76	201
	3/21/2001	178.20	10.07	168.13	680	80.5	0.546	21.1	18.2	398
	6/18/2001	178.20	11.42	166.78	380	47	<0.5	3.11	<1.5	242
	9/18/2001	178.20	11.55	166.65	340	54.8	<0.5	4.36	<1.5	79.7
	12/13/2001	178.20	10.12	168.08	270	31.4	<0.5	1.31	2.24	129
	3/14/2002	178.20	9.84	168.36	670	89.8	0.769	23.4	30.4	413
	6/19/2002	178.20	10.57	167.63	130	18.6	<0.5	<0.5	<1	166
	9/10/2002	178.20	9.90	168.30	88	12	<0.5	<0.5	<0.5	93
	12/16/2002	178.20	9.23	168.97	290	55	17	3.7	14	78
	3/11/2003	178.20	9.05	169.15	100	3.4	<0.5	0.54	<0.50	140
6/17/2003	178.20	9.30	168.90	520	17	<5	5.3	<5	130	
ESE-4	10/5/1992	177.73	10.33	167.40	98	7.2	1.3	1.1	6.1	NA
	4/1/1993	177.73	7.88	169.85	550	93	20	23	33	NA
	6/29/1993	177.66	8.33	169.33	150	23	0.6	5.4	0.5	54
	9/23/1993	177.66	10.05	167.61	110	14	1.7	3.2	4.6	NA
	12/10/1993	177.66	8.95	168.71	110	21	7.2	4.2	10	28.75
	2/17/1994	177.66	8.65	169.01	210	26	1.2	4.7	11	113
	8/8/1994	177.66	9.76	167.90	76	9.6	<0.5	2	<0.5	62
	10/12/1994	177.66	9.62	168.04	<50	<0.5	<0.5	<0.5	<0.5	44

Table 1
Historical Groundwater Elevations & Analytical Data
TPH-g, BTEX, MtBE
3519 Castro Valley Blvd, Castro Valley, CA

Monitoring Well	Date	Top of casing elevation ¹ (feet)	Depth to Groundwater (feet)	Groundwater Elevation (feet)	TPH-g (µg/L)	Benzene (µg/L)	Toluene (µg/L)	Ethyl benzene (µg/L)	Total Xylenes (µg/L)	MtBE (µg/L) 8260B
ESE-4 cont.	1/19/1995	177.66	6.97	170.69	140	56	14	24	23	NA
	5/2/1995	177.66	7.85	169.81	130	21	2.8	8.6	8.2	NA
	7/28/1995	177.66	9.20	168.46	<50	<0.5	<0.5	<0.5	<1	NA
	11/17/1995	177.66	9.68	167.98	<50	<0.5	0.6	<0.5	<1	18
	2/7/1996	177.66	6.59	171.07	100	2.6	<1	1.6	4.1	42
	4/23/1996	177.66	8.30	169.36	160	37	15	16	31	43
	7/9/1996	177.66	9.21	168.45	60	17	1.5	6.8	11.6	27
	10/10/1996	177.66	9.97	167.69	NA	NA	NA	NA	NA	NA
	10/11/1996	177.66	NM	NM	<50	<0.5	<1.0	<1.0	<1.0	18
	1/20/1997	177.66	7.68	169.98	<50	<0.5	<1.0	<1.0	<1.0	130
	4/25/1997	177.66	9.15	168.51	<250	<2.5	<5.0	<5.0	<5.0	<50
	7/18/1997	177.66	9.71	167.95	<50	15	<10	<10	<10	<100
	10/27/1997	177.66	9.38	168.28	<250	<2.5	<5.0	<5.0	<5.0	<50
	1/22/1998	177.66	6.59	171.07	<50	<0.5	<1.0	<1.0	<1.0	<10
	4/23/1998	177.66	7.90	169.76	<250	<2.5	<5.0	<5.0	<5.0	<50
	7/29/1998	177.66	8.96	168.70	NA	NA	NA	NA	NA	NA
	7/30/1998	177.66	NM	NM	<50	<0.5	<1.0	<1.0	<1.0	<10
	12/17/1998	177.66	8.32	169.34	NA	NA	NA	NA	NA	NA
	3/19/1999	177.66	7.71	169.95	NA	NA	NA	NA	NA	NA
	6/23/1999	177.66	8.78	168.88	NA	NA	NA	NA	NA	NA
	9/27/1999	177.66	9.27	168.39	NA	NA	NA	NA	NA	NA
	12/9/1999	177.66	9.21	168.45	NA	NA	NA	NA	NA	NA
	3/9/2000	177.66	6.82	170.84	NA	NA	NA	NA	NA	NA
	6/8/2000	177.66	8.72	168.94	NA	NA	NA	NA	NA	NA
	9/18/2000	177.66	8.72	168.94	NA	NA	NA	NA	NA	NA
	12/14/2000	177.66	8.61	169.05	NA	NA	NA	NA	NA	NA
	3/21/2001	177.66	8.61	169.05	NA	NA	NA	NA	NA	NA
6/18/2001	177.66	9.24	168.42	NA	NA	NA	NA	NA	NA	
9/18/2001	177.66	9.35	168.31	NA	NA	NA	NA	NA	NA	
12/13/2001	177.66	8.53	169.13	NA	NA	NA	NA	NA	NA	

Table 1
Historical Groundwater Elevations & Analytical Data
TPH-g, BTEX, MtBE
3519 Castro Valley Blvd, Castro Valley, CA

Monitoring Well	Date	Top of casing elevation ¹ (feet)	Depth to Groundwater (feet)	Groundwater Elevation (feet)	TPH-g (µg/L)	Benzene (µg/L)	Toluene (µg/L)	Ethyl benzene (µg/L)	Total Xylenes (µg/L)	MtBE (µg/L) 8260B
ESE-4 cont.	3/14/2002	177.66	8.44	169.22	NA	NA	NA	NA	NA	NA
	6/19/2002	177.66	10.97	166.69	NA	NA	NA	NA	NA	NA
	9/10/2002	177.66	9.27	168.39	NA	NA	NA	NA	NA	NA
	12/16/2002	177.66	6.90	170.76	NA	NA	NA	NA	NA	NA
	3/11/2003	177.66	8.83	168.83	NA	NA	NA	NA	NA	NA
	6/17/2003	177.66	8.84	168.82	NA	NA	NA	NA	NA	NA
ESE-5	10/5/1992	176.08	9.22	166.86	1300	200	3.8	1.2	18	NA
	4/1/1993	176.08	7.02	169.06	13000	2200	26	730	1000	NA
	4/1/1993	176.08	NM	NM	13000	2500	25	740	1100	NA
	6/29/1993	176.08	10.21	165.87	7600	1500	9.3	170	100	NA
	9/23/1993	176.08	10.64	165.44	560	19	1.2	0.9	1.8	NA
	12/10/1993	176.08	9.42	166.66	1700	300	3	76	110	14.07
	2/7/1994	176.08	9.35	166.73	3500	640	7.8	90	130	45.13
	8/8/1994	176.08	8.76	167.32	2600	210	4.6	9.4	4.4	33
	8/8/1994	176.08	NM	NM	2500	230	4.6	13	4.8	32
	10/12/1994	176.08	8.95	167.13	5600	560	9.5	75	21	79.2
	10/12/1994	176.08	NM	NM	6000	550	10	78	22	77
	1/19/1995	176.08	5.40	170.68	1900	620	<5	95	15	NA
	1/19/1995	176.08	NM	NM	1600	620	<5	93	17	NA
	5/2/1995	176.08	6.48	169.60	5700	1100	<10	180	58	NA
	5/2/1995	176.08	NM	NM	5300	1100	<10	180	58	NA
	7/28/1995	176.08	7.97	168.11	520	15	<0.50	1.7	1.3	NA
7/28/1995	176.08	NM	NM	460	7.2	<0.50	1.9	1.5	NA	
11/17/1995	176.08	8.39	167.69	850	39	1.8	7.6	2.7	24	

Table 1
Historical Groundwater Elevations & Analytical Data
TPH-g, BTEX, MtBE
3519 Castro Valley Blvd, Castro Valley, CA

Monitoring Well	Date	Top of casing elevation ¹ (feet)	Depth to Groundwater (feet)	Groundwater Elevation (feet)	TPH-g (µg/L)	Benzene (µg/L)	Toluene (µg/L)	Ethyl benzene (µg/L)	Total Xylenes (µg/L)	MtBE (µg/L) 8260B
ESE-5 cont	2/7/1996	176.08	4.71	171.37	4100	670	6	190	140	<50
	4/23/1996	176.08	7.35	168.73	3000	570	<5	79	100	84
	7/9/1996	176.08	9.40	166.68	620	150	1.7	9.3	6.4	25
	10/10/1996	176.08	9.04	167.04	1100	29	<5	<5	<5	<50
	10/10/1996	176.08	NM	NM	1100	31	<5	<5	<5	<50
	1/20/1997	176.08	5.82	170.26	2100	980	<25	280	80	<250
	1/20/1997	176.08	NM	NM	2700	910	8.8	280	84	180
	4/25/1997	176.08	7.24	168.84	NA	NA	NA	NA	NA	NA
	4/28/1997	176.08	NM	NM	<250	7.9	<5.0	<5.0	<5.0	<50
	7/18/1997	176.08	7.86	168.22	1200	<5	<10	<10	<10	<100
	7/18/1997	176.08	NM	NM	630	31	<5.0	<5.0	<5.0	130
	10/27/1997	176.08	7.91	168.17	<250	5.4	<5.0	<5.0	<5.0	<50
	1/22/1998	176.08	4.64	171.44	170	7.7	<1.0	<1.0	<1.0	130
	4/23/1998	176.08	6.31	169.77	720	79	<5.0	9	<5.0	180
	7/29/1998	176.08	7.43	168.65	NA	NA	NA	NA	NA	NA
	7/30/1998	176.08	NM	NM	840	9.8	<1.0	4	<1.0	710
	12/17/1998	176.08	7.05	169.03	NA	NA	NA	NA	NA	NA
	3/19/1999	176.08	5.00	171.08	<250	<5.0	<5.0	<5.0	<5.0	<5.0
	6/23/1999	176.08	7.77	168.31	NA	NA	NA	NA	NA	NA
	9/27/1999	176.08	8.11	167.97	450	10	<5.0	6.3	<5.0	220
	12/9/1999	176.08	7.66	168.42	NA	NA	NA	NA	NA	NA
	3/9/2000	176.08	5.08	171.00	1700	170	2.5	45	6.4	140
	6/8/2000	176.08	7.36	168.72	NA	NA	NA	NA	NA	NA
9/18/2000	176.08	7.71	168.37	130	0.65	<0.50	0.71	<0.50	51	
12/14/2000	176.08	2.36	173.72	NA	NA	NA	NA	NA	NA	

Table 1
Historical Groundwater Elevations & Analytical Data
TPH-g, BTEX, MtBE
3519 Castro Valley Blvd, Castro Valley, CA

Monitoring Well	Date	Top of casing elevation ¹ (feet)	Depth to Groundwater (feet)	Groundwater Elevation (feet)	TPH-g (µg/L)	Benzene (µg/L)	Toluene (µg/L)	Ethyl benzene (µg/L)	Total Xylenes (µg/L)	MtBE (µg/L) 8260B
ESE-5 cont.	3/21/2001	176.08	7.42	168.66	1000	10.3	<2.5	11	<7.5	70.8
	6/18/2001	176.08	7.92	168.16	NA	NA	NA	NA	NA	NA
	9/18/2001	176.26	8.23	168.03	200	0.868	<0.50	0.55	<1.5	57.5
	12/13/2001	176.26	7.80	168.46	NA	NA	NA	NA	NA	NA
	3/14/2002	176.26	6.55	169.71	1300	17.1	1.35	15.4	1.42	37.4
	6/19/2002	176.26	7.83	168.43	NA	NA	NA	NA	NA	NA
	9/10/2002	176.26	8.22	168.04	680	9.9	<5.0	<5.0	<5.0	44
	12/16/2002	176.26	6.58	169.68	NA	NA	NA	NA	NA	NA
	3/11/2003	176.26	6.77	169.49	2100	14	<2.5	15	3	80
	6/17/2003	176.26	6.75	169.51	NA	NA	NA	NA	NA	NA
	9/17/2003	176.26	8.48	167.78	970	10 C	<0.5	<0.5	5.3	34
	12/9/2003	176.26	7.32	168.94	700	6.5	<0.5	3.1	2.7 C	34
	2/26/2004	176.26	5.21	171.05	2400 H	41	2.8 C	18	2.4 C	29
	5/21/2004	176.26	7.50	168.76	1500	2.6 C	<0.5	2.1 C	2.1 C	25
	8/10/2004	178.80	8.28	170.52	680	<0.5	<0.5	<0.5	<0.5	33
	10/19/2004	178.80	8.26	170.54	380	<0.5	<0.5	<0.5	1.4	39
	1/14/2005	178.80	5.16	173.64	2400	18	1.4	22	2.1	26
	4/14/2005	178.80	6.13	172.67	4800	7.75	1.26	14.3	<1.0	23.1
	7/7/2005	178.80	7.52	171.28	3240	0.78	<2.0	1.18	<1.0	36.6
	11/15/2005	178.80	7.85	170.95	1190	0.51	<2.0	<0.5	<1.0	30
	2/8/2006	178.80	5.83	172.97	2510	1.91	<2.0	2.82	<1.0	20.7
	4/27/2006	178.80	5.71	173.09	4,700	2.76	<2.0	4.77	<1.0	28.3
	8/1/2006	178.80	7.71	171.09	1,890	0.7	<2.0	0.75	<1.0	24.7
10/19/2006	178.80	8.00	170.80	474	<0.5	<2.0	3.39	<1.0	29	
1/12/2007	178.80	7.41	171.39	868	2.18	<2.0	2.66	<2.0	16.3	
4/17/2007	178.80	7.51	171.29	1,240	10.2	<2.0	10.4	2.37	17.2	

Table 1
Historical Groundwater Elevations & Analytical Data
TPH-g, BTEX, MtBE
3519 Castro Valley Blvd, Castro Valley, CA

Monitoring Well	Date	Top of casing elevation ¹ (feet)	Depth to Groundwater (feet)	Groundwater Elevation (feet)	TPH-g (µg/L)	Benzene (µg/L)	Toluene (µg/L)	Ethyl benzene (µg/L)	Total Xylenes (µg/L)	MtBE (µg/L) 8260B
MW-6	7/28/1995	179.24	10.00	169.24	<50	<0.50	<0.50	<0.50	<1.0	NA
	11/17/1995	179.24	10.44	168.80	<50	<0.50	<0.50	<0.50	<1.0	<5.0
	2/7/1996	179.24	7.68	171.56	<50	<0.5	<1.0	<1.0	<1.0	<10
	4/23/1996	179.24	9.33	169.91	<50	<0.5	<1.0	<1.0	<1.0	<10
	7/9/1996	179.24	10.10	169.14	<50	<0.5	<1.0	<1.0	<1.0	<10
	10/10/1996	179.24	11.00	168.24	<50	<0.5	<1.0	<1.0	<1.0	<10
	1/20/1997	179.24	8.70	170.54	<50	<0.5	<1.0	<1.0	<1.0	<10
	4/25/1997	179.24	10.16	169.08	<50	<0.5	<1.0	<1.0	<1.0	<10
	7/18/1997	179.24	10.66	168.58	<50	<0.5	<1.0	<1.0	<1.0	<10
	10/27/1997	179.24	10.25	168.99	<50	<0.5	<1.0	<1.0	<1.0	<10
	1/22/1998	179.24	7.76	171.48	<50	<0.5	<1.0	<1.0	<1.0	<10
	4/23/1998	179.24	9.10	170.14	<50	<0.5	<1.0	<1.0	<1.0	<10
	7/29/1998	179.24	10.40	168.84	NA	NA	NA	NA	NA	NA
	7/30/1998	179.24	NM	NM	<50	<0.5	<1.0	<1.0	<1.0	<10
	12/17/1998	179.24	9.40	169.84	NA	NA	NA	NA	NA	NA
	3/19/1999	179.24	9.10	170.14	NA	NA	NA	NA	NA	NA
	6/23/1999	179.24	9.79	169.45	NA	NA	NA	NA	NA	NA
	9/27/1999	179.24	10.10	169.14	NA	NA	NA	NA	NA	NA
	12/9/1999	179.24	9.97	169.27	NA	NA	NA	NA	NA	NA
	3/9/2000	179.24	8.56	170.68	NA	NA	NA	NA	NA	NA
	6/8/2000	179.24	9.11	170.13	NA	NA	NA	NA	NA	NA
	9/18/2000	179.24	9.77	169.47	NA	NA	NA	NA	NA	NA
	12/14/2000	179.24	9.17	170.07	NA	NA	NA	NA	NA	NA
3/21/2001	179.24	9.82	169.42	NA	NA	NA	NA	NA	NA	
6/18/2001	179.24	10.19	169.05	NA	NA	NA	NA	NA	NA	
9/18/2001	179.24	10.25	168.99	NA	NA	NA	NA	NA	NA	
12/13/2001	179.24	9.75	169.49	NA	NA	NA	NA	NA	NA	

Table 1
Historical Groundwater Elevations & Analytical Data
TPH-g, BTEX, MtBE
3519 Castro Valley Blvd, Castro Valley, CA

Monitoring Well	Date	Top of casing elevation ¹ (feet)	Depth to Groundwater (feet)	Groundwater Elevation (feet)	TPH-g (µg/L)	Benzene (µg/L)	Toluene (µg/L)	Ethyl benzene (µg/L)	Total Xylenes (µg/L)	MtBE (µg/L) 8260B
MW-6 cont.	3/14/2002	179.24	9.53	169.71	NA	NA	NA	NA	NA	NA
	6/19/2002	179.24	9.87	169.37	NA	NA	NA	NA	NA	NA
	9/10/2002	179.24	9.49	169.75	NA	NA	NA	NA	NA	NA
	12/16/2002	179.24	8.39	170.85	NA	NA	NA	NA	NA	NA
	3/11/2003	179.24	9.40	169.84	NA	NA	NA	NA	NA	NA
	6/17/2003	179.24	9.71	169.53	NA	NA	NA	NA	NA	NA
	9/17/2003	179.24	10.21	169.03	<50	<0.5	<0.5	<0.5	<0.5	<2.0
	12/9/2003	179.24	9.66	169.58	<50	<0.5	<0.5	<0.5	<0.5	<0.5
	2/26/2004	179.24	7.83	171.41	<50	<0.5	<0.5	<0.5	<0.5	<0.5
	5/21/2004	179.24	9.75	169.49	<50	<0.5	<0.5	<0.5	<0.5	<0.5
	8/10/2004	181.80	10.28	171.52	<50	<0.5	<0.5	<0.5	<0.5	<0.5
	10/19/2004	181.80	9.91	171.89	<50	<0.5	<0.5	<0.5	<0.5	<0.5
	1/14/2005	181.80	8.40	173.40	<50	0.6	<0.5	<0.5	<0.5	<0.5
	4/14/2005	181.80	9.04	172.76	<200	<0.5	<0.5	<0.5	<1.0	<0.5
	7/7/2005	181.80	9.94	171.86	<200	<0.5	<2.00	<0.5	<1.00	<0.5
	11/15/2005	181.80	9.98	171.82	<50	<0.5	<2.0	<0.5	<1.0	<0.5
	2/8/2006	181.80	9.91	171.89	<50	<0.5	<2.0	<0.5	<1.0	<0.5
	4/27/2006	181.80	9.54	172.26	<50	<0.5	<2.0	<0.5	<1.0	<0.5
	8/1/2006	181.80	9.61	172.19	<50	<0.5	<2.0	<0.5	<1.0	0.51
10/19/2006	181.80	10.23	171.57	<50	<0.5	<2.0	<0.5	<1.0	0.63	
1/12/2007	181.80	10.13	171.67	<50	<0.5	<2.0	<0.5	<2.0	<0.5	
4/17/2007	181.80	10.22	171.58	<50	<0.5	<2.0	<0.5	<2.0	<0.5	
MW-7	7/28/1995	176.55	9.25	167.30	<50	0.54	0.54	<0.50	<1.0	NA
	11/17/1995	176.55	9.73	166.82	1100	<10	<10	<10	<20	4000

Table 1
Historical Groundwater Elevations & Analytical Data
TPH-g, BTEX, MtBE
3519 Castro Valley Blvd, Castro Valley, CA

Monitoring Well	Date	Top of casing elevation ¹ (feet)	Depth to Groundwater (feet)	Groundwater Elevation (feet)	TPH-g (µg/L)	Benzene (µg/L)	Toluene (µg/L)	Ethyl benzene (µg/L)	Total Xylenes (µg/L)	MtBE (µg/L) 8260B
MW-7 cont.	2/7/1996	176.55	6.48	170.07	610	<0.50	<1.0	<1.0	<1.0	2500
	2/7/1996	176.55	NM	NM	280	<0.50	<1.0	<1.0	<1.0	2600
	4/23/1996	176.55	8.37	168.18	110	<0.50	<1.0	<1.0	<1.0	3500
	4/23/1996	176.55	NM	NM	230	<0.50	<1.0	<1.0	<1.0	3500
	7/9/1996	176.55	9.24	167.31	230	<0.50	<1.0	<1.0	<1.0	4296
	7/9/1996	176.55	NM	NM	220	<0.50	<1.0	<1.0	<1.0	4400
	10/10/1996	176.55	10.05	166.50	NA	NA	NA	NA	NA	NA
	10/11/1996	176.55	NM	NM	1600	<0.50	<1.0	<1.0	<1.0	3000
	1/20/1997	176.55	7.51	169.04	<50	0.63	<1.0	<1.0	<1.0	2600
	4/25/1997	176.55	8.79	167.76	NA	NA	NA	NA	NA	NA
	4/28/1997	176.55	NM	NM	1500	<0.50	<1.0	<1.0	<1.0	3600
	4/28/1997	176.55	NM	NM	7700	3500	<25	74	37	<250
	7/18/1997	176.55	9.50	167.05	1400	<0.50	<1.0	<1.0	<1.0	2600
	10/27/1997	176.55	9.19	167.36	420	<0.50	<1.0	<1.0	<1.0	560
	1/22/1998	176.55	6.45	170.10	3100	<0.50	<1.0	<1.0	1.4	2300
	4/23/1998	176.55	8.02	168.53	3800	<0.50	<1.0	<1.0	<1.0	3800
	7/29/1998	176.55	8.88	167.67	NA	NA	NA	NA	NA	NA
	7/30/1998	176.55	NM	NM	500	<2.5	<5.0	<5.0	<5.0	<50
	7/30/1998	176.55	NM	NM	4700	<12	<25	<25	<25	4700
	12/17/1998	176.55	8.62	167.93	NA	NA	NA	NA	NA	NA
	3/19/1999	176.55	7.52	169.03	3800	<1.0	<1.0	<1.0	<1.0	3800
	6/23/1999	176.55	9.63	166.92	NA	NA	NA	NA	NA	NA
	9/27/1999	176.55	9.39	167.16	140	<10	<10	<10	<10	3800
	12/9/1999	176.55	9.94	166.61	NA	NA	NA	NA	NA	NA
	3/9/2000	176.55	6.72	169.83	<50	<0.50	<0.50	<0.50	<0.50	1400
	6/8/2000	176.55	7.38	169.17	NA	NA	NA	NA	NA	NA
9/18/2000	176.55	9.18	167.37	190	<0.50	<0.50	<0.50	<0.50	580	
12/14/2000	176.55	8.13	168.42	NA	NA	NA	NA	NA	NA	

Table 1
Historical Groundwater Elevations & Analytical Data
TPH-g, BTEX, MtBE
3519 Castro Valley Blvd, Castro Valley, CA

Monitoring Well	Date	Top of casing elevation ¹ (feet)	Depth to Groundwater (feet)	Groundwater Elevation (feet)	TPH-g (µg/L)	Benzene (µg/L)	Toluene (µg/L)	Ethyl benzene (µg/L)	Total Xylenes (µg/L)	MtBE (µg/L) 8260B
MW-7 cont.	3/21/2001	176.55	8.98	167.57	1300	<0.50	<0.50	<0.50	<1.5	1460
	6/18/2001	176.55	9.68	166.87	NA	NA	NA	NA	NA	NA
	9/18/2001	176.55	9.80	166.75	<0.50	<0.50	<0.50	<0.50	<1.5	94.9
	12/13/2001	176.55	9.26	167.29	NA	NA	NA	NA	NA	NA
	3/14/2002	176.55	8.69	167.86	800	<0.50	<0.50	<0.50	<1.0	952
	6/19/2002	176.55	9.06	167.49	NA	NA	NA	NA	NA	NA
	9/10/2002	176.55	9.23	167.32	260	<2.0	<2.0	<2.0	<2.0	580
	12/16/2002	176.55	7.77	168.78	NA	NA	NA	NA	NA	NA
	3/11/2003	176.55	8.30	168.25	620	<2.5	<2.5	<2.5	<2.5	1100
	6/17/2003	176.55	9.51	167.04	NA	NA	NA	NA	NA	NA
	9/17/2003	176.55	9.52	167.03	<50	<0.5	<0.5	<0.5	<0.5	460
	12/9/2003	176.55	8.99	167.56	<50	<0.5	<0.5	<0.5	<0.5	420
	2/26/2004	176.55	6.55	170.00	<50	<0.5	<0.5	<0.5	<0.5	330
	5/21/2004	176.55	8.90	167.65	<50	<0.5	<0.5	<0.5	<0.5	630
	8/10/2004	179.11	9.58	169.53	<50	<0.5	<0.5	<0.5	<0.5	750
	10/19/2004	179.11	9.20	169.91	<50	<0.5	<0.5	<0.5	<0.5	550
	1/14/2005	179.11	7.25	171.86	<50	<2.0	<2.0	<2.0	<2.0	250
	4/14/2005	179.11	7.94	171.17	<200	<0.5	<0.5	<0.5	<1.0	285
	7/7/2005	179.11	9.08	170.03	<400	<1.0	<4.0	<1.0	<2.0	452
	11/15/2005	179.11	9.14	169.97	<50	<0.5	<2.0	<0.5	<1.0	110
	2/8/2006	179.11	7.93	171.18	<50	<0.5	<2.0	<0.5	<1.0	101
	4/27/2006	179.11	8.40	170.71	<50	<0.5	<2.0	<0.5	<1.0	131
	8/1/2006	179.11	8.89	170.22	<50	<0.5	<2.0	<0.5	<1.0	68.6
10/19/2006	179.11	9.44	169.67	<50	<0.5	<2.0	<0.5	<1.0	65.5	
1/12/2007	179.11	8.91	170.20	<50	<0.5	<2.0	<0.5	<2.0	38	
4/17/2007	179.11	8.58	170.53	<50	<0.5	<2.0	<0.5	<2.0	24.7	

Table 1
Historical Groundwater Elevations & Analytical Data
TPH-g, BTEX, MtBE
3519 Castro Valley Blvd, Castro Valley, CA

Monitoring Well	Date	Top of casing elevation ¹ (feet)	Depth to Groundwater (feet)	Groundwater Elevation (feet)	TPH-g (µg/L)	Benzene (µg/L)	Toluene (µg/L)	Ethyl benzene (µg/L)	Total Xylenes (µg/L)	MtBE (µg/L) 8260B
MW-8	7/28/1995	176.34	7.80	168.54	1,100	<2.5	<2.5	<2.5	<5.0	NA
	11/17/1995	176.34	8.29	168.05	8,300	75	5.3	670	240	140
	2/7/1996	176.34	4.99	171.35	2,300	33	<10	190	216	<100
	4/23/1996	176.34	6.09	170.25	2,000	390	<10	150	26	<250
QC-2	4/1/1993	NM	NM	NM	<50	<0.5	<0.5	<0.5	<0.5	NA
	6/29/1993	NM	NM	NM	<50	<0.5	<0.5	<0.5	<0.5	NA
	9/23/1993	NM	NM	NM	<50	<0.5	<0.5	<0.5	<0.5	NA
	12/10/1993	NM	NM	NM	<50	<0.5	<0.5	<0.5	<0.5	<5.0
	2/17/1994	NM	NM	NM	<50	<0.5	<0.5	<0.5	<0.5	NA
	8/8/1994	NM	NM	NM	<50	<0.5	<0.5	<0.5	<0.5	NA
	10/12/1994	NM	NM	NM	<50	<0.5	<0.5	<0.5	<0.5	NA
	1/19/1995	NM	NM	NM	<50	<0.5	<0.5	<0.5	<1.0	NA
	5/2/1995	NM	NM	NM	<50	<0.50	<0.50	<0.50	<1.0	NA
	7/28/1995	NM	NM	NM	<50	<0.50	<0.50	<0.50	<1.0	NA
	11/17/1995	NM	NM	NM	<50	<0.50	<0.50	<0.50	<1.0	<5.0
	2/7/1996	NM	NM	NM	<50	<0.5	<1.0	<1.0	<1.0	<10
	4/23/1996	NM	NM	NM	<50	<0.5	<1.0	<1.0	<1.0	<10
7/9/1996	NM	NM	NM	<50	<0.5	<1.0	<1.0	<1.0	<10	
SOMA-1	8/10/2004	180.95	11.53	169.42	84	<0.5	<0.5	1.5 C	2.2	2100
	10/19/2004	180.95	10.41	170.54	56	<0.5	<0.5	1.3 C	1.4 C	1600
	1/14/2005	180.95	9.68	171.27	58	<3.1	<3.1	<3.1	<3.1	330
	4/14/2005	180.95	9.37	171.58	<2200	<5.5	<5.5	<5.5	<11	668
	7/7/2005	180.95	10.21	170.74	<860	<2.15	<8.6	<2.15	<4.3	591
	11/15/2005	180.95	10.70	170.25	<50	<0.5	<2.0	1.1	<1.0	256
	2/8/2006	180.95	9.30	171.65	127	1.56	<2.0	3.23	3.12	176
	4/27/2006	180.95	9.64	171.31	81.6	1.14	<2.0	2.8	<1.0	189
	8/1/2006	180.95	10.25	170.70	<50	1.07	<2.0	1.46	<1.0	122
	10/19/2006	180.95	10.73	170.22	<50	0.68	<2.0	4.17	<1.0	116

Table 1
Historical Groundwater Elevations & Analytical Data
TPH-g, BTEX, MtBE
3519 Castro Valley Blvd, Castro Valley, CA

Monitoring Well	Date	Top of casing elevation ¹ (feet)	Depth to Groundwater (feet)	Groundwater Elevation (feet)	TPH-g (µg/L)	Benzene (µg/L)	Toluene (µg/L)	Ethyl benzene (µg/L)	Total Xylenes (µg/L)	MtBE (µg/L) 8260B
SOMA-1 cont	1/12/2007	180.95	10.38	170.57	<50	<0.5	<2.0	<0.5	<2.0	68.7
	4/17/2007	180.95	10.09	170.86	<50	5.76	<2.0	4.33	2.59	33.4
SOMA-2	8/10/2004	178.99	10.69	168.30	<50	<0.5	<0.5	<0.5	<0.5	0.8
	10/19/2004	178.99	10.75	168.24	<50	<0.5	<0.5	<0.5	<0.5	2.4
	1/14/2005	178.99	9.45	169.54	<50	<0.5	<0.5	<0.5	<0.5	1.1
	4/14/2005	178.99	10.46	168.53	<200	<0.5	<0.5	<0.5	<1.0	<0.5
	7/7/2005	178.99	11.81	167.18	<200	<0.5	<2.0	<0.5	<1.0	<0.5
	11/15/2005	178.99	12.02	166.97	<50	<0.5	<2.0	<0.5	<1.0	1.61
	2/8/2006	178.99	11.88	167.11	<50	<0.5	<2.0	<0.5	<1.0	<0.5
	4/27/2006	178.99	10.95	168.04	<50	<0.5	<2.0	<0.5	<1.0	<0.5
	8/1/2006	178.99	11.85	167.14	<50	<0.5	<2.0	<0.5	<1.0	1.11
	10/19/2006	178.99	10.62	168.37	<50	<0.5	<2.0	<0.5	<1.0	1.36
	1/12/2007	178.99	10.26	168.73	<50	<0.5	<2.0	<0.5	<2.0	<0.5
	4/17/2007	178.99	11.88	167.11	<50	<0.5	<2.0	<0.5	<2.0	0.87
	SOMA-3	8/10/2004	176.81	9.97	166.84	<50	<0.5	<0.5	<0.5	<0.5
10/19/2004		176.81	9.59	167.22	<50	<0.5	<0.5	<0.5	<0.5	<0.5
1/14/2005		176.81	8.23	168.58	<50	<0.5	<0.5	<0.5	<0.5	<0.5
4/14/2005		176.81	8.64	168.17	<200	<0.5	<0.5	<0.5	<1.0	<0.5
7/7/2005		176.81	9.60	167.21	<200	<0.5	<2.0	<0.5	<1.0	<0.5
11/15/2005		176.81	10.01	166.80	<50	<0.5	<2.0	<0.5	<1.0	5.1
2/8/2006		176.81	8.80	168.01	<50	<0.5	<2.0	<0.5	<1.0	7.16
4/27/2006		176.81	9.00	167.81	<50	<0.5	<2.0	<0.5	<1.0	14.2
8/1/2006		176.81	9.91	166.90	<50	<0.5	<2.0	<0.5	<1.0	7.29
10/19/2006		176.81	10.21	166.60	<50	<0.5	<2.0	<0.5	<1.0	41.4
1/12/2007		176.81	9.73	167.08	<50	<0.5	<2.0	<0.5	<2.0	20.9
4/17/2007		176.81	9.81	167.00	<50	<0.5	<2.0	<0.5	<2.0	32.1

Table 1
Historical Groundwater Elevations & Analytical Data
TPH-g, BTEX, MtBE
3519 Castro Valley Blvd, Castro Valley, CA

Monitoring Well	Date	Top of casing elevation ¹ (feet)	Depth to Groundwater (feet)	Groundwater Elevation (feet)	TPH-g (µg/L)	Benzene (µg/L)	Toluene (µg/L)	Ethyl benzene (µg/L)	Total Xylenes (µg/L)	MtBE (µg/L) 8260B
SOMA-4	8/10/2004	176.94	9.44	167.50	140	0.98	<0.5	7.8	<0.5	11
	10/19/2004	176.94	9.91	167.03	150	<0.5	<0.5	10	<0.5	8.8
	1/14/2005	176.94	8.36	168.58	500	3.7	<0.5	53	<0.5	7.6
	4/14/2005	176.94	7.89	169.05	<200	0.74	<0.5	3.21	<1.0	5.65
	7/7/2005	176.94	11.62	165.32	<200	<0.5	<2.0	0.56	<1.0	7.09
	11/15/2005	176.94	9.33	167.61	<50	<0.5	<2.0	<0.5	<1.0	8.6
	2/8/2006	176.94	9.18	167.76	55.8	<0.5	<2.0	0.85	<1.0	10.4
	4/27/2006	176.94	8.75	168.19	172	1.35	<2.0	8.83	<1.0	11.7
	8/1/2006	176.94	9.52	167.42	<50	0.52	<2.0	1.53	<1.0	14.1
	10/19/2006	176.94	9.51	167.43	<50	<0.5	<2.0	<0.5	<1.0	19.2
	1/12/2007	176.94	8.98	167.96	<50	<0.5	<2.0	<0.5	<2.0	20.4
	4/17/2007	176.94	8.96	167.98	<50	<0.5	<2.0	4.33	<2.0	15.8

Notes:

< : Not detected above laboratory reporting limit.

1 Top of Casing Elevations were resurveyed by Kier & Wright Engineers Surveyors of Pleasanton, CA on June 21, 2004.

C: Presence confirmed, but RPD between columns exceeds 40%.

H: Heavier hydrocarbons contributed to the quantitation.

NA: Not Analyzed. Due to construction activities in the Third Quarter 2003, which consisted of the replacement of the USTs and dispensers, wells ESE-1 & ESE-2 were inaccessible. Well ESE-2 also inaccessible during the First Quarter 2007.

NM: Not Measured

Well ESE-2 was covered over with dirt during the First Quarter 2007 monitoring event.

Z: Sample exhibits unknown single peak or peaks.

The Third Quarter 2003 was the first time that SOMA analyzed groundwater samples at the site.

The Third Quarter 2004 was the first time that SOMA analyzed groundwater samples at wells SOMA-1 to SOMA-4.

Table 2
Historical Groundwater Analytical Data
Gasoline Oxygenates & Lead Scavengers
3519 Castro Valley Blvd, Castro Valley, CA

Monitoring Well	Date	TBA (µg/L)	DIPE (µg/L)	ETBE (µg/L)	TAME (µg/L)	ETHANOL (µg/L)	1,2-DCA (µg/L)	EDB (µg/L)
ESE-1	6/17/2003	<400	<10	<10	18	NA	NA	NA
	9/17/2003	NA	NA	NA	NA	NA	NA	NA
	12/9/2003	290	<1.0	<1.0	9.5	<2,000	<1.0	<1.0
	2/26/2004	410	<0.5	<0.5	9.7	<1000	<0.5	<0.5
	5/21/2004	190	<0.5	<0.5	<0.5	<1000	<0.5	<0.5
	8/10/2004	180	<0.5	<0.5	<0.5	<1000	<0.5	<0.5
	10/19/2004	270	<0.7	<0.7	4.4	<1400	9.9	<0.7
	1/14/2005	280	<1.3	<1.3	<1.3	<2,500	<1.3	<1.3
	4/14/2005	144	<2.15	<2.15	<8.6	<4300	<2.15	<2.15
	7/7/2005	119	<2.15	<2.15	<8.6	<4300	<2.15	<2.15
	11/15/2005	107	<0.5	<0.5	<2.0	<1000	<0.5	<0.5
	2/8/2006	181	<2.15	<2.15	<8.6	<4300	<2.15	<2.15
	4/27/2006	261	<2.15	<2.15	<8.6	<4300	<2.15	<2.15
	8/1/2006	165	<1.0	<1.0	<4.0	<2000	<1.0	<1.0
	10/19/2006	154	<1.0	<1.0	<4.0	<2000	<1.0	<1.0
	1/12/2007	103	<0.5	<0.5	<2.0	<1000	<0.5	<0.5
	4/17/2007	80.5	<0.5	<0.5	<0.5	<2.0	<1000	<0.5

Table 2
Historical Groundwater Analytical Data
Gasoline Oxygenates & Lead Scavengers
3519 Castro Valley Blvd, Castro Valley, CA

Monitoring Well	Date	TBA (µg/L)	DIPE (µg/L)	ETBE (µg/L)	TAME (µg/L)	ETHANOL (µg/L)	1,2-DCA (µg/L)	EDB (µg/L)
ESE-2	6/17/2003	<4000	<100	<100	<100	NA	NA	NA
	9/17/2003	NA	NA	NA	NA	NA	NA	NA
	12/9/2003	500	<13	<13	77	<25,000	<13	<13
	2/26/2004	1200	<0.5	<0.5	92	<1000	<0.5	<0.5
	5/21/2004	2400	<10	<10	25	<20,000	<10	<10
	8/10/2004	2300	<2.5	<2.5	12	<5000	<2.5	<2.5
	10/19/2004	1800	<3.6	<3.6	8.6	<7100	<3.6	<3.6
	1/14/2005	470	<8.3	<8.3	28	<17,000	<8.3	<8.3
	4/14/2005	<10.8	<2.15	<2.15	17.9	<4300	<2.15	<2.15
	7/7/2005	109	<2.15	<2.15	9.7	<4300	<2.15	<2.15
	11/15/2005	64.7	<0.5	<0.5	3.43	<1000	<0.5	<0.5
	2/8/2006	46.4	<2.15	<2.15	11	<4300	<2.15	<2.15
	4/27/2006	47.7	<1.0	<1.0	8.29	<2000	<1.0	<1.0
	8/1/2006	20.6	<1.0	<1.0	4.67	<2000	<1.0	<1.0
	10/19/2006	28.9	<0.5	<0.5	4.55	<1000	<0.5	<0.5
	1/12/2007	NA	NA	NA	NA	NA	NA	NA
4/17/2007	60.8	<0.5	<0.5	3.85	<1000	<0.5	<0.5	
ESE-3	6/17/2003	<200	<5.0	<5.0	<5.0	NA	NA	NA
ESE-5	9/17/2003	<10	<0.5	<0.5	<0.5	<1000	<0.5	<0.5
	12/9/2003	<10	<0.5	<0.5	<0.5	<1,000	<0.5	<0.5
	2/26/2004	<10	<0.5	<0.5	<0.5	<1,000	<0.5	<0.5
	5/21/2004	<10	<0.5	<0.5	<0.5	<1,000	<0.5	<0.5
	8/10/2004	<10	<0.5	<0.5	<0.5	<1,000	<0.5	<0.5
	10/19/2004	<10	<0.5	<0.5	<0.5	<1000	<0.5	<0.5

Table 2
Historical Groundwater Analytical Data
Gasoline Oxygenates & Lead Scavengers
3519 Castro Valley Blvd, Castro Valley, CA

Monitoring Well	Date	TBA (µg/L)	DIPE (µg/L)	ETBE (µg/L)	TAME (µg/L)	ETHANOL (µg/L)	1,2-DCA (µg/L)	EDB (µg/L)
ESE-5 cont.	1/14/2005	<10	<0.5	<0.5	<0.5	<1000	<0.5	<0.5
	4/14/2005	17	<0.5	<0.5	<2.0	<1000	<0.5	<0.5
	7/7/2005	<10	<0.5	<0.5	<2.0	<1000	<0.5	<0.5
	11/15/2005	<10	<0.5	<0.5	<2.0	<1000	<0.5	<0.5
	2/8/2006	<10	<0.5	<0.5	<2.0	<1000	<0.5	<0.5
	4/27/2006	<10	<0.5	<0.5	<2.0	<1000	<0.5	<0.5
	8/1/2006	<10	<0.5	<0.5	<2.0	<1000	<0.5	<0.5
	10/19/2006	<10	<0.5	<0.5	<2.0	<1000	<0.5	<0.5
	1/12/2007	<2.0	<0.5	<0.5	<2.0	<1000	<0.5	<0.5
	4/17/2007	8.7	<0.5	<0.5	<0.5	<2.0	<1000	<0.5
MW-6	9/17/2003	<10	<0.5	<0.5	<0.5	<1000	<0.5	<0.5
	12/9/2003	<10	<0.5	<0.5	<0.5	<1,000	<0.5	<0.5
	2/26/2004	<10	<0.5	<0.5	<0.5	<1,000	<0.5	<0.5
	5/21/2004	<10	<0.5	<0.5	<0.5	<1,000	<0.5	<0.5
	8/10/2004	<10	<0.5	<0.5	<0.5	<1,000	<0.5	<0.5
	10/19/2004	<10	<0.5	<0.5	<0.5	<1000	<0.5	<0.5
	1/14/2005	<10	<0.5	<0.5	<0.5	<1000	<0.5	<0.5
	4/14/2005	<2.5	<0.5	<0.5	<2.0	<1000	<0.5	<0.5
	7/7/2005	<10	<0.5	<0.5	<2.0	<1000	<0.5	<0.5
	11/15/2005	<10	<0.5	<0.5	<2.0	<1000	<0.5	<0.5
	2/8/2006	<10	<0.5	<0.5	<2.0	<1000	<0.5	<0.5
	4/27/2006	<10	<0.5	<0.5	<2.0	<1000	<0.5	<0.5
	8/1/2006	<10	<0.5	<0.5	<2.0	<1000	<0.5	<0.5
	10/19/2006	<10	<0.5	<0.5	<2.0	<1000	<0.5	<0.5
	1/12/2007	<2.0	<0.5	<0.5	<2.0	<1000	<0.5	<0.5
	4/17/2007	<2.0	<0.5	<0.5	<0.5	<2.0	<1000	<0.5

Table 2
Historical Groundwater Analytical Data
Gasoline Oxygenates & Lead Scavengers
3519 Castro Valley Blvd, Castro Valley, CA

Monitoring Well	Date	TBA (µg/L)	DIPE (µg/L)	ETBE (µg/L)	TAME (µg/L)	ETHANOL (µg/L)	1,2-DCA (µg/L)	EDB (µg/L)
MW-7	9/17/2003	<10	<0.5	<0.5	9.8	<1000	<0.5	<0.5
	12/9/2003	<25	<1.3	<1.3	8.1	<2500	<1.3	<1.3
	2/26/2004	<10	<0.5	<0.5	9.9	<1000	<0.5	<0.5
	5/21/2004	<10	<0.5	<0.5	<0.5	<1,000	<0.5	<0.5
	8/10/2004	<25	<1.3	<1.3	19	<2500	<1.3	<1.3
	10/19/2004	<100	<5.0	<5.0	11	<10,000	<5.0	<5.0
	1/14/2005	<40	<2.0	<2.0	5.1	<4,000	<2.0	<2.0
	4/14/2005	2.62	<0.5	<0.5	4.57	<1000	<0.5	<0.5
	7/7/2005	55.6	<1.0	<1.0	10.2	<2000	<1.0	<1.0
	11/15/2005	10.6	<0.5	<0.5	2.07	<1000	<0.5	<0.5
	2/8/2006	<10	<0.5	<0.5	2.19	<1000	<0.5	<0.5
	4/27/2006	<10	<0.5	<0.5	2.63	<1000	<0.5	<0.5
	8/1/2006	<10	<0.5	<0.5	<2.0	<1000	<0.5	<0.5
	10/19/2006	<10	<0.5	<0.5	<2.0	<1000	<0.5	<0.5
	1/12/2007	<2.0	<0.5	<0.5	<2.0	<1000	<0.5	<0.5
4/17/2007	11.6	<0.5	<0.5	<2.0	<1000	<0.5	<0.5	
SOMA-1	8/10/2004	2300	<6.3	<6.3	53	<13000	<6.3	<6.3
	10/19/2004	2400	<13	<13	36	<25,000	<13	<13
	1/14/2005	530	<3.1	<3.1	7.1	<6,300	<3.1	<3.1
	4/14/2005	<27.5	<5.5	<5.5	<22	<11000	<5.5	<5.5
	7/7/2005	2180	<2.15	<2.15	12.9	<4300	<2.15	<2.15
	11/15/2005	792	<0.5	<0.5	5.01	<1000	<0.5	<0.5
	2/8/2006	618	<0.5	<0.5	3.67	<1000	<0.5	<0.5
	4/27/2006	983	<0.5	<0.5	3.48	<1000	<0.5	<0.5
	8/1/2006	639	<0.5	<0.5	2.27	<1000	<0.5	<0.5
10/19/2006	603	<0.5	<0.5	2.25	<1000	<0.5	<0.5	

Table 2
Historical Groundwater Analytical Data
Gasoline Oxygenates & Lead Scavengers
3519 Castro Valley Blvd, Castro Valley, CA

Monitoring Well	Date	TBA (µg/L)	DIPE (µg/L)	ETBE (µg/L)	TAME (µg/L)	ETHANOL (µg/L)	1,2-DCA (µg/L)	EDB (µg/L)
SOMA-1 cont.	1/12/2007	396	<0.5	<0.5	<2.0	<1000	<0.5	<0.5
	4/17/2007	148	<0.5	<0.5	<2.0	<1000	<0.5	<0.5
SOMA-2	8/10/2004	<10	<0.5	<0.5	<0.5	<1000	<0.5	<0.5
	10/19/2004	<10	<0.5	<0.5	<0.5	<1000	<0.5	<0.5
	1/14/2005	<10	<0.5	<0.5	<0.5	<1000	<0.5	<0.5
	4/14/2005	<2.5	<0.5	<0.5	<2.0	<1000	<0.5	<0.5
	7/7/2005	<10	<0.5	<0.5	<2.0	<1000	<0.5	<0.5
	11/15/2005	<10	<0.5	<0.5	<2.0	<1000	<0.5	<0.5
	2/8/2006	<10	<0.5	<0.5	<2.0	<1000	<0.5	<0.5
	4/27/2006	<10	<0.5	<0.5	<2.0	<1000	<0.5	<0.5
	8/1/2006	<10	<0.5	<0.5	<2.0	<1000	<0.5	<0.5
	10/19/2006	<10	<0.5	<0.5	<2.0	<1000	<0.5	<0.5
	1/12/2007	<2.0	<0.5	<0.5	<2.0	<1000	<0.5	<0.5
	4/17/2007	14.6	<0.5	<0.5	<2.0	<1000	<0.5	<0.5
	SOMA-3	8/10/2004	<10	<0.5	<0.5	<0.5	<1000	<0.5
10/19/2004		<10	<0.5	<0.5	<0.5	<1,000	<0.5	<0.5
1/14/2005		<10	<0.5	<0.5	<0.5	<1,000	<0.5	<0.5
4/14/2005		<2.5	<0.5	<0.5	<2.0	<1000	<0.5	<0.5
7/7/2005		<10	<0.5	<0.5	<2.0	<1000	<0.5	<0.5
11/15/2005		<10	<0.5	<0.5	<2.0	<1000	<0.5	<0.5
2/8/2006		<10	<0.5	<0.5	<2.0	<1000	<0.5	<0.5
4/27/2006		<10	<0.5	<0.5	<2.0	<1000	<0.5	<0.5
8/1/2006		<10	<0.5	<0.5	<2.0	<1000	<0.5	<0.5
10/19/2006		<10	<0.5	<0.5	<2.0	<1000	<0.5	<0.5
1/12/2007		<2.0	<0.5	<0.5	<2.0	<1000	<0.5	<0.5
4/17/2007		6.72	<0.5	<0.5	<2.0	<1000	<0.5	<0.5

Table 2
Historical Groundwater Analytical Data
Gasoline Oxygenates & Lead Scavengers
3519 Castro Valley Blvd, Castro Valley, CA

Monitoring Well	Date	TBA (µg/L)	DIPE (µg/L)	ETBE (µg/L)	TAME (µg/L)	ETHANOL (µg/L)	1,2-DCA (µg/L)	EDB (µg/L)
SOMA-4	8/10/2004	<10	<0.5	<0.5	<0.5	<1000	<0.5	<0.5
	10/19/2004	<10	<0.5	<0.5	<0.5	<1,000	<0.5	<0.5
	1/14/2005	<10	<0.5	<0.5	<0.5	<1,000	<0.5	<0.5
	4/14/2005	<2.5	<0.5	<0.5	<2.0	<1000	<0.5	<0.5
	7/7/2005	<10	<0.5	<0.5	<2.0	<1000	<0.5	<0.5
	11/15/2005	<10	<0.5	<0.5	<2.0	<1000	<0.5	<0.5
	2/8/2006	<10	<0.5	<0.5	<2.0	<1000	<0.5	<0.5
	4/27/2006	<10	<0.5	<0.5	<2.0	<1000	<0.5	<0.5
	8/1/2006	<10	<0.5	<0.5	<2.0	<1000	<0.5	<0.5
	10/19/2006	<10	<0.5	<0.5	<2.0	<1000	<0.5	<0.5
	1/12/2007	<2.0	<0.5	<0.5	<2.0	<1000	<0.5	<0.5
	4/17/2007	3.98	<0.5	<0.5	<2.0	<1000	<0.5	<0.5

Notes:

< : Not detected above laboratory reporting limit.

NA: Not Analyzed. Due to construction activities in the Third Quarter 2003, which consisted of the replacement of the USTs and dispensers, wells ESE-1 & ESE-2 were inaccessible.

Well ESE-2 was inaccessible during the First Quarter 2007, dirt was covered over well. The Third Quarter 2003 was the first time that SOMA analyzed groundwater samples at the Site.

The Third Quarter 2004 was the first time that SOMA analyzed groundwater samples at wells SOMA-1 to SOMA-4.

Gasoline Oxygenates:

TBA: tertiary butyl alcohol

DIPE: isopropyl ether

ETBE: ethyl tertiary butyl ether

TAME: methyl tertiary amyl ether

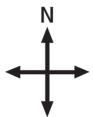
Ethanol

Lead Scavengers:

1,2-DCA: 1,2-Dichloroethane

EDB: 1,2-Dibromoethane

Figures



approximate scale in feet

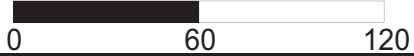


Figure 1: Site vicinity map.

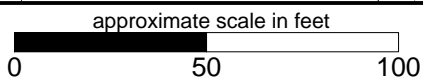
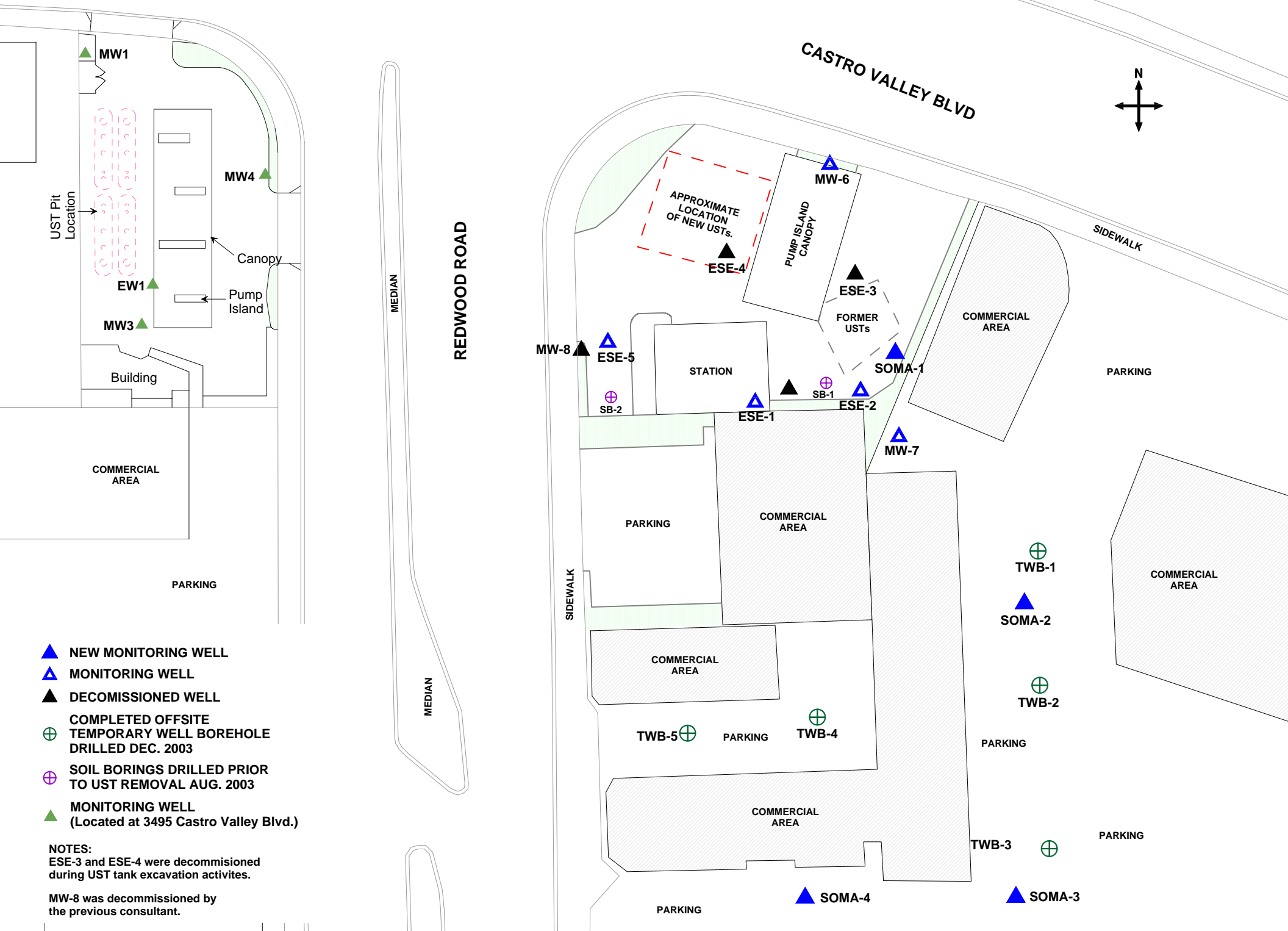
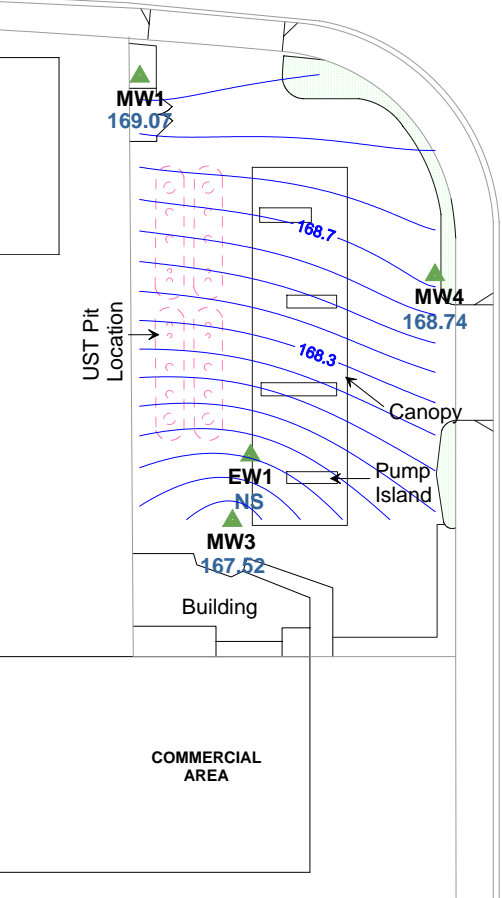


Figure 2: Site map showing locations of existing monitoring wells, decommissioned wells, offsite temporary well boreholes, and monitoring wells installed by SOMA.

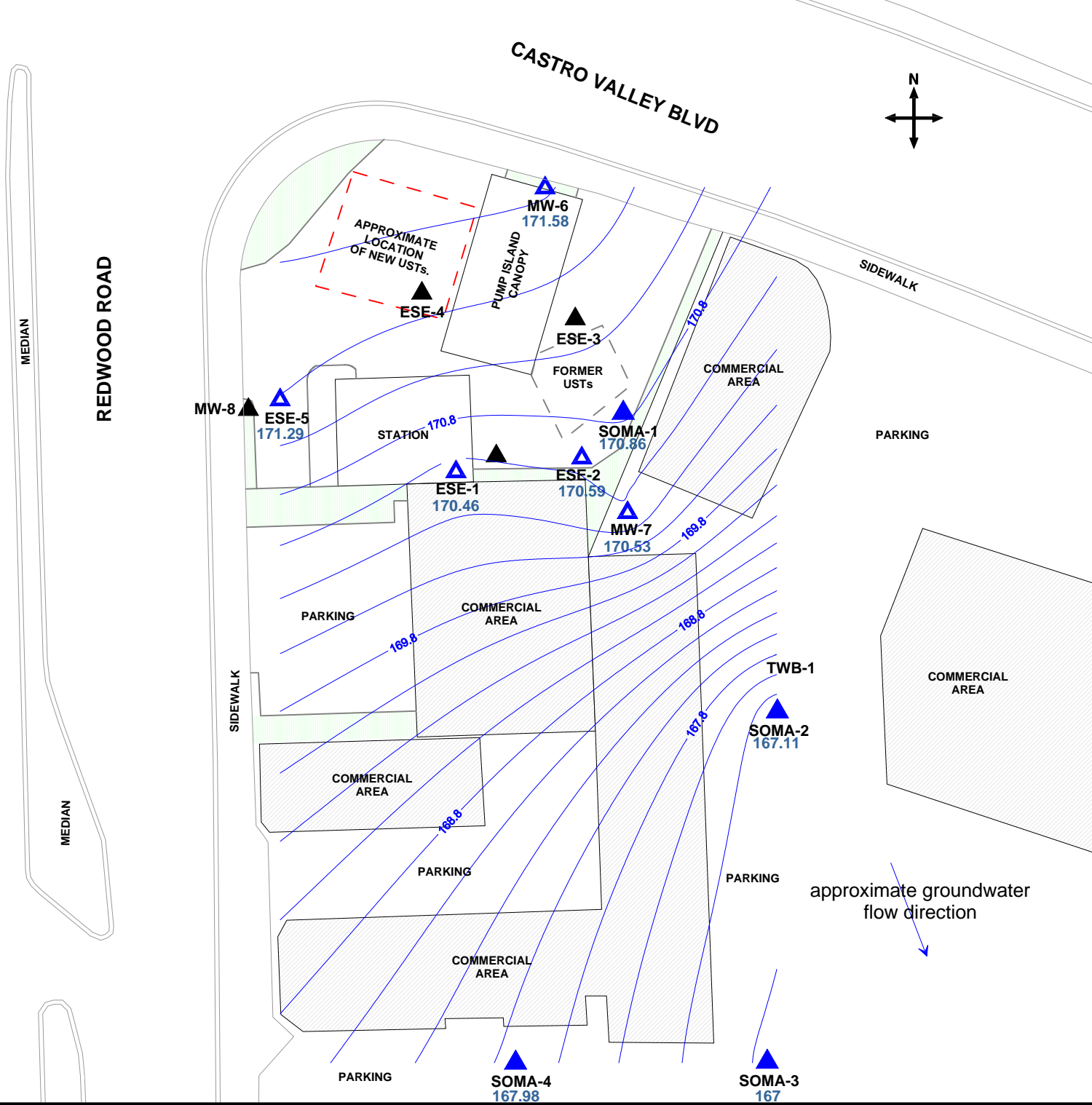
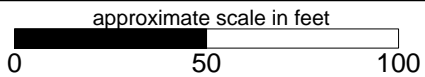


approximate groundwater flow direction

- ▲ NEW MONITORING WELL
- ▲ MONITORING WELL
- ▲ DECOMMISSIONED WELL
- ▲ MONITORING WELL (Located at 3495 Castro Valley Blvd.)

NOTES:
ESE-3 and ESE-4 were decommissioned during UST tank excavation activities.

MW-8 was decommissioned by the previous consultant.



approximate groundwater flow direction

Figure 3: Groundwater elevation contour map in feet. April 17, 2007.

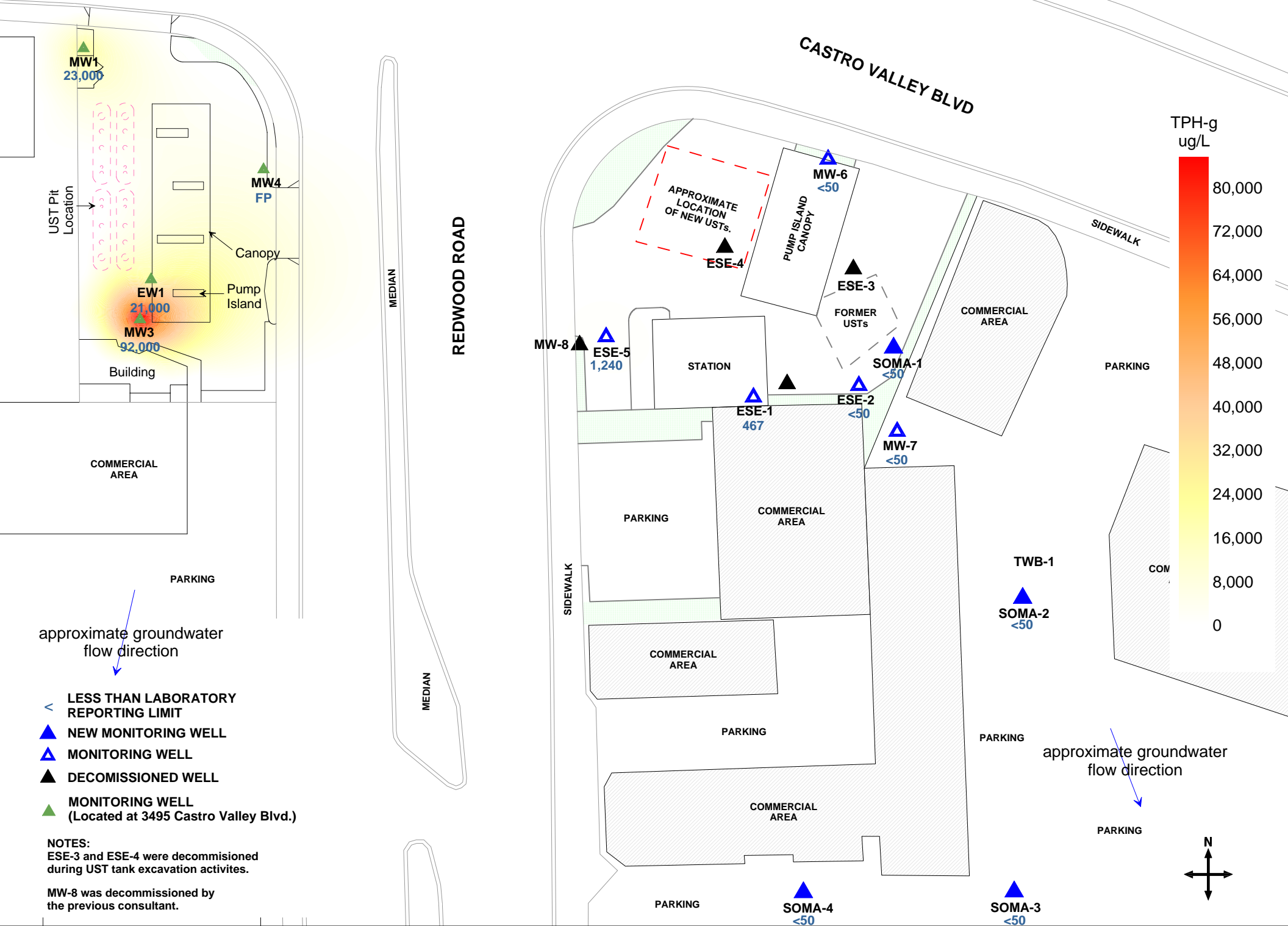


Figure 4: Contour map of TPH-g concentrations in groundwater. April 17, 2007.

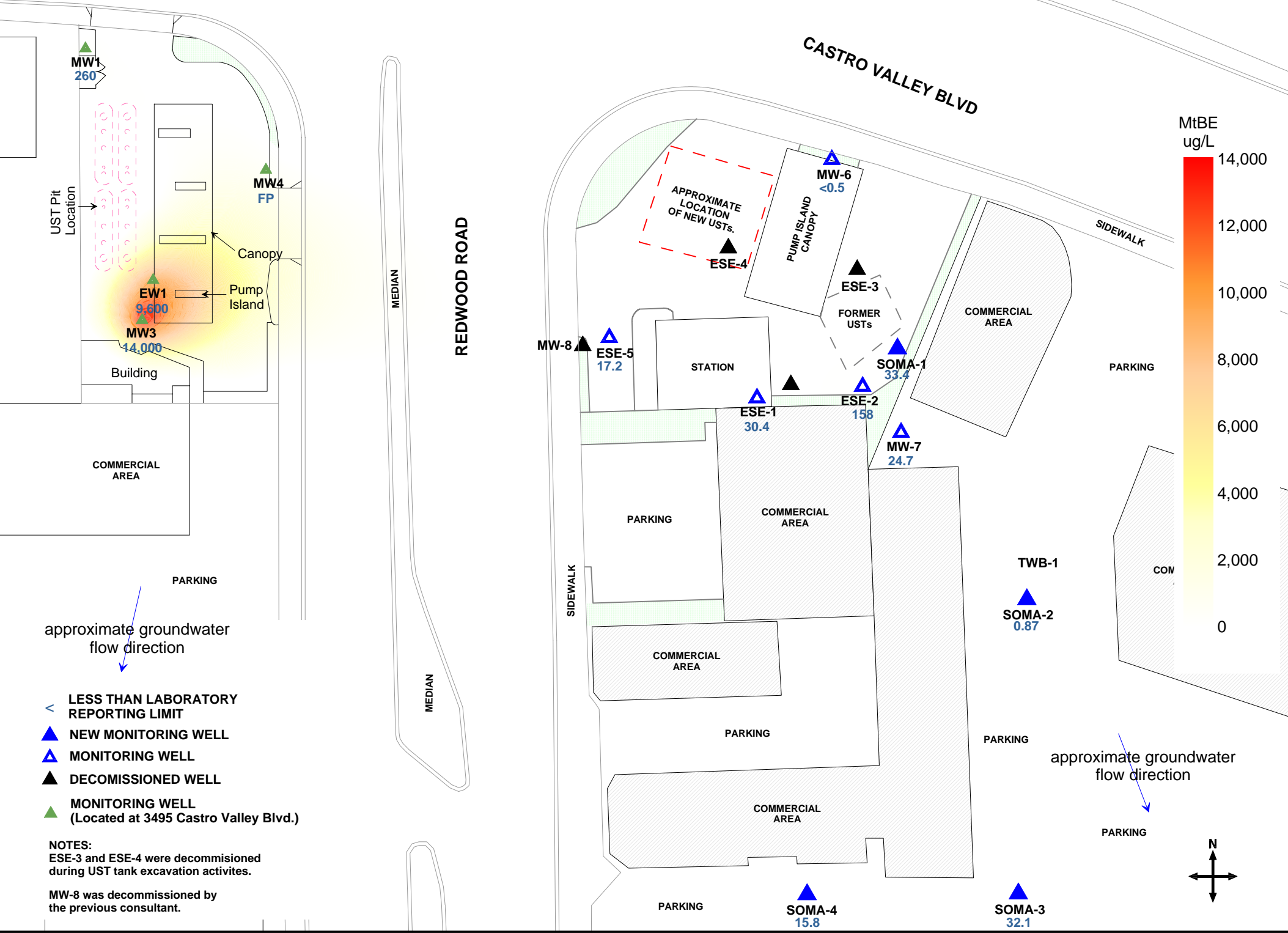


Figure 5: Contour map of MtBE concentrations in groundwater. (EPA Method 8260B). April 17, 2007.

APPENDIX A

SOMA's Groundwater Monitoring Procedures

Field Activities

On April 17, 2007, five on-site monitoring wells (ESE-1, ESE-2, ESE-5, MW-6, and SOMA-1) and four off-site monitoring wells (MW-7, SOMA-2 to SOMA-4) were measured for depth to groundwater. On April 17, 2007, additional field measurements and grab groundwater samples were collected from all of the monitoring wells. Figure 2 illustrates well locations.

This monitoring event was conducted in accordance with procedures and guidelines of the California Regional Water Quality Control Board and Alameda County Health Care Services.

Prior to groundwater depth measurement at each well, equalization with the surrounding aquifer was achieved. The well cap was removed from each well, and the pressure in each well was then allowed to dissipate. This allowed for a more stable water table level within the well. After a few minutes, and once the water level in the well stabilized, the depth to groundwater in each monitoring well was measured from the top of the casing to the nearest 0.01 foot using an electric sounder.

The top of the casing elevation data and the depth to groundwater in each monitoring well were used to calculate the groundwater elevation. The top of casing elevation was based on an elevation datum of 56.33 feet NAVD88. Appendix B shows the survey data.

Prior to the sample collection, each well was purged using a battery operated 2-inch-diameter pump (Model ES-60 DC). In order to ensure that the final samples were in equilibrium with (and representative of) the surrounding groundwater, during purging, several samples were taken for field measurements of pH, temperature and EC. The field parameters were measured using a Hanna pH, conductivity, and temperature meter. The equipment was calibrated at the Site using standard solutions and procedures provided by the manufacturer.

Appendix B details the field measurements taken during the monitoring event.

The purging of the wells continued until the parameters for pH, temperature and EC stabilized or three casing volumes were purged. A disposable polyethylene bailer was used to collect sufficient samples from each well for laboratory analyses. The groundwater sample was transferred to three 40-mL VOA vials and preserved with hydrochloric acid. The vials were then sealed to prevent the development of air bubbles within the headspace.

After the groundwater samples were collected, they were placed into an ice-filled cooler. A chain of custody (COC) form was written for all of the samples and was submitted to the laboratory along with the groundwater samples. On April 17, 2007, SOMA's field crew delivered the groundwater samples to Pacific Analytical Laboratory in Alameda, California.

Laboratory Analysis

Pacific Analytical Laboratory, a state certified laboratory, analyzed the groundwater samples for TPH-g, BTEX, MtBE, gasoline oxygenates, and lead scavengers, which were prepared using EPA Method 5030B and analyzed using Method EPA 8260B.

Appendix B

Table of Elevations and Coordinates on Monitoring Wells
Measured by Kier Wright Civil Engineers Surveyors, Inc.
and
Field Measurements of Physical and Chemical
Properties of the Groundwater Samples Collected
During the Second Quarter 2007

**TABLE OF ELEVATIONS & COORDINATES
ON MONITORING WELLS**
SOMA ENVIRONMENTAL
3519 CASTRO VALLEY BLVD., CASTRO VALLEY

WELL ID #	NORTHING (FT.) / LATITUDE (D.M.S.)	EASTING (FT.) / LONGITUDE (D.M.S.)	ELEVATION (FT.)	DESCRIPTION
ESE-1	2079361.15	6106465.13	180.24	2" PVC, NOTVH N. SIDE
	N 37° 41' 42.07112"	W 122° 04' 24.07899"	180.71	SET PUNCH NORTH SIDE RIM
			180.69	PAVEMENT NORTH SIDE
ESE-2	2079361.30	6106501.97	180.79	2" PVC, NOTVH N. SIDE
	N 37° 41' 42.07873"	W 122° 04' 23.62071"	181.16	SET PUNCH NORTH SIDE RIM
			181.14	CONC. NORTH SIDE
ESE-5	2079381.46	6106387.63	178.80	2" PVC, NOTVH N. SIDE
	N 37° 41' 42.25902"	W 122° 04' 25.04739"	179.07	FELT X ON NORTH SIDE RIM
			179.10	CONC. NORTH SIDE
MW-6	2079451.94	6106492.77	181.80	2" PVC, NOTVH N. SIDE
	N 37° 41' 42.97323"	W 122° 04' 23.75412"	181.97	SET PUNCH NORTH SIDE RIM
			181.88	GROUND NORTH SIDE
MW-7	2079337.18	6106516.12	179.11	2" PVC, NOTVH N. SIDE
	N 37° 41' 41.84264"	W 122° 04' 23.43963"	179.55	SET PUNCH NORTH SIDE RIM
			179.49	CONC. NORTH SIDE
SOMA-1	2079370.39	6106506.79	180.95	2" PVC, NOTVH N. SIDE
	N 37° 41' 42.16939"	W 122° 04' 23.56265"	181.25	SET PUNCH NORTH SIDE RIM
			181.22	CONC. NORTH SIDE
SOMA-2	2079297.44	6106567.02	178.99	2" PVC, NOTVH N. SIDE
	N 37° 41' 41.45825"	W 122° 04' 22.79809"	179.29	SET PUNCH NORTH SIDE RIM
			179.28	CONC. NORTH SIDE
SOMA-3	2079130.83	6106567.48	176.81	2" PVC, NOTVH N. SIDE
	N 37° 41' 39.81129"	W 122° 04' 22.75752"	177.18	SET PUNCH NORTH SIDE RIM
			177.12	PAVEMENT NORTH SIDE
SOMA-4	2079141.57	6106464.22	176.94	2" PVC, NOTVH N. SIDE
	N 37° 41' 39.9003"	W 122° 04' 24.04438"	177.43	SET PUNCH NORTH SIDE RIM
			177.44	PAVEMENT NORTH SIDE

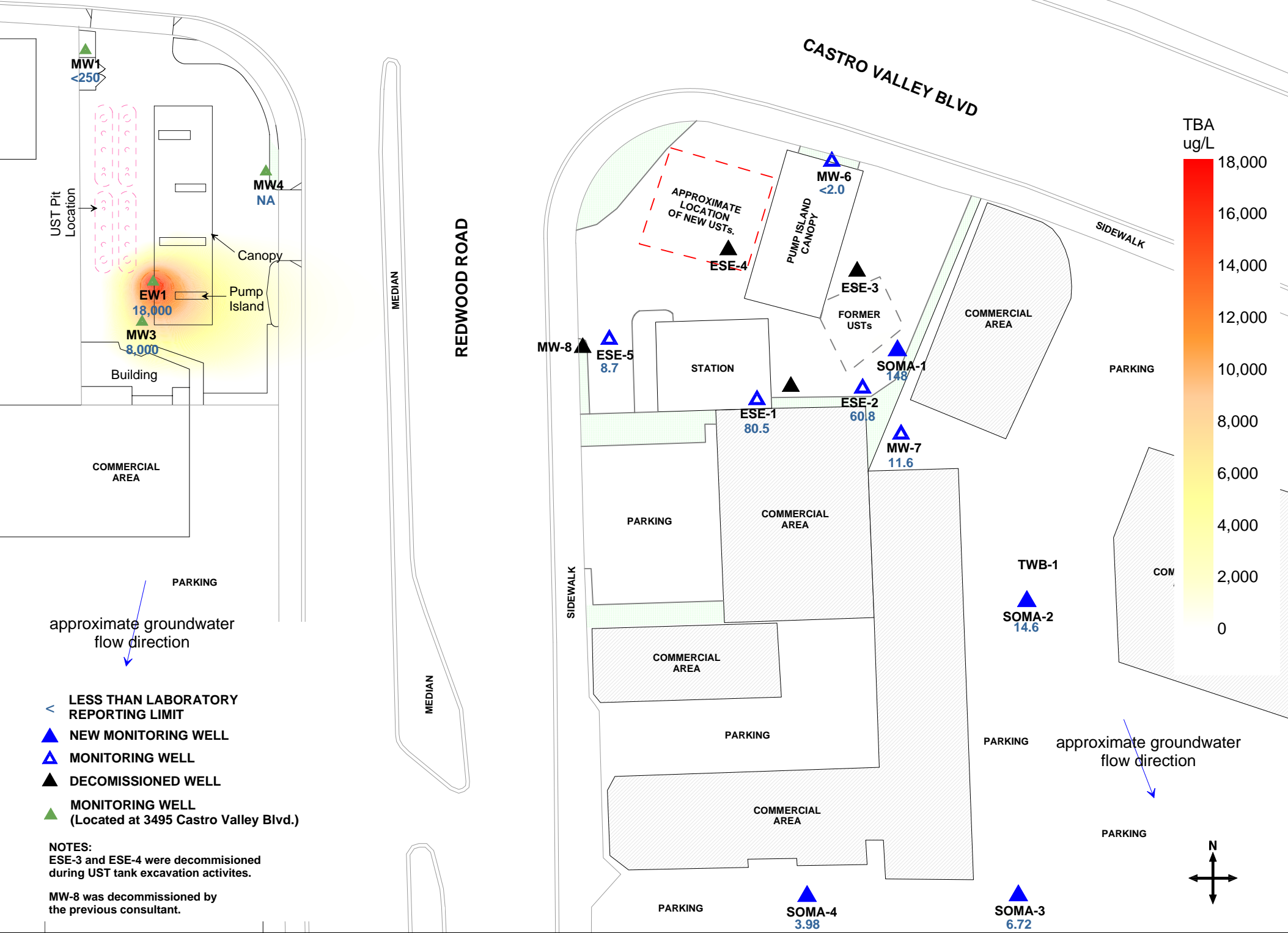


Figure 6: Contour map of TBA concentrations in groundwater.
April 17, 2007.

**TABLE OF ELEVATIONS & COORDINATES
ON MONITORING WELLS**

SOMA ENVIRONMENTAL
3519 CASTRO VALLEY BLVD., CASTRO VALLEY

ADDITIONAL POINTS

PT#	NORTHING (FT.)	EASTING (FT.)	ELEVATION (FT.)	DESCRIPTION
320	2079386.87	6106408.85	N/A	BL. INTX
321	2079387.18	6106455.22	N/A	BL. INTX
331	2079351.06	6106409.27	N/A	BL<
318	2079384.55	6106369.10	N/A	DWY
329	2079106.74	6106368.58	N/A	DWY
330	2079148.74	6106368.66	N/A	DWY
317	2079424.72	6106369.39	N/A	DWY E-C
315	2079481.34	6106432.38	N/A	DWY PCC
310	2079415.57	6106624.48	N/A	DWY POC
311	2079423.23	6106606.56	N/A	DWY POC
312	2079447.91	6106542.76	N/A	DWY POC
313	2079461.36	6106504.01	N/A	DWY POC
314	2079472.67	6106468.07	N/A	DWY POC
316	2079466.76	6106389.18	N/A	HCRMP POC
319	2079237.38	6106368.78	N/A	TC

BENCH MARK: NGS Bench mark No.PID# HT0223

THE STATION IS LOCATED IN THE CITY OF HAYWARD AT THE RAILROAD CROSSING OF THE SOUTHERN PACIFIC RAIL-ROAD AND BLOSSOM WAY, IN THE TOP OF THE NORTHWEST CURB OF BLOSSOM WAY.

TO REACH THE STATION FROM THE JUNCTION OF U S HIGHWAY 880 ON WEST A STREET, GO SOUTHEAST ON WEST A STREET FOR 0.2 MILES TO A CROSSROAD, HATHAWAY AVE ON THE LEFT, SANTA CLARA STREET ON THE RIGHT. TURN LEFT, NORTH, ON HATHAWAY AVENUE AND CONTINUE FOR 0.7 MILES TO WEST BLOSSOM WAY. TURN RIGHT, NORTH, ON WEST BLOSSOM WAY AND CONTINUE FOR 0.25 MILES TO THE STATION ON THE LEFT, JUST PAST THE RAIL-ROAD TRACKS.

THE STATION IS 48.95 M (160.6 FT) NORTHEAST OF THE NORTHEAST RAIL, 7.01 M NORTHWEST OF THE CENTER OF BLOSSOM WAY, 0.24 M (0.8 FT) NORTH OF THE NORTH CORNER OF A STEEL GRATE IN THE STREET, 5.6 M (18.5 FT) SOUTHWEST OF A POWER POLE AND 0.12 M (0.4 FT) HIGHER THAN THE STREET.

Elevation =56.33 FEET NAVD88 Datum
ADJUSTED

HORIZONTAL CONTROL:

PID - HT0223

NORTHING =2,072,670.26 , EASTING = 6,095,650.79 FEET; EPOCH DATE = 1998.50

PID - HT 2583

Kier & Wright Engineers Surveyors, Inc.

6/21/2005
10:19 AM
3519 Castro Valley

1233 Quarry Lane, Suite 145, Pleasanton, CA 94566
Phone (925) 249-6555,
Fax (925) 249-6563

**TABLE OF ELEVATIONS & COORDINATES
ON MONITORING WELLS**

SOMA ENVIRONMENTAL
3519 CASTRO VALLEY BLVD., CASTRO VALLEY

NORTHING =2,082,510.30 , EASTING = 6,116,892.13 FEET; EPOCH DATE = 1991.35

Coordinate values are based on the California Coordinate System, Zone III NAD 83 Datum.



ENVIRONMENTAL ENGINEERING, INC

Well No.: ESE-1
 Casing Diameter: 2 inches
 Depth of Well: 28.00 feet
 Top of Casing Elevation: 180.24 feet
 Depth to Groundwater: 9.78 feet
 Groundwater Elevation: 170.46 feet
 Water Column Height: 18.22 feet
 Purged Volume: 12 gallons

Project No.: 2761
 Address: 3519 Castro Valley Blvd
 Castro Valley, CA
 Date: April 17, 2007
 Sampler: Tony Perini

Purging Method: Bailer Pump

Sampling Method: Bailer Pump

Color: No Yes Describe: yellowish

Sheen: No Yes Describe: _____

Odor: No Yes Describe: slight petro odor

Field Measurements:

Time	Vol (gallons)	pH	Temp (°C)	E.C. (µs/cm)
138 PM	started purging well			
140 PM	2	6.81	18.80	1120
143 PM	5	6.73	18.10	1150
146 PM	8	6.77	18.10	1170
150 PM	12	6.64	18.40	1180
153 PM	sampled			



ENVIRONMENTAL ENGINEERING, INC

Well No.: ESE-2
 Casing Diameter: 2 inches
 Depth of Well: 26.50 feet
 Top of Casing Elevation: 180.79 feet
 Depth to Groundwater: 10.20 feet
 Groundwater Elevation: 170.59 feet
 Water Column Height: 16.30 feet
 Purged Volume: 13 gallons

Project No.: 2761
 Address: 3519 Castro Valley Blvd
 Castro Valley, CA
 Date: April 17, 2007
 Sampler: Tony Perini

Purging Method: Bailer Pump

Sampling Method: Bailer Pump

Color: No Yes Describe: _____

Sheen: No Yes Describe: _____

Odor: No Yes Describe: _____

Field Measurements:

Time	Vol (gallons)	pH	Temp (°C)	E.C. (µs/cm)
110 AM	Started purging well			
113 AM	3	6.76	18.10	1180
116 AM	6	6.86	17.30	1170
120 AM	10	6.82	17.40	1140
123 AM	13	6.86	17.40	1110
125 AM	- complete			



ENVIRONMENTAL ENGINEERING, INC

Well No.: ESE-5
 Casing Diameter: 2 inches
 Depth of Well: 23.80 feet
 Top of Casing Elevation: 178.80 feet
 Depth to Groundwater: 7.51 feet
 Groundwater Elevation: 171.29 feet
 Water Column Height: 15.29 feet
 Purged Volume: 9 gallons

Project No.: 2761
 Address: 3519 Castro Valley Blvd
 Castro Valley, CA
 Date: April 17, 2007
 Sampler: Tony Perini

Purging Method: Bailer Pump
 Sampling Method: Bailer Pump

Color: No Yes Describe: cloudy
 Sheen: No Yes Describe: _____
 Odor: No Yes Describe: light petro odor

Field Measurements:

Time	Vol (gallons)	pH	Temp (°C)	E.C. (µs/cm)
1105 Am	started purging well			
1108 Am	3	6.70	19.10	1230
1111 Am	6	6.66	19.40	1270
1114 Am	9	6.64	19.70	1280
1117 Am	sampled			



ENVIRONMENTAL ENGINEERING, INC

Well No.: MW-6 Project No.: 2761
 Casing Diameter: 2 inches Address: 3519 Castro Valley Blvd
 Depth of Well: 30.00 feet Castro Valley, CA
 Top of Casing Elevation: 181.80 feet Date: April 17, 2007
 Depth to Groundwater: 10.22 feet Sampler: Tony Perini
 Groundwater Elevation: 171.58 feet
 Water Column Height: 19.78 feet
 Purged Volume: 10 gallons

Purging Method: Bailer Pump
 Sampling Method: Bailer Pump
 Color: No Yes Describe: cloudy
 Sheen: No Yes Describe: _____
 Odor: No Yes Describe: _____

Field Measurements:

Time	Vol (gallons)	pH	Temp (°C)	E.C. (µs/cm)
1134 Am	started purging well			
1136 Am	2	7.05	17.70	880
1140 Am	6	7.04	17.80	890
1144 Am	10	6.63	18.60	880
1147 Am	samples			



ENVIRONMENTAL ENGINEERING, INC

Well No.: MW-7
 Casing Diameter: 2 inches
 Depth of Well: 29.35 feet
 Top of Casing Elevation: 179.11 feet
 Depth to Groundwater: 8.58 feet
 Groundwater Elevation: 170.53 feet
 Water Column Height: 20.77 feet
 Purged Volume: 12 gallons

Project No.: 2761
 Address: 3519 Castro Valley Blvd
 Castro Valley, CA
 Date: April 17, 2007
 Sampler: Tony Perini

Purging Method: Bailer Pump

Sampling Method: Bailer Pump

Color: No Yes Describe: cloudy

Sheen: No Yes Describe: _____

Odor: No Yes Describe: _____

Field Measurements:

Time	Vol (gallons)	pH	Temp (°C)	E.C. (µs/cm)
1020 AM	started purging well			
1023 AM	3	7.10	19.20	890
1026 AM	6	6.89	18.60	520
1029 AM	9	6.77	18.50	870
1032 AM	12	6.67	19.10	890
1035 AM	sampled			



ENVIRONMENTAL ENGINEERING, INC

Well No.: 50MA-1
 Casing Diameter: 2 inches
 Depth of Well: 29.74 feet
 Top of Casing Elevation: 180.95 feet
 Depth to Groundwater: 10.09 feet
 Groundwater Elevation: 170.86 feet
 Water Column Height: 19.65 feet
 Purged Volume: 12 gallons

Project No.: 2761
 Address: 3519 Castro Valley Blvd
 Castro Valley, CA
 Date: April 17, 2007
 Sampler: Tony Perini

Purging Method: Bailer Pump

Sampling Method: Bailer Pump

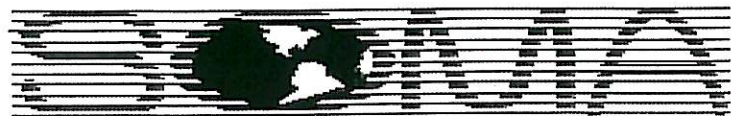
Color: No Yes Describe: cloudy

Sheen: No Yes Describe: _____

Odor: No Yes Describe: _____

Field Measurements:

Time	Vol (gallons)	pH	Temp (°C)	E.C. (µs/cm)
1240 PM	starts purging well			
1243 PM	3	6.87	18.90	1050
1246 PM	6	6.63	18.40	1060
1250 PM	10	6.65	18.20	1070
1253 PM	12	6.61	18.80	1060
1256 PM	sampled			



ENVIRONMENTAL ENGINEERING, INC

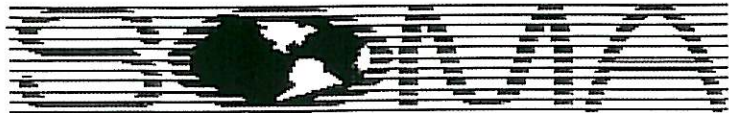
Well No.: Samm-2
 Casing Diameter: 2 inches
 Depth of Well: 14.70 feet
 Top of Casing Elevation: 178.99 feet
 Depth to Groundwater: 11.88 feet
 Groundwater Elevation: 167.11 feet
 Water Column Height: 2.82 feet
 Purged Volume: 1 gallons

Project No.: 2761
 Address: 3519 Castro Valley Blvd
 Castro Valley, CA
 Date: April 17, 2007
 Sampler: Tony Perini

Purging Method: Bailer Pump
 Sampling Method: Bailer Pump
 Color: No Yes Describe: _____
 Sheen: No Yes Describe: _____
 Odor: No Yes Describe: _____

Field Measurements:

Time	Vol (gallons)	pH	Temp (°C)	E.C. (µs/cm)
10 AM	Started purging well			
1001 AM	1	7.25	18.20	790
1003 AM	sampled			



ENVIRONMENTAL ENGINEERING, INC

Well No.: 50MA-3
 Casing Diameter: 2 inches
 Depth of Well: 14.70 feet
 Top of Casing Elevation: 176.81 feet
 Depth to Groundwater: 9.81 feet
 Groundwater Elevation: 167.00 feet
 Water Column Height: 4.89 feet
 Purged Volume: 5 gallons

Project No.: 2761
 Address: 3519 Castro Valley Blvd
 Castro Valley, CA
 Date: April 17, 2007
 Sampler: Tony Perini

Purging Method: Bailer Pump

Sampling Method: Bailer Pump

Color: No Yes Describe: cloudy

Sheen: No Yes Describe: _____

Odor: No Yes Describe: _____

Field Measurements:

Time	Vol (gallons)	pH	Temp (°C)	E.C. (µs/cm)
9:38 AM	started purging well			
9:40 AM	2	7.20	16.70	1180
9:43 AM	5	6.81	18.00	1210
9:45 AM	samples			



ENVIRONMENTAL ENGINEERING, INC

Well No.: SOMA-4 Project No.: 2761
 Casing Diameter: 2 inches Address: 3519 Castro Valley Blvd
 Depth of Well: 22.65 feet Castro Valley, CA
 Top of Casing Elevation: 176.94 feet Date: April 17, 2007
 Depth to Groundwater: 8.96 feet Sampler: Tony Perini
 Groundwater Elevation: 167.98 feet
 Water Column Height: 13.69 feet
 Purged Volume: 8 gallons

Purging Method: Bailer Pump
 Sampling Method: Bailer Pump
 Color: No Yes Describe: cloudy
 Sheen: No Yes Describe: _____
 Odor: No Yes Describe: _____

Field Measurements:

Time	Vol (gallons)	pH	Temp (°C)	E.C. (µs/cm)
9:15 AM	Starts purging well			
9:17 AM	2	6.35	18.10	1150
9:20 AM	5	6.43	18.30	1110
9:23 AM	8	6.44	18.40	1110
9:25 AM	Samples			

Appendix C

Chain of Custody Form and Laboratory Report
for the
Second Quarter 2007 monitoring event

08 May 2007

Mansour Sepehr
SOMA Environmental Engineering Inc.
6620 Owens Drive, Suite A
Pleasanton, CA 94588

RE: 3519 Castro Valley Blvd

Work Order Number: 7040002

This Laboratory report has been reviewed for technical correctness and completeness. This entire report was reviewed and approved by the Laboratory Director or the Director's designee, as verified by the following signature.

Sincerely,



Maiid Akhavan
Laboratory Director



SOMA Environmental Engineering Inc.
6620 Owens Drive, Suite A
Pleasanton CA, 94588

Project: 3519 Castro Valley Blvd
Project Number: 2761
Project Manager: Mansour Sepehr

Reported:
08-May-07 20:34

ANALYTICAL REPORT FOR SAMPLES

Sample ID	Laboratory ID	Matrix	Date Sampled	Date Received
ESE-1	7040002-01	Water	17-Apr-07 13:53	17-Apr-07 15:00
ESE-2	7040002-02	Water	17-Apr-07 13:25	17-Apr-07 15:00
ESE-5	7040002-03	Water	17-Apr-07 11:17	17-Apr-07 15:00
MW-6	7040002-04	Water	17-Apr-07 11:47	17-Apr-07 15:00
MW-7	7040002-05	Water	17-Apr-07 10:35	17-Apr-07 15:00
SOMA-1	7040002-06	Water	17-Apr-07 12:56	17-Apr-07 15:00
SOMA-2	7040002-07	Water	17-Apr-07 10:03	17-Apr-07 15:00
SOMA-3	7040002-08	Water	17-Apr-07 09:45	17-Apr-07 15:00
SOMA-4	7040002-09	Water	17-Apr-07 09:25	17-Apr-07 15:00



SOMA Environmental Engineering Inc.
6620 Owens Drive, Suite A
Pleasanton CA, 94588

Project: 3519 Castro Valley Blvd
Project Number: 2761
Project Manager: Mansour Sepehr

Reported:
08-May-07 20:34

Volatile Organic Compounds by EPA Method 8260B
Pacific Analytical Laboratory

Analyte	Result	Reporting Limit	Units	Dilution	Batch	Prepared	Analyzed	Method	Notes
ESE-1 (7040002-01) Water Sampled: 17-Apr-07 13:53 Received: 17-Apr-07 15:00									
Gasoline (C6-C12)	467	50.0	ug/l	1	BD71901	17-Apr-07	17-Apr-07	EPA 8260B	
Benzene	192	0.500	"	"	"	"	"	"	
Ethylbenzene	13.8	0.500	"	"	"	"	"	"	
m&p-Xylene	9.74	2.00	"	"	"	"	"	"	
o-xylene	6.68	0.500	"	"	"	"	"	"	
Toluene	7.59	2.00	"	"	"	"	"	"	
MTBE	30.4	0.500	"	"	"	"	"	"	
DIPE	ND	0.500	"	"	"	"	"	"	
ETBE	ND	0.500	"	"	"	"	"	"	
TAME	ND	2.00	"	"	"	"	"	"	
TBA	80.5	2.00	"	"	"	"	"	"	
1,2-dichloroethane	ND	0.500	"	"	"	"	"	"	
1,2-Dibromoethane (EDB)	ND	0.500	"	"	"	"	"	"	
Ethanol	ND	1000	"	"	"	"	"	"	
<i>Surrogate: 4-Bromofluorobenzene</i>		100 %	70-130	"	"	"	"	"	
<i>Surrogate: Dibromofluoromethane</i>		99.2 %	70-130	"	"	"	"	"	
<i>Surrogate: Perdeuterotoluene</i>		103 %	70-130	"	"	"	"	"	
ESE-2 (7040002-02) Water Sampled: 17-Apr-07 13:25 Received: 17-Apr-07 15:00									
Gasoline (C6-C12)	ND	50.0	ug/l	1	BD71901	17-Apr-07	17-Apr-07	EPA 8260B	
Benzene	3.17	0.500	"	"	"	"	"	"	
Ethylbenzene	4.49	0.500	"	"	"	"	"	"	
m&p-Xylene	ND	2.00	"	"	"	"	"	"	
o-xylene	ND	0.500	"	"	"	"	"	"	
Toluene	ND	2.00	"	"	"	"	"	"	
MTBE	158	0.500	"	"	"	"	"	"	
DIPE	ND	0.500	"	"	"	"	"	"	
ETBE	ND	0.500	"	"	"	"	"	"	
TAME	3.85	2.00	"	"	"	"	"	"	
TBA	60.8	2.00	"	"	"	"	"	"	
1,2-dichloroethane	ND	0.500	"	"	"	"	"	"	
1,2-Dibromoethane (EDB)	ND	0.500	"	"	"	"	"	"	
Ethanol	ND	1000	"	"	"	"	"	"	
<i>Surrogate: 4-Bromofluorobenzene</i>		87.6 %	70-130	"	"	"	"	"	

Pacific Analytical Laboratory

The results in this report apply to the samples analyzed in accordance with the chain of custody document. This analytical report must be reproduced in its entirety.



SOMA Environmental Engineering Inc.
6620 Owens Drive, Suite A
Pleasanton CA, 94588

Project: 3519 Castro Valley Blvd
Project Number: 2761
Project Manager: Mansour Sepehr

Reported:
08-May-07 20:34

Volatile Organic Compounds by EPA Method 8260B

Pacific Analytical Laboratory

Analyte	Result	Reporting Limit	Units	Dilution	Batch	Prepared	Analyzed	Method	Notes
ESE-2 (7040002-02) Water Sampled: 17-Apr-07 13:25 Received: 17-Apr-07 15:00									
Surrogate: Dibromofluoromethane		105 %	70-130		BD71901	17-Apr-07	17-Apr-07	EPA 8260B	
Surrogate: Perdeuterotoluene		93.2 %	70-130		"	"	"	"	
ESE-5 (7040002-03) Water Sampled: 17-Apr-07 11:17 Received: 17-Apr-07 15:00									
Gasoline (C6-C12)	1240	50.0	ug/l	1	BD71901	17-Apr-07	18-Apr-07	EPA 8260B	
Benzene	10.2	0.500	"	"	"	"	"	"	
Ethylbenzene	10.4	0.500	"	"	"	"	"	"	
m&p-Xylene	ND	2.00	"	"	"	"	"	"	
o-xylene	2.37	0.500	"	"	"	"	"	"	
Toluene	ND	2.00	"	"	"	"	"	"	
MTBE	17.2	0.500	"	"	"	"	"	"	
DIPE	ND	0.500	"	"	"	"	"	"	
ETBE	ND	0.500	"	"	"	"	"	"	
TAME	ND	2.00	"	"	"	"	"	"	
TBA	8.70	2.00	"	"	"	"	"	"	
1,2-dichloroethane	ND	0.500	"	"	"	"	"	"	
1,2-Dibromoethane (EDB)	ND	0.500	"	"	"	"	"	"	
Ethanol	ND	1000	"	"	"	"	"	"	
Surrogate: 4-Bromofluorobenzene		110 %	70-130		"	"	"	"	
Surrogate: Dibromofluoromethane		100 %	70-130		"	"	"	"	
Surrogate: Perdeuterotoluene		104 %	70-130		"	"	"	"	
MW-6 (7040002-04) Water Sampled: 17-Apr-07 11:47 Received: 17-Apr-07 15:00									
Gasoline (C6-C12)	ND	50.0	ug/l	1	BD71901	17-Apr-07	18-Apr-07	EPA 8260B	
Benzene	ND	0.500	"	"	"	"	"	"	
Ethylbenzene	ND	0.500	"	"	"	"	"	"	
m&p-Xylene	ND	2.00	"	"	"	"	"	"	
o-xylene	ND	0.500	"	"	"	"	"	"	
Toluene	ND	2.00	"	"	"	"	"	"	
MTBE	ND	0.500	"	"	"	"	"	"	
DIPE	ND	0.500	"	"	"	"	"	"	
ETBE	ND	0.500	"	"	"	"	"	"	
TAME	ND	2.00	"	"	"	"	"	"	
TBA	ND	2.00	"	"	"	"	"	"	
1,2-dichloroethane	ND	0.500	"	"	"	"	"	"	
1,2-Dibromoethane (EDB)	ND	0.500	"	"	"	"	"	"	
Ethanol	ND	1000	"	"	"	"	"	"	

Pacific Analytical Laboratory

The results in this report apply to the samples analyzed in accordance with the chain of custody document. This analytical report must be reproduced in its entirety.



SOMA Environmental Engineering Inc.
6620 Owens Drive, Suite A
Pleasanton CA, 94588

Project: 3519 Castro Valley Blvd
Project Number: 2761
Project Manager: Mansour Sepehr

Reported:
08-May-07 20:34

Volatile Organic Compounds by EPA Method 8260B

Pacific Analytical Laboratory

Analyte	Result	Reporting Limit	Units	Dilution	Batch	Prepared	Analyzed	Method	Notes
MW-6 (7040002-04) Water Sampled: 17-Apr-07 11:47 Received: 17-Apr-07 15:00									
Surrogate: 4-Bromofluorobenzene		90.6 %	70-130		BD71901	17-Apr-07	18-Apr-07	EPA 8260B	
Surrogate: Dibromofluoromethane		102 %	70-130		"	"	"	"	
Surrogate: Perdeuterotoluene		94.4 %	70-130		"	"	"	"	
MW-7 (7040002-05) Water Sampled: 17-Apr-07 10:35 Received: 17-Apr-07 15:00									
Gasoline (C6-C12)	ND	50.0	ug/l	1	BD71901	17-Apr-07	18-Apr-07	EPA 8260B	
Benzene	ND	0.500	"	"	"	"	"	"	
Ethylbenzene	ND	0.500	"	"	"	"	"	"	
m&p-Xylene	ND	2.00	"	"	"	"	"	"	
o-xylene	ND	0.500	"	"	"	"	"	"	
Toluene	ND	2.00	"	"	"	"	"	"	
MTBE	24.7	0.500	"	"	"	"	"	"	
DIPE	ND	0.500	"	"	"	"	"	"	
ETBE	ND	0.500	"	"	"	"	"	"	
TAME	ND	2.00	"	"	"	"	"	"	
TBA	11.6	2.00	"	"	"	"	"	"	
1,2-dichloroethane	ND	0.500	"	"	"	"	"	"	
1,2-Dibromoethane (EDB)	ND	0.500	"	"	"	"	"	"	
Ethanol	ND	1000	"	"	"	"	"	"	
Surrogate: 4-Bromofluorobenzene		89.0 %	70-130		"	"	"	"	
Surrogate: Dibromofluoromethane		102 %	70-130		"	"	"	"	
Surrogate: Perdeuterotoluene		95.4 %	70-130		"	"	"	"	
SOMA-1 (7040002-06) Water Sampled: 17-Apr-07 12:56 Received: 17-Apr-07 15:00									
Gasoline (C6-C12)	ND	50.0	ug/l	1	BD71901	17-Apr-07	18-Apr-07	EPA 8260B	
Benzene	5.76	0.500	"	"	"	"	"	"	
Ethylbenzene	4.33	0.500	"	"	"	"	"	"	
m&p-Xylene	ND	2.00	"	"	"	"	"	"	
o-xylene	2.59	0.500	"	"	"	"	"	"	
Toluene	ND	2.00	"	"	"	"	"	"	
MTBE	33.4	0.500	"	"	"	"	"	"	
DIPE	ND	0.500	"	"	"	"	"	"	
ETBE	ND	0.500	"	"	"	"	"	"	
TAME	ND	2.00	"	"	"	"	"	"	
TBA	148	2.00	"	"	"	"	"	"	
1,2-dichloroethane	ND	0.500	"	"	"	"	"	"	
1,2-Dibromoethane (EDB)	ND	0.500	"	"	"	"	"	"	

Pacific Analytical Laboratory

The results in this report apply to the samples analyzed in accordance with the chain of custody document. This analytical report must be reproduced in its entirety.



SOMA Environmental Engineering Inc.
6620 Owens Drive, Suite A
Pleasanton CA, 94588

Project: 3519 Castro Valley Blvd
Project Number: 2761
Project Manager: Mansour Sepehr

Reported:
08-May-07 20:34

Volatile Organic Compounds by EPA Method 8260B

Pacific Analytical Laboratory

Analyte	Result	Reporting Limit	Units	Dilution	Batch	Prepared	Analyzed	Method	Notes
SOMA-1 (7040002-06) Water Sampled: 17-Apr-07 12:56 Received: 17-Apr-07 15:00									
Ethanol	ND	1000	ug/l	1	BD71901	17-Apr-07	18-Apr-07	EPA 8260B	
<i>Surrogate: 4-Bromofluorobenzene</i>		89.0 %	70-130		"	"	"	"	
<i>Surrogate: Dibromofluoromethane</i>		104 %	70-130		"	"	"	"	
<i>Surrogate: Perdeuterotoluene</i>		95.0 %	70-130		"	"	"	"	
SOMA-2 (7040002-07) Water Sampled: 17-Apr-07 10:03 Received: 17-Apr-07 15:00									
Gasoline (C6-C12)	ND	50.0	ug/l	1	BD71901	17-Apr-07	18-Apr-07	EPA 8260B	
Benzene	ND	0.500	"	"	"	"	"	"	
Ethylbenzene	ND	0.500	"	"	"	"	"	"	
m&p-Xylene	ND	2.00	"	"	"	"	"	"	
o-xylene	ND	0.500	"	"	"	"	"	"	
Toluene	ND	2.00	"	"	"	"	"	"	
MTBE	0.870	0.500	"	"	"	"	"	"	
DIPE	ND	0.500	"	"	"	"	"	"	
ETBE	ND	0.500	"	"	"	"	"	"	
TAME	ND	2.00	"	"	"	"	"	"	
TBA	14.6	2.00	"	"	"	"	"	"	
1,2-dichloroethane	ND	0.500	"	"	"	"	"	"	
1,2-Dibromoethane (EDB)	ND	0.500	"	"	"	"	"	"	
Ethanol	ND	1000	"	"	"	"	"	"	
<i>Surrogate: 4-Bromofluorobenzene</i>		83.2 %	70-130		"	"	"	"	
<i>Surrogate: Dibromofluoromethane</i>		107 %	70-130		"	"	"	"	
<i>Surrogate: Perdeuterotoluene</i>		92.8 %	70-130		"	"	"	"	
SOMA-3 (7040002-08) Water Sampled: 17-Apr-07 09:45 Received: 17-Apr-07 15:00									
Gasoline (C6-C12)	ND	50.0	ug/l	1	BD71901	17-Apr-07	18-Apr-07	EPA 8260B	
Benzene	ND	0.500	"	"	"	"	"	"	
Ethylbenzene	ND	0.500	"	"	"	"	"	"	
m&p-Xylene	ND	2.00	"	"	"	"	"	"	
o-xylene	ND	0.500	"	"	"	"	"	"	
Toluene	ND	2.00	"	"	"	"	"	"	
MTBE	32.1	0.500	"	"	"	"	"	"	
DIPE	ND	0.500	"	"	"	"	"	"	
ETBE	ND	0.500	"	"	"	"	"	"	
TAME	ND	2.00	"	"	"	"	"	"	
TBA	6.72	2.00	"	"	"	"	"	"	
1,2-dichloroethane	ND	0.500	"	"	"	"	"	"	

Pacific Analytical Laboratory

The results in this report apply to the samples analyzed in accordance with the chain of custody document. This analytical report must be reproduced in its entirety.



SOMA Environmental Engineering Inc.
6620 Owens Drive, Suite A
Pleasanton CA, 94588

Project: 3519 Castro Valley Blvd
Project Number: 2761
Project Manager: Mansour Sepehr

Reported:
08-May-07 20:34

Volatile Organic Compounds by EPA Method 8260B

Pacific Analytical Laboratory

Analyte	Result	Reporting Limit	Units	Dilution	Batch	Prepared	Analyzed	Method	Notes
SOMA-3 (7040002-08) Water Sampled: 17-Apr-07 09:45 Received: 17-Apr-07 15:00									
1,2-Dibromoethane (EDB)	ND	0.500	ug/l	1	BD71901	17-Apr-07	18-Apr-07	EPA 8260B	
Ethanol	ND	1000	"	"	"	"	"	"	
<i>Surrogate: 4-Bromofluorobenzene</i>		82.8 %	70-130	"	"	"	"	"	
<i>Surrogate: Dibromofluoromethane</i>		106 %	70-130	"	"	"	"	"	
<i>Surrogate: Perdeuterotoluene</i>		93.8 %	70-130	"	"	"	"	"	
SOMA-4 (7040002-09) Water Sampled: 17-Apr-07 09:25 Received: 17-Apr-07 15:00									
Gasoline (C6-C12)	ND	50.0	ug/l	1	BD71901	17-Apr-07	18-Apr-07	EPA 8260B	
Benzene	ND	0.500	"	"	"	"	"	"	
Ethylbenzene	4.33	0.500	"	"	"	"	"	"	
m&p-Xylene	ND	2.00	"	"	"	"	"	"	
o-xylene	ND	0.500	"	"	"	"	"	"	
Toluene	ND	2.00	"	"	"	"	"	"	
MTBE	15.8	0.500	"	"	"	"	"	"	
DIPE	ND	0.500	"	"	"	"	"	"	
ETBE	ND	0.500	"	"	"	"	"	"	
TAME	ND	2.00	"	"	"	"	"	"	
TBA	3.98	2.00	"	"	"	"	"	"	
1,2-dichloroethane	ND	0.500	"	"	"	"	"	"	
1,2-Dibromoethane (EDB)	ND	0.500	"	"	"	"	"	"	
Ethanol	ND	1000	"	"	"	"	"	"	
<i>Surrogate: 4-Bromofluorobenzene</i>		87.8 %	70-130	"	"	"	"	"	
<i>Surrogate: Dibromofluoromethane</i>		106 %	70-130	"	"	"	"	"	
<i>Surrogate: Perdeuterotoluene</i>		96.6 %	70-130	"	"	"	"	"	



SOMA Environmental Engineering Inc.
6620 Owens Drive, Suite A
Pleasanton CA, 94588

Project: 3519 Castro Valley Blvd
Project Number: 2761
Project Manager: Mansour Sepehr

Reported:
08-May-07 20:34

Volatile Organic Compounds by EPA Method 8260B - Quality Control
Pacific Analytical Laboratory

Analyte	Result	Reporting Limit	Units	Spike Level	Source Result	%REC	%REC Limits	RPD	RPD Limit	Notes
---------	--------	-----------------	-------	-------------	---------------	------	-------------	-----	-----------	-------

Batch BD71901 - EPA 5030 Water MS

Blank (BD71901-BLK1)

Prepared & Analyzed: 19-Apr-07

Surrogate: 4-Bromofluorobenzene	43.7		ug/l	50.0		87.4	70-130			
Surrogate: Dibromofluoromethane	51.5		"	50.0		103	70-130			
Surrogate: Perdeuterotoluene	46.8		"	50.0		93.6	70-130			
MTBE	ND	0.500	"							
DIPE	ND	0.500	"							
ETBE	ND	0.500	"							
TAME	ND	2.00	"							
Gasoline (C6-C12)	ND	50.0	"							
TBA	ND	2.00	"							
1,2-dichloroethane	ND	0.500	"							
1,2-Dibromoethane (EDB)	ND	0.500	"							
Ethanol	ND	1000	"							
Benzene	ND	0.500	"							
Ethylbenzene	ND	0.500	"							
m&p-Xylene	ND	2.00	"							
o-xylene	ND	0.500	"							
Toluene	ND	2.00	"							

LCS (BD71901-BS1)

Prepared & Analyzed: 19-Apr-07

Surrogate: 4-Bromofluorobenzene	52.8		ug/l	50.0		106	70-130			
Surrogate: Dibromofluoromethane	46.4		"	50.0		92.8	70-130			
Surrogate: Perdeuterotoluene	52.1		"	50.0		104	70-130			
MTBE	96.8	0.500	"	100		96.8	70-130			
ETBE	96.7	0.500	"	100		96.7	70-130			
TAME	107	2.00	"	100		107	70-130			
Gasoline (C6-C12)	1880	50.0	"	2000		94.0	70-130			
TBA	565	2.00	"	500		113	70-130			
Benzene	102	0.500	"	100		102	70-130			
Toluene	112	2.00	"	100		112	70-130			



SOMA Environmental Engineering Inc.
 6620 Owens Drive, Suite A
 Pleasanton CA, 94588

Project: 3519 Castro Valley Blvd
 Project Number: 2761
 Project Manager: Mansour Sepehr

Reported:
 08-May-07 20:34

Volatile Organic Compounds by EPA Method 8260B - Quality Control
Pacific Analytical Laboratory

Analyte	Result	Reporting Limit	Units	Spike Level	Source Result	%REC	%REC Limits	RPD	RPD Limit	Notes
---------	--------	-----------------	-------	-------------	---------------	------	-------------	-----	-----------	-------

Batch BD71901 - EPA 5030 Water MS

LCS Dup (BD71901-BSD1)

Prepared & Analyzed: 19-Apr-07

<i>Surrogate: 4-Bromofluorobenzene</i>	52.1		ug/l	50.0	104		70-130			
<i>Surrogate: Dibromofluoromethane</i>	49.0		"	50.0	98.0		70-130			
<i>Surrogate: Perdeuterotoluene</i>	51.1		"	50.0	102		70-130			
MTBE	113	0.500	"	100	113		70-130	15.4	20	
ETBE	104	0.500	"	100	104		70-130	7.27	20	
TAME	111	2.00	"	100	111		70-130	3.67	20	
TBA	567	2.00	"	500	113		70-130	0.353	20	
Gasoline (C6-C12)	1750	50.0	"	2000	87.5		70-130	7.16	20	
Benzene	101	0.500	"	100	101		70-130	0.985	20	
Toluene	104	2.00	"	100	104		70-130	7.41	20	



SOMA Environmental Engineering Inc.
6620 Owens Drive, Suite A
Pleasanton CA, 94588

Project: 3519 Castro Valley Blvd
Project Number: 2761
Project Manager: Mansour Sepehr

Reported:
08-May-07 20:34

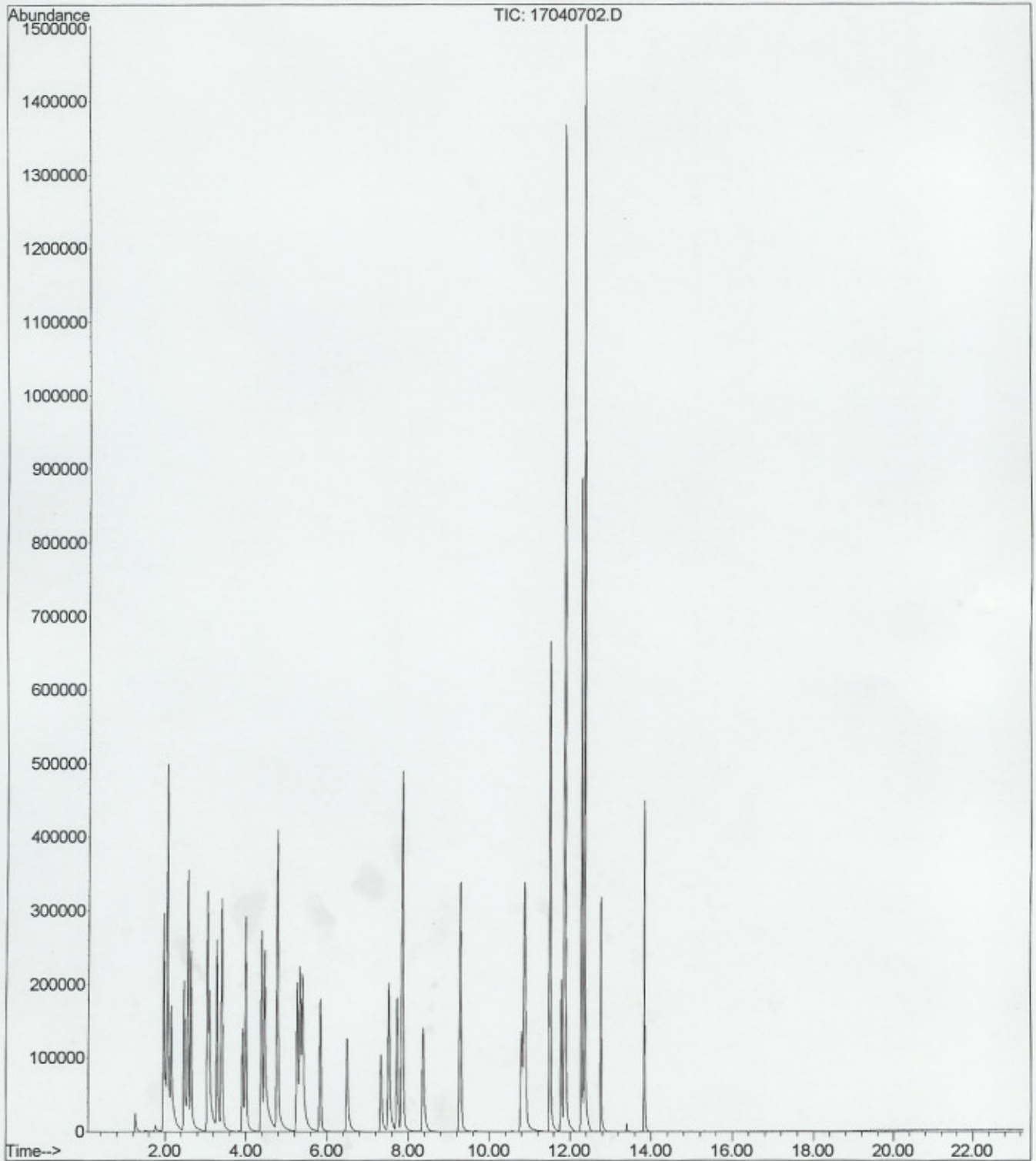
Notes and Definitions

DET Analyte DETECTED
ND Analyte NOT DETECTED at or above the reporting limit
NR Not Reported
dry Sample results reported on a dry weight basis
RPD Relative Percent Difference

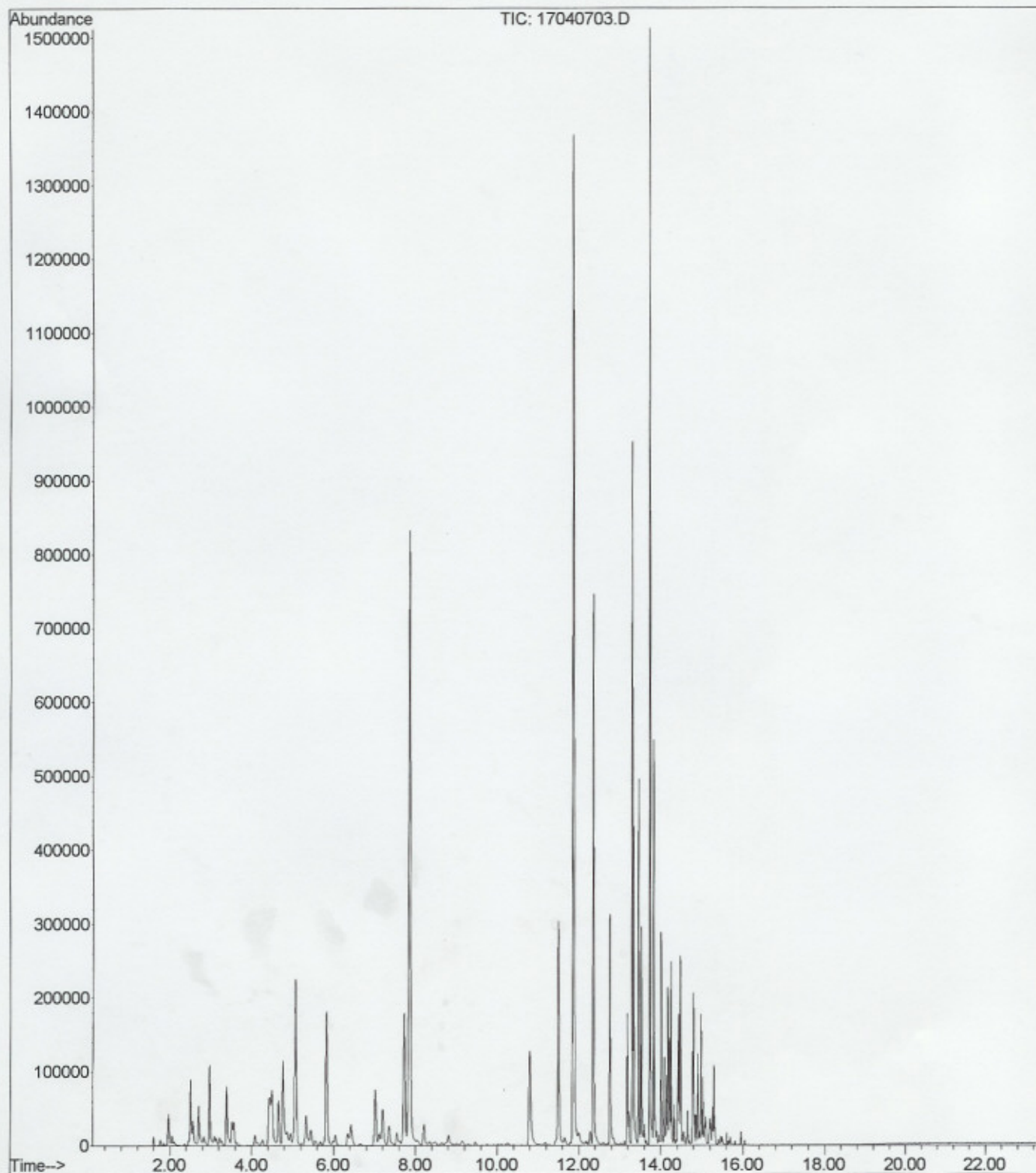
File :C:\MSDChem\1\DATA\2007-Apr-17-1853.b\17040706.D
Operator : MA
Acquired : 17 Apr 2007 9:53 pm using AcqMethod OXY21506.M
Instrument : PAL GCMS
Sample Name: BD71901-BLK1
Misc Info :
Vial Number: 6



File :C:\MSDCHEM\1\DATA\2007-Apr-17-1853.b\17040702.D
Operator : MA
Acquired : 17 Apr 2007 7:43 pm using AcqMethod OXY21506.M
Instrument : PAL GCMS
Sample Name: BD71901-BS1@voc
Misc Info :
Vial Number: 2



File :C:\MSDChem\1\DATA\2007-Apr-17-1853.b\17040703.D
Operator : MA
Acquired : 17 Apr 2007 8:16 pm using AcqMethod OXY21506.M
Instrument : PAL GCMS
Sample Name: BD71901-BS1@gas
Misc Info :
Vial Number: 3



Appendix D

Non-Hazardous Waste Manifest for Groundwater Removal

2

NON-HAZARDOUS WASTE MANIFEST

1. Generator ID Number: CA L 0 0 1 6 2 2 5 1

2. Page 1 of 1

3. Emergency Response Phone: NRCES (510) 749-1390

4. Waste Tracking Number

28447

5. Generator Name and Address

3519 CASTRO VALLEY BLVD.
CASTRO VALLEY CA 94546

5 1 0 8 8 9 - 0 5 7 9

Generator's Site Address (if different than mailing address)

Generator's Phone:

6. Transporter Name: NRC ENVIRONMENTAL SERVICES INC.

U.S. EPA ID Number

CA R 0 0 0 0 3 0 1 1 4

7. Transporter 2 Company Name

U.S. EPA ID Number

8. Designated Facility Name and Address

SIEMENS WATER TECHNOLOGY CORP.
5375 S. BOYLE AVENUE
VERNON CA 90068

3 2 3 2 7 7 - 1 5 0 0

U.S. EPA ID Number

C A D 0 9 8 0 3 0 9 9 3

Facility's Phone:

9a. HM 9b. U.S. DOT Description (including Proper Shipping Name, Hazard Class, ID Number, and Packing Group (if any))

10. Containers

No.

Type

11. Total Quantity

12. Unit WL/Vol.

NONE

1. NON HAZARDOUS WASTE LIQUID (PURGE WATER)

0001

DM

0055

G

13. Special Handling Instructions and Additional Information

1.340611-40

(1XES)

WEAR PROPER PPE
JOB#: 28446 PO#:

14. GENERATOR'S CERTIFICATION: I certify the materials described above on this manifest are not subject to federal regulations for reporting proper disposal of Hazardous Waste.

Generator's/Officer's Printed/Typed Name

MANZO

Signature

[Signature]

Month Day Year

05 03 07

INT'L

15. International Shipments

Import to U.S.

Export from U.S.

Port of entry/exit:

Date leaving U.S.:

Transporter Signature (for exports only):

TRANSPORTER

16. Transporter Acknowledgment of Receipt of Materials

Transporter 1 Printed/Typed Name

Daniel Lanning

Signature

[Signature]

Month Day Year

05 03 07

Transporter 2 Printed/Typed Name

Signature

Month Day Year

DESIGNATED FACILITY

17. Discrepancy

17a. Discrepancy Indication Space

Quantity

Type

Residue

Partial Rejection

Full Rejection

Manifest Reference Number:

U.S. EPA ID Number

17b. Alternate Facility (or Generator)

Facility's Phone:

17c. Signature of Alternate Facility (or Generator)

Month Day Year

18. Designated Facility Owner or Operator: Certification of receipt of hazardous materials covered by the manifest except as noted in Item 17a

Printed/Typed Name

Signature

Month Day Year

Appendix E

Groundwater Monitoring Data and Analytical Results
For Neighboring Service Station at
3495 Castro Valley Blvd, Castro Valley, CA

TABLE 1
WELL MONITORING DATA

Well No.	Date Monitored	Top of Casing Elev. (ft.)	Depth to Water (ft.)	Water Table Elev. (ft.)
MW1	04/17/07	177.37*	8.30	169.07
	01/18/07		7.85	169.52
	11/14/06		7.38	169.99
	06/29/06		7.80	169.57
	02/03/06		6.65	170.72
	11/18/05		8.17	169.20
	07/28/05		7.98	169.39
	04/13/05		6.90	170.47
	01/31/05		7.20	170.17
	10/15/04		8.52	168.85
	07/13/04		8.33	169.04
	04/06/04		7.93	169.44
	12/18/03		7.65	169.72
	09/18/03		8.15	169.22
	06/19/03		8.13	169.24
	03/18/03		7.77	169.60
	12/21/02		5.74	171.63
	9/10/02		8.28	169.09
	3/30/02		7.43	169.94
	12/22/01		6.92	170.45
	9/23/01		8.53	168.84
	6/22/01		8.30	169.07
	4/22/01		7.77	169.60
	12/14/00		8.49	168.88
	9/18/00		8.56	168.81
	6/08/00		7.97	169.40
	3/09/00		6.68	170.69
	12/09/99		8.15	169.22
	8/31/99		8.36	169.01
	4/29/99		7.68	169.69

NOTES:

* = Surveyed on August 20, 1997

TABLE 1
 WELL MONITORING DATA

Well No.	Date Monitored	Top of Casing Elev. (ft.)	Depth to Water (ft.)	Water Table Elev. (ft.)
MW1	1/29/99	177.37*	6.99	170.38
(Continued)	4/26/98		7.50	169.87
	1/24/98		6.61	170.76
	11/06/97		8.79	168.58
	8/26/97	177.37*	8.51	168.86
	7/24/97		8.71	168.72
	4/25/97		7.98	169.45
	1/20/97		7.12	170.31
	7/26/96		8.39	169.04
	7/09/96		8.16	169.27
	4/23/96		7.47	169.96
	2/07/96		6.09	171.34
	1/29/96		6.17	171.26
	10/26/95		8.45	168.98
	7/28/95		8.27	169.16
	5/02/95		6.96	170.47
	2/23/95		7.72	169.71
	11/18/94		7.14	170.29
	8/22/94		8.67	168.76
	5/19/94	177.43**	8.05	169.38
	2/28/94		7.44	169.99
	11/24/93		8.74	168.69
	8/30/93		8.78	168.65
	5/18/93		8.12	169.31
	2/23/93		7.34	170.09
	11/13/92	200.00***	9.13	190.87
	5/29/92	175.73	8.59	167.14
	1/14/92		8.57	167.16
	12/23/91		9.65	166.08
	11/25/91		9.41	166.32
	10/10/91		9.70	166.03
	9/17/91		9.50	166.23
	8/19/91		9.31	166.42

NOTES:

* = Surveyed on August 20, 1997

** = Surveyed on March 24, 1993

*** = Surveyed on December 5, 1992

TABLE 1
 WELL MONITORING DATA

Well No.	Date Monitored	Top of Casing Elev. (ft.)	Depth to Water (ft.)	Water Table Elev. (ft.)
MW2	NOT MEASURED (DESTROYED ON FEBRUARY 7, 1996)			
	2/07/96	176.04**	5.70	170.34
	1/29/96		5.16	170.88
	10/26/95		8.21	167.83
	7/28/95		7.99	168.05
	5/02/95		6.79	169.25
	2/23/95		7.51	168.53
	11/18/94		6.92	169.12
	8/22/94		8.59	167.45
	5/19/94		7.70	168.34
	2/28/94		6.99	169.05
	11/24/93		8.47	167.57
	8/30/93		8.64	167.40
	5/18/93		7.73	168.31
	2/23/93		6.39	169.65
	11/13/92	198.61***	8.70	189.91
	5/29/92	175.45	9.31	166.14
	1/14/92		8.97	166.48
	12/23/91		10.39	165.06
	11/25/91		9.81	165.64
	10/10/91		10.39	165.06
	9/17/91		10.23	165.22
	8/19/91		9.60	165.85

NOTES:

- * = Surveyed on August 20, 1997
- ** = Surveyed on March 24, 1993
- *** = Surveyed on December 5, 1992

TABLE 1
 WELL MONITORING DATA

Well No.	Date Monitored	Top of Casing Elev. (ft.)	Depth to Water (ft.)	Water Table Elev. (ft.)
MW3	04/17/07	176.40*	8.88	167.52
	01/18/07		7.32	169.08
	11/14/06		7.53	168.87
	06/29/06	7.58	168.82	
	02/03/06		6.10	170.30
	11/18/05		7.63	168.77
	07/28/05		7.58	168.82
	04/13/05		6.35	170.05
	01/31/05		6.79	169.61
	10/15/04		8.28	168.12
	07/13/04		8.11	168.29
	04/06/04		7.41	168.99
	12/18/03		6.99	169.41
	09/18/03		7.91	168.49
	06/19/03		7.60	168.80
	03/18/03		7.35	169.05
	12/21/02		5.43	170.97
	9/10/02		7.97	168.43
	3/30/02		6.97	169.43
	12/22/01		6.44	169.96
	9/23/01		8.17	168.23
	6/22/01		8.06	168.34
	4/22/01		7.50	168.90
	12/14/00		8.13	168.27
	9/18/00		7.83	168.57
	9/26/00		7.77	168.63
6/08/00		7.50	168.90	
3/09/00		6.08	170.32	
12/09/99		7.90	168.50	

NOTES:

* = Surveyed on August 20, 1997

** = Surveyed on March 24, 1993

*** = Surveyed on December 5, 1992

TABLE 1
WELL MONITORING DATA

Well No.	Date Monitored	Top of Casing Elev. (ft.)	Depth to Water (ft.)	Water Table Elev. (ft.)
MW3	8/31/99	176.41**	7.95	168.45
(Continued)	4/29/99		7.09	169.31
	1/29/99		6.42	169.98
	4/26/98		6.85	169.55
	1/24/98		5.90	170.50
	11/06/97		7.80	168.80
	8/26/97		7.67	168.93
	7/24/97	176.41**	7.90	168.51
	4/25/97		7.12	169.29
	1/20/97		6.35	170.06
	7/26/96		7.84	169.57
	7/09/96		7.61	168.80
	4/23/96		6.81	169.60
	2/07/96		5.05	170.36
	1/29/96		5.77	170.64
	10/26/95		7.72	168.69
	7/28/95		7.80	168.61
	5/02/95		6.50	169.91
	2/23/95		7.24	169.17
	11/18/94		6.05	170.36
	8/22/94	190.97***	7.65	168.76
	5/19/94		7.15	169.26
	2/24/94		6.68	169.73
	11/24/93		7.55	168.86
	8/30/93		7.64	168.77
	5/18/93		7.12	169.29
	2/23/93		8.01	168.40
	11/13/92		7.86	191.12
	5/29/92	175.00	8.45	166.55
	1/14/92		8.24	166.55
	12/23/91		9.37	165.63
	11/25/91		9.19	165.81
	10/10/91		9.43	165.57
	9/17/91		9.20	165.80
	8/19/91		8.95	166.05

NOTES:

* = Surveyed on August 20, 1997

** = Surveyed on March 24, 1993

*** = Surveyed on December 5, 1992

TABLE 1
WELL MONITORING DATA

Well No.	Date Monitored	Top of Casing Elev. (ft.)	Depth to Water (ft.)	Water Table Elev. (ft.)
MW4	04/17/07	176.35*	7.61 (0.19)#	168.74
	01/18/07		7.20 (0.20)#	169.30
	11/14/06		7.36 (0.25)#	169.18
	06/29/06		Unknown	Unknown
	02/03/06		5.86	170.49
	11/18/05		7.99 (0.51)#	168.36
	07/28/05		7.59	168.76
	04/13/05		6.78 (0.01)#	169.58
	01/31/05		7.34 (0.19)#	169.15
	10/15/04		8.73 (0.15)#	167.73
	07/13/04		8.44 (0.03)#	167.93
	04/06/04		9.58 (2.83)#	168.89
	02/11/04		9.43 (2.70)#	168.95
	12/18/03		9.75 (1.51)#	167.73
	9/18/03		9.13 (1.80)#	168.57
	6/19/03		8.56 (0.31)#	168.02
	3/18/03		7.49 (0.06)#	168.91
	12/21/02		8.58 (4.39)#	171.06
	9/10/02		9.09 (1.60)#	168.46
	3/30/02		9.86 (2.49)#	168.36
	12/22/01		7.79 (1.75)#	169.87
	9/23/01		8.97 (1.17)#	168.26
	6/22/01		7.79	168.56
	4/22/01		9.07 (2.20)#	168.93
	12/14/00		8.87 (0.72)#	168.02
	9/18/00		8.50 (0.45)#	168.19
	6/08/00		7.34	169.01
	3/09/00		6.61 (0.46)#	170.08
	12/09/99		8.80	167.55
	8/31/99		8.28	168.07
	4/29/99		7.14	169.21
	1/29/99		6.68	169.67
	4/26/98		6.87	169.48
	1/24/98		6.61	169.74
	11/06/97		9.16	167.19
	8/26/97		8.92	167.43
	8/20/97		7.66 (prior to development)	

NOTES:

* = Surveyed on August 20, 1997

= Indicates free product thickness in feet. The water table elevation has been corrected for the presence of free product by assuming a free product specific gravity of 0.75.

TABLE 1
WELL MONITORING DATA

Well No.	Date Monitored	Top of Casing Elev. (ft.)	Depth to Water (ft.)
EW1	04/17/07	Not Surveyed	11.35
	01/18/07		6.60
	11/14/06		6.11
	06/29/06		6.88
	02/03/06		5.23
	11/18/05		6.63
	07/28/05		6.94
	04/13/05		5.23
	01/31/05		6.25
	10/15/04		7.65
	07/13/04		7.51
	04/06/04		6.63
	12/18/03		6.72
09/18/03		7.29	

TABLE 1
WELL MONITORING DATA

Well No.	Date Monitored	Top of Casing Elev. (ft.)	Depth to Water (ft.)	Total Well Depth (ft.)
OW1	04/17/07	Not Surveyed	No Water	7.41
	01/18/07		No Water	7.41
	11/14/06		No Water (sheen)	7.41
	06/29/06		7.13	7.42
	02/03/06		6.97	7.45
	11/18/05		7.43 (0.13)#	7.50
	07/28/05		7.06 (0.01)#	7.45
	04/13/05		6.99	7.44
	01/31/05		7.03	7.44
	10/15/04		7.19 (0.08)#	7.44
	07/14/04		7.02	7.44
	04/06/04		7.01	7.44
	02/11/04		7.01	7.44
	10/06/03		7.07 (0.01)#	7.44
	11/02/00		7.12,+	
	12/09/99		7.27	
	01/29/99		7.12	
OW2	04/17/07	Not Surveyed	No Water or Product	7.28
	01/18/07		No Water or Product	7.28
	11/14/06		7.27	7.28
	06/29/06		7.30	7.33
	02/03/06		7.08	7.35
	11/18/05		7.33	7.35
	07/28/05		7.27	7.32
	04/13/05		7.06	7.35
	01/31/05		7.29	7.37
	10/15/04		No Water or Product	7.35
	07/14/04		No Water or Product	7.35
	04/06/04		7.27	7.33
	02/11/04		7.19	7.33
	10/06/03		7.29	7.34
	11/02/00		7.19	
	12/09/99		7.17	
	01/29/99		7.19	

NOTES:

= Indicates free product thickness in feet. The water table elevation has been corrected for the presence of free product by assuming a free product specific gravity of 0.75.

+ = Petroleum hydrocarbon odor reported on probe for water level indicator.

TABLE 2
SUMMARY OF LABORATORY ANALYTICAL RESULTS
Well MW1

Date	TPH-D	TPH-G	MTBE	Benzene	Toluene	Ethyl-benzene	Total Xylenes	Other Fuel Additives by 8260*
04/17/07	6.2, b	23	0.26	0.78	0.32	1.1	2.0	ND<0.025, except TBA ND<0.25
01/18/07	6.4, b	29	ND<1.0	1.8	0.87	1.6	3.3	ND<0.05, except TBA ND<0.5
11/14/06	7.2, b	30	0.44	2.2	0.60	1.8	2.9	ND<0.05, except TBA ND<0.5, Ethanol ND<5.0, Methanol ND<50.0
6/29/06	22, b	45	1.2	3.1	0.94	2.0	3.9	ND<0.05, TBA ND<0.5
02/03/06	9.7, c	37	0.62	2.2	1.2	2.0	3.5	ND<0.05, TBA ND<0.5
11/18/05	4.3, b	25	0.14	1.6	0.43	1.8	2.7	ND<0.05, TBA ND<0.5

NOTES:

TPH-G = Total Petroleum Hydrocarbons as Gasoline.

TPH-D = Total Petroleum Hydrocarbons as Diesel.

MTBE = Methyl tert-Butyl Ether.

ND = Not Detected.

-- = Not Analyzed.

a = Laboratory analytical report note: lighter than water immiscible sheen present on the sample.

b = Laboratory analytical report note: TPH-D results consist of both diesel-range and gasoline-range compounds.

c = Laboratory analytical report note: TPH-D results consist of gasoline-range compounds.

d = Laboratory analytical report note: TPH-D results consist of both oil-range and gasoline-range compounds.

+ = Analyzed by EPA Method 8260.

* = This column summarizes results for analysis using EPA Method 8260 for non-MTBE fuel oxygenates (TAME, DIPE, ETBE, and TBA) or lead scavengers (EDB, 1,2-DCA/EDC).

Results in milligrams per liter (mg/L), unless otherwise indicated.

TABLE 2
SUMMARY OF LABORATORY ANALYTICAL RESULTS
Well MW1 (Continued)

Date	TPH-D	TPH-G	MTBE	Benzene	Toluene	Ethyl- benzene	Total Xylenes	Other Fuel Additives by 8260*
7/28/05	16,a,b	30,a	0.26,+	2.5	0.76	2.1	4.8	ND<0.05, TBA ND<0.5
4/13/05	9.3,b	30	0.3	1.9	0.6	1.7	3	ND<0.05, TBA ND<0.5
1/31/05	14,b	29	0.27	2.2	1.2	1.9	5.0	ND<0.05, TBA ND<0.5
10/15/04	16,a,b	36,a	ND<0.05	1.5	1.0	2.1	5.1	ND<0.05, TBA ND<0.5
7/13/04	22a,b	34,a	0.053	2.1	0.59	2.1	4.4	ND<0.5, TBA ND<0.5
4/6/04	18,a,b	28,a	0.11	2.3	0.8	0.99	4.5	ND<0.1 TBA ND<1
12/18/03	13,b	33	0.038	2.1	0.77	1.8	4.4	ND<0.005 TBA ND<0.05

NOTES:

TPH-G = Total Petroleum Hydrocarbons as Gasoline.

TPH-D = Total Petroleum Hydrocarbons as Diesel.

MTBE = Methyl tert-Butyl Ether.

ND = Not Detected.

-- = Not Analyzed.

a = Laboratory analytical report note: lighter than water immiscible sheen present on the sample.

b = Laboratory analytical report note: TPH-D results consist of both diesel-range and gasoline-range compounds.

c = Laboratory analytical report note: TPH-D results consist of gasoline-range compounds.

d = Laboratory analytical report note: TPH-D results consist of both oil-range and gasoline-range compounds.

+ = Analyzed by EPA Method 8260.

* = This column summarizes results for analysis using EPA Method 8260 for non-MTBE fuel oxygenates (TAME, DIPE, ETBE, and TBA) or lead scavengers (EDB, 1,2-DCA/EDC).

Results in milligrams per liter (mg/L), unless otherwise indicated.

TABLE 2
SUMMARY OF LABORATORY ANALYTICAL RESULTS
Well MW1 (Continued)

Date	TPH-D	TPH-G	MTBE	Benzene	Toluene	Ethyl- benzene	Total Xylenes	Other Fuel Additives by 8260* , TBA ND<0.17
9/18/03	15,a,b	32	0.052	2.2	0.62	1.8	3.8	ND<0.017
6/26/03	67,a,b	45	ND<0.05	2.1	0.72	2.3	5.5	ND
3/18/03	7.3,a,b	33	ND<0.05	2.4	0.9	1.6	1.0	ND
12/21/02	11,a,b	32	ND<0.1	2.6	0.98	2.2	5.5	ND
9/10/02	18,c	31	ND<0.25	2.2	0.65	1.7	4.8	--
3/30/02	12,a,b	99	ND	4.1	1.2	2.5	6.4	--
12/22/01	22,a,b	60	ND	3.2	1.9	2	6.2	--
9/23/01	16,a,c	49	ND	4	1.4	2.2	6.2	--
6/22/01	85,a,b	35	ND	3.1	0.75	1.2	4.0	--
4/22/01	16,a	43	ND	3.6	1.2	1.6	5.8	--
12/14/00	11,a,d	49	ND	5.8	1.6	2	6.9	--
9/18/00	15,a,b	86	ND	7.2	2	3.2	13	--
6/8/00	6.5,a,c	50	ND	5.7	1.5	1.8	7	--
3/9/00	7.4,a,b	48	ND	5.3	3.1	1.6	8.1	--
12/9/99	12,a,b	65	ND	9.3	2.9	2.2	8.8	--
8/31/99	22,b	66	0.71	8.7	2.7	2.4	10	--
4/29/99	22,b	48	ND	8.4	2.8	2.0	8.1	--
1/29/99	9.1,b	47	ND	9.0	2.9	1.9	8.0	--
4/26/98	7.8,c	60	ND	9.3	5.7	2.1	9.1	--
1/24/98	24,b	57	ND	6.9	5.5	2.0	8.7	--
11/6/97	17,c	63	ND	7.4	6.7	2.3	9.9	--
7/27/97	28,c	66	1.8	8.6	8.1	2.2	10	--
4/25/97	170,b	77	ND	7.4	7.9	2.1	9.8	--
1/21/97	57,c	80	0.25	7.8	8.3	1.9	8.9	--
7/26/96	11,c	76	ND	11	13	2.4	10	--
4/23/96	5.7,c	73	ND	8.6	12	2.2	9.8	--
1/29/96	6.6,c	81	0.25	7.6	13	1.9	8.9	--
10/26/95	62,c	89	ND	7.8	12	2.4	11	--

NOTES:

TPH-G = Total Petroleum Hydrocarbons as Gasoline.

TPH-D = Total Petroleum Hydrocarbons as Diesel.

MTBE = Methyl tert-Butyl Ether.

ND = Not Detected.

-- = Not Analyzed.

a = Laboratory analytical report note: lighter than water immiscible sheen present on the sample.

b = Laboratory analytical report note: TPH-D results consist of both diesel-range and gasoline-range compounds.

c = Laboratory analytical report note: TPH-D results consist of gasoline-range compounds.

d = Laboratory analytical report note: TPH-D results consist of both oil-range and gasoline-range compounds.

* = This column summarizes results for analysis using EPA Method 8260 f

Results in milligrams per liter (mg/L), unless otherwise indicated.

TABLE 2
SUMMARY OF LABORATORY ANALYTICAL RESULTS
Well MW1 (Continued)

Date	TPH-D	TPH-G	MTBE	Benzene	Toluene	Ethyl- benzene	Total Xylenes	Other Fuel Additives by 8260*
7/28/95	2.0,c	35	--	3.8	8.7	1.1	6.5	--
5/2/95	6.5,c	86	--	8.9	14	2.3	11	--
2/24/95	9.1	90	--	7.5	12	1.5	11	--
11/18/94	10	96	--	9.3	14	2.5	11	--
8/22/94	8.3	100	--	9.0	11	2.1	9.4	--
5/19/94	30	100	--	12	14	3.5	17	--
2/28/94	110	90	--	11	9.6	2.1	9.9	--
11/24/93	8.2	66	--	8.3	8.9	2.0	121	--
8/30/93	9.4	77	--	6.4	11	2.2	12	--
5/18/93	30	92	--	4.0	11	2.5	15	--
2/23/93	14	100	--	4.5	11	2.1	12	--
11/13/92	4.4	120	--	5.8	10	2.1	13	--
5/27/92	11	120	--	8.8	16	2.3	15	--
1/24/92	19	39	--	7.3	8.7	1.3	8.9	--
12/23/91	34	78	--	9.3	7.3	0.54	13	--
11/25/91	36	170	--	5.5	5.6	1.6	8.4	--
10/10/91	19	28	--	4.1	4.7	1.0	4.8	--
9/17/91	19	39	--	4.9	4.1	1.2	5.9	--
8/19/91	47	48	--	13	8.4	0.99	29	--
7/20/91	49	100	--	11	14	2.3	17	--
6/20/91	42	76	--	4.7	7.1	1.5	9.8	--
5/17/91	26	72	--	7.7	9.9	ND	11	--
4/15/91	--	56	--	6.5	8.5	0.41	9.9	--
3/21/91	--	36	--	4.5	5.7	0.087	7.3	--
2/15/91	--	120	--	7.4	6.6	ND	13	--
1/15/91	--	33	--	3.9	2.9	0.21	5.3	--
9/27/90	--	28	--	3.7	3.5	0.01	6.5	--
8/23/90	--	40	--	5.1	4.9	0.35	6.0	--
7/20/90	44	--	--	5.1	4.2	ND	9.1	--
3/19/90	--	40	--	3.7	1.1	ND	3.3	--
2/20/90**	--	7.6	--	1.6	ND	ND	1.3	--

NOTES:

TPH-G = Total Petroleum Hydrocarbons as Gasoline.

TPH-D = Total Petroleum Hydrocarbons as Diesel.

MTBE = Methyl tert-Butyl Ether.

ND = Not Detected.

-- = Not Analyzed.

b = Laboratory analytical report note: TPH-D results consist of both diesel-range and gasoline-range compounds.

c = Laboratory analytical report note: TPH-D results consist of gasoline-range compounds.

* = This column summarizes results for analysis using EPA Method 8260 for non-MTBE fuel oxygenates (TAME, DIPE, ETBE, and TBA) or lead scavengers (EDB, 1,2-DCA/EDC).

** Inorganic lead not detected in sample.

Results in milligrams per liter (mg/L), unless otherwise indicated.

TABLE 2
SUMMARY OF LABORATORY ANALYTICAL RESULTS
Well MW2

Date	TPH-D	TPH-G	MTBE	Benzene	Toluene	Ethyl- benzene	Total Xylenes	Other Fuel Additives by 8260*
2/7/96				MW2 Destroyed				
1/29/96	4.6,c	38	0.0071	1.9	5.7	1.1	5.9	--
10/26/95	900	74	ND	2.9	5.9	2.0	10	--
7/28/95	2.0,c	15	--	1.4	2.3	0.62	3.2	--
5/2/95	6.6,b	55	--	3.3	10	1.8	10	--
2/24/95	22	67	--	4.9	11	1.8	11	--
11/18/94	5.0	86	--	11	17	1.8	12	--
8/22/94	4.1	91	--	10	13	1.5	9.0	--
5/19/94	5.8	62	--	92	13	1.3	8.4	--
2/28/94	13	91	--	13	16	1.5	9.0	--
11/24/93	79	12	--	13	17	2.5	17	--
8/30/93	110	110	--	11	14	1.8	11	--
5/18/93	44	67	--	9.2	12	1.4	9.3	--
2/23/93	7.0	76	--	12	17	1.6	9.6	--
11/13/92	8.2	79	--	10	13	1.4	8.6	--
5/27/92	130	89	--	18	19	1.7	14	--
1/14/92	1600	59	--	17	14	1.8	15	--
12/23/91	700	2100	--	36	130	79	560	--
11/25/91	130	230	--	11	9.7	1.4	9.7	--
10/10/91	360	85	--	21	25	2.1	14	--
9/17/91	56	74	--	10	11	1.4	8.1	--
8/19/91	19	69	--	26	22	2.1	18	--
7/20/91	100	51	--	9.9	7.7	1.2	7.5	--
6/20/91	69	87	--	8.1	8.4	1.1	8.9	--
5/17/91	33	62	--	5.9	6.3	1.2	9.0	--
4/15/91	--	82	--	5.3	7.4	1.0	9.4	--
3/21/91	--	62	--	9.3	11	0.35	9.7	--
2/15/91	--	200	--	12	12	1.7	14	--
1/14/91	--	78	--	11	8.7	0.58	8.0	--
9/27/90	--	59	--	8.4	12	0.88	9.0	--
8/23/90	--	96	--	8.1	8.4	1.5	8.6	--
7/20/90	86	--	--	9.1	14	0.94	13	--
3/19/90	--	50	--	7.7	8.7	0.075	5.6	--
2/20/90**	--	38	--	7.3	3.1	0.075	6.8	--

NOTES:

TPH-G = Total Petroleum Hydrocarbons as Gasoline.

TPH-D = Total Petroleum Hydrocarbons as Diesel.

MTBE = Methyl tert-Butyl Ether.

ND = Not Detected.

-- = Not Analyzed.

b = Laboratory analytical report note: TPH-D results consist of both diesel-range and gasoline-range compounds.

c = Laboratory analytical report note: TPH-D results consist of gasoline-range compounds.

* = This column summarizes results for analysis using EPA Method 8260 for non-MTBE fuel oxygenates (TAME, DIPE, ETBE, and TBA) or lead scavengers (EDB, 1,2-DCA/EDC).

** Inorganic lead not detected in sample.

Results in milligrams per liter (mg/L), unless otherwise indicated.

TABLE 2
SUMMARY OF LABORATORY ANALYTICAL RESULTS
Well MW3

Date	TPH-D	TPH-G	MTBE	Benzene	Toluene	Ethyl- benzene	Total Xylenes	Other Fuel Additives by 8260*
04/17/07	7.9, a, b	92, a	14	23	ND<0.5	1.5	5.9	ND<0.5, except TBA = 8.0
01/18/07	6.4, b	94	22	29	1.3	2.1	9.6	ND<0.5, except TBA = 12
11/14/06	21, a, b	100, a	23	37	1.0	2.2	11	ND<0.5 except, TBA= 16, Ethanol ND<5.0, Methanol ND<50.0
6/29/06	12,b	36	27	14	ND<0.5	ND<0.5	ND<0.5	ND<0.5, except TBA = 11
02/03/06	22,b	86	24	26	ND<0.5	1.7	6	ND<0.5, except TBA = 11
11/18/05	32,a,b	87,a	22	35	ND<1	2	11	ND<1.0, except TBA ND<10
7/28/05	77,a,b	100,a	32,+	30	1.1	2.3	12	ND<0.5, except TBA = 13
4/13/05	19,a,b	96,a	28	31	4	2.3	12	ND<0.5, except TBA = 12
1/31/05	13,a,b	93,a	31	36	1.5	2.5	11	ND<1, except TBA = 24
10/15/04	13,a,b	76,a	24	28	ND<0.5	1.1	3.6	ND<0.5, except TBA = 18
7/13/04	57,a,b	98,a	15	28	2.9	1.7	8.9	ND<0.5, except TBA = 11
4/6/04	32,a,b	81,a	17	34	5.9	1.5	9.9	ND<0.5, except TBA = 8.8
12/18/03	32,a,b	130,a	32	33	5.4	0.72	11	ND<0.5, except TBA = 17

NOTES:

TPH-G = Total Petroleum Hydrocarbons as Gasoline.

TPH-D = Total Petroleum Hydrocarbons as Diesel.

MTBE = Methyl tert-Butyl Ether.

ND = Not Detected.

-- = Not Analyzed.

a = Laboratory analytical report note: lighter than water immiscible sheen present on the sample.

b = Laboratory analytical report note: TPH-D results consist of both diesel-range and gasoline-range compounds

+ = Analyzed by EPA Method 8260.

* = This column summarizes results for analysis using EPA Method 8260 for non-MTBE fuel oxygenates (TAME, DIPE, ETBE, and TBA) or lead scavengers (EDB, 1,2-DCA/EDC).

Results in milligrams per liter (mg/L), unless otherwise indicated.

TABLE 2
SUMMARY OF LABORATORY ANALYTICAL RESULTS
Well MW3 (Continued)

Date	TPH-D	TPH-G	MTBE	Benzene	Toluene	Ethyl- benzene	Total Xylenes	Other Fuel Additives by 8260*
9/18/03	140,a,b	130	23	34	11	2.5	14	ND<0.5, except TBA = 10
6/26/03	27,a,b	96	21	29	5.2	2.0	10	ND, except TBA = 8.9
3/18/03	11,a,b	120	16	36	12	1.8	2.4	ND, except TBA = 5.1
12/21/02	21,a,b	110	33	34	9.3	2.0	13	ND, except TBA = 14
9/10/02	43,b	70	19	21	2.2	1.6	7.6	--
3/30/02	8.5,a,b	170	26	40	17	2.6	16	--
12/22/01	9.2,a,b	140	27	37	20	2.6	15	--
9/23/01	47,a,b	130	26	32	9.1	2.4	12	--
6/22/01	33,a,b	110	25	31	7.2	1.9	11	--
4/22/01	61,a	140	24	25	5.4	1.7	11	--
12/14/00	120,a,b	140	35	37	16	2.4	15	--
9/18/00	43,a,b	130	33	39	91	2.3	14	--
7/26/00	--	--	21	--	--	--	--	ND***, except tert-butanol = 19
6/8/00	74,a,b	130	23	41	16	1.9	13	--
3/9/00	14,a,b	180	24	39	22	2.5	16	--
12/9/99	17,a,b	120	16	35	6.7	2.4	12	--
8/31/99	22,b	120	4.7	35	3.7	2.4	14	--
4/29/99	48,b	100	2.5	33	8.0	2.1	14	--
1/29/99	240,b	84	1.3	31	2.8	1.8	12	--
4/26/98	380,b	100	9.7	29	7.1	1.8	14	--
1/24/98	77,b	97	ND	28	7.1	1.8	11	--
11/6/97	120,b	140	ND	37	19	2.4	14	--
7/24/97	91,c	120	1.4	33	17	2.2	12	--
4/25/97	760,b	240	1.6	24	18	4.1	24	--
1/21/97	34,c	150	1.3	40	14	2.6	12	--
7/26/96	24,c	130	0.89	40	22	2.4	12	--

NOTES:

TPH-G = Total Petroleum Hydrocarbons as Gasoline.

TPH-D = Total Petroleum Hydrocarbons as Diesel.

MTBE = Methyl tert-Butyl Ether.

ND = Not Detected.

-- = Not Analyzed.

a = Laboratory analytical report note: lighter than water immiscible sheen present on the sample.

b = Laboratory analytical report note: TPH-D results consist of both diesel-range and gasoline-range compounds.

c = Laboratory analytical report note: TPH-D results consist of gasoline-range compounds.

* = This column summarizes results for analysis using EPA Method 8260 for non-MTBE fuel oxygenates (TAME, DIPE, ETBE, and TBA) or lead scavengers (EDB, 1,2-DCA/EDC).

***Review of laboratory analytical reports indicate that oxygenated volatile organic compounds (including TAME, DIPE, ETBE, methanol, ethanol, EDB, and 1,2-DCA) were not detected except MTBE at 21 ppm and tert-butanol at 19 ppm.

Results in milligrams per liter (mg/L), unless otherwise indicated.

TABLE 2
SUMMARY OF LABORATORY ANALYTICAL RESULTS
Well MW3 (Continued)

Date	TPH-D	TPH-G	MTBE	Benzene	Toluene	Ethyl- benzene	Total Xylenes	Other Fuel Additives by 8260*
4/23/96	280,c	170	0.72	34	22	2.2	14	--
1/29/96	45,c	150	0.54	32	21	1.9	12	--
10/26/95	33	130	0.69	37	21	0.21	11	--
7/28/95	1.9,b	86	--	1.4	2.3	0.62	3.2	--
5/2/95	9.7,b	170	--	43	30	2.5	14	--
2/24/95	9.2	130	--	31	19	1.8	10	--
11/18/94	23	140	--	38	22	2.0	11	--
7/22/94	5.3	170	--	35	20	1.8	10	--
5/19/94	30	150	--	38	25	2.4	14	--
2/28/94	210	110	--	36	21	1.9	11	--
11/24/93	24	160	--	48	26	2.2	12	--
7/30/93	32	130	--	36	21	1.9	8.2	--
5/18/93	7.2	130	--	36	21	2.1	12	--
2/23/93	8.1	110	--	31	18	1.9	11	--
11/13/92	4.7	140	--	38	24	2.0	12	--
5/27/92	27	370	--	91	57	3.0	21	--
7/14/92	270	130	--	76	30	3.4	21	--
12/23/91	540	740	--	30	61	31	180	--
11/25/91	74	150	--	65	31	3.4	18	--
10/10/91	39	140	--	57	31	2.2	14	--
9/17/91	140	180	--	47	25	2.6	15	--
8/19/91	150	170	--	82	31	4.4	22	--
7/20/91	270	450	--	46	29	3.5	21	--
6/20/91	210	920	--	39	49	13	69	--
5/17/91	70	170	--	32	22	2.2	18	--
4/15/91	--	110	--	31	15	0.88	7.4	--
3/21/91	--	87	--	30	14	0.69	5.4	--
2/15/91	--	230	--	44	40	ND	31	--
1/14/91	--	160	--	48	25	1.0	16	--
9/27/90	--	25	--	7.2	6.4	0.42	3.4	--
8/23/90	--	220	--	67	46	27	18	--
7/20/90	86	--	--	9.1	14	0.94	13	--
3/19/90	--	210	--	38	28	1.8	12	--
2/20/90**	--	46	--	20	15	1.8	9.7	--

NOTES:

TPH-G = Total Petroleum Hydrocarbons as Gasoline.

TPH-D = Total Petroleum Hydrocarbons as Diesel.

MTBE = Methyl tert-Butyl Ether.

ND = Not Detected.

-- = Not Analyzed.

b = Laboratory analytical report note: TPH-D results consist of both diesel-range and gasoline-range compounds.

c = Laboratory analytical report note: TPH-D results consist of gasoline-range compounds.

* = This column summarizes results for analysis using EPA Method 8260 for non-MTBE fuel oxygenates (TAME, DIPE, ETBE, and TBA) or lead scavengers (EDB, 1,2-DCA/EDC).

** Inorganic lead not detected in sample.

Results in milligrams per liter (mg/L), unless otherwise indicated.

TABLE 2
 SUMMARY OF LABORATORY ANALYTICAL RESULTS
 Well MW4

Date	TPH-D	TPH-G	MTBE	Benzene	Toluene	Ethyl- benzene	Total Xylenes	Other Fuel Additives by 8260*
04/17/07			Not Sampled (Free Product Present in Well)					
01/18/07			Not Sampled (Free Product Present in Well)					
11/14/06			Not Sampled (Free Product Present in Well)					
6/29/06	83,a,b	140,a	31	44	13	2.6	19	ND<1.0, except TBA = ND<10
2/3/06	83,a,b	150,a	22	35	12	3.2	14	ND<0.5, except TBA = 7
11/18/05			Not Sampled (Free Product Present in Well)					ND<0.5, except
7/28/05	94,a,b	130,a	27,+	32	8.9	2.9	14	TBA = 8.4

NOTES:

TPH-G = Total Petroleum Hydrocarbons as Gasoline.

TPH-D = Total Petroleum Hydrocarbons as Diesel.

MTBE = Methyl tert-Butyl Ether.

ND = Not Detected.

a = Laboratory analytical report note: lighter than water immiscible sheen present on the sample.

b = Laboratory analytical report note: TPH-D results consist of both diesel-range and gasoline-range compounds.

+ = Analyzed by EPA Method 8260.

* = This column summarizes results for analysis using EPA Method 8260 for non-MTBE fuel oxygenates (TAME, DIPE, ETBE, and TBA) or lead scavengers (EDB, 1,2-DCA/EDC).

Results in milligrams per liter (mg/L), unless otherwise indicated.

TABLE 2
SUMMARY OF LABORATORY ANALYTICAL RESULTS
Well MW4 (Continued)

Date	TPH-D	TPH-G	MTBE	Benzene	Toluene	Ethyl- benzene	Total Xylenes	Other Fuel Additives by 8260*
4/13/05			Not Sampled (Free Product Present in Well)					
1/31/05			Not Sampled (Free Product Present in Well)					
10/15/04			Not Sampled (Free Product Present in Well)					
7/13/04			Not Sampled (Free Product Present in Well)					
2/11/04	Free Product sampled. Laboratory fuel fingerprint notes a pattern resembling diesel, with a less significant gasoline-range pattern.							
12/18/03			Not Sampled (Free Product Present in Well)					
9/18/03			Not Sampled (Free Product Present in Well)					
6/26/03			Not Sampled (Free Product Present in Well)					
3/18/03			Not Sampled (Free Product Present in Well)					
12/21/02			Not Sampled (Free Product Present in Well)					
9/10/02			Not Sampled (Free Product Present in Well)					
3/30/02			Not Sampled (Free Product Present in Well)					
12/22/01			Not Sampled (Free Product Present in Well)					
9/23/01			Not Sampled (Free Product Present in Well)					
6/22/01	440,a,b	140	15	35	19	2.0	10	--
4/22/01			Not Sampled (Free Product Present in Well)					
12/14/00			Not Sampled (Free Product Present in Well)					
9/18/00			Not Sampled (Free Product Present in Well)					
6/8/00			Not Sampled (Free Product Present in Well)					
3/9/00	2,100,a,b	130	6.9	35	13	2.1	11	--
12/9/99	9,000,a,b	120	8.1	33	6	2.4	12	--
8/31/99	9.4,b	190	4.4	46	30	2.8	15	--
4/29/99	9.4,b	210	3.2	42	35	2.8	15	--
1/29/99	7.3,b	190	2.4	44	40	3.1	17	--
4/26/98	13,b	190	ND	49	37	3.2	18	--
1/24/98	20,b	200	ND	50	40	3.1	17	--
11/6/97	110,b	160	ND	48	30	2.8	16	--
8/26/97	5.5,b	210	1.7	48	42	3.4	19	--
8/15/97			MW4 Installed					

NOTES:

TPH-G = Total Petroleum Hydrocarbons as Gasoline.

TPH-D = Total Petroleum Hydrocarbons as Diesel.

MTBE = Methyl tert-Butyl Ether.

ND = Not Detected.

-- = Not Analyzed.

a = Laboratory analytical report note: lighter than water immiscible sheen present on the sample.

b = Laboratory analytical report note: TPH-D results consist of both diesel-range and gasoline-range compounds.

+ = Analyzed by EPA Method 8260.

* = This column summarizes results for analysis using EPA Method 8260 for non-MTBE fuel oxygenates (TAME, DIPE, ETBE, and TBA) or lead scavengers (EDB, 1,2-DCA/EDC).

Results in milligrams per liter (mg/L), unless otherwise indicated.

TABLE 2
SUMMARY OF LABORATORY ANALYTICAL RESULTS
Well EW1

Date	TPH-D	TPH-G	MTBE	Benzene	Toluene	Ethyl-benzene	Total Xylenes	Other Fuel Additives by 8260*
04/17/07	5.8, b	21	9.6	3.7	1.4	0.49	1.6	ND<0.1, except TBA = 18
01/18/07	0.93, b	0.93, d	0.60	0.0034	0.0050	ND< 0.0005	0.0041	ND< 0.050, except TBA= 6.8
11/14/06	1.8, b	0.87, d	0.17	ND<0.025	ND<0.025	ND<0.025	ND<0.025	ND<0.025, except TBA= 5.9, Ethanol ND<2.5, Methanol ND<25.0
6/29/06	0.71,b	0.29	0.021	ND<0.01	ND<0.01	ND<0.01	ND<0.01	ND<0.01, Except TBA = 2.0
2/3/06	1.2,b	0.79	3.1	ND<0.05	ND<0.05	ND<0.05	ND<0.05	ND<0.05, Except TBA = 13

NOTES:

TPH-G = Total Petroleum Hydrocarbons as Gasoline.

TPH-D = Total Petroleum Hydrocarbons as Diesel.

MTBE = Methyl tert-Butyl Ether.

ND = Not Detected.

-- = Not Analyzed.

+ = Analyzed by EPA Method 8260.

a = Laboratory analytical report note: lighter than water immiscible sheen present on the sample.

b = Laboratory analytical report note: TPH-D results consist of both diesel-range and gasoline-range compounds.

c = Laboratory analytical report note: TPH-D results consist of gasoline-range compounds.

d = Laboratory analytical report note: no recognizable pattern.

* = This column summarizes results for analysis using EPA Method 8260 for non-MTBE fuel oxygenates (TAME, DIPE, ETBE, and TBA) or lead scavengers (EDB, 1,2-DCA/EDC).

Results in milligrams per liter (mg/L), unless otherwise indicated.

TABLE 2
SUMMARY OF LABORATORY ANALYTICAL RESULTS
Well EW1 (Continued)

Date	TPH-D	TPH-G	MTBE	Benzene	Toluene	Ethyl- benzene	Total Xylenes	Other Fuel Additives by 8260*	
11/18/05	1.2,a	0.9	2	ND<0.05	ND<0.05	ND<0.05	ND<0.05	ND<0.05, Except TBA = 18	
7/28/05	1.8,b	1.2	17,+	0.033	0.0051	0.00056	0.0059	ND<0.25, except TBA = 22	
4/13/05	2.2,b	0.38	2.7	ND<0.05	ND<0.05	ND<0.05	ND<0.05	ND<0.05, except TBA = 1.6	
1/31/05	3.4,b	1.9	38	ND<1	ND<1	ND<1	ND<1	ND<1, except TBA = 32	
10/15/04	4.1,a,b	ND<5.0,a,e	96	ND<1.7	ND<1.7	ND<1.7	ND<1.7	ND<1.7, except TBA = 97	
7/13/04	3.3,a,b	2.6,a	73	ND<1.2	ND<1.2	ND<1.2	ND<1.2	ND<1.2, except TBA = 40	
4/6/04	3.4,a,b	2.6,a	72	ND<1	ND<1	ND<1	ND<1	ND<1, except TBA = 34	
12/18/03	3.0,b	ND<5.0,e	160	0.22	ND<50	ND<50	0.073	ND<5, except TBA = 64	
9/18/03	8.2,a,b	7.5	220	0.33	ND<0.05	ND<0.05	ND<0.05	ND<2.5, except TBA = 51	
2/23/93	9.6	66	--	14	8.5	1.4	9.8	--	
11/13/92	13	62	--	11	9.2	1.1	9.6	--	
8/92				EW1 Installed					

NOTES:

TPH-G = Total Petroleum Hydrocarbons as Gasoline.

TPH-D = Total Petroleum Hydrocarbons as Diesel.

MTBE = Methyl tert-Butyl Ether.

ND = Not Detected.

-- = Not Analyzed.

+ = Analyzed by EPA Method 8260.

a = Laboratory analytical report note: lighter than water immiscible sheen present on the sample.

b = Laboratory analytical report note: TPH-D results consist of both diesel-range and gasoline-range compounds.

e = Laboratory analytical report note: reporting limit raised due to high MTBE content

* = This column summarizes results for analysis using EPA Method 8260 for non-MTBE fuel oxygenates (TAME, DIPE, ETBE, and TBA) or lead scavengers (EDB, 1,2-DCA/EDC).

Results in milligrams per liter (mg/L), unless otherwise indicated.

TABLE 2
SUMMARY OF LABORATORY ANALYTICAL RESULTS
Well OW1

Date	TPH-D	TPH-G	TPH-MO	Benzene	Toluene	Ethyl- benzene	Total Xylenes	Other Fuel Additives by 8260, including MTBE**
04/17/07				No sample recovered				
01/18/07				No sample recovered				
11/14/06				No sample recovered				
6/29/06	290,b	24	--	--	--	--	--	--
2/3/06	710a,g	31,a	210	--	--	--	--	--
11/18/05	820,b	370	--	0.13	ND<0.025	0.4	0.29	ND<0.025 TBA<0.25
7/28/05	230,a,b	10,a	--	1.3	0.03	0.19	0.072	ND<0.05, TBA ND<0.5
4/13/05	590a,b,d	35,a	--	2	ND<0.05	0.46	0.14	ND<0.05, TBA ND<0.5
1/31/05				No sample recovered				
10/15/04				No sample recovered				
7/14/04	240,a,b	66,a	ND<0.05	1.8	ND<0.05	1.8	0.056	ND<0.05, TBA ND<0.5
4/6/04	74,a,b	50,a	--	3.1	ND<0.1	0.21	0.14	ND<0.1, TBA ND<1
2/11/04	450,a,b	15,a	130	2.2	0.031	0.16	0.054	ND<0.025, TBA ND<0.25
11/21/03	1,900,a,b	38,f	570	2.0	0.059	0.19	0.095	ND<0.05, TBA ND<0.5
6/10/98				OW1 Installed				

NOTES:

TPH-G = Total Petroleum Hydrocarbons as Gasoline.

TPH-D = Total Petroleum Hydrocarbons as Diesel.

MTBE = Methyl tert-Butyl Ether.

ND = Not Detected.

-- = Not Analyzed.

a = Laboratory analytical report note: lighter than water immiscible sheen present on the sample.

b = Laboratory analytical report note: TPH-D results consist of both diesel-range and gasoline-range compounds.

d = Laboratory analytical report note: TPH-D results consist of both oil-range and gasoline-range compounds.

f = Laboratory analytical report note: unmodified or weakly modified gasoline is significant.

g = Fuel oil.

** = This column summarizes results for analysis using EPA Method 8260 for fuel oxygenates (MTBE, TAME, DIPE, ETBE, and TBA) or lead scavengers (EDB, 1,2-DCA/EDC).

Results in milligrams per liter (mg/L), unless otherwise indicated.

TABLE 2
SUMMARY OF LABORATORY ANALYTICAL RESULTS
Well OW2

Date	TPH-D	TPH-G	TPH-MO	Benzene	Toluene	Ethyl- benzene	Total Xylenes	Other Fuel Additives by 8260, incl. MTBE**
04/17/07				No sample recovered				
01/18/07				No sample recovered				
11/14/06				No sample recovered				
6/29/06				No sample recovered				
2/3/06	0.37,b	0.14,h	. ND<0.25	--	--	--	--	--
11/18/05				No sample recovered				
7/28/05				No sample recovered				
4/13/05	0.22,b	0.065	--	ND <0.0005	ND <0.0005	ND <0.0005	ND <0.0005	ND<0.0005, except MTBE = 0.0097
1/31/05				No sample recovered				
10/15/04				No sample recovered				
07/14/04				No sample recovered				
4/6/04	--	0.069,a	--	ND <0.00062	ND <0.00062	ND <0.00062	ND <0.00062	--
2/11/04	--	0.21	--	ND <0.0005	ND <0.0005	ND <0.0005	ND <0.0005	ND<0.0005, except MTBE = 0.0064 TBA = 0.0070
11/21/03				No sample recovered.				
6/10/98				OW2 Installed				

NOTES:

TPH-G = Total Petroleum Hydrocarbons as Gasoline.

TPH-D = Total Petroleum Hydrocarbons as Diesel.

MTBE = Methyl tert-Butyl Ether.

ND = Not Detected.

-- = Not Analyzed.

a = Laboratory analytical report note: lighter than water immiscible sheen present on the sample.

b = Laboratory analytical report note: TPH-D results consist of both diesel-range and gasoline-range compounds.

h = Laboratory analytical report note: heavier gasoline range compounds are significant (aged gasoline?).

* = This column summarizes results for analysis using EPA Method 8260 for fuel oxygenates (MTBE, TAME, DIPE, ETBE, and TBA) or lead scavengers (EDB, 1,2-DCA/EDC).

Results in milligrams per liter (mg/L), unless otherwise indicated.