

California Linen Chronological Summary				
Report Date	Report Description	Sampling Locations	Report No.	NOTES
5/1/2003	Well Sampling Report for 4/2/03 sampling	MW1, MW2	0304.R1	Assumed northerly groundwater flow direction
2/22/2005	Subsurface Investigation and Underground Utility Survey (drilled and sampled 7/20-23/04)	B1-B3, SG1-SG3	0304.R2	
11/16/2005	Subsurface Investigation on 9/13-14/05	B4-B12	0304.R3	Included cross sections A-A' and B-B', strong solvent odors at B6.
3/24/2006	Subsurface Investigation on 1/11-12/06	B13-B17	0304.R4	Augmented previous investigation
4/24/2007	Borings to investigate TPH extent and install extraction wells (borings 8/8-8/11 and 10/18-10/29/06; wells drilled 9/5-/9/8/06; wells developed 9/22-26/06; wells sampled 10/31/06-11/1/06)	B18-B27, B29, E1-E3, E6, E7, I1, I2	0304.R5	Includes discussion of Phase I report, geophysical survey in warehouse, and geophysical anomaly excavation.
5/14/2007	SVE from 10/12/06 through 5/14/07		0304.R6	
5/14/2007	UST removal on 12/16/06		0304.R7	
4/24/2007	Well Install on 2/22/07	MW4-MW6	0304.R8	
5/14/2007	Well install 3/21/07 through 4/6/07.	E4, E8, E9	0304.R9	
8/22/2007	EBMUD Discharge Report		0304.R10	
2/4/2008	Drilling B49-B66 and MW7 on 11/13-12/10/07, all wells sampled 1/6-11/08	B49-B66, MW7	0304.R11	Sample results and discussion are provided under separate cover.
5/22/2008	Supplemental SVE Report (SVE operated 10/12/06 to 3/19/07, shut down 3/19/07 through 4/1/07, Calclean operated again 4/2/07 through 5/30/07, SVE by Mako 6/8/07 through 8/7/08.		0304.R12	
5/29/2008	Well sampling 4/3-7/08	E1,E2, E3, E4, E6, E7, E8, E9, MW1, MW2, MW4-MW7, I1	0304.R13	
8/6/2008	Request for Site Closure Report by Zemo Associates	Soil Excavation and Disposal Report dated 8/6/08 by RGA is Appendix A of the report	0304.R14	The RGA report documents excavation for Pits 1-7, includes pit confirmation sample results, wellhead survey data, calculated groundwater flow directions
8/29/2008	7/28-29/08 well sampling	E2, E3, E4, E6, E8, E9, MW1	0304.R15	E7 not sampled because cap could not be removed.
3/13/2009	Response to County 1/30/09 Letter for 1) dissolved contaminant plume migration, 2) post remediation soil vapor sampling, 3) down gradient soil contamination. A separate work plan addresses these issues in detail		0304.L86	
3/13/2009	Subsurface Investigation Work Plan	1) post remediation soil vapor sampling, 2) dissolved contaminant plume migration, 3) down gradient soil contamination, 4) soil excavation and removal	0304.W6	Contains summary tables of results exceeding ESLs for all media, summary figures showing areas of interest, historical metals analysis in Appendix A, geologic cross sections
5/8/2009	Subsurface Investigation Report	Geophysical Profiles 1-3, Borings B67-B88, Soil Gas Samples SG6-SG22, Post Excavation Pit Confirmation Samples (6), and Test Pit Samples TP1-TP4	0304.R16	See Tables and Figures
8/12/2009	Soil Gas Investigation on 4/30, 5/18, 5/28 and 6/8/09	SG23-26, SG28-39, SG41-60	0304.R17	See Tables and Figures
11/11/2009	Soil Disposal Report	Pits 1, 2, 6	0304.R18	



Printer

↗

410'
↔
122'
↑

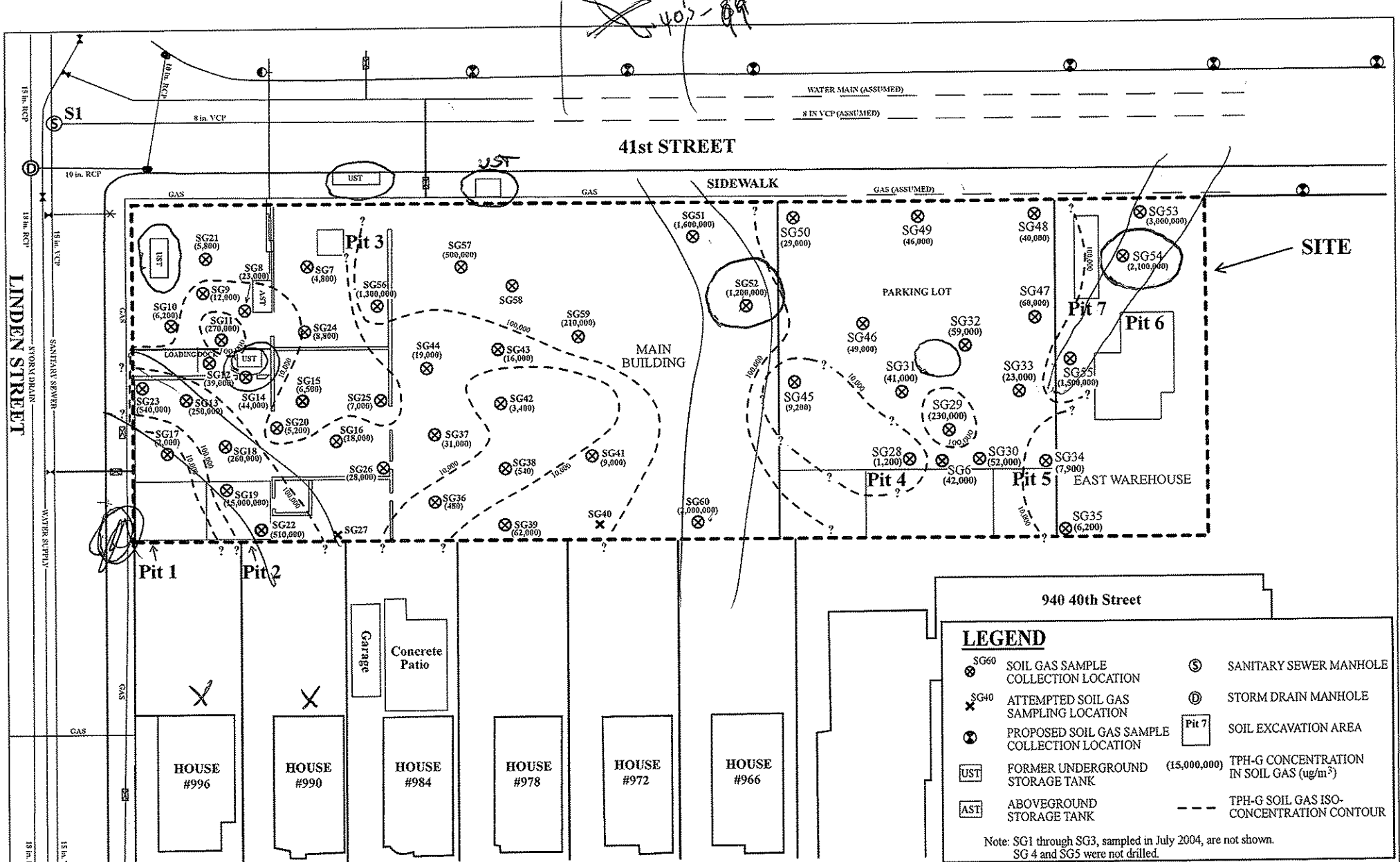
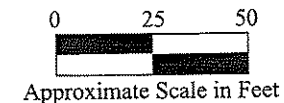


Figure 4
Site Vicinity Map Showing TPH-G in Soil Gas
California Linen Rental Company
989 41st Street
Oakland, California



Base Map From:
California Utility Survey Utility Sketch Plan,
Feb. 14, 2005
and Google Earth, June 2007

RGA Environmental, Inc.
1466 66th Street
Emeryville, CA 94608



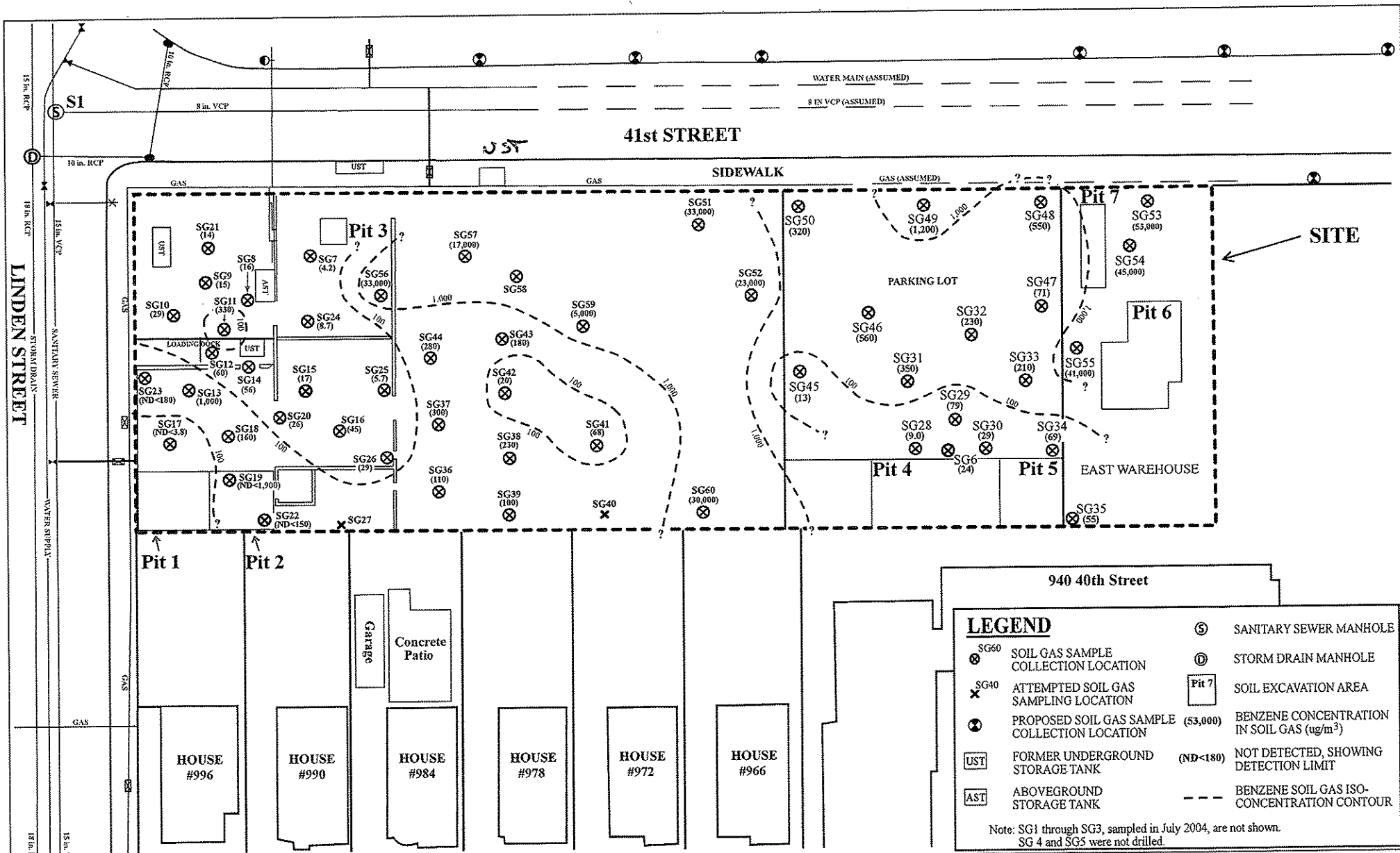
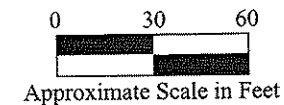


Figure 5
 Site Vicinity Map Showing Benzene in Soil Gas
 California Linen Rental Company
 989 41st Street
 Oakland, California



Base Map From:
 California Utility Survey Utility Sketch Plan,
 Feb. 14, 2005
 and Google Earth, June 2007

RGA Environmental, Inc.
 1466 66th Street
 Emeryville, CA 94608



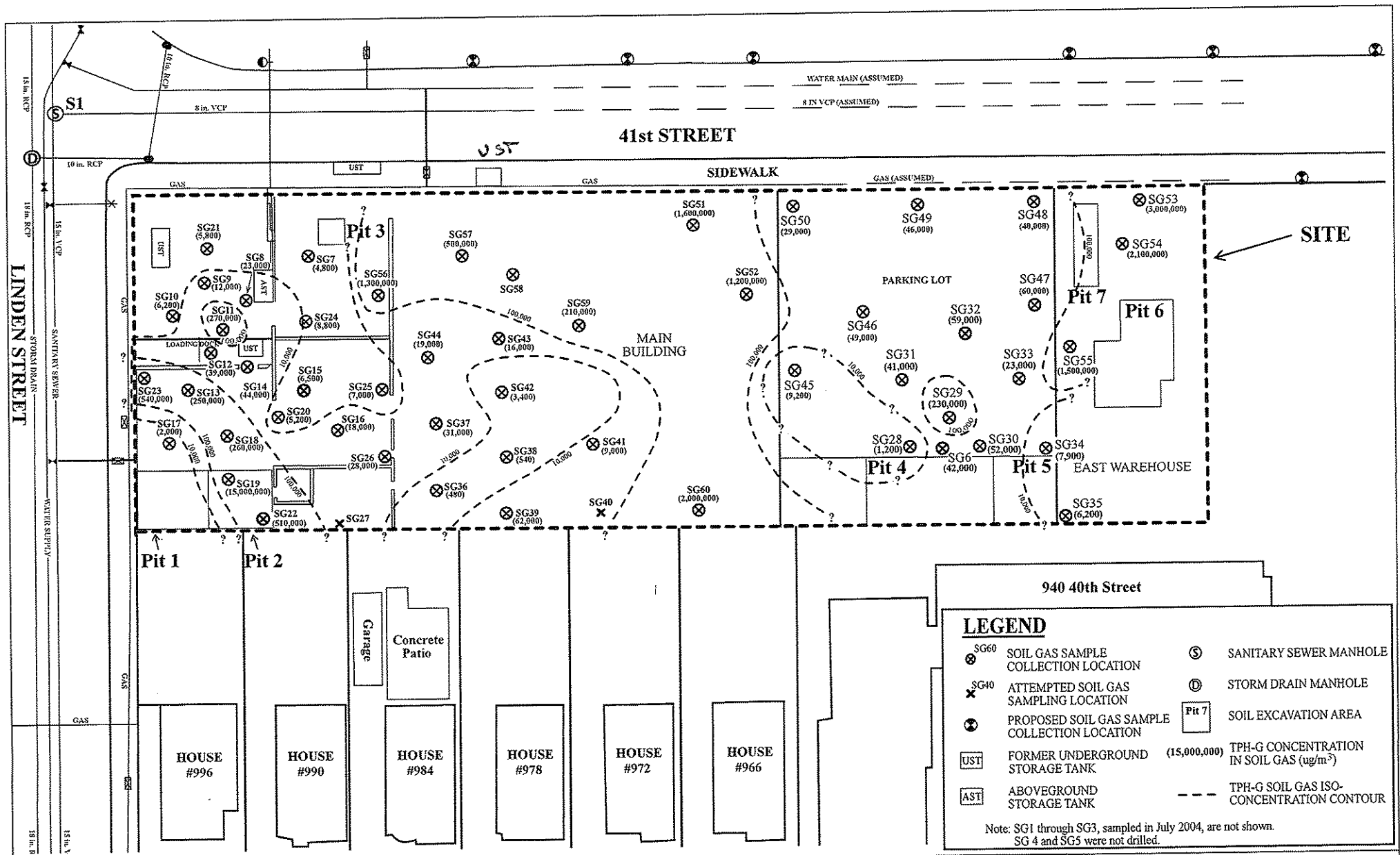


Figure 4
 Site Vicinity Map Showing TPH-G in Soil Gas
 California Linen Rental Company
 989 41st Street
 Oakland, California



Base Map From:
 California Utility Survey Utility Sketch Plan,
 Feb. 14, 2005
 and Google Earth, June 2007

RGA Environmental, Inc.
 1466 66th Street
 Emeryville, CA 94608

