

## Detterman, Mark, Env. Health

---

**From:** Detterman, Mark, Env. Health  
**Sent:** Tuesday, April 12, 2011 8:45 AM  
**To:** 'PDKing0000@aol.com'  
**Cc:** donaldjaym@comcast.net  
**Subject:** RE: Request for Confirmation Regarding Downgradient Paleochannels - CA Linen

Thanks Paul. It is the paleochannel system that has been mapped out downgradient of California Linen (up to the approximate area of investigation for Cal Linen).

*Mark Detterman*  
*Senior Hazardous Materials Specialist, PG, CEG*  
*Alameda County Environmental Health*  
*1131 Harbor Bay Parkway*  
*Alameda, CA 94502*  
*Direct: 510.567.6876*  
*Fax: 510.337.9335*  
*Email: [mark.detterman@acgov.org](mailto:mark.detterman@acgov.org)*

*PDF copies of case files can be downloaded at:*

*<http://www.acgov.org/aceh/lop/ust.htm>*

---

**From:** [PDKing0000@aol.com](mailto:PDKing0000@aol.com) [<mailto:PDKing0000@aol.com>]  
**Sent:** Tuesday, April 12, 2011 5:55 AM  
**To:** Detterman, Mark, Env. Health  
**Cc:** [donaldjaym@comcast.net](mailto:donaldjaym@comcast.net)  
**Subject:** Request for Confirmation Regarding Downgradient Paleochannels - CA Linen

Hi Mark,

You will find attached a DRAFT pdf copy of a figure that we located in the files for sites located downgradient of the California Linen site that shows paleochannels in the vicinity of the California Linen site (document DRAFT Site Vicinity Aerial Photograph w Paleochannels.pdf). We have superimposed the information on an aerial photograph and hi-lited the paleochannels on the figure to better illustrate the locations of the paleochannels. I have provided a copy of this figure to LeRoy Griffin at the Oakland Fire Department Hazmat division as support that he had requested for a westerly to southwesterly groundwater flow direction in the vicinity of the California Linen site.

Please confirm that this is the paelochannel information that you and Donna referenced during our meeting that Donna had requested we augment with information obtained from the California Linen site and associated upgradient locations. Thank you!

Paul

Paul H. King  
Professional Geologist

P&D Environmental, Inc.  
55 Santa Clara Avenue, Suite 240  
Oakland, CA 94610

(510) 658-6916 telephone  
(510) 834-0152 facsimile  
(510) 387-6834 cellular  
[Paul.King@pdenviro.com](mailto:Paul.King@pdenviro.com)

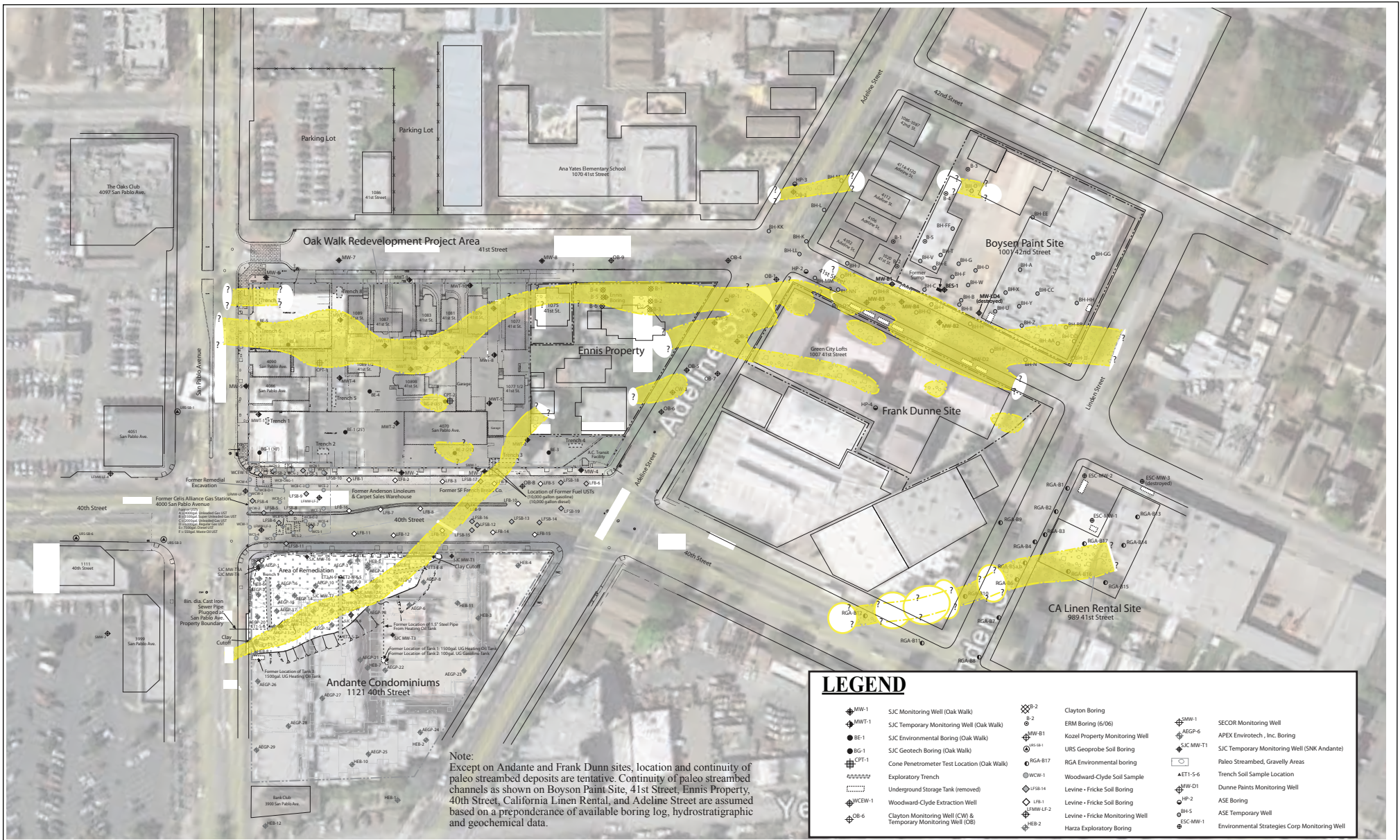


Figure 2  
 Site Vicinity Aerial Photograph  
 California Linen Rental Company  
 989 41st Street  
 Oakland, California



Base Map From:  
 The San Joaquin Company, Inc., January 27, 2007  
 and Google Earth, October 2009

P&D Environmental, Inc.  
 55 Santa Clara Avenue, Suite 240  
 Oakland, CA 94610

