



JONAS & ASSOCIATES INC.
Environmental Consultants

ENVIRONMENTAL PROTECTION
97 JUL 30 8:53 AM '97

2815 Mitchell Drive, Suite 209 • Walnut Creek, CA 94598 • Tel: (510) 933-5360 • Fax: (510) 933-5362

July 28, 1997

Ms. Eva Chu
Hazardous Materials Specialist
Alameda County Environmental Health Services
1131 Harbor Bay Parkway, Second Floor
Alameda, California 94502
(510) 567-6762; 337-9335 fax

Subject: Work Plan for Further Groundwater Characterization.
Project: Former PACO Pumps, 9201 San Leandro Street, Oakland, California.

Dear Ms. Chu:

Following is the scope of work for further characterization of groundwater downgradient of monitoring well 9MW3. Results of this characterization is expected to be used in the RBCA modeling effort for agency consideration of regulatory closure for the site. Following is our proposed scope of work:

Task 1: Obtain Permit

Obtain a permit to perform groundwater characterization at two borehole locations.

Task 2: Borehole Characterization/Mob./Demob./Sampling/Analysis

Bore at two locations approximately 50' to 100' feet downgradient from monitoring well 9MW3. Collect groundwater samples from both locations. Analyze the samples for TPH-gasoline and BTEX. No soil samples will be collected.

Task 3: Characterization Report/Meeting

Provide a brief Characterization (letter) Report to Paco Pumps Inc., the Alameda County Environmental Health Services, and for distribution. Discuss results with the Agency.

We look forward to your authorization to proceed with the aforementioned scope of work. Should you have any questions or comments, please contact Mark Jonas at your convenience.

Sincerely,
JONAS & ASSOCIATES INC.
Mark Jonas
Mark Jonas, R.G.
Project Manager

has bulk density, water content, porosity, fraction of carbon content, etc. which can be used in Tier 2 analysis YES

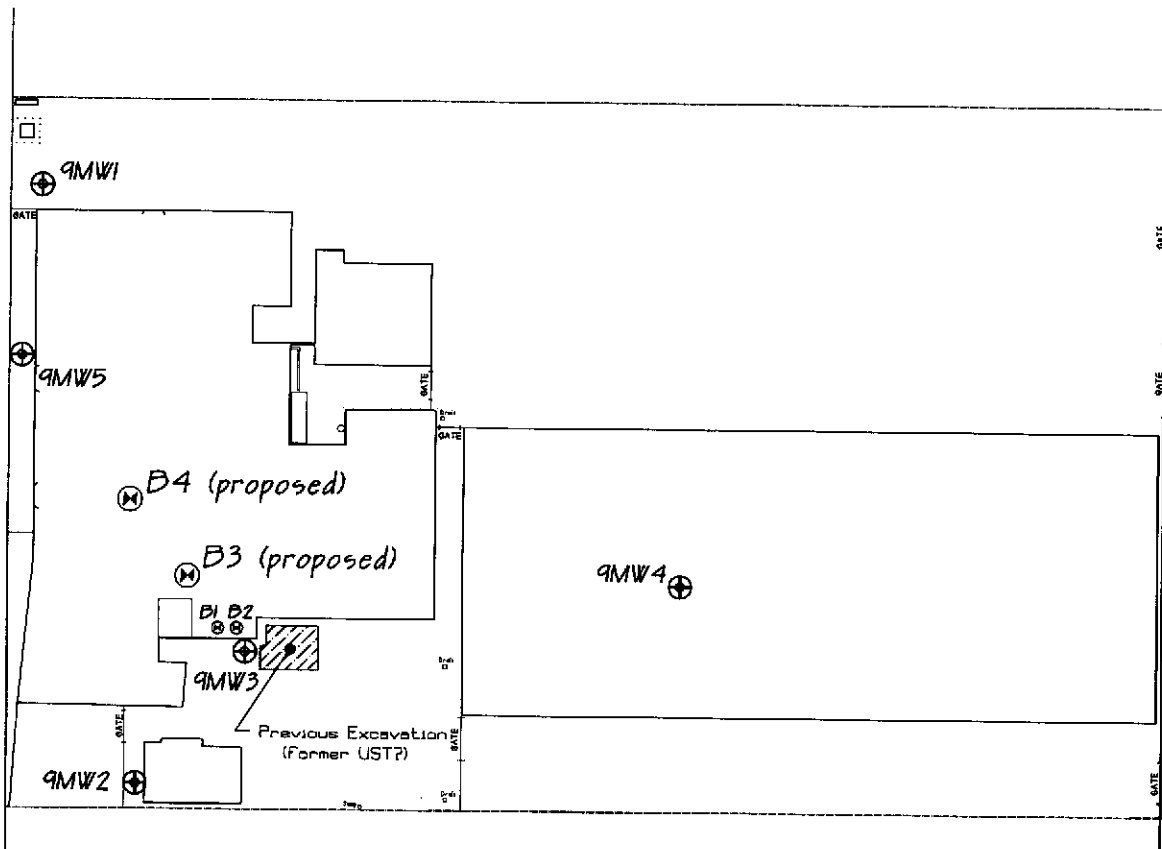
cc: Distribution

Drawn
by

J.R.W.
7-21-1997

Drawing
Number PC0220-7-97:F1

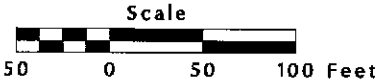
Figure 1



San Leandro Street

Legend:

- ⊕ Monitoring Well
- ⊗ Proposed Borehole Location
- ⊙ Existing Borehole Location
January 31, 1997



Proposed and Existing Borehole Locations

Former PACO PUMPS
9201 San Leandro Street
Oakland, California

Prepared by
JONAS & ASSOCIATES INC.

Date: 7-21-1997
Locations Approx.

Figure 1

Drawing Number
PC0220-7/97:F1

DOCUMENT DISTRIBUTION

Former Paco Pumps
9201 San Leandro Street, Oakland, California:

Small Business Administration

District Counsel
Small Business Administration
211 Main Street, 4th Floor
San Francisco, California 94105

Lender

Kathryn J. Sennott
Senior Loan Officer
Heller First Capital Corporation
650 California Street, 23rd Floor
San Francisco, California 94108

Borrower

Leonard M. Silvani
GP Holding, LLC
9201 San Leandro Street
Oakland, California 94603

BAEDC

James Baird
Bay Area Employment Development Company
1801 Oakland Boulevard, Suite 300
Walnut Creek, California 94596

Indemnitor

Mr. John Lilla
Newflo Corporation (for Paco Pumps, Inc.)
301 Camp Craft Road, Suite 100
West Lake Hills
Austin, Texas 78746

PCC Flow Technologies Inc
16801 Greenspoint Pk Dr. Suite 355
Houston, TX 77060