



JONAS & ASSOCIATES INC.
Environmental Consultants

Ju
8/30

2815 Mitchell Drive, Suite 209 • Walnut Creek, CA 94598 • (510) 933-5360 • (510) 933-5362 Fax

August 18, 1994

Ms. Eva Chu
Hazardous Materials Specialist
Alameda County Health Care Services Agency
Department of Environmental Health
1131 Harbor Bay Parkway, 2nd Floor
Alameda, California 94502
(510) 567-6762
(510) 337-9335 fax

AUG 24 RECD

Subject: Completion of Monitoring Well 9MW5 at PACO Pumps Facility
Project: PACO PUMPS, 9201 San Leandro Street, Oakland, California
J&A #: PCO-220

Dear Ms. Chu:

As requested in your July 1, 1994 letter titled "Workplan Approval for Paco Pumps, 9201 San Leandro St., Oakland 94603", we installed monitoring well 9MW5. The monitoring well was installed on August 12, 1994 and no problems were encountered. We currently plan to collect quarterly groundwater samples on August 24, 1994 and we will include monitoring well 9MW5 in this sampling round. We will also have the well surveyed and its water elevation will be presented in the next quarterly monitoring report.

Please call us if you have any questions or comments.

Sincerely,
JONAS AND ASSOCIATES INC.

Mark L. Jonas
Mark L. Jonas
Principal

attachments: 9MW5 Drilling and Construction Log; Current Monitoring Wells

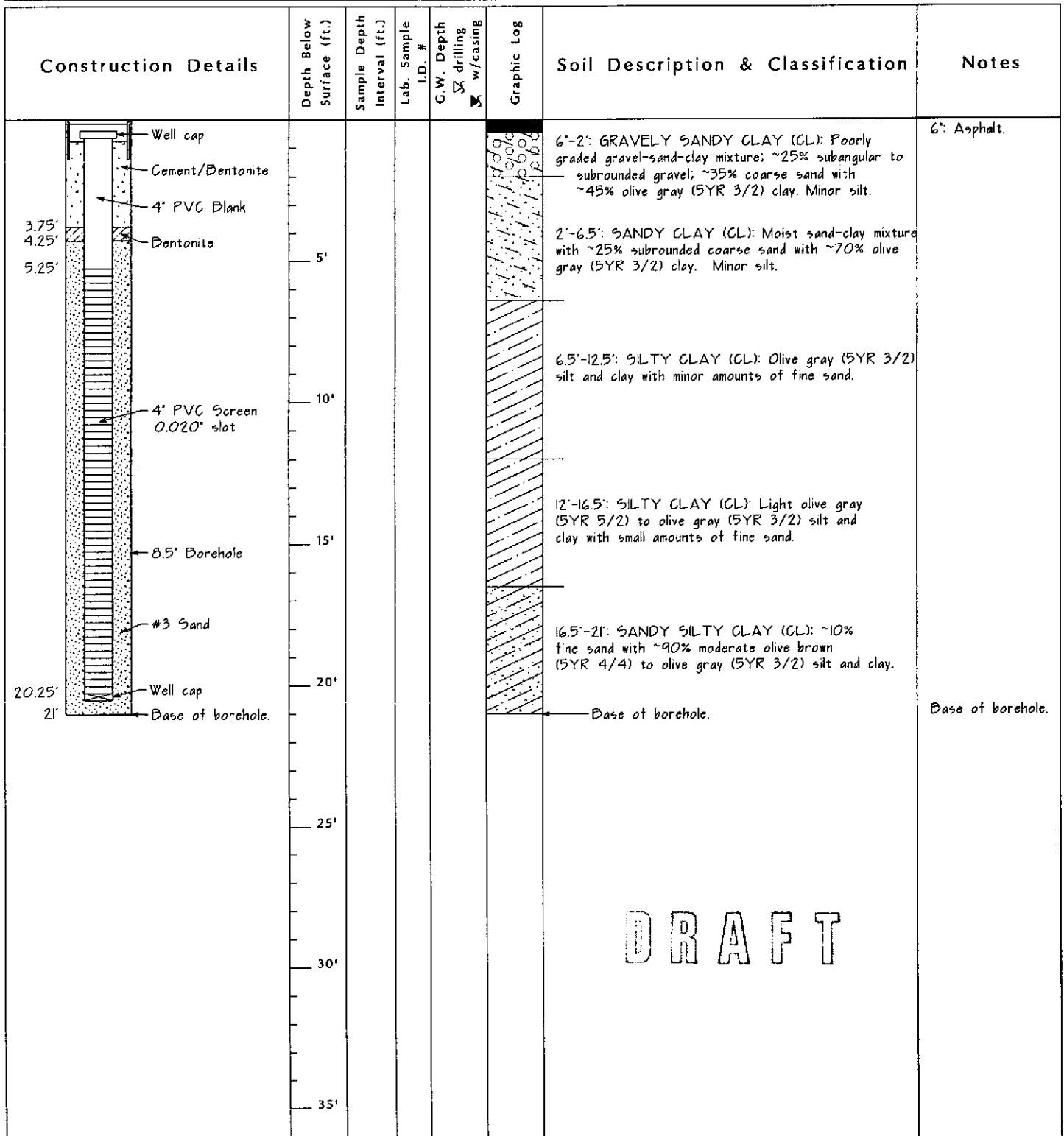
cc: Mr. John Lilla (Newflo)
Dr. Vida G. Wright, P.E.

ltr8-18.pc0

DRILLING & CONSTRUCTION WELL LOG

Well #: **9 M W 5**
 Site: PACO Pumps
 9201 San Leandro St.
 Sheet: 1 of 1

Driller: Advance Drilling Co. Inc. Rig: CME-75 Method: Hollow Stem Auger
 Started: August 12, 1994 Finished: August 12, 1994 Location: W. of Mnft. Bldg.
 Elevation: to be determined Boring Depth: 21 feet bgs Screen Depth: 5.25'-20.25'bgs
 Field Supervisor: Mark Jonas Supervising Engineer/Geologist: Dr. Vida G. Wright, P.E.
 Note: Actual depth to first water was not able to be determined.



DRAFT

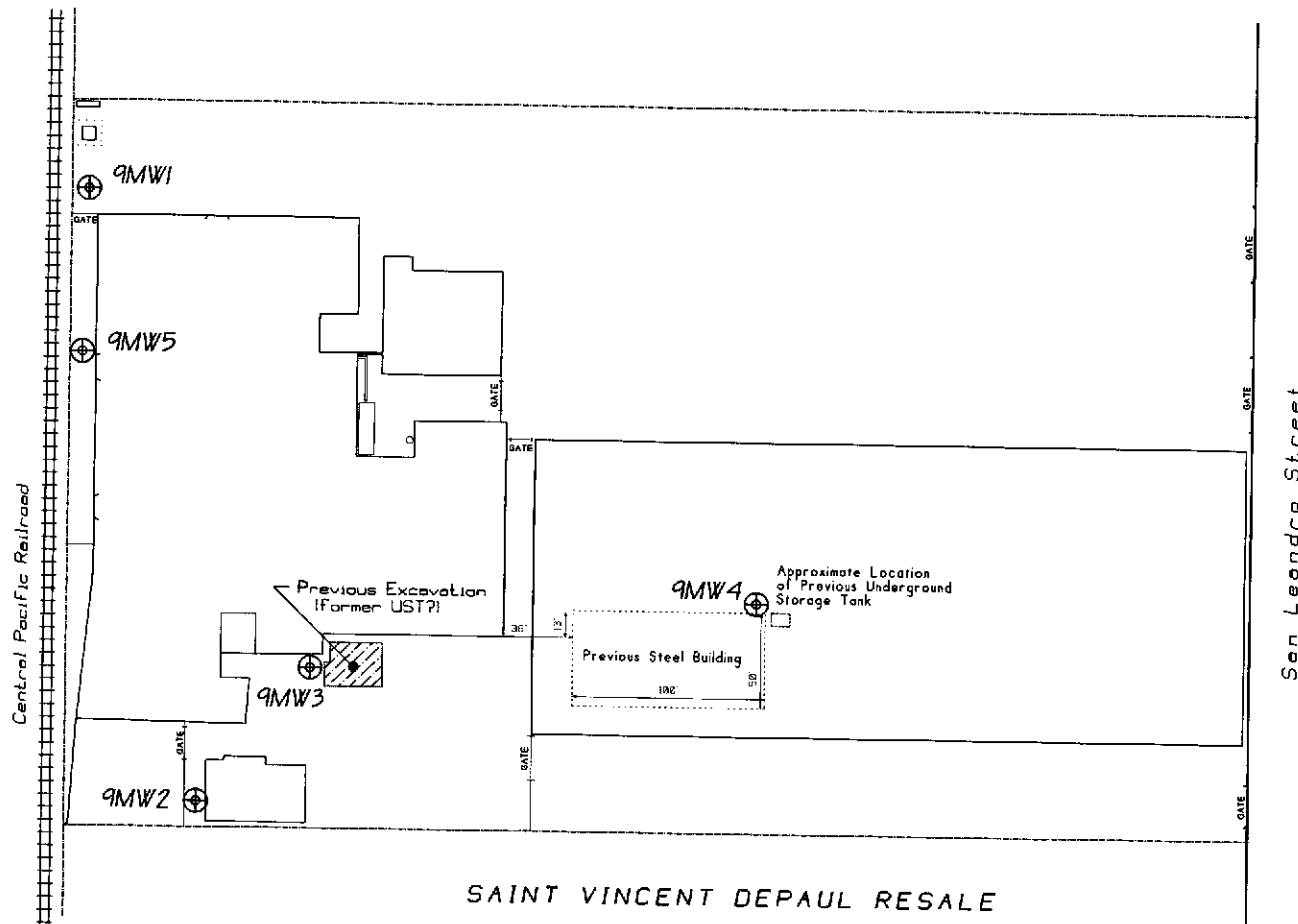
9MW5 Well Log

Figure D-5

Drawn by M.J. 8-18-1994

Drawing Number PCO220-8/94:CMW

Figure CMW

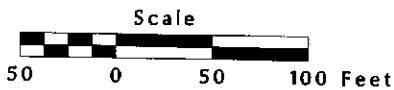


Legend:

⊕ Monitoring Well

UST - Underground Storage Tank

Well	Date Installed	Total Depth	Casing Diameter	Borehole Diameter	Screen Depth	Sand Pack Depth
9MW1	11-4-1992	21'	4"	8.5"	5.25'-20.25'	4.25'-21'
9MW2	11-3-1992	21'	4"	8.5"	5.25'-20.25'	4.25'-21'
9MW3	11-4-1992	21'	4"	8.5"	5.25'-20.25'	4.25'-21'
9MW4	11-9-1992	21'	4"	8.5"	5.25'-20.25'	4.25'-21'
9MW5	8-12-1994	21'	4"	8.5"	5.25'-20.25'	4.25'-21'



Current Monitoring Wells

PACO Pumps Inc.
9201 San Leandro Street
Oakland, California

Prepared by

JONAS & ASSOCIATES INC.

Date: 8-18-1994
Locations Approx.

Figure CMW

Drawing Number
PCO220-8/94:CMW