

RO 313  
3 February 2004

Mr. Amir K. Gholami  
Environmental Health Services  
Environmental Protection  
1131 Harbor Bay Parkway  
Alameda, CA 94502

Subject: 2415 and 2425 Mariner Square Drive, Alameda, CA 94501

Dear Amir:

Environmental Resources Management (ERM) has prepared this letter on behalf of Mariner Square and Associates as a follow up to our meeting of in October 2003. We would like to schedule a meeting with you at your convenience to discuss the status of the project as a whole (both the commercial and residential parcels). To assist with your review project files, we have attached several figures that depict the distribution of chemicals of concern at the sites (Attachment A).

As you are aware, construction of a moderate density residential structure is planned on the residential portion (2425) of the site. In order to meet the financial and time components of the schedule, initial construction activities will be starting as early as 26 February 2004. Consistent with the 2 June 2000 letter from Alameda County (Attachment B) that states "Base (sic.) upon the Risk Assessment, no remediation is necessary for 2425 Mariner Square Drive, Alameda, CA 94502" both the present configuration of the site the proposed new residential configuration will not present an unacceptable risk to human health or the environment.

As discussed in more detail in our letter dated 10 September 2003, the following measures will be enacted during construction activities throughout the development phase to ensure that development is performed in a manner protective of human health and the environment:

- Full disclosure of known environmental conditions to contractors planning to perform subsurface work. This will allow the contractors

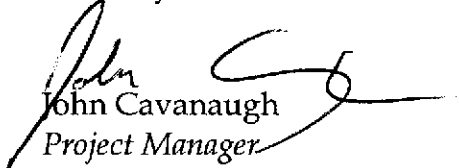


to evaluate the need for training, the modification of work practices, or the use of personal protective equipment to ensure adequate protection of worker health and safety.

- Monitoring of excavations.
- Segregation and stockpiling of impacted material disturbed during development.
- Skimming/pumping and off-site disposal of any nonaqueous-phase liquids encountered on the ground water surface during excavation activities.
- Pre-treatment of construction-generated ground water to be discharged to the any storm or sanitary sewer in accordance with NPDES or local POTW requirements.

Please contact me if you have any comments or questions.

Sincerely,

  
John Cavanaugh  
Project Manager

JOC/kmm/5383.00  
attachments

cc: John Beery, Mariner Square and Associates (without attachments)  
Bill Mabry, Oakmont Senior Living LLC (without attachments)  
Mike Grant, Union Pacific Railroad (without attachments)  
Karen Streich, ChevronTexaco (without attachments)

**ALAMEDA COUNTY  
HEALTH CARE SERVICES****AGENCY**

DAVID J. KEARS, Agency Director

**ENVIRONMENTAL HEALTH SERVICES**

ENVIRONMENTAL PROTECTION  
1131 Harbor Bay Parkway, Suite 250  
Alameda, CA 94502-6577  
(510) 567-6700  
FAX (510) 337-9335

June 2, 2000

Mr. Bill Mabry  
Aegis Assisted Living  
220 Concourse Blvd.  
Santa Rosa, CA 94503  
STID 2945

**RE: 2425 Mariner Square, Alameda, CA**

Dear Mr. Mabry:

This site was part of the parcel of 2415 Mariner Square, Alameda. The property owner, John Beery subdivided the parcel into two parcels. The western parcel (industrial/commercial) will retain the address of 2415 Mariner Square. The eastern parcel (residential) new address is 2425 Mariner Square.

Both parcels 2415 and 2425 Mariner Square was marshland prior to filling with "hydraulic fill" in the late 1800's, and was then the site of bulk fuel storage and distribution activities as early as 1916. The site was previously owned by Tidewater/Texaco then Phillips Petroleum, and was used for bulk fuel storage and distribution of refined oils, motor lubricants, and fuel oils for ships until 1972. Since 1972, the site use has been mixed office, restaurant, boat sales, sail manufacturing, boat motor repair, automobile repair, boat hull repair, boat hull stripping and painting.

**SOIL SUMMARY AND EVALUATION**

The borings advanced on the residential portion include MS-1 through MS-4, MS-11, MS-13 MS-14, MS-23, SB-A, and SB-B. Soil samples from borings MS-1, MS-3, MS-4, MS-11, MS-13, MS-14 and MS-23 were analyzed for TRPH, BTEX and VOC's. Soil samples from borings SB-A at 1.5 feet, and SB-B at 1.5 feet bgs were analyzed for total organic carbon. Soil samples SB-A and SB-B were analyzed for 17 metals at 1.5 feet, and for total lead at 3.0 feet. The soil sample from SB-A at 5.5 feet bgs was analyzed for BTEX, vinyl chloride and total organic carbon. TRPH was detected at concentrations ranging from nondetectable (MS-1) to 13,000 ppm (MS-4). Benzene was below detection limits. TEX and VOCs concentrations ranged from nondetectable to 1.2 ppm (MS-4).

Mr. Bill Mabry  
Aegis Assisted Living  
220 Concourse Blvd.  
Santa Rosa, CA 94503  
Page 2 of 3

The monitoring wells installed on the residential portion include MW-1, MW-7 and MW-8. In addition, well MW-5 is located north and adjacent to the northern boundary of the residential portion. Due to the lack of photoionization detector (PID) readings, no soil samples from well MW-8 were analyzed. The soil sample collected from well MW-1 and MW-5 were analyzed for TPH(d), oil and grease, BTEX and VOCs. The soil sample collected from well MW-7 was analyzed for TPH(g), TPH(d), TPHmo, BTEX, VOCs, and vinyl chloride. All analytes were below detection limits in the sample from MW-1. Oil and grease, benzene and VOCs were not detected in the sample from MW-5. TPH(d) and TEX were detected in MW-5 at 220 ppm, 0.5 ppm, 1.6 ppm and 1.4 ppm respectively. TPH(g), TPH(d), benzene, total xylenes, and vinyl chloride were not detected in the sample from MW-7. TPHmo and toluene were detected in the sample from MW-7 at 200 and 0.014 ppm respectively.

#### GROUNDWATER SUMMARY AND EVALUATION

The following summary is based on the analytical results of groundwater samples collected from wells MW-1, MW-7, and MW-8 within the residential portion of the site. TPH(g) has ranged from nondetectable to 750 ppb, TPH(d) has ranged from nondetectable to 1,800 ppb, and TPHmo has been nondetectable in all three wells except for 110 ppb in MW-1 on 6/24/99 and 130 ppb in MW-8 on 9/9/99. Benzene has ranged from nondetectable to 89 ppb, and the highest level of TEX was 64 ppb total xylenes. MTBE was not detected in wells MW-1 or MW-8. Although, MTBE was detected at concentrations of 16 and 34 ppb in well MW-7 on 2/18/98 and 5/8/98 respectively, vinyl chloride has not been detected in these wells.

Well MW-5 is located north of and adjacent to the northern boundary of the residential portion. However, due to the proximity to the residential portion, the analytical results are summarized. TPH(g) has ranged from 290 to 9,000 ppb, TPH(d) has ranged from nondetectable to 8,800 ppb, and TPHmo has ranged from nondetectable to 860 ppb. Benzene has ranged from 1.2 to 48 ppb, and the highest level of TEX was 49 ppb ethylbenzene. MTBE has ranged from nondetectable to 12 ppb. Vinyl chloride has not been detected in well MW-5. Lead was detected in well MW-5 at 82 ppb on 5/25/93 and nondetectable on 9/26/94.

The primary contaminant of concern in groundwater is benzene. The possible exposure pathway is volatilization from groundwater to the enclosed space of the residential structure, and the calculated risk is between 1E-05 and 1E-06. However, the actual risk of exposure by this pathway is minimal due to the proposed configuration of buildings and pavement.

Mr. Bill Mabry  
Aegis Assisted Living  
220 Concourse Blvd.  
Santa Rosa, CA 94503  
Page 3 of 3

The Saltwater Ecological Protection Zone (SEPZ) at the San Francisco International Airport (SFIA) was used in the Risk Assessment as a basis for comparison of similar background conditions. The residential portion is within the SEPZ 300 foot evaluation area. The benzene concentrations in groundwater sample results reported from the three well within the parcel and well MW-5 is, on average below the SEPZ value of 71 ppb. The SFIA SEPZ value for TPH(g) is 9,150 ppb. The TPH(g) concentrations from the three parcel wells and MW-5 average below this value.

To evaluate the risk to human health and environment due to the remaining contamination at the site, a Risk-Based Corrective Action (RBCA) Tier 2 evaluation using a residential scenario was performed. The results for the assessment of the site indicate the following:

- 1) Hydrocarbons remaining in soil will not likely further impact groundwater at the site. Volatile compounds were not reported in the soil samples from the site.
- 2) Volatile compounds remaining in groundwater do not pose a significant risk to residential use of the parcel. The groundwater at the site is not considered drinking water quality. Continued groundwater monitoring and sampling has not shown significant change in the three wells located on the residential parcel.
- 3) The risk of exposure to soil and groundwater is currently low due to the present configuration and in the proposed residential configuration. The receptor pathways are limited to dermal contact during construction and excavation.
- 4) **Base upon the Risk Assessment, no remediation is necessary for 2425 Mariner Square Drive, Alameda, CA 94502**

Presently there are four monitoring wells (MW-1, MW-5, MW-7 & MW-8) on the property at 2425 Mariner Square Drive, Alameda, CA. Monitoring well MW-5 will be relocated from the residential parcel to the commercial parcel. Sampling of monitoring wells MW-1, MW-7 and MW-8 has been discontinued.

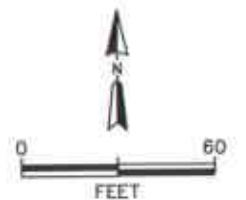
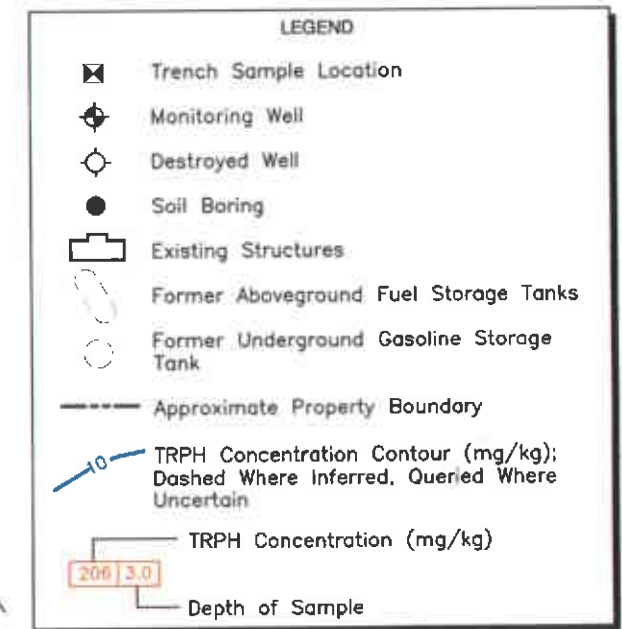
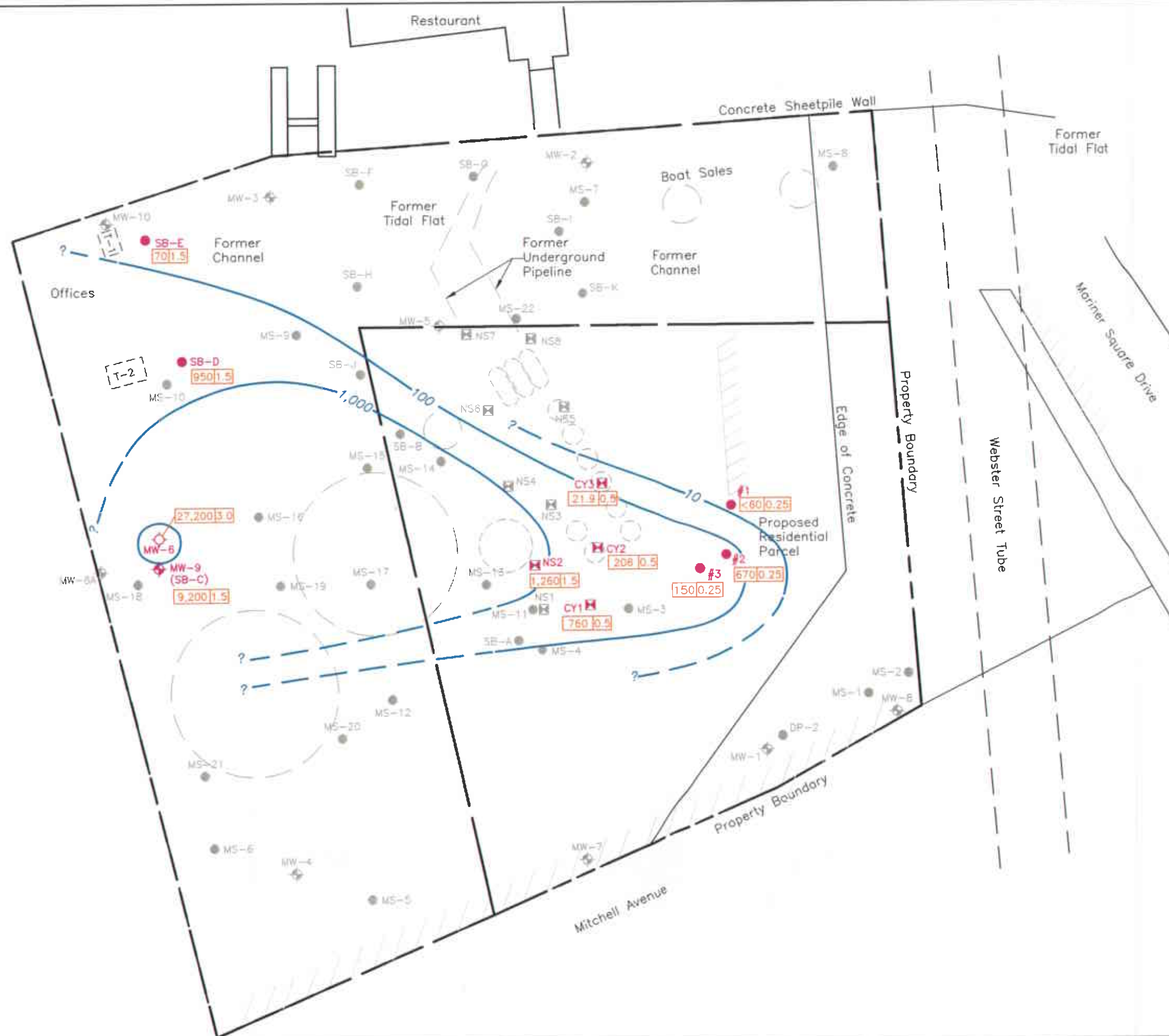
If you have any questions, please contact me at (510) 567-6774.

Sincerely,



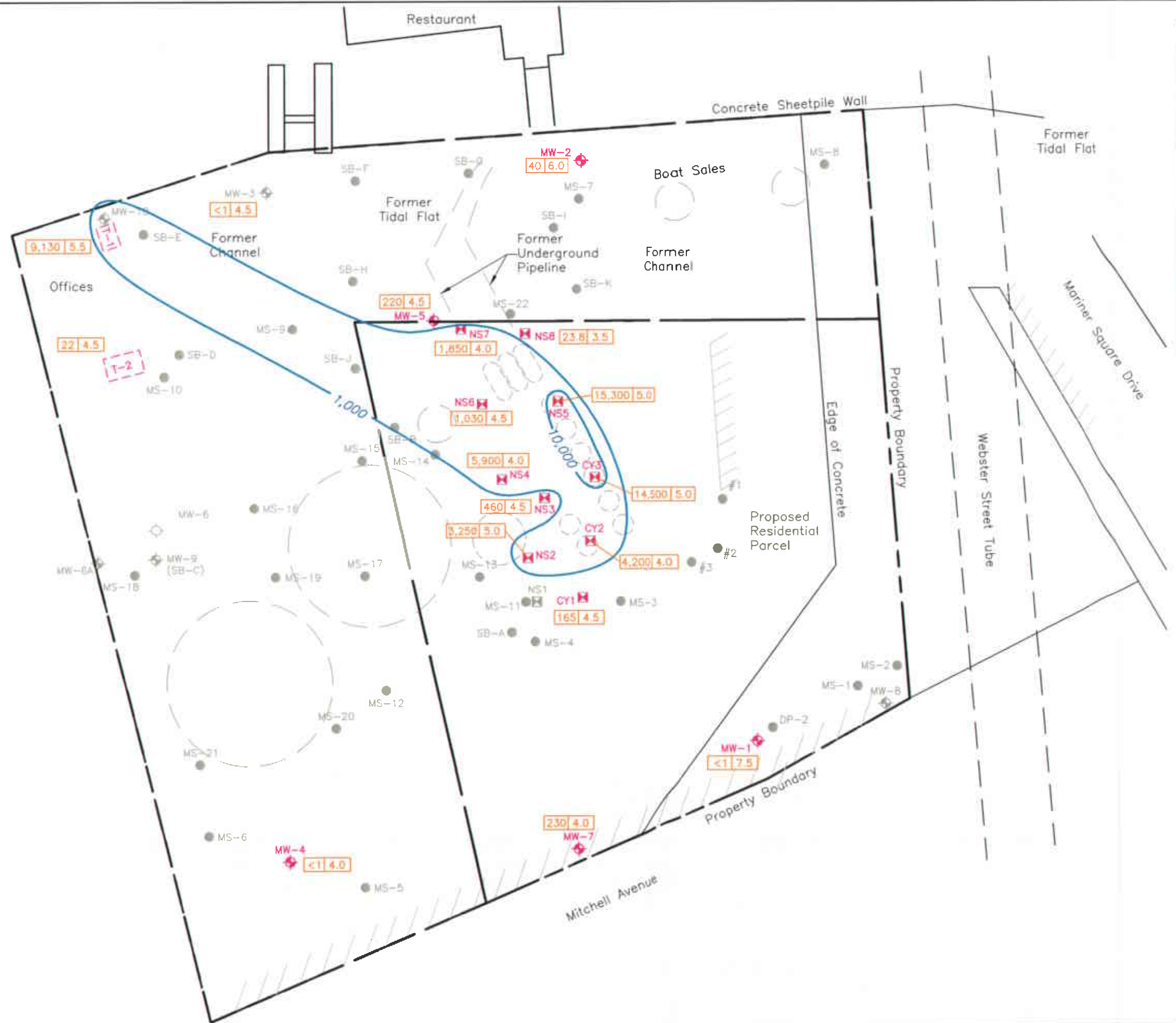
Larry Zeto  
Sr. Hazardous Materials Specialist

Cc: John Beery, 2900 Main Street, Suite 100, Alameda, CA 94501  
Files



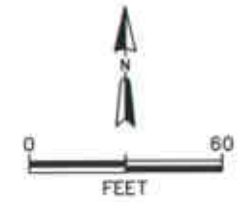
**Figure A**  
**TRPH Concentrations in Soil (0-3')**  
**Mariner Square**  
**Alameda, California**





**LEGEND**

- Trench Sample Location
- Monitoring Well
- Destroyed Well
- Soil Boring
- Existing Structures
- Former Aboveground Fuel Storage Tanks
- Former Underground Gasoline Storage Tank
- Approximate Property Boundary
- TRPH Concentration Contour (mg/kg)
- TRPH Concentration (mg/kg)
- Depth of Sample



**Figure B**  
*TRPH Concentrations in Soil (>3')*  
**Mariner Square**  
**Alameda, California**  
 ERM 09/03

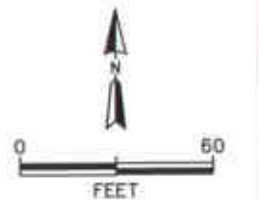
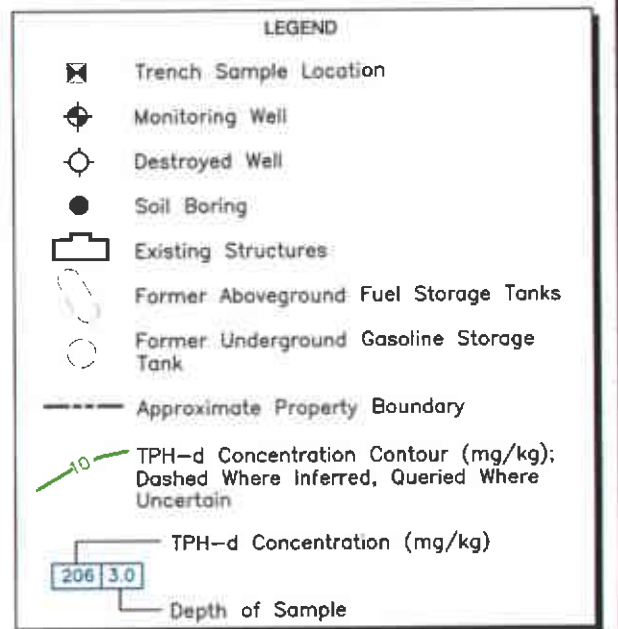
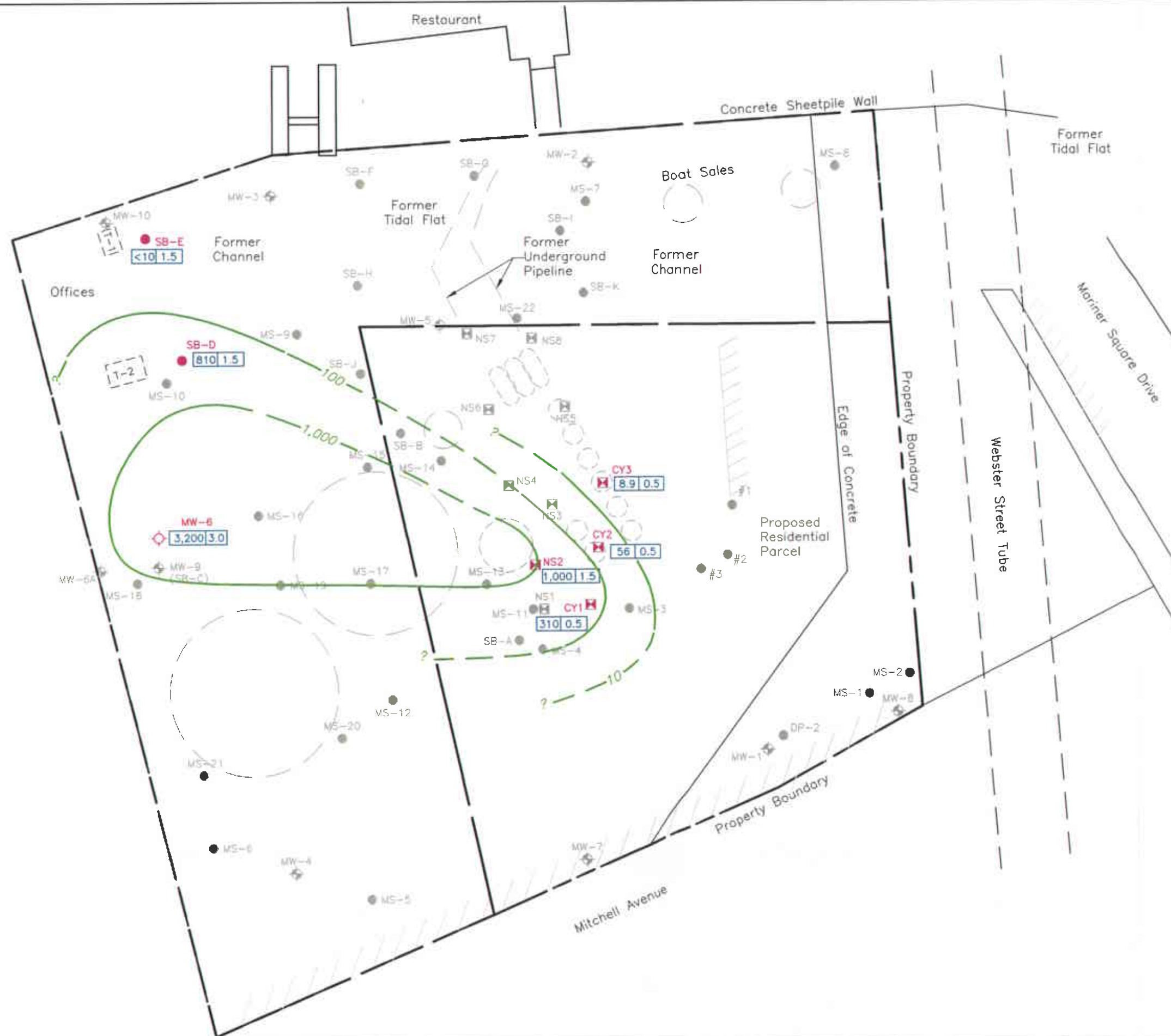
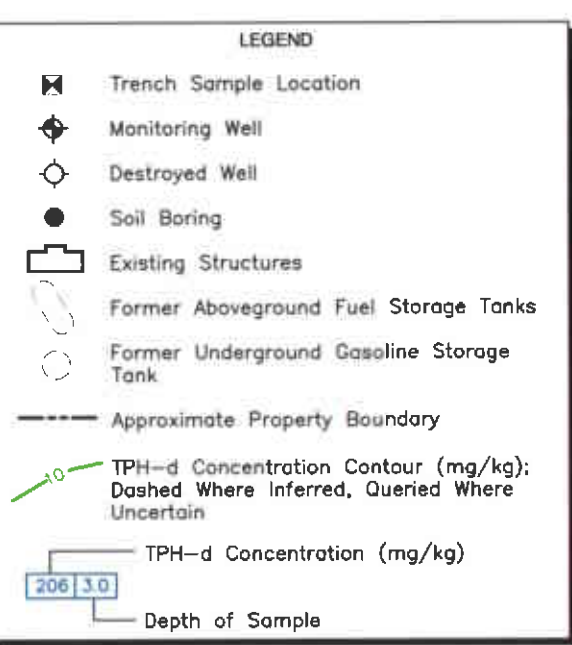
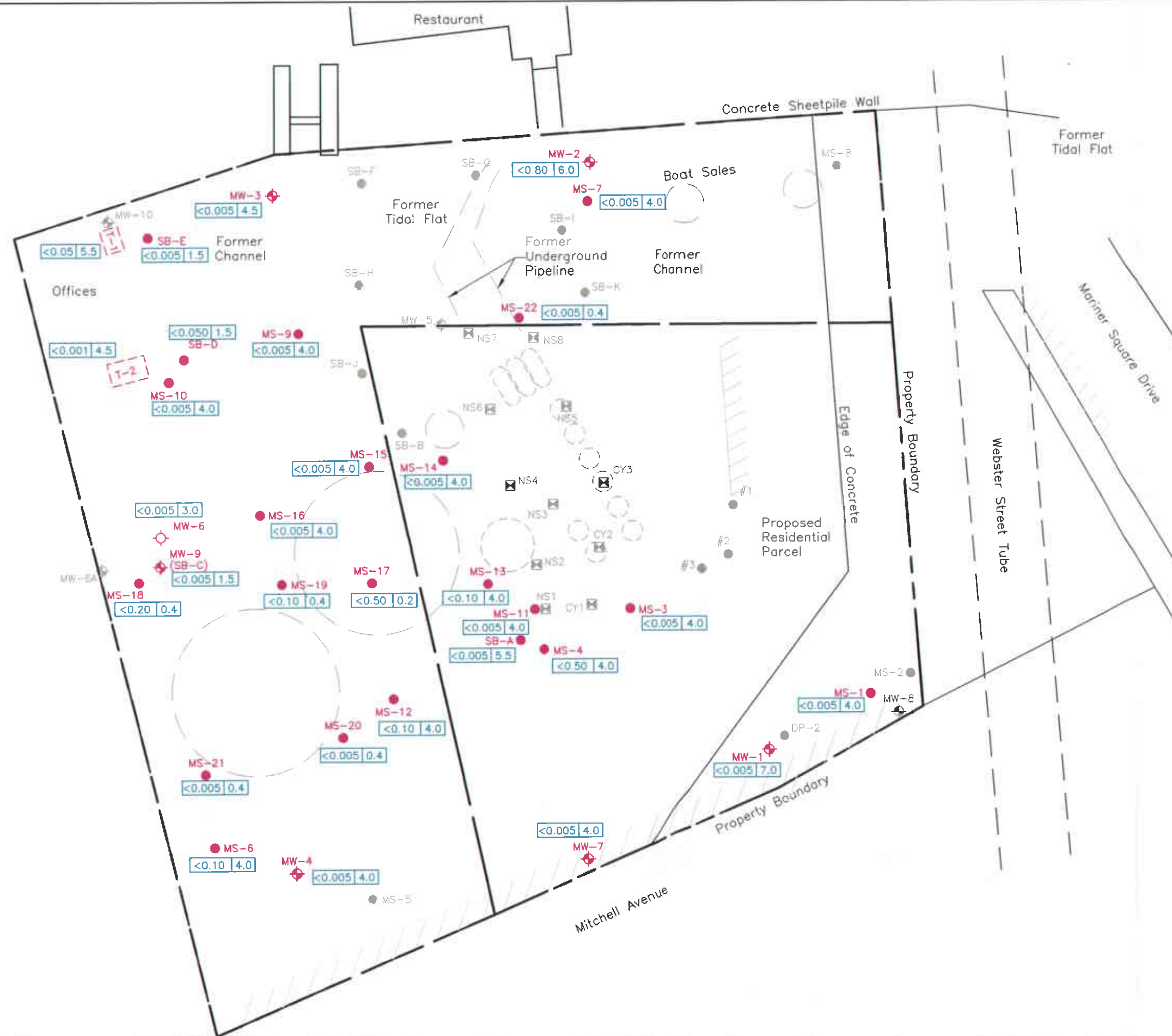


Figure C  
 TPH-d Concentrations in Soil (0-3')  
 Mariner Square  
 Alameda, California





ERM 09/03



**Figure E**  
 Maximum Benzene Concentrations  
 in Soil (All Depths)  
 Mariner Square  
 Alameda, California



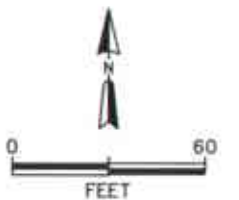
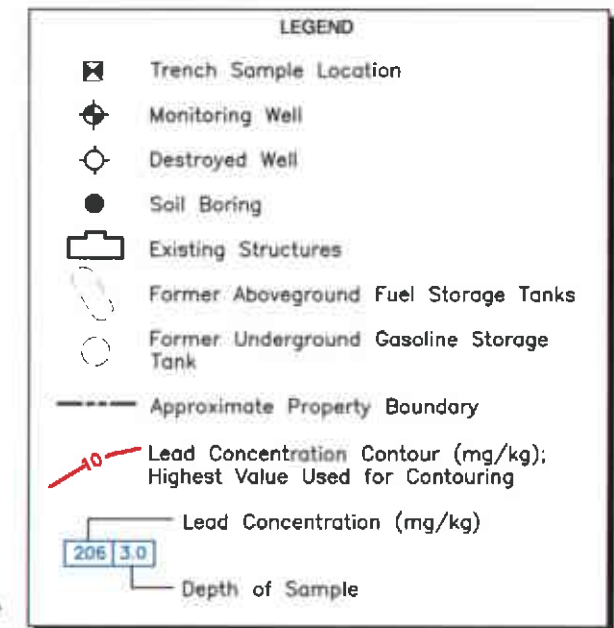
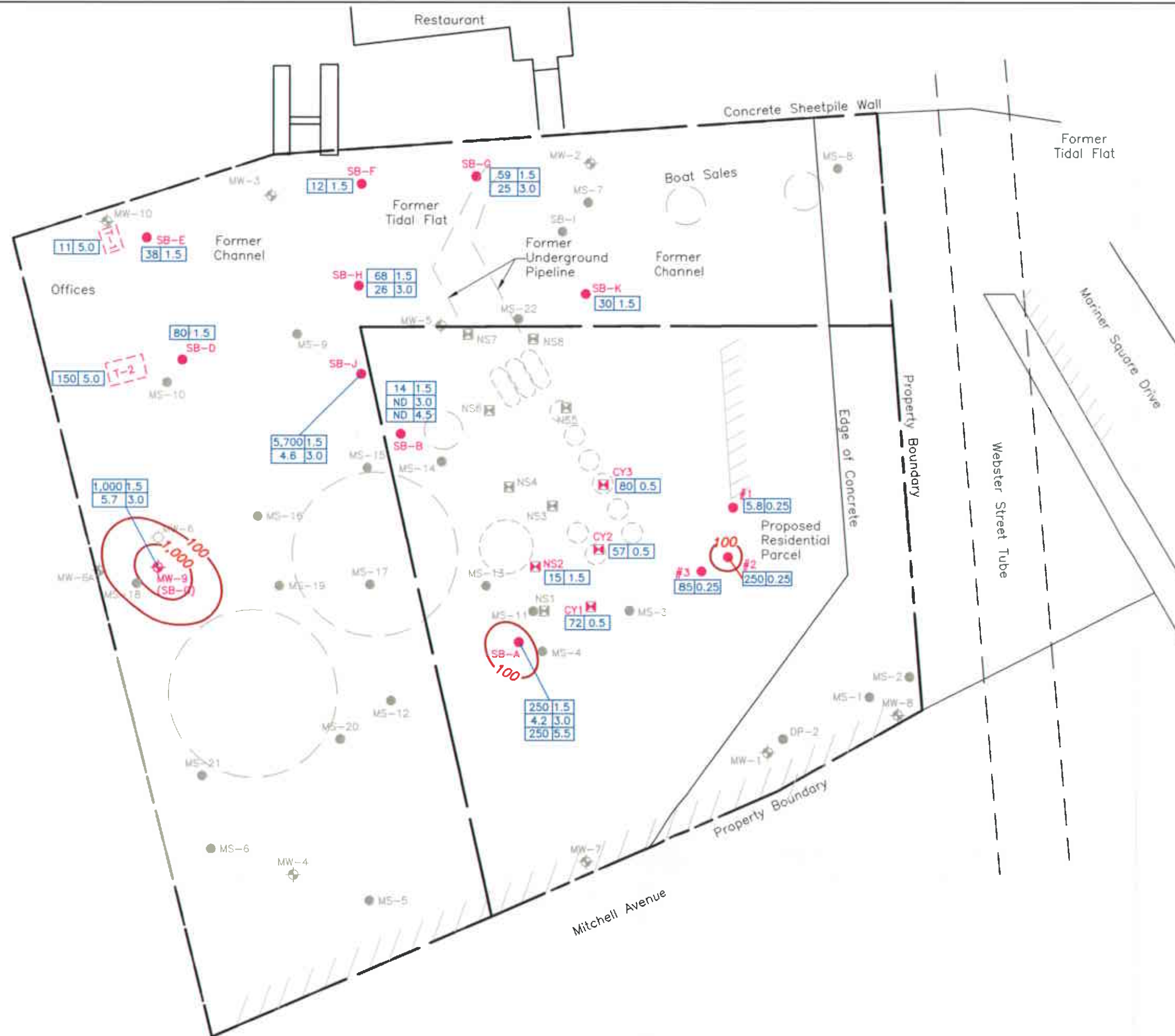


Figure F  
 Lead Concentrations in Soil  
 Mariner Square  
 Alameda, California