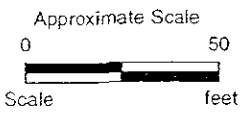


**LEGEND**

- ⊕ - Approximate location of exploratory boring (Lowney Associates, 2002)
  - - Approximate location of exploratory soil boring (Lowney Associates, 2002)
  - - Approximate location of exploratory test pit (Lowney Associates, 2002)
  - ▩ - Approximate location of exploratory test pit (R.T. Hicks, 2001)
  - ⊙ - Approximate location of exploratory boring (PES, 2000)
  - ⊗ - Approximate location of exploratory boring (Cambra, 1997)
  - ⊕ - Approximate location of exploratory boring (Lush Geosciences, 1995)
  - < - Indicates that the compound was not detected at or above the stated laboratory limit
  - - Not Analyzed
- Concentrations in parts per million (ppm)  
 Concentrations exceeding CRWQCB RBSLs are shown in bold

Depth(ft)	TPHg	TPHd	TPHmo
--	--	--	--



**TPHg, TPHd, AND TPHmo IN SOIL**  
 1300 POWELL STREET  
 Emeryville, California

**LOWNEY ASSOCIATES**  
 Environmental/Geotechnical/Engineering Services

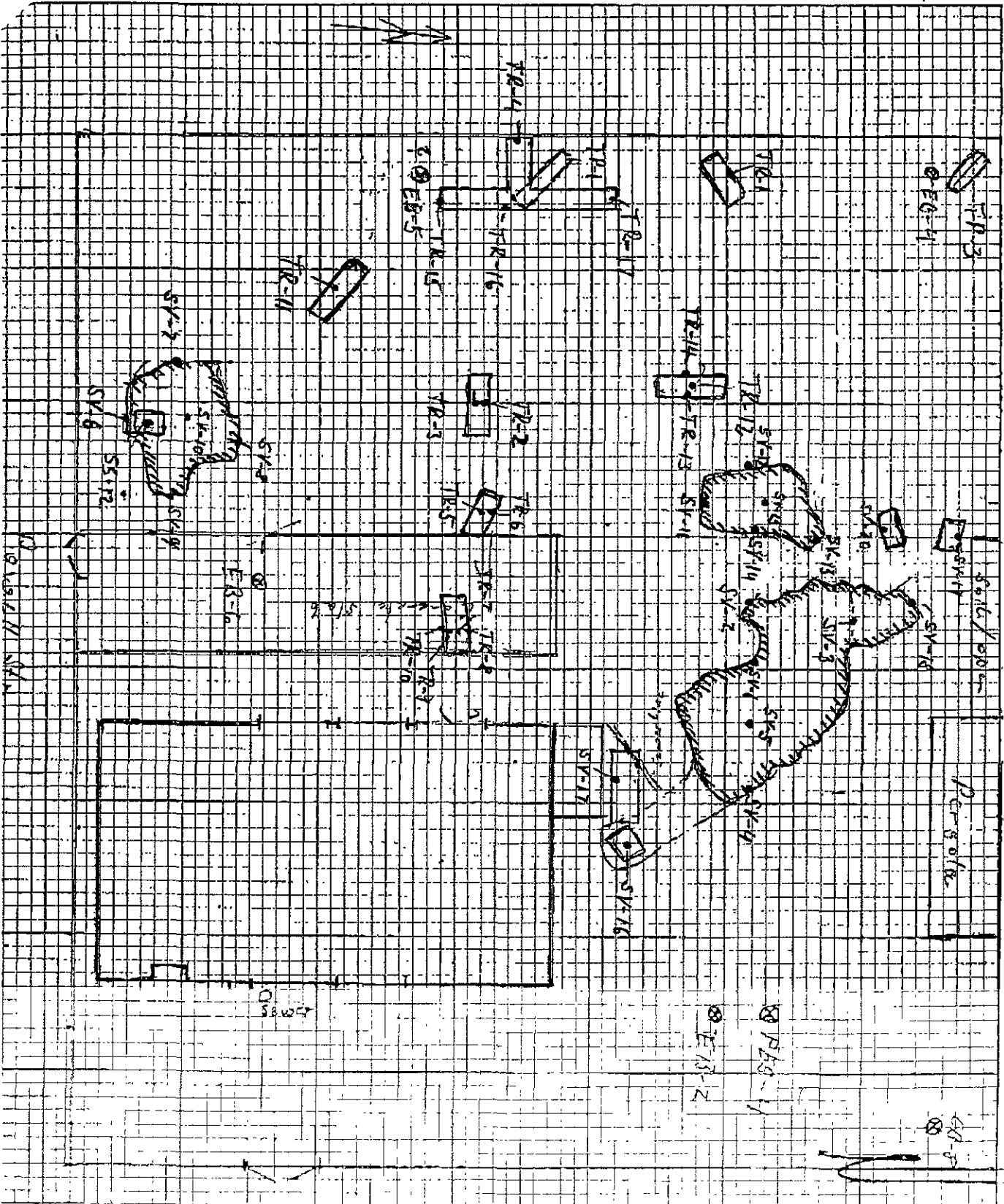
**FIGURE 3**  
 1424-9B

Base by Lush Geosciences, dated 4/95

Sheet: \_\_\_\_\_ Of \_\_\_\_\_

Date: \_\_\_\_\_

By: \_\_\_\_\_ Rev: \_\_\_\_\_



**Table 1. Analytical Results of Selected Soil Samples -  
Petroleum Hydrocarbons**  
(concentrations in parts per million)

Boring Number	Depth (feet)	TPHg	TPHd	TPHmo	Benzene	Toluene	Ethyl-benzene	Xylenes	O&G
SV-1	2	<1.0	42	260	<0.005	<0.005	<0.005	<0.005	NA
SV-2	1½	<1.0	<1.0	<50	<0.005	<0.005	<0.005	<0.005	<50
SV-3	2	<1.0	72	230	<0.005	<0.005	<0.005	<0.005	640
SV-4	2	<1.0	1.3	<50	<0.005	<0.005	<0.005	<0.005	NA
SV-5	2½	<1.0	100	740	<0.005	<0.005	<0.005	<0.005	NA
SV-6	2	NA	1.1	<50	NA	NA	NA	NA	<50
SV-7	1½	NA	61	270	NA	NA	NA	NA	330
SV-8	2	NA	9.7	6.7	NA	NA	NA	NA	370
SV-9	1½	NA	<1.0	<50	NA	NA	NA	NA	<50
SV-10	2½	NA	25	220	NA	NA	NA	NA	350
SV-11	1½	NA	81	360	NA	NA	NA	NA	NA
SV-12	2	NA	42	380	NA	NA	NA	NA	NA
SV-13	2	NA	41	250	NA	NA	NA	NA	NA
SV-14	2	NA	<1.0	<50	NA	NA	NA	NA	NA
SV-15	2½	NA	13	140	NA	NA	NA	NA	NA
SV-16	3	<1.0	17	93	<0.005	0.005	<0.005	<0.005	NA
SV-18	1	1.8	8.8	<50	<0.005	0.005	<0.005	<0.005	120
TR-1	6	78	310	<500	<0.62	<0.62	<0.62	<0.62	NA
TR-2	6	NA	1,900	<1,000	NA	NA	NA	NA	NA
TR-4	6½	NA	700	<500	NA	NA	NA	NA	NA
TR-6	7½	NA	2,100	14,000	NA	NA	NA	NA	NA
TR-8	7½	NA	2,900	7,800	NA	NA	NA	NA	NA
TR-13	7	NA	140	750	NA	NA	NA	NA	NA
TR-15	7½	NA	18	<50	NA	NA	NA	NA	NA
TR-16	7½	NA	2,100	<1,000	NA	NA	NA	NA	NA
TR-17	7½	NA	820	<500	NA	NA	NA	NA	NA
SP(1-4)	--	<1.0	210	590	<0.005	<0.005	<0.005	<0.005	NA
SP(5-8)	--	93	670	<500	<0.62	<0.62	<0.62	<0.62	NA
Residential PRG*		NE	NE	NE	0.65	520	230	210	--
Residential RBSL**		100	100	500	0.045	2.6	2.5	1.0	--

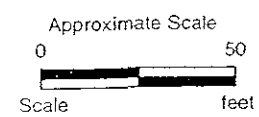
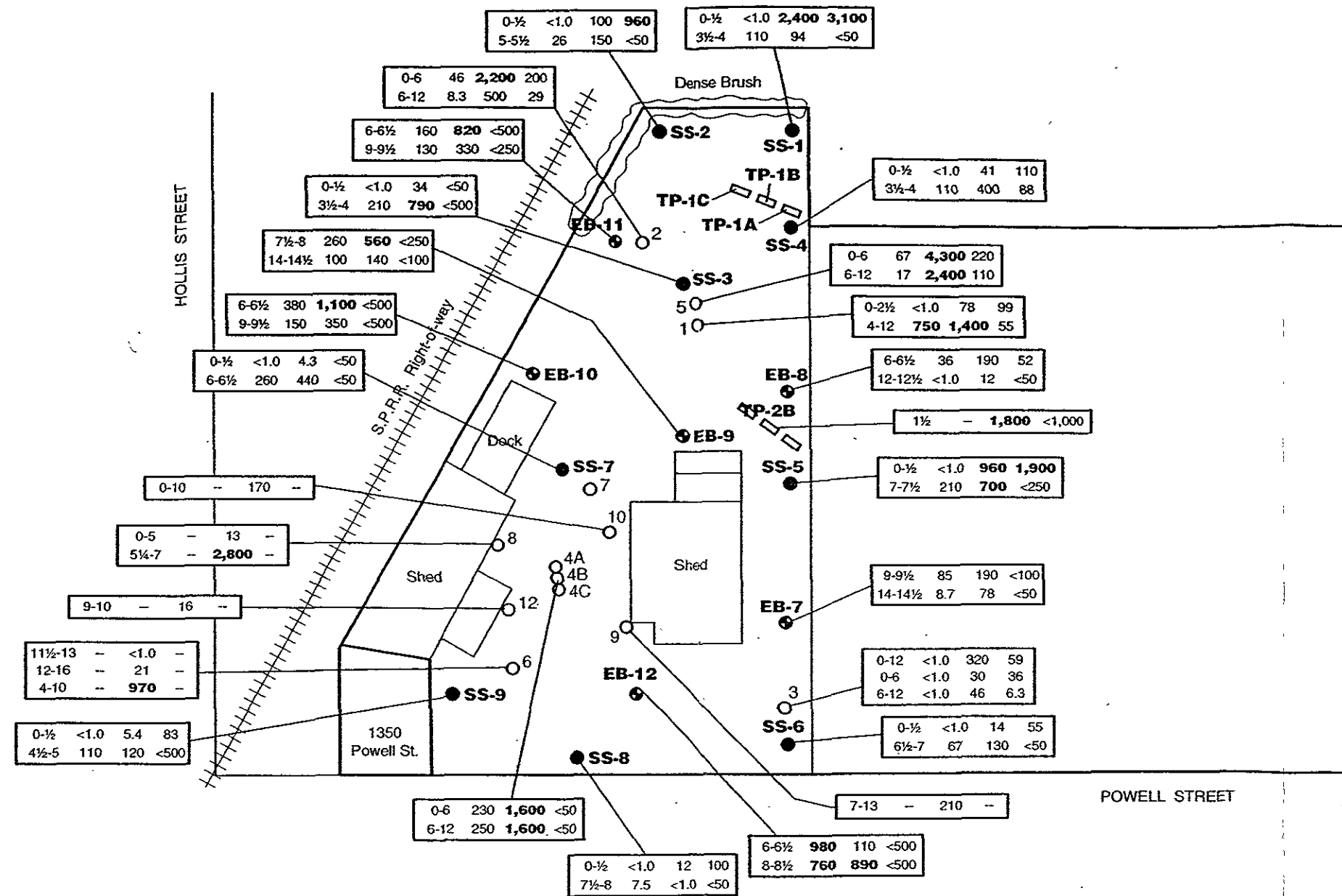
< Indicates that the compound was not detected at or above the stated laboratory reporting limit

\* Preliminary Remediation Goal (PRG)-EPA Region 9, 2000

\*\* Risk Based Screening Level (RBSL), CRWQCB, August 2000

NA Not Analyzed

NE Not established



**LEGEND**

- - Approximate location of exploratory boring (Lowney Associates, 2002)
  - - Approximate location of exploratory soil boring (Lowney Associates, 2002)
  - - Approximate location of exploratory test pit (Lowney Associates, 2002)
  - - Approximate location of exploratory boring (R.T. H.cks. 2001)
  - - Not Analyzed
  - < - Indicates that the compound was not detected at or above the stated laboratory limit
- Concentrations in parts per million (ppm)  
Concentrations exceeding CRWQCB RBSLs are shown in bold

Depth (ft)	TPHg	TPHd	TPHmo
--	--	--	--

**TPHg, TPHd, AND TPHmo IN SOIL**

1350 POWELL STREET  
Emeryville, California

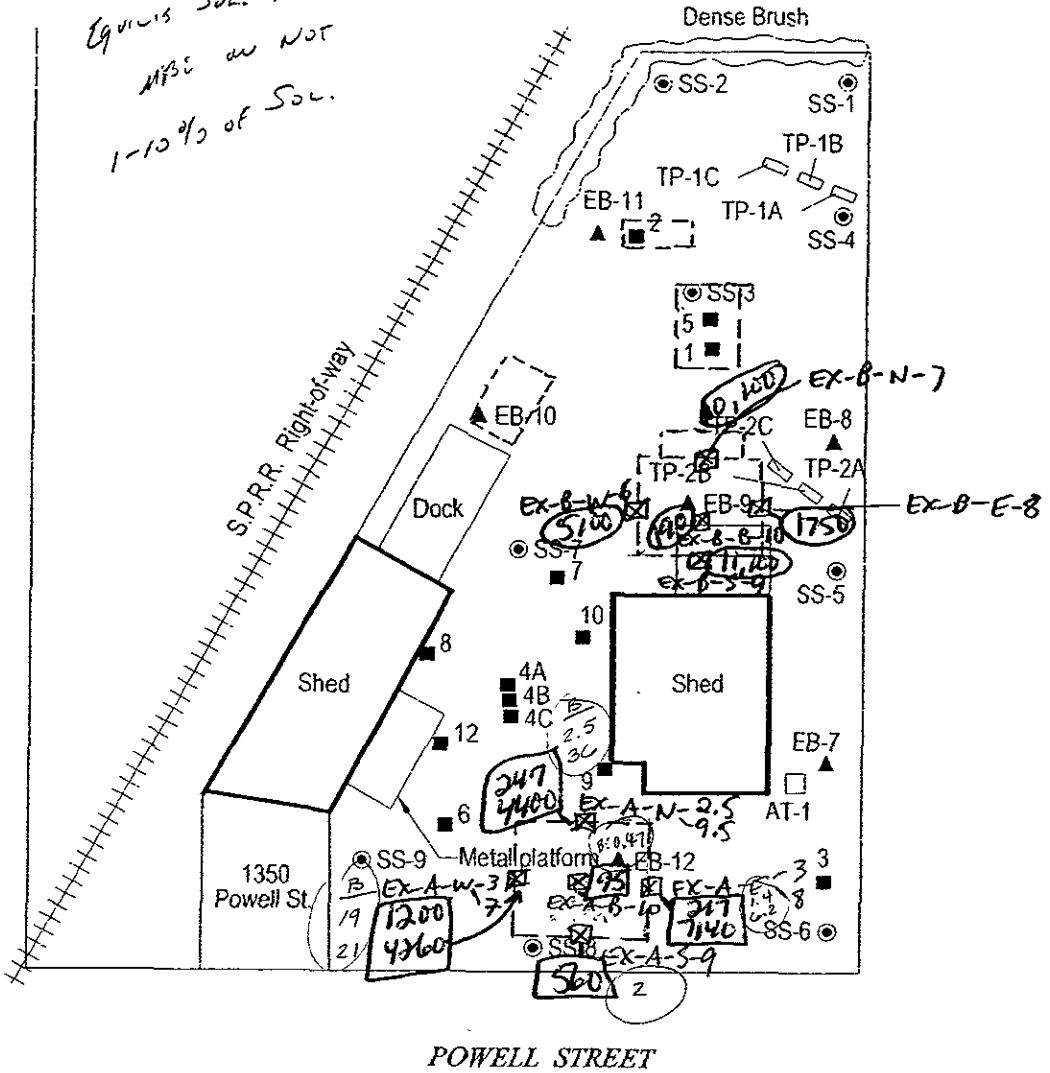
**LOWNEY ASSOCIATES**  
Environmental/Geotechnical/Engineering Services

**FIGURE 5**  
1424-9B

*Equival Sol. of PKC  
MPC or NOT  
1-10 2/3 of Sol.*

HOLLIS STREET

S.P.R.R. Right-of-way

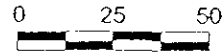


POWELL STREET

DTW: 1-7' BCS

**EXPLANATION**

- EB-11 ▲ - Approximate location of exploratory ground water boring (by Lowney)
- SS-9 ● - Approximate location of exploratory soil boring (by Lowney)
- 12 ■ - Approximate location of exploratory boring (by R T. Hicks)
- TP-1A □ - Approximate location of exploratory test pit (by Lowney)



Approx. Scale (ft)

FIGURE

**2**

Base by Lowney Associates dated 5/02

**Balaam Property**

1350 Powell Street  
Emeryville, California



C A M B R I A

*See other Results  
- Soil Sampling Samples*

**Site Plan**

# CAMBRIA

Table 1. **Soil Sidewall Sampling Analytical Data - Balaam Airgas,**  
1350 Powell Street, Emeryville, California

Sample ID (Depth - feet bgs)	Date Sampled	TPHg	TPHd	TPHmo	TPHbo	Total TPH (mg/kg)	Benzene	Toluene	Ethylbenzene	Xylenes	MTBE
		(C6-C9) (mg/kg)	(C10-C23) (mg/kg)	(C-18+) (mg/kg)	(C-10+) (mg/kg)		(mg/kg)	(mg/kg)	(mg/kg)	(mg/kg)	(mg/kg)
EPA Method:		8015m	8015	8015	8015		8021	8021	8021	8021	8021
EX-B-W-6	7/24/02	<200	4,600	1,900	5,000	<b>5,100</b>	<1	<1	<1	<1	<10
EX-B-N-7	7/24/02	<200	9,600	2,800	10,000	<b>10,100</b>	<1	<1	<1	<1	<10
EX-B-E-8	7/24/02	<100	1,900	500	1,700	<b>1,750</b>	<0.5	<0.5	<0.5	<0.5	<5.0
EX-B-S-9	7/24/02	<200	12,000	2,300	11,000	<b>11,100</b>	<1	<1	<1	<1	<10
EX-B-B-10	7/24/02	<20	200	35	180	190	<0.1	<0.1	<0.1	<0.1	<10
EX-A-W-3	7/24/02	900	330	25	300	<b>1,200</b>	19	89	29	130	<10
EX-A-W-7	7/24/02	460	3,300	520	3,800	<b>4,260</b>	21	3.6	12	14	<10
EX-A-N-2.5	7/24/02	67	200	13	180	<b>247</b>	2.5	0.26	0.39	0.37	<0.5
EX-A-N-9.5	7/24/02	2,100	2,700	<500	2,300	<b>4,400</b>	36	24	85	350	<10
EX-A-B-10	7/24/02	7.4	99	18	88	95	0.47	0.027	0.038	0.13	<0.5
EX-A-E-3	7/24/02	67	170	28	150	217	1.4	0.34	0.043	0.12	<0.5
EX-A-E-8	7/24/02	240	7,100	900	6,900	<b>7,140</b>	6.20	1.5	1.4	2.7	<10
EX-A-S-9	7/24/02	350	230	18	210	560	2.0	0.30	3.4	2.1	<2.0
Cleanup Goal						<b>1,000</b>					

## Abbreviations and Notes:

TPHg = Total petroleum hydrocarbons as gasoline

TPHd = Total petroleum hydrocarbons as diesel

TPHmo = Total petroleum hydrocarbons as motor oil

TPHbo = Total petroleum hydrocarbons as bunker oil

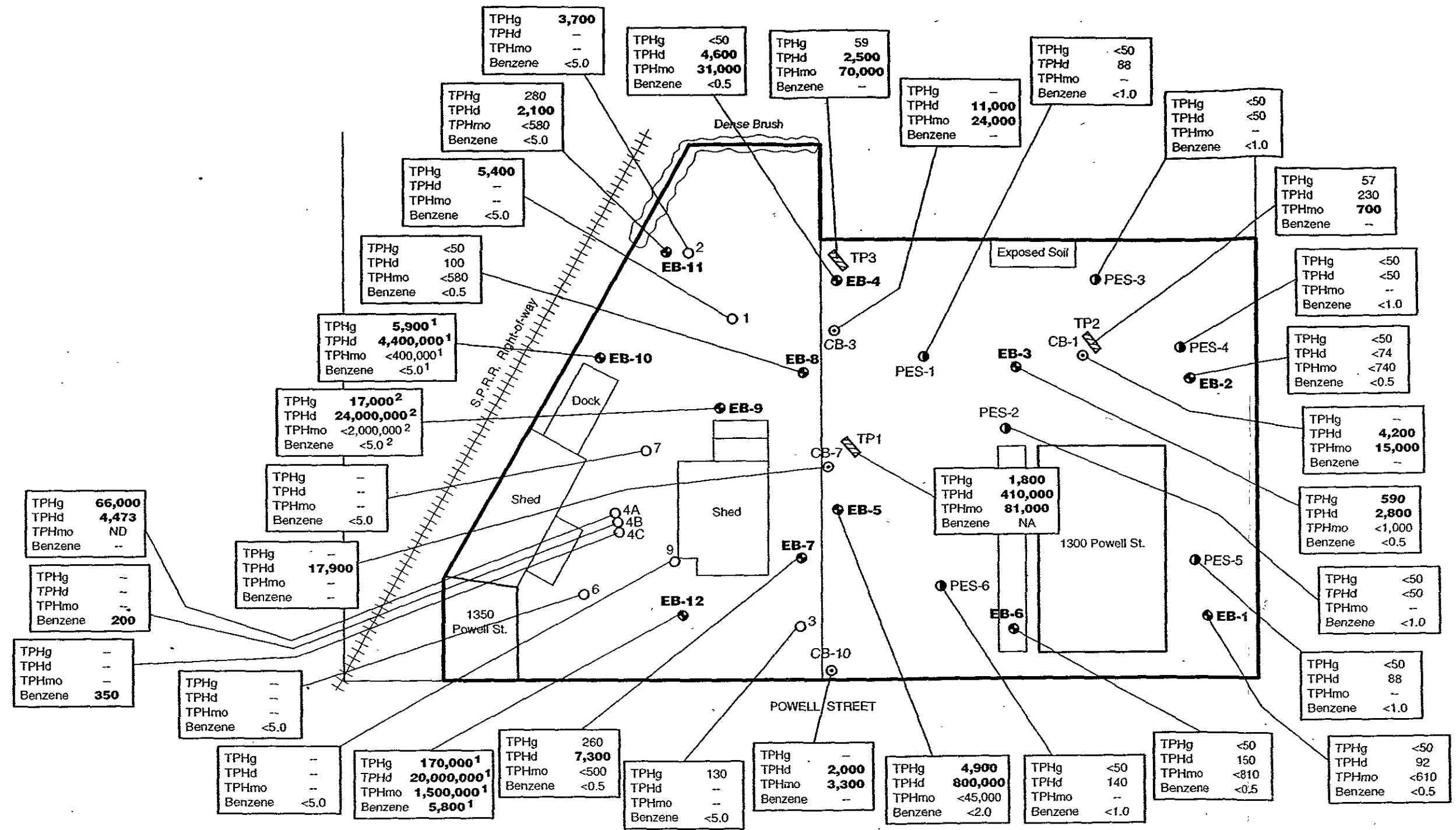
Total TPH = TPHg + TPHbo. Results below detection limits added as 1/2 the detection limit.

MTBE = Methyl tert-butyl ether

mg/kg = Milligrams per kilogram

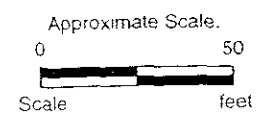
<n = Below detection limit of n mg/kg

-- = Not analyzed



**LEGEND**

- - Approximate location of exploratory boring (Lowney Associates, 2002)
- - Approximate location of exploratory boring (R T. Hicks, 2001)
- ⊞ - Approximate location of exploratory test pit (R T. Hicks, 2001)
- ⦿ - Approximate location of exploratory boring (PES, 2000)
- ⊙ - Approximate location of exploratory boring (Cambria, 1997)
- - Not Analyzed
- ND - Not detected at or above laboratory reporting limit
- Concentrations in parts per billion (ppb)
- Concentrations exceeding CRWQCB RBSLs are shown in bold
- <sup>1</sup> Free product observed on ground water
- <sup>2</sup> Fuel sheen observed on ground water



**TPHg, TPHd, TPHmo, AND BENZENE  
IN GROUND WATER**

1300 AND 1350 POWELL STREET  
Emeryville, California

<b>LOVNEY ASSOCIATES</b> Environmental/Geotechnical/Engineering Services	<b>FIGURE 7</b> 1424-9B
---	----------------------------

Base by Lush Geosciences dated 4/95