

RECEIVED

By Alameda County Environmental Health at 9:10 am, May 01, 2013



Owens-Illinois, Inc.
One Michael Owens Way
Perrysburg, Ohio 43552
www.o-i.com

April 30, 2013

Mr. Paresh Khatri
Alameda County Health Care Services
Environmental Health Services
1131 Harbor Bay Parkway
Alameda, CA 94502-6577

**Subject: RO0000289
2013 ANNUAL GROUNDWATER MONITORING REPORT,
OWENS-BROCKWAY GLASS CONTAINER FACILITY.
3600 ALAMEDA AVENUE, OAKLAND, CALIFORNIA.**

Dear Mr. Khatri

Owens-Brockway Glass Container Corporation is pleased to submit the attached 2013 Annual Groundwater Monitoring Report for the above site.

I declare under penalty of perjury that the information and recommendations contained in the attached report are true and correct to the best of my knowledge.

If you need further information feel free to call me at (567) 336-8682.

Sincerely,

Mark Tussing.
Manager, Environmental Affairs

**2013 GROUNDWATER MONITORING
REPORT**

**OWENS-BROCKWAY
GLASS CONTAINER FACILITY
OAKLAND, CALIFORNIA**



CKG Environmental, Inc.

P.O. Box 246
St. Helena, CA 94574

A Report Prepared for:

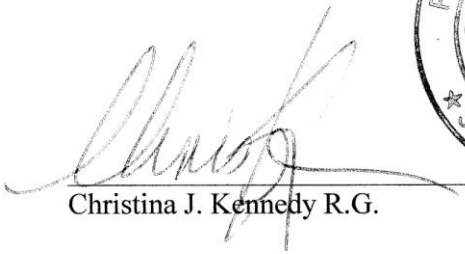
Mr. Mark Tussing
Environmental Affairs
One Michael Owens Way
Perrysburg, OH 43551-2999

**2013 GROUNDWATER MONITORING
REPORT**

**OWENS-BROCKWAY GLASS CONTAINER FACILITY,
OAKLAND, CALIFORNIA**

April 30, 2013

Prepared by:



Christina J. Kennedy R.G.



Principal

CKG Environmental, Inc.
P.O. Box 246
St. Helena, California 94574
(707) 967-8080

TABLE OF CONTENTS

1.0 EXECUTIVE SUMMARY1

2.0 INTRODUCTION.....2

 2.1 SITE DESCRIPTION 2

3.0 GROUNDWATER MONITORING3

 3.1 GROUNDWATER GRADIENT 3

 3.2 WELL SAMPLING 3

 3.3 CHEMICAL ANALYSIS 4

 3.4 INVESTIGATION DERIVED WASTES (IDW) 4

4.0 FINDINGS5

 4.1 SUMMARY OF GROUNDWATER RESULTS 5

 4.1.1 Fuel Oil Release Area (MW-1, MW-5, MW-6, MW-7, MW-8, MW-10, MW-19) 5

 4.1.2 Gasoline Release Area (MW-13, MW-15, MW- 16, MW17, MW-20)..... 5

5.0 CONCLUSIONS AND RECOMMENDATIONS.....6

 5.1 CONCLUSIONS 6

 5.2 RECOMMENDATIONS 6

6.0 REFERENCES.....7

LIMITATIONS.....8

TABLES

- Table 1 Monitoring Well Construction Details
- Table 2 Groundwater Elevations
- Table 3 Summary of Groundwater Analytical Results

PLATES

- Plate 1 Site Location Map
- Plate 2 Groundwater Elevation Contour Map
- Plate 3 Fuel Oil Distribution Map

APPENDICES

- Appendix A Well Sampling Logs
- Appendix B Analytical Laboratory Report

1.0 EXECUTIVE SUMMARY

The Owens-Brockway glass manufacturing facility is located at 3600 Alameda Avenue in Oakland, California. The site is located to the north of the Oakland Estuary with Fruitvale Avenue to the west, a Home Depot to the east and residences to the north. Onsite facilities include the operating glass manufacturing plant, warehouses, offices and two former underground fuel storage tank areas.

Two underground fuel storage tank (UST) areas existed at the Oakland plant. The first UST area was located on the west side of the plant and included three fuel oil USTs. Impacts by fuel oil to the subsurface were observed when the associated USTs were removed. The second UST area was located near the central part of the plant adjacent to the compressor building. Originally there were four USTs in this area. When they were removed and replaced by two new USTs, a gasoline release to the subsurface was observed.

CKG compiled all the historic data for the site and completed a Cone Penetration Test (CPT) subsurface investigation and installed one offsite monitoring well. This data was used to refine our understanding of the distribution of petroleum hydrocarbons at the site and to evaluate the UST releases with respect to potential closure. A round of groundwater monitoring also was completed to comply with regulatory requirements and to evaluate the existence and distribution of the various types of petroleum hydrocarbons potentially present on and off site. In August 2009 a subsurface investigation was completed to address data gaps identified in a Site Conceptual Model (SCM) prepared in April 2009. The subsurface investigation and groundwater monitoring, and a review of historic data, shows that the petroleum hydrocarbon plumes are stable and have attenuated substantially over time. The fuel oil release appears to extend off site.

Based on the SCM a Feasibility Study dated August 27, 2010 was completed. The recommended remediation option was targeted excavations at fuel source areas with chemical oxidant placed in the excavations before backfilling. The targeted excavation program was partially implemented in summer of 2011. The full program could not be completed due to logistical issues associated with working at an operating plant. CKG recommends that Owens-Brockway submit this report to the Alameda County Health Agency.

2.0 INTRODUCTION

The following report presents the results and conclusions of the annual of groundwater monitoring in 2013. The work was performed in general accordance with CKG's proposal dated November 15, 2002 with slight modifications as discussed below.

2.1 SITE DESCRIPTION

The Owens-Brockway glass manufacturing facility is located at 3600 Alameda Avenue in Oakland, California, (Plate 1). The site is located to the north of the Oakland Estuary with Fruitvale Avenue to the west, a former retail center to the east and residences to the north. Onsite facilities include the operating glass manufacturing plant, warehouses, offices and two former underground fuel storage tank areas, (Plate 2).

Fuel Oil USTs

One UST site was located on the west side of the plant and included three former USTs, which were used to contain fuel oil. At the time these USTs were removed it was discovered that fuel oil had been released to the subsurface. Owens-Brockway excavated impacted soil at the time the USTs were removed. Floating product associated with the fuel oil release exists and past efforts to remove it have been unsuccessful. This lack of success is mainly due to the clay rich nature of the subsurface and the viscosity of the product. Groundwater monitoring has been ongoing sporadically for the last 17 years. A Geoprobe™ investigation completed in 1999 by Kennedy/Jenks Consultants included collecting groundwater samples from five locations off-site in the downgradient direction. Three of these samples were found to contain petroleum hydrocarbons. This petroleum hydrocarbon was identified to be Stoddard solvent, not fuel oil.

Gasoline USTs

The second UST area was located near the central part of the plant adjacent to the compressor building. Originally there were four USTs in the area. When they were removed and replaced by two new USTs a gasoline release to the subsurface was observed. Owens-Brockway excavated impacted soil at the time the USTs were removed. Groundwater monitoring has shown that the gasoline release has attenuated naturally.

3.0 GROUNDWATER MONITORING

3.1 GROUNDWATER GRADIENT

Depth to groundwater measurements were made on March 22 2013, before the monitoring wells were sampled. Depth to static ground water was measured from a marked location at the top of the PVC casing. The depth of water was then subtracted from the elevation of the top of the well casing to provide a ground water elevation for each monitoring well. Plate 2 shows groundwater elevations and the interpreted groundwater flow direction. Based on the data measured on March 22, 2013 the groundwater flow direction is generally to the south-southwest. This groundwater flow direction has been observed in past monitoring events. To prepare for the remediation work completed in the summer of 2011 CKG properly closed MW-2. Monitoring well construction details are presented in Table 1. Depth to water measurements and groundwater elevations are summarized in Table 2. Well sampling and purge logs are contained in Appendix A.

3.2 WELL SAMPLING

On March 22, 2012 a round of groundwater sampling in the monitoring wells was performed. Floating product was observed in MW-5, MW-6, and MW-7 so they were not sampled. Separate phase product also was observed in MW-15, which has typically been a less impacted well, so it was not sampled. MW-1 was buried under cullet (waste glass) so it could not be accessed. MW-9, which is located in the middle of the loading ramp, could not be safely accessed.

The wells were sampled using the following protocol.

- The depth-to-water was measured using a conductivity-based water level indicator.
- The volume of water standing in each well was calculated by subtracting the depth-to-water measurement from the total depth of the well, and multiplying by the appropriate volume conversion factor.
- A minimum of three well volumes of water was purged from each well using a centrifugal pump. A total of 10 purge volumes was removed from MW-13. The pump was decontaminated prior to use in each well by washing with TSP and rinsing with distilled water. Fresh tubing was used for each well

- Physical parameters of pH and temperature were monitored for stability during purging.
- Sample bottles, provided by the analytical laboratory were filled from a new clean disposable bailer at each well.
- Samples were immediately labeled and placed in an iced sample container. The samples were picked up by the analytical laboratory, under chain-of-custody control the following day.

3.3 CHEMICAL ANALYSIS

Groundwater samples were submitted under chain-of-custody to McCampbell Analytical Laboratory in Pacheco, California. McCampbell is a laboratory certified with the California Department of Health Services under the California Environmental Laboratory Accreditation Program (ELAP) for the requested analyses. The analytical program was completed in general accordance with CKG's proposal dated November 15, 2002. The chemical analyses performed include the following:

- Total Petroleum Hydrocarbons quantified as diesel, (TPHd,) motor oil (TPHmo) and gasoline (TPHg) by Modified EPA Method 8015 and;
- Benzene, Toluene, Ethylbenzene, xylenes, and MTBE by EPA Method 8020

3.4 INVESTIGATION DERIVED WASTES (IDW)

Investigation derived wastes (IDW) were generated during the investigation and included purge water. Purge water was placed into the on-site oil/water separator system.

4.0 FINDINGS

The following describes the results of the annual groundwater monitoring at the Owens-Brockway Glass Container facility in Oakland, California. Comparisons are made between the data and appropriate regulatory standards and risk based screening levels where they are available. Groundwater sample results are presented in Table 3. Analytical laboratory reports are included in Appendix B. Sample locations and pertinent data are presented on Plate 3.

4.1 SUMMARY OF GROUNDWATER RESULTS

4.1.1 Fuel Oil Release Area (MW-1, MW-5, MW-6, MW-7, MW-8, MW-10, MW-19)

Petroleum hydrocarbons quantified as diesel/fuel oil, were detected in all of the water samples collected as summarized in Table 3, except for MW-20. Diesel concentrations are shown and contoured on Plate 3. Separate phase floating product was observed in MW-5, MW-6, MW-7 and MW-15, as shown on Table 2 and Plate 2, so they were not sampled. TPHd concentrations detected in groundwater range from 88 to 3100 µg/l. Absorbent socks are installed in MW-5, MW-6, and MW-7. Owens-Brockway regularly changes the socks. The estimated outline of the product plume is illustrated on Plate 3.

4.1.2 Gasoline Release Area (MW-13, MW-15, MW- 16, MW17, MW-20)

Petroleum hydrocarbons quantified as gasoline, were detected in one water sample as summarized in Table 3. TPHg was detected in MW-17 at 4,500 µg/l which is comparable to that observed over the last few years, and likely reflects the very high concentration of diesel present in the well as opposed to the presence of gasoline in the groundwater. TPH quantified as diesel/motor oil was detected at MW-17 at 570,000 µg/l which was higher than that observed in 2012. An absorbent sock has been maintained in MW-17 since 2008.

Owens-Brockway had installed absorbent socks in MW-13, MW-15, and MW-20, as part of their general well maintenance. On March 3 the sock in MW-15 appeared to be stained and separate phase product was measured in MW-15. This was the first time that separate phase product had been observed in MW-15.

5.0 CONCLUSIONS AND RECOMMENDATIONS

On the basis of the annual monitoring the following conclusions and recommendations can be made:

5.1 CONCLUSIONS

The recent groundwater monitoring, as well as a review of historic data, shows that the petroleum hydrocarbon plumes at the site are stable and have attenuated over time. The fuel oil release appears to extend off site.

5.2 RECOMMENDATIONS

CKG recommends that Owens-Brockway submit this report to the Alameda County Health Agency.

6.0 REFERENCES

California Regional Water Quality Control Board – San Francisco Bay region, Order No 99-045, 1999

CKG Environmental, Inc. Groundwater Monitoring Reports,
2012 Report, April 22, 2012.
2010 Report, January 20, 2011.
2009 Report, January 10, 2010.
2008 Report, January 8, 2009.
2007 Report, December 17, 2007.
2006 Report, January 12, 2007.
2005 Report, November 29, 2005.
2004 Report, April 29, 2004.

CKG Environmental, Inc. 2005, Work Plan to Prepare a Site Conceptual Model, Owens-Brockway Glass Container Facility, Oakland, California. April 6, 2005.

CKG Environmental, Inc. Summary of Remediation History and Groundwater Impact by Petroleum Hydrocarbons, Owens-Brockway Glass Container Facility, 3600 Alameda Avenue, Oakland, California. April 4, 2003.

CKG Environmental, Inc. Work Plan to Install One Monitoring Well and Assess the Distribution of Petroleum Hydrocarbons, Owens-Brockway Glass Container Facility, Oakland, California, April 22, 2003.

CKG Environmental, Inc. Data Compilation and Closure Report Underground Fuel Storage Tank Locations, Owens-Brockway Glass Container Facility, Oakland, California, November 4, 2003.

Exeltech, Soil and Groundwater Contamination Investigation for Owens-Illinois Glass Container Division, 3600 Alameda Avenue, Oakland, California, December 1986.

Exeltech, Soil and Groundwater Contamination Investigation for Owens-Illinois Glass Container Division, 3600 Alameda Avenue, Oakland, California, February 1987.

Kennedy/Jenks, Consultants. Groundwater investigation Report, Owens-Brockway Glass Containers, February 16, 1999.

Kennedy/Jenks, Consultants. Annual Groundwater Monitoring Report, Owens-Brockway Glass Containers, January 21, 2003.

LIMITATIONS

CKG Environmental, Inc. prepared this report in accordance with generally accepted standards of care, which exist in Northern California at this time. It should be recognized that definition and evaluation of geologic and environmental conditions is a difficult and an inexact science.

Conclusions and recommendations presented in this report are based on the results of the scope of work presented in our proposal dated November 15, 2002. This scope of work includes groundwater sampling at total of 10 wells, and quantitative analysis of groundwater samples conducted by McCampbell Analytical. Only work described herein was performed. As such CKG cannot render opinions on issues not resulting directly from the work performed.

Judgments leading to conclusions and recommendations are generally made with incomplete knowledge of the subsurface conditions present. More extensive studies, including additional subsurface investigations, may be performed to reduce uncertainties. If the client wishes to reduce the uncertainties of this investigation, CKG should be notified for additional consultation. No warranty, expressed or implied, is made.

This report may be used only by the client and only for the purposes stated, within a reasonable time from its issuance. Land use, site conditions (both onsite and offsite) or other factors may change over time, and additional work may be required with the passage of time. Any party other than the client who wishes to use this report shall notify CKG of such intended use. Based on the intended use of the report, CKG may require that additional work be performed and that an updated report be issued. Non-compliance with any of these requirements by the client or anyone else will release CKG from any liability resulting from the use of this report by any unauthorized party.

TABLES

Table 1 Summary of Well Construction Details

Well Number	Date Installed	Top of Casing Elevation ^(a)	Top of Screen ^(b)	Screen Length	Well Depth ^(c)	Casing Diameter (inches)	Comments
MW-1	9/12/1986	16.02	8	21	29	2	
MW-2	12-Sep-86	17.11	10	20	30	2	Destroyed
MW-3	12-Sep-86	15.46	10	20	39	2	Destroyed
MW-4	12-Sep-86	16.02	8.5	20	28.5	2	Destroyed
MW-5	12-Sep-86	16.19	8.5	20	28.5	2	
MW-6	12-Sep-86	17.48	12.5	16	28.5	2	
MW-7	12-Sep-86	16.11	12.5	11	23.5	2	
MW-8	12-Sep-86	16.57	15	13.5	28.5	2	
MW-9	12-Sep-86	7.33 ^(d)	5	10	20	2	
MW-10	12-Sep-86	15.96	10	15	25	2	
MW-11	12-Sep-86	13.99	10	20	30	2	
MW-12	12-Sep-86	13.83	11	15	26	2	
MW-13	12-Sep-86	13.98	9.5	15	24.5	2	
MW-14	12-Sep-86	14.78	10	15	25	2	Destroyed
MW-15	12-Sep-86	15.16	9.5	20	29.5	2	
MW-16	12-Sep-86	13.48	10	14.5	24.5	2	
MW-17	12-Sep-86	14.17	9.5	15	24.5	2	
MW-18	12-Sep-86	14.89	9	15	24	2	Destroyed
MW-19	01-May-03	NA	10	15	25	2	
MW-20	01-Dec-00	12.74	6.9	15	21.9	2	
R-1	1987	NM ^(e)	NA ^(f)	NA	24	36	Destroyed
R-2	1989	NM	NA	NA	NA	12	Destroyed

(a) Top of casing elevation (TOCE) except where noted; measured in feet above US Coast and Geodetic Datum (mean sea level). Elevations measured by Exceltech in 1986, and by PLS Surveys for MW-20 in 2000.

(b) Depth to top of screened interval (feet below top of casing)

(c) Depth to bottom of screened interval (feet below top of casing)

(d) Well casing was not measured for this well; well is located beneath forklift ramp and this measurement is the ground surface elevation in MSL.

(e) NM = Not measured

(f) NA = Not available

Table 2 Groundwater Depths and Elevation March 22, 2013

Well Number	Date Installed	Top of Casing Elevation ^(a)	Depth to Water	Product thickness (ft)*	Groundwater Elevation
MW-1	12-Sep-86	16.02	NM		
MW-2	12-Sep-86	17.11	NM		
MW-4	12-Sep-86	16.02	NM		
MW-5	12-Sep-86	16.19	11.98	0.03	4.24
MW-6	12-Sep-86	17.48	14.42	0.02	3.08
MW-7	12-Sep-86	16.11	12.40	0.02	3.73
MW-8	12-Sep-86	16.57	9.40		7.17
MW-9	12-Sep-86	7.33 ^(d)	NM		
MW-10	12-Sep-86	15.96	9.93		6.03
MW-11	12-Sep-86	13.99	NM		
MW-12	12-Sep-86	13.83	NM		
MW-13	12-Sep-86	13.98	9.39		4.59
MW-15	12-Sep-86	15.16	11.91	0.01	3.26
MW-16	12-Sep-86	13.48	9.52		3.96
MW-17	12-Sep-86	14.17	9.21		4.96
MW-19	01-May-03	NA	11.56		
MW-20	01-Dec-00	12.74	8.25		4.49

(a) Top of casing elevation (TOCE) except where noted; measured in feet above US Coast and Geodetic Datum (mean sea level). Elevations measured by Exceltech in 1986, and by PLS Surveys for MW-20 in 2000.

(d) Well casing was not measured for this well; well is located beneath forklift ramp and this measurement is the ground surface elevation in MSL.

(e) NM = Not measured

(f) NA = Not available

* In the case where separate phase product is measured, groundwater elevation is corrected assuming a fuel oil with product density of 0.893

**Table 3 Summary of Groundwater Analytical Results
Owens-Brockway Glass Container Facility, Oakland, CA**

	Date	B	T	E	X	TPHd	TPHg	TOG/TPHmo
MW-1	9/23/1986	<10	<10	NA	<10	<.01	<.01	25,000
	4/9/1987	<10	<10	NA	<10	<.01	NA	NA
	9/16/1987	not accessible						
	12/1/1987	not accessible						
	3/7/1988	not accessible						
	6/8/1988	not accessible						
	9/14/1988	not accessible						
	9/16/1997	<0.5	<0.5	<0.5	<0.5	190 ^(a)	<50	NA
	11/2/1998	<0.5	<0.5	<0.5	<0.5	160 ^(a)	<50	NA
	12/11/2001	not accessible						
	12/6/2002	<0.5	<0.5	<0.5	<0.5	69 ^(a)	<50	NA
	3/15/2004	not accessible						
	6/30/2005	not accessible						
	10/19/2006	<0.5	<0.5	<0.5	<0.5	5400	120	3300
	10/17/2007	not accessible						
	10/21/2008	<0.5	<0.5	<0.5	<0.5	2000	69	1300
	10/16/2009	<0.5	<0.5	<0.5	<0.5	310	<50	310
10/29/2010	<0.5	<0.5	<0.5	<0.5	100	<50	<250	
3/1/2012	<0.5	<0.5	<0.5	<0.5	92	<50	<250	
3/22/2013	not accessible							
MW-2	4/9/1987	floating product						
	9/16/1987	floating product						
	12/1/1987	floating product						
	3/7/1988	floating product						
	6/8/1988	floating product						
	9/14/1988	floating product						
	9/16/1997	floating product						
	11/2/1998	floating product						
	12/11/2001	floating product						
	12/6/2002	floating product						
	3/15/2004	floating product						
	6/30/2005	<0.5	<0.5	<0.5	<0.5	1,600,000	2900	1,200,000
	9/11/2006	<2.5	4.4	19	60	830,000	13000 ^(b)	530,000
	10/17/2007	floating product (1.25 feet)						
	10/21/2008	floating product						
10/16/2009	floating product							
10/29/2010	floating product (1.25 feet)							
3/1/2012	Destroyed May 2011							

NOTES:

- TPH-g - Total Petroleum Hydrocarbons as Gasoline in ug/l B - Benzene in ug/l X - Xylenes in ug/l
 TPH-d - Total Petroleum Hydrocarbons as Diesel in ug/l T - Toluene in ug/l E - Ethylbenzene in ug/l
 TOG - Total Oil and Grease in ug/l TPHmo - Total Petroleum Hydrocarbons as Motor Oil ug/l (after 2004)
 BDL - Below detection limit NA - Not analyzed
 (a) - Quantified as diesel but chromatogram did not match diesel pattern
 (b) - Quantified as gasoline but chromatogram did not match gasoline pattern

**Table 3 Summary of Groundwater Analytical Results
Owens-Brockway Glass Container Facility, Oakland, CA**

	Date	B	T	E	X	TPHd	TPHg	TOG/TPHmo
MW-3	9/23/1986	<10	<10	NA	<10	NA	<10	18
	4/9/1987	BDL	BDL	NA	BDL	NA	370	NA
	9/16/1987	floating product						
	12/1/1987	floating product						
	3/7/1988	NA	NA	NA	NA	190,000	NA	NA
	6/8/1988	NA	NA	NA	NA	16,000	NA	NA
	9/14/1988	floating product Destroyed						
MW-4	9/23/1986	<5	<5	NA	<5	NA	20	7,200
	4/9/1987	BDL	BDL	NA	BDL	NA	BDL	NA
	9/16/1987	BDL	BDL	NA	BDL	660	1.3	NA
	12/1/1987	BDL	BDL	NA	8.9	100	BDL	NA
	3/7/1988	BDL	BDL	NA	BDL	BDL	BDL	NA
	6/8/1988	BDL	BDL	NA	BDL	BDL	BDL	NA
	9/14/1988	BDL Destroyed	BDL	NA	BDL	100	BDL	NA
MW-5	10/3/1986	<5	<5	NA	6.6	NA	1400	24,000
	4/9/1987	<5	<5	NA	<5	NA	54	NA
	9/16/1987	NA	NA	NA	NA	960	NA	NA
	12/1/1987	NA	NA	NA	NA	2000	NA	NA
	3/9/1988	NA	NA	NA	NA	<50	NA	NA
	6/8/1988	NA	NA	NA	NA	12,000	NA	NA
	9/14/1988	NA	NA	NA	NA	6,300	NA	NA
	9/16/1997	<0.5	<0.5	<0.5	<0.5	11,600	<50	NA
	11/2/1998	floating product						
	12/6/2000	<0.5	<0.5	<0.5	<0.5	11,700 ^(a)	1000	NA
	12/12/2001	<0.5	<0.5	<0.5	<0.5	10,000 ^(a)	360 ^(b)	NA
	12/6/2002	<0.5	<0.5	<0.5	<0.5	5,200 ^(a)	150 ^(b)	NA
	3/15/2004	<0.5	<0.5	<0.5	<0.5	46,000 ^(a)	180 ^(b)	NA
	6/30/2005	<0.5	<0.5	<0.5	<0.5	34,000	100	26,000
	9/11/2006	<0.5	<0.5	<0.5	<0.5	45,000	300 ^(a)	33,000
	10/17/2007	<0.5	<0.5	<0.5	<0.5	34,000	120	31,000
	10/21/2008	<0.5	<0.5	<0.5	<0.5	13,000	150	11,000
10/16/2009	<0.5	<0.5	<0.5	<0.5	160,000	180	140,000	
10/29/2010	floating product (0.04 ft)							
3/1/2012	<0.5	<0.5	<0.5	<0.5	8,600	190	8,900	
3/22/2013	floating product (0.03 ft)							

NOTES:

TPH-g - Total Petroleum Hydrocarbons as Gasoline in ug/l

B - Benzene in ug/l

X - Xylenes in ug/l

TPH-d - Total Petroleum Hydrocarbons as Diesel in ug/l

T - Toluene in ug/l

E - Ethylbenzene in ug/l

TOG - Total Oil and Grease in ug/l

TPHmo - Total Petroleum Hydrocarbons as Motor Oil ug/l (after 2004)

BDL - Below detection limit

NA - Not analyzed

(a) - Quantified as diesel but chromatogram did not match diesel pattern

(b) - Quantified as gasoline but chromatogram did not match gasoline pattern

**Table 3 Summary of Groundwater Analytical Results
Owens-Brockway Glass Container Facility, Oakland, CA**

	Date	B	T	E	X	TPHd	TPHg	TOG/TPHmo
MW-6	4/9/1987	floating product						
	9/16/1987	NA	NA	NA	NA	400,000	NA	NA
	12/1/1987	NA	NA	NA	NA	30,000	NA	NA
	3/7/1988	NA	NA	NA	NA	9,800	NA	NA
	6/8/1988	NA	NA	NA	NA	63,000	NA	NA
	9/14/1988	NA	NA	NA	NA	140,000	NA	NA
	9/16/1997	floating product						
	11/2/1998	floating product						
	12/11/2001	floating product						
	12/6/2002	floating product						
	3/15/2004	floating product						
	6/30/2005	<0.5	<0.5	<0.5	<0.5	270,000	300	200,000
	9/11/2006	<0.5	<0.5	<0.5	<0.5	100,000	700 ^(a)	77,000
	10/17/2007	<1	<1	<1	11.00	290,000	3400	190,000
	10/21/2008	<1	<1	<1	<1	38,000	330	28,000
	10/16/2009	<0.5	<0.5	<0.5	<0.5	98,000	490	89,000
	10/29/2010	floating product (0.05 ft)						
3/1/2012	floating product (0.01 ft)							
3/22/2013	floating product (0.02 ft)							
MW-7	10/3/1986	<5	<5	NA	<5	NA	260	8,000
	4/9/1987	floating product						
	9/16/1987	NA	NA	NA	NA	790,000	NA	NA
	12/1/1987	NA	NA	NA	NA	5,300	NA	NA
	3/9/1988	NA	NA	NA	NA	<50	NA	NA
	6/9/1988	NA	NA	NA	NA	12,000	NA	NA
	9/14/1988	NA	NA	NA	NA	67,000	NA	NA
	9/16/1997	<0.5	<0.5	<0.5	<0.5	37,000 ^(a)	850	NA
	11/2/1998	floating product						
	12/6/2000	<5	<.05	<.05	1.90	3,580 ^(a)	540	NA
	12/12/2001	<1	<1	<1	<1	12,600 ^(a)	1200 ^(b)	NA
	12/6/2002	<0.5	<0.5	<0.5	<0.5	27,600 ^(a)	480 ^(b)	NA
	3/15/2004	<0.5	<0.5	0.57	1.10	170,000 ^(a)	890 ^(b)	NA
	6/30/2005	<.05	<.05	3.1	<.05	290,000	3000	150,000
	9/11/2006	<5	<5	<5	<5	310,000	6600 ^(a)	150,000
	10/17/2007	<1	<1	<1	2.70	330,000	1900	190,000
	10/21/2008	<1	<1	<1	<1	82,000	1100	43,000
10/16/2009	<5	<5	<5	<5	60,000	2200	35,000	
10/29/2010	floating product (0.03 ft)							
3/1/2012	floating product (0.01 ft)							
3/22/2013	floating product (0.02 ft)							

NOTES:

- TPH-g - Total Petroleum Hydrocarbons as Gasoline in ug/l B - Benzene in ug/l X - Xylenes in ug/l
 TPH-d - Total Petroleum Hydrocarbons as Diesel in ug/l T - Toluene in ug/l E - Ethylbenzene in ug/l
 TOG - Total Oil and Grease in ug/l TPHmo - Total Petroleum Hydrocarbons as Motor Oil ug/l (after 2004)
 BDL - Below detection limit NA - Not analyzed
 (a) - Quantified as diesel but chromatogram did not match diesel pattern
 (b) - Quantified as gasoline but chromatogram did not match gasoline pattern

**Table 3 Summary of Groundwater Analytical Results
Owens-Brockway Glass Container Facility, Oakland, CA**

	Date	B	T	E	X	TPHd	TPHg	TOG/TPHmo
MW-8	10/23/1986	<0.2	<0.2	NA	<1	NA	1300	14,000
	4/9/1987	<0.5	<0.2	NA	<1	NA	73	NA
	9/16/1987	floating product						
	12/1/1987	NA	NA	NA	NA	630	NA	NA
	3/9/1988	NA	NA	NA	NA	2,600	NA	NA
	6/9/1988	NA	NA	NA	NA	1,700	NA	NA
	9/14/1988	NA	NA	NA	NA	150	NA	NA
	8/12/1997	floating product						
	9/16/1997	<0.5	<0.5	<0.5	<0.5	290 ^(a)	<50	NA
	11/2/1998	<0.5	<0.5	<0.5	<0.5	1,300 ^(a)	<50	NA
	12/6/2000	<0.5	<0.5	<0.5	<0.5	160 ^(a)	<50	NA
	12/12/2001	<0.5	<0.5	<0.5	<0.5	<50	<50	NA
	12/5/2002	<0.5	<0.5	<0.5	<0.5	170 ^(a)	55 ^(b)	NA
	3/15/2004	<0.5	<0.5	<0.5	<0.5	3,000 ^(a)	320 ^(b)	NA
	6/30/2005	<0.5	<0.5	<0.5	<0.5	4,600	1100	1,400
	9/11/2006	<0.5	<0.5	<0.5	2.1	1800	1200	760
	10/17/2007	<0.5	<0.5	<0.5	<0.5	1,300	390	2,100
	10/21/2008	<0.5	<0.5	<0.5	<0.5	380	74	470
	10/16/2009	<0.5	<0.5	<0.5	<0.5	340	280	<250
	10/29/2010	<0.5	<0.5	<0.5	<0.5	84	150	<250
3/1/2012	<0.5	<0.5	<0.5	<0.5	410	560	600	
3/22/2013	<0.5	<0.5	<0.5	<0.5	570	420	310	
MW-9	4/9/1987	floating product						
	9/16/1987	NA	NA	NA	NA	1,300	NA	NA
	12/1/1987	NA	NA	NA	NA	18,000	NA	NA
	3/9/1988	NA	NA	NA	NA	47,000	NA	NA
	6/8/1988	floating product						
	9/14/1988	floating product						
	9/16/1997	<13	<13	<13	18.00	28,000 ^(a)	6000	NA
	11/2/1998	floating product						
	12/6/2000	<5	<.5	<.5	<.5	102,000 ^(a)	790	NA
	12/12/2001	innaccessible						
	12/5/2002	innaccessible						
	3/15/2004	innaccessible						
	6/30/2005	innaccessible						
	9/11/2006	innaccessible						
	10/17/2007	innaccessible						
	10/21/2008	innaccessible						
	10/16/2009	innaccessible						
10/29/2010	innaccessible							
3/1/2012	innaccessible							
3/22/2013	innaccessible							

NOTES:

- TPH-g - Total Petroleum Hydrocarbons as Gasoline in ug/l B - Benzene in ug/l X - Xylenes in ug/l
 TPH-d - Total Petroleum Hydrocarbons as Diesel in ug/l T - Toluene in ug/l E - Ethylbenzene in ug/l
 TOG - Total Oil and Grease in ug/l TPHmo - Total Petroleum Hydrocarbons as Motor Oil ug/l (after 2004)
 BDL - Below detection limit NA - Not analyzed
 (a) - Quantified as diesel but chromatogram did not match diesel pattern
 (b) - Quantified as gasoline but chromatogram did not match gasoline pattern

**Table 3 Summary of Groundwater Analytical Results
Owens-Brockway Glass Container Facility, Oakland, CA**

	Date	B	T	E	X	TPHd	TPHg	TOG/TPHmo
MW-10	10/23/1986	<0.2	<0.2	NA	<0.2	NA	380	7,200
	4/9/1987	<0.2	<0.2	NA	<0.2	NA	300	NA
	9/16/1987	NA	NA	NA	NA	3,800	NA	NA
	12/1/1987	NA	NA	NA	NA	590	NA	NA
	3/8/1988	NA	NA	NA	NA	<50	NA	NA
	6/8/1988	NA	NA	NA	NA	3,800	NA	NA
	9/14/1988	NA	NA	NA	NA	570	NA	NA
	9/16/1997	<0.5	<0.5	<0.5	<0.5	1,300 ^(a)	<50	NA
	11/2/1998	<0.5	<0.5	<0.5	<0.5	1400 ^(a)	<50	NA
	12/6/2000	<0.5	<0.5	<0.5	0.70	730 ^(a)	150	NA
	12/11/2001	<0.5	<0.5	<0.5	<0.5	630 ^(a)	210 ^(b)	NA
	12/5/2002	<0.5	<0.5	<0.5	<0.5	840 ^(a)	210 ^(b)	NA
	3/15/2004	<0.5	<0.5	<0.5	0.8	2,500 ^(a)	160 ^(b)	NA
	6/30/2005	<0.5	<0.5	<0.5	<0.5	2900	140	2300
	9/11/2006	<0.5	<0.5	<0.5	0.81	3400	270	2600
	10/17/2007	<0.5	<0.5	<0.5	<0.5	1700	140	1500
	10/21/2008	<0.5	<0.5	<0.5	<0.5	2300	240	1500
	10/16/2009	<0.5	<0.5	<0.5	<0.5	4700	110	4600
10/29/2010	<0.5	<0.5	<0.5	<0.5	640	190	530	
3/1/2012	<0.5	<0.5	<0.5	<0.5	2000	140	2400	
3/22/2013	<0.5	<0.5	<0.5	<0.5	3100	150	3200	
MW-11	9/23/1986	<0.4	<0.4	NA	1.4	NA	<8	1,200
	4/9/1987	BDL	BDL	NA	BDL	NA	BDL	NA
	9/16/1987	BDL	BDL	NA	BDL	NA	BDL	NA
	12/1/1987	0.8	BDL	NA	10	NA	BDL	NA
	3/7/1988	BDL	BDL	NA	BDL	BDL	BDL	NA
	6/8/1988	BDL	BDL	NA	BDL	BDL	BDL	NA
	9/14/1988	BDL	BDL	NA	BDL	100,000	BDL	NA
	Destroyed							
MW-12	9/23/1986	0.49	1	NA	1.3	NA	100	2,500
	4/9/1987	BDL	BDL	NA	BDL	NA	BDL	NA
	9/16/1987	BDL	BDL	NA	BDL	NA	BDL	NA
	12/1/1987	BDL	BDL	NA	13	NA	BDL	NA
	3/7/1988	BDL	BDL	NA	BDL	BDL	BDL	NA
	6/8/1988	BDL	BDL	NA	BDL	BDL	BDL	NA
	9/14/1988	BDL	BDL	NA	BDL	120	BDL	NA
	6/30/2005	Destroyed						

NOTES:

TPH-g - Total Petroleum Hydrocarbons as Gasoline in ug/l

B - Benzene in ug/l

X - Xylenes in ug/l

TPH-d - Total Petroleum Hydrocarbons as Diesel in ug/l

T - Toluene in ug/l

E - Ethylbenzene in ug/l

TOG - Total Oil and Grease in ug/l

TPHmo - Total Petroleum Hydrocarbons as Motor Oil ug/l (after 2004)

BDL - Below detection limit

NA - Not analyzed

(a) - Quantified as diesel but chromatogram did not match diesel pattern

(b) - Quantified as gasoline but chromatogram did not match gasoline pattern

**Table 3 Summary of Groundwater Analytical Results
Owens-Brockway Glass Container Facility, Oakland, CA**

	Date	B	T	E	X	TPHd	TPHg	TOG/TPHmo
MW-13	12/24/1986	<0.2	<0.9	NA	<0.9	NA	<10	57,000
	4/9/1987	<5	<5	NA	<5	NA	<10	NA
	9/16/1987	<5	<5	NA	<5	NA	<10	NA
	12/1/1987	1.6	<5	NA	12	NA	<10	NA
	3/8/1988	<5	<5	NA	<5	<50	7.7	NA
	6/8/1988	<5	<5	NA	<5	<50	<10	NA
	9/14/1988	<5	<5	NA	<5	130	<10	NA
	9/16/1997	<5	<5	<5	<5	120 ^(a)	<50	NA
	11/2/1998	<5	<5	<5	<5	120 ^(a)	<50	NA
	12/6/2000	<0.5	<0.5	<0.5	<0.5	200 ^(a)	<50	NA
	12/11/2001	<0.5	<0.5	<0.5	<0.5	91 ^(a)	<50	NA
	12/5/2002	<0.5	<0.5	<0.5	<0.5	190 ^(a)	<50	NA
	3/15/2004	<0.5	<0.5	<0.5	<0.5	<50	<50	NA
	6/30/2005	<1.0	<1.0	<1.0	<1.0	56	<50	<250
	9/11/2006	<0.5	<0.5	<0.5	<0.5	<50	<50	<250
	10/17/2007	<0.5	<0.5	<0.5	<0.5	<50	<50	<250
	10/21/2008	<0.5	<0.5	<0.5	<0.5	<50	<50	<250
	10/16/2009	<0.5	<0.5	<0.5	<0.5	<50	<50	<250
	10/29/2010	<0.5	<0.5	<0.5	<0.5	<50	<50	<250
3/1/2012	<0.5	<0.5	<0.5	<0.5	<50	<50	<250	
3/22/2013	<0.5	<0.5	<0.5	<0.5	88	<50	<250	
MW-14	9/23/1986	<0.4	<0.2	NA	<0.2	NA	<8	3,200
	4/9/1987	BDL	BDL	NA	BDL	NA	BDL	NA
	9/16/1987	BDL	BDL	NA	BDL	56	1.7	NA
	12/1/1987	1.2	4	NA	10	66	BDL	NA
	3/7/1988	BDL	BDL	NA	BDL	BDL	20	NA
	6/8/1988	inaccessible						
	9/14/1988	inaccessible						
		Destroyed						

NOTES:

- TPH-g - Total Petroleum Hydrocarbons as Gasoline in ug/l B - Benzene in ug/l X - Xylenes in ug/l
 TPH-d - Total Petroleum Hydrocarbons as Diesel in ug/l T - Toluene in ug/l E - Ethylbenzene in ug/l
 TOG - Total Oil and Grease in ug/l TPHmo - Total Petroleum Hydrocarbons as Motor Oil ug/l (after 2004)
 BDL - Below detection limit NA - Not analyzed
- (a) - Quantified as diesel but chromatogram did not match diesel pattern
 (b) - Quantified as gasoline but chromatogram did not match gasoline pattern

**Table 3 Summary of Groundwater Analytical Results
Owens-Brockway Glass Container Facility, Oakland, CA**

	Date	B	T	E	X	TPHd	TPHg	TOG/TPHmo
MW-15	12/24/1986	<0.2	<0.9	NA	9.20	NA	120	1,600
	4/9/1987	<5	<5	NA	<5	NA	<0.5	NA
	9/16/1987	<5	<5	NA	<5	<100	8.4	NA
	12/1/1987	3.30	0.84	NA	14	NA	<0.5	NA
	3/8/1988	0.80	<5	NA	<5	<100	90	NA
	6/9/1988	<5	<5	NA	<5	<100	53	NA
	9/14/1988	NA	NA	NA	NA	100	NA	NA
	9/16/1997	<0.5	<0.5	<0.5	<0.5	127 ^(a)	<50	NA
	11/2/1998	<0.5	<0.5	<0.5	<0.5	340 ^(a)	<50	NA
	12/6/2000	<0.5	<0.5	<0.5	<0.5	400 ^(a)	<50	NA
	12/11/2001	<0.5	<0.5	<0.5	<0.5	290 ^(a)	<50	NA
	12/5/2002	<0.5	<0.5	<0.5	<0.5	440 ^(a)	<50	NA
	3/15/2004	<0.5	<0.5	<0.5	<0.5	<50	<50	NA
	6/30/2005	<0.5	<0.5	<0.5	<0.5	240	<50	360
	9/11/2006	<0.5	<0.5	<0.5	<0.5	56	<50	<250
	10/17/2007	<0.5	<0.5	<0.5	<0.5	<50	<50	<250
	10/21/2008	<0.5	<0.5	<0.5	<0.5	<50	<50	<250
	10/16/2009	<0.5	<0.5	<0.5	<0.5	55	<50	<250
10/29/2010	<0.5	<0.5	<0.5	<0.5	<50	<50	<250	
3/1/2012	<0.5	<0.5	<0.5	<0.5	100	<50	<250	
3/22/2013	floating product (0.01 ft)							
MW-16	12/24/1986	<0.2	<0.9	NA	<.9	NA	<10	1,200
	4/9/1987	<5	<5	NA	<5	NA	<.5	NA
	9/16/1987	<5	<5	NA	<5	64	<.5	NA
	12/1/1987	1.00	0.37	NA	9.1	150	120	NA
	3/7/1988	0.50	<5	NA	<5	<100	10	NA
	6/8/1988	<5	<5	NA	<5	<100	<0.5	NA
	9/14/1988	<5	<5	NA	<5	190	<0.5	NA
	9/16/1997	floating product						
	12/6/2000	<0.5	<0.5	<0.5	<0.5	97 ^(a)	<50	NA
	12/11/2001	<0.5	<0.5	<0.5	<0.5	<50	<50	NA
	12/5/2002	<0.5	<0.5	<0.5	<0.5	51 ^(a)	<50	NA
	3/15/2004	<0.5	<0.5	<0.5	<0.5	63	<50	NA
	6/30/2005	<0.5	<0.5	<0.5	<0.5	66	<50	<250
	9/11/2006	<0.5	<0.5	<0.5	<0.5	140	<50	550
	10/17/2007	<0.5	<0.5	<0.5	<0.5	92	<50	290
	10/21/2008	<0.5	<0.5	<0.5	<0.5	76	<50	<250
	10/16/2009	<0.5	<0.5	<0.5	<0.5	780	<50	910
	10/29/2010	<0.5	<0.5	<0.5	<0.5	390	<50	1500
3/1/2012	<0.5	<0.5	<0.5	<0.5	270	<50	1600	
3/22/2013	<0.5	<0.5	<0.5	<0.5	220	<50	1700	

NOTES:

- TPH-g - Total Petroleum Hydrocarbons as Gasoline in ug/l B - Benzene in ug/l X - Xylenes in ug/l
 TPH-d - Total Petroleum Hydrocarbons as Diesel in ug/l T - Toluene in ug/l E - Ethylbenzene in ug/l
 TOG - Total Oil and Grease in ug/l TPHmo - Total Petroleum Hydrocarbons as Motor Oil ug/l (after 2004)
 BDL - Below detection limit NA - Not analyzed
 (a) - Quantified as diesel but chromatogram did not match diesel pattern
 (b) - Quantified as gasoline but chromatogram did not match gasoline pattern

**Table 3 Summary of Groundwater Analytical Results
Owens-Brockway Glass Container Facility, Oakland, CA**

	Date	B	T	E	X	TPHd	TPHg	TOG/TPHmo
MW-17	12/24/1986	5	1.20	NA	14.00	NA	240	2,400
	4/9/1987	<5	<5	NA	<5	NA	<0.5	NA
	9/16/1987	<5	<5	NA	0.55	680	44	NA
	12/1/1987	7.80	2.40	NA	28	1,300	540	NA
	3/8/1988	83.00	<5	NA	46	3,800	4300	NA
	6/8/1988	innaccessible						
	9/14/1988	<0.5	<0.5	<0.5	<0.5	64,000	54000	NA
	9/16/1997	<0.5	<0.5	<0.5	<0.5	119,600 ^(a)	1900	NA
	11/2/1998	<0.5	<0.5	<0.5	0.60	16,000 ^(a)	<50	NA
	12/6/2000	<0.5	<0.5	<0.5	<0.5	47,800 ^(a)	340	NA
	12/11/2001	<10	<10	<10	<10	101,000 ^(a)	5300 ^(b)	NA
	12/5/2002	<0.5	<0.5	<0.5	<0.5	71,000 ^(a)	700 ^(b)	NA
	3/15/2004	2.1	0.71	<0.5	1.5	660,000 ^(a)	1400 ^(b)	NA
	6/30/2005	<0.5	2.4	<0.5	1.1	1,600,000	1700	NA
	9/11/2006	<2.5	36	9.50	79	2,300,000	26,000	810,000
	re-test 10/19/2006	5.90	<1.0	<1.0	3.7	1,100,000	1,600	480,000
	10/17/2007	<2.5	<2.5	<2.5	<2.5	710,000	4,400	270,000
	10/21/2008	<2.5	<2.5	<2.5	<2.5	330,000	3,300	130,000
	10/16/2009	<1.0	2.9	<1.0	<1.0	900,000	2,400	350,000
10/29/2010	<5.0	5.0	0.92	12	610,000	5,000	360,000	
3/1/2012	<5.0	<5.0	<5.0	<5.0	390,000	3,000	160,000	
3/22/2013	8.2	1.4	<5.0	4.1	570,000	4,500	220,000	
MW-18	9/23/1986	<0.3	<0.3	NA	0.99	NA	<20	1,600
	4/9/1987	BDL	BDL	NA	BDL	NA	BDL	NA
	9/16/1987	BDL	BDL	NA	BDL	480	BDL	NA
	12/1/1987	BDL	BDL	NA	6.6	180	BDL	NA
	3/7/1988	BDL	BDL	NA	BDL	BDL	BDL	NA
	6/8/1988	BDL	BDL	NA	BDL	BDL	BDL	NA
	9/14/1988	BDL	BDL	NA	BDL	190	BDL	NA
		Destroyed						

NOTES:

- TPH-g - Total Petroleum Hydrocarbons as Gasoline in ug/l B - Benzene in ug/l X - Xylenes in ug/l
 TPH-d - Total Petroleum Hydrocarbons as Diesel in ug/l T - Toluene in ug/l E - Ethylbenzene in ug/l
 TOG - Total Oil and Grease in ug/l TPHmo - Total Petroleum Hydrocarbons as Motor Oil ug/l (after 2004)
 BDL - Below detection limit NA - Not analyzed
 (a) - Quantified as diesel but chromatogram did not match diesel pattern
 (b) - Quantified as gasoline but chromatogram did not match gasoline pattern

PLATES

**Table 3 Summary of Groundwater Analytical Results
Owens-Brockway Glass Container Facility, Oakland, CA**

	Date	B	T	E	X	TPHd	TPHg	TOG/TPHmo
MW-19	6/23/2004	<0.5	<0.5	<0.5	<0.5	1,100	480	NA
	3/15/2004	<0.5	<0.5	<0.5	<0.5	1,100 ^(a)	330 ^(b)	NA
	6/30/2005	<0.5	<0.5	1.5	4.5	1700	840	350
	9/18/2006	<0.5	<0.5	<0.5	0.83	890	280	280
	10/17/2007	<0.5	<0.5	<0.5	0.61	1200	880	<250
	10/21/2008	<0.5	<0.5	<0.5	<0.5	300	340	<250
	10/16/2009	<0.5	<0.5	<0.5	<0.5	440	390	<250
	10/29/2010	<0.5	<0.5	<0.5	0.95	460	670	<250
	3/1/2012	<0.5	<0.5	<0.5	<0.5	440	310	<250
	3/22/2013	<0.5	<0.5	<0.5	1.1	780	620	<250
MW-20	12/11/2000	<0.5	<0.5	<0.5	<0.5	110 ^(a)	<50	NA
	4/6/2001	<0.5	<0.5	<0.5	<0.5	57 ^(a)	<50	NA
	7/6/2001	<0.5	<0.5	<0.5	<0.5	120 ^(a)	<50	NA
	9/19/2001	<0.5	<0.5	<0.5	<0.5	160 ^(a)	<50	NA
	12/11/2001	<0.5	<0.5	<0.5	<0.5	82 ^(a)	86 ^(b)	NA
	2/6/2002	<0.5	<0.5	<0.5	<0.5	85 ^(a)	<50	NA
	3/15/2004	<0.5	<0.5	<0.5	<0.5	<0.5	<50	NA
	6/30/2005	<0.5	<0.5	<0.5	<0.5	<500	<50	NA
	9/11/2006	<0.5	<0.5	<0.5	<0.5	<50	<50	<250
	10/17/2007	<0.5	<0.5	<0.5	<0.5	<50	<50	<250
	10/21/2008	<0.5	<0.5	<0.5	<0.5	<50	<50	<250
	10/16/2009	<0.5	<0.5	<0.5	<0.5	<50	<50	<250
	10/29/2010	<0.5	<0.5	<0.5	<0.5	<50	<50	<250
	3/1/2012	<0.5	<0.5	<0.5	<0.5	<50	<50	<250
	3/22/2013	<0.5	<0.5	<0.5	<0.5	<50	<50	<250

NOTES:

TPH-g - Total Petroleum Hydrocarbons as Gasoline in ug/l

B - Benzene in ug/l

X - Xylenes i

TPH-d - Total Petroleum Hydrocarbons as Diesel in ug/l

T - Toluene in ug/l

E - Ethylbenzene in ug/l

TOG - Total Oil and Grease in ug/l

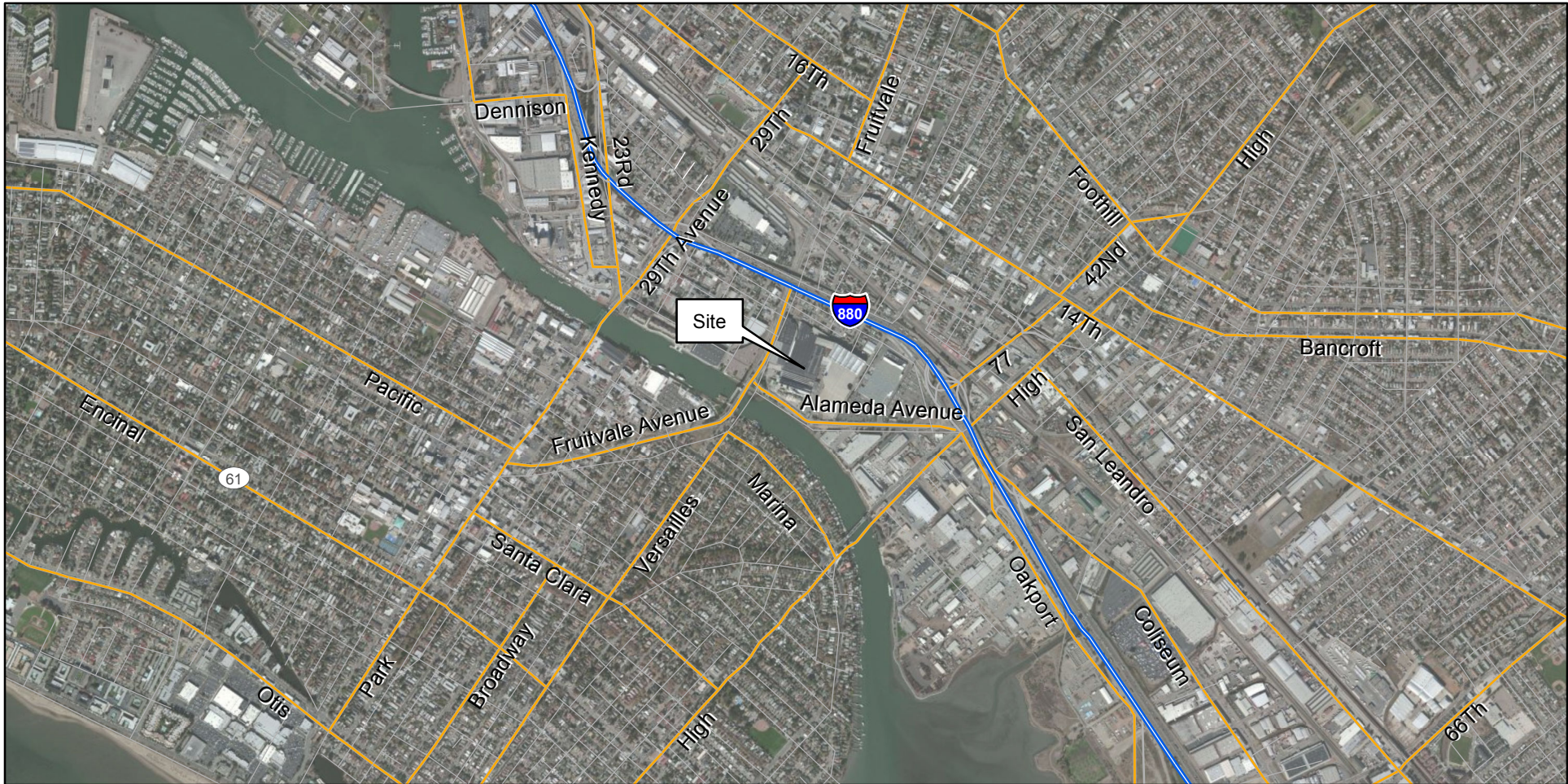
TPHmo - Total Petroleum Hydrocarbons as Motor Oil ug/l (after 2004)

BDL - Below detection limit

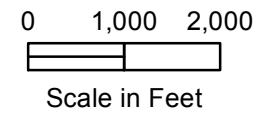
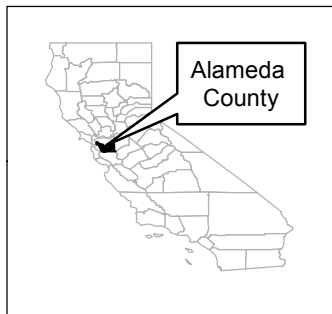
NA - Not analyzed

(a) - Quantified as diesel but chromatogram did not match diesel pattern

(b) - Quantified as gasoline but chromatogram did not match gasoline pattern



Drawn by A. Lewellyn. March 2012. Base layers are unmodified Alameda County Digital Data Sets.

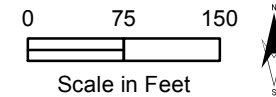




Drawn by A. Llewellyn, April 2013. Base layers are unmodified Pictometry Digital Data Sets.

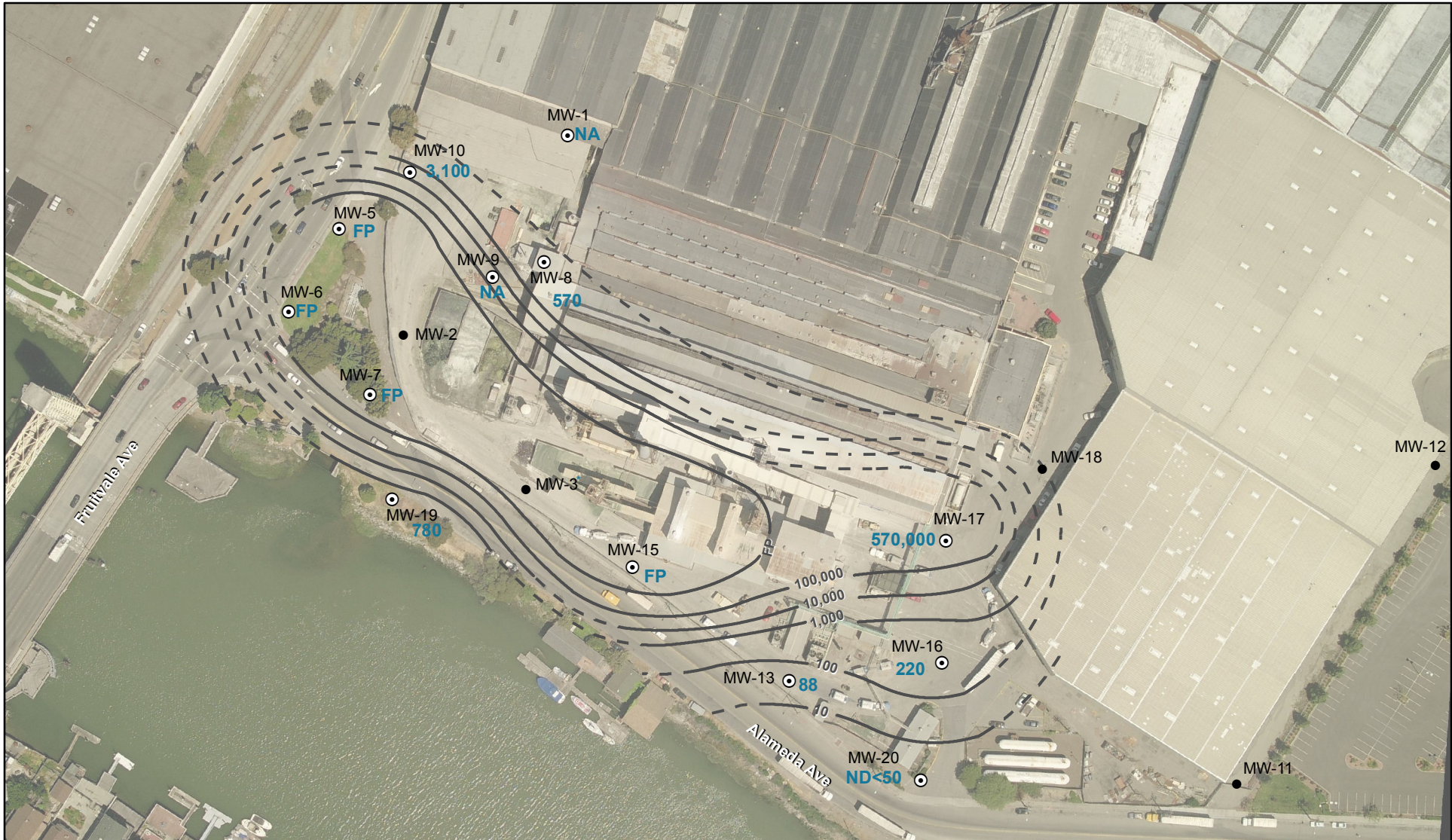
EXPLANATION

- ⊙ Monitoring Well
- Destroyed Well
- Line of Equal Groundwater Elevation
- - - Approximate Line of Equal Groundwater Elevation
- 4.59 Groundwater Elevation
- NA Not Available
- NM Not Measured



Groundwater Elevation Contour Map **PLATE**
 March 22, 2013
 Owens-Brockway Glass Container Facility
 3600 Alameda Avenue, Oakland California **2**

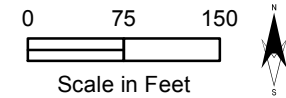




Drawn by A. Llewellyn, April 2013. Base layers are unmodified Pictometry Digital Data Sets.

EXPLANATION

- ⊙ Monitoring Well
- Destroyed Well
- Line of Equal Fuel Oil Concentration
- - - Approximate Line of Equal Fuel Oil Concentration
- 220 TPHd Concentration in µg/L
- FP Floating Product
- NA Not Available
- * MW-3 was last reported to have floating product before being destroyed in 1988



APPENDIX A

WELL GAUGING DATA

Project # 130322-61 Date 3-22-13 Client CKG

Site 3600 Alameda Ave Oakland CA

Well ID	Time	Well Size (in.)	Sheen / Odor	Depth to Immiscible Liquid (ft.)	Thickness of Immiscible Liquid (ft.)	Volume of Immiscibles Removed (ml)	Depth to water (ft.)	Depth to well bottom (ft.)	Survey Point: TOB or TOC	Notes
MW-1	←	covered		By glass		access				
MW-5	0912	2		11.95	0.03	—	11.98	—		SPT Sack
MW-6	0918	2		14.40	0.02	—	14.42	—		SPT Sack
MW-7	0924	2		12.38	0.02	—	12.40	—		SPT Sack
MW-8	0918	2					9.40	22.09		
MW-10	0924	2					9.93	19.00		
MW-13	0924	2					9.39	19.02		SPT Sack
MW-15	0920	2		11.90	0.01	—	11.91	—		SPT Sack
MW-16	0927	2					9.52	19.91		SPT Sack
MW-17	0930	2					9.21	15.47		SPT Sack
MW-19	0930	2					11.56	20.04		
MW-20	0936	2					8.25	21.75		SPT Sack

WELLHEAD INSPECTION CHECKLIST

Client CKG Environmental Date 3-22-13
 Site Address 3600 Alameda Ave Oakland CA
 Job Number 130322-J01 Technician JO

Well ID	Well Inspected - No Corrective Action Required	Water Bailed From Wellbox	Wellbox Components Cleaned	Cap Replaced	Lock Replaced	Other Action Taken (explain below)	Well Not Inspected (explain below)	Repair Order Submitted
MW-1		covered						
MW-5						X		
MW-6	X							
MW-7	X							
MW-8	X							
MW-10						X		
MW-13						X		
MW-15						X		
MW-16						X		
MW-17	X							
MW-19	X							
MW-20						X		

NOTES: MW-5 Apron cracked. MW-16 212 tabs Broken no bolts
MW-20 212 tabs Broken no bolts, MW-10 Broken lid,
MW-13 Broken lid : MW-15 212 bolts missing

WELL MONITORING DATA SHEET

Project #: <u>B0327 Job</u>	Client: <u>CKG</u>
Sampler: <u>Jo</u>	Date: <u>3-22-13</u>
Well I.D.: <u>MW-1</u>	Well Diameter: 2 3 4 6 8 <u> </u>
Total Well Depth (TD):	Depth to Water (DTW):
Depth to Free Product:	Thickness of Free Product (feet):
Referenced to: <u>PVC</u> <u>Grade</u>	D.O. Meter (if req'd): <u>YSI</u> <u>HACH</u>
DTW with 80% Recharge [(Height of Water Column x 0.20) + DTW]:	

Purge Method: <u>Bailer</u> Disposable Bailer Positive Air Displacement Electric Submersible	Waterra Peristaltic Extraction Pump Other <u> </u>	Sampling Method: <u>Bailer</u> Disposable Bailer Extraction Port Dedicated Tubing Other: <u> </u>
---	--	--

_____ (Gals.) X _____ = _____ Gals. I Case Volume Specified Volumes Calculated Volume	<table border="1" style="width: 100%; border-collapse: collapse;"> <thead> <tr> <th>Well Diameter</th> <th>Multiplier</th> <th>Well Diameter</th> <th>Multiplier</th> </tr> </thead> <tbody> <tr> <td>1"</td> <td>0.04</td> <td>4"</td> <td>0.65</td> </tr> <tr> <td>2"</td> <td>0.16</td> <td>6"</td> <td>1.47</td> </tr> <tr> <td>3"</td> <td>0.37</td> <td>Other</td> <td>radius² * 0.163</td> </tr> </tbody> </table>	Well Diameter	Multiplier	Well Diameter	Multiplier	1"	0.04	4"	0.65	2"	0.16	6"	1.47	3"	0.37	Other	radius ² * 0.163
Well Diameter	Multiplier	Well Diameter	Multiplier														
1"	0.04	4"	0.65														
2"	0.16	6"	1.47														
3"	0.37	Other	radius ² * 0.163														

Time	Temp (°F or °C)	pH	Cond. (mS or µS)	Turbidity (NTUs)	Gals. Removed	Observations
	<u>covered</u>	<u>By</u>	<u>glass</u>	<u>unable to</u>	<u>access</u>	<u>NO</u>
	<u>sample</u>	<u>tested</u>				

Did well dewater? Yes No Gallons actually evacuated: _____

Sampling Date: _____ Sampling Time: _____ Depth to Water: _____

Sample I.D.: _____ Laboratory: Kiff CalScience Other _____

Analyzed for: TPH-G BTEX MTBE TPH-D Oxygenates (5) Other: _____

EB I.D. (if applicable): _____ @ _____ Time Duplicate I.D. (if applicable): _____

Analyzed for: TPH-G BTEX MTBE TPH-D Oxygenates (5) Other: _____

D.O. (if req'd):	Pre-purge:	mg/L	Post-purge:	mg/L
O.R.P. (if req'd):	Pre-purge:	mV	Post-purge:	mV

WELL MONITORING DATA SHEET

Project #: 130322-J01	Client: CKG
Sampler: J0	Date: 3-22-13
Well I.D.: MW-6	Well Diameter: (2) 3 4 6 8 _____
Total Well Depth (TD): 14.40 ⁰	Depth to Water (DTW): 14.42
Depth to Free Product: 14.40	Thickness of Free Product (feet): 0.02
Referenced to: PVC Grade	D.O. Meter (if req'd): YSI HACH
DTW with 80% Recharge [(Height of Water Column x 0.20) + DTW]:	

Purge Method: Bailer Disposable Bailer Positive Air Displacement Electric Submersible	Water Peristaltic Extraction Pump Other _____	Sampling Method: Bailer Disposable Bailer Extraction Port Dedicated Tubing Other: _____
---	---	--

_____ (Gals.) X _____ = _____ Gals. Case Volume Specified Volumes Calculated Volume	<table border="1" style="width: 100%; border-collapse: collapse;"> <thead> <tr> <th>Well Diameter</th> <th>Multiplier</th> <th>Well Diameter</th> <th>Multiplier</th> </tr> </thead> <tbody> <tr> <td>1"</td> <td>0.04</td> <td>4"</td> <td>0.65</td> </tr> <tr> <td>2"</td> <td>0.16</td> <td>6"</td> <td>1.47</td> </tr> <tr> <td>3"</td> <td>0.37</td> <td>Other</td> <td>radius² * 0.163</td> </tr> </tbody> </table>	Well Diameter	Multiplier	Well Diameter	Multiplier	1"	0.04	4"	0.65	2"	0.16	6"	1.47	3"	0.37	Other	radius ² * 0.163
Well Diameter	Multiplier	Well Diameter	Multiplier														
1"	0.04	4"	0.65														
2"	0.16	6"	1.47														
3"	0.37	Other	radius ² * 0.163														

Time	Temp (°F or °C)	pH	Cond. (mS or µS)	Turbidity (NTUs)	Gals. Removed	Observations
SPH						Detected w/ Interface Probe, sock saturated w/ SPH
sock						replaced NO sample taken

Did well dewater? Yes No	Gallons actually evacuated: _____	
Sampling Date: _____	Sampling Time: _____	Depth to Water: _____
Sample I.D.: _____	Laboratory: Kiff CalScience Other _____	
Analyzed for: TPH-G BTEX MTBE TPH-D Oxygenates (5) Other: _____		
EB I.D. (if applicable): _____ @ _____ Time	Duplicate I.D. (if applicable): _____	
Analyzed for: TPH-G BTEX MTBE TPH-D Oxygenates (5) Other: _____		
D.O. (if req'd): Pre-purge: _____ mg/L	Post-purge: _____ mg/L	
O.R.P. (if req'd): Pre-purge: _____ mV	Post-purge: _____ mV	

WELL MONITORING DATA SHEET

Project #: 130322-501	Client: CKG
Sampler: JO	Date: 3-22-13
Well I.D.: MW-7	Well Diameter: (2) 3 4 6 8 _____
Total Well Depth (TD): +	Depth to Water (DTW): 12.40
Depth to Free Product: 12.38	Thickness of Free Product (feet): 0.02
Referenced to: (PVC) Grade	D.O. Meter (if req'd): YSI HACH
DTW with 80% Recharge [(Height of Water Column x 0.20) + DTW]:	

Purge Method: Bailer Disposable Bailer Positive Air Displacement Electric Submersible	Water Peristaltic Extraction Pump Other _____	Sampling Method: Bailer Disposable Bailer Extraction Port Dedicated Tubing Other: _____
---	---	--

_____ (Gals.) X _____ = _____ Gals. I Case Volume Specified Volumes Calculated Volume	<table border="1" style="width: 100%; border-collapse: collapse;"> <thead> <tr> <th>Well Diameter</th> <th>Multiplier</th> <th>Well Diameter</th> <th>Multiplier</th> </tr> </thead> <tbody> <tr> <td>1"</td> <td>0.04</td> <td>4"</td> <td>0.65</td> </tr> <tr> <td>2"</td> <td>0.16</td> <td>6"</td> <td>1.47</td> </tr> <tr> <td>3"</td> <td>0.37</td> <td>Other</td> <td>radius² * 0.163</td> </tr> </tbody> </table>	Well Diameter	Multiplier	Well Diameter	Multiplier	1"	0.04	4"	0.65	2"	0.16	6"	1.47	3"	0.37	Other	radius ² * 0.163
Well Diameter	Multiplier	Well Diameter	Multiplier														
1"	0.04	4"	0.65														
2"	0.16	6"	1.47														
3"	0.37	Other	radius ² * 0.163														

Time	Temp (°F or °C)	pH	Cond. (mS or µS)	Turbidity (NTUs)	Gals. Removed	Observations
						SPH detected w/ interface probe, sock saturated w/ SPH
						sock replaced no sample taken

Did well dewater? Yes No	Gallons actually evacuated: _____	
Sampling Date: _____	Sampling Time: _____	Depth to Water: _____
Sample I.D.: _____	Laboratory: Kiff CalScience Other _____	
Analyzed for: TPH-G BTEX MTBE TPH-D Oxygenates (5) Other: _____		
EB I.D. (if applicable): _____ @ _____ Time	Duplicate I.D. (if applicable): _____	
Analyzed for: TPH-G BTEX MTBE TPH-D Oxygenates (5) Other: _____		
D.O. (if req'd): Pre-purge: _____ mg/L	Post-purge: _____ mg/L	
O.R.P. (if req'd): Pre-purge: _____ mV	Post-purge: _____ mV	

WELL MONITORING DATA SHEET

Project #: 130322-101	Client: CLK
Sampler: SO	Date: 3-22-13
Well I.D.: MW-9	Well Diameter: (2) 3 4 6 8
Total Well Depth (TD): 22.09	Depth to Water (DTW): 9.40
Depth to Free Product: —	Thickness of Free Product (feet): —
Referenced to: (PVC) Grade	D.O. Meter (if req'd): YSI HACH
DTW with 80% Recharge [(Height of Water Column x 0.20) + DTW]: 11.93	

Purge Method: Bailer Waterra Sampling Method: Bailer
 Disposable Bailer Peristaltic Disposable Bailer
 Positive Air Displacement Extraction Pump Extraction Port
 Electric Submersible Other _____ Dedicated Tubing

Other: _____

_____ (Gals.) X 3 = _____ Gals.
 Case Volume Specified Volumes Calculated Volume

Well Diameter	Multiplier	Well Diameter	Multiplier
1"	0.04	4"	0.65
2"	0.16	6"	1.47
3"	0.37	Other	radius ² * 0.163

Time	Temp (°F or °C)	pH	Cond. (mS or µS)	Turbidity (NTUs)	Gals. Removed	Observations
11:14	17.3	7.61	1412	>1000	2.0	
11:18	17.3	7.60	1393	>1000	4.0	
11:22	17.3	7.59	1387	>1000	6.0	

Did well dewater? Yes No Gallons actually evacuated: 6.0

Sampling Date: 3-22-13 Sampling Time: 11:25 Depth to Water: 10.04

Sample I.D.: MW-9 Laboratory: Kiff CalScience Other: McCampbell

Analyzed for: TPH-G BTEX MTBE TPH-D Oxygenates (5) Other: SO2 CUE

EB I.D. (if applicable): @ Time Duplicate I.D. (if applicable):

Analyzed for: TPH-G BTEX MTBE TPH-D Oxygenates (5) Other:

D.O. (if req'd):	Pre-purge:	mg/L	Post-purge:	mg/L
O.R.P. (if req'd):	Pre-purge:	mV	Post-purge:	mV

WELL MONITORING DATA SHEET

Project #: <u>130322-101</u>	Client: <u>CKG</u>
Sampler: <u>JD</u>	Date: <u>3-22-13</u>
Well I.D.: <u>MW-10</u>	Well Diameter: <u>(2)</u> 3 4 6 8 _____
Total Well Depth (TD): <u>19.00</u>	Depth to Water (DTW): <u>9.93</u>
Depth to Free Product: <u>—</u>	Thickness of Free Product (feet): <u>—</u>
Referenced to: <u>(PVC)</u> Grade	D.O. Meter (if req'd): YSI HACH
DTW with 80% Recharge [(Height of Water Column x 0.20) + DTW]: <u>11.74</u>	

Purge Method: <u>Bailer</u>	Watterra	Sampling Method: <u>Bailer</u>
<u>Disposable Bailer</u>	Peristaltic	<u>Disposable Bailer</u>
Positive Air Displacement	Extraction Pump	Extraction Port
Electric Submersible	Other _____	Dedicated Tubing
		Other: _____

1.5 (Gals.) X 3 = 4.5 Gals.
 I Case Volume Specified Volumes Calculated Volume

Well Diameter	Multiplier	Well Diameter	Multiplier
1"	0.04	4"	0.65
2"	0.16	6"	1.47
3"	0.37	Other	radius ² * 0.163

Time	Temp (°F or °C)	pH	Cond. (mS or (μS))	Turbidity (NTUs)	Gals. Removed	Observations
1023	17.5	7.10	1222	5000	1.5	
1025	17.6	7.06	1219	7000	3.0	
1027	17.6	7.03	1217	7000	4.5	

Did well dewater? Yes No Gallons actually evacuated: 4.5

Sampling Date: 3-22-13 Sampling Time: 1030 Depth to Water: 10.17

Sample I.D.: MW-10 Laboratory: Kiff CalScience Other McCampbell

Analyzed for: TPH-G BTEX MTBE TPH-D Oxygenates (5) Other: See we

EB I.D. (if applicable): @ _____ Time Duplicate I.D. (if applicable): _____

Analyzed for: TPH-G BTEX MTBE TPH-D Oxygenates (5) Other: _____

D.O. (if req'd):	Pre-purge:	mg/L	Post-purge:	mg/L
O.R.P. (if req'd):	Pre-purge:	mV	Post-purge:	mV

WELL MONITORING DATA SHEET

Project #: <u>130322-101</u>	Client: <u>CEG</u>
Sampler: <u>JD</u>	Date: <u>3-22-03</u>
Well I.D.: <u>MW-13</u>	Well Diameter: <u>2</u> 3 4 6 8
Total Well Depth (TD): <u>19.82</u>	Depth to Water (DTW): <u>9.39</u>
Depth to Free Product: <u>—</u>	Thickness of Free Product (feet): <u>—</u>
Referenced to: <u>PVC</u> Grade	D.O. Meter (if req'd): YSI HACH
DTW with 80% Recharge [(Height of Water Column x 0.20) + DTW]: <u>11.47</u>	

Purge Method: Bailer Waterra Sampling Method: Bailer
 Disposable Bailer Peristaltic Disposable Bailer
 Positive Air Displacement Extraction Pump Extraction Port
 Electric Submersible Other _____ Dedicated Tubing

Other: _____

$\frac{160}{1} \text{ (Gals.)} \times \frac{3}{1} = 480 \text{ Gals.}$ <p>1 Case Volume Specified Volumes Calculated Volume</p>	<table border="1" style="width: 100%; border-collapse: collapse; font-size: small;"> <thead> <tr> <th>Well Diameter</th> <th>Multiplier</th> <th>Well Diameter</th> <th>Multiplier</th> </tr> </thead> <tbody> <tr> <td>1"</td> <td>0.04</td> <td>4"</td> <td>0.65</td> </tr> <tr> <td>2"</td> <td>0.16</td> <td>6"</td> <td>1.47</td> </tr> <tr> <td>3"</td> <td>0.37</td> <td>Other</td> <td>radius² * 0.163</td> </tr> </tbody> </table>	Well Diameter	Multiplier	Well Diameter	Multiplier	1"	0.04	4"	0.65	2"	0.16	6"	1.47	3"	0.37	Other	radius ² * 0.163
Well Diameter	Multiplier	Well Diameter	Multiplier														
1"	0.04	4"	0.65														
2"	0.16	6"	1.47														
3"	0.37	Other	radius ² * 0.163														

Time	Temp (°F or °C)	pH	Cond. (mS or <u>µS</u>)	Turbidity (NTUs)	Gals. Removed	Observations
1141	17.5	7.05	10.21	>1000	1.6	
1144	17.5	7.05	10.36	>1000	3.2	
1147	17.5	7.05	10.70	>1000	4.8	

Did well dewater? Yes No Gallons actually evacuated: 4.8

Sampling Date: 3-22-03 Sampling Time: 1150 Depth to Water: 9.42

Sample I.D.: MW-13 Laboratory: Kiff CalScience Other: Mcampsey

Analyzed for: TPH-G BTEX MTBE TPH-D Oxygenates (5) Other: See OOC

EB I.D. (if applicable): @ Time Duplicate I.D. (if applicable):

Analyzed for: TPH-G BTEX MTBE TPH-D Oxygenates (5) Other:

D.O. (if req'd):	Pre-purge:	mg/L	Post-purge:	mg/L
O.R.P. (if req'd):	Pre-purge:	mV	Post-purge:	mV

WELL MONITORING DATA SHEET

Project #: 130322-501	Client: CKG
Sampler: Jo	Date: 3-22-13
Well I.D.: MW-15	Well Diameter: (2) 3 4 6 8
Total Well Depth (TD): _____	Depth to Water (DTW): 11.90
Depth to Free Product: Dot 11.90	Thickness of Free Product (feet): 0.01
Referenced to: (PVC) Grade	D.O. Meter (if req'd): YSI HACH
DTW with 80% Recharge [(Height of Water Column x 0.20) + DTW]:	

Purge Method: ~~Bailer~~ ~~Water~~ Sampling Method: ~~Bailer~~
 Disposable Bailer Peristaltic Disposable Bailer
 Positive Air Displacement Extraction Pump Extraction Port
 Electric Submersible Other _____ Dedicated Tubing
 Other: _____

_____ (Gals.) X _____ = _____ Gals. I Case Volume Specified Volumes Calculated Volume	<table border="1" style="width: 100%; border-collapse: collapse;"> <thead> <tr> <th>Well Diameter</th> <th>Multiplier</th> <th>Well Diameter</th> <th>Multiplier</th> </tr> </thead> <tbody> <tr> <td>1"</td> <td>0.04</td> <td>4"</td> <td>0.65</td> </tr> <tr> <td>2"</td> <td>0.16</td> <td>6"</td> <td>1.47</td> </tr> <tr> <td>3"</td> <td>0.37</td> <td>Other</td> <td>radius² * 0.163</td> </tr> </tbody> </table>	Well Diameter	Multiplier	Well Diameter	Multiplier	1"	0.04	4"	0.65	2"	0.16	6"	1.47	3"	0.37	Other	radius ² * 0.163
Well Diameter	Multiplier	Well Diameter	Multiplier														
1"	0.04	4"	0.65														
2"	0.16	6"	1.47														
3"	0.37	Other	radius ² * 0.163														

Time	Temp (°F or °C)	pH	Cond. (mS or µS)	Turbidity (NTUs)	Gals. Removed	Observations
SPH detected		w/ interface probe		sock	saturated	w SPH
sock replaced		NO sample		taken		
sock replaced						

Did well dewater? Yes No Gallons actually evacuated: _____

Sampling Date: _____ Sampling Time: _____ Depth to Water: _____

Sample I.D.: _____ Laboratory: Kiff CalScience Other _____

Analyzed for: TPH-G BTEX MTBE TPH-D Oxygenates (5) Other: _____

EB I.D. (if applicable): _____ @ _____ Time Duplicate I.D. (if applicable): _____

Analyzed for: TPH-G BTEX MTBE TPH-D Oxygenates (5) Other: _____

D.O. (if req'd):	Pre-purge:	mg/L	Post-purge:	mg/L
O.R.P. (if req'd):	Pre-purge:	mV	Post-purge:	mV

WELL MONITORING DATA SHEET

Project #: 130322-J01	Client: CKG
Sampler: SK	Date: 3-22-13
Well I.D.: MW-16	Well Diameter: ② 3 4 6 8 _____
Total Well Depth (TD): 19.91	Depth to Water (DTW): 9.52
Depth to Free Product:	Thickness of Free Product (feet):
Referenced to: <u>PVC</u> Grade	D.O. Meter (if req'd): YSI HACH
DTW with 80% Recharge [(Height of Water Column x 0.20) + DTW]: 11.60	

Purge Method: Bailer	Watterra	Sampling Method: Bailer
<input checked="" type="checkbox"/> Disposable Bailer	<input type="checkbox"/> Peristaltic	<input checked="" type="checkbox"/> Disposable Bailer
<input type="checkbox"/> Positive Air Displacement	<input type="checkbox"/> Extraction Pump	<input type="checkbox"/> Extraction Port
<input type="checkbox"/> Electric Submersible	Other _____	<input type="checkbox"/> Dedicated Tubing
Other: _____		

$\underline{1.6} \text{ (Gals.)} \times \underline{3} = \underline{4.8} \text{ Gals.}$ I Case Volume Specified Volumes Calculated Volume	<table border="1" style="width: 100%; border-collapse: collapse; font-size: small;"> <thead> <tr> <th>Well Diameter</th> <th>Multiplier</th> <th>Well Diameter</th> <th>Multiplier</th> </tr> </thead> <tbody> <tr> <td>1"</td> <td>0.04</td> <td>4"</td> <td>0.65</td> </tr> <tr> <td>2"</td> <td>0.16</td> <td>6"</td> <td>1.47</td> </tr> <tr> <td>3"</td> <td>0.37</td> <td>Other</td> <td>radius² * 0.163</td> </tr> </tbody> </table>	Well Diameter	Multiplier	Well Diameter	Multiplier	1"	0.04	4"	0.65	2"	0.16	6"	1.47	3"	0.37	Other	radius ² * 0.163
Well Diameter	Multiplier	Well Diameter	Multiplier														
1"	0.04	4"	0.65														
2"	0.16	6"	1.47														
3"	0.37	Other	radius ² * 0.163														

Time	Temp (°F or °C)	pH	Cond. (mS or <u>µS</u>)	Turbidity (NTUs)	Gals. Removed	Observations
1129	18.3	7.5	655	>1000	1.6	
1131	18.6	7.4	647	>1000	3.2	
1133	18.9	7.4	632	>1000	4.8	

Did well dewater? Yes No Gallons actually evacuated: 4.8

Sampling Date: 3-22-13 Sampling Time: 1143 Depth to Water: 10.37

Sample I.D.: MW-16 Laboratory: Kiff CalScience Other: McCampbell

Analyzed for: TPH-G BTEX MTBE TPH-D Oxygenates (5) Other: SEE COC

EB I.D. (if applicable): @ Time Duplicate I.D. (if applicable):

Analyzed for: TPH-G BTEX MTBE TPH-D Oxygenates (5) Other:

D.O. (if req'd):	Pre-purge:	mg/L	Post-purge:	mg/L
O.R.P. (if req'd):	Pre-purge:	mV	Post-purge:	mV

WELL MONITORING DATA SHEET

Project #: 130322-J01	Client: CKG
Sampler: J0	Date: 3-22-13
Well I.D.: MW-17	Well Diameter: (2) 3 4 6 8
Total Well Depth (TD): 15.47	Depth to Water (DTW): 9.21
Depth to Free Product: —	Thickness of Free Product (feet): —
Referenced to: (PVC) Grade	D.O. Meter (if req'd): YSI HACH
DTW with 80% Recharge [(Height of Water Column x 0.20) + DTW]: 10.46	

Purge Method: Bailer Waterra Sampling Method: Bailer
 Disposable Bailer Peristaltic Disposable Bailer
 Positive Air Displacement Extraction Pump Extraction Port
 Electric Submersible Other _____ Dedicated Tubing

Other: _____

$\frac{1.0}{\text{I Case Volume}} (\text{Gals.}) \times \frac{3}{\text{Specified Volumes}} = \frac{3.0}{\text{Calculated Volume}} \text{ Gals.}$	<table border="1" style="width: 100%; border-collapse: collapse;"> <thead> <tr> <th>Well Diameter</th> <th>Multiplier</th> <th>Well Diameter</th> <th>Multiplier</th> </tr> </thead> <tbody> <tr> <td>1"</td> <td>0.04</td> <td>4"</td> <td>0.65</td> </tr> <tr> <td>2"</td> <td>0.16</td> <td>6"</td> <td>1.47</td> </tr> <tr> <td>3"</td> <td>0.37</td> <td>Other</td> <td>radius² * 0.163</td> </tr> </tbody> </table>	Well Diameter	Multiplier	Well Diameter	Multiplier	1"	0.04	4"	0.65	2"	0.16	6"	1.47	3"	0.37	Other	radius ² * 0.163
Well Diameter	Multiplier	Well Diameter	Multiplier														
1"	0.04	4"	0.65														
2"	0.16	6"	1.47														
3"	0.37	Other	radius ² * 0.163														

Time	Temp (°F or °C)	pH	Cond. (mS or µS)	Turbidity (NTUs)	Gals. Removed	Observations
1040	17.7	7.31	1129	>1000	1.0	odor / sheen
1042	17.7	7.41	1134	>1000	2.0	—
1044	17.7	7.40	1137	>1000	3.0	—
sock replaced						

Did well dewater? Yes No Gallons actually evacuated: 3.0

Sampling Date: 3-22-13 Sampling Time: 1050 Depth to Water: 9.77

Sample I.D.: MW-17 Laboratory: Kiff CalScience Other McCampbell

Analyzed for: TPH-G BTEX MTBE TPH-D Oxygenates (5) Other: see COC

EB I.D. (if applicable): @ _____ Time Duplicate I.D. (if applicable): _____

Analyzed for: TPH-G BTEX MTBE TPH-D Oxygenates (5) Other: _____

D.O. (if req'd):	Pre-purge:	mg/L	Post-purge:	mg/L
O.R.P. (if req'd):	Pre-purge:	mV	Post-purge:	mV

APPENDIX B



Analytical Report

CKG Environmental P.O. Box 246 St. Helena, CA 94574	Client Project ID: Owens Brockway Glass Plant	Date Sampled: 03/22/13
		Date Received: 03/25/13
	Client Contact: Christina Kennedy	Date Reported: 04/01/13
	Client P.O.:	Date Completed: 04/01/13

WorkOrder: 1303696

April 01, 2013

Dear Christina:

Enclosed within are:

- 1) The results of the **7** analyzed samples from your project: **Owens Brockway Glass Plant,**
- 2) QC data for the above samples, and
- 3) A copy of the chain of custody.

All analyses were completed satisfactorily and all QC samples were found to be within our control limits.

If you have any questions or concerns, please feel free to give me a call. Thank you for choosing

McC Campbell Analytical Laboratories for your analytical needs.

Best regards,

Angela Rydelius
 Laboratory Manager
 McC Campbell Analytical, Inc.

The analytical results relate only to the items tested.

BLAINE

TECH SERVICES, INC.

1680 ROGERS AVENUE
 SAN JOSE, CALIFORNIA 95112-1105
 FAX (408) 573-7771
 PHONE (408) 573-0555

1303696

CONDUCT ANALYSIS TO DETECT

LAB McC Campbell DHS # _____
 ALL ANALYSES MUST MEET SPECIFICATIONS AND DETECTION LIMITS SET BY CALIFORNIA DHS AND
 EPA RWQCB REGION _____
 LIA
 OTHER

CHAIN OF CUSTODY
 BTS # 130522-101
 CLIENT CKG Environmental
 SITE Owens Brockway Glass Plant
3600 Alameda Avenue
Oakland, CA

C = COMPOSITE ALL CONTAINERS

SAMPLE I.D.	DATE	TIME	MATRIX	CONTAINERS		TPHg / BTEX (8015/8021)	TPH-d, TPH-mo w/silica gel clean up	CONDUCT ANALYSIS TO DETECT										
			S=SOIL W=H ₂ O	TOTAL														
MW-8	3-22-13	1125	W	4	mixed	X	X											
MW-10		1030				X	X											
MW-13		1150				X	X											
MW-16		1143				X	X											
MW-17		1050				X	X											
MW-19		1055				X	X											
MW-20		1035	0	0		X	X											

SPECIAL INSTRUCTIONS
 Invoice and Report to : CKG Environmental
 808 Zinfindel Lane, St Helena, CA 94574
 Attn: Christina Kennedy
Dissolved product in samples MW-2 and MW-6
Please provide EDF and PDF of results

SAMPLING COMPLETED	DATE	TIME	SAMPLING PERFORMED BY	DATE	TIME	RECEIVED BY	DATE	TIME
	3-22-13	1330	J. Ortiz	3-22-13	1445		3-22-13	1445
RELEASED BY				DATE	TIME	RECEIVED BY	DATE	TIME
				3-25-13	1355		3/22/13	1305
RELEASED BY				DATE	TIME	RECEIVED BY	DATE	TIME
				3/25	1440		3/22/13	1640
SHIPPED VIA	DATE SENT	TIME SENT	COOLER #					



1534 Willow Pass Rd
 Pittsburg, CA 94565-1701
 (925) 252-9262

CHAIN-OF-CUSTODY RECORD

WorkOrder: 1303696

ClientCode: CKGS

WaterTrax
 WriteOn
 EDF
 Excel
 EQuIS
 Email
 HardCopy
 ThirdParty
 J-flag

Report to:

Christina Kennedy
 CKG Environmental
 P.O. Box 246
 St. Helena, CA 94574
 (707) 967-8080 FAX: (707) 967-8080

Email: ckennedy@geologist.com
 cc:
 PO:
 ProjectNo: Owens Brockway Glass Plant

Bill to:

Accounts Payable
 CKG Environmental
 808 Zinfandel Lane
 St. Helena, CA 94574

Requested TAT:

5 days

Date Received: **03/25/2013**

Date Printed: **03/25/2013**

Lab ID	Client ID	Matrix	Collection Date	Hold	Requested Tests (See legend below)												
					1	2	3	4	5	6	7	8	9	10	11	12	
1303696-001	MW-8	Water	3/22/2013 11:25	<input type="checkbox"/>	A	B											
1303696-002	MW-10	Water	3/22/2013 10:30	<input type="checkbox"/>	A	B											
1303696-003	MW-13	Water	3/22/2013 11:50	<input type="checkbox"/>	A	B											
1303696-004	MW-16	Water	3/22/2013 11:43	<input type="checkbox"/>	A	B											
1303696-005	MW-17	Water	3/22/2013 10:50	<input type="checkbox"/>	A	B											
1303696-006	MW-19	Water	3/22/2013 10:55	<input type="checkbox"/>	A	B											
1303696-007	MW-20	Water	3/22/2013 10:35	<input type="checkbox"/>	A	B											

Test Legend:

1	G-MBTX_W	2	TPH(DMO)WSG_W	3		4		5	
6		7		8		9		10	
11		12							

Prepared by: Zoraida Cortez

Comments:

NOTE: Soil samples are discarded 60 days after results are reported unless other arrangements are made (Water samples are 30 days).
 Hazardous samples will be returned to client or disposed of at client expense.



Sample Receipt Checklist

Client Name: **CKG Environmental**

Date and Time Received: **3/25/2013 7:18:45 PM**

Project Name: **#1; Cal Trans**

LogIn Reviewed by: **Zoraida Cortez**

WorkOrder N°: **1303696** Matrix: Water

Carrier: Benjamin Yslas (MAI Courier)

Chain of Custody (COC) Information

Chain of custody present?	Yes <input checked="" type="checkbox"/>	No <input type="checkbox"/>
Chain of custody signed when relinquished and received?	Yes <input checked="" type="checkbox"/>	No <input type="checkbox"/>
Chain of custody agrees with sample labels?	Yes <input checked="" type="checkbox"/>	No <input type="checkbox"/>
Sample IDs noted by Client on COC?	Yes <input checked="" type="checkbox"/>	No <input type="checkbox"/>
Date and Time of collection noted by Client on COC?	Yes <input checked="" type="checkbox"/>	No <input type="checkbox"/>
Sampler's name noted on COC?	Yes <input type="checkbox"/>	No <input checked="" type="checkbox"/>

Sample Receipt Information

Custody seals intact on shipping container/cooler?	Yes <input type="checkbox"/>	No <input type="checkbox"/>	NA <input checked="" type="checkbox"/>
Shipping container/cooler in good condition?	Yes <input checked="" type="checkbox"/>	No <input type="checkbox"/>	
Samples in proper containers/bottles?	Yes <input checked="" type="checkbox"/>	No <input type="checkbox"/>	
Sample containers intact?	Yes <input checked="" type="checkbox"/>	No <input type="checkbox"/>	
Sufficient sample volume for indicated test?	Yes <input checked="" type="checkbox"/>	No <input type="checkbox"/>	

Sample Preservation and Hold Time (HT) Information

All samples received within holding time?	Yes <input checked="" type="checkbox"/>	No <input type="checkbox"/>	
Container/Temp Blank temperature	Cooler Temp: 4.8°C		NA <input type="checkbox"/>
Water - VOA vials have zero headspace / no bubbles?	Yes <input checked="" type="checkbox"/>	No <input type="checkbox"/>	No VOA vials submitted <input type="checkbox"/>
Sample labels checked for correct preservation?	Yes <input checked="" type="checkbox"/>	No <input type="checkbox"/>	
Metal - pH acceptable upon receipt (pH<2)?	Yes <input type="checkbox"/>	No <input type="checkbox"/>	NA <input checked="" type="checkbox"/>
Samples Received on Ice?	Yes <input checked="" type="checkbox"/>	No <input type="checkbox"/>	

(Ice Type: WET ICE)

* NOTE: If the "No" box is checked, see comments below.

 Comments:



CKG Environmental P.O. Box 246 St. Helena, CA 94574	Client Project ID: Owens Brockway Glass Plant	Date Sampled: 03/22/13
	Client Contact: Christina Kennedy	Date Received: 03/25/13
	Client P.O.:	Date Extracted: 03/27/13-03/28/13
		Date Analyzed: 03/27/13-03/28/13

Gasoline Range (C6-C12) Volatile Hydrocarbons as Gasoline with BTEX and MTBE*

Extraction method: SW5030B

Analytical methods: SW8021B/8015Bm

Work Order: 1303696

Lab ID	Client ID	Matrix	TPH(g)	MTBE	Benzene	Toluene	Ethylbenzene	Xylenes	DF	% SS	Comments
001A	MW-8	W	420	---	ND	ND	ND	ND	1	95	d7,d9
002A	MW-10	W	150	---	ND	ND	ND	0.88	1	93	d7
003A	MW-13	W	ND	---	ND	ND	ND	ND	1	100	
004A	MW-16	W	ND	---	ND	ND	ND	ND	1	101	
005A	MW-17	W	4500	---	8.2	1.4	ND	4.1	1	---#	d7,d9,b6
006A	MW-19	W	620	---	ND	ND	ND	1.1	1	96	d7
007A	MW-20	W	ND	---	ND	ND	ND	ND	1	99	

Reporting Limit for DF =1; ND means not detected at or above the reporting limit	W	50	5.0	0.5	0.5	0.5	0.5	0.5	µg/L
	S	1.0	0.05	0.005	0.005	0.005	0.005	0.005	mg/Kg

* water and vapor samples are reported in ug/L, soil/sludge/solid samples in mg/kg, wipe samples in µg/wipe, product/oil/non-aqueous liquid samples and all TCLP & SPLP extracts in mg/L.

cluttered chromatogram; sample peak coelutes w/surrogate peak; low surrogate recovery due to matrix interference. %SS = Percent Recovery of Surrogate Standard; DF = Dilution Factor

The following descriptions of the TPH chromatogram are cursory in nature and McC Campbell Analytical is not responsible for their interpretation:
 b6) lighter than water immiscible sheen/product is present
 d7) strongly aged gasoline or diesel range compounds are significant in the TPH(g) chromatogram
 d9) no recognizable pattern



QC SUMMARY REPORT FOR SW8021B/8015Bm

W.O. Sample Matrix: Water

QC Matrix: Water

BatchID: 75915

WorkOrder: 1303696

EPA Method: SW8021B/8015Bm		Extraction: SW5030B					Spiked Sample ID: 1303763-001A			
Analyte	Sample	Spiked	MS	MSD	MS-MSD	LCS	Acceptance Criteria (%)			
	µg/L	µg/L	% Rec.	% Rec.	% RPD	% Rec.	MS / MSD	RPD	LCS	
TPH(btex) [£]	ND	60	101	97.2	3.67	101	70 - 130	20	70 - 130	
MTBE	ND	10	75.7	75	0.840	83	70 - 130	20	70 - 130	
Benzene	ND	10	85.8	87	1.46	87.3	70 - 130	20	70 - 130	
Toluene	ND	10	85.9	87.3	1.58	87.4	70 - 130	20	70 - 130	
Ethylbenzene	ND	10	84.1	86.1	2.34	87.2	70 - 130	20	70 - 130	
Xylenes	ND	30	84.4	86.4	2.33	87.3	70 - 130	20	70 - 130	
%SS:	96	10	98	97	0.899	99	70 - 130	20	70 - 130	

All target compounds in the Method Blank of this extraction batch were ND less than the method RL with the following exceptions:
 NONE

BATCH 75915 SUMMARY

Lab ID	Date Sampled	Date Extracted	Date Analyzed	Lab ID	Date Sampled	Date Extracted	Date Analyzed
1303696-001A	03/22/13 11:25 AM	03/28/13	03/28/13 2:49 AM	1303696-002A	03/22/13 10:30 AM	03/27/13	03/27/13 7:21 PM
1303696-003A	03/22/13 11:50 AM	03/27/13	03/27/13 8:51 PM	1303696-004A	03/22/13 11:43 AM	03/27/13	03/27/13 9:51 PM
1303696-005A	03/22/13 10:50 AM	03/28/13	03/28/13 8:15 AM	1303696-006A	03/22/13 10:55 AM	03/27/13	03/27/13 10:21 PM
1303696-007A	03/22/13 10:35 AM	03/28/13	03/28/13 7:16 PM				

MS = Matrix Spike; MSD = Matrix Spike Duplicate; LCS = Laboratory Control Sample; LCSD = Laboratory Control Sample Duplicate; RPD = Relative Percent Deviation.
 % Recovery = 100 * (MS-Sample) / (Amount Spiked); RPD = 100 * (MS - MSD) / ((MS + MSD) / 2).
 MS / MSD spike recoveries and / or %RPD may fall outside of laboratory acceptance criteria due to one or more of the following reasons: a) the sample is inhomogenous AND contains significant concentrations of analyte relative to the amount spiked, or b) the spiked sample's matrix interferes with the spike recovery.
 £ TPH(btex) = sum of BTEX areas from the FID.
 # cluttered chromatogram; sample peak coelutes with surrogate peak.
 N/A = not enough sample to perform matrix spike and matrix spike duplicate.
 NR = matrix interference and/or analyte concentration in sample exceeds spike amount for soil matrix or exceeds 2x spike amount for water matrix or sample diluted due to high matrix or analyte content, or inconsistency in sample containers.



QC SUMMARY REPORT FOR SW8015B

W.O. Sample Matrix: Water

QC Matrix: Water

BatchID: 75802

WorkOrder: 1303696

EPA Method: SW8015B		Extraction: SW3510C/3630C					Spiked Sample ID: N/A			
Analyte	Sample	Spiked	MS	MSD	MS-MSD	LCS	Acceptance Criteria (%)			
	µg/L	µg/L	% Rec.	% Rec.	% RPD	% Rec.	MS / MSD	RPD	LCS	
TPH-Diesel (C10-C23)	N/A	1000	N/A	N/A	N/A	115	N/A	N/A	70 - 130	
%SS:	N/A	625	N/A	N/A	N/A	93	N/A	N/A	70 - 130	

All target compounds in the Method Blank of this extraction batch were ND less than the method RL with the following exceptions:
 NONE

BATCH 75802 SUMMARY

Lab ID	Date Sampled	Date Extracted	Date Analyzed	Lab ID	Date Sampled	Date Extracted	Date Analyzed
1303696-001B	03/22/13 11:25 AM	03/25/13	03/26/13 4:32 PM	1303696-002B	03/22/13 10:30 AM	03/25/13	03/26/13 6:56 PM
1303696-003B	03/22/13 11:50 AM	03/25/13	03/26/13 8:07 PM	1303696-004B	03/22/13 11:43 AM	03/25/13	03/26/13 9:19 PM
1303696-005B	03/22/13 10:50 AM	03/25/13	03/28/13 7:41 PM	1303696-006B	03/22/13 10:55 AM	03/25/13	03/26/13 5:44 PM
1303696-007B	03/22/13 10:35 AM	03/25/13	03/26/13 9:19 PM				

MS = Matrix Spike; MSD = Matrix Spike Duplicate; LCS = Laboratory Control Sample; LCSD = Laboratory Control Sample Duplicate; RPD = Relative Percent Deviation.
 % Recovery = 100 * (MS-Sample) / (Amount Spiked); RPD = 100 * (MS - MSD) / ((MS + MSD) / 2).
 MS / MSD spike recoveries and / or %RPD may fall outside of laboratory acceptance criteria due to one or more of the following reasons: a) the sample is inhomogenous AND contains significant concentrations of analyte relative to the amount spiked, or b) the spiked sample's matrix interferes with the spike recovery.
 N/A = not enough sample to perform matrix spike and matrix spike duplicate.
 NR = analyte concentration in sample exceeds spike amount for soil matrix or exceeds 2x spike amount for water matrix or sample diluted due to high matrix or analyte content.