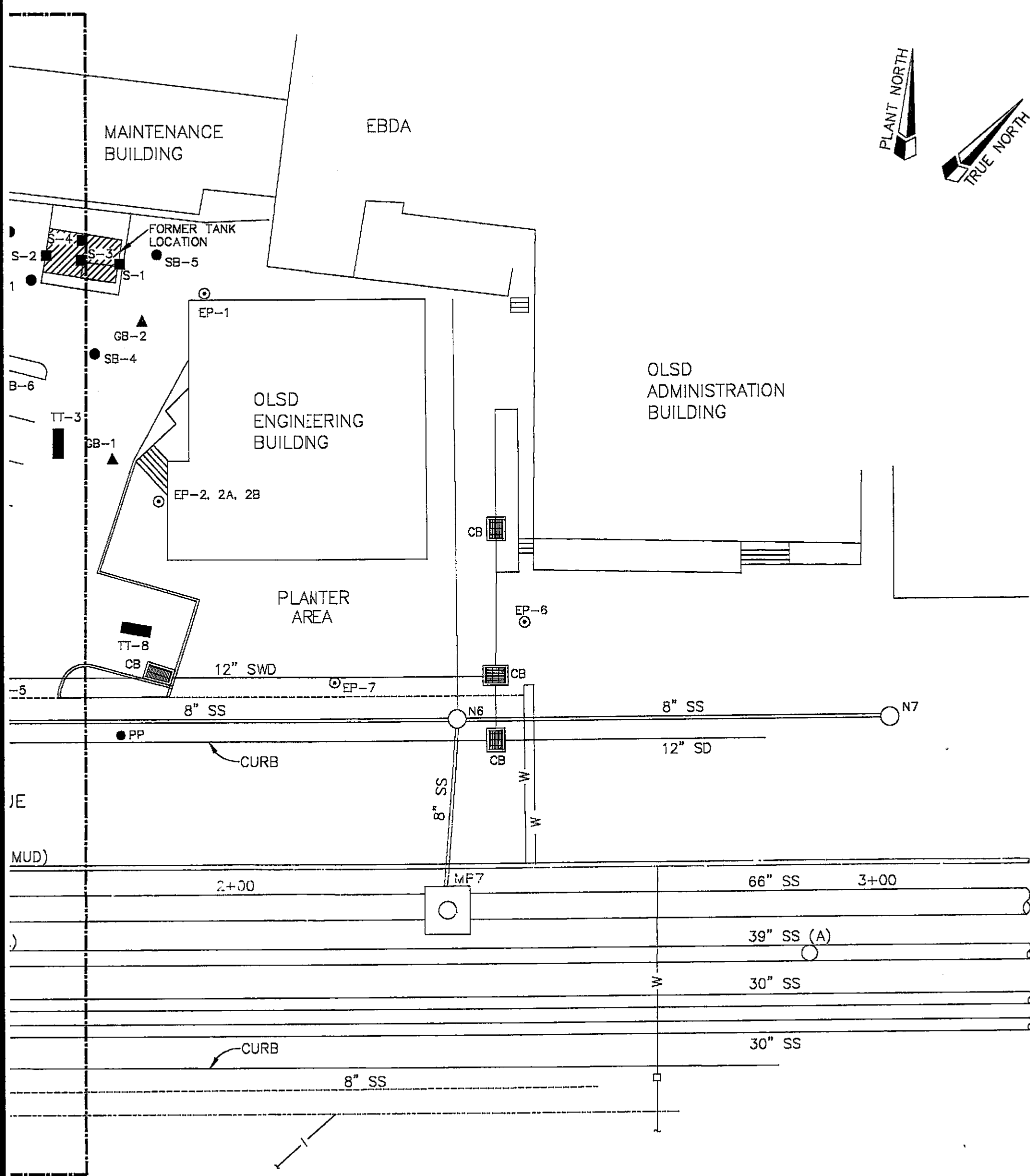


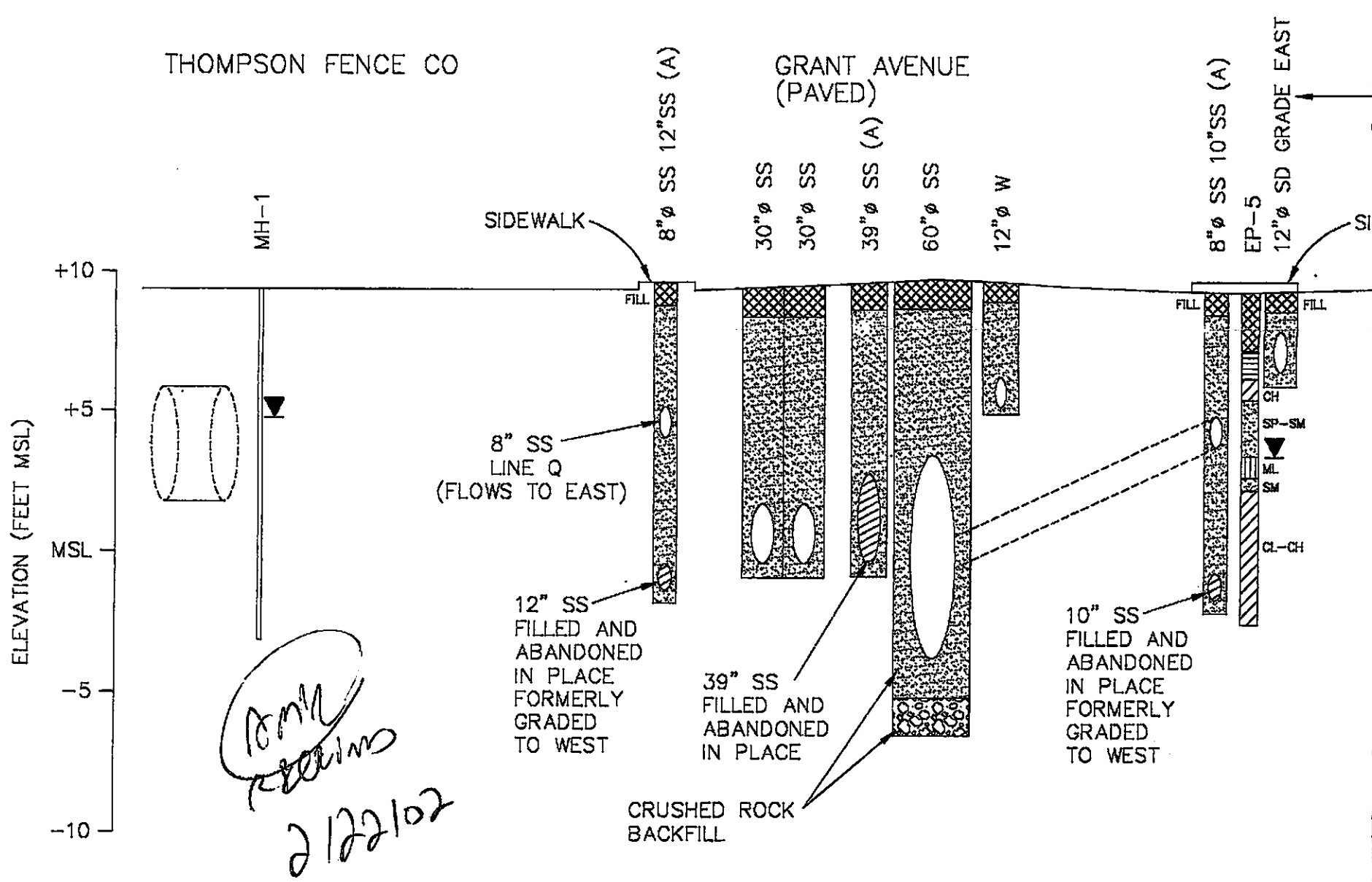
PLAN VIEW

SCALE: 1"=20'



PLAN VIEW

SCALE: 1"=20'



Handwritten:
 2/22/02

CROSS SECTION

Designed
Drawn
Checked
Date

THE SUTTON GROUP
 Engineering and Environmental Services
 51 Shuey Drive
 Moraga, California 94556-2620
 Phone (510) 631-1688
 fax (510) 631-1371

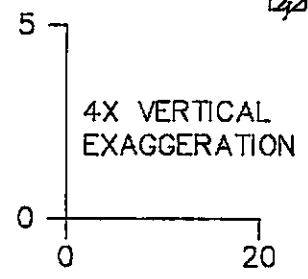
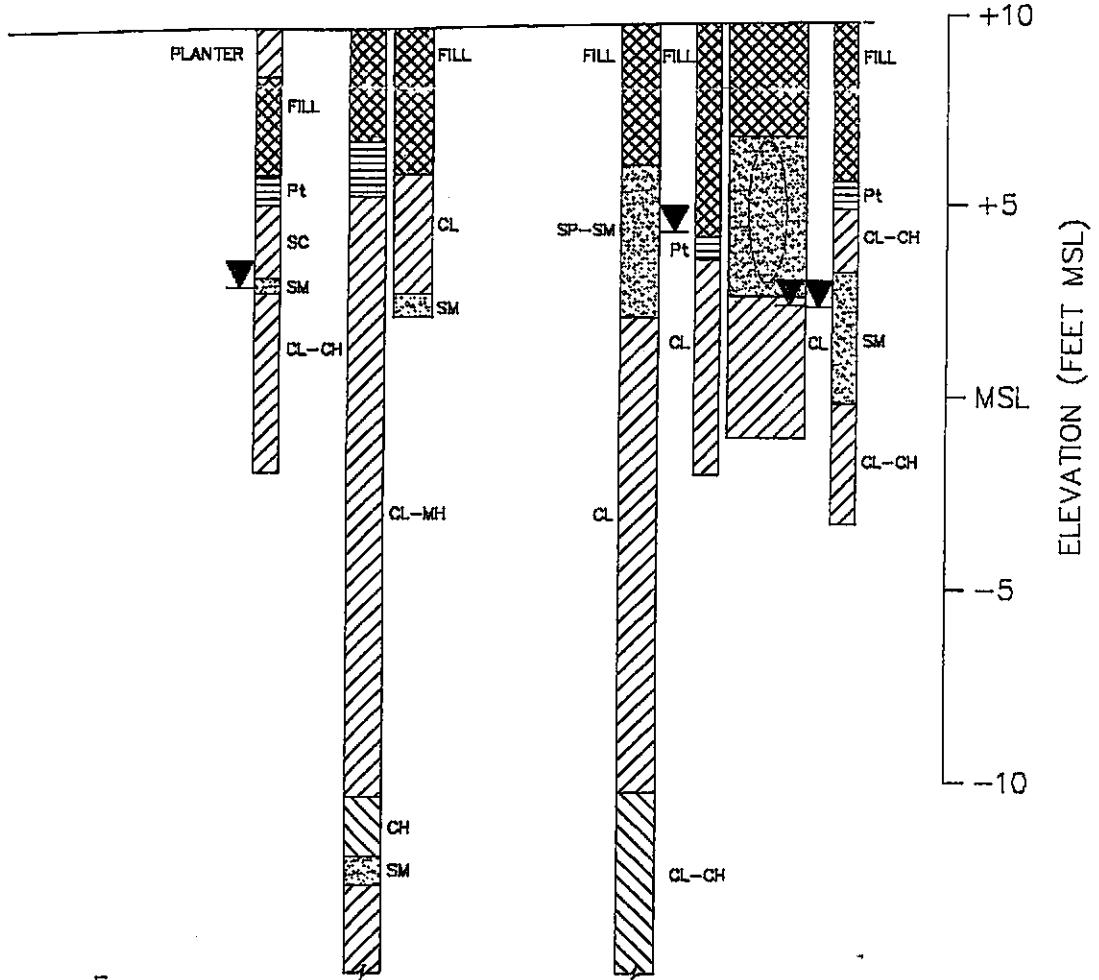
Submitted: _____

OLSD
PARKING
LOT (PAVED)

MAINTENANCE BUILDING

SIDEWALK

EP-3 GB-1 TT-3 GB-2 EP-1 FORMER TANK LOCATION EP-3



ORO LOMA SANITARY DISTRICT

Gasoline Tank Area Plan and Cross Section

Scale	AS SHOWN
Job No.	3027.8
Sheet	
Fig No.	FIGURE 4

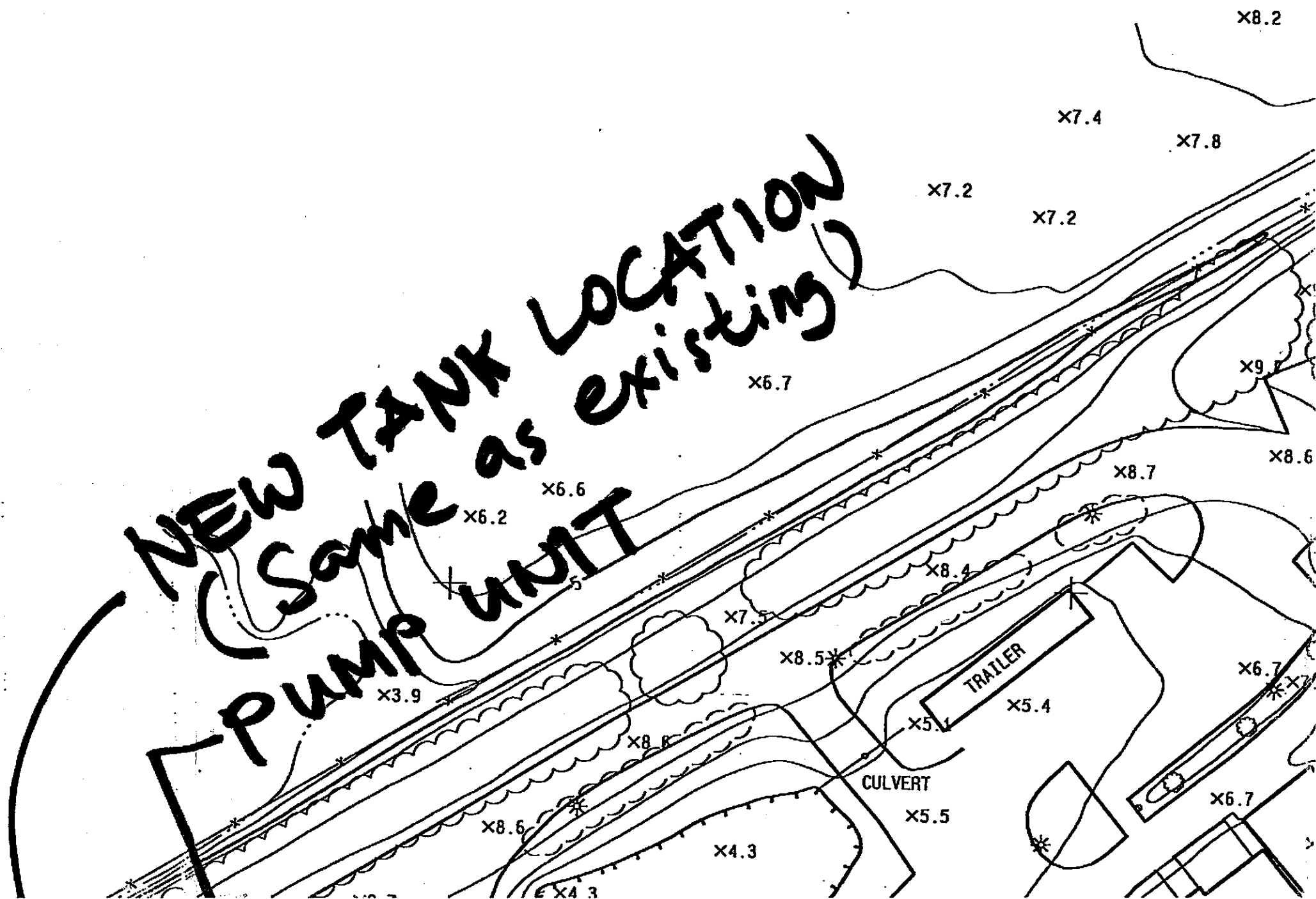
EXHIBIT B

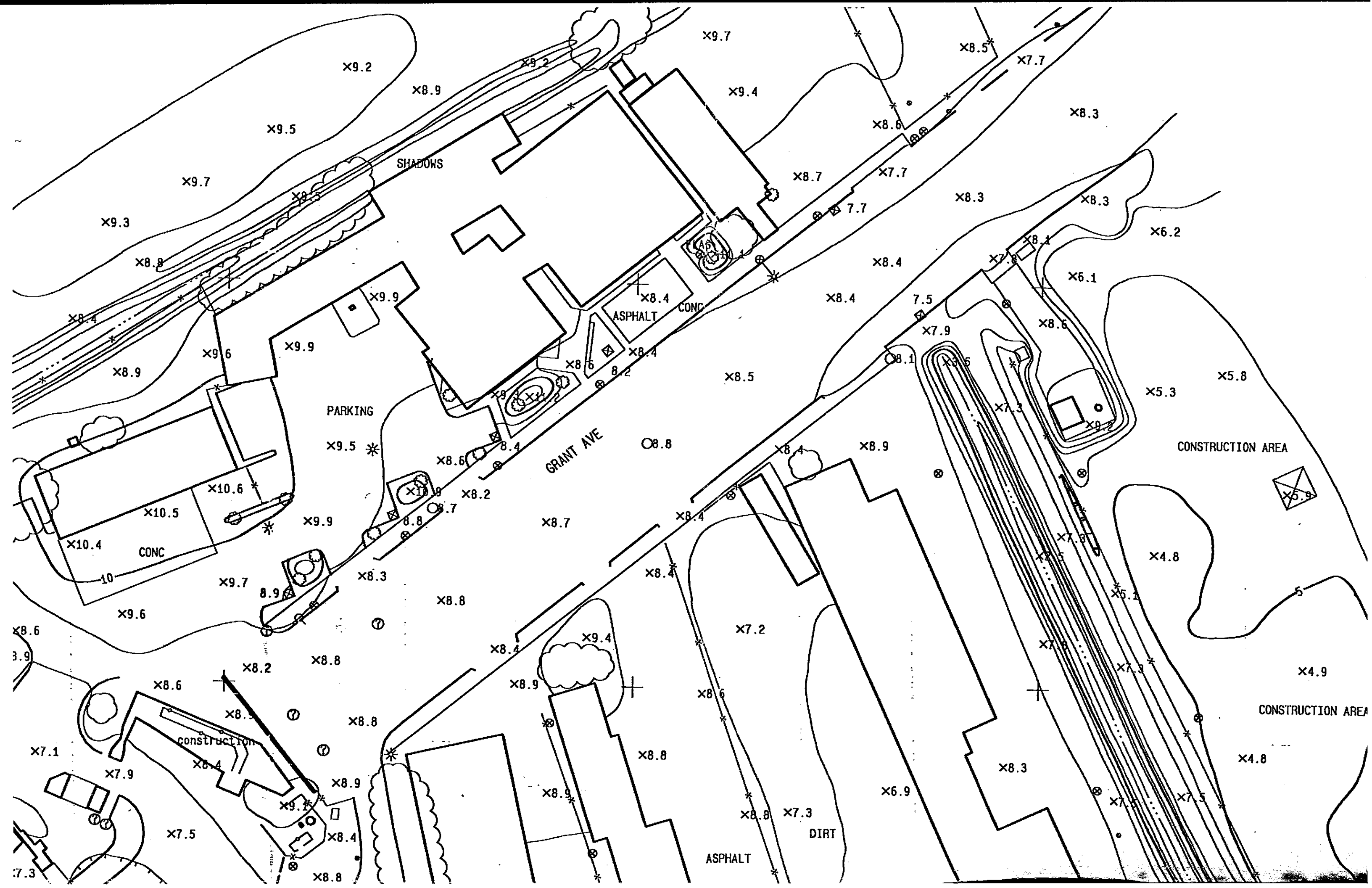
N 430000

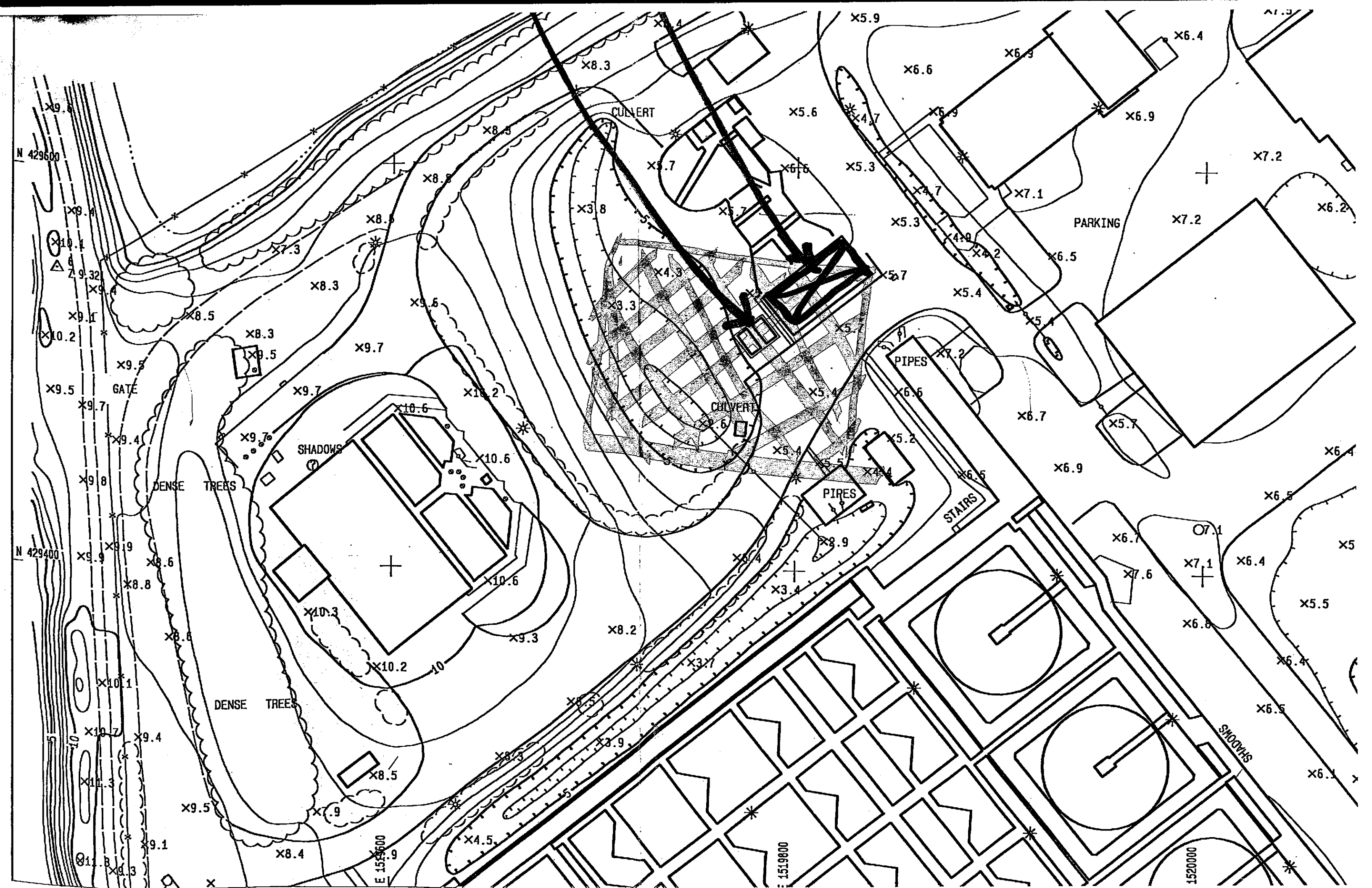
N 429800



NEW TANK LOCATION
 (Same as existing)
 PUMP UNIT









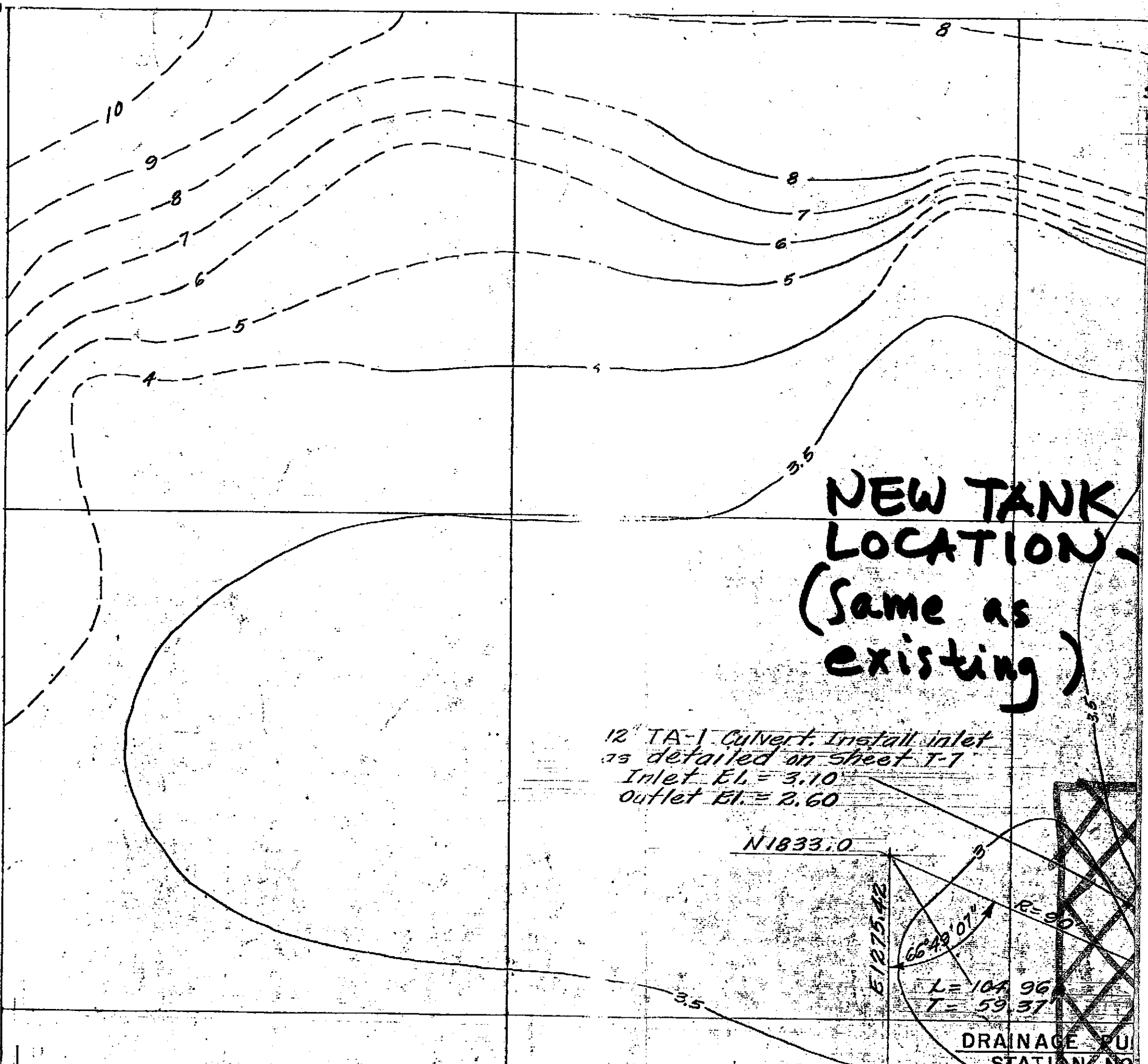
N 2000

N 1900

N 1800

1-

2-



**NEW TANK
LOCATION
(Same as
existing)**

12" TA-1 Culvert. Install inlet
as detailed on sheet T-7
Inlet El. = 3.10
Outlet El. = 2.60

N 1833.0



$R = 90'$
 $L = 104.96'$
 $T = 59.37'$

DRAINAGE PU
STATION NO

Sta. A=0+00
P.O.T. N 1975.53
E 1359.95

At Sta. A=1+05⁸³
offset road ϕ 2.00
feet, as shown.

$\Delta = 85^{\circ}12'24''$
N 1947.82
E 1373.67

N 1946.60
E 1483.28
 $\Delta = 161^{\circ}53'45''$
R = 10'6"

GRIT
WASHER
STRUCTURE

A.C. paving (3)
N 1936.12
E 1439.00
Rwd. divider
5" R.W.G.

N 1969.00
E 1439.00

N 1894.50
E 1399.67

GRIT TANK

Rwd. divider

2%
Approx

Rwd. divider
5" R.W.G.

N 1876.55
E 1439.00

N 1858.66
E 1450.00

N 1845.13
E 1450.00

N 1828.00
E 1440.33

PUMP UNIT

2%
Approx

Rwd. divider
5" R.W.G.

FUEL
OIL
STORAGE
TANKS

N 1805.50
E 1369.17

N 1802.5

N 1787.12
E 1343.12

Pump disch. lines 7A

B=6131.0
P=77.9826
Curve #7

583°12'24"E ROAD A
5=0.005

B=4199.30 B.C.

Curve #7
N 1871.80
Plugged tee with
1" marker post
Construct
New Ditch
(s=0.005)

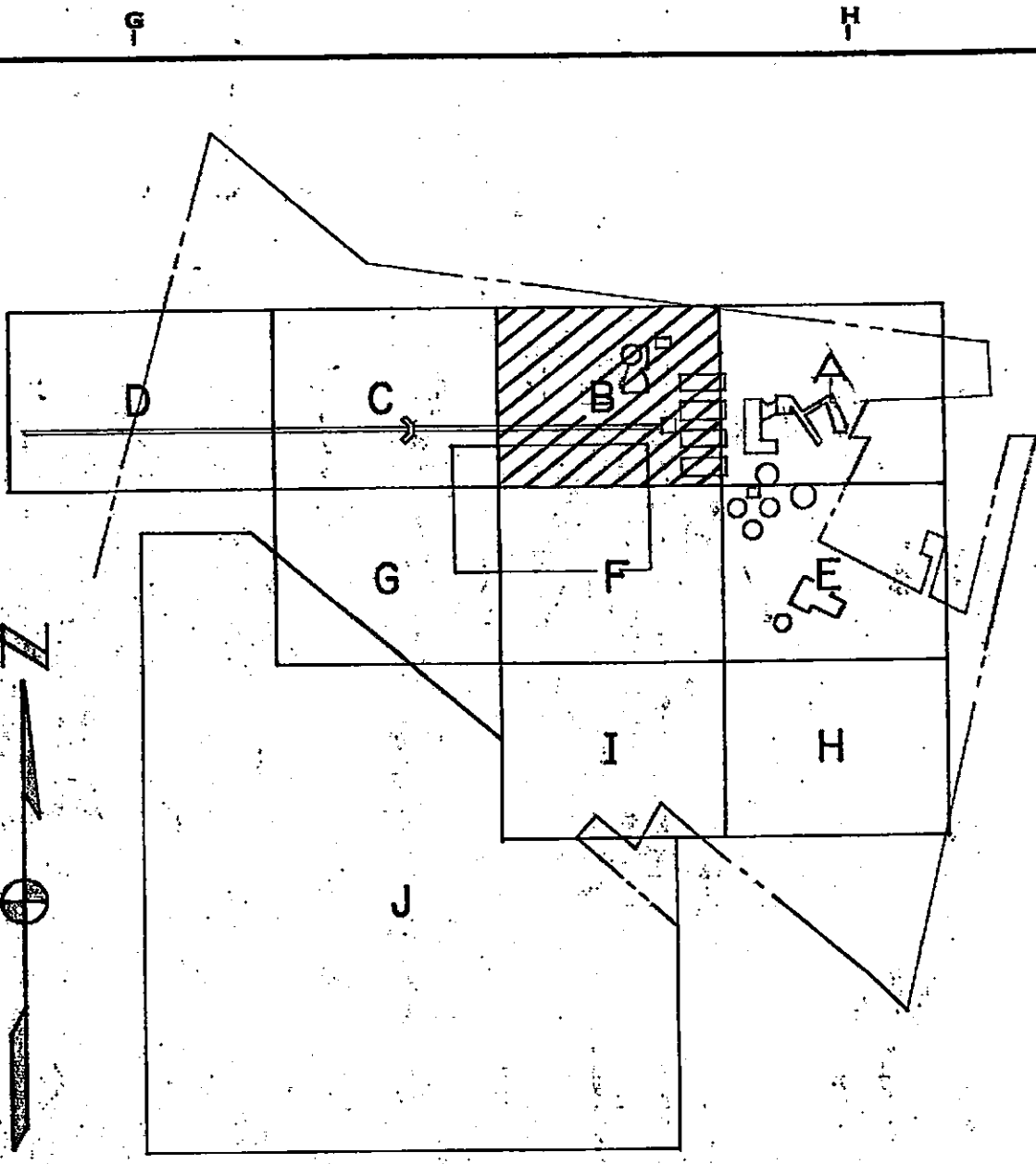
12" TA-1 pipe culvert
Construct curve using
beveled end pipe,
install inlet & outlet
as detailed on
sheet T-7
Inlet El. = 4.40
Outlet El. = 3.70

Connect at 2" line and construct
1" TX-2" 2" water line to pump unit.

EXISTING
AERATION & SEDIMENTATION
UNITS 7 & 8


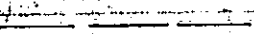
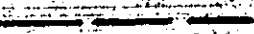



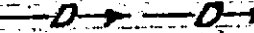
18.5' A
Connect at exist 3" line and construct
2" TX-2" 2" water line to pump unit.

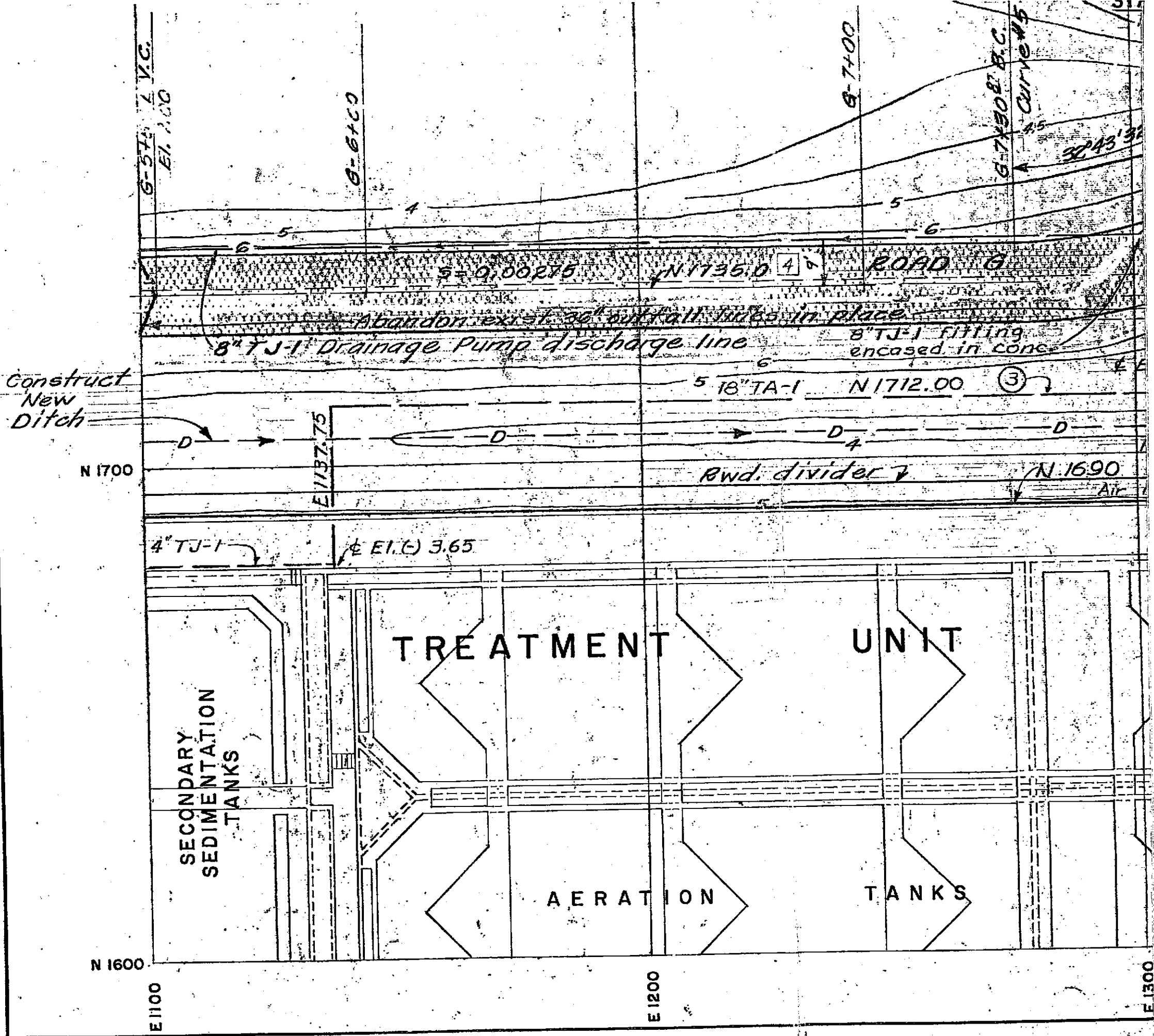
5.0 IN 1780.0 (top elev. = 4.40)
N 1854.2 E 1483.0



SHEET INDEX

LEGEND

-  Property Line
-  Existing buried pipe line
-  Buried pipe line - T.C.
-  Existing Surface Contour - E.I. 8.0
-  Finish surface Contour - E.I. 8.0 T.C.
-  A.C. Paving - T.C.
-  Drainage Ditch - T.C.



G-574 L.V.C.
E1. 7.00

G-640

G-700

G-730 B.C.
CURVES

32°43'32"

S = 0.00275

N 1735.0

ROAD

Abandon exist 36" outfall pipe in place

8" TJ-1 Drainage Pump discharge line

8" TJ-1 fitting
encased in conc

Construct
New
Ditch

5 18" TA-1 N 1712.00

N 1700

E1137.75

Rowd divider

N 1690

4" TJ-1

E1. (C) 3.65

TREATMENT

UNIT

SECONDARY
SEDIMENTATION
TANKS

AERATION

TANKS

N 1600

E1100

E1200

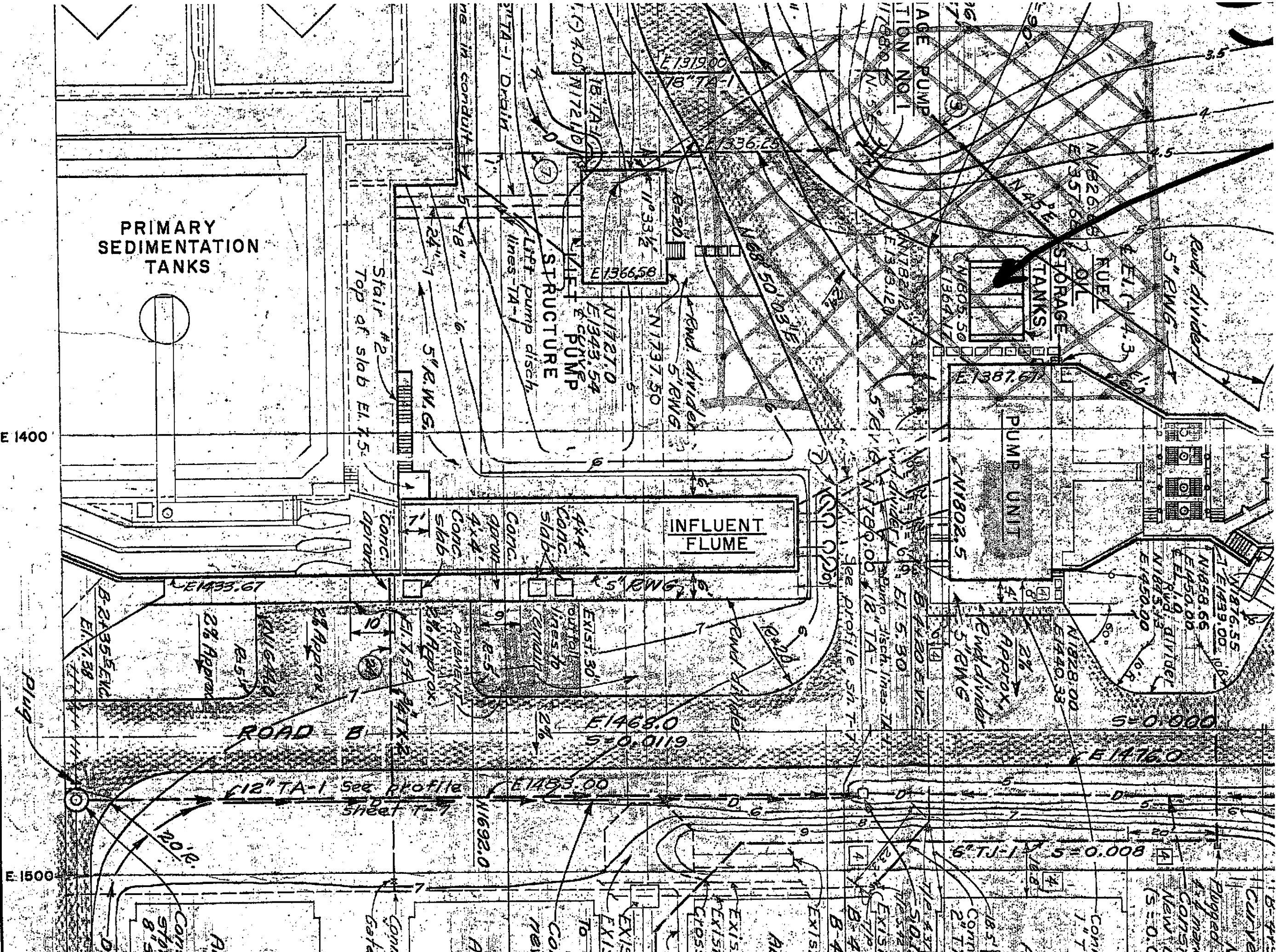
E1300

A

B

4131T "A"

E 1400
E 1500
D
C
E



2" TX-2 2 water line to pump unit.

IP 437 A
 S.D.J.N. 1780.0 (top elev. = 4.40)
 12.5.12 E1483.0
 Exist. 2" water line, 3"

TIP 763 A
 B-4110 P.L.V.C. - E1.5.53
 B-4100 B.V.C. - E1.5.60

Exist. 36" R.C.P. to be removed F.L. E1.5.3
**EXISTING
 AERATION & SEDIMENTATION
 UNITS 5 & 6**

Exist. 6" C.I. pipe @ E1.5.7
 Exist. 24" pipe, Inv. E1.6.2
 Cross under 5 lines @ approx. @ E1.3.0

Exist. 6" C.I. pipe, @ el. 5.7

EXIST. JUNCTION BOX
 EXIST. WEIR STRUCTURE
 To be modified - TC
 Construct new ditch

**EXISTING
 AERATION & SEDIMENTATION
 UNITS 3 & 4**

Connect ①
 Gate valve & union

EXISTING RAW SLUDGE
 STA. NO. 1

**EXISTING
 AERATION & SEDIMENTATION
 UNITS 1 & 2**

Construct new manhole over exist. 8"
 storm drain. Plug and abandon exist.
 8" storm drain West of new manhole.

ROAD C
 Existing 8" V.C.P.
 storm drain

6" TJ-1 Supernatant
 (see note 1, sht. G-16)
 & Exist. 48" pipe (R.C.P.)

PIPE LINE SCHEDULE

Line	Size	Pipe Type	Service
①	78"	A-1	Pump Station Influent
③	18", 4"	A-1, J-1	Waste activated sludge & tank drain
⑦	Varies	TX-2	No. 3 Water
⑭	3/4"	TX-2	No. 2 Well Water to Chlor. Residual Analyzer

SCALE 1" = 20'

REVISION	DATE	DESCRIPTION
④	9/1/69	AS BUILT
③	7/10/69	CHANGE ORDER NO. 8
②	11/25/68	CHANGE ORDER NO. 5
①	7/29/68	CLARIFICATION NO. 23

ORO LOMA SANITARY DISTRICT

2600 GRANT AVENUE, SAN LORENZO, CALIFORNIA

WATER POLLUTION CONTROL PLANT

**GENERAL
 LAYOUT PLAN
 AREA B**

KENNEDY ENGINEERS

604 MISSION STREET SAN FRANCISCO

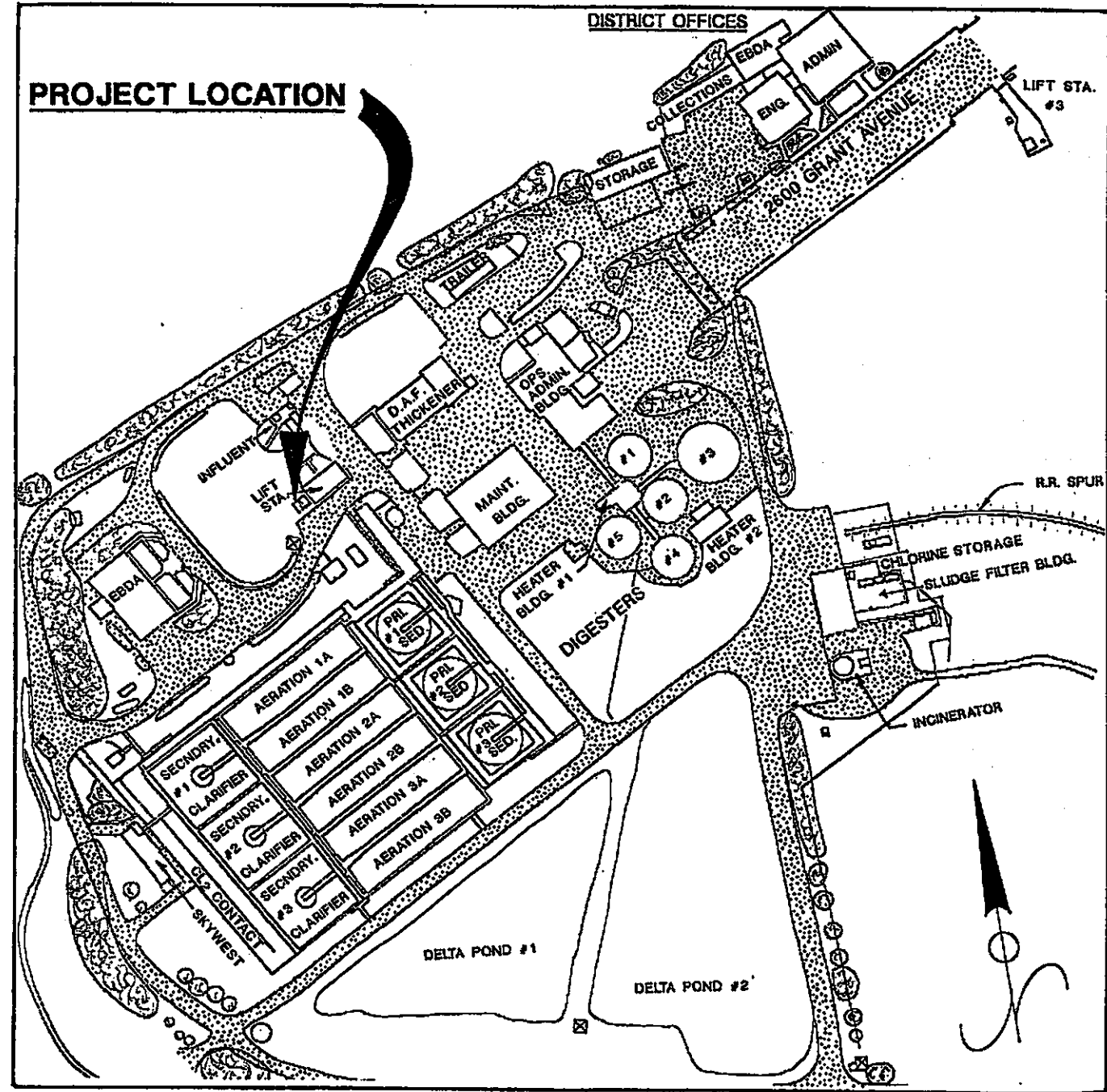
JOB NO. 63/89	SUBMITTED	DISTRICT JOB NO.
DRAWN JBW	Richard R. Kennedy	579
TRACED MLE/AM	APPROVED	SHEET NO.
CHECKED KBR	Paul H. Stanton	G-17
DATE MAR. 28/67	DISTRICT ENGINEER	GENERAL MANAGER

E1600

ORO LOMA SANITARY DISTRICT
ALAMEDA COUNTY, CALIFORNIA



ORO LOMA SANITARY DISTRICT AND CASTRO VALLEY SANITARY DISTRICT



PROJECT LOCATION

DISTRICT OFFICES

DELTA POND #1

DELTA POND #2

LOCATION MAP

D

WATER POLLUTION CONTROL PLANT

DIESEL FUEL REMEDIATION

PROJECT NO. 45-264-02
AUGUST 1993

INDEX OF DRAWINGS

<u>DRAWING</u>	<u>SHEET</u>	<u>TITLE</u>
	1	COVER SHEET
1	2	OLD TANKS REMOVAL PLAN
2	3	NEW TANK INSTALLATION PLAN

OAKL

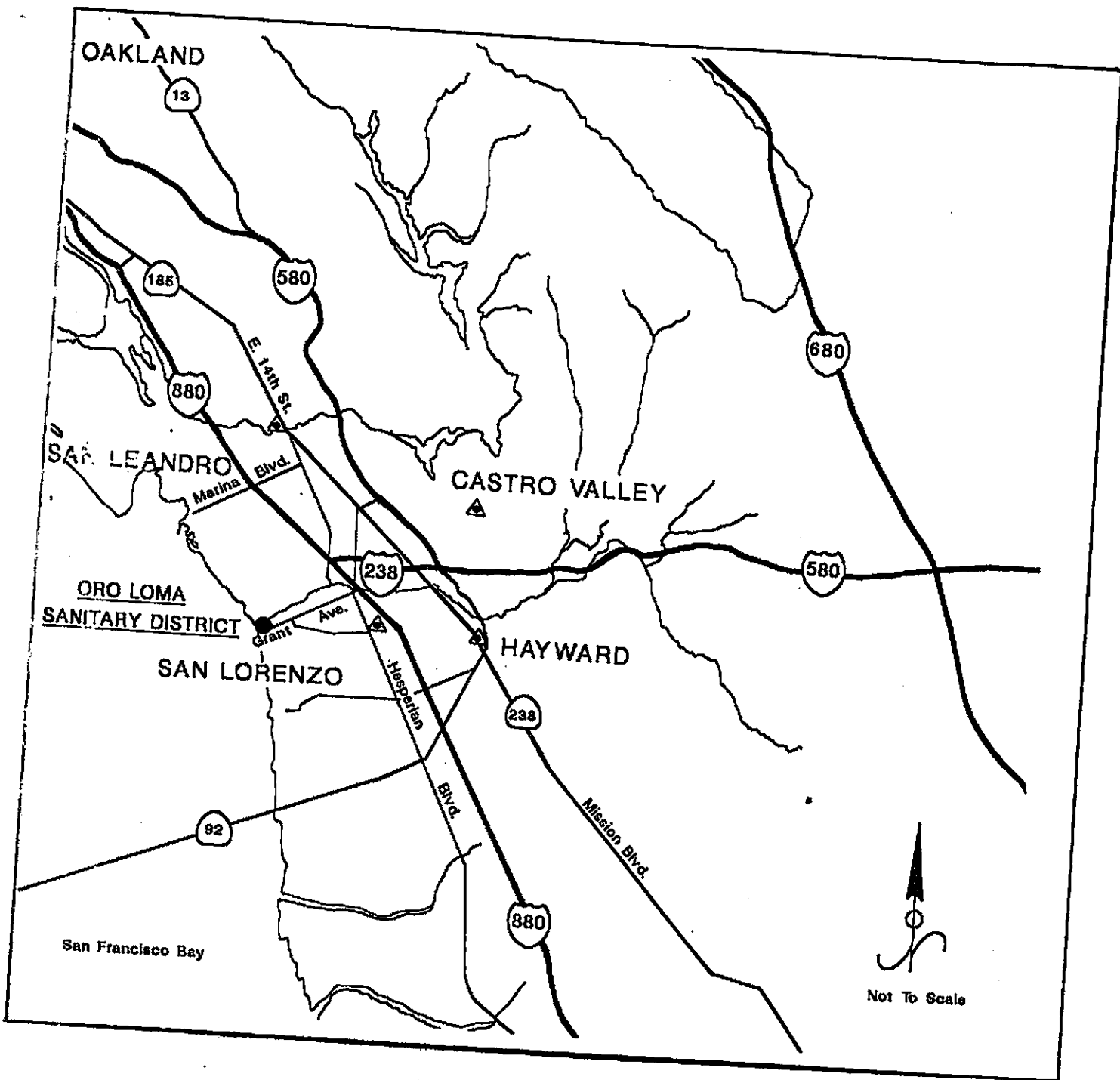


SANIT

OR
SANIT

Sai

85% SUBMITTAL



VICINITY MAP

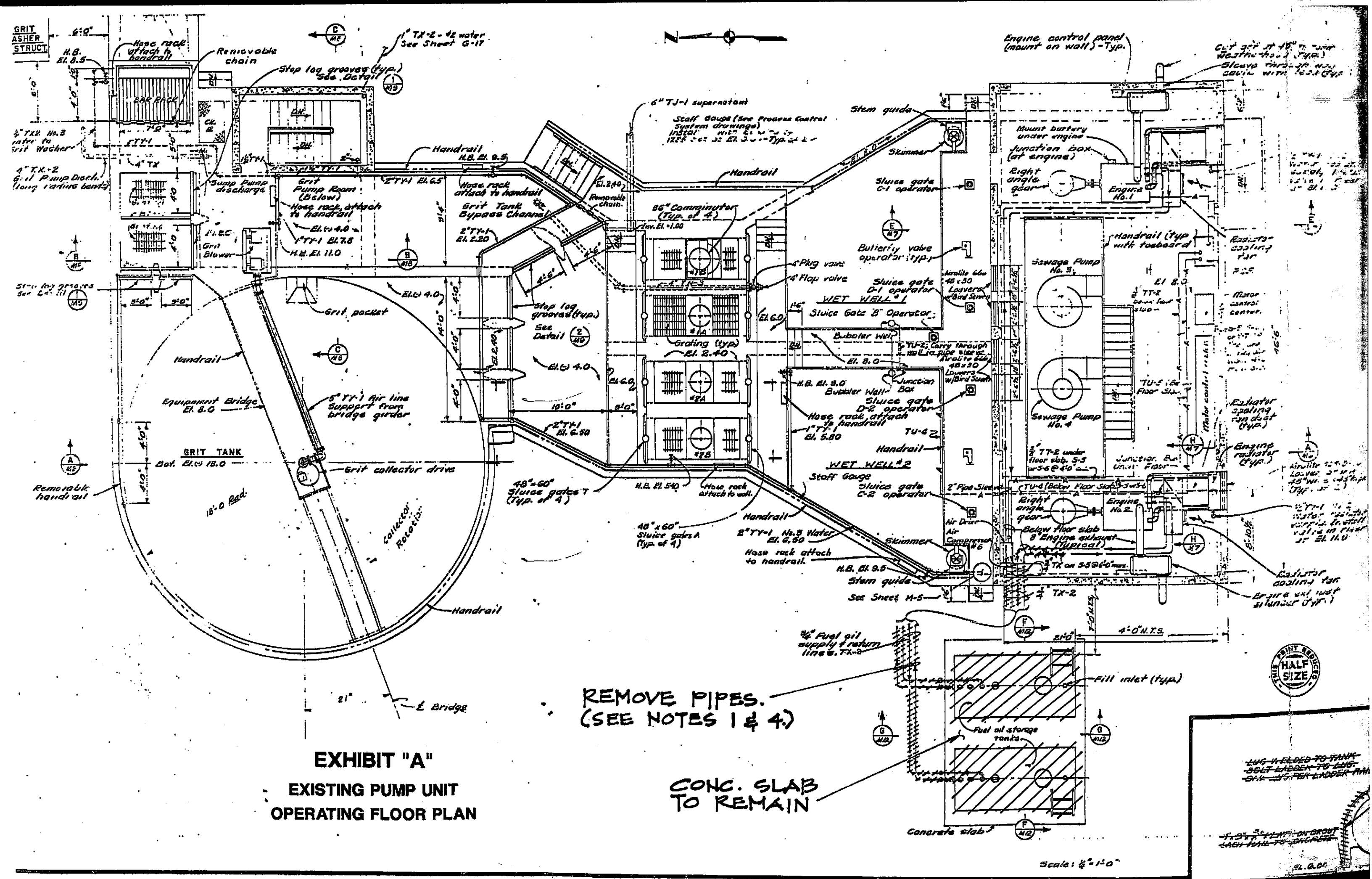


EXHIBIT "A"
EXISTING PUMP UNIT
OPERATING FLOOR PLAN

REMOVE PIPES.
(SEE NOTES 1 & 4.)

CONC. SLAB
TO REMAIN

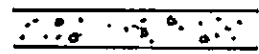
Scale: 1/8" = 1'-0"



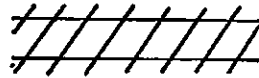
LUG WELDED TO TANK
 BELT LADEN TO LUG
 SHK. JOYNER LADDER

EL. 6.0'

LEGEND:



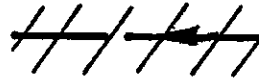
CONCRETE TO REMAIN



CONCRETE, MISC. STRUCTURES
TO BE REMOVED.

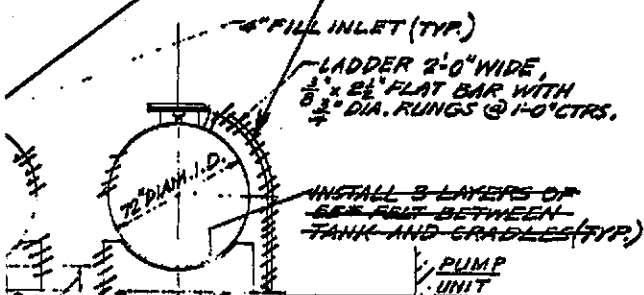


PIPING TO REMAIN.



PIPING TO BE REMOVED.

REMOVE
LADDER.



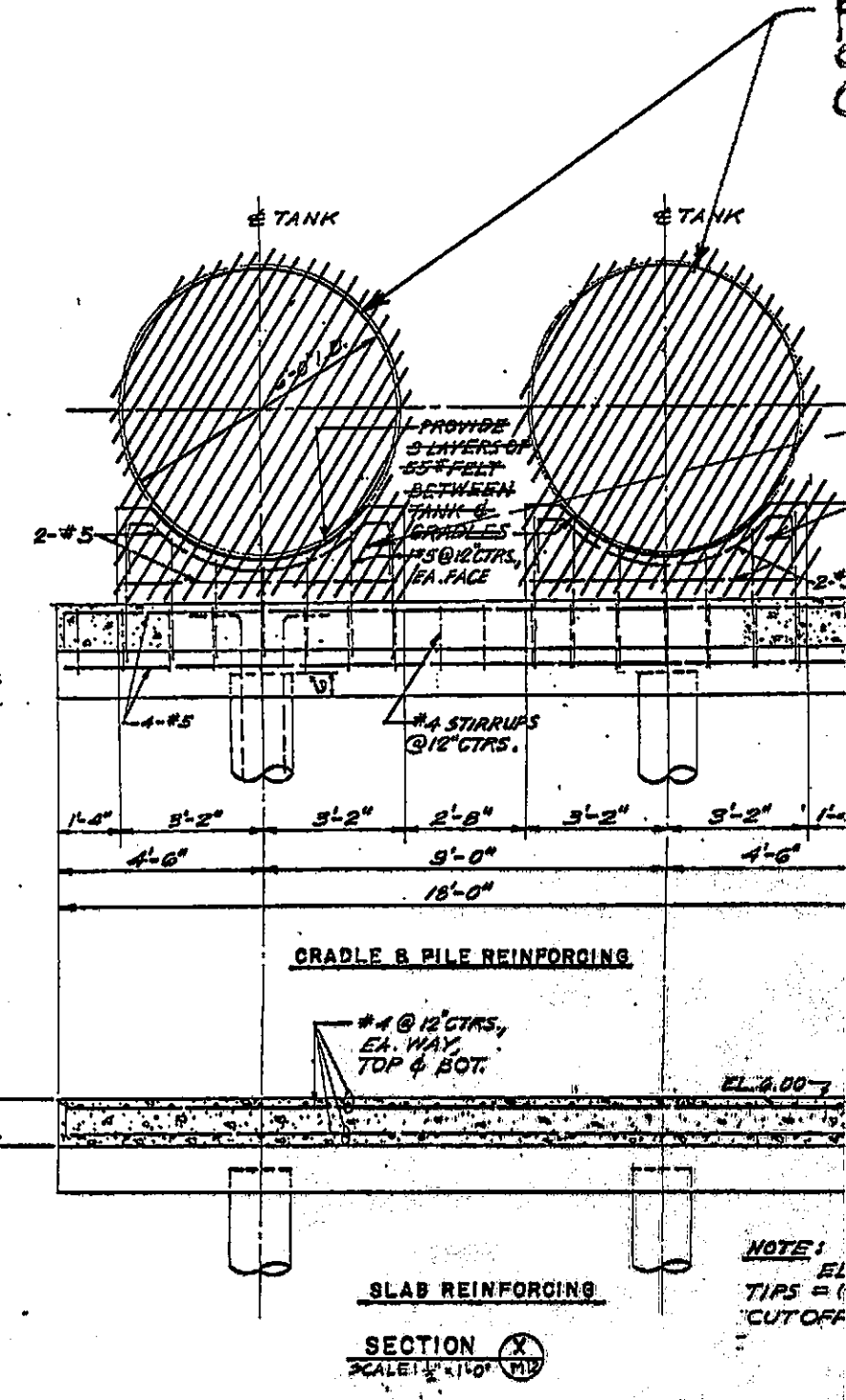
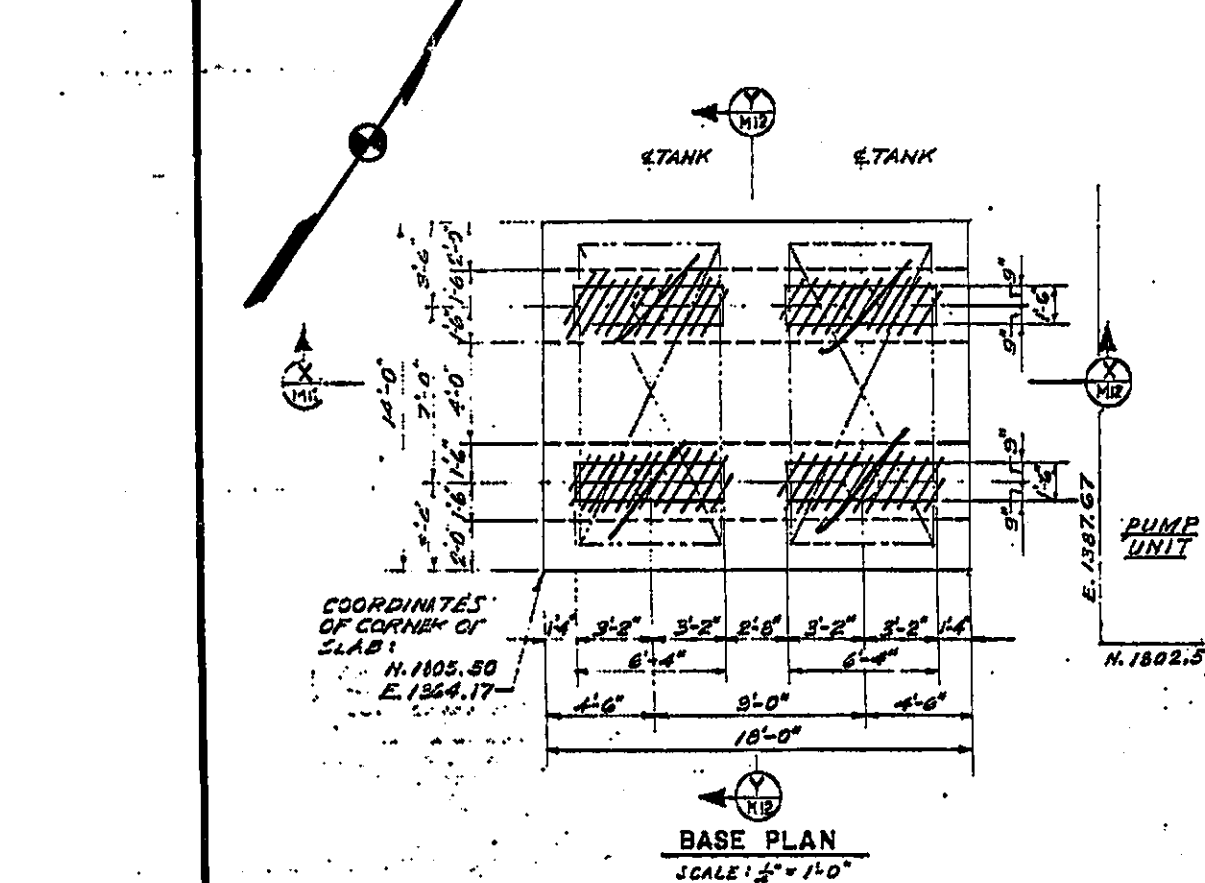
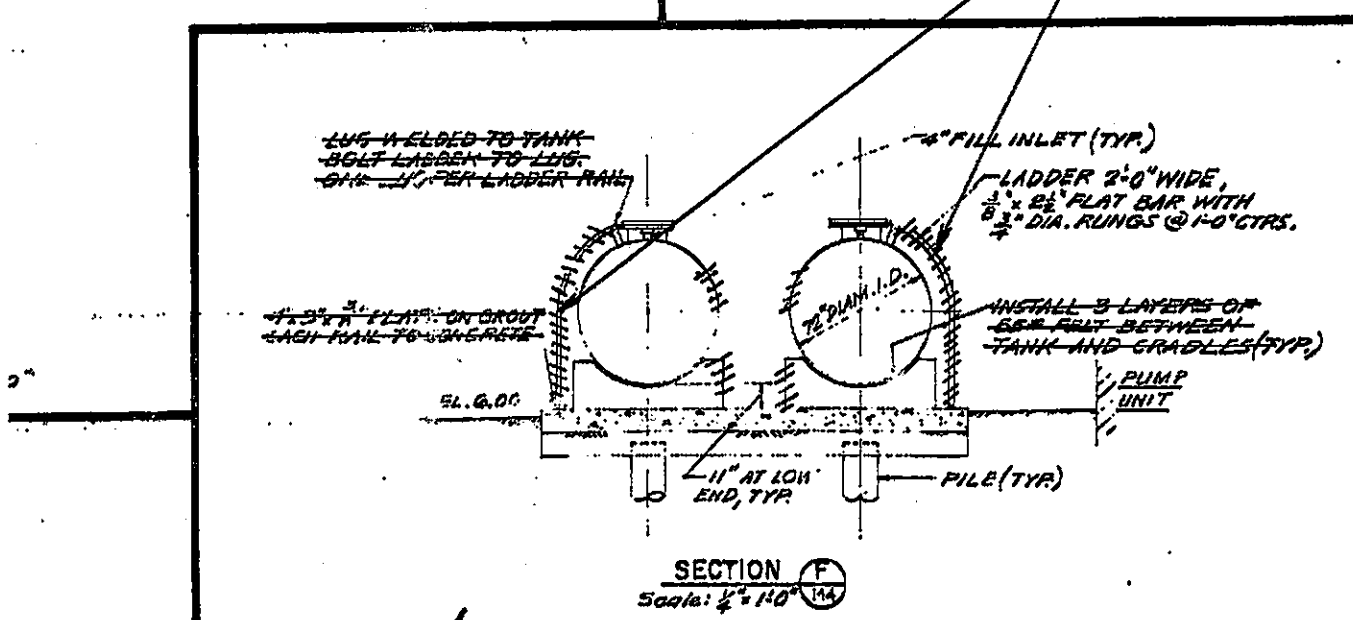
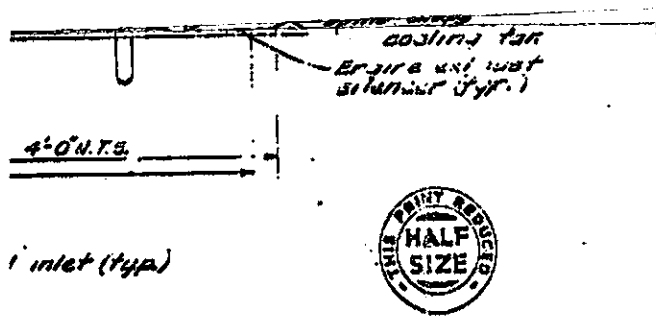
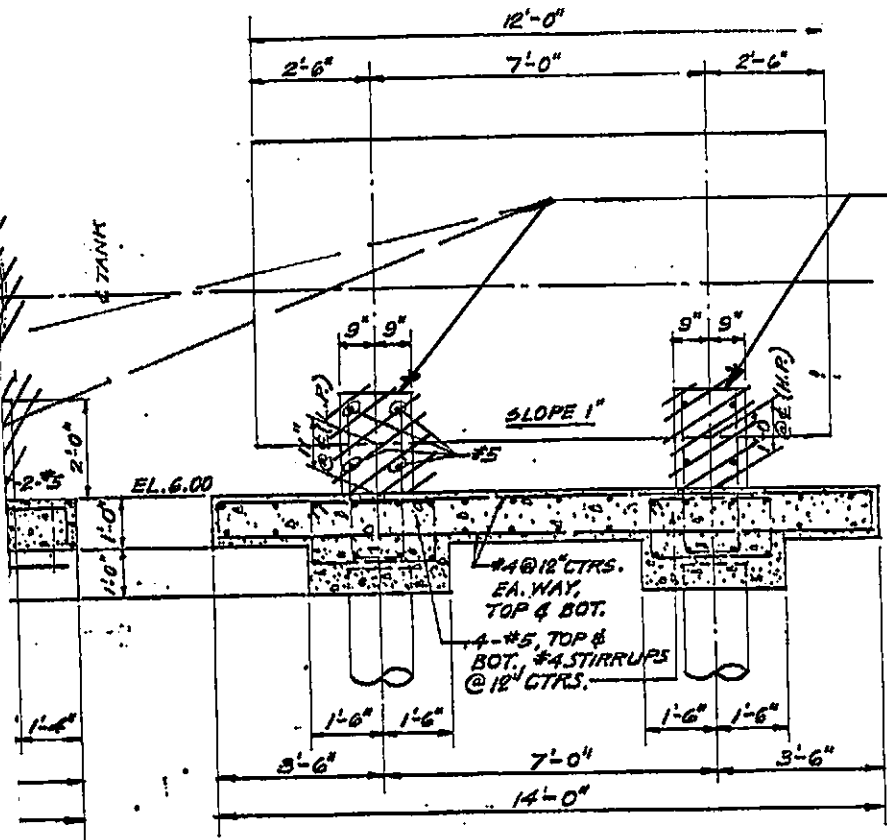


EXHIBIT "B"
**EXISTING PUMP UNIT
FUEL OIL STORAGE**

**DIESEL FUEL REMEDIATION
OLD TANKS REMOVAL PLAN**

DESIGNED BY _____
DRAWN BY MC
CHECKED BY DH
SUBMITTED BY MC

REMOVE FUEL OIL TANK. (SEE NOTE 1.)



REMOVE CONC. CRADLES. (SEE NOTE 3.)

SECTION Y
SCALE: 1/4" = 1'-0" M.P.E.

ELEVATION OF PILE (+) 45.00, PILE OFF ELEV. = 4.50

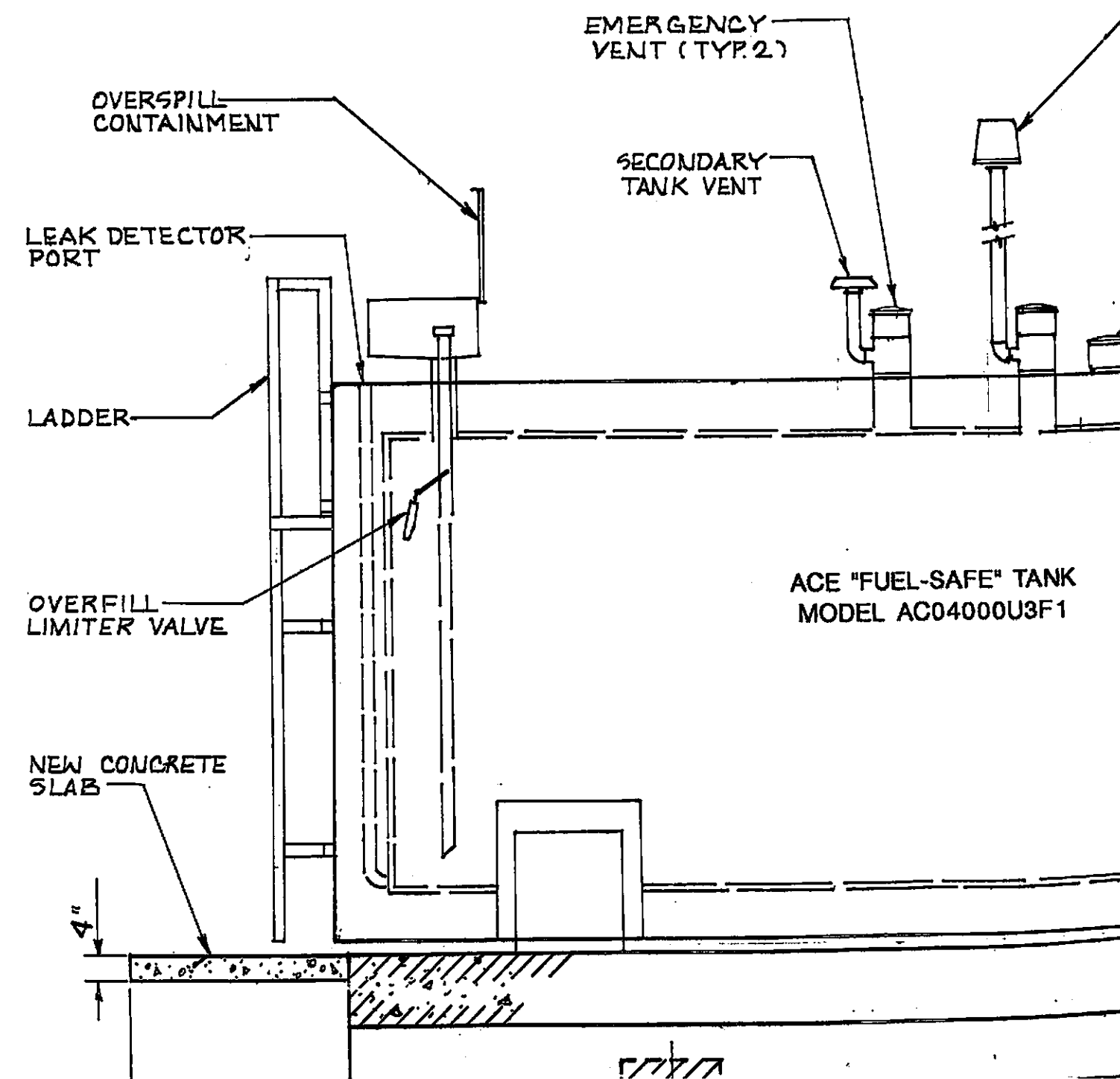
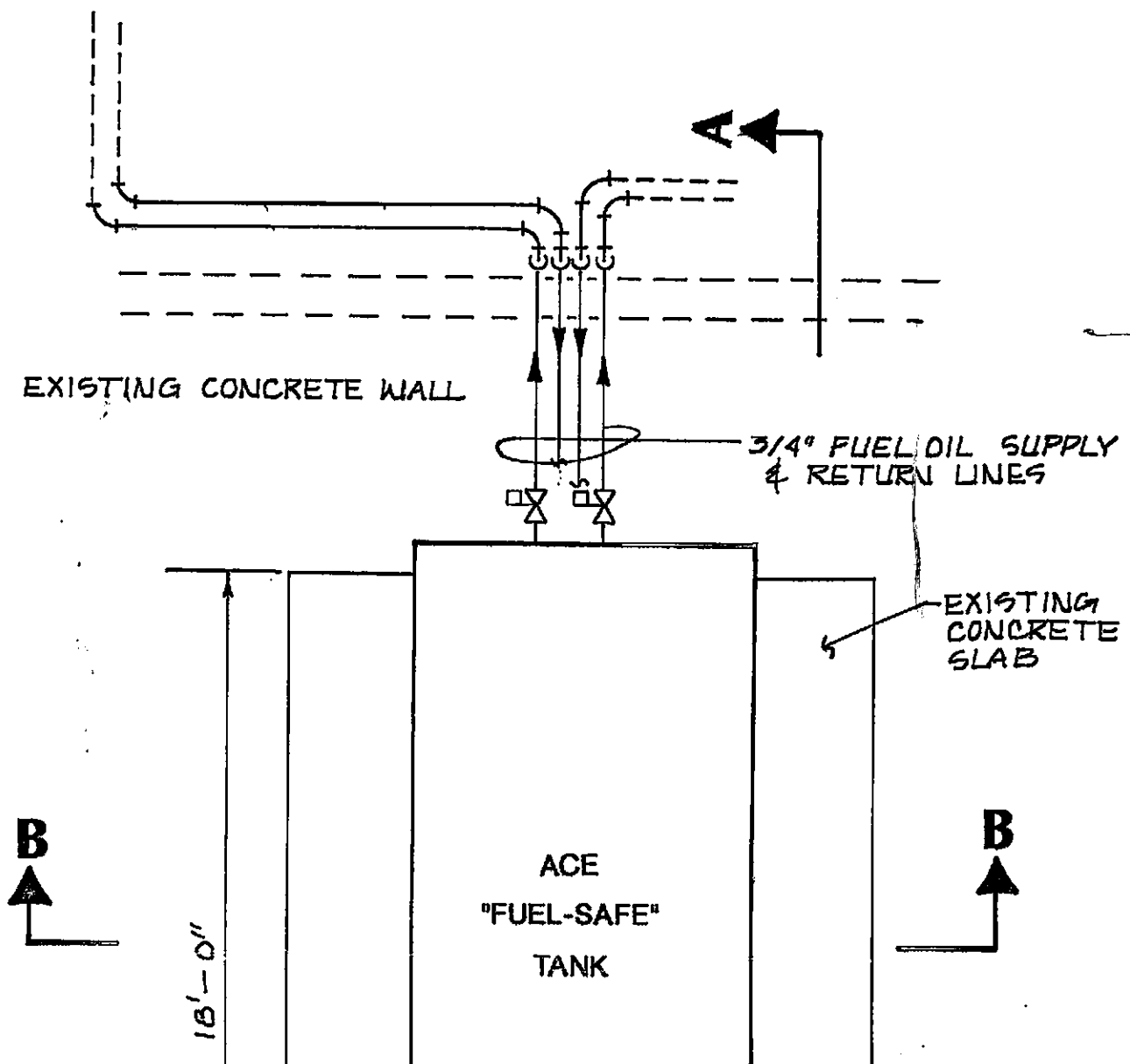


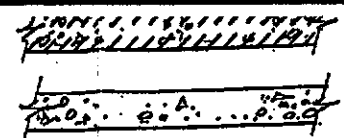
SCALE: AS SHOWN

ORO LOMA SANITARY DISTRICT
2600 GRANT AVE. SAN LORENZO,
ALAMEDA COUNTY, CA 94580



DATE AUGUST 1993
SCALE NONE
SHEET 2 OF 3
JOB NO. 45-264-02

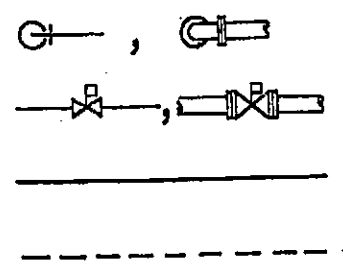




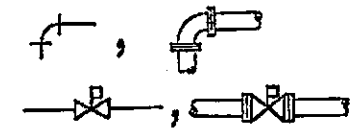
EXISTING CONCRETE
NEW CONCRETE

PIPING

PLAN

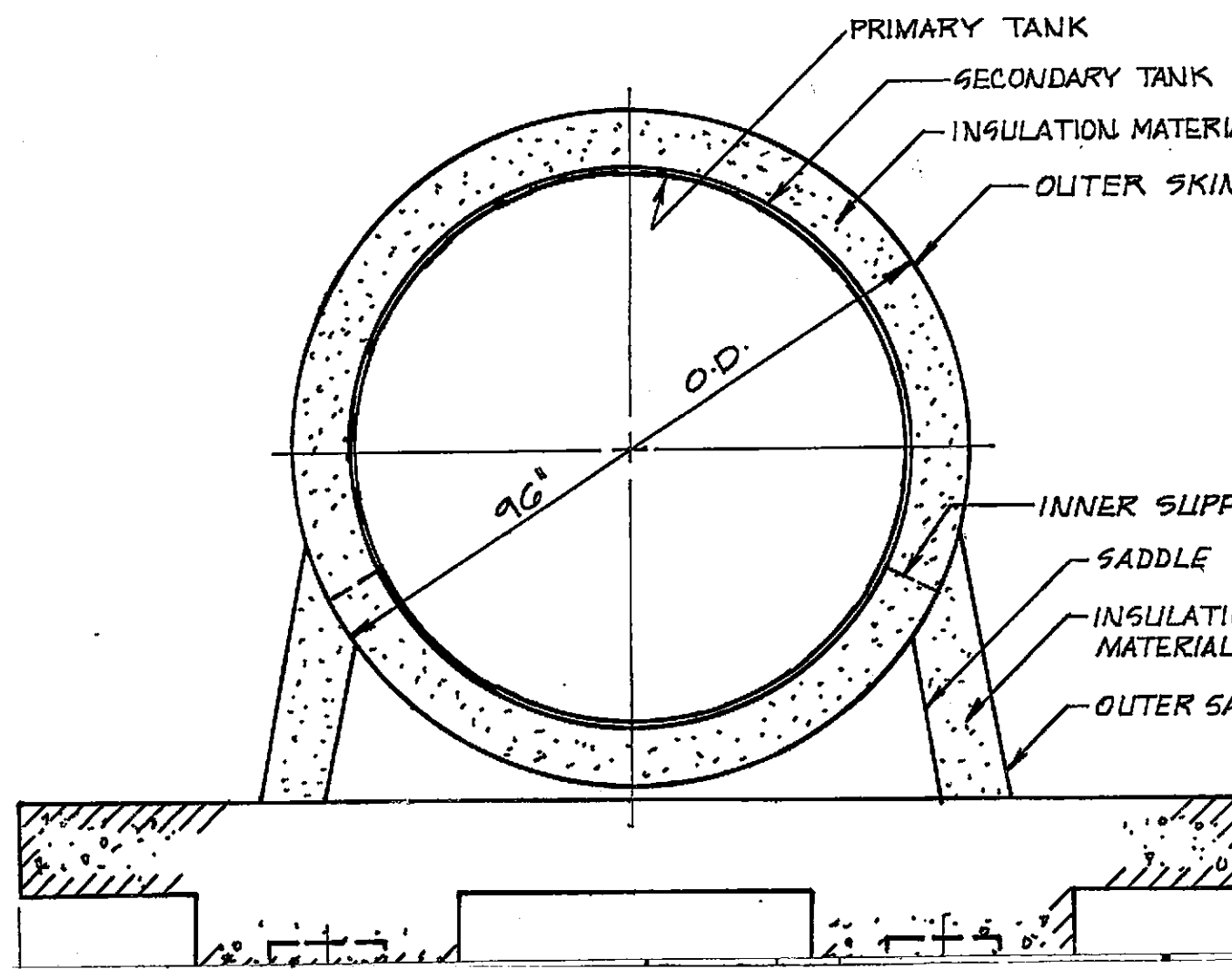
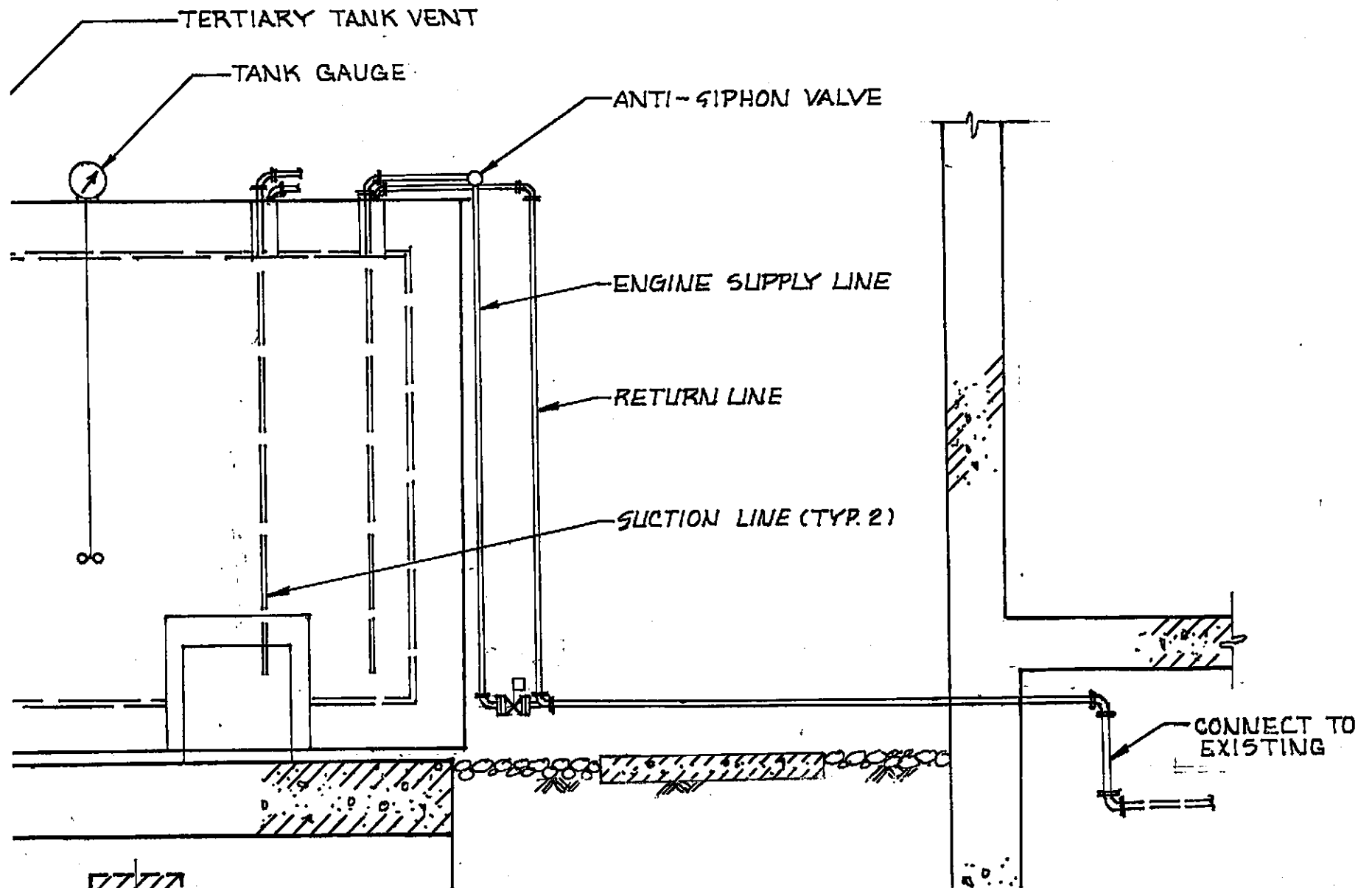


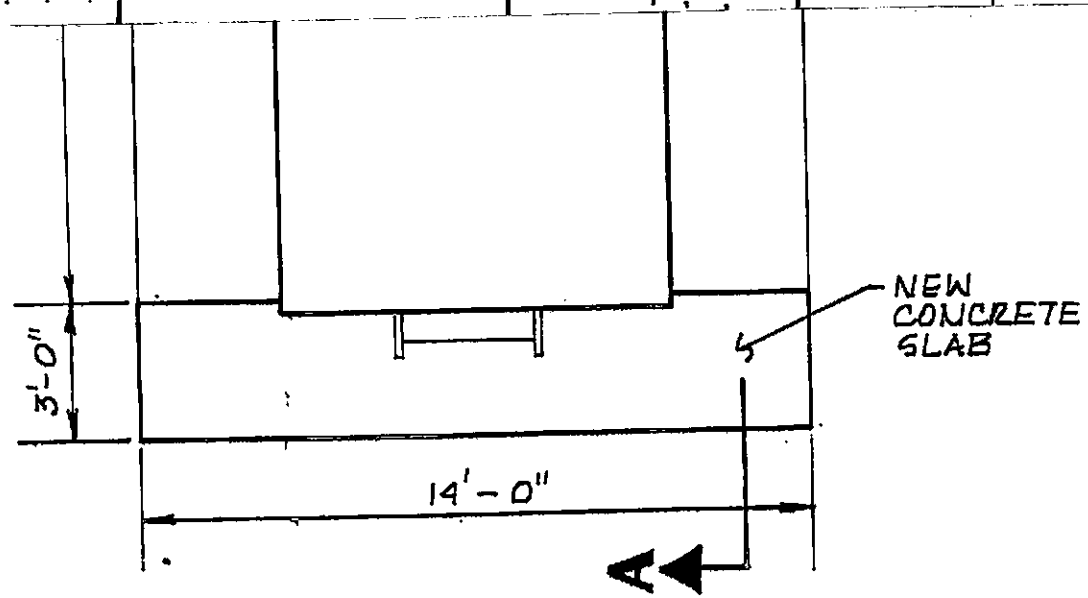
ELEVATION



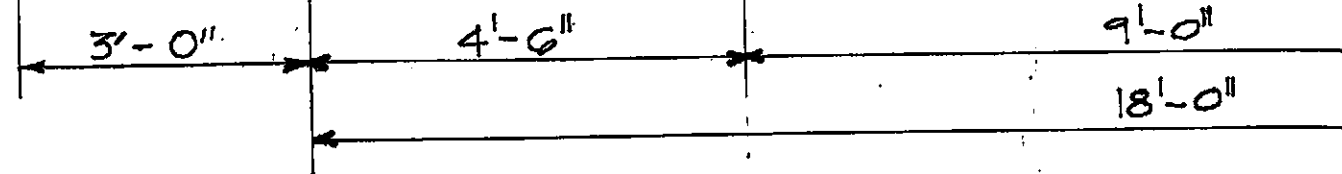
ELBOW-STRAIGHT
FUSIBLE VALVE
NEW PIPING
EXISTING PIPING

— FLAME ARRESTED
PRIMARY TANK VENT





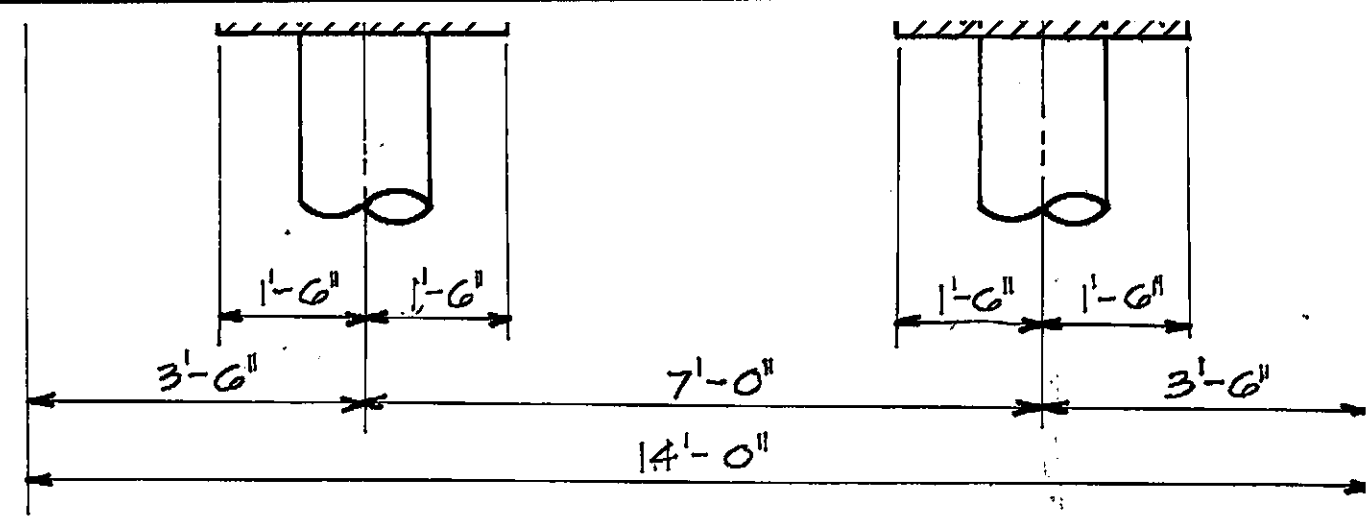
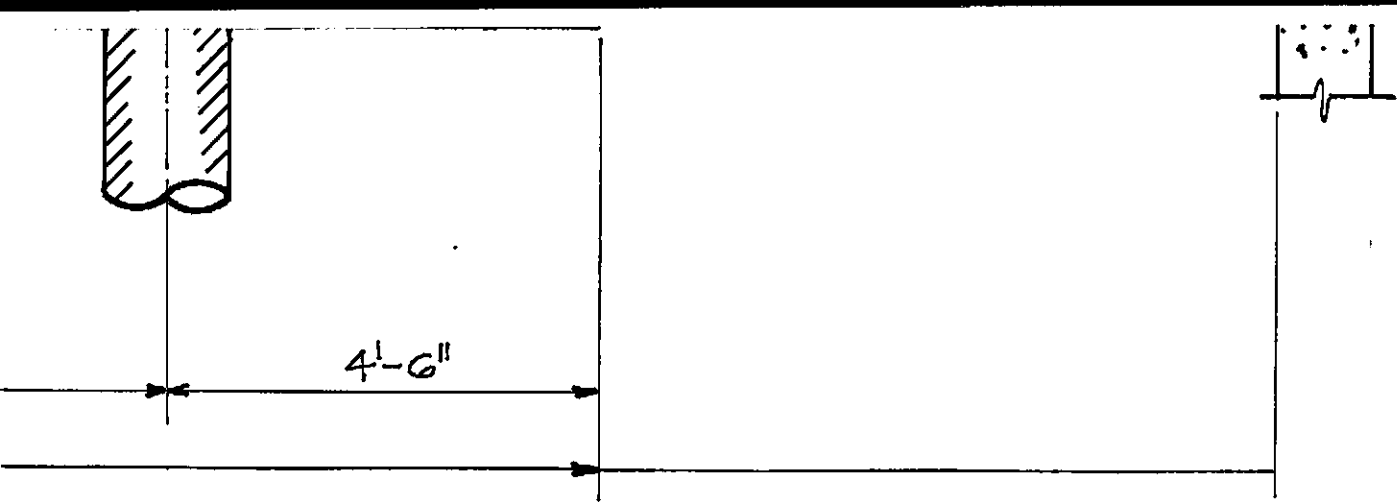
PLAN
SCALE: 1/4" = 1'-0"



SECTION A-A
SCALE: 1/2" = 1'-0"

REV. NO.	DATE	DESCRIPTION	REMARKS	REVISED BY

DI
NEW TANK



SECTION B-B
SCALE: 1/2" = 1'-0"

FUEL REMEDIATION
INSTALLATION PLAN

DESIGNED BY _____
DRAWN BY MC, KW
CHECKED BY DH
SUBMITTED BY MC

ORO LOMA SANITARY DISTRICT
2600 GRANT AVE. SAN LORENZO,
ALAMEDA COUNTY, CA 94580



DATE AUGUST 199
SCALE AS SHOWN
SHEET 3 OF 3
JOB NO. 45-264