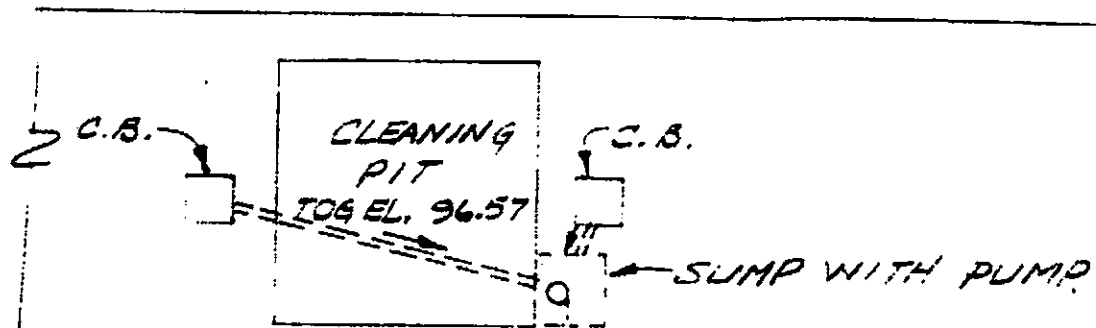
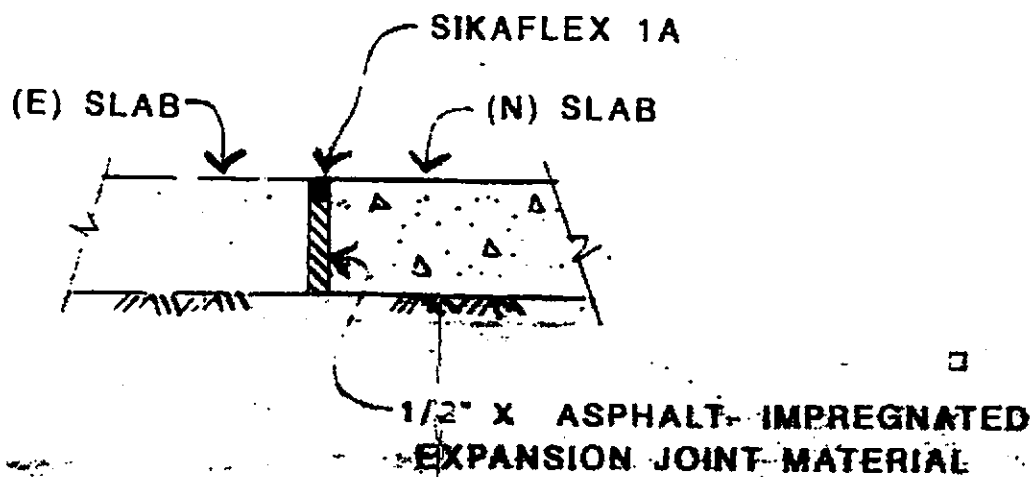
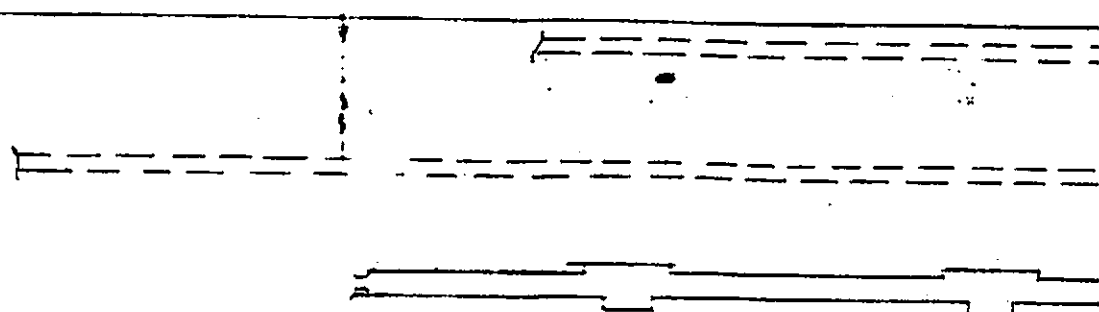


EL DDDR
h.E



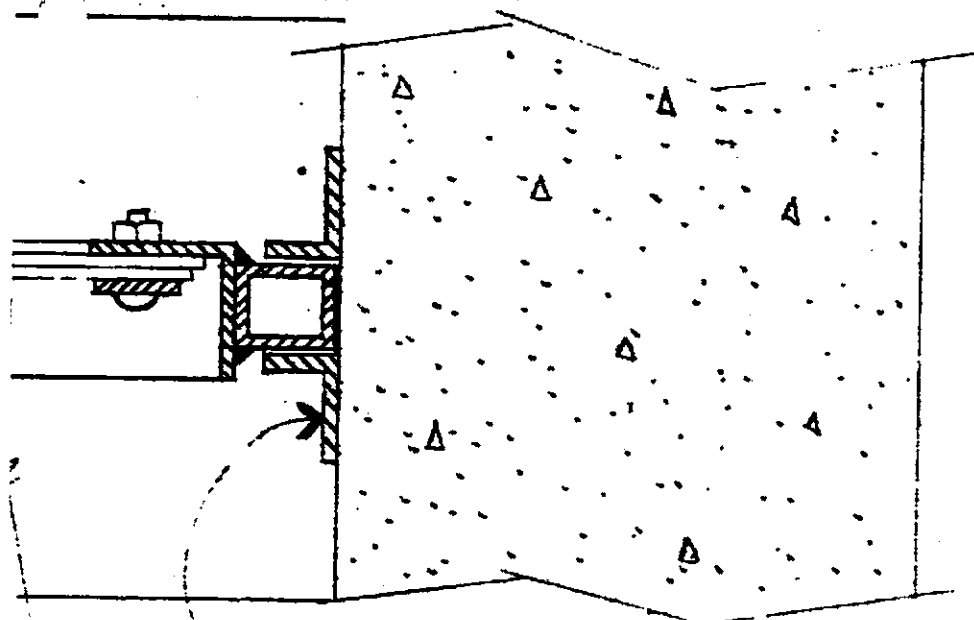
DOOR SUPPORT
BEAM



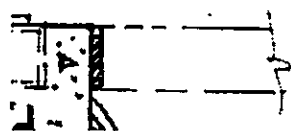
TYP. NEW/OLD CONC. JOINT

WIRE MESH SCREEN

WIRE MESH SCREEN

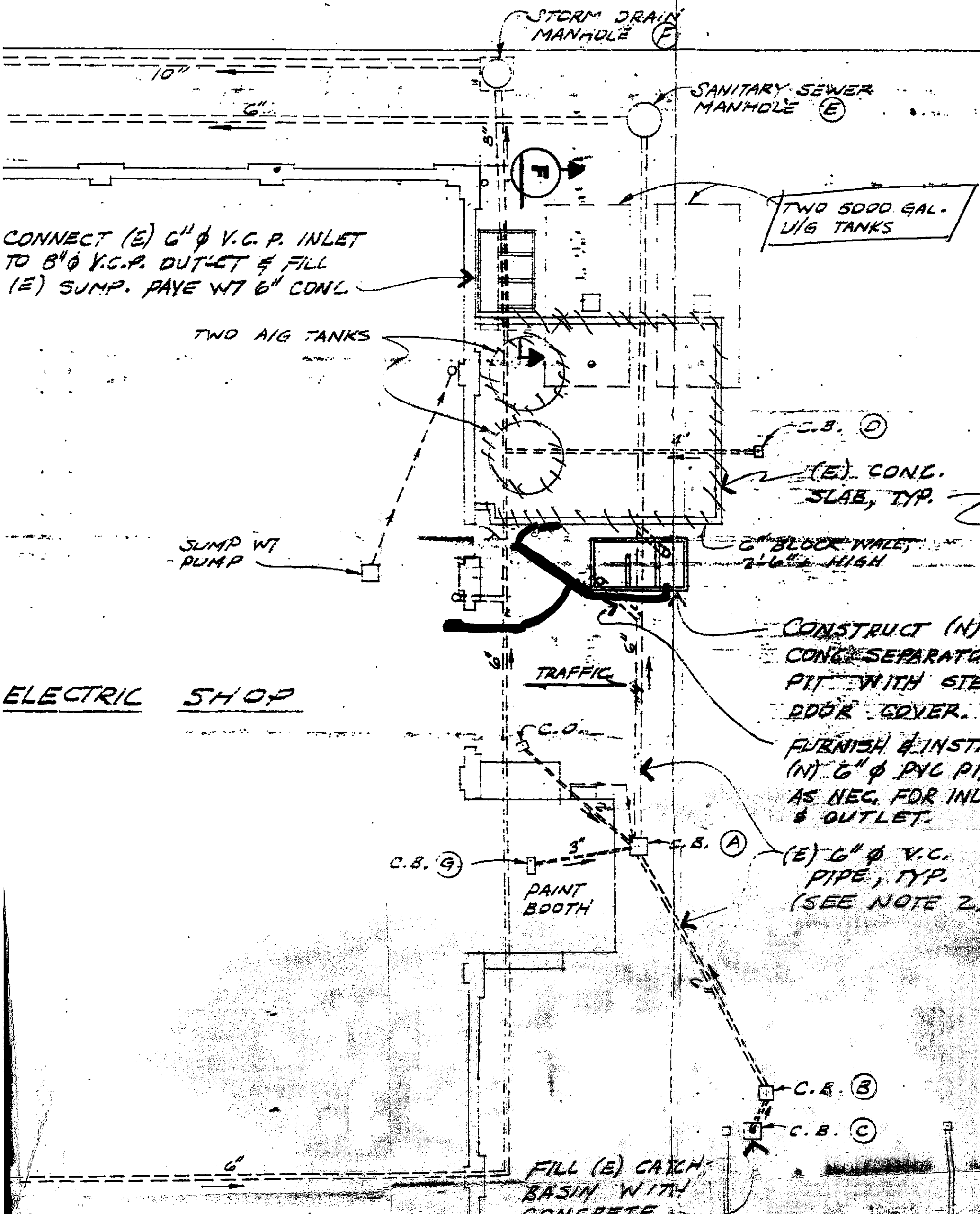


L 1" x 3/4" BOLTED
TO WALL, BOTH SIDES
OF TS GUIDE.



SECTION F

1/2" = 1'-0"



CONNECT (E) 6" ϕ V.C.P. INLET
 TO 8" ϕ V.C.P. OUTLET & FILL
 (E) SUMP. PAVE W/ 6" CONCL

TWO 5000 GAL.
 U/G TANKS

TWO AIG TANKS

SUMP WT
 PUMP

ELECTRIC SHOP

S.B. (D)
 (E) CONG.
 SLAB, TYP.

6" BLOCK WALL,
 2'-6" HIGH

CONSTRUCT (N)
 CONG SEPARATOR
 PIT WITH STEEL
 DOOR COVER.

FURNISH & INSTA
 (N) 6" ϕ PVC PIPE
 AS NEC. FOR INLE
 & OUTLET.

(E) 6" ϕ V.C.
 PIPE, TYP.
 (SEE NOTE 2)

C.B. (G)

PAINT
 BOOTH

S.B. (A)

C.B. (B)

C.B. (C)

FILL (E) CATCH
 BASIN WITH
 CONCRETE.

SEWER TO PROVIDE
LEAK FREE CONNECTIONS.

(F)

.97.92
.97.25 9/17/21

SEWERY SEWER
MANHOLE (E)

TWO 5000 GAL.
U/G TANKS

45th STREET

NOTES

1. NEW PIT IS IN HIGH FORKLIFT TRAFFIC AREA. CONTRACTOR MUST MAINTAIN ACCESS TO ELECTRIC SHOP AT ALL TIMES.
2. (E) DRAINAGE SYSTEM MUST REMAIN IN SERVICE AT ALL TIMES. CONTRACTOR SHALL PROVIDE TEMPORARY DRAINAGE SYSTEM AS NECESSARY.
3. NEW GALV. BEAM SHALL BE CAST IN PLACE.
4. NEW DOORS SHALL BE TYPE B-D, RATED FOR H20 LOADS, BY BABCOCK-DAVIS HATCHWAYS, INC.
5. ALL FRAMING COMPONENTS OF REMOVABLE SCREEN SHALL BE HOT DIP GALVANIZED AFTER FABRICATION.

C.B. (D)
(E) CONC.
SLAB, TYP.
6" BLOCK WALL,
2'-6" HIGH

CONSTRUCT (N)
CONC. SEPARATOR
PIT WITH STEEL
DOOR COVER.

FURNISH & INSTALL
(N) 6" Ø PVC PIPE
AS NEC. FOR INLET
& OUTLET.

(A) (E) 6" Ø V.C.
PIPE, TYP.
(SEE NOTE 2).

C.B. (B)

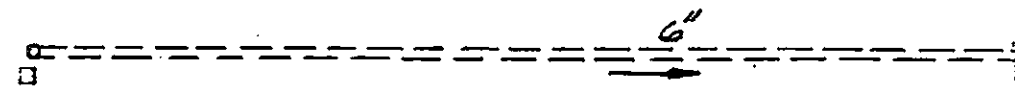
C.B. (C)

2
 L 1" x 3/4" BOLTED
 TO WALL, BOTH SIDES
 OF TS GUIDE.

C

CATCH BASIN INVERTS

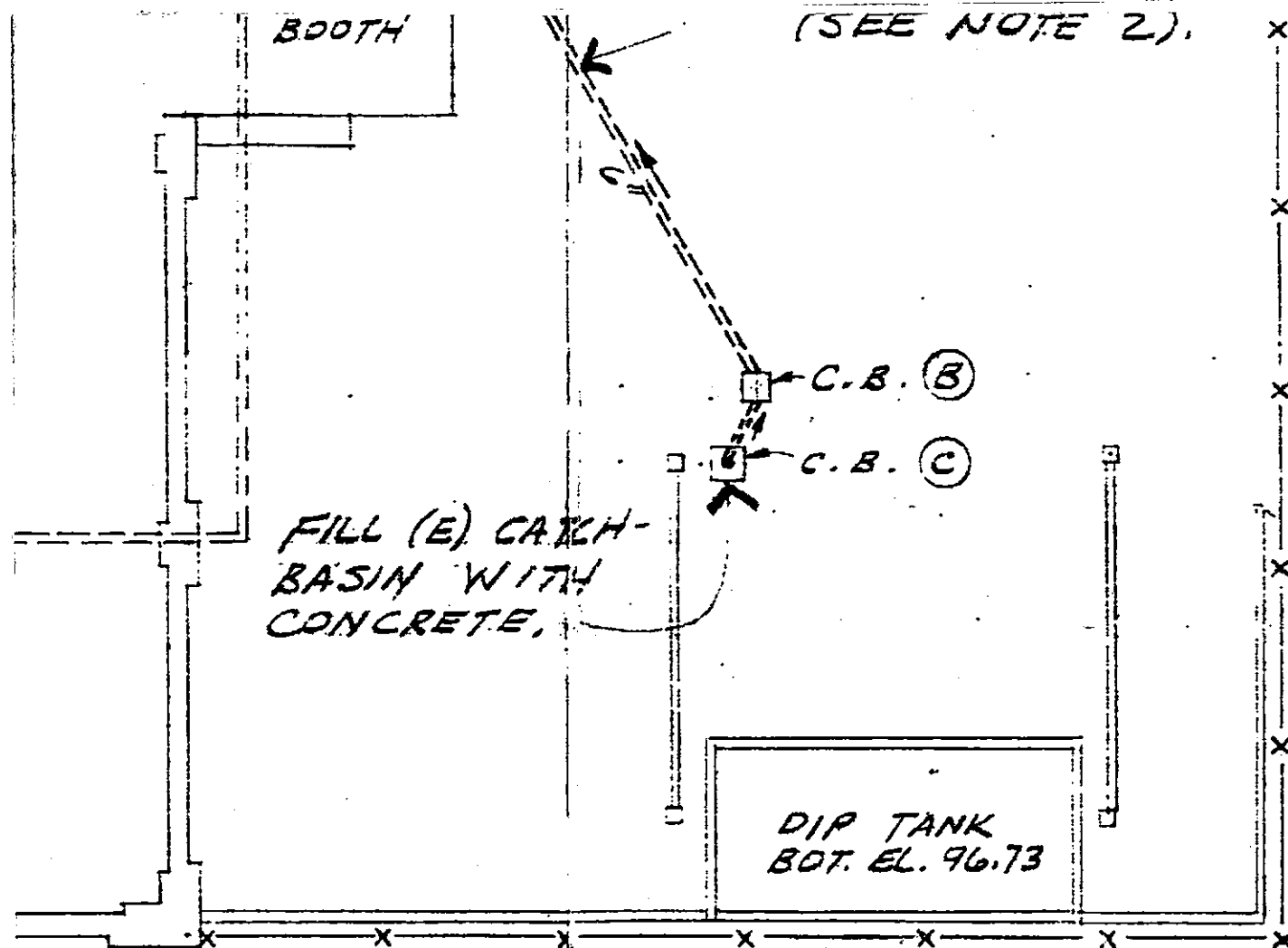
CATCH BASIN	T.O/S.	INV. INLET	INV. OUTLET	INV. BOTTOM
CB-A	100.61	98.44	98.44	UNKNOWN
CB-B	100.41	-	98.66	98.66
CB-C	100.42	-	99.31	99.31
CB-D	100.50	-	98.8	97.79
CB-E	-	-	-	-
SANITARY SEWER MH-E	100.49	97.69	97.57	98.01
STORM SEWER MH-F	100.48	96.45	95.51	95.51



NO.	DATE	DESCRIPTION	GM/SPEC	DWN	CHKD	SUPV	APVD BY	NO.	DATE	DESCRIPTION	GM/SPEC	DWN	CHKD	SUPV	APVD BY	NO.	DATE	DESCRIPTION

AS-BUILT DW
 ISSUED FOR
 1 5-29-9
 01

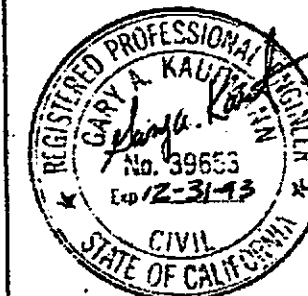
DES



PLAN

1/8" = 1'-0"

As-Built
3/28/91 G. PFORE



OIL WATER SEPARATOR PIT, ELECTRICAL SHOP 'B'

APPROVED BY	GM
	SUPV. JNC
	DSGN.
	DWN. GSP
	CHKD. CH
	O.K.
	DATE 10-2-90

OIL RETENTION & SEPARATION PIT

EMERYVILLE WAREHOUSE

ENGINEERING & CONSTRUCTION SERVICES

MICROFILM
BILL OF MATL
DWG LIST
SUPSDS
SUPSD BY
SHEET NO. 2 OF 4 SHEETS
000170E REV. 2

G. COMPLETED
BIDS

GP JOB JNC
GSP CH JNC

4
2