

# Facsimile Cover Sheet

To: Susan Deuce  
 Company: County DTS  
 Phone:  
 Fax: 510-569-4757

From: Michelle Elmore  
 Company: PG&E  
 Phone: 510-649-3310  
 Fax:

Date: 1/13/94

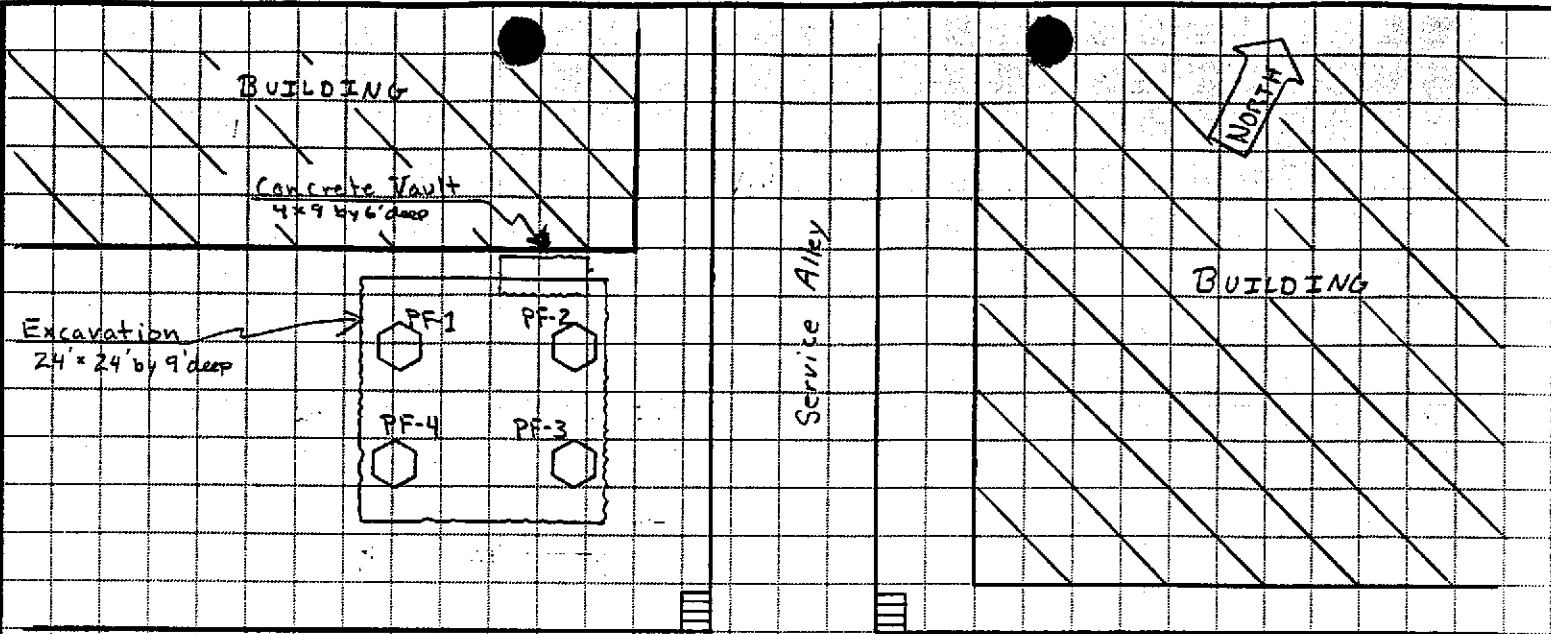
Pages including this cover page:

Comments: Please call me to comment on your review. Thank you

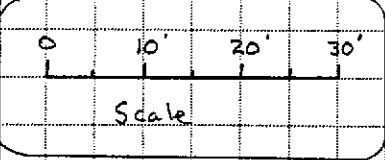
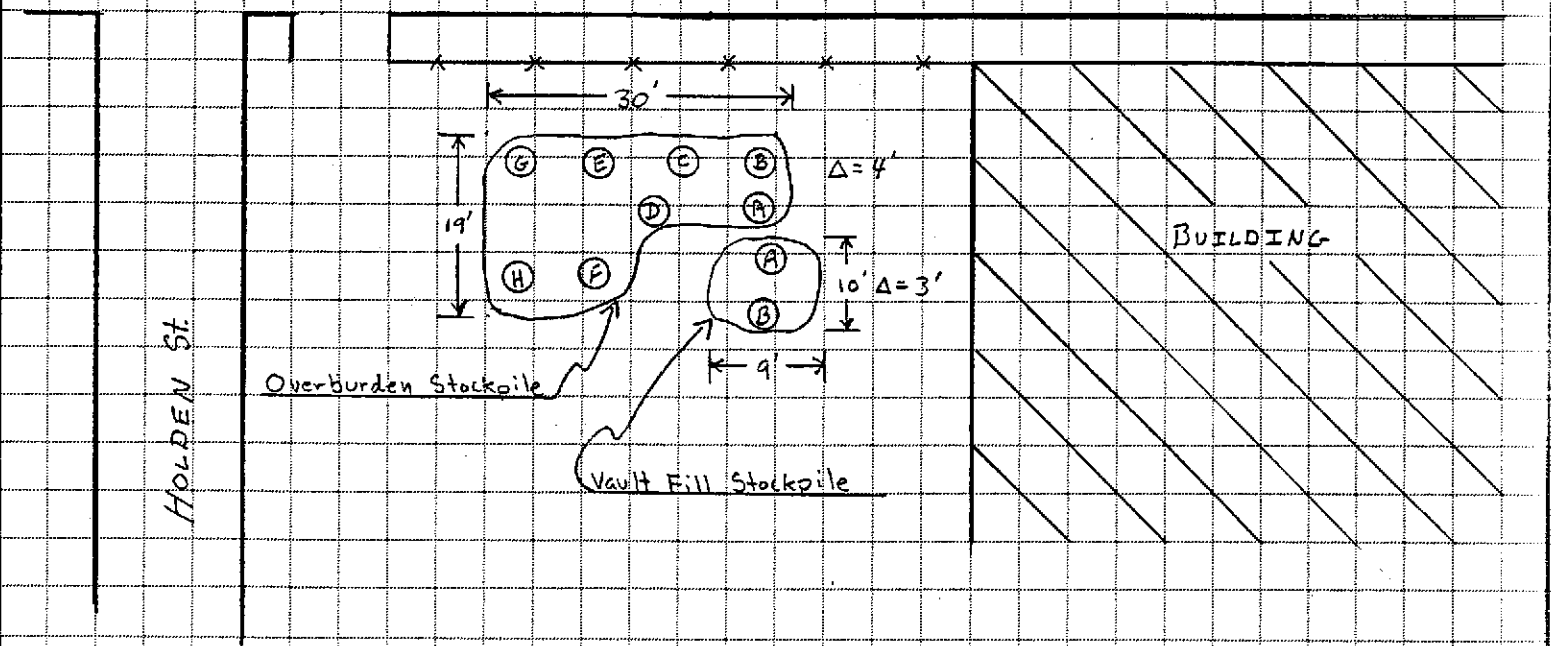
1/13/94

Talked to Michelle:  
 need to conduct subsurface investigation (vertical & lateral extent)  
 - will wait for complete UGOT report on UGOT removal  
 - had submitted the hearing. full tank removal in my response to UGOT.  
 - will address the hearing. full tank removal in my response to UGOT.

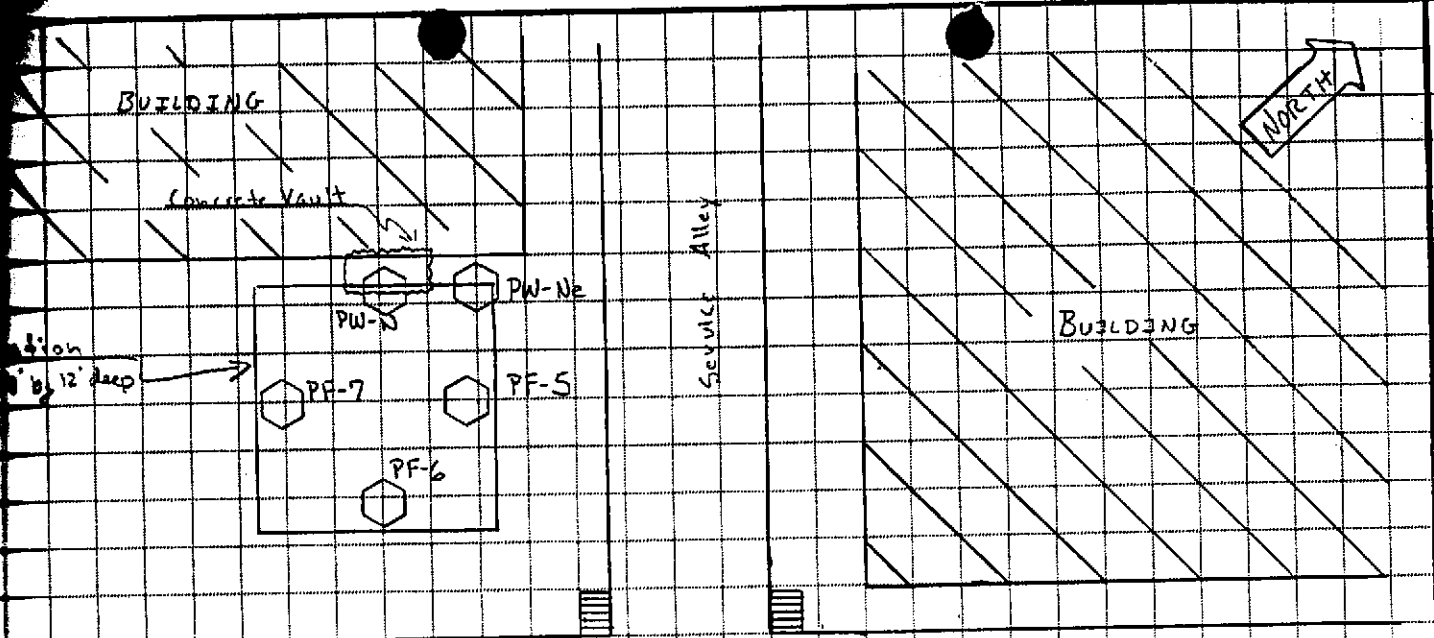




45th STREET

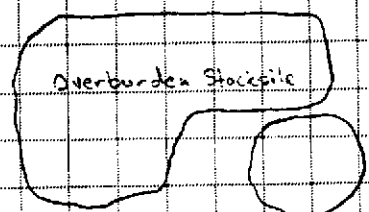


<b>Detailed Site Plan</b> <b>Tank Removal Sample Locations</b>	
<b>PG&amp;E Emeryville</b> <b>4525 Hollis Street, Emeryville, CA.</b>	
<b>Scale: 1" = 20 feet</b>	<b>Date: 12-22-93</b>
<b>RAMCON Job #649001</b>	<b>Plate 2</b>

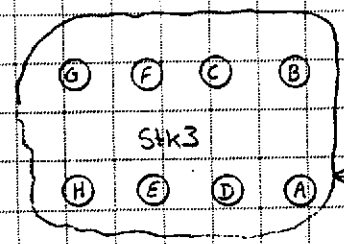


45th STREET

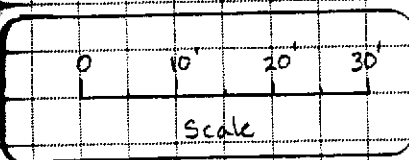
HOLDEN STREET



Wash Fill Stockpile

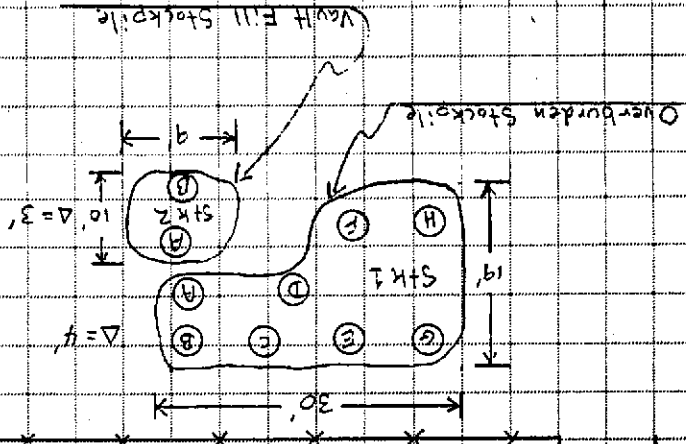
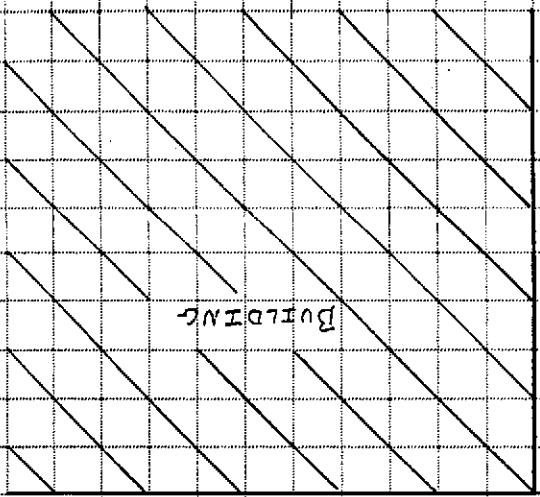
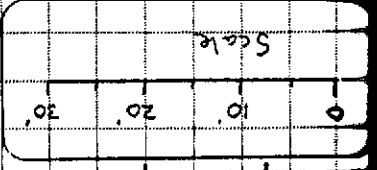


Over Excavation Stockpile



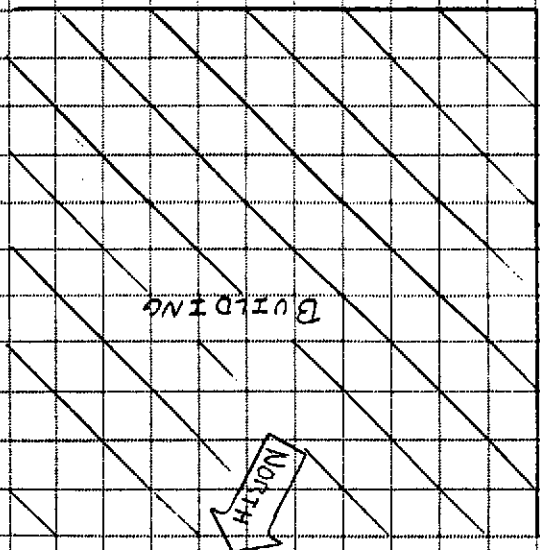
<b>Detailed Site Plan</b> <b>Over Excavation Soil Sample Locations</b>	
<b>PG&amp;E Emeryville</b> <b>4525 Hollis Street, Emeryville, CA.</b>	
<b>Scale: 1" = 20 feet</b>	<b>Date: 12-29-93</b>
<b>RAMCON Job #649001</b>	<b>Plate 3</b>

Detailed Site Plan  
 Tank Removal Sample Locations  
 PG&E Emeryville  
 4525 Hollis Street, Emeryville, CA.  
 Scale: 1" = 20 feet  
 Date: 12-22-93  
 RAMCON Job #649001  
 Plate 2

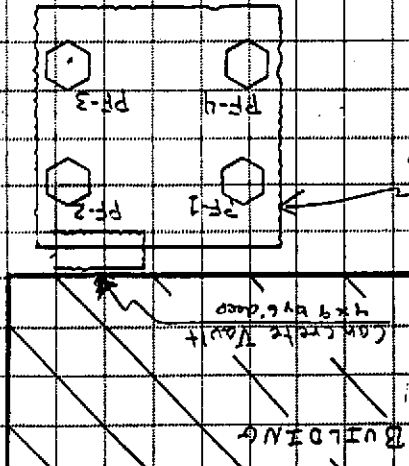


HOLDEN ST

45th STREET



Service Alley



NORTH



Sample Log 8211

8211-7

Sample: STK2-A-B

From : Project # 649001 (PG&E)

Sampled : 12/22/93

Dilution : 1:1

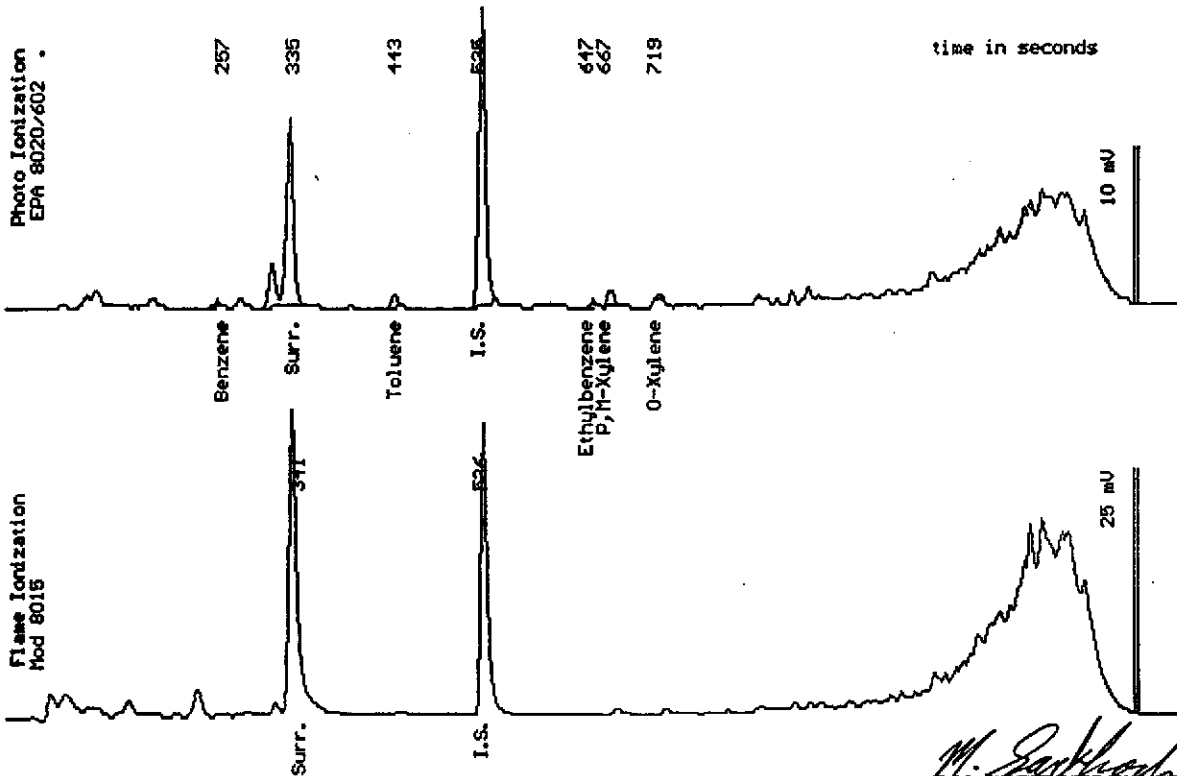
Matrix : Soil

QC Batch : 6075b

Measured Value mg/kg

Parameter	(MRL) mg/kg	Measured Value mg/kg
Benzene	(.0050)	<.0050
Toluene	(.0050)	.0068
Ethylbenzene	(.0050)	<.0050
Total Xylenes	(.0050)	.012
TPH as Gasoline	(.50)	1.9 *
Surrogate Recovery		101 %

\* Product is not typical gasoline.



*M. Sarkhosh*

Mitra Sarkhosh  
Senior Chemist

Date Analyzed: 12-24-93  
Column : 0.53mm ID X 30m DB5 (J&W Scientific)



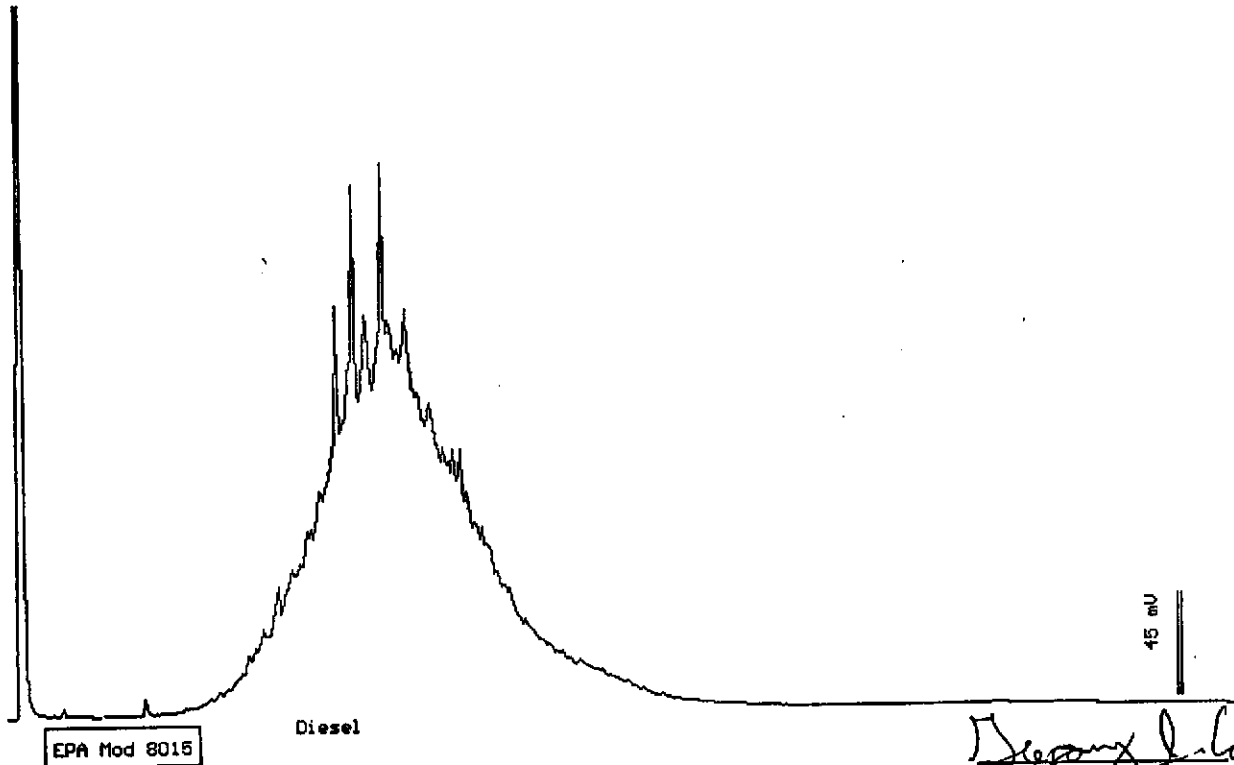
Sample Log 8211  
8211-6

Sample: STK1-E-H

From : Project # 649001 (PG&E)  
Sampled : 12/22/93  
Extracted: 12/23/93  
Dilution : 1:1  
Matrix : Soil

QC Batch : DS931210  
Run Log : 8142A

Parameter	(MDL) mg/kg	Measured Value mg/kg
TPH as Diesel	(10)	920
TPH as Motor Oil	(10)	<10



Date: 12-24-93 Time: 00:07:47  
Column : 0.53mm ID X 15m DB1 (J&W Scientific)

*Stewart Podolsky* / For  
Stewart Podolsky  
Senior Chemist



Sample Log 8211

8211-7

Sample: STK2-A-B

From : Project # 649001 (PG&E)

Sampled : 12/22/93

Extracted: 12/23/93

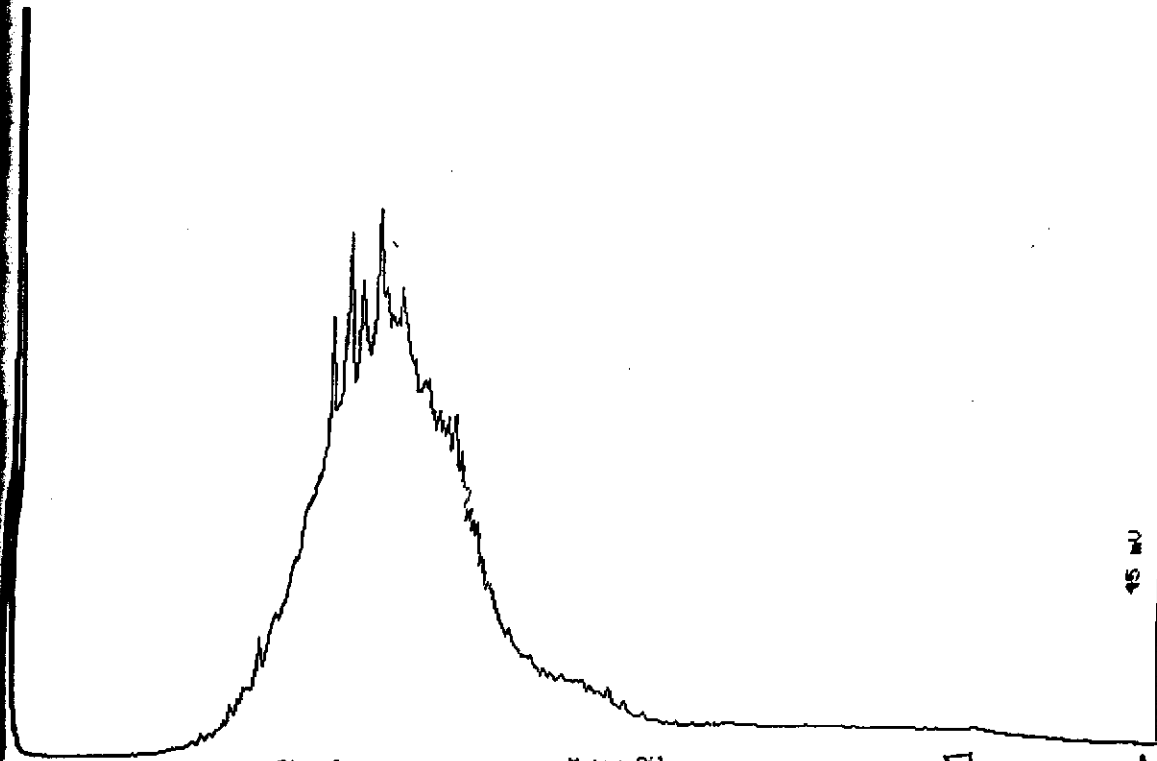
Dilution : 1:1

Matrix : Soil

QC Batch : DS931210

Run Log : 8142A

Parameter	(MDL) mg/kg	Measured Value mg/kg
TPH as Diesel	(10)	560
TPH as Motor Oil	(10)	20



EPA Mod 8015

Diesel

Motor Oil

*Stewart J. Podolsky* / For

Stewart Podolsky  
Senior Chemist

Date: 12-24-93 Time: 01:44:21

Column : 0.53mm ID X 15m DB1 (J&W Scientific)



TABLE 4 ANALYTICAL SUMMARY PG&E Emeryville 4525 Hollis Street, Emeryville, CA.					
Over Ex Former PCB Underground Storage Tank Pit & Collect Samples (3 pit floor samples, 2 pit wall samples, & 2 composite stockpile samples), 12-29-93 WEST Sample Log #8252 RAMCON Job #649001					
Sample #	Sample Location	B/T/E/X	TPH as Gasoline	TPH as Diesel	TPH as Motor Oil
PF-5	North East Pit Floor @ 12 ft	ND/ND/ND/ND	ND	36	ND
PF-6	South Pit Floor @ 12 ft	ND/ND/ND/ND	ND	ND	ND
PF-7	South West Pit Floor @ 12 ft	ND/ND/ND/ND	ND	41	ND
PW-n	North Pit Wall @ 12 ft	ND/ND/ND/ND	ND	300	ND
PW-ne	North East Pit Wall @ 12 ft	ND/ND/ND/ND	ND	210	ND
C3(ABCD)	Over Ex Stockpile	ND/ND/ND/ND	ND	120	ND
C3(EFGH)	Over Ex Stockpile	ND/ND/ND/ND	ND	130	ND
Reporting Limits		(.005 mg/kg)	(.50 mg/kg)	(10 mg/kg)	

TOG

ND

ND

80 ppm

310 ppm

90 ppm

Note: Please refer to Tables 4 and 5 for a summary of the following analyses performed on samples:

Total Oil & Grease  
EPA 8010 Volatile Halocarbons  
EPA 8270 Semi-Volatile Organics  
EPA 8080 PCB's  
TTLIC Metals Cd, Cr, Pb, Zn, Ni.

**TABLE 5 ANALYTICAL SUMMARY**  
**PG&E Emeryville**  
**4525 Hollis Street, Emeryville, CA.**

**Over Ex Former PCB Underground Storage Tank Pit**  
**Collect 3 pit floor samples & 2 pit wall samples, 12-29-93**  
**WEST Sample Log #8252 RAMCON Job #649001**

ANALYSES	Sample Number				
	PF-5	PF-6	PF-7	PW-n	PW-ne
Benzene	<.005 mg/kg	<.005 mg/kg	<.005 mg/kg	<.005 mg/kg	<.005 mg/kg
Toluene	" "	" "	" "	" "	" "
Ethylbenzene	" "	" "	" "	" "	" "
Xylene	" "	" "	" "	" "	" "
TPH as Gasoline	<.50 mg/kg	<.50 mg/kg	<.50 mg/kg	<.50 mg/kg	<.50 mg/kg
TPH as Diesel	<b>36 mg/kg</b>	<10 mg/kg	<b>41 mg/kg</b>	<b>300 mg/kg</b>	<b>210 mg/kg</b>
TPH as Motor Oil	<10 mg/kg	<10 mg/kg	<10 mg/kg	<10 mg/kg	<10 mg/kg
Oil & Grease	<50 mg/kg	<50 mg/kg	<b>80 mg/kg</b>	<b>316 mg/kg</b>	<b>90 mg/kg</b>
(EPA 8270)					
(EPA 8010)	ND	ND	ND	ND	ND
(EPA 8080)	ND	ND	ND	.036 mg/kg PCB 1260	.036 mg/kg PCB 1260
<u>Five Metals:</u>	pending	pending	pending	pending	pending
Cadmium	1.8 mg/kg	2.2 mg/kg	1.7 mg/kg		2.0 mg/kg
Chromium	51 mg/kg	44 mg/kg	41 mg/kg		51 mg/kg
Lead	<10 mg/kg	47 mg/kg	<10 mg/kg		<10 mg/kg
Nickel	73 mg/kg	110 mg/kg	61 mg/kg		61 mg/kg
Zinc	46 mg/kg	57 mg/kg	40 mg/kg		43 mg/kg

TABLE 6 ANALYTICAL SUMMARY		
PG&E Emeryville		
4525 Hollis Street, Emeryville, CA.		
Over Ex Former PCB Underground Storage Tank Pit		
Collect 2 composite stockpile samples, 12-29-93		
WEST Sample Log #8252		
RAMCON Job #649001		
ANALYSES	Sample Number	
	C3(ABCD)	C3(EFGH)
Benzene	<.005 mg/kg	<.005 mg/kg
Toluene	" "	" "
Ethylbenzene	" "	" "
Xylene	" "	" "
TPH as Gasoline	<.50 mg/kg	<.50 mg/kg
TPH as Diesel	120 mg/kg	130 mg/kg
TPH as Motor Oil	<10 mg/kg	<10 mg/kg
Oil & Grease	67 mg/kg	320 mg/kg
(EPA 8270)		
(EPA 8010)	ND	ND
(EPA 8080)	1.2 mg/kg PCB 1260	.46 mg/kg PCB 1260
Five Metals:	pending	pending
Cadmium	1.9 mg/kg	2.1 mg/kg
Chromium	51 mg/kg	89 mg/kg
Lead	37 mg/kg	46 mg/kg
Nickel	220 mg/kg	67 mg/kg
Zinc	41 mg/kg	46 mg/kg

file:wp51\docs\jaff\649\data