

# P & D ENVIRONMENTAL

A Division of Paul H. King, Inc.

4020 Panama Court

Oakland, CA 94611

(510) 658-6916

970 3674

ENVIRONMENTAL  
PROTECTION

97 OCT 16, 1997  
Work Plan 0067.W3

97 OCT 24 PM 3:47

Ms. Eva Chu  
Alameda County Department of Environmental Health  
1131 Harbor Bay Parkway  
Alameda, CA 94502

SUBJECT: WORK PLAN ADDENDUM  
Former Service Station  
5330 Foothill Blvd.  
Oakland, CA

Dear Ms. Chu:

This work plan addendum augments P&D's Work Plan 0067.W2 dated October 10, 1996. Work plan 0067.W2 was approved in a letter from Ms. Eva Chu of the Alameda County Department of Environmental Health (ACDEH) in a letter dated October 18, 1996.

The scope of work set forth in this work plan addendum is based upon telephone conversations between Ms. Eva Chu of the ACDEH and Paul King of P&D Environmental (P&D) on October 3, 1997 and October 8, 1997. The additional work consists of the collection of six soil gas samples and two duplicate soil gas samples at various locations at the site using Summa canisters. The sample collection depth will not exceed three feet below the ground surface. The soil gas samples and duplicates will be analyzed for TPH-G, BTEX and MTBE. A Site Location Map is attached as Figure 1, and a Site Plan showing the proposed soil gas sample collection locations is attached as Figure 2.

## SCOPE OF WORK

Procedures for the proposed scope of work are provided below.

### Soil Gas Sample Collection and Analysis

The soil gas samples will be collected from boreholes which extend to a depth of three feet below the ground surface. The samples will be collected from boreholes which have been driven to the three foot depth using Geoprobe Technology. A soil sample will be collected from the bottom of each borehole to ensure that the boreholes extend below fill material into native material. A tube for soil gas sample collection will be placed into the borehole and the top of the borehole will be sealed with hydrated bentonite to prevent the entrance of air from the ground surface into the borehole. The two duplicate soil gas sample collection locations will be adjacent to two of the six soil gas sample boreholes.

The soil gas in each borehole will be evacuated using a vacuum pump for five minutes prior to sample collection. Following the borehole gas evacuation, a soil gas sample will be collected from the borehole using a Summa canister. The soil gas samples and duplicates from the boreholes will be analyzed for TPH-G, BTEX and MTBE within 14 days of sample collection.

*Is this length of time necessary. Or should the volume w/in the tube ~~be~~ be evacuated only.*

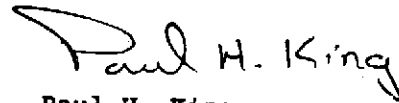
Work Plan 0067.W3  
October 16, 1997

2

Should you have any questions or comments, please do not hesitate to contact us at (510) 658-6916.

Sincerely,

P&D Environmental



Paul H. King  
Hydrogeologist



Don R. Braun  
Certified Engineering Geologist  
Registration No.: 1310  
Expiration Date: 6/30/98

Attachments:      Figure 1, Site Location Map  
                         Figure 2, Site Plan

PHK  
0067.W3

# P & D ENVIRONMENTAL

A Division of Paul H. King, Inc.  
4020 Panama Court  
Oakland, CA 94611  
(510) 658-6916



Base Map From  
U.S. Geological Survey  
Oakland East, Calif.  
7.5 Minute Quadrangle  
Photorevised 1980

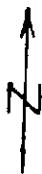


Figure 1  
SITE LOCATION MAP  
Former Service Station  
5330 Foothill Blvd.  
Oakland, California

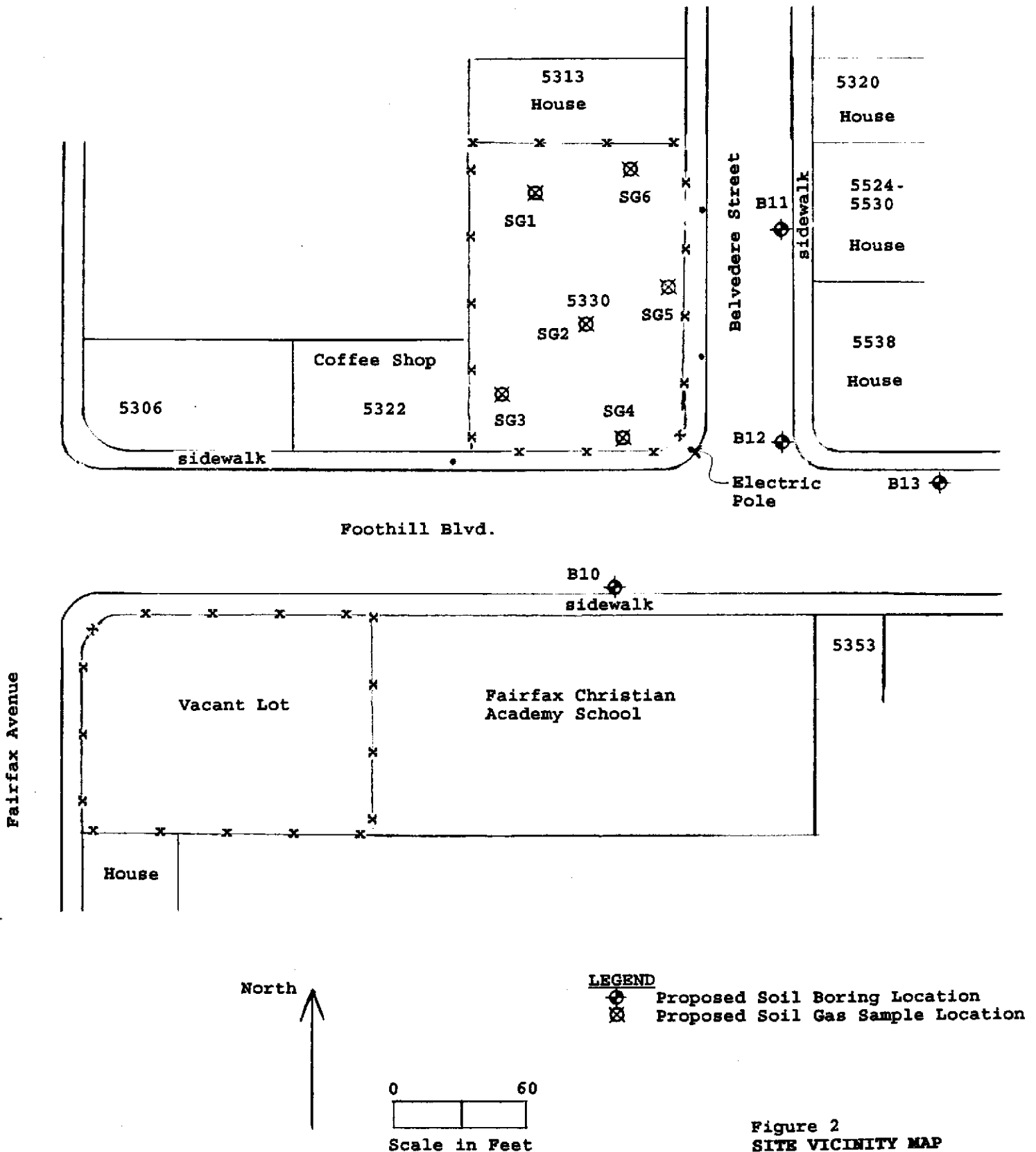
# P & D ENVIRONMENTAL

A Division of Paul H. King, Inc.

4020 Panama Court

Oakland, CA 94611

(510) 658-6916



Base Map From  
P&D Environmental  
July, 1996

Figure 2  
SITE VICINITY MAP  
Former Service Station  
5330 Foothill Blvd.  
Oakland, California