

ENVIRONMENTAL PROTECTION

00 APR 27 AM 9:00



**Chevron**

*STIP 656*

Chevron U.S.A. Products Company  
6001 Bollinger Canyon Rd. Elgin, IL  
P. O. Box 6004  
San Ramon, CA 94583-0804

Site Assessment and Remediation Group  
Phone (510) 842-2530  
Fax (510) 842-2570

Date: 4-24-00  
To: Distribution  
Re: Groundwater Monitoring Report, 9-2960

*APPROVED  
REVIEW  
10/30/2000  
AL*

The enclosed groundwater monitoring report has been properly reviewed by a Chevron authorized representative. Agency guidelines have been followed. Blaine Tech Services is authorized to distribute the report directly to interested parties.

If you have any questions, please call me at (510) 342-3695.

Sincerely,

*Brett L. Hunter*

Brett Hunter  
Site Assessment and Remediation  
Project Manager

*WENTY G.W. Plus  
How some AB. tanks wells C) \$ 60  
SHH SHLN are. y 510 342 3695  
150031100 PPP  
in all cost  
Respectfully,*

**BLAINE**  
TECH SERVICES, INC.



1680 ROGERS AVENUE  
SAN JOSE, CA 95112-1105  
(408) 573-7771 FAX  
(408) 573-0555 PHONE  
CONTRACTOR'S LICENSE #746684  
www.blainetech.com

April 24, 2000

Brett Hunter  
Chevron U.S.A. Products Company  
P.O. Box 6004  
San Ramon, CA 94583-0904

656

### 1st Quarter 2000 Monitoring at 9-2960

First Quarter 2000 Groundwater Monitoring at  
Former Chevron Service Station Number 9-2960  
2416 Grove Way  
Castro Valley, CA

Monitoring Performed on February 1, 2000

---

### Groundwater Sampling Report 000201-C-2

This report covers the routine monitoring of groundwater wells at this Chevron facility. Blaine Tech Services, Inc.'s work at the site includes inspection, gauging, evacuation, purgewater containment, sample collection and sample handling in accordance with standard procedures that conform to Regional Water Quality Control Board requirements.

Routine field data collection includes depth to water, total well depth, thickness of any separate immiscible layer, water column volume, calculated volume of a three-case volume purge, elapsed evacuation time, total volume of water removed, and standard water parameter instrument readings. Sample material is collected, contained, stored, and transported to the laboratory in conformance with EPA standards. Purgewater is, likewise, collected and transported to McKittrick Waste Treatment Site for disposal.

Basic field information is presented alongside analytical values excerpted from the laboratory report in the cumulative table of **WELL DATA AND ANALYTICAL RESULTS**. The full analytical report for the most recent samples is located in the **Analytical Appendix**. The table also contains new groundwater elevation calculations taken from the computer plotted gradient map which is located in the **Professional Engineering Appendix**.

At a minimum, Blaine Tech Services, Inc. field personnel are certified upon completion of a forty-hour Hazardous Materials and Emergency Response training course per 29 CFR 1910.120. Field personnel are also enrolled in annual eight hour refresher courses.

Blaine Tech Services, Inc. conducts sampling and documentation assignments of this type as an independent third party. In order to avoid compromising the objectivity necessary for the proper and disinterested performance of this work, Blaine Tech Services, Inc. concentrates on objective data collection and does not participate in the interpretation of analytical results, the definition of geological or hydrological conditions, the formulation of recommendations, or the marketing of remedial systems.

Please call if you have any questions.

Yours truly,



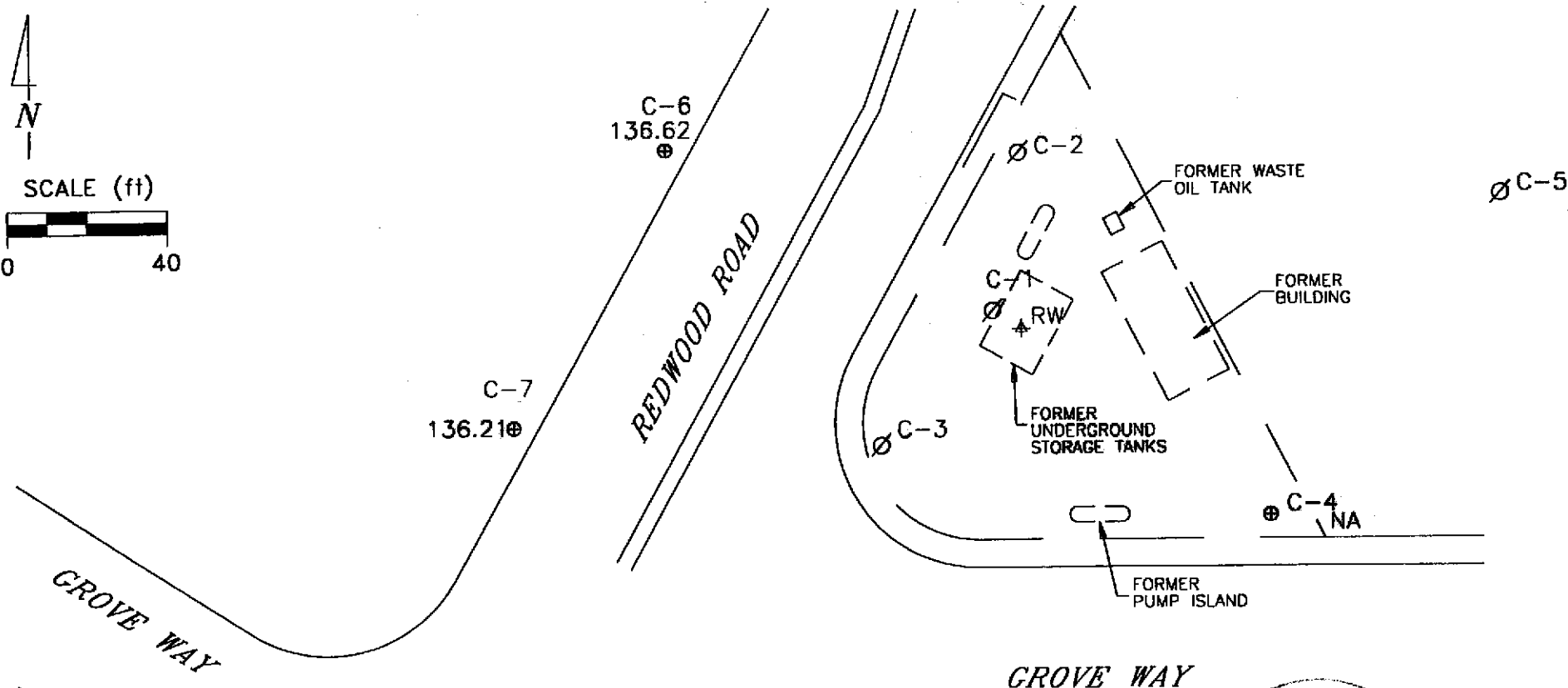
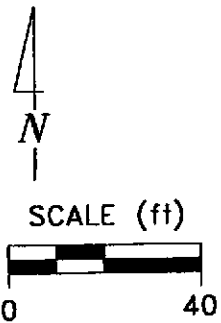
Scott Boor  
Project Coordinator

SDB/pb

attachments: Professional Engineering Appendix  
Cumulative Table of Well Data and Analytical Results  
Analytical Appendix  
Field Data Sheets

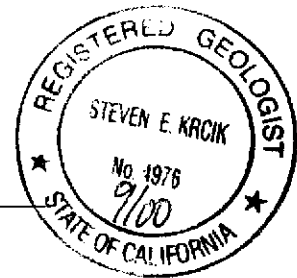
cc: **Scott Seery, Alameda County Health Services**  
Phil Conley, President, Board of Trustees, First Presbyterian Church

# **Professional Engineering Appendix**



EXPLANATION

- ⊕ MONITORING WELL
- ⊕★ RECOVERY WELL
- ⊗ ABANDONED WELL
- 136.21 GROUNDWATER ELEVATION (FT, MSL)
- NA DATA NOT AVAILABLE



Basemap from Geoconsultants, Inc.

PREPARED BY

**Former Chevron Station 9-2960**  
 2416 Grove Way  
 Castro Valley, California

**GROUNDWATER ELEVATION MAP,**  
**FEBRUARY 1, 2000**

**FIGURE:**  
**1**  
**PROJECT:**  
**DAC04**

# **Table of Well Data and Analytical Results**

## Cumulative Table of Well Data and Analytical Results

Vertical Measurements are in feet.

Volumetric Measurements are in gallons.

Analytical results are in parts per billion (ppb)

DATE	Vertical Measurements are in feet.			Volumetric Measurements are in gallons.			Notes	Analytical results are in parts per billion (ppb)					
	Well Head Elev.	Ground Water Elev.	Depth To Water	SPH Thickness	SPH Removed	Total SPH Removed		TPH-Gasoline	Benzene	Toluene	Ethyl-Benzene	Xylene	MTBE
<b>C-1</b>													
10/23/86	153.36	--	--	--	--	--	--	3100	6400	3700	--	4300	--
09/10/87	153.36	--	--	--	--	--	--	120,000	25,000	60,000	13,000	56,000	--
10/03/90	153.36	134.69	18.67	--	--	--	--	--	--	--	--	--	--
10/25/90	153.36	135.22	18.71	0.71	--	--	--	--	--	--	--	--	--
01/22/91	153.36	135.22	18.70	0.70	--	--	--	--	--	--	--	--	--
02/21/91	153.36	135.44	18.62	0.88	--	--	--	--	--	--	--	--	--
04/01/91	153.36	136.47	16.91	0.03	--	--	--	--	--	--	--	--	--
04/11/91	153.36	136.49	16.90	0.04	--	--	--	--	--	--	--	--	--
07/01/91	153.36	135.75	17.61	0.00	--	--	--	--	--	--	--	--	--
09/24/91	153.36	135.17	18.98	0.99	--	--	--	--	--	--	--	--	--
10/23/91	153.36	135.03	19.32	1.24	--	--	--	--	--	--	--	--	--
11/22/91	153.36	134.53	18.83	0.97	--	--	--	--	--	--	--	--	--
01/09/92	153.36	136.10	17.26	--	--	--	--	--	--	--	--	--	--
03/06/92	153.36	137.16	16.69	0.61	--	--	--	--	--	--	--	--	--
06/04/92	153.36	136.44	17.10	0.22	--	--	--	--	--	--	--	--	--
09/28/92	153.36	--	18.71	0.77	--	--	--	--	--	--	--	--	--
12/17/92	153.36	--	17.54	0.45	--	--	--	--	--	--	--	--	--
04/29/93	153.36	137.50	16.40	0.68	--	--	--	--	--	--	--	--	--
07/26/93	153.36	136.92	16.85	0.51	--	--	--	--	--	--	--	--	--
10/22/93	153.36	135.55	17.83	0.03	--	--	--	--	--	--	--	--	--
01/24/94	153.36	--	--	--	--	--	--	--	--	--	--	--	--
04/11/94	153.36	136.01	17.76	0.51	--	--	--	--	--	--	--	--	--
07/01/94	153.36	135.95	17.46	0.06	--	--	--	--	--	--	--	--	--
10/06/94	153.36	135.24	18.18	0.08	--	--	--	--	--	--	--	--	--
01/11/95	153.36	136.63	16.79	0.08	0.039	0.039	--	--	--	--	--	--	--
04/07/95	153.36	139.23	14.13	--	--	0.039	--	44,000	410	100	130	5400	--
07/20/95	153.36	136.84	16.52	--	--	0.039	--	16,000	96	81	53	1000	--
09/22/95	153.36	137.22	16.14	--	--	0.039	--	59,000	150	36	16	56	--
01/02/96	153.36	137.43	15.93	--	--	0.039	--	29,000	4500	1100	520	1900	<250
04/26/96	153.36	137.31	16.05	--	--	0.039	--	7200	1300	340	130	390	--
07/22/96	153.36	143.14	10.22	--	--	0.039	--	7300	2500	170	360	520	--
10/17/96	153.36	137.64	15.72	--	--	0.039	--	19,000	3400	59	360	430	--

CONTINUED ON NEXT PAGE

## Cumulative Table of Well Data and Analytical Results

Vertical Measurements are in feet.

Volumetric Measurements are in gallons.

Analytical results are in parts per billion (ppb)

DATE	Vertical Measurements are in feet.			Volumetric Measurements are in gallons.			Notes	Analytical results are in parts per billion (ppb)					
	Well Head Elev.	Ground Water Elev.	Depth To Water	SPH Thickness	SPH Removed	Total SPH Removed		TPH-Gasoline	Benzene	Toluene	Ethyl-Benzene	Xylene	MTBE
<b>C-1 (CONT'D)</b>													
01/23/97	153.36	138.91	14.45	--	--	0.039	--	15,000	2900	390	250	480	--
07/10/97	153.36	137.19	16.17	--	--	0.039	--	13,000	2100	69	200	380	--
01/15/98	153.36	--	--	--	--	0.039	Inaccessible	--	--	--	--	--	--
01/16/98	153.36	138.63	14.73	--	--	0.039	--	4700	1200	<20	140	40	--
07/09/98	153.36	138.14	15.22	--	--	0.039	--	9900	1500	60	150	170	--
01/08/99	153.36	--	--	--	--	--	Abandoned	--	--	--	--	--	--



## Cumulative Table of Well Data and Analytical Results

Vertical Measurements are in feet.			Volumetric Measurements are in gallons.				Analytical results are in parts per billion (ppb)						
DATE	Well Head Elev.	Ground Water Elev.	Depth To Water	SPH Thickness	SPH Removed	Total SPH Removed	Notes	TPH-Gasoline	Benzene	Toluene	Ethyl-Benzene	Xylene	MTBE
<b>C-2</b>													
10/23/86	151.84	--	--	--	--	--	--	30,000	2700	1900	--	1500	--
09/10/87	151.84	--	--	--	--	--	--	14,000	2600	2900	500	1200	--
10/16/89	151.84	--	--	--	--	--	--	600	260	34	1.7	41	--
01/04/90	151.84	--	--	--	--	--	--	2600	470	150	23	130	--
04/05/90	151.84	--	--	--	--	--	--	500	280	29	6.3	19	--
07/02/90	151.84	--	--	--	--	--	--	2400	670	110	17	76	--
10/03/90	151.84	--	--	--	--	--	--	--	--	--	--	--	--
10/25/90	151.84	135.24	16.60	--	--	--	--	1300	390	47	9.0	58	--
01/22/91	151.84	135.15	16.69	--	--	--	--	2600	680	88	29	130	--
02/21/91	151.84	135.53	16.31	--	--	--	--	--	--	--	--	--	--
04/01/91	151.84	136.76	15.08	--	--	--	--	--	--	--	--	--	--
04/11/91	151.84	136.61	15.23	--	--	--	--	--	--	--	--	--	--
07/01/91	151.84	135.88	15.96	--	--	--	--	--	--	--	--	--	--
09/24/91	151.84	135.33	16.51	--	--	--	--	3600	1400	63	6.9	63	--
10/23/91	151.84	135.18	16.66	--	--	--	--	--	--	--	--	--	--
11/22/91	151.84	135.47	16.37	--	--	--	--	--	--	--	--	--	--
01/09/92	151.84	136.28	15.56	--	--	--	--	7100	770	740	190	690	--
03/06/92	151.84	137.47	14.37	--	--	--	--	3200	250	230	59	220	--
06/04/92	151.84	136.80	15.04	--	--	--	--	1500	<0.5	180	42	130	--
09/28/92	151.84	135.44	16.40	--	--	--	--	6400	940	230	57	220	--
12/17/92	151.84	136.46	15.38	--	--	--	--	1500	370	160	6.0	25	--
04/29/93	151.84	136.87	14.97	--	--	--	--	1800	690	120	74	140	--
07/29/93	151.84	136.92	14.92	--	--	--	--	4300	1500	96	29	96	--
10/22/93	151.84	136.03	15.81	--	--	--	--	820	560	57	15	58	--
01/24/94	151.84	--	--	--	--	--	--	--	--	--	--	--	--
04/11/94	151.84	136.49	15.35	--	--	--	--	2000	240	48	36	110	--
07/01/94	151.84	136.44	15.40	--	--	--	--	370	55	12	3.1	8.6	--
10/06/94	151.84	135.84	16.00	--	--	--	--	150	47	4.8	1.8	5.4	--
01/11/95	151.84	137.06	14.78	--	--	--	--	52	0.65	<0.5	<0.5	<0.5	--
04/07/95	151.84	138.93	12.91	--	--	--	--	1500	260	64	52	85	--
07/20/95	151.84	136.81	15.03	--	--	--	--	3000	500	100	96	110	--
09/22/95	151.84	137.05	14.79	--	--	--	--	2000	630	120	20	79	--

CONTINUED ON NEXT PAGE

## Cumulative Table of Well Data and Analytical Results

Vertical Measurements are in feet.			Volumetric Measurements are in gallons.				Analytical results are in parts per billion (ppb)						
DATE	Well Head Elev.	Ground Water Elev.	Depth To Water	SPH Thickness	SPH Removed	Total SPH Removed	Notes	TPH-Gasoline	Benzene	Toluene	Ethyl-Benzene	Xylene	MTBE
<b>C-2 (CONT'D)</b>													
01/02/96	151.84	137.37	14.47	--	--	--	--	1900	240	110	58	180	<12
04/26/96	151.84	137.97	13.87	--	--	--	--	1300	340	190	44	120	--
07/22/96	151.84	136.73	15.11	--	--	--	--	3700	1100	140	150	330	--
10/17/96	151.84	136.80	15.04	--	--	--	--	22,000	3900	1600	350	1800	--
01/23/97	151.84	138.86	12.98	--	--	--	--	2000	260	48	76	94	--
07/10/97	151.84	137.21	14.63	--	--	--	--	5100	710	200	190	380	--
01/15/98	153.36	--	--	--	--	--	Inaccessible	--	--	--	--	--	--
01/16/98	151.84	138.61	13.23	--	--	--	--	7600	1600	130	320	650	--
07/09/98	151.84	138.17	13.67	--	--	--	--	10,000	1100	410	180	410	--
01/08/99	151.84	--	--	--	--	--	Abandoned	--	--	--	--	--	--

## Cumulative Table of Well Data and Analytical Results

Vertical Measurements are in feet.				Volumetric Measurements are in gallons.			Analytical results are in parts per billion (ppb)						
DATE	Well Head Elev.	Ground Water Elev.	Depth To Water	SPH Thickness	SPH Removed	Total SPH Removed	Notes	TPH-Gasoline	Benzene	Toluene	Ethyl-Benzene	Xylene	MTBE
<b>C-3</b>													
10/23/86	154.13	--	--	--	--	--	--	3300	49	24	--	20	--
09/10/87	154.13	--	--	--	--	--	--	200	110	2.6	<2.0	<2.0	--
10/16/89	154.13	--	--	--	--	--	--	900	640	4.2	1.6	16	--
01/04/90	154.13	--	--	--	--	--	--	920	430	7.0	6.0	7.0	--
04/05/90	154.13	--	--	--	--	--	--	930	690	3.4	5.1	4.8	--
07/02/90	154.13	--	--	--	--	--	--	1700	590	11	4.8	9.4	--
10/03/90	154.13	134.97	19.16	--	--	--	--	--	--	--	--	--	--
10/25/90	154.13	134.85	19.28	--	--	--	--	750	510	2.0	6.0	5.0	--
01/22/91	154.13	134.95	19.18	--	--	--	--	430	260	2.0	2.0	5.0	--
01/22/91	154.13	134.95	19.18	--	--	--	--	400	250	2.0	2.0	5.0	--
02/21/91	154.13	135.25	18.88	--	--	--	--	--	--	--	--	--	--
04/01/91	154.13	136.54	17.59	--	--	--	--	--	--	--	--	--	--
04/11/91	154.13	136.32	17.81	--	--	--	--	--	--	--	--	--	--
07/01/91	154.13	135.57	18.56	--	--	--	--	--	--	--	--	--	--
09/24/91	154.13	135.01	19.12	--	--	--	--	260	52	0.7	0.8	2.2	--
10/23/91	154.13	134.89	19.24	--	--	--	--	--	--	--	--	--	--
11/22/91	154.13	135.10	19.03	--	--	--	--	--	--	--	--	--	--
01/09/92	154.13	135.90	18.23	--	--	--	--	240	120	0.9	<0.5	1.6	--
03/06/92	154.13	137.09	17.04	--	--	--	--	230	68	1.2	1.2	1.3	--
06/04/92	154.13	136.34	17.79	--	--	--	--	80	36	0.6	0.5	0.7	--
09/28/92	154.13	135.13	19.00	--	--	--	--	84	49	<0.5	<0.5	1.5	--
12/17/92	154.13	135.95	18.18	--	--	--	--	220	30	<0.5	<0.5	<0.5	--
04/29/93	154.13	135.35	18.78	--	--	--	--	380	12	0.6	<0.5	<1.5	--
07/26/93	154.13	136.41	17.72	--	--	--	--	800	38	1.1	<0.5	<1.5	--
10/22/93	154.13	135.63	18.50	--	--	--	--	200	64	0.6	<0.5	<1.5	--
01/24/94	154.13	135.62	18.51	--	--	--	--	<50	<0.5	<0.5	<0.5	<0.5	--
04/11/94	154.13	136.09	18.04	--	--	--	--	100	3.6	2.1	<0.5	2.3	--
07/01/94	154.13	136.01	18.12	--	--	--	--	140	3.7	1.2	<0.5	1.0	--
10/06/94	154.13	135.50	18.63	--	--	--	--	<50	<0.5	<0.5	<0.5	<0.5	--

CONTINUED ON NEXT PAGE

### Cumulative Table of Well Data and Analytical Results

Vertical Measurements are in feet.				Volumetric Measurements are in gallons.			Analytical results are in parts per billion (ppb)						
DATE	Well Head Elev.	Ground Water Elev.	Depth To Water	SPH Thickness	SPH Removed	Total SPH Removed	Notes	TPH-Gasoline	Benzene	Toluene	Ethyl-Benzene	Xylene	MTBE
<b>C-3 (CONT'D)</b>													
01/11/95	154.13	137.01	17.12	--	--	--	--	<50	<0.5	<0.5	<0.5	<0.5	--
04/07/95	154.13	138.34	15.79	--	--	--	--	<50	<0.5	<0.5	<0.5	<0.5	--
07/20/95	154.13	136.37	17.76	--	--	--	--	<50	1.5	1.9	<0.5	3.5	--
09/22/95	154.13	136.58	17.55	--	--	--	--	<50	<0.5	<0.5	<0.5	<0.5	--
01/02/96	154.13	136.88	17.25	--	--	--	--	<50	<0.5	<0.5	<0.5	1.1	<2.5
04/26/96	154.13	137.42	16.71	--	--	--	--	<50	<0.5	<0.5	<0.5	<0.5	--
07/22/96	154.13	136.50	17.63	--	--	--	--	<50	<0.5	<0.5	<0.5	<0.5	--
10/17/96	154.13	136.33	17.80	--	--	--	--	<50	<0.5	<0.5	<0.5	<0.5	--
01/23/97	154.13	138.33	15.80	--	--	--	--	<50	<0.5	<0.5	<0.5	<0.5	--
07/10/97	154.13	136.63	17.50	--	--	--	--	<50	<0.5	<0.5	<0.5	<0.5	--
01/15/98	154.13	137.98	16.15	--	--	--	--	<50	<0.5	<0.5	<0.5	<0.5	--
01/16/98	154.13	138.04	16.09	--	--	--	Regauge	--	--	--	--	--	--
07/09/98	154.13	137.57	16.56	--	--	--	--	<50	<0.5	<0.5	<0.5	<0.5	--
01/08/99	154.13	--	--	--	--	--	Abandoned	--	--	--	--	--	--

## Cumulative Table of Well Data and Analytical Results

Vertical Measurements are in feet.				Volumetric Measurements are in gallons.			Analytical results are in parts per billion (ppb)						
DATE	Well Head Elev.	Ground Water Elev.	Depth To Water	SPH Thickness	SPH Removed	Total SPH Removed	Notes	TPH-Gasoline	Benzene	Toluene	Ethyl-Benzene	Xylene	MTBE
<b>C-4</b>													
10/23/86	156.00	--	--	--	--	--	--	570	3.0	4.0	--	5.0	--
09/10/87	156.00	--	--	--	--	--	--	500	3.0	<0.5	<0.5	<0.5	--
10/16/89	156.00	--	--	--	--	--	--	<500	12	1.0	<0.5	0.8	--
01/04/90	156.00	--	--	--	--	--	--	<500	5.0	<0.5	<0.5	0.9	--
04/05/90	156.00	--	--	--	--	--	--	<50	6.6	<0.5	<0.5	0.7	--
07/02/90	156.00	--	--	--	--	--	--	71	4.1	<0.5	<0.5	<0.5	--
10/03/90	156.00	--	--	--	--	--	--	--	--	--	--	--	--
10/25/90	156.00	135.57	20.43	--	--	--	--	<50	2.0	<0.5	<0.5	<0.5	--
01/22/91	156.00	135.50	20.50	--	--	--	--	<50	3.0	<0.5	<0.5	<0.5	--
02/21/91	156.00	135.77	20.23	--	--	--	--	--	--	--	--	--	--
04/01/91	156.00	136.97	19.03	--	--	--	--	--	--	--	--	--	--
04/11/91	156.00	136.95	19.05	--	--	--	--	--	--	--	--	--	--
07/01/91	156.00	136.10	19.90	--	--	--	--	--	--	--	--	--	--
09/24/91	156.00	135.59	20.41	--	--	--	--	87	1.6	<0.5	<0.5	<0.5	--
10/23/91	156.00	135.47	20.53	--	--	--	--	--	--	--	--	--	--
11/22/91	156.00	135.65	20.35	--	--	--	--	--	--	--	--	--	--
01/09/92	156.00	136.46	19.54	--	--	--	--	51	4.3	<0.5	<0.5	<0.5	--
01/09/92	156.00	136.46	19.54	--	--	--	--	<50	4.8	<0.5	<0.5	<0.5	--
03/06/92	156.00	137.74	18.26	--	--	--	--	<50	0.8	<0.5	<0.5	<0.5	--
06/04/92	156.00	137.08	18.92	--	--	--	--	<50	<0.5	<0.5	<0.5	0.7	--
09/28/92	156.00	135.69	20.31	--	--	--	--	<50	<0.5	<0.5	<0.5	<0.5	--
12/17/92	156.00	136.43	19.57	--	--	--	--	<50	<0.5	<0.5	<0.5	<0.5	--
04/29/93	156.00	138.22	17.78	--	--	--	--	<50	<0.5	<0.5	<0.5	<1.5	--
07/26/93	156.00	--	--	--	--	--	--	--	--	--	--	--	--
08/18/93	156.00	137.09	18.91	--	--	--	--	<50	<0.5	<0.5	<0.5	<1.5	--
10/22/93	156.00	136.61	19.39	--	--	--	--	<50	2.9	2.1	1.1	4.3	--
01/24/94	156.00	136.58	19.42	--	--	--	--	<50	<0.5	<0.5	<0.5	<0.5	--
04/11/94	156.00	136.86	19.14	--	--	--	--	<50	<0.5	0.6	<0.5	0.5	--
07/01/94	156.00	136.80	19.20	--	--	--	--	<50	<0.5	<0.5	<0.5	<0.5	--
10/06/94	156.00	136.26	19.74	--	--	--	--	<50	<0.5	<0.5	<0.5	<0.5	--

CONTINUED ON NEXT PAGE

## Cumulative Table of Well Data and Analytical Results

Vertical Measurements are in feet.

Volumetric Measurements are in gallons.

Analytical results are in parts per billion (ppb)

DATE	Vertical Measurements are in feet.			Volumetric Measurements are in gallons.			Notes	Analytical results are in parts per billion (ppb)						
	Well Head Elev.	Ground Water Elev.	Depth To Water	SPH Thickness	SPH Removed	Total SPH Removed		TPH-Gasoline	Benzene	Toluene	Ethyl-Benzene	Xylene	MTBE	
<b>C-4 (CONT'D)</b>														
01/11/95	156.00	139.70	16.30	--	--	--	--	<50	<0.5	<0.5	<0.5	<0.5	<0.5	--
04/07/95	156.00	139.49	16.51	--	--	--	--	<50	<0.5	<0.5	<0.5	<0.5	<0.5	--
07/20/95	156.00	137.20	18.80	--	--	--	--	<50	<0.5	<0.5	<0.5	<0.5	<0.5	--
09/22/95	156.00	137.26	18.74	--	--	--	--	<50	<0.5	<0.5	<0.5	<0.5	<0.5	--
01/02/96	156.00	137.65	18.35	--	--	--	--	<50	1.6	1.8	0.95	4.1	<2.5	--
04/26/96	156.00	138.43	17.57	--	--	--	--	<50	<0.5	<0.5	<0.5	<0.5	<0.5	--
07/22/96	156.00	137.00	19.00	--	--	--	--	<50	<0.5	<0.5	<0.5	<0.5	<0.5	--
10/17/96	156.00	136.96	19.04	--	--	--	--	<50	<0.5	<0.5	<0.5	<0.5	<0.5	--
01/23/97	156.00	139.31	16.69	--	--	--	--	<50	<0.5	<0.5	<0.5	<0.5	<0.5	--
07/10/97	156.00	137.46	18.54	--	--	--	Sampled annually	--	--	--	--	--	--	--
01/15/98	156.00	143.92	12.08	--	--	--	--	<50	1.0	1.4	<0.5	3.5	--	--
01/16/98	156.00	138.84	17.16	--	--	--	Regauge	--	--	--	--	--	--	--
07/09/98	156.00	138.29	17.71	--	--	--	--	--	--	--	--	--	--	--
01/08/99	156.00	139.19	16.81	--	--	--	--	<50	<0.5	<0.5	<0.5	<0.5	<0.5	--
07/09/99	156.00	--	--	--	--	--	Unable to locate	--	--	--	--	--	--	--
02/01/00	156.00	--	--	--	--	--	Unable to locate	--	--	--	--	--	--	--

## Cumulative Table of Well Data and Analytical Results

Vertical Measurements are in feet.				Volumetric Measurements are in gallons.			Analytical results are in parts per billion (ppb)						
DATE	Well Head Elev.	Ground Water Elev.	Depth To Water	SPH Thickness	SPH Removed	Total SPH Removed	Notes	TPH-Gasoline	Benzene	Toluene	Ethyl-Benzene	Xylene	MTBE
<b>C-5</b>													
10/03/90	153.38	135.60	17.78	--	--	--	--	<50	<0.5	<0.5	<0.5	<0.5	--
10/25/90	153.38	135.46	17.92	--	--	--	--	<50	<0.5	<0.5	<0.5	<0.5	--
11/09/90	153.38	135.46	17.92	--	--	--	--	<50	<0.5	<0.5	<0.5	<0.5	--
01/22/91	153.38	135.58	17.80	--	--	--	--	<50	<0.5	<0.5	<0.5	<0.5	--
02/21/91	153.38	135.87	17.51	--	--	--	--	--	--	--	--	--	--
04/01/91	153.38	137.07	16.31	--	--	--	--	--	--	--	--	--	--
04/11/91	153.38	137.02	16.36	--	--	--	--	--	--	--	--	--	--
07/01/91	153.38	136.26	17.12	--	--	--	--	--	--	--	--	--	--
09/24/91	153.38	135.68	17.70	--	--	--	--	<50	<0.5	<0.5	<0.5	<0.5	--
09/24/91	153.38	135.68	17.70	--	--	--	--	<50	<0.5	<0.5	<0.5	<0.5	--
10/23/91	153.38	135.56	17.82	--	--	--	--	--	--	--	--	--	--
11/22/91	153.38	135.77	17.61	--	--	--	--	--	--	--	--	--	--
01/09/92	153.38	136.34	17.04	--	--	--	--	<50	<0.5	0.7	<0.5	<0.5	--
03/06/92	153.38	137.62	15.76	--	--	--	--	<50	<0.5	<0.5	<0.5	<0.5	--
06/04/92	153.38	136.98	16.40	--	--	--	--	<50	<0.5	<0.5	<0.5	<0.5	--
09/28/92	153.38	135.80	17.58	--	--	--	--	<50	<0.5	<0.5	<0.5	<0.5	--
12/17/92	153.38	136.56	16.82	--	--	--	--	<50	<0.5	<0.5	<0.5	<0.5	--
04/29/93	153.38	138.14	15.24	--	--	--	--	<50	<0.5	<0.5	<0.5	<1.5	--
07/26/93	153.38	137.08	16.30	--	--	--	--	<50	<0.5	<0.5	<0.5	<1.5	--
10/22/93	153.38	136.30	17.08	--	--	--	--	52	2.3	2.7	1.1	5.2	--
01/24/94	153.38	136.25	17.13	--	--	--	--	<50	<0.5	<0.5	<0.5	<0.5	--
04/11/94	153.38	136.75	16.63	--	--	--	--	<50	<0.5	0.7	<0.5	0.6	--
07/01/94	153.38	136.73	16.65	--	--	--	--	<50	<0.5	<0.5	<0.5	<0.5	--
10/06/94	153.38	136.16	17.22	--	--	--	--	<50	<0.5	<0.5	<0.5	<0.5	--
01/11/95	153.38	137.41	15.97	--	--	--	--	<50	<0.5	<0.5	<0.5	<0.5	--
04/07/95	153.38	139.37	14.01	--	--	--	--	<50	<0.5	<0.5	<0.5	<0.5	--
07/20/95	153.38	137.17	16.21	--	--	--	--	<50	<0.5	<0.5	<0.5	0.61	--
09/22/95	153.38	137.07	16.31	--	--	--	--	62	<0.5	<0.5	<0.5	<0.5	--
01/02/96	153.38	137.56	15.82	--	--	--	--	<50	<0.5	<0.5	<0.5	<0.5	<2.5
04/26/96	153.38	138.41	14.97	--	--	--	--	<50	<0.5	<0.5	<0.5	<0.5	--
07/22/96	153.38	137.06	16.32	--	--	--	--	<50	<0.5	<0.5	<0.5	<0.5	--
10/17/96	153.38	136.88	16.50	--	--	--	--	<50	<0.5	<0.5	<0.5	<0.5	--
01/23/97	153.38	139.18	14.20	--	--	--	--	<50	<0.5	<0.5	<0.5	<0.5	--
07/10/97	153.38	--	--	--	--	--	Abandoned	--	--	--	--	--	--

## Cumulative Table of Well Data and Analytical Results

Vertical Measurements are in feet.

Volumetric Measurements are in gallons.

Analytical results are in parts per billion (ppb)

DATE	Vertical Measurements are in feet.			Volumetric Measurements are in gallons.			Notes	Analytical results are in parts per billion (ppb)						
	Well Head Elev.	Ground Water Elev.	Depth To Water	SPH Thickness	SPH Removed	Total SPH Removed		TPH-Gasoline	Benzene	Toluene	Ethyl-Benzene	Xylene	MTBE	
<b>C-6</b>														
10/03/90	152.84	134.70	18.14	--	--	--	--	<50	<0.5	<0.5	<0.5	<0.5	<0.5	--
10/25/90	152.84	134.55	18.29	--	--	--	--	<50	<0.5	1.0	<0.5	<0.5	<0.5	--
11/09/90	152.84	134.58	18.26	--	--	--	--	<50	<0.5	<0.5	<0.5	<0.5	<0.5	--
01/22/91	152.84	134.69	18.15	--	--	--	--	<50	<0.5	<0.5	<0.5	<0.5	<0.5	--
02/21/91	152.84	134.92	17.92	--	--	--	--	--	--	--	--	--	--	--
04/01/91	152.84	135.73	17.11	--	--	--	--	--	--	--	--	--	--	--
04/11/91	152.84	135.83	17.01	--	--	--	--	--	--	--	--	--	--	--
07/01/91	152.84	135.12	17.72	--	--	--	--	--	--	--	--	--	--	--
09/24/91	152.84	135.72	17.12	--	--	--	--	<50	<0.5	<0.5	<0.5	<0.5	<0.5	--
10/23/91	152.84	134.59	18.25	--	--	--	--	--	--	--	--	--	--	--
11/22/91	152.84	134.79	18.05	--	--	--	--	--	--	--	--	--	--	--
01/09/92	152.84	135.42	17.42	--	--	--	--	<50	<0.5	<0.5	<0.5	<0.5	<0.5	--
03/06/92	152.84	136.33	16.51	--	--	--	--	<50	<0.5	<0.5	<0.5	<0.5	<0.5	--
06/04/92	152.84	135.83	17.01	--	--	--	--	<50	<0.5	<0.5	<0.5	<0.5	<0.5	--
09/28/92	152.84	134.84	18.00	--	--	--	--	<50	<0.5	<0.5	<0.5	<0.5	<0.5	--
12/17/92	152.84	135.58	17.26	--	--	--	--	<50	<0.5	<0.5	<0.5	<0.5	<0.5	--
04/29/93	152.84	136.61	16.23	--	--	--	--	<50	<0.5	<0.5	<0.5	<0.5	<1.5	--
07/29/93	152.84	135.88	16.96	--	--	--	--	<50	<0.5	<0.5	<0.5	<0.5	<1.5	--
10/22/93	152.84	135.38	17.46	--	--	--	--	74	7.4	6.1	3.3	9.7	--	--
01/24/94	152.84	135.38	17.46	--	--	--	--	<50	<0.5	<0.5	<0.5	<0.5	<0.5	--
04/11/94	152.84	135.64	17.20	--	--	--	--	<50	<0.5	<0.5	<0.5	<0.5	<0.5	--
07/01/94	152.84	135.66	17.18	--	--	--	--	<50	<0.5	<0.5	<0.5	<0.5	<0.5	--
10/06/94	152.84	135.19	17.65	--	--	--	--	<50	<0.5	<0.5	<0.5	<0.5	<0.5	--
01/11/95	152.84	136.18	16.66	--	--	--	--	<50	<0.5	<0.5	<0.5	<0.5	<0.5	--
04/07/95	152.84	137.25	15.59	--	--	--	--	<50	<0.5	<0.5	<0.5	<0.5	<0.5	--
07/20/95	152.84	135.80	17.04	--	--	--	--	<50	<0.5	<0.5	<0.5	<0.5	<0.5	--
09/22/95	152.84	135.74	17.10	--	--	--	--	<50	<0.5	<0.5	<0.5	<0.5	<0.5	--
01/02/96	152.84	136.08	16.76	--	--	--	--	<50	<0.5	<0.5	<0.5	<0.5	<0.5	<2.5
04/26/96	152.84	136.64	16.20	--	--	--	--	<50	<0.5	<0.5	<0.5	<0.5	<0.5	--
07/22/96	152.84	135.79	17.05	--	--	--	--	<50	<0.5	<0.5	<0.5	<0.5	<0.5	--
10/17/96	152.84	135.62	17.22	--	--	--	--	<50	<0.5	<0.5	<0.5	<0.5	<0.5	--

CONTINUED ON NEXT PAGE



## Cumulative Table of Well Data and Analytical Results

Vertical Measurements are in feet.

Volumetric Measurements are in gallons.

Analytical results are in parts per billion (ppb)

DATE	Vertical Measurements are in feet.			Volumetric Measurements are in gallons.			Notes	Analytical results are in parts per billion (ppb)					
	Well Head Elev.	Ground Water Elev.	Depth To Water	SPH Thickness	SPH Removed	Total SPH Removed		TPH-Gasoline	Benzene	Toluene	Ethyl-Benzene	Xylene	MTBE
<b>C-6 (CONT'D)</b>													
01/23/97	152.84	136.99	15.85	--	--	--	--	<50	<0.5	<0.5	<0.5	<0.5	--
07/10/97	152.84	135.95	16.89	--	--	--	--	<50	<0.5	<0.5	<0.5	<0.5	--
01/15/98	152.84	136.64	16.20	--	--	--	--	<50	<0.5	<0.5	<0.5	<0.5	--
01/16/98	152.84	136.74	16.10	--	--	--	Regauge	--	--	--	--	--	--
07/09/98	152.84	136.71	16.13	--	--	--	--	<50	<0.5	<0.5	<0.5	<0.5	--
01/08/99	152.84	137.57	15.27	--	--	--	--	<50	<0.5	<0.5	<0.5	<0.5	--
07/09/99	152.84	136.60	16.24	--	--	--	--	<50	<0.5	<0.5	<0.5	<0.5	<5.0
02/01/00	152.84	136.57	16.27	--	--	--	--	<50	<0.5	<0.5	<0.5	<0.5	<5.0

## Cumulative Table of Well Data and Analytical Results

Vertical Measurements are in feet.

Volumetric Measurements are in gallons.

Analytical results are in parts per billion (ppb)

DATE	Vertical Measurements are in feet.		Depth To Water	Volumetric Measurements are in gallons.			Notes	Analytical results are in parts per billion (ppb)						
	Well Head Elev.	Ground Water Elev.		SPH Thickness	SPH Removed	Total SPH Removed		TPH- Gasoline	Benzene	Toluene	Ethyl- Benzene	Xylene	MTBE	
<b>C-7</b>														
10/03/90	155.34	134.52	20.82	--	--	--	--	<50	<0.5	<0.5	<0.5	<0.5	<0.5	--
10/25/90	155.34	134.43	20.91	--	--	--	--	<50	<0.5	1.0	<0.5	<0.5	<0.5	--
11/09/90	155.34	134.40	20.94	--	--	--	--	<50	<0.5	<0.5	<0.5	<0.5	<0.5	--
01/22/91	155.34	133.84	21.50	--	--	--	--	<50	4.0	<0.5	<0.5	<0.5	<0.5	--
02/21/91	155.34	134.63	20.71	--	--	--	--	--	--	--	--	--	--	--
04/01/91	155.34	135.34	20.00	--	--	--	--	--	--	--	--	--	--	--
04/11/91	155.34	135.29	20.05	--	--	--	--	--	--	--	--	--	--	--
07/01/91	155.34	134.82	20.52	--	--	--	--	--	--	--	--	--	--	--
09/24/91	155.34	134.52	20.82	--	--	--	--	<50	<0.5	<0.5	<0.5	<0.5	<0.5	--
10/23/91	155.34	134.43	20.91	--	--	--	--	--	--	--	--	--	--	--
11/22/91	155.34	134.55	20.79	--	--	--	--	--	--	--	--	--	--	--
01/09/92	155.34	135.18	20.16	--	--	--	--	<50	<0.5	<0.5	<0.5	<0.5	0.9	--
03/06/92	155.34	135.92	19.42	--	--	--	--	<50	<0.5	<0.5	<0.5	<0.5	<0.5	--
06/04/92	155.34	135.53	19.81	--	--	--	--	250	<0.5	<0.5	<0.5	<0.5	<0.5	--
09/28/92	155.34	134.69	20.65	--	--	--	--	<50	<0.5	<0.5	<0.5	<0.5	<0.5	--
12/17/92	155.34	135.32	20.02	--	--	--	--	<50	<0.5	<0.5	<0.5	<0.5	<0.5	--
04/29/93	155.34	136.19	19.15	--	--	--	--	<50	<0.5	<0.5	<0.5	<0.5	<1.5	--
07/26/93	155.34	135.57	19.77	--	--	--	--	<50	<0.5	<0.5	<0.5	<0.5	<1.5	--
10/22/93	155.34	135.17	20.17	--	--	--	--	--	--	--	--	--	--	--
01/24/94	155.34	135.11	20.23	--	--	--	--	<50	<0.5	<0.5	<0.5	<0.5	<0.5	--
04/11/94	155.34	135.39	19.95	--	--	--	--	<50	<0.5	<0.5	<0.5	<0.5	<0.5	--
07/01/94	155.34	135.42	19.92	--	--	--	--	<50	<0.5	<0.5	<0.5	<0.5	<0.5	--
10/06/94	155.34	135.03	20.31	--	--	--	--	<50	<0.5	<0.5	<0.5	<0.5	<0.5	--
01/11/95	155.34	135.98	19.36	--	--	--	--	<50	<0.5	<0.5	<0.5	<0.5	<0.5	--
04/07/95	155.34	136.84	18.50	--	--	--	--	<50	<0.5	<0.5	<0.5	<0.5	<0.5	--
07/20/95	155.34	135.46	19.88	--	--	--	--	<50	<0.5	<0.5	<0.5	<0.5	<0.5	--
09/22/95	155.34	135.38	19.96	--	--	--	--	<50	<0.5	<0.5	<0.5	<0.5	<0.5	--
01/02/96	155.34	135.64	19.70	--	--	--	--	<50	<0.5	<0.5	<0.5	<0.5	<0.5	<2.5
04/26/96	155.34	136.17	19.17	--	--	--	--	<50	<0.5	<0.5	<0.5	<0.5	<0.5	--
07/22/96	155.34	135.49	19.85	--	--	--	--	<50	<0.5	<0.5	<0.5	<0.5	<0.5	--
10/17/96	155.34	135.34	20.00	--	--	--	--	<50	<0.5	<0.5	<0.5	<0.5	<0.5	--

CONTINUED ON NEXT PAGE

## Cumulative Table of Well Data and Analytical Results

Vertical Measurements are in feet.

Volumetric Measurements are in gallons.

Analytical results are in parts per billion (ppb)

DATE	Vertical Measurements are in feet.			Volumetric Measurements are in gallons.			Notes	Analytical results are in parts per billion (ppb)					
	Well Head Elev.	Ground Water Elev.	Depth To Water	SPH Thickness	SPH Removed	Total SPH Removed		TPH-Gasoline	Benzene	Toluene	Ethyl-Benzene	Xylene	MTBE
<b>C-7 (CONT'D)</b>													
01/23/97	155.34	136.44	18.90	--	--	--	--	<50	<0.5	<0.5	<0.5	<0.5	--
07/10/97	155.34	135.58	19.76	--	--	--	--	<50	<0.5	<0.5	<0.5	<0.5	--
01/15/98	155.34	136.02	19.32	--	--	--	--	<50	<0.5	<0.5	<0.5	<0.5	--
01/16/98	155.34	136.14	19.20	--	--	--	Regauge	--	--	--	--	--	--
07/09/98	155.34	136.02	19.32	--	--	--	--	<50	<0.5	<0.5	<0.5	<0.5	--
01/08/99	155.34	136.83	18.51	--	--	--	--	<50	<0.5	<0.5	<0.5	<0.5	--
07/09/99	155.34	136.16	19.18	--	--	--	--	<50	<0.5	<0.5	<0.5	<0.5	<5.0
02/01/00	155.34	136.21	19.13	--	--	--	--	<50	<0.5	<0.5	<0.5	<0.5	<5.0

## Cumulative Table of Well Data and Analytical Results

Vertical Measurements are in feet.

Volumetric Measurements are in gallons.

Analytical results are in parts per billion (ppb)

DATE	Well	Ground	Depth	Volumetric Measurements are in gallons.			Notes	Analytical results are in parts per billion (ppb)					
	Head Elev.	Water Elev.	To Water	SPH Thickness	SPH Removed	Total SPH Removed		TPH-Gasoline	Benzene	Toluene	Ethyl-Benzene	Xylene	MTBE
<b>TRIP BLANK</b>													
10/03/90	--	--	--	--	--	--	--	<50	<0.5	<0.5	<0.5	<0.5	--
10/25/90	--	--	--	--	--	--	--	<50	<0.5	<0.5	<0.5	<0.5	--
11/09/90	--	--	--	--	--	--	--	<50	<0.5	<0.5	<0.5	<0.5	--
01/22/91	--	--	--	--	--	--	--	<50	<0.5	<0.5	<0.5	<0.5	--
09/24/91	--	--	--	--	--	--	--	<50	<0.5	<0.5	<0.5	<0.5	--
01/09/92	--	--	--	--	--	--	--	<50	<0.5	<0.5	<0.5	<0.5	--
03/06/92	--	--	--	--	--	--	--	<50	<0.5	<0.5	<0.5	<0.5	--
06/04/92	--	--	--	--	--	--	--	<50	<0.5	<0.5	<0.5	<0.5	--
09/28/92	--	--	--	--	--	--	--	<50	<0.5	<0.5	<0.5	<0.5	--
12/17/92	--	--	--	--	--	--	--	<50	<0.5	<0.5	<0.5	<0.5	--
04/29/93	--	--	--	--	--	--	--	<50	<0.5	<0.5	<0.5	<1.5	--
07/26/93	--	--	--	--	--	--	--	<50	<0.5	<0.5	<0.5	<1.5	--
10/22/93	--	--	--	--	--	--	--	<50	<0.5	<0.5	<0.5	<1.5	--
01/24/94	--	--	--	--	--	--	--	<50	<0.5	<0.5	<0.5	<0.5	--
04/11/94	--	--	--	--	--	--	--	<50	<0.5	<0.5	<0.5	<0.5	--
07/01/94	--	--	--	--	--	--	--	<50	<0.5	<0.5	<0.5	<0.5	--
10/06/94	--	--	--	--	--	--	--	<50	<0.5	<0.5	<0.5	<0.5	--
01/11/95	--	--	--	--	--	--	--	<50	<0.5	<0.5	<0.5	<0.5	--
04/07/95	--	--	--	--	--	--	--	<50	<0.5	<0.5	<0.5	<0.5	--
07/20/95	--	--	--	--	--	--	--	<50	<0.5	<0.5	<0.5	<0.5	--
09/22/95	--	--	--	--	--	--	--	<50	<0.5	<0.5	<0.5	<0.5	--
01/02/96	--	--	--	--	--	--	--	<50	<0.5	<0.5	<0.5	<0.5	--
04/26/96	--	--	--	--	--	--	--	<50	<0.5	<0.5	<0.5	<0.5	--
07/22/96	--	--	--	--	--	--	--	<50	<0.5	<0.5	<0.5	<0.5	--
10/17/96	--	--	--	--	--	--	--	<50	<0.5	<0.5	<0.5	<0.5	--

CONTINUED ON NEXT PAGE

## Cumulative Table of Well Data and Analytical Results

Vertical Measurements are in feet.

Volumetric Measurements are in gallons.

Analytical results are in parts per billion (ppb)

DATE	Well	Ground	Depth	Total			Notes	TPH- Gasoline	Benzene	Toluene	Ethyl- Benzene	Xylene	MTBE
	Head Elev.	Water Elev.	To Water	SPH Thickness	SPH Removed	SPH Removed							
<b>TRIP BLANK (CONT'D)</b>													
01/23/97	--	--	--	--	--	--	--	<50	<0.5	<0.5	<0.5	<0.5	--
07/10/97	--	--	--	--	--	--	--	<50	<0.5	<0.5	<0.5	<0.5	--
01/15/98	--	--	--	--	--	--	--	<50	<0.5	<0.5	<0.5	<0.5	--
07/09/98	--	--	--	--	--	--	--	<50	<0.5	<0.5	<0.5	<0.5	--
01/08/99	--	--	--	--	--	--	--	<50	<0.5	<0.5	<0.5	<0.5	--
02/01/00	--	--	--	--	--	--	--	<50	<0.5	<0.5	<0.5	<0.5	<5.0

Note: Blaine Tech Services, Inc. began routine monitoring of the groundwater wells at this site on November 1, 1994.

Earlier field data and analytical results are drawn from the September 27, 1994 Groundwater Technology, Inc. report.

**ABBREVIATIONS:**

TPH = Total Petroleum Hydrocarbons

SPH = Separate-Phase Hydrocarbons

MTBE = Methyl t-butyl ether

# Analytical Appendix



# Sequoia Analytical

1551 Industrial Road  
San Carlos, CA 94070-4111  
(650) 232-9600  
FAX (650) 232-9612

February 16, 2000

Scott Boor  
Blaine Tech Services  
1680 Rogers Avenue  
San Jose, CA 95112

RE: Chevron/L002030

Dear Scott Boor:

Enclosed are the results of analyses for sample(s) received by the laboratory on February 2, 2000. If you have any questions concerning this report, please feel free to contact me.

Sincerely,

Wayne Stevenson  
Project Manager

CA ELAP Certificate Number I-2360





Blaine Tech Services 1680 Rogers Avenue San Jose, CA 95112	Project: Blaine/Chevron Project Number: Chevron 9-2960/2416 Grove, Castro Valley Project Manager: Scott Boor	Sampled: 2/1/00 Received: 2/2/00 Reported: 2/16/00
--	--	--

**ANALYTICAL REPORT FOR L002030**

Sample Description	Laboratory Sample Number	Sample Matrix	Date Sampled
C6	L002030-01	Water	2/1/00
C7	L002030-02	Water	2/1/00
TB	L002030-03	Water	2/1/00







Blaine Tech Services 1680 Rogers Avenue San Jose, CA 95112	Project: Blaine/Chevron Project Number: Chevron 9-2960/2416 Grove, Castro Valley Project Manager: Scott Boor	Sampled: 2/1/00 Received: 2/2/00 Reported: 2/16/00
--	--	--

**Sample Description:** C6  
**Laboratory Sample Number:** L002030-01

Analyte	Batch Number	Date Prepared	Date Analyzed	Specific Method/ Surrogate Limits	Reporting Limit	Result	Units	Notes*
---------	--------------	---------------	---------------	--------------------------------------	-----------------	--------	-------	--------

Sequoia Analytical - San Carlos

Total Purgeable Hydrocarbons (C6-C12), BTEX and MTBE by DHS LUFT

Purgeable Hydrocarbons as Gasoline	0020027	2/7/00	2/8/00		50.0	ND	ug/l	
Benzene	"	"	"		0.500	ND	"	
Toluene	"	"	"		0.500	ND	"	
Ethylbenzene	"	"	"		0.500	ND	"	
Xylenes (total)	"	"	"		0.500	ND	"	
Methyl tert-butyl ether	"	"	"		5.00	ND	"	
Surrogate: <i>a,a,a</i> -Trifluorotoluene	"	"	"	70.0-130		94.3	%	





Blaine Tech Services 1680 Rogers Avenue San Jose, CA 95112	Project: Blaine/Chevron Project Number: Chevron 9-2960/2416 Grove, Castro Valley Project Manager: Scott Boor	Sampled: 2/1/00 Received: 2/2/00 Reported: 2/16/00
--	--	--

**Sample Description:** C7  
**Laboratory Sample Number:** L002030-02

Analyte	Batch Number	Date Prepared	Date Analyzed	Specific Method/ Surrogate Limits	Reporting Limit	Result	Units	Notes*
---------	--------------	---------------	---------------	--------------------------------------	-----------------	--------	-------	--------

**Sequoia Analytical - San Carlos**

**Total Purgeable Hydrocarbons (C6-C12), BTEX and MTBE by DHS LUFT**

Purgeable Hydrocarbons as Gasoline	0020027	2/7/00	2/8/00		50.0	ND	ug/l	
Benzene	"	"	"		0.500	ND	"	
Toluene	"	"	"		0.500	ND	"	
Ethylbenzene	"	"	"		0.500	ND	"	
Xylenes (total)	"	"	"		0.500	ND	"	
Methyl tert-butyl ether	"	"	"		5.00	ND	"	
<i>Surrogate: a,a,a-Trifluorotoluene</i>	"	"	"	70.0-130		92.6	%	





Blaine Tech Services 1680 Rogers Avenue San Jose, CA 95112	Project: Blaine/Chevron Project Number: Chevron 9-2960/2416 Grove, Castro Valley Project Manager: Scott Boor	Sampled: 2/1/00 Received: 2/2/00 Reported: 2/16/00
--	--	--

**Sample Description:** TB  
**Laboratory Sample Number:** L002030-03

Analyte	Batch Number	Date Prepared	Date Analyzed	Specific Method/ Surrogate Limits	Reporting Limit	Result	Units	Notes*
---------	--------------	---------------	---------------	--------------------------------------	-----------------	--------	-------	--------

**Sequoia Analytical - San Carlos**

**Total Purgeable Hydrocarbons (C6-C12), BTEX and MTBE by DHS LUFT**

Purgeable Hydrocarbons as Gasoline	0020027	2/7/00	2/7/00		50.0	ND	ug/l	
Benzene	"	"	"		0.500	ND	"	
Toluene	"	"	"		0.500	ND	"	
Ethylbenzene	"	"	"		0.500	ND	"	
Xylenes (total)	"	"	"		0.500	ND	"	
Methyl tert-butyl ether	"	"	"		5.00	ND	"	
Surrogate: <i>a,a,a-Trifluorotoluene</i>	"	"	"	70.0-130		88.5	%	





Blaine Tech Services 1680 Rogers Avenue San Jose, CA 95112	Project: Blaine/Chevron Project Number: Chevron 9-2960/2416 Grove, Castro Valley Project Manager: Scott Boor	Sampled: 2/1/00 Received: 2/2/00 Reported: 2/16/00
--	--	--

**Total Purgeable Hydrocarbons (C6-C12), BTEX and MTBE by DHS EPT/Quality Control  
Sequoia Analytical - San Carlos**

Analyte	Date Analyzed	Spike Level	Sample Result	QC Result	Units	Reporting Limit Recov. Limits	Recov. %	RPD Limit	RPD %	Notes*
<b>Batch: 0020027</b>			<b>Date Prepared: 2/7/00</b>			<b>Extraction Method: EPA 5030B (P/T)</b>				
<b>Blank</b>			<b>0020027-BLK1</b>							
Purgeable Hydrocarbons as Gasoline	2/7/00			ND	ug/l	50.0				
Benzene	"			ND	"	0.500				
Toluene	"			ND	"	0.500				
Ethylbenzene	"			ND	"	0.500				
Xylenes (total)	"			ND	"	0.500				
Methyl tert-butyl ether	"			ND	"	5.00				
Surrogate: a,a,a-Trifluorotoluene	"	10.0		8.43	"	70.0-130	84.3			
<b>LCS</b>			<b>0020027-BS1</b>							
Benzene	2/7/00	10.0		7.94	ug/l	70.0-130	79.4			
Toluene	"	10.0		7.45	"	70.0-130	74.5			
Ethylbenzene	"	10.0		7.63	"	70.0-130	76.3			
Xylenes (total)	"	30.0		23.1	"	70.0-130	77.0			
Surrogate: a,a,a-Trifluorotoluene	"	10.0		8.52	"	70.0-130	85.2			
<b>LCS</b>			<b>0020027-BS2</b>							
Purgeable Hydrocarbons as Gasoline	2/7/00	250		228	ug/l	70.0-130	91.2			
Surrogate: a,a,a-Trifluorotoluene	"	10.0		8.90	"	70.0-130	89.0			
<b>Matrix Spike</b>			<b>0020027-MS1 L002040-02</b>							
Benzene	2/7/00	10.0	ND	9.01	ug/l	60.0-140	90.1			
Toluene	"	10.0	ND	8.72	"	60.0-140	87.2			
Ethylbenzene	"	10.0	ND	8.81	"	60.0-140	88.1			
Xylenes (total)	"	30.0	ND	26.6	"	60.0-140	88.7			
Surrogate: a,a,a-Trifluorotoluene	"	10.0		9.22	"	70.0-130	92.2			
<b>Matrix Spike Dup</b>			<b>0020027-MSD1 L002040-02</b>							
Benzene	2/7/00	10.0	ND	8.59	ug/l	60.0-140	85.9	25.0	4.77	
Toluene	"	10.0	ND	8.04	"	60.0-140	80.4	25.0	8.11	
Ethylbenzene	"	10.0	ND	8.15	"	60.0-140	81.5	25.0	7.78	
Xylenes (total)	"	30.0	ND	24.9	"	60.0-140	83.0	25.0	6.64	
Surrogate: a,a,a-Trifluorotoluene	"	10.0		9.13	"	70.0-130	91.3			





Blaine Tech Services 1680 Rogers Avenue San Jose, CA 95112	Project: Blaine/Chevron Project Number: Chevron 9-2960/2416 Grove, Castro Valley Project Manager: Scott Boor	Sampled: 2/1/00 Received: 2/2/00 Reported: 2/16/00
--	--	--

**Notes and Definitions**

#	Note
---	------

- DET Analyte DETECTED
- ND Analyte NOT DETECTED at or above the reporting limit
- NR Not Reported
- dry Sample results reported on a dry weight basis
- Recov. Recovery
- RPD Relative Percent Difference







## CHEVRON WELL MONITORING DATA SHEET

Project #: 000201 C2	Station #:
Sampler: Jeff	Date:
Well I.D.: <del>MW</del> C-6	Well Diameter: (2) 3 4 6 8
Total Well Depth: 27.92	Depth to Water: 16.27
Depth to Free Product:	Thickness of Free Product (feet):
Referenced to: (PVC) Grade	D.O. Meter (if req'd): YSI HACH

Well Diameter	Multiplier	Well Diameter	Multiplier
2"	0.16	5"	1.02
3"	0.37	6"	1.47
4"	0.65	Other	radius <sup>2</sup> * 0.163

Purge Method: Bailer  
 Disposable Bailer  
 Middleburg  
 Electric Submersible  
 Extraction Pump  
 Other: \_\_\_\_\_

Sampling Method: Bailer  
 Disposable Bailer  
 Extraction Port  
 Other: \_\_\_\_\_

<u>1.9</u>	x	<u>3</u>	=	<u>5.6</u>	Gals.
1 Case Volume (Gals.)		Specified Volumes		Calculated Volume	

Time	Temp (°F)	pH	Cond.	Gals. Removed	Observations
1430	69.5	7.1	1555	2	
1435	69.7	7.1	1550	4	
1440	69.8	7.1	1554	6	

Did well dewater? Yes  No  Gallons actually evacuated: \_\_\_\_\_

Sampling Time: 1445      Sampling Date: 2/1/00

Sample I.D.: C-6      Laboratory: (Sequoia) CORE N. Creek Assoc. Labs

Analyzed for: (TPH-G BTEX) MTBE TPH-D Other: \_\_\_\_\_

Duplicate I.D.: \_\_\_\_\_ Analyzed for: TPH-G BTEX MTBE TPH-D Other: \_\_\_\_\_

D.O. (if req'd):	Pre-purge:	mg/L	Post-purge:	mg/L
O.R.P. (if req'd):	Pre-purge:	mV	Post-purge:	mV



# CHEVRON WELL MONITORING DATA SHEET

Project #: 000201 C2	Station #:
Sampler: Jeff	Date: 2/1/00
Well I.D.: C-7	Well Diameter: (2) 3 4 6 8
Total Well Depth: 30.12	Depth to Water: 19.13
Depth to Free Product:	Thickness of Free Product (feet):
Referenced to: (AVC) Grade	D.O. Meter (if req'd): YSI HACH

Well Diameter	Multiplier	Well Diameter	Multiplier
2"	0.16	5"	1.02
3"	0.37	6"	1.47
4"	0.65	Other	radius <sup>2</sup> * 0.163

Purge Method: Bailer  
 Disposable Bailer  
 Middleburg  
 Electric Submersible  
 Extraction Pump  
 Other: \_\_\_\_\_

Sampling Method: Bailer  
 Disposable Bailer  
 Extraction Port  
 Other: \_\_\_\_\_

1.8	x	3	=	9.3	Gals.
1 Case Volume (Gals.)		Specified Volumes		Calculated Volume	

Time	Temp (°F)	pH	Cond.	Gals. Removed	Observations
1450	68.8	7.0	1597	2	
1455	68.6	7.0	1583	4	
1458	69.0	7.1	1588	6	

Did well dewater? Yes  No  Gallons actually evacuated: \_\_\_\_\_

Sampling Time: 1500 Sampling Date: 2/1/00

Sample I.D.: C-7 Laboratory: (Sequoia) CORE N. Creek Assoc. Labs

Analyzed for: (TPH-G BTEX) MTBE TPH-D Other: \_\_\_\_\_

Duplicate I.D.: \_\_\_\_\_ Analyzed for: TPH-G BTEX MTBE TPH-D Other: \_\_\_\_\_

D.O. (if req'd):	Pre-purge:	mg/L	Post-purge:	mg/L
O.R.P. (if req'd):	Pre-purge:	mV	Post-purge:	mV