



**Mark Horne**  
Project Manager  
Marketing Business Unit

**Chevron Environmental  
Management Company**  
6101 Bollinger Canyon Road  
San Ramon, CA 94583  
Tel (925) 790-3964  
Fax (925) 549-1441  
markhorne@chevron.com

Alameda County Environmental Health (ACEH)  
1131 Harbor Bay Parkway, Suite 250  
Alameda, CA 94502-6577

Re: Chevron Service Station No. 93322  
7225 Bancroft Avenue  
Oakland, CA

**RECEIVED**

By Alameda County Environmental Health 11:51 am, Feb 05, 2016

I have reviewed the attached report titled *Fourth Quarter 2015 Groundwater Monitoring and Sampling Report*.

The information in this report is accurate to the best of my knowledge and all local Agency/Regional Board guidelines have been followed. This report was prepared by GHD Services Inc., upon whose assistance and advice I have relied.

This letter is submitted pursuant to the requirements of California Water Code Section 13267(b)(1) and the regulating implementation entitled Appendix A pertaining thereto.

I declare under penalty of perjury that the foregoing is true and correct to the best of my knowledge.

Sincerely,

A handwritten signature in blue ink that reads "Mark E. Horne".

Mark Horne  
Project Manager

Attachment: *Fourth Quarter 2015 Groundwater Monitoring and Sampling Report*



February 4, 2016

Reference No. 311806

Mr. Mark Detterman  
Alameda County Environmental Health Services  
1131 Harbor Bay Parkway, Suite 250  
Alameda, California 94502-6577

**Re: Fourth Quarter 2015  
Groundwater Monitoring and Sampling Report  
Former Chevron Service Station 93322  
7225 Bancroft Avenue  
Oakland, California  
Agency Case RO0000274**

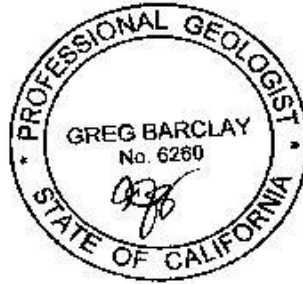
Dear Mr. Detterman:

GHD Services Inc. (GHD) is submitting this Fourth Quarter 2015 Groundwater Monitoring and Sampling Report for the site referenced above (Figure 1) on behalf of Chevron Environmental Management Company. Groundwater monitoring was performed by Blaine Tech Services (Blaine Tech) of San Jose, California and their *Fourth Quarter 2015 Monitoring* report is included as Attachment A. Current and historical groundwater monitoring and sampling data are included in Table 1 and current data are presented on Figure 2. Eurofins Lancaster Laboratory Environmental, LLCs' of Lancaster, Pennsylvania, *Analytical Results* report is included as Attachment B.

Please contact Nathan Lee at (925) 849-1003 if you have any questions or require additional information.

Cordially,

GHD



Greg Barclay, PG 6260

JG/mws/31

Encl.

Figure 1 Vicinity Map

Figure 2 Groundwater Elevation and Hydrocarbon Concentration Map

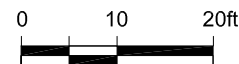
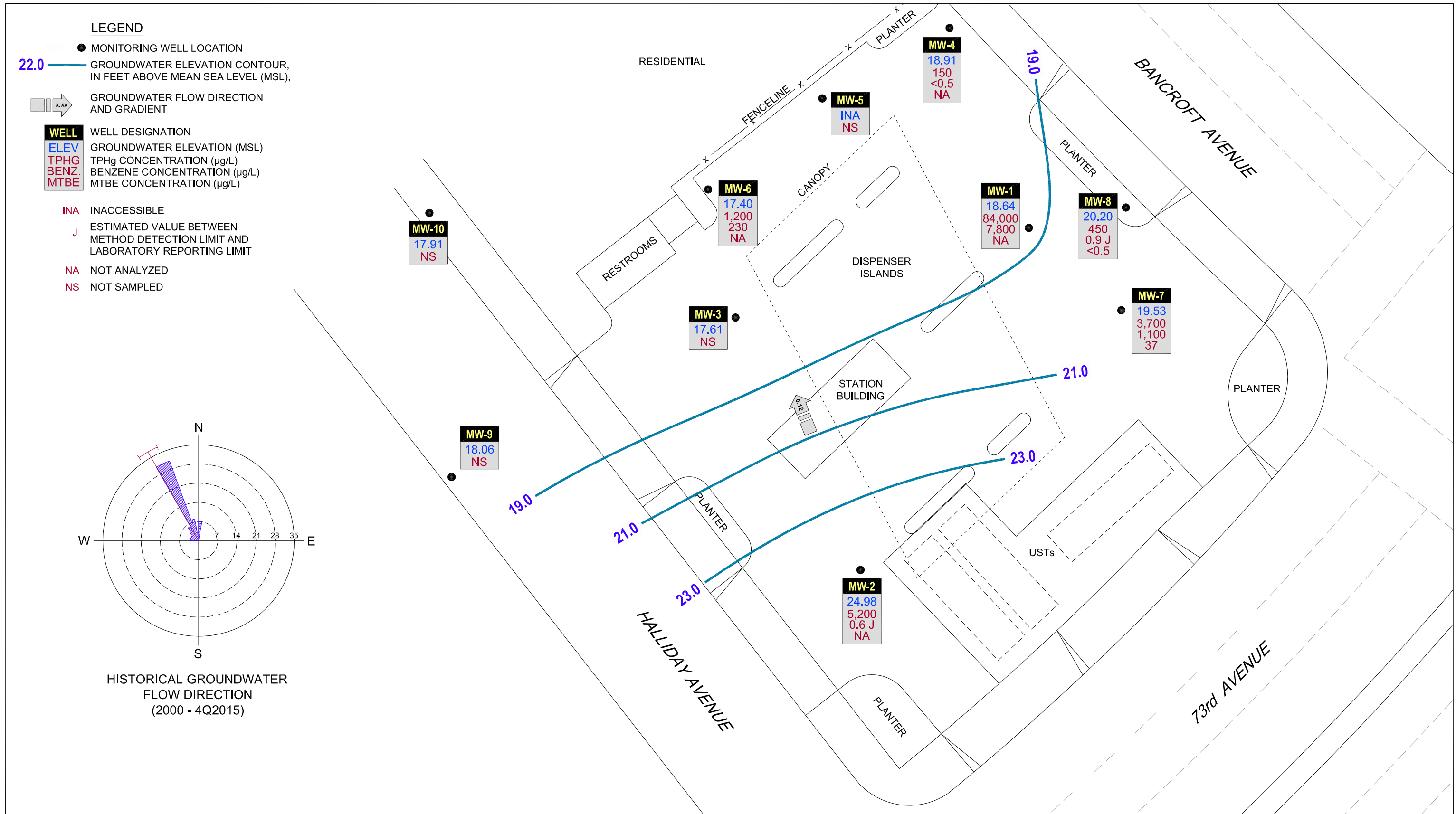
Table 1 Groundwater Monitoring and Sampling Data

Attachment A Monitoring Data Package

Attachment B Laboratory Analytical Report

cc: Mr. Mark Horne, Chevron (*electronic copy*)  
7225 Bancroft St, LP, Property Owner

# Figures

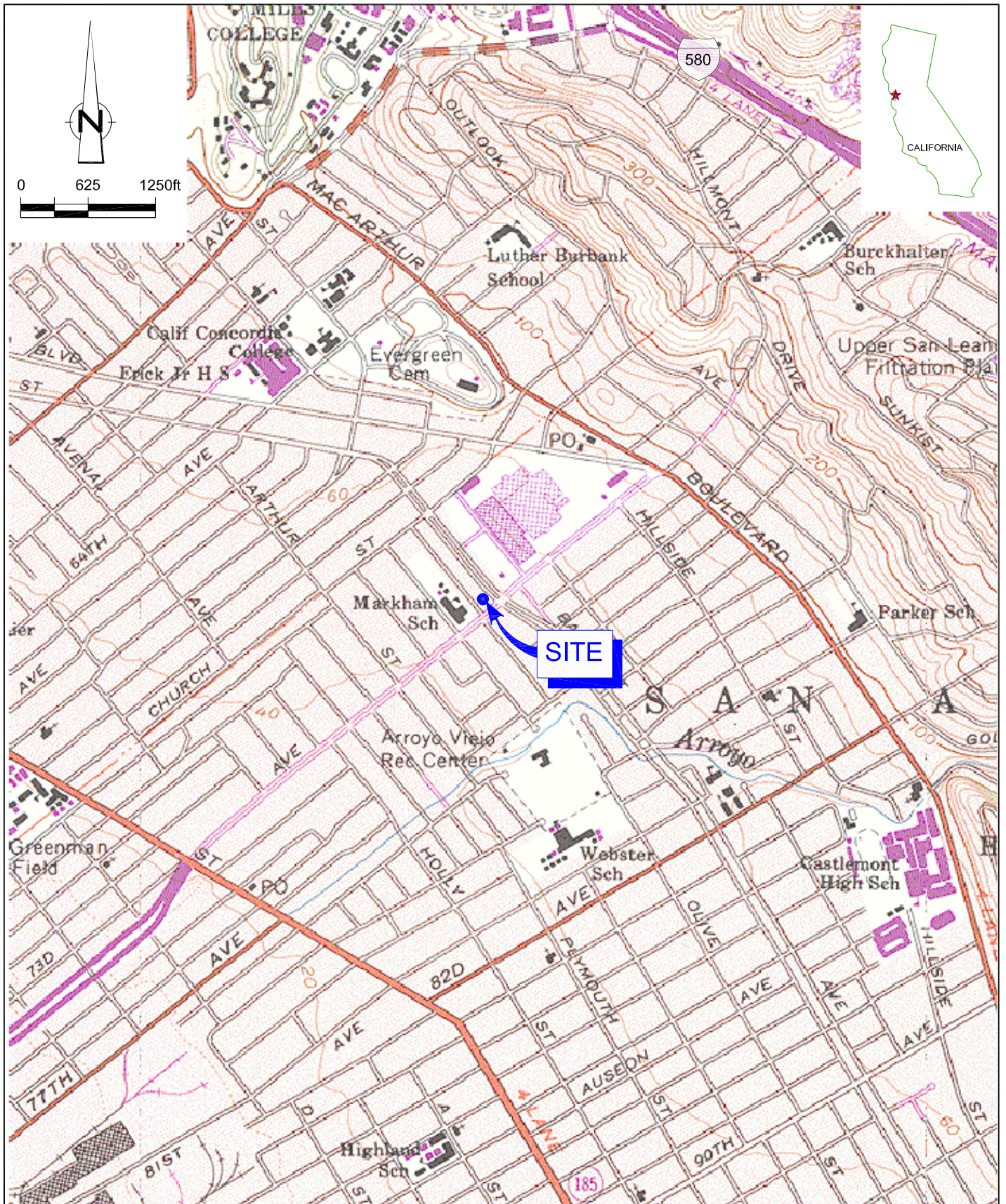


FORMER CHEVRON SERVICE STATION 93322  
 7225 BANCROFT AVENUE  
 OAKLAND, CALIFORNIA  
 GROUNDWATER ELEVATION CONTOUR AND  
 HYDROCARBON CONCENTRATION MAP - DECEMBER 29, 2015

311806-95  
 Feb 2, 2016

FIGURE 2





SOURCE: TOPO MAPS



FORMER CHEVRON SERVICE STATION 93322  
 7225 BANCROFT AVENUE  
 OAKLAND, CALIFORNIA

311806-95  
 Jan 26, 2016

VICINITY MAP

FIGURE 1



# Table

Table 1

**Groundwater Monitoring and Sampling Data  
Former Chevron Service Station 93322  
7225 Bancroft Avenue  
Oakland, California**

Location	Date	TOC	DTW	GWE	LNAPLT	LNAPL REMOVED	HYDROCARBONS		PRIMARY VOCS					ADDITIONAL VOCS					
							TPH-GRO	B	T	E	X	MTBE by SW6260	MTBE by VOC	Ethanol	TBA	DIPE	ETBE	TAME	
	Units	ft	ft	ft-amsl	ft	gal	µg/L	µg/L	µg/L	µg/L	µg/L	µg/L	µg/L	µg/L	µg/L	µg/L	µg/L	µg/L	µg/L
MW-1	02/08/1998	40.41	13.88	26.53	0.00	0.00	130,000	9,700	8,200	3,200	15,000	-	<250.0	-	-	-	-	-	-
MW-1	06/16/1998	40.41	14.23	26.18	0.00	0.00	96,000	15,000	12,000	2,600	11,000	-	1,300	-	-	-	-	-	-
MW-1	07/29/1998	40.41	17.82	22.59	0.00	0.00	370,000	19,000	14,000	5,800	15,000	-	<2,500	-	-	-	-	-	-
MW-1	08/13/1998	40.41	18.40	22.01	0.00	0.00	120,000	19,000	16,000	2,900	14,000	-	<1,000	-	-	-	-	-	-
MW-1	11/24/1998	40.41	20.80	19.61	0.00	0.00	100,000	26,000	18,000	4,000	22,000	-	2,000	-	-	-	-	-	-
MW-1	02/03/1999	40.41	17.45	22.96	0.00	0.00	110,000	27,000	16,000	3,800	22,000	-	<2.5	-	-	-	-	-	-
MW-1	06/07/1999	40.41	16.44	24.29	0.40	0.03	-	-	-	-	-	-	-	-	-	-	-	-	-
MW-1	09/07/1999	40.41	20.71	19.97	0.34	0.01	-	-	-	-	-	-	-	-	-	-	-	-	-
MW-1	10/27/1999	40.41	21.75	18.93	0.34	0.03	-	-	-	-	-	-	-	-	-	-	-	-	-
MW-1	02/08/2000	40.41	17.97	22.44	0.00	0.00	147,000	19,600	13,700	4,020	21,300	-	<2,500	-	-	-	-	-	-
MW-1	05/05/2000	40.41	16.05	24.36	0.00	0.00	150,000 <sup>2</sup>	28,000	17,000	4,400	23,000	-	<1,000	-	-	-	-	-	-
MW-1	07/28/2000	40.41	19.20	21.21	0.00	0.00	76,000 <sup>2</sup>	20,000	15,000	3,400	23,000	-	1,200	-	-	-	-	-	-
MW-1	11/26/2000	40.41	20.18	20.44	0.26	0.26 <sup>4</sup>	-	-	-	-	-	-	-	-	-	-	-	-	-
MW-1	02/09/2001	40.41	18.03	22.40	0.03	0.26 <sup>4</sup>	-	-	-	-	-	-	-	-	-	-	-	-	-
MW-1	05/11/2001	40.41	15.10	25.31	0.00	0.00	89,000 <sup>2</sup>	21,000	12,000	3,200	14,000	-	<500	-	-	-	-	-	-
MW-1	08/30/2001	40.41	20.42	20.05	0.07	0.26 <sup>4</sup>	-	-	-	-	-	-	-	-	-	-	-	-	-
MW-1	11/21/2001	40.41	20.52	20.11	0.27	0.00	-	-	-	-	-	-	-	-	-	-	-	-	-
MW-1	02/05/2002	40.41	14.63	25.79	0.01	0.00	130,000	16,000	13,000	4,200	23,000	-	<30.0	-	-	-	-	-	-
MW-1	04/01/2002	37.40	12.37	25.03	0.00	0.00	-	-	-	-	-	-	-	-	-	-	-	-	-
MW-1	08/05/2002	37.40	12.94	24.46	0.00	0.00	230,000	12,000	9,000	5,500	28,000	-	280	-	-	-	-	-	-
MW-1	11/04/2002	37.40	20.03	17.37	0.00	0.00	130,000	24,000	15,000	3,900	20,000	-	<60	-	-	-	-	-	-
MW-1	02/03/2003	37.40	14.18	23.22	0.00	0.00	100,000	13,000	8,900	3,000	15,000	-	<130.0	-	-	-	-	-	-
MW-1	05/02/2003	37.40	13.28	24.12	0.00	0.00	140,000	9,900	5,900	4,200	21,000	-	<130	-	-	-	-	-	-
MW-1	08/01/2003 <sup>7</sup>	37.40	16.82	20.58	0.00	0.00	250,000	16,000	7,300	3,700	19,000	45	-	-	-	-	-	-	-
MW-1	11/21/2003 <sup>7</sup>	37.40	18.34	19.06	0.00	0.00	110,000	18,000	9,500	3,000	17,000	<10	-	-	-	-	-	-	-
MW-1	02/10/2004 <sup>7</sup>	37.40	13.51	23.89	0.00	0.00	51,000	4,800	1,700	760	6,400	20	-	-	-	-	-	-	-
MW-1	05/11/2004 <sup>7</sup>	37.40	14.35	23.05	0.00	0.00	80,000	13,000	6,500	2,800	14,000	61	-	-	-	-	-	-	-



Table 1

**Groundwater Monitoring and Sampling Data  
Former Chevron Service Station 93322  
7225 Bancroft Avenue  
Oakland, California**

Location	Date	TOC	DTW	GWE	LNAPLT	LNAPL REMOVED	HYDROCARBONS		PRIMARY VOCS					ADDITIONAL VOCS					
							TPH-GRO	B	T	E	X	MTBE by SW6260	MTBE by VOC	Ethanol	TBA	DIPE	ETBE	TAME	
	Units	ft	ft	ft-amsl	ft	gal	µg/L	µg/L	µg/L	µg/L	µg/L	µg/L	µg/L	µg/L	µg/L	µg/L	µg/L	µg/L	µg/L
MW-1	08/10/2004 <sup>7</sup>	37.40	16.80	20.61	0.01	0.00	100,000	14,000	8,700	3,200	17,000	<25	-	-	-	-	-	-	-
MW-1	11/08/2004	37.40	15.63	21.89	0.15	1.30 <sup>4</sup>	-	-	-	-	-	-	-	-	-	-	-	-	-
MW-1	02/21/2005	37.40	11.84	25.98	0.52	0.60 <sup>4</sup>	-	-	-	-	-	-	-	-	-	-	-	-	-
MW-1	05/10/2005	37.40	11.49	26.11	0.25	1.11 <sup>4</sup>	-	-	-	-	-	-	-	-	-	-	-	-	-
MW-1	05/12/2005	37.40	14.44	22.98	0.03	1.01 <sup>4</sup>	-	-	-	-	-	-	-	-	-	-	-	-	-
MW-1	11/11/2005	37.40	18.58	19.13	0.39	0.75 <sup>4</sup>	-	-	-	-	-	-	-	-	-	-	-	-	-
MW-1	02/20/2006	37.40	12.66	25.33	0.74	0.25 <sup>4</sup>	-	-	-	-	-	-	-	-	-	-	-	-	-
MW-1	05/12/2006	37.40	10.71	26.92	0.29	0.05 <sup>4</sup>	-	-	-	-	-	-	-	-	-	-	-	-	-
MW-1	08/14/2006	37.40	15.82	21.78	0.25	0.02 <sup>4</sup>	-	-	-	-	-	-	-	-	-	-	-	-	-
MW-1	11/08/2006	37.40	18.49	19.21	0.38	0.55 <sup>4</sup>	-	-	-	-	-	-	-	-	-	-	-	-	-
MW-1	02/07/2007	37.40	15.48	21.98	0.08	0.06 <sup>10</sup>	-	-	-	-	-	-	-	-	-	-	-	-	-
MW-1	05/07/2007	37.40	4.83	32.77	0.25	0.39 <sup>4</sup>	-	-	-	-	-	-	-	-	-	-	-	-	-
MW-1	08/03/2007	37.40	18.06	19.76	0.52	0.52 <sup>4</sup>	-	-	-	-	-	-	-	-	-	-	-	-	-
MW-1	10/12/2007	37.40	19.29	18.13	0.03	0.16 <sup>4</sup>	-	-	-	-	-	-	-	-	-	-	-	-	-
MW-1	11/02/2007 <sup>7</sup>	37.40	19.18	18.22	0.00	0.00	140,000	9,800	9,500	4,100	20,000	<10	-	-	-	-	-	-	-
MW-1	12/07/2007 <sup>7</sup>	37.40	19.06	18.34	0.00	0.00	130,000	11,000	11,000	3,800	20,000	10	-	-	-	-	-	-	-
MW-1	02/01/2008 <sup>7</sup>	37.40	13.45	23.95	0.00	0.00	61,000	2,200	2,000	2,000	10,000	11	-	-	-	-	-	-	-
MW-1	05/09/2008 <sup>7</sup>	37.40	15.10	22.30	0.00	0.00	81,000	13,000	10,000	3,500	18,000	30	-	-	-	-	-	-	-
MW-1	08/22/2008 <sup>7</sup>	37.40	18.63	18.77	0.00	0.00	210,000	13,000	8,800	7,300	37,000	<50	-	-	-	-	-	-	-
MW-1	11/26/2008 <sup>7</sup>	37.40	20.09	17.31	0.00	0.00	68,000	15,000	9,100	3,600	17,000	<25	-	-	-	-	-	-	-
MW-1	05/20/2009	37.40	19.48	17.92	0.00	0.00	58,000	11,000	12,000	15,000	59,000	<50	-	<5,000	-	-	-	-	-
MW-1	08/26/2009	37.40	19.06	18.34	0.00	0.00	340,000	17,000	13,000	8,000	43,000	<25	-	<2,500	-	-	-	-	-
MW-1	11/12/2009	37.40	17.72	19.68	0.00	0.00	140,000	16,000	10,000	4,400	23,000	<10	-	<1,000	-	-	-	-	-
MW-1	02/01/2010	37.40	12.80	24.60	0.00	0.00	110,000	7,100	6,100	4,000	20,000	7 J	-	<500	-	-	-	-	-
MW-1	05/17/2010	37.40	11.14	26.26	0.00	0.00	75,000	7,200	3,600	2,700	12,000	31	-	<500	-	-	-	-	-
MW-1	08/26/2010	37.40	15.40	22.00	0.00	0.00	96,000	12,000	5,400	3,600	16,000	59	-	<500	-	-	-	-	-
MW-1	11/11/2010	37.40	17.70	19.70	0.00	0.00	120,000	13,000	6,600	2,700	13,000	26	-	<1,000	-	-	-	-	-

**Table 1**  
**Groundwater Monitoring and Sampling Data**  
**Former Chevron Service Station 93322**  
**7225 Bancroft Avenue**  
**Oakland, California**

Location	Date	TOC	DTW	GWE	LNAPLT	LNAPL REMOVED	HYDROCARBONS		PRIMARY VOCS					ADDITIONAL VOCS					
							TPH-GRO	B	T	E	X	MTBE by SW6260	MTBE by VOC	Ethanol	TBA	DIPE	ETBE	TAME	
	Units	ft	ft	ft-amsl	ft	gal	µg/L	µg/L	µg/L	µg/L	µg/L	µg/L	µg/L	µg/L	µg/L	µg/L	µg/L	µg/L	µg/L
MW-1	02/10/2011	37.40	13.03	24.37	0.00	0.00	52,000	7,100	3,800	2,800	12,000	25	-	<1,000	-	-	-	-	-
MW-1	06/17/2011	37.40	12.35	25.05	0.00	0.00	30,000	3,600	940	1,000	3,200	52	-	<500	-	-	-	-	-
MW-1	09/08/2011	37.40	15.68	21.72	0.00	0.00	98,000	13,000	6,600	3,700	14,000	59	-	<1,000	-	-	-	-	-
MW-1	12/16/2011	37.40	16.47	20.93	0.00	0.00	140,000	14,000	6,500	2,900	12,000	47 J	-	<2,500	-	-	-	-	-
MW-1	03/02/2012	37.40	16.55	20.85	0.00	0.00	130,000	14,000	7,400	3,100	14,000	31	-	<1,000	-	-	-	-	-
MW-1	06/08/2012	37.40	14.11	23.29	0.00	0.00	120,000	8,900	2,900	2,600	11,000	86	-	<500	-	-	-	-	-
MW-1	09/14/2012	37.40	18.10	19.30	0.00	0.00	280,000	18,000	8,200	4,600	22,000	74	-	<2,500	110 J	<25	<25	<25	<25
MW-1	12/21/2012	37.40	13.61	23.79	0.00	0.00	120,000	12,000	6,800	3,000	15,000	<100	-	<10,000	-	-	-	-	-
MW-1	04/01/2013	37.40	15.63	21.77	0.00	0.00	120,000	15,000	8,200	4,400	18,000	77	-	<250	-	-	-	-	-
MW-1	6/28/2013	37.40	17.34	20.06	0.00	0.00	130,000	16,000	10,000	3,500	17,000	34	-	<500	-	-	-	-	-
MW-1	9/20/2013	37.40	19.21	18.19	0.00	0.00	130,000	19,000	12,000	4,000	19,000	27	-	<1,000	-	-	-	-	-
MW-1	12/30/2013	37.40	20.72	16.68	0.00	0.00	140,000	18,000	13,000	6,600	34,000	21	-	<1,000	-	-	-	-	-
MW-1	03/31/2014	37.40	15.78	21.62	0.00	0.00	130,000	17,000	8,600	3,500	17,000	<25	-	<2,500	-	-	-	-	-
MW-1	06/30/2014	37.40	17.34	20.06	0.00	0.00	90,000	12,000	7,400	2,800	14,000	21	-	<1,000	-	-	-	-	-
MW-1	09/22/2014	37.40	20.31	17.09	0.00	0.00	120,000	14,000	9,600	4,000	19,000	28 J	-	<2,500	-	-	-	-	-
MW-1	12/23/2014	37.40	13.75	23.65	0.00	0.00	93,000	8,900	5,700	3,400	15,000	11 J	-	<1,000	-	-	-	-	-
MW-1	03/05/2015	37.40	15.96	21.44	0.00	0.00	110,000	9,600	4,100	4,000	19,000	54	-	<100	-	-	-	-	-
MW-1	06/23/2015	37.40	18.61	18.79	0.00	0.00	100,000	14,000	8,700	4,100	20,000	<50	-	<5,000	<200	<50	<50	<50	<50
MW-1	09/23/2015 <sup>15,**</sup>	37.40	21.46	16.01	0.09	0.00	-	-	-	-	-	-	-	-	-	-	-	-	-
<b>MW-1</b>	<b>12/29/2015</b>	<b>37.40</b>	<b>18.76</b>	<b>18.64</b>	<b>0.00</b>	<b>0.00</b>	<b>84,000</b>	<b>7,800</b>	<b>5,200</b>	<b>2,200</b>	<b>10,000</b>	-	-	<b>&lt;2,500</b>	-	-	-	-	-
MW-2	02/08/1998	38.73	7.60	31.13	0.00	0.00	24,000	130	170	450	1,900	-	2,300	-	-	-	-	-	-
MW-2	06/16/1998	38.73	9.12	29.61	0.00	0.00	8,900	31	46	310	1,100	-	260	-	-	-	-	-	-
MW-2	07/29/1998	38.73	11.67	27.06	0.00	0.00	7,600	15	21	150	480	-	82	-	-	-	-	-	-
MW-2	08/13/1998	38.73	12.41	26.32	0.00	0.00	14,000	26	80	500	2,100	-	32	-	-	-	-	-	-
MW-2	11/24/1998	38.73	15.63	23.10	0.00	0.00	37,000	63	220	1,300	7,100	-	770	-	-	-	-	-	-
MW-2	02/03/1999	38.73	11.57	27.16	0.00	0.00	16,000	140	110	850	3,100	-	900	-	-	-	-	-	-

Table 1

**Groundwater Monitoring and Sampling Data  
Former Chevron Service Station 93322  
7225 Bancroft Avenue  
Oakland, California**

Location	Date	TOC	DTW	GWE	LNAPLT	LNAPL REMOVED	HYDROCARBONS		PRIMARY VOCS					ADDITIONAL VOCS					
							TPH-GRO	B	T	E	X	MTBE by SW6260	MTBE by VOC	Ethanol	TBA	DIPE	ETBE	TAME	
	Units	ft	ft	ft-amsl	ft	gal	µg/L	µg/L	µg/L	µg/L	µg/L	µg/L	µg/L	µg/L	µg/L	µg/L	µg/L	µg/L	µg/L
MW-2	06/07/1999	38.73	10.95	27.78	0.00	0.00	4,300	<10	<10	120	260	-	160	-	-	-	-	-	-
MW-2	09/07/1999	38.73	12.73	26.00	0.00	0.00	10,700	50.5	<25	297	1,020	-	<250	-	-	-	-	-	-
MW-2	10/27/1999	38.73	12.71	26.02	0.00	0.00	7,240	53.8	31.9	234	654	-	448	-	-	-	-	-	-
MW-2	02/08/2000	38.73	10.14	28.59	0.00	0.00	10,100	42.9	18.4	424	1,480	-	206	-	-	-	-	-	-
MW-2	05/05/2000	38.73	10.12	28.61	0.00	0.00	7,800 <sup>2</sup>	34	22	320	1,100	-	170	-	-	-	-	-	-
MW-2	07/28/2000	38.73	12.57	26.16	0.00	0.00	6,700 <sup>2</sup>	40	13	490	540	-	190	-	-	-	-	-	-
MW-2	11/26/2000	38.73	11.90	26.83	0.00	0.00	8,200 <sup>2</sup>	21	9.5	400	1,100	-	120	-	-	-	-	-	-
MW-2	02/09/2001	38.73	12.20	26.53	0.00	0.00	11,200 <sup>3</sup>	<50.0	<50.0	629	1,380	-	282	-	-	-	-	-	-
MW-2	05/11/2001	38.73	8.98	29.75	0.00	0.00	6,800 <sup>2</sup>	39	19	370	1,100	-	67	-	-	-	-	-	-
MW-2	08/30/2001	38.73	12.90	25.83	0.00	0.00	17,000	67	<25	750	2,100	-	360	-	-	-	-	-	-
MW-2	11/21/2001	38.73	13.12	25.61	0.00	0.00	3,500	14	<5.0	100	51	-	610	-	-	-	-	-	-
MW-2	02/05/2002	38.73	8.35	30.38	0.00	0.00	10,000	5.5	<10	330	960	-	63	-	-	-	-	-	-
MW-2	04/01/2002	35.72	7.81	27.91	0.00	0.00	-	-	-	-	-	-	-	-	-	-	-	-	-
MW-2	08/05/2002	35.72	15.91	19.81	0.00	0.00	8,800	18	8.2	220	630	-	220	-	-	-	-	-	-
MW-2	11/04/2002	35.72	14.14	21.58	0.00	0.00	14,000	28	10	670	1,600	-	440	-	-	-	-	-	-
MW-2	02/03/2003	35.72	10.00	25.72	0.00	0.00	7,200	6.2	2.7	140	430	-	50	-	-	-	-	-	-
MW-2	05/02/2003	35.72	8.31	27.41	0.00	0.00	12,000	<20	3.9	350	1,500	-	150	-	-	-	-	-	-
MW-2	08/01/2003 <sup>7</sup>	35.72	12.66	23.06	0.00	0.00	12,000	14	4	330	730	140	-	-	-	-	-	-	-
MW-2	11/21/2003 <sup>7</sup>	35.72	12.67	23.05	0.00	0.00	15,000	13	4	400	1,500	100	-	-	-	-	-	-	-
MW-2	02/10/2004 <sup>7</sup>	35.72	5.20	30.52	0.00	0.00	17,000	9	3	420	1,600	72	-	-	-	-	-	-	-
MW-2	05/11/2004 <sup>7</sup>	35.72	9.83	25.89	0.00	0.00	4,800	1	0.6	140	440	81	-	-	-	-	-	-	-
MW-2	08/10/2004 <sup>7</sup>	35.72	11.81	23.91	0.00	0.00	11,000	8	1	340	1,100	35	-	-	-	-	-	-	-
MW-2	11/08/2004 <sup>7</sup>	35.72	11.59	24.13	0.00	0.00	11,000	6	2	260	810	25	-	-	-	-	-	-	-
MW-2	01/11/2005	-	-	-	-	-	4,500	4	1	120	310	7	-	-	-	-	-	-	-
MW-2	02/21/2005 <sup>7</sup>	35.72	7.74	27.98	0.00	0.00	16,000	5	2	500	1,700	10	-	-	-	-	-	-	-
MW-2	05/10/2005 <sup>7</sup>	35.72	8.11	27.61	0.00	0.00	8,400	3	<1	290	750	6	-	-	-	-	-	-	-
MW-2	08/12/2005 <sup>7</sup>	35.72	11.32	24.40	0.00	0.00	5,800	4	0.7	150	370	30	-	-	-	-	-	-	-

Table 1

**Groundwater Monitoring and Sampling Data  
Former Chevron Service Station 93322  
7225 Bancroft Avenue  
Oakland, California**

Location	Date	TOC	DTW	GWE	LNAPLT	LNAPL REMOVED	HYDROCARBONS		PRIMARY VOCS					ADDITIONAL VOCS						
							TPH-GRO	B	T	E	X	MTBE by SW6260	MTBE by VOC	Ethanol	TBA	DIPE	ETBE	TAME		
	Units	ft	ft	ft-amsl	ft	gal	µg/L	µg/L	µg/L	µg/L	µg/L	µg/L	µg/L	µg/L	µg/L	µg/L	µg/L	µg/L	µg/L	
MW-2	11/11/2005 <sup>7</sup>	35.72	12.58	23.14	0.00	0.00	-	-	-	-	-	-	-	-	-	-	-	-	-	-
MW-2	02/20/2006 <sup>7</sup>	35.72	7.41	28.31	0.00	0.00	5,700	1	<0.5	190	380	0.7	-	-	-	-	-	-	-	-
MW-2	05/12/2006 <sup>7</sup>	35.72	7.02	28.70	0.00	0.00	9,100	2	<0.5	210	440	1	-	-	-	-	-	-	-	-
MW-2	08/14/2006 <sup>7</sup>	35.72	11.38	24.34	0.00	0.00	2,400	2	<0.5	42	98	20	-	-	-	-	-	-	-	-
MW-2	11/08/2006 <sup>7</sup>	35.72	13.42	22.30	0.00	0.00	5,700	4	0.9	87	190	7	-	-	-	-	-	-	-	-
MW-2	02/07/2007 <sup>7</sup>	35.72	11.98	23.74	0.00	0.00	5,500	9	2	85	120	7	-	-	-	-	-	-	-	-
MW-2	05/07/2007 <sup>7</sup>	35.72	11.22	24.50	0.00	0.00	8,700	1	<0.5	150	330	5	-	-	-	-	-	-	-	-
MW-2	08/03/2007 <sup>7</sup>	35.72	17.19	18.53	0.00	0.00	2,600	<0.5	<0.5	10	28	2	-	-	-	-	-	-	-	-
MW-2	10/12/2007 <sup>7</sup>	35.72	14.89	20.83	0.00	0.00	9,300	7	0.6	100	120	4	-	-	-	-	-	-	-	-
MW-2	11/02/2007 <sup>7</sup>	35.72	15.58	20.14	0.00	0.00	11,000	3	0.7	220	590	2	-	-	-	-	-	-	-	-
MW-2	12/07/2007 <sup>7</sup>	35.72	19.29	16.43	0.00	0.00	9,500	3	<1	210	480	2	-	-	-	-	-	-	-	-
MW-2	02/01/2008 <sup>7</sup>	35.72	8.76	26.96	0.00	0.00	8,100	2	0.7	190	440	4	-	-	-	-	-	-	-	-
MW-2	05/09/2008 <sup>7</sup>	35.72	11.22	24.50	0.00	0.00	4,000	1	<0.5	98	110	3	-	-	-	-	-	-	-	-
MW-2	08/22/2008 <sup>7</sup>	35.72	13.87	21.85	0.00	0.00	9,600 <sup>12</sup>	1	<0.5	230	360	0.9	-	-	-	-	-	-	-	-
MW-2	11/26/2008 <sup>7</sup>	35.72	17.48	18.24	0.00	0.00	13,000	9	1	340	570	3	-	-	-	-	-	-	-	-
MW-2	05/20/2009	35.72	10.70	25.02	0.00	0.00	12,000	3	<1	250	290	2 J	-	<130	-	-	-	-	-	-
MW-2	08/26/2009	35.72	12.98	22.74	0.00	0.00	-	-	-	-	-	-	-	-	-	-	-	-	-	-
MW-2	11/12/2009	35.72	12.13	23.59	0.00	0.00	14,000	3	0.8 J	180	250	13	-	<50	-	-	-	-	-	-
MW-2	05/17/2010	35.72	11.96	23.76	0.00	0.00	3,300	<0.5	<0.5	36	34	3	-	<50	-	-	-	-	-	-
MW-2	08/26/2010 <sup>11</sup>	35.72	12.10	23.62	0.00	0.00	-	-	-	-	-	-	-	-	-	-	-	-	-	-
MW-2	11/11/2010	35.72	13.72	22.00	0.00	0.00	9,000	6	1 J	61	30	5	-	<50	-	-	-	-	-	-
MW-2	02/10/2011 <sup>13</sup>	35.72	9.46	26.26	0.00	0.00	-	-	-	-	-	-	-	-	-	-	-	-	-	-
MW-2	06/17/2011	35.72	8.68	27.04	0.00	0.00	9,300	3	<1	92	55	4	-	<100	-	-	-	-	-	-
MW-2	09/08/2011	35.72	9.69	26.03	0.00	0.00	-	-	-	-	-	-	-	-	-	-	-	-	-	-
MW-2	12/16/2011	35.72	12.18	23.54	0.00	0.00	5,700	1	<0.5	36	19	<0.5	-	<50	-	-	-	-	-	-
MW-2	03/02/2012 <sup>13</sup>	35.72	12.09	23.63	0.00	0.00	-	-	-	-	-	-	-	-	-	-	-	-	-	-
MW-2	06/08/2012	35.72	11.08	24.64	0.00	0.00	5,600	<5	<5	48	24	<5	-	<500	-	-	-	-	-	-

Table 1

**Groundwater Monitoring and Sampling Data  
Former Chevron Service Station 93322  
7225 Bancroft Avenue  
Oakland, California**

Location	Date	TOC	DTW	GWE	LNAPLT	LNAPL REMOVED	HYDROCARBONS		PRIMARY VOCS					ADDITIONAL VOCS					
							TPH-GRO	B	T	E	X	MTBE by SW6260	MTBE by VOC	Ethanol	TBA	DIPE	ETBE	TAME	
	Units	ft	ft	ft-amsl	ft	gal	µg/L	µg/L	µg/L	µg/L	µg/L	µg/L	µg/L	µg/L	µg/L	µg/L	µg/L	µg/L	µg/L
MW-2	09/14/2012 <sup>13</sup>	35.72	13.57	22.15	0.00	0.00	-	-	-	-	-	-	-	-	-	-	-	-	-
MW-2	12/21/2012	35.72	8.52	27.20	0.00	0.00	3,100	<5	<5	23	12	<5	-	<500	-	-	-	-	-
MW-2	04/01/2013 <sup>13</sup>	35.72	11.90	23.82	0.00	0.00	-	-	-	-	-	-	-	-	-	-	-	-	-
MW-2	06/28/2013	35.72	13.61	22.11	0.00	0.00	6,700	2	<0.5	36	9	<0.5	-	<50	-	-	-	-	-
MW-2	09/20/2013 <sup>13</sup>	35.72	14.02	21.70	0.00	0.00	-	-	-	-	-	-	-	-	-	-	-	-	-
MW-2	12/30/2013	35.72	14.68	21.04	0.00	0.00	7,700	4	0.8 J	31	6	0.7 J	-	<50	-	-	-	-	-
MW-2	03/31/2014 <sup>13</sup>	35.72	11.59	24.13	0.00	0.00	-	-	-	-	-	-	-	-	-	-	-	-	-
MW-2	06/30/2014	35.72	13.12	22.60	0.00	0.00	8,200	2	0.6 J	59	9	1	-	<50	-	-	-	-	-
MW-2	09/22/2014 <sup>13</sup>	35.72	15.20	20.52	0.00	0.00	-	-	-	-	-	-	-	-	-	-	-	-	-
MW-2	12/23/2014	35.72	7.90	27.82	0.00	0.00	4,600	0.8 J	<0.5	20	4	2	-	<50	-	-	-	-	-
MW-2	03/05/2015 <sup>13</sup>	35.72	10.70	25.02	0.00	0.00	-	-	-	-	-	-	-	-	-	-	-	-	-
MW-2	06/23/2015	35.72	12.80	22.92	0.00	0.00	8,400	<3	<3	60	7	<3	-	<250	<10	<3	<3	<3	<3
MW-2	09/23/2015 <sup>13</sup>	35.72	15.42	20.30	0.00	0.00	-	-	-	-	-	-	-	-	-	-	-	-	-
<b>MW-2</b>	<b>12/29/2015</b>	<b>35.72</b>	<b>10.74</b>	<b>24.98</b>	<b>0.00</b>	<b>0.00</b>	<b>5,200</b>	<b>0.6 J</b>	<b>&lt;0.5</b>	<b>15</b>	<b>3</b>	<b>-</b>	<b>-</b>	<b>&lt;50</b>	<b>-</b>	<b>-</b>	<b>-</b>	<b>-</b>	<b>-</b>
MW-3	02/08/1998	39.51	14.60	24.91	0.00	0.00	94,000	12,000	4,400	2,000	10,000	-	8,000	-	-	-	-	-	-
MW-3	06/16/1998	39.51	13.98	25.53	0.00	0.00	38,000	5,600	1,400	1,200	4,700	-	4,600 <sup>1</sup> /6,300	-	-	-	-	-	-
MW-3	07/29/1998	39.51	17.37	22.14	0.00	0.00	58,000	4,100	700	1,300	4,200	-	4,100	-	-	-	-	-	-
MW-3	08/13/1998	39.51	18.22	21.29	0.00	0.00	43,000	6,800	1,900	1,600	6,800	-	2,300	-	-	-	-	-	-
MW-3	11/24/1998	39.51	20.45	19.06	0.00	0.00	40,000	5,000	800	1,600	6,800	-	6,000/4,400 <sup>1</sup>	-	-	-	-	-	-
MW-3	02/03/1999	39.51	17.48	22.03	0.00	0.00	47,000	7,100	1,600	1,900	9,000	-	5,000	-	-	-	-	-	-
MW-3	06/07/1999	39.51	15.75	23.76	0.00	0.00	27,000	2,500	540	1,200	3,900	-	2,800	-	-	-	-	-	-
MW-3	09/07/1999	39.51	19.71	19.80	0.00	0.00	44,000	3,930	1,170	1,760	7,130	-	3,440	-	-	-	-	-	-
MW-3	10/27/1999	39.51	20.42	19.09	0.00	0.00	28,200	2,030	620	1,260	5,080	-	1,710	-	-	-	-	-	-
MW-3	02/08/2000	39.51	17.75	21.76	0.00	0.00	25,300	2,000	668	1,210	5,330	-	1,760	-	-	-	-	-	-
MW-3	05/05/2000	39.51	15.64	23.87	0.00	0.00	27,000 <sup>2</sup>	2,600	960	1,500	5,200	-	2,500	-	-	-	-	-	-
MW-3	07/28/2000	39.51	18.23	21.28	0.00	0.00	7,400 <sup>2</sup>	950	360	840	3,200	-	1,700	-	-	-	-	-	-



Table 1

**Groundwater Monitoring and Sampling Data  
Former Chevron Service Station 93322  
7225 Bancroft Avenue  
Oakland, California**

Location	Date	TOC	DTW	GWE	LNAPLT	LNAPL REMOVED	HYDROCARBONS		PRIMARY VOCS					ADDITIONAL VOCS					
							TPH-GRO	B	T	E	X	MTBE by SW6260	MTBE by VOC	Ethanol	TBA	DIPE	ETBE	TAME	
	Units	ft	ft	ft-amsl	ft	gal	µg/L	µg/L	µg/L	µg/L	µg/L	µg/L	µg/L	µg/L	µg/L	µg/L	µg/L	µg/L	µg/L
MW-3	11/26/2000	39.51	19.38	20.13	0.00	0.00	20,000 <sup>2</sup>	1,800	690	1,400	5,500	-	1,600	-	-	-	-	-	-
MW-3	02/09/2001	39.51	17.72	21.79	0.00	0.00	31,200 <sup>3</sup>	1,980	<50.0	1,770	7,220	-	2,170	-	-	-	-	-	-
MW-3	05/11/2001	39.51	14.65	24.86	0.00	0.00	18,000 <sup>2</sup>	3,000	780	1,600	5,500	-	1,800	-	-	-	-	-	-
MW-3	08/30/2001	39.51	19.35	20.16	0.00	0.00	9,400	570	180	610	1,900	-	880	-	-	-	-	-	-
MW-3	11/21/2001	39.51	20.04	19.47	0.00	0.00	29,000	1,100	450	1,500	6,100	-	1,200	-	-	-	-	-	-
MW-3	02/05/2002	39.51	14.09	25.42	0.00	0.00	16,000	820	210	830	2,400	-	1,100	-	-	-	-	-	-
MW-3	04/01/2002	36.53	12.21	24.32	0.00	0.00	-	-	-	-	-	-	-	-	-	-	-	-	-
MW-3	08/05/2002	36.53	14.31	22.22	0.00	0.00	11,000	310	92	380	820	-	830	-	-	-	-	-	-
MW-3	11/04/2002	36.53	19.03	17.50	0.00	0.00	32,000	1,900	540	1,800	5,900	-	1,500	-	-	-	-	-	-
MW-3	02/03/2003	36.53	13.95	22.58	0.00	0.00	19,000	1,100	240	920	2,900	-	1,100	-	-	-	-	-	-
MW-3	05/02/2003	36.53	13.07	23.46	0.00	0.00	18,000	1,200	270	1,100	2,500	-	1,400	-	-	-	-	-	-
MW-3	08/01/2003 <sup>7</sup>	36.53	16.31	20.22	0.00	0.00	7,700	300	79	410	820	780	-	-	-	-	-	-	-
MW-3	11/21/2003 <sup>7</sup>	36.53	17.89	18.64	0.00	0.00	7,600	270	100	470	1,300	700	-	-	-	-	-	-	-
MW-3	02/10/2004 <sup>7</sup>	36.53	13.06	23.47	0.00	0.00	3,800	250	28	170	300	650	-	-	-	-	-	-	-
MW-3	05/11/2004 <sup>7</sup>	36.53	13.73	22.80	0.00	0.00	1,200	60	9	76	62	530	-	-	-	-	-	-	-
MW-3	08/10/2004 <sup>7</sup>	36.53	16.09	20.44	0.00	0.00	1,600	70	9	86	62	500	-	-	-	-	-	-	-
MW-3	11/08/2004 <sup>7</sup>	36.53	15.11	21.42	0.00	0.00	4,800	280	37	260	400	760	-	-	-	-	-	-	-
MW-3	02/21/2005 <sup>7</sup>	36.53	11.45	25.08	0.00	0.00	450	0.8	<0.5	0.7	<0.5	200	-	-	-	-	-	-	-
MW-3	05/10/2005 <sup>7</sup>	36.53	10.26	26.27	0.00	0.00	220	<0.5	<0.5	<0.5	<0.5	250	-	-	-	-	-	-	-
MW-3	08/12/2005 <sup>7</sup>	36.53	16.42	20.11	0.00	0.00	2,800	94	32	150	390	370	-	-	-	-	-	-	-
MW-3	11/11/2005 <sup>7</sup>	36.53	17.59	18.94	0.00	0.00	3,800	140	46	230	430	440	-	-	-	-	-	-	-
MW-3	02/20/2006 <sup>7</sup>	36.53	11.92	24.61	0.00	0.00	390	4	0.9	5	4	290	-	-	-	-	-	-	-
MW-3	05/12/2006 <sup>7</sup>	36.53	9.38	27.15	0.00	0.00	1,100	2	<0.5	3	2	91	-	-	-	-	-	-	-
MW-3	08/14/2006 <sup>7</sup>	36.53	14.68	21.85	0.00	0.00	170	<0.5	<0.5	<0.5	0.8	21	-	-	-	-	-	-	-
MW-3	11/08/2006 <sup>7</sup>	36.53	17.43	19.10	0.00	0.00	1,900	83	17	120	130	100	-	-	-	-	-	-	-
MW-3	02/07/2007 <sup>7</sup>	36.53	15.07	21.46	0.00	0.00	7,400	340	42	310	530	170	-	-	-	-	-	-	-
MW-3	05/07/2007 <sup>7</sup>	36.53	13.32	23.21	0.00	0.00	1,200	7	<0.5	5	6	17	-	-	-	-	-	-	-

Table 1

**Groundwater Monitoring and Sampling Data  
Former Chevron Service Station 93322  
7225 Bancroft Avenue  
Oakland, California**

Location	Date	TOC	DTW	GWE	LNAPLT	LNAPL REMOVED	HYDROCARBONS		PRIMARY VOCS					ADDITIONAL VOCS					
							TPH-GRO	B	T	E	X	MTBE by SW6260	MTBE by VOC	Ethanol	TBA	DIPE	ETBE	TAME	
	Units	ft	ft	ft-amsl	ft	gal	µg/L	µg/L	µg/L	µg/L	µg/L	µg/L	µg/L	µg/L	µg/L	µg/L	µg/L	µg/L	µg/L
MW-3	08/03/2007 <sup>7</sup>	36.53	17.05	19.48	0.00	0.00	740	44	2	12	9	77	-	-	-	-	-	-	-
MW-3	10/12/2007 <sup>7</sup>	36.53	18.70	17.83	0.00	0.00	5,800	250	28	240	290	170	-	-	-	-	-	-	-
MW-3	11/02/2007 <sup>7</sup>	36.53	18.81	17.72	0.00	0.00	2,400	160	8	33	19	140	-	-	-	-	-	-	-
MW-3	12/07/2007 <sup>7</sup>	36.53	18.65	17.88	0.00	0.00	2,100	180	11	41	33	160	-	-	-	-	-	-	-
MW-3	02/01/2008 <sup>7</sup>	36.53	14.59	21.94	0.00	0.00	3,600	570	45	81	140	180	-	-	-	-	-	-	-
MW-3	05/09/2008 <sup>7</sup>	36.53	14.75	21.78	0.00	0.00	460	49	3	5	2	35	-	-	-	-	-	-	-
MW-3	08/22/2008 <sup>7</sup>	36.53	17.98	18.55	0.00	0.00	5,400	200	16	160	150	84	-	-	-	-	-	-	-
MW-3	11/26/2008 <sup>7</sup>	36.53	19.41	17.12	0.00	0.00	2,600	80	4	20	7	55	-	-	-	-	-	-	-
MW-3	05/20/2009	36.53	14.50	22.03	0.00	0.00	6,600	510	33	200	170	130	-	<50	-	-	-	-	-
MW-3	08/26/2009	36.53	18.84	17.69	0.00	0.00	7,900	290	18	180	110	120	-	<50	-	-	-	-	-
MW-3	02/01/2010	36.53	13.10	23.43	0.00	0.00	9,700	1,600	65	230	220	260	-	<250	-	-	-	-	-
MW-3	08/26/2010	36.53	14.90	21.63	0.00	0.00	15,000	1,400	84	670	710	210	-	<100	-	-	-	-	-
MW-3	11/11/2010 <sup>11</sup>	36.53	17.08	19.45	0.00	0.00	-	-	-	-	-	-	-	-	-	-	-	-	-
MW-3	02/10/2011	36.53	12.88	23.65	0.00	0.00	6,700	710	35	270	230	130	-	<100	-	-	-	-	-
MW-3	06/17/2011 <sup>11</sup>	36.53	-	-	-	-	-	-	-	-	-	-	-	-	-	-	-	-	-
MW-3	09/08/2011 <sup>11</sup>	36.53	14.93	21.60	0.00	0.00	7,700	490	29	260	190	96	-	<500	-	-	-	-	-
MW-3	12/16/2011 <sup>11</sup>	36.53	16.06	20.47	0.00	0.00	-	-	-	-	-	-	-	-	-	-	-	-	-
MW-3	03/02/2012	36.53	15.98	20.55	0.00	0.00	7,500	490	28	240	150	89	-	<500	-	-	-	-	-
MW-3	06/08/2012 <sup>11</sup>	36.53	13.52	23.01	0.00	0.00	-	-	-	-	-	-	-	-	-	-	-	-	-
MW-3	09/14/2012	36.53	17.24	19.29	0.00	0.00	7,600	330	15	140	54	63	-	<500	110	<5	<5	16	-
MW-3	12/21/2012 <sup>11</sup>	36.53	13.32	23.21	0.00	0.00	-	-	-	-	-	-	-	-	-	-	-	-	-
MW-3	04/01/2013	36.53	15.01	21.52	0.00	0.00	8,000	490	27	230	140	73	-	<50	-	-	-	-	-
MW-3	06/28/2013 <sup>11</sup>	36.53	16.72	19.81	0.00	0.00	-	-	-	-	-	-	-	-	-	-	-	-	-
MW-3	09/20/2013	36.53	18.55	17.98	0.00	0.00	11,000	610	31	270	140	81	-	<50	-	-	-	-	-
MW-3	12/30/2013 <sup>13</sup>	36.53	19.41	17.12	0.00	0.00	-	-	-	-	-	-	-	-	-	-	-	-	-
MW-3	03/31/2014	36.53	15.81	20.72	0.00	0.00	13,000	1,100	50	350	240	170	-	<100	-	-	-	-	-
MW-3	06/30/2014 <sup>13</sup>	36.53	16.82	19.71	0.00	0.00	-	-	-	-	-	-	-	-	-	-	-	-	-

Table 1

**Groundwater Monitoring and Sampling Data  
Former Chevron Service Station 93322  
7225 Bancroft Avenue  
Oakland, California**

Location	Date	TOC	DTW	GWE	LNAPLT	LNAPL REMOVED	HYDROCARBONS		PRIMARY VOCS					ADDITIONAL VOCS					
							TPH-GRO	B	T	E	X	MTBE by SW6260	MTBE by VOC	Ethanol	TBA	DIPE	ETBE	TAME	
	Units	ft	ft	ft-amsl	ft	gal	µg/L	µg/L	µg/L	µg/L	µg/L	µg/L	µg/L	µg/L	µg/L	µg/L	µg/L	µg/L	µg/L
MW-3	09/22/2014	36.53	19.63	16.90	0.00	0.00	12,000	770	36	280	120	97	-	<100	-	-	-	-	-
MW-3	12/23/2014 <sup>13</sup>	36.53	13.90	22.63	0.00	0.00	-	-	-	-	-	-	-	-	-	-	-	-	-
MW-3	03/05/2015	36.53	14.93	21.60	0.00	0.00	13,000	1,500	70	430	280	200	-	<250	-	-	-	-	-
MW-3	06/23/2015 <sup>13</sup>	36.53	17.95	18.58	0.00	0.00	-	-	-	-	-	-	-	-	-	-	-	-	-
MW-3	09/23/2015	36.53	20.88	15.65	0.00	0.00	16,000	1,300	49	360	140	130	-	<500	-	-	-	-	-
<b>MW-3</b>	<b>12/29/2015<sup>11</sup></b>	<b>36.53</b>	<b>18.92</b>	<b>17.61</b>	<b>0.00</b>	<b>0.00</b>	-	-	-	-	-	-	-	-	-	-	-	-	-
MW-4	02/02/1999	40.24	13.17	27.07	0.00	0.00	<50	0.52	<0.5	<0.5	<0.5	-	6.0	-	-	-	-	-	-
MW-4	06/07/1999	40.24	16.41	23.83	0.00	0.00	<50	<0.5	<0.5	<0.5	<0.5	-	<2.5	-	-	-	-	-	-
MW-4	09/07/1999	40.24	20.90	19.34	0.00	0.00	<50	<0.5	<0.5	<0.5	<0.5	-	<5.0	-	-	-	-	-	-
MW-4	10/27/1999	40.24	21.59	18.65	0.00	0.00	<50	<0.5	<0.5	<0.5	<0.5	-	<2.5	-	-	-	-	-	-
MW-4	02/08/2000	40.24	17.16	23.08	0.00	0.00	<50	<0.5	<0.5	<0.5	<0.5	-	<5.0	-	-	-	-	-	-
MW-4	05/05/2000	40.24	16.02	24.22	0.00	0.00	<50	<0.50	<0.50	<0.50	<0.50	-	<2.5	-	-	-	-	-	-
MW-4	07/28/2000	40.24	19.12	21.12	0.00	0.00	<50	<0.50	<0.50	<0.50	<0.50	-	<2.5	-	-	-	-	-	-
MW-4	11/26/2000	40.24	19.92	20.32	0.00	0.00	<50	<0.50	<0.50	<0.50	<0.50	-	<2.5	-	-	-	-	-	-
MW-4	02/09/2001	40.24	17.45	22.79	0.00	0.00	<50.0	<0.500	<0.500	<0.500	<0.500	-	<2.50	-	-	-	-	-	-
MW-4	05/11/2001	40.24	15.02	25.22	0.00	0.00	<50	<0.50	<0.50	<0.50	<0.50	-	<2.5	-	-	-	-	-	-
MW-4	08/30/2001	40.24	20.33	19.91	0.00	0.00	<50	<0.50	<0.50	<0.50	<0.50	-	<2.5	-	-	-	-	-	-
MW-4	11/21/2001	40.24	19.75	20.49	0.00	0.00	<50	<0.50	<0.50	<0.50	<1.5	-	<2.5	-	-	-	-	-	-
MW-4	02/05/2002	40.24	14.06	26.18	0.00	0.00	<50	<0.50	<0.50	<0.50	<1.5	-	<2.5	-	-	-	-	-	-
MW-4	04/01/2002	37.29	12.06	25.23	0.00	0.00	-	-	-	-	-	-	-	-	-	-	-	-	-
MW-4	08/05/2002	37.29	17.05	20.24	0.00	0.00	<50	<0.50	<0.50	<0.50	<1.5	-	<2.5	-	-	-	-	-	-
MW-4	11/04/2002	37.29	19.73	17.56	0.00	0.00	<50	<0.50	<0.50	<0.50	<1.5	-	<2.5	-	-	-	-	-	-
MW-4	02/03/2003	37.29	14.05	23.24	0.00	0.00	<50	<0.50	<0.50	<0.50	<1.5	-	<2.5	-	-	-	-	-	-
MW-4	05/02/2003	37.29	12.85	24.44	0.00	0.00	<50	<0.5	<0.5	<0.5	<1.5	-	<2.5	-	-	-	-	-	-
MW-4	08/01/2003 <sup>7</sup>	37.29	16.94	20.35	0.00	0.00	<50	<0.5	<0.5	<0.5	<0.5	<0.5	-	-	-	-	-	-	-
MW-4	11/21/2003 <sup>7</sup>	37.29	18.15	19.14	0.00	0.00	<50	<0.5	<0.5	<0.5	<0.5	<0.5	-	-	-	-	-	-	-

Table 1

Groundwater Monitoring and Sampling Data  
 Former Chevron Service Station 93322  
 7225 Bancroft Avenue  
 Oakland, California

Location	Date	TOC	DTW	GWE	LNAPLT	LNAPL REMOVED	HYDROCARBONS		PRIMARY VOCS					ADDITIONAL VOCS					
							TPH-GRO	B	T	E	X	MTBE by SW6260	MTBE by VOC	Ethanol	TBA	DIPE	ETBE	TAME	
	Units	ft	ft	ft-amsl	ft	gal	µg/L	µg/L	µg/L	µg/L	µg/L	µg/L	µg/L	µg/L	µg/L	µg/L	µg/L	µg/L	µg/L
MW-4	02/10/2004 <sup>7</sup>	37.29	13.02	24.27	0.00	0.00	<50	<0.5	<0.5	<0.5	<0.5	1	-	-	-	-	-	-	-
MW-4	05/11/2004 <sup>7</sup>	37.29	14.15	23.14	0.00	0.00	<50	<0.5	<0.5	<0.5	<0.5	<0.5	-	-	-	-	-	-	-
MW-4	08/10/2004 <sup>7</sup>	37.29	16.47	20.82	0.00	0.00	<50	<0.5	<0.5	<0.5	<0.5	<0.5	-	-	-	-	-	-	-
MW-4	11/08/2004 <sup>7</sup>	37.29	14.86	22.43	0.00	0.00	<50	<0.5	<0.5	<0.5	<0.5	<0.5	-	-	-	-	-	-	-
MW-4	02/21/2005 <sup>7</sup>	37.29	10.76	26.53	0.00	0.00	<50	<0.5	<0.5	<0.5	<0.5	<0.5	-	-	-	-	-	-	-
MW-4	05/10/2005 <sup>7</sup>	37.29	10.25	27.04	0.00	0.00	<50	<0.5	<0.5	<0.5	<0.5	1	-	-	-	-	-	-	-
MW-4	08/12/2005 <sup>7</sup>	37.29	15.25	22.04	0.00	0.00	<50	<0.5	<0.5	<0.5	<0.5	<0.5	-	-	-	-	-	-	-
MW-4	11/11/2005 <sup>7</sup>	37.29	18.36	18.93	0.00	0.00	<50	<0.5	<0.5	<0.5	<0.5	<0.5	-	-	-	-	-	-	-
MW-4	02/20/2006 <sup>7</sup>	37.29	11.59	25.70	0.00	0.00	<50	<0.5	<0.5	<0.5	<0.5	1	-	-	-	-	-	-	-
MW-4	05/12/2006 <sup>7</sup>	37.29	9.87	27.42	0.00	0.00	<50	<0.5	<0.5	<0.5	<0.5	0.8	-	-	-	-	-	-	-
MW-4	08/14/2006 <sup>7</sup>	37.29	15.35	21.94	0.00	0.00	<50	<0.5	<0.5	<0.5	<0.5	<0.5	-	-	-	-	-	-	-
MW-4	11/08/2006 <sup>7</sup>	37.29	18.28	19.01	0.00	0.00	<50	<0.5	<0.5	<0.5	<0.5	<0.5	-	-	-	-	-	-	-
MW-4	02/07/2007 <sup>7</sup>	37.29	15.40	21.89	0.00	0.00	<50	<0.5	<0.5	<0.5	<0.5	<0.5	-	-	-	-	-	-	-
MW-4	05/07/2007 <sup>7</sup>	37.29	13.56	23.73	0.00	0.00	<50	<0.5	<0.5	<0.5	<0.5	<0.5	-	-	-	-	-	-	-
MW-4	08/03/2007 <sup>7</sup>	37.29	17.70	19.59	0.00	0.00	<50	<0.5	<0.5	<0.5	<0.5	<0.5	-	-	-	-	-	-	-
MW-4	10/12/2007 <sup>7</sup>	37.29	19.48	17.81	0.00	0.00	<50	<0.5	<0.5	<0.5	<0.5	<0.5	-	-	-	-	-	-	-
MW-4	11/02/2007 <sup>7</sup>	37.29	19.41	17.88	0.00	0.00	<50	<0.5	<0.5	<0.5	<0.5	<0.5	-	-	-	-	-	-	-
MW-4	12/07/2007 <sup>7</sup>	37.29	19.45	17.84	0.00	0.00	<50	<0.5	<0.5	<0.5	<0.5	<0.5	-	-	-	-	-	-	-
MW-4	02/01/2008 <sup>7</sup>	37.29	13.15	24.14	0.00	0.00	<50	<0.5	<0.5	<0.5	<0.5	<0.5	-	-	-	-	-	-	-
MW-4	05/09/2008 <sup>7</sup>	37.29	14.98	22.31	0.00	0.00	<50	<0.5	<0.5	<0.5	<0.5	<0.5	-	-	-	-	-	-	-
MW-4	08/22/2008 <sup>7</sup>	37.29	18.67	18.62	0.00	0.00	<50	<0.5	<0.5	<0.5	<0.5	<0.5	-	-	-	-	-	-	-
MW-4	11/26/2008 <sup>7</sup>	37.29	20.03	17.26	0.00	0.00	<50	<0.5	<0.5	<0.5	<0.5	<0.5	-	-	-	-	-	-	-
MW-4	05/20/2009	37.29	14.89	22.40	0.00	0.00	<50	<0.5	<0.5	<0.5	<0.5	<0.5	-	<50	-	-	-	-	-
MW-4	08/26/2009	37.29	19.29	18.00	0.00	0.00	<50	<0.5	<0.5	<0.5	<0.5	<0.5	-	<50	-	-	-	-	-
MW-4	11/12/2009	37.29	17.70	19.59	0.00	0.00	<50	<0.5	<0.5	<0.5	<0.5	<0.5	-	<50	-	-	-	-	-
MW-4	02/01/2010	37.29	12.57	24.72	0.00	0.00	<50	<0.5	<0.5	<0.5	<0.5	<0.5	-	<50	-	-	-	-	-
MW-4	05/17/2010	37.29	11.15	26.14	0.00	0.00	<50	<0.5	<0.5	<0.5	<0.5	<0.5	-	<50	-	-	-	-	-

Table 1

Groundwater Monitoring and Sampling Data  
 Former Chevron Service Station 93322  
 7225 Bancroft Avenue  
 Oakland, California

Location	Date	TOC	DTW	GWE	LNAPLT	LNAPL REMOVED	HYDROCARBONS		PRIMARY VOCS					ADDITIONAL VOCS					
							TPH-GRO	B	T	E	X	MTBE by SW6260	MTBE by VOC	Ethanol	TBA	DIPE	ETBE	TAME	
	Units	ft	ft	ft-amsl	ft	gal	µg/L	µg/L	µg/L	µg/L	µg/L	µg/L	µg/L	µg/L	µg/L	µg/L	µg/L	µg/L	µg/L
MW-4	08/26/2010	37.29	15.50	21.79	0.00	0.00	<50	<0.5	<0.5	<0.5	<0.5	<0.5	-	<50	-	-	-	-	-
MW-4	11/11/2010	37.29	17.34	19.95	0.00	0.00	<50	<0.5	<0.5	<0.5	<0.5	<0.5	-	<50	-	-	-	-	-
MW-4	02/10/2011	37.29	13.01	24.28	0.00	0.00	<50	<0.5	<0.5	<0.5	<0.5	<0.5	-	<50	-	-	-	-	-
MW-4	06/17/2011	37.29	12.07	25.22	0.00	0.00	<50	<0.5	<0.5	<0.5	<0.5	<0.5	-	<50	-	-	-	-	-
MW-4	09/08/2011	37.29	15.75	21.54	0.00	0.00	<50	<0.5	<0.5	<0.5	<0.5	<0.5	-	<50	-	-	-	-	-
MW-4	12/16/2011	37.29	16.80	20.49	0.00	0.00	<50	<0.5	<0.5	<0.5	<0.5	<0.5	-	<50	-	-	-	-	-
MW-4	06/08/2012	37.29	14.30	22.99	0.00	0.00	<50	<0.5	<0.5	<0.5	<0.5	<0.5	-	<50	-	-	-	-	-
MW-4	06/08/2012	37.29	14.30	22.99	0.00	0.00	<50	<0.5	<0.5	<0.5	<0.5	<0.5	-	<50	-	-	-	-	-
MW-4	09/14/2012	37.29	18.10	19.19	0.00	0.00	<50	<0.5	<0.5	<0.5	2	<0.5	-	<50	<2	<0.5	<0.5	<0.5	<0.5
MW-4	12/21/2012	37.29	13.33	23.96	0.00	0.00	<50	<0.5	<0.5	<0.5	<0.5	<0.5	-	<50	-	-	-	-	-
MW-4	04/01/2013	37.29	15.67	21.62	0.00	0.00	<50	<0.5	<0.5	<0.5	<0.5	<0.5	-	<50	-	-	-	-	-
MW-4	06/28/2013	37.29	17.47	19.82	0.00	0.00	<50	<0.5	<0.5	<0.5	<0.5	<0.5	-	<50	-	-	-	-	-
MW-4	09/20/2013	37.29	19.26	18.03	0.00	0.00	<50	<0.5	<0.5	<0.5	<0.5	<0.5	-	<50	-	-	-	-	-
MW-4	12/30/2013	37.29	20.51	16.78	0.00	0.00	<50	<0.5	<0.5	<0.5	<0.5	<0.5	-	<50	-	-	-	-	-
MW-4	03/31/2014	37.29	15.50	21.79	0.00	0.00	<50	<0.5	<0.5	<0.5	<0.5	<0.5	-	<50	-	-	-	-	-
MW-4	06/30/2014	37.29	17.51	19.78	0.00	0.00	<50	<0.5	<0.5	<0.5	<0.5	<0.5	-	<50	-	-	-	-	-
MW-4	09/22/2014	37.29	20.31	16.98	0.00	0.00	<50	<0.5	<0.5	<0.5	<0.5	<0.5	-	<50	-	-	-	-	-
MW-4	12/23/2014	37.29	13.53	23.76	0.00	0.00	<50	<0.5	<0.5	<0.5	<0.5	<0.5	-	<50	-	-	-	-	-
MW-4	03/05/2015	37.29	15.05	22.24	0.00	0.00	<50	<0.5	<0.5	<0.5	<0.5	<0.5	-	<50	-	-	-	-	-
MW-4	06/23/2015	37.29	18.76	18.53	0.00	0.00	<50	<0.5	<0.5	<0.5	<0.5	<0.5	-	<50	<2	<0.5	<0.5	<0.5	<0.5
MW-4	09/23/2015	37.29	21.43	15.86	0.00	0.00	<50	<0.5	<0.5	<0.5	<0.5	<0.5	-	<50	-	-	-	-	-
<b>MW-4</b>	<b>12/29/2015</b>	<b>37.29</b>	<b>18.38</b>	<b>18.91</b>	<b>0.00</b>	<b>0.00</b>	<b>150</b>	<b>&lt;0.5</b>	<b>&lt;0.5</b>	<b>0.6 J</b>	<b>3</b>	-	-	<b>&lt;50</b>	-	-	-	-	-
MW-5	02/02/1999	40.37	18.80	21.57	0.00	0.00	72	2.7	<0.5	<0.5	<0.5	-	11	-	-	-	-	-	-
MW-5	06/07/1999	40.37	16.98	23.39	0.00	0.00	<50	<0.5	<0.5	<0.5	<0.5	-	<2.5	-	-	-	-	-	-
MW-5	09/07/1999	40.37	21.13	19.24	0.00	0.00	<50	<0.5	<0.5	<0.5	<0.5	-	6.92	-	-	-	-	-	-
MW-5	10/27/1999	40.37	21.92	18.45	0.00	0.00	<50	2.39	<0.5	<0.5	<0.5	-	21.3	-	-	-	-	-	-



Table 1

Groundwater Monitoring and Sampling Data  
 Former Chevron Service Station 93322  
 7225 Bancroft Avenue  
 Oakland, California

Location	Date	TOC	DTW	GWE	LNAPLT	LNAPL REMOVED	HYDROCARBONS		PRIMARY VOCS					ADDITIONAL VOCS					
							TPH-GRO	B	T	E	X	MTBE by SW6260	MTBE by VOC	Ethanol	TBA	DIPE	ETBE	TAME	
	Units	ft	ft	ft-amsl	ft	gal	µg/L	µg/L	µg/L	µg/L	µg/L	µg/L	µg/L	µg/L	µg/L	µg/L	µg/L	µg/L	µg/L
MW-5	02/08/2000	40.37	18.98	21.39	0.00	0.00	<50	10.6	<0.5	<0.5	<0.5	-	21.7	-	-	-	-	-	-
MW-5	05/05/2000	40.37	16.89	23.48	0.00	0.00	<50	<0.50	<0.50	<0.50	<0.50	-	3.8	-	-	-	-	-	-
MW-5	07/28/2000	40.37	19.49	20.88	0.00	0.00	<50	<0.50	<0.50	<0.50	<0.50	-	<2.5	-	-	-	-	-	-
MW-5	11/26/2000	40.37	20.69	19.68	0.00	0.00	<50	0.57	<0.50	<0.50	<0.50	-	15	-	-	-	-	-	-
MW-5	02/09/2001	40.37	18.87	21.50	0.00	0.00	<50.0	<0.500	<0.500	<0.500	<0.500	-	9.11	-	-	-	-	-	-
MW-5	05/11/2001	40.37	15.90	24.47	0.00	0.00	<50	<0.50	<0.50	<0.50	<0.50	-	<2.5	-	-	-	-	-	-
MW-5	08/30/2001	40.37	20.61	19.76	0.00	0.00	<50	<0.50	<0.50	<0.50	<0.50	-	9.5	-	-	-	-	-	-
MW-5	11/21/2001	40.37	21.04	19.33	0.00	0.00	<50	<0.50	<0.50	<0.50	<1.5	-	7.3	-	-	-	-	-	-
MW-5	02/05/2002	40.37	15.21	25.16	0.00	0.00	<50	<0.50	<0.50	<0.50	<1.5	-	<2.5	-	-	-	-	-	-
MW-5	04/01/2002	37.40	13.45	23.95	0.00	0.00	-	-	-	-	-	-	-	-	-	-	-	-	-
MW-5	08/05/2002	37.40	17.54	19.86	0.00	0.00	<50	<0.50	<0.50	<0.50	<1.5	-	2.7	-	-	-	-	-	-
MW-5	11/04/2002	37.40	20.07	17.33	0.00	0.00	<50	<0.50	<0.50	<0.50	<1.5	-	6.3	-	-	-	-	-	-
MW-5	02/03/2003	37.40	15.03	22.37	0.00	0.00	<50	<0.50	0.60	<0.50	<1.5	-	<2.5	-	-	-	-	-	-
MW-5	05/02/2003	37.40	13.96	23.44	0.00	0.00	<50	<0.5	<0.5	<0.5	<1.5	-	<2.5	-	-	-	-	-	-
MW-5	08/01/2003 <sup>7</sup>	37.40	17.40	20.00	0.00	0.00	<50	<0.5	<0.5	<0.5	<0.5	<0.5	-	-	-	-	-	-	-
MW-5	11/21/2003 <sup>7</sup>	37.40	18.57	18.83	0.00	0.00	<50	<0.5	<0.5	<0.5	<0.5	<0.5	-	-	-	-	-	-	-
MW-5	02/10/2004 <sup>7</sup>	37.40	14.14	23.26	0.00	0.00	<50	<0.5	<0.5	<0.5	<0.5	<0.5	-	-	-	-	-	-	-
MW-5	05/11/2004 <sup>7</sup>	37.40	14.70	22.70	0.00	0.00	<50	<0.5	<0.5	<0.5	<0.5	<0.5	-	-	-	-	-	-	-
MW-5	08/10/2004 <sup>7</sup>	37.40	17.08	20.32	0.00	0.00	<50	<0.5	<0.5	<0.5	<0.5	<0.5	-	-	-	-	-	-	-
MW-5	11/08/2004 <sup>7</sup>	37.40	15.98	21.42	0.00	0.00	<50	<0.5	<0.5	<0.5	<0.5	<0.5	-	-	-	-	-	-	-
MW-5	02/21/2005	37.40	-	-	-	-	-	-	-	-	-	-	-	-	-	-	-	-	-
MW-5	05/10/2005 <sup>7</sup>	37.40	11.88	25.52	0.00	0.00	<50	<0.5	<0.5	<0.5	<0.5	1	-	-	-	-	-	-	-
MW-5	08/12/2005 <sup>7</sup>	37.40	15.63	21.77	0.00	0.00	<50	<0.5	<0.5	<0.5	<0.5	<0.5	-	-	-	-	-	-	-
MW-5	11/11/2005 <sup>7</sup>	37.40	18.68	18.72	0.00	0.00	<50	<0.5	<0.5	<0.5	<0.5	0.8	-	-	-	-	-	-	-
MW-5	02/20/2006 <sup>7</sup>	37.40	12.57	24.83	0.00	0.00	<50	<0.5	<0.5	<0.5	<0.5	<0.5	-	-	-	-	-	-	-
MW-5	05/12/2006 <sup>7</sup>	37.40	11.06	26.34	0.00	0.00	<50	<0.5	<0.5	<0.5	<0.5	0.9	-	-	-	-	-	-	-
MW-5	08/14/2006 <sup>7</sup>	37.40	15.73	21.67	0.00	0.00	<50	<0.5	<0.5	<0.5	<0.5	0.9	-	-	-	-	-	-	-

Table 1

Groundwater Monitoring and Sampling Data  
 Former Chevron Service Station 93322  
 7225 Bancroft Avenue  
 Oakland, California

Location	Date	TOC	DTW	GWE	LNAPLT	LNAPL REMOVED	HYDROCARBONS		PRIMARY VOCS					ADDITIONAL VOCS					
							TPH-GRO	B	T	E	X	MTBE by SW6260	MTBE by VOC	Ethanol	TBA	DIPE	ETBE	TAME	
	Units	ft	ft	ft-amsl	ft	gal	µg/L	µg/L	µg/L	µg/L	µg/L	µg/L	µg/L	µg/L	µg/L	µg/L	µg/L	µg/L	µg/L
MW-5	11/08/2006 <sup>7</sup>	37.40	18.51	18.89	0.00	0.00	<50	<0.5	<0.5	<0.5	<0.5	1	-	-	-	-	-	-	-
MW-5	02/07/2007 <sup>7</sup>	37.40	16.02	21.38	0.00	0.00	<50	<0.5	<0.5	<0.5	<0.5	0.6	-	-	-	-	-	-	-
MW-5	05/07/2007 <sup>7</sup>	37.40	14.32	23.08	0.00	0.00	<50	<0.5	<0.5	<0.5	<0.5	<0.5	-	-	-	-	-	-	-
MW-5	08/03/2007 <sup>7</sup>	37.40	18.08	19.32	0.00	0.00	<50	<0.5	<0.5	<0.5	<0.5	0.6	-	-	-	-	-	-	-
MW-5	10/12/2007 <sup>7</sup>	37.40	19.74	17.66	0.00	0.00	<50	<0.5	<0.5	<0.5	<0.5	0.8	-	-	-	-	-	-	-
MW-5	11/02/2007 <sup>7</sup>	37.40	19.78	17.62	0.00	0.00	61	<0.5	<0.5	<0.5	<0.5	<0.5	-	-	-	-	-	-	-
MW-5	12/07/2007 <sup>7</sup>	37.40	19.71	17.69	0.00	0.00	<50	<0.5	<0.5	<0.5	<0.5	<0.5	-	-	-	-	-	-	-
MW-5	02/01/2008 <sup>7</sup>	37.40	14.34	23.06	0.00	0.00	<50	<0.5	<0.5	<0.5	<0.5	<0.5	-	-	-	-	-	-	-
MW-5	05/09/2008 <sup>7</sup>	37.40	15.62	21.78	0.00	0.00	<50	<0.5	<0.5	<0.5	<0.5	<0.5	-	-	-	-	-	-	-
MW-5	08/22/2008 <sup>7</sup>	37.40	18.96	18.44	0.00	0.00	<50	<0.5	<0.5	<0.5	<0.5	<0.5	-	-	-	-	-	-	-
MW-5	11/26/2008 <sup>7</sup>	37.40	20.35	17.05	0.00	0.00	<50	<0.5	<0.5	<0.5	<0.5	0.9	-	-	-	-	-	-	-
MW-5	05/20/2009	37.40	15.56	21.84	0.00	0.00	<50	<0.5	<0.5	<0.5	<0.5	<0.5	-	<50	-	-	-	-	-
MW-5	08/26/2009	37.40	19.56	17.84	0.00	0.00	<50	<0.5	<0.5	<0.5	<0.5	0.5 J	-	<50	-	-	-	-	-
MW-5	11/12/2009	37.40	18.50	18.90	0.00	0.00	<50	<0.5	<0.5	<0.5	<0.5	<0.5	-	<50	-	-	-	-	-
MW-5	02/01/2010	37.40	14.41	22.99	0.00	0.00	<50	<0.5	<0.5	<0.5	<0.5	<0.5	-	<50	-	-	-	-	-
MW-5	05/17/2010	37.40	13.00	24.40	0.00	0.00	<50	<0.5	<0.5	<0.5	<0.5	<0.5	-	<50	-	-	-	-	-
MW-5	08/26/2010	37.40	15.90	21.50	0.00	0.00	<50	<0.5	<0.5	<0.5	<0.5	<0.5	-	<50	-	-	-	-	-
MW-5	11/11/2010	37.40	18.05	19.35	0.00	0.00	68 J	<0.5	<0.5	<0.5	<0.5	<0.5	-	<50	-	-	-	-	-
MW-5	02/10/2011	37.40	13.70	23.70	0.00	0.00	<50	<0.5	<0.5	<0.5	<0.5	<0.5	-	<50	-	-	-	-	-
MW-5	06/17/2011	37.40	13.37	24.03	0.00	0.00	<50	<0.5	<0.5	<0.5	<0.5	<0.5	-	<50	-	-	-	-	-
MW-5	09/08/2011	37.40	16.15	21.25	0.00	0.00	<50	<0.5	<0.5	<0.5	<0.5	<0.5	-	<50	-	-	-	-	-
MW-5	12/16/2011	37.40	17.20	20.20	0.00	0.00	<50	<0.5	<0.5	<0.5	<0.5	<0.5	-	<50	-	-	-	-	-
MW-5	03/02/2012	37.40	17.41	19.99	0.00	0.00	<50	<0.5	<0.5	<0.5	<0.5	<0.5	-	<50	-	-	-	-	-
MW-5	06/08/2012	37.40	15.20	22.20	0.00	0.00	<50	<0.5	<0.5	<0.5	<0.5	<0.5	-	<50	-	-	-	-	-
MW-5	09/14/2012	37.40	18.40	19.00	0.00	0.00	130	<0.5	<0.5	4	22	<0.5	-	<50	<2	<0.5	<0.5	<0.5	<0.5
MW-5	12/21/2012	37.40	14.62	22.78	0.00	0.00	<50	<0.5	<0.5	<0.5	<0.5	<0.5	-	<50	-	-	-	-	-
MW-5	04/01/2013	37.40	16.10	21.30	0.00	0.00	<50	<0.5	<0.5	<0.5	<0.5	<0.5	-	<50	-	-	-	-	-

Table 1

Groundwater Monitoring and Sampling Data  
 Former Chevron Service Station 93322  
 7225 Bancroft Avenue  
 Oakland, California

Location	Date	TOC	DTW	GWE	LNAPLT	LNAPL REMOVED	HYDROCARBONS		PRIMARY VOCS					ADDITIONAL VOCS					
							TPH-GRO	B	T	E	X	MTBE by SW8260	MTBE by VOC	Ethanol	TBA	DIPE	ETBE	TAME	
	Units	ft	ft	ft-amsl	ft	gal	µg/L	µg/L	µg/L	µg/L	µg/L	µg/L	µg/L	µg/L	µg/L	µg/L	µg/L	µg/L	µg/L
MW-5	06/28/2013	37.40	17.77	19.63	0.00	0.00	150	<0.5	<0.5	<0.5	<0.5	<0.5	-	<50	-	-	-	-	-
MW-5	09/20/2013	37.40	19.59	17.81	0.00	0.00	170	<0.5	<0.5	<0.5	<0.5	0.5 J	-	<50	-	-	-	-	-
MW-5	12/30/2013	37.40	20.80	16.60	0.00	0.00	170	<0.5	<0.5	<0.5	<0.5	<0.5	-	<50	-	-	-	-	-
MW-5	03/31/2014	37.40	16.60	20.80	0.00	0.00	54 J	<0.5	<0.5	<0.5	<0.5	<0.5	-	<50	-	-	-	-	-
MW-5	06/30/2014	37.40	18.12	19.28	0.00	0.00	<50	<0.5	<0.5	<0.5	<0.5	<0.5	-	<50	-	-	-	-	-
MW-5	09/22/2014	37.40	20.70	16.70	0.00	0.00	410	<0.5	<0.5	<0.5	<0.5	<0.5	-	<50	-	-	-	-	-
MW-5	12/23/2014	37.40	15.10	22.30	0.00	0.00	<50	<0.5	<0.5	<0.5	<0.5	<0.5	-	<50	-	-	-	-	-
MW-5	03/05/2015	37.40	15.87	21.53	0.00	0.00	<50	<0.5	<0.5	<0.5	<0.5	<0.5	-	<50	-	-	-	-	-
MW-5	06/23/2015	37.40	19.13	18.27	0.00	0.00	<50	<0.5	<0.5	<0.5	<0.5	<0.5	-	<50	<2	<0.5	<0.5	<0.5	
MW-5	09/23/2015	37.40	21.86	15.54	0.00	0.00	200	<0.5	<0.5	<0.5	<0.5	<0.5	-	<50	-	-	-	-	
<b>MW-5</b>	<b>12/29/2015<sup>16</sup></b>	<b>37.40</b>	-	-	-	-	-	-	-	-	-	-	-	-	-	-	-	-	-
MW-6	02/02/1999	39.84	18.48	21.36	0.00	0.00	14,000	5,600	<50	150	160	-	<250	-	-	-	-	-	
MW-6	06/07/1999	39.84	16.45	23.39	0.00	0.00	1,500	1,100	33	25	34	-	200	-	-	-	-	-	
MW-6	09/07/1999	39.84	20.49	19.35	0.00	0.00	6,550	2,940	81.5	177	84	-	865	-	-	-	-	-	
MW-6	10/27/1999	39.84	21.23	18.61	0.00	0.00	3,680	1,240	29.6	115	14.9	-	735	-	-	-	-	-	
MW-6	02/08/2000	39.84	18.40	21.44	0.00	0.00	17,300	8,920	<100	378	211	-	2,610	-	-	-	-	-	
MW-6	05/05/2000	39.84	16.36	23.48	0.00	0.00	4,200 <sup>2</sup>	1,900	98	170	290	-	1,300	-	-	-	-	-	
MW-6	07/28/2000	39.84	18.94	20.90	0.00	0.00	1,200 <sup>2</sup>	660	30	83	36	-	650	-	-	-	-	-	
MW-6	11/26/2000	39.84	20.13	19.71	0.00	0.00	7,600 <sup>2</sup>	4,300	63	360	110	-	2,000	-	-	-	-	-	
MW-6	02/09/2001	39.84	18.40	21.44	0.00	0.00	18,200 <sup>3</sup>	7,090	<100	457	169	-	2,930	-	-	-	-	-	
MW-6	05/11/2001	39.84	15.45	24.39	0.00	0.00	2,600 <sup>2</sup>	2,300	31	88	40	-	990	-	-	-	-	-	
MW-6	08/30/2001	39.84	20.02	19.82	0.00	0.00	2,500	1,600	50	160	100	-	1,900	-	-	-	-	-	
MW-6	11/21/2001	39.84	20.62	19.22	0.00	0.00	25,000	8,800	150	620	330	-	2,900	-	-	-	-	-	
MW-6	02/05/2002	39.84	15.80	24.04	0.00	0.00	1,400	400	6.8	27	20	-	480	-	-	-	-	-	
MW-6	04/01/2002	36.90	13.82	23.08	0.00	0.00	-	-	-	-	-	-	-	-	-	-	-	-	
MW-6	08/05/2002	36.90	17.05	19.85	0.00	0.00	1,200	300	5.1	11	3.7	-	250	-	-	-	-	-	

Table 1

**Groundwater Monitoring and Sampling Data  
Former Chevron Service Station 93322  
7225 Bancroft Avenue  
Oakland, California**

Location	Date	TOC	DTW	GWE	LNAPLT	LNAPL REMOVED	HYDROCARBONS		PRIMARY VOCS					ADDITIONAL VOCS					
							TPH-GRO	B	T	E	X	MTBE by SW6260	MTBE by VOC	Ethanol	TBA	DIPE	ETBE	TAME	
	Units	ft	ft	ft-amsl	ft	gal	µg/L	µg/L	µg/L	µg/L	µg/L	µg/L	µg/L	µg/L	µg/L	µg/L	µg/L	µg/L	µg/L
MW-6	11/04/2002	36.90	19.56	17.34	0.00	0.00	7,500	2,000	29	140	39	-	1,300	-	-	-	-	-	-
MW-6	02/03/2003	36.90	14.62	22.28	0.00	0.00	630	160	<5.0	9.2	2.7	-	260	-	-	-	-	-	-
MW-6	05/02/2003	36.90	-	-	-	-	-	-	-	-	-	-	-	-	-	-	-	-	-
MW-6	08/01/2003 <sup>7</sup>	36.90	16.88	20.02	0.00	0.00	1,500	400	3	14	3	540	-	-	-	-	-	-	-
MW-6	11/21/2003 <sup>7</sup>	36.90	18.41	18.49	0.00	0.00	4,400	1,300	12	98	18	540	-	-	-	-	-	-	-
MW-6	02/10/2004 <sup>7</sup>	36.90	13.70	23.20	0.00	0.00	430	110	1	4	0.7	150	-	-	-	-	-	-	-
MW-6	05/11/2004 <sup>7</sup>	36.90	14.27	22.63	0.00	0.00	95	11	<0.5	1	0.6	120	-	-	-	-	-	-	-
MW-6	08/10/2004 <sup>7</sup>	36.90	16.64	20.26	0.00	0.00	430	46	<0.5	3	<0.5	140	-	-	-	-	-	-	-
MW-6	11/08/2004 <sup>7</sup>	36.90	15.63	21.27	0.00	0.00	750	50	<0.5	2	<0.5	81	-	-	-	-	-	-	-
MW-6	02/21/2005 <sup>7</sup>	36.90	11.43	25.47	0.00	0.00	130	8	<0.5	<0.5	<0.5	60	-	-	-	-	-	-	-
MW-6	05/10/2005 <sup>7</sup>	36.90	11.41	25.49	0.00	0.00	<50	<0.5	<0.5	<0.5	<0.5	<0.5	-	-	-	-	-	-	-
MW-6	08/12/2005 <sup>7</sup>	36.90	15.08	21.82	0.00	0.00	75	<0.5	<0.5	<0.5	<0.5	82	-	-	-	-	-	-	-
MW-6	11/11/2005 <sup>7</sup>	36.90	18.16	18.74	0.00	0.00	1,100	270	12	19	46	350	-	-	-	-	-	-	-
MW-6	02/20/2006 <sup>7</sup>	36.90	12.15	24.75	0.00	0.00	1,100	250	3	22	9	130	-	-	-	-	-	-	-
MW-6	05/12/2006 <sup>7</sup>	36.90	10.32	26.58	0.00	0.00	<50	<0.5	<0.5	<0.5	<0.5	84	-	-	-	-	-	-	-
MW-6	08/14/2006 <sup>7</sup>	36.90	15.21	21.69	0.00	0.00	51	<0.5	<0.5	<0.5	<0.5	75	-	-	-	-	-	-	-
MW-6	11/08/2006 <sup>7</sup>	36.90	17.97	18.93	0.00	0.00	200	3	<0.5	<0.5	<0.5	27	-	-	-	-	-	-	-
MW-6	02/07/2007 <sup>7</sup>	36.90	15.60	21.30	0.00	0.00	1,500	120	0.8	5	1	54	-	-	-	-	-	-	-
MW-6	05/07/2007 <sup>7</sup>	36.90	14.78	22.12	0.00	0.00	740	98	0.5	2	2	31	-	-	-	-	-	-	-
MW-6	08/03/2007 <sup>7</sup>	36.90	17.57	19.33	0.00	0.00	1,600	410	4	2	3	80	-	-	-	-	-	-	-
MW-6	10/12/2007 <sup>7</sup>	36.90	19.20	17.70	0.00	0.00	1,100	130	0.9	0.9	<0.5	79	-	-	-	-	-	-	-
MW-6	11/02/2007 <sup>7</sup>	36.90	19.43	17.47	0.00	0.00	1,500	240	1	0.7	0.5	70	-	-	-	-	-	-	-
MW-6	12/07/2007 <sup>7</sup>	36.90	19.11	17.79	0.00	0.00	770	84	<0.5	<0.5	<0.5	60	-	-	-	-	-	-	-
MW-6	02/01/2008 <sup>7</sup>	36.90	14.03	22.87	0.00	0.00	650	89	<0.5	1	0.7	24	-	-	-	-	-	-	-
MW-6	05/09/2008 <sup>7</sup>	36.90	15.22	21.68	0.00	0.00	680	87	<0.5	<0.5	<0.5	19	-	-	-	-	-	-	-
MW-6	08/22/2008 <sup>7</sup>	36.90	18.46	18.44	0.00	0.00	950	43	<0.5	<0.5	<0.5	38	-	-	-	-	-	-	-
MW-6	11/26/2008 <sup>7</sup>	36.90	19.87	17.03	0.00	0.00	1,500	190	1	0.6	0.5	71	-	-	-	-	-	-	-

Table 1

**Groundwater Monitoring and Sampling Data  
Former Chevron Service Station 93322  
7225 Bancroft Avenue  
Oakland, California**

Location	Date	TOC	DTW	GWE	LNAPLT	LNAPL REMOVED	HYDROCARBONS		PRIMARY VOCS					ADDITIONAL VOCS					
							TPH-GRO	B	T	E	X	MTBE by SW6260	MTBE by VOC	Ethanol	TBA	DIPE	ETBE	TAME	
	Units	ft	ft	ft-amsl	ft	gal	µg/L	µg/L	µg/L	µg/L	µg/L	µg/L	µg/L	µg/L	µg/L	µg/L	µg/L	µg/L	µg/L
MW-6	05/20/2009	36.90	15.03	21.87	0.00	0.00	580	23	<0.5	0.7 J	<0.5	11	-	<50	-	-	-	-	-
MW-6	08/26/2009	36.90	19.00	17.90	0.00	0.00	1,100	88	0.8 J	0.6 J	<0.5	25	-	<50	-	-	-	-	-
MW-6	11/12/2009	36.90	18.19	18.71	0.00	0.00	980	95	0.8 J	1	1	20	-	<50	-	-	-	-	-
MW-6	02/01/2010	36.90	13.30	23.60	0.00	0.00	530	28	<0.5	0.9 J	<0.5	6	-	<50	-	-	-	-	-
MW-6	05/17/2010	36.90	11.67	25.23	0.00	0.00	450	14	<0.5	1	<0.5	4	-	<50	-	-	-	-	-
MW-6	08/26/2010	36.90	15.42	21.48	0.00	0.00	860	29	<0.5	2	<0.5	4	-	<50	-	-	-	-	-
MW-6	11/11/2010 <sup>12</sup>	36.90	-	-	-	-	-	-	-	-	-	-	-	-	-	-	-	-	-
MW-6	02/10/2011	36.90	13.00	23.90	0.00	0.00	370	10	<0.5	<0.5	<0.5	3	-	<50	-	-	-	-	-
MW-6	06/17/2011	36.90	12.35	24.55	0.00	0.00	690	22	<0.5	2	<0.5	4	-	<50	-	-	-	-	-
MW-6	09/08/2011	36.90	15.68	21.22	0.00	0.00	880	92	<0.5	2	<0.5	6	-	<50	-	-	-	-	-
MW-6	12/16/2011	36.90	16.63	20.27	0.00	0.00	3,200	620	4	10	8	11	-	<50	-	-	-	-	-
MW-6	03/02/2012	36.90	16.55	20.35	0.00	0.00	2,900	510	<5	<5	5 J	13	-	<500	-	-	-	-	-
MW-6	06/08/2012	36.90	14.03	22.87	0.00	0.00	3,000	750	<5	<5	<5	12	-	<500	-	-	-	-	-
MW-6	09/14/2012	36.90	17.84	19.06	0.00	0.00	4,300	930	<5	<5	<5	10	-	<500	81	<5	<5	<5	-
MW-6	12/21/2012	36.90	13.88	23.02	0.00	0.00	2,200	360	<5	<5	<5	28	-	<500	-	-	-	-	-
MW-6	04/01/2013	36.90	15.58	21.32	0.00	0.00	2,100	520	2	3	2	21	-	<50	-	-	-	-	-
MW-6	06/28/2013	36.90	17.30	19.60	0.00	0.00	1,600	130	<0.5	<0.5	<0.5	5	-	<50	-	-	-	-	-
MW-6	09/20/2013	36.90	19.07	17.83	0.00	0.00	3,100	680	3	4	3	15	-	<50	-	-	-	-	-
MW-6	12/30/2013 <sup>14</sup>	36.90	-	-	-	-	-	-	-	-	-	-	-	-	-	-	-	-	-
MW-6	03/31/2014	36.90	16.10	20.80	0.00	0.00	2,000	220	2	4	2	20	-	<50	-	-	-	-	-
MW-6	06/30/2014	36.90	17.41	19.49	0.00	0.00	1,400	100	0.6 J	2	<0.5	14	-	<50	-	-	-	-	-
MW-6	09/22/2014	36.90	20.22	16.68	0.00	0.00	2,100	180	1	2	2	14	-	<50	-	-	-	-	-
MW-6	12/23/2014 <sup>14</sup>	36.90	-	-	0.00	0.00	-	-	-	-	-	-	-	-	-	-	-	-	-
MW-6	03/05/2015	36.90	15.52	21.38	0.00	0.00	710	34	<0.5	0.5 J	<0.5	6	-	<50	-	-	-	-	-
MW-6	06/23/2015	36.90	18.52	18.38	0.00	0.00	1,500	230	<3	<3	6	6	-	<250	43	<3	<3	<3	-
MW-6	09/23/2015	36.90	21.38	15.52	0.00	0.00	4,800	680	4 J	<3	13	11	-	<250	-	-	-	-	-
<b>MW-6</b>	<b>12/29/2015</b>	<b>36.90</b>	<b>19.50</b>	<b>17.40</b>	<b>0.00</b>	<b>0.00</b>	<b>1,200</b>	<b>230</b>	<b>&lt;5</b>	<b>&lt;5</b>	<b>&lt;5</b>	<b>-</b>	<b>-</b>	<b>&lt;500</b>	<b>-</b>	<b>-</b>	<b>-</b>	<b>-</b>	<b>-</b>



**Table 1**  
**Groundwater Monitoring and Sampling Data**  
**Former Chevron Service Station 93322**  
**7225 Bancroft Avenue**  
**Oakland, California**

Location	Date	TOC	DTW	GWE	LNAPLT	LNAPL REMOVED	HYDROCARBONS		PRIMARY VOCS					ADDITIONAL VOCS					
							TPH-GRO	B	T	E	X	MTBE by SW6260	MTBE by VOC	Ethanol	TBA	DIPE	ETBE	TAME	
	Units	ft	ft	ft-amsl	ft	gal	µg/L	µg/L	µg/L	µg/L	µg/L	µg/L	µg/L	µg/L	µg/L	µg/L	µg/L	µg/L	µg/L
MW-7	02/21/2005 <sup>7</sup>	36.84	10.41	26.43	0.00	0.00	7,600	2,200	6	210	920	53	-	<100	130	<1	<1	<1	<1
MW-7	05/10/2005 <sup>7</sup>	36.84	9.59	27.25	0.00	0.00	3,900	700	<0.5	<0.5	650	77	-	<50	140	<0.5	<0.5	<0.5	<0.5
MW-7	08/12/2005 <sup>7</sup>	36.84	12.83	24.01	0.00	0.00	18,000	7,300	12	1,100	2,500	80	-	<500	280	<5	<5	<5	<5
MW-7	11/11/2005 <sup>7</sup>	36.84	16.64	20.20	0.00	0.00	39,000	11,000	38	1,700	2,900	100	-	<1,000	340	<10	<10	<10	<10
MW-7	02/20/2006 <sup>7</sup>	36.84	10.39	26.45	0.00	0.00	17,000	4,400	18	470	1,500	62	-	<500	200	<5	<5	<5	<5
MW-7	05/12/2006 <sup>7</sup>	36.84	8.79	28.05	0.00	0.00	15,000	5,100	12	370	880	73	-	<500	200	<5	<5	<5	<5
MW-7	08/14/2006 <sup>7</sup>	36.84	13.88	22.96	0.00	0.00	30,000	8,100	18	1,500	3,600	74	-	<1,000	280	<10	<10	<10	<10
MW-7	11/08/2006 <sup>7</sup>	36.84	16.87	19.97	0.00	0.00	39,000	10,000	28	1,400	2,300	89	-	<1,000	330	<10	<10	<10	<10
MW-7	02/07/2007 <sup>7</sup>	36.84	14.43	22.41	0.00	0.00	43,000	9,400	51	1,800	4,400	80	-	<500	280	<5	<5	<5	<5
MW-7	05/07/2007 <sup>7</sup>	36.84	12.57	24.27	0.00	0.00	50,000	8,800	35	1,700	3,700	72	-	<1,000	240	<10	<10	<10	<10
MW-7	08/03/2007 <sup>7</sup>	36.84	16.10	20.74	0.00	0.00	57,000	12,000	41	2,400	4,400	84	-	<2,500	300	<25	<25	<25	<25
MW-7	10/12/2007 <sup>7</sup>	36.84	18.16	18.68	0.00	0.00	15,000	2,300	63	270	730	58	-	<1,000	290	<10	<10	<10	<10
MW-7	11/02/2007 <sup>7</sup>	36.84	18.01	18.83	0.00	0.00	21,000	5,000	120	820	2,300	59	-	<500	280	<5	<5	<5	<5
MW-7	12/07/2007	36.84	18.92	17.92	0.00	0.00	-	-	-	-	-	-	-	-	-	-	-	-	-
MW-7	02/01/2008	36.84	12.78	24.06	0.00	0.00	-	-	-	-	-	-	-	-	-	-	-	-	-
MW-7	05/09/2008 <sup>7</sup>	36.84	13.98	22.86	0.00	0.00	24,000	4,600	99	1,000	3,400	57	-	<250	240	<3	<3	<3	<3
MW-7	08/22/2008 <sup>7</sup>	36.84	17.19	19.65	0.00	0.00	32,000	9,500	240	1,900	4,800	76	-	<1,000	270	<10	<10	<10	<10
MW-7	11/26/2008 <sup>7</sup>	36.84	19.01	17.83	0.00	0.00	39,000	9,700	840	1,600	5,700	62	-	<1,300	280	<13	<13	<13	<13
MW-7	05/20/2009	36.84	13.71	23.13	0.00	0.00	24,000	5,400	190	810	2,800	66	-	<250	260	<3	<3	<3	<3
MW-7	08/26/2009	36.84	19.00	17.84	0.00	0.00	-	-	-	-	-	-	-	-	-	-	-	-	-
MW-7	11/12/2009	36.84	16.43	20.41	0.00	0.00	19,000	5,900	190	540	1,800	57	-	<500	240	<5	<5	<5	<5
MW-7	05/17/2010	36.84	10.30	26.54	0.00	0.00	13,000	3,600	63	310	1,300	58	-	<250	220	<3	<3	<3	<3
MW-7	08/26/2010 <sup>11</sup>	36.84	14.40	22.44	0.00	0.00	-	-	-	-	-	-	-	-	-	-	-	-	-
MW-7	11/11/2010	36.84	16.50	20.34	0.00	0.00	16,000	7,300	140	720	2,400	64	-	<500	280	<5	<5	<5	<5
MW-7	02/10/2011 <sup>13</sup>	36.84	12.16	24.68	0.00	0.00	-	-	-	-	-	-	-	-	-	-	-	-	-
MW-7	06/17/2011	36.84	11.25	25.59	0.00	0.00	12,000	3,800	22	460	1,600	56	-	<250	120	<3	<3	<3	<3

Table 1

**Groundwater Monitoring and Sampling Data  
Former Chevron Service Station 93322  
7225 Bancroft Avenue  
Oakland, California**

Location	Date	TOC	DTW	GWE	LNAPLT	LNAPL REMOVED	HYDROCARBONS		PRIMARY VOCS					ADDITIONAL VOCS					
							TPH-GRO	B	T	E	X	MTBE by SW6260	MTBE by VOC	Ethanol	TBA	DIPE	ETBE	TAME	
	Units	ft	ft	ft-amsl	ft	gal	µg/L	µg/L	µg/L	µg/L	µg/L	µg/L	µg/L	µg/L	µg/L	µg/L	µg/L	µg/L	µg/L
MW-7	09/08/2011	36.84	14.65	22.19	0.00	0.00	-	-	-	-	-	-	-	-	-	-	-	-	-
MW-7	12/16/2011	36.84	17.36	19.48	0.00	0.00	35,000	8,100	370	1,000	3,900	78	-	<500	300	<5	<5	<5	
MW-7	03/02/2012 <sup>13</sup>	36.84	15.42	21.42	0.00	0.00	-	-	-	-	-	-	-	-	-	-	-	-	-
MW-7	06/08/2012	36.84	13.10	23.74	0.00	0.00	19,000	6,000	180	310	1,200	56	-	<500	-	-	-	-	
MW-7	09/14/2012 <sup>13</sup>	36.84	16.91	19.93	0.00	0.00	-	-	-	-	-	-	-	-	-	-	-	-	
MW-7	12/21/2012	36.84	12.19	24.65	0.00	0.00	21,000	5,300	160	530	2,200	55	-	<2,500	240 J	<25	<25	<25	
MW-7	04/01/2013 <sup>13</sup>	36.84	14.64	22.20	0.00	0.00	-	-	-	-	-	-	-	-	-	-	-	-	
MW-7	06/28/2013	36.84	16.10	20.74	0.00	0.00	20,000	6,900	200	420	1,700	81	-	<250	240	<3	<3	<3	
MW-7	09/20/2013 <sup>13</sup>	36.84	17.72	19.12	0.00	0.00	-	-	-	-	-	-	-	-	-	-	-	-	
MW-7	12/30/2013	36.84	19.10	17.74	0.00	0.00	14,000	4,800	220	210	1,300	55	-	<500	-	-	-	-	
MW-7	03/31/2014 <sup>13</sup>	36.84	14.64	22.20	0.00	0.00	-	-	-	-	-	-	-	-	-	-	-	-	
MW-7	06/30/2014	36.84	15.92	20.92	0.00	0.00	28,000	6,300	290	790	3,000	53	-	<500	-	-	-	-	
MW-7	09/22/2014 <sup>13</sup>	36.84	18.98	17.86	0.00	0.00	-	-	-	-	-	-	-	-	-	-	-	-	
MW-7	12/23/2014	36.84	12.62	24.22	0.00	0.00	11,000	1,900	100	230	1,200	31	-	<250	110	<3	<3	<3	
MW-7	03/05/2015 <sup>13</sup>	36.84	13.90	22.94	0.00	0.00	-	-	-	-	-	-	-	-	-	-	-	-	
MW-7	06/23/2015	36.84	17.40	19.44	0.00	0.00	17,000	7,400	200	620	2,500	57	-	<2,500	240 J	<25	<25	<25	
MW-7	09/23/2015 <sup>13</sup>	36.84	19.99	16.85	0.00	0.00	-	-	-	-	-	-	-	-	-	-	-	-	
<b>MW-7</b>	<b>12/29/2015</b>	<b>36.84</b>	<b>17.31</b>	<b>19.53</b>	<b>0.00</b>	<b>0.00</b>	<b>3,700</b>	<b>1,100</b>	<b>19</b>	<b>23</b>	<b>210</b>	<b>37</b>	-	<b>&lt;500</b>	<b>200</b>	<b>&lt;5</b>	<b>&lt;5</b>	<b>&lt;5</b>	
MW-8	04/01/2002 <sup>6</sup>	37.21	11.10	26.11	0.00	0.00	1,200	8.6	<0.50	2.5	2.5	-	<2.5/<2 <sup>5</sup>	-	<100	<2	<2	<2	
MW-8	08/05/2002	37.21	16.14	21.07	0.00	0.00	560	11	<0.50	<0.50	<1.5	-	<2.5/<2 <sup>5</sup>	-	<100	<2	<2	<2	
MW-8	11/04/2002	37.21	18.97	18.24	0.00	0.00	780	5.1	<0.50	1.1	1.9	-	<2 <sup>5</sup> / <sup>5</sup> <2.5	-	<100	<2	<2	<2	
MW-8	02/03/2003	37.21	13.21	24.00	0.00	0.00	230	3.7	<0.50	0.54	<1.5	-	<0.6 <sup>5</sup> / <sup>5</sup> <10	-	<5	<0.5	<0.5	<0.5	
MW-8	05/02/2003	37.21	12.12	25.09	0.00	0.00	180	2.5	<0.5	<0.5	<1.5	-	<0.5 <sup>5</sup> / <sup>5</sup> <2.5	-	<5	<0.5	<0.5	<0.5	
MW-8	08/01/2003 <sup>7</sup>	37.21	16.11	21.10	0.00	0.00	220	2	<0.5	<0.5	<0.5	0.8	-	<50	<5	<0.5	<0.5	<0.5	
MW-8	11/21/2003 <sup>7</sup>	37.21	17.17	20.04	0.00	0.00	140	<0.5	<0.5	<0.5	<0.5	0.7	-	<50	<5	<0.5	<0.5	<0.5	
MW-8	02/10/2004 <sup>7</sup>	37.21	12.13	25.08	0.00	0.00	150	2	<0.5	<0.5	<0.5	0.8	-	<50	<5	<0.5	<0.5	<0.5	

Table 1

**Groundwater Monitoring and Sampling Data  
Former Chevron Service Station 93322  
7225 Bancroft Avenue  
Oakland, California**

Location	Date	TOC	DTW	GWE	LNAPLT	LNAPL REMOVED	HYDROCARBONS		PRIMARY VOCS					ADDITIONAL VOCS					
							TPH-GRO	B	T	E	X	MTBE by SW6260	MTBE by VOC	Ethanol	TBA	DIPE	ETBE	TAME	
	Units	ft	ft	ft-amsl	ft	gal	µg/L	µg/L	µg/L	µg/L	µg/L	µg/L	µg/L	µg/L	µg/L	µg/L	µg/L	µg/L	µg/L
MW-8	05/11/2004 <sup>7</sup>	37.21	13.47	23.74	0.00	0.00	86	4	<0.5	<0.5	<0.5	1	-	<50	<5	<0.5	<0.5	<0.5	<0.5
MW-8	08/10/2004 <sup>7</sup>	37.21	15.65	21.56	0.00	0.00	80	<0.5	<0.5	<0.5	<0.5	0.8	-	<50	<5	<0.5	<0.5	<0.5	<0.5
MW-8	11/08/2004 <sup>7</sup>	37.21	13.98	23.23	0.00	0.00	110	<0.5	<0.5	<0.5	<0.5	1	-	<50	7	<0.5	<0.5	<0.5	<0.5
MW-8	02/21/2005 <sup>7</sup>	37.21	10.09	27.12	0.00	0.00	<50	<0.5	<0.5	<0.5	<0.5	<0.5	-	<50	<5	<0.5	<0.5	<0.5	<0.5
MW-8	05/10/2005 <sup>7</sup>	37.21	10.60	26.61	0.00	0.00	<50	<0.5	<0.5	<0.5	<0.5	1	-	<50	<5	<0.5	<0.5	<0.5	<0.5
MW-8	08/12/2005 <sup>7</sup>	37.21	12.58	24.63	0.00	0.00	<50	<0.5	<0.5	<0.5	<0.5	<0.5	-	<50	<5	<0.5	<0.5	<0.5	<0.5
MW-8	11/11/2005 <sup>7</sup>	37.21	17.41	19.80	0.00	0.00	96	<0.5	<0.5	<0.5	<0.5	2	-	<50	6	<0.5	<0.5	<0.5	<0.5
MW-8	02/20/2006 <sup>7</sup>	37.21	10.79	26.42	0.00	0.00	81	<0.5	<0.5	<0.5	<0.5	0.6	-	<50	<5	<0.5	<0.5	<0.5	<0.5
MW-8	05/12/2006 <sup>7</sup>	37.21	9.24	27.97	0.00	0.00	72	1	<0.5	<0.5	<0.5	2	-	<50	6	<0.5	<0.5	<0.5	<0.5
MW-8	08/14/2006 <sup>7</sup>	37.21	14.67	22.54	0.00	0.00	110	3	<0.5	<0.5	<0.5	2	-	<50	7	<0.5	<0.5	<0.5	<0.5
MW-8	11/08/2006 <sup>7</sup>	37.21	17.41	19.80	0.00	0.00	310	2	1	<0.5	2	3	-	<50	13	<0.5	<0.5	<0.5	<0.5
MW-8	02/07/2007 <sup>7</sup>	37.21	14.58	22.63	0.00	0.00	310	0.6	<0.5	<0.5	<0.5	2	-	<50	7	<0.5	<0.5	<0.5	<0.5
MW-8	05/07/2007 <sup>7</sup>	37.21	12.78	24.43	0.00	0.00	95	0.5	<0.5	<0.5	<0.5	2	-	<50	6	<0.5	<0.5	<0.5	<0.5
MW-8	08/03/2007 <sup>7</sup>	37.21	16.70	20.51	0.00	0.00	130	<0.5	<0.5	<0.5	<0.5	2	-	<50	8	<0.5	<0.5	<0.5	<0.5
MW-8	10/12/2007 <sup>7</sup>	37.21	18.51	18.70	0.00	0.00	340	<0.5	<0.5	<0.5	<0.5	5	-	<50	20	<0.5	<0.5	<0.5	<0.5
MW-8	11/02/2007 <sup>7</sup>	37.21	18.81	18.40	0.00	0.00	210	<0.5	<0.5	<0.5	<0.5	2	-	<50	5	<0.5	<0.5	<0.5	<0.5
MW-8	12/07/2007 <sup>7</sup>	37.21	18.62	18.59	0.00	0.00	230	<0.5	<0.5	<0.5	<0.5	2	-	<50	5	<0.5	<0.5	<0.5	<0.5
MW-8	02/01/2008 <sup>7</sup>	37.21	14.18	23.03	0.00	0.00	96	<0.5	<0.5	<0.5	<0.5	0.8	-	<50	<2	<0.5	<0.5	<0.5	<0.5
MW-8	05/09/2008 <sup>7</sup>	37.21	14.33	22.88	0.00	0.00	120	2	<0.5	<0.5	<0.5	2	-	<50	6	<0.5	<0.5	<0.5	<0.5
MW-8	08/22/2008 <sup>7</sup>	37.21	17.88	19.33	0.00	0.00	180	0.9	<0.5	<0.5	<0.5	4	-	<50	14	<0.5	<0.5	<0.5	<0.5
MW-8	11/26/2008 <sup>7</sup>	37.21	19.52	17.69	0.00	0.00	350	<0.5	<0.5	<0.5	<0.5	1	-	<50	2	<0.5	<0.5	<0.5	<0.5
MW-8	05/20/2009	37.21	14.11	23.10	0.00	0.00	310	3	<0.5	<0.5	<0.5	0.7 J	-	<50	<2	<0.5	<0.5	<0.5	<0.5
MW-8	08/26/2009	37.21	18.19	19.02	0.00	0.00	-	-	-	-	-	-	-	-	-	-	-	-	-
MW-8	11/12/2009	37.21	16.60	20.61	0.00	0.00	350	2	<0.5	<0.5	<0.5	1	-	<50	2 J	<0.5	<0.5	<0.5	<0.5
MW-8	05/17/2010	37.21	10.50	26.71	0.00	0.00	230	2	<0.5	<0.5	<0.5	0.5 J	-	<50	<2	<0.5	<0.5	<0.5	<0.5
MW-8	08/26/2010 <sup>11</sup>	37.21	14.72	22.49	0.00	0.00	-	-	-	-	-	-	-	-	-	-	-	-	-
MW-8	11/11/2010	37.21	16.58	20.63	0.00	0.00	330	<0.5	<0.5	<0.5	<0.5	1	-	<50	3 J	<0.5	<0.5	<0.5	<0.5

Table 1

**Groundwater Monitoring and Sampling Data  
Former Chevron Service Station 93322  
7225 Bancroft Avenue  
Oakland, California**

Location	Date	TOC	DTW	GWE	LNAPLT	LNAPL REMOVED	HYDROCARBONS		PRIMARY VOCs					ADDITIONAL VOCs					
							TPH-GRO	B	T	E	X	MTBE by SW6260	MTBE by VOC	Ethanol	TBA	DIPE	ETBE	TAME	
	Units	ft	ft	ft-amsl	ft	gal	µg/L	µg/L	µg/L	µg/L	µg/L	µg/L	µg/L	µg/L	µg/L	µg/L	µg/L	µg/L	µg/L
MW-8	02/10/2011 <sup>13</sup>	37.21	12.30	24.91	0.00	0.00	-	-	-	-	-	-	-	-	-	-	-	-	-
MW-8	06/17/2011	37.21	11.43	25.78	0.00	0.00	<50	<0.5	<0.5	<0.5	<0.5	1	-	<50	<2	<0.5	<0.5	<0.5	
MW-8	09/08/2011	37.21	15.15	22.06	0.00	0.00	-	-	-	-	-	-	-	-	-	-	-	-	
MW-8	12/16/2011	37.21	15.00	22.21	0.00	0.00	<50	<0.5	<0.5	<0.5	<0.5	1	-	<50	4 J	<0.5	<0.5	<0.5	
MW-8	03/02/2012 <sup>13</sup>	37.21	15.70	21.51	0.00	0.00	-	-	-	-	-	-	-	-	-	-	-	-	
MW-8	06/08/2012	37.21	13.42	23.79	0.00	0.00	100	2	<0.5	<0.5	<0.5	3	-	<50	-	-	-	-	
MW-8	09/14/2012 <sup>13</sup>	37.21	17.20	20.01	0.00	0.00	-	-	-	-	-	-	-	-	-	-	-	-	
MW-8	12/21/2012	37.21	12.11	25.10	0.00	0.00	<50	<0.5	<0.5	<0.5	<0.5	2	-	<50	6	<0.5	<0.5	<0.5	
MW-8	04/01/2013 <sup>13</sup>	37.21	14.87	22.34	0.00	0.00	-	-	-	-	-	-	-	-	-	-	-	-	
MW-8	06/28/2013	37.21	16.46	20.75	0.00	0.00	350	<0.5	<0.5	0.5 J	0.6 J	9	-	<50	22	<0.5	<0.5	<0.5	
MW-8	09/20/2013 <sup>13</sup>	37.21	18.01	19.20	0.00	0.00	-	-	-	-	-	-	-	-	-	-	-	-	
MW-8	12/30/2013	37.21	19.43	17.78	0.00	0.00	820	<0.5	<0.5	<0.5	<0.5	3	-	<50	-	-	-	-	
MW-8	03/31/2014 <sup>13</sup>	37.21	14.40	22.81	0.00	0.00	-	-	-	-	-	-	-	-	-	-	-	-	
MW-8	06/30/2014	37.21	16.46	20.75	0.00	0.00	370	2	<0.5	<0.5	<0.5	3	-	<50	-	-	-	-	
MW-8	09/22/2014 <sup>13</sup>	37.21	19.21	18.00	0.00	0.00	-	-	-	-	-	-	-	-	-	-	-	-	
MW-8	12/23/2014	37.21	12.21	25.00	0.00	0.00	230	<0.5	<0.5	<0.5	<0.5	0.9 J	-	<50	<2	<0.5	<0.5	<0.5	
MW-8	03/05/2015 <sup>13</sup>	37.21	14.07	23.14	0.00	0.00	-	-	-	-	-	-	-	-	-	-	-	-	
MW-8	06/23/2015	37.21	17.70	19.51	0.00	0.00	250	1	<0.5	<0.5	<0.5	3	-	<50	7	<0.5	<0.5	<0.5	
MW-8	09/23/2015 <sup>13</sup>	37.21	20.22	16.99	0.00	0.00	-	-	-	-	-	-	-	-	-	-	-	-	
<b>MW-8</b>	<b>12/29/2015</b>	<b>37.21</b>	<b>17.01</b>	<b>20.20</b>	<b>0.00</b>	<b>0.00</b>	<b>450</b>	<b>0.9 J</b>	<b>&lt;0.5</b>	<b>&lt;0.5</b>	<b>&lt;0.5</b>	<b>&lt;0.5</b>	-	<b>&lt;50</b>	<b>&lt;2</b>	<b>&lt;0.5</b>	<b>&lt;0.5</b>	<b>&lt;0.5</b>	
MW-9	04/01/2002 <sup>6</sup>	35.03	10.62	24.41	0.00	0.00	94	1.5	<0.50	<0.50	<1.5	-	25/19 <sup>5</sup>	-	<100	<2	<2	<2	
MW-9	08/05/2002	35.03	14.85	20.18	0.00	0.00	<50	<0.50	<0.50	<0.50	<1.5	-	15 <sup>5</sup> /18	-	<100	<2	<2	<2	
MW-9	11/04/2002	35.03	17.48	17.55	0.00	0.00	<50	<0.50	1.7	<0.50	2.1	-	24/21 <sup>5</sup>	-	<100	<2	<2	<2	
MW-9	02/03/2003	35.03	12.51	22.52	0.00	0.00	<50	1.9	<0.50	<0.50	<1.5	-	17/16 <sup>5</sup>	-	<5	<0.5	<0.5	0.8	
MW-9	05/02/2003	35.03	11.68	23.35	0.00	0.00	<50	0.6	<0.5	<0.5	<1.5	-	21/18 <sup>5</sup>	-	<5	<0.5	<0.5	0.8	
MW-9	08/01/2003 <sup>7</sup>	35.03	14.69	20.34	0.00	0.00	<50	<0.5	<0.5	<0.5	<0.5	22	-	<50	7	0.9	<0.5	1	

Table 1

Groundwater Monitoring and Sampling Data  
 Former Chevron Service Station 93322  
 7225 Bancroft Avenue  
 Oakland, California

Location	Date	TOC	DTW	GWE	LNAPLT	LNAPL REMOVED	HYDROCARBONS		PRIMARY VOCS					ADDITIONAL VOCS					
							TPH-GRO	B	T	E	X	MTBE by SW6260	MTBE by VOC	Ethanol	TBA	DIPE	ETBE	TAME	
	Units	ft	ft	ft-amsl	ft	gal	µg/L	µg/L	µg/L	µg/L	µg/L	µg/L	µg/L	µg/L	µg/L	µg/L	µg/L	µg/L	µg/L
MW-9	11/21/2003 <sup>7</sup>	35.03	16.35	18.68	0.00	0.00	<50	<0.5	<0.5	<0.5	<0.5	18	-	<50	<5	0.8	<0.5	1	
MW-9	02/10/2004 <sup>7</sup>	35.03	11.69	23.34	0.00	0.00	210	7	0.5	1	1	31	-	<50	9	0.6	<0.5	2	
MW-9	05/11/2004 <sup>7</sup>	35.03	12.12	22.91	0.00	0.00	230	17	<0.5	<0.5	<0.5	72	-	<50	16	<0.5	<0.5	4	
MW-9	08/10/2004 <sup>7</sup>	35.03	14.58	20.45	0.00	0.00	250	5	<0.5	<0.5	<0.5	66	-	<50	<5	0.9	<0.5	3	
MW-9	11/08/2004	35.03	-	-	-	-	-	-	-	-	-	-	-	-	-	-	-	-	-
MW-9	02/21/2005 <sup>7</sup>	35.03	9.52	25.51	0.00	0.00	510	6	<0.5	1	3	79	-	<50	17	0.5	<0.5	4	
MW-9	05/10/2005 <sup>7</sup>	35.03	8.85	26.18	0.00	0.00	670	11	0.7	0.5	2	100	-	<50	20	<0.5	<0.5	4	
MW-9	08/12/2005 <sup>7</sup>	35.03	11.06	23.97	0.00	0.00	390	4	<0.5	<0.5	0.7	89	-	<50	18	<0.5	<0.5	4	
MW-9	11/11/2005 <sup>7</sup>	35.03	15.98	19.05	0.00	0.00	2,500	48	5	21	33	140	-	<50	25	<0.5	<0.5	6	
MW-9	02/20/2006 <sup>7</sup>	35.03	10.08	24.95	0.00	0.00	3,200	47	5	30	32	130	-	<50	22	<0.5	<0.5	5	
MW-9	05/12/2006 <sup>7</sup>	35.03	8.08	26.95	0.00	0.00	1,800	19	1	1	4	89	-	<50	14	<0.5	<0.5	4	
MW-9	08/14/2006	35.03	-	-	-	-	-	-	-	-	-	-	-	-	-	-	-	-	-
MW-9	11/08/2006	35.03	-	-	-	-	-	-	-	-	-	-	-	-	-	-	-	-	-
MW-9	02/07/2007 <sup>7</sup>	35.03	13.57	21.46	0.00	0.00	2,000	22	2	1	8	78	-	<50	14	<0.5	<0.5	3	
MW-9	05/07/2007 <sup>7</sup>	35.03	11.85	23.18	0.00	0.00	1,800	17	2	1	5	67	-	<50	13	<0.5	<0.5	3	
MW-9	08/03/2007	35.03	-	-	-	-	-	-	-	-	-	-	-	-	-	-	-	-	-
MW-9	10/12/2007 <sup>7</sup>	35.03	17.20	17.83	0.00	0.00	55	<0.5	<0.5	<0.5	<0.5	30	-	<50	4	<0.5	<0.5	1	
MW-9	11/02/2007 <sup>7</sup>	35.03	17.28	17.75	0.00	0.00	72	<0.5	<0.5	<0.5	0.9	57	-	<50	8	<0.5	<0.5	2	
MW-9	12/07/2007 <sup>7</sup>	35.03	17.12	17.91	0.00	0.00	<50	<0.5	<0.5	<0.5	<0.5	59	-	<50	9	<0.5	<0.5	2	
MW-9	02/01/2008 <sup>7</sup>	35.03	12.23	22.80	0.00	0.00	61	<0.5	<0.5	<0.5	<0.5	50	-	<50	11	<0.5	<0.5	2	
MW-9	05/09/2008	35.03	-	-	-	-	-	-	-	-	-	-	-	-	-	-	-	-	-
MW-9	05/16/2008 <sup>7</sup>	35.03	13.34	21.69	0.00	0.00	51	0.5	6	0.5	3	35	-	<50	11	<0.5	<0.5	1	
MW-9	08/22/2008 <sup>7</sup>	35.03	16.32	18.71	0.00	0.00	<50	<0.5	<0.5	<0.5	<0.5	35	-	<50	6	<0.5	<0.5	0.9	
MW-9	11/26/2008 <sup>7</sup>	35.03	17.84	17.19	0.00	0.00	<50	<0.5	<0.5	<0.5	<0.5	33	-	<50	4	<0.5	<0.5	0.7	
MW-9	05/20/2009	35.03	13.18	21.85	0.00	0.00	<50	<0.5	<0.5	<0.5	<0.5	18	-	<50	7	<0.5	<0.5	<0.5	
MW-9	08/26/2009	35.03	17.03	18.00	0.00	0.00	<50	<0.5	<0.5	<0.5	<0.5	26	-	<50	<2	<0.5	<0.5	<0.5	
MW-9	02/01/2010	35.03	11.69	23.34	0.00	0.00	<50	<0.5	<0.5	<0.5	<0.5	19	-	<50	9	<0.5	<0.5	<0.5	

Table 1

**Groundwater Monitoring and Sampling Data  
Former Chevron Service Station 93322  
7225 Bancroft Avenue  
Oakland, California**

Location	Date	TOC	DTW	GWE	LNAPLT	LNAPL REMOVED	HYDROCARBONS		PRIMARY VOCS					ADDITIONAL VOCS					
							TPH-GRO	B	T	E	X	MTBE by SW6260	MTBE by VOC	Ethanol	TBA	DIPE	ETBE	TAME	
	Units	ft	ft	ft-amsl	ft	gal	µg/L	µg/L	µg/L	µg/L	µg/L	µg/L	µg/L	µg/L	µg/L	µg/L	µg/L	µg/L	µg/L
MW-9	08/26/2010	35.03	12.60	22.43	0.00	0.00	<50	<0.5	<0.5	<0.5	<0.5	17	-	<50	9	<0.5	<0.5	<0.5	0.6 J
MW-9	11/11/2010 <sup>11</sup>	35.03	15.74	19.29	0.00	0.00	-	-	-	-	-	-	-	-	-	-	-	-	-
MW-9	02/10/2011 <sup>11</sup>	35.03	10.29	24.74	0.00	0.00	<50	<0.5	<0.5	<0.5	<0.5	12	-	<50	12	<0.5	<0.5	<0.5	<0.5
MW-9	06/17/2011 <sup>11</sup>	35.03	-	-	-	-	-	-	-	-	-	-	-	-	-	-	-	-	-
MW-9	09/08/2011 <sup>11</sup>	35.03	12.74	22.29	0.00	0.00	60 J	<0.5	<0.5	<0.5	<0.5	15	-	<50	-	-	-	-	-
MW-9	12/16/2011 <sup>11</sup>	35.03	14.60	20.43	0.00	0.00	-	-	-	-	-	-	-	-	-	-	-	-	-
MW-9	03/02/2012	35.03	14.43	20.60	0.00	0.00	83 J	<0.5	<0.5	<0.5	<0.5	10	-	<50	15	<0.5	<0.5	<0.5	<0.5
MW-9	06/08/2012 <sup>11</sup>	35.03	11.42	23.61	0.00	0.00	-	-	-	-	-	-	-	-	-	-	-	-	-
MW-9	09/14/2012	35.03	15.90	19.13	0.00	0.00	220	1	<0.5	<0.5	<0.5	17	-	<50	14	<0.5	<0.5	<0.5	<0.5
MW-9	12/21/2012 <sup>11</sup>	35.03	12.06	22.97	0.00	0.00	-	-	-	-	-	-	-	-	-	-	-	-	-
MW-9	04/01/2013	35.03	12.68	22.35	0.00	0.00	630	4	0.5 J	<0.5	1	11	-	<50	11	<0.5	<0.5	<0.5	<0.5
MW-9	06/28/2013 <sup>11</sup>	35.03	15.29	19.74	0.00	0.00	-	-	-	-	-	-	-	-	-	-	-	-	-
MW-9	09/20/2013	35.03	16.92	18.11	0.00	0.00	120	<0.5	<0.5	<0.5	<0.5	12	-	<50	-	-	-	-	-
MW-9	12/30/2013	35.03	18.24	16.79	0.00	0.00	-	-	-	-	-	-	-	-	-	-	-	-	-
MW-9	03/31/2014	35.03	14.20	20.83	0.00	0.00	<50	<0.5	<0.5	<0.5	<0.5	4	-	<50	4 J	<0.5	<0.5	<0.5	<0.5
MW-9	06/30/2014 <sup>13</sup>	35.03	15.51	19.52	0.00	0.00	-	-	-	-	-	-	-	-	-	-	-	-	-
MW-9	09/22/2014	35.03	18.21	16.82	0.00	0.00	<50	<0.5	<0.5	<0.5	<0.5	8	-	<50	<2	<0.5	<0.5	<0.5	<0.5
MW-9	12/23/2014 <sup>13</sup>	35.03	13.21	21.82	0.00	0.00	-	-	-	-	-	-	-	-	-	-	-	-	-
MW-9	03/05/2015	35.03	13.29	21.74	0.00	0.00	<50	<0.5	<0.5	<0.5	<0.5	6	-	<50	6	<0.5	<0.5	<0.5	<0.5
MW-9	06/23/2015 <sup>13</sup>	35.03	16.61	18.42	0.00	0.00	-	-	-	-	-	-	-	-	-	-	-	-	-
MW-9	09/23/2015	35.03	19.48	15.55	0.00	0.00	<50	<0.5	<0.5	<0.5	<0.5	8	-	<50	<2	<0.5	<0.5	<0.5	<0.5
<b>MW-9</b>	<b>12/29/2015<sup>11</sup></b>	<b>35.03</b>	<b>16.97</b>	<b>18.06</b>	<b>0.00</b>	<b>0.00</b>	-	-	-	-	-	-	-	-	-	-	-	-	-
MW-10	04/01/2002 <sup>6</sup>	35.53	11.72	23.81	0.00	0.00	<50	<0.50	<0.50	<0.50	<1.5	-	5 <sup>5</sup> /6.1	-	<100	<2	<2.0	<2	<2
MW-10	08/05/2002	35.53	15.80	19.73	0.00	0.00	<50	<0.50	<0.50	<0.50	<1.5	-	5.1/5 <sup>5</sup>	-	<100	<2	<2.0	<2	<2
MW-10	11/04/2002	35.53	18.31	17.22	0.00	0.00	<50	<0.50	<0.50	<0.50	<1.5	-	5.5/5 <sup>5</sup>	-	<100	<2	<2.0	<2	<2
MW-10	02/03/2003	35.53	13.42	22.11	0.00	0.00	<50	<0.50	<0.50	<0.50	<1.5	-	2.8/3 <sup>5</sup>	-	<5	<0.5	<0.5	<0.5	<0.5

Table 1

Groundwater Monitoring and Sampling Data  
 Former Chevron Service Station 93322  
 7225 Bancroft Avenue  
 Oakland, California

Location	Date	TOC	DTW	GWE	LNAPLT	LNAPL REMOVED	HYDROCARBONS		PRIMARY VOCs					ADDITIONAL VOCs					
							TPH-GRO	B	T	E	X	MTBE by SW8260	MTBE by VOC	Ethanol	TBA	DIPE	ETBE	TAME	
	Units	ft	ft	ft-amsl	ft	gal	µg/L	µg/L	µg/L	µg/L	µg/L	µg/L	µg/L	µg/L	µg/L	µg/L	µg/L	µg/L	µg/L
MW-10	05/02/2003	35.53	12.45	23.08	0.00	0.00	<50	<0.5	<0.5	<0.5	<1.5	-	<2.5/<0.5 <sup>5</sup>	-	<5	<0.5	<0.5	<0.5	<0.5
MW-10	08/01/2003 <sup>7</sup>	35.53	15.62	19.91	0.00	0.00	<50	<0.5	<0.5	<0.5	<0.5	2	-	<50.0	<5	<0.5	<0.5	<0.5	<0.5
MW-10	11/21/2003 <sup>7</sup>	35.53	17.26	18.27	0.00	0.00	<50	<0.5	<0.5	<0.5	<0.5	1	-	<50.0	<5	<0.50	<0.50	<0.50	<0.5
MW-10	02/10/2004 <sup>7</sup>	35.53	12.52	23.01	0.00	0.00	<50	<0.5	<0.5	<0.5	<0.5	<0.5	-	<50.0	<5	<0.50	<0.5	<0.5	<0.5
MW-10	05/11/2004 <sup>7</sup>	35.53	13.06	22.47	0.00	0.00	<50	<0.5	<0.5	<0.5	<0.5	1	-	<50	<5	<0.5	<0.5	<0.5	<0.5
MW-10	08/10/2004 <sup>7</sup>	35.53	15.45	20.08	0.00	0.00	<50	<0.5	<0.5	<0.5	<0.5	3	-	<50.0	<5	<0.5	<0.5	<0.5	<0.5
MW-10	11/08/2004 <sup>7</sup>	35.53	14.68	20.85	0.00	0.00	<50	<0.5	<0.5	0.9	5	<0.5	-	<50.0	<5	<0.5	<0.50	<0.5	<0.5
MW-10	02/21/2005 <sup>7</sup>	35.53	10.32	25.21	0.00	0.00	<50	<0.5	<0.5	<0.5	<0.5	<0.5	-	<50.0	<5	<0.5	<0.50	<0.5	<0.5
MW-10	05/10/2005 <sup>7</sup>	35.53	11.04	24.49	0.00	0.00	<50	<0.5	<0.5	<0.5	<0.5	1	-	<50.0	<5	<0.5	<0.50	<0.5	<0.5
MW-10	08/12/2005 <sup>7</sup>	35.53	12.58	22.95	0.00	0.00	<50	<0.5	<0.5	<0.5	<0.5	1	-	<50.0	<5	<0.5	<0.50	<0.5	<0.5
MW-10	11/11/2005 <sup>7</sup>	35.53	16.89	18.64	0.00	0.00	<50	<0.5	<0.5	<0.5	<0.5	5	-	<50.0	<5	<0.5	<0.50	<0.5	<0.5
MW-10	02/20/2006 <sup>7</sup>	35.53	10.91	24.62	0.00	0.00	<50	<0.5	<0.5	<0.5	<0.5	<0.5	-	<50.0	<5	<0.5	<0.50	<0.5	<0.5
MW-10	05/12/2006 <sup>7</sup>	35.53	9.26	26.27	0.00	0.00	<50	<0.5	<0.5	<0.5	<0.5	0.6	-	<50	<5	<0.5	<0.5	<0.5	<0.5
MW-10	08/14/2006 <sup>7</sup>	35.53	13.96	21.57	0.00	0.00	<50	<0.5	<0.5	<0.5	<0.5	2	-	<50.0	<5	<0.5	<0.5	<0.5	<0.5
MW-10	11/08/2006	35.53	-	-	-	-	-	-	-	-	-	-	-	-	-	-	-	-	-
MW-10	02/07/2007 <sup>7</sup>	35.53	14.45	21.08	0.00	0.00	<50	<0.5	<0.5	<0.5	<0.5	2	-	<50.0	<2	<0.5	<0.5	<0.5	<0.5
MW-10	05/07/2007 <sup>7</sup>	35.53	12.81	22.72	0.00	0.00	<50	<0.5	<0.5	<0.5	<0.5	0.9	-	<50.0	<2	<0.5	<0.5	<0.5	<0.5
MW-10	08/03/2007 <sup>7</sup>	35.53	16.35	19.18	0.00	0.00	<50	<0.5	<0.5	<0.5	<0.5	3	-	<50	<2	<0.5	<0.5	<0.5	<0.5
MW-10	10/12/2007 <sup>7</sup>	35.53	17.93	17.60	0.00	0.00	<50	<0.5	<0.5	<0.5	<0.5	5	-	<50	<2	<0.5	<0.5	<0.5	<0.5
MW-10	11/02/2007 <sup>7</sup>	35.53	18.04	17.49	0.00	0.00	<50	<0.5	<0.5	<0.5	<0.5	4	-	<50	<2	<0.5	<0.5	<0.5	<0.5
MW-10	12/07/2007 <sup>7</sup>	35.53	17.81	17.72	0.00	0.00	<50	<0.5	<0.5	<0.5	<0.5	3	-	<50	<2	<0.5	<0.50	<0.5	<0.5
MW-10	02/01/2008 <sup>7</sup>	35.53	13.35	22.18	0.00	0.00	<50	<0.5	<0.5	<0.5	<0.5	<0.5	-	<50	<2	<0.5	<0.50	<0.5	<0.5
MW-10	05/09/2008 <sup>7</sup>	35.53	14.11	21.42	0.00	0.00	<50	<0.5	<0.5	<0.5	<0.5	2	-	<50	<2	<0.50	<0.50	<0.5	<0.5
MW-10	08/22/2008 <sup>7</sup>	35.53	17.70	17.83	0.00	0.00	<50	<0.5	<0.5	<0.5	<0.5	5	-	<50	<2	<0.5	<0.50	<0.5	<0.5
MW-10	11/26/2008 <sup>7</sup>	35.53	18.61	16.92	0.00	0.00	<50	<0.5	<0.5	<0.5	<0.5	4	-	<50	<2	<0.5	<0.5	<0.5	<0.5
MW-10	05/20/2009	35.53	14.03	21.50	0.00	0.00	<50	<0.5	<0.5	<0.5	<0.5	3	-	<50	<2	<0.5	<0.5	<0.5	<0.5
MW-10	08/26/2009	35.53	17.81	17.72	0.00	0.00	<50	<0.5	<0.5	<0.5	<0.5	4	-	<50	<2	<0.5	<0.5	<0.5	<0.5

Table 1

**Groundwater Monitoring and Sampling Data  
Former Chevron Service Station 93322  
7225 Bancroft Avenue  
Oakland, California**

Location	Date	TOC	DTW	GWE	LNAPLT	LNAPL REMOVED	HYDROCARBONS		PRIMARY VOCS					ADDITIONAL VOCS					
							TPH-GRO	B	T	E	X	MTBE by SW6260	MTBE by VOC	Ethanol	TBA	DIPE	ETBE	TAME	
	Units	ft	ft	ft-amsl	ft	gal	µg/L	µg/L	µg/L	µg/L	µg/L	µg/L	µg/L	µg/L	µg/L	µg/L	µg/L	µg/L	µg/L
MW-10	02/01/2010	35.53	12.36	23.17	0.00	0.00	<50	<0.5	<0.5	<0.5	<0.5	1	-	<50	<2	<0.5	<0.5	<0.5	<0.5
MW-10	08/26/2010	35.53	14.15	21.38	0.00	0.00	<50	<0.5	<0.5	<0.5	<0.5	1	-	<50	<2	<0.5	<0.5	<0.5	<0.5
MW-10	11/11/2010 <sup>11</sup>	35.53	16.09	19.44	0.00	0.00	-	-	-	-	-	-	-	-	-	-	-	-	-
MW-10	02/10/2011 <sup>11</sup>	35.53	12.02	23.51	0.00	0.00	<50	<0.5	<0.5	<0.5	<0.5	0.7 J	-	<50	<2	<0.5	<0.5	<0.5	<0.5
MW-10	06/17/2011 <sup>11</sup>	35.53	-	-	-	-	-	-	-	-	-	-	-	-	-	-	-	-	-
MW-10	09/08/2011 <sup>11</sup>	35.53	14.31	21.22	0.00	0.00	<50	<0.5	<0.5	<0.5	<0.5	0.5 J	-	<50	-	-	-	-	-
MW-10	12/16/2011 <sup>11</sup>	35.53	15.41	20.12	0.00	0.00	-	-	-	-	-	-	-	-	-	-	-	-	-
MW-10	03/02/2012	35.53	15.28	20.25	0.00	0.00	<50	<0.5	<0.5	<0.5	<0.5	1	-	<50	<2	<0.5	<0.5	<0.5	<0.5
MW-10	06/08/2012 <sup>11</sup>	35.53	12.84	22.69	0.00	0.00	-	-	-	-	-	-	-	-	-	-	-	-	-
MW-10	09/14/2012	35.53	16.63	18.90	0.00	0.00	<50	<0.5	<0.5	1	6	2	-	<50	<2	<0.5	<0.5	<0.5	<0.5
MW-10	12/21/2012 <sup>11</sup>	35.53	12.76	22.77	0.00	0.00	-	-	-	-	-	-	-	-	-	-	-	-	-
MW-10	04/01/2013	35.53	14.37	21.16	0.00	0.00	<50	<0.5	<0.5	<0.5	<0.5	1	-	<50	<2	<0.5	<0.5	<0.5	<0.5
MW-10	06/28/2013 <sup>11</sup>	35.53	16.03	19.50	0.00	0.00	-	-	-	-	-	-	-	-	-	-	-	-	-
MW-10	09/20/2013	35.53	17.88	17.65	0.00	0.00	<50	<0.5	<0.5	<0.5	<0.5	2	-	<50	-	-	-	-	-
MW-10	12/30/2013	35.53	19.05	16.48	0.00	0.00	-	-	-	-	-	-	-	-	-	-	-	-	-
MW-10	03/31/2014	35.53	15.40	20.13	0.00	0.00	<50	<0.5	<0.5	<0.5	<0.5	0.8 J	-	<50	<2	<0.5	<0.5	<0.5	<0.5
MW-10	06/30/2014 <sup>13</sup>	35.53	16.22	19.31	0.00	0.00	-	-	-	-	-	-	-	-	-	-	-	-	-
MW-10	09/22/2014	35.53	18.97	16.56	0.00	0.00	<50	<0.5	<0.5	<0.5	<0.5	2	-	<50	<2	<0.5	<0.5	<0.5	<0.5
MW-10	12/23/2014 <sup>13</sup>	35.53	13.54	21.99	0.00	0.00	-	-	-	-	-	-	-	-	-	-	-	-	-
MW-10	03/05/2015	35.53	14.41	21.12	0.00	0.00	<50	<0.5	<0.5	<0.5	<0.5	2	-	<50	<2	<0.5	<0.5	<0.5	<0.5
MW-10	06/23/2015 <sup>13</sup>	35.53	17.41	18.12	0.00	0.00	-	-	-	-	-	-	-	-	-	-	-	-	-
MW-10	09/23/2015	35.53	20.18	15.35	0.00	0.00	<50	<0.5	<0.5	<0.5	<0.5	2	-	<50	<2	<0.5	<0.5	<0.5	<0.5
<b>MW-10</b>	<b>12/29/2015<sup>11</sup></b>	<b>35.53</b>	<b>17.62</b>	<b>17.91</b>	<b>0.00</b>	<b>0.00</b>	-	-	-	-	-	-	-	-	-	-	-	-	-
QA	11/21/2001	-	-	-	-	-	<50	<0.50	<0.50	<0.50	<1.5	-	<2.5	-	-	-	-	-	-
QA	02/05/2002	-	-	-	-	-	<50	<0.50	<0.50	<0.50	<1.5	-	<2.5	-	-	-	-	-	-
QA	04/01/2002	-	-	-	-	-	<50	<0.50	<0.50	<0.50	<1.5	-	<2.5	-	-	-	-	-	-



**Table 1**  
**Groundwater Monitoring and Sampling Data**  
**Former Chevron Service Station 93322**  
**7225 Bancroft Avenue**  
**Oakland, California**

Location	Date	TOC	DTW	GWE	LNAPLT	LNAPL REMOVED	HYDROCARBONS		PRIMARY VOCS					ADDITIONAL VOCS					
							TPH-GRO	B	T	E	X	MTBE by SW6260	MTBE by VOC	Ethanol	TBA	DIPE	ETBE	TAME	
	Units	ft	ft	ft-amsl	ft	gal	µg/L	µg/L	µg/L	µg/L	µg/L	µg/L	µg/L	µg/L	µg/L	µg/L	µg/L	µg/L	µg/L
QA	08/05/2002	-	-	-	-	-	<50	<0.50	<0.50	<0.50	<1.5	-	<2.5	-	-	-	-	-	-
QA	10/04/2002	-	-	-	-	-	<50	<0.50	<0.50	<0.50	<1.5	-	<2.5	-	-	-	-	-	-
QA	02/03/2003	-	-	-	-	-	<50	<0.50	<0.50	<0.50	<1.5	-	<2.5	-	-	-	-	-	-
QA	05/02/2003	-	-	-	-	-	<50	<0.5	<0.5	<0.5	<1.5	-	<2.5	-	-	-	-	-	-
QA	08/01/2003 <sup>7</sup>	-	-	-	-	-	<50	<0.5	<0.5	<0.5	<0.5	<0.5	-	-	-	-	-	-	-
QA	11/21/2003 <sup>7</sup>	-	-	-	-	-	<50	<0.5	<0.5	<0.5	<0.5	<0.5	-	-	-	-	-	-	-
QA	02/10/2004 <sup>7</sup>	-	-	-	-	-	<50	<0.5	<0.5	<0.5	<0.5	<0.5	-	-	-	-	-	-	-
QA	05/11/2004 <sup>7</sup>	-	-	-	-	-	<50	<0.5	<0.5	<0.5	<0.5	<0.5	-	-	-	-	-	-	-
QA	08/10/2004 <sup>7</sup>	-	-	-	-	-	<50	<0.5	<0.5	<0.5	<0.5	<0.5	-	-	-	-	-	-	-
QA	11/08/2004 <sup>7</sup>	-	-	-	-	-	<50	<0.5	<0.5	<0.5	<0.5	<0.5	-	-	-	-	-	-	-
QA	02/21/2005 <sup>7</sup>	-	-	-	-	-	<50	<0.5	<0.5	<0.5	<0.5	<0.5	-	-	-	-	-	-	-
QA	05/10/2005 <sup>7</sup>	-	-	-	-	-	<50	<0.5	<0.5	<0.5	<0.5	<0.5	-	-	-	-	-	-	-
QA	08/12/2005 <sup>7</sup>	-	-	-	-	-	<50	<0.5	<0.5	<0.5	<0.5	<0.5	-	-	-	-	-	-	-
QA	11/11/2005 <sup>7</sup>	-	-	-	-	-	<50	<0.5	<0.5	<0.5	<0.5	<0.5	-	-	-	-	-	-	-
QA	02/20/2006 <sup>7</sup>	-	-	-	-	-	<50	<0.5	<0.5	<0.5	<0.5	<0.5	-	-	-	-	-	-	-
QA	05/12/2006 <sup>7</sup>	-	-	-	-	-	<50	<0.5	0.5 <sup>9</sup>	<0.5	<0.5	<0.5	-	-	-	-	-	-	-
QA	08/14/2006 <sup>7</sup>	-	-	-	-	-	<50	<0.5	<0.5	<0.5	<0.5	<0.5	-	-	-	-	-	-	-
QA	11/08/2006 <sup>7</sup>	-	-	-	-	-	<50	<0.5	<0.5	<0.5	<0.5	<0.5	-	-	-	-	-	-	-
QA	02/07/2007 <sup>7</sup>	-	-	-	-	-	<50	<0.5	<0.5	<0.5	<0.5	<0.5	-	-	-	-	-	-	-
QA	05/07/2007 <sup>7</sup>	-	-	-	-	-	<50	<0.5	<0.5	<0.5	<0.5	<0.5	-	-	-	-	-	-	-
QA	08/03/2007 <sup>7</sup>	-	-	-	-	-	<50	<0.5	<0.5	<0.5	<0.5	<0.5	-	-	-	-	-	-	-
QA	10/12/2007 <sup>7</sup>	-	-	-	-	-	<50	<0.5	<0.5	<0.5	<0.5	<0.5	-	-	-	-	-	-	-
QA	11/02/2007 <sup>7</sup>	-	-	-	-	-	<50	<0.5	<0.5	<0.5	<0.5	<0.5	-	-	-	-	-	-	-
QA	12/07/2007 <sup>7</sup>	-	-	-	-	-	<50	<0.5	<0.5	<0.5	<0.5	<0.5	-	-	-	-	-	-	-
QA	02/01/2008 <sup>7</sup>	-	-	-	-	-	<50	<0.5	<0.5	<0.5	<0.5	<0.5	-	-	-	-	-	-	-
QA	05/09/2008 <sup>7</sup>	-	-	-	-	-	<50	<0.5	<0.5	<0.5	<0.5	<0.5	-	-	-	-	-	-	-
QA	05/16/2008 <sup>7</sup>	-	-	-	-	-	<50	<0.5	<0.5	<0.5	<0.5	<0.5	-	-	-	-	-	-	-

Table 1

Groundwater Monitoring and Sampling Data  
 Former Chevron Service Station 93322  
 7225 Bancroft Avenue  
 Oakland, California

Location	Date	TOC	DTW	GWE	LNAPLT	LNAPL REMOVED	HYDROCARBONS		PRIMARY VOCS					ADDITIONAL VOCS					
							TPH-GRO	B	T	E	X	MTBE by SW8260	MTBE by VOC	Ethanol	TBA	DIPE	ETBE	TAME	
	Units	ft	ft	ft-amsl	ft	gal	µg/L	µg/L	µg/L	µg/L	µg/L	µg/L	µg/L	µg/L	µg/L	µg/L	µg/L	µg/L	µg/L
QA	08/22/2008 <sup>7</sup>	-	-	-	-	-	<50	<0.5	<0.5	<0.5	<0.5	<0.5	-	-	-	-	-	-	-
QA	11/26/2008 <sup>7</sup>	-	-	-	-	-	<50	<0.5	<0.5	<0.5	<0.5	<0.5	-	-	-	-	-	-	-
QA	05/20/2009	-	-	-	-	-	<50	<0.5	<0.5	<0.5	<0.5	<0.5	-	-	-	-	-	-	-
QA	08/26/2009	-	-	-	-	-	<50	<0.5	<0.5	<0.5	<0.5	<0.5	-	-	-	-	-	-	-
QA	11/12/2009	-	-	-	-	-	<50	<0.5	<0.5	<0.5	<0.5	<0.5	-	-	-	-	-	-	-
QA	02/01/2010	-	-	-	-	-	<50	<0.5	<0.5	<0.5	<0.5	<0.5	-	<50	-	-	-	-	-
QA	05/17/2010	-	-	-	-	-	<50	<0.5	<0.5	<0.5	<0.5	<0.5	-	-	-	-	-	-	-
QA	08/26/2010	-	-	-	-	-	<50	<0.5	<0.5	<0.5	<0.5	<0.5	-	-	-	-	-	-	-
QA	11/11/2010	-	-	-	-	-	<50	<0.5	<0.5	<0.5	<0.5	<0.5	-	-	-	-	-	-	-
QA	02/10/2011	-	-	-	-	-	<50	<0.5	<0.5	<0.5	<0.5	<0.5	-	-	-	-	-	-	-
QA	06/17/2011	-	-	-	-	-	<50	<0.5	<0.5	<0.5	<0.5	<0.5	-	-	-	-	-	-	-
QA	09/08/2011	-	-	-	-	-	<50	<0.5	<0.5	<0.5	<0.5	<0.5	-	<50	-	-	-	-	-
QA	12/16/2011	-	-	-	-	-	<50	<0.5	<0.5	<0.5	<0.5	<0.5	-	-	-	-	-	-	-
QA	03/02/2012	-	-	-	-	-	<50	<0.5	<0.5	<0.5	<0.5	<0.5	-	-	-	-	-	-	-
QA	06/08/2012	-	-	-	-	-	<50	<0.5	<0.5	<0.5	<0.5	<0.5	-	-	-	-	-	-	-
QA	09/14/2012	-	-	-	-	-	<50	<0.5	<0.5	<0.5	<0.5	<0.5	-	-	-	-	-	-	-
QA	12/21/2012	-	-	-	-	-	<50	<0.5	<0.5	<0.5	<0.5	<0.5	-	-	-	-	-	-	-
QA	04/01/2013	-	-	-	-	-	<50	<0.5	<0.5	<0.5	<0.5	<0.5	-	-	-	-	-	-	-
QA	06/28/2013	-	-	-	-	-	<50	<0.5	<0.5	<0.5	<0.5	<0.5	-	-	-	-	-	-	-
QA	09/20/2013	-	-	-	-	-	<50	<0.5	<0.5	<0.5	<0.5	<0.5	-	-	-	-	-	-	-
QA	12/30/2013	-	-	-	-	-	<50	<0.5	<0.5	<0.5	<0.5	<0.5	-	-	-	-	-	-	-
QA	03/31/2014	-	-	-	-	-	<50	<0.5	<0.5	<0.5	<0.5	<0.5	-	-	-	-	-	-	-
QA	06/30/2014	-	-	-	-	-	<50	<0.5	<0.5	<0.5	<0.5	<0.5	-	-	-	-	-	-	-
QA	09/22/2014	-	-	-	-	-	<50	<0.5	<0.5	<0.5	<0.5	<0.5	-	-	-	-	-	-	-
QA	12/23/2014	-	-	-	-	-	<50	<0.5	<0.5	<0.5	<0.5	<0.5	-	-	-	-	-	-	-
QA	03/05/2015	-	-	-	-	-	<50	<0.5	<0.5	<0.5	<0.5	<0.5	-	-	-	-	-	-	-
QA	06/23/2015	-	-	-	-	-	<50	<0.5	<0.5	<0.5	<0.5	<0.5	-	-	-	-	-	-	-

Table 1

**Groundwater Monitoring and Sampling Data  
Former Chevron Service Station 93322  
7225 Bancroft Avenue  
Oakland, California**

Location	Date	TOC	DTW	GWE	LNAPLT	LNAPL REMOVED	HYDROCARBONS		PRIMARY VOCS					ADDITIONAL VOCS					
							TPH-GRO	B	T	E	X	MTBE by SW8260	MTBE by VOC	Ethanol	TBA	DIPE	ETBE	TAME	
	Units	ft	ft	ft-amsl	ft	gal	µg/L	µg/L	µg/L	µg/L	µg/L	µg/L	µg/L	µg/L	µg/L	µg/L	µg/L	µg/L	µg/L
QA	09/23/2015	-	-	-	-	-	<50	<0.5	<0.5	<0.5	<0.5	<0.5	-	-	-	-	-	-	-
QA	12/29/2015	-	-	-	-	-	<22	<0.5	<0.5	<0.5	<0.5	-	-	-	-	-	-	-	-
TRIP BLANK	02/08/1998	-	-	-	-	-	<50	<0.5	<0.5	<0.5	<0.5	-	<2.5	-	-	-	-	-	-
TRIP BLANK	06/16/1998	-	-	-	-	-	<50	<0.5	<0.5	<0.5	<0.5	-	<2.5	-	-	-	-	-	-
TRIP BLANK	07/29/1998	-	-	-	-	-	<50	<0.5	<0.5	<0.5	<0.5	-	<2.5	-	-	-	-	-	-
TRIP BLANK	08/13/1998	-	-	-	-	-	<50	<0.5	<0.5	<0.5	<0.5	-	<2.5	-	-	-	-	-	-
TRIP BLANK	11/24/1998	-	-	-	-	-	<50	<0.5	<0.5	<0.5	<0.5	-	<2.5	-	-	-	-	-	-
TRIP BLANK	02/02/1999	-	-	-	-	-	<50	<0.5	<0.5	<0.5	<0.5	-	<2.5	-	-	-	-	-	-
TRIP BLANK	02/03/1999	-	-	-	-	-	<50	<0.5	<0.5	<0.5	<0.5	-	<2.5	-	-	-	-	-	-
TRIP BLANK	06/07/1999	-	-	-	-	-	<50	<0.5	<0.5	<0.5	<0.5	-	<2.5	-	-	-	-	-	-
TRIP BLANK	09/07/1999	-	-	-	-	-	<50	<0.5	<0.5	<0.5	<0.5	-	<5.0	-	-	-	-	-	-
TRIP BLANK	10/27/1999	-	-	-	-	-	<50	<0.5	<0.5	<0.5	<0.5	-	<2.5	-	-	-	-	-	-
TRIP BLANK	02/08/2000	-	-	-	-	-	<50	<0.5	<0.5	<0.5	<0.5	-	<5.0	-	-	-	-	-	-
TRIP BLANK	05/05/2000	-	-	-	-	-	<50	<0.50	<0.50	<0.50	<0.50	-	<2.5	-	-	-	-	-	-
TRIP BLANK	07/28/2000	-	-	-	-	-	<50	<0.50	<0.50	<0.50	<0.50	-	<2.5	-	-	-	-	-	-
TRIP BLANK	11/26/2000	-	-	-	-	-	<50	<0.50	<0.50	<0.50	<0.50	-	<2.5	-	-	-	-	-	-
TRIP BLANK	02/09/2001	-	-	-	-	-	<50.0	<0.500	<0.500	<0.500	<0.500	-	<2.50	-	-	-	-	-	-
TRIP BLANK	05/11/2001	-	-	-	-	-	<50	<0.50	<0.50	<0.50	<0.50	-	<2.5	-	-	-	-	-	-
TRIP BLANK	08/30/2001	-	-	-	-	-	<50	<0.50	<0.50	<0.50	<0.50	-	<2.5	-	-	-	-	-	-

**Abbreviations and Notes:**

TOC = Top of casing  
 DTW = Depth to water  
 GWE = Groundwater elevation  
 (ft-amsl) = Feet above mean sea level  
 ft = Feet

Table 1

**Groundwater Monitoring and Sampling Data  
Former Chevron Service Station 93322  
7225 Bancroft Avenue  
Oakland, California**

Location	Date	TOC	DTW	GWE	LNAPLT	LNAPL REMOVED	HYDROCARBONS		PRIMARY VOCS					ADDITIONAL VOCS				
							TPH-GRO	B	T	E	X	MTBE by SW8260	MTBE by VOC	Ethanol	TBA	DIPE	ETBE	TAME
Units		ft	ft	ft-amsl	ft	gal	µg/L	µg/L	µg/L	µg/L	µg/L	µg/L	µg/L	µg/L	µg/L	µg/L	µg/L	µg/L

µg/L = Micrograms per liter

TPH-GRO = Total petroleum hydrocarbons - gasoline range organics

VOCS = Volatile organic compounds

B = Benzene

T = Toluene

E = Ethylbenzene

X = Xylenes (Total)

MTBE = Methyl tert butyl ether

TBA = Tert-butyl alcohol

DIPE = Diisopropyl ether

ETBE = Tert-butyl ethyl ether

TAME = Tert-amyl methyl ether

J = Estimated value (the result method result > the detection limit < the limit of quantitation)

-- = Not available / not applicable

<x = Not detected above laboratory method detection limit

\* TOC elevations were re-surveyed on May 31, 2005, by Morrow Surveying Land Surveyors using the previous benchmark. TOC elevations were surveyed in April 2002, by Morrow Surveying. Elevations are based on City of Oakland Benchmark designated 3787 in field book 1595, page 50; cut square northerly curb on Krause Ave., approx. 37 feet westerly of PL westerly of 73rd Ave., (Elevation = 33.82 feet).

\*\* GWE corrected for the presence of LNAPL; correction factor: [(TOC - DTW) + (LNAPLT x 0.8)].

1 Confirmation run.

2 Laboratory report indicates gasoline C6-C12.

3 Laboratory report indicates weathered gasoline C6-C12.

4 Product and water removed.

5 MTBE by EPA Method 8260.

6 Well development performed.

7 BTEX and MTBE by EPA Method 8260.

8 Laboratory report indicates the trip blank results were investigated and the source of contamination did not occur during analysis.

9 Product removed; no water removed.

Table 1

**Groundwater Monitoring and Sampling Data  
Former Chevron Service Station 93322  
7225 Bancroft Avenue  
Oakland, California**

Location	Date	TOC	DTW	GWE	LNAPL	LNAPL REMOVED	HYDROCARBONS		PRIMARY VOCS					ADDITIONAL VOCS					
							TPH-GRO	B	T	E	X	MTBE by SW6260	MTBE by VOC	Ethanol	TBA	DIPE	ETBE	TAME	
	Units	ft	ft	ft-amsl	ft	gal	µg/L	µg/L	µg/L	µg/L	µg/L	µg/L	µg/L	µg/L	µg/L	µg/L	µg/L	µg/L	µg/L

- 10 Laboratory report indicates the value for the TPH-GRO is estimated because the value is over the calibration range of the system. The surrogate recovery is outside the upper statistical QC limit. The sample was not reanalyzed because the hold time had ex
- 11 Sampled semi-annually.
- 12 Unable to access well due to large donation bin located on well.
- 13 Gauged only.
- 14 Inaccessible
- 15 SPH present
- 16 Unable to access well - car parked over well

# **Attachment A**

## **Monitoring Data Package**



December 30, 2015

Chevron Environmental Management Company  
Dave Patten  
6101 Bollinger Canyon Rd.  
San Ramon, CA 94583

Fourth Quarter 2015 Monitoring at  
Former Chevron Service Station 93322  
7225 Bancroft Ave.  
Oakland, CA

Monitoring performed on December 29, 2015

---

**Blaine Tech Services, Inc. Groundwater Monitoring Event 151229-JG2**

This submission covers the routine monitoring of groundwater wells conducted on December 29, 2015 at this location. Nine monitoring wells were measured for depth to groundwater (DTW). Six monitoring wells were sampled. All sampling activities were performed in accordance with local, state and federal guidelines.

Water levels measurements were collected using an electronic slope indicator. All sampled wells were purged of three case volumes, depending on well recovery, or until water temperature, pH and conductivity stabilized. Purging was accomplished using electric submersible pumps, positive air displacement pumps, or stainless steel, Teflon, or disposable bailers. Subsequent sample collection and sample handling was performed in accordance with EPA protocols. Alternately, where applicable, wells were sampled utilizing no-purge methodology. All reused equipment was decontaminated in an integrated stainless steel sink with de-ionized water supplied Hotsy pressure washer and Liquinox or equivalent.

Fourth Quarter Groundwater Monitoring at Chevron 93322, 7225 Bancroft Ave., Oakland, CA

SAN JOSE

SACRAMENTO

LOS ANGELES

SAN DIEGO

1680 ROGERS AVENUE

SAN JOSE, CA 95112-1105

(408) 573-0555

FAX (408) 573-7771

LIC. 746684

[www.blainetech.com](http://www.blainetech.com)

Samples were delivered under chain-of-custody to Lancaster Laboratories of Lancaster, Pennsylvania, for analysis. Monitoring well purgewater and equipment rinsate water was collected and transported under bill-of-lading to Blaine Tech of San Jose, California.

Enclosed documentation from this event includes copies of the Well Gauging Sheet, Well Monitoring Data Sheets, and Chain-of-Custody.

Blaine Tech Services, Inc.'s activities at this site consisted of objective data and sample collection only. No interpretation of analytical results, defining of hydrogeologic conditions or formulation of recommendations was performed.

Please call if you have any questions.

Sincerely,



Dustin Becker  
Blaine Tech Services, Inc.  
Senior Project Manager

attachments: SOP  
Well Gauging Sheet  
Individual Well Monitoring Data Sheets  
Wellhead Inspection Form  
Bill of Lading  
Calibration Log

cc: GHD  
Attn: Nathan Lee  
2300 Clayton Rd., Suite 920  
Concord, CA 94520

Fourth Quarter Groundwater Monitoring at Chevron 93322, 7225 Bancroft Ave., Oakland, CA

SAN JOSE

SACRAMENTO

LOS ANGELES

SAN DIEGO

1680 ROGERS AVENUE

SAN JOSE, CA 95112-1105

(408) 573-0555

FAX (408) 573-7771

LIC. 746684

www.blainetech.com



# BLAINE TECH SERVICES, INC. METHODS AND PROCEDURES FOR THE ROUTINE MONITORING OF GROUNDWATER WELLS AT CHEVRON SITES

Blaine Tech Services, Inc. performs environmental sampling and documentation as an independent third party. We specialize in groundwater monitoring assignments and intentionally limit the scope of our services to those centered on the generation of objective information.

To avoid conflicts of interest, Blaine Tech Services, Inc. personnel do not evaluate or interpret the information we collect. As a state licensed contractor (C-57 well drilling –water – 746684) performing strictly technical services, we do not make any professional recommendations and perform no consulting of any kind.

---

## **SAMPLING PROCEDURES OVERVIEW**

### **SAFETY**

All groundwater monitoring assignments performed for Chevron comply with Chevron's safety guidelines, 29 CFR 1910.120 and SB-198 Injury and Illness Prevention Program (IIPP). All Field Technicians receive the full 40-hour 29CFR 1910.120 OSHA SARA HAZWOPER course, medical clearance and on-the-job training prior to commencing any work on any Chevron site.

### **INSPECTION AND GAUGING**

Wells are inspected prior to evacuation and sampling. The condition of the wellhead is checked and noted according to a wellhead inspection checklist.

Standard measurements include the depth to water (DTW) and the total well depth (TD) obtained with industry standard electronic water level indicators that are graduated in increments of hundredths of a foot.

The water in each well is inspected for the presence of immiscibles. When free product is suspected, its presence is confirmed using an electronic interface probe (e.g. GeoTech). No samples are collected from a well containing product.

### **TRADITIONAL PURGING & SAMPLING**

#### **Evacuation**

Depth to water measurements are collected by our personnel prior to purging and minimum purge volumes are calculated anew for each well based on the height of the water column and the diameter of the well. Expected purge volumes are never less than three case volumes and are set at no less than four case volumes in some jurisdictions.

Well purging devices are selected on the basis of the well diameter and the total volume to be evacuated. In most cases the well will be purged using an electric submersible pump (i.e. Grundfos) suspended near (but not touching) the bottom of the well.

## **Parameter Stabilization**

Well purging completion standards include minimum purge volumes, but additionally require stabilization of specific groundwater parameters prior to sample collection. Typical groundwater parameters used to measure stability are electrical conductivity, pH, and temperature. Instrument readings are obtained at regular intervals during the evacuation process (no less than once per case volume).

Stabilization standards for routine quarterly monitoring of fuel sites include the following: Temperature is considered to have stabilized when successive readings do not fluctuate more than +/- 1 degree Celsius. Electrical conductivity is considered stable when successive readings are within 10%. pH is considered to be stable when successive readings remain constant or vary no more than 0.2 of a pH unit.

## **Sample Collection**

All samples are collected using disposable bailers.

## **Sample Containers**

Sample material is decanted directly from the sampling bailer into sample containers provided by the laboratory that will analyze the samples. The transfer of sample material from the bailer to the sample container conforms to specifications contained in the USEPA T.E.G.D. The type of sample container, material of construction, method of closure and filling requirements are specific to the intended analysis. Chemicals needed to preserve the sample material are commonly placed inside the sample containers by the laboratory or glassware vendor prior to delivery of the bottle to our personnel. The laboratory sets the number of replicate containers.

## **Dewatered Wells**

Normal evacuation removes no less than three case volumes of water from the well. However, less water may be removed in cases where the well dewateres and does not immediately recharge.

## **Measuring Recharge**

Upon completion of well purging, a depth to water measurement is collected and notated to ensure that the well has recharged to within 80% of its static, pre-purge level prior to sampling.

Wells that do not immediately show 80% recharge or dewatered wells will be allowed approximately 2 hours to recharge prior to sampling or will be sampled at site departure. All wells requiring off-site traffic control in the public right-of-way, the 80% recharge rule may be disregarded in the interests of Health and Safety. The sample may be collected as soon as there is sufficient water. The water level at time of sampling will be noted.

## **Dissolved Oxygen Measurements**

Dissolved Oxygen readings are taken pre- and/or post-purge using YSI meters (e.g. YSI Model 550) or HACH field test kits.

The YSI meters are able to collect accurate in-situ readings. The probe allows downhole measurements to be taken from wells with diameters as small as two inches. The probe and reel is decontaminated between wells as described above. The meter is calibrated

as per the instructions in the operating manual. The probe is lowered into the water column and the reading is allowed to stabilize prior to collection.

### **Oxidation Reduction Potential Measurements (ORP)**

All readings are obtained with either Corning or Myron-L meters (e.g. Corning ORP-65 or a Myron-L Ultrameter). The meter is cleaned between wells as described above. The meter is calibrated at the start of each day according to the instruction manual.

## **LOW FLOW SAMPLING USING SAMPLE-PRO BLADDER PUMP**

### **Calibration**

Calibrate YSI Flow Cell as per manufacturer's specifications. Thoroughly rinse probe and cup between parameters. Calibration order as follows:

1. pH (use 3-point calibration of 7, 4, 10)
2. Specific Conductance
3. Temperature

### **Purging & Sampling Collection**

1. Insert new bladder into Sample-Pro pump housing.
2. Remove dedicated PE tubing from the well or start with new PE tubing cut to the required length.
3. Attach the PE tubing to the Sample-Pro Bladder Pump.
4. Gently lower the Sample-Pro Bladder Pump, and PE tubing into the well, placing the Sample-Pro Bladder Pump intake at the specified screened interval. Take care to minimize disturbance to the water column.
5. Direct effluent line into YSI 556 Flow Cell.
6. Set Sample-Pro Bladder Pump speed at 100 - 500 ml/min.
7. Collect water quality parameter measurements for temperature, pH, conductivity, turbidity, DO and ORP every 3-5 minutes.
8. Monitor drawdown during purging with electronic water level meter. Record water level with each parameter measurement. **MAXIMUM DRAWDOWN IS 0.33 FEET.**
9. Collect parameter measurements until stability is achieved. Stability is defined as three consecutive measurements where:

Temp	± 1° Celsius
pH	± 0.1
Conductivity	± 3%

10. Sample may be collected once one system has been removed and stability readings have been achieved after the system volume has been removed.
11. Disconnect effluent line from YSI 556 Flow Cell.
12. Sample through effluent line while maintaining constant flow rate.
13. Remove Sample-Pro Bladder Pump, and PE tubing from well.
14. Detach and reinstall dedicated PE tubing in well.

## **PURGEWATER CONTAINMENT**

All non-hazardous purgewater evacuated from each groundwater monitoring well is captured and contained in on-board storage tanks on the Sampling Vehicle and/or special water hauling trailers. Effluent from the decontamination of reusable apparatus (sounders, electric pumps and hoses etc.), consisting of groundwater combined with deionized water and non-phosphate soap, is also captured and pumped into effluent tanks.

Non-hazardous purgewater is transported under standard Bill of Lading or Non-Hazardous Waste Manifest to a Blaine Tech Services, Inc. facility before being transported to a Chevron approved disposal facility

### **TRIP BLANKS**

Trip Blanks, if requested, are taken to the site and kept inside the sample cooler for the duration of the event. They are turned over to the laboratory for analysis with the samples from that site.

### **DUPLICATES**

Duplicates, if requested, may be collected at a site.

### **SAMPLE STORAGE**

All sample containers are promptly placed in food grade ice chests for storage in the field and transport (direct or via our facility) to the designated analytical laboratory. These ice chests contain quantities of restaurant grade ice as a refrigerant material. The samples are maintained in either an ice chest or a refrigerator until relinquished into the custody of the laboratory or laboratory courier.

### **DOCUMENTATION CONVENTIONS**

A label must be affixed to all sample containers. In most cases these labels are generated by our office personnel and are partially preprinted. Labels can also be hand written by our field personnel. The site is identified with the store number and site address, as is the particular groundwater well from which the sample is drawn (e.g. MW-1, MW-2, S-1 etc.). The time and date of sample collection along with the initials of the person who collects the sample are handwritten onto the label. Field documentation is contemporaneous.

### **DECONTAMINATION**

All equipment is brought to the site in clean and serviceable condition and is cleaned after use in each well and before subsequent use in any other well. Equipment such as hose reels, pumps and bailers is decontaminated before leaving the site.

The primary decontamination device is a commercial steam cleaner. The steam cleaner is de-tuned to function as a hot pressure washer that is then operated with high quality deionized water that is produced at our facility and stored onboard our sampling vehicle. Cleaning is facilitated by the use of proprietary fixtures and devices included in the patented workstation (U.S. Patent 5,535,775) that is incorporated in each sampling vehicle. Any sensitive equipment or parts (i.e. Dissolved Oxygen sensor membrane, water level

indicator, etc.) that cannot be washed using the high pressure water, will be sprayed with a non-phosphate soap and deionized water solution and rinsed with deionized water.

### **FERROUS IRON MEASUREMENTS**

All field measurements are collected at time of sampling with a HACH test kit.

## WELL GAUGING DATA

Project # 151229-J62 Date 12/24/15 Client Chevron

Site 7225 Bancroft Ave Oakland, CA

Well ID	Time	Well Size (in.)	Sheen / Odor	Depth to Immiscible Liquid (ft.)	Thickness of Immiscible Liquid (ft.)	Volume of Immiscibles Removed (ml)	Depth to water (ft.)	Depth to well bottom (ft.)	Survey Point: TOB or TOC	Notes
MW-1	1321	2	odor				18.76	33.71		
MW-2	1350	2					10.74	29.74		
MW-3	1345	2					18.92	32.45		
MW-4	1353	2					18.38	29.84		
MW-5										PARKED OVER
MW-6	1344	2					19.50	31.40		
MW-7	1331	3/4"					17.31	24.51		
MW-8	1342	2					17.01	29.87		
MW-9	1355	2					18.97	29.95		
MW-10	1357	2					17.62	29.37		

## CHEVRON WELL MONITORING DATA SHEET

Project #: 151229-262	Station #: 9-3322
Sampler: F6	Date: 12/29/15
Weather: Sunny	Ambient Air Temperature: 50°F
Well I.D.: MW-1	Well Diameter: (2) 3 4 6 8
Total Well Depth: 33.71	Depth to Water: 18.76
Depth to Free Product:	Thickness of Free Product (feet):
Referenced to: (PVC) Grade	D.O. Meter (if req'd): YSI HACH
DTW with 80% Recharge [(Height of Water Column x 0.20) + DTW]: 21.75	

Purge Method:

- Bailer
- Disposable Bailer
- Positive Air Displacement
- Electric Submersible
- Waterra
- Peristaltic
- Extraction Pump
- Other \_\_\_\_\_

Sampling Method:

- Bailer
- Disposable Bailer
- Extraction Port
- Dedicated Tubing

Other: \_\_\_\_\_

2.4	(Gals.) X	3	=	7.2	Gals.
1 Case Volume		Specified Volumes		Calculated Volume	

Well Diameter	Multiplier	Well Diameter	Multiplier
1"	0.04	4"	0.65
2"	0.16	6"	1.47
3"	0.37	Other	radius <sup>2</sup> * 0.163

Time	Temp (°F)	pH	Cond. (mS or µS)	Turbidity (NTUs)	Gals. Removed	Observations
1408	67.0	7.05	1083	383	25	odor
1415	66.5	6.77	1108	542	5	
1422	66.4	6.76	1101	525	7.5	

Did well dewater? Yes  No  Gallons actually evacuated: 7.5

Sampling Date: 12/29/15 Sampling Time: 1427 Depth to Water: 21.32

Sample I.D.: MW-1 Laboratory: Lancaster Other \_\_\_\_\_

Analyzed for: TPH-G BTEX MTBE OXYS Other: See COC

Duplicate I.D.: Analyzed for: TPH-G BTEX MTBE OXYS Other:

D.O. (if req'd):	Pre-purge:	mg/L	Post-purge:	mg/L
------------------	------------	------	-------------	------

O.R.P. (if req'd):	Pre-purge:	mV	Post-purge:	mV
--------------------	------------	----	-------------	----

## CHEVRON WELL MONITORING DATA SHEET

Project #: 151229-J6-2	Station #: 9-3322
Sampler: ET	Date: 12/19/15
Weather: Sunny	Ambient Air Temperature: 50°F
Well I.D.: MW-2	Well Diameter: (2) 3 4 6 8
Total Well Depth: 29.74	Depth to Water: 10.74
Depth to Free Product:	Thickness of Free Product (feet):
Referenced to: (PVC) Grade	D.O. Meter (if req'd): YSI HACH
DTW with 80% Recharge [(Height of Water Column x 0.20) + DTW]: 14.54	

Purge Method: 13

Sampling Method: Bailer

- Bailer  
 Disposable Bailer  
 Positive Air Displacement  
 Electric Submersible  
 Waterra  
 Peristaltic  
 Extraction Pump  
 Other \_\_\_\_\_

- Disposable Bailer  
 Extraction Port  
 Dedicated Tubing  
 Other: \_\_\_\_\_

3 (Gals.) X 3 Specified Volumes = 9 Gals. Calculated Volume  
 1 Case Volume

Well Diameter	Multiplier	Well Diameter	Multiplier
1"	0.04	4"	0.65
2"	0.16	6"	1.47
3"	0.37	Other	radius <sup>2</sup> * 0.163

Time	Temp (°F)	pH	Cond. (mS or μS)	Turbidity (NTUs)	Gals. Removed	Observations
1445	69.6	7.48	525	127	3	grey
1450	69.7	7.29	448	98	6	↓
1455	69.9	7.25	495	99	9	clear

Did well dewater? Yes  No  Gallons actually evacuated: 9

Sampling Date: 12/21/15 Sampling Time: 1509 Depth to Water: 13.71

Sample I.D.: MW-2 Laboratory: Lancaster Other \_\_\_\_\_

Analyzed for: TPH-G BTEX MTBE OXYS Other: See COC

Duplicate I.D.: Analyzed for: TPH-G BTEX MTBE OXYS Other:

D.O. (if req'd): Pre-purge: \_\_\_\_\_ mg/L Post-purge: \_\_\_\_\_ mg/L

O.R.P. (if req'd): Pre-purge: \_\_\_\_\_ mV Post-purge: \_\_\_\_\_ mV



## CHEVRON WELL MONITORING DATA SHEET

Project #: 151229-762	Station #: 9-3322
Sampler: #6	Date: 12/29/15
Weather: Sunny	Ambient Air Temperature: 50°F
Well I.D.: MW-4	Well Diameter: (2) 3 4 6 8
Total Well Depth: 29.84	Depth to Water: 18.38
Depth to Free Product: —	Thickness of Free Product (feet): —
Referenced to: (PVC) Grade	D.O. Meter (if req'd): YSI HACH
DTW with 80% Recharge [(Height of Water Column x 0.20) + DTW]: 20.67	

Purge Method:

- Bailer
- (Disposible) Bailer
- Positive Air Displacement
- Electric Submersible
- Waterra
- Peristaltic
- Extraction Pump
- Other \_\_\_\_\_

Sampling Method:

- Bailer
- (Disposible) Bailer
- Extraction Port
- Dedicated Tubing

Other: \_\_\_\_\_

1.8 (Gals.) X 3 = 5.4 Gals.  
 1 Case Volume      Specified Volumes      Calculated Volume

Well Diameter	Multiplier	Well Diameter	Multiplier
1"	0.04	4"	0.65
2"	(0.16)	6"	1.47
3"	0.37	Other	radius <sup>2</sup> * 0.163

Time	Temp (°F)	pH	Cond. (mS or μS)	Turbidity (NTUs)	Gals. Removed	Observations
1450	65.9	7.38	471	360	2	
1455	67.3	7.16	459	572	4	
1500	67.5	7.11	456	517	5.5	

Did well dewater?    Yes    (No)    Gallons actually evacuated: 5.5

Sampling Date: 12/29/15    Sampling Time: 1507    Depth to Water: 19.06

Sample I.D.: MW-4    Laboratory: Lancaster    Other \_\_\_\_\_

Analyzed for: TPH-G    BTEX    MTBE    OXYS    Other: See COL

Duplicate I.D.:    Analyzed for: TPH-G    BTEX    MTBE    OXYS    Other:

D.O. (if req'd):    Pre-purge:    mg/L    Post-purge:    mg/L

O.R.P. (if req'd):    Pre-purge:    mV    Post-purge:    mV

## CHEVRON WELL MONITORING DATA SHEET

Project #: 151229 - 762	Station #: 9-3322
Sampler: 76	Date: 12/29/15
Weather: Sunny	Ambient Air Temperature: —
Well I.D.: MW-5	Well Diameter: (2) 3 4 6 8 _____
Total Well Depth: —	Depth to Water: —
Depth to Free Product:	Thickness of Free Product (feet):
Referenced to: PVC Grade	D.O. Meter (if req'd): YSI HACH
DTW with 80% Recharge [(Height of Water Column x 0.20) + DTW]:	

Purge Method:

- Bailer
- Disposable Bailer
- Positive Air Displacement
- Electric Submersible
- Waterra
- Peristaltic
- Extraction Pump
- Other \_\_\_\_\_

Sampling Method:

- Bailer
- Disposable Bailer
- Extraction Port
- Dedicated Tubing

Other: \_\_\_\_\_

	(Gals.) X _____ = _____ Gals.	
I Case Volume	Specified Volumes	Calculated Volume

Well Diameter	Multiplier	Well Diameter	Multiplier
1"	0.04	4"	0.65
2"	0.16	6"	1.47
3"	0.37	Other	radius <sup>2</sup> * 0.163

Time	Temp (°F)	pH	Cond. (mS or µS)	Turbidity (NTUs)	Gals. Removed	Observations
						Car parked over for whole duration of event

Did well dewater? Yes No Gallons actually evacuated:

Sampling Date: Sampling Time: Depth to Water:

Sample I.D.: Laboratory: Lancaster Other \_\_\_\_\_

Analyzed for: TPH-G BTEX MTBE OXYS Other:

Duplicate I.D.: Analyzed for: TPH-G BTEX MTBE OXYS Other:

D.O. (if req'd): Pre-purge: \_\_\_\_\_ mg/L Post-purge: \_\_\_\_\_ mg/L

O.R.P. (if req'd): Pre-purge: \_\_\_\_\_ mV Post-purge: \_\_\_\_\_ mV

## CHEVRON WELL MONITORING DATA SHEET

Project #: 15221-J62	Station #: 9-3322
Sampler: FET	Date: 12/29/15
Weather: Sunny	Ambient Air Temperature: 50°F
Well I.D.: MW-6	Well Diameter: (2) 3 4 6 8
Total Well Depth: 31.40	Depth to Water: 19.50
Depth to Free Product:	Thickness of Free Product (feet):
Referenced to: PVC Grade	D.O. Meter (if req'd): YSI HACH
DTW with 80% Recharge [(Height of Water Column x 0.20) + DTW]: 21.88	

Purge Method: 114      Sampling Method: Bailer

<input type="checkbox"/> Bailer <input checked="" type="checkbox"/> Disposable Bailer <input type="checkbox"/> Positive Air Displacement <input type="checkbox"/> Electric Submersible	<input type="checkbox"/> Waterra <input type="checkbox"/> Peristaltic <input type="checkbox"/> Extraction Pump <input type="checkbox"/> Other _____
---	--

Other: \_\_\_\_\_

2 (Gals.) X	4	= 6 Gals.
1 Case Volume	Specified Volumes	Calculated Volume

Well Diameter	Multiplier	Well Diameter	Multiplier
1"	0.04	4"	0.65
2"	0.16	6"	1.47
3"	0.37	Other	radius <sup>2</sup> * 0.163

Time	Temp (°F)	pH	Cond. (mS or μS)	Turbidity (NTUs)	Gals. Removed	Observations
1525	65.8	6.90	969	75	2	Clear
1530	65.5	6.87	981	62	4	
1535	65.1	6.86	972	60	6	

Did well dewater?    Yes     No    Gallons actually evacuated: 6

Sampling Date: 1/4/16    Sampling Time: 1545    Depth to Water: 21.23

Sample I.D.: MW-6    Laboratory: Lancaster    Other: \_\_\_\_\_

Analyzed for: TPH-G    BTEX    MTBE    OXYS    Other: See COC

Duplicate I.D.: \_\_\_\_\_    Analyzed for: TPH-G    BTEX    MTBE    OXYS    Other: \_\_\_\_\_

D.O. (if req'd):	Pre-purge:	mg/L	Post-purge:	mg/L
------------------	------------	------	-------------	------

O.R.P. (if req'd):	Pre-purge:	mV	Post-purge:	mV
--------------------	------------	----	-------------	----

## CHEVRON WELL MONITORING DATA SHEET

Project #: <u>15D29-762</u>	Station #: <u>9-3322</u>
Sampler: <u>46</u>	Date: <u>12/29/15</u>
Weather: <u>Sunny</u>	Ambient Air Temperature: <u>50°F</u>
Well I.D.: <u>MW-7</u>	Well Diameter: 2 3 4 6 8 <u>3/4"</u>
Total Well Depth: <u>24.51</u>	Depth to Water: <u>17.31</u>
Depth to Free Product: <u>—</u>	Thickness of Free Product (feet): <u>—</u>
Referenced to: <u>PVC</u> Grade	D.O. Meter (if req'd): YSI HACH
DTW with 80% Recharge [(Height of Water Column x 0.20) + DTW]: <u>18.75</u>	

Purge Method: Bailer      Sampling Method: Bailer

Bailer      Waterra      Disposable Bailer

Disposable Bailer      Peristaltic      Extraction Port

Positive Air Displacement      Extraction Pump      Dedicated Tubing

Electric Submersible      Other: hand check      Other: Tubing

0.14 (Gals.) X 3 = 0.42 Gals.

1 Case Volume      Specified Volumes      Calculated Volume

Well Diameter	Multiplier	Well Diameter	Multiplier
1"	0.04	4"	0.65
2"	0.16	6"	1.47
3"	0.37	Other	radius <sup>2</sup> * 0.163

Time	Temp (°F)	pH	Cond. (mS or µS)	Turbidity (NTUs)	Gals. Removed	Observations
1524	63.8	6.95	1387	135	0.2	
1526	67.1	6.88	1402	310	0.4	
1529	67.2	6.89	1405	307	0.5	

Did well dewater?      Yes       No      Gallons actually evacuated: 0.5

Sampling Date: 12/29/15      Sampling Time: 1538      Depth to Water: 17.95

Sample I.D.: MW-7      Laboratory: Lancaster      Other: —

Analyzed for: TPH-G      BTEX      MTBE      OXYS      Other: See LOC

Duplicate I.D.:      Analyzed for: TPH-G      BTEX      MTBE      OXYS      Other: —

D.O. (if req'd):      Pre-purge:   mg/L      Post-purge:   mg/L

O.R.P. (if req'd):      Pre-purge:   mV      Post-purge:   mV

## CHEVRON WELL MONITORING DATA SHEET

Project #: 15700-JB-2	Station #: 9-3322
Sampler: ET	Date: 12/18/15
Weather: Sunny	Ambient Air Temperature: 50°F
Well I.D.: MW-8	Well Diameter: (2) 3 4 6 8
Total Well Depth: 29.87	Depth to Water: 17.01
Depth to Free Product:	Thickness of Free Product (feet):
Referenced to: PVC Grade	D.O. Meter (if req'd): YSI HACH
DTW with 80% Recharge [(Height of Water Column x 0.20) + DTW]: 19.58	

Purge Method: NI Sampling Method: Bailer

Bailer  
 Disposable Bailer  
 Positive Air Displacement  
 Electric Submersible

Waterra  
 Peristaltic  
 Extraction Pump  
 Other \_\_\_\_\_

Disposable Bailer  
 Extraction Port  
 Dedicated Tubing  
 Other: \_\_\_\_\_

$2.1 \text{ (Gals.)} \times 3 = 6.2 \text{ Gals.}$   
 I Case Volume      Specified Volumes      Calculated Volume

Well Diameter	Multiplier	Well Diameter	Multiplier
1"	0.04	4"	0.65
2"	0.16	6"	1.47
3"	0.37	Other	radius <sup>2</sup> * 0.163

Time	Temp (°F)	pH	Cond. (mS or µS)	Turbidity (NTUs)	Gals. Removed	Observations
1405	67.3	8.05	675	117	2.1	grit
1410	66.2	7.62	624	136	4.2	↓
1415	66.9	7.58	632	125	6.2	↓

Did well dewater? Yes  No  Gallons actually evacuated: 65

Sampling Date: 12/18/15 Sampling Time: 1420 Depth to Water: 1770

Sample I.D.: MW-8 Laboratory: Lancaster Other \_\_\_\_\_

Analyzed for: TPH-G BTEX MTBE OXYS Other: See COC

Duplicate I.D.: Analyzed for: TPH-G BTEX MTBE OXYS Other:

D.O. (if req'd): Pre-purge: \_\_\_\_\_ mg/L Post-purge: \_\_\_\_\_ mg/L

O.R.P. (if req'd): Pre-purge: \_\_\_\_\_ mV Post-purge: \_\_\_\_\_ mV

Chevron Site Number: 93322  
 Chevron Site Global ID: T0600102079  
 Chevron Site Address: 7225 Bancroft Ave., Oakland, CA  
 Chevron PM: Dave Patten  
 Chevron PM Phone No.: (925) 790-3964  
 Retail and Terminal Business Unit (RTBU) Job  
 Construction/Retail Job

Chevron Consultant: GHD  
 Address: 2300 Clayton Rd., Site 920, Concord, CA  
 Consultant Contact: Nathan Lee  
 Consultant Phone No. 925-849-1003  
 Consultant Project No. 151229-J62  
 Sampling Company: Blaine Tech Services  
 Sampled By (Print): Joe Gabel  
 Sampler Signature: [Signature]

ANALYSES REQUIRED

- EPA 8260B/GC/MS
- TPH/GC
- BTEX
- MIBEX
- OXYGENATES
- HVOC
- EPA 8015B
- GRO
- DRO
- ORO
- HC SCREEN
- EPA 8021B
- BTEX
- MTBE
- EPA 6010
- Ca, Fe, K, Mg, Mn, Na
- EPA6010/7000
- TITLE 22 METALS
- TLIC
- STLC
- EPA150.1
- PH
- SM2510B
- SPECIFIC CONDUCTIVITY
- EPA 418.1
- TRPH
- EPA 8260
- ETHANOL
- EPA 8015
- TPH-D
- EPA 413.1
- OIL & GREASE

Preservation Codes  
 H = HCL T= Thiosulfate  
 N = HNO<sub>3</sub> B = NaOH  
 S = H<sub>2</sub>SO<sub>4</sub> O = Other

Special Instructions  
 Must meet lowest detection limits possible for 8260 compounds.

Charge Code: NWRTB-0098247-0-OML  
NWRTB 00SITE NUMBER-0- WBS  
**(WBS ELEMENTS:**  
 SITE ASSESSMENT: A1L REMEDIATION IMPLEMENTATION: R5L  
 SITE MONITORING: OML OPERATION MAINTENANCE & MONITORING: M1L  
**THIS IS A LEGAL DOCUMENT. ALL FIELDS MUST BE FILLED OUT CORRECTLY AND COMPLETELY.**

**Lancaster Laboratories**  
 Lancaster, PA  
 Lab Contact: Amek Carter  
 2425 New Holland Pike,  
 Lancaster, PA 17601  
 Phone No:  
 (717)656-2300

Other Lab	Temp.	Blank	Check
		Time	Temp.
		1400	2°C
		1500	2°C
		1600	2°C

SAMPLE ID				Sample Time	# of Containers	Container Type	ANALYSES REQUIRED										Notes/Comments																						
Field Point Name	Matrix	Top Depth	Date (yymmdd)				EPA 8260B/GC/MS	TPH/GC	BTEX	MIBEX	OXYGENATES	HVOC	EPA 8015B	GRO	DRO	ORO		HC SCREEN	EPA 8021B	BTEX	MTBE	EPA 6010	Ca, Fe, K, Mg, Mn, Na	EPA6010/7000	TITLE 22 METALS	TLIC	STLC	EPA150.1	PH	SM2510B	SPECIFIC CONDUCTIVITY	EPA 418.1	TRPH	EPA 8260	ETHANOL	EPA 8015	TPH-D	EPA 413.1	OIL & GREASE
QA	T		151229	1400	2	VOA	X																																
MW-1	W			1427	6	VOA	X																																
MW-2	W			1500	6	VOA	X																																
MW-4	W			1507	6	VOA	X																																
MW-6	W			1545	6	VOA	X																																
MW-7	W			1538	6	VOA	X																																
MW-8	W			1420	6	VOA	X																																

Relinquished By: <u>[Signature]</u>	Company: <u>BTS</u>	Date/Time: <u>12/29/15 1700</u>	Relinquished To: <u>[Signature]</u>	Company: <u>BTS</u>	Date/Time: <u>12/29/15 1700</u>	Turnaround Time: Standard <input checked="" type="checkbox"/> 24 Hours <input type="checkbox"/> 48 hours <input type="checkbox"/> 72 Hours <input type="checkbox"/> Other <input type="checkbox"/>
Relinquished By:	Company:	Date/Time:	Relinquished To:	Company:	Date/Time:	Sample Integrity: (Check by lab on arrival)
Relinquished By:	Company:	Date/Time:	Relinquished To:	Company:	Date/Time:	Intact: _____ On Ice: _____ Temp: _____ COC # _____

# WELLHEAD INSPECTION CHECKLIST

Page 1 of 1

Client Chevron Date 12/29/15

Site Address 7225 Bancroft Ave., Oakland

Job Number 151229-762 Technician FE

Well ID	Well Inspected - No Corrective Action Required	WELL IS SECURABLE BY DESIGN (12" or less)	WELL IS CLEARLY MARKED WITH THE WORDS "MONITORING WELL" (12" or less)	Water Bailed From Wellbox	Wellbox Components Cleaned	Cap Replaced	Lock Replaced	Other Action Taken (explain below)	Well Not Inspected (explain below)	Repair Order Submitted
MW-1			X	X				X		
MW-2			X					X		
MW-3			X					X		
MW-4			X					X		
MW-5			X							
MW-6			X					X		
MW-7	X	X	X							
MW-8	X	X	X							
MW-9			X							
MW-10			X					X		
								X		

NOTES: MW-4 = 1/3 bolts missing; MW-10 2/2 tabs stripped; MW-10 2/2 bolts missing  
MW-3 = 3/3 tabbed missing; MW-1 2/3 bolts missing; MW-2 1/2 bolts missing  
2/2 tabs stripped; MW-9 1/2 bolts missing

SOURCE RECORD **BILL OF LADING**

FOR PURGEWATER RECOVERED FROM GROUNDWATER WELLS AT CHEVRON FACILITIES IN THE STATE OF CALIFORNIA. THE PURGE-WATER WHICH HAS BEEN RECOVERED FROM GROUNDWATER WELLS IS COLLECTED BY THE CONTRACTOR AND HAULED TO THEIR FACILITY IN SAN JOSE, CALIFORNIA FOR TEMPORARILY HOLDING PENDING TRANSPORT BY OTHERS TO FINAL DESTINATION.

The contractor performing this work is BLAINE TECH SERVICES, INC. (BLAINE TECH), 1680 Rogers Ave. San Jose CA (408) 573-0555). BLAINE TECH. is authorized by Chevron Environmental Management Company (CHEVRON EMC) to recover, collect, apportion into loads, and haul the purgewater that is drawn from wells at the CHEVRON EMC facility indicated below and to deliver that purgewater to BLAINE TECH for temporarily holding. Transport routing of the purgewater may be direct from one CHEVRON EMC facility to BLAINE TECH; from one CHEVRON EMC facility to BLAINE TECH via another CHEVRON EMC facility; or any combination thereof. The well purgewater is and remains the property of CHEVRON EMC.

This **Source Record BILL OF LADING** was initiated to cover the recovery of Non-Hazardous Well Purgewater from wells at the Chevron facility described below:

9-3322 CHEVRON # Nathan Lee Chevron Engineer  
7225 Bancroft Ave street name Oakland city CA state  
 street number

WELL I.D.	GALS.	WELL I.D.	GALS.
MW-1	7.5	/	/
MW-2	9	/	/
MW-4	5.5	/	/
MW-6	6	/	/
MW-7	6.5	/	/
MW-8	6.5	/	/
/	/	/	/
/	/	/	/

added equip. \_\_\_\_\_ any other adjustments / \_\_\_\_\_  
 rinse water 1 0.5 gal

TOTAL GALS. RECOVERED 35.5 gal loaded onto BTS vehicle # \_\_\_\_\_

BTS event # 151229-762 time 1600 date 12/29/15

Transporter signature [Signature]

\*\*\*\*\*

REC'D AT \_\_\_\_\_ time \_\_\_\_\_ date 1/1

Unloaded/received by signature \_\_\_\_\_





# **Attachment B**

## **Laboratory Analytical Report**

## ANALYTICAL RESULTS

Prepared by:

Eurofins Lancaster Laboratories Environmental  
2425 New Holland Pike  
Lancaster, PA 17601

Prepared for:

Chevron  
6001 Bollinger Canyon Rd L4310  
San Ramon CA 94583

January 12, 2016

**Project: 93322**

Submittal Date: 12/31/2015  
Group Number: 1620805  
PO Number: 0015166637  
Release Number: HORNE  
State of Sample Origin: CA

<u>Client Sample Description</u>	<u>Lancaster Labs (LL) #</u>
QA-T-151229 NA Water	8193485
MW-1-W-151229 NA Water	8193486
MW-2-W-151229 NA Water	8193487
MW-4-W-151229 NA Water	8193488
MW-6-W-151229 NA Water	8193489
MW-7-W-151229 NA Water	8193490
MW-8-W-151229 NA Water	8193491

The specific methodologies used in obtaining the enclosed analytical results are indicated on the Laboratory Sample Analysis Record.

Regulatory agencies do not accredit laboratories for all methods, analytes, and matrices. Our scopes of accreditation can be viewed at <http://www.eurofinsus.com/environment-testing/laboratories/eurofins-lancaster-laboratories-environmental/resources/certifications/>.

ELECTRONIC COPY TO	CRA	Attn: Nathan Lee
ELECTRONIC COPY TO	Chevron	Attn: Anna Avina
ELECTRONIC COPY TO	Blaine Tech Services, Inc.	Attn: Dustin Becker
ELECTRONIC COPY TO	Chevron	Attn: Report Contact

Respectfully Submitted,



Amek Carter  
Specialist

(717) 556-7252

Sample Description: QA-T-151229 NA Water  
Facility# 93322 BTST  
7225 Bancroft Ave-Oakland T0600102079

LL Sample # WW 8193485  
LL Group # 1620805  
Account # 10991

Project Name: 93322

Collected: 12/29/2015 14:00

Chevron

Submitted: 12/31/2015 11:50

6001 Bollinger Canyon Rd L4310

Reported: 01/12/2016 19:23

San Ramon CA 94583

BAOQA

CAT No.	Analysis Name	CAS Number	Result	Method Detection Limit*	Limit of Quantitation	Dilution Factor
<b>GC/MS</b>	<b>Volatiles</b>	<b>SW-846 8260B</b>	<b>ug/l</b>	<b>ug/l</b>	<b>ug/l</b>	
10945	Benzene	71-43-2	N.D.	0.5	1	1
10945	C6-C12-TPH-GRO	n.a.	N.D.	22	50	1
10945	Ethylbenzene	100-41-4	N.D.	0.5	1	1
10945	Toluene	108-88-3	N.D.	0.5	1	1
10945	Xylene (Total)	1330-20-7	N.D.	0.5	1	1

### General Sample Comments

CA ELAP Lab Certification No. 2792

All QC is compliant unless otherwise noted. Please refer to the Quality Control Summary for overall QC performance data and associated samples.

### Laboratory Sample Analysis Record

CAT No.	Analysis Name	Method	Trial#	Batch#	Analysis Date and Time	Analyst	Dilution Factor
10945	8260 BTEX+ GRO C6-C12	SW-846 8260B	1	F160081AA	01/08/2016 09:05	Anita M Dale	1
01163	GC/MS VOA Water Prep	SW-846 5030B	1	F160081AA	01/08/2016 09:05	Anita M Dale	1

\*=This limit was used in the evaluation of the final result

Sample Description: MW-1-W-151229 NA Water  
Facility# 93322 BTST  
7225 Bancroft Ave-Oakland T0600102079

LL Sample # WW 8193486  
LL Group # 1620805  
Account # 10991

Project Name: 93322

Collected: 12/29/2015 14:27 by JG

Chevron  
6001 Bollinger Canyon Rd L4310  
San Ramon CA 94583

Submitted: 12/31/2015 11:50

Reported: 01/12/2016 19:23

BAO01

CAT No.	Analysis Name	CAS Number	Result	Method Detection Limit*	Limit of Quantitation	Dilution Factor
<b>GC/MS</b>	<b>Volatiles</b>	<b>SW-846 8260B</b>	<b>ug/l</b>	<b>ug/l</b>	<b>ug/l</b>	
10945	Benzene	71-43-2	7,800	25	50	50
10945	C6-C12-TPH-GRO	n.a.	84,000	1,100	2,500	50
10945	Ethanol	64-17-5	N.D.	2,500	13,000	50
10945	Ethylbenzene	100-41-4	2,200	25	50	50
10945	Toluene	108-88-3	5,200	25	50	50
10945	Xylene (Total)	1330-20-7	10,000	25	50	50

### General Sample Comments

CA ELAP Lab Certification No. 2792

All QC is compliant unless otherwise noted. Please refer to the Quality Control Summary for overall QC performance data and associated samples.

### Laboratory Sample Analysis Record

CAT No.	Analysis Name	Method	Trial#	Batch#	Analysis Date and Time	Analyst	Dilution Factor
10945	UST VOCs + GRO by 8260B-Water	SW-846 8260B	1	F160081AA	01/08/2016 10:55	Anita M Dale	50
01163	GC/MS VOA Water Prep	SW-846 5030B	1	F160081AA	01/08/2016 10:55	Anita M Dale	50

\*=This limit was used in the evaluation of the final result

Sample Description: MW-2-W-151229 NA Water  
Facility# 93322 BTST  
7225 Bancroft Ave-Oakland T0600102079

LL Sample # WW 8193487  
LL Group # 1620805  
Account # 10991

Project Name: 93322

Collected: 12/29/2015 15:00 by JG

Chevron

6001 Bollinger Canyon Rd L4310  
San Ramon CA 94583

Submitted: 12/31/2015 11:50

Reported: 01/12/2016 19:23

BAO02

CAT No.	Analysis Name	CAS Number	Result	Method Detection Limit*	Limit of Quantitation	Dilution Factor
<b>GC/MS</b>	<b>Volatiles</b>	<b>SW-846 8260B</b>	<b>ug/l</b>	<b>ug/l</b>	<b>ug/l</b>	
10945	Benzene	71-43-2	0.6 J	0.5	1	1
10945	C6-C12-TPH-GRO	n.a.	5,200	220	500	10
10945	Ethanol	64-17-5	N.D.	50	250	1
10945	Ethylbenzene	100-41-4	15	0.5	1	1
10945	Toluene	108-88-3	N.D.	0.5	1	1
10945	Xylene (Total)	1330-20-7	3	0.5	1	1

### General Sample Comments

CA ELAP Lab Certification No. 2792

All QC is compliant unless otherwise noted. Please refer to the Quality Control Summary for overall QC performance data and associated samples.

### Laboratory Sample Analysis Record

CAT No.	Analysis Name	Method	Trial#	Batch#	Analysis Date and Time	Analyst	Dilution Factor
10945	UST VOCs + GRO by 8260B-Water	SW-846 8260B	1	F160081AA	01/08/2016 11:17	Anita M Dale	1
10945	UST VOCs + GRO by 8260B-Water	SW-846 8260B	1	F160102AA	01/11/2016 03:49	Hu Yang	10
01163	GC/MS VOA Water Prep	SW-846 5030B	1	F160081AA	01/08/2016 11:17	Anita M Dale	1
01163	GC/MS VOA Water Prep	SW-846 5030B	2	F160102AA	01/11/2016 03:49	Hu Yang	10

\*=This limit was used in the evaluation of the final result

Sample Description: MW-4-W-151229 NA Water  
Facility# 93322 BTST  
7225 Bancroft Ave-Oakland T0600102079

LL Sample # WW 8193488  
LL Group # 1620805  
Account # 10991

Project Name: 93322

Collected: 12/29/2015 15:07 by JG

Chevron

6001 Bollinger Canyon Rd L4310  
San Ramon CA 94583

Submitted: 12/31/2015 11:50

Reported: 01/12/2016 19:23

BAO04

CAT No.	Analysis Name	CAS Number	Result	Method Detection Limit*	Limit of Quantitation	Dilution Factor
<b>GC/MS</b>	<b>Volatiles</b>	<b>SW-846 8260B</b>	<b>ug/l</b>	<b>ug/l</b>	<b>ug/l</b>	
10945	Benzene	71-43-2	N.D.	0.5	1	1
10945	C6-C12-TPH-GRO	n.a.	150	22	50	1
10945	Ethanol	64-17-5	N.D.	50	250	1
10945	Ethylbenzene	100-41-4	0.6 J	0.5	1	1
10945	Toluene	108-88-3	N.D.	0.5	1	1
10945	Xylene (Total)	1330-20-7	3	0.5	1	1

### General Sample Comments

CA ELAP Lab Certification No. 2792

All QC is compliant unless otherwise noted. Please refer to the Quality Control Summary for overall QC performance data and associated samples.

### Laboratory Sample Analysis Record

CAT No.	Analysis Name	Method	Trial#	Batch#	Analysis Date and Time	Analyst	Dilution Factor
10945	UST VOCs + GRO by 8260B-Water	SW-846 8260B	1	F160081AA	01/08/2016 11:38	Anita M Dale	1
01163	GC/MS VOA Water Prep	SW-846 5030B	1	F160081AA	01/08/2016 11:38	Anita M Dale	1

\*=This limit was used in the evaluation of the final result



Sample Description: MW-6-W-151229 NA Water  
Facility# 93322 BTST  
7225 Bancroft Ave-Oakland T0600102079

LL Sample # WW 8193489  
LL Group # 1620805  
Account # 10991

Project Name: 93322

Collected: 12/29/2015 15:45 by JG

Chevron  
6001 Bollinger Canyon Rd L4310  
San Ramon CA 94583

Submitted: 12/31/2015 11:50

Reported: 01/12/2016 19:23

BAO06

CAT No.	Analysis Name	CAS Number	Result	Method Detection Limit*	Limit of Quantitation	Dilution Factor
<b>GC/MS</b>	<b>Volatiles</b>	<b>SW-846 8260B</b>	<b>ug/l</b>	<b>ug/l</b>	<b>ug/l</b>	
10945	Benzene	71-43-2	230	5	10	10
10945	C6-C12-TPH-GRO	n.a.	1,200	220	500	10
10945	Ethanol	64-17-5	N.D.	500	2,500	10
10945	Ethylbenzene	100-41-4	N.D.	5	10	10
10945	Toluene	108-88-3	N.D.	5	10	10
10945	Xylene (Total)	1330-20-7	N.D.	5	10	10

### General Sample Comments

CA ELAP Lab Certification No. 2792

All QC is compliant unless otherwise noted. Please refer to the Quality Control Summary for overall QC performance data and associated samples.

### Laboratory Sample Analysis Record

CAT No.	Analysis Name	Method	Trial#	Batch#	Analysis Date and Time	Analyst	Dilution Factor
10945	UST VOCs + GRO by 8260B-Water	SW-846 8260B	1	F160081AA	01/08/2016 12:00	Anita M Dale	10
01163	GC/MS VOA Water Prep	SW-846 5030B	1	F160081AA	01/08/2016 12:00	Anita M Dale	10

\*=This limit was used in the evaluation of the final result

Sample Description: MW-7-W-151229 NA Water  
Facility# 93322 BTST  
7225 Bancroft Ave-Oakland T0600102079

LL Sample # WW 8193490  
LL Group # 1620805  
Account # 10991

Project Name: 93322

Collected: 12/29/2015 15:38 by JG

Chevron

6001 Bollinger Canyon Rd L4310  
San Ramon CA 94583

Submitted: 12/31/2015 11:50

Reported: 01/12/2016 19:23

BAO07

CAT No.	Analysis Name	CAS Number	Result	Method Detection Limit*	Limit of Quantitation	Dilution Factor
<b>GC/MS</b>	<b>Volatiles</b>	<b>SW-846 8260B</b>	<b>ug/l</b>	<b>ug/l</b>	<b>ug/l</b>	
10945	t-Amyl methyl ether	994-05-8	N.D.	5	10	10
10945	Benzene	71-43-2	1,100	5	10	10
10945	t-Butyl alcohol	75-65-0	200	20	50	10
10945	C6-C12-TPH-GRO	n.a.	3,700	220	500	10
10945	Ethanol	64-17-5	N.D.	500	2,500	10
10945	Ethyl t-butyl ether	637-92-3	N.D.	5	10	10
10945	Ethylbenzene	100-41-4	23	5	10	10
10945	di-Isopropyl ether	108-20-3	N.D.	5	10	10
10945	Methyl Tertiary Butyl Ether	1634-04-4	37	5	10	10
10945	Toluene	108-88-3	19	5	10	10
10945	Xylene (Total)	1330-20-7	210	5	10	10

### General Sample Comments

CA ELAP Lab Certification No. 2792

All QC is compliant unless otherwise noted. Please refer to the Quality Control Summary for overall QC performance data and associated samples.

### Laboratory Sample Analysis Record

CAT No.	Analysis Name	Method	Trial#	Batch#	Analysis Date and Time	Analyst	Dilution Factor
10945	UST VOCs + GRO by 8260B-Water	SW-846 8260B	1	F160081AA	01/08/2016 10:33	Anita M Dale	10
01163	GC/MS VOA Water Prep	SW-846 5030B	1	F160081AA	01/08/2016 10:33	Anita M Dale	10

\*=This limit was used in the evaluation of the final result

Sample Description: MW-8-W-151229 NA Water  
Facility# 93322 BTST  
7225 Bancroft Ave-Oakland T0600102079

LL Sample # WW 8193491  
LL Group # 1620805  
Account # 10991

Project Name: 93322

Collected: 12/29/2015 14:20 by JG

Chevron

6001 Bollinger Canyon Rd L4310  
San Ramon CA 94583

Submitted: 12/31/2015 11:50

Reported: 01/12/2016 19:23

BAO08

CAT No.	Analysis Name	CAS Number	Result	Method Detection Limit*	Limit of Quantitation	Dilution Factor
<b>GC/MS</b>	<b>Volatiles</b>	<b>SW-846 8260B</b>	<b>ug/l</b>	<b>ug/l</b>	<b>ug/l</b>	
10945	t-Amyl methyl ether	994-05-8	N.D.	0.5	1	1
10945	Benzene	71-43-2	0.9 J	0.5	1	1
10945	t-Butyl alcohol	75-65-0	N.D.	2	5	1
10945	C6-C12-TPH-GRO	n.a.	450	22	50	1
10945	Ethanol	64-17-5	N.D.	50	250	1
10945	Ethyl t-butyl ether	637-92-3	N.D.	0.5	1	1
10945	Ethylbenzene	100-41-4	N.D.	0.5	1	1
10945	di-Isopropyl ether	108-20-3	N.D.	0.5	1	1
10945	Methyl Tertiary Butyl Ether	1634-04-4	N.D.	0.5	1	1
10945	Toluene	108-88-3	N.D.	0.5	1	1
10945	Xylene (Total)	1330-20-7	N.D.	0.5	1	1

### General Sample Comments

CA ELAP Lab Certification No. 2792

All QC is compliant unless otherwise noted. Please refer to the Quality Control Summary for overall QC performance data and associated samples.

### Laboratory Sample Analysis Record

CAT No.	Analysis Name	Method	Trial#	Batch#	Analysis Date and Time	Analyst	Dilution Factor
10945	UST VOCs + GRO by 8260B-Water	SW-846 8260B	1	F160081AA	01/08/2016 09:27	Anita M Dale	1
01163	GC/MS VOA Water Prep	SW-846 5030B	1	F160081AA	01/08/2016 09:27	Anita M Dale	1

\*=This limit was used in the evaluation of the final result

## Quality Control Summary

Client Name: Chevron  
Reported: 01/12/2016 19:23

Group Number: 1620805

Matrix QC may not be reported if insufficient sample or site-specific QC samples were not submitted. In these situations, to demonstrate precision and accuracy at a batch level, a LCS/LCSD was performed, unless otherwise specified in the method.

All Inorganic Initial Calibration and Continuing Calibration Blanks met acceptable method criteria unless otherwise noted on the Analysis Report.

### Method Blank

Analysis Name	Result	MDL**	LOQ
	ug/l	ug/l	ug/l
Batch number: F160081AA	Sample number(s): 8193485-8193491		
t-Amyl methyl ether	N.D.	0.5	1
Benzene	N.D.	0.5	1
t-Butyl alcohol	N.D.	2	5
C6-C12-TPH-GRO	N.D.	22	50
Ethanol	N.D.	50	250
Ethyl t-butyl ether	N.D.	0.5	1
Ethylbenzene	N.D.	0.5	1
di-Isopropyl ether	N.D.	0.5	1
Methyl Tertiary Butyl Ether	N.D.	0.5	1
Toluene	N.D.	0.5	1
Xylene (Total)	N.D.	0.5	1
Batch number: F160102AA	Sample number(s): 8193487		
C6-C12-TPH-GRO	N.D.	22	50

### LCS/LCSD

Analysis Name	LCS Spike Added	LCS Conc	LCSD Spike Added	LCSD Conc	LCS %REC	LCSD %REC	LCS/LCSD Limits	RPD	RPD Max
	ug/l	ug/l	ug/l	ug/l					
Batch number: F160081AA	Sample number(s): 8193485-8193491								
t-Amyl methyl ether	20	17.86			89		75-120		
Benzene	20	18.46			92		78-120		
t-Butyl alcohol	200	185.28			93		78-121		
C6-C12-TPH-GRO	1000	942.52	1000	889	94	89	52-154	6	30
Ethanol	500	449.47			90		49-144		
Ethyl t-butyl ether	20	17.44			87		69-120		
Ethylbenzene	20	18.24			91		78-120		
di-Isopropyl ether	20	17.58			88		70-124		
Methyl Tertiary Butyl Ether	20	18.2			91		75-120		
Toluene	20	19.15			96		80-120		
Xylene (Total)	60	55.79			93		80-120		
Batch number: F160102AA	Sample number(s): 8193487								
C6-C12-TPH-GRO	1000	966.46	1000	954.79	97	95	52-154	1	30

### MS/MSD

Unspiked (UNSPK) = the sample used in conjunction with the matrix spike

\*- Outside of specification

\*\* - This limit was used in the evaluation of the final result for the blank

(1) The result for one or both determinations was less than five times the LOQ.

(2) The unspiked result was more than four times the spike added.

P##### is indicative of a Background or Unspiked sample that is batch matrix QC and was not performed using a sample from this submission group.

## Quality Control Summary

Client Name: Chevron  
Reported: 01/12/2016 19:23

Group Number: 1620805

Analysis Name	Unspiked Conc ug/l	MS Spike Added ug/l	MS Conc ug/l	MSD Spike Added ug/l	MSD Conc ug/l	MS %Rec	MSD %Rec	MS/MSD Limits	RPD	RPD Max
Batch number: F160081AA	Sample number(s): 8193485-8193491 UNSPK: 8193491									
t-Amyl methyl ether	N.D.	20	19.19	20	18.28	96	91	75-120	5	30
Benzene	0.909	20	20.54	20	20.1	98	96	78-120	2	30
t-Butyl alcohol	N.D.	200	185.28	200	174.38	93	87	78-121	6	30
Ethanol	N.D.	500	480.31	500	478.86	96	96	49-144	0	30
Ethyl t-butyl ether	N.D.	20	17.46	20	17.65	87	88	69-120	1	30
Ethylbenzene	N.D.	20	19.78	20	19.67	99	98	78-120	1	30
di-Isopropyl ether	N.D.	20	17.98	20	17.4	90	87	70-124	3	30
Methyl Tertiary Butyl Ether	N.D.	20	18.34	20	18.04	92	90	75-120	2	30
Toluene	N.D.	20	19.61	20	19.1	98	96	80-120	3	30
Xylene (Total)	N.D.	60	59.3	60	58.86	99	98	80-120	1	30

## Surrogate Quality Control

Surrogate recoveries which are outside of the QC window are confirmed unless attributed to dilution or otherwise noted on the Analysis Report.

Analysis Name: UST VOCs + GRO by 8260B-Water  
Batch number: F160081AA

	Dibromofluoromethane	1,2-Dichloroethane-d4	Toluene-d8	4-Bromofluorobenzene
8193485	101	100	99	89
8193486	97	97	99	92
8193487	99	100	99	103
8193488	99	98	96	89
8193489	100	94	99	91
8193490	98	96	96	92
8193491	98	98	96	93
Blank	101	98	96	88
LCS	99	101	98	91
LCSD	99	97	99	92
MS	101	102	99	95
MSD	97	100	96	94
Limits:	80-116	77-113	80-113	78-113

\*- Outside of specification

\*\* - This limit was used in the evaluation of the final result for the blank

(1) The result for one or both determinations was less than five times the LOQ.

(2) The unspiked result was more than four times the spike added.

P##### is indicative of a Background or Unspiked sample that is batch matrix QC and was not performed using a sample from this submission group.



Client: Blaine Tech

**Delivery and Receipt Information**

Delivery Method:	<u>UPS</u>	Arrival Timestamp:	<u>12/31/2015 11:50</u>
Number of Packages:	<u>1</u>	Number of Projects:	<u>1</u>
State/Province of Origin:	<u>CA</u>		

**Arrival Condition Summary**

Shipping Container Sealed:	Yes	Sample IDs on COC match Containers:	Yes
Custody Seal Present:	Yes	Sample Date/Times match COC:	Yes
Custody Seal Intact:	Yes	VOA Vial Headspace ≥ 6mm:	No
Samples Chilled:	Yes	Total Trip Blank Qty:	2
Paperwork Enclosed:	Yes	Trip Blank Type:	HCl
Samples Intact:	Yes	Air Quality Samples Present:	No
Missing Samples:	No		
Extra Samples:	No		
Discrepancy in Container Qty on COC:	No		

*Unpacked by Wesley Miller (2308) at 12:32 on 12/31/2015*

**Samples Chilled Details**

Thermometer Types: DT = Digital (Temp. Bottle) IR = Infrared (Surface Temp) All Temperatures in °C.

Cooler #	Thermometer ID	Corrected Temp	Therm. Type	Ice Type	Ice Present?	Ice Container	Elevated Temp?
1	DT131	1.0	DT	Wet	Y	Bagged	N

# Explanation of Symbols and Abbreviations

The following defines common symbols and abbreviations used in reporting technical data:

<b>RL</b>	Reporting Limit	<b>BMQL</b>	Below Minimum Quantitation Level
<b>N.D.</b>	none detected	<b>MPN</b>	Most Probable Number
<b>TNTC</b>	Too Numerous To Count	<b>CP Units</b>	cobalt-chloroplatinate units
<b>IU</b>	International Units	<b>NTU</b>	nephelometric turbidity units
<b>umhos/cm</b>	micromhos/cm	<b>ng</b>	nanogram(s)
<b>C</b>	degrees Celsius	<b>F</b>	degrees Fahrenheit
<b>meq</b>	milliequivalents	<b>lb.</b>	pound(s)
<b>g</b>	gram(s)	<b>kg</b>	kilogram(s)
<b>µg</b>	microgram(s)	<b>mg</b>	milligram(s)
<b>mL</b>	milliliter(s)	<b>L</b>	liter(s)
<b>m<sup>3</sup></b>	cubic meter(s)	<b>µL</b>	microliter(s)
		<b>pg/L</b>	picogram/liter
<b>&lt;</b>	less than		
<b>&gt;</b>	greater than		
<b>ppm</b>	parts per million - One ppm is equivalent to one milligram per kilogram (mg/kg) or one gram per million grams. For aqueous liquids, ppm is usually taken to be equivalent to milligrams per liter (mg/l), because one liter of water has a weight very close to a kilogram. For gases or vapors, one ppm is equivalent to one microliter per liter of gas.		
<b>ppb</b>	parts per billion		
<b>Dry weight basis</b>	Results printed under this heading have been adjusted for moisture content. This increases the analyte weight concentration to approximate the value present in a similar sample without moisture. All other results are reported on an as-received basis.		

## Laboratory Data Qualifiers:

- B - Analyte detected in the blank
- C - Result confirmed by reanalysis
- E - Concentration exceeds the calibration range
- J (or G, I, X) - estimated value  $\geq$  the Method Detection Limit (MDL or DL) and  $<$  the Limit of Quantitation (LOQ or RL)
- P - Concentration difference between the primary and confirmation column  $>40\%$ . The lower result is reported.
- U - Analyte was not detected at the value indicated
- V - Concentration difference between the primary and confirmation column  $>100\%$ . The reporting limit is raised due to this disparity and evident interference...

Additional Organic and Inorganic CLP qualifiers may be used with Form 1 reports as defined by the CLP methods. Qualifiers specific to Dioxin/Furans and PCB Congeners are detailed on the individual Analysis Report.

## Analytical test results meet all requirements of the associated regulatory program (i.e., NELAC (TNI), DoD, and ISO 17025) unless otherwise noted under the individual analysis.

Measurement uncertainty values, as applicable, are available upon request.

Tests results relate only to the sample tested. Clients should be aware that a critical step in a chemical or microbiological analysis is the collection of the sample. Unless the sample analyzed is truly representative of the bulk of material involved, the test results will be meaningless. If you have questions regarding the proper techniques of collecting samples, please contact us. We cannot be held responsible for sample integrity, however, unless sampling has been performed by a member of our staff.

This report shall not be reproduced except in full, without the written approval of the laboratory.

Times are local to the area of activity. Parameters listed in the 40 CFR Part 136 Table II as "analyze immediately" are not performed within 15 minutes.

**WARRANTY AND LIMITS OF LIABILITY** - In accepting analytical work, we warrant the accuracy of test results for the sample as submitted. THE FOREGOING EXPRESS WARRANTY IS EXCLUSIVE AND IS GIVEN IN LIEU OF ALL OTHER WARRANTIES, EXPRESSED OR IMPLIED. WE DISCLAIM ANY OTHER WARRANTIES, EXPRESSED OR IMPLIED, INCLUDING A WARRANTY OF FITNESS FOR PARTICULAR PURPOSE AND WARRANTY OF MERCHANTABILITY. IN NO EVENT SHALL EUROFINS LANCASTER LABORATORIES ENVIRONMENTAL, LLC BE LIABLE FOR INDIRECT, SPECIAL, CONSEQUENTIAL, OR INCIDENTAL DAMAGES INCLUDING, BUT NOT LIMITED TO, DAMAGES FOR LOSS OF PROFIT OR GOODWILL REGARDLESS OF (A) THE NEGLIGENCE (EITHER SOLE OR CONCURRENT) OF EUROFINS LANCASTER LABORATORIES ENVIRONMENTAL AND (B) WHETHER EUROFINS LANCASTER LABORATORIES ENVIRONMENTAL HAS BEEN INFORMED OF THE POSSIBILITY OF SUCH DAMAGES. We accept no legal responsibility for the purposes for which the client uses the test results. No purchase order or other order for work shall be accepted by Eurofins Lancaster Laboratories Environmental which includes any conditions that vary from the Standard Terms and Conditions, and Eurofins Lancaster Laboratories Environmental hereby objects to any conflicting terms contained in any acceptance or order submitted by client.