



**CONESTOGA-ROVERS
& ASSOCIATES**

RECEIVED

1:06 pm, Mar 18, 2008

Alameda County
Environmental Health

5900 Hollis Street, Suite A, Emeryville, California 94608
Telephone: 510-420-0700 Facsimile: 510-420-9170
www.CRAworld.com

August 28, 2007
-- Sent via e-mail --

Mr. Steven Plunkett, Hazardous Materials Specialist
Alameda County Health Care Services Agency Environmental Health Services
1131 Harbor Bay Parkway, Suite 250
Alameda, California 94502
510/383-1767

Re: **Sampling Data and Phase II Offsite Characterization**
Former Exxon Service Station
3055 35th Avenue, Oakland, California
Fuel Leak Case No. RO0000271
CRA Project No. 130105

Dear Mr. Plunkett,

Per your request, attached are the results from the latest onsite characterization and Phase I offsite characterization for the subject site. We would like to proceed with our Phase II offsite characterization, with the additional of soil gas sampling and analysis, pending your approval. Please see the attached figure with proposed Phase II sampling locations. Upon your approval of these locations, we will attempt to receive access agreements from the property owners. We would also like to sample for soil gas from 5 feet bgs at each location and analyze for TPHg and Benzene, using the protocol in our Work Plan. We also propose to collect soil gas adjacent to location B-16 (Phase I). Because of the Phase II sampling event, general difficulty in acquiring access agreements, and adding of soil gas characterization, we will need an extension for submittal Site Characterization Report. As soon as we receive approved access agreements, we can provide you with a submittal date for the Site Characterization Report.

Please get back to us as soon as you can so we can proceed with the Phase II offsite characterization.

Thank you for your time and consideration

Sincerely,

Conestoga-Rovers & Associates, Inc.

Mark Jonas, P.G.
Senior Project Manager

Attachment: Onsite and Phase I Offsite Results and Graphics. Proposed Phase II Offsite Locations.

cc: Mr. Lynn Worthington, Golden Empire Properties, Inc. 5942 MacArthur Blvd., Suite B, Oakland, CA 94605
Mr. Jeffrey Lawson, Silicon Valley Law Group, 25 Metro Drive, Suite 600, San Jose, CA 95110

I:\IR\Golden Empire Properties\Correspondence\2007\Letter Data 8-28-2007 - GEP RO0000271 130105.doc

Equal
Employment
Opportunity Employer

Conestoga-Rovers & Associates

Table 1. Soil Analytical Data - Petroleum Hydrocarbons - Former Exxon Service Station, 3055 35th Avenue, Oakland, California

Sample ID	Date Sampled	Sample Depth (ft)	GW Depth (ft)	TPHg	TPHd	Concentrations in mg/kg					MTBE	Notes
						Benzene	Toluene	Ethylbenzene	Xylenes			
B1	11/5/1991	15	---	19	---	0.15	0.34	0.14	1.6	---		
B1	11/5/1991	20	---	1500	---	56	44	24	140	---		
B1	11/5/1991	30	---	<1.0	---	0.013	0.013	0.013	0.015	---		
B1	11/5/1991	35	---	<1.0	---	0.015	<0.0050	<0.0050	0.026	---		
B2	11/5/1991	15	---	290	---	0.057	1.3	3.8	17	---		
B2	11/5/1991	25	---	4.7	---	<0.0050	<0.0050	<0.0050	0.12	---		
B2	11/5/1991	35	---	<1.0	---	<0.0050	<0.0050	<0.0050	<0.0050	---		
B3	11/6/1991	15	---	45	---	3.4	3.6	1.2	7.5	---		
B3	11/6/1991	20	---	130	---	1.9	4.7	2.4	19	---		
B3	11/6/1991	25	---	<1.0	---	<0.0050	<0.0050	<0.0050	<0.0050	---		
B4	11/6/1991	25	---	1.0	---	0.27	0.18	0.018	0.17	---		
B4	11/6/1991	30	---	<1.0	---	<0.0050	0.0083	<0.0050	0.038	---		
B4	11/6/1991	35	---	<1.0	---	<0.0050	<0.0050	<0.0050	<0.0050	---		
B5	11/6/1991	15	---	660	---	1.8	4.1	8.9	29	---		
B5	11/6/1991	20	---	97	---	3.2	1.2	1.7	4.6	---		
B5	11/6/1991	25	---	<1.0	---	<0.0050	<0.0050	<0.0050	<0.0050	---		
B6	11/6/1991	15	---	1200	---	6.6	21	18	98	---		
B6	11/6/1991	20	---	7.3	---	1.5	1.5	0.36	1.8	---		
B6	11/6/1991	25	---	1.7	---	0.13	0.22	0.066	0.43	---		
B7	11/6/1991	15	---	2100	<1.0	28	100	38	290	---	ND VOCs/SVOCs	
B7	11/6/1991	25	---	1.0	---	0.03	0.018	0.0058	0.06	---		
B7	11/6/1991	30	---	<1.0	---	<0.0050	<0.0050	<0.0050	<0.0050	---		
B8	11/6/1991	15	---	<1.0	---	<0.0050	<0.0050	<0.0050	<0.0050	---		
B8	11/6/1991	25	---	<1.0	---	<0.0050	<0.0050	<0.0050	<0.0050	---		
B9	11/6/1991	15	---	480	---	5.9	23	8.9	72	---		
B10	11/6/1991	15	---	76	---	1.7	5.1	1.3	13	---		
B10	11/6/1991	20	---	260	---	7.3	21	6.6	54	---		
B10	11/6/1991	25	---	1.0	---	0.037	0.059	0.0089	0.064	---		
B10	11/6/1991	30	---	1.0	---	0.022	0.017	<0.0050	0.011	---		
B11	11/6/1991	15	---	20	---	0.034	0.033	0.55	1.0	---		
B11	11/6/1991	20	---	11	---	1.4	0.15	0.68	1.8	---		
B11	11/6/1991	25	---	<1.0	---	<0.0050	<0.0050	<0.0050	<0.0050	---		
B12	11/6/1991	15	---	5.6	---	1.0	0.75	0.11	0.91	---		
B12	11/6/1991	25	---	<1.0	---	<0.0050	<0.0050	<0.0050	<0.0050	---		
B12	11/6/1991	30	---	<1.0	---	<0.0050	<0.0050	<0.0050	<0.0050	---		
SB-A	5/5/94	11	14.5	3.4	4.2	<10	0.0072	0.0015	0.015	0.031	a	
SB-A	5/5/94	16	---	1,600	620	<1,000	1.8	3.4	17	54	a	
SB-B	5/6/94	11	15.0	170	52	<100	0.45	2.5	1.7	11	a	
SB-B	5/6/94	16	---	940	120	<100	6.3	28	12	70	a	
SB-C	5/6/94	11	13.9	25	6.7	<10	0.22	0.62	0.49	2.1	a	
(MW-3)	5/6/94	16	---	490	280	<500	1.9	14	7.4	42	a	

Conestoga-Rovers & Associates

Table 1. Soil Analytical Data - Petroleum Hydrocarbons - Former Exxon Service Station, 3055 35th Avenue, Oakland, California

Sample ID	Date Sampled	Sample Depth (ft)	GW Depth (ft)	TPHg	TPHd	Concentrations in mg/kg					Notes
						Benzene	Toluene	Ethylbenzene	Xylenes	MTBE	
SB-D	5/6/94	11	19.5	<1	5.2	<10	<0.0025	<0.0025	<0.0025	<0.0025	
SB-D	5/6/94	16	---	<1	<1	<10	<0.0025	<0.0025	<0.0025	<0.0025	
SB-E	5/9/94	11	dry boring	220	56	<10	0.55	2.1	1.7	2.8	a
SB-E	5/9/94	16		3.8	1.4	<10	0.19	0.20	0.059	0.20	a
SB-F	5/9/94	11	13.3	370	57	<10	<0.25	<0.25	3.9	6.2	a
(MW-2)	5/9/94	15	---	2,900	450	<100	24	41	48	196	a
SB-G	5/9/94	11	14.5	20	18	<10	0.061	0.014	0.093	0.34	a
(MW-1)	5/9/94	15	---	390	52	<10	1.4	6.1	3.9	16	b
MW-4-10	2/26/97	10	---	64	62	0.24	1.1	0.7	2.6	<0.2	c,d
MW-4-15	2/26/97	15	---	530	150	5.1	18	8.4	39	5.4	c,d
<i>Offsite Soil Borings - 2007</i>											
B-13-12'	7/13/07	12	---	<1.0	<1.0	<0.005	<0.005	<0.005	<0.005	(<0.005)	
B-13-14'	7/13/07	14	---	1.3	<1.0	<0.005	<0.005	<0.005	<0.005	(<0.005)	g
B-13-16'	7/13/07	16	---	69	17	0.022	0.49	0.27	0.074	(<0.005)	c,d,e,h
B-13-20'	7/13/07	20	---	2.9	<1.0	<0.005	0.034	0.017	0.077	(<0.005)	c,e
B-13-24'	7/13/07	24	---	<1.0	<1.0	<0.005	<0.005	<0.005	<0.005	(<0.005)	
B-14-12'	7/13/07	12	---	92	37	0.083	0.55	1.0	0.69	(<0.010)	d,e,f,h
B-14-14'	7/13/07	14	---	430	52	4.6	1.8	6.4	28	(<0.050)	c,d
B-14-16'	7/13/07	16	---	210	39	4.4	5.4	3	18	(<0.050)	c,d,h
B-14-18'	7/13/07	18	---	55	11	0.28	0.34	0.46	3.4	(<0.005)	c,d
B-14-20'	7/13/07	20	---	69	5.2	3.5	1.8	1.1	6.7	(<0.010)	c,d,h
B-14-22'	7/13/07	22	---	15	2	1.1	0.19	0.25	0.65	(<0.005)	c,d,h
B-14-24'	7/13/07	24	---	1.1	<1.0	0.027	0.0071	0.0073	0.013	(0.021)	c
B-14-26'	7/13/07	26	---	<1.0	<1.0	<0.005	<0.005	<0.005	<0.005	(0.15)	
B-15-10'	7/12/07	10	---	34	17	0.074	0.20	0.21	0.08	(<0.005)	c,d,e,h
B-15-12'	7/12/07	12	---	200	44	0.54	0.95	2.5	5.4	(<0.010)	c,d
B-15-14'	7/12/07	14	---	480	100	2	1.9	8	26	(<0.010)	d,e,f,h
B-16-5'	7/20/07	5	---	<1.0	<1	<0.005	<0.005	<0.005	<0.005	(<0.05)	
B-16-10'	7/20/07	10	---	430	75	1.5	2.1	4.4	21	(<1.0)	d,f,e
B-16-12'	7/20/07	12	---	4300	310	41	23	59	320	(<50)	c,d
B-16-14'	7/20/07	14	---	9.9	3	0.26	0.044	0.24	1.2	(<0.17)	c,d
B-16-16'	7/20/07	16	---	38	3.1	0.79	0.2	0.4	2.7	(<0.25)	c,d,e
B-16-18'	7/20/07	18	---	350	55	7	9.6	5.3	31	(<2.5)	c,d
B-16-20'	7/20/07	20	---	56	2.6	3	1.8	0.75	4.4	(<0.5)	c,d
B-16-24'	7/20/07	24	---	<1.0	<1.0	<0.005	<0.005	<0.005	<0.005	(<0.05)	
B-17-5'	7/20/07	5	---	<1.0	<1.0	<0.005	<0.005	<0.005	<0.005	(<0.05)	
B-17-10'	7/20/07	10	---	<1.0	<1.0	<0.005	<0.005	<0.005	<0.005	(<0.05)	
B-17-12'	7/20/07	12	---	<1.0	<1.0	<0.005	<0.005	<0.005	<0.005	(<0.05)	
B-17-14'	7/20/07	14	---	<1.0	<1.0	<0.005	<0.005	<0.005	<0.005	(<0.05)	
B-17-16'	7/20/07	16	---	<1.0	<1.0	<0.005	<0.005	<0.005	<0.005	(<0.05)	
B-17-18'	7/20/07	18	---	<1.0	<1.0	<0.005	<0.005	<0.005	<0.005	(<0.05)	
B-17-20'	7/20/07	20	---	<1.0	<1.0	<0.005	<0.005	<0.005	<0.005	(<0.05)	
B-17-22'	7/20/07	22	---	<1.0	<1.0	<0.005	<0.005	<0.005	<0.005	(<0.05)	
B-17-24'	7/20/07	24	---	<1.0	<1.0	<0.005	<0.005	<0.005	<0.005	(<0.05)	

Conestoga-Rovers & Associates

Table 1. Soil Analytical Data - Petroleum Hydrocarbons - Former Exxon Service Station, 3055 35th Avenue, Oakland, California

Sample ID	Date	Sample	GW	TPHg	TPHd	Benzene	Toluene	Ethylbenzene	Xylenes	MTBE	Notes
	Sampled	Depth (ft)	Depth (ft)	Concentrations in mg/kg							

Abbreviations:

ft = feet
 mg/kg = milligrams per kilogram
 < x = Not detected above detection limit.
 TPHg = Total petroleum hydrocarbons as gasoline by modified EPA Method 8015
 TPHd = Total petroleum hydrocarbons as diesel by modified EPA Method 8015
 Benzene, Toluene, Ethylbenzene, and Xylenes by EPA Method 8020/8021B
 MTBE = Methyl Tertiary Butyl Ether by EPA Method 8020, or by EPA Method 8260 in parentheses
 B7-15 Metals: Cadmium 3.51 mg/kg, Chromium 25.1 mg/kg, Lead 3.19 mg/kg,
 Zinc 47.7 mg/kg, Nickel 34.3 mg/kg
 B7-15 Oil & Grease: ND (10 mg/kg)

Notes:

- (a) The positive TPHd response appears to be a lighter hydrocarbon than diesel
- (b) The positive TPHd result has an atypical chromatographic pattern
- (c) Unmodified or weakly modified gasoline is significant (TPHg)
- (d) Gasoline range compounds are significant (TPHd)
- (e) No recognizable pattern
- (f) Heavier gasoline range compounds are significant (aged gasoline?)
- (g) strongly aged gasoline or diesel range compounds are significant
- (h) diesel range compounds are significant; no recognizable pattern

Conestoga-Rovers & Associates

Table 2. Additional Soil Analytical Data -Former Exxon Service Station, 3055 35th Avenue, Oakland, California

Sample ID	Date Sampled	Sample Depth (ft)	TAME	TBA	EDB	Concentrations in mg/kg				Ethanol	Notes
						1,2-DCA	DIPE	ETBE			
<i>Offsite Soil Borings - 2007</i>											
B-13-12'	7/13/07	12	<0.005	<0.05	<0.005	<0.005	<0.005	<0.005	<0.005	<0.25	
B-13-14'	7/13/07	14	<0.005	<0.05	<0.005	<0.005	<0.005	<0.005	<0.005	<0.25	
B-13-16'	7/13/07	16	<0.005	<0.05	<0.005	<0.005	<0.005	<0.005	<0.005	<0.25	
B-13-20'	7/13/07	20	<0.005	<0.05	<0.005	<0.005	<0.005	<0.005	<0.005	<0.25	
B-13-24'	7/13/07	24	<0.005	<0.05	<0.005	<0.005	<0.005	<0.005	<0.005	<0.25	
B-14-12'	7/13/07	12	<0.010	<0.10	<0.010	<0.010	<0.010	<0.010	<0.010	<0.50	j
B-14-14'	7/13/07	14	<0.050	<0.50	<0.050	<0.050	<0.050	<0.050	<0.050	<2.5	j
B-14-16'	7/13/07	16	<0.050	<0.50	<0.050	<0.050	<0.050	<0.050	<0.050	<2.5	j
B-14-18'	7/13/07	18	<0.005	<0.05	<0.005	<0.005	<0.005	<0.005	<0.005	<0.25	
B-14-20'	7/13/07	20	<0.010	<0.10	<0.010	<0.010	<0.010	<0.010	<0.010	<0.50	j
B-14-22'	7/13/07	22	<0.005	<0.05	<0.005	<0.005	<0.005	<0.005	<0.005	<0.25	
B-14-24'	7/13/07	24	<0.005	<0.05	<0.005	<0.005	<0.005	<0.005	<0.005	<0.25	
B-14-26'	7/13/07	26	<0.005	<0.05	<0.005	<0.005	<0.005	<0.005	<0.005	<0.25	
B-15-10'	7/12/07	10	<0.005	<0.05	<0.005	<0.005	<0.005	<0.005	<0.005	<0.25	
B-15-12'	7/12/07	12	<0.010	<0.10	<0.010	<0.010	<0.010	<0.010	<0.010	<0.50	j
B-15-14'	7/12/07	14	<0.010	<0.10	<0.010	<0.010	<0.010	<0.010	<0.010	<0.50	j
B-16-5'	7/20/07	5	<0.005	<0.05	<0.005	<0.005	<0.005	<0.005	<0.005	<0.25	
B-16-10'	7/20/07	10	<0.10	<1.0	<0.10	<0.10	<0.10	<0.10	<0.10	<5.0	
B-16-12'	7/20/07	12	<0.50	<5.0	<0.50	<0.50	<0.50	<0.50	<0.50	<25	
B-16-14'	7/20/07	14	<0.005	<0.05	<0.005	<0.005	<0.005	<0.005	<0.005	<0.25	
B-16-16'	7/20/07	16	<0.010	<0.10	<0.010	<0.010	<0.010	<0.010	<0.010	<0.50	
B-16-18'	7/20/07	18	<0.10	<1.0	<0.10	<0.10	<0.10	<0.10	<0.10	<5.0	
B-16-20'	7/20/07	20	<0.020	<0.20	<0.020	<0.020	<0.020	<0.020	<0.020	<1.0	
B-16-24'	7/20/07	24	<0.005	<0.05	<0.005	<0.005	<0.005	<0.005	<0.005	<0.25	
B-17-5'	7/20/07	5	<0.005	<0.05	<0.005	<0.005	<0.005	<0.005	<0.005	<0.25	
B-17-10'	7/20/07	10	<0.005	<0.05	<0.005	<0.005	<0.005	<0.005	<0.005	<0.25	
B-17-12'	7/20/07	12	<0.005	<0.05	<0.005	<0.005	<0.005	<0.005	<0.005	<0.25	
B-17-14'	7/20/07	14	<0.005	<0.05	<0.005	<0.005	<0.005	<0.005	<0.005	<0.25	
B-17-16'	7/20/07	16	<0.005	<0.05	<0.005	<0.005	<0.005	<0.005	<0.005	<0.25	
B-17-18'	7/20/07	18	<0.005	<0.05	<0.005	<0.005	<0.005	<0.005	<0.005	<0.25	
B-17-20'	7/20/07	20	<0.005	<0.05	<0.005	<0.005	<0.005	<0.005	<0.005	<0.25	
B-17-22'	7/20/07	22	<0.005	<0.05	<0.005	<0.005	<0.005	<0.005	<0.005	<0.25	
B-17-24'	7/20/07	24	<0.005	<0.05	<0.005	<0.005	<0.005	<0.005	<0.005	<0.25	

Abbreviations:

ft = feet

mg/kg = milligrams per kilogram

< x = Not detected above detection limit.

Conestoga-Rovers & Associates

Table 3. Grab Groundwater Analytical Data - Former Exxon Service Station, 3055 35th Avenue, Oakland, California

Sample ID	Date	GW Depth (ft)	TPHg	TPHd	Benzene	Toluene	Ethylbenzene	Xylenes	MTBE	TAME	TBA	EDB	1,2-DCA	DIPE	ETBE	Ethanol	Notes
<i>Offsite Borings - 2007</i>																	
B-13	7/16/2007	14.61	8,000	7,100	110	390	250	990	1,500	<50	<500	<50	<50	<50	<50	<5,000	a,b,d,g
B-14	7/13/2007	14.05	1,100	270	150	55	34	170	3,500	<50	<500	<50	<50	<50	<50	<5,000	a,d,f
B-16	7/23/2007	12.50	69,000	6,000	7,700	1,500	1,600	8,200	430	<25	<250	<25	<25	<25	<25	<2500	a,d
B-17	7/23/2007	11.73	<50	<50	<0.5	<0.5	<0.5	<0.5	12	<0.5	<5	<0.5	<0.5	<0.5	<0.5	<50	

Methods and Abbreviations:

GW Depth = Groundwater depth measured in feet below ground surface
 ft = Measured in feet
 TPHg = Total petroleum hydrocarbons as gasoline by modified EPA Method SW8015C
 TPHd = Total petroleum hydrocarbons as diesel by modified EPA Method SW8015C
 TPHmo = Total petroleum hydrocarbons as motor oil by modified EPA Method SW8015C
 Benzene, Toluene, Ethylbenzene, and Xylenes by EPA Method SW8021B
 MTBE = Methyl tertiary-butyl ether by EPA Method SW8021B
 µg/L = Micrograms per liter, equivalent to parts per billion in water
 --- = Not observed/not analyzed

Notes:

a = unmodified or weakly modified gasoline is significant
 b = diesel range compounds are significant; no recognizable pattern
 d = gasoline range compounds are significant
 f = one to a few isolated peaks present
 g = oil range compounds are significant

Conestoga-Rovers & Associates

Table 4. Soil Gas Analytical Data - 3055 35th Avenue, Oakland, CA

Sample ID	Date Sampled	Sample Depth (ft)	TPHg	Benzene ← $\mu\text{g}/\text{m}^3$ →	MTBE
SV-1-5A	05/24/07	5	8,400	14	<4.2
SV-1-10	05/24/07	10	54,000	37	300
SV-2-5	05/24/07	5	13,000	38	<4.4
SV-2-10	05/24/07	10	300,000	78	210
SV-3-5	05/24/07	5	16,000	14	190
SV-3-10	05/24/07	10	31,000	35	<4.3
SV-4-5A	05/24/07	5	32,000	38	19
SV-4-10	05/24/07	10	480,000	930	<41
SV-5-5	05/24/07	5	53,000	99	16
SV-5-10	05/24/07	10	23,000	31	<4.2
SV-6-5	05/24/07	5	19,000	21	<4.4
SV-6-10	05/24/07	10	170,000	4,600	70
SV-4-10 Duplicate	5/24/07	10	620,000	1,100	<58
Trip Blank	5/24/07	--	ND	ND	ND

Abbreviations:

ft = feet

$\mu\text{g}/\text{m}^3$ = micrograms per cubic meter

<X or ND: Not detected above laboratory detection limit.

See Analytical Laboratory report for notes

TPHg = Total petroleum hydrocarbons as gasoline by modified EPA Method TO-3

Benzene by modified EPA Method TO-15

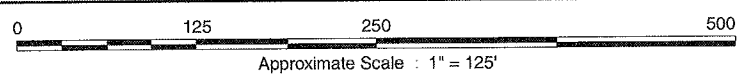
MTBE = Methyl Tertiary Butyl Ether by modified EPA Method TO-15



H:\WORTHINGTON - OAKLAND\FIGURES\AERIAL.AI

SOURCE: GOOGLE EARTH PRO

FIGURE
2



Former Exxon Station

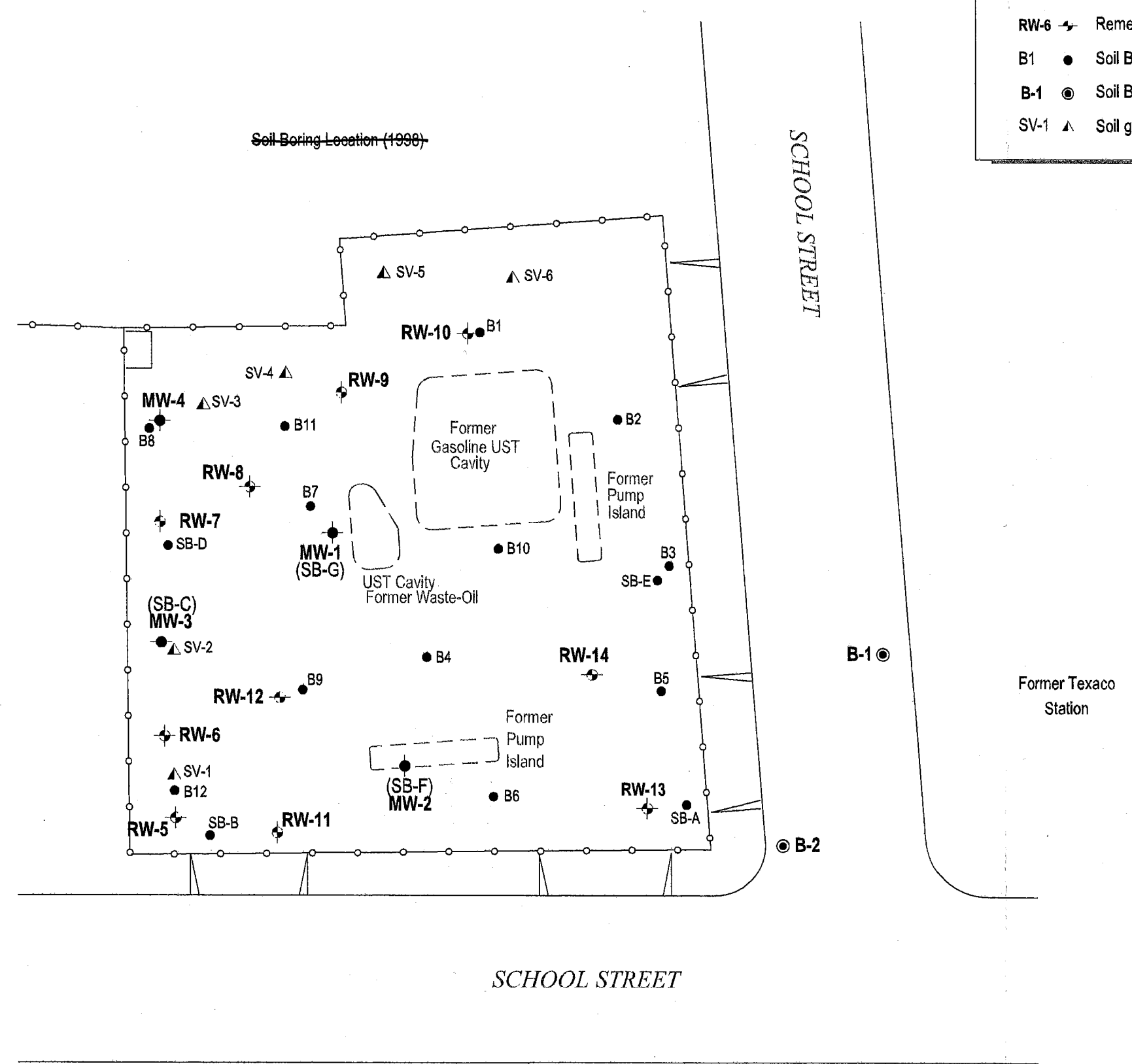
3035 35th Avenue
Oakland, California



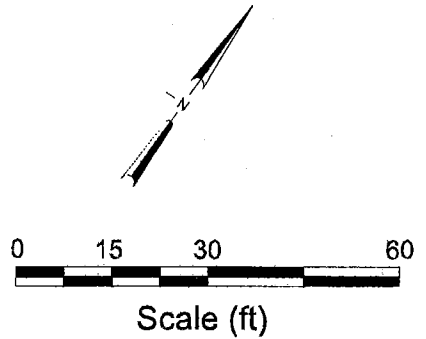
C A M B R I A

Aerial Photograph

EXPLANATION	
MW-1 ●	Monitoring well location
RW-6 ↗	Remediation well location
B1 ●	Soil Boring Location
B-1 ⊙	Soil Boring Location (1998)
SV-1 ▲	Soil gas location



Former Exxon Station
 3055 35th Avenue
 Oakland, California



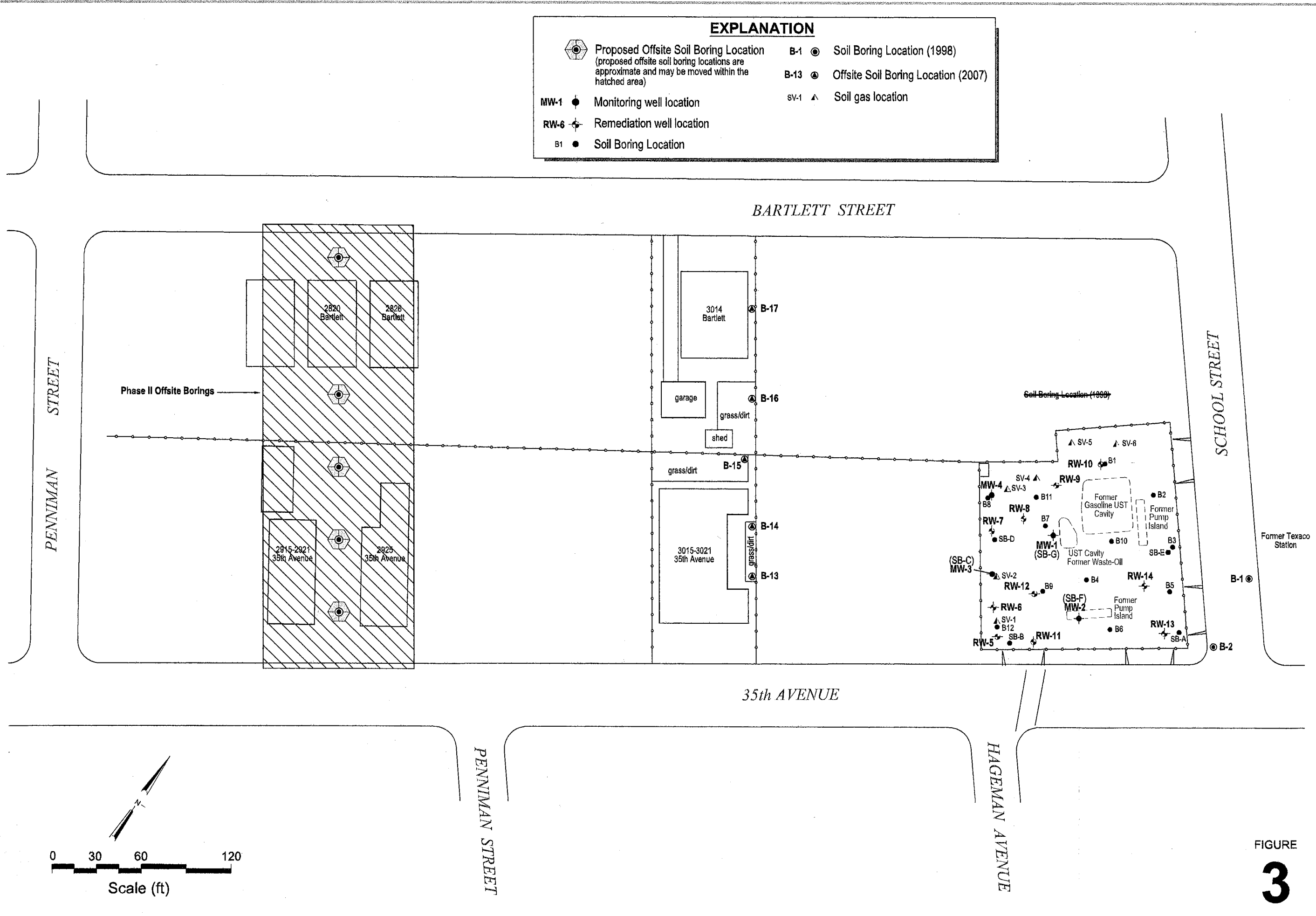
Source: Virgil Chavez Land Surveying

FIGURE
2

P:\WORTHINGTON\FIGURES\WORTHINGTON_SITEPLAN.DWG

EXPLANATION

	Proposed Offsite Soil Boring Location (proposed offsite soil boring locations are approximate and may be moved within the hatched area)	B-1	Soil Boring Location (1998)
MW-1	Monitoring well location	B-13	Offsite Soil Boring Location (2007)
RW-6	Remediation well location	SV-1	Soil gas location
B1	Soil Boring Location		



Proposed Offsite
Soil Boring Locations



Former Exxon Station
3055 35th Avenue
Oakland, California

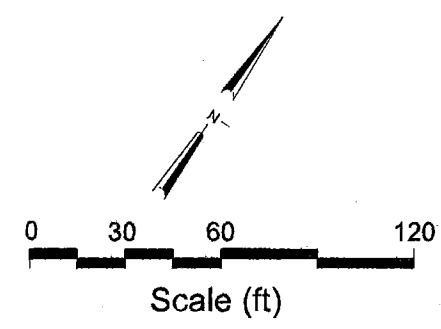


FIGURE
3

H:\GOLDEN EMP\PIRE\FIGURES\GOLDEN_PROPOSED-WELLS.DWG



Conestoga-Rovers & Associates, Inc.
 5900 Hollis Street, Suite A
 Emeryville, CA 94608
 Telephone: 510-420-0700
 Fax: 510-420-9170

SOIL BORING LOG

CLIENT NAME	Golden Empire Properties	BORING/WELL NAME	B-13
JOB/SITE NAME	GEP - Oakland	DRILLING STARTED	13-Jul-07
LOCATION	3055 35th Avenue, Oakland, CA	DRILLING COMPLETED	16-Jul-07
PROJECT NUMBER	130105	WELL DEVELOPMENT DATE (YIELD)	NA
DRILLER	RSI Drilling, C57#802335	GROUND SURFACE ELEVATION	Not Surveyed
DRILLING METHOD	Hydraulic push - dual tube	TOP OF CASING ELEVATION	Not Surveyed
BORING DIAMETER	2.5-inches	SCREENED INTERVALS	NA
LOGGED BY	G. Reiss	DEPTH TO WATER (First Encountered)	NA
REVIEWED BY	M. Jonas, PG# 6392	DEPTH TO WATER (Static)	14.61 fbg (16-Jul-07)
REMARKS	No PID readings due to malfunction. Grab gw sample collected on 7/16/07 using disposable bailer. Boring grouted on 7/16/07.		

PID (ppm)	TPHg (mg/kg)	SAMPLE ID	EXTENT	DEPTH (fbg)	U.S.C.S.	GRAPHIC LOG	LITHOLOGIC DESCRIPTION	CONTACT DEPTH (fbg)	WELL DIAGRAM
		B-13@ 5'		5	SC		FILL: Clayey SILT with gravel: Dusky brown (5YR 2/2); soft; dry; 30% clay, 60% silt, 10% gravel; non-plastic; moderate estimated permeability.	2.0	
					CL		CLAY with sand: Moderate yellowish brown (10YR 5/4); soft; dry; 90% clay, 10% fine to medium grained sand; medium plasticity; low estimated permeability.	3.0	
					CL		CLAY with sand and gravel: Moderate yellowish brown (10YR 5/4); medium dense; dry; 80% clay, 10% fine to coarse grained sand, 10% gravel; medium plasticity; low estimated permeability.	4.0	
					SC		Clayey SAND with gravel: Moderate yellowish brown (10YR 5/4); medium dense; dry; 20% clay, 70% sand, 10% gravel; non-plastic; moderate estimated permeability.	6.0	
					SC		Clayey SAND with gravel and silt: Moderate yellowish brown (10YR 5/4); medium dense; dry; 20% clay, 10% silt, 60% sand, 10% gravel; non-plastic; moderate estimated permeability.	9.0	
<1.0		B-13@ 12'		12	SC		Sandy CLAY: Moderate yellowish brown (10YR 5/4); medium dense; dry; 70% clay, 30% sand; low plasticity; low estimated permeability.	11.0	
1.3		B-13@ 14'		14	CL		Clayey SAND trace gravel: Moderate yellowish brown (10YR 5/4); dense; dry; 30% clay, 65% fine to coarse grained sand, 5% fine gravel; low plasticity; moderate estimated permeability.	14.0	
69		B-13@ 16'		16	CL		CLAY with sand: Moderate yellowish brown (10YR 5/4); hard; dry; 90% clay, 10% sand; medium plasticity; low estimated permeability.	16.0	
					SC		Clayey SAND: Moderate yellowish brown (10YR 5/4); dense; dry; 45% clay, 55% fine to medium grained sand; low plasticity; low estimated permeability.	20.0	
2.9		B-13@ 20'		20	CL		CLAY with sand: Moderate yellowish brown (10YR 5/4); hard; dry; 90% clay, 10% sand; low plasticity; low estimated permeability.	21.0	
					SC		Clayey SAND with gravel: Moderate yellowish brown (10YR 5/4); very dense; dry; 30% clay, 60% fine to coarse grained sand, 10% fine gravel; low plasticity; moderate estimated permeability.	24.0	
<1.0		B-13@ 24'		24	CL		Sandy CLAY: Moderate yellowish brown (10YR 5/4); very hard; dry; 80% clay, 20% sand; low plasticity; low estimated permeability.	25.0	
					SC		Clayey SAND: Moderate yellowish brown (10YR 5/4); very dense; dry; 30% clay, 70% fine to coarse grained sand; low plasticity; moderate estimated permeability.	28.0	
		B-13@ 28'		28	SC		Clayey SAND trace gravel: Moderate yellowish brown (10YR 5/4); very dense; dry;; 30% clay, 65% fine to coarse grained sand, 5% subangular gravel; low plasticity; moderate estimated permeability.	30.0	
		B-13@ 30'		30					

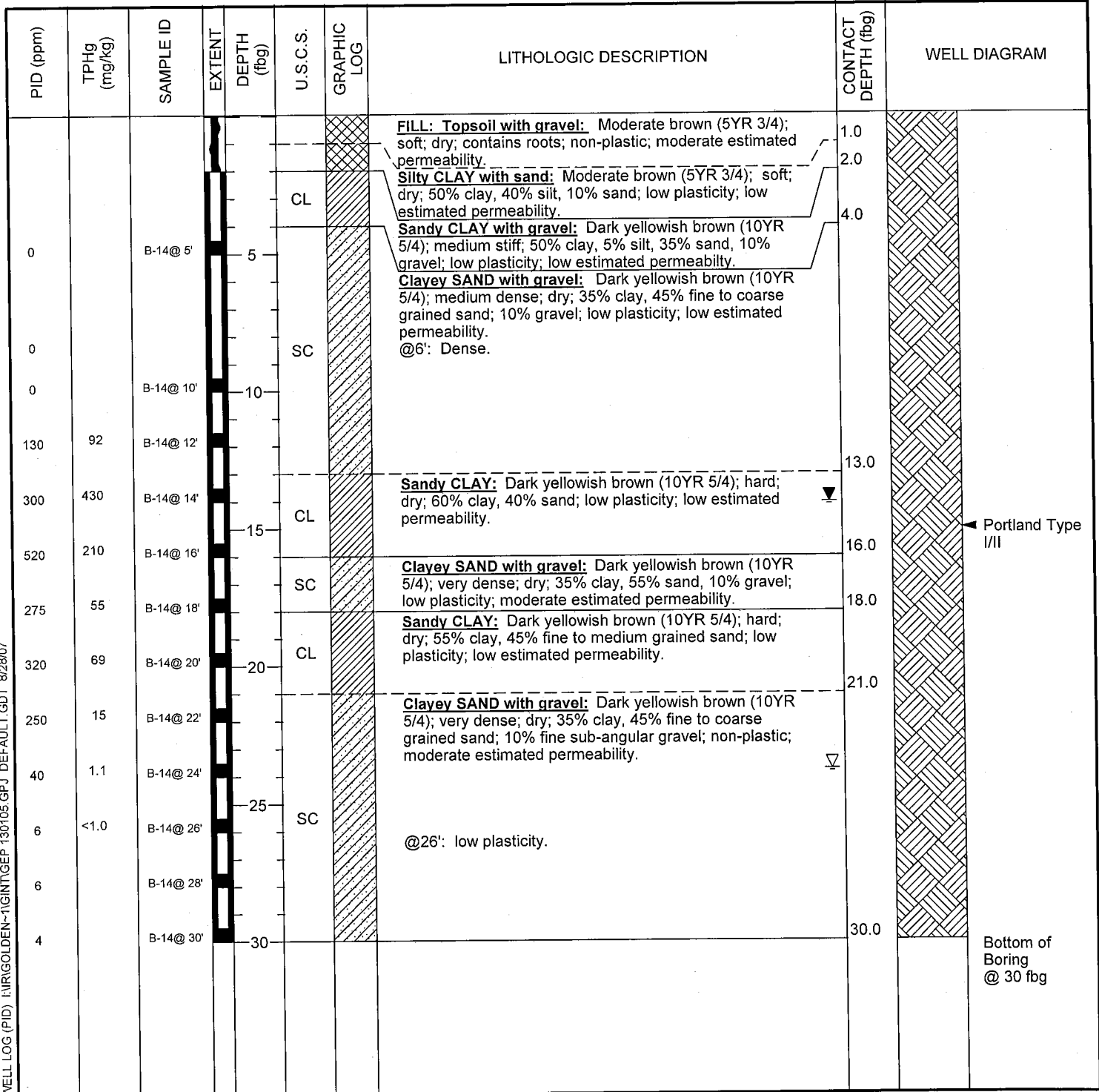
WELL LOG (PID) INIRAGOLDEN-1GINTGEP 130105.GPJ DEFAULT.GDT 8/28/07



Conestoga-Rovers & Associates, Inc.
 5900 Hollis Street, Suite A
 Emeryville, CA 94608
 Telephone: 510-420-0700
 Fax: 510-420-9170

SOIL BORING LOG

CLIENT NAME	Golden Empire Properties	BORING/WELL NAME	B-14
JOB/SITE NAME	GEP - Oakland	DRILLING STARTED	13-Jul-07
LOCATION	3055 35th Avenue, Oakland, CA	DRILLING COMPLETED	16-Jul-07
PROJECT NUMBER	130105	WELL DEVELOPMENT DATE (YIELD)	NA
DRILLER	RSI Drilling, C57#802335	GROUND SURFACE ELEVATION	Not Surveyed
DRILLING METHOD	Hydraulic push - dual tube	TOP OF CASING ELEVATION	Not Surveyed
BORING DIAMETER	2.5-inches	SCREENED INTERVALS	NA
LOGGED BY	G. Reiss	DEPTH TO WATER (First Encountered)	23.8 fbg (13-Jul-07) ▽
REVIEWED BY	M. Jonas, PG# 6392	DEPTH TO WATER (Static)	14.05 fbg (16-Jul-07) ▽
REMARKS	Grab groundwater sample collected on 7/13/07 using disposable bailer. Boring grouted on 7/16/07.		



WELL LOG (PID) I:\R\GOLDEN-1\GINT\GEP_130105.GPJ DEFAULT.GDT 8/28/07



Conestoga-Rovers & Associates, Inc.
 5900 Hollis Street, Suite A
 Emeryville, CA 94608
 Telephone: 510-420-0700
 Fax: 510-420-9170

SOIL BORING LOG

CLIENT NAME	Golden Empire Properties	BORING/WELL NAME	B-15
JOB/SITE NAME	GEP - Oakland	DRILLING STARTED	12-Jul-07
LOCATION	3055 35th Avenue, Oakland, CA	DRILLING COMPLETED	13-Jul-07
PROJECT NUMBER	130105	WELL DEVELOPMENT DATE (YIELD)	NA
DRILLER	RSI Drilling, C57#802335	GROUND SURFACE ELEVATION	Not Surveyed
DRILLING METHOD	Hydraulic push - dual tube	TOP OF CASING ELEVATION	Not Surveyed
BORING DIAMETER	2.5-inches	SCREENED INTERVALS	NA
LOGGED BY	G. Reiss	DEPTH TO WATER (First Encountered)	NA
REVIEWED BY	M. Jonas, PG# 6392	DEPTH TO WATER (Static)	NA
REMARKS	No grab groundwater sample collected - dry upon completion and after 24 hours. Boring grouted on 7/13/07.		

PID (ppm)	TPHg (mg/kg)	SAMPLE ID	EXTENT DEPTH (ft)	U.S.C.S.	GRAPHIC LOG	LITHOLOGIC DESCRIPTION	CONTACT DEPTH (ft)	WELL DIAGRAM
0		B-15@ 5'	5	SM		FILL: Silty GRAVEL with sand: Grayish brown (5YR 3/2); dense; dry; 40% silt, 10% sand, 50% gravel including broken glass; non-plastic; high estimated permeability.	3.0	
0				SM		Silty SAND with clay: Moderate yellowish brown (10YR 5/4); very dense; dry; 10% clay, 30% silt, 60% fine grained sand; non-plastic; low estimated permeability.	6.0	
0	34	B-15@ 10'	10	SM		Silty SAND with clay and gravel: Moderate yellowish brown (10YR 5/4); very dense; dry; 10% clay, 30% silt, 50% fine to coarse grained sand, 10% gravel; non-plastic; low estimated permeability.	9.0	
58	200	B-15@ 12'	12	SC		Clayey SAND with silt: Moderate yellowish brown (10YR 5/4); very dense; dry; 40% clay, 10% silt, 50% fine to coarse grained sand; low plasticity; low estimated permeability.	13.0	
360	480	B-15@ 14'	14	SC		Clayey SAND with gravel: Moderate yellowish brown (10YR 5/4); very dense; dry; 40% clay, 50% fine to coarse grained sand, 10% gravel; low plasticity; low estimated permeability. @10': Medium dense. @15': Moist; medium plasticity.	16.5	
186			15	SC		Clayey SAND with gravel: Moderate yellowish brown (10YR 5/4); very dense; dry; 40% clay, 50% fine to coarse grained sand, 10% gravel; low plasticity; low estimated permeability. @15': Moist; medium plasticity.	16.5	
			15			Boring refusal @ 16.5' bgs using limited access Minuteman direct push rig.		Bottom of Boring @ 16.5 fbg

WELL LOG (PID) \\NIR\GOLDEN-1\GINT\GEP 130105.GPJ DEFAULT.GDT 8/28/07



Conestoga-Rovers & Associates, Inc.
 5900 Hollis Street, Suite A
 Emeryville, CA 94608
 Telephone: 510-420-0700
 Fax: 510-420-9170

SOIL BORING LOG

CLIENT NAME	Golden Empire Properties	BORING/WELL NAME	B-16
JOB/SITE NAME	GEP - Oakland	DRILLING STARTED	20-Jul-07
LOCATION	3055 35th Avenue, Oakland, CA	DRILLING COMPLETED	23-Jul-07
PROJECT NUMBER	130105	WELL DEVELOPMENT DATE (YIELD)	NA
DRILLER	RSI Drilling, C57#802335	GROUND SURFACE ELEVATION	Not Surveyed
DRILLING METHOD	Hydraulic push - dual tube	TOP OF CASING ELEVATION	Not Surveyed
BORING DIAMETER	2.5-inches	SCREENED INTERVALS	NA
LOGGED BY	G. Reiss	DEPTH TO WATER (First Encountered)	NA
REVIEWED BY	M. Jonas, PG# 6392	DEPTH TO WATER (Static)	12.50 fbg (23-Jul-07)
REMARKS	Grab groundwater sample collected on 7/23/07 using disposable bailer. Boring grouted on 7/23/07.		

PID (ppm)	TPHg (mg/kg)	SAMPLE ID	EXTENT DEPTH (fbg)	U.S.C.S.	GRAPHIC LOG	LITHOLOGIC DESCRIPTION	CONTACT DEPTH (fbg)	WELL DIAGRAM
						FILL: Topsoil:	0.5	
				SM		Silty SAND: Moderate yellowish brown (10YR 5/4); medium dense; dry; 40% silt, 60% fine to coarse grained sand; non-plastic; high estimated permeability.	4.0	
0	<1.0	B-16@ 5'	5	SM		Silty SAND with clay: Moderate yellowish brown (10YR 5/4); medium dense; dry; 10% clay, 25% silt, 60% sand, 5% gravel; non-plastic; high estimated permeability.	8.0	
236	430	B-16@ 10'	10	CL		Silty Sandy CLAY: Moderate yellowish brown (10YR 5/4); medium stiff; dry; 50% clay, 30% silt, 20% fine to medium grained sand; low plasticity; low estimated permeability.	12.0	
192	4300	B-16@ 12'	12	SC		@11': Moist.	14.0	
136	9.9	B-16@ 14'	14	SC		Clayey SAND: Moderate yellowish brown (10YR 5/4); dense; moist; 40% clay, 60% fine to coarse grained sand; low plasticity; low estimated permeability.	16.0	
175	38	B-16@ 16'	16	CL		CLAY with sand and gravel: Moderate yellowish brown (10YR 5/4); hard; dry; 80% clay, 10% sand, 10% gravel; medium plasticity; low estimated permeability.	21.0	
301	350	B-16@ 18'	18	CL		Sandy CLAY: Moderate yellowish brown (10YR 5/4); hard; dry; 60% clay, 40% fine to medium grained sand; low plasticity; low estimated permeability.	24.0	
196	56	B-16@ 20'	20	CL				
0				SC		Clayey SAND: Moderate yellowish brown (10YR 5/4); dense; dry; 30% clay, 70% fine to medium grained sand; non-plastic; moderate estimated permeability.		
0	<1.0	B-16@ 24'	24	SC		@23': medium plasticity.		Bottom of Boring @ 24 fbg

WELL LOG (PID) \\IR\GOLDEN-1\GINT\GEP 130105.GPJ DEFAULT.GDT 8/28/07



Conestoga-Rovers & Associates, Inc.
 5900 Hollis Street, Suite A
 Emeryville, CA 94608
 Telephone: 510-420-0700
 Fax: 510-420-9170

SOIL BORING LOG

CLIENT NAME	Golden Empire Properties	BORING/WELL NAME	B-17
JOB/SITE NAME	GEP - Oakland	DRILLING STARTED	20-Jul-07
LOCATION	3055 35th Avenue, Oakland, CA	DRILLING COMPLETED	23-Jul-07
PROJECT NUMBER	130105	WELL DEVELOPMENT DATE (YIELD)	NA
DRILLER	RSI Drilling, C57#802335	GROUND SURFACE ELEVATION	Not Surveyed
DRILLING METHOD	Hydraulic push - dual tube	TOP OF CASING ELEVATION	Not Surveyed
BORING DIAMETER	2.5-inches	SCREENED INTERVALS	NA
LOGGED BY	G. Reiss	DEPTH TO WATER (First Encountered)	NA
REVIEWED BY	M. Jonas, PG# 6392	DEPTH TO WATER (Static)	11.73 fbg (23-Jul-07)
REMARKS	Grab groundwater sample collected on 7/23/07 using disposable bailer. Boring grouted on 7/23/07.		

PID (ppm)	TPHg (mg/kg)	SAMPLE ID	EXTENT	DEPTH (fbg)	U.S.C.S.	GRAPHIC LOG	LITHOLOGIC DESCRIPTION	CONTACT DEPTH (fbg)	WELL DIAGRAM
0	<1.0	B-17@ 5'		5	ML		FILL: Topsoil: Dusky yellowish brown (10YR 2/2); soft; dry; non-plastic; moderate estimated permeability. Clayey SILT: Grayish black (N2); soft; dry; 30% clay, 70% silt; non-plastic; moderate estimated permeability.	1.0	
0	<1.0	B-17@ 10'		10	CL		Sandy CLAY: Dark yellowish brown (10 YR 4/2); medium stiff; dry; 65% clay, 30% fine to coarse grained sand; medium plasticity; low estimated permeability.	4.0	
0	<1.0	B-17@ 12'		12	CL		CLAY with sand: Dark yellowish brown (10 YR 4/2); medium stiff; dry; 90% clay, 10% sand; medium plasticity; low estimated permeability.	7.0	
0	<1.0	B-17@ 14'		14	SC		Clayey SAND: Dark yellowish brown (10 YR 4/2); medium dense; dry; 30% clay, 70% sand; low plasticity; moderate estimated permeability.	13.0	
0	<1.0	B-17@ 16'		16	SC		Clayey Gravelly SAND: Dark yellowish brown (10 YR 4/2); medium dense; dry; 20% clay, 60% fine to coarse grained sand; 20% gravel; low plasticity; high estimated permeability.	14.0	
0	<1.0	B-17@ 18'		18	SC		Clayey SAND: Dark yellowish brown (10 YR 4/2); medium dense; moist; 30% clay, 70% sand; low plasticity; moderate estimated permeability.	16.0	
0	<1.0	B-17@ 20'		20	SC			21.0	
0	<1.0	B-17@ 22'		22	CL		Sandy CLAY with gravel: Dark yellowish brown (10 YR 4/2); hard; dry; 50% clay, 40% sand; 10% gravel; low plasticity; low estimated permeability.	24.0	
0	<1.0	B-17@ 24'		24				Bottom of Boring @ 24 fbg	

WELL LOG (PID) I:\RIGOLDEN-1\GINT\GEP_130105.GPJ DEFAULT.GDT 8/28/07