

## Seery, Scott, Env. Health

---

**From:** Seery, Scott, Env. Health  
**Sent:** Tuesday, May 06, 2003 4:15 PM  
**To:** 'aars@earthlink.net'  
**Subject:** RE: 800 San Pablo, Albany

Hi Tridib

I'm looking at the utility info you sent to me recently, and have a few questions/comments I need to resolve before I can continue:

1) It appears that the Montgomery Watson map sheet depicts the Berkeley utilities.

There is no key or other explanation provided on the map, but I think I can interpret some of the elements, but not others.

Looks like an 18" sanitary sewer (SS), among numerous other utilities, passes in front of site.

I presume invert depths of the manholes (MH) and other landmarks are actually depicted in feet above MSL. For example, it appears that at the intersection of Washington and San Pablo, MH 10-23 has an invert elevation of 33.02'. Further down San Pablo, MH 10-24 appears to have an invert elevation of 34.38'

Please confirm these assumptions, and provide a key / explanation for symbols / abbreviations to aid review of these data.

Please confirm flow direction.

Please provide specific data for remaining buried utilities along San Pablo.

Please provide buried utility data for Washington Ave.

2) I presume the Albany data is presented on the untitled map sheet.

As above, there is no key or other explanation provided, so I'm not sure what precisely I'm looking at.

I see no evident invert / elevation data for buried lines.

I assume, based on abbreviations, that there are vitrified clay (VC) pipes that could be either SD or SS.

I believe I can tell the flow directions, as there appear to be flow symbols appearing in-line with each trace. Curiously, lines on opposite sides of San Pablo appear to flow in opposite directions.

Please confirm these assumptions, and provide a key / explanation for symbols / abbreviations to aid review of these data.

Please confirm flow direction.

Please confirm presence or absence of other buried utilities in the subject areas.

That's all for now.

Scott

5/6/2003

Alameda County  
MAY 06 2003



ASSESSORS MAP 66.

Code Area No. 22-000

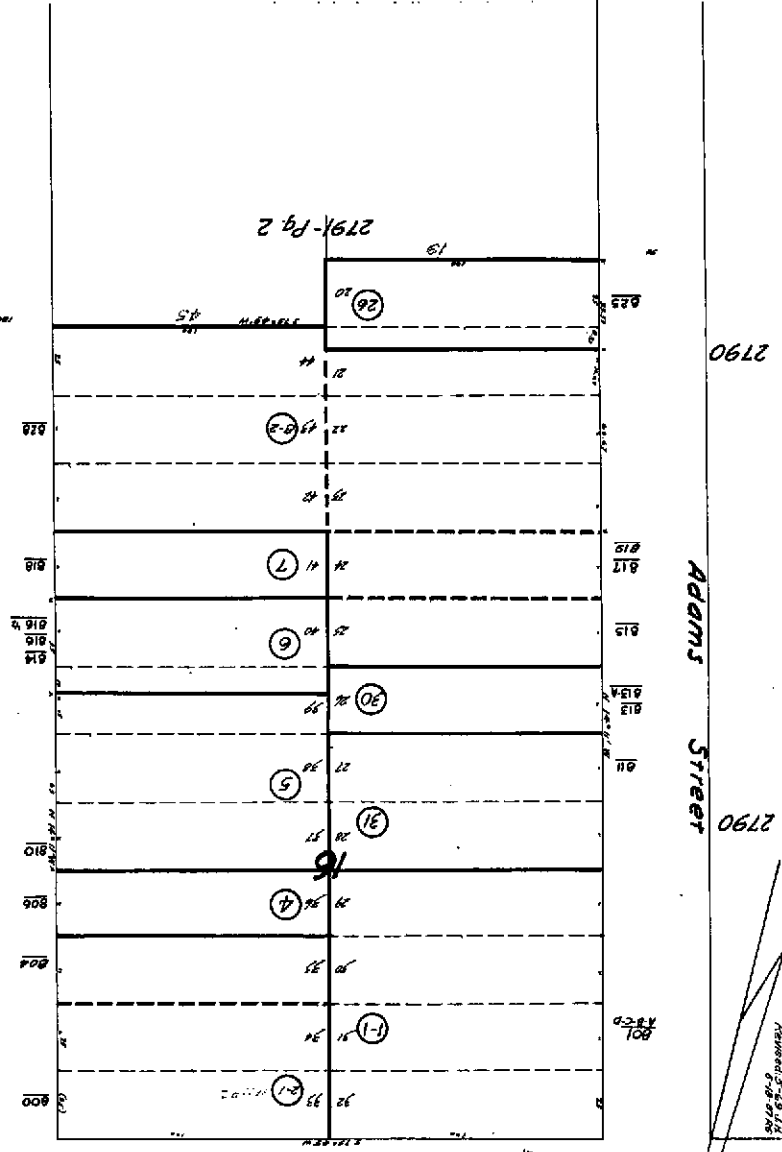
Amended Map of  
SUNSET TERRACE (DK 22 Pg. 60)

SCALE: 1" = 30'

2792-2  
Washington Avenue

2791  
Page 1  
2793

Revised 5-29-14  
078 9146



Adams Street

San Pablo Avenue

Washington Ave

2812

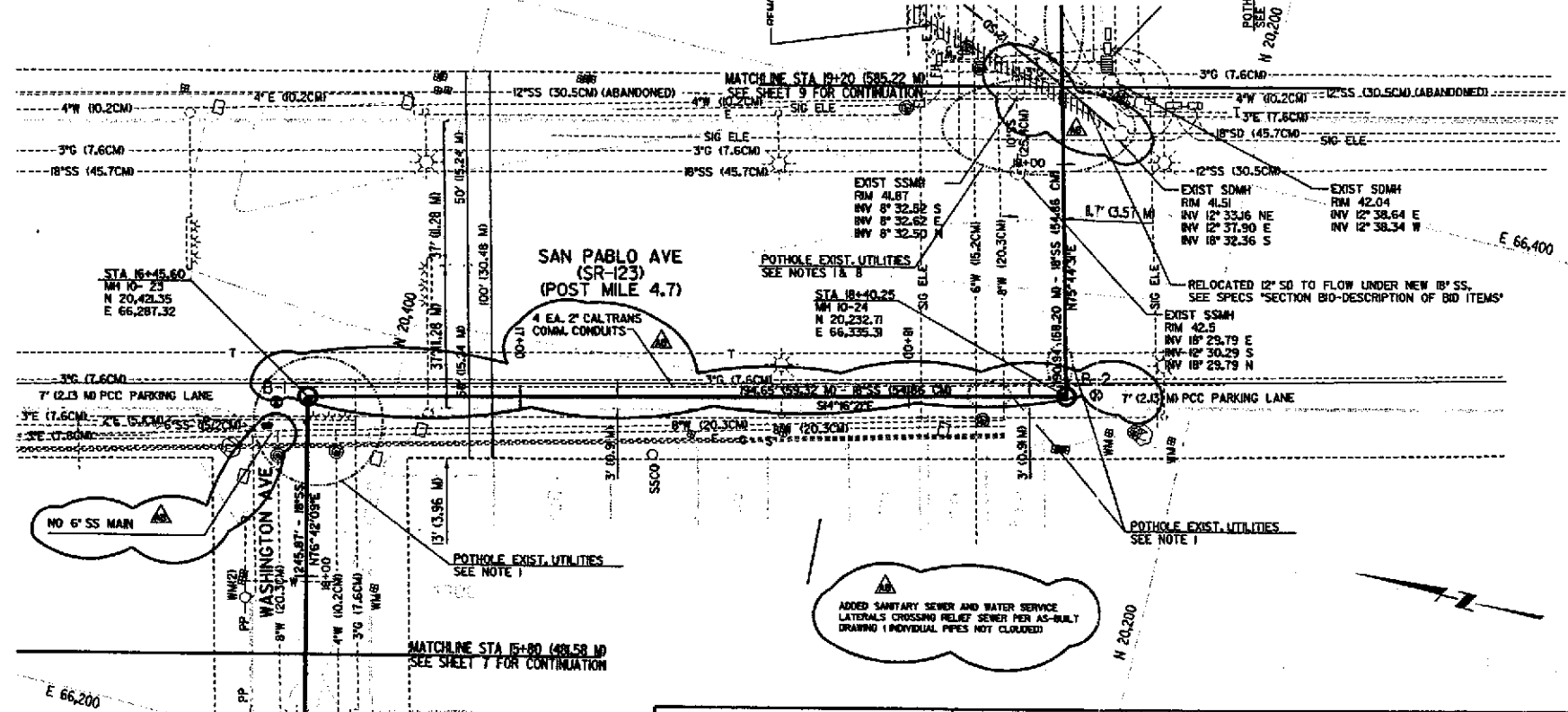
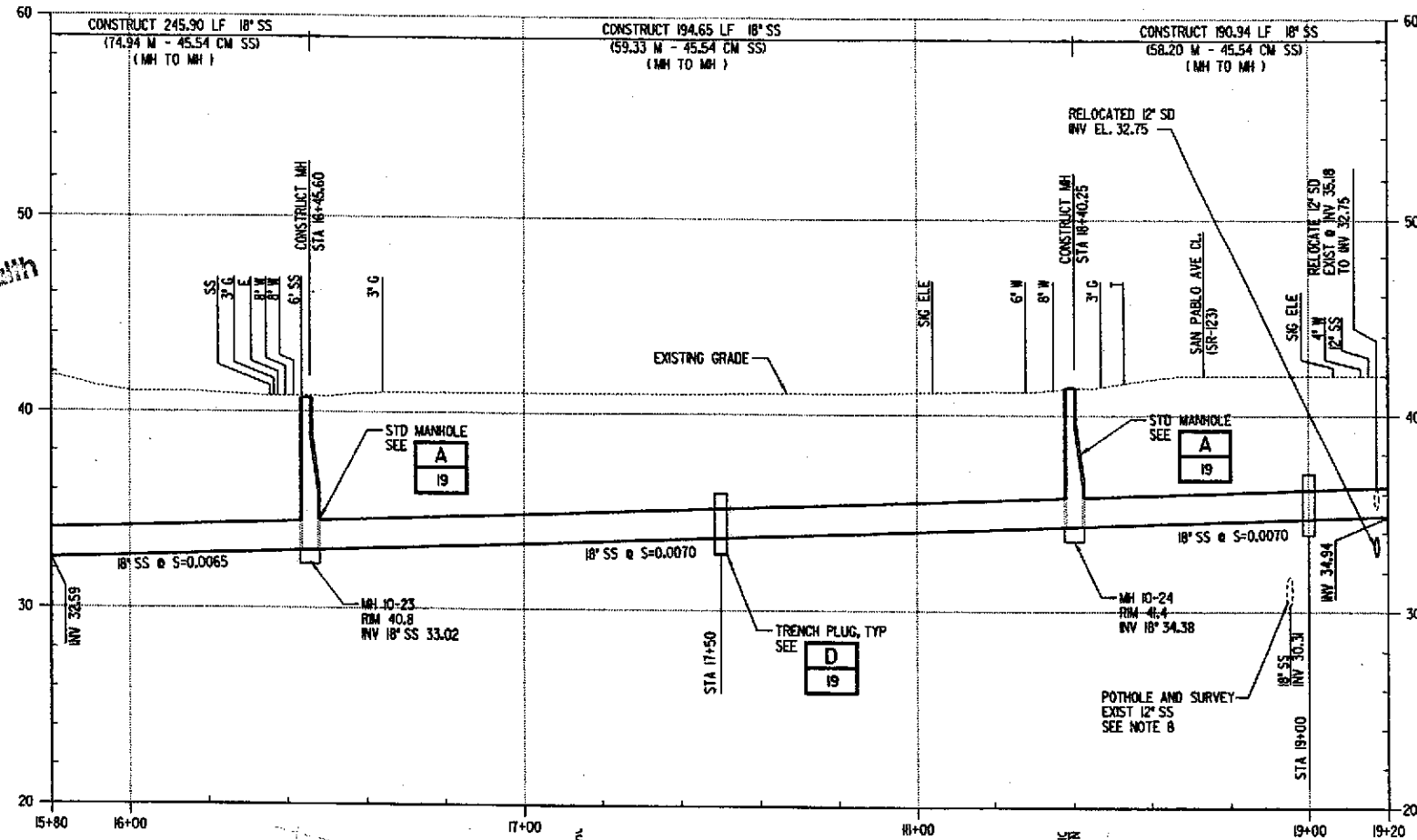
2799

2790

2790

2791-Pg 2

Alameda County  
MAY 06 2003  
Environmental Health



AS-BUILT (RECORD DRAWING)  
These record drawings have been prepared based on information provided by others. The Engineer has not verified the accuracy of such information and shall not be responsible for any errors or omissions which may be incorporated herein as a result. See original contract drawings for seal and signature.

NOTES:

1. NOTIFY U.S.A. AND POTHOLE ALL EXISTING UTILITIES PRIOR TO CONSTRUCTION. PROTECT EXISTING UTILITIES FROM DAMAGE. REPAIR ALL UTILITIES DAMAGED BY THE WORK. SEE NOTES G2 THROUGH G6, G3, AND G17.
2. PROTECT ALL CITY OF ALBANY SURVEY MONUMENTS. RE-ESTABLISH MONUMENTS AFFECTED BY THE WORK. SEE NOTE G29.
3. PROVIDE WRITTEN NOTIFICATIONS TO ALL RESIDENTS AND BUSINESSES DESCRIBING CONSTRUCTION ACTIVITIES. SEE NOTE G30.
4. PROTECT TREES AND TREE ROOTS FROM DAMAGE. SEE NOTES G9 AND G31.
5. COMPLY WITH ALL TRAFFIC CONTROL REQUIREMENTS. SEE SHEETS 20 THROUGH 26 AND SPECIFICATION SECTION 0570.
6. PERFORM WORK ON SHOWN ON THIS SHEET IN STRICT ACCORDANCE WITH THE REQUIREMENTS OF THE ENCROACHMENT PERMIT.
7. THE CONTRACTOR IS ADVISED THAT SAN PABLO AVENUE EXPERIENCES HIGH TRAFFIC FLOWS ON A DAILY BASIS. THE WORK SHALL BE PERFORMED AS NIGHT WORK ONLY. THE CONTRACTOR SHALL OBTAIN WRITTEN PERMISSION FOR NIGHT WORK FROM THE CITY OF ALBANY AND CALTRANS PRIOR TO CONSTRUCTION. THE CONTRACTOR SHALL INCLUDE PROVISIONS FOR NIGHT WORK IN ITS BID & TRAFFIC CONTROL PLAN.
8. PRIOR TO CONSTRUCTION THE CONTRACTOR SHALL POTHOLE THE ABANDONED 12" SS. REMOVE AS NECESSARY TO INSTALL NEW 18" SS. CONTRACTOR SHALL ALSO POTHOLE EXISTING 12" SS.
9. SEE NOTE G33.
10. PROVIDE TEMPORARY TYPE "K" CONCRETE RAILING FROM STA 16+45.60 TO 18+40.25 TO ISOLATE WORK FROM TRAFFIC. PROVIDE FLASHING BARRICADES.
11. SEE NOTE G37.
12. SEE DETAIL E/19 FOR TRENCH DETAIL ON SAN PABLO AVENUE

LOGIN NAME: fsebbin  
JOB No. \_\_\_\_\_  
FILE NAME: n:\alameda\berkeley\gk\berce05.dwg  
DATE: 12-OCT-2000  
TIME: 09:08

**MONTGOMERY WATSON**  
Walnut Creek, California

WARNING  
IF THIS BAR DOES NOT MEASURE 3",  
THEN DRAWING IS NOT TO SCALE  
FOR REDUCED PLANS - ORIGINAL SCALE IS IN INCHES

SUBMITTED	DATE	DESIGN	C.G.	HORIZ.	1" = 20'
SUPERVISING CIVIL ENGINEER	R.C.E.	EXP.	S.S.	VERT.	1" = 4'
APPROVED	DATE	CHECK	JAB	BOOK	
MANAGER OF ENGINEERING	R.C.E.	AS BUILT		DATE	

**CITY OF BERKELEY**  
DEPARTMENT OF PUBLIC WORKS  
WASHINGTON/ADAMS RELIEF SEWER PROJECT  
PLAN AND PROFILE  
STATION 15+80(481.58M) TO 19+20(585.22M)

REVISION	DATE	DESCRIPTION	APPROVAL
1			
AS-BUILT RECORD DRAWING AND CALTRANS CONDUIT AND SS MODIFICATIONS			
10-03-2000			
4	REVISION	APPROVAL	

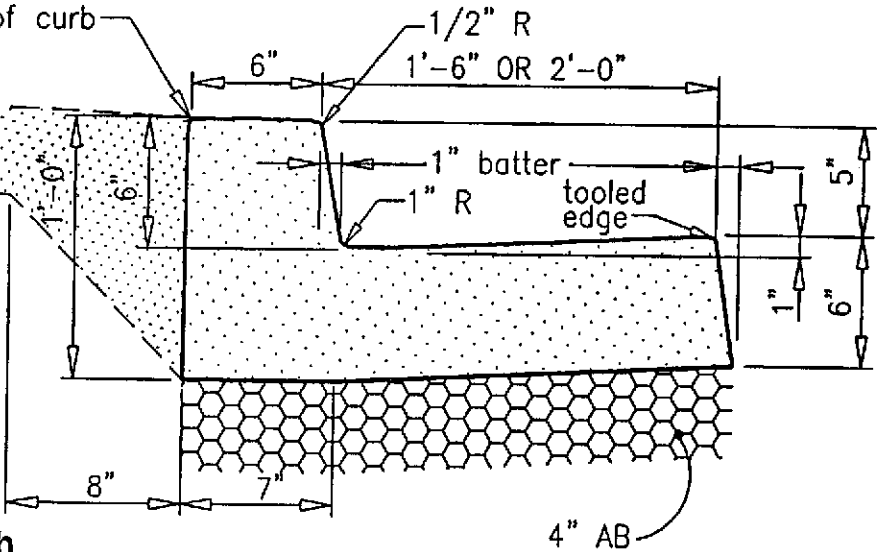
PLAN 1596  
FILE 502-492  
SHEET 8 OF 26

Score line at back of curb

4" PCC S/W per ST 3 or ST 5. Pour monolithic with C/G or use Detail "A" or Detail "B" below.

Alameda County

MAY 06 2003

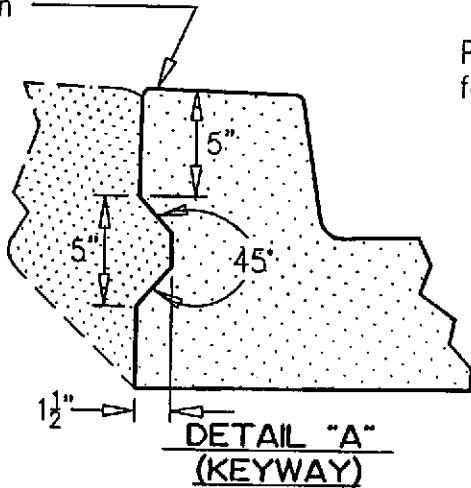


4" AB

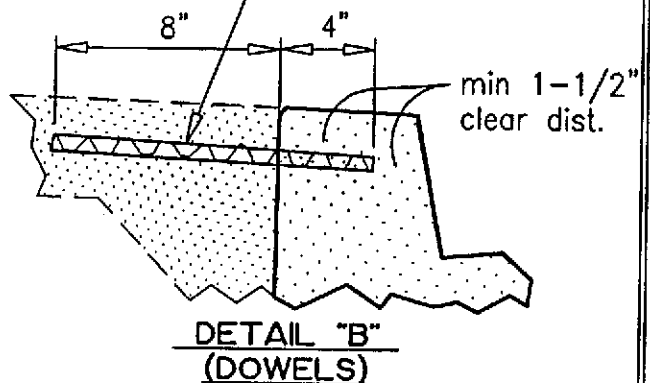
Place keyway ~~Environmental Health~~ entire length of C/G as shown

**VERTICAL CURB & GUTTER**

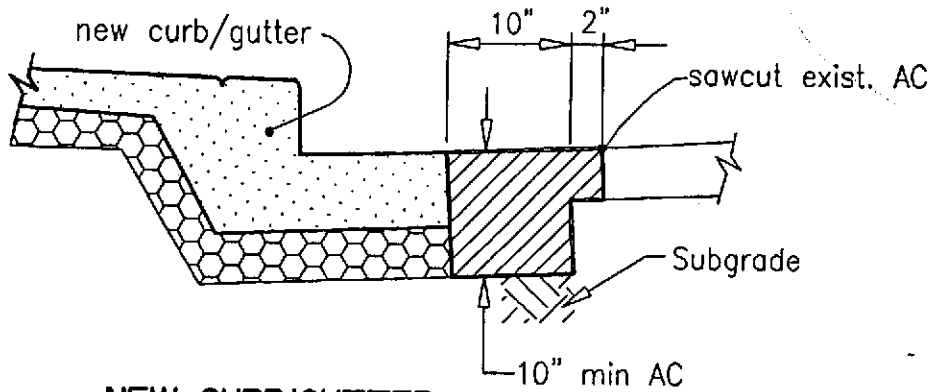
Place 12" #4 bars @ 3' O.C. for entire length as shown



**DETAIL "A"  
(KEYWAY)**



**DETAIL "B"  
(DOWELS)**



**NEW CURB/GUTTER  
AT EXISTING STREET**

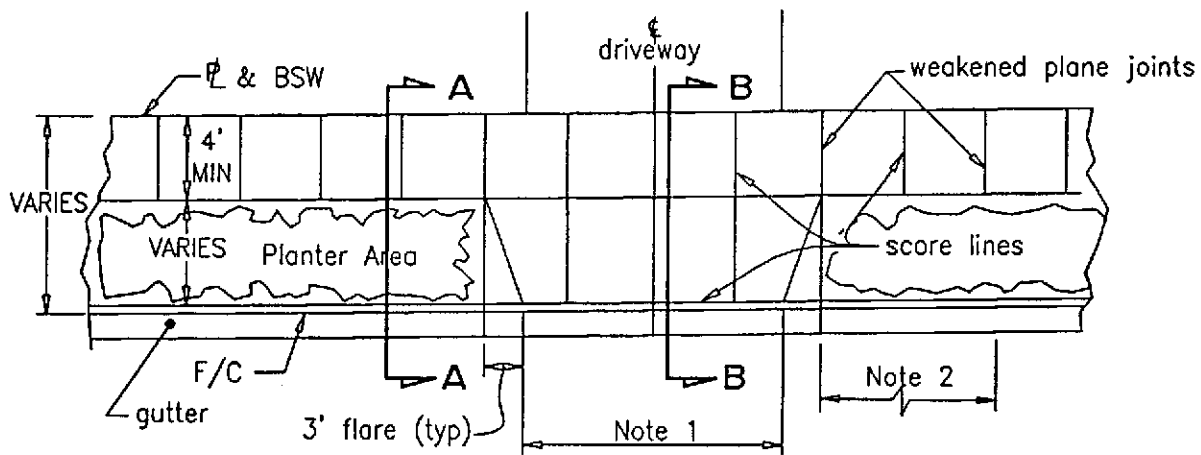
SEE ST 7 FOR MATERIALS / CONSTRUCTION REQUIREMENTS  
SEE ST 4 FOR JOINT CONSTRUCTION REQUIREMENTS

**CITY OF ALBANY  
ALAMEDA COUNTY, CALIFORNIA**

**VERTICAL CURB  
AND GUTTER**

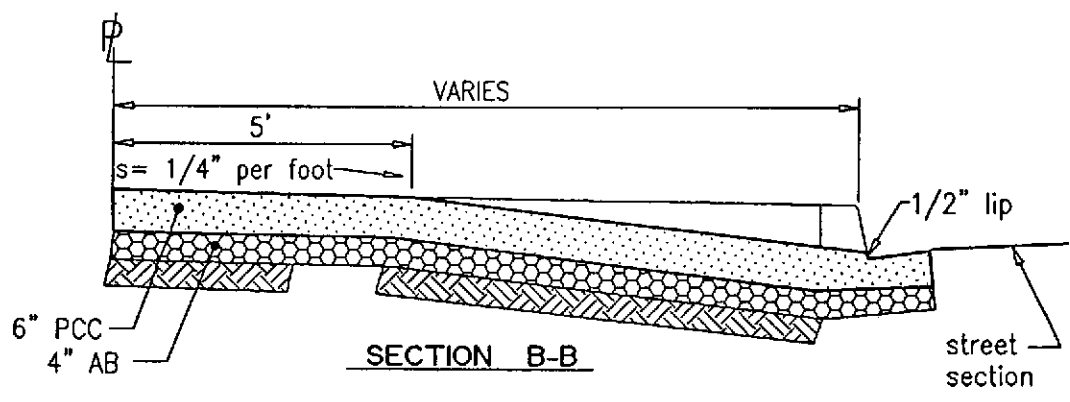
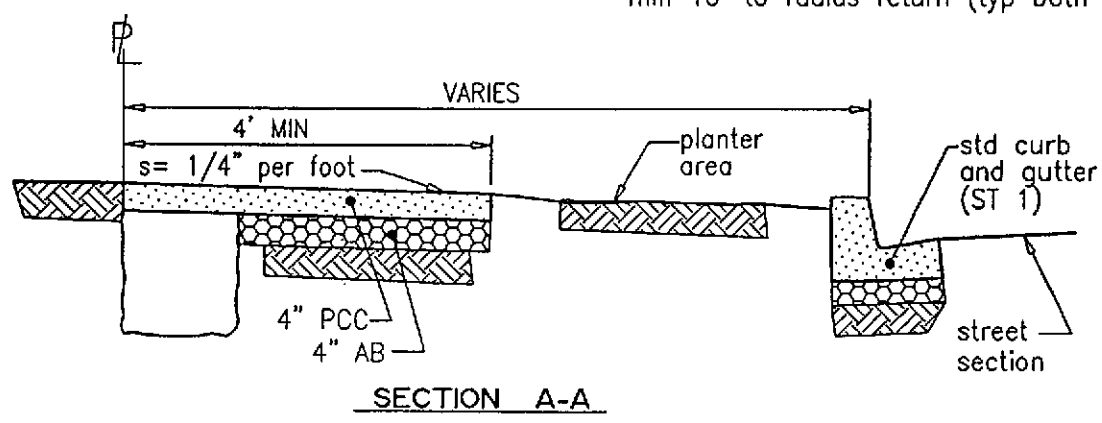
Approved: *Randall L. Kautz* Date: 7-21-00  
City Engineer R/E 29392 (Exp. 3-31-03)

**ST 1**



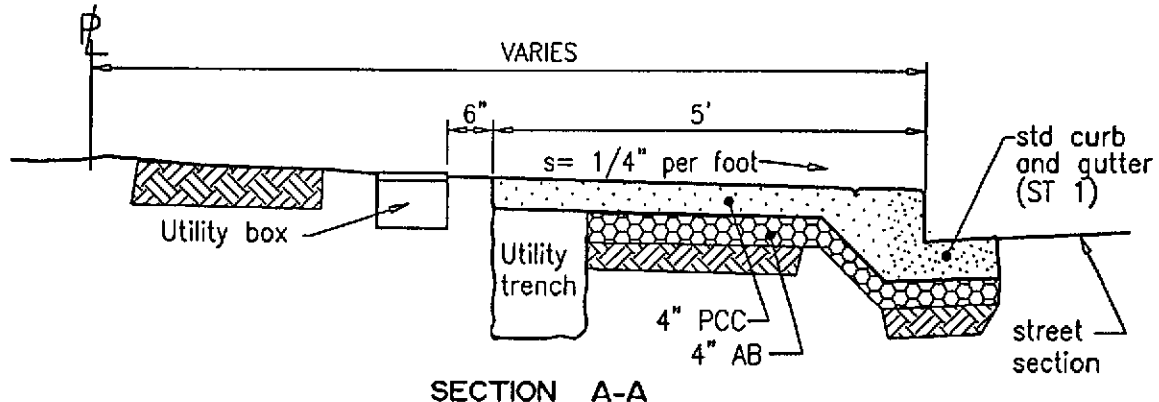
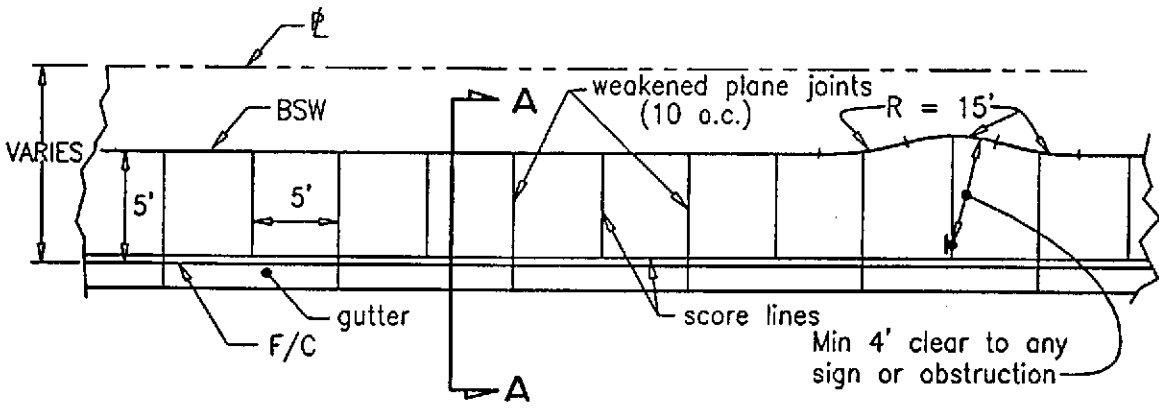
**NOTES:**

1. Driveway entrance to be 6" wider than driveway (symetric about centerline)
2. 3' min. dist. from edge of driveway to ℄, street light, fire hydrant, or other D/W; min 10' to radius return (typ both sides)



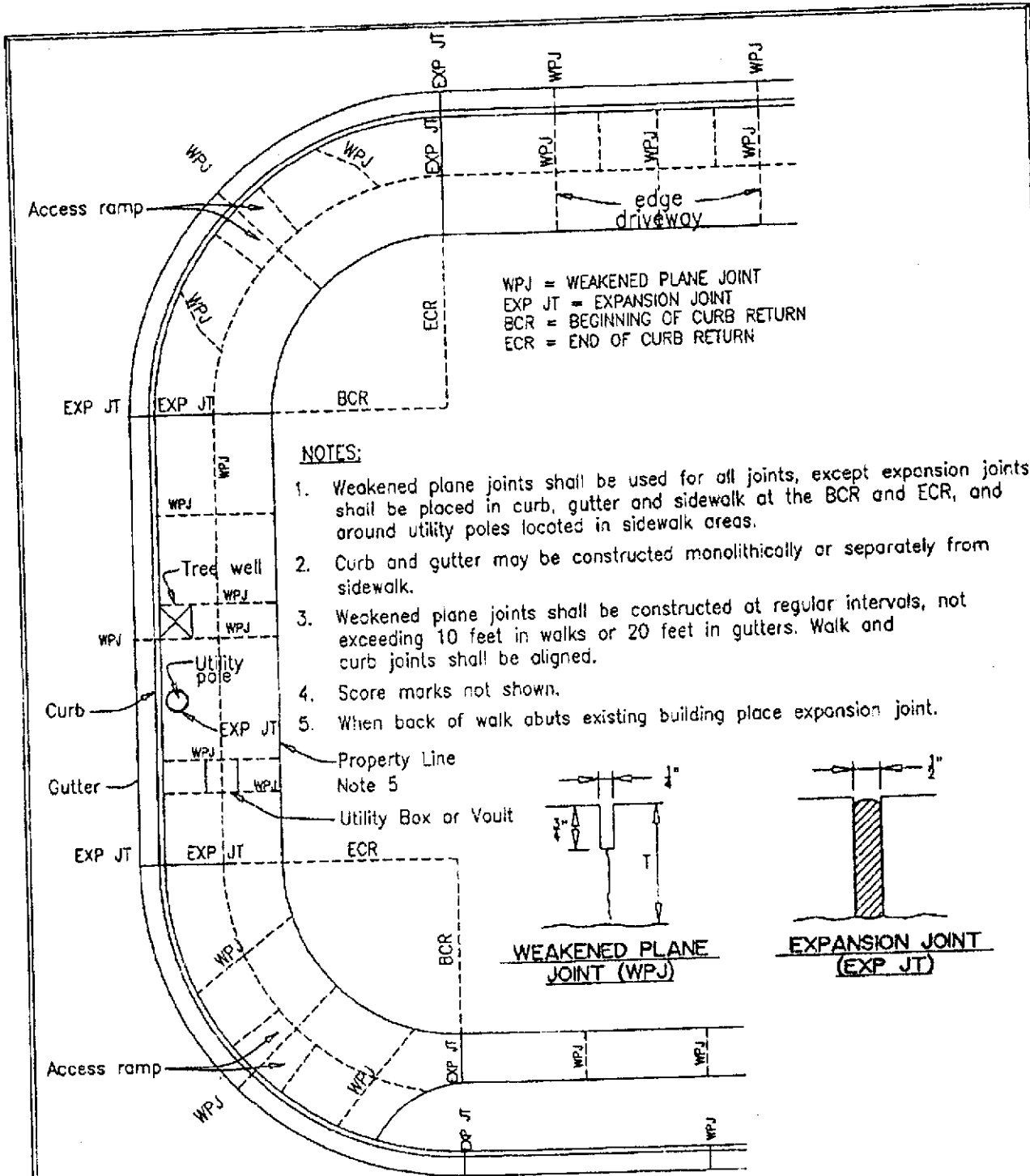
SEE ST 7 FOR MATERIALS / CONSTRUCTION REQUIREMENTS  
 SEE ST 4 FOR JOINT CONSTRUCTION REQUIREMENTS

<b>CITY OF ALBANY</b> ALAMEDA COUNTY, CALIFORNIA	
<b>SIDEWALK / DRIVEWAY</b> <b>(SEPARATED)</b>	
Approved: <i>[Signature]</i> City Engineer	Date: <i>7-21-00</i> (RCE 20392 (Exp. 3-31-03))
<b>ST 2</b>	



SEE ST 7 FOR MATERIALS / CONSTRUCTION REQUIREMENTS  
 SEE ST 4 FOR JOINT CONSTRUCTION REQUIREMENTS

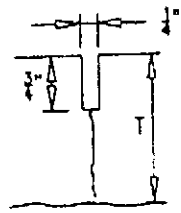
<b>CITY OF ALBANY</b> <b>ALAMEDA COUNTY, CALIFORNIA</b>	
<b>SIDEWALK</b> <b>(MONOLITHIC)</b>	
Approved: <i>[Signature]</i> City Engineer	Date: 7-21-00 RCE 23302 (Exp. 3-31-03)
<b>ST 3</b>	



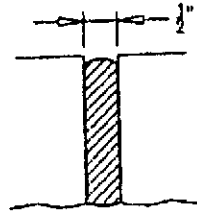
WPJ = WEAKENED PLANE JOINT  
 EXP JT = EXPANSION JOINT  
 BCR = BEGINNING OF CURB RETURN  
 ECR = END OF CURB RETURN

**NOTES:**

1. Weakened plane joints shall be used for all joints, except expansion joints shall be placed in curb, gutter and sidewalk at the BCR and ECR, and around utility poles located in sidewalk areas.
2. Curb and gutter may be constructed monolithically or separately from sidewalk.
3. Weakened plane joints shall be constructed at regular intervals, not exceeding 10 feet in walks or 20 feet in gutters. Walk and curb joints shall be aligned.
4. Score marks not shown.
5. When back of walk abuts existing building place expansion joint.



**WEAKENED PLANE JOINT (WPJ)**



**EXPANSION JOINT (EXP JT)**

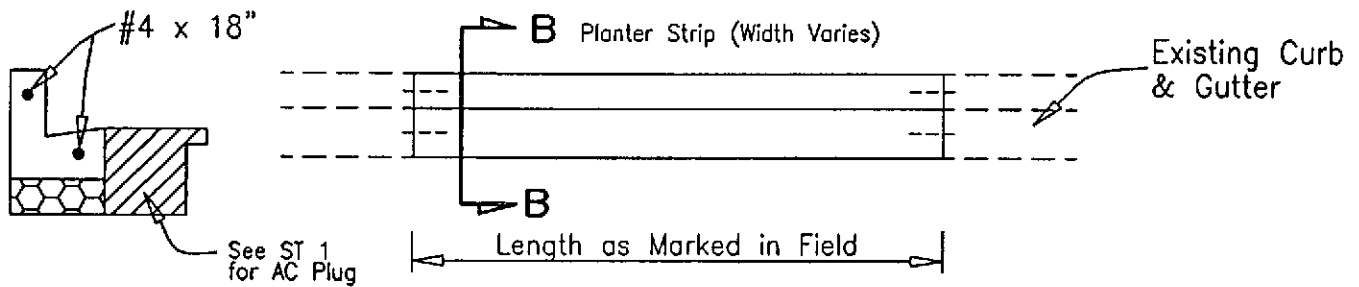
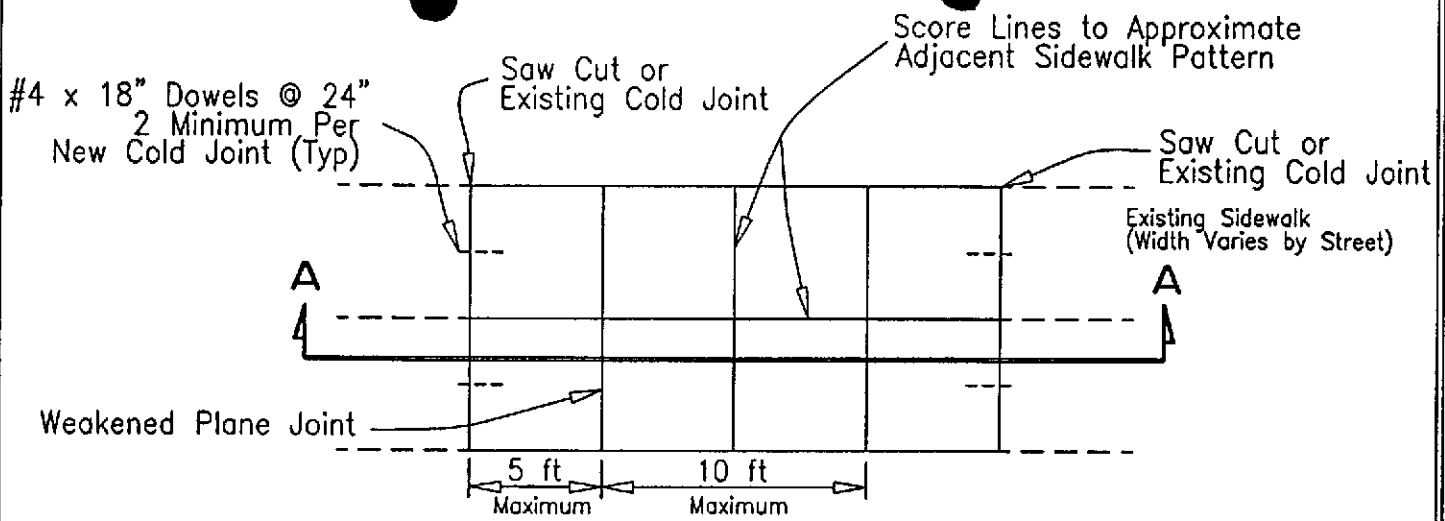
**CITY OF ALBANY**  
**ALAMEDA COUNTY, CALIFORNIA**

**CURB AND SIDEWALK JOINTS**

Approval: *Joseph W. Ledwith* Date: 7-21-00  
 City Engineer B/C 22392 (Exp. 3-31-03)

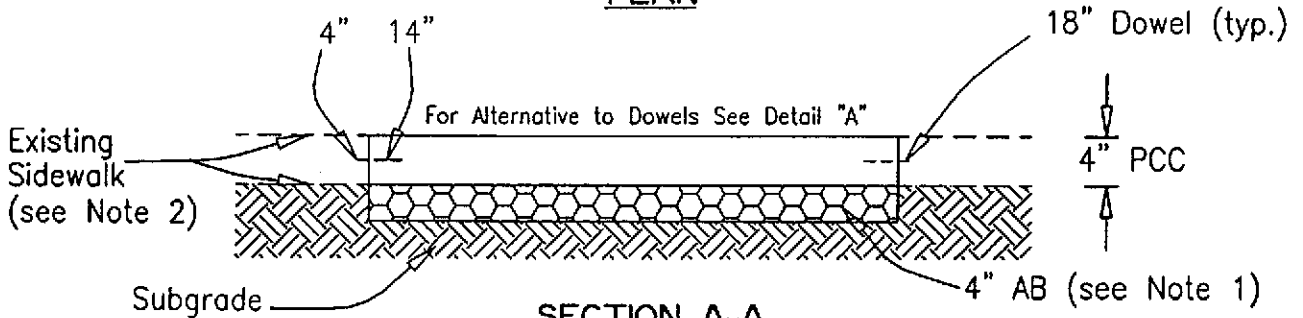
**ST 4**





**SECTION B-B**

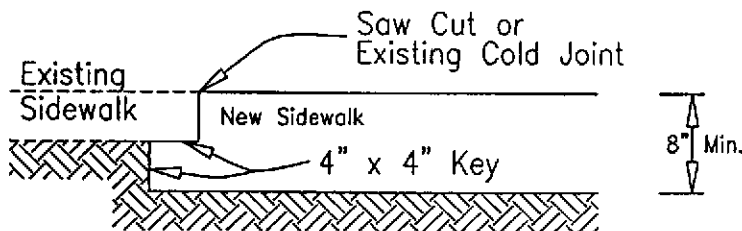
**PLAN**



**SECTION A-A**

**Notes:**

1. When tree roots are within 8" of finished grade, delete 4" AB and place 6" x 6" x 10 ga wire mesh in concrete.
2. When existing sidewalk is less than 4" thick, Detail A may be substituted for dowels.



**DETAIL "A"**

Alternative Key Detail

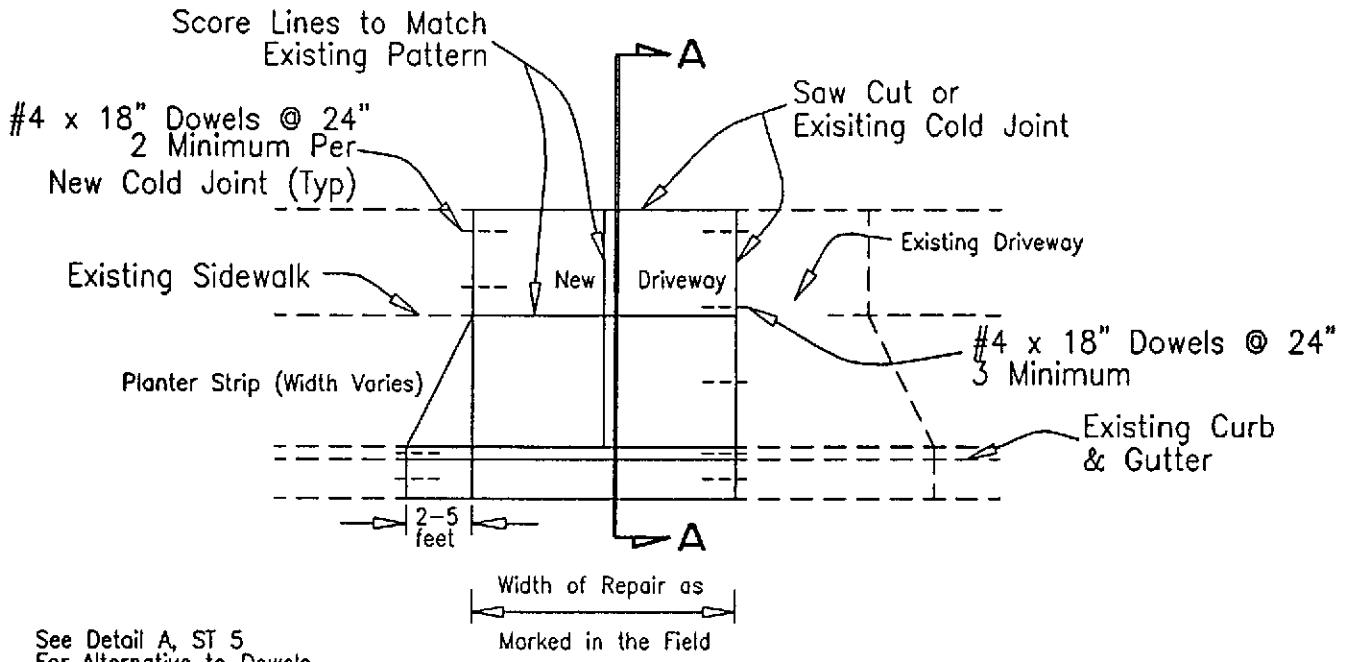
SEE ST 7 FOR MATERIALS / CONSTRUCTION REQUIREMENTS  
SEE ST 4 FOR JOINT CONSTRUCTION REQUIREMENTS

**CITY OF ALBANY**  
**ALAMEDA COUNTY, CALIFORNIA**

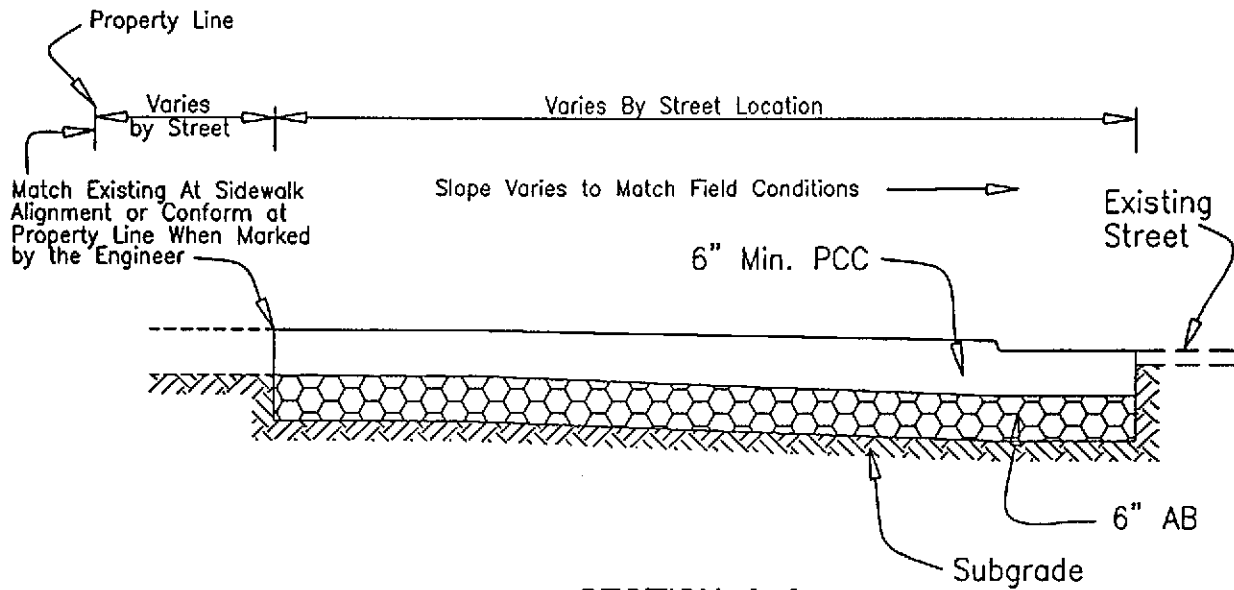
**CURB, GUTTER & SIDEWALK REPAIRS**

Approved: *Randolph K. Rubin* Date: 7-21-00  
City Engineer ECE 29392 (Exp. 3-31-03)

**ST 5**



**PLAN**

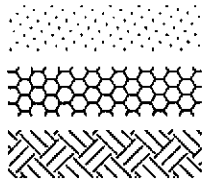


**SECTION A-A**

SEE ST 7 FOR MATERIALS / CONSTRUCTION REQUIREMENTS  
SEE ST 4 FOR JOINT CONSTRUCTION REQUIREMENTS

<b>CITY OF ALBANY</b> <b>ALAMEDA COUNTY, CALIFORNIA</b>	
<b>DRIVEWAY REPAIRS</b>	
Approved: <i>[Signature]</i> City Engineer	Date: 7-21-00 CE 29392 (Exp. 3-31-03)
<b>ST 6</b>	

# LEGEND



- =concrete
- =aggregate base
- =subgrade/exist. grade

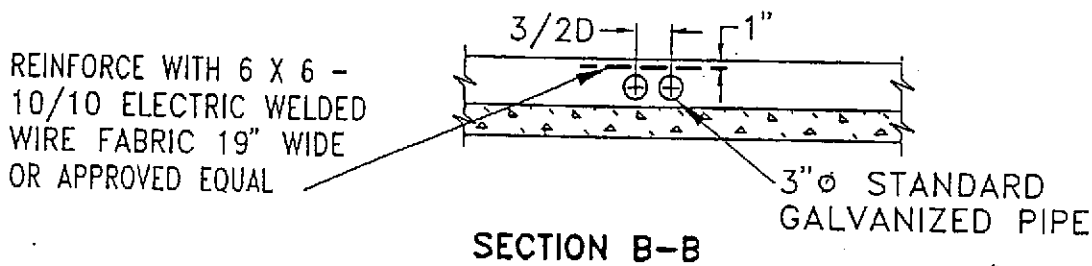
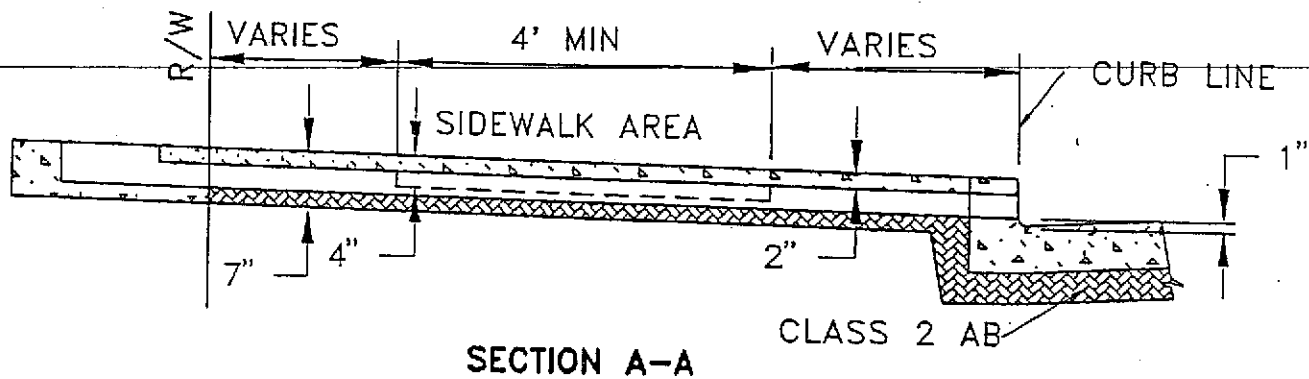
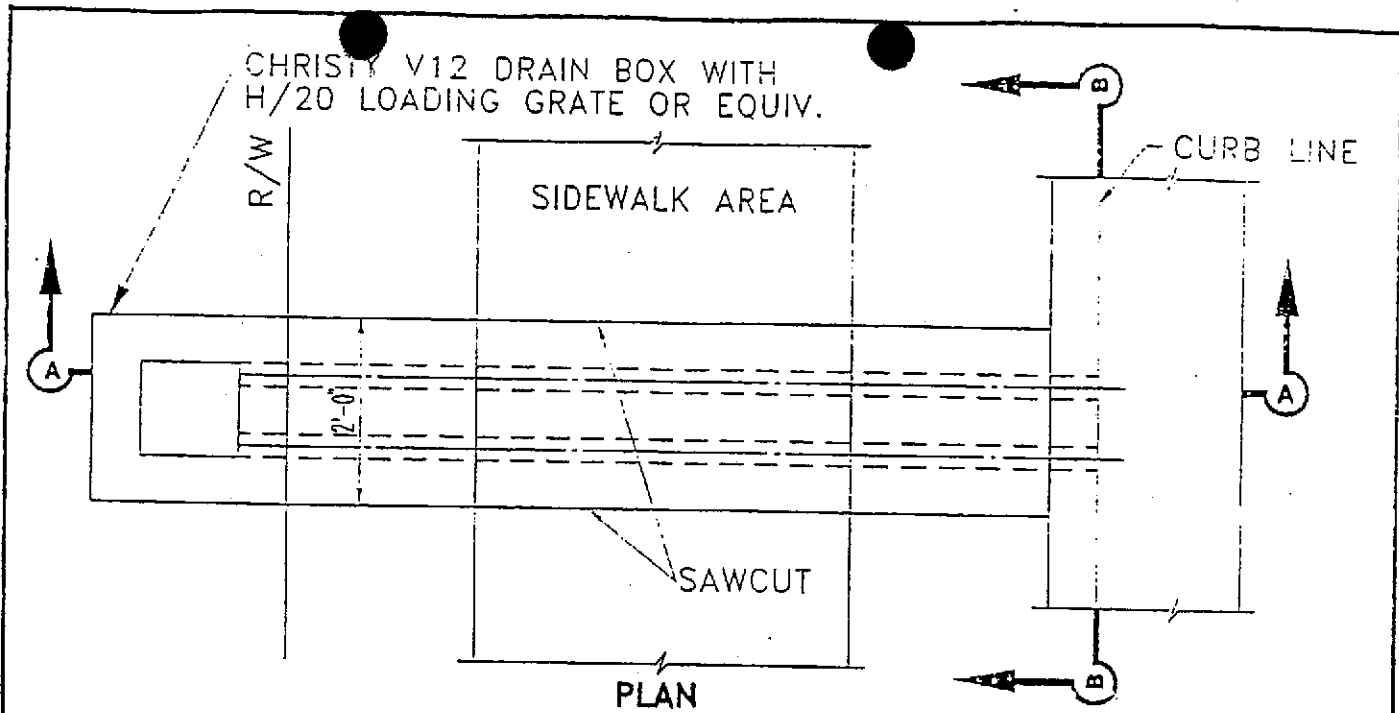
1. Subgrade shall be native material, 6" deep, compacted to 90% Relative Compaction (R.C.)
2. Cushion material shall be Class 2 aggregate base, per Caltrans Standard Specifications, Section 26; compacted to 95% R.C.
3. Concrete shall be 520-C-2500, 4" Maximum Slump.
4. Curb, gutter and sidewalk to be placed monolithically where possible. Where non-monolithic, place dowels and/or keyway per ST 1.
5. Place 1/2" expansion joint at 200' spacings and at returns.
6. Place 3/4" deep weakened plane joint at 20' maximum spacings through curb and gutter, and 10' maximum spacings through sidewalk, driveway and at edges of driveways and at 1/2 width for sidewalks and driveways over 10 feet in width.
7. Place score lines at 5' spacing between weakened plane joints and along back of curb.
8. Place no. 4 reinforcing steel bars at 18 inches each way in industrial, commercial and street level driveways.
9. Concrete to have a soft broom finish. Clear curing compound to be applied per manufacturer's specifications.
10. When replacing curb, gutter, sidewalk, and driveway, match existing width and scoring. Sawcuts shall be at joints or score lines. Insert no. 4 by 18" long steel dowels at 24" on center (2 minimum for curb and gutter). Add 1 lb. lampblack per cubic yard.
11. Stamp 3" high letters - "W"(water) and "S"(sewer) in face of curb to locate laterals.
12. Sawcut existing A.C. pavement with power saw.
13. Asphalt Concrete shall be 1/2" Max Aggregate Type A per Caltrans Sec. 39, 3" Maximum Lifts.

**CITY OF ALBANY**  
**ALAMEDA COUNTY, CALIFORNIA**

**NOTES - SIDEWALKS, DRIVEWAYS,  
AND CURB & GUTTER**

Approved: *Paul Phillip* Date: *7-21-00*  
City Engineer RCJ 29392 (Exp. 3-31-03)

**ST 7**



COUNTY OF ALAMEDA ★ PUBLIC WORKS AGENCY

SIDEWALK DRAIN  
TYPE II  
SINGLE FAMILY  
RESIDENTIAL LOTS

APPROVAL REC.  
*[Signature]*  
APPROVED

APPROVED

*[Signature]*  
CMM

COUNTY ENGINEER

REVISIONS

DRAWN

JC

CHECKED

DATE

OCT. 1994

SCALE

NONE

FILE NO.

SD-527

1 of 1