

BOSTER STREET

E

30'-0"

P.L. 97.88'

CONCRETE
SIDEWALK

CONC. APPROACH

P.L. 52.79 N 11° 51' 15" E

WOOD
FENCE
P.L. 35.67' N 74° 08' 15" W

AIR & WATER
CONSOLE

VENT RISERS

400 WATT METAL
HALIDE SURFACE
MTD. FIXTURES

32'-0" x 40'-0" TYPE 140
CANOPY WITH REDWOOD
FASCIA

TELEPHONE
BOOTH

AIR AND
WATER LINES

FILL
FUTURE CLUGE
TRUCK V.R.

A.C.
PAVING

12,000 GALLON
SUPER UNL. 92

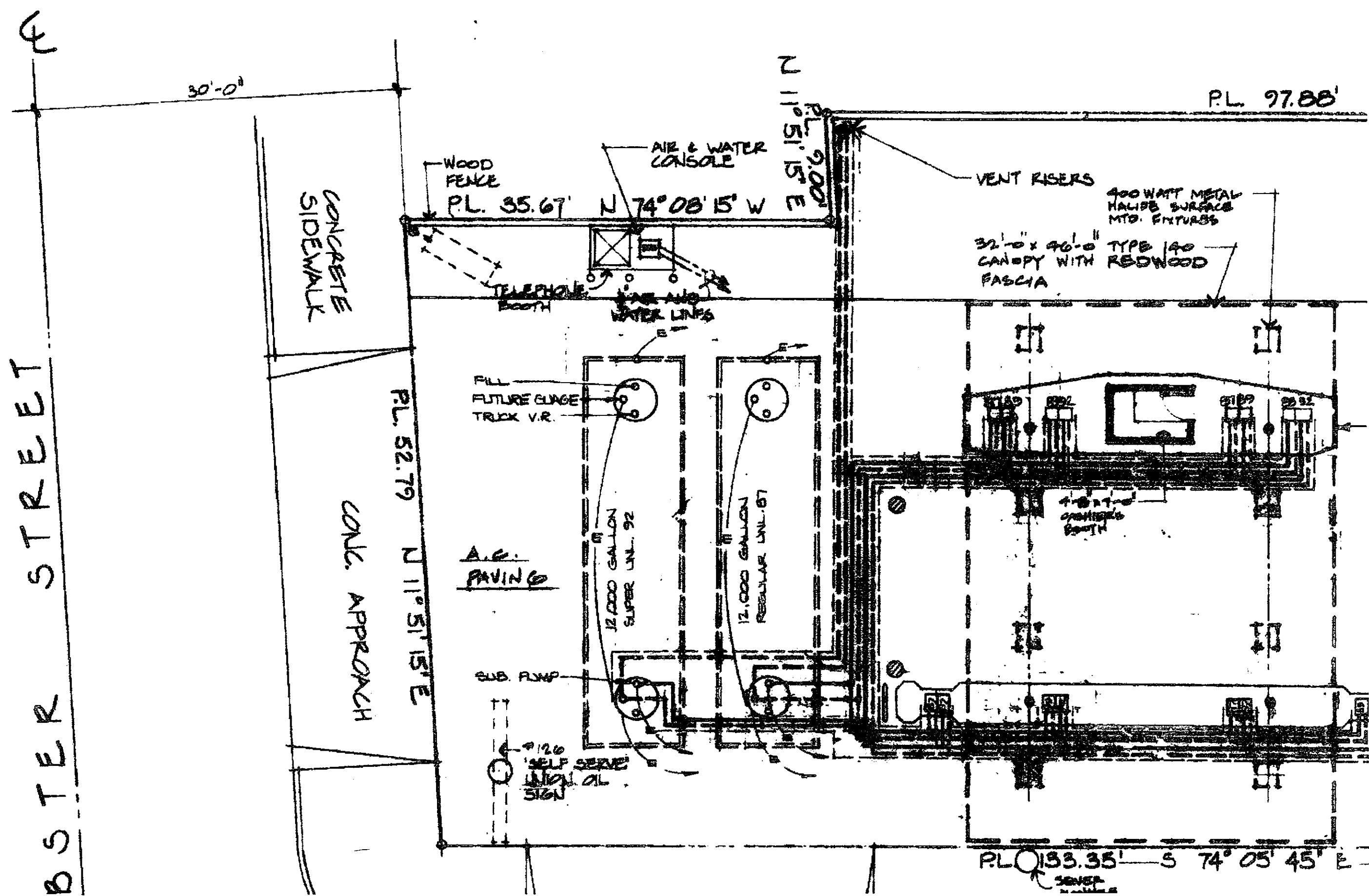
12,000 GALLON
REGULAR UNL. 87

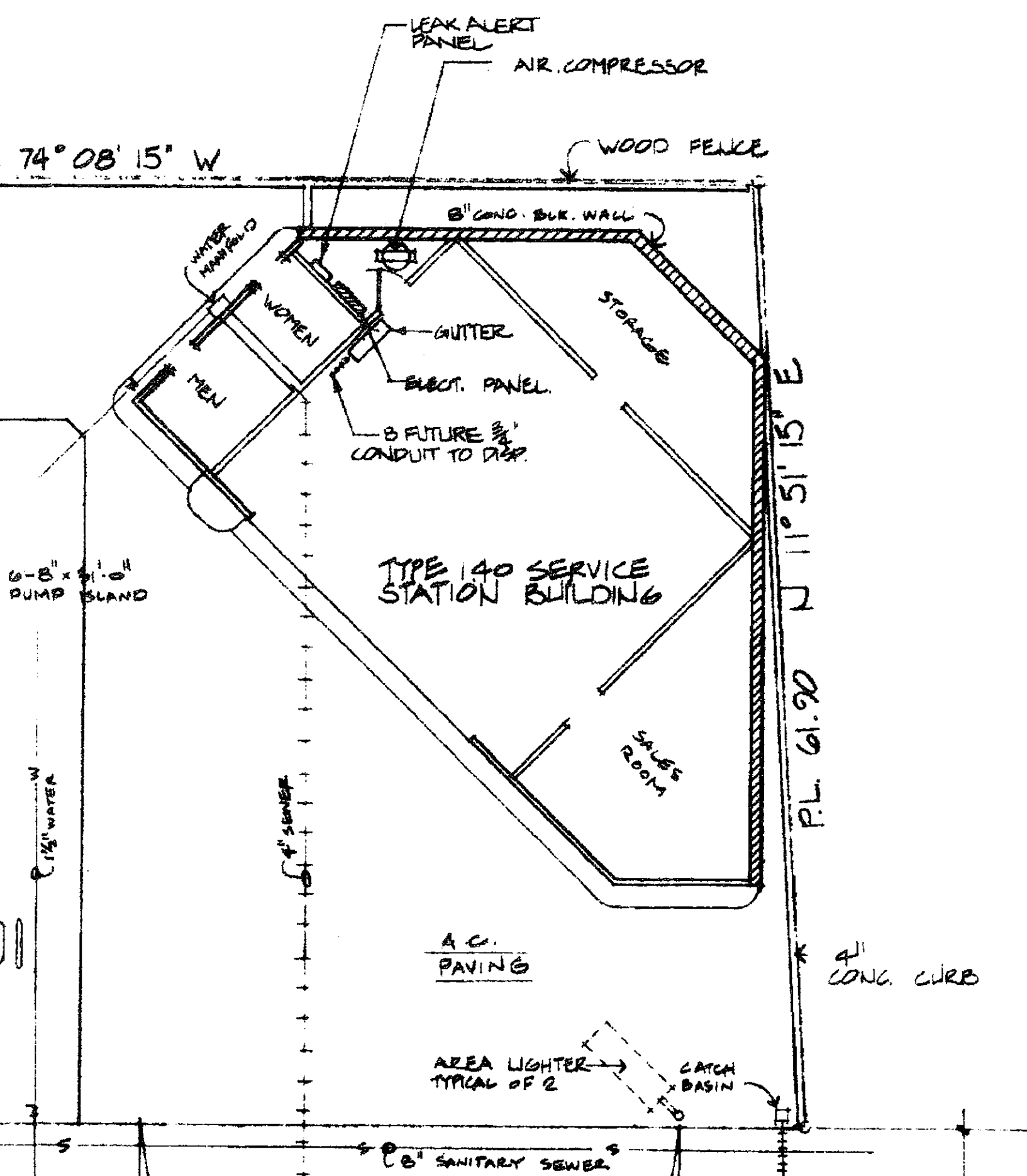
4'-0" x 4'-0"
CASHIER'S
BOOTH

SUB. PUMP

4'-0" x 6'-0"
SELF SERVE
UNL. OIL
SIGN

P.L. 133.35' S 74° 05' 45" E
SEWER
MANHOLE





DEMOLITION NOTES

1. REMOVE (E) TANK SLAB, DRIVE SLAB, UNDERGROUND TANKS, UNDERGROUND LINES, VENT LINES, RISERS, AND DISPENSERS.
2. REMOVE EXISTING PUMP ISLANDS, LIGHT POLES, SIGN POLES, AND ALL OTHER ABOVEGROUND IMPROVEMENTS. (E) SERVICE STATION BUILDING AND CANOPY TO REMAIN.
3. BACKFILL ALL EXCAVATED AREAS WITH ENGINEERED BACKFILL MATERIAL COMPACTED TO 90% PER TOSCO SPECIFICATIONS.
4. PATCH BACK ALL AREA DISTURBED BY CONSTRUCTION WITH 3" ASPHALT OVER 6" OF BASE ROCK PER TOSCO SPECIFICATION.

GRAPHIC SCALE



PROPERTY OWNED BY UNION OIL COMPANY
 BOUNDED THUS: _____

WE

CONCRETE
SIDEWALK

ELECT.
M.A. →

CONC. APPROACH

CONC. SIDEWALK

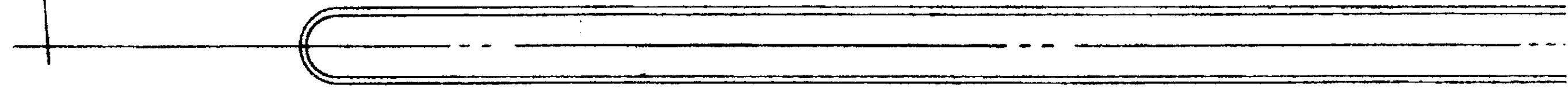
WATER
METER

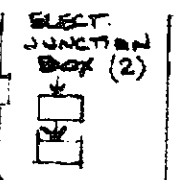
4" C.I. WATER

W

W

MAC ARTHUR BOL





CONC. APPROACH

CONCRETE SIDEWALK

COMPLETION DATE: NOVEMBER 3, 1978
TANK REPLACEMENT AS-BUILT 11/21/89

55'-0"

LEVAR D

APPROVED
DEPARTMENT OF ENVIRONMENTAL HEALTH
BY: *[Signature]*
DATE: 12-18-97

| | | |
|--------|--|----|
| 6-7-90 | TANK REPL./DEP. UPGRADE BY PARADISO, J. B. | BM |
| DATE | REVISION | BY |

PIPING LEGEND

- — VR — — VAPOR RETURN PIPING
- - - V - - - VENT PIPING
- — S — — SUPER FUEL PIPING
- — UL — — UNLEADED FUEL PIPING

GENERAL ARRANGEMENT
UNION OIL SERVICE STATION #3538
MAC ARTHUR BLVD. & WEBSTER ST.
OAKLAND, CALIFORNIA

PLT 1/8" = 1'-0"
RHC 3-2-78

1.1