



3330 Cameron Park Drive, Ste 550
Cameron Park, California 95682
(530) 676-6004 ~ Fax: (530) 676-6005

September 30, 2005
Project No. 2007-0057-01

Mr. Barney Chan
Alameda County Health Care Services Agency
1131 Harbor Bay Parkway, Suite 250
Alameda, California 94502-6577

Re: Extraction Well Installation at Former USA Service Station No. 57, located at
10700 MacArthur Boulevard Oakland, California

Dear Mr. Chan:

Stratus Environmental, Inc. (Stratus), on behalf of USA Gasoline Corporation (USA), will be overseeing environmental drilling and well installation activities at 10700 MacArthur Boulevard, Oakland, California (the site). Four extraction wells will be installed in areas of the site where subsurface petroleum hydrocarbon impact has been previously identified. The work is tentatively scheduled to be completed on October 6 and 7, 2005. Woodward Drilling Company of Rio Vista, a California licensed well driller, is scheduled to complete the work. The work has been approved by Alameda County Health Care Services Agency, and well permits have been secured from Alameda County Public Works Agency.

If you have any questions or concerns, please contact Gowri Kowtha at (530) 676-6001.

Sincerely,

STRATUS ENVIRONMENTAL, INC.

A handwritten signature in black ink, appearing to read "Gowri S. Kowtha", written over a white background.

Gowri S. Kowtha, P.E.
Project Manager

cc: Mr. Charles Miller, USA Gasoline Corporation
Mr. Ken Phares, Jay-Phares Corporation
Mr. Peter McIntyre, AEI Consultants

Alameda County
OCT 04 2005
Environmental Health



3330 Cameron Park Drive, Ste 550
Cameron Park, California 95682
(530) 676-6004 ~ Fax: (530) 676-6005

October 12, 2005
Project No. 2007-0057-01

Mr. Barney Chan
Alameda County Health Care Services Agency
1131 Harbor Bay Parkway, Suite 250
Alameda, California 94502-6577

Alameda County
OCT 17 2005
Environmental Health

Re: In-situ Groundwater Remediation and
Dual Phase Extraction Implementation Schedule
Former USA Service Station No. 57
10700 MacArthur Boulevard
Oakland, California

Dear Mr. Chan:

Stratus Environmental, Inc. (Stratus) has prepared this letter, on behalf of USA Gasoline Corporation (USA), to present an implementation schedule for the in-situ groundwater remediation system and additional dual phase extraction (DPE) events to be conducted at Former USA Service Station No. 57, located at 10700 MacArthur Boulevard, Oakland, California (see Figure 1).

In August 2005, Stratus prepared and submitted to Alameda County Health Care Services Agency (ACHCSA) a *Work Plan for Well Installation and In-Situ Groundwater Remediation*, proposing installation of additional extraction wells (see Figure 2) with the screening interval extending from the vadose zone to the saturated zone. In addition, the work plan also proposed installation of an in-situ groundwater treatment system to augment the on-going batch (quarterly) DPE events, in order to reduce the petroleum hydrocarbon concentrations in groundwater to achieve the water quality objectives. The work plan was subsequently approved by ACHCSA in a letter dated September 9, 2005.

To implement the above summarized work plan, the proposed scope of work has been divided into two categories: well installation activities and installation of the in-situ remediation system. A schematic illustration of the schedule for tasks associated with implementation of the work plan is presented in Figure 3. The major tasks associated with the well installation activities are procuring well installation permits, retaining a drilling contractor, overseeing well installation, and reporting. Well installation permits were obtained on September 27, 2005, and Stratus oversaw the installation of extraction wells on October 7 and 8, 2005. Soil samples were collected during the advancement of soil borings and were forwarded to a California state certified laboratory for chemical

analysis. The soil samples will be analyzed for total petroleum hydrocarbons as gasoline (TPHG) using USEPA Method 8015 DHS LUFT, and for benzene, toluene, ethyl benzene, and xylenes (BTEX), methyl tertiary butyl ether (MTBE), tertiary butyl alcohol (TBA), 1,2-dichloroethane (1,2-DCA), di-isopropyl ether (DIPE), tertiary amyl methyl ether (TAME), and ethyl tertiary butyl ether (ETBE) using USEPA Method 8260. Upon receipt of all of the analytical results, Stratus will prepare and submit a well installation report by December 7, 2005, documenting the findings of the extraction well installation activities.

The major tasks associated with the installation of the iSOC™ system are developing design drawings and construction specifications for procuring a building permit, and fieldwork to complete the installation activities. Stratus has contacted (on September 21, 2005) the Building and Fire Departments at the City of Oakland to identify the design drawing submission requirements for in-situ remediation systems. Stratus has initiated development of design drawings to procure the required building/fire department permits and also to facilitate system installation.

DPE SCHEDULE AND STRATEGY

The fourth one-month long DPE event is currently scheduled to begin on November 14, 2005. During this fourth DPE event, a short term DPE test will be conducted on each of the newly installed extraction wells (EX-1 through EX-4), for approximately 2 hours each, to evaluate the petroleum hydrocarbon concentrations in the vicinity of these wells. Subsequent to completion of the individual well tests, DPE using a combination of all four of the newly installed extraction wells will be initiated. Influent air and water samples will be collected periodically during the DPE event and forwarded to the laboratory to be analyzed for TPHG, BTEX, and MTBE. The water samples will be additionally analyzed for TBA, DIPE, 1,2-DCA, ETBE, and TAME. Within 45-days of receipt of all analytical data, Stratus will prepare and submit a report documenting the findings of the DPE event. Permits from Bay Area Air Quality Management District (BAAQMD) required for the operation of DPE system, and a sewer discharge permit from East Bay Municipal District (EBMUD), have already been procured during the previous DPE events.

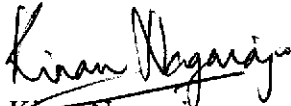
Mr. Barney Chan, ACHCSA
In-situ Groundwater Remediation & DPE Implementation Schedule
Former USA 57, Oakland, California
Page 3

October 12, 2005
Project No. 2007-0057-01

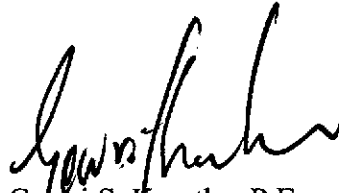
Please contact Gowri Kowtha at (530) 676-6001 if you have any questions or need any other additional information regarding this implementation schedule.

Sincerely,

STRATUS ENVIRONMENTAL, INC.



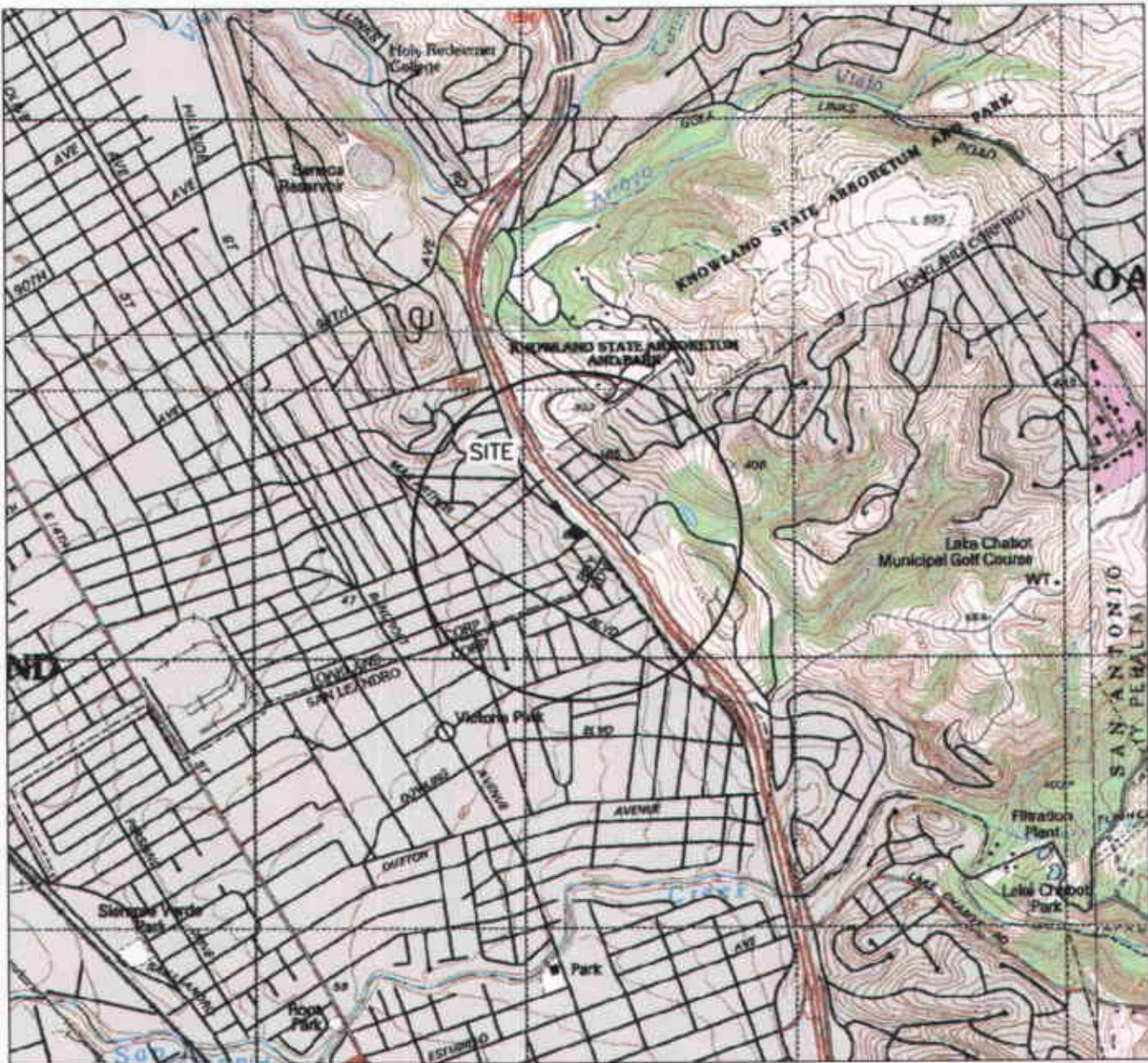
Kiran Nagaraju
Staff Engineer



Gowri S. Kowtha, P.E.
Project Manager

Attachments: Figure 1 Site Location Map
 Figure 2 Site Plan
 Figure 3 Implementation Schedule

cc: Mr. Charles Miller, USA Gasoline Corporation
 Mr. Ken Phares, Jay-Phares Corporation
 Mr. Peter McIntyre, AEI Consultants



GENERAL NOTES:
 BASE MAP FROM U.S.G.S.
 OAKLAND, CA
 7.5 MINUTE TOPOGRAPHIC
 PHOTOREVISED 1980



QUADRANGLE LOCATION



SCALE 1:24,000

STRATUS
 ENVIRONMENTAL, INC.

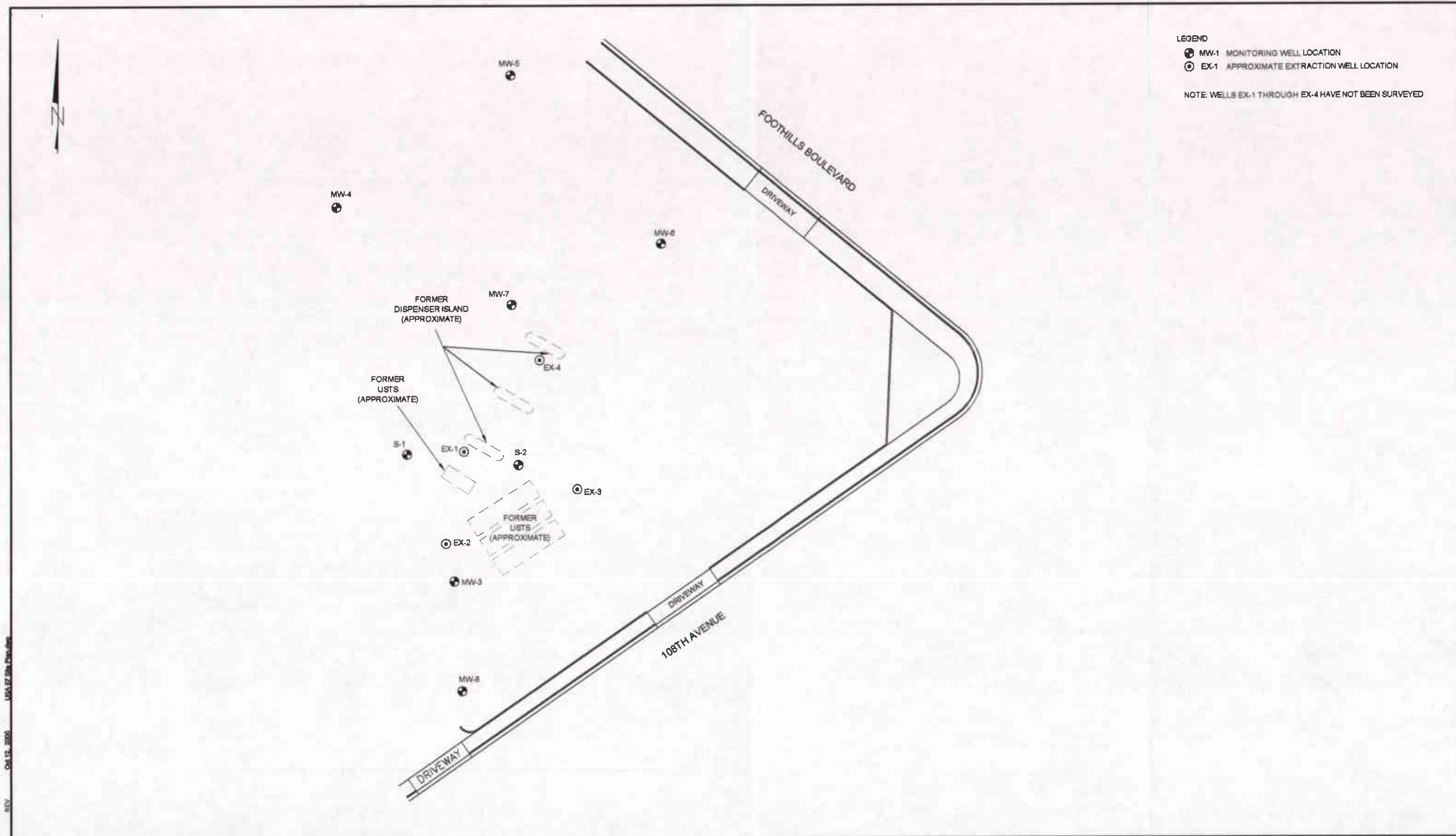
FORMER USA SERVICE STATION NO. 57
 10700 MACARTHUR BOULEVARD
 OAKLAND, CALIFORNIA
 SITE LOCATION MAP

FIGURE
1
 PROJECT NO.
 2007-0057-01

LEGEND

- MW-1 MONITORING WELL LOCATION
- ⊙ EX-1 APPROXIMATE EXTRACTION WELL LOCATION

NOTE: WELLS EX-1 THROUGH EX-4 HAVE NOT BEEN SURVEYED



USA 07 28a Plan.dwg
08/12/2005
01:57
1/01

STRATUS
ENVIRONMENTAL, INC.



FORMER USA STATION NO. 57
10700 MACARTHUR BOULEVARD
OAKLAND, CALIFORNIA

SITE PLAN

FIGURE
2
PROJECT NO.
2007-0057-01

Figure 3
 Former USA Service Station No. 57
 10700 MacArthur Boulevard
 Oakland, California
 Implementation Schedule



Project: USA 57 Project Schedule
 Date: Wed 10/12/05

Task		Split		Milestone		Project Summary		External Milestone	
Project Guide: Critical Task		Progress		Summary		External Tasks		Deadline	