



**RECEIVED**

1:13 pm, Sep 05, 2007

**Alameda County  
Environmental Health**

3330 Cameron Park Drive, Ste 550  
Cameron Park, California 95682  
**(530) 676-6004** ~ Fax: (530) 676-6005

August 28, 2007  
Project No. 2007-0057-01

Mr. Robert E. Cave  
Bay Area Air Quality Management District  
939 Ellis Street  
San Francisco, California 94109

Re: Two Month Dual Phase Extraction Event Notification  
(BAAQMD Application No. 12773 & Plant No. 17101)  
Former USA Station No. 57  
10700 MacArthur Boulevard  
Oakland, California

Dear Mr. Cave:

Stratus Environmental Inc. (Stratus) has prepared this letter, on behalf of CBA Equipment, LLC (CBA), to notify Bay Area Air Quality Management District (BAAQMD) regarding the use of a BAAQMD permitted (Application Number 12773 and Plant Number 17101, CBA-owned, Solleco 200 cubic feet per minute (cfm) Dual Phase Extraction (DPE) System at former USA Gasoline (USA) Station No. 57, located at 10700 MacArthur Boulevard, Oakland, California (see Figure 1). The DPE event will be completed in order to remove petroleum hydrocarbon impacted soil vapors and groundwater from the subsurface. The two-month DPE event is scheduled to begin on September 4, 2007, and will be operated 24 hours a day.

During the proposed 60-day DPE event, petroleum hydrocarbon laden soil vapors will be extracted from existing extraction wells EX-1 through EX-4 (see Figure 2) using the 15-horsepower (hp) rated liquid ring blower of a CBA 200 cfm thermal oxidizer. The extracted soil vapors will be abated in the thermal oxidizer before discharging into the atmosphere. A 25 kilowatt (30-hp) propane generator, or similar, will be used to be energize the control panel of the DPE system. Extracted groundwater will be treated using granular activated carbon vessels prior to discharging to the sanitary sewer under permit (no. 50546352, dated May 31, 2005) from East Bay Municipal Utility District (EBMUD).

Stratus conducted a web search ([www.yahoo.com](http://www.yahoo.com)) to locate schools within a 1,000-foot radius of the site, and none were identified in the search area.

## **DPE SYSTEM START-UP AND OPERATION**

Stratus will conduct routine site visits during the 2-month period to verify system operation, optimize system performance, and conduct maintenance, if warranted. In addition, influent and effluent air samples will be collected on at least a monthly basis to verify compliance with BAAQMD permit requirements.

During the system start-up and subsequent site visits, the following parameters will be monitored and recorded on field data sheets:

- Influent, operating, and effluent temperatures,
- Vapor extraction rate,
- Applied vacuum at each vapor extraction well,
- Influent flow into the system, and
- Photo-ionization detector (PID) measurements for organic vapors from the extraction wells.

Air samples will be forwarded to a state certified laboratory to be analyzed for gasoline range organics (GRO) by United States Environmental Protection Agency (USEPA) Method 8015, and for benzene, toluene, ethylbenzene, and total xylenes (BTEX), and methyl tertiary butyl ether (MTBE) by USEPA Method 8020. Analytical results and field data collected will be used to calculate and verify the destruction efficiency of the system. The first set of influent and effluent air samples will be analyzed on a 24-hour turnaround time; the results will be forwarded to BAAQMD via facsimile. The remainder of the air samples will be analyzed on a standard turnaround time (2 to 3 weeks).

## **REPORTING**

Upon completion of the DPE event, and within 45-days of receipt of all analytical data, Stratus will prepare, and submit to BAAQMD, a DPE event summary report presenting the analytical results of the vapor samples, volume of air extracted and treated, tabulated field observations, and destruction efficiencies of the system.


Mr. Robert E. Cave, BAAQMD  
DPE Event Notification (Plant No. 17101)  
Former USA Facility No. 57  
Oakland, California  
Page 3

August 28, 2007  
2007-0057-01

If you have any questions, please contact Scott Bittinger at (530) 676-2062 or Kiran Nagaraju at (530) 676-6007.

Sincerely,

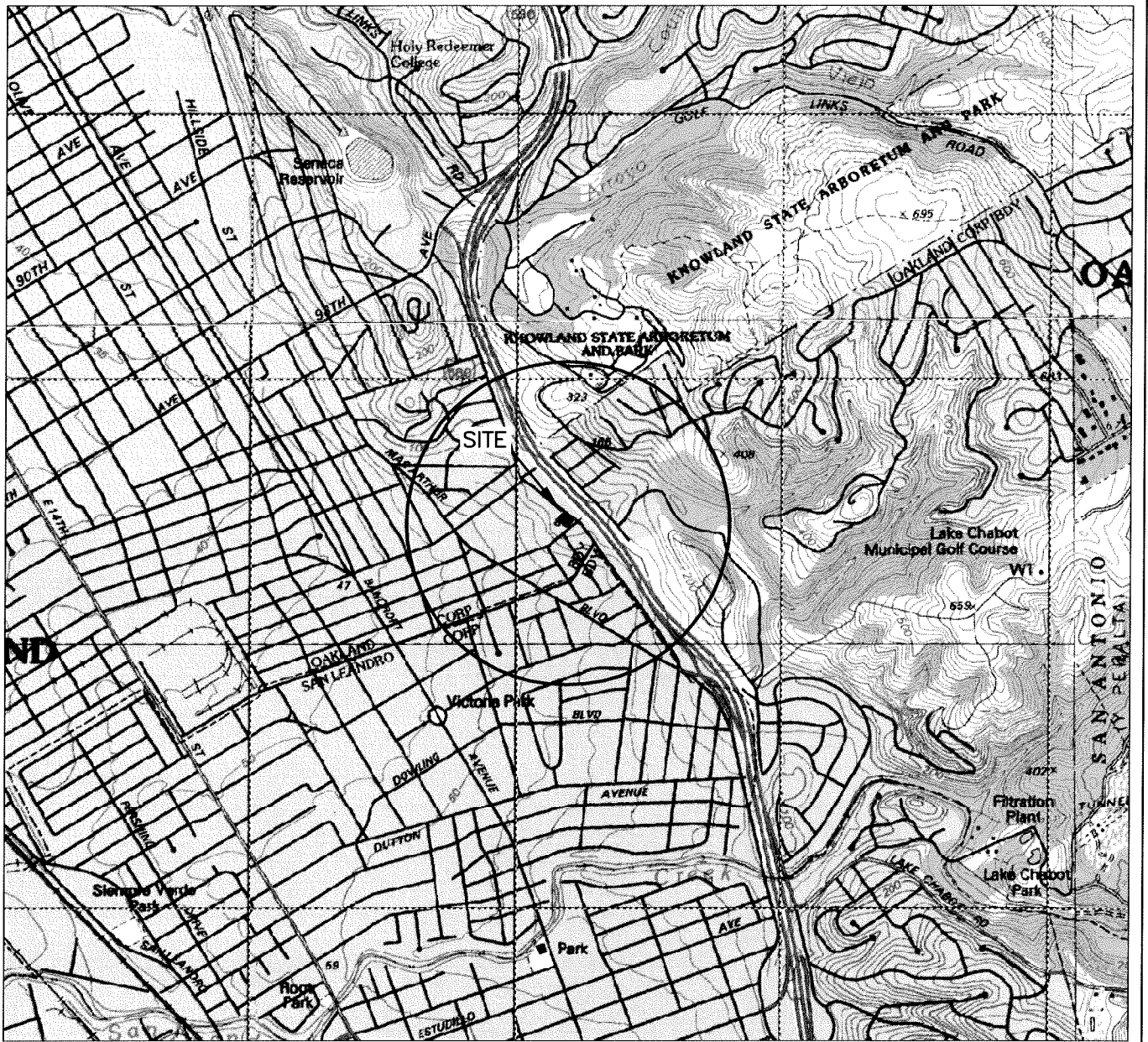
*STRATUS ENVIRONMENTAL, INC.*

  
Kiran Nagaraju  
Staff Engineer

  
Scott G. Bittinger, P.G.  
Project Manager

Attachments:    Figure 1    Site Location Map  
                      Figure 2    Site Plan

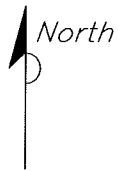
cc:    Mr. Charles Miller, Moller Investment Group, Inc.  
       Mr. Barney Chan, Alameda County Health Care Services  
       Mr. Ken Phares, Jay-Phares Corporation  
       Mr. Peter McIntyre, AEI Consultants  
       Ms. Mirtha NinaYahuar, East Bay Municipal Utility District



GENERAL NOTES:  
 BASE MAP FROM U.S.G.S.  
 OAKLAND, CA  
 7.5 MINUTE TOPOGRAPHIC  
 PHOTOREVISED 1980



QUADRANGLE LOCATION



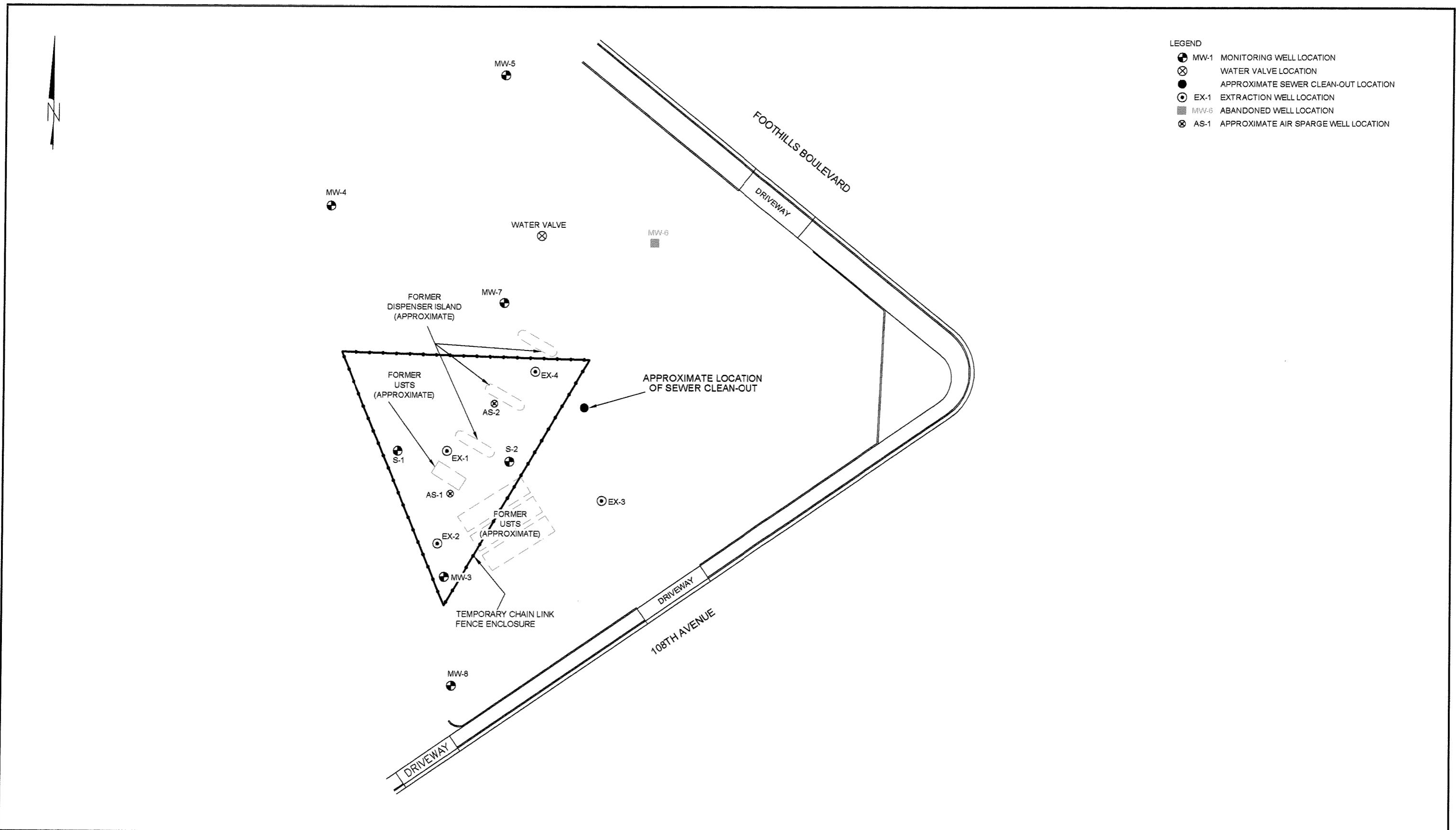
SCALE 1:24,000

**STRATUS**  
 ENVIRONMENTAL, INC.

FORMER USA SERVICE STATION NO. 57  
 10700 MACARTHUR BOULEVARD  
 OAKLAND, CALIFORNIA  
 SITE LOCATION MAP

FIGURE  
**1**  
 PROJECT NO.  
 2007-0057-01

- LEGEND
- ⊕ MW-1 MONITORING WELL LOCATION
  - ⊗ WATER VALVE LOCATION
  - APPROXIMATE SEWER CLEAN-OUT LOCATION
  - ⊙ EX-1 EXTRACTION WELL LOCATION
  - MW-6 ABANDONED WELL LOCATION
  - ⊗ AS-1 APPROXIMATE AIR SPARGE WELL LOCATION



USA57/UPPE  
 REV June 7, 2007  
 JMP

**STRATUS**  
ENVIRONMENTAL, INC.



FORMER USA STATION NO. 57  
10700 MACARTHUR BOULEVARD  
OAKLAND, CALIFORNIA

SITE PLAN

FIGURE

**2**

PROJECT NO.  
2007-0057-01