



ENVIRONMENTAL HEALTH SERVICES
ENVIRONMENTAL PROTECTION
1131 Harbor Bay Parkway, Suite 250
Alameda, CA 94502-6577
(510) 567-6700
FAX (510) 337-9335

NOTIFICATION OF POTENTIAL CASE CLOSURE SHELL #13-5691

September 27, 2012

**Site Location: 285 Hegenberger Road, Oakland, CA 94621
Fuel Leak Case RO0000220 and GeoTracker Global ID T0600101245**

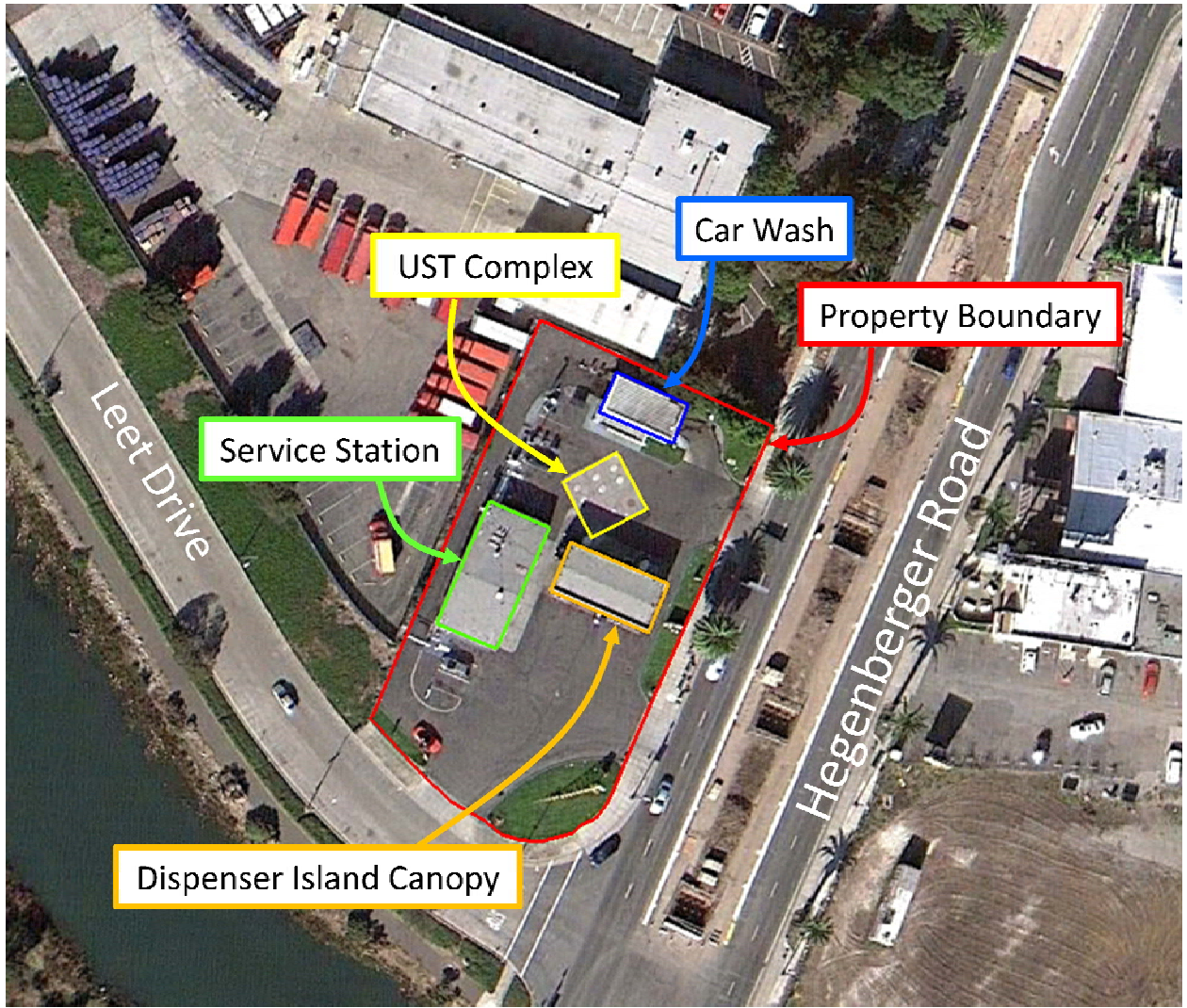
Summary – This fact sheet has been prepared to inform community members and other interested parties of potential case closure for a fuel leak case at the Shell service station located at corner of Leet Drive and Hegenberger Road in Oakland, California (see attached map on back). The active service station is currently equipped with a service station, car wash, three 12,000-gallon gasoline underground storage tanks (USTs), and four separate fuel dispensers. San Leandro Channel is approximately 90 feet south of the site.

In 1989, petroleum hydrocarbons were detected in soil samples collected during the installation of ten monitoring wells. Subsequent activities at the site have included soil borings, installation of additional groundwater monitoring wells, soil excavation, and remediation via soil vapor extraction, air sparging, and dual-phase extraction. Investigation activities at the site indicate that residual petroleum hydrocarbons remains on site, a majority of which is contained between 5 and 10 feet below ground surface (fbgs). A groundwater plume of dissolved petroleum hydrocarbons is present beneath the site and extends off-site beneath Hegenberger Road. The plume appears to be stable and residual petroleum hydrocarbons in soil and groundwater are expected to biodegrade over time. There are no water supply wells within the area of the site that are likely to be impacted by the plume. An evaluation of possible concentrations of groundwater discharges from the site to San Leandro Channel concluded that the plume had little potential to cause aquatic toxicity.

Site investigation and cleanup activities have been completed and it does not appear that the fuel release presents a risk to human health for nearby residents or site workers or San Leandro Channel. Therefore, ACEH is considering potential closure of the fuel leak case.

Next Step – The public is invited to review and comment on the potential closure of the fuel leak case. The entire case file can be viewed over the Internet on the ACEH website (<http://www.acgov.org/aceh/lop/ust.htm>) or the State of California Water Resources Control Board GeoTracker website (<http://geotracker.swrcb.ca.gov>). Please send written comments to Jerry Wickham at the address below; all comments will be forwarded to the responsible parties. **Comments received by December 5, 2012** will be considered and responded to prior to a final determination on the proposed case closure.

Additional information: Contact Jerry Wickham of the Alameda County Department of Environmental Health, 1131 Harbor Bay Parkway, Alameda, CA 94502 at 510-567-6791 or by email at jerry.wickham@acgov.org



Aerial View of Property (Google, 2012)

Fuel Leak Case RO000220 located at 285 Hegenberger Road in Oakland, CA