

EL. 101.85

PROP. LINE 94.50
68 FT. BILLBOARD (W/ FENCE UNDER)

EL. 101.45

EL. 100.27

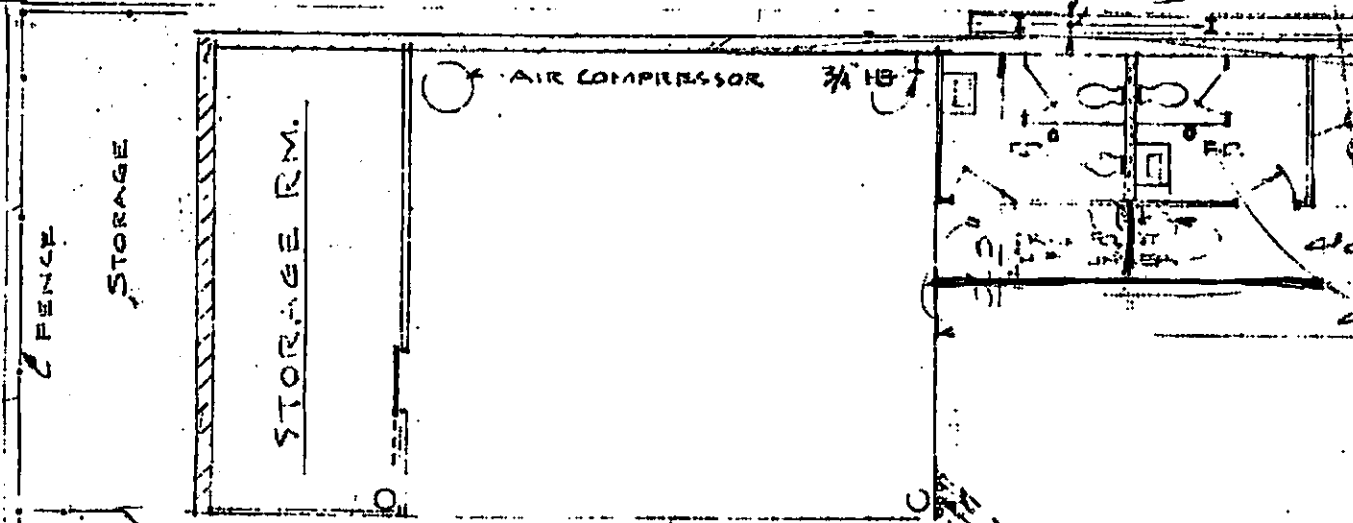
2 TEL. BOOTHS

35'-0" DRIVEWAY

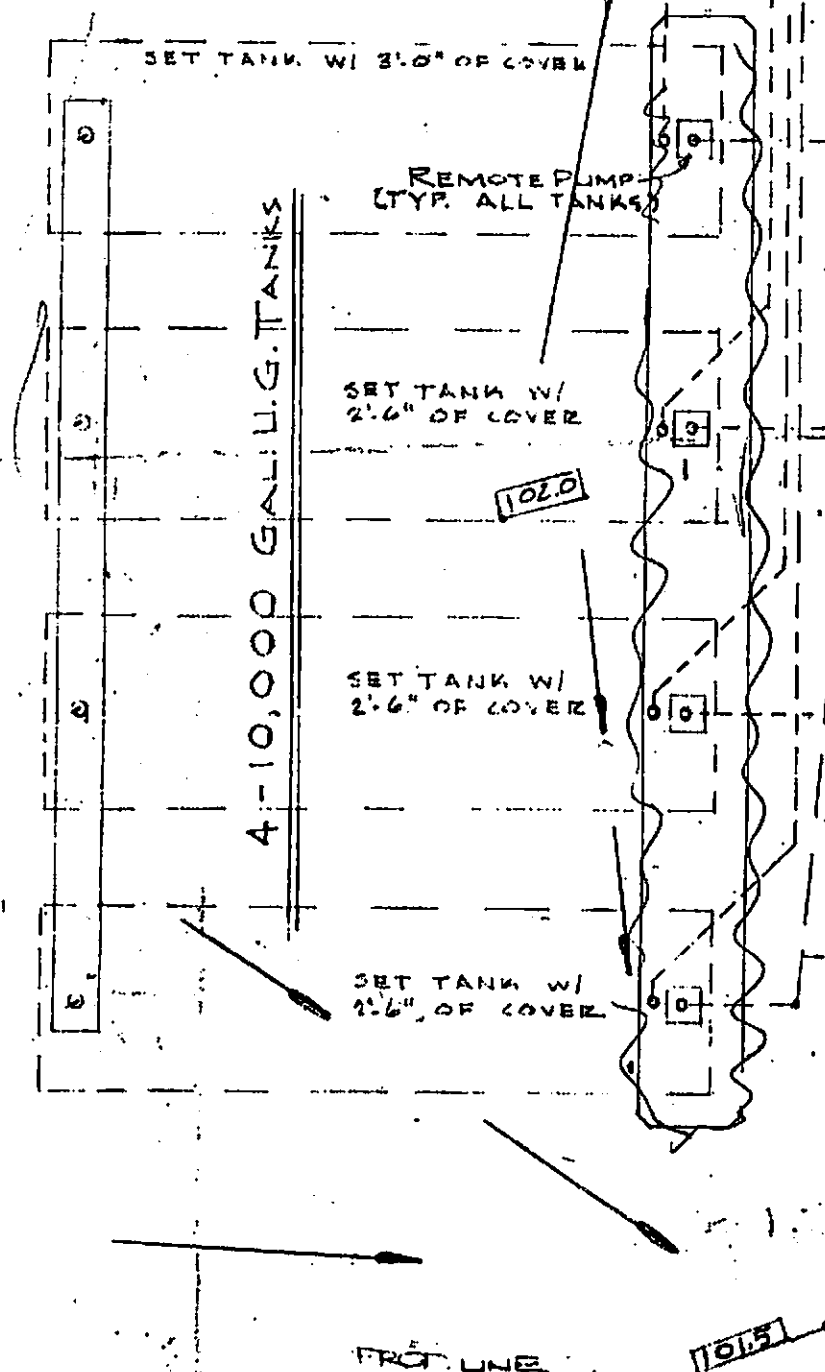
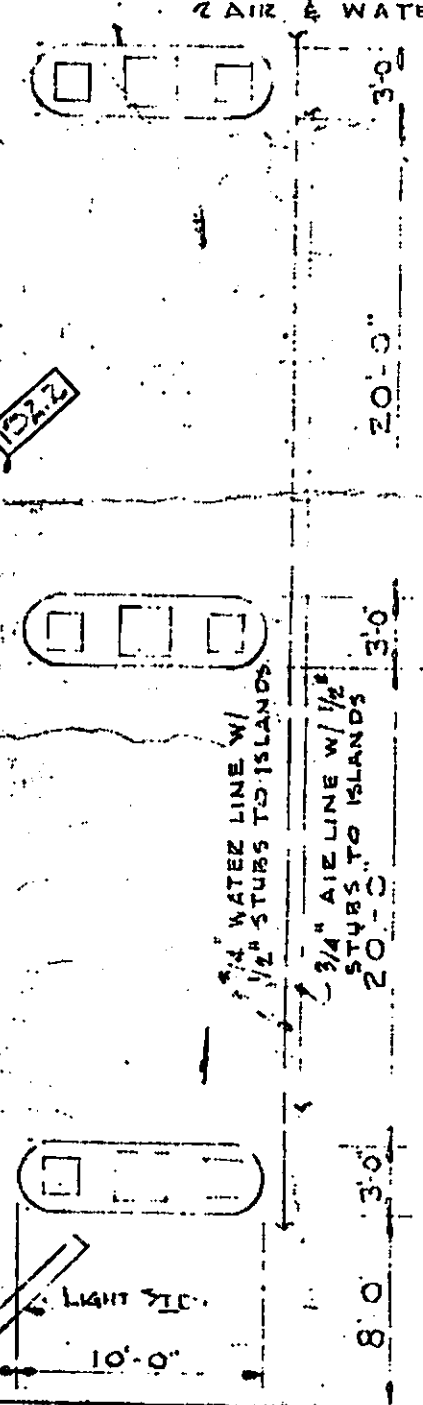
BUENA VISTA

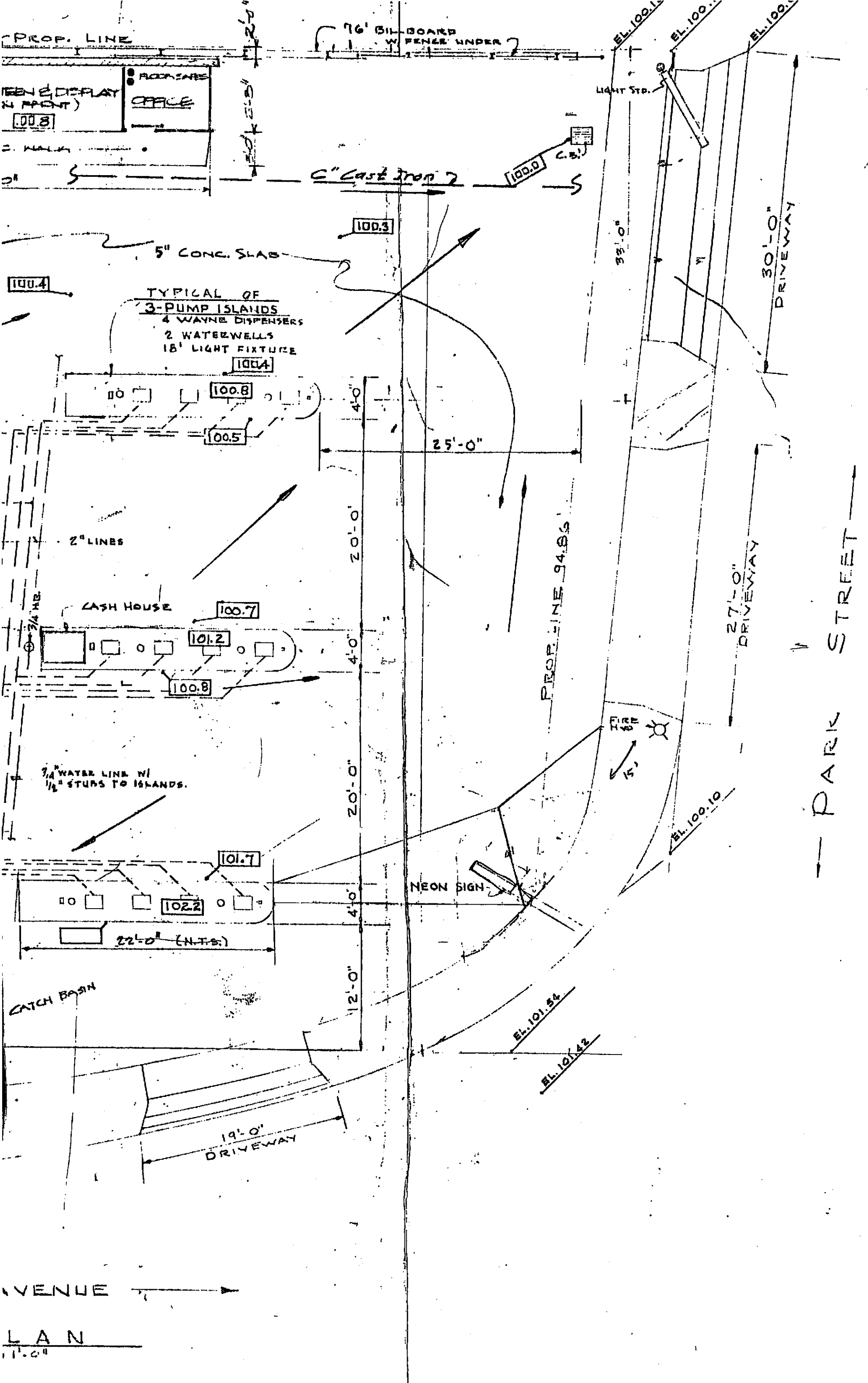
PLOT P

SCALE 1/8"



TYPICAL OF
3 SERVICE ISLANDS
1 VALVUM CLEANER
2 AIR & WATER OUTLETS





VENUE

LAN

1" = 10'

BUENA VISTA AVENUE (70' WIDE)

T.C. 100.87 POWER POLE 101.00

T.C. 100.85

GUTTER 100.64 D/W

T.C. 101.01

BL. LIER 101.08

WATER METER 101.11

POWER POLE

T.C. 101.33

ANCHOR 101.19

ELEC. BOX 101.44

T.C. 101.10

101.57

T.C. 101.10

D/W

POLE

101.42

101.57

101.47

101.42

101.57

101.57

GATE 65.00

N 61° 28' W

JUNIFFER

DRIVE W

101.43

101.51

101.57

DRAIN 101.21 @ 100.210

5" LEMON

101.35

101.35

101.40

WALK 101.46

101.41

LANDSCAPING

101.51

101.45

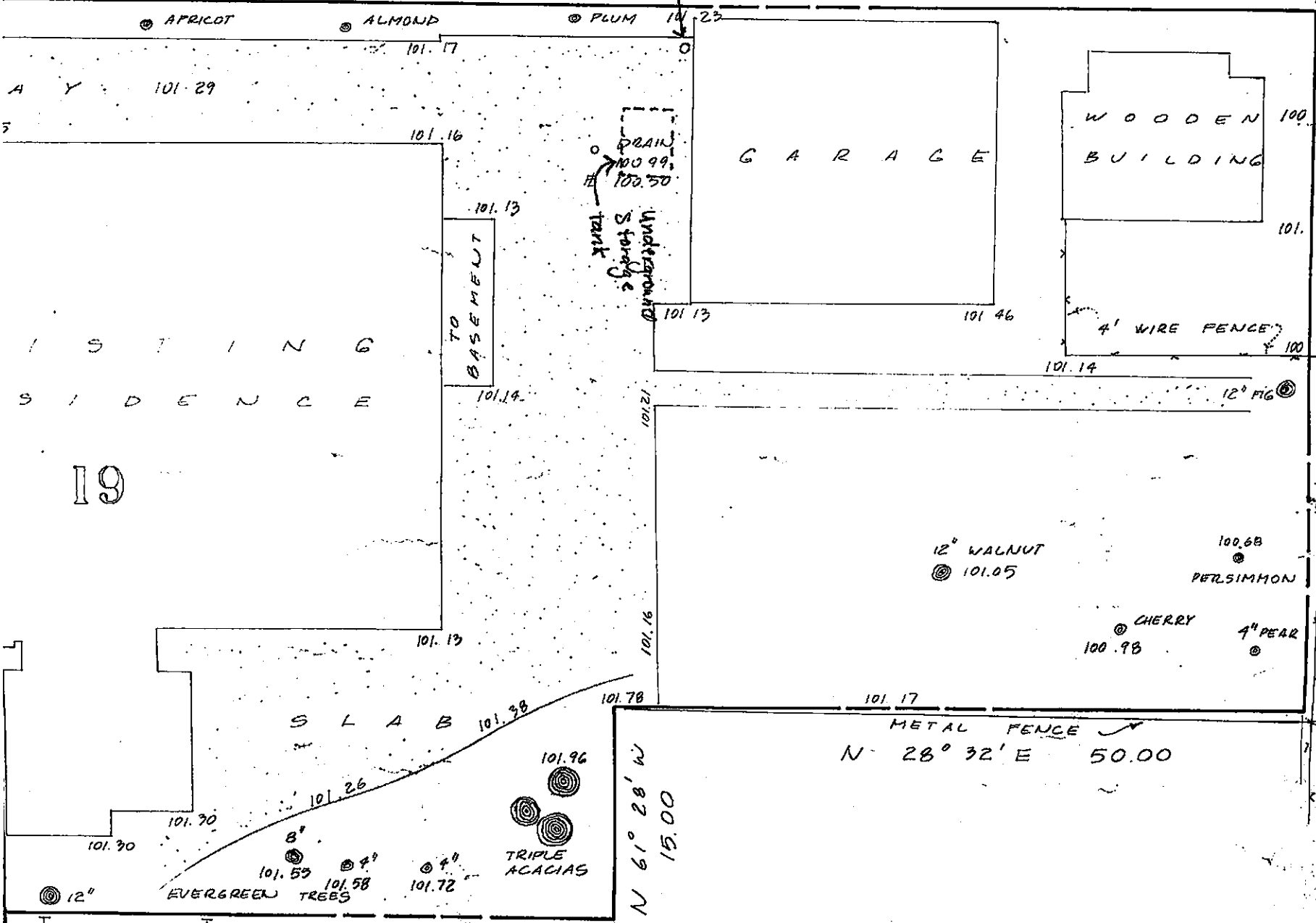
102.50 36° PINE

102.11

N 28° 32' E 95.00

20

N 28° 32' E 145.00



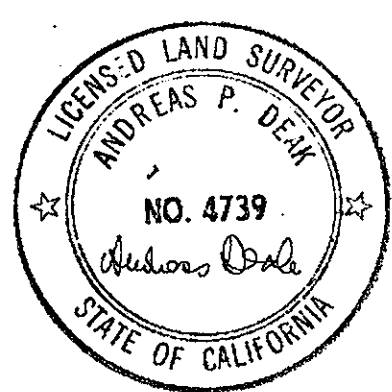
19

11

12

17

NOTE: TO OBTAIN CITY OF ALAMEDA DEDUCT 84.76.



TOPOGRAPHIC SURVEY OF LOT 16 PORTION OF LOTS 14 AND 15 45, BOOK 1 PAGE 14, ALAMEDA, COUNTY RECORDS, CALIFORNIA
FOR EXTRA OIL COMPANY 2307 PACIFIC AVE. ALAMEDA, CA
BY ANDREAS DEAK 216 BUENA VISTA
APRIL 22 1991 SCALE 1"