



ENVIRONMENTAL HEALTH SERVICES
ENVIRONMENTAL PROTECTION
1131 Harbor Bay Parkway, Suite 250
Alameda, CA 94502-6577
(510) 567-6700
FAX (510) 337-9335

NOTIFICATION OF POTENTIAL CASE CLOSURE
SHELL #13-5675
August 13, 2013

Site Location: 2120 Montana Street, Oakland, CA 94602
Fuel Leak Case RO0000173 and GeoTracker Global ID T0600101805

Summary – This fact sheet has been prepared to inform community members and other interested parties of potential case closure for a fuel leak case at the operating Shell-branded service station located at 2120 Montana Street in Oakland, California (see attached aerial photograph on back). Surrounding land use is mixed commercial and residential.

A potential gasoline release was observed in November 1997 when secondary containment was added to the three dispensers and turbine sumps. Up to 59 parts per million (ppm) Total Petroleum Hydrocarbons as gasoline (TPHg), 0.76 ppm benzene, and 1.1 ppm MTBE were detected in three soil samples collected from beneath the dispensers

Site investigation activities to define the extent of petroleum hydrocarbons in soil and groundwater have included soil gas sampling, advancement of exploratory soil borings, and installation and sampling of 11 groundwater monitoring wells. A groundwater extraction (GWE) system was installed in March 2003. From April 2003 to March 2007, the GWE system removed approximately 769,943 gallons of groundwater that contained an estimated 21.8 pounds of TPHg, 0.826 pounds of benzene, and 4.87 pounds of MTBE

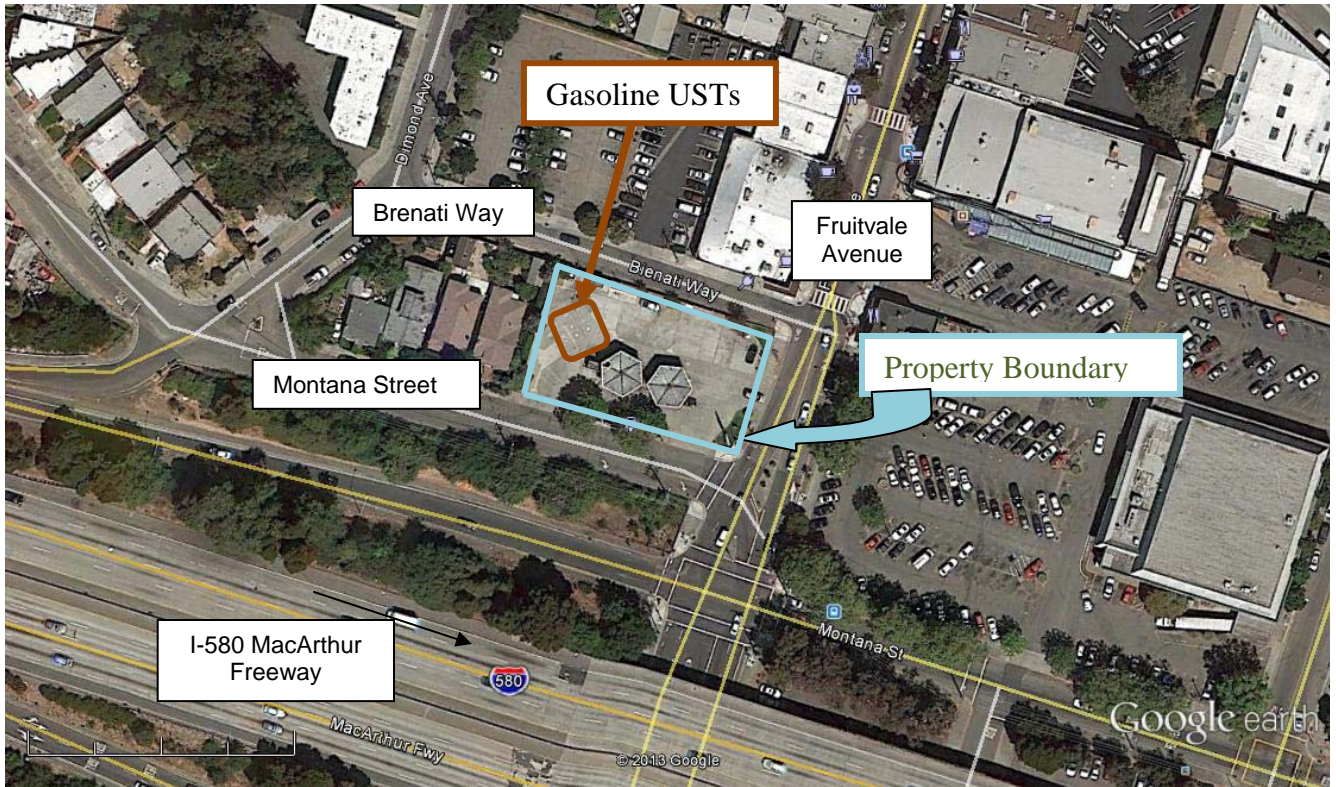
In November 2003, a small crack was found in the bottom of the regular-grade gasoline UST. After the crack was repaired, the UST passed a pressure test and was certified tight. The fuel dispensers and UST sumps were upgraded in May 2004. In November 2012, three 10,000-gallon USTs, dispensers, and piping were removed.

Site data indicate that a groundwater plume containing MTBE, TBA, and other dissolved petroleum hydrocarbons extended from the area of the fuel dispensers and underground storage tanks (USTs) southwest beneath Montana Street. Since 2001, the concentrations of dissolved petroleum hydrocarbons have decreased significantly. The plume appears to be shrinking in size and residual petroleum hydrocarbons in soil and groundwater are expected to biodegrade over time. The site has been evaluated in accordance with the State Water Resources Control Board Low-Threat Closure Policy. Site investigation and cleanup activities have been completed and it does not appear that the fuel release presents a risk to human health for nearby residents or site workers. Therefore, ACEH is considering potential closure of the fuel leak case.

Next Step – The public is invited to review and comment on the potential closure of the fuel leak case. The entire case file can be viewed over the Internet on the ACEH website (<http://www.acgov.org/aceh/lop/ust.htm>) or the State of California Water Resources Control Board GeoTracker website (<http://geotracker.swrcb.ca.gov>). Please send written comments to Jerry Wickham at the address below; all comments will be forwarded to the responsible parties.

Comments received by October 20, 2013 will be considered and responded to prior to a final determination on the proposed case closure.

Additional information: Contact Jerry Wickham of the Alameda County Department of Environmental Health, 1131 Harbor Bay Parkway, Alameda, CA 94502 at 510-567-6791 or by email at jerry.wickham@acgov.org



2120 Montana Street, Oakland, CA (Google, 2013)