



Atlantic Richfield Company  
(a BP affiliated company)

P.O. Box 1257  
San Ramon, CA 94583  
Phone: (925) 275-3801  
Fax: (925) 275-3815

30 April 2009

Re: First Quarter 2009 Ground-Water Monitoring Report  
Former Atlantic Richfield Company Station #6002  
6235 Seminary Avenue  
Oakland, California  
ACEH Case #RO0000163

“I declare, that to the best of my knowledge at the present time, that the information and/or recommendations contained in the attached document are true and correct.”

Submitted by:

Paul Supple  
Environmental Business Manger

**RECEIVED**

9:56 am, May 01, 2009

Alameda County  
Environmental Health



**First Quarter 2009 Ground-Water Monitoring Report**  
Former Atlantic Richfield Company Station #6002  
6235 Seminary Avenue  
Oakland, California

Prepared for

Mr. Paul Supple  
Environmental Business Manager  
Atlantic Richfield Company  
P.O. Box 1257  
San Ramon, California 94583

Prepared by



1324 Mangrove Avenue, Suite 212  
Chico, California 95926  
(530) 566-1400  
*www.broadbentinc.com*

30 April 2009

Project No. 06-88-634

30 April 2009

Project No. 06-88-634

Atlantic Richfield Company  
P.O. Box 1257  
San Ramon, CA 94583  
Submitted via ENFOS

Attn.: Mr. Paul Supple

Re: First Quarter 2009 Ground-Water Monitoring Report, Former Atlantic Richfield Company (a BP affiliated company) Station #6002, 6235 Seminary Avenue, Oakland, Alameda County, California; ACEH Case #RO0000163

Dear Mr. Supple:

Attached is the *First Quarter 2009 Ground-Water Monitoring Report* for Former Atlantic Richfield Company Station #6002 located at 6235 Seminary Avenue, Oakland, California (Site). This report presents a summary of results from ground-water monitoring and sampling conducted at the Site during the First Quarter of 2009.

Should you have questions regarding the work performed or results obtained, please do not hesitate to contact us at (530) 566-1400.

Sincerely,

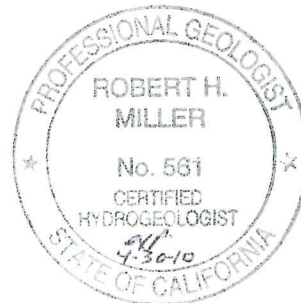
BROADBENT & ASSOCIATES, INC.



Thomas A. Venus, P.E.  
Senior Engineer



Robert H. Miller, P.G., C.HG.  
Principal Hydrogeologist



Enclosures

cc: Mr. Paresh Khatri, Alameda County Environmental Health (Submitted via ACEH ftp site)  
Electronic copy uploaded to GeoTracker

## STATION # 6002 QUARTERLY GROUND-WATER MONITORING REPORT

Facility: #6002	Address:	6235 Seminary Avenue, Oakland
Environmental Business Manager:		Mr. Paul Supple
Consulting Co./Contact Persons:		Broadbent & Associates, Inc.(BAI)/Rob Miller & Tom Venus (530) 566-1400
Consultant Project No.:		06-88-634
Primary Agency/Regulatory ID No.:		Alameda County Environmental Health (ACEH) ACEH Case #RO0000163
Facility Permits/Permitting Agency:		NA

### WORK PERFORMED THIS QUARTER (First Quarter 2009):

1. Prepared and submitted the Fourth Quarter 2008 Ground-Water Monitoring Report.
2. Conducted ground-water monitoring/sampling for First Quarter 2009. Work performed by Stratus Environmental, Inc. (Stratus) on 23 February 2009.

### WORK PROPOSED FOR NEXT QUARTER (Second Quarter 2009):

1. Prepared and submitted First Quarter 2009 Ground-Water Monitoring Report (contained herein).
2. Conduct ground-water monitoring/sampling for Second Quarter 2009.

### QUARTERLY RESULTS SUMMARY:

Current phase of project:	<b>Ground-Water Monitoring/Sampling</b>
Frequency of ground-water monitoring:	<b>Quarterly: Wells MW-3, MW-4, MW-5, MW-6, MW-7, MW-8, VW-1, VW-3, VW-4</b>
Frequency of ground-water sampling:	<b>Quarterly: Wells MW-5, VW-1, VW-4</b> <b>Annually (3Q): Wells MW-3, MW-4, MW-6, MW-7, MW-8</b>
Is free product (FP) present on-site:	<b>No</b>
Bulk Soil removed to Date:	<b>Approximately 370 cubic yards of TPH-impacted soil</b>
Current remediation techniques:	<b>NA</b>
Depth to ground water (below TOC):	<b>6.60 ft (VW-3) to 10.50 ft (MW-5)</b>
General ground-water flow direction:	<b>West</b>
Approximate hydraulic gradient:	<b>0.05 ft/ft</b>

### DISCUSSION:

First quarter 2009 ground-water monitoring and sampling was conducted at Former Atlantic Richfield Company Service Station #6002 on 23 February 2009 by Stratus personnel. Water levels were gauged in eight of the nine wells associated with Station #6002. Well MW-8 was inaccessible and therefore the water level was not gauged. No other significant irregularities were noted during water level gauging. Depth to water measurements ranged from 6.60 ft at well VW-3 to 10.50 ft. at well MW-5. Resulting ground-water surface elevations ranged from 250.33 ft above mean sea level (msl) in up-gradient well MW-6 to 234.61 ft above msl in down-gradient well MW-7. Water level elevations reached historic maximum values for each well gauged this quarter with the exception of wells MW-6 and MW-8, as summarized in Table 1. Water level elevations yielded a potentiometric ground-water flow direction and gradient to the west at approximately 0.05 ft/ft, generally consistent with the historical data (see Table 3). Ground-water monitoring field data sheets are provided within Appendix A. Measured depths to water and respective ground-water elevations are summarized in Table 1. Potentiometric ground-water elevation contours are presented in Drawing 1.

Consistent with the current ground-water sampling schedule, water samples were collected from wells MW-5, VW-1, and VW-4. No irregularities were noted during sampling. Samples were submitted under chain-of-custody protocol to Calscience Environmental Laboratories, Inc. (Garden Grove, California) for analysis of Gasoline Range Organics (GRO, C6-C12) by EPA Method 8015B; Benzene, Toluene, Ethylbenzene, and Total Xylenes (BTEX) by EPA Method 8260B; and tert-Amyl methyl ether (TAME), tert-Butyl alcohol (TBA), Di-isopropyl ether (DIPE), 1,2-Dibromomethane (EDB), 1,2-Dichloroethane (1,2-DCA), Ethanol, Ethyl tert-butyl ether (ETBE), and Methyl tert-butyl ether (MTBE) by EPA Method 8260B. The laboratory noted the “quantitation of unknown hydrocarbons in sample based on gasoline” for GRO concentrations detected in the samples collected from wells MW-5 and VW-4. No other significant irregularities were noted during analysis of the samples by the laboratory. Ground-water sampling field data sheets and the laboratory analytical report, including chain-of-custody documentation, are provided in Appendix A.

Gasoline Range Organics were detected above the laboratory reporting limit in two of the three wells sampled this quarter at concentrations of 4,100 micrograms per liter ( $\mu\text{g/L}$ ) and 290  $\mu\text{g/L}$  in wells MW-5 and VW-4, respectively. Benzene was detected above the laboratory reporting limit in well VW-4 at a concentration of 0.97  $\mu\text{g/L}$ . Ethylbenzene and Total Xylenes were detected above the laboratory reporting limits in well MW-5 at concentrations of 1.9  $\mu\text{g/L}$  and 1.1  $\mu\text{g/L}$ , respectively. TBA was detected above the laboratory reporting limit in two of the three wells sampled at concentrations of 14  $\mu\text{g/L}$  and 99  $\mu\text{g/L}$  in wells MW-5 and VW-4, respectively. MTBE was detected above the laboratory reporting limit in each of the three wells sampled at concentrations up to 27  $\mu\text{g/L}$  in VW-4. The remaining fuel additives and oxygenates were not detected above their laboratory reporting limits in the three wells sampled this quarter.

Detected analyte concentrations were within the historic minimum and maximum ranges recorded for each well with the following exceptions: TBA reached a historic minimum concentration in well MW-5 (14  $\mu\text{g/L}$ ) and MTBE reached a historic minimum concentration in well VW-1 (0.84  $\mu\text{g/L}$ ). Historic laboratory analytical results are summarized in Table 1 and Table 2. The most recent GRO, Benzene, and MTBE concentrations are also presented in Drawing 1. A copy of the laboratory analytical report, including chain-of-custody documentation, is provided in Appendix A. Ground-water monitoring data (GEO\_WELL) and laboratory analytical results (EDF) were uploaded to the GeoTracker AB2886 database. Upload confirmation pages are provided in Appendix B.

## **CLOSURE:**

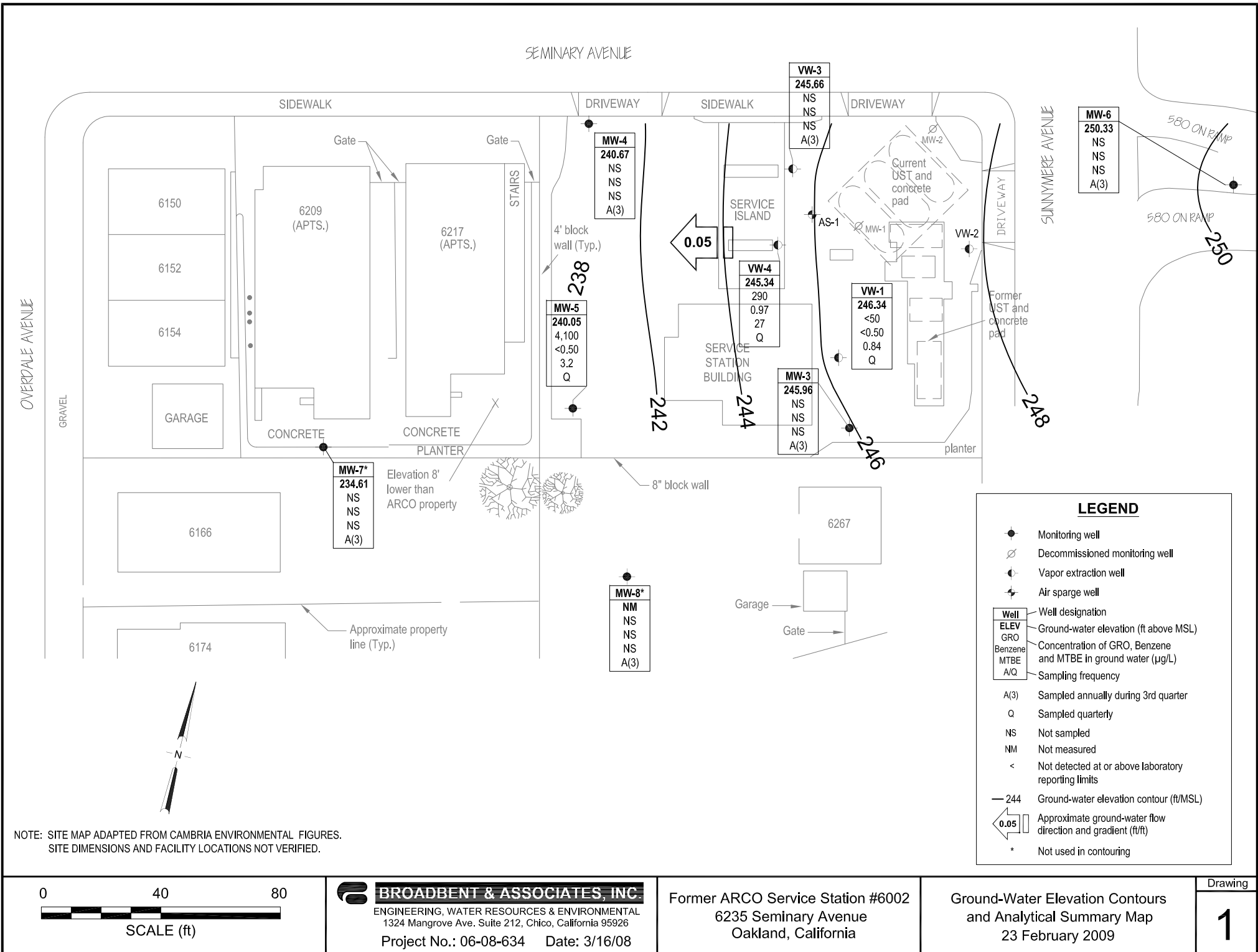
The findings presented in this report are based upon: observations of Stratus field personnel (see Appendix A), the points investigated, and results of laboratory tests performed by Calscience Environmental Laboratories, Inc. (Garden Grove, California). Our services were performed in accordance with the generally accepted standard of practice at the time this report was written. No other warranty, expressed or implied was made. This report has been prepared for the exclusive use of Atlantic Richfield Company. It is possible that variations in soil or ground-water conditions could exist beyond points explored in this investigation. Also, changes in site conditions could occur in the future due to variations in rainfall, temperature, regional water usage, or other factors.

## **ATTACHMENTS:**

Drawing 1. Ground-Water Elevation Contours and Analytical Summary Map, 23 February 2009, Former ARCO Service Station #6002, 6235 Seminary Avenue, Oakland, California

Table 1. Summary of Ground-Water Monitoring Data: Relative Water Elevations and Laboratory Analyses, Station #6002, 6235 Seminary Ave., Oakland, California

- Table 2. Summary of Fuel Additives Analytical Data, Station #6002, 6235 Seminary Ave., Oakland, California
- Table 3. Historical Ground-Water Flow Direction and Gradient, Station #6002, 6235 Seminary Avenue, Oakland, California
- Appendix A. Stratus Ground-Water Sampling Data Package (Includes Field Data Sheets, Laboratory Analytical Report with Chain-of-Custody Documentation, and Field Procedures)
- Appendix B. GeoTracker Upload Confirmation



SEMINARY AVENUE

OVERDALE AVENUE

SUNNYSIDE AVENUE

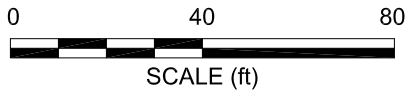
NOTE: SITE MAP ADAPTED FROM CAMBRIA ENVIRONMENTAL FIGURES. SITE DIMENSIONS AND FACILITY LOCATIONS NOT VERIFIED.



Well	
ELEV	Ground-water elevation (ft above MSL)
GRO	Concentration of GRO, Benzene and MTBE in ground water (µg/L)
Benzene	
MTBE	
A/Q	Sampling frequency
A(3)	Sampled annually during 3rd quarter
Q	Sampled quarterly
NS	Not sampled
NM	Not measured
<	Not detected at or above laboratory reporting limits
—244	Ground-water elevation contour (ft/MSL)
◀0.05	Approximate ground-water flow direction and gradient (ft/ft)
*	Not used in contouring

**LEGEND**

- Monitoring well
- ⊘ Decommissioned monitoring well
- ⊙ Vapor extraction well
- ⊕ Air sparge well



**BROADBENT & ASSOCIATES, INC.**  
 ENGINEERING, WATER RESOURCES & ENVIRONMENTAL  
 1324 Mangrove Ave. Suite 212, Chico, California 95926  
 Project No.: 06-08-634 Date: 3/16/08

Former ARCO Service Station #6002  
 6235 Seminary Avenue  
 Oakland, California

Ground-Water Elevation Contours  
 and Analytical Summary Map  
 23 February 2009

Drawing

1

**Table 1. Summary of Ground-Water Monitoring Data: Relative Water Elevations and Laboratory Analyses**

**Station #6002, 6235 Seminary Ave., Oakland, CA**

Well and Sample Date	P/NP	Comments	TOC (feet msl)	Top of Screen (ft bgs)	Bottom of Screen (ft bgs)	DTW (feet bgs)	Product Thickness (feet)	Water Level Elevation (feet msl)	Concentrations in (µg/L)						DO (mg/L)	pH
									GRO/TPHg	Benzene	Toluene	Ethyl-Benzene	Total Xylenes	MtBE		
<b>AS-1</b>																
6/29/1995	--		--	20.0	22.0	9.20	--	--	<50	1.6	<0.5	0.9	0.9	--	--	--
<b>MW-1</b>																
3/15/1995	--		247.06	4.5	24.5	7.37	--	239.69	13,000	1,200	44	770	1,100	--	--	--
5/30/1995	--		247.06	4.5	24.5	8.48	--	238.58	19,000	1,600	30	890	1,400	--	--	--
9/1/1995	--		247.06	4.5	24.5	9.47	--	237.59	14,000	1,300	28	480	780	24,000	--	--
11/13/1995	--	a, b	247.06	4.5	24.5	8.78	--	238.28	11,000	570	17	260	410	25,000	--	--
2/23/1996	--	d	247.06	4.5	24.5	--	--	--	--	--	--	--	--	--	--	--
<b>MW-2</b>																
3/15/1995	--		249.30	5.0	17.5	8.25	--	241.05	<50	<0.5	<0.5	<0.5	<0.5	--	--	--
5/30/1995	--		249.30	5.0	17.5	9.93	--	239.37	<50	<0.5	<0.5	<0.5	<0.5	--	--	--
9/1/1995	--		249.30	5.0	17.5	10.69	--	238.61	<50	<0.5	<0.5	<0.5	<0.5	<3	--	--
11/13/1995	--		249.30	5.0	17.5	10.32	--	238.98	<50	<0.5	<0.5	<0.5	<0.5	--	--	--
2/23/1996	--	d	249.30	5.0	17.5	--	--	--	--	--	--	--	--	--	--	--
<b>MW-3</b>																
3/15/1995	--		248.35	5.0	24.5	6.76	--	241.59	<50	<0.5	<0.5	<0.5	<0.5	--	--	--
5/30/1995	--		248.35	5.0	24.5	7.81	--	240.54	<50	<0.5	<0.5	<0.5	<0.5	--	--	--
9/1/1995	--		248.35	5.0	24.5	8.65	--	239.70	<50	<0.5	<0.5	<0.5	<0.5	<3	--	--
11/13/1995	--		248.35	5.0	24.5	8.25	--	240.10	120	45	0.7	<0.5	6.2	--	--	--
2/23/1996	--		248.35	5.0	24.5	6.64	--	241.71	<50	<0.5	<0.5	0.6	1.9	<3	--	--
5/10/1996	--		248.35	5.0	24.5	7.95	--	240.40	--	--	--	--	--	--	--	--
8/9/1996	--		248.35	5.0	24.5	8.06	--	240.29	--	--	--	--	--	--	--	--
11/8/1996	--	e	248.35	5.0	24.5	--	--	--	--	--	--	--	--	--	--	--
3/21/1997	--		248.35	5.0	24.5	8.21	--	240.14	<50	<0.5	<0.5	<0.5	<0.5	<3	--	--
5/27/1997	--		248.35	5.0	24.5	8.25	--	240.10	--	--	--	--	--	--	--	--
8/5/1997	--		248.35	5.0	24.5	8.29	--	240.06	--	--	--	--	--	--	--	--
10/29/1997	--		248.35	5.0	24.5	8.58	--	239.77	<50	<0.5	<0.5	<0.5	<0.5	<3	--	--
2/25/1998	--		248.35	5.0	24.5	7.69	--	240.66	<50	<0.5	<0.5	<0.5	<0.5	<3	--	--
5/12/1998	--		248.35	5.0	24.5	8.20	--	240.15	--	--	--	--	--	--	--	--
7/28/1998	--		248.35	5.0	24.5	8.55	--	239.80	--	--	--	--	--	--	--	--



**Table 1. Summary of Ground-Water Monitoring Data: Relative Water Elevations and Laboratory Analyses**

**Station #6002, 6235 Seminary Ave., Oakland, CA**

Well and Sample Date	P/NP	Comments	TOC (feet msl)	Top of Screen (ft bgs)	Bottom of Screen (ft bgs)	DTW (feet bgs)	Product Thickness (feet)	Water Level Elevation (feet msl)	Concentrations in (µg/L)						DO (mg/L)	pH
									GRO/TPHg	Benzene	Toluene	Ethyl-Benzene	Total Xylenes	MtBE		
<b>MW-3 Cont.</b>																
10/27/1998	--		248.35	5.0	24.5	8.30	--	240.05	--	--	--	--	--	--	--	--
2/8/1999	--		248.35	5.0	24.5	7.90	--	240.45	<50	<0.5	<0.5	<0.5	<0.5	<3	--	--
6/1/1999	--		248.35	5.0	24.5	8.40	--	239.95	--	--	--	--	--	--	--	--
8/25/1999	--		248.35	5.0	24.5	8.49	--	239.86	--	--	--	--	--	--	1.67	--
10/29/1999	--		248.35	5.0	24.5	8.52	--	239.83	--	--	--	--	--	--	6.9	--
2/16/2000	NP		248.35	5.0	24.5	8.03	--	240.32	<50	<0.5	0.8	<0.5	<1	<3	8.51	--
6/23/2000	--		248.35	5.0	24.5	7.55	--	240.80	--	--	--	--	--	--	2.1	--
8/17/2000	--		248.35	5.0	24.5	8.65	--	239.70	--	--	--	--	--	--	1.1	--
11/10/2000	--		248.35	5.0	24.5	7.19	--	241.16	--	--	--	--	--	--	--	--
2/12/2001	NP		248.35	5.0	24.5	8.60	--	239.75	<50	<0.50	<0.50	<0.50	<0.50	<2.5	0.81	--
4/13/2001	--		248.35	5.0	24.5	6.13	--	242.22	--	--	--	--	--	--	--	--
7/18/2001	--		248.35	5.0	24.5	6.47	--	241.88	--	--	--	--	--	--	--	--
10/1/2001	--		248.35	5.0	24.5	6.99	--	241.36	--	--	--	--	--	--	--	--
1/14/2002	NP		248.35	5.0	24.5	5.47	--	242.88	<50	<0.50	<0.50	<0.50	<0.50	<5.0	--	--
4/3/2002	--		248.35	5.0	24.5	6.95	--	241.40	--	--	--	--	--	--	--	--
8/8/2002	--		248.35	5.0	24.5	8.78	--	239.57	--	--	--	--	--	--	--	--
11/27/2002	--		248.35	5.0	24.5	8.52	--	239.83	--	--	--	--	--	--	--	--
2/10/2003	NP		248.35	5.0	24.5	8.40	--	239.95	<50	<0.50	<0.50	<0.50	<0.50	<0.50	0.7	6.4
6/3/2003	--		248.35	5.0	24.5	8.40	--	239.95	--	--	--	--	--	--	--	--
8/14/2003	--		248.35	5.0	24.5	8.60	--	239.75	--	--	--	--	--	--	--	--
11/13/2003	--		248.35	5.0	24.5	8.41	--	239.94	--	--	--	--	--	--	--	--
02/13/2004	--		253.88	5.0	24.5	8.40	--	245.48	--	--	--	--	--	--	--	--
05/05/2004	--		253.88	5.0	24.5	8.28	--	245.60	--	--	--	--	--	--	--	--
08/30/2004	NP		253.88	5.0	24.5	10.32	--	243.56	<50	<0.50	<0.50	<0.50	<0.50	0.72	1.4	6.4
11/08/2004	--		253.88	5.0	24.5	8.12	--	245.76	--	--	--	--	--	--	--	--
02/07/2005	--		253.88	5.0	24.5	8.20	--	245.68	--	--	--	--	--	--	--	--
05/09/2005	--		253.88	5.0	24.5	8.23	--	245.65	--	--	--	--	--	--	--	--
08/11/2005	NP		253.88	5.0	24.5	8.72	--	245.16	<50	<0.50	<0.50	<0.50	<0.50	0.73	1.6	6.1
12/02/2005	--		253.88	5.0	24.5	8.15	--	245.73	--	--	--	--	--	--	--	--
02/15/2006	--		253.88	5.0	24.5	8.23	--	245.65	--	--	--	--	--	--	--	--
5/19/2006	--		253.88	5.0	24.5	8.38	--	245.50	--	--	--	--	--	--	--	--

**Table 1. Summary of Ground-Water Monitoring Data: Relative Water Elevations and Laboratory Analyses**

**Station #6002, 6235 Seminary Ave., Oakland, CA**

Well and Sample Date	P/NP	Comments	TOC (feet msl)	Top of Screen (ft bgs)	Bottom of Screen (ft bgs)	DTW (feet bgs)	Product Thickness (feet)	Water Level Elevation (feet msl)	Concentrations in (µg/L)						DO (mg/L)	pH
									GRO/TPHg	Benzene	Toluene	Ethyl-Benzene	Total Xylenes	MtBE		
<b>MW-3 Cont.</b>																
8/25/2006	P		253.88	5.0	24.5	8.59	--	245.29	<50	<0.50	<0.50	<0.50	<0.50	<0.50	1.15	6.2
11/2/2006	--		253.88	5.0	24.5	8.65	--	245.23	--	--	--	--	--	--	--	--
2/6/2007	--		253.88	5.0	24.5	8.38	--	245.50	--	--	--	--	--	--	--	--
5/9/2007	--		253.88	5.0	24.5	8.42	--	245.46	--	--	--	--	--	--	--	--
8/8/2007	NP		253.88	5.0	24.5	8.67	--	245.21	<50	<0.50	<0.50	<0.50	<0.50	<0.50	1.16	6.90
11/14/2007	--		253.88	5.0	24.5	8.48	--	245.40	--	--	--	--	--	--	--	--
2/28/2008	--		253.88	5.0	24.5	8.28	--	245.60	--	--	--	--	--	--	--	--
5/23/2008	--		253.88	5.0	24.5	8.42	--	245.46	--	--	--	--	--	--	--	--
8/21/2008	NP		253.88	5.0	24.5	8.52	--	245.36	<50	<0.50	<0.50	<0.50	<0.50	0.81	1.17	7.17
11/13/2008	--		253.88	5.0	24.5	8.52	--	245.36	--	--	--	--	--	--	--	--
<b>2/23/2009</b>	<b>--</b>		<b>253.88</b>	<b>5.0</b>	<b>24.5</b>	<b>7.92</b>	<b>--</b>	<b>245.96</b>	<b>--</b>	<b>--</b>	<b>--</b>	<b>--</b>	<b>--</b>	<b>--</b>	<b>--</b>	<b>--</b>
<b>MW-4</b>																
3/15/1995	--		242.91	4.5	24.5	9.37	--	233.54	<50	<0.5	<0.5	<0.5	<0.5	--	--	--
5/30/1995	--		242.91	4.5	24.5	11.47	--	231.44	<50	<0.5	<0.5	<0.5	<0.5	--	--	--
9/1/1995	--		242.91	4.5	24.5	12.28	--	230.63	78	<0.5	0.7	<0.5	<0.5	<3	--	--
11/13/1995	--		242.91	4.5	24.5	11.75	--	231.16	<50	<0.5	<0.5	<0.5	<0.5	--	--	--
2/23/1996	--		242.91	4.5	24.5	8.51	--	234.40	59	1.2	7.4	1.6	9.3	3	--	--
5/10/1996	--		242.91	4.5	24.5	11.35	--	231.56	<50	<0.5	<0.5	<0.5	<0.5	<3	--	--
8/9/1996	--		242.91	4.5	24.5	9.70	--	233.21	<50	<0.5	<0.5	<0.5	<0.5	<3	--	--
11/8/1996	--		242.91	4.5	24.5	11.79	--	231.12	<50	<0.5	<0.5	<0.5	<0.5	<3	--	--
3/21/1997	--		242.91	4.5	24.5	10.94	--	231.97	<50	<0.5	<0.5	<0.5	<0.5	81	--	--
5/27/1997	--		242.91	4.5	24.5	11.51	--	231.40	<50	<0.5	<0.5	<0.5	<0.5	<3	--	--
8/5/1997	--		242.91	4.5	24.5	11.90	--	231.01	<50	<0.5	<0.5	<0.5	<0.5	<3	--	--
10/29/1997	--		242.91	4.5	24.5	12.00	--	230.91	<50	<0.5	<0.5	<0.5	<0.5	<3	--	--
2/25/1998	--		242.91	4.5	24.5	8.34	--	234.57	<50	<0.5	0.9	<0.5	0.9	4	--	--
5/12/1998	--		242.91	4.5	24.5	10.93	--	231.98	<50	<0.5	<0.5	<0.5	<0.5	<3	--	--
7/28/1998	--		242.91	4.5	24.5	12.08	--	230.83	<50	<0.5	<0.5	<0.5	<0.5	<3	--	--
10/27/1998	--		242.91	4.5	24.5	11.40	--	231.51	<5,000	<50	<50	160	64	6,400	--	--
2/8/1999	--		242.91	4.5	24.5	8.40	--	234.51	<50	<0.5	<0.5	<0.5	<0.5	<3	--	--
6/1/1999	NP		242.91	4.5	24.5	11.93	--	230.98	<50	<0.5	<0.5	<0.5	<0.5	<3	4	6.26

**Table 1. Summary of Ground-Water Monitoring Data: Relative Water Elevations and Laboratory Analyses**

**Station #6002, 6235 Seminary Ave., Oakland, CA**

Well and Sample Date	P/NP	Comments	TOC (feet msl)	Top of Screen (ft bgs)	Bottom of Screen (ft bgs)	DTW (feet bgs)	Product Thickness (feet)	Water Level Elevation (feet msl)	Concentrations in (µg/L)						DO (mg/L)	pH
									GRO/TPHg	Benzene	Toluene	Ethyl-Benzene	Total Xylenes	MtBE		
<b>MW-4 Cont.</b>																
8/25/1999	NP		242.91	4.5	24.5	12.21	--	230.70	<50	<0.5	<0.5	<0.5	<0.5	<3	1.29	6.34
10/29/1999	NP		242.91	4.5	24.5	12.37	--	230.54	<50	<0.5	<0.5	<0.5	<1	<3	1.5	5.60
2/16/2000	NP		242.91	4.5	24.5	7.45	--	235.46	<50	<0.5	<0.5	<0.5	<1	<3	2.38	--
6/23/2000	NP		242.91	4.5	24.5	12.31	--	230.60	<50	<0.50	<0.50	<0.50	<0.50	<2.50	2.8	--
8/17/2000	--	f	242.91	4.5	24.5	--	--	--	<50	<0.50	<0.50	<0.50	<0.50	<2.50	--	--
8/17/2000	NP		242.91	4.5	24.5	11.92	--	230.99	<50	<0.50	<0.50	<0.50	<0.50	<2.50	2.38	--
11/10/2000	NP		242.91	4.5	24.5	10.80	--	232.11	<50	<0.50	<0.50	<0.50	<0.50	<2.50	1.55	--
2/12/2001	NP		242.91	4.5	24.5	11.65	--	231.26	<50	<0.50	<0.50	<0.50	<0.50	<2.50	1.12	--
4/13/2001	NP		242.91	4.5	24.5	8.17	--	234.74	<50	<0.50	<0.50	<0.50	<0.50	<2.50	--	--
4/13/2001	--	f	242.91	4.5	24.5	--	--	--	<50	<0.50	<0.50	<0.50	<0.50	<2.50	--	--
7/18/2001	NP		242.91	4.5	24.5	8.51	--	234.40	<50	<0.50	<0.50	<0.50	<0.50	<2.5	--	--
10/1/2001	NP		242.91	4.5	24.5	8.71	--	234.20	<50	<0.50	<0.50	<0.50	<0.50	<2.5	--	--
1/14/2002	NP		242.91	4.5	24.5	7.13	--	235.78	<50	<0.50	<0.50	<0.50	<0.50	<5.0	--	--
1/14/2002	--	f	242.91	4.5	24.5	--	--	--	<50	<0.50	<0.50	<0.50	<0.50	<5.0	--	--
4/3/2002	NP		242.91	4.5	24.5	10.10	--	232.81	<50	<0.50	<0.50	<0.50	<0.50	<2.5	--	--
8/8/2002	NP		242.91	4.5	24.5	12.64	--	230.27	<50	<0.50	<0.50	<0.50	<0.50	<2.5	2.4	8.1
11/27/2002	NP		242.91	4.5	24.5	12.01	--	230.90	<50	<0.50	<0.50	<0.50	<0.50	4.7	2.5	6.5
2/10/2003	NP		242.91	4.5	24.5	11.22	--	231.69	<50	<0.50	<0.50	<0.50	<0.50	<0.50	0.8	6.6
6/3/2003	--		242.91	4.5	24.5	11.54	--	231.37	<50	<0.50	<0.50	<0.50	<0.50	<0.50	3.9	6
8/14/2003	--		242.91	4.5	24.5	12.41	--	230.50	<50	<0.50	<0.50	<0.50	<0.50	<0.50	1.8	6.3
11/13/2003	--		242.91	4.5	24.5	11.64	--	231.27	--	--	--	--	--	--	--	--
02/13/2004	--		248.62	4.5	24.5	10.28	--	238.34	--	--	--	--	--	--	--	--
05/05/2004	--		248.62	4.5	24.5	12.04	--	236.58	--	--	--	--	--	--	--	--
08/30/2004	NP		248.62	4.5	24.5	12.98	--	235.64	<50	<0.50	<0.50	<0.50	<0.50	<0.50	1.6	5.8
11/08/2004	--		248.62	4.5	24.5	11.29	--	237.33	--	--	--	--	--	--	--	--
02/07/2005	--		248.62	4.5	24.5	10.03	--	238.59	--	--	--	--	--	--	--	--
05/09/2005	--		248.62	4.5	24.5	10.65	--	237.97	--	--	--	--	--	--	--	--
08/11/2005	NP		248.62	4.5	24.5	12.68	--	235.94	<50	<0.50	<0.50	<0.50	<0.50	<0.50	1.9	6.5
12/02/2005	--		248.62	4.5	24.5	10.35	--	238.27	--	--	--	--	--	--	--	--
02/15/2006	--		248.62	4.5	24.5	8.38	--	240.24	--	--	--	--	--	--	--	--
5/19/2006	--		248.62	4.5	24.5	11.24	--	237.38	--	--	--	--	--	--	--	--

**Table 1. Summary of Ground-Water Monitoring Data: Relative Water Elevations and Laboratory Analyses**

**Station #6002, 6235 Seminary Ave., Oakland, CA**

Well and Sample Date	P/NP	Comments	TOC (feet msl)	Top of Screen (ft bgs)	Bottom of Screen (ft bgs)	DTW (feet bgs)	Product Thickness (feet)	Water Level Elevation (feet msl)	Concentrations in (µg/L)						DO (mg/L)	pH
									GRO/TPHg	Benzene	Toluene	Ethyl-Benzene	Total Xylenes	MtBE		
<b>MW-4 Cont.</b>																
8/25/2006	P		248.62	4.5	24.5	12.28	--	236.34	<50	<0.50	<0.50	<0.50	<0.50	<0.50	2.51	5.7
11/2/2006	--		248.62	4.5	24.5	12.64	--	235.98	--	--	--	--	--	--	--	--
2/6/2007	--		248.62	4.5	24.5	10.52	--	238.10	--	--	--	--	--	--	--	--
5/9/2007	--		248.62	4.5	24.5	10.97	--	237.65	--	--	--	--	--	--	--	--
8/8/2007	NP		248.62	4.5	24.5	12.95	--	235.67	<50	<0.50	<0.50	<0.50	<0.50	<0.50	1.70	7.11
11/14/2007	--		248.62	4.5	24.5	11.38	--	237.24	--	--	--	--	--	--	--	--
2/28/2008	--		248.62	4.5	24.5	9.01	--	239.61	--	--	--	--	--	--	--	--
5/23/2008	--		248.62	4.5	24.5	11.20	--	237.42	--	--	--	--	--	--	--	--
8/21/2008	NP		248.62	4.5	24.5	12.37	--	236.25	<50	<0.50	<0.50	<0.50	<0.50	<0.50	1.39	7.24
11/13/2008	--		248.62	4.5	24.5	12.08	--	236.54	--	--	--	--	--	--	--	--
<b>2/23/2009</b>	<b>--</b>		<b>248.62</b>	<b>4.5</b>	<b>24.5</b>	<b>7.95</b>	<b>--</b>	<b>240.67</b>	<b>--</b>	<b>--</b>	<b>--</b>	<b>--</b>	<b>--</b>	<b>--</b>	<b>--</b>	<b>--</b>
<b>MW-5</b>																
3/15/1995	--		244.82	5.0	24.5	11.99	--	232.83	21,000	870	22	1,600	1,900	--	--	--
5/30/1995	--		244.82	5.0	24.5	12.97	--	231.85	17,000	2,100	250	1,000	520	--	--	--
9/1/1995	--		244.82	5.0	24.5	14.03	--	230.79	19,000	1,500	25	1,600	880	8,300	--	--
11/13/1995	--		244.82	5.0	24.5	13.65	--	231.17	21,000	1,300	22	1,400	630	--	--	--
2/23/1996	--		244.82	5.0	24.5	11.93	--	232.89	27,000	1,300	<50	1,600	1,500	730	--	--
5/10/1996	--		244.82	5.0	24.5	13.05	--	231.77	17,000	460	21	760	480	1,000	--	--
8/9/1996	--		244.82	5.0	24.5	13.22	--	231.60	16,000	420	14	870	390	1,500	--	--
11/8/1996	--	e	244.82	5.0	24.5	--	--	--	--	--	--	--	--	--	--	--
3/21/1997	--		244.82	5.0	24.5	13.24	--	231.58	18,000	110	<50	730	1,500	1,800	--	--
5/27/1997	--		244.82	5.0	24.5	13.10	--	231.72	21,000	86	<20	810	610	1,700	--	--
8/5/1997	--		244.82	5.0	24.5	13.14	--	231.68	340	2.2	<0.5	15	8.8	39	--	--
10/29/1997	--		244.82	5.0	24.5	13.03	--	231.79	19,000	130	<20	1,400	620	1,700	--	--
2/25/1998	--		244.82	5.0	24.5	11.33	--	233.49	8,500	19	13	190	100	170	--	--
5/12/1998	--		244.82	5.0	24.5	12.81	--	232.01	10,000	34	<10	390	220	610	--	--
7/28/1998	--		244.82	5.0	24.5	13.12	--	231.70	15,000	68	<10	690	620	1,000	--	--
10/27/1998	--		244.82	5.0	24.5	12.90	--	231.92	15,000	60	<10	770	400	890	--	--
2/8/1999	--		244.82	5.0	24.5	11.08	--	233.74	8,200	23	<10	290	120	<60	--	--
6/1/1999	NP		244.82	5.0	24.5	12.95	--	231.87	11,000	33	3.3	340	180	580	1	6.49

**Table 1. Summary of Ground-Water Monitoring Data: Relative Water Elevations and Laboratory Analyses**  
**Station #6002, 6235 Seminary Ave., Oakland, CA**

Well and Sample Date	P/NP	Comments	TOC (feet msl)	Top of Screen (ft bgs)	Bottom of Screen (ft bgs)	DTW (feet bgs)	Product Thickness (feet)	Water Level Elevation (feet msl)	Concentrations in (µg/L)						DO (mg/L)	pH
									GRO/TPHg	Benzene	Toluene	Ethyl-Benzene	Total Xylenes	MtBE		
<b>MW-5 Cont.</b>																
8/25/1999	NP		244.82	5.0	24.5	12.99	--	231.83	9,200	26	14	420	270	1,100	0.37	7.78
10/29/1999	NP		244.82	5.0	24.5	13.10	--	231.72	11,000	19	9.8	260	150	590	1.27	6.2
2/16/2000	NP		244.82	5.0	24.5	8.21	--	236.61	12,000	8.1	10	340	160	130	1.42	--
6/23/2000	NP		244.82	5.0	24.5	12.90	--	231.92	9,680	38	<20.0	212	114	930	1.4	--
8/17/2000	NP		244.82	5.0	24.5	13.00	--	231.82	10,500	15	7.98	223	118	430	0.68	--
11/10/2000	NP		244.82	5.0	24.5	12.50	--	232.32	7,030	19.7	<10.0	190	43.6	445	1.27	--
2/12/2001	NP		244.82	5.0	24.5	12.81	--	232.01	8,840	33.9	<10.0	186	56.4	352	0.4	--
4/13/2001	NP		244.82	5.0	24.5	11.31	--	233.51	9,020	54.2	43.3	137	96	297	--	--
7/18/2001	NP		244.82	5.0	24.5	11.59	--	233.23	13,000	19	10	110	49	230	--	--
10/1/2001	NP		244.82	5.0	24.5	11.84	--	232.98	8,500	6.9	<1.0	87	27	220	--	--
1/14/2002	NP		244.82	5.0	24.5	10.75	--	234.07	9,500	<20	<20	140	22	<200	--	--
4/3/2002	NP		244.82	5.0	24.5	12.50	--	232.32	2,400	21	<5.0	91	8.5	130	--	--
4/3/2002	NP	f	244.82	5.0	24.5	--	--	--	2,700	24	5.1	92	8.5	130	--	--
8/8/2002	NP		244.82	5.0	24.5	12.83	--	231.99	2,000	<20	<20	48	<20	520	0.8	6.9
11/27/2002	NP		244.82	5.0	24.5	12.79	--	232.03	2,200	<10	<10	33	<10	150	0.8	6.4
2/10/2003	NP		244.82	5.0	24.5	12.62	--	232.20	2,600	<2.5	<2.5	47	4.2	100	0.7	6.6
6/3/2003	--		244.82	5.0	24.5	12.41	--	232.41	2,400	<5.0	<5.0	26	<5.0	160	1.8	6.3
8/14/2003	--	e	244.82	5.0	24.5	--	--	--	--	--	--	--	--	--	--	--
11/13/2003	NP		244.82	5.0	24.5	12.49	--	232.33	1,900	<5.0	<5.0	13	<5.0	90	0.9	6.4
02/13/2004	NP		250.55	5.0	24.5	12.38	--	238.17	1,400	1.4	1.9	23	3.6	90	1.1	62.8
05/05/2004	NP		250.55	5.0	24.5	12.68	--	237.87	5,800	<2.5	<2.5	13	<2.5	130	1.1	6.3
08/30/2004	P		250.55	5.0	24.5	12.96	--	237.59	4,100	<2.5	<2.5	<2.5	<2.5	85	--	6.4
11/08/2004	NP		250.55	5.0	24.5	12.10	--	238.45	3,300	14	1.9	17	6.1	69	1.05	6.0
02/07/2005	NP		250.55	5.0	24.5	12.02	--	238.53	3,500	<1.0	1.1	16	2.6	15	0.95	6.5
05/09/2005	NP	j	250.55	5.0	24.5	11.94	--	238.61	3,400	<1.0	1.7	12	2.2	19	2.2	6.7
08/11/2005	NP		250.55	5.0	24.5	12.77	--	237.78	5,700	<2.5	<2.5	13	<2.5	51	0.7	6.0
12/02/2005	NP		250.55	5.0	24.5	11.83	--	238.72	3,900	<2.5	<2.5	15	8.3	13	1.41	6.9
02/15/2006	NP		250.55	5.0	24.5	10.77	--	239.78	790	<0.50	<0.50	1.2	<0.50	<0.50	1.2	6.9
5/19/2006	NP		250.55	5.0	24.5	12.29	--	238.26	4,100	0.97	1.3	3.9	1.8	15	0.98	6.5
8/25/2006	P		250.55	5.0	24.5	12.62	--	237.93	3,700	<2.5	<2.5	4.0	<2.5	17	1.15	6.2
11/2/2006	P		250.55	5.0	24.5	12.90	--	237.65	5,700	<1.0	1.5	4.3	1.7	18	1.86	6.67

**Table 1. Summary of Ground-Water Monitoring Data: Relative Water Elevations and Laboratory Analyses**

**Station #6002, 6235 Seminary Ave., Oakland, CA**

Well and Sample Date	P/NP	Comments	TOC (feet msl)	Top of Screen (ft bgs)	Bottom of Screen (ft bgs)	DTW (feet bgs)	Product Thickness (feet)	Water Level Elevation (feet msl)	Concentrations in (µg/L)						DO (mg/L)	pH
									GRO/TPHg	Benzene	Toluene	Ethyl-Benzene	Total Xylenes	MtBE		
<b>MW-5 Cont.</b>																
2/6/2007	NP		250.55	5.0	24.5	12.37	--	238.18	4,800	<1.0	<1.0	5.2	1.3	13	0.96	6.99
5/9/2007	NP		250.55	5.0	24.5	12.50	--	238.05	4,400	<1.0	<1.0	4.9	1.5	31	1.42	6.89
8/8/2007	NP		250.55	5.0	24.5	12.88	--	237.67	4,100	<1.0	<1.0	4.1	1.3	11	1.16	6.44
11/14/2007	NP		250.55	5.0	24.5	12.30	--	238.25	4,700	<1.0	<1.0	7.3	1.8	11	1.22	6.77
2/28/2008	NP		250.55	5.0	24.5	11.37	--	239.18	4,100	<2.5	<2.5	<2.5	<2.5	<2.5	1.15	6.67
5/23/2008	NP		250.55	5.0	24.5	11.68	--	238.87	4,700	<0.50	0.87	5.6	1.2	17	1.28	6.57
8/21/2008	NP		250.55	5.0	24.5	12.42	--	238.13	4,700	<0.50	0.60	3.6	1.4	8.7	1.24	6.78
11/13/2008	NP		250.55	5.0	24.5	12.32	--	238.23	7,400	<0.50	0.63	6.3	1.4	5.6	1.18	6.67
<b>2/23/2009</b>	<b>NP</b>	<b>1</b>	<b>250.55</b>	<b>5.0</b>	<b>24.5</b>	<b>10.50</b>	<b>--</b>	<b>240.05</b>	<b>4,100</b>	<b>&lt;0.50</b>	<b>&lt;0.50</b>	<b>1.9</b>	<b>1.1</b>	<b>3.2</b>	<b>1.30</b>	<b>6.17</b>
<b>MW-6</b>																
6/29/1995	--		--	17.0	31.5	6.63	--	--	<50	<0.5	<0.5	<0.5	<0.5	--	--	--
9/1/1995	--		--	17.0	31.5	--	--	--	--	--	--	--	--	--	--	--
11/13/1995	--		--	17.0	31.5	7.70	--	--	<50	<0.5	<0.5	<0.5	<0.5	<3	--	--
2/23/1996	--		--	17.0	31.5	9.82	--	--	<50	<0.5	0.8	<0.5	0.6	<3	--	--
5/10/1996	--		--	17.0	31.5	15.25	--	--	--	--	--	--	--	--	--	--
8/9/1996	--		252.20	17.0	31.5	11.11	--	241.09	--	--	--	--	--	--	--	--
11/8/1996	--		252.20	17.0	31.5	9.31	--	242.89	--	--	--	--	--	--	--	--
3/21/1997	--		252.20	17.0	31.5	9.40	--	242.80	<50	<0.5	<0.5	<0.5	<0.5	<3	--	--
5/27/1997	--		252.20	17.0	31.5	7.08	--	245.12	--	--	--	--	--	--	--	--
8/5/1997	--		252.20	17.0	31.5	7.12	--	245.08	--	--	--	--	--	--	--	--
10/29/1997	--		252.20	17.0	31.5	7.42	--	244.78	<50	<0.5	<0.5	<0.5	<0.5	<3	--	--
2/25/1998	--		252.20	17.0	31.5	10.35	--	241.85	<50	<0.5	<0.5	<0.5	<0.5	<3	--	--
5/12/1998	--		252.20	17.0	31.5	15.83	--	236.37	--	--	--	--	--	--	--	--
7/28/1998	--		252.20	17.0	31.5	11.84	--	240.36	--	--	--	--	--	--	--	--
10/27/1998	--		252.20	17.0	31.5	9.73	--	242.47	--	--	--	--	--	--	--	--
2/8/1999	--		252.20	17.0	31.5	8.10	--	244.10	<50	<0.5	<0.5	<0.5	<0.5	<3	--	--
6/1/1999	--		252.20	17.0	31.5	17.84	--	234.36	--	--	--	--	--	--	--	--
8/25/1999	--		252.20	17.0	31.5	11.00	--	241.20	--	--	--	--	--	--	0.77	--
10/29/1999	--		252.20	17.0	31.5	9.03	--	243.17	--	--	--	--	--	--	3.42	--
2/16/2000	P		252.20	17.0	31.5	7.71	--	244.49	<50	<0.5	<0.5	<0.5	<1	<3	2.42	--

**Table 1. Summary of Ground-Water Monitoring Data: Relative Water Elevations and Laboratory Analyses**

**Station #6002, 6235 Seminary Ave., Oakland, CA**

Well and Sample Date	P/NP	Comments	TOC (feet msl)	Top of Screen (ft bgs)	Bottom of Screen (ft bgs)	DTW (feet bgs)	Product Thickness (feet)	Water Level Elevation (feet msl)	Concentrations in (µg/L)						DO (mg/L)	pH
									GRO/TPHg	Benzene	Toluene	Ethyl-Benzene	Total Xylenes	MtBE		
<b>MW-6 Cont.</b>																
6/23/2000	--		252.20	17.0	31.5	6.69	--	245.51	--	--	--	--	--	--	2.3	--
8/17/2000	--		252.20	17.0	31.5	6.95	--	245.25	--	--	--	--	--	--	2.51	--
11/10/2000	--		252.20	17.0	31.5	11.79	--	240.41	--	--	--	--	--	--	--	--
2/12/2001	--	f	--	17.0	31.5	--	--	--	--	--	--	--	--	--	--	--
2/12/2001	P		252.20	17.0	31.5	7.35	--	244.85	<50	<0.50	<0.50	<0.50	<0.50	<2.5	1.66	7.77
4/13/2001	--		252.20	17.0	31.5	10.52	--	241.68	--	--	--	--	--	--	--	--
7/18/2001	--		252.20	17.0	31.5	11.03	--	241.17	--	--	--	--	--	--	--	--
10/1/2001	--		252.20	17.0	31.5	11.31	--	240.89	--	--	--	--	--	--	--	--
1/14/2002	P		252.20	17.0	31.5	9.87	--	242.33	<50	<0.50	<0.50	<0.50	<0.50	<5.0	--	--
4/3/2002	--		252.20	17.0	31.5	12.19	--	240.01	--	--	--	--	--	--	--	--
8/8/2002	--		252.20	17.0	31.5	7.04	--	245.16	--	--	--	--	--	--	--	--
11/27/2002	--		252.20	17.0	31.5	6.85	--	245.35	--	--	--	--	--	--	--	--
2/10/2003	NP		252.20	17.0	31.5	6.74	--	245.46	<50	<0.50	<0.50	<0.50	<0.50	<0.50	1.1	7.4
6/3/2003	--		252.20	17.0	31.5	14.35	--	237.85	--	--	--	--	--	--	--	--
8/14/2003	--		252.20	17.0	31.5	10.74	--	241.46	--	--	--	--	--	--	--	--
11/13/2003	--		252.20	17.0	31.5	10.68	--	241.52	--	--	--	--	--	--	--	--
02/13/2004	--		257.94	17.0	31.5	7.38	--	250.56	--	--	--	--	--	--	--	--
05/05/2004	--		257.94	17.0	31.5	7.43	--	250.51	--	--	--	--	--	--	--	--
08/30/2004	P		257.94	17.0	31.5	7.39	--	250.55	<50	<0.50	<0.50	<0.50	<0.50	<0.50	2.5	7.0
11/08/2004	--		257.94	17.0	31.5	15.57	--	242.37	--	--	--	--	--	--	--	--
02/07/2005	--		257.94	17.0	31.5	15.26	--	242.68	--	--	--	--	--	--	--	--
05/09/2005	--		257.94	17.0	31.5	11.31	--	246.63	--	--	--	--	--	--	--	--
08/11/2005	P		257.94	17.0	31.5	9.80	--	248.14	<50	<0.50	<0.50	<0.50	<0.50	<0.50	2.4	7.1
12/02/2005	--		257.94	17.0	31.5	14.55	--	243.39	--	--	--	--	--	--	--	--
02/15/2006	--		257.94	17.0	31.5	10.33	--	247.61	--	--	--	--	--	--	--	--
5/19/2006	--		257.94	17.0	31.5	6.50	--	251.44	--	--	--	--	--	--	--	--
8/25/2006	P		257.94	17.0	31.5	6.75	--	251.19	<50	<0.50	<0.50	<0.50	<0.50	<0.50	1.90	6.6
11/2/2006	--		257.94	17.0	31.5	7.15	--	250.79	--	--	--	--	--	--	--	--
2/6/2007	--		257.94	17.0	31.5	6.93	--	251.01	--	--	--	--	--	--	--	--
5/9/2007	--		257.94	17.0	31.5	7.03	--	250.91	--	--	--	--	--	--	--	--
8/8/2007	P		257.94	17.0	31.5	7.01	--	250.93	<50	<0.50	<0.50	<0.50	<0.50	<0.50	2.64	7.12

Table 1. Summary of Ground-Water Monitoring Data: Relative Water Elevations and Laboratory Analyses

Station #6002, 6235 Seminary Ave., Oakland, CA

Well and Sample Date	P/NP	Comments	TOC (feet msl)	Top of Screen (ft bgs)	Bottom of Screen (ft bgs)	DTW (feet bgs)	Product Thickness (feet)	Water Level Elevation (feet msl)	Concentrations in (µg/L)						DO (mg/L)	pH
									GRO/TPHg	Benzene	Toluene	Ethyl-Benzene	Total Xylenes	MtBE		
<b>MW-6 Cont.</b>																
11/14/2007	--		257.94	17.0	31.5	7.25	--	250.69	--	--	--	--	--	--	--	--
2/28/2008	--		257.94	17.0	31.5	6.85	--	251.09	--	--	--	--	--	--	--	--
5/23/2008	--		257.94	17.0	31.5	7.15	--	250.79	--	--	--	--	--	--	--	--
8/21/2008	P		257.94	17.0	31.5	7.17	--	250.77	<50	<0.50	<0.50	<0.50	<0.50	<0.50	1.38	7.27
11/13/2008	--		257.94	17.0	31.5	12.30	--	245.64	--	--	--	--	--	--	--	--
<b>2/23/2009</b>	<b>--</b>		<b>257.94</b>	<b>17.0</b>	<b>31.5</b>	<b>7.61</b>	<b>--</b>	<b>250.33</b>	<b>--</b>	<b>--</b>	<b>--</b>	<b>--</b>	<b>--</b>	<b>--</b>	<b>--</b>	<b>--</b>
<b>MW-7</b>																
8/9/1996	--	g	235.95	8.5	13.5	--	--	--	--	--	--	--	--	--	--	--
11/8/1996	--	g	235.95	8.5	13.5	--	--	--	--	--	--	--	--	--	--	--
1/27/1997	--		235.95	8.5	13.5	--	--	--	2,900	29	<5	<5	580	220	--	--
3/21/1997	--		235.95	8.5	13.5	7.13	--	228.82	590	3.5	<0.5	<0.5	1.3	90	--	--
5/27/1997	--		235.95	8.5	13.5	9.02	--	226.93	<50	<0.5	<0.5	<0.5	<0.5	<3	--	--
8/5/1997	--		235.95	8.5	13.5	12.33	--	223.62	110	0.5	<0.5	<0.5	0.8	81	--	--
10/29/1997	--	g	235.95	8.5	13.5	--	--	--	--	--	--	--	--	--	--	--
2/25/1998	--		235.95	8.5	13.5	8.04	--	227.91	<50	<0.5	0.6	<0.5	0.7	<3	--	--
5/12/1998	--		235.95	8.5	13.5	8.88	--	227.07	<50	<0.5	<0.5	<0.5	<0.5	<3	--	--
7/28/1998	--		235.95	8.5	13.5	10.50	--	225.45	<50	<0.5	<0.5	<0.5	<0.5	<3	--	--
10/27/1998	--		235.95	8.5	13.5	8.75	--	227.20	<50	<0.5	<0.5	<0.5	<0.5	<3	--	--
2/8/1999	--		235.95	8.5	13.5	9.35	--	226.60	<50	<0.5	<0.5	<0.5	<0.5	<3	--	--
6/1/1999	NP		235.95	8.5	13.5	9.85	--	226.10	250	<0.5	0.6	<0.5	1.6	18	1	6.43
8/25/1999	NP		235.95	8.5	13.5	11.31	--	224.64	119	<0.5	5.7	<0.5	<0.5	11	0.41	8.28
10/29/1999	NP		235.95	8.5	13.5	9.08	--	226.87	<50	<0.5	<0.5	<0.5	<1	<3	1.29	5.82
2/25/2000	NP		235.95	8.5	13.5	8.02	--	227.93	<50	<0.5	<0.5	<0.5	<1	38	2.1	--
6/23/2000	NP		235.95	8.5	13.5	10.68	--	225.27	<50	<0.50	<0.50	<0.50	<0.50	14.4	1.6	--
8/17/2000	NP		235.95	8.5	13.5	11.85	--	224.10	70	<0.500	0.678	<0.500	1.07	14.2	1.59	--
11/10/2000	NP		235.95	8.5	13.5	9.62	--	226.33	<50	<0.50	<0.50	<0.50	<0.50	<2.5	1.09	--
2/12/2001	NP		235.95	8.5	13.5	12.10	--	223.85	<50	<0.50	<0.50	<0.50	<0.50	<2.5	0.84	--
4/13/2001	P		235.95	8.5	13.5	7.95	--	228.00	<50	<0.50	<0.50	<0.50	<0.50	<2.5	--	--
7/18/2001	P		235.95	8.5	13.5	8.20	--	227.75	<50	<0.50	<0.50	<0.50	<0.50	<2.5	--	--
10/1/2001	NP		235.95	8.5	13.5	8.59	--	227.36	<50	<0.50	<0.50	<0.50	<0.50	<2.5	--	--



Table 1. Summary of Ground-Water Monitoring Data: Relative Water Elevations and Laboratory Analyses

Station #6002, 6235 Seminary Ave., Oakland, CA

Well and Sample Date	P/NP	Comments	TOC (feet msl)	Top of Screen (ft bgs)	Bottom of Screen (ft bgs)	DTW (feet bgs)	Product Thickness (feet)	Water Level Elevation (feet msl)	Concentrations in (µg/L)						DO (mg/L)	pH
									GRO/TPHg	Benzene	Toluene	Ethyl-Benzene	Total Xylenes	MtBE		
<b>MW-7 Cont.</b>																
1/14/2002	P		235.95	8.5	13.5	6.93	--	229.02	<50	<0.50	<0.50	<0.50	<0.50	<5.0	--	--
4/3/2002	P		235.95	8.5	13.5	8.31	--	227.64	<50	<0.50	<0.50	<0.50	<0.50	<2.5	--	--
8/8/2002	P	h	235.95	8.5	13.5	12.11	--	223.84	--	--	--	--	--	--	--	--
11/27/2002	NP	h	235.95	8.5	13.5	13.01	--	222.94	--	--	--	--	--	--	--	--
2/10/2003	NP		235.95	8.5	13.5	10.02	--	225.93	<50	<0.50	<0.50	<0.50	<0.50	<0.50	1.5	6.7
6/3/2003	NP		235.95	8.5	13.5	6.82	--	229.13	<50	<0.50	<0.50	<0.50	<0.50	<0.50	8.1	6.8
8/14/2003	P		235.95	8.5	13.5	8.16	--	227.79	<50	<0.50	<0.50	<0.50	<0.50	<0.50	2.8	6.7
11/13/2003	--		235.95	8.5	13.5	8.07	--	227.88	--	--	--	--	--	--	--	--
02/13/2004	--		241.64	8.5	13.5	7.62	--	234.02	--	--	--	--	--	--	--	--
05/05/2004	--		241.64	8.5	13.5	11.01	--	230.63	--	--	--	--	--	--	--	--
08/30/2004	--	h	241.64	8.5	13.5	13.27	--	228.37	--	--	--	--	--	--	--	--
11/08/2004	--		241.64	8.5	13.5	13.22	--	228.42	--	--	--	--	--	--	--	--
02/07/2005	--		241.64	8.5	13.5	13.07	--	228.57	--	--	--	--	--	--	--	--
05/09/2005	--		241.64	8.5	13.5	7.57	--	234.07	--	--	--	--	--	--	--	--
08/11/2005	NP		241.64	8.5	13.5	11.55	--	230.09	<50	<0.50	<0.50	<0.50	<0.50	<0.50	1.1	6.7
12/02/2005	--		241.64	8.5	13.5	13.12	--	228.52	--	--	--	--	--	--	--	--
02/15/2006	--		241.64	8.5	13.5	7.27	--	234.37	--	--	--	--	--	--	--	--
5/19/2006	--		241.64	8.5	13.5	7.84	--	233.80	--	--	--	--	--	--	--	--
8/25/2006	P		241.64	8.5	13.5	12.19	--	229.45	<50	<0.50	<0.50	<0.50	<0.50	<0.50	3.33	6.2
11/2/2006	--		241.64	8.5	13.5	13.15	--	228.49	--	--	--	--	--	--	--	--
2/6/2007	--		241.64	8.5	13.5	11.12	--	230.52	--	--	--	--	--	--	--	--
5/9/2007	--		241.64	8.5	13.5	11.60	--	230.04	--	--	--	--	--	--	--	--
8/8/2007	--	g	241.64	8.5	13.5	--	--	--	--	--	--	--	--	--	--	--
11/14/2007	--	g	241.64	8.5	13.5	--	--	--	--	--	--	--	--	--	--	--
2/28/2008	--		241.64	8.5	13.5	7.70	--	233.94	--	--	--	--	--	--	--	--
5/23/2008	--		241.64	8.5	13.5	5.15	--	236.49	--	--	--	--	--	--	--	--
8/21/2008	--	g	241.64	8.5	13.5	--	--	--	--	--	--	--	--	--	--	--
11/13/2008	--		241.64	8.5	13.5	12.98	--	228.66	--	--	--	--	--	--	--	--
<b>2/23/2009</b>	<b>--</b>		<b>241.64</b>	<b>8.5</b>	<b>13.5</b>	<b>7.03</b>	<b>--</b>	<b>234.61</b>	<b>--</b>	<b>--</b>	<b>--</b>	<b>--</b>	<b>--</b>	<b>--</b>	<b>--</b>	<b>--</b>
<b>MW-8</b>																

**Table 1. Summary of Ground-Water Monitoring Data: Relative Water Elevations and Laboratory Analyses**

**Station #6002, 6235 Seminary Ave., Oakland, CA**

Well and Sample Date	P/NP	Comments	TOC (feet msl)	Top of Screen (ft bgs)	Bottom of Screen (ft bgs)	DTW (feet bgs)	Product Thickness (feet)	Water Level Elevation (feet msl)	Concentrations in (µg/L)						DO (mg/L)	pH
									GRO/TPHg	Benzene	Toluene	Ethyl-Benzene	Total Xylenes	MtBE		
<b>MW-8 Cont.</b>																
8/9/1996	--		240.37	5.5	14.0	9.41	--	230.96	<50	<0.5	<0.5	<0.5	<0.5	<3	--	--
11/8/1996	--		240.37	5.5	14.0	9.19	--	231.18	<50	<0.5	<0.5	<0.5	<0.5	<3	--	--
3/21/1997	--		240.37	5.5	14.0	8.55	--	231.82	<50	<0.5	<0.5	<0.5	<0.5	<3	--	--
5/27/1997	--		240.37	5.5	14.0	11.06	--	229.31	91	0.6	<0.5	<0.5	0.6	66	--	--
8/5/1997	--		240.37	5.5	14.0	9.32	--	231.05	<50	<0.5	<0.5	<0.5	<0.5	<3	--	--
10/29/1997	--		240.37	5.5	14.0	9.35	--	231.02	<50	<0.5	<0.5	<0.5	<0.5	<3	--	--
2/25/1998	--		240.37	5.5	14.0	7.08	--	233.29	<50	<0.5	<0.5	<0.5	<0.5	<3	--	--
5/12/1998	--		240.37	5.5	14.0	8.61	--	231.76	<50	<0.5	<0.5	<0.5	<0.5	<3	--	--
7/28/1998	--		240.37	5.5	14.0	9.63	--	230.74	<50	<0.5	<0.5	<0.5	<0.5	4	--	--
10/27/1998	--		240.37	5.5	14.0	9.30	--	231.07	<50	<0.5	<0.5	<0.5	<0.5	<3	--	--
2/8/1999	--		240.37	5.5	14.0	5.56	--	234.81	<50	<0.5	<0.5	<0.5	<0.5	<3	--	--
6/1/1999	--	e	240.37	5.5	14.0	--	--	--	--	--	--	--	--	--	--	--
8/25/1999	--	e	240.37	5.5	14.0	--	--	--	--	--	--	--	--	--	--	--
10/29/1999	--	e	240.37	5.5	14.0	--	--	--	--	--	--	--	--	--	--	--
2/16/2000	--	e	240.37	5.5	14.0	--	--	--	--	--	--	--	--	--	--	--
6/23/2000	NP		240.37	5.5	14.0	9.45	--	230.92	<50	<0.50	<0.50	<0.500	<0.50	<2.5	1.9	--
8/17/2000	NP		240.37	5.5	14.0	6.40	--	233.97	<50	<0.50	<0.50	<0.50	<0.50	<2.5	2.56	--
11/10/2000	--	f	240.37	5.5	14.0	--	--	--	<50	<0.50	<0.50	<0.50	<0.50	<2.5	--	--
11/10/2000	NP		240.37	5.5	14.0	6.25	--	234.12	<50	<0.50	<0.50	<0.50	<0.50	<2.5	1.93	--
2/12/2001	NP		240.37	5.5	14.0	8.11	--	232.26	<50	<0.50	<0.50	<0.50	<0.50	<2.5	1.65	--
4/13/2001	P		240.37	5.5	14.0	5.19	--	235.18	<50	<0.50	<0.50	<0.50	<0.50	<2.5	--	--
7/18/2001	NP		240.37	5.5	14.0	5.55	--	234.82	<50	<0.50	<0.50	<0.50	<0.50	<2.5	--	--
10/1/2001	NP		240.37	5.5	14.0	6.41	--	233.96	<50	<0.50	<0.50	<0.50	<0.50	<2.5	--	--
1/14/2002	P		240.37	5.5	14.0	5.07	--	235.30	<50	<0.50	<0.50	<0.50	<0.50	<5.0	--	--
4/3/2002	P		240.37	5.5	14.0	8.60	--	231.77	<50	<0.50	<0.50	<0.50	<0.50	<2.5	--	--
8/8/2002	P		240.37	5.5	14.0	9.58	--	230.79	<50	<0.50	<0.50	<0.50	<0.50	<2.5	1.7	7
11/27/2002	P		240.37	5.5	14.0	9.15	--	231.22	<50	<0.50	<0.50	<0.50	<0.50	<0.50	3.1	6.7
2/10/2003	P		240.37	5.5	14.0	8.55	--	231.82	<50	<0.50	<0.50	<0.50	<0.50	<0.50	1.3	6.6
6/3/2003	--		240.37	5.5	14.0	8.72	--	231.65	<50	<0.50	<0.50	<0.50	<0.50	<0.50	9.1	6.3
8/14/2003	--		240.37	5.5	14.0	9.52	--	230.85	<50	<0.50	<0.50	<0.50	<0.50	<0.50	5.5	6.4
11/13/2003	--		240.37	5.5	14.0	9.45	--	230.92	--	--	--	--	--	--	--	--

**Table 1. Summary of Ground-Water Monitoring Data: Relative Water Elevations and Laboratory Analyses**

**Station #6002, 6235 Seminary Ave., Oakland, CA**

Well and Sample Date	P/NP	Comments	TOC (feet msl)	Top of Screen (ft bgs)	Bottom of Screen (ft bgs)	DTW (feet bgs)	Product Thickness (feet)	Water Level Elevation (feet msl)	Concentrations in (µg/L)						DO (mg/L)	pH
									GRO/TPHg	Benzene	Toluene	Ethyl-Benzene	Total Xylenes	MtBE		
<b>MW-8 Cont.</b>																
02/13/2004	--		246.09	5.5	14.0	8.38	--	237.71	--	--	--	--	--	--	--	--
05/05/2004	--		246.09	5.5	14.0	9.30	--	236.79	--	--	--	--	--	--	--	--
08/30/2004	P		246.09	5.5	14.0	9.69	--	236.40	<50	<0.50	<0.50	<0.50	0.75	<0.50	5.1	6.5
11/08/2004	--		246.09	5.5	14.0	8.34	--	237.75	--	--	--	--	--	--	--	--
02/07/2005	--		246.09	5.5	14.0	8.23	--	237.86	--	--	--	--	--	--	--	--
05/09/2005	--		246.09	5.5	14.0	7.07	--	239.02	--	--	--	--	--	--	--	--
08/11/2005	--	e	246.09	5.5	14.0	--	--	--	--	--	--	--	--	--	--	--
12/02/2005	--		246.09	5.5	14.0	8.15	--	237.94	--	--	--	--	--	--	--	--
02/15/2006	--	e	246.09	5.5	14.0	--	--	--	--	--	--	--	--	--	--	--
5/19/2006	--		246.09	5.5	14.0	8.48	--	237.61	--	--	--	--	--	--	--	--
8/25/2006	P		246.09	5.5	14.0	9.45	--	236.64	<50	<0.50	<0.50	<0.50	<0.50	<0.50	2.27	6.0
11/2/2006	--		--	5.5	14.0	--	--	--	--	--	--	--	--	--	--	--
2/6/2007	--		246.09	5.5	14.0	--	--	--	--	--	--	--	--	--	--	--
5/9/2007	--	e	246.09	5.5	14.0	--	--	--	--	--	--	--	--	--	--	--
8/8/2007	--	e	246.09	5.5	14.0	--	--	--	--	--	--	--	--	--	--	--
11/14/2007	--		246.09	5.5	14.0	8.78	--	237.31	--	--	--	--	--	--	--	--
2/28/2008	--		246.09	5.5	14.0	7.77	--	238.32	--	--	--	--	--	--	--	--
5/23/2008	--		246.09	5.5	14.0	8.30	--	237.79	--	--	--	--	--	--	--	--
8/21/2008	--	e	246.09	5.5	14.0	--	--	--	--	--	--	--	--	--	--	--
11/13/2008	--	e	246.09	5.5	14.0	--	--	--	--	--	--	--	--	--	--	--
<b>2/23/2009</b>	--	<b>e</b>	<b>246.09</b>	<b>5.5</b>	<b>14.0</b>	--	--	--	--	--	--	--	--	--	--	--
<b>VW-1</b>																
2/23/1996	--		--	6.0	14.0	5.29	--	--	21,000	490	57	520	1,500	240	--	--
5/10/1996	--		--	6.0	14.0	6.80	--	--	3,700	61	<5	100	50	200	--	--
8/9/1996	--		--	6.0	14.0	7.03	--	--	970	2.7	<2.5	2.7	3.7	180	--	--
11/8/1996	--	e	--	6.0	14.0	--	--	--	--	--	--	--	--	--	--	--
3/21/1997	--		--	6.0	14.0	7.51	--	--	640	<4	<1	1	3	194	--	--
5/27/1997	--		--	6.0	14.0	7.51	--	--	--	--	--	--	--	--	--	--
8/5/1997	--		--	6.0	14.0	7.51	--	--	630	<1	<1	3	2	120	--	--
10/29/1997	--		--	6.0	14.0	7.53	--	--	600	<0.5	<0.5	<0.5	1.6	84	--	--

Table 1. Summary of Ground-Water Monitoring Data: Relative Water Elevations and Laboratory Analyses

Station #6002, 6235 Seminary Ave., Oakland, CA

Well and Sample Date	P/NP	Comments	TOC (feet msl)	Top of Screen (ft bgs)	Bottom of Screen (ft bgs)	DTW (feet bgs)	Product Thickness (feet)	Water Level Elevation (feet msl)	Concentrations in (µg/L)						DO (mg/L)	pH
									GRO/TPHg	Benzene	Toluene	Ethyl-Benzene	Total Xylenes	MtBE		
<b>VW-1 Cont.</b>																
2/25/1998	--		--	6.0	14.0	6.77	--	--	230	<4	<0.7	1.2	0.5	27	--	--
5/12/1998	--		--	6.0	14.0	7.43	--	--	340	<0.5	0.5	2.3	0.8	29	--	--
7/28/1998	--		--	6.0	14.0	7.00	--	--	240	<0.5	<0.5	<0.5	1.1	54	--	--
10/27/1998	--		--	6.0	14.0	7.52	--	--	230	<0.5	<0.5	<0.5	<0.5	65	--	--
2/8/1999	--	c	--	6.0	14.0	7.05	--	--	<50	<0.5	<0.5	<0.5	<0.5	<3/36	--	--
6/1/1999	NP		--	6.0	14.0	7.55	--	--	180	<0.5	<0.5	<0.5	<0.5	23	1	6.36
8/25/1999	NP		--	6.0	14.0	7.66	--	--	130	<0.5	5.6	<0.5	<0.5	40	0.39	7.5
10/29/1999	NP		--	6.0	14.0	7.59	--	--	200	1	<0.5	0.6	1.6	36	0.89	5.65
2/16/2000	NP		--	6.0	14.0	7.03	--	--	210	<0.5	0.9	2.2	1.9	11	1.41	--
6/23/2000	NP		--	6.0	14.0	7.71	--	--	175	1.04	<0.500	<0.500	<0.500	14.4	1.9	--
8/17/2000	NP		--	6.0	14.0	7.75	--	--	180	<0.500	<0.500	0.622	0.76	23.7	0.63	--
11/10/2000	NP		--	6.0	14.0	6.83	--	--	157	0.955	<0.500	0.973	<0.500	32.5	1.03	--
2/12/2001	NP		--	6.0	14.0	7.85	--	--	273	0.627	<0.500	<0.500	0.507	9.19	0.47	--
4/13/2001	P		--	6.0	14.0	5.11	--	--	213	<0.500	<0.500	<0.500	<0.500	6.38	--	--
7/18/2001	P		--	6.0	14.0	5.39	--	--	270	<0.50	<0.50	<0.50	<0.50	20	--	--
10/1/2001	NP		--	6.0	14.0	6.50	--	--	200	<0.50	<0.50	<0.50	0.81	14	--	--
1/14/2002	P		--	6.0	14.0	5.04	--	--	110	<0.50	<0.50	<0.50	<0.50	6.4	--	--
4/3/2002	P		--	6.0	14.0	7.51	--	--	91	0.72	<0.50	<0.50	<0.50	12	--	--
8/8/2002	P		--	6.0	14.0	9.58	--	--	<50	<0.50	<0.50	<0.50	<0.50	33	0.6	6.3
11/27/2002	P		--	6.0	14.0	7.42	--	--	52	0.72	0.78	<0.50	<0.50	21	1	6.1
2/10/2003	NP		--	6.0	14.0	7.38	--	--	52	<0.50	<0.50	<0.50	<0.50	11	1.7	6.5
6/3/2003	--		--	6.0	14.0	7.30	--	--	71	<0.50	<0.50	<0.50	<0.50	13	3.3	6.3
8/14/2003	--		--	6.0	14.0	7.59	--	--	<50	<0.50	<0.50	<0.50	<0.50	18	0.3	6.1
11/13/2003	P		--	6.0	14.0	7.43	--	--	<50	<0.50	<0.50	<0.50	<0.50	13	0.6	6.1
02/13/2004	P		253.19	6.0	14.0	7.35	--	245.84	59	<0.50	<0.50	<0.50	0.56	8.0	1.0	6.0
05/05/2004	P		253.19	6.0	14.0	7.30	--	245.89	<50	0.71	<0.50	<0.50	0.60	11	0.1	6.4
08/30/2004	P		253.19	6.0	14.0	8.50	--	244.69	<50	<0.50	<0.50	<0.50	<0.50	24	0.2	6.2
11/08/2004	P		253.19	6.0	14.0	7.22	--	245.97	230	<0.50	<0.50	<0.50	0.75	27	0.65	5.1
02/07/2005	P		253.19	6.0	14.0	7.25	--	245.94	<50	<0.50	<0.50	<0.50	<0.50	5.1	1.57	5.9
05/09/2005	P		253.19	6.0	14.0	7.10	--	246.09	64	<0.50	<0.50	<0.50	<0.50	6.9	3.5	--
08/11/2005	P		253.19	6.0	14.0	7.89	--	245.30	<50	<0.50	<0.50	<0.50	<0.50	10	0.04	6.3

Table 1. Summary of Ground-Water Monitoring Data: Relative Water Elevations and Laboratory Analyses

Station #6002, 6235 Seminary Ave., Oakland, CA

Well and Sample Date	P/NP	Comments	TOC (feet msl)	Top of Screen (ft bgs)	Bottom of Screen (ft bgs)	DTW (feet bgs)	Product Thickness (feet)	Water Level Elevation (feet msl)	Concentrations in (µg/L)						DO (mg/L)	pH
									GRO/TPHg	Benzene	Toluene	Ethyl-Benzene	Total Xylenes	MtBE		
<b>VW-1 Cont.</b>																
12/02/2005	P		253.19	6.0	14.0	7.32	--	245.87	130	<0.50	<0.50	<0.50	0.57	9.0	1.85	6.6
02/15/2006	P		253.19	6.0	14.0	7.16	--	246.03	<50	<0.50	<0.50	<0.50	<0.50	2.8	0.9	6.2
5/19/2006	P		253.19	6.0	14.0	7.24	--	245.95	<50	0.71	<0.50	0.65	1.4	3.7	0.85	6.2
8/25/2006	P		253.19	6.0	14.0	7.48	--	245.71	50	<0.50	<0.50	<0.50	<0.50	8.3	0.49	6.2
11/2/2006	P		253.19	6.0	14.0	7.77	--	245.42	57	<0.50	<0.50	<0.50	<0.50	11	1.84	6.88
2/6/2007	NP		253.19	6.0	14.0	7.35	--	245.84	64	<0.50	<0.50	<0.50	<0.50	2.3	0.70	6.92
5/9/2007	NP		253.19	6.0	14.0	7.40	--	245.79	<50	<0.50	<0.50	<0.50	<0.50	3.2	1.16	6.72
8/8/2007	NP		253.19	6.0	14.0	7.85	--	245.34	87	<0.50	<0.50	<0.50	<0.50	1.9	1.46	7.07
11/14/2007	NP		253.19	6.0	14.0	7.52	--	245.67	79	<0.50	<0.50	<0.50	<0.50	3.7	1.49	6.47
2/28/2008	NP		253.19	6.0	14.0	7.22	--	245.97	88	<0.50	<0.50	<0.50	<0.50	0.86	1.36	6.51
5/23/2008	NP		253.19	6.0	14.0	7.40	--	245.79	<50	<0.50	<0.50	<0.50	<0.50	0.91	1.05	6.92
8/21/2008	NP		253.19	6.0	14.0	7.52	--	245.67	<50	<0.50	<0.50	<0.50	<0.50	1.4	1.09	6.99
11/13/2008	NP		253.19	6.0	14.0	7.52	--	245.67	<50	<0.50	<0.50	<0.50	<0.50	1.5	1.12	6.80
<b>2/23/2009</b>	<b>NP</b>		<b>253.19</b>	<b>6.0</b>	<b>14.0</b>	<b>6.85</b>	<b>--</b>	<b>246.34</b>	<b>&lt;50</b>	<b>&lt;0.50</b>	<b>&lt;0.50</b>	<b>&lt;0.50</b>	<b>&lt;0.50</b>	<b>0.84</b>	<b>1.11</b>	<b>5.56</b>
<b>VW-2</b>																
2/23/1996	--	i	--	--	--	6.92	--	--	--	--	--	--	--	--	--	--
8/8/2002	--	i	--	--	--	10.51	--	--	--	--	--	--	--	--	--	--
<b>VW-3</b>																
8/8/2002	--		--	5.5	14.5	8.85	--	--	<50	<0.50	<0.50	<0.50	<0.50	2.5	0.7	6.1
11/27/2002	--	i	--	5.5	14.5	8.80	--	--	--	--	--	--	--	--	--	--
2/10/2003	--	i	--	5.5	14.5	8.41	--	--	--	--	--	--	--	--	--	--
6/3/2003	--	i	--	5.5	14.5	8.71	--	--	--	--	--	--	--	--	--	--
8/14/2003	--	i	--	5.5	14.5	8.81	--	--	--	--	--	--	--	--	--	--
11/13/2003	--		--	5.5	14.5	8.75	--	--	--	--	--	--	--	--	--	--
02/13/2004	--		252.26	5.5	14.5	8.48	--	243.78	--	--	--	--	--	--	--	--
05/05/2004	--		252.26	5.5	14.5	8.85	--	243.41	--	--	--	--	--	--	--	--
08/30/2004	--		252.26	5.5	14.5	9.07	--	243.19	--	--	--	--	--	--	--	--
11/08/2004	--		252.26	5.5	14.5	8.32	--	243.94	--	--	--	--	--	--	--	--
02/07/2005	--		252.26	5.5	14.5	8.28	--	243.98	--	--	--	--	--	--	--	--

Table 1. Summary of Ground-Water Monitoring Data: Relative Water Elevations and Laboratory Analyses

Station #6002, 6235 Seminary Ave., Oakland, CA

Well and Sample Date	P/NP	Comments	TOC (feet msl)	Top of Screen (ft bgs)	Bottom of Screen (ft bgs)	DTW (feet bgs)	Product Thickness (feet)	Water Level Elevation (feet msl)	Concentrations in (µg/L)						DO (mg/L)	pH
									GRO/TPHg	Benzene	Toluene	Ethyl-Benzene	Total Xylenes	MtBE		
<b>VW-3 Cont.</b>																
05/09/2005	--		252.26	5.5	14.5	8.44	--	243.82	--	--	--	--	--	--	--	--
08/11/2005	--		252.26	5.5	14.5	8.96	--	243.30	--	--	--	--	--	--	--	--
12/02/2005	--		252.26	5.5	14.5	8.26	--	244.00	--	--	--	--	--	--	--	--
02/15/2006	--		252.26	5.5	14.5	7.61	--	244.65	--	--	--	--	--	--	--	--
5/19/2006	--		252.26	5.5	14.5	8.83	--	243.43	--	--	--	--	--	--	--	--
8/25/2006	--		252.26	5.5	14.5	8.95	--	243.31	--	--	--	--	--	--	--	--
11/2/2006	--		252.26	5.5	14.5	9.08	--	243.18	--	--	--	--	--	--	--	--
2/6/2007	--		252.26	5.5	14.5	8.61	--	243.65	--	--	--	--	--	--	--	--
5/9/2007	--		252.26	5.5	14.5	8.79	--	243.47	--	--	--	--	--	--	--	--
8/8/2007	--		252.26	5.5	14.5	9.10	--	243.16	--	--	--	--	--	--	--	--
11/14/2007	--		252.26	5.5	14.5	8.52	--	243.74	--	--	--	--	--	--	--	--
2/28/2008	--		252.26	5.5	14.5	8.27	--	243.99	--	--	--	--	--	--	--	--
5/23/2008	--		252.26	5.5	14.5	8.95	--	243.31	--	--	--	--	--	--	--	--
8/21/2008	--		252.26	5.5	14.5	9.06	--	243.20	--	--	--	--	--	--	--	--
11/13/2008	--		252.26	5.5	14.5	8.80	--	243.46	--	--	--	--	--	--	--	--
<b>2/23/2009</b>	<b>--</b>		<b>252.26</b>	<b>5.5</b>	<b>14.5</b>	<b>6.60</b>	<b>--</b>	<b>245.66</b>	<b>--</b>	<b>--</b>	<b>--</b>	<b>--</b>	<b>--</b>	<b>--</b>	<b>--</b>	<b>--</b>
<b>VW-4</b>																
5/10/1996	--		--	5.5	14.5	8.58	--	--	13,000	2,500	41	420	660	43,000	--	--
8/9/1996	--		--	5.5	14.5	11.70	--	--	<50	<0.5	<0.5	<0.5	<0.5	6,200	--	--
11/8/1996	--		--	5.5	14.5	9.38	--	--	7,800	510	7	180	370	21,000	--	--
3/21/1997	--		--	5.5	14.5	9.11	--	--	10,000	290	10	270	230	8,900	--	--
5/27/1997	--		--	5.5	14.5	9.34	--	--	--	--	--	--	--	--	--	--
8/5/1997	--		--	5.5	14.5	9.47	--	--	<10,000	180	<100	<100	110	12,000	--	--
10/29/1997	--		--	5.5	14.5	9.35	--	--	9,800	200	69	260	360	4,900	--	--
2/25/1998	--		--	5.5	14.5	7.08	--	--	<50	2.5	<0.5	<0.5	0.7	<3	--	--
5/12/1998	--		--	5.5	14.5	9.17	--	--	3,200	<20	22	29	52	2,100	--	--
7/28/1998	--		--	5.5	14.5	9.55	--	--	<10,000	<100	<100	<100	<100	5,100	--	--
10/27/1998	--		--	5.5	14.5	9.92	--	--	<50	<0.5	<0.5	<0.5	<0.5	<3	--	--
2/8/1999	--	c	--	5.5	14.5	7.50	--	--	<2,500	<25	<25	28	<25	2,400/3,100	--	--
6/1/1999	NP		--	5.5	14.5	9.87	--	--	2,100	2.5	1.1	2.5	15	3,300	2	6.69

Table 1. Summary of Ground-Water Monitoring Data: Relative Water Elevations and Laboratory Analyses

Station #6002, 6235 Seminary Ave., Oakland, CA

Well and Sample Date	P/NP	Comments	TOC (feet msl)	Top of Screen (ft bgs)	Bottom of Screen (ft bgs)	DTW (feet bgs)	Product Thickness (feet)	Water Level Elevation (feet msl)	Concentrations in (µg/L)						DO (mg/L)	pH
									GRO/TPHg	Benzene	Toluene	Ethyl-Benzene	Total Xylenes	MtBE		
VW-4 Cont.																
8/25/1999	NP		--	5.5	14.5	9.78	--	--	1,300	4.4	4.9	1.7	2.9	4,600	0.36	7.94
10/29/1999	NP		--	5.5	14.5	9.93	--	--	1,400	<0.5	1.8	1.6	3	4,200	1.18	6.64
2/16/2000	NP		--	5.5	14.5	7.45	--	--	1,800	<0.5	2.9	15	10	3,400	1.01	--
6/23/2000	NP		--	5.5	14.5	9.74	--	--	1,360	<2.00	2.26	<2.00	2.25	4,900	1.5	--
6/23/2000	--	f	--	5.5	14.5	--	--	--	1,260	<2.00	<2.00	<2.00	2.73	2,720	--	--
8/17/2000	NP		--	5.5	14.5	9.95	--	--	2,230	<10.0	<10.0	<10.0	<10.0	5,310	1.13	--
11/10/2000	NP		--	5.5	14.5	9.22	--	--	1,390	18.5	<5.00	<5.00	<5.00	8,840	1.25	--
2/12/2001	NP		--	5.5	14.5	8.99	--	--	1,400	9.42	<2.00	17.8	16.1	3,570	0.91	--
4/13/2001	NP		--	5.5	14.5	7.80	--	--	556	3.82	<1.25	<1.25	<1.25	2,450	--	--
7/18/2001	--	f	--	5.5	14.5	--	--	--	2,000	8.7	2.2	<2.0	<2.0	3,400	--	--
7/18/2001	NP		--	5.5	14.5	7.73	--	--	2,100	9.2	<2.0	<2.0	<2.0	3,700	--	--
10/1/2001	--	f	--	5.5	14.5	--	--	--	1,800	<10	<10	<10	<10	5,800	--	--
10/1/2001	NP		--	5.5	14.5	6.69	--	--	2,000	<10	<10	<10	13	5,900	--	--
1/14/2002	P		--	5.5	14.5	5.93	--	--	580	<2.0	<2.0	<2.0	<2.0	2,700	--	--
4/3/2002	NP		--	5.5	14.5	9.60	--	--	1,400	5.2	16	<5.0	9.6	2,200	--	--
8/8/2002	--	i	--	5.5	14.5	10.01	--	--	--	--	--	--	--	--	--	--
11/27/2002	P		--	5.5	14.5	10.30	--	--	<10,000	<100	<100	<100	<100	3,800	1.7	6.7
2/10/2003	NP		--	5.5	14.5	10.06	--	--	<5,000	<50	<50	<50	<50	2,500	1	6.8
6/3/2003	--		--	5.5	14.5	10.04	--	--	<1,000	<10	<10	<10	<10	440	1.9	6.6
8/14/2003	--		--	5.5	14.5	9.66	--	--	<500	<5.0	<5.0	<5.0	<5.0	170	0.8	6.7
11/13/2003	P		--	5.5	14.5	10.01	--	--	<500	<5.0	<5.0	<5.0	<5.0	130	1.7	6.4
02/13/2004	P		252.69	5.5	14.5	9.34	--	243.35	330	<2.5	<2.5	<2.5	3.0	210	2.0	6.6
05/05/2004	P		252.69	5.5	14.5	10.07	--	242.62	130	<1.0	<1.0	<1.0	<1.0	66	1.2	6.8
08/30/2004	P		252.69	5.5	14.5	10.32	--	242.37	<500	<5.0	<5.0	<5.0	<5.0	220	1.1	6.6
11/08/2004	P		252.69	5.5	14.5	9.35	--	243.34	480	<2.5	<2.5	<2.5	<2.5	140	1.1	6.0
02/07/2005	P		252.69	5.5	14.5	9.22	--	243.47	180	<0.50	<0.50	<0.50	<0.50	47	1.83	6.5
05/09/2005	P		252.69	5.5	14.5	9.78	--	242.91	120	0.63	<0.50	<0.50	<0.50	37	--	--
08/11/2005	P		252.69	5.5	14.5	10.11	--	242.58	74	<0.50	<0.50	<0.50	<0.50	15	0.7	6.7
12/02/2005	P		252.69	5.5	14.5	9.59	--	243.10	160	<1.0	<1.0	<1.0	<1.0	28	0.75	6.9
02/15/2006	P		252.69	5.5	14.5	8.56	--	244.13	64	<0.50	<0.50	<0.50	<0.50	11	0.9	6.9
5/19/2006	P		252.69	5.5	14.5	9.95	--	242.74	150	<0.50	<0.50	<0.50	1.2	16	0.76	6.7

**Table 1. Summary of Ground-Water Monitoring Data: Relative Water Elevations and Laboratory Analyses**

**Station #6002, 6235 Seminary Ave., Oakland, CA**

Well and Sample Date	P/NP	Comments	TOC (feet msl)	Top of Screen (ft bgs)	Bottom of Screen (ft bgs)	DTW (feet bgs)	Product Thickness (feet)	Water Level Elevation (feet msl)	Concentrations in (µg/L)						DO (mg/L)	pH
									GRO/TPHg	Benzene	Toluene	Ethyl-Benzene	Total Xylenes	MtBE		
<b>VW-4 Cont.</b>																
8/25/2006	P		252.69	5.5	14.5	10.03	--	242.66	140	<0.50	<0.50	<0.50	<0.50	17	1.14	6.7
11/2/2006	P		252.69	5.5	14.5	10.13	--	242.56	120	<0.50	<0.50	<0.50	<0.50	20	1.76	6.49
2/6/2007	NP		252.69	5.5	14.5	9.57	--	243.12	<50	<0.50	<0.50	<0.50	<0.50	1.6	0.98	6.89
5/9/2007	NP		252.69	5.5	14.5	9.75	--	242.94	110	<0.50	<0.50	<0.50	<0.50	21	0.76	6.94
8/8/2007	NP		252.69	5.5	14.5	10.13	--	242.56	140	<0.50	<0.50	<0.50	<0.50	5.4	0.88	6.81
11/14/2007	NP		252.69	5.5	14.5	9.81	--	242.88	150	<0.50	<0.50	<0.50	<0.50	6.4	1.17	6.67
2/28/2008	NP		252.69	5.5	14.5	9.00	--	243.69	<50	<0.50	<0.50	<0.50	<0.50	8.4	0.92	6.55
5/23/2008	NP		252.69	5.5	14.5	9.73	--	242.96	68	<1.0	<1.0	<1.0	<1.0	6.4	1.40	6.92
8/21/2008	NP		252.69	5.5	14.5	10.04	--	242.65	74	<2.5	<2.5	<2.5	<2.5	3.2	1.29	6.89
11/13/2008	NP		252.69	5.5	14.5	9.95	--	242.74	89	<2.0	<2.0	<2.0	<2.0	2.7	1.23	6.93
<b>2/23/2009</b>	<b>NP</b>	<b>1</b>	<b>252.69</b>	<b>5.5</b>	<b>14.5</b>	<b>7.35</b>	<b>--</b>	<b>245.34</b>	<b>290</b>	<b>0.97</b>	<b>&lt;0.50</b>	<b>&lt;0.50</b>	<b>&lt;0.50</b>	<b>27</b>	<b>1.27</b>	<b>5.66</b>



SYMBOLS AND ABBREVIATIONS:

-- = Not analyzed/applicable/measured/available  
< = Not detected at or above laboratory reporting limit  
BTEX = Benzene, toluene, ethylbenzene and xylenes  
DO = Dissolved oxygen  
DTW = Depth to water in ft bgs  
ft bgs = feet below ground surface  
ft MSL = feet above mean sea level  
GRO = Gasoline range organics  
GWE = Groundwater elevation measured in ft MSL  
mg/L = Milligrams per liter  
MTBE = Methyl tert butyl ether  
NP = Well not purged prior to sampling  
P = Well purged prior to sampling  
TOC = Top of casing measured in ft MSL  
TPH-g = Total petroleum hydrocarbons as gasoline  
µg/L = Micrograms per liter

FOOTNOTES:

a = SPH detected and GWE corrected: Corrected elevation (Z') = Z + (h \* 0.73) where: Z: measured elevation, h: floating product thickness, 0.73: density ratio of oil to water.  
b = MTBE analyzed by EPA method 8240.  
c = MTBE, sample also analyzed for fuel oxygenates.  
d = Well was decommissioned on 2/12/1996.  
e = Well inaccessible.  
f = Duplicate  
g = Well was dry.  
h = Insufficient water to sample.  
i = Well is not part of the sampling program and therefore was not sampled.  
j = Sheen in well.  
k = Could not locate well.  
l = Quantitation of unknown hydrocarbon(s) in sample based on gasoline.

NOTES:

Wells surveyed to NAVD'88 datum on 1/27/2004.

Beginning on the first quarter 2003 sampling event (2/10/2003), TPH-g, BTEX and MTBE analyzed by EPA method 8260. Prior to 2/10/2003, BTEX by EPA method 8021B from 10/29/99 to 2/10/03, and 8020 prior to 10/29/99.

Beginning in the fourth quarter 2003, the laboratory modified the reported analyte list. TPH-g was changed to GRO. The resulting data may be impacted by the potential of non-TPH-g analytes within the requested fuel range resulting in a higher concentration being reported.

Beginning in the second quarter 2004, the carbon range for GRO was changed from C6-C10 to C4-C12.

Values for DO and pH were obtained through field measurements.

GRO analysis was completed by EPA method 8260B (C4-C12) for samples collected from the time period April 2006 through February 4, 2008. The analysis for GRO was changed to EPA method 8015B (C6-C12) for samples collected from the time period February 5, 2008 through the present.

Note: The data within this table collected prior to April 2006 was provided to Broadbent & Associates, Inc. by Atlantic Richfield Company and their previous consultants. Broadbent & Associates, Inc. has not verified the accuracy of this information.

**Table 2. Summary of Fuel Additives Analytical Data  
Station #6002, 6235 Seminary Ave., Oakland, CA**

Well and Sample Date	Concentrations in (µg/L)								Comments
	Ethanol	TBA	MTBE	DIPE	ETBE	TAME	1,2-DCA	EDB	
<b>MW-3</b>									
2/10/2003	<40	<20	<0.50	<0.50	<0.50	<0.50	--	--	
08/30/2004	<100	<20	0.72	<0.50	<0.50	<0.50	<0.50	<0.50	
08/11/2005	<100	<20	0.73	<0.50	<0.50	<0.50	<0.50	<0.50	
8/25/2006	<300	<20	<0.50	<0.50	<0.50	<0.50	<0.50	<0.50	
8/8/2007	<300	<20	<0.50	<0.50	<0.50	<0.50	<0.50	<0.50	
8/21/2008	<300	<10	0.81	<0.50	<0.50	<0.50	<0.50	<0.50	
<b>MW-4</b>									
2/10/2003	<40	<20	<0.50	<0.50	<0.50	<0.50	--	--	
6/3/2003	<100	<20	<0.50	<0.50	<0.50	<0.50	--	--	
8/14/2003	<100	<20	<0.50	<0.50	<0.50	<0.50	<0.50	<0.50	
08/30/2004	<100	<20	<0.50	<0.50	<0.50	<0.50	<0.50	<0.50	
08/11/2005	<100	<20	<0.50	<0.50	<0.50	<0.50	<0.50	<0.50	
8/25/2006	<300	<20	<0.50	<0.50	<0.50	<0.50	<0.50	<0.50	
8/8/2007	<300	<20	<0.50	<0.50	<0.50	<0.50	<0.50	<0.50	
8/21/2008	<300	<10	<0.50	<0.50	<0.50	<0.50	<0.50	<0.50	
<b>MW-5</b>									
2/10/2003	<200	<100	100	<0.50	<0.50	<0.50	--	--	
6/3/2003	<1,000	<200	160	<5.0	<5.0	<5.0	--	--	
11/13/2003	<1,000	<200	90	<5.0	<5.0	<5.0	--	--	
02/13/2004	<200	41	90	<1.0	<1.0	<1.0	<1.0	<1.0	
05/05/2004	<500	<100	130	<2.5	<2.5	<2.5	<2.5	<2.5	
08/30/2004	<500	100	85	<2.5	<2.5	<2.5	<2.5	<2.5	
11/08/2004	<200	43	69	<1.0	<1.0	<1.0	<1.0	<1.0	
02/07/2005	<200	<40	15	<1.0	<1.0	<1.0	<1.0	<1.0	
05/09/2005	<200	<40	19	<1.0	<1.0	<1.0	<1.0	<1.0	a
08/11/2005	<500	<100	51	<2.5	<2.5	<2.5	<2.5	<2.5	
12/02/2005	<500	<100	13	<2.5	<2.5	<2.5	<2.5	<2.5	
02/15/2006	<300	<20	<0.50	<0.50	<0.50	<0.50	<0.50	<0.50	
5/19/2006	<300	25	15	<0.50	<0.50	<0.50	<0.50	<0.50	a, c
8/25/2006	<1,500	<100	17	<2.5	<2.5	<2.5	<2.5	<2.5	

**Table 2. Summary of Fuel Additives Analytical Data  
Station #6002, 6235 Seminary Ave., Oakland, CA**

Well and Sample Date	Concentrations in (µg/L)								Comments
	Ethanol	TBA	MTBE	DIPE	ETBE	TAME	1,2-DCA	EDB	
<b>MW-5 Cont.</b>									
11/2/2006	<600	70	18	<1.0	<1.0	<1.0	<1.0	<1.0	a
2/6/2007	<600	45	13	<1.0	<1.0	<1.0	<1.0	<1.0	
5/9/2007	<600	69	31	<1.0	<1.0	<1.0	<1.0	<1.0	
8/8/2007	<600	<40	11	<1.0	<1.0	<1.0	<1.0	<1.0	
11/14/2007	<600	46	11	<1.0	<1.0	<1.0	<1.0	<1.0	
2/28/2008	<1,500	<50	<2.5	<2.5	<2.5	<2.5	<2.5	<2.5	
5/23/2008	<300	52	17	<0.50	<0.50	<0.50	<0.50	<0.50	
8/21/2008	<300	40	8.7	<0.50	<0.50	<0.50	<0.50	<0.50	
11/13/2008	<300	27	5.6	<0.50	<0.50	<0.50	<0.50	<0.50	
<b>2/23/2009</b>	<b>&lt;300</b>	<b>14</b>	<b>3.2</b>	<b>&lt;0.50</b>	<b>&lt;0.50</b>	<b>&lt;0.50</b>	<b>&lt;0.50</b>	<b>0.61</b>	
<b>MW-6</b>									
2/10/2003	<40	<20	<0.50	<0.50	<0.50	<0.50	--	--	
08/30/2004	<100	<20	<0.50	<0.50	<0.50	<0.50	<0.50	<0.50	
08/11/2005	<100	<20	<0.50	<0.50	<0.50	<0.50	<0.50	<0.50	
8/25/2006	<300	<20	<0.50	<0.50	<0.50	<0.50	<0.50	<0.50	
8/8/2007	<300	<20	<0.50	<0.50	<0.50	<0.50	<0.50	<0.50	
8/21/2008	<300	<10	<0.50	<0.50	<0.50	<0.50	<0.50	<0.50	
<b>MW-7</b>									
2/10/2003	<40	<20	<0.50	<0.50	<0.50	<0.50	--	--	
6/3/2003	<100	<20	<0.50	<0.50	<0.50	<0.50	--	--	
8/14/2003	<100	<20	<0.50	<0.50	<0.50	<0.50	<0.50	<0.50	
08/11/2005	<100	<20	<0.50	<0.50	<0.50	<0.50	<0.50	<0.50	
8/25/2006	<300	<20	<0.50	<0.50	<0.50	<0.50	<0.50	<0.50	
<b>MW-8</b>									
2/10/2003	<40	<20	<0.50	<0.50	<0.50	<0.50	--	--	
6/3/2003	<100	<20	<0.50	<0.50	<0.50	<0.50	--	--	
8/14/2003	<100	<20	<0.50	<0.50	<0.50	<0.50	<0.50	<0.50	
08/30/2004	<100	<20	<0.50	<0.50	<0.50	<0.50	<0.50	<0.50	
02/15/2006	--	--	--	--	--	--	--	--	Well inaccessible
8/25/2006	<300	<20	<0.50	<0.50	<0.50	<0.50	<0.50	<0.50	

**Table 2. Summary of Fuel Additives Analytical Data  
Station #6002, 6235 Seminary Ave., Oakland, CA**

Well and Sample Date	Concentrations in (µg/L)								Comments
	Ethanol	TBA	MTBE	DIPE	ETBE	TAME	1,2-DCA	EDB	
<b>VW-1</b>									
2/10/2003	<40	<20	11	<0.50	<0.50	<0.50	--	--	
6/3/2003	<100	<20	13	<0.50	<0.50	<0.50	--	--	
8/14/2003	<100	<20	18	<0.50	<0.50	<0.50	<0.50	<0.50	
11/13/2003	<100	<20	13	<0.50	<0.50	<0.50	--	--	
02/13/2004	<100	<20	8.0	<0.50	<0.50	<0.50	<0.50	<0.50	
05/05/2004	<100	<20	11	<0.50	<0.50	<0.50	<0.50	<0.50	
08/30/2004	<100	<20	24	<0.50	<0.50	<0.50	<0.50	<0.50	
11/08/2004	<100	<20	27	<0.50	<0.50	<0.50	<0.50	<0.50	
02/07/2005	<100	<20	5.1	<0.50	<0.50	<0.50	<0.50	<0.50	
05/09/2005	<100	<20	6.9	<0.50	<0.50	<0.50	<0.50	<0.50	
08/11/2005	<100	<20	10	<0.50	<0.50	<0.50	<0.50	<0.50	
12/02/2005	<100	<20	9.0	<0.50	<0.50	<0.50	<0.50	<0.50	a
02/15/2006	<300	<20	2.8	<0.50	<0.50	<0.50	<0.50	<0.50	
5/19/2006	<300	<20	3.7	<0.50	<0.50	<0.50	<0.50	<0.50	a, c
8/25/2006	<300	<20	8.3	<0.50	<0.50	<0.50	<0.50	<0.50	
11/2/2006	<300	<20	11	<0.50	<0.50	<0.50	<0.50	<0.50	a
2/6/2007	<300	<20	2.3	<0.50	<0.50	<0.50	<0.50	<0.50	
5/9/2007	<300	<20	3.2	<0.50	<0.50	<0.50	<0.50	<0.50	
8/8/2007	<300	<20	1.9	<0.50	<0.50	<0.50	<0.50	<0.50	
11/14/2007	<300	<20	3.7	<0.50	<0.50	<0.50	<0.50	<0.50	
2/28/2008	<300	<10	0.86	<0.50	<0.50	<0.50	<0.50	<0.50	
5/23/2008	<300	<10	0.91	<0.50	<0.50	<0.50	<0.50	<0.50	
8/21/2008	<300	<10	1.4	<0.50	<0.50	<0.50	<0.50	<0.50	
11/13/2008	<300	<10	1.5	<0.50	<0.50	<0.50	<0.50	<0.50	
<b>2/23/2009</b>	<b>&lt;300</b>	<b>&lt;10</b>	<b>0.84</b>	<b>&lt;0.50</b>	<b>&lt;0.50</b>	<b>&lt;0.50</b>	<b>&lt;0.50</b>	<b>&lt;0.50</b>	
<b>VW-3</b>									
<b>VW-4</b>									
2/10/2003	<4,000	<2,000	2500	<0.50	<0.50	<0.50	--	--	
6/3/2003	<2,000	4,100	440	<10	<10	<10	--	--	
8/14/2003	<1,000	3,200	170	<5.0	<5.0	<5.0	<5.0	<5.0	

**Table 2. Summary of Fuel Additives Analytical Data  
Station #6002, 6235 Seminary Ave., Oakland, CA**

Well and Sample Date	Concentrations in (µg/L)								Comments
	Ethanol	TBA	MTBE	DIPE	ETBE	TAME	1,2-DCA	EDB	
<b>VW-4 Cont.</b>									
11/13/2003	<1,000	3,300	130	<5.0	<5.0	<5.0	--	--	
02/13/2004	<500	1,300	210	<2.5	<2.5	<2.5	<2.5	<2.5	
05/05/2004	<200	1,500	66	<1.0	1.3	<1.0	<1.0	<1.0	
08/30/2004	<1,000	5,400	220	<5.0	5.4	<5.0	<5.0	<5.0	
11/08/2004	<500	2,700	140	<2.5	<2.5	<2.5	<2.5	<2.5	
02/07/2005	<100	1,000	47	<0.50	0.89	<0.50	<0.50	<0.50	
05/09/2005	<100	1,200	37	<0.50	0.92	<0.50	<0.50	<0.50	
08/11/2005	<100	2,000	15	<0.50	1.8	<0.50	<0.50	<0.50	b
12/02/2005	<200	2,400	28	<1.0	2.2	<1.0	<1.0	<1.0	
02/15/2006	<300	230	11	<0.50	<0.50	<0.50	<0.50	<0.50	
5/19/2006	<300	580	16	<0.50	<0.50	<0.50	<0.50	<0.50	a
8/25/2006	<300	1,900	17	<0.50	1.9	<0.50	<0.50	<0.50	
11/2/2006	<300	2,400	20	<0.50	2.3	<0.50	<0.50	<0.50	a
2/6/2007	<300	<20	1.6	<0.50	<0.50	<0.50	<0.50	<0.50	
5/9/2007	<300	410	21	<0.50	<0.50	<0.50	<0.50	<0.50	
8/8/2007	<300	1,300	5.4	<0.50	1.2	<0.50	<0.50	<0.50	
11/14/2007	<300	1,700	6.4	<0.50	1.7	<0.50	<0.50	<0.50	
2/28/2008	<300	59	8.4	<0.50	<0.50	<0.50	<0.50	<0.50	
5/23/2008	<600	280	6.4	<1.0	<1.0	<1.0	<1.0	<1.0	
8/21/2008	<1,500	720	3.2	<2.5	<2.5	<2.5	<2.5	<2.5	
11/13/2008	<1,200	940	2.7	<2.0	<2.0	<2.0	<2.0	<2.0	
<b>2/23/2009</b>	<b>&lt;300</b>	<b>99</b>	<b>27</b>	<b>&lt;0.50</b>	<b>&lt;0.50</b>	<b>&lt;0.50</b>	<b>&lt;0.50</b>	<b>&lt;0.50</b>	

SYMBOLS AND ABBREVIATIONS:

-- = Not analyzed/applicable/measured/available

< = Not detected at or above the laboratory reporting limit

1,2-DCA = 1,2-Dichloroethane

DIPE = Di-isopropyl ether

EDB = 1,2-Dibromoethane

ETBE = Ethyl tert-butyl ether

MTBE = Methyl tert-butyl ether

TAME = tert-Amyl methyl ether

TBA = tert-Butyl alcohol

µg/L = Micrograms per Liter

FOOTNOTES:

a = Calibration verification for ethanol was within the method limits but outside the contract limits.

b = The initial analysis for TBA was within holding time but required dilution.

NOTES:

All volatile organic compounds analyzed using EPA Method 8260B.

The data within this table collected prior to August 2002 was provided to URS by RM and their previous consultants. URS has not verified the accuracy of this information.

Note: The data within this table collected prior to April 2006 was provided to Broadbent & Associates, Inc. by Atlantic Richfield Company and their previous consultants. Broadbent & Associates, Inc. has not verified the accuracy of this information.

**Table 3. Historical Ground-Water Flow Direction and Gradient  
Station #6002, 6235 Seminary Ave., Oakland, CA**

<b>Date Sampled</b>	<b>Approximate Flow Direction</b>	<b>Approximate Hydraulic Gradient</b>
3/15/1995	West-Southwest	0.08
5/30/1995	West-Southwest	0.08
9/1/1995	West-Southwest	0.09
11/13/1995	West-Southwest	0.08
2/23/1996	West-Southwest	0.08
5/10/1996	West-Southwest	0.08
8/9/1996	Southwest	0.08
11/8/1996	Southwest	0.06
3/21/1997	West-Southwest	0.05
5/27/1997	West-Southwest	0.07
8/5/1997	West	0.08
10/29/1997	West-Southwest	0.04
2/25/1998	West-Southwest	0.05
5/12/1998	West	0.07
7/28/1998	West	0.07
10/27/1998	West-Southwest	0.06
2/8/1999	West-Southwest	0.07
6/1/1999	West-Northwest	0.07
8/25/1999	West-Southwest	0.07
10/29/1999	West	0.07
2/16/2000	Southwest	0.05
6/23/2000	West	0.04
8/17/2000	West	0.09
11/10/2000	West-Southwest	0.08
2/12/2001	West-Southwest	0.07
4/13/2001	West	0.09
7/18/2001	West	0.08
10/1/2001	West-Southwest	0.08
1/14/2002	West-Southwest	0.07
4/3/2002	West-Southwest	0.08
8/8/2002	West-Southwest	0.09
11/27/2002	West-Southwest	0.08
2/10/2003	Southwest	0.06
6/3/2003	West	0.07
8/14/2003	West-Southwest	0.07
11/13/2003	West-Southwest	0.07
2/13/2004	Southwest	0.05
5/4/2004	Southwest	0.06
8/30/2004	Southwest	0.07
11/8/2004	Southwest	0.10
2/7/2005	Southwest	0.1
5/9/2005	Southwest	0.07

**Table 3. Historical Ground-Water Flow Direction and Gradient  
Station #6002, 6235 Seminary Ave., Oakland, CA**

<b>Date Sampled</b>	<b>Approximate Flow Direction</b>	<b>Approximate Hydraulic Gradient</b>
8/11/2005	West	0.07
12/2/2005	Southwest	0.10
2/15/2006	Southwest	0.07
4/28/2006	West	0.07
8/25/2006	West	0.07
11/2/2006	West	0.09
2/6/2007	West	0.05
5/9/2007	West	0.05
8/8/2007	West	0.05
11/14/2007	West	0.06
2/28/2008	West-Southwest	0.06
5/23/2008	West-Southwest	0.06
8/21/2008	West-Southwest	0.07
11/13/2008	West	0.08
<b>2/23/2009</b>	<b>West</b>	<b>0.05</b>

Note: The data within this table collected prior to April 2006 was provided to Broadbent & Associates, Inc. by Atlantic Richfield Company and their previous consultants. Broadbent & Associates, Inc. has not verified the accuracy of this information.



**APPENDIX A**

**STRATUS GROUND-WATER SAMPLING DATA PACKAGE  
(INCLUDES FIELD DATA SHEET, LABORATORY ANALYTICAL REPORT WITH  
CHAIN-OF-CUSTORDY DOCUMENTATION, AND FIELD PROCEDURES)**



3330 Cameron Park Drive, Ste 550  
Cameron Park, California 95682  
(530) 676-6004 ~ Fax: (530) 676-6005

March 4, 2009

Mr. Rob Miller  
Broadbent & Associates, Inc.  
2000 Kirman Avenue  
Reno, NV 89502

Re: Groundwater Sampling Data Package, ARCO Service Station No. 6002, located at  
6235 Seminary Avenue, Oakland, California.

### **General Information**

*Data Submittal Prepared / Reviewed by:* Carol Huff / Jay Johnson

*Phone Number:* (530) 676-6000

*On-Site Supplier Representative:* Jerry Gonzales and Diego Heimlich

*Sampling Date:* February 23, 2009

*Unusual Field Conditions:* None noted.

*Scope of Work Performed:* Quarterly monitoring and sampling.

*Variations from Work Scope:* Well MW-8 is located in a residential backyard. No one was home to grant access and the gate was locked.

This submittal presents the data collected in association with routine groundwater monitoring. The attachments include field sheets, chain of custody documentation, certified analytical results, and field procedures for groundwater sampling documentation. The information is being provided to BP-ARCO's Scoping Supplier for use in preparing a report for regulatory submittal. This submittal is limited to presentation of collected data and does not include data interpretation or conclusions or recommendations.

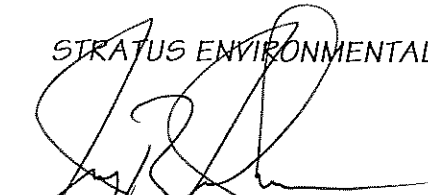
Mr. Rob Miller, Broadbent & Associates, Inc.  
Groundwater Sampling Data Package  
ARCO Service Station No. 6002, Oakland, CA  
Page 2

March 4, 2009

Any questions concerning this submittal should be addressed to the Preparer/Reviewer identified above.

Sincerely,

*STRATUS ENVIRONMENTAL, INC.*

  
Jay R. Johnson, P.G.  
Project Manager



**Attachments:**

- Field Data Sheets
- Chain of Custody Documentation
- Certified Analytical Results
- Field Procedures for Groundwater Sampling

cc: Mr. Paul Supple, BP/ARCO

# BP Alameda Portfolio

## HYDROLOGIC DATA SHEET

AT: 930

Gauge Date: 2-23-09

Project Name: 6235 Seminary Ave, Oakland  
~~6407 Telegraph Ave, Oakland~~

Field Technician: JG

Project Number: ~~974~~ 6002

TOC = Top of Well Casing Elevation  
 TOS = Depth to Top of Screen  
 DTW = Depth to Groundwater Below TOC  
 DTB = Depth to Bottom of Well Casing Below TOC

DIA = Well Casing Diameter  
 ELEV = Groundwater Elevation  
 DUP = Duplicate

WELL OR LOCATION	TIME	MEASUREMENT					PURGE & SAMPLE	SHEEN CONFIRMATION (w/bailer)	COMMENTS
		TOC	TOS	DTW	DTB	DIA			
MW-3	939			7.92	24.30	<del>24.30</del> 4"			
MW-4	1010			7.95	24.05	4"			
MW-5	1003			10.50	24.90	4"			
MW-6	945			7.61	32.90	2"			
MW-7	956			7.03	13.18	2"			
MW-8									NO ACCESS
VW-1	937			6.85	13.12	4"			
VW-3	948			6.60	14.10	4"			
VW-4	952			7.35	14.21	4"			
NO ACCESS to MW-8, NO ONE AT THE RESIDENCE -									

FW = Diego Hernandez Calibration Date

pH/Conductivity/Temperature Meter - YSI Model 63      pH 2-23-09

DO Meter - YSI 5 Series      Conductivity 2-23-09

Please refer to groundwater sampling field procedures      DO 2-23-09

# BP ALAMEDA PORTFOLIO

## WATER SAMPLE FIELD DATA SHEET

PROJECT #: 6002 PURGED BY: JG WELL I.D.: MW-5  
 CLIENT NAME: \_\_\_\_\_ SAMPLED BY: JG SAMPLE I.D.: MW-5  
 LOCATION: Oakland - 6235 Seminary Ave. QA SAMPLES: \_\_\_\_\_

DATE PURGED 2-23-09 START (2400hr) 10:50 END (2400hr) 10:55  
 DATE SAMPLED 2-23-09 SAMPLE TIME (2400hr) 10:54  
 SAMPLE TYPE: Groundwater  Surface Water \_\_\_\_\_ Treatment Effluent \_\_\_\_\_ Other \_\_\_\_\_

CASING DIAMETER: 2" \_\_\_\_\_ 3" \_\_\_\_\_ 4"  5" \_\_\_\_\_ 6" \_\_\_\_\_ 8" \_\_\_\_\_ Other \_\_\_\_\_  
 Casing Volume: (gallons per foot) (0.17) (0.38) (0.67) (1.02) (1.50) (2.60) ( )

DEPTH TO BOTTOM (feet) = 24.90 CASING VOLUME (gal) = \_\_\_\_\_  
 DEPTH TO WATER (feet) = 10.50 CALCULATED PURGE (gal) = N/P  
 WATER COLUMN HEIGHT (feet) = \_\_\_\_\_ ACTUAL PURGE (gal) = \_\_\_\_\_

### FIELD MEASUREMENTS

DATE	TIME (2400hr)	VOLUME (gal)	TEMP. (degrees C)	CONDUCTIVITY (umhos/cm)	pH (units)	COLOR (visual)	TURBIDITY (NTU)
<u>2-23-09</u>	<u>10:54</u>	<del>1.3</del>	<u>17.3</u>	<u>609</u>	<u>6.17</u>	<u>clear</u>	<u>-</u>

SAMPLE INFORMATION

SAMPLE DEPTH TO WATER: 11.10 SAMPLE TURBIDITY: clear

80% RECHARGE:  YES  NO ANALYSES: Suo  
 ODOR: YES SAMPLE VESSEL / PRESERVATIVE: 6 VOAS / HCL

PURGING EQUIPMENT	SAMPLING EQUIPMENT
<input type="checkbox"/> Bladder Pump <input type="checkbox"/> Centrifugal Pump <input type="checkbox"/> Submersible Pump <input type="checkbox"/> Peristaltic Pump Other: _____ Pump Depth: _____	<input type="checkbox"/> Bladder Pump <input type="checkbox"/> Centrifugal Pump <input type="checkbox"/> Submersible Pump <input type="checkbox"/> Peristaltic Pump Other: _____
<input type="checkbox"/> Bailer (Teflon) <input type="checkbox"/> Bailer (PVC) <input type="checkbox"/> Bailer (Stainless Steel) <input type="checkbox"/> Dedicated _____	<input type="checkbox"/> Bailer (Teflon) <input checked="" type="checkbox"/> Bailer ( <input type="checkbox"/> PVC or <input checked="" type="checkbox"/> disposable) <input type="checkbox"/> Bailer (Stainless Steel) <input type="checkbox"/> Dedicated _____

WELL INTEGRITY: Good LOCK#: master  
 REMARKS: DO, 1.30

SIGNATURE: JG Page \_\_\_\_\_ of \_\_\_\_\_

# BP ALAMEDA PORTFOLIO

## WATER SAMPLE FIELD DATA SHEET

PROJECT #: 6002 PURGED BY: JG WELL I.D.: VW-1  
 CLIENT NAME: \_\_\_\_\_ SAMPLED BY: JG SAMPLE I.D.: VW-1  
 LOCATION: Oakland - 6235 Seminary Ave. QA SAMPLES: \_\_\_\_\_

DATE PURGED 2-23-09 START (2400hr) 10:20 END (2400hr) 10:35  
 DATE SAMPLED 2-23-09 SAMPLE TIME (2400hr) 10:35  
 SAMPLE TYPE: Groundwater  Surface Water \_\_\_\_\_ Treatment Effluent \_\_\_\_\_ Other \_\_\_\_\_

CASING DIAMETER: 2" \_\_\_\_\_ 3" \_\_\_\_\_ 4"  5" \_\_\_\_\_ 6" \_\_\_\_\_ 8" \_\_\_\_\_ Other \_\_\_\_\_  
 Casing Volume: (gallons per foot) (0.17) (0.38) (0.67) (1.02) (1.50) (2.60) ( )

DEPTH TO BOTTOM (feet) = 13.12 CASING VOLUME (gal) = \_\_\_\_\_  
 DEPTH TO WATER (feet) = 6.85 CALCULATED PURGE (gal) = NIP  
 WATER COLUMN HEIGHT (feet) = \_\_\_\_\_ ACTUAL PURGE (gal) = \_\_\_\_\_

### FIELD MEASUREMENTS

DATE	TIME (2400hr)	VOLUME (gal)	TEMP. (degrees C)	CONDUCTIVITY (umhos/cm)	pH (units)	COLOR (visual)	TURBIDITY (NTU)
<u>2-23-09</u>	<u>10:35</u>	<u>—</u>	<u>16.7</u>	<u>594</u>	<u>5.56</u>	<u>clear</u>	_____
_____	_____	_____	_____	<u>NIP</u>	_____	_____	_____
_____	_____	_____	_____	_____	_____	_____	_____
_____	_____	_____	_____	_____	_____	_____	_____
_____	_____	_____	_____	_____	_____	_____	_____
_____	_____	_____	_____	_____	_____	_____	_____
_____	_____	_____	_____	_____	_____	_____	_____

### SAMPLE INFORMATION

SAMPLE DEPTH TO WATER: 6.90 SAMPLE TURBIDITY: clear

80% RECHARGE:  YES  NO ANALYSES: SW0  
 ODOR: NO SAMPLE VESSEL / PRESERVATIVE: 6 VOAS 1 HCL

#### PURGING EQUIPMENT

Bladder Pump       Bailer (Teflon)  
 Centrifugal Pump       Bailer (PVC)  
 Submersible Pump       Bailer (Stainless Steel)  
 Peristaltic Pump       Dedicated \_\_\_\_\_  
 Other: \_\_\_\_\_  
 Pump Depth: \_\_\_\_\_

#### SAMPLING EQUIPMENT

Bladder Pump       Bailer (Teflon)  
 Centrifugal Pump       Bailer (  PVC or  disposable)  
 Submersible Pump       Bailer (Stainless Steel)  
 Peristaltic Pump       Dedicated \_\_\_\_\_  
 Other: \_\_\_\_\_

WELL INTEGRITY: Good LOCK#: Master

REMARKS: P.O. 1.11

SIGNATURE: JG Page \_\_\_\_\_ of \_\_\_\_\_

**BP ALAMEDA PORTFOLIO**  
**WATER SAMPLE FIELD DATA SHEET**

PROJECT #: 6002 PURGED BY: JG WELL I.D.: VW-4  
 CLIENT NAME: \_\_\_\_\_ SAMPLED BY: JG SAMPLE I.D.: VW-4  
 LOCATION: Oakland - 6235 Seminary Ave. QA SAMPLES: \_\_\_\_\_

DATE PURGED 2-23-09 START (2400hr) 10:40 END (2400hr) 10:45  
 DATE SAMPLED 2-23-09 SAMPLE TIME (2400hr) 10:44  
 SAMPLE TYPE: Groundwater  Surface Water \_\_\_\_\_ Treatment Effluent \_\_\_\_\_ Other \_\_\_\_\_

CASING DIAMETER: 2" \_\_\_\_\_ 3" \_\_\_\_\_ 4"  5" \_\_\_\_\_ 6" \_\_\_\_\_ 8" \_\_\_\_\_ Other \_\_\_\_\_  
 Casing Volume: (gallons per foot) (0.17) (0.38) (0.67) (1.02) (1.50) (2.60) ( )

DEPTH TO BOTTOM (feet) = 14.21 CASING VOLUME (gal) = \_\_\_\_\_  
 DEPTH TO WATER (feet) = 7.35 CALCULATED PURGE (gal) = NP  
 WATER COLUMN HEIGHT (feet) = \_\_\_\_\_ ACTUAL PURGE (gal) = \_\_\_\_\_

FIELD MEASUREMENTS

DATE	TIME (2400hr)	VOLUME (gal)	TEMP. (degrees C)	CONDUCTIVITY (umhos/cm)	pH (units)	COLOR (visual)	TURBIDITY (NTU)
<u>2-23-09</u>	<u>1044</u>	<u>NP</u>	<u>15.8</u>	<u>569</u>	<u>5.66</u>	<u>clear</u>	<u>-</u>

SAMPLE INFORMATION

SAMPLE DEPTH TO WATER: 7.31 SAMPLE TURBIDITY: clear

80% RECHARGE:  YES \_\_\_\_\_ NO \_\_\_\_\_ ANALYSES: SWO  
 ODOR: no SAMPLE VESSEL / PRESERVATIVE: 6 VOAS / HCL

PURGING EQUIPMENT

\_\_\_\_ Bladder Pump \_\_\_\_\_ Bailer (Teflon)  
 \_\_\_\_ Centrifugal Pump \_\_\_\_\_ Bailer (PVC)  
 \_\_\_\_ Submersible Pump NA \_\_\_\_\_ Bailer (Stainless Steel)  
 \_\_\_\_ Peristaltic Pump \_\_\_\_\_ Dedicated \_\_\_\_\_  
 Other: \_\_\_\_\_  
 Pump Depth: \_\_\_\_\_

SAMPLING EQUIPMENT

\_\_\_\_ Bladder Pump \_\_\_\_\_ Bailer (Teflon)  
 \_\_\_\_ Centrifugal Pump  Bailer (\_\_\_\_ PVC or  disposable)  
 \_\_\_\_ Submersible Pump \_\_\_\_\_ Bailer (Stainless Steel)  
 \_\_\_\_ Peristaltic Pump \_\_\_\_\_ Dedicated \_\_\_\_\_  
 Other: \_\_\_\_\_

WELL INTEGRITY: Good LOCK#: Master

REMARKS: D.O. 1.27

SIGNATURE: JG Page \_\_\_\_ of \_\_\_\_

# WELLHEAD OBSERVATION FORM



Site Name/Number: 6002

Date: 2-23-09

Technician: Jerry

Well I.D.	Box in Good Condition? <small>X = Yes Blank = No</small>	Lock Missing? <small>X = Yes (replaced) Blank = No</small>	Water in Wellbox? <small>X = Yes Blank = No</small>	Water Level Relative to Cap? <small>A = Above cap B = Below cap L = Level w/cap</small>	Well Cap? <small>I = Intact M = Missing or Compromised (replaced)</small>	Bolts Missing? <small>X = Yes Blank = No</small>	Bolts Stripped? <small>X = Yes Blank = No</small>	Bolt Holes Stripped? <small>X = Yes Blank = No</small>	Cracked or Broken Lid? <small>X = Yes Blank = No</small>	Cracked or Broken Box? <small>X = Yes Blank = No</small>	Grout Level more than 1ft below TOC? <small>X = Yes Blank = No</small>	Additional Comments <small>(such as missing lid, concrete needs replacement, or other - explain)</small>
mw-3	X				I							
mw-4	X				I							
mw-5	X				I							
mw-6	X				I		X					
mw-7	X				I							
mw-8	NO ACCESS											
VW-1	X				I							
VW-3	X				I	NA	NA	NA				
VW-4	X				I	NA	NA	NA				

**DRUM INVENTORY**

Drums on site? Yes  No  (circle)  
 Type and # Steel: \_\_\_\_\_ Plastic: \_\_\_\_\_

Note whether drums are full or empty, solids or liquids:  
 \_\_\_\_\_  
 \_\_\_\_\_

Drum label info (description, date, contact info):  
 \_\_\_\_\_  
 \_\_\_\_\_  
 \_\_\_\_\_

**GENERAL SITE CONDITIONS**

Make notes on housekeeping conditions (such as trash around remediation system enclosure/compound, bent or missing bollards, signs missing from compound fences, graffiti on compound, etc.)

\_\_\_\_\_  
 \_\_\_\_\_  
 \_\_\_\_\_  
 \_\_\_\_\_  
 \_\_\_\_\_

(updated 3-28-08, SS)





# Laboratory Management Program LaMP Chain of Custody Record

BP/ARC Project Name: BP 6002  
 BP/ARC Facility No: 6002

Req Due Date (mm/dd/yy): 14 Day TAT Rush TAT: Yes  No

Lab Work Order Number: \_\_\_\_\_

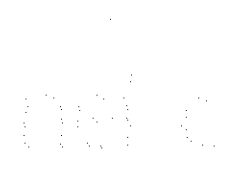
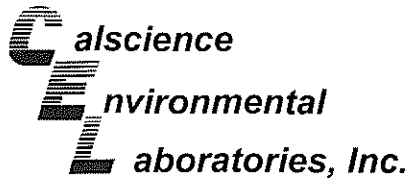
Lab Name: CalScience	BP/ARC Facility Address: 6235 Seminary Avenue	Consultant/Contractor: Stratus Environmental Inc.
Lab Address: 7440 Lincoln Way, Garden Grove, CA 92841	City, State, ZIP Code: Oakland Ca	Consultant/Contractor Project No:
Lab PM: Richard Villafania	Lead Regulatory Agency: Alameda	Address: 3330 Cameron Park Drive, #550, Cameron Park, CA 95682
Lab Phone: 714-895-5494 Fax: 714-895-7501	California Global ID No.: T0600100105	Consultant/Contractor PM: Jay Johnson
Lab Shipping Acct:	Enfos Proposal No:	Phone: 530-676-6000 Fax: 530-676-6005
Lab Bottle Order No:	Accounting Mode: Provision <input checked="" type="checkbox"/> OOC-BU <input type="checkbox"/> OOC-RM <input type="checkbox"/>	Email EDD To: <a href="mailto:chuff@stratusinc.net">chuff@stratusinc.net</a>
Other info:	Stage: BP/ARC WBS Stage Activity: BP/ARC WBS Activity	Invoice To: BP/ARC <input checked="" type="checkbox"/> Contractor <input type="checkbox"/>

BP/ARC EBM: Paul Supple				Matrix		No. Containers / Preservative							Requested Analyses							Report Type & QC Level						
EBM Phone: (925) 275-3801				Soil / Solid	Water / Liquid	Air / Vapor	Total Number of Containers	Unpreserved	H <sub>2</sub> SO <sub>4</sub>	HNO <sub>3</sub>	HCl	Methanol	GRO by 8015M	BTEX/5 FO* by 8260B	Ethanol by 8260B	EDB by 8260B	1,2-DCA by 8260B							Standard <input checked="" type="checkbox"/>	Full Data Package <input type="checkbox"/>	
EBM Email: <a href="mailto:paul.supple@bp.com">paul.supple@bp.com</a>																										Note: If sample not collected, indicate "No Sample" in comments and single-strike out and initial any preprinted sample description.  <b>Comments</b> *Oxy = MTBE, TAME, ETBE, DIPE, TBA
Lab No.	Sample Description	Date	Time																							
	MW-5	2-23-09	10:54	X			6				X		X	X	X	X										
	VW-1		10:35	X			6				X		X	X	X	X										
	VW-4		10:44	X			6				X		X	X	X	X										
	TB-6002-		600	X			2				X														ON HOLD	

Sampler's Name: <u>J. Miller</u>	Relinquished By / Affiliation		Date	Time	Accepted By / Affiliation		Date	Time
Sampler's Company: Stratus Environmental Inc.	<u>Jay Gonzalez</u>		<u>2-23-09</u>					
Shipment Method:	Ship Date:							
Shipment Tracking No:								

Special Instructions: TB Sample ON HOLD! Cc results to [rmiller@broadbentinc.com](mailto:rmiller@broadbentinc.com)

THIS LINE - LAB USE ONLY: Custody Seals In Place: Yes / No	Temp Blank: Yes / No	Cooler Temp on Receipt: _____ °F/C	Trip Blank: Yes / No	MS/MSD Sample Submitted: Yes / No
--	----------------------	------------------------------------	----------------------	-----------------------------------



March 09, 2009

Jay Johnson  
Stratus Environmental, inc.  
3330 Cameron Park Drive, Suite 550  
Cameron Park, CA 95682-8861

Subject: **Calscience Work Order No.: 09-02-2184**  
**Client Reference: BP 6002**

Dear Client:

Enclosed is an analytical report for the above-referenced project. The samples included in this report were received 2/25/2009 and analyzed in accordance with the attached chain-of-custody.

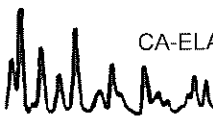
Unless otherwise noted, all analytical testing was accomplished in accordance with the guidelines established in our Quality Systems Manual, applicable standard operating procedures, and other related documentation. The original report of subcontracted analysis, if any, is provided herein, and follows the standard Calscience data package. The results in this analytical report are limited to the samples tested and any reproduction thereof must be made in its entirety.

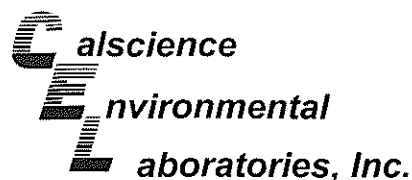
If you have any questions regarding this report, please do not hesitate to contact the undersigned.

Sincerely,

A handwritten signature in black ink, appearing to read "Richard Villafania", is written over a faint circular stamp.

Calscience Environmental  
Laboratories, Inc.  
Richard Villafania  
Project Manager





## Analytical Report

Stratus Environmental, inc.  
3330 Cameron Park Drive, Suite 550  
Cameron Park, CA 95682-8861

Date Received: 02/25/09  
Work Order No: 09-02-2184  
Preparation: EPA 5030B  
Method: EPA 8015B (M)

Project: BP 6002

Page 1 of 1

Client Sample Number	Lab Sample Number	Date/Time Collected	Matrix	Instrument	Date Prepared	Date/Time Analyzed	QC Batch ID
MW-5	09-02-2184-1-E	02/23/09 10:54	Aqueous	GC 4	02/27/09	02/28/09 01:55	090227B01

Comment(s): -LW = Quantitation of unknown hydrocarbon(s) in sample based on gasoline.

Parameter	Result	RL	DF	Qual	Units
Gasoline Range Organics (C6-C12)	4100	250	5		ug/L
<u>Surrogates:</u>	<u>REC (%)</u>	<u>Control Limits</u>		<u>Qual</u>	
1,4-Bromofluorobenzene	115	38-134			

Client Sample Number	Lab Sample Number	Date/Time Collected	Matrix	Instrument	Date Prepared	Date/Time Analyzed	QC Batch ID
VW-1	09-02-2184-2-E	02/23/09 10:55	Aqueous	GC 4	02/27/09	02/28/09 02:28	090227B01

Parameter	Result	RL	DF	Qual	Units
Gasoline Range Organics (C6-C12)	ND	50	1		ug/L
<u>Surrogates:</u>	<u>REC (%)</u>	<u>Control Limits</u>		<u>Qual</u>	
1,4-Bromofluorobenzene	103	38-134			

Client Sample Number	Lab Sample Number	Date/Time Collected	Matrix	Instrument	Date Prepared	Date/Time Analyzed	QC Batch ID
VW-4	09-02-2184-3-E	02/23/09 10:44	Aqueous	GC 4	02/27/09	02/28/09 03:01	090227B01

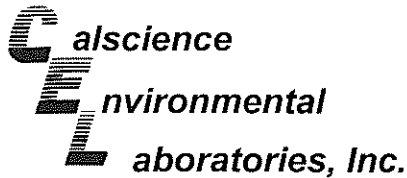
Comment(s): -LW = Quantitation of unknown hydrocarbon(s) in sample based on gasoline.

Parameter	Result	RL	DF	Qual	Units
Gasoline Range Organics (C6-C12)	290	50	1		ug/L
<u>Surrogates:</u>	<u>REC (%)</u>	<u>Control Limits</u>		<u>Qual</u>	
1,4-Bromofluorobenzene	80	38-134			

Client Sample Number	Lab Sample Number	Date/Time Collected	Matrix	Instrument	Date Prepared	Date/Time Analyzed	QC Batch ID
Method Blank	099-12-695-453	N/A	Aqueous	GC 4	02/27/09	02/27/09 18:46	090227B01

Parameter	Result	RL	DF	Qual	Units
Gasoline Range Organics (C6-C12)	ND	50	1		ug/L
<u>Surrogates:</u>	<u>REC (%)</u>	<u>Control Limits</u>		<u>Qual</u>	
1,4-Bromofluorobenzene	79	38-134			

RL - Reporting Limit , DF - Dilution Factor , Qual - Qualifiers



## Analytical Report

Stratus Environmental, inc.  
3330 Cameron Park Drive, Suite 550  
Cameron Park, CA 95682-8861

Date Received: 02/25/09  
Work Order No: 09-02-2184  
Preparation: EPA 5030B  
Method: EPA 8260B  
Units: ug/L

Project: BP 6002

Page 1 of 2

Client Sample Number	Lab Sample Number	Date/Time Collected	Matrix	Instrument	Date Prepared	Date/Time Analyzed	QC Batch ID
MW-5	09-02-2184-1-A	02/23/09 10:54	Aqueous	GC/MS BB	03/04/09	03/04/09 22:49	090304L01

Parameter	Result	RL	DF	Qual	Parameter	Result	RL	DF	Qual
Benzene	ND	0.50	1		Methyl-t-Butyl Ether (MTBE)	3.2	0.50	1	
1,2-Dibromoethane	0.61	0.50	1		Tert-Butyl Alcohol (TBA)	14	10	1	
1,2-Dichloroethane	ND	0.50	1		Diisopropyl Ether (DIPE)	ND	0.50	1	
Ethylbenzene	1.9	0.50	1		Ethyl-t-Butyl Ether (ETBE)	ND	0.50	1	
Toluene	ND	0.50	1		Tert-Amyl-Methyl Ether (TAME)	ND	0.50	1	
Xylenes (total)	1.1	0.50	1		Ethanol	ND	300	1	
<u>Surrogates:</u>	<u>REC (%)</u>	<u>Control Limits</u>		<u>Qual</u>	<u>Surrogates:</u>	<u>REC (%)</u>	<u>Control Limits</u>		<u>Qual</u>
1,2-Dichloroethane-d4	100	73-145			Dibromofluoromethane	114	81-135		
Toluene-d8	99	83-119			1,4-Bromofluorobenzene	107	74-110		

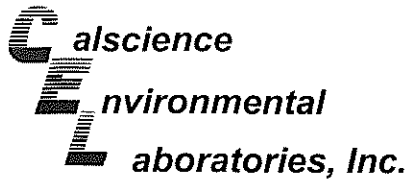
Client Sample Number	Lab Sample Number	Date/Time Collected	Matrix	Instrument	Date Prepared	Date/Time Analyzed	QC Batch ID
VW-1	09-02-2184-2-A	02/23/09 10:35	Aqueous	GC/MS BB	03/03/09	03/04/09 10:41	090303L02

Parameter	Result	RL	DF	Qual	Parameter	Result	RL	DF	Qual
Benzene	ND	0.50	1		Methyl-t-Butyl Ether (MTBE)	0.84	0.50	1	
1,2-Dibromoethane	ND	0.50	1		Tert-Butyl Alcohol (TBA)	ND	10	1	
1,2-Dichloroethane	ND	0.50	1		Diisopropyl Ether (DIPE)	ND	0.50	1	
Ethylbenzene	ND	0.50	1		Ethyl-t-Butyl Ether (ETBE)	ND	0.50	1	
Toluene	ND	0.50	1		Tert-Amyl-Methyl Ether (TAME)	ND	0.50	1	
Xylenes (total)	ND	0.50	1		Ethanol	ND	300	1	
<u>Surrogates:</u>	<u>REC (%)</u>	<u>Control Limits</u>		<u>Qual</u>	<u>Surrogates:</u>	<u>REC (%)</u>	<u>Control Limits</u>		<u>Qual</u>
1,2-Dichloroethane-d4	104	73-145			Dibromofluoromethane	107	81-135		
Toluene-d8	99	83-119			1,4-Bromofluorobenzene	102	74-110		

Client Sample Number	Lab Sample Number	Date/Time Collected	Matrix	Instrument	Date Prepared	Date/Time Analyzed	QC Batch ID
VW-4	09-02-2184-3-B	02/23/09 10:44	Aqueous	GC/MS BB	03/04/09	03/05/09 12:11	090304L02

Parameter	Result	RL	DF	Qual	Parameter	Result	RL	DF	Qual
Benzene	0.97	0.50	1		Methyl-t-Butyl Ether (MTBE)	27	0.50	1	
1,2-Dibromoethane	ND	0.50	1		Tert-Butyl Alcohol (TBA)	99	10	1	
1,2-Dichloroethane	ND	0.50	1		Diisopropyl Ether (DIPE)	ND	0.50	1	
Ethylbenzene	ND	0.50	1		Ethyl-t-Butyl Ether (ETBE)	ND	0.50	1	
Toluene	ND	0.50	1		Tert-Amyl-Methyl Ether (TAME)	ND	0.50	1	
Xylenes (total)	ND	0.50	1		Ethanol	ND	300	1	
<u>Surrogates:</u>	<u>REC (%)</u>	<u>Control Limits</u>		<u>Qual</u>	<u>Surrogates:</u>	<u>REC (%)</u>	<u>Control Limits</u>		<u>Qual</u>
1,2-Dichloroethane-d4	99	73-145			Dibromofluoromethane	97	81-135		
Toluene-d8	98	83-119			1,4-Bromofluorobenzene	97	74-110		

RL - Reporting Limit , DF - Dilution Factor , Qual - Qualifiers



## Analytical Report

Stratus Environmental, inc.  
3330 Cameron Park Drive, Suite 550  
Cameron Park, CA 95682-8861

Date Received: 02/25/09  
Work Order No: 09-02-2184  
Preparation: EPA 5030B  
Method: EPA 8260B  
Units: ug/L

Project: BP 6002

Page 2 of 2

Client Sample Number	Lab Sample Number	Date/Time Collected	Matrix	Instrument	Date Prepared	Date/Time Analyzed	QC Batch ID
Method Blank	099-12-703-747	N/A	Aqueous	GC/MS BB	03/03/09	03/04/09 02:41	090303L02

Parameter	Result	RL	DF	Qual	Parameter	Result	RL	DF	Qual
Benzene	ND	0.50	1		Methyl-t-Butyl Ether (MTBE)	ND	0.50	1	
1,2-Dibromoethane	ND	0.50	1		Tert-Butyl Alcohol (TBA)	ND	10	1	
1,2-Dichloroethane	ND	0.50	1		Diisopropyl Ether (DIPE)	ND	0.50	1	
Ethylbenzene	ND	0.50	1		Ethyl-t-Butyl Ether (ETBE)	ND	0.50	1	
Toluene	ND	0.50	1		Tert-Amyl-Methyl Ether (TAME)	ND	0.50	1	
Xylenes (total)	ND	0.50	1		Ethanol	ND	300	1	
Surrogates:	REC (%)	Control Limits		Qual	Surrogates:	REC (%)	Control Limits		Qual
1,2-Dichloroethane-d4	99	73-145			Dibromofluoromethane	104	81-135		
Toluene-d8	97	83-119			1,4-Bromofluorobenzene	95	74-110		

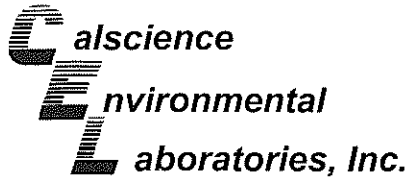
Client Sample Number	Lab Sample Number	Date/Time Collected	Matrix	Instrument	Date Prepared	Date/Time Analyzed	QC Batch ID
Method Blank	099-12-703-748	N/A	Aqueous	GC/MS BB	03/04/09	03/04/09 14:47	090304L01

Parameter	Result	RL	DF	Qual	Parameter	Result	RL	DF	Qual
Benzene	ND	0.50	1		Methyl-t-Butyl Ether (MTBE)	ND	0.50	1	
1,2-Dibromoethane	ND	0.50	1		Tert-Butyl Alcohol (TBA)	ND	10	1	
1,2-Dichloroethane	ND	0.50	1		Diisopropyl Ether (DIPE)	ND	0.50	1	
Ethylbenzene	ND	0.50	1		Ethyl-t-Butyl Ether (ETBE)	ND	0.50	1	
Toluene	ND	0.50	1		Tert-Amyl-Methyl Ether (TAME)	ND	0.50	1	
Xylenes (total)	ND	0.50	1		Ethanol	ND	300	1	
Surrogates:	REC (%)	Control Limits		Qual	Surrogates:	REC (%)	Control Limits		Qual
1,2-Dichloroethane-d4	97	73-145			Dibromofluoromethane	101	81-135		
Toluene-d8	102	83-119			1,4-Bromofluorobenzene	102	74-110		

Client Sample Number	Lab Sample Number	Date/Time Collected	Matrix	Instrument	Date Prepared	Date/Time Analyzed	QC Batch ID
Method Blank	099-12-703-749	N/A	Aqueous	GC/MS BB	03/04/09	03/05/09 03:38	090304L02

Parameter	Result	RL	DF	Qual	Parameter	Result	RL	DF	Qual
Benzene	ND	0.50	1		Methyl-t-Butyl Ether (MTBE)	ND	0.50	1	
1,2-Dibromoethane	ND	0.50	1		Tert-Butyl Alcohol (TBA)	ND	10	1	
1,2-Dichloroethane	ND	0.50	1		Diisopropyl Ether (DIPE)	ND	0.50	1	
Ethylbenzene	ND	0.50	1		Ethyl-t-Butyl Ether (ETBE)	ND	0.50	1	
Toluene	ND	0.50	1		Tert-Amyl-Methyl Ether (TAME)	ND	0.50	1	
Xylenes (total)	ND	0.50	1		Ethanol	ND	300	1	
Surrogates:	REC (%)	Control Limits		Qual	Surrogates:	REC (%)	Control Limits		Qual
1,2-Dichloroethane-d4	103	73-145			Dibromofluoromethane	99	81-135		
Toluene-d8	103	83-119			1,4-Bromofluorobenzene	100	74-110		

RL - Reporting Limit    DF - Dilution Factor    Qual - Qualifiers



Quality Control - Spike/Spike Duplicate

09-02-2080-3

Stratus Environmental, inc.  
3330 Cameron Park Drive, Suite 550  
Cameron Park, CA 95682-8861

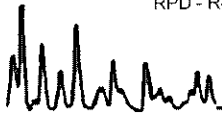
Date Received: 02/25/09  
Work Order No: 09-02-2184  
Preparation: EPA 5030B  
Method: EPA 8015B (M)

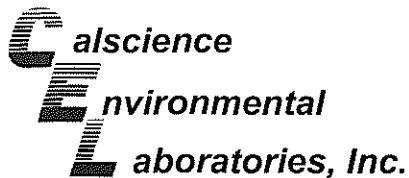
Project BP 6002

Quality Control Sample ID	Matrix	Instrument	Date Prepared	Date Analyzed	MS/MSD Batch Number
09-02-2080-3	Aqueous	GC 4	02/27/09	02/27/09	090227S01

Parameter	MS %REC	MSD %REC	%REC CL	RPD	RPD CL	Qualifiers
Gasoline Range Organics (C6-C12)	112	108	38-134	4	0-25	

RPD - Relative Percent Difference , CL - Control Limit





## Quality Control - Spike/Spike Duplicate

Stratus Environmental, inc.  
3330 Cameron Park Drive, Suite 550  
Cameron Park, CA 95682-8861

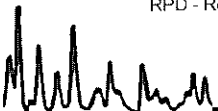
Date Received: 02/25/09  
Work Order No: 09-02-2184  
Preparation: EPA 5030B  
Method: EPA 8260B

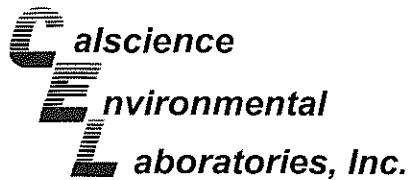
Project BP 6002

Quality Control Sample ID	Matrix	Instrument	Date Prepared	Date Analyzed	MS/MSD Batch Number
09-02-2080-3	Aqueous	GC/MS BB	03/03/09	03/04/09	090303S02

Parameter	MS %REC	MSD %REC	%REC CL	RPD	RPD CL	Qualifiers
Benzene	112	111	86-122	0	0-8	
Carbon Tetrachloride	112	119	78-138	6	0-9	
Chlorobenzene	110	110	90-120	0	0-9	
1,2-Dibromoethane	108	107	70-130	1	0-30	
1,2-Dichlorobenzene	110	112	89-119	2	0-10	
1,1-Dichloroethene	118	116	52-142	2	0-23	
Ethylbenzene	104	102	70-130	2	0-30	
Toluene	108	107	85-127	1	0-12	
Trichloroethene	107	107	78-126	0	0-10	
Vinyl Chloride	108	96	56-140	11	0-21	
Methyl-t-Butyl Ether (MTBE)	103	104	64-136	1	0-28	
Tert-Butyl Alcohol (TBA)	105	106	27-183	0	0-60	
Diisopropyl Ether (DIPE)	104	108	78-126	4	0-16	
Ethyl-t-Butyl Ether (ETBE)	103	107	67-133	4	0-21	
Tert-Amyl-Methyl Ether (TAME)	97	98	63-141	1	0-21	
Ethanol	109	100	11-167	9	0-64	

RPD - Relative Percent Difference , CL - Control Limit





## Quality Control - Spike/Spike Duplicate

Stratus Environmental, inc.  
3330 Cameron Park Drive, Suite 550  
Cameron Park, CA 95682-8861

Date Received: 02/25/09  
Work Order No: 09-02-2184  
Preparation: EPA 5030B  
Method: EPA 8260B

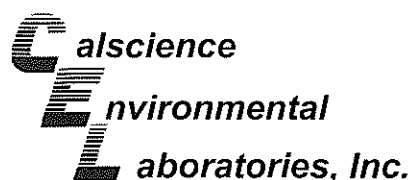
Project BP 6002

Quality Control Sample ID	Matrix	Instrument	Date Prepared	Date Analyzed	MS/MSD Batch Number
09-03-0234-5	Aqueous	GC/MS BB	03/04/09	03/04/09	090304S01

Parameter	MS %REC	MSD %REC	%REC CL	RPD	RPD CL	Qualifiers
Benzene	104	105	86-122	0	0-8	
Carbon Tetrachloride	104	105	78-138	1	0-9	
Chlorobenzene	104	103	90-120	1	0-9	
1,2-Dibromoethane	100	97	70-130	3	0-30	
1,2-Dichlorobenzene	103	105	89-119	2	0-10	
1,1-Dichloroethene	105	99	52-142	5	0-23	
Ethylbenzene	96	93	70-130	3	0-30	
Toluene	100	99	85-127	1	0-12	
Trichloroethene	100	100	78-126	0	0-10	
Vinyl Chloride	95	98	56-140	3	0-21	
Methyl-t-Butyl Ether (MTBE)	92	94	64-136	3	0-28	
Tert-Butyl Alcohol (TBA)	110	110	27-183	1	0-60	
Diisopropyl Ether (DIPE)	96	96	78-126	0	0-16	
Ethyl-t-Butyl Ether (ETBE)	93	94	67-133	1	0-21	
Tert-Amyl-Methyl Ether (TAME)	89	90	63-141	2	0-21	
Ethanol	111	112	11-167	1	0-64	

RPD - Relative Percent Difference , CL - Control Limit



**Quality Control - Spike/Spike Duplicate**

09-02-2194-11

Stratus Environmental, inc.  
3330 Cameron Park Drive, Suite 550  
Cameron Park, CA 95682-8861

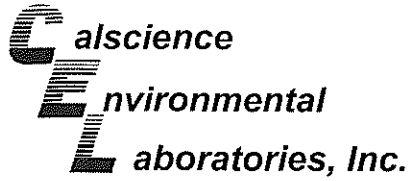
Date Received: 02/25/09  
Work Order No: 09-02-2184  
Preparation: EPA 5030B  
Method: EPA 8260B

Project BP 6002

Quality Control Sample ID	Matrix	Instrument	Date Prepared	Date Analyzed	MS/MSD Batch Number
09-02-2194-11	Aqueous	GC/MS BB	03/04/09	03/05/09	090304S02

Parameter	MS %REC	MSD %REC	%REC CL	RPD	RPD CL	Qualifiers
Benzene	102	105	86-122	3	0-8	
Carbon Tetrachloride	99	109	78-138	10	0-9	BA,AY
Chlorobenzene	102	103	90-120	1	0-9	
1,2-Dibromoethane	99	103	70-130	4	0-30	
1,2-Dichlorobenzene	103	108	89-119	4	0-10	
1,1-Dichloroethene	100	97	52-142	3	0-23	
Ethylbenzene	94	92	70-130	2	0-30	
Toluene	96	96	85-127	0	0-12	
Trichloroethene	96	99	78-126	3	0-10	
Vinyl Chloride	95	91	56-140	5	0-21	
Methyl-t-Butyl Ether (MTBE)	99	103	64-136	4	0-28	
Tert-Butyl Alcohol (TBA)	103	103	27-183	0	0-60	
Diisopropyl Ether (DIPE)	97	103	78-126	6	0-16	
Ethyl-t-Butyl Ether (ETBE)	97	102	67-133	5	0-21	
Tert-Amyl-Methyl Ether (TAME)	90	93	63-141	3	0-21	
Ethanol	99	89	11-167	11	0-64	

RPD - Relative Percent Difference, CL - Control Limit



Quality Control - LCS/LCS Duplicate

10-10-09

Stratus Environmental, inc.  
3330 Cameron Park Drive, Suite 550  
Cameron Park, CA 95682-8861

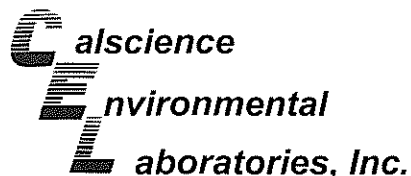
Date Received: N/A  
Work Order No: 09-02-2184  
Preparation: EPA 5030B  
Method: EPA 8015B (M)

Project: BP 6002

Quality Control Sample ID	Matrix	Instrument	Date Prepared	Date Analyzed	LCS/LCSD Batch Number
099-12-695-453	Aqueous	GC 4	02/27/09	02/27/09	090227B01

Parameter	LCS %REC	LCSD %REC	%REC CL	RPD	RPD CL	Qualifiers
Gasoline Range Organics (C6-C12)	114	111	78-120	3	0-20	

RPD - Relative Percent Difference , CL - Control Limit



## Quality Control - LCS/LCS Duplicate

Stratus Environmental, inc.  
3330 Cameron Park Drive, Suite 550  
Cameron Park, CA 95682-8861

Date Received: N/A  
Work Order No: 09-02-2184  
Preparation: EPA 5030B  
Method: EPA 8260B

Project: BP 6002

Quality Control Sample ID	Matrix	Instrument	Date Prepared	Date Analyzed	LCS/LCSD Batch Number		
099-12-703-747	Aqueous	GC/MS BB	03/03/09	03/04/09	090303L02		
Parameter	LCS %REC	LCSD %REC	%REC CL	ME CL	RPD	RPD CL	Qualifiers
Benzene	113	113	87-117	82-122	0	0-7	
Carbon Tetrachloride	116	115	78-132	69-141	1	0-8	
Chlorobenzene	111	112	88-118	83-123	1	0-8	
1,2-Dibromoethane	112	108	80-120	73-127	4	0-20	
1,2-Dichlorobenzene	112	112	88-118	83-123	0	0-8	
1,1-Dichloroethene	120	119	71-131	61-141	1	0-14	
Ethylbenzene	106	107	80-120	73-127	1	0-20	
Toluene	109	108	85-127	78-134	0	0-7	
Trichloroethene	121	122	85-121	79-127	1	0-11	LQ
Vinyl Chloride	120	118	64-136	52-148	2	0-10	
Methyl-t-Butyl Ether (MTBE)	106	101	67-133	56-144	4	0-16	
Tert-Butyl Alcohol (TBA)	104	109	34-154	14-174	4	0-19	
Diisopropyl Ether (DIPE)	104	100	80-122	73-129	4	0-8	
Ethyl-t-Butyl Ether (ETBE)	103	100	73-127	64-136	3	0-11	
Tert-Amyl-Methyl Ether (TAME)	99	95	69-135	58-146	5	0-12	
Ethanol	109	109	34-124	19-139	0	0-44	

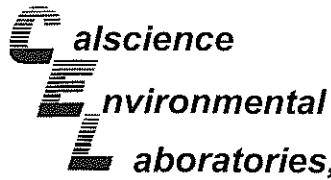
Total number of LCS compounds : 16

Total number of ME compounds : 1

Total number of ME compounds allowed : 1

LCS ME CL validation result : Pass

RPD - Relative Percent Difference, CL - Control Limit



## Quality Control - LCS/LCS Duplicate

Stratus Environmental, inc.  
3330 Cameron Park Drive, Suite 550  
Cameron Park, CA 95682-8861

Date Received: N/A  
Work Order No: 09-02-2184  
Preparation: EPA 5030B  
Method: EPA 8260B

Project: BP 6002

Quality Control Sample ID	Matrix	Instrument	Date Prepared	Date Analyzed	LCS/LCSD Batch Number		
099-12-703-748	Aqueous	GC/MS BB	03/04/09	03/04/09	090304L01		
Parameter	LCS %REC	LCSD %REC	%REC CL	ME CL	RPD	RPD CL	Qualifiers
Benzene	101	102	87-117	82-122	1	0-7	
Carbon Tetrachloride	106	104	78-132	69-141	3	0-8	
Chlorobenzene	100	101	88-118	83-123	1	0-8	
1,2-Dibromoethane	99	97	80-120	73-127	2	0-20	
1,2-Dichlorobenzene	103	102	88-118	83-123	1	0-8	
1,1-Dichloroethene	106	107	71-131	61-141	1	0-14	
Ethylbenzene	95	98	80-120	73-127	4	0-20	
Toluene	98	99	85-127	78-134	2	0-7	
Trichloroethene	102	101	85-121	79-127	1	0-11	
Vinyl Chloride	94	103	64-136	52-148	9	0-10	
Methyl-t-Butyl Ether (MTBE)	92	90	67-133	56-144	3	0-16	
Tert-Butyl Alcohol (TBA)	99	96	34-154	14-174	4	0-19	
Diisopropyl Ether (DIPE)	95	90	80-122	73-129	6	0-8	
Ethyl-t-Butyl Ether (ETBE)	95	89	73-127	64-136	6	0-11	
Tert-Amyl-Methyl Ether (TAME)	88	87	69-135	58-146	2	0-12	
Ethanol	92	112	34-124	19-139	19	0-44	

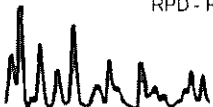
Total number of LCS compounds : 16

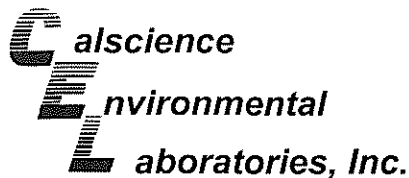
Total number of ME compounds : 0

Total number of ME compounds allowed : 1

LCS ME CL validation result : Pass

RPD - Relative Percent Difference , CL - Control Limit





## Quality Control - LCS/LCS Duplicate

Stratus Environmental, inc.  
3330 Cameron Park Drive, Suite 550  
Cameron Park, CA 95682-8861

Date Received: N/A  
Work Order No: 09-02-2184  
Preparation: EPA 5030B  
Method: EPA 8260B

Project: BP 6002

Quality Control Sample ID	Matrix	Instrument	Date Prepared	Date Analyzed	LCS/LCSD Batch Number		
099-12-703-749	Aqueous	GC/MS BB	03/04/09	03/05/09	090304L02		
Parameter	LCS %REC	LCSD %REC	%REC CL	ME_CL	RPD	RPD_CL	Qualifiers
Benzene	104	104	87-117	82-122	0	0-7	
Carbon Tetrachloride	105	105	78-132	69-141	0	0-8	
Chlorobenzene	103	103	88-118	83-123	0	0-8	
1,2-Dibromoethane	100	100	80-120	73-127	0	0-20	
1,2-Dichlorobenzene	105	106	88-118	83-123	2	0-8	
1,1-Dichloroethene	112	112	71-131	61-141	1	0-14	
Ethylbenzene	98	97	80-120	73-127	1	0-20	
Toluene	100	100	85-127	78-134	0	0-7	
Trichloroethene	119	116	85-121	79-127	3	0-11	
Vinyl Chloride	105	107	64-136	52-148	2	0-10	
Methyl-t-Butyl Ether (MTBE)	96	97	67-133	56-144	1	0-16	
Tert-Butyl Alcohol (TBA)	97	96	34-154	14-174	2	0-19	
Diisopropyl Ether (DIPE)	97	97	80-122	73-129	0	0-8	
Ethyl-t-Butyl Ether (ETBE)	96	97	73-127	64-136	1	0-11	
Tert-Amyl-Methyl Ether (TAME)	91	91	69-135	58-146	1	0-12	
Ethanol	101	100	34-124	19-139	1	0-44	

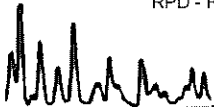
Total number of LCS compounds : 16

Total number of ME compounds : 0

Total number of ME compounds allowed : 1

LCS ME CL validation result : Pass

RPD - Relative Percent Difference, CL - Control Limit

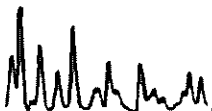


## Glossary of Terms and Qualifiers



Work Order Number: 09-02-2184

<u>Qualifier</u>	<u>Definition</u>
AX	Sample too dilute to quantify surrogate.
BA	There was no MS/MSD analyzed with this batch due to insufficient sample volume (NR = not reported). See Blank Spike/Blank Spike Duplicate.
BA,AY	Relative percent difference out of control, matrix interference suspected.
BB	Sample > 4x spike concentration.
BF	Reporting limits raised due to high hydrocarbon background.
BH	Reporting limits raised due to high level of non-target analytes.
BU	Sample analyzed after holding time expired.
BV	Sample received after holding time expired.
BY	Sample received at improper temperature.
CL	Initial analysis within holding time but required dilution.
CQ	Analyte concentration greater than 10 times the blank concentration.
CU	Surrogate concentration diluted to not detectable during analysis.
DF	Reporting limits elevated due to matrix interferences.
ET	Sample was extracted past end of recommended max. holding time.
EY	Result exceeds normal dynamic range; reported as a min est.
GS	Internal standard recovery is outside method recovery limit.
IB	CCV recovery above limit; analyte not detected.
IH	Calibrtn. verif. recov. below method CL for this analyte.
IJ	Calibrtn. verif. recov. above method CL for this analyte.
J,DX	J=EPA Flag -Estimated value; DX= Value < lowest standard (MQL), but > than MDL.
LA	Confirmatory analysis was past holding time.
LG	Surrogate recovery below the acceptance limit.
LH	Surrogate recovery above the acceptance limit.
LM,AY	MS and/or MSD above acceptance limits. See Blank Spike (LCS). Matrix interference suspected.
LN,AY	MS and/or MSD below acceptance limits. See Blank Spike (LCS). Matrix interference suspected.
LQ	LCS recovery above method control limits.
LR	LCS recovery below method control limits.



Work Order Number: 09-02-2184

---

<u>Qualifier</u>	<u>Definition</u>
MB	Analyte present in the method blank.
MG	Analyte is a suspected lab contaminate.
PC	Sample taken from VOA vial with air bubble > 6mm diameter.
PI	Primary and confirm results varied by > than 40% RPD.
RB	RPD exceeded method control limit; % recoveries within limits.





# Laboratory Management Program LaMP Chain of Custody Record

2184

BP/ARC Project Name: BP 6002  
 BP/ARC Facility No: 6002

Req Due Date (mm/dd/yy): 14 Day TAT Rush TAT: Yes  No   
 Lab Work Order Number: \_\_\_\_\_

Lab Name: CalScience	BP/ARC Facility Address: 6235 Seminary Avenue	Consultant/Contractor: Stratus Environmental Inc
Lab Address: 7440 Lincoln Way, Garden Grove, CA 92841	City, State, ZIP Code: Oakland Ca	Consultant/Contractor Project No:
Lab PM: Richard Vilafania	Lead Regulatory Agency: Alameda	Address: 3330 Cameron Park Drive, #550, Cameron Park, CA 95682
Lab Phone: 714-895-5494 Fax: 714-895-7501	California Global ID No.: T0600100105	Consultant/Contractor PM: Jay Johnson
Lab Shipping Acct:	Enfos Proposal No:	Phone: 530-676-6000 Fax: 530-676-6005
Lab Bottle Order No:	Accounting Mode: Provision <input checked="" type="checkbox"/> OOC-BU <input type="checkbox"/> OOC-RM <input type="checkbox"/>	Email EDD To: <a href="mailto:chuff@stratusinc.net">chuff@stratusinc.net</a>
Other Info:	Stage: BP/ARC WBS Stage Activity: BP/ARC WBS Activity	Invoice To: BP/ARC <input checked="" type="checkbox"/> Contractor <input type="checkbox"/>

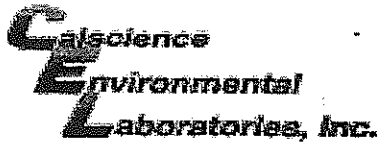
BP/ARC EBM: Paul Supple				Matrix		No. Containers / Preservative							Requested Analyses						Report Type & QC Level									
Lab No.	Sample Description	Date	Time	Soil / Solid	Water / Liquid	Air / Vapor	Total Number of Containers	Unpreserved	H <sub>2</sub> SO <sub>4</sub>	HNO <sub>3</sub>	HCl	Methanol	GRO by 8015M	BTEX/S FO* by 8260B	Ethanol by 8260B	EDB by 8260B	1,2-DCA by 8260B											
1	MW-5	2-23-09	10:54	X			6				X		X	X	X	X												
2	VW-1	↓	10:35	X			6				X		X	X	X	X												
3	VW-4	↓	10:44	X			6				X		X	X	X	X												
4	TB-6002-	↓	600	X			2				X																	ON HOLD

Sampler's Name: <u>Jerison 2/23/09</u>	Relinquished By / Affiliation: <u>Stacy Gonzalez</u>	Date: <u>2-23-09</u>	Time:	Accepted By / Affiliation: <u>Wobahn CG</u>	Date: <u>2/25/09</u>	Time: <u>1030</u>
Sampler's Company: Stratus Environmental Inc.						
Shipment Method: <u>GLO</u> Ship Date:						
Shipment Tracking No: <u>105866817</u>						

Special Instructions: TB Sample ON HOLD! Cc results to [rmiller@broadbentinc.com](mailto:rmiller@broadbentinc.com)

THIS LINE - LAB USE ONLY: Custody Seals in Place: Yes / No    Temp Blank: Yes / No    Cooler Temp on Receipt: \_\_\_\_\_ °F/C    Trip Blank: Yes / No    MS/MSD Sample Submitted: Yes / No





WORK ORDER #: 09-02-2184

**SAMPLE RECEIPT FORM**

Cooler 1 of 1

CLIENT: STRATUS

DATE: 2/25/09

**TEMPERATURE:** (Criteria: 0.0 °C – 6.0 °C, not frozen)

Temperature 1.9 °C - 0.2 °C (CF) = 1.7 °C  Blank  Sample

Sample(s) outside temperature criteria (PM/APM contacted by: \_\_\_\_\_).

Sample(s) outside temperature criteria but received on ice/chilled on same day of sampling.

Received at ambient temperature, placed on ice for transport by Courier.

Ambient Temperature:  Air  Filter  Metals Only  PCBs Only Initial: WB

**CUSTODY SEALS INTACT:**

Cooler  \_\_\_\_\_  No (Not Intact)  Not Present  N/A Initial: WB

Sample  \_\_\_\_\_  No (Not Intact)  Not Present Initial: ju

**SAMPLE CONDITION:**

	Yes	No	N/A
Chain-Of-Custody (COC) document(s) received with samples.....	<input checked="" type="checkbox"/>	<input type="checkbox"/>	<input type="checkbox"/>
COC document(s) received complete.....	<input checked="" type="checkbox"/>	<input type="checkbox"/>	<input type="checkbox"/>
Sampler's name indicated on COC.....	<input checked="" type="checkbox"/>	<input type="checkbox"/>	<input type="checkbox"/>
Sample container label(s) consistent with COC.....	<input checked="" type="checkbox"/>	<input type="checkbox"/>	<input type="checkbox"/>
Sample container(s) intact and good condition.....	<input checked="" type="checkbox"/>	<input type="checkbox"/>	<input type="checkbox"/>
Correct containers and volume for analyses requested.....	<input checked="" type="checkbox"/>	<input type="checkbox"/>	<input type="checkbox"/>
Analyses received within holding time.....	<input checked="" type="checkbox"/>	<input type="checkbox"/>	<input type="checkbox"/>
Proper preservation noted on COC or sample container.....	<input checked="" type="checkbox"/>	<input type="checkbox"/>	<input type="checkbox"/>
Volatile analysis container(s) free of headspace.....	<input checked="" type="checkbox"/>	<input type="checkbox"/>	<input type="checkbox"/>
Tedlar bag(s) free of condensation.....	<input type="checkbox"/>	<input type="checkbox"/>	<input checked="" type="checkbox"/>

**CONTAINER TYPE:**

Solid:  4ozCGJ  8ozCGJ  16ozCGJ  Sleeve  EnCores®  TerraCores®  \_\_\_\_\_

Water:  VOA  VOA<sub>h</sub>  VOA<sub>na2</sub>  125AGB  125AGB<sub>h</sub>  125AGB<sub>po4</sub>  1AGB  1AGB<sub>na2</sub>

1AGB<sub>s</sub>  500AGB  500AGB<sub>s</sub>  250CGB  250CGB<sub>s</sub>  1PB  500PB  500PB<sub>na</sub>  250PB

250PB<sub>n</sub>  125PB  125PB<sub>znna</sub>  100PBsterile  100PB<sub>na2</sub>  \_\_\_\_\_  \_\_\_\_\_  \_\_\_\_\_

Air:  Tedlar®  Summa®  \_\_\_\_\_

Container: C:Clear A:Amber P:Poly/Plastic G:Glass J:Jar B:Bottle

Preservative: h:HCL n:HNO<sub>3</sub> na<sub>2</sub>:Na<sub>2</sub>S<sub>2</sub>O<sub>3</sub> na:NaOH po<sub>4</sub>:H<sub>3</sub>PO<sub>4</sub> s:H<sub>2</sub>SO<sub>4</sub> znna:ZnAc<sub>2</sub>+NaOH

Checked/Labeled by: [Signature]

Reviewed by: [Signature]

Scanned by: [Signature]

## ATTACHMENT

### FIELD PROCEDURES FOR GROUNDWATER SAMPLING

---

The sampling procedures for groundwater monitoring events are contained in this appendix.

#### **Groundwater and Liquid-Phase Petroleum Hydrocarbon Depth Assessment**

Prior to measuring the depth to liquid in the well, the well caps are removed and the liquid level allowed to stabilize. A water/hydrocarbon interface probe is used to assess the liquid-phase petroleum hydrocarbon (LPH) thickness, if present, and a water level indicator is used to measure the groundwater depth in monitoring wells that do not contain LPH. Depth to groundwater or LPH is measured from a datum point at the top of each monitoring well casing. The datum point is typically a notch cut in the north side of the casing edge. If a water level indicator is used, the tip is subjectively analyzed for hydrocarbon sheen.

#### **Subjective Analysis of Groundwater**

Prior to purging, a water sample is collected from the monitoring well for subjective assessment. The sample is retrieved by gently lowering a clean, disposable bailer to approximately one-half the bailer length past the air/liquid interface. The bailer is then retrieved, and the sample contained within the bailer is examined for floating LPH and the appearance of a LPH sheen.

#### **Monitoring Well Sampling**

In many cases, determining whether to purge or not to purge wells prior to sample collection is made in the field and is often based on depth to water relative to the screen interval of the well. Site-specific field data sheets present details associated with the purge method and equipment used.

Monitoring wells, when purged, use a pump or bailer until pH, temperature, and conductivity of the purge water has stabilized and a minimum of three well volumes of water has been removed. Field measuring equipment is calibrated and maintained according to the manufacturer's instructions. If three well volumes cannot be removed in one half hour's time the well is allowed to recharge to 80% of original level. After recharging, a groundwater sample is then collected from each of the wells using disposable bailers.

A Teflon bailer, electric submersible or bladder pump will be the only equipment used for well sampling. When samples for volatile organic analysis are being collected, the pump flow will be regulated at approximately 100 milliliters per minute to minimize pump effluent turbulence and aeration. Glass bottles of at least 40-milliliters volume and fitted with Teflon-lined septa will be used in sampling for volatile organics. These

bottles will be filled completely to prevent air accumulation in the bottle. A positive meniscus forms when the bottle is completely full. A convex Teflon septum will be placed over the positive meniscus to eliminate air. After the bottle is capped, it is inverted and tapped to verify that it contains no air bubbles. The sample containers for other parameters will be filled, filtered as required, and capped. Glass and plastic bottles used by Stratus to collect groundwater samples are supplied by the laboratory.

### **Groundwater Sample Labeling and Preservation**

Samples are collected in appropriate containers supplied by the laboratory. All required chemical preservation is added to the bottles prior to delivery to Stratus. Sample label information includes a unique sample identification number, job identification number, date, and time. After labeling, all groundwater samples are placed in a Ziploc<sup>®</sup> type bag and placed in an ice chest cooled to approximately 4° Celsius. Upon arriving at Stratus' office the samples are transferred to a locked refrigerator cooled to approximately 4° Celsius. Chemical preservation is controlled by the required analysis and is noted on the chain-of-custody form. Trip and temperature blanks supplied by the laboratory accompany the groundwater sample containers and groundwater samples.

### **Sample Identification and Chain-of-Custody Procedures**

Sample identification and chain-of-custody procedures document sample possession from the time of collection to ultimate disposal. Each sample container submitted for analysis has a label affixed to identify the job number, sampler, date and time of sample collection, and a sample number unique to that sample. This information, in addition to a description of the sample, field measurements made, sampling methodology, names of on-site personnel, and any other pertinent field observations, is recorded in the field records. The samples are analyzed by a California-certified laboratory.

A chain-of-custody form is used to record possession of the sample from time of collection to its arrival at the laboratory. When the samples are shipped, the person in custody of them relinquishes the samples by signing the chain-of-custody form and noting the time. The sample-control officer at the laboratory verifies sample integrity and confirms that the samples are collected in the proper containers, preserved correctly, and contain adequate volumes for analysis. These conditions are noted on a Laboratory Sample Receipt Checklist that becomes part of the laboratory report upon request.

If these conditions are met, each sample is assigned a unique log number for identification throughout analysis and reporting. The log number is recorded on the chain-of-custody form and in the legally-required log book maintained by the laboratory. The sample description, date received, client's name, and other relevant information is also recorded.

### **Equipment Cleaning**

All reusable sampling equipments are cleaned using phosphate-free detergents and rinsed with de-ionized water.

**APPENDIX B**

**GEOTRACKER UPLOAD CONFIRMATION**

---

STATE WATER RESOURCES CONTROL BOARD  
**GEOTRACKER ESI**

UPLOADING A GEO\_WELL FILE

**SUCCESS**

Processing is complete. No errors were found!  
Your file has been successfully submitted!

<b><u>Submittal Type:</u></b>	<b>GEO_WELL</b>
<b><u>Submittal Title:</u></b>	<b>1Q09 GEO_WELL 6002</b>
<b><u>Facility Global ID:</u></b>	<b>T0600100105</b>
<b><u>Facility Name:</u></b>	<b>ARCO #6002</b>
<b><u>File Name:</u></b>	<b>GEO_WELL.zip</b>
<b><u>Organization Name:</u></b>	<b>Broadbent &amp; Associates, Inc.</b>
<b><u>Username:</u></b>	<b>BROADBENT-C</b>
<b><u>IP Address:</u></b>	<b>67.118.40.90</b>
<b><u>Submittal Date/Time:</u></b>	<b>4/23/2009 10:00:30 AM</b>
<b><u>Confirmation Number:</u></b>	<b>1008846461</b>

STATE WATER RESOURCES CONTROL BOARD  
**GEOTRACKER ESI**

UPLOADING A EDF FILE

**SUCCESS**

Processing is complete. No errors were found!  
Your file has been successfully submitted!

<b><u>Submittal Type:</u></b>	EDF - Monitoring Report - Quarterly
<b><u>Submittal Title:</u></b>	1Q09 GW Monitoring
<b><u>Facility Global ID:</u></b>	T0600100105
<b><u>Facility Name:</u></b>	ARCO #6002
<b><u>File Name:</u></b>	09022184.zip
<b><u>Organization Name:</u></b>	Broadbent & Associates, Inc.
<b><u>Username:</u></b>	BROADBENT-C
<b><u>IP Address:</u></b>	67.118.40.90
<b><u>Submittal Date/Time:</u></b>	4/23/2009 10:01:56 AM
<b><u>Confirmation Number:</u></b>	<b>6350099861</b>

[VIEW QC REPORT](#)

[VIEW DETECTIONS REPORT](#)

Copyright © 2008 State of California