



Atlantic Richfield Company
(a BP affiliated company)

P.O. Box 1257
San Ramon, CA 94583
Phone: (925) 275-3801
Fax: (925) 275-3815

30 October 2007

Re: Third Quarter 2007 Ground-Water Monitoring Report
Former Atlantic Richfield Company Station #6002
6235 Seminary Avenue
Oakland, California
ACEH Case #RO0000163

“I declare, that to the best of my knowledge at the present time, that the information and/or recommendations contained in the attached document are true and correct.”

Submitted by:

Paul Supple
Environmental Business Manger

RECEIVED

10:19 am, Nov 02, 2007

Alameda County
Environmental Health



Third Quarter 2007 Ground-Water Monitoring Report
Former Atlantic Richfield Company Station #6002
6235 Seminary Avenue
Oakland, California

Prepared for

Mr. Paul Supple
Environmental Business Manager
Atlantic Richfield Company
P.O. Box 1257
San Ramon, California 94583

Prepared by



1324 Mangrove Avenue, Suite 212
Chico, California 95926
(530) 566-1400
www.broadbentinc.com

30 October 2007

Project No. 06-08-634

30 October 2007

Project No. 06-08-634

Atlantic Richfield Company
P.O. Box 1257
San Ramon, CA 94583
Submitted via ENFOS

Attn.: Mr. Paul Supple

Re: Third Quarter 2007 Ground-Water Monitoring Report, Former Atlantic Richfield Company (a BP affiliated company) Station #6002, 6235 Seminary Avenue, Oakland, Alameda County, California; ACEH Case #RO0000163

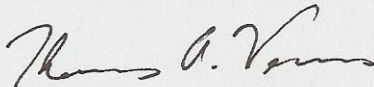
Dear Mr. Supple:

Attached is the *Third Quarter 2007 Ground-Water Monitoring Report* for Former Atlantic Richfield Company Station #6002 (herein referred to as Station #6002) located at 6235 Seminary Avenue, Oakland, California (Site). This report presents a summary of results from ground-water monitoring and sampling conducted during the Third Quarter of 2007.


Should you have questions regarding the work performed or results obtained, please do not hesitate to contact us at (530) 566-1400.

Sincerely,

BROADBENT & ASSOCIATES, INC.



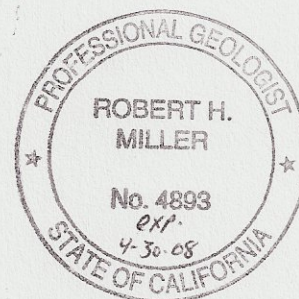
Thomas A. Venus, P.E.
Senior Engineer



Robert H. Miller, P.G., C.HG.
Principal Hydrogeologist

Enclosures

cc: Mr. Steven Plunkett, Alameda County Environmental Health (Submitted via ACEH ftp site)
Electronic copy uploaded to GeoTracker



STATION # 6002 QUARTERLY GROUND-WATER MONITORING REPORT

Facility: #6002	Address:	6235 Seminary Avenue
Environmental Business Manager:		Mr. Paul Supple
Consulting Co./Contact Persons:		Broadbent & Associates, Inc.(BAI)/Rob Miller & Tom Venus (530) 566-1400
Consultant Project No.:		06-08-634
Primary Agency/Regulatory ID No.:		Alameda County Environmental Health (ACEH) ACEH Case #RO0000163
Facility Permits/Permitting Agency:		NA

WORK PERFORMED THIS QUARTER (Third Quarter 2007):

1. Prepared and submitted the Second Quarter 2007 Ground-Water Monitoring Report.
2. Conducted ground-water monitoring/sampling for Third Quarter 2007. Work performed by Stratus Environmental, Inc. (Stratus) on 8 August 2007.

WORK PROPOSED FOR NEXT QUARTER (Fourth Quarter 2007):

1. Prepare and submit Third Quarter 2007 Ground-Water Monitoring Report (contained herein).
2. Conduct ground-water monitoring/sampling for Fourth Quarter 2007.

QUARTERLY RESULTS SUMMARY:

Current phase of project:	Ground-Water Monitoring/Sampling
Frequency of ground-water monitoring:	Quarterly: Wells MW-3, MW-4, MW-5, MW-6, MW-7, MW-8, VW-1, VW-3, VW-4
Frequency of ground-water sampling:	Quarterly: Wells MW-5, VW-1, VW-4 Annually (3Q): Wells MW-3, MW-4, MW-6, MW-7, MW-8
Is free product (FP) present on-site:	No
Bulk Soil removed to Date:	Approximately 370 cubic yards of TPH-impacted soil
Current remediation techniques:	NA
Depth to ground water (below TOC):	7.01 ft (MW-6) to 12.95 ft (MW-4)
General ground-water flow direction:	West
Approximate hydraulic gradient:	0.05 ft/ft

DISCUSSION:

Third quarter 2007 ground-water monitoring and sampling was conducted at Former ARCO Service Station #6002 on 8 August 2007 by Stratus personnel. Water levels were gauged in seven of the nine wells associated with Station #6002: A depth to water measurement was not taken from well MW-8 because it could not be located due to overgrown vegetation, vehicles, and vehicle parts near its location; A depth to water measurement could not be taken from well MW-7 as it was dry. No other significant irregularities were noted during water level gauging. Depth to water measurements ranged from 7.01 ft at well MW-6 to 12.95 ft. at well MW-4. Resulting ground-water surface elevations ranged from 250.93 ft above mean sea level (msl) in up-gradient well MW-6 to 235.67 ft above msl at down-gradient well MW-4. Water level elevations were within the historic minimum and maximum ranges, with the exception of a recorded historic minimum value of 243.16 ft above msl in well VW-3. Water level elevations yielded a potentiometric ground-water flow direction and gradient to the west at approximately 0.05 ft/ft, generally consistent with the historical data (see Table 3). Ground-water monitoring field data sheets are provided within Appendix A. Measured depths to water and respective ground-water elevations are summarized in Table 1. Potentiometric ground-water elevation contours are presented in Drawing 1.

Ground-water samples were collected from wells MW-3, MW-4, MW-5, MW-6, VW-1, and VW-4. Samples were not collected from well MW-7 due to dry conditions or well MW-8, which was obstructed by vehicles and overgrown vegetation. No other irregularities were noted during sampling. Samples were submitted under chain-of-custody protocol to Test America Analytical Testing Corporation (Morgan Hill, California) for analysis of Gasoline Range Organics (GRO, C4-C12) by LUFT GCMS method; Benzene, Toluene, Ethylbenzene, and Total Xylenes (BTEX) by EPA Method 8260B; and tert-Amyl methyl ether (TAME), tert-Butyl alcohol (TBA), Di-isopropyl ether (DIPE), 1,2-Dibromomethane (EDB), 1,2-Dichloroethane (1,2-DCA), Ethanol, Ethyl tert-butyl ether (ETBE), and Methyl tert-butyl ether (MTBE) by EPA Method 8260B. No significant irregularities were noted during analysis of the samples by the laboratory. Ground-water sampling field data sheets and the laboratory analytical report, including chain-of-custody documentation, are provided in Appendix A.

Gasoline Range Organics were detected above the laboratory reporting limit in three of the six wells sampled this quarter at concentrations up to 4,100 micrograms per liter ($\mu\text{g/L}$) in MW-5. Ethylbenzene was detected above the laboratory reporting limit in one of the six wells sampled at a concentration of 4.1 $\mu\text{g/L}$ in well MW-5. Total Xylenes were detected above the laboratory reporting limit in one of the six wells sampled at a concentration of 1.3 $\mu\text{g/L}$ in well MW-5. TBA was detected above laboratory reporting limits in one of the six wells sampled at a concentration of 1,300 $\mu\text{g/L}$ in well VW-4. ETBE was detected above the laboratory reporting limits in one of the six wells sampled a concentration of 1.2 $\mu\text{g/L}$ in VW-4. MTBE was detected above the laboratory reporting limit in three of the six wells sampled at concentrations up to 11 $\mu\text{g/L}$ in MW-5. The remaining fuel additives and oxygenates were not detected above their laboratory reporting limits in the six wells sampled this quarter.

Detected analyte concentrations were within the historic minimum and maximum ranges recorded for each well with the exception of a recorded historic minimum MTBE value at 1.9 $\mu\text{g/L}$ in well VW-1. Historic laboratory analytical results are summarized in Table 1 and Table 2. The most recent GRO, Benzene, and MTBE concentrations are also presented in Drawing 1. A copy of the Laboratory Analytical Report, including chain-of-custody documentation, is provided in Appendix A. Ground-water monitoring data (GEO_WELL) and laboratory analytical results (EDF) were uploaded to the GeoTracker AB2886 database. Upload confirmation pages are provided in Appendix B.

CLOSURE:

The findings presented in this report are based upon: observations of Stratus field personnel (see Appendix A), the points investigated, and results of laboratory tests performed by Test America. Our services were performed in accordance with the generally accepted standard of practice at the time this report was written. No other warranty, expressed or implied was made. This report has been prepared for the exclusive use of Atlantic Richfield Company. It is possible that variations in soil or ground-water conditions could exist beyond points explored in this investigation. Also, changes in site conditions could occur in the future due to variations in rainfall, temperature, regional water usage, or other factors.

ATTACHMENTS:

Drawing 1. Ground-Water Elevation Contours and Analytical Summary Map, 8 August 2007, Former ARCO Service Station #6002, 6235 Seminary Avenue, Oakland, California

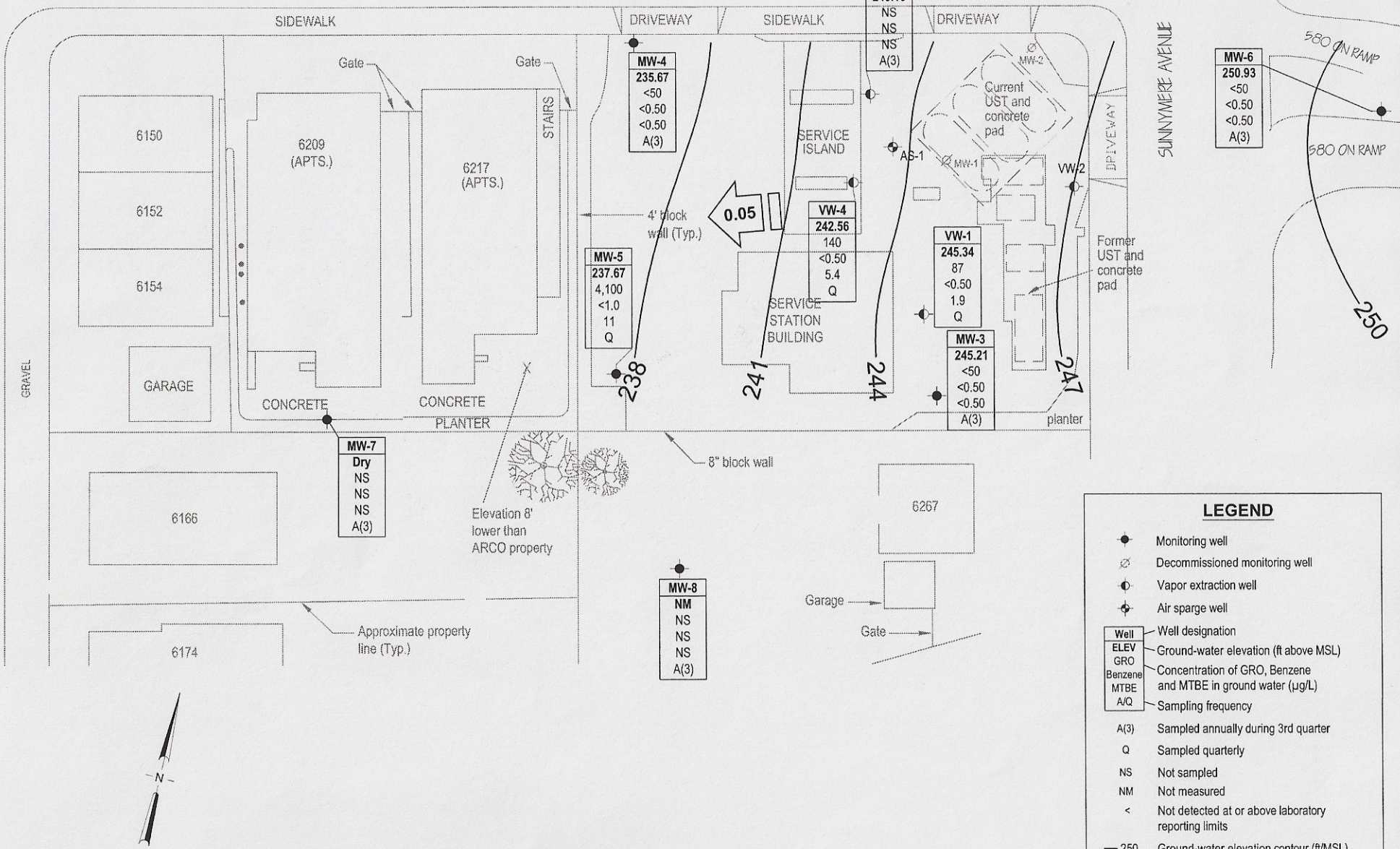
Table 1. Summary of Ground-Water Monitoring Data: Relative Water Elevations and Laboratory Analyses, Station #6002, 6235 Seminary Ave., Oakland, CA

- Table 2. Summary of Fuel Additives Analytical Data, Station #6002, 6235 Seminary Ave., Oakland, CA
- Table 3. Historical Ground-Water Flow Direction and Gradient, Station #6002, 6235 Seminary Avenue, Oakland, CA
- Appendix A. Stratus Ground-Water Sampling Data Package (Includes Field Data Sheets and Laboratory Analytical Report with Chain-of-Custody Documentation)
- Appendix B. GeoTracker Upload Confirmation

SEMINARY AVENUE

OVERDALE AVENUE

SUNNYMERE AVENUE



LEGEND

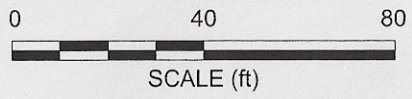
- Monitoring well
- ⊗ Decommissioned monitoring well
- ⊙ Vapor extraction well
- ⊕ Air sparge well

Well	Well designation
ELEV	Ground-water elevation (ft above MSL)
GRO	Concentration of GRO, Benzene and MTBE in ground water (µg/L)
Benzene	
MTBE	
A/Q	Sampling frequency

- A(3) Sampled annually during 3rd quarter
- Q Sampled quarterly
- NS Not sampled
- NM Not measured
- < Not detected at or above laboratory reporting limits

- 250 Ground-water elevation contour (ft/MSL)
- ← 0.05 Approximate ground-water flow direction and gradient (ft/ft)

NOTE: SITE MAP ADAPTED FROM CAMBRIA ENVIRONMENTAL FIGURES. SITE DIMENSIONS AND FACILITY LOCATIONS NOT VERIFIED.



BROADBENT & ASSOCIATES, INC.
 ENGINEERING, WATER RESOURCES & ENVIRONMENTAL
 1324 Mangrove Ave. Suite 212, Chico, California 95926
 Project No.: 06-08-634 Date: 9/18/07

Former ARCO Service Station #6002
 6235 Seminary Avenue
 Oakland, California

Ground-Water Elevation Contours
 and Analytical Summary Map
 8 August 2007

Drawing
1

Table 1. Summary of Ground-Water Monitoring Data: Relative Water Elevations and Laboratory Analyses

Station #6002, 6235 Seminary Ave., Oakland, CA

Well and Sample Date	P/NP	Comments	TOC (feet msl)	Top of Screen (ft bgs)	Bottom of Screen (ft bgs)	DTW (feet bgs)	Product Thickness (feet)	Water Level Elevation (feet msl)	Concentrations in (µg/L)						DO (mg/L)	pH
									GRO/TPHg	Benzene	Toluene	Ethyl-Benzene	Total Xylenes	MtBE		
AS-1																
6/29/1995	--		--	20.0	22.0	9.20	--	--	<50	1.6	<0.5	0.9	0.9	--	--	--
MW-1																
3/15/1995	--		247.06	4.5	24.5	7.37	--	239.69	13,000	1,200	44	770	1,100	--	--	--
5/30/1995	--		247.06	4.5	24.5	8.48	--	238.58	19,000	1,600	30	890	1,400	--	--	--
9/1/1995	--		247.06	4.5	24.5	9.47	--	237.59	14,000	1,300	28	480	780	24,000	--	--
11/13/1995	--	a, b	247.06	4.5	24.5	8.78	--	238.28	11,000	570	17	260	410	25,000	--	--
2/23/1996	--	d	247.06	4.5	24.5	--	--	--	--	--	--	--	--	--	--	--
MW-2																
3/15/1995	--		249.30	5.0	17.5	8.25	--	241.05	<50	<0.5	<0.5	<0.5	<0.5	--	--	--
5/30/1995	--		249.30	5.0	17.5	9.93	--	239.37	<50	<0.5	<0.5	<0.5	<0.5	--	--	--
9/1/1995	--		249.30	5.0	17.5	10.69	--	238.61	<50	<0.5	<0.5	<0.5	<0.5	<3	--	--
11/13/1995	--		249.30	5.0	17.5	10.32	--	238.98	<50	<0.5	<0.5	<0.5	<0.5	--	--	--
2/23/1996	--	d	249.30	5.0	17.5	--	--	--	--	--	--	--	--	--	--	--
MW-3																
3/15/1995	--		248.35	5.0	24.5	6.76	--	241.59	<50	<0.5	<0.5	<0.5	<0.5	--	--	--
5/30/1995	--		248.35	5.0	24.5	7.81	--	240.54	<50	<0.5	<0.5	<0.5	<0.5	--	--	--
9/1/1995	--		248.35	5.0	24.5	8.65	--	239.70	<50	<0.5	<0.5	<0.5	<0.5	<3	--	--
11/13/1995	--		248.35	5.0	24.5	8.25	--	240.10	120	45	0.7	<0.5	6.2	--	--	--
2/23/1996	--		248.35	5.0	24.5	6.64	--	241.71	<50	<0.5	<0.5	0.6	1.9	<3	--	--
5/10/1996	--		248.35	5.0	24.5	7.95	--	240.40	--	--	--	--	--	--	--	--
8/9/1996	--		248.35	5.0	24.5	8.06	--	240.29	--	--	--	--	--	--	--	--
11/8/1996	--	e	248.35	5.0	24.5	--	--	--	--	--	--	--	--	--	--	--
3/21/1997	--		248.35	5.0	24.5	8.21	--	240.14	<50	<0.5	<0.5	<0.5	<0.5	<3	--	--
5/27/1997	--		248.35	5.0	24.5	8.25	--	240.10	--	--	--	--	--	--	--	--
8/5/1997	--		248.35	5.0	24.5	8.29	--	240.06	--	--	--	--	--	--	--	--
10/29/1997	--		248.35	5.0	24.5	8.58	--	239.77	<50	<0.5	<0.5	<0.5	<0.5	<3	--	--
2/25/1998	--		248.35	5.0	24.5	7.69	--	240.66	<50	<0.5	<0.5	<0.5	<0.5	<3	--	--
5/12/1998	--		248.35	5.0	24.5	8.20	--	240.15	--	--	--	--	--	--	--	--
7/28/1998	--		248.35	5.0	24.5	8.55	--	239.80	--	--	--	--	--	--	--	--

Table 1. Summary of Ground-Water Monitoring Data: Relative Water Elevations and Laboratory Analyses

Station #6002, 6235 Seminary Ave., Oakland, CA

Well and Sample Date	P/NP	Comments	TOC (feet msl)	Top of Screen (ft bgs)	Bottom of Screen (ft bgs)	DTW (feet bgs)	Product Thickness (feet)	Water Level Elevation (feet msl)	Concentrations in (µg/L)						DO (mg/L)	pH
									GRO/TPHg	Benzene	Toluene	Ethyl-Benzene	Total Xylenes	MtBE		
MW-3 Cont.																
10/27/1998	--		248.35	5.0	24.5	8.30	--	240.05	--	--	--	--	--	--	--	--
2/8/1999	--		248.35	5.0	24.5	7.90	--	240.45	<50	<0.5	<0.5	<0.5	<0.5	<3	--	--
6/1/1999	--		248.35	5.0	24.5	8.40	--	239.95	--	--	--	--	--	--	--	--
8/25/1999	--		248.35	5.0	24.5	8.49	--	239.86	--	--	--	--	--	--	1.67	--
10/29/1999	--		248.35	5.0	24.5	8.52	--	239.83	--	--	--	--	--	--	6.9	--
2/16/2000	NP		248.35	5.0	24.5	8.03	--	240.32	<50	<0.5	0.8	<0.5	<1	<3	8.51	--
6/23/2000	--		248.35	5.0	24.5	7.55	--	240.80	--	--	--	--	--	--	2.1	--
8/17/2000	--		248.35	5.0	24.5	8.65	--	239.70	--	--	--	--	--	--	1.1	--
11/10/2000	--		248.35	5.0	24.5	7.19	--	241.16	--	--	--	--	--	--	--	--
2/12/2001	NP		248.35	5.0	24.5	8.60	--	239.75	<50	<0.50	<0.50	<0.50	<0.50	<2.5	0.81	--
4/13/2001	--		248.35	5.0	24.5	6.13	--	242.22	--	--	--	--	--	--	--	--
7/18/2001	--		248.35	5.0	24.5	6.47	--	241.88	--	--	--	--	--	--	--	--
10/1/2001	--		248.35	5.0	24.5	6.99	--	241.36	--	--	--	--	--	--	--	--
1/14/2002	NP		248.35	5.0	24.5	5.47	--	242.88	<50	<0.50	<0.50	<0.50	<0.50	<5.0	--	--
4/3/2002	--		248.35	5.0	24.5	6.95	--	241.40	--	--	--	--	--	--	--	--
8/8/2002	--		248.35	5.0	24.5	8.78	--	239.57	--	--	--	--	--	--	--	--
11/27/2002	--		248.35	5.0	24.5	8.52	--	239.83	--	--	--	--	--	--	--	--
2/10/2003	NP		248.35	5.0	24.5	8.40	--	239.95	<50	<0.50	<0.50	<0.50	<0.50	<0.50	0.7	6.4
6/3/2003	--		248.35	5.0	24.5	8.40	--	239.95	--	--	--	--	--	--	--	--
8/14/2003	--		248.35	5.0	24.5	8.60	--	239.75	--	--	--	--	--	--	--	--
11/13/2003	--		248.35	5.0	24.5	8.41	--	239.94	--	--	--	--	--	--	--	--
02/13/2004	--		253.88	5.0	24.5	8.40	--	245.48	--	--	--	--	--	--	--	--
05/05/2004	--		253.88	5.0	24.5	8.28	--	245.60	--	--	--	--	--	--	--	--
08/30/2004	NP		253.88	5.0	24.5	10.32	--	243.56	<50	<0.50	<0.50	<0.50	<0.50	0.72	1.4	6.4
11/08/2004	--		253.88	5.0	24.5	8.12	--	245.76	--	--	--	--	--	--	--	--
02/07/2005	--		253.88	5.0	24.5	8.20	--	245.68	--	--	--	--	--	--	--	--
05/09/2005	--		253.88	5.0	24.5	8.23	--	245.65	--	--	--	--	--	--	--	--
08/11/2005	NP		253.88	5.0	24.5	8.72	--	245.16	<50	<0.50	<0.50	<0.50	<0.50	0.73	1.6	6.1
12/02/2005	--		253.88	5.0	24.5	8.15	--	245.73	--	--	--	--	--	--	--	--
02/15/2006	--		253.88	5.0	24.5	8.23	--	245.65	--	--	--	--	--	--	--	--
5/19/2006	--		253.88	5.0	24.5	8.38	--	245.50	--	--	--	--	--	--	--	--

Table 1. Summary of Ground-Water Monitoring Data: Relative Water Elevations and Laboratory Analyses

Station #6002, 6235 Seminary Ave., Oakland, CA

Well and Sample Date	P/NP	Comments	TOC (feet msl)	Top of Screen (ft bgs)	Bottom of Screen (ft bgs)	DTW (feet bgs)	Product Thickness (feet)	Water Level Elevation (feet msl)	Concentrations in (µg/L)						DO (mg/L)	pH
									GRO/TPHg	Benzene	Toluene	Ethyl-Benzene	Total Xylenes	MtBE		
MW-3 Cont.																
8/25/2006	P		253.88	5.0	24.5	8.59	--	245.29	<50	<0.50	<0.50	<0.50	<0.50	<0.50	1.15	6.2
11/2/2006	--		253.88	5.0	24.5	8.65	--	245.23	--	--	--	--	--	--	--	--
2/6/2007	--		253.88	5.0	24.5	8.38	--	245.50	--	--	--	--	--	--	--	--
5/9/2007	--		253.88	5.0	24.5	8.42	--	245.46	--	--	--	--	--	--	--	--
8/8/2007	NP		253.88	5.0	24.5	8.67	--	245.21	<50	<0.50	<0.50	<0.50	<0.50	<0.50	1.16	6.90
MW-4																
3/15/1995	--		242.91	4.5	24.5	9.37	--	233.54	<50	<0.5	<0.5	<0.5	<0.5	--	--	--
5/30/1995	--		242.91	4.5	24.5	11.47	--	231.44	<50	<0.5	<0.5	<0.5	<0.5	--	--	--
9/1/1995	--		242.91	4.5	24.5	12.28	--	230.63	78	<0.5	0.7	<0.5	<0.5	<3	--	--
11/13/1995	--		242.91	4.5	24.5	11.75	--	231.16	<50	<0.5	<0.5	<0.5	<0.5	--	--	--
2/23/1996	--		242.91	4.5	24.5	8.51	--	234.40	59	1.2	7.4	1.6	9.3	3	--	--
5/10/1996	--		242.91	4.5	24.5	11.35	--	231.56	<50	<0.5	<0.5	<0.5	<0.5	<3	--	--
8/9/1996	--		242.91	4.5	24.5	9.70	--	233.21	<50	<0.5	<0.5	<0.5	<0.5	<3	--	--
11/8/1996	--		242.91	4.5	24.5	11.79	--	231.12	<50	<0.5	<0.5	<0.5	<0.5	<3	--	--
3/21/1997	--		242.91	4.5	24.5	10.94	--	231.97	<50	<0.5	<0.5	<0.5	<0.5	81	--	--
5/27/1997	--		242.91	4.5	24.5	11.51	--	231.40	<50	<0.5	<0.5	<0.5	<0.5	<3	--	--
8/5/1997	--		242.91	4.5	24.5	11.90	--	231.01	<50	<0.5	<0.5	<0.5	<0.5	<3	--	--
10/29/1997	--		242.91	4.5	24.5	12.00	--	230.91	<50	<0.5	<0.5	<0.5	<0.5	<3	--	--
2/25/1998	--		242.91	4.5	24.5	8.34	--	234.57	<50	<0.5	0.9	<0.5	0.9	4	--	--
5/12/1998	--		242.91	4.5	24.5	10.93	--	231.98	<50	<0.5	<0.5	<0.5	<0.5	<3	--	--
7/28/1998	--		242.91	4.5	24.5	12.08	--	230.83	<50	<0.5	<0.5	<0.5	<0.5	<3	--	--
10/27/1998	--		242.91	4.5	24.5	11.40	--	231.51	<5,000	<50	<50	160	64	6,400	--	--
2/8/1999	--		242.91	4.5	24.5	8.40	--	234.51	<50	<0.5	<0.5	<0.5	<0.5	<3	--	--
6/1/1999	NP		242.91	4.5	24.5	11.93	--	230.98	<50	<0.5	<0.5	<0.5	<0.5	<3	4	6.26
8/25/1999	NP		242.91	4.5	24.5	12.21	--	230.70	<50	<0.5	<0.5	<0.5	<0.5	<3	1.29	6.34
10/29/1999	NP		242.91	4.5	24.5	12.37	--	230.54	<50	<0.5	<0.5	<0.5	<1	<3	1.5	5.60
2/16/2000	NP		242.91	4.5	24.5	7.45	--	235.46	<50	<0.5	<0.5	<0.5	<1	<3	2.38	--
6/23/2000	NP		242.91	4.5	24.5	12.31	--	230.60	<50	<0.50	<0.50	<0.50	<0.50	<2.50	2.8	--
8/17/2000	--	f	242.91	4.5	24.5	--	--	--	<50	<0.50	<0.50	<0.50	<0.50	<2.50	--	--
8/17/2000	NP		242.91	4.5	24.5	11.92	--	230.99	<50	<0.50	<0.50	<0.50	<0.50	<2.50	2.38	--

Table 1. Summary of Ground-Water Monitoring Data: Relative Water Elevations and Laboratory Analyses

Station #6002, 6235 Seminary Ave., Oakland, CA

Well and Sample Date	P/NP	Comments	TOC (feet msl)	Top of Screen (ft bgs)	Bottom of Screen (ft bgs)	DTW (feet bgs)	Product Thickness (feet)	Water Level Elevation (feet msl)	Concentrations in (µg/L)						DO (mg/L)	pH
									GRO/TPHg	Benzene	Toluene	Ethyl-Benzene	Total Xylenes	MtBE		
MW-4 Cont.																
11/10/2000	NP		242.91	4.5	24.5	10.80	--	232.11	<50	<0.50	<0.50	<0.50	<0.50	<2.50	1.55	--
2/12/2001	NP		242.91	4.5	24.5	11.65	--	231.26	<50	<0.50	<0.50	<0.50	<0.50	<2.50	1.12	--
4/13/2001	--	f	242.91	4.5	24.5	--	--	--	<50	<0.50	<0.50	<0.50	<0.50	<2.50	--	--
4/13/2001	NP		242.91	4.5	24.5	8.17	--	234.74	<50	<0.50	<0.50	<0.50	<0.50	<2.50	--	--
7/18/2001	NP		242.91	4.5	24.5	8.51	--	234.40	<50	<0.50	<0.50	<0.50	<0.50	<2.5	--	--
10/1/2001	NP		242.91	4.5	24.5	8.71	--	234.20	<50	<0.50	<0.50	<0.50	<0.50	<2.5	--	--
1/14/2002	NP		242.91	4.5	24.5	7.13	--	235.78	<50	<0.50	<0.50	<0.50	<0.50	<5.0	--	--
1/14/2002	--	f	242.91	4.5	24.5	--	--	--	<50	<0.50	<0.50	<0.50	<0.50	<5.0	--	--
4/3/2002	NP		242.91	4.5	24.5	10.10	--	232.81	<50	<0.50	<0.50	<0.50	<0.50	<2.5	--	--
8/8/2002	NP		242.91	4.5	24.5	12.64	--	230.27	<50	<0.50	<0.50	<0.50	<0.50	<2.5	2.4	8.1
11/27/2002	NP		242.91	4.5	24.5	12.01	--	230.90	<50	<0.50	<0.50	<0.50	<0.50	4.7	2.5	6.5
2/10/2003	NP		242.91	4.5	24.5	11.22	--	231.69	<50	<0.50	<0.50	<0.50	<0.50	<0.50	0.8	6.6
6/3/2003	--		242.91	4.5	24.5	11.54	--	231.37	<50	<0.50	<0.50	<0.50	<0.50	<0.50	3.9	6
8/14/2003	--		242.91	4.5	24.5	12.41	--	230.50	<50	<0.50	<0.50	<0.50	<0.50	<0.50	1.8	6.3
11/13/2003	--		242.91	4.5	24.5	11.64	--	231.27	--	--	--	--	--	--	--	--
02/13/2004	--		248.62	4.5	24.5	10.28	--	238.34	--	--	--	--	--	--	--	--
05/05/2004	--		248.62	4.5	24.5	12.04	--	236.58	--	--	--	--	--	--	--	--
08/30/2004	NP		248.62	4.5	24.5	12.98	--	235.64	<50	<0.50	<0.50	<0.50	<0.50	<0.50	1.6	5.8
11/08/2004	--		248.62	4.5	24.5	11.29	--	237.33	--	--	--	--	--	--	--	--
02/07/2005	--		248.62	4.5	24.5	10.03	--	238.59	--	--	--	--	--	--	--	--
05/09/2005	--		248.62	4.5	24.5	10.65	--	237.97	--	--	--	--	--	--	--	--
08/11/2005	NP		248.62	4.5	24.5	12.68	--	235.94	<50	<0.50	<0.50	<0.50	<0.50	<0.50	1.9	6.5
12/02/2005	--		248.62	4.5	24.5	10.35	--	238.27	--	--	--	--	--	--	--	--
02/15/2006	--		248.62	4.5	24.5	8.38	--	240.24	--	--	--	--	--	--	--	--
5/19/2006	--		248.62	4.5	24.5	11.24	--	237.38	--	--	--	--	--	--	--	--
8/25/2006	P		248.62	4.5	24.5	12.28	--	236.34	<50	<0.50	<0.50	<0.50	<0.50	<0.50	2.51	5.7
11/2/2006	--		248.62	4.5	24.5	12.64	--	235.98	--	--	--	--	--	--	--	--
2/6/2007	--		248.62	4.5	24.5	10.52	--	238.10	--	--	--	--	--	--	--	--
5/9/2007	--		248.62	4.5	24.5	10.97	--	237.65	--	--	--	--	--	--	--	--
8/8/2007	NP		248.62	4.5	24.5	12.95	--	235.67	<50	<0.50	<0.50	<0.50	<0.50	<0.50	1.70	7.11

Table 1. Summary of Ground-Water Monitoring Data: Relative Water Elevations and Laboratory Analyses

Station #6002, 6235 Seminary Ave., Oakland, CA

Well and Sample Date	P/NP	Comments	TOC (feet msl)	Top of Screen (ft bgs)	Bottom of Screen (ft bgs)	DTW (feet bgs)	Product Thickness (feet)	Water Level Elevation (feet msl)	Concentrations in (µg/L)						DO (mg/L)	pH
									GRO/TPHg	Benzene	Toluene	Ethyl-Benzene	Total Xylenes	MtBE		
MW-5																
3/15/1995	--		244.82	5.0	24.5	11.99	--	232.83	21,000	870	22	1,600	1,900	--	--	--
5/30/1995	--		244.82	5.0	24.5	12.97	--	231.85	17,000	2,100	250	1,000	520	--	--	--
9/1/1995	--		244.82	5.0	24.5	14.03	--	230.79	19,000	1,500	25	1,600	880	8,300	--	--
11/13/1995	--		244.82	5.0	24.5	13.65	--	231.17	21,000	1,300	22	1,400	630	--	--	--
2/23/1996	--		244.82	5.0	24.5	11.93	--	232.89	27,000	1,300	<50	1,600	1,500	730	--	--
5/10/1996	--		244.82	5.0	24.5	13.05	--	231.77	17,000	460	21	760	480	1,000	--	--
8/9/1996	--		244.82	5.0	24.5	13.22	--	231.60	16,000	420	14	870	390	1,500	--	--
11/8/1996	--	e	244.82	5.0	24.5	--	--	--	--	--	--	--	--	--	--	--
3/21/1997	--		244.82	5.0	24.5	13.24	--	231.58	18,000	110	<50	730	1,500	1,800	--	--
5/27/1997	--		244.82	5.0	24.5	13.10	--	231.72	21,000	86	<20	810	610	1,700	--	--
8/5/1997	--		244.82	5.0	24.5	13.14	--	231.68	340	2.2	<0.5	15	8.8	39	--	--
10/29/1997	--		244.82	5.0	24.5	13.03	--	231.79	19,000	130	<20	1,400	620	1,700	--	--
2/25/1998	--		244.82	5.0	24.5	11.33	--	233.49	8,500	19	13	190	100	170	--	--
5/12/1998	--		244.82	5.0	24.5	12.81	--	232.01	10,000	34	<10	390	220	610	--	--
7/28/1998	--		244.82	5.0	24.5	13.12	--	231.70	15,000	68	<10	690	620	1,000	--	--
10/27/1998	--		244.82	5.0	24.5	12.90	--	231.92	15,000	60	<10	770	400	890	--	--
2/8/1999	--		244.82	5.0	24.5	11.08	--	233.74	8,200	23	<10	290	120	<60	--	--
6/1/1999	NP		244.82	5.0	24.5	12.95	--	231.87	11,000	33	3.3	340	180	580	1	6.49
8/25/1999	NP		244.82	5.0	24.5	12.99	--	231.83	9,200	26	14	420	270	1,100	0.37	7.78
10/29/1999	NP		244.82	5.0	24.5	13.10	--	231.72	11,000	19	9.8	260	150	590	1.27	6.2
2/16/2000	NP		244.82	5.0	24.5	8.21	--	236.61	12,000	8.1	10	340	160	130	1.42	--
6/23/2000	NP		244.82	5.0	24.5	12.90	--	231.92	9,680	38	<20.0	212	114	930	1.4	--
8/17/2000	NP		244.82	5.0	24.5	13.00	--	231.82	10,500	15	7.98	223	118	430	0.68	--
11/10/2000	NP		244.82	5.0	24.5	12.50	--	232.32	7,030	19.7	<10.0	190	43.6	445	1.27	--
2/12/2001	NP		244.82	5.0	24.5	12.81	--	232.01	8,840	33.9	<10.0	186	56.4	352	0.4	--
4/13/2001	NP		244.82	5.0	24.5	11.31	--	233.51	9,020	54.2	43.3	137	96	297	--	--
7/18/2001	NP		244.82	5.0	24.5	11.59	--	233.23	13,000	19	10	110	49	230	--	--
10/1/2001	NP		244.82	5.0	24.5	11.84	--	232.98	8,500	6.9	<1.0	87	27	220	--	--
1/14/2002	NP		244.82	5.0	24.5	10.75	--	234.07	9,500	<20	<20	140	22	<200	--	--
4/3/2002	NP	f	244.82	5.0	24.5	--	--	--	2,700	24	5.1	92	8.5	130	--	--
4/3/2002	NP		244.82	5.0	24.5	12.50	--	232.32	2,400	21	<5.0	91	8.5	130	--	--

Table 1. Summary of Ground-Water Monitoring Data: Relative Water Elevations and Laboratory Analyses

Station #6002, 6235 Seminary Ave., Oakland, CA

Well and Sample Date	P/NP	Comments	TOC (feet msl)	Top of Screen (ft bgs)	Bottom of Screen (ft bgs)	DTW (feet bgs)	Product Thickness (feet)	Water Level Elevation (feet msl)	Concentrations in (µg/L)						DO (mg/L)	pH
									GRO/TPHg	Benzene	Toluene	Ethyl-Benzene	Total Xylenes	MtBE		
MW-5 Cont.																
8/8/2002	NP		244.82	5.0	24.5	12.83	--	231.99	2,000	<20	<20	48	<20	520	0.8	6.9
11/27/2002	NP		244.82	5.0	24.5	12.79	--	232.03	2,200	<10	<10	33	<10	150	0.8	6.4
2/10/2003	NP		244.82	5.0	24.5	12.62	--	232.20	2,600	<2.5	<2.5	47	4.2	100	0.7	6.6
6/3/2003	--		244.82	5.0	24.5	12.41	--	232.41	2,400	<5.0	<5.0	26	<5.0	160	1.8	6.3
8/14/2003	--	e	244.82	5.0	24.5	--	--	--	--	--	--	--	--	--	--	--
11/13/2003	NP		244.82	5.0	24.5	12.49	--	232.33	1,900	<5.0	<5.0	13	<5.0	90	0.9	6.4
02/13/2004	NP		250.55	5.0	24.5	12.38	--	238.17	1,400	1.4	1.9	23	3.6	90	1.1	62.8
05/05/2004	NP		250.55	5.0	24.5	12.68	--	237.87	5,800	<2.5	<2.5	13	<2.5	130	1.1	6.3
08/30/2004	P		250.55	5.0	24.5	12.96	--	237.59	4,100	<2.5	<2.5	<2.5	<2.5	85	--	6.4
11/08/2004	NP		250.55	5.0	24.5	12.10	--	238.45	3,300	14	1.9	17	6.1	69	1.05	6.0
02/07/2005	NP		250.55	5.0	24.5	12.02	--	238.53	3,500	<1.0	1.1	16	2.6	15	0.95	6.5
05/09/2005	NP	j	250.55	5.0	24.5	11.94	--	238.61	3,400	<1.0	1.7	12	2.2	19	2.2	6.7
08/11/2005	NP		250.55	5.0	24.5	12.77	--	237.78	5,700	<2.5	<2.5	13	<2.5	51	0.7	6.0
12/02/2005	NP		250.55	5.0	24.5	11.83	--	238.72	3,900	<2.5	<2.5	15	8.3	13	1.41	6.9
02/15/2006	NP		250.55	5.0	24.5	10.77	--	239.78	790	<0.50	<0.50	1.2	<0.50	<0.50	1.2	6.9
5/19/2006	NP		250.55	5.0	24.5	12.29	--	238.26	4,100	0.97	1.3	3.9	1.8	15	0.98	6.5
8/25/2006	P		250.55	5.0	24.5	12.62	--	237.93	3,700	<2.5	<2.5	4.0	<2.5	17	1.15	6.2
11/2/2006	P		250.55	5.0	24.5	12.90	--	237.65	5,700	<1.0	1.5	4.3	1.7	18	1.86	6.67
2/6/2007	NP		250.55	5.0	24.5	12.37	--	238.18	4,800	<1.0	<1.0	5.2	1.3	13	0.96	6.99
5/9/2007	NP		250.55	5.0	24.5	12.50	--	238.05	4,400	<1.0	<1.0	4.9	1.5	31	1.42	6.89
8/8/2007	NP		250.55	5.0	24.5	12.88	--	237.67	4,100	<1.0	<1.0	4.1	1.3	11	1.16	6.44
MW-6																
6/29/1995	--		--	17.0	31.5	6.63	--	--	<50	<0.5	<0.5	<0.5	<0.5	--	--	--
9/1/1995	--		--	17.0	31.5	--	--	--	--	--	--	--	--	--	--	--
11/13/1995	--		--	17.0	31.5	7.70	--	--	<50	<0.5	<0.5	<0.5	<0.5	<3	--	--
2/23/1996	--		--	17.0	31.5	9.82	--	--	<50	<0.5	0.8	<0.5	0.6	<3	--	--
5/10/1996	--		--	17.0	31.5	15.25	--	--	--	--	--	--	--	--	--	--
8/9/1996	--		252.20	17.0	31.5	11.11	--	241.09	--	--	--	--	--	--	--	--
11/8/1996	--		252.20	17.0	31.5	9.31	--	242.89	--	--	--	--	--	--	--	--
3/21/1997	--		252.20	17.0	31.5	9.40	--	242.80	<50	<0.5	<0.5	<0.5	<0.5	<3	--	--

Table 1. Summary of Ground-Water Monitoring Data: Relative Water Elevations and Laboratory Analyses

Station #6002, 6235 Seminary Ave., Oakland, CA

Well and Sample Date	P/NP	Comments	TOC (feet msl)	Top of Screen (ft bgs)	Bottom of Screen (ft bgs)	DTW (feet bgs)	Product Thickness (feet)	Water Level Elevation (feet msl)	Concentrations in (µg/L)						DO (mg/L)	pH
									GRO/TPHg	Benzene	Toluene	Ethyl-Benzene	Total Xylenes	MtBE		
MW-6 Cont.																
5/27/1997	--		252.20	17.0	31.5	7.08	--	245.12	--	--	--	--	--	--	--	--
8/5/1997	--		252.20	17.0	31.5	7.12	--	245.08	--	--	--	--	--	--	--	--
10/29/1997	--		252.20	17.0	31.5	7.42	--	244.78	<50	<0.5	<0.5	<0.5	<0.5	<3	--	--
2/25/1998	--		252.20	17.0	31.5	10.35	--	241.85	<50	<0.5	<0.5	<0.5	<0.5	<3	--	--
5/12/1998	--		252.20	17.0	31.5	15.83	--	236.37	--	--	--	--	--	--	--	--
7/28/1998	--		252.20	17.0	31.5	11.84	--	240.36	--	--	--	--	--	--	--	--
10/27/1998	--		252.20	17.0	31.5	9.73	--	242.47	--	--	--	--	--	--	--	--
2/8/1999	--		252.20	17.0	31.5	8.10	--	244.10	<50	<0.5	<0.5	<0.5	<0.5	<3	--	--
6/1/1999	--		252.20	17.0	31.5	17.84	--	234.36	--	--	--	--	--	--	--	--
8/25/1999	--		252.20	17.0	31.5	11.00	--	241.20	--	--	--	--	--	--	0.77	--
10/29/1999	--		252.20	17.0	31.5	9.03	--	243.17	--	--	--	--	--	--	3.42	--
2/16/2000	P		252.20	17.0	31.5	7.71	--	244.49	<50	<0.5	<0.5	<0.5	<1	<3	2.42	--
6/23/2000	--		252.20	17.0	31.5	6.69	--	245.51	--	--	--	--	--	--	2.3	--
8/17/2000	--		252.20	17.0	31.5	6.95	--	245.25	--	--	--	--	--	--	2.51	--
11/10/2000	--		252.20	17.0	31.5	11.79	--	240.41	--	--	--	--	--	--	--	--
2/12/2001	--	f	--	17.0	31.5	--	--	--	--	--	--	--	--	--	--	--
2/12/2001	P		252.20	17.0	31.5	7.35	--	244.85	<50	<0.50	<0.50	<0.50	<0.50	<2.5	1.66	7.77
4/13/2001	--		252.20	17.0	31.5	10.52	--	241.68	--	--	--	--	--	--	--	--
7/18/2001	--		252.20	17.0	31.5	11.03	--	241.17	--	--	--	--	--	--	--	--
10/1/2001	--		252.20	17.0	31.5	11.31	--	240.89	--	--	--	--	--	--	--	--
1/14/2002	P		252.20	17.0	31.5	9.87	--	242.33	<50	<0.50	<0.50	<0.50	<0.50	<5.0	--	--
4/3/2002	--		252.20	17.0	31.5	12.19	--	240.01	--	--	--	--	--	--	--	--
8/8/2002	--		252.20	17.0	31.5	7.04	--	245.16	--	--	--	--	--	--	--	--
11/27/2002	--		252.20	17.0	31.5	6.85	--	245.35	--	--	--	--	--	--	--	--
2/10/2003	NP		252.20	17.0	31.5	6.74	--	245.46	<50	<0.50	<0.50	<0.50	<0.50	<0.50	1.1	7.4
6/3/2003	--		252.20	17.0	31.5	14.35	--	237.85	--	--	--	--	--	--	--	--
8/14/2003	--		252.20	17.0	31.5	10.74	--	241.46	--	--	--	--	--	--	--	--
11/13/2003	--		252.20	17.0	31.5	10.68	--	241.52	--	--	--	--	--	--	--	--
02/13/2004	--		257.94	17.0	31.5	7.38	--	250.56	--	--	--	--	--	--	--	--
05/05/2004	--		257.94	17.0	31.5	7.43	--	250.51	--	--	--	--	--	--	--	--
08/30/2004	P		257.94	17.0	31.5	7.39	--	250.55	<50	<0.50	<0.50	<0.50	<0.50	<0.50	2.5	7.0

Table 1. Summary of Ground-Water Monitoring Data: Relative Water Elevations and Laboratory Analyses

Station #6002, 6235 Seminary Ave., Oakland, CA

Well and Sample Date	P/NP	Comments	TOC (feet msl)	Top of Screen (ft bgs)	Bottom of Screen (ft bgs)	DTW (feet bgs)	Product Thickness (feet)	Water Level Elevation (feet msl)	Concentrations in (µg/L)						DO (mg/L)	pH
									GRO/TPHg	Benzene	Toluene	Ethyl-Benzene	Total Xylenes	MtBE		
MW-6 Cont.																
11/08/2004	--		257.94	17.0	31.5	15.57	--	242.37	--	--	--	--	--	--	--	--
02/07/2005	--		257.94	17.0	31.5	15.26	--	242.68	--	--	--	--	--	--	--	--
05/09/2005	--		257.94	17.0	31.5	11.31	--	246.63	--	--	--	--	--	--	--	--
08/11/2005	P		257.94	17.0	31.5	9.80	--	248.14	<50	<0.50	<0.50	<0.50	<0.50	<0.50	2.4	7.1
12/02/2005	--		257.94	17.0	31.5	14.55	--	243.39	--	--	--	--	--	--	--	--
02/15/2006	--		257.94	17.0	31.5	10.33	--	247.61	--	--	--	--	--	--	--	--
5/19/2006	--		257.94	17.0	31.5	6.50	--	251.44	--	--	--	--	--	--	--	--
8/25/2006	P		257.94	17.0	31.5	6.75	--	251.19	<50	<0.50	<0.50	<0.50	<0.50	<0.50	1.90	6.6
11/2/2006	--		257.94	17.0	31.5	7.15	--	250.79	--	--	--	--	--	--	--	--
2/6/2007	--		257.94	17.0	31.5	6.93	--	251.01	--	--	--	--	--	--	--	--
5/9/2007	--		257.94	17.0	31.5	7.03	--	250.91	--	--	--	--	--	--	--	--
8/8/2007	P		257.94	17.0	31.5	7.01	--	250.93	<50	<0.50	<0.50	<0.50	<0.50	<0.50	2.64	7.12
MW-7																
8/9/1996	--	g	235.95	8.5	13.5	--	--	--	--	--	--	--	--	--	--	--
11/8/1996	--	g	235.95	8.5	13.5	--	--	--	--	--	--	--	--	--	--	--
1/27/1997	--		235.95	8.5	13.5	--	--	--	2,900	29	<5	<5	580	220	--	--
3/21/1997	--		235.95	8.5	13.5	7.13	--	228.82	590	3.5	<0.5	<0.5	1.3	90	--	--
5/27/1997	--		235.95	8.5	13.5	9.02	--	226.93	<50	<0.5	<0.5	<0.5	<0.5	<3	--	--
8/5/1997	--		235.95	8.5	13.5	12.33	--	223.62	110	0.5	<0.5	<0.5	0.8	81	--	--
10/29/1997	--	g	235.95	8.5	13.5	--	--	--	--	--	--	--	--	--	--	--
2/25/1998	--		235.95	8.5	13.5	8.04	--	227.91	<50	<0.5	0.6	<0.5	0.7	<3	--	--
5/12/1998	--		235.95	8.5	13.5	8.88	--	227.07	<50	<0.5	<0.5	<0.5	<0.5	<3	--	--
7/28/1998	--		235.95	8.5	13.5	10.50	--	225.45	<50	<0.5	<0.5	<0.5	<0.5	<3	--	--
10/27/1998	--		235.95	8.5	13.5	8.75	--	227.20	<50	<0.5	<0.5	<0.5	<0.5	<3	--	--
2/8/1999	--		235.95	8.5	13.5	9.35	--	226.60	<50	<0.5	<0.5	<0.5	<0.5	<3	--	--
6/1/1999	NP		235.95	8.5	13.5	9.85	--	226.10	250	<0.5	0.6	<0.5	1.6	18	1	6.43
8/25/1999	NP		235.95	8.5	13.5	11.31	--	224.64	119	<0.5	5.7	<0.5	<0.5	11	0.41	8.28
10/29/1999	NP		235.95	8.5	13.5	9.08	--	226.87	<50	<0.5	<0.5	<0.5	<1	<3	1.29	5.82
2/25/2000	NP		235.95	8.5	13.5	8.02	--	227.93	<50	<0.5	<0.5	<0.5	<1	38	2.1	--
6/23/2000	NP		235.95	8.5	13.5	10.68	--	225.27	<50	<0.50	<0.50	<0.50	<0.50	14.4	1.6	--

Table 1. Summary of Ground-Water Monitoring Data: Relative Water Elevations and Laboratory Analyses

Station #6002, 6235 Seminary Ave., Oakland, CA

Well and Sample Date	P/NP	Comments	TOC (feet msl)	Top of Screen (ft bgs)	Bottom of Screen (ft bgs)	DTW (feet bgs)	Product Thickness (feet)	Water Level Elevation (feet msl)	Concentrations in (µg/L)						DO (mg/L)	pH
									GRO/TPHg	Benzene	Toluene	Ethyl-Benzene	Total Xylenes	MtBE		
MW-7 Cont.																
8/17/2000	NP		235.95	8.5	13.5	11.85	--	224.10	70	<0.500	0.678	<0.500	1.07	14.2	1.59	--
11/10/2000	NP		235.95	8.5	13.5	9.62	--	226.33	<50	<0.50	<0.50	<0.50	<0.50	<2.5	1.09	--
2/12/2001	NP		235.95	8.5	13.5	12.10	--	223.85	<50	<0.50	<0.50	<0.50	<0.50	<2.5	0.84	--
4/13/2001	P		235.95	8.5	13.5	7.95	--	228.00	<50	<0.50	<0.50	<0.50	<0.50	<2.5	--	--
7/18/2001	P		235.95	8.5	13.5	8.20	--	227.75	<50	<0.50	<0.50	<0.50	<0.50	<2.5	--	--
10/1/2001	NP		235.95	8.5	13.5	8.59	--	227.36	<50	<0.50	<0.50	<0.50	<0.50	<2.5	--	--
1/14/2002	P		235.95	8.5	13.5	6.93	--	229.02	<50	<0.50	<0.50	<0.50	<0.50	<5.0	--	--
4/3/2002	P		235.95	8.5	13.5	8.31	--	227.64	<50	<0.50	<0.50	<0.50	<0.50	<2.5	--	--
8/8/2002	P	h	235.95	8.5	13.5	12.11	--	223.84	--	--	--	--	--	--	--	--
11/27/2002	NP	h	235.95	8.5	13.5	13.01	--	222.94	--	--	--	--	--	--	--	--
2/10/2003	NP		235.95	8.5	13.5	10.02	--	225.93	<50	<0.50	<0.50	<0.50	<0.50	<0.50	1.5	6.7
6/3/2003	NP		235.95	8.5	13.5	6.82	--	229.13	<50	<0.50	<0.50	<0.50	<0.50	<0.50	8.1	6.8
8/14/2003	P		235.95	8.5	13.5	8.16	--	227.79	<50	<0.50	<0.50	<0.50	<0.50	<0.50	2.8	6.7
11/13/2003	--		235.95	8.5	13.5	8.07	--	227.88	--	--	--	--	--	--	--	--
02/13/2004	--		241.64	8.5	13.5	7.62	--	234.02	--	--	--	--	--	--	--	--
05/05/2004	--		241.64	8.5	13.5	11.01	--	230.63	--	--	--	--	--	--	--	--
08/30/2004	--	h	241.64	8.5	13.5	13.27	--	228.37	--	--	--	--	--	--	--	--
11/08/2004	--		241.64	8.5	13.5	13.22	--	228.42	--	--	--	--	--	--	--	--
02/07/2005	--		241.64	8.5	13.5	13.07	--	228.57	--	--	--	--	--	--	--	--
05/09/2005	--		241.64	8.5	13.5	7.57	--	234.07	--	--	--	--	--	--	--	--
08/11/2005	NP		241.64	8.5	13.5	11.55	--	230.09	<50	<0.50	<0.50	<0.50	<0.50	<0.50	1.1	6.7
12/02/2005	--		241.64	8.5	13.5	13.12	--	228.52	--	--	--	--	--	--	--	--
02/15/2006	--		241.64	8.5	13.5	7.27	--	234.37	--	--	--	--	--	--	--	--
5/19/2006	--		241.64	8.5	13.5	7.84	--	233.80	--	--	--	--	--	--	--	--
8/25/2006	P		241.64	8.5	13.5	12.19	--	229.45	<50	<0.50	<0.50	<0.50	<0.50	<0.50	3.33	6.2
11/2/2006	--		241.64	8.5	13.5	13.15	--	228.49	--	--	--	--	--	--	--	--
2/6/2007	--		241.64	8.5	13.5	11.12	--	230.52	--	--	--	--	--	--	--	--
5/9/2007	--		241.64	8.5	13.5	11.60	--	230.04	--	--	--	--	--	--	--	--
8/8/2007	--	g	241.64	8.5	13.5	--	--	--	--	--	--	--	--	--	--	--
MW-8																

Table 1. Summary of Ground-Water Monitoring Data: Relative Water Elevations and Laboratory Analyses

Station #6002, 6235 Seminary Ave., Oakland, CA

Well and Sample Date	P/NP	Comments	TOC (feet msl)	Top of Screen (ft bgs)	Bottom of Screen (ft bgs)	DTW (feet bgs)	Product Thickness (feet)	Water Level Elevation (feet msl)	Concentrations in (µg/L)						DO (mg/L)	pH
									GRO/TPHg	Benzene	Toluene	Ethyl-Benzene	Total Xylenes	MtBE		
MW-8 Cont.																
8/9/1996	--		240.37	5.5	14.0	9.41	--	230.96	<50	<0.5	<0.5	<0.5	<0.5	<3	--	--
11/8/1996	--		240.37	5.5	14.0	9.19	--	231.18	<50	<0.5	<0.5	<0.5	<0.5	<3	--	--
3/21/1997	--		240.37	5.5	14.0	8.55	--	231.82	<50	<0.5	<0.5	<0.5	<0.5	<3	--	--
5/27/1997	--		240.37	5.5	14.0	11.06	--	229.31	91	0.6	<0.5	<0.5	0.6	66	--	--
8/5/1997	--		240.37	5.5	14.0	9.32	--	231.05	<50	<0.5	<0.5	<0.5	<0.5	<3	--	--
10/29/1997	--		240.37	5.5	14.0	9.35	--	231.02	<50	<0.5	<0.5	<0.5	<0.5	<3	--	--
2/25/1998	--		240.37	5.5	14.0	7.08	--	233.29	<50	<0.5	<0.5	<0.5	<0.5	<3	--	--
5/12/1998	--		240.37	5.5	14.0	8.61	--	231.76	<50	<0.5	<0.5	<0.5	<0.5	<3	--	--
7/28/1998	--		240.37	5.5	14.0	9.63	--	230.74	<50	<0.5	<0.5	<0.5	<0.5	4	--	--
10/27/1998	--		240.37	5.5	14.0	9.30	--	231.07	<50	<0.5	<0.5	<0.5	<0.5	<3	--	--
2/8/1999	--		240.37	5.5	14.0	5.56	--	234.81	<50	<0.5	<0.5	<0.5	<0.5	<3	--	--
6/1/1999	--	e	240.37	5.5	14.0	--	--	--	--	--	--	--	--	--	--	--
8/25/1999	--	e	240.37	5.5	14.0	--	--	--	--	--	--	--	--	--	--	--
10/29/1999	--	e	240.37	5.5	14.0	--	--	--	--	--	--	--	--	--	--	--
2/16/2000	--	e	240.37	5.5	14.0	--	--	--	--	--	--	--	--	--	--	--
6/23/2000	NP		240.37	5.5	14.0	9.45	--	230.92	<50	<0.50	<0.50	<0.500	<0.50	<2.5	1.9	--
8/17/2000	NP		240.37	5.5	14.0	6.40	--	233.97	<50	<0.50	<0.50	<0.50	<0.50	<2.5	2.56	--
11/10/2000	--	f	240.37	5.5	14.0	--	--	--	<50	<0.50	<0.50	<0.50	<0.50	<2.5	--	--
11/10/2000	NP		240.37	5.5	14.0	6.25	--	234.12	<50	<0.50	<0.50	<0.50	<0.50	<2.5	1.93	--
2/12/2001	NP		240.37	5.5	14.0	8.11	--	232.26	<50	<0.50	<0.50	<0.50	<0.50	<2.5	1.65	--
4/13/2001	P		240.37	5.5	14.0	5.19	--	235.18	<50	<0.50	<0.50	<0.50	<0.50	<2.5	--	--
7/18/2001	NP		240.37	5.5	14.0	5.55	--	234.82	<50	<0.50	<0.50	<0.50	<0.50	<2.5	--	--
10/1/2001	NP		240.37	5.5	14.0	6.41	--	233.96	<50	<0.50	<0.50	<0.50	<0.50	<2.5	--	--
1/14/2002	P		240.37	5.5	14.0	5.07	--	235.30	<50	<0.50	<0.50	<0.50	<0.50	<5.0	--	--
4/3/2002	P		240.37	5.5	14.0	8.60	--	231.77	<50	<0.50	<0.50	<0.50	<0.50	<2.5	--	--
8/8/2002	P		240.37	5.5	14.0	9.58	--	230.79	<50	<0.50	<0.50	<0.50	<0.50	<2.5	1.7	7
11/27/2002	P		240.37	5.5	14.0	9.15	--	231.22	<50	<0.50	<0.50	<0.50	<0.50	<0.50	3.1	6.7
2/10/2003	P		240.37	5.5	14.0	8.55	--	231.82	<50	<0.50	<0.50	<0.50	<0.50	<0.50	1.3	6.6
6/3/2003	--		240.37	5.5	14.0	8.72	--	231.65	<50	<0.50	<0.50	<0.50	<0.50	<0.50	9.1	6.3
8/14/2003	--		240.37	5.5	14.0	9.52	--	230.85	<50	<0.50	<0.50	<0.50	<0.50	<0.50	5.5	6.4
11/13/2003	--		240.37	5.5	14.0	9.45	--	230.92	--	--	--	--	--	--	--	--

Table 1. Summary of Ground-Water Monitoring Data: Relative Water Elevations and Laboratory Analyses

Station #6002, 6235 Seminary Ave., Oakland, CA

Well and Sample Date	P/NP	Comments	TOC (feet msl)	Top of Screen (ft bgs)	Bottom of Screen (ft bgs)	DTW (feet bgs)	Product Thickness (feet)	Water Level Elevation (feet msl)	Concentrations in (µg/L)						DO (mg/L)	pH
									GRO/TPHg	Benzene	Toluene	Ethyl-Benzene	Total Xylenes	MtBE		
MW-8 Cont.																
02/13/2004	--		246.09	5.5	14.0	8.38	--	237.71	--	--	--	--	--	--	--	--
05/05/2004	--		246.09	5.5	14.0	9.30	--	236.79	--	--	--	--	--	--	--	--
08/30/2004	P		246.09	5.5	14.0	9.69	--	236.40	<50	<0.50	<0.50	<0.50	0.75	<0.50	5.1	6.5
11/08/2004	--		246.09	5.5	14.0	8.34	--	237.75	--	--	--	--	--	--	--	--
02/07/2005	--		246.09	5.5	14.0	8.23	--	237.86	--	--	--	--	--	--	--	--
05/09/2005	--		246.09	5.5	14.0	7.07	--	239.02	--	--	--	--	--	--	--	--
08/11/2005	--	e	246.09	5.5	14.0	--	--	--	--	--	--	--	--	--	--	--
12/02/2005	--		246.09	5.5	14.0	8.15	--	237.94	--	--	--	--	--	--	--	--
02/15/2006	--	e	246.09	5.5	14.0	--	--	--	--	--	--	--	--	--	--	--
5/19/2006	--		246.09	5.5	14.0	8.48	--	237.61	--	--	--	--	--	--	--	--
8/25/2006	P		246.09	5.5	14.0	9.45	--	236.64	<50	<0.50	<0.50	<0.50	<0.50	<0.50	2.27	6.0
11/2/2006	--		--	5.5	14.0	--	--	--	--	--	--	--	--	--	--	--
2/6/2007	--		246.09	5.5	14.0	--	--	--	--	--	--	--	--	--	--	--
5/9/2007	--	e	246.09	5.5	14.0	--	--	--	--	--	--	--	--	--	--	--
8/8/2007	--	e	246.09	5.5	14.0	--	--	--	--	--	--	--	--	--	--	--
VW-1																
2/23/1996	--		--	6.0	14.0	5.29	--	--	21,000	490	57	520	1,500	240	--	--
5/10/1996	--		--	6.0	14.0	6.80	--	--	3,700	61	<5	100	50	200	--	--
8/9/1996	--		--	6.0	14.0	7.03	--	--	970	2.7	<2.5	2.7	3.7	180	--	--
11/8/1996	--	e	--	6.0	14.0	--	--	--	--	--	--	--	--	--	--	--
3/21/1997	--		--	6.0	14.0	7.51	--	--	640	<4	<1	1	3	194	--	--
5/27/1997	--		--	6.0	14.0	7.51	--	--	--	--	--	--	--	--	--	--
8/5/1997	--		--	6.0	14.0	7.51	--	--	630	<1	<1	3	2	120	--	--
10/29/1997	--		--	6.0	14.0	7.53	--	--	600	<0.5	<0.5	<0.5	1.6	84	--	--
2/25/1998	--		--	6.0	14.0	6.77	--	--	230	<4	<0.7	1.2	0.5	27	--	--
5/12/1998	--		--	6.0	14.0	7.43	--	--	340	<0.5	0.5	2.3	0.8	29	--	--
7/28/1998	--		--	6.0	14.0	7.00	--	--	240	<0.5	<0.5	<0.5	1.1	54	--	--
10/27/1998	--		--	6.0	14.0	7.52	--	--	230	<0.5	<0.5	<0.5	<0.5	65	--	--
2/8/1999	--	c	--	6.0	14.0	7.05	--	--	<50	<0.5	<0.5	<0.5	<0.5	<3/36	--	--
6/1/1999	NP		--	6.0	14.0	7.55	--	--	180	<0.5	<0.5	<0.5	<0.5	23	1	6.36

Table 1. Summary of Ground-Water Monitoring Data: Relative Water Elevations and Laboratory Analyses

Station #6002, 6235 Seminary Ave., Oakland, CA

Well and Sample Date	P/NP	Comments	TOC (feet msl)	Top of Screen (ft bgs)	Bottom of Screen (ft bgs)	DTW (feet bgs)	Product Thickness (feet)	Water Level Elevation (feet msl)	Concentrations in (µg/L)						DO (mg/L)	pH
									GRO/TPHg	Benzene	Toluene	Ethyl-Benzene	Total Xylenes	MtBE		
VW-1 Cont.																
8/25/1999	NP		--	6.0	14.0	7.66	--	--	130	<0.5	5.6	<0.5	<0.5	40	0.39	7.5
10/29/1999	NP		--	6.0	14.0	7.59	--	--	200	1	<0.5	0.6	1.6	36	0.89	5.65
2/16/2000	NP		--	6.0	14.0	7.03	--	--	210	<0.5	0.9	2.2	1.9	11	1.41	--
6/23/2000	NP		--	6.0	14.0	7.71	--	--	175	1.04	<0.500	<0.500	<0.500	14.4	1.9	--
8/17/2000	NP		--	6.0	14.0	7.75	--	--	180	<0.500	<0.500	0.622	0.76	23.7	0.63	--
11/10/2000	NP		--	6.0	14.0	6.83	--	--	157	0.955	<0.500	0.973	<0.500	32.5	1.03	--
2/12/2001	NP		--	6.0	14.0	7.85	--	--	273	0.627	<0.500	<0.500	0.507	9.19	0.47	--
4/13/2001	P		--	6.0	14.0	5.11	--	--	213	<0.500	<0.500	<0.500	<0.500	6.38	--	--
7/18/2001	P		--	6.0	14.0	5.39	--	--	270	<0.50	<0.50	<0.50	<0.50	20	--	--
10/1/2001	NP		--	6.0	14.0	6.50	--	--	200	<0.50	<0.50	<0.50	0.81	14	--	--
1/14/2002	P		--	6.0	14.0	5.04	--	--	110	<0.50	<0.50	<0.50	<0.50	6.4	--	--
4/3/2002	P		--	6.0	14.0	7.51	--	--	91	0.72	<0.50	<0.50	<0.50	12	--	--
8/8/2002	P		--	6.0	14.0	9.58	--	--	<50	<0.50	<0.50	<0.50	<0.50	33	0.6	6.3
11/27/2002	P		--	6.0	14.0	7.42	--	--	52	0.72	0.78	<0.50	<0.50	21	1	6.1
2/10/2003	NP		--	6.0	14.0	7.38	--	--	52	<0.50	<0.50	<0.50	<0.50	11	1.7	6.5
6/3/2003	--		--	6.0	14.0	7.30	--	--	71	<0.50	<0.50	<0.50	<0.50	13	3.3	6.3
8/14/2003	--		--	6.0	14.0	7.59	--	--	<50	<0.50	<0.50	<0.50	<0.50	18	0.3	6.1
11/13/2003	P		--	6.0	14.0	7.43	--	--	<50	<0.50	<0.50	<0.50	<0.50	13	0.6	6.1
02/13/2004	P		253.19	6.0	14.0	7.35	--	245.84	59	<0.50	<0.50	<0.50	0.56	8.0	1.0	6.0
05/05/2004	P		253.19	6.0	14.0	7.30	--	245.89	<50	0.71	<0.50	<0.50	0.60	11	0.1	6.4
08/30/2004	P		253.19	6.0	14.0	8.50	--	244.69	<50	<0.50	<0.50	<0.50	<0.50	24	0.2	6.2
11/08/2004	P		253.19	6.0	14.0	7.22	--	245.97	230	<0.50	<0.50	<0.50	0.75	27	0.65	5.1
02/07/2005	P		253.19	6.0	14.0	7.25	--	245.94	<50	<0.50	<0.50	<0.50	<0.50	5.1	1.57	5.9
05/09/2005	P		253.19	6.0	14.0	7.10	--	246.09	64	<0.50	<0.50	<0.50	<0.50	6.9	3.5	--
08/11/2005	P		253.19	6.0	14.0	7.89	--	245.30	<50	<0.50	<0.50	<0.50	<0.50	10	0.04	6.3
12/02/2005	P		253.19	6.0	14.0	7.32	--	245.87	130	<0.50	<0.50	<0.50	0.57	9.0	1.85	6.6
02/15/2006	P		253.19	6.0	14.0	7.16	--	246.03	<50	<0.50	<0.50	<0.50	<0.50	2.8	0.9	6.2
5/19/2006	P		253.19	6.0	14.0	7.24	--	245.95	<50	0.71	<0.50	0.65	1.4	3.7	0.85	6.2
8/25/2006	P		253.19	6.0	14.0	7.48	--	245.71	50	<0.50	<0.50	<0.50	<0.50	8.3	0.49	6.2
11/2/2006	P		253.19	6.0	14.0	7.77	--	245.42	57	<0.50	<0.50	<0.50	<0.50	11	1.84	6.88
2/6/2007	NP		253.19	6.0	14.0	7.35	--	245.84	64	<0.50	<0.50	<0.50	<0.50	2.3	0.70	6.92

Table 1. Summary of Ground-Water Monitoring Data: Relative Water Elevations and Laboratory Analyses

Station #6002, 6235 Seminary Ave., Oakland, CA

Well and Sample Date	P/NP	Comments	TOC (feet msl)	Top of Screen (ft bgs)	Bottom of Screen (ft bgs)	DTW (feet bgs)	Product Thickness (feet)	Water Level Elevation (feet msl)	Concentrations in (µg/L)						DO (mg/L)	pH
									GRO/TPHg	Benzene	Toluene	Ethyl-Benzene	Total Xylenes	MtBE		
VW-1 Cont.																
5/9/2007	NP		253.19	6.0	14.0	7.40	--	245.79	<50	<0.50	<0.50	<0.50	<0.50	3.2	1.16	6.72
8/8/2007	NP		253.19	6.0	14.0	7.85	--	245.34	87	<0.50	<0.50	<0.50	<0.50	1.9	1.46	7.07
VW-2																
2/23/1996	--	i	--	--	--	6.92	--	--	--	--	--	--	--	--	--	--
8/8/2002	--	i	--	--	--	10.51	--	--	--	--	--	--	--	--	--	--
VW-3																
8/8/2002	--		--	5.5	14.5	8.85	--	--	<50	<0.50	<0.50	<0.50	<0.50	2.5	0.7	6.1
11/27/2002	--	i	--	5.5	14.5	8.80	--	--	--	--	--	--	--	--	--	--
2/10/2003	--	i	--	5.5	14.5	8.41	--	--	--	--	--	--	--	--	--	--
6/3/2003	--	i	--	5.5	14.5	8.71	--	--	--	--	--	--	--	--	--	--
8/14/2003	--	i	--	5.5	14.5	8.81	--	--	--	--	--	--	--	--	--	--
11/13/2003	--		--	5.5	14.5	8.75	--	--	--	--	--	--	--	--	--	--
02/13/2004	--		252.26	5.5	14.5	8.48	--	243.78	--	--	--	--	--	--	--	--
05/05/2004	--		252.26	5.5	14.5	8.85	--	243.41	--	--	--	--	--	--	--	--
08/30/2004	--		252.26	5.5	14.5	9.07	--	243.19	--	--	--	--	--	--	--	--
11/08/2004	--		252.26	5.5	14.5	8.32	--	243.94	--	--	--	--	--	--	--	--
02/07/2005	--		252.26	5.5	14.5	8.28	--	243.98	--	--	--	--	--	--	--	--
05/09/2005	--		252.26	5.5	14.5	8.44	--	243.82	--	--	--	--	--	--	--	--
08/11/2005	--		252.26	5.5	14.5	8.96	--	243.30	--	--	--	--	--	--	--	--
12/02/2005	--		252.26	5.5	14.5	8.26	--	244.00	--	--	--	--	--	--	--	--
02/15/2006	--		252.26	5.5	14.5	7.61	--	244.65	--	--	--	--	--	--	--	--
5/19/2006	--		252.26	5.5	14.5	8.83	--	243.43	--	--	--	--	--	--	--	--
8/25/2006	--		252.26	5.5	14.5	8.95	--	243.31	--	--	--	--	--	--	--	--
11/2/2006	--		252.26	5.5	14.5	9.08	--	243.18	--	--	--	--	--	--	--	--
2/6/2007	--		252.26	5.5	14.5	8.61	--	243.65	--	--	--	--	--	--	--	--
5/9/2007	--		252.26	5.5	14.5	8.79	--	243.47	--	--	--	--	--	--	--	--
8/8/2007	--		252.26	5.5	14.5	9.10	--	243.16	--	--	--	--	--	--	--	--
VW-4																
5/10/1996	--		--	5.5	14.5	8.58	--	--	13,000	2,500	41	420	660	43,000	--	--

Table 1. Summary of Ground-Water Monitoring Data: Relative Water Elevations and Laboratory Analyses

Station #6002, 6235 Seminary Ave., Oakland, CA

Well and Sample Date	P/NP	Comments	TOC (feet msl)	Top of Screen (ft bgs)	Bottom of Screen (ft bgs)	DTW (feet bgs)	Product Thickness (feet)	Water Level Elevation (feet msl)	Concentrations in (µg/L)						DO (mg/L)	pH
									GRO/TPHg	Benzene	Toluene	Ethyl-Benzene	Total Xylenes	MtBE		
VW-4 Cont.																
8/9/1996	--		--	5.5	14.5	11.70	--	--	<50	<0.5	<0.5	<0.5	<0.5	6,200	--	--
11/8/1996	--		--	5.5	14.5	9.38	--	--	7,800	510	7	180	370	21,000	--	--
3/21/1997	--		--	5.5	14.5	9.11	--	--	10,000	290	10	270	230	8,900	--	--
5/27/1997	--		--	5.5	14.5	9.34	--	--	--	--	--	--	--	--	--	--
8/5/1997	--		--	5.5	14.5	9.47	--	--	<10,000	180	<100	<100	110	12,000	--	--
10/29/1997	--		--	5.5	14.5	9.35	--	--	9,800	200	69	260	360	4,900	--	--
2/25/1998	--		--	5.5	14.5	7.08	--	--	<50	2.5	<0.5	<0.5	0.7	<3	--	--
5/12/1998	--		--	5.5	14.5	9.17	--	--	3,200	<20	22	29	52	2,100	--	--
7/28/1998	--		--	5.5	14.5	9.55	--	--	<10,000	<100	<100	<100	<100	5,100	--	--
10/27/1998	--		--	5.5	14.5	9.92	--	--	<50	<0.5	<0.5	<0.5	<0.5	<3	--	--
2/8/1999	--	c	--	5.5	14.5	7.50	--	--	<2,500	<25	<25	28	<25	2,400/3,100	--	--
6/1/1999	NP		--	5.5	14.5	9.87	--	--	2,100	2.5	1.1	2.5	15	3,300	2	6.69
8/25/1999	NP		--	5.5	14.5	9.78	--	--	1,300	4.4	4.9	1.7	2.9	4,600	0.36	7.94
10/29/1999	NP		--	5.5	14.5	9.93	--	--	1,400	<0.5	1.8	1.6	3	4,200	1.18	6.64
2/16/2000	NP		--	5.5	14.5	7.45	--	--	1,800	<0.5	2.9	15	10	3,400	1.01	--
6/23/2000	NP		--	5.5	14.5	9.74	--	--	1,360	<2.00	2.26	<2.00	2.25	4,900	1.5	--
6/23/2000	--	f	--	5.5	14.5	--	--	--	1,260	<2.00	<2.00	<2.00	2.73	2,720	--	--
8/17/2000	NP		--	5.5	14.5	9.95	--	--	2,230	<10.0	<10.0	<10.0	<10.0	5,310	1.13	--
11/10/2000	NP		--	5.5	14.5	9.22	--	--	1,390	18.5	<5.00	<5.00	<5.00	8,840	1.25	--
2/12/2001	NP		--	5.5	14.5	8.99	--	--	1,400	9.42	<2.00	17.8	16.1	3,570	0.91	--
4/13/2001	NP		--	5.5	14.5	7.80	--	--	556	3.82	<1.25	<1.25	<1.25	2,450	--	--
7/18/2001	--	f	--	5.5	14.5	--	--	--	2,000	8.7	2.2	<2.0	<2.0	3,400	--	--
7/18/2001	NP		--	5.5	14.5	7.73	--	--	2,100	9.2	<2.0	<2.0	<2.0	3,700	--	--
10/1/2001	--	f	--	5.5	14.5	--	--	--	1,800	<10	<10	<10	<10	5,800	--	--
10/1/2001	NP		--	5.5	14.5	6.69	--	--	2,000	<10	<10	<10	13	5,900	--	--
1/14/2002	P		--	5.5	14.5	5.93	--	--	580	<2.0	<2.0	<2.0	<2.0	2,700	--	--
4/3/2002	NP		--	5.5	14.5	9.60	--	--	1,400	5.2	16	<5.0	9.6	2,200	--	--
8/8/2002	--	i	--	5.5	14.5	10.01	--	--	--	--	--	--	--	--	--	--
11/27/2002	P		--	5.5	14.5	10.30	--	--	<10,000	<100	<100	<100	<100	3,800	1.7	6.7
2/10/2003	NP		--	5.5	14.5	10.06	--	--	<5,000	<50	<50	<50	<50	2,500	1	6.8
6/3/2003	--		--	5.5	14.5	10.04	--	--	<1,000	<10	<10	<10	<10	440	1.9	6.6

Table 1. Summary of Ground-Water Monitoring Data: Relative Water Elevations and Laboratory Analyses

Station #6002, 6235 Seminary Ave., Oakland, CA

Well and Sample Date	P/NP	Comments	TOC (feet msl)	Top of Screen (ft bgs)	Bottom of Screen (ft bgs)	DTW (feet bgs)	Product Thickness (feet)	Water Level Elevation (feet msl)	Concentrations in (µg/L)						DO (mg/L)	pH
									GRO/TPHg	Benzene	Toluene	Ethyl-Benzene	Total Xylenes	MtBE		
VW-4 Cont.																
8/14/2003	--		--	5.5	14.5	9.66	--	--	<500	<5.0	<5.0	<5.0	<5.0	170	0.8	6.7
11/13/2003	P		--	5.5	14.5	10.01	--	--	<500	<5.0	<5.0	<5.0	<5.0	130	1.7	6.4
02/13/2004	P		252.69	5.5	14.5	9.34	--	243.35	330	<2.5	<2.5	<2.5	3.0	210	2.0	6.6
05/05/2004	P		252.69	5.5	14.5	10.07	--	242.62	130	<1.0	<1.0	<1.0	<1.0	66	1.2	6.8
08/30/2004	P		252.69	5.5	14.5	10.32	--	242.37	<500	<5.0	<5.0	<5.0	<5.0	220	1.1	6.6
11/08/2004	P		252.69	5.5	14.5	9.35	--	243.34	480	<2.5	<2.5	<2.5	<2.5	140	1.1	6.0
02/07/2005	P		252.69	5.5	14.5	9.22	--	243.47	180	<0.50	<0.50	<0.50	<0.50	47	1.83	6.5
05/09/2005	P		252.69	5.5	14.5	9.78	--	242.91	120	0.63	<0.50	<0.50	<0.50	37	--	--
08/11/2005	P		252.69	5.5	14.5	10.11	--	242.58	74	<0.50	<0.50	<0.50	<0.50	15	0.7	6.7
12/02/2005	P		252.69	5.5	14.5	9.59	--	243.10	160	<1.0	<1.0	<1.0	<1.0	28	0.75	6.9
02/15/2006	P		252.69	5.5	14.5	8.56	--	244.13	64	<0.50	<0.50	<0.50	<0.50	11	0.9	6.9
5/19/2006	P		252.69	5.5	14.5	9.95	--	242.74	150	<0.50	<0.50	<0.50	1.2	16	0.76	6.7
8/25/2006	P		252.69	5.5	14.5	10.03	--	242.66	140	<0.50	<0.50	<0.50	<0.50	17	1.14	6.7
11/2/2006	P		252.69	5.5	14.5	10.13	--	242.56	120	<0.50	<0.50	<0.50	<0.50	20	1.76	6.49
2/6/2007	NP		252.69	5.5	14.5	9.57	--	243.12	<50	<0.50	<0.50	<0.50	<0.50	1.6	0.98	6.89
5/9/2007	NP		252.69	5.5	14.5	9.75	--	242.94	110	<0.50	<0.50	<0.50	<0.50	21	0.76	6.94
8/8/2007	NP		252.69	5.5	14.5	10.13	--	242.56	140	<0.50	<0.50	<0.50	<0.50	5.4	0.88	6.81

SYMBOLS AND ABBREVIATIONS:

-- = Not analyzed/applicable/measured/available
< = Not detected at or above laboratory reporting limit
BTEX = Benzene, toluene, ethylbenzene and xylenes
DO = Dissolved oxygen
DTW = Depth to water in ft bgs
ft bgs = feet below ground surface
ft MSL = feet above mean sea level
GRO = Gasoline range organics
GWE = Groundwater elevation measured in ft MSL
mg/L = Milligrams per liter
MTBE = Methyl tert butyl ether
NP = Well not purged prior to sampling
P = Well purged prior to sampling
TOC = Top of casing measured in ft MSL
TPH-g = Total petroleum hydrocarbons as gasoline
µg/L = Micrograms per liter

FOOTNOTES:

a = SPH detected and GWE corrected: Corrected elevation (Z') = Z + (h * 0.73) where: Z: measured elevation, h: floating product thickness, 0.73: density ratio of oil to water.
b = MTBE analyzed by EPA method 8240.
c = MTBE, sample also analyzed for fuel oxygenates.
d = Well was decommissioned on 2/12/1996.
e = Well inaccessible.
f = Duplicate
g = Well was dry.
h = Insufficient water to sample.
i = Well is not part of the sampling program and therefore was not sampled.
j = Sheen in well.
k = Could not locate well.

NOTES:

Wells surveyed to NAVD'88 datum on 1/27/2004.

Beginning on the first quarter 2003 sampling event (2/10/2003), TPH-g, BTEX and MTBE analyzed by EPA method 8260. Prior to 2/10/2003, BTEX by EPA method 8021B from 10/29/99 to 2/10/03, and 8020 prior to 10/29/99.

Beginning in the fourth quarter 2003, the laboratory modified the reported analyte list. TPH-g was changed to GRO. The resulting data may be impacted by the potential of non-TPH-g analytes within the requested fuel range resulting in a higher concentration being reported.

Beginning in the second quarter 2004, the carbon range for GRO was changed from C6-C10 to C4-C12.

Values for DO and pH were obtained through field measurements.

Note: The data within this table collected prior to April 2006 was provided to Broadbent & Associates, Inc. by Atlantic Richfield Company and their previous consultants. Broadbent & Associates, Inc. has not verified the accuracy of this information.

**Table 2. Summary of Fuel Additives Analytical Data
Station #6002, 6235 Seminary Ave., Oakland, CA**

Well and Sample Date	Concentrations in (µg/L)								Comments
	Ethanol	TBA	MTBE	DIPE	ETBE	TAME	1,2-DCA	EDB	
MW-3									
2/10/2003	<40	<20	<0.50	<0.50	<0.50	<0.50	--	--	
08/30/2004	<100	<20	0.72	<0.50	<0.50	<0.50	<0.50	<0.50	
08/11/2005	<100	<20	0.73	<0.50	<0.50	<0.50	<0.50	<0.50	
8/25/2006	<300	<20	<0.50	<0.50	<0.50	<0.50	<0.50	<0.50	
8/8/2007	<300	<20	<0.50	<0.50	<0.50	<0.50	<0.50	<0.50	
MW-4									
2/10/2003	<40	<20	<0.50	<0.50	<0.50	<0.50	--	--	
6/3/2003	<100	<20	<0.50	<0.50	<0.50	<0.50	--	--	
8/14/2003	<100	<20	<0.50	<0.50	<0.50	<0.50	<0.50	<0.50	
08/30/2004	<100	<20	<0.50	<0.50	<0.50	<0.50	<0.50	<0.50	
08/11/2005	<100	<20	<0.50	<0.50	<0.50	<0.50	<0.50	<0.50	
8/25/2006	<300	<20	<0.50	<0.50	<0.50	<0.50	<0.50	<0.50	
8/8/2007	<300	<20	<0.50	<0.50	<0.50	<0.50	<0.50	<0.50	
MW-5									
2/10/2003	<200	<100	100	<0.50	<0.50	<0.50	--	--	
6/3/2003	<1,000	<200	160	<5.0	<5.0	<5.0	--	--	
11/13/2003	<1,000	<200	90	<5.0	<5.0	<5.0	--	--	
02/13/2004	<200	41	90	<1.0	<1.0	<1.0	<1.0	<1.0	
05/05/2004	<500	<100	130	<2.5	<2.5	<2.5	<2.5	<2.5	
08/30/2004	<500	100	85	<2.5	<2.5	<2.5	<2.5	<2.5	
11/08/2004	<200	43	69	<1.0	<1.0	<1.0	<1.0	<1.0	
02/07/2005	<200	<40	15	<1.0	<1.0	<1.0	<1.0	<1.0	
05/09/2005	<200	<40	19	<1.0	<1.0	<1.0	<1.0	<1.0	a
08/11/2005	<500	<100	51	<2.5	<2.5	<2.5	<2.5	<2.5	
12/02/2005	<500	<100	13	<2.5	<2.5	<2.5	<2.5	<2.5	
02/15/2006	<300	<20	<0.50	<0.50	<0.50	<0.50	<0.50	<0.50	
5/19/2006	<300	25	15	<0.50	<0.50	<0.50	<0.50	<0.50	a, c
8/25/2006	<1,500	<100	17	<2.5	<2.5	<2.5	<2.5	<2.5	
11/2/2006	<600	70	18	<1.0	<1.0	<1.0	<1.0	<1.0	a
2/6/2007	<600	45	13	<1.0	<1.0	<1.0	<1.0	<1.0	

**Table 2. Summary of Fuel Additives Analytical Data
Station #6002, 6235 Seminary Ave., Oakland, CA**

Well and Sample Date	Concentrations in (µg/L)								Comments
	Ethanol	TBA	MTBE	DIPE	ETBE	TAME	1,2-DCA	EDB	
MW-5 Cont.									
5/9/2007	<600	69	31	<1.0	<1.0	<1.0	<1.0	<1.0	
8/8/2007	<600	<40	11	<1.0	<1.0	<1.0	<1.0	<1.0	
MW-6									
2/10/2003	<40	<20	<0.50	<0.50	<0.50	<0.50	--	--	
08/30/2004	<100	<20	<0.50	<0.50	<0.50	<0.50	<0.50	<0.50	
08/11/2005	<100	<20	<0.50	<0.50	<0.50	<0.50	<0.50	<0.50	
8/25/2006	<300	<20	<0.50	<0.50	<0.50	<0.50	<0.50	<0.50	
8/8/2007	<300	<20	<0.50	<0.50	<0.50	<0.50	<0.50	<0.50	
MW-7									
2/10/2003	<40	<20	<0.50	<0.50	<0.50	<0.50	--	--	
6/3/2003	<100	<20	<0.50	<0.50	<0.50	<0.50	--	--	
8/14/2003	<100	<20	<0.50	<0.50	<0.50	<0.50	<0.50	<0.50	
08/11/2005	<100	<20	<0.50	<0.50	<0.50	<0.50	<0.50	<0.50	
8/25/2006	<300	<20	<0.50	<0.50	<0.50	<0.50	<0.50	<0.50	
MW-8									
2/10/2003	<40	<20	<0.50	<0.50	<0.50	<0.50	--	--	
6/3/2003	<100	<20	<0.50	<0.50	<0.50	<0.50	--	--	
8/14/2003	<100	<20	<0.50	<0.50	<0.50	<0.50	<0.50	<0.50	
08/30/2004	<100	<20	<0.50	<0.50	<0.50	<0.50	<0.50	<0.50	
02/15/2006	--	--	--	--	--	--	--	--	Well inaccessible
8/25/2006	<300	<20	<0.50	<0.50	<0.50	<0.50	<0.50	<0.50	
VW-1									
2/10/2003	<40	<20	11	<0.50	<0.50	<0.50	--	--	
6/3/2003	<100	<20	13	<0.50	<0.50	<0.50	--	--	
8/14/2003	<100	<20	18	<0.50	<0.50	<0.50	<0.50	<0.50	
11/13/2003	<100	<20	13	<0.50	<0.50	<0.50	--	--	
02/13/2004	<100	<20	8.0	<0.50	<0.50	<0.50	<0.50	<0.50	
05/05/2004	<100	<20	11	<0.50	<0.50	<0.50	<0.50	<0.50	
08/30/2004	<100	<20	24	<0.50	<0.50	<0.50	<0.50	<0.50	

Table 2. Summary of Fuel Additives Analytical Data
Station #6002, 6235 Seminary Ave., Oakland, CA

Well and Sample Date	Concentrations in (µg/L)								Comments
	Ethanol	TBA	MTBE	DIPE	ETBE	TAME	1,2-DCA	EDB	
VW-1 Cont.									
11/08/2004	<100	<20	27	<0.50	<0.50	<0.50	<0.50	<0.50	
02/07/2005	<100	<20	5.1	<0.50	<0.50	<0.50	<0.50	<0.50	
05/09/2005	<100	<20	6.9	<0.50	<0.50	<0.50	<0.50	<0.50	
08/11/2005	<100	<20	10	<0.50	<0.50	<0.50	<0.50	<0.50	
12/02/2005	<100	<20	9.0	<0.50	<0.50	<0.50	<0.50	<0.50	a
02/15/2006	<300	<20	2.8	<0.50	<0.50	<0.50	<0.50	<0.50	
5/19/2006	<300	<20	3.7	<0.50	<0.50	<0.50	<0.50	<0.50	a, c
8/25/2006	<300	<20	8.3	<0.50	<0.50	<0.50	<0.50	<0.50	
11/2/2006	<300	<20	11	<0.50	<0.50	<0.50	<0.50	<0.50	a
2/6/2007	<300	<20	2.3	<0.50	<0.50	<0.50	<0.50	<0.50	
5/9/2007	<300	<20	3.2	<0.50	<0.50	<0.50	<0.50	<0.50	
8/8/2007	<300	<20	1.9	<0.50	<0.50	<0.50	<0.50	<0.50	
VW-3									
VW-4									
2/10/2003	<4,000	<2,000	2500	<0.50	<0.50	<0.50	--	--	
6/3/2003	<2,000	4,100	440	<10	<10	<10	--	--	
8/14/2003	<1,000	3,200	170	<5.0	<5.0	<5.0	<5.0	<5.0	
11/13/2003	<1,000	3,300	130	<5.0	<5.0	<5.0	--	--	
02/13/2004	<500	1,300	210	<2.5	<2.5	<2.5	<2.5	<2.5	
05/05/2004	<200	1,500	66	<1.0	1.3	<1.0	<1.0	<1.0	
08/30/2004	<1,000	5,400	220	<5.0	5.4	<5.0	<5.0	<5.0	
11/08/2004	<500	2,700	140	<2.5	<2.5	<2.5	<2.5	<2.5	
02/07/2005	<100	1,000	47	<0.50	0.89	<0.50	<0.50	<0.50	
05/09/2005	<100	1,200	37	<0.50	0.92	<0.50	<0.50	<0.50	
08/11/2005	<100	2,000	15	<0.50	1.8	<0.50	<0.50	<0.50	b
12/02/2005	<200	2,400	28	<1.0	2.2	<1.0	<1.0	<1.0	
02/15/2006	<300	230	11	<0.50	<0.50	<0.50	<0.50	<0.50	
5/19/2006	<300	580	16	<0.50	<0.50	<0.50	<0.50	<0.50	a
8/25/2006	<300	1,900	17	<0.50	1.9	<0.50	<0.50	<0.50	
11/2/2006	<300	2,400	20	<0.50	2.3	<0.50	<0.50	<0.50	a

**Table 2. Summary of Fuel Additives Analytical Data
Station #6002, 6235 Seminary Ave., Oakland, CA**

Well and Sample Date	Concentrations in (µg/L)								Comments
	Ethanol	TBA	MTBE	DIPE	ETBE	TAME	1,2-DCA	EDB	
VW-4 Cont.									
2/6/2007	<300	<20	1.6	<0.50	<0.50	<0.50	<0.50	<0.50	
5/9/2007	<300	410	21	<0.50	<0.50	<0.50	<0.50	<0.50	
8/8/2007	<300	1,300	5.4	<0.50	1.2	<0.50	<0.50	<0.50	

SYMBOLS AND ABBREVIATIONS:

-- = Not analyzed/applicable/measured/available
< = Not detected at or above the laboratory reporting limit
1,2-DCA = 1,2-Dichloroethane
DIPE = Di-isopropyl ether
EDB = 1,2-Dibromoethane
ETBE = Ethyl tert-butyl ether
MTBE = Methyl tert-butyl ether
TAME = tert-Amyl methyl ether
TBA = tert-Butyl alcohol
µg/L = Micrograms per Liter

FOOTNOTES:

a = Calibration verification for ethanol was within the method limits but outside the contract limits.
b = The initial analysis for TBA was within holding time but required dilution.

NOTES:

All volatile organic compounds analyzed using EPA Method 8260B.

The data within this table collected prior to August 2002 was provided to URS by RM and their previous consultants. URS has not verified the accuracy of this information.

Note: The data within this table collected prior to April 2006 was provided to Broadbent & Associates, Inc. by Atlantic Richfield Company and their previous consultants. Broadbent & Associates, Inc. has not verified the accuracy of this information.

**Table 3. Historical Ground-Water Flow Direction and Gradient
Station #6002, 6235 Seminary Ave., Oakland, CA**

Date Sampled	Approximate Flow Direction	Approximate Hydraulic Gradient
3/15/1995	West-Southwest	0.08
5/30/1995	West-Southwest	0.08
9/1/1995	West-Southwest	0.09
11/13/1995	West-Southwest	0.08
2/23/1996	West-Southwest	0.08
5/10/1996	West-Southwest	0.08
8/9/1996	Southwest	0.08
11/8/1996	Southwest	0.06
3/21/1997	West-Southwest	0.05
5/27/1997	West-Southwest	0.07
8/5/1997	West	0.08
10/29/1997	West-Southwest	0.04
2/25/1998	West-Southwest	0.05
5/12/1998	West	0.07
7/28/1998	West	0.07
10/27/1998	West-Southwest	0.06
2/8/1999	West-Southwest	0.07
6/1/1999	West-Northwest	0.07
8/25/1999	West-Southwest	0.07
10/29/1999	West	0.07
2/16/2000	Southwest	0.05
6/23/2000	West	0.04
8/17/2000	West	0.09
11/10/2000	West-Southwest	0.08
2/12/2001	West-Southwest	0.07
4/13/2001	West	0.09
7/18/2001	West	0.08
10/1/2001	West-Southwest	0.08
1/14/2002	West-Southwest	0.07
4/3/2002	West-Southwest	0.08
8/8/2002	West-Southwest	0.09
11/27/2002	West-Southwest	0.08
2/10/2003	Southwest	0.06
6/3/2003	West	0.07
8/14/2003	West-Southwest	0.07
11/13/2003	West-Southwest	0.07
2/13/2004	Southwest	0.05
5/4/2004	Southwest	0.06
8/30/2004	Southwest	0.07
11/8/2004	Southwest	0.10
2/7/2005	Southwest	0.1
5/9/2005	Southwest	0.07

**Table 3. Historical Ground-Water Flow Direction and Gradient
Station #6002, 6235 Seminary Ave., Oakland, CA**

Date Sampled	Approximate Flow Direction	Approximate Hydraulic Gradient
8/11/2005	West	0.07
12/2/2005	Southwest	0.10
2/15/2006	Southwest	0.07
4/28/2006	West	0.07
8/25/2006	West	0.07
11/2/2006	West	0.09
2/6/2007	West	0.05
5/9/2007	West	0.05
8/8/2007	West	0.05

Note: The data within this table collected prior to April 2006 was provided to Broadbent & Associates, Inc. by Atlantic Richfield Company and their previous consultants. Broadbent & Associates, Inc. has not verified the accuracy of this information.

APPENDIX A

**STRATUS GROUND-WATER SAMPLING DATA PACKAGE
(INCLUDES FIELD DATA SHEET AND LABORATORY ANALYTICAL REPORT
WITH CHAIN-OF-CUSTODY DOCUMENTATION)**



3330 Cameron Park Drive, Ste 550
Cameron Park, California 95682
(530) 676-6004 ~ Fax: (530) 676-6005

September 6, 2007

Mr. Rob Miller
Broadbent & Associates, Inc.
2000 Kirman Avenue
Reno, NV 89502

Re: Groundwater Sampling Data Package, BP Service Station No. 6002, located at 6235
Seminary Avenue, Oakland, California

General Information

Data Submittal Prepared / Reviewed by: Sandy Hayes / Jay Johnson

Phone Number: (530) 676-6000

On-Site Supplier Representative: Jerry Gonzales

Sampling Date: August 8, 2007

Arrival: 11:50 *Departure:* 14:20

Weather Conditions: Clear

Unusual Field Conditions: None

Scope of Work Performed: Quarterly monitoring and sampling

Variations from Work Scope: Well MW-7 was dry. Well MW-8 is on a residential property behind the station. Due to several vehicles and vehicle parts along with overgrown grass and ivy in the yard where the well is, the well could not be located.

This submittal presents the tabulation of data collected in association with routine groundwater monitoring. The attachments include field sheets, non-hazardous waste data form, chain of custody documentation, and certified analytical results. The information is being provided to BP-ARCO's Scoping Supplier for use in preparing a report for regulatory submittal. This submittal is limited to presentation of collected data and does not include data interpretation or conclusions or recommendations. Any questions concerning this submittal should be addressed to the Preparer/Reviewer identified above.

Sincerely,

STRATUS ENVIRONMENTAL, INC.

Jay R. Johnson, P.G.
Project Manager



Attachments:

- Field Data Sheets
- Non-Hazardous Waste Data Form
- Chain of Custody Documentation
- Certified Analytical Results

cc: Mr. Paul Supple, BP/ARCO

BP ALAMEDA PORTFOLIO

HYDROLOGIC DATA SHEET

AK-11:50 DP 1420

Gauge Date: 8-8-07

Project Name: Oakland - 6235 Seminary Ave.

Field Technician: Jerry

Project Number: 6002

TOC = Top of Well Casing Elevation
 DTP = Depth to Free Product (FP or NAP) Below TOC
 DTW = Depth to Groundwater Below TOC
 DTB = Depth to Bottom of Well Casing Below TOC

DIA = Well Casing Diameter
 ELEV = Groundwater Elevation
 DUP = Duplicate

WELL OR LOCATION	TIME	MEASUREMENT						PURGE & SAMPLE	SHEEN CONFIRMATION (w/bailer)	COMMENTS
		TOC	DTP	DTW	DTB	DIA	ELEV			
MW-3	12:01			8.67	24.30			N		
MW-4	12:10			12.85	24.05			N		
MW-5				12.88	24.90					
MW-6	11:55			7.01	32.90			P		
MW-7	12:06			Dry	13.18					
MW-8									Left casing well	
VW-1				7.85	13.08			N		
VW-3	12:17			9.10	14.10					
VW-4	12:19			10.13	14.81			N		

BP ALAMEDA PORTFOLIO
WATER SAMPLE FIELD DATA SHEET

PROJECT #: 6002 PURGED BY: Jc WELL I.D.: MW-3
 CLIENT NAME: _____ SAMPLED BY: S SAMPLE I.D.: _____
 LOCATION: Oakland - 6235 Seminary Ave. QA SAMPLES: _____

DATE PURGED 8-8-07 START (2400hr) 13:54 END (2400hr) 13:56
 DATE SAMPLED 8-8-07 SAMPLE TIME (2400hr) 13:55
 SAMPLE TYPE: Groundwater Surface Water _____ Treatment Effluent _____ Other _____

CASING DIAMETER: 2" _____ 3" _____ 4" 5" _____ 6" _____ 8" _____ Other _____
 Casing Volume: (gallons per foot) (0.17) (0.38) (0.67) (1.02) (1.50) (2.60) ()

DEPTH TO BOTTOM (feet) = 24.30 CASING VOLUME (gal) = 10.9
 DEPTH TO WATER (feet) = 8.69 CALCULATED PURGE (gal) = 31.9
 WATER COLUMN HEIGHT (feet) = 15.6 ACTUAL PURGE (gal) = NP-0

FIELD MEASUREMENTS

DATE	TIME (2400hr)	VOLUME (gal)	TEMP. (degrees F)	CONDUCTIVITY (umhos/cm)	pH (units)	COLOR (visual)	TURBIDITY (NTU)
<u>8-8-07</u>	<u>13:56</u>	<u>0</u>	<u>17.9</u>	<u>537</u>	<u>6.90</u>	<u>clear</u>	

SAMPLE DEPTH TO WATER: 8.69 SAMPLE INFORMATION SAMPLE TURBIDITY: clear

80% RECHARGE: YES NO ANALYSES: S-W-0
 ODOR: NO SAMPLE VESSEL / PRESERVATIVE: 3 Van-HAL

PURGING EQUIPMENT

Bladder Pump
 Centrifugal Pump
 Submersible Pump
 Peristaltic Pump
 Other: _____
 Pump Depth: 0

Bailer (Teflon)
 Bailer (PVC)
 Bailer (Stainless Steel)
 Dedicated _____

SAMPLING EQUIPMENT

Bladder Pump
 Centrifugal Pump
 Submersible Pump
 Peristaltic Pump
 Other: _____

Bailer (Teflon)
 Bailer (PVC or disposable)
 Bailer (Stainless Steel)
 Dedicated _____

WELL INTEGRITY: good LOCK#: MW-3
 REMARKS: D.O 1.16

SIGNATURE: _____ Page ____ of ____

BP ALAMEDA PORTFOLIO

WATER SAMPLE FIELD DATA SHEET

PROJECT #: 6002 PURGED BY: [Signature] WELL I.D.: 11W4
 CLIENT NAME: _____ SAMPLED BY: [Signature] SAMPLE I.D.: 11W4
 LOCATION: Oakland - 6235 Seminary Ave. QA SAMPLES: _____

DATE PURGED 8-8-07 START (2400hr) 13:05 END (2400hr) 13:05
 DATE SAMPLED _____ SAMPLE TIME (2400hr) 13:06
 SAMPLE TYPE: Groundwater Surface Water _____ Treatment Effluent _____ Other _____

CASING DIAMETER: 2" _____ 3" _____ 4" 5" _____ 6" _____ 8" _____ Other _____
 Casing Volume: (gallons per foot) (0.17) (0.38) (0.67) (1.02) (1.50) (2.60) ()

DEPTH TO BOTTOM (feet) = 24.05 CASING VOLUME (gal) = 9.3
 DEPTH TO WATER (feet) = 12.95 CALCULATED PURGE (gal) = 233
 WATER COLUMN HEIGHT (feet) = 11.1 ACTUAL PURGE (gal) = NP-0

FIELD MEASUREMENTS

DATE	TIME (2400hr)	VOLUME (gal)	TEMP. (degrees F)	CONDUCTIVITY (umhos/cm)	pH (units)	COLOR (visual)	TURBIDITY (NTU)
<u>8-8-07</u>	<u>13:07</u>	<u>0</u>	<u>71.6</u>	<u>337.9</u>	<u>7.1</u>	<u>Clear</u>	

SAMPLE INFORMATION

SAMPLE DEPTH TO WATER: 12.95 SAMPLE TURBIDITY: Clear

80% RECHARGE: YES NO ANALYSES: SW-0
 ODOR: No SAMPLE VESSEL / PRESERVATIVE: 6 You-H Cl

PURGING EQUIPMENT

Bladder Pump Bailer (Teflon)
 Centrifugal Pump Bailer (PVC)
 Submersible Pump Bailer (Stainless Steel)
 Peristaltic Pump Dedicated _____
 Other: _____
 Pump Depth: _____

SAMPLING EQUIPMENT

Bladder Pump Bailer (Teflon)
 Centrifugal Pump Bailer (PVC or disposable)
 Submersible Pump Bailer (Stainless Steel)
 Peristaltic Pump Dedicated _____
 Other: _____

WELL INTEGRITY: good LOCK#: Master

REMARKS: DO. 170

SIGNATURE: [Signature] Page _____ of _____

BP ALAMEDA PORTFOLIO
WATER SAMPLE FIELD DATA SHEET

PROJECT #: 6002 PURGED BY: [Signature] WELL I.D.: MW-5
 CLIENT NAME: _____ SAMPLED BY: [Signature] SAMPLE I.D.: MW-5
 LOCATION: Oakland - 6235 Seminary Ave. QA SAMPLES: _____

DATE PURGED 8-8-07 START (2400hr) 13:19 END (2400hr) 13:21
 DATE SAMPLED 8-8-07 SAMPLE TIME (2400hr) 13:20
 SAMPLE TYPE: Groundwater Surface Water _____ Treatment Effluent _____ Other _____

CASING DIAMETER: 2" _____ 3" _____ 4" X 5" _____ 6" _____ 8" _____ Other _____
 Casing Volume: (gallons per foot) (0.17) (0.38) (0.67) (1.02) (1.50) (2.60) ()

DEPTH TO BOTTOM (feet) = 24.90 CASING VOLUME (gal) = 8.0
 DEPTH TO WATER (feet) = 12.88 CALCULATED PURGE (gal) = 7.91
 WATER COLUMN HEIGHT (feet) = 12.0 ACTUAL PURGE (gal) = NP @

FIELD MEASUREMENTS

DATE	TIME (2400hr)	VOLUME (gal)	TEMP. (degrees F)	CONDUCTIVITY (umhos/cm)	pH (units)	COLOR (visual)	TURBIDITY (NTU)
<u>8-8-07</u>	<u>13:21</u>	<u>8</u>	<u>19.7</u>	<u>753</u>	<u>6.94</u>	<u>Clear</u>	

SAMPLE INFORMATION

SAMPLE DEPTH TO WATER: 1288 SAMPLE TURBIDITY: Clear
 80% RECHARGE: YES NO ANALYSES: S-W-0
 ODOR: Yes SAMPLE VESSEL / PRESERVATIVE: 3 Vol-HCl

PURGING EQUIPMENT

Bladder Pump Bailer (Teflon)
 Centrifugal Pump Bailer (PVC)
 Submersible Pump Bailer (Stainless Steel)
 Peristaltic Pump Dedicated _____
 Other: _____
 Pump Depth: _____

SAMPLING EQUIPMENT

Bladder Pump Bailer (Teflon)
 Centrifugal Pump Bailer (PVC or disposable)
 Submersible Pump Bailer (Stainless Steel)
 Peristaltic Pump Dedicated _____
 Other: _____

WELL INTEGRITY: Good LOCK#: MW-5
 REMARKS: D.O. 1.16

SIGNATURE: [Signature] Page _____ of _____

BP ALAMEDA PORTFOLIO
WATER SAMPLE FIELD DATA SHEET

PROJECT #: 6002 PURGED BY: [Signature] WELL ID.: MW-6
 CLIENT NAME: _____ SAMPLED BY: [Signature] SAMPLE ID.: MW-6
 LOCATION: Oakland - 6235 Seminary Ave. QA SAMPLES: _____

DATE PURGED 8-8-07 START (2400hr) 12:35 END (2400hr) 12:38
 DATE SAMPLED 8-8-07 SAMPLE TIME (2400hr) 12:55
 SAMPLE TYPE: Groundwater Surface Water _____ Treatment Effluent _____ Other _____

CASING DIAMETER: 2" 3" _____ 4" _____ 5" _____ 6" _____ 8" _____ Other _____
 Casing Volume: (gallons per foot) (0.17) (0.38) (0.67) (1.02) (1.50) (2.60) ()

DEPTH TO BOTTOM (feet) = 37.90 CASING VOLUME (gal) = 4.9
 DEPTH TO WATER (feet) = 7.01 CALCULATED PURGE (gal) = 13.2
 WATER COLUMN HEIGHT (feet) = 25.8 ACTUAL PURGE (gal) = 12.5

FIELD MEASUREMENTS

DATE	TIME (2400hr)	VOLUME (gal)	TEMP. (degrees F)	CONDUCTIVITY (umhos/cm)	pH (units)	COLOR (visual)	TURBIDITY (NTU)
<u>8-8-07</u>	<u>12:36</u>	<u>4.5</u>	<u>21.2</u>	<u>3795</u>	<u>7.00</u>	<u>clear</u>	
<u>/</u>	<u>12:37</u>	<u>9.0</u>	<u>21.6</u>	<u>3869</u>	<u>7.06</u>	<u>/</u>	
<u>/</u>	<u>12:38</u>	<u>13.5</u>	<u>21.6</u>	<u>3895</u>	<u>7.12</u>	<u>/</u>	

SAMPLE INFORMATION

SAMPLE DEPTH TO WATER: 9.91 SAMPLE TURBIDITY: clear

80% RECHARGE: YES NO ANALYSES: SW-0
 ODOR: no SAMPLE VESSEL / PRESERVATIVE: 3 Vol-HCl

PURGING EQUIPMENT

____ Bladder Pump _____ Bailer (Teflon)
 Centrifugal Pump _____ Bailer (PVC)
 _____ Submersible Pump _____ Bailer (Stainless Steel)
 _____ Peristaltic Pump _____ Dedicated _____
 Other: _____
 Pump Depth: _____

SAMPLING EQUIPMENT

____ Bladder Pump _____ Bailer (Teflon)
 Centrifugal Pump Bailer (_____ PVC or disposable)
 _____ Submersible Pump _____ Bailer (Stainless Steel)
 _____ Peristaltic Pump _____ Dedicated _____
 Other: _____

WELL INTEGRITY: good LOCK#: Master

REMARKS: DO 2.69

SIGNATURE: [Signature] Page _____ of _____

BP ALAMEDA PORTFOLIO

WATER SAMPLE FIELD DATA SHEET

PROJECT #: 6002 PURGED BY: [Signature] WELL I.D.: VW-1
 CLIENT NAME: _____ SAMPLED BY: [Signature] SAMPLE I.D.: VW-1
 LOCATION: Oakland - 6235 Seminary Ave. QA SAMPLES: _____

DATE PURGED 8-8-07 START (2400hr) 13:40 END (2400hr) 13:42
 DATE SAMPLED 8-8-07 SAMPLE TIME (2400hr) 13:41
 SAMPLE TYPE: Groundwater Surface Water _____ Treatment Effluent _____ Other _____

CASING DIAMETER: 2" _____ 3" _____ 4" _____ 5" _____ 6" _____ 8" _____ Other _____
 Casing Volume: (gallons per foot) (0.17) (0.38) (0.67) (1.02) (1.50) (2.60) ()

DEPTH TO BOTTOM (feet) = 13.08 CASING VOLUME (gal) = 3.5
 DEPTH TO WATER (feet) = 7.85 CALCULATED PURGE (gal) = 10.5
 WATER COLUMN HEIGHT (feet) = 5.2 ACTUAL PURGE (gal) = NP-0

FIELD MEASUREMENTS

DATE	TIME (2400hr)	VOLUME (gal)	TEMP. (degrees F)	CONDUCTIVITY (umhos/cm)	pH (units)	COLOR (visual)	TURBIDITY (NTU)
<u>8-8-07</u>	<u>1342</u>	<u>0</u>	<u>70.3</u>	<u>418.2</u>	<u>7.09</u>	<u>clear</u>	

SAMPLE DEPTH TO WATER: 7.85 SAMPLE INFORMATION SAMPLE TURBIDITY: clear

80% RECHARGE: YES NO ANALYSES: S.W. 0
 ODOR: NO SAMPLE VESSEL / PRESERVATIVE: _____

PURGING EQUIPMENT

Bladder Pump Bailer (Teflon)
 Centrifugal Pump Bailer (PVC)
 Submersible Pump Bailer (Stainless Steel)
 Peristaltic Pump Dedicated _____
 Other: _____
 Pump Depth: 0

SAMPLING EQUIPMENT

Bladder Pump Bailer (Teflon)
 Centrifugal Pump Bailer (PVC or disposable)
 Submersible Pump Bailer (Stainless Steel)
 Peristaltic Pump Dedicated _____
 Other: _____

WELL INTEGRITY: _____ LOCK#: Mastey

REMARKS: DO 1.46

SIGNATURE: [Signature] Page _____ of _____

BP ALAMEDA PORTFOLIO
WATER SAMPLE FIELD DATA SHEET

PROJECT #: 6002 PURGED BY: [Signature] WELL I.D.: VW-4
 CLIENT NAME: _____ SAMPLED BY: [Signature] SAMPLE I.D.: VW-4
 LOCATION: Oakland - 6235 Seminary Ave. QA SAMPLES: _____

DATE PURGED 8-8-07 START (2400hr) 13:30 END (2400hr) 13:32
 DATE SAMPLED 8-8-07 SAMPLE TIME (2400hr) 13:31
 SAMPLE TYPE: Groundwater Surface Water _____ Treatment Effluent _____ Other _____

CASING DIAMETER: 2" _____ 3" _____ 4" 5" _____ 6" _____ 8" _____ Other _____
 Casing Volume: (gallons per foot) (0.17) (0.38) (0.67) (1.02) (1.50) (2.60) ()

DEPTH TO BOTTOM (feet) = 14.81 CASING VOLUME (gal) = 3.0
 DEPTH TO WATER (feet) = 10.13 CALCULATED PURGE (gal) = 9.2
 WATER COLUMN HEIGHT (feet) = 4.6 ACTUAL PURGE (gal) = NP

FIELD MEASUREMENTS

DATE	TIME (2400hr)	VOLUME (gal)	TEMP. (degrees F)	CONDUCTIVITY (umhos/cm)	pH (units)	COLOR (visual)	TURBIDITY (NTU)
<u>8-8-07</u>	<u>13:32</u>	<u>0</u>	<u>20.3</u>	<u>621</u>	<u>6.81</u>	<u>clear</u>	
_____	_____	_____	_____	_____	_____	_____	_____
_____	_____	_____	_____	_____	_____	_____	_____
_____	_____	_____	_____	_____	_____	_____	_____
_____	_____	_____	_____	_____	_____	_____	_____
_____	_____	_____	_____	_____	_____	_____	_____
_____	_____	_____	_____	_____	_____	_____	_____
_____	_____	_____	_____	_____	_____	_____	_____
_____	_____	_____	_____	_____	_____	_____	_____
_____	_____	_____	_____	_____	_____	_____	_____

SAMPLE INFORMATION

SAMPLE DEPTH TO WATER: 10.13 SAMPLE TURBIDITY: clear

80% RECHARGE: YES NO ANALYSES: SW-0
 ODOR: NO SAMPLE VESSEL / PRESERVATIVE: 3 Vol. HCl

PURGING EQUIPMENT

_____ Bladder Pump _____ Bailer (Teflon)
 _____ Centrifugal Pump _____ Bailer (PVC)
 _____ Submersible Pump _____ Bailer (Stainless Steel)
 _____ Peristaltic Pump _____ Dedicated _____
 Other: _____
 Pump Depth: 0

SAMPLING EQUIPMENT

_____ Bladder Pump _____ Bailer (Teflon)
 _____ Centrifugal Pump Bailer (_____ PVC or disposable)
 _____ Submersible Pump _____ Bailer (Stainless Steel)
 _____ Peristaltic Pump _____ Dedicated _____
 Other: _____

WELL INTEGRITY: good LOCK#: None

REMARKS: DO-0.88

SIGNATURE: [Signature] Page _____ of _____

NO. 662255

NON-HAZARDOUS WASTE DATA FORM

SITE:

EPA I.D. NO.

NOT REQUIRED

NAME BP WEST COAST PRODUCTS LLC ARCO # 6002

PROFILE NO.

ADDRESS P.O. BOX 80249 RANCHO SANTA MARGARITA

CITY, STATE, ZIP CA 92688

PHONE NO. () ()

CONTAINERS: No. _____ VOLUME 19.5 _____ WEIGHT _____

TYPE: TANK TRUCK DUMP TRUCK DRUMS CARTONS OTHER _____

WASTE DESCRIPTION NON-HAZARDOUS WATER GENERATING PROCESS WELL PURGING/DECON WATER

COMPONENTS OF WASTE			COMPONENTS OF WASTE		
1	PPM	%	5	PPM	%
WATER	99-100%				
TPH	<1%				
			BEST#		

PROPERTIES: 7-10 SOLID LIQUID SLUDGE SLURRY OTHER _____

HANDLING INSTRUCTIONS: WEAR ALL APPROPRIATE PROTECTIVE CLOTHING

THE GENERATOR CERTIFIES THAT THE WASTE AS DESCRIBED IS 100% NON-HAZARDOUS.

Larry Moothart
Larry Moothart BEST for BP
TYPED OR PRINTED FULL NAME & SIGNATURE

8-9-07
DATE

TO BE COMPLETED BY GENERATOR

TRANSPORTER

NAME Transporter #1 STRATUS ENVIRONMENTAL Transporter #2

EPA I.D. NO.

ADDRESS 3330 CAMERON PARK DRIVE STE 550

SERVICE ORDER NO. _____

CITY, STATE, ZIP CAMERON PARK CA 95682

PICK UP DATE _____

PHONE NO. 530-676-6004

Jon G...
TYPED OR PRINTED FULL NAME & SIGNATURE

8-9-07
DATE

TRUCK, UNIT, I.D. NO. _____

EPA I.D. NO.

NAME SEAPORT REFINING & ENVIRONMENTAL, LLC

DISPOSAL METHOD

ADDRESS 700 SEAPORT BLVD.

LANDFILL OTHER _____

CITY, STATE, ZIP REDWOOD CITY, CA 94063

PHONE NO. 650-364-1024

TYPED OR PRINTED FULL NAME & SIGNATURE

DATE

TSD FACILITY

GEN	OLD/NEW	L	A	TONS
TRANS		S	B	
C/O		RT/CD	HWDF	NONE

DISCREPANCY



Chain of Custody Record

Project Name: BP 6002
 BP BU/AR Region/Enfos Segment: BP > Americas > West > Retail > CA > Alameda > 6002
 State or Lead Regulatory Agency: _____
 Requested Due Date (mm/dd/yy): _____

On-site Time	<u>11:50</u>	Temp:	<u>70</u>
Off-site Time	<u>14:20</u>	Temp:	<u>75</u>
Sky Conditions	<u>clear</u>		
Meteorological Events	<u>NONE</u>		
Wind Speed:	<u>0</u>	Direction:	<u>E</u>

Lab Name: <u>TestAmerica</u>	BP/AR Facility No.: <u>6002</u>	Consultant/Contractor: <u>Stratus Environmental, Inc.</u>
Address: <u>885 Jarvis Drive</u>	BP/AR Facility Address: <u>6235 Seminary Avenue, Oakland</u>	Address: <u>3330 Cameron Park Drive, Suite 550</u>
<u>Morgan Hill, CA 95937</u>	Site Lat/Long:	<u>Cameron Park, CA 95682</u>
Lab PM: <u>Lisa Race</u>	California Global ID #: <u>T0600100105</u>	Consultant/Contractor Project No.: <u>E6002-04</u>
Tele/Fax: <u>408-782-8156 408-782-6308 (fax)</u>	Enfos Project No.: <u>G0C8K-0015</u>	Consultant/Contractor PM: <u>Jay Johnson</u>
BP/AR PM Contact: <u>Paul Supple</u>	Provision or RCOP (circle one) <u>Provision</u>	Tele/Fax: <u>(530) 676-6000 / (530) 676-6005</u>
Address: <u>2010 Crow Canyon Place, Suite 150</u>	Phase/WBS: <u>04-Monitoring</u>	Report Type & QC Level: <u>Level 1 with EDF</u>
<u>San Ramon, CA</u>	Sub Phase/Task: <u>03-Analytical</u>	E-mail EDD To: <u>shayes@stratusinc.net</u>
Tele/Fax: <u>925-275-3506</u>	Cost Element: <u>01-Contractor labor</u>	Invoice to: <u>Atlantic Richfield Co</u>

Item No.	Sample Description	Time	Date	Matrix			Laboratory No.	No. of Containers	Preservative					Requested Analysis				Sample Point Lat/Long and Comments *Oxy = MTBD, TAME, ETBE, DIPE, TBA		
				Soil/Solid	Water/Liquid	Air			Unpreserved	H ₂ SO ₄	HNO ₃	HCl	Methanol	GROBTEX/Oxy*	1,2 DCA	EDB	Ethanol by 8260			
1	MW-3	13:55	8-8-07	X			3			X			X	X	X	X				
2	MW-4	13:06		X			6			X			X	X	X	X				
3	MW-5	13:20		X			3			X			X	X	X	X				
4	MW-6	12:55		X			3			X			X	X	X	X				
5	MW-7			X						X			X	X	X	X				
6	MW-8			X						X			X	X	X	X				
7	VW-1	13:41		X			3			X			X	X	X	X				
8	VW-4	13:31		X			3			X			X	X	X	X				
9	TB 6002	5:00		X			2			X			X	X	X	X				HOLD
10																				

Sampler's Name: <u>Jerry Go'20105</u>	Relinquished By / Affiliation	Date	Time	Accepted By / Affiliation	Date	Time
Sampler's Company: <u>Doulo's ENV</u>	<u>[Signature]</u>	<u>8/10/07</u>	<u>15:00</u>	<u>[Signature]</u>	<u>8/10/07</u>	<u>15:00</u>
Shipment Date:						
Shipment Method:						
Shipment Tracking No:						

Special Instructions: Please cc results to: rmillar@broadbentinc.com

Custody Seals In Place: Yes / No | Temp Blank: Yes / No | Cooler Temp on Receipt: °F/C | Trip Blank: Yes / No | MS/MSD Sample Submitted: Yes / No

27 August, 2007

Jay Johnson
Stratus Environmental Inc. [Arco]
3330 Cameron Park Dr., Suite 550
Cameron Park, CA 95682

RE: ARCO #6002, Oakland, CA
Work Order: MQH0364

Enclosed are the results of analyses for samples received by the laboratory on 08/10/07 19:40. If you have any questions concerning this report, please feel free to contact me.

Sincerely,



Lisa Race
Senior Project Manager

CA ELAP Certificate # 1210

The results in this laboratory report pertain only to the samples tested in the laboratory. The analyses contained in this report were performed in accordance with the BPGCLN Technical Specifications, applicable Federal, State, local regulations and certification requirements as well as the methodologies as described in laboratory SOPs reviewed by the BPGCLN. This entire report was reviewed and approved for release.

Stratus Environmental Inc. [Arco] 3330 Cameron Park Dr., Suite 550 Cameron Park CA, 95682	Project: ARCO #6002, Oakland, CA Project Number: G0C8K-0015 Project Manager: Jay Johnson	MQH0364 Reported: 08/27/07 16:16
---	--	--

ANALYTICAL REPORT FOR SAMPLES

Sample ID	Laboratory ID	Matrix	Date Sampled	Date Received
MW-3	MQH0364-01	Water	08/08/07 13:55	08/10/07 19:40
MW-4	MQH0364-02	Water	08/08/07 13:06	08/10/07 19:40
MW-5	MQH0364-03	Water	08/08/07 13:20	08/10/07 19:40
MW-6	MQH0364-04	Water	08/08/07 12:55	08/10/07 19:40
VW-1	MQH0364-05	Water	08/08/07 13:41	08/10/07 19:40
VW-4	MQH0364-06	Water	08/08/07 13:31	08/10/07 19:40
TB 6002	MQH0364-07	Water	08/08/07 05:00	08/10/07 19:40

The carbon range for the TPH-GRO has been changed from C6-C10 to C4-C12. The carbon range for TPH-DRO has been changed from C10-C28 to C10-C36. EPA 8015B has been modified to better meet the requirements of California regulatory agencies.

These samples were received with no custody seals.

Stratus Environmental Inc. [Arco]
3330 Cameron Park Dr., Suite 550
Cameron Park CA, 95682

Project: ARCO #6002, Oakland, CA
Project Number: G0C8K-0015
Project Manager: Jay Johnson

MQH0364
Reported:
08/27/07 16:16

Total Purgeable Hydrocarbons by GC/MS (CA LUFT)
TestAmerica - Morgan Hill, CA

Analyte	Result	Reporting Limit	Units	Dilution	Batch	Prepared	Analyzed	Method	Notes
MW-3 (MQH0364-01) Water Sampled: 08/08/07 13:55 Received: 08/10/07 19:40									
Gasoline Range Organics (C4-C12)	ND	50	ug/l	1	7H15030	08/15/07	08/16/07	LUFT GCMS	
Surrogate: 1,2-Dichloroethane-d4		102 %	60-125		"	"	"	"	
Surrogate: Dibromofluoromethane		97 %	75-120		"	"	"	"	
Surrogate: Toluene-d8		96 %	80-120		"	"	"	"	
Surrogate: 4-Bromofluorobenzene		90 %	60-135		"	"	"	"	
MW-4 (MQH0364-02) Water Sampled: 08/08/07 13:06 Received: 08/10/07 19:40									
Gasoline Range Organics (C4-C12)	ND	50	ug/l	1	7H15030	08/15/07	08/16/07	LUFT GCMS	
Surrogate: 1,2-Dichloroethane-d4		101 %	60-125		"	"	"	"	
Surrogate: Dibromofluoromethane		97 %	75-120		"	"	"	"	
Surrogate: Toluene-d8		96 %	80-120		"	"	"	"	
Surrogate: 4-Bromofluorobenzene		92 %	60-135		"	"	"	"	
MW-5 (MQH0364-03) Water Sampled: 08/08/07 13:20 Received: 08/10/07 19:40									
Gasoline Range Organics (C4-C12)	4100	100	ug/l	2	7H15030	08/15/07	08/16/07	LUFT GCMS	
Surrogate: 1,2-Dichloroethane-d4		98 %	60-125		"	"	"	"	
Surrogate: Dibromofluoromethane		93 %	75-120		"	"	"	"	
Surrogate: Toluene-d8		100 %	80-120		"	"	"	"	
Surrogate: 4-Bromofluorobenzene		97 %	60-135		"	"	"	"	
MW-6 (MQH0364-04) Water Sampled: 08/08/07 12:55 Received: 08/10/07 19:40									
Gasoline Range Organics (C4-C12)	ND	50	ug/l	1	7H15030	08/15/07	08/16/07	LUFT GCMS	
Surrogate: 1,2-Dichloroethane-d4		102 %	60-125		"	"	"	"	
Surrogate: Dibromofluoromethane		96 %	75-120		"	"	"	"	
Surrogate: Toluene-d8		100 %	80-120		"	"	"	"	
Surrogate: 4-Bromofluorobenzene		92 %	60-135		"	"	"	"	

Stratus Environmental Inc. [Arco] 3330 Cameron Park Dr., Suite 550 Cameron Park CA, 95682	Project: ARCO #6002, Oakland, CA Project Number: G0C8K-0015 Project Manager: Jay Johnson	MQH0364 Reported: 08/27/07 16:16
---	--	--

Total Purgeable Hydrocarbons by GC/MS (CA LUFT)
TestAmerica - Morgan Hill, CA

Analyte	Result	Reporting Limit	Units	Dilution	Batch	Prepared	Analyzed	Method	Notes
---------	--------	-----------------	-------	----------	-------	----------	----------	--------	-------

VW-1 (MQH0364-05) Water **Sampled: 08/08/07 13:41** **Received: 08/10/07 19:40**

Gasoline Range Organics (C4-C12)	87	50	ug/l	1	7H15030	08/15/07	08/16/07	LUFT GCMS	
<i>Surrogate: 1,2-Dichloroethane-d4</i>		100 %	60-125		"	"	"	"	
<i>Surrogate: Dibromofluoromethane</i>		94 %	75-120		"	"	"	"	
<i>Surrogate: Toluene-d8</i>		100 %	80-120		"	"	"	"	
<i>Surrogate: 4-Bromofluorobenzene</i>		99 %	60-135		"	"	"	"	

VW-4 (MQH0364-06) Water **Sampled: 08/08/07 13:31** **Received: 08/10/07 19:40**

Gasoline Range Organics (C4-C12)	140	50	ug/l	1	7H15030	08/15/07	08/16/07	LUFT GCMS	
<i>Surrogate: 1,2-Dichloroethane-d4</i>		104 %	60-125		"	"	"	"	
<i>Surrogate: Dibromofluoromethane</i>		96 %	75-120		"	"	"	"	
<i>Surrogate: Toluene-d8</i>		99 %	80-120		"	"	"	"	
<i>Surrogate: 4-Bromofluorobenzene</i>		96 %	60-135		"	"	"	"	

Stratus Environmental Inc. [Arco] 3330 Cameron Park Dr., Suite 550 Cameron Park CA, 95682	Project: ARCO #6002, Oakland, CA Project Number: G0C8K-0015 Project Manager: Jay Johnson	MQH0364 Reported: 08/27/07 16:16
---	--	--

Volatile Organic Compounds by EPA Method 8260B
TestAmerica - Morgan Hill, CA

Analyte	Result	Reporting Limit	Units	Dilution	Batch	Prepared	Analyzed	Method	Notes
---------	--------	-----------------	-------	----------	-------	----------	----------	--------	-------

MW-3 (MQH0364-01) Water **Sampled: 08/08/07 13:55** **Received: 08/10/07 19:40**

tert-Amyl methyl ether	ND	0.50	ug/l	1	7H15030	08/15/07	08/16/07	EPA 8260B	
Benzene	ND	0.50	"	"	"	"	"	"	
tert-Butyl alcohol	ND	20	"	"	"	"	"	"	
Di-isopropyl ether	ND	0.50	"	"	"	"	"	"	
1,2-Dibromoethane (EDB)	ND	0.50	"	"	"	"	"	"	
1,2-Dichloroethane	ND	0.50	"	"	"	"	"	"	
Ethanol	ND	300	"	"	"	"	"	"	
Ethyl tert-butyl ether	ND	0.50	"	"	"	"	"	"	
Ethylbenzene	ND	0.50	"	"	"	"	"	"	
Methyl tert-butyl ether	ND	0.50	"	"	"	"	"	"	
Toluene	ND	0.50	"	"	"	"	"	"	
Xylenes (total)	ND	0.50	"	"	"	"	"	"	
<i>Surrogate: Dibromofluoromethane</i>		97 %	75-120	"	"	"	"	"	
<i>Surrogate: 1,2-Dichloroethane-d4</i>		102 %	60-125	"	"	"	"	"	
<i>Surrogate: Toluene-d8</i>		96 %	80-120	"	"	"	"	"	
<i>Surrogate: 4-Bromofluorobenzene</i>		90 %	60-135	"	"	"	"	"	

MW-4 (MQH0364-02) Water **Sampled: 08/08/07 13:06** **Received: 08/10/07 19:40**

tert-Amyl methyl ether	ND	0.50	ug/l	1	7H15030	08/15/07	08/16/07	EPA 8260B	
Benzene	ND	0.50	"	"	"	"	"	"	
tert-Butyl alcohol	ND	20	"	"	"	"	"	"	
Di-isopropyl ether	ND	0.50	"	"	"	"	"	"	
1,2-Dibromoethane (EDB)	ND	0.50	"	"	"	"	"	"	
1,2-Dichloroethane	ND	0.50	"	"	"	"	"	"	
Ethanol	ND	300	"	"	"	"	"	"	
Ethyl tert-butyl ether	ND	0.50	"	"	"	"	"	"	
Ethylbenzene	ND	0.50	"	"	"	"	"	"	
Methyl tert-butyl ether	ND	0.50	"	"	"	"	"	"	
Toluene	ND	0.50	"	"	"	"	"	"	
Xylenes (total)	ND	0.50	"	"	"	"	"	"	
<i>Surrogate: Dibromofluoromethane</i>		97 %	75-120	"	"	"	"	"	
<i>Surrogate: 1,2-Dichloroethane-d4</i>		101 %	60-125	"	"	"	"	"	
<i>Surrogate: Toluene-d8</i>		96 %	80-120	"	"	"	"	"	
<i>Surrogate: 4-Bromofluorobenzene</i>		92 %	60-135	"	"	"	"	"	

Stratus Environmental Inc. [Arco]
3330 Cameron Park Dr., Suite 550
Cameron Park CA, 95682

Project: ARCO #6002, Oakland, CA
Project Number: G0C8K-0015
Project Manager: Jay Johnson

MQH0364
Reported:
08/27/07 16:16

Volatile Organic Compounds by EPA Method 8260B
TestAmerica - Morgan Hill, CA

Analyte	Result	Reporting Limit	Units	Dilution	Batch	Prepared	Analyzed	Method	Notes
---------	--------	-----------------	-------	----------	-------	----------	----------	--------	-------

MW-5 (MQH0364-03) Water Sampled: 08/08/07 13:20 Received: 08/10/07 19:40

tert-Amyl methyl ether	ND	1.0	ug/l	2	7H15030	08/15/07	08/16/07	EPA 8260B	
Benzene	ND	1.0	"	"	"	"	"	"	
tert-Butyl alcohol	ND	40	"	"	"	"	"	"	
Di-isopropyl ether	ND	1.0	"	"	"	"	"	"	
1,2-Dibromoethane (EDB)	ND	1.0	"	"	"	"	"	"	
1,2-Dichloroethane	ND	1.0	"	"	"	"	"	"	
Ethanol	ND	600	"	"	"	"	"	"	
Ethyl tert-butyl ether	ND	1.0	"	"	"	"	"	"	
Ethylbenzene	4.1	1.0	"	"	"	"	"	"	
Methyl tert-butyl ether	11	1.0	"	"	"	"	"	"	
Toluene	ND	1.0	"	"	"	"	"	"	
Xylenes (total)	1.3	1.0	"	"	"	"	"	"	

<i>Surrogate: Dibromofluoromethane</i>		93 %		75-120	"	"	"	"	
<i>Surrogate: 1,2-Dichloroethane-d4</i>		98 %		60-125	"	"	"	"	
<i>Surrogate: Toluene-d8</i>		100 %		80-120	"	"	"	"	
<i>Surrogate: 4-Bromofluorobenzene</i>		97 %		60-135	"	"	"	"	

MW-6 (MQH0364-04) Water Sampled: 08/08/07 12:55 Received: 08/10/07 19:40

tert-Amyl methyl ether	ND	0.50	ug/l	1	7H15030	08/15/07	08/16/07	EPA 8260B	
Benzene	ND	0.50	"	"	"	"	"	"	
tert-Butyl alcohol	ND	20	"	"	"	"	"	"	
Di-isopropyl ether	ND	0.50	"	"	"	"	"	"	
1,2-Dibromoethane (EDB)	ND	0.50	"	"	"	"	"	"	
1,2-Dichloroethane	ND	0.50	"	"	"	"	"	"	
Ethanol	ND	300	"	"	"	"	"	"	
Ethyl tert-butyl ether	ND	0.50	"	"	"	"	"	"	
Ethylbenzene	ND	0.50	"	"	"	"	"	"	
Methyl tert-butyl ether	ND	0.50	"	"	"	"	"	"	
Toluene	ND	0.50	"	"	"	"	"	"	
Xylenes (total)	ND	0.50	"	"	"	"	"	"	

<i>Surrogate: Dibromofluoromethane</i>		96 %		75-120	"	"	"	"	
<i>Surrogate: 1,2-Dichloroethane-d4</i>		102 %		60-125	"	"	"	"	
<i>Surrogate: Toluene-d8</i>		100 %		80-120	"	"	"	"	
<i>Surrogate: 4-Bromofluorobenzene</i>		92 %		60-135	"	"	"	"	

Stratus Environmental Inc. [Arco]
3330 Cameron Park Dr., Suite 550
Cameron Park CA, 95682

Project: ARCO #6002, Oakland, CA
Project Number: G0C8K-0015
Project Manager: Jay Johnson

MQH0364
Reported:
08/27/07 16:16

Volatile Organic Compounds by EPA Method 8260B
TestAmerica - Morgan Hill, CA

Analyte	Result	Reporting Limit	Units	Dilution	Batch	Prepared	Analyzed	Method	Notes
---------	--------	-----------------	-------	----------	-------	----------	----------	--------	-------

VW-1 (MQH0364-05) Water Sampled: 08/08/07 13:41 Received: 08/10/07 19:40

tert-Amyl methyl ether	ND	0.50	ug/l	1	7H15030	08/15/07	08/16/07	EPA 8260B	
Benzene	ND	0.50	"	"	"	"	"	"	
tert-Butyl alcohol	ND	20	"	"	"	"	"	"	
Di-isopropyl ether	ND	0.50	"	"	"	"	"	"	
1,2-Dibromoethane (EDB)	ND	0.50	"	"	"	"	"	"	
1,2-Dichloroethane	ND	0.50	"	"	"	"	"	"	
Ethanol	ND	300	"	"	"	"	"	"	
Ethyl tert-butyl ether	ND	0.50	"	"	"	"	"	"	
Ethylbenzene	ND	0.50	"	"	"	"	"	"	
Methyl tert-butyl ether	1.9	0.50	"	"	"	"	"	"	
Toluene	ND	0.50	"	"	"	"	"	"	
Xylenes (total)	ND	0.50	"	"	"	"	"	"	

<i>Surrogate: Dibromofluoromethane</i>		94 %		75-120	"	"	"	"	
<i>Surrogate: 1,2-Dichloroethane-d4</i>		100 %		60-125	"	"	"	"	
<i>Surrogate: Toluene-d8</i>		100 %		80-120	"	"	"	"	
<i>Surrogate: 4-Bromofluorobenzene</i>		99 %		60-135	"	"	"	"	

VW-4 (MQH0364-06) Water Sampled: 08/08/07 13:31 Received: 08/10/07 19:40

tert-Amyl methyl ether	ND	0.50	ug/l	1	7H15030	08/15/07	08/16/07	EPA 8260B	
Benzene	ND	0.50	"	"	"	"	"	"	
tert-Butyl alcohol	1300	20	"	"	"	"	"	"	
Di-isopropyl ether	ND	0.50	"	"	"	"	"	"	
1,2-Dibromoethane (EDB)	ND	0.50	"	"	"	"	"	"	
1,2-Dichloroethane	ND	0.50	"	"	"	"	"	"	
Ethanol	ND	300	"	"	"	"	"	"	
Ethyl tert-butyl ether	1.2	0.50	"	"	"	"	"	"	
Ethylbenzene	ND	0.50	"	"	"	"	"	"	
Methyl tert-butyl ether	5.4	0.50	"	"	"	"	"	"	
Toluene	ND	0.50	"	"	"	"	"	"	
Xylenes (total)	ND	0.50	"	"	"	"	"	"	

<i>Surrogate: Dibromofluoromethane</i>		96 %		75-120	"	"	"	"	
<i>Surrogate: 1,2-Dichloroethane-d4</i>		104 %		60-125	"	"	"	"	
<i>Surrogate: Toluene-d8</i>		99 %		80-120	"	"	"	"	
<i>Surrogate: 4-Bromofluorobenzene</i>		96 %		60-135	"	"	"	"	

Stratus Environmental Inc. [Arco]
3330 Cameron Park Dr., Suite 550
Cameron Park CA, 95682

Project: ARCO #6002, Oakland, CA
Project Number: G0C8K-0015
Project Manager: Jay Johnson

MQH0364
Reported:
08/27/07 16:16

Total Purgeable Hydrocarbons by GC/MS (CA LUFT) - Quality Control
TestAmerica - Morgan Hill, CA

Analyte	Result	Reporting Limit	Units	Spike Level	Source Result	%REC	%REC Limits	RPD	RPD Limit	Notes
---------	--------	-----------------	-------	-------------	---------------	------	-------------	-----	-----------	-------

Batch 7H15030 - EPA 5030B P/T / LUFT GCMS

Blank (7H15030-BLK1)

Prepared & Analyzed: 08/15/07

Gasoline Range Organics (C4-C12)	ND	50	ug/l							
Surrogate: 1,2-Dichloroethane-d4	2.46		"	2.50		98	60-125			
Surrogate: Dibromofluoromethane	2.39		"	2.50		96	75-120			
Surrogate: Toluene-d8	2.40		"	2.50		96	80-120			
Surrogate: 4-Bromofluorobenzene	2.30		"	2.50		92	60-135			

Laboratory Control Sample (7H15030-BS2)

Prepared & Analyzed: 08/15/07

Gasoline Range Organics (C4-C12)	424	50	ug/l	500		85	65-120			
Surrogate: 1,2-Dichloroethane-d4	2.39		"	2.50		96	60-125			
Surrogate: Dibromofluoromethane	2.33		"	2.50		93	75-120			
Surrogate: Toluene-d8	2.48		"	2.50		99	80-120			
Surrogate: 4-Bromofluorobenzene	2.49		"	2.50		100	60-135			

Laboratory Control Sample Dup (7H15030-BSD2)

Prepared & Analyzed: 08/15/07

Gasoline Range Organics (C4-C12)	462	50	ug/l	500		92	65-120	8	20	
Surrogate: 1,2-Dichloroethane-d4	2.42		"	2.50		97	60-125			
Surrogate: Dibromofluoromethane	2.34		"	2.50		94	75-120			
Surrogate: Toluene-d8	2.50		"	2.50		100	80-120			
Surrogate: 4-Bromofluorobenzene	2.50		"	2.50		100	60-135			

Stratus Environmental Inc. [Arco] 3330 Cameron Park Dr., Suite 550 Cameron Park CA, 95682	Project: ARCO #6002, Oakland, CA Project Number: G0C8K-0015 Project Manager: Jay Johnson	MQH0364 Reported: 08/27/07 16:16
---	--	--

Volatile Organic Compounds by EPA Method 8260B - Quality Control
TestAmerica - Morgan Hill, CA

Analyte	Result	Reporting Limit	Units	Spike Level	Source Result	%REC	%REC Limits	RPD	RPD Limit	Notes
---------	--------	-----------------	-------	-------------	---------------	------	-------------	-----	-----------	-------

Batch 7H15030 - EPA 5030B P/T / EPA 8260B

Blank (7H15030-BLK1)				Prepared & Analyzed: 08/15/07						
tert-Amyl methyl ether	ND	0.50	ug/l							
Benzene	ND	0.50	"							
tert-Butyl alcohol	ND	20	"							
Di-isopropyl ether	ND	0.50	"							
1,2-Dibromoethane (EDB)	ND	0.50	"							
1,2-Dichloroethane	ND	0.50	"							
Ethanol	ND	300	"							
Ethyl tert-butyl ether	ND	0.50	"							
Ethylbenzene	ND	0.50	"							
Methyl tert-butyl ether	ND	0.50	"							
Toluene	ND	0.50	"							
Xylenes (total)	ND	0.50	"							
<i>Surrogate: Dibromofluoromethane</i>	2.39		"	2.50		96	75-120			
<i>Surrogate: 1,2-Dichloroethane-d4</i>	2.46		"	2.50		98	60-125			
<i>Surrogate: Toluene-d8</i>	2.40		"	2.50		96	80-120			
<i>Surrogate: 4-Bromofluorobenzene</i>	2.30		"	2.50		92	60-135			

Laboratory Control Sample (7H15030-BS1)				Prepared & Analyzed: 08/15/07						
tert-Amyl methyl ether	11.4	0.50	ug/l	10.0		114	65-135			
Benzene	10.1	0.50	"	10.0		101	75-120			
tert-Butyl alcohol	192	20	"	200		96	60-135			
Di-isopropyl ether	10.5	0.50	"	10.0		105	70-130			
1,2-Dibromoethane (EDB)	10.6	0.50	"	10.0		106	70-135			
1,2-Dichloroethane	10.1	0.50	"	10.0		101	70-125			
Ethanol	214	300	"	200		107	15-150			
Ethyl tert-butyl ether	10.9	0.50	"	10.0		109	65-130			
Ethylbenzene	10.1	0.50	"	10.0		101	75-120			
Methyl tert-butyl ether	11.2	0.50	"	10.0		112	50-140			
Toluene	10.1	0.50	"	10.0		101	75-120			
Xylenes (total)	30.7	0.50	"	30.0		102	75-130			
<i>Surrogate: Dibromofluoromethane</i>	2.43		"	2.50		97	75-120			
<i>Surrogate: 1,2-Dichloroethane-d4</i>	2.49		"	2.50		100	60-125			
<i>Surrogate: Toluene-d8</i>	2.48		"	2.50		99	80-120			
<i>Surrogate: 4-Bromofluorobenzene</i>	2.38		"	2.50		95	60-135			

Stratus Environmental Inc. [Arco] 3330 Cameron Park Dr., Suite 550 Cameron Park CA, 95682	Project: ARCO #6002, Oakland, CA Project Number: G0C8K-0015 Project Manager: Jay Johnson	MQH0364 Reported: 08/27/07 16:16
---	--	--

Volatile Organic Compounds by EPA Method 8260B - Quality Control
TestAmerica - Morgan Hill, CA

Analyte	Result	Reporting Limit	Units	Spike Level	Source Result	%REC	%REC Limits	RPD	RPD Limit	Notes
---------	--------	-----------------	-------	-------------	---------------	------	-------------	-----	-----------	-------

Batch 7H15030 - EPA 5030B P/T / EPA 8260B

Matrix Spike (7H15030-MS1)	Source: MQH0364-02	Prepared: 08/15/07	Analyzed: 08/16/07						
tert-Amyl methyl ether	10.5	0.50	ug/l	10.0	ND	105	65-135		
Benzene	10.8	0.50	"	10.0	ND	108	75-120		
tert-Butyl alcohol	204	20	"	200	ND	102	60-135		
Di-isopropyl ether	11.2	0.50	"	10.0	ND	112	70-130		
1,2-Dibromoethane (EDB)	11.4	0.50	"	10.0	ND	114	70-135		
1,2-Dichloroethane	10.9	0.50	"	10.0	ND	109	70-125		
Ethanol	210	300	"	200	ND	105	15-150		
Ethyl tert-butyl ether	10.8	0.50	"	10.0	ND	108	65-130		
Ethylbenzene	10.3	0.50	"	10.0	ND	103	75-120		
Methyl tert-butyl ether	10.6	0.50	"	10.0	ND	106	50-140		
Toluene	10.5	0.50	"	10.0	ND	105	75-120		
Xylenes (total)	29.9	0.50	"	30.0	ND	100	75-130		
<i>Surrogate: Dibromofluoromethane</i>	2.46		"	2.50		98	75-120		
<i>Surrogate: 1,2-Dichloroethane-d4</i>	2.49		"	2.50		100	60-125		
<i>Surrogate: Toluene-d8</i>	2.41		"	2.50		96	80-120		
<i>Surrogate: 4-Bromofluorobenzene</i>	2.32		"	2.50		93	60-135		

Matrix Spike Dup (7H15030-MSD1)	Source: MQH0364-02	Prepared: 08/15/07	Analyzed: 08/16/07						
tert-Amyl methyl ether	10.9	0.50	ug/l	10.0	ND	109	65-135	4	25
Benzene	10.7	0.50	"	10.0	ND	107	75-120	0.7	20
tert-Butyl alcohol	200	20	"	200	ND	100	60-135	2	25
Di-isopropyl ether	11.3	0.50	"	10.0	ND	113	70-130	0.7	25
1,2-Dibromoethane (EDB)	11.7	0.50	"	10.0	ND	117	70-135	3	30
1,2-Dichloroethane	10.9	0.50	"	10.0	ND	109	70-125	0.6	25
Ethanol	183	300	"	200	ND	91	15-150	14	25
Ethyl tert-butyl ether	11.3	0.50	"	10.0	ND	113	65-130	5	25
Ethylbenzene	10.3	0.50	"	10.0	ND	103	75-120	0.3	20
Methyl tert-butyl ether	11.5	0.50	"	10.0	ND	115	50-140	8	25
Toluene	10.5	0.50	"	10.0	ND	105	75-120	0.3	25
Xylenes (total)	30.6	0.50	"	30.0	ND	102	75-130	2	20
<i>Surrogate: Dibromofluoromethane</i>	2.52		"	2.50		101	75-120		
<i>Surrogate: 1,2-Dichloroethane-d4</i>	2.56		"	2.50		102	60-125		
<i>Surrogate: Toluene-d8</i>	2.43		"	2.50		97	80-120		
<i>Surrogate: 4-Bromofluorobenzene</i>	2.31		"	2.50		92	60-135		

Stratus Environmental Inc. [Arco] 3330 Cameron Park Dr., Suite 550 Cameron Park CA, 95682	Project: ARCO #6002, Oakland, CA Project Number: G0C8K-0015 Project Manager: Jay Johnson	MQH0364 Reported: 08/27/07 16:16
---	--	---

Notes and Definitions

- DET Analyte DETECTED
- ND Analyte NOT DETECTED at or above the reporting limit or MDL, if MDL is specified
- NR Not Reported
- dry Sample results reported on a dry weight basis
- RPD Relative Percent Difference



Chain of Custody Record

Project Name: BP 6002
 BP BU/AR Region/Enfos Segment: BP > Americas > West > Retail > CA > Alameda > 6002
 State or Lead Regulatory Agency: _____
 Requested Due Date (mm/dd/yy): _____

On-site Time: <u>11:50</u>	Temp: <u>70</u>
Off-site Time: <u>14:20</u>	Temp: <u>75</u>
Sky Conditions: <u>clear</u>	
Meteorological Events: <u>NONE</u>	
Wind Speed: <u>0</u>	Direction: <u>0</u>

Lab Name: <u>TestAmerica</u>	BP/AR Facility No.: <u>6002</u>	Consultant/Contractor: <u>Stratus Environmental, Inc.</u>
Address: <u>885 Jarvis Drive</u>	BP/AR Facility Address: <u>6235 Seminary Avenue, Oakland</u>	Address: <u>3330 Cameron Park Drive, Suite 550</u>
<u>Morgan Hill, CA 95937</u>	Site Lat/Long:	<u>Cameron Park, CA 95682</u>
Lab PM: <u>Lisa Race</u>	California Global ID #: <u>T0600100105</u>	Consultant/Contractor Project No.: <u>E6002-04</u>
Tele/Fax: <u>408-782-8156 408-782-6308 (fax)</u>	Enfos Project No.: <u>G0C8K-0015</u>	Consultant/Contractor PM: <u>Jay Johnson</u>
BP/AR PM Contact: <u>Paul Supple</u>	Provision or RCOP (circle one) <u>Provision</u>	Tele/Fax: <u>(530) 676-6000 / (530) 676-6005</u>
Address: <u>2010 Crow Canyon Place, Suite 150</u>	Phase/WBS: <u>04-Monitoring</u>	Report Type & QC Level: <u>Level 1 with EDF</u>
<u>San Ramon, CA</u>	Sub Phase/Task: <u>03-Analytical</u>	E-mail EDD To: <u>shayes@stratusinc.net</u>
Tele/Fax: <u>925-275-3506</u>	Cost Element: <u>01-Contractor labor</u>	Invoice to: <u>Atlantic Richfield Co.</u>

Item No.	Sample Description	Time	Date	Matrix			Laboratory No.	No. of Containers	Preservative					Requested Analysis				Sample Point Lat/Long and Comments *Oxy = MTBD, TAME, ETBE, DIPE, TBA	
				Soil/Solid	Water/Liquid	Air			Unpreserved	H ₂ SO ₄	HNO ₃	HCl	Methanol	GRO/BTEX/Oxy*	1,2 DCA	EDB	Ethanol by 8260		
1	MW-3	1355	8-8-07	X			01	3			X				X	X	X	X	
2	MW-4	1306		X			02	6			X				X	X	X	X	
3	MW-5	1320		X			03	3			X				X	X	X	X	
4	MW-6	1255		X			04	3			X				X	X	X	X	
5	MW-7			X							X				X	X	X	X	
6	MW-8			X							X				X	X	X	X	
7	VW-1	1341		X			05	3			X				X	X	X	X	
8	VW-4	1331		X			06	3			X				X	X	X	X	
9	TB 6002	5:00		X			07	2			X				X	X	X	X	
10																			HOLD

Sampler's Name:	Relinquished By / Affiliation	Date	Time	Accepted By / Affiliation	Date	Time
<u>Jerry Gonzalez</u>	<u>[Signature]</u>	<u>8/10/07</u>	<u>1500</u>	<u>[Signature]</u>	<u>8/10/07</u>	<u>1500</u>
<u>Doallo's ENV</u>	<u>[Signature]</u>	<u>8-10-07</u>	<u>1650</u>	<u>[Signature]</u>	<u>8/10</u>	<u>1650</u>
Shipment Date:	<u>[Signature]</u>	<u>8/10/07</u>	<u>1940</u>	<u>[Signature]</u>	<u>8/10</u>	<u>1940</u>
Shipment Method:	<u>[Signature]</u>					
Shipment Tracking No:						

Special Instructions: Please cc results to: rmiller@broadbentinc.com

Custody Seals In Place: Yes / No | Temp Blank: Yes / No | Cooler Temp on Receipt: °F/C | Trip Blank: Yes / No | MS/MSD Sample Submitted: Yes / No

TEST AMERICA SAMPLE RECEIPT LOG

CLIENT NAME: BP 6202
REC. BY (PRINT): D.V.
WORKORDER: MO40364

DATE REC'D AT LAB: 8/15/07
TIME REC'D AT LAB: 1940
DATE LOGGED IN: 8/11/07

For Regulatory Purposes?
DRINKING WATER YES / NO
WASTE WATER YES / NO

CIRCLE THE APPROPRIATE RESPONSE	LAB SAMPLE #	CLIENT ID	CONTAINER DESCRIPTION	PRESERVATIVE	pH	SAMPLE MATRIX	DATE SAMPLED	REMARKS: CONDITION (ETC.)
1. Custody Seal(s) Present / <input checked="" type="radio"/> Absent Intact / Broken*								/
2. Chain-of-Custody Present / <input checked="" type="radio"/> Absent*								
3. Traffic Reports or Packing List: Present / <input checked="" type="radio"/> Absent								
4. Airbill: Airbill / Sticker Present / <input checked="" type="radio"/> Absent								
5. Airbill #:								
6. Sample Labels: <input checked="" type="radio"/> Present / Absent								
7. Sample IDs: <input checked="" type="radio"/> Listed / Not Listed on Chain-of-Custody								
8. Sample Condition: <input checked="" type="radio"/> Intact / Broken* / Leaking*			see C.O.C 8/10/07 D.V.					
9. Does information on chain-of-custody, traffic reports and sample labels agree? <input checked="" type="radio"/> Yes / No*								
10. Sample received within hold time? <input checked="" type="radio"/> Yes / No*								
11. Adequate sample volume received? <input checked="" type="radio"/> Yes / No*								
12. Proper preservatives used? <input checked="" type="radio"/> Yes / No*								
13. Trip Blank / Temp Blank Received? (circle which, if yes) <input checked="" type="radio"/> Yes / No*								
14. Read Temp: <u>2-8°</u> Corrected Temp: <u>↓</u> Is corrected temp 4 +/- 2°C? <input checked="" type="radio"/> Yes / No**								

(Acceptance range for samples requiring thermal pres.)
 **Exception (if any): METALS / DFF ON ICE or Problem COC

*IF CIRCLED, CONTACT PROJECT MANAGER AND ATTACH RECORD OF RESOLUTION.

APPENDIX B

GEOTRACKER UPLOAD CONFIRMATION

Electronic Submittal Information

[Main Menu](#) | [View/Add Facilities](#) | [Upload EDD](#) | [Check EDD](#)

UPLOADING A GEO_WELL FILE

Processing is complete. No errors were found!
Your file has been successfully submitted!

<u>Submittal Title:</u>	3Q07 GEO_WELL 6002
<u>Facility Global ID:</u>	T0600100105
<u>Facility Name:</u>	ARCO #6002
<u>Submittal Date/Time:</u>	10/4/2007 9:32:34 AM
<u>Confirmation Number:</u>	1519854485

[Back to Main Menu](#)

Logged in as BROADBENT-C
(CONTRACTOR)

CONTACT SITE [ADMINISTRATOR](#).

Electronic Submittal Information

[Main Menu](#) | [View/Add Facilities](#) | [Upload EDD](#) | [Check EDD](#)

Your EDF file has been successfully uploaded!

Confirmation Number: 5890990436

Date/Time of Submittal: 10/4/2007 9:30:03 AM

Facility Global ID: T0600100105

Facility Name: ARCO #6002

Submittal Title: 3Q07 GW Monitoring

Submittal Type: GW Monitoring Report

[Click here](#) to view the detections report for this upload.

ARCO #6002
6235 SEMINARY
OAKLAND, CA 94605

Regional Board - Case #: 01-0113
SAN FRANCISCO BAY RWQCB (REGION 2)
Local Agency (lead agency) - Case #: RO0000163
ALAMEDA COUNTY LOP - (SP)

<u>CONF #</u>	<u>TITLE</u>	<u>QUARTER</u>
5890990436	3Q07 GW Monitoring	Q3 2007
<u>SUBMITTED BY</u>	<u>SUBMIT DATE</u>	<u>STATUS</u>
Broadbent & Associates, Inc.	10/4/2007	PENDING REVIEW

SAMPLE DETECTIONS REPORT

# FIELD POINTS SAMPLED	6
# FIELD POINTS WITH DETECTIONS	3
# FIELD POINTS WITH WATER SAMPLE DETECTIONS ABOVE MCL	2
SAMPLE MATRIX TYPES	WATER

METHOD QA/QC REPORT

METHODS USED	8260FA,8260TPH
TESTED FOR REQUIRED ANALYTES?	Y
LAB NOTE DATA QUALIFIERS	N

QA/QC FOR 8021/8260 SERIES SAMPLES

TECHNICAL HOLDING TIME VIOLATIONS	0
METHOD HOLDING TIME VIOLATIONS	0
LAB BLANK DETECTIONS ABOVE REPORTING DETECTION LIMIT	0
LAB BLANK DETECTIONS	0
DO ALL BATCHES WITH THE 8021/8260 SERIES INCLUDE THE FOLLOWING?	
- LAB METHOD BLANK	Y
- MATRIX SPIKE	N
- MATRIX SPIKE DUPLICATE	N
- BLANK SPIKE	Y
- SURROGATE SPIKE	Y

WATER SAMPLES FOR 8021/8260 SERIES

MATRIX SPIKE / MATRIX SPIKE DUPLICATE(S) % RECOVERY BETWEEN 65-135%	Y
MATRIX SPIKE / MATRIX SPIKE DUPLICATE(S) RPD LESS THAN 30%	Y
SURROGATE SPIKES % RECOVERY BETWEEN 85-115%	Y
BLANK SPIKE / BLANK SPIKE DUPLICATES % RECOVERY BETWEEN 70-130%	Y

SOIL SAMPLES FOR 8021/8260 SERIES

MATRIX SPIKE / MATRIX SPIKE DUPLICATE(S) % RECOVERY BETWEEN 65-135% n/a
MATRIX SPIKE / MATRIX SPIKE DUPLICATE(S) RPD LESS THAN 30% n/a
SURROGATE SPIKES % RECOVERY BETWEEN 70-125% n/a
BLANK SPIKE / BLANK SPIKE DUPLICATES % RECOVERY BETWEEN 70-130% n/a

FIELD QC SAMPLES

<u>SAMPLE</u>	<u>COLLECTED</u>	<u>DETECTIONS > REPD</u>
QCTB SAMPLES	N	0
QCEB SAMPLES	N	0
QCAB SAMPLES	N	0