

HARZA

Consulting Engineers and Scientists

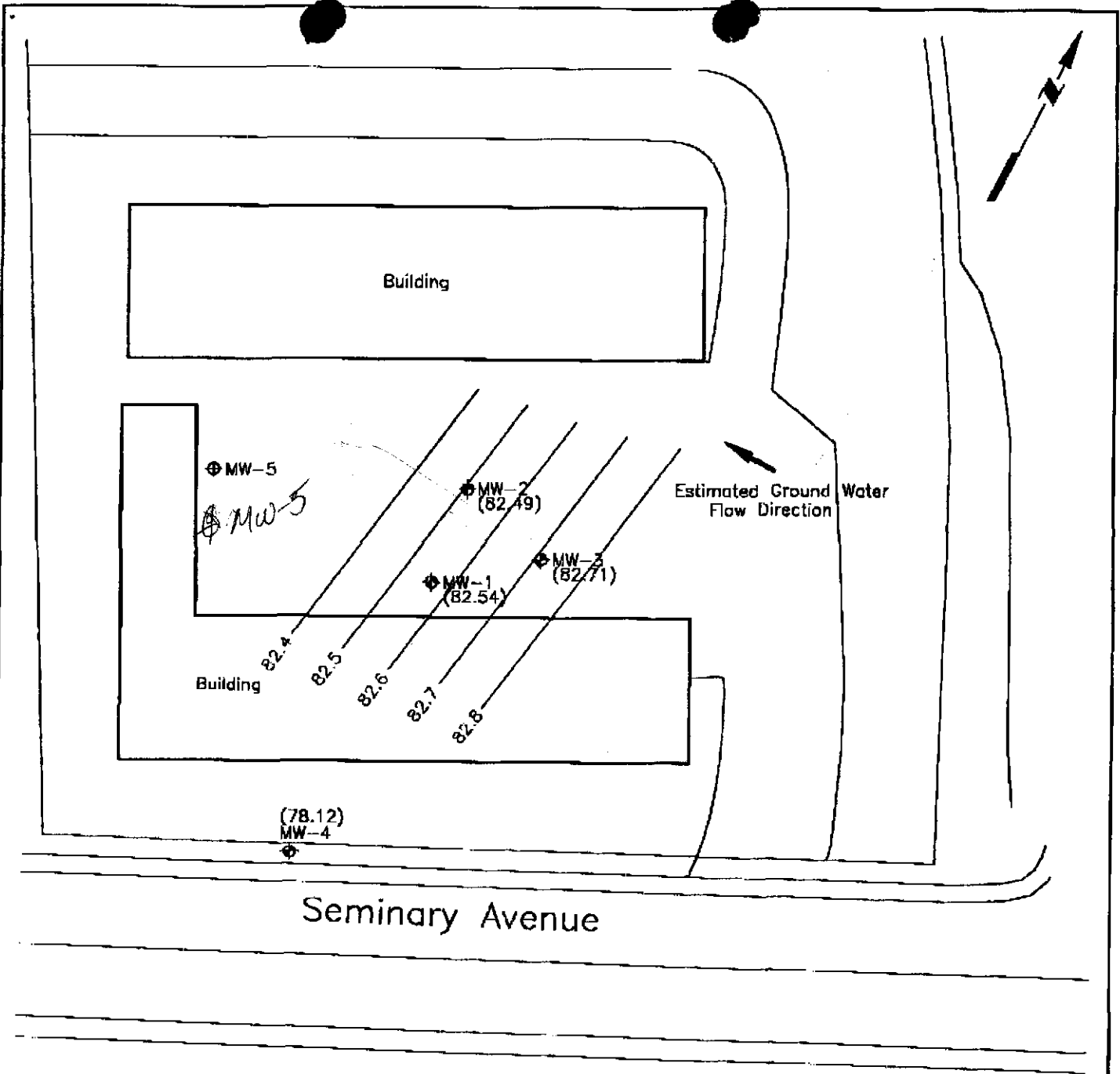
U R G E N T F A X

TO:	Madhulla Logan	FROM:	Derek Armentrout
COMPANY:	Alameda County Health Services	OPERATOR:	<i>contact if problem with transmission</i>
TEL:	(510) 567-6764	DATE/TIME:	March 14, 1995
FAX:	(510) 337-9335	PAGES:	2 <i>includes this cover</i>
RE:	Figure 2, Monitoring Well Installation Workplan		

Included is the correct map showing the proposed monitoring well location. Thank you for your assistance.

-Derek

Original to Follow: Yes No



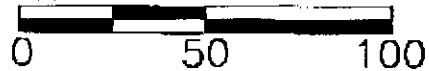
LEGEND

◆ Existing Monitoring Well Location

— 82.4 Ground Water Contour 1/18/95

⊕ Proposed Monitoring Well Location

Approximate scale in feet



ek275h2a

HARZA
Consulting Engineers and Scientists

SITE PLAN

MILLS COLLEGE
 CORPORATION YARD FACILITY
 Oakland, California

PROJECT NO.

DATE

FIGURE NO.

K275-H

March 1995

2