

**BLOCK 2024**

**MAP NO 2 OF THE WHITCHEK TRACT**

Filed May 3, 1870. Map Book 2, Page 67. Alameda County Records.



28TH ST

F GENERAL BUSINESS ZONE

LIGHT INDUSTRIAL ZONE



27TH ST

VICINITY MAP  
Scale 1" = 100'

25'

LOT 37

FRAME GARAGE

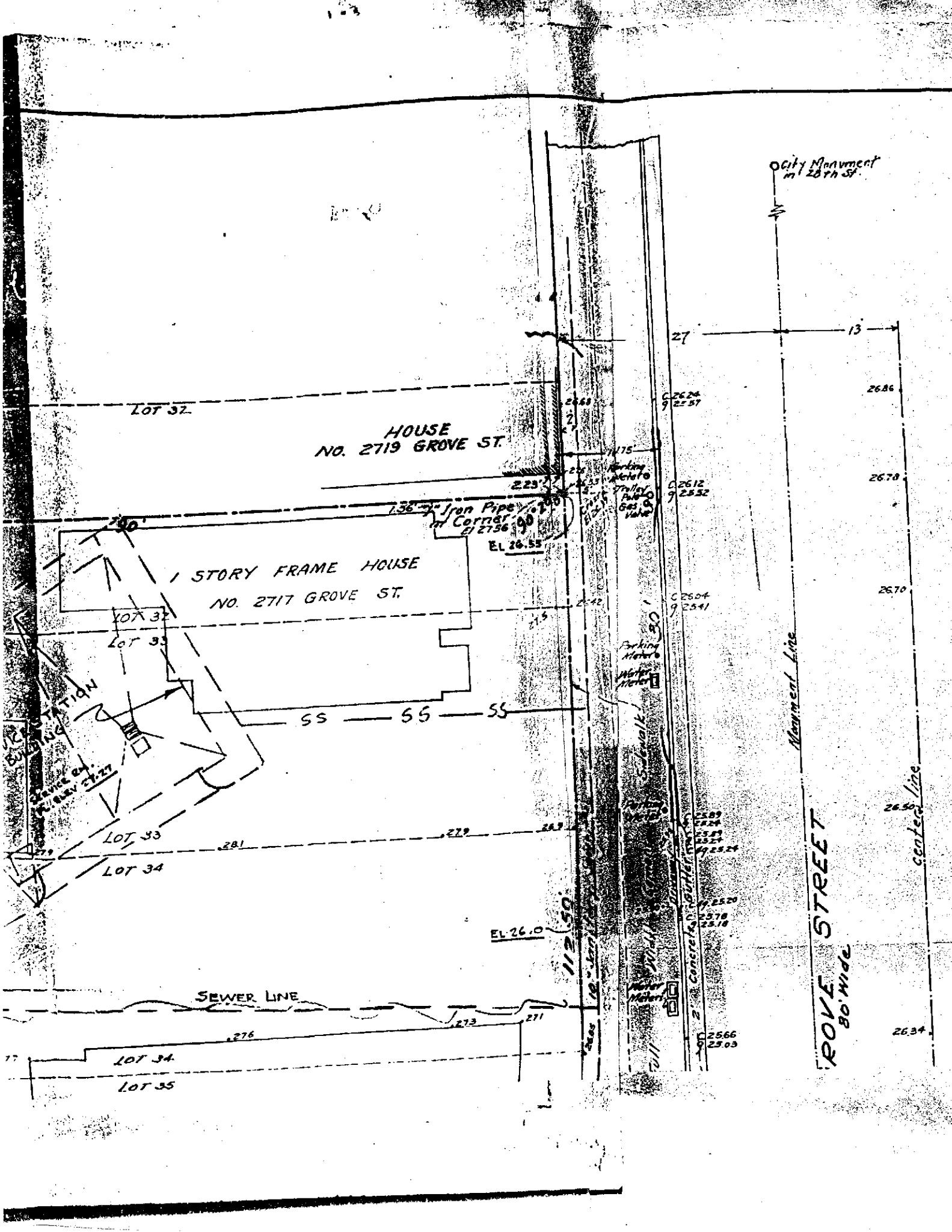
2 STORY FR HOUSE  
NO 2715 GROVE

FRAME GARAGE

State  
El. 26.81

26.8

100'



HOUSE  
NO. 2719 GROVE ST.

1 STORY FRAME HOUSE  
NO. 2717 GROVE ST.

LOT 32

LOT 32

LOT 33

LOT 33

LOT 34

LOT 34

LOT 35

SEWER LINE

City Monument  
at 20th St.

1.36" Iron Pipe  
at Corner  
El 27.36

El 26.55

El 26.0

27

13

C 2624  
9 22.57

26.86

C 2612  
9 25.32

26.78

C 2504  
9 25.41

26.70

Parking  
Meters  
Water  
Meters

Manneal Line

Parking  
Meters

C 2589  
9 25.24  
C 2524  
9 25.24  
C 2524  
9 25.24

26.50

center line

C 2520  
9 25.78  
C 2518  
9 25.18

GROVE STREET  
80' Wide

26.34

C 2566  
9 25.03

112.50

10' 1/2" 127'

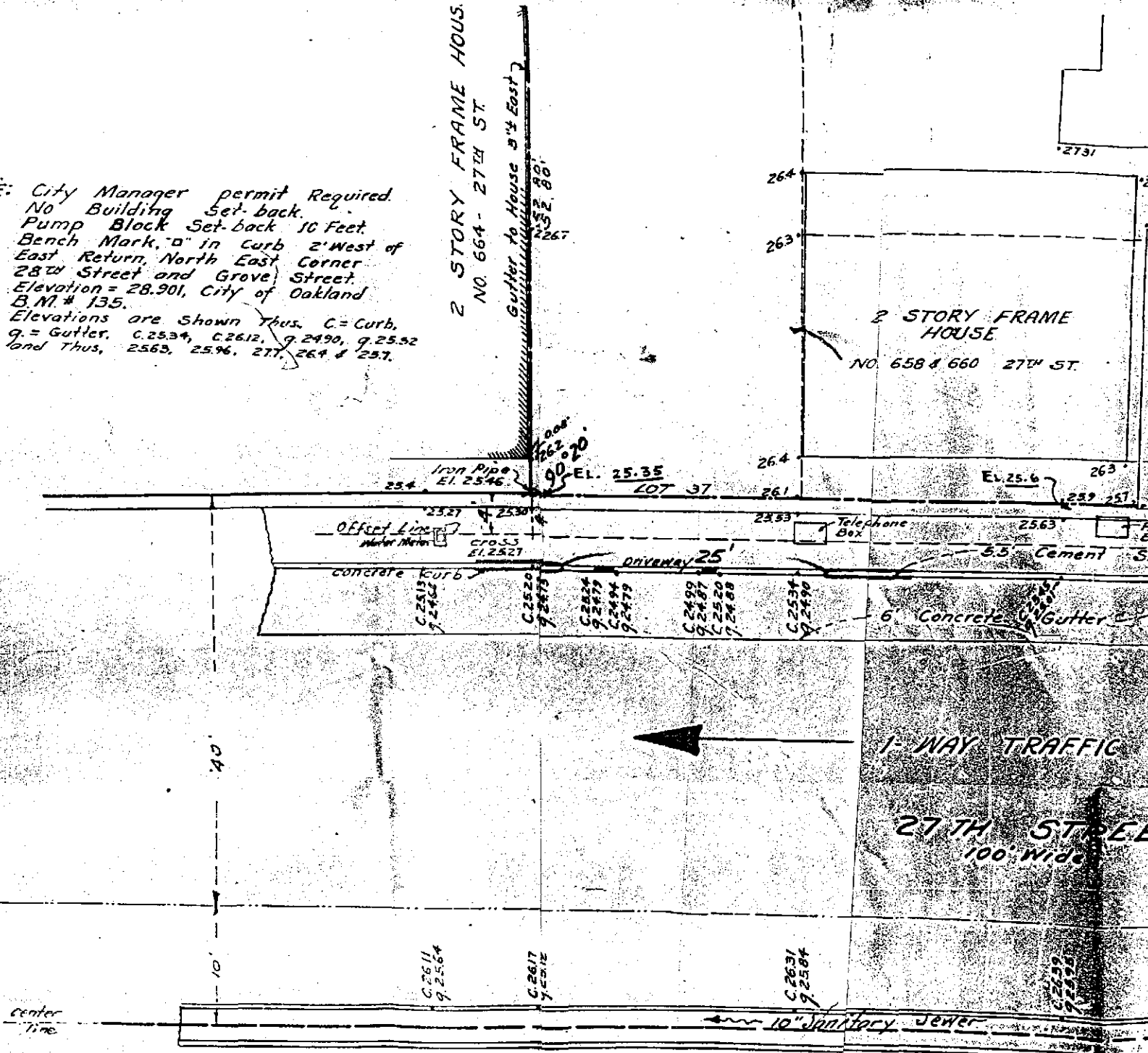
7/11

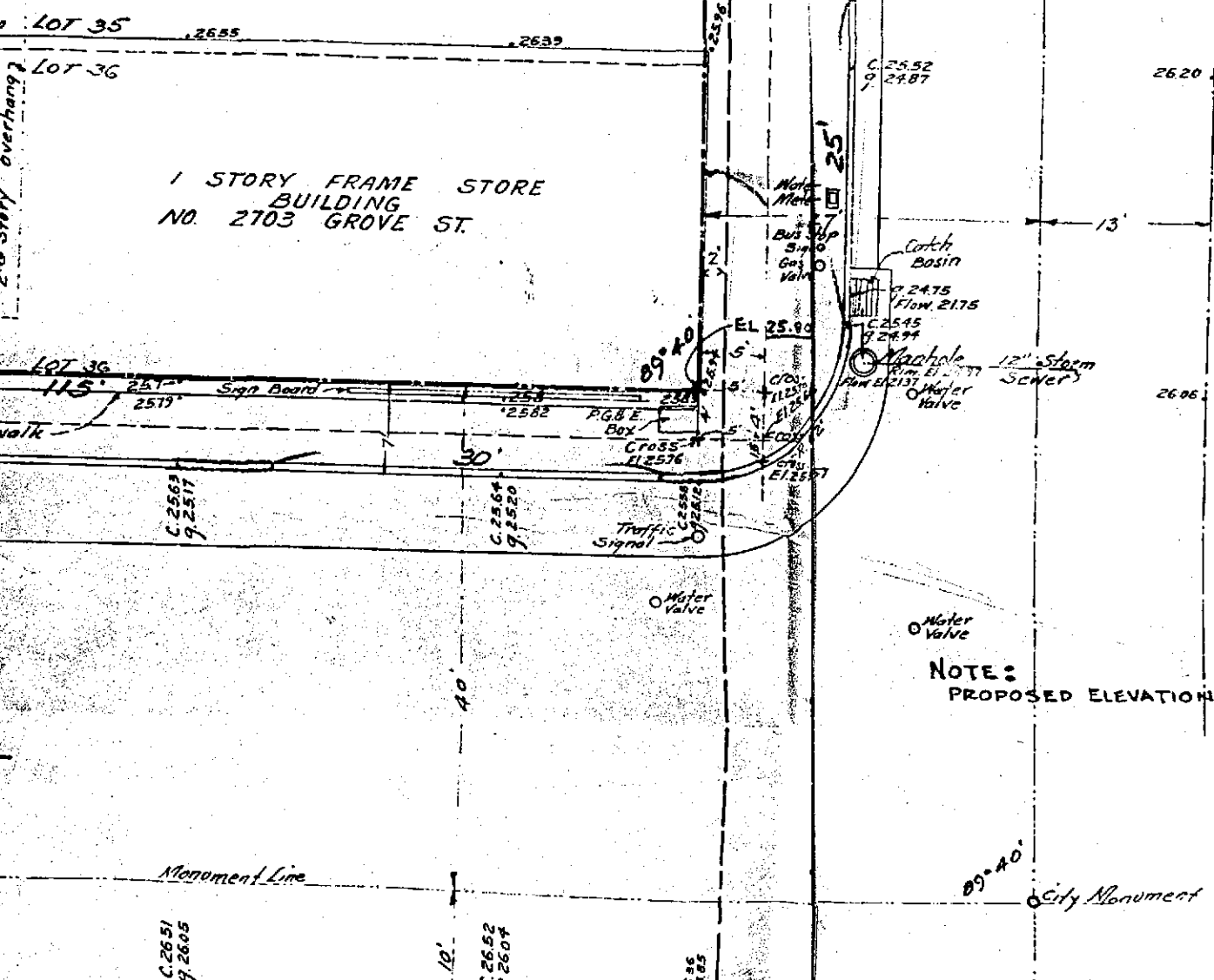
NOTE: City Manager permit Required.  
 No Building Set-back.  
 Pump Block Set-back 10 Feet.  
 Bench Mark, "B" in Curb 2' West of  
 East Return, North East Corner  
 28th Street and Grove Street.  
 Elevation = 28.901, City of Oakland  
 B.M. # 135.  
 Elevations are shown thus, C = Curb,  
 g = Gutter, C.2534, C.2612, g.2490, g.2552  
 and thus, 2563, 2596, 277, 264 & 257.

2 STORY FRAME HOUSE  
 NO. 664 - 27TH ST.

Gutter to House 8'4" East

2 STORY FRAME HOUSE  
 NO. 658 & 660 27TH ST.





NOTE:  
PROPOSED ELEVATIONS SHOWN THUS- EL. 25.6

**SHELL OIL COMPANY**  
 SERVICE STATION NO.  
 NW CORNER OF GROVE &  
 27TH STS. OAKLAND, CALIF.  
 Scale: 1"=8'  
 JAN. 20, 1959 SURVEY NO.  
 C. Young R. 1460 7007  
 C.C. Young, Civil Engineer

Z-28790

4