

Wickham, Jerry, Env. Health

From: Isaacson, Kathleen A [KAI3@pge.com]
Sent: Thursday, July 24, 2014 11:41 AM
To: Wickham, Jerry, Env. Health
Subject: FW: PG&E Oakland GC Yard - groundwater
Attachments: Oakland GC yard well locations fig_02.pdf; Oil in well 5 photo 7-21-14.jpg

Jerry – now this should reach you.

From: Isaacson, Kathleen A
Sent: Thursday, July 24, 2014 11:37 AM
To: 'jerry.wickham@acgov.org'
Cc: Yemia Hashimoto (yemia.hashimoto@amec.com); LePage, Ben; Conner, Anne P; Craig, Tracy A
Subject: PG&E Oakland GC Yard - groundwater

Jerry – to follow up on our conversation this morning, I am sending you a site map with the location of wells at the Oakland GC yard on Coliseum Way and a picture taken during the sounding of well OW-5. AMEC/ETIC were at the site to conduct well destruction activities. All wells were sounded for total depth prior to the destruction of wells OW-1, 2, 4, and 8. OW-3 was previously destroyed and OW-6 and OW-7 have been retained at your request to provide future monitoring locations for the off-site source of DCB. OW-5 was planned for destruction but as shown in the photo, an oily material was noted in the well – the well has been retained. As you know TPH/oil has not been an issue for the GC yard well, so this issue is totally unexpected. We will review the history of both the GC yard and the adjoining properties, in particular the former AAA facility. We will also attempt to collect a sample of the oil for finger printing. Based on those results, PG&E will provide a recommendation for next steps.

Please let me know if you have any questions.

Thanks for your assistance,

Kathleen

Kathleen A. Isaacson, PG, CHG
Consultant Project Manager
Environmental Remediation
WAU & Company
400 Montgomery Street Suite 1100
San Francisco, CA 94104
phone 415.392.3875
cell 415.203.8046
kai3@pge.com

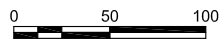
PG&E is committed to protecting our customers' privacy.

To learn more, please visit <http://www.pge.com/about/company/privacy/customer/>

Plot Date: 11/30/11 - 10:50am. Plotted by: kristin.uber
 Drawing Path: S:\13000\13045\13045.007\F\ask_02\11_1108_ASI\A1. Drawing Name: _fig_02.dwg



APPROXIMATE SCALE IN FEET



EXPLANATION

- Groundwater Monitoring Well
- Destroyed Groundwater Monitoring Well

--- Approximate Property Boundary

+++++ Railroad Spur

ABBREVIATIONS

- AST Aboveground Storage Tank
- UST Underground Storage Tank

NOTES

1. Well locations are approximate.
2. Base map from CCS Environmental Services, Inc., 2005, Groundwater Monitoring Report, PG&E Oakland General Construction Yard, Oakland, California.

<p>SITE MAP Pacific Gas & Electric Company Oakland General Construction Yard 4930 Coliseum Way, Oakland, California</p>		
By: TK	Date: 11/30/2011	Project No. 13045.007.F
		Figure 2

