

*California Department of Transportation  
Division of Maintenance  
Structure Maintenance and Investigations*

---

**B**<sub>ridge</sub>

**I**<sub>nspection</sub>

**R**<sub>ecords</sub>

**I**<sub>nformation</sub>

**S**<sub>ystem</sub>

---

The requested documents have been generated by BIRIS.

These documents are the property of the California Department of Transportation and should be handled in accordance with Deputy Directive 55 and the State Administrative Manual.

Records for “Confidential” bridges may only be released outside the Department of Transportation upon the execution of a confidentiality agreement.

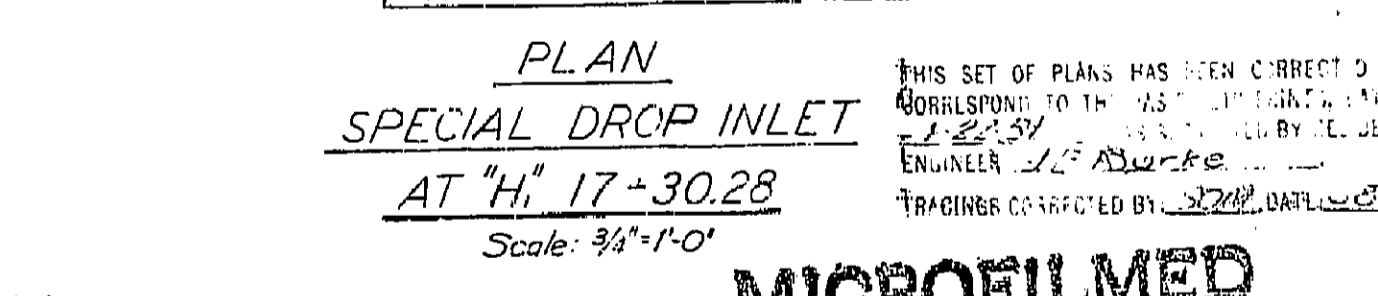
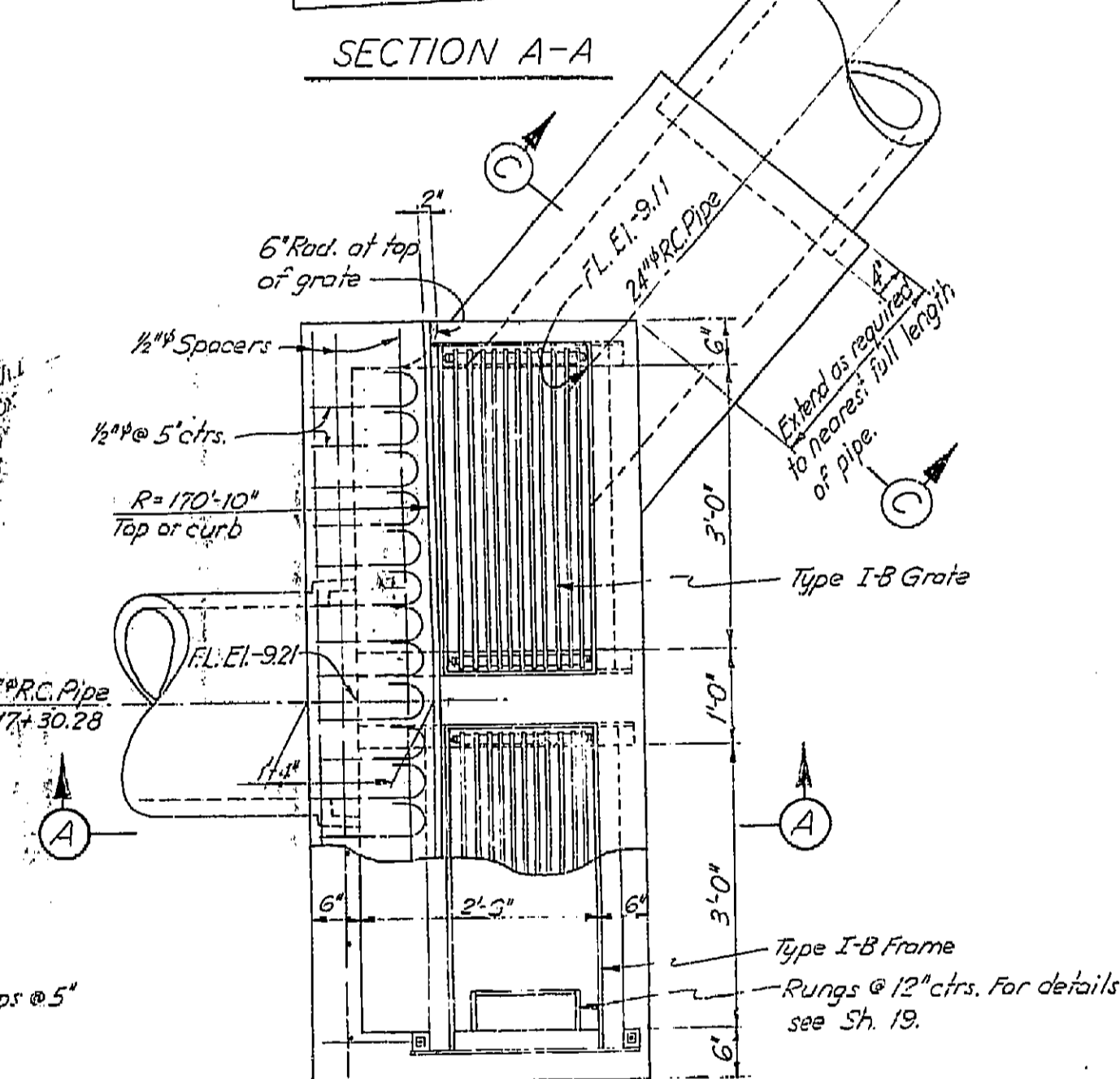
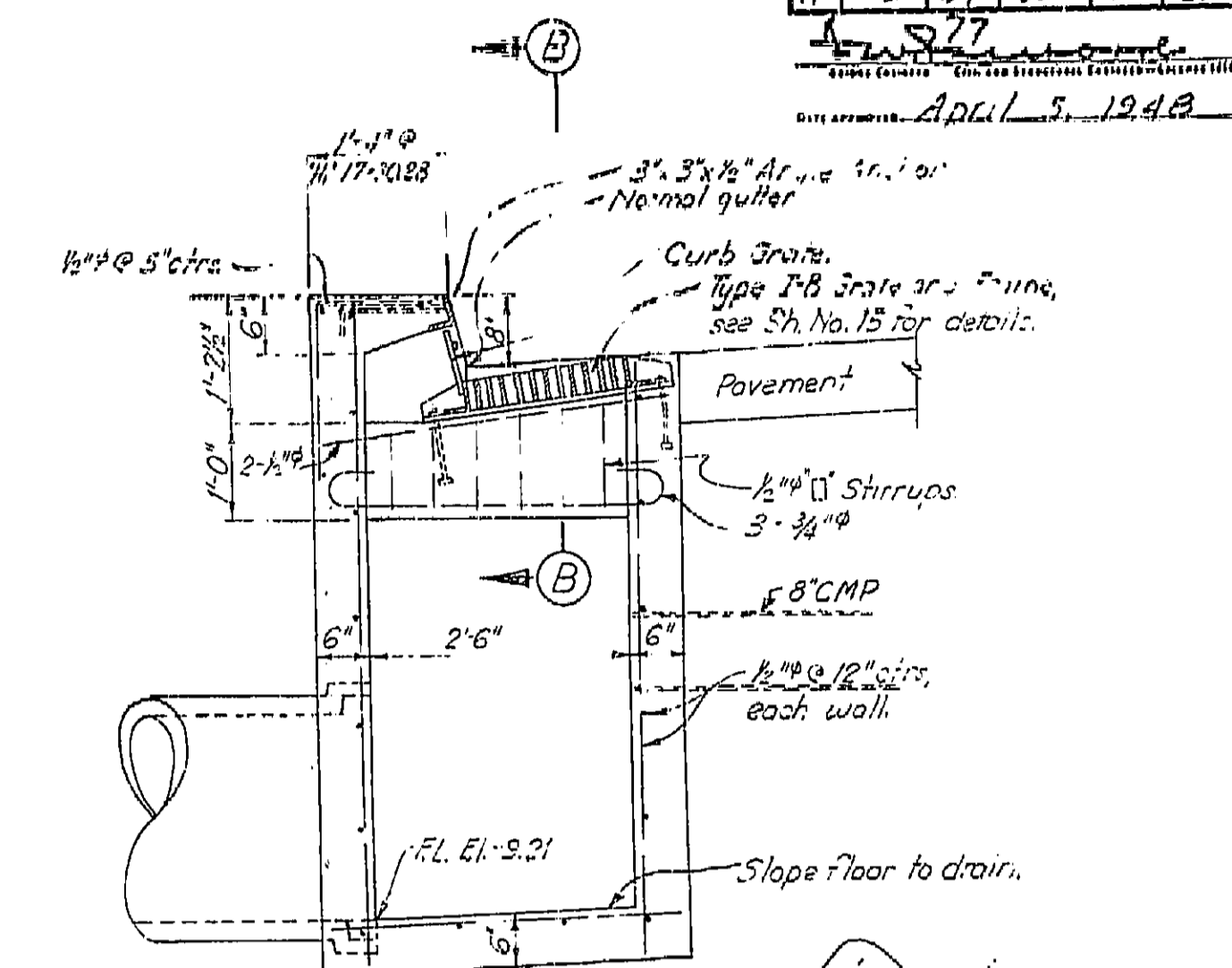
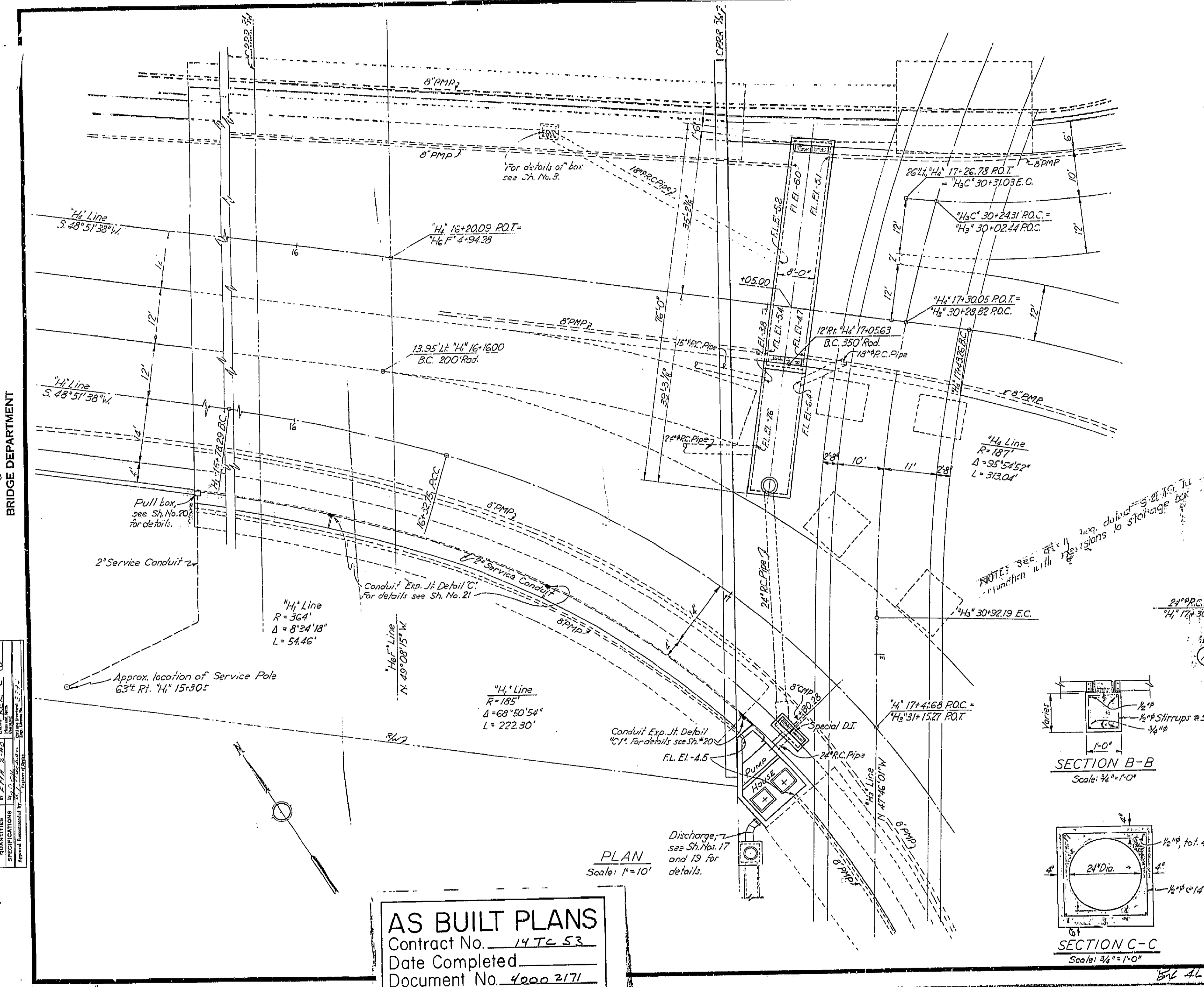
173418) 11.13

STATE	PROJ. NO.	SHEET NO.	TOTAL SHEETS
CAL.		21	21

DATE	SCALE	DATE	SCALE
11-13-59	1"=10'	11-13-59	1"=10'

APPROVED: *[Signature]*  
DATE: April 5, 1948



PLAN  
SPECIAL DROP INLET  
AT H<sub>i</sub> 17+30.28  
Scale: 3/4"=1'-0"

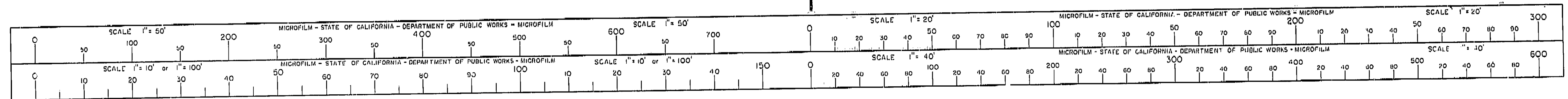
THIS SET OF PLANS HAS BEEN CHECKED TO CORRESPOND TO THE AS BUILT PLANS BY THE ENGINEER, J. L. BURKE, TRACED BY THE ENGINEER, J. L. BURKE, TRACED BY THE ENGINEER, J. L. BURKE.

**MICROFILMED**

STATE OF CALIFORNIA DEPARTMENT OF PUBLIC WORKS DIVISION OF HIGHWAYS			
SATHER UNDERPASS AND CLOROX OVERPASSING			
PUMPING PLANT LAYOUT			
SCALE: As Noted	BRIDGE: 33-736	FILE:	DRAWING: C1938

**AS BUILT PLANS**  
Contract No. 14TC 53  
Date Completed \_\_\_\_\_  
Document No. 4000 2171

I HEREBY CERTIFY THAT THIS IS A TRUE AND ACCURATE COPY OF THE ABOVE DOCUMENT TAKEN UNDER MY DIRECTION AND CONTROL ON THIS DATE IN SACRAMENTO, CALIFORNIA PURSUANT TO AUTHORIZATION BY THE DIRECTOR OF PUBLIC WORKS.  
DATE: \_\_\_\_\_ SIGNATURE: \_\_\_\_\_ TITLE: \_\_\_\_\_



DESIGN	BY: J. L. BURKE	DATE: 11-13-59
CHECKED	BY: J. L. BURKE	DATE: 11-13-59
APPROVED	BY: J. L. BURKE	DATE: 11-13-59

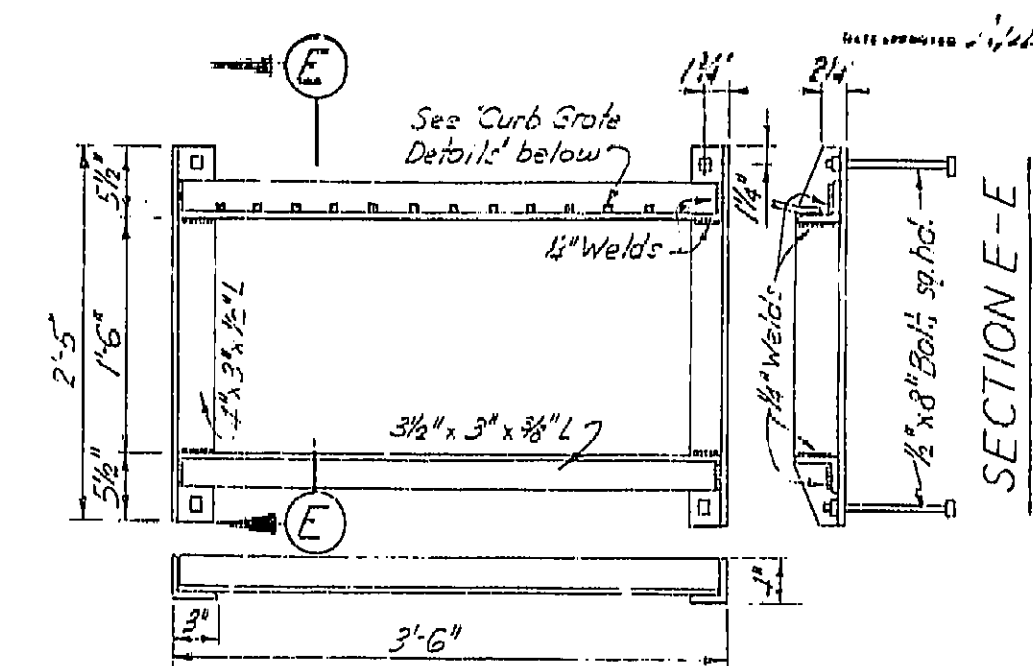
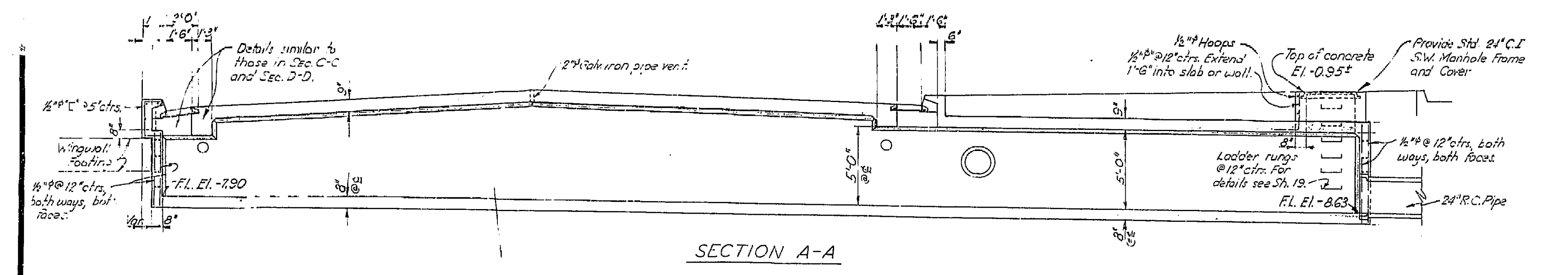
BRIDGE DEPARTMENT

127 30116) unit 3

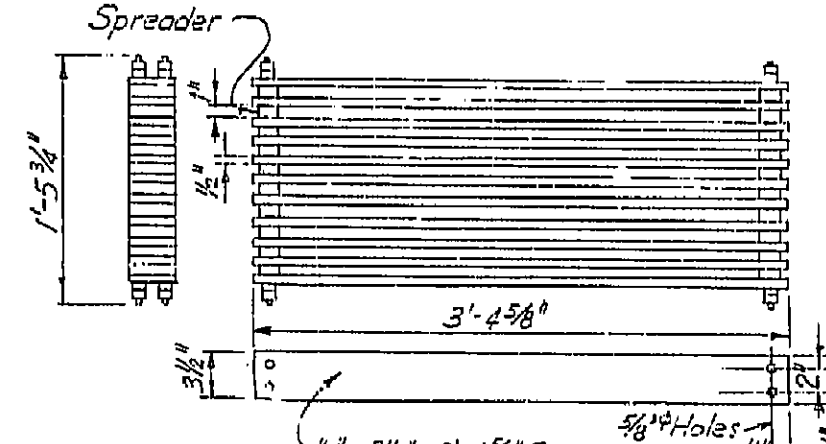
DATE	NO.	BY	REVISION	DATE	NO.

DATE	NO.	BY	REVISION	DATE	NO.

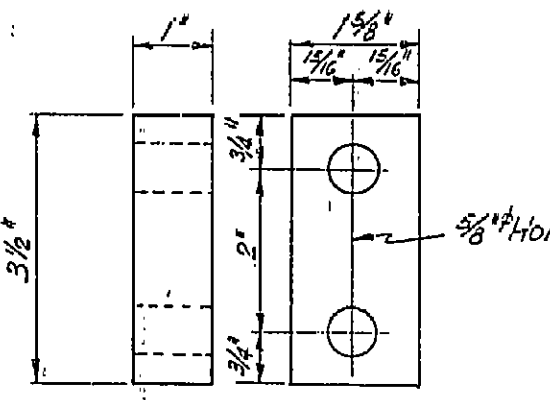
DATE APPROVED: April 2, 1948.



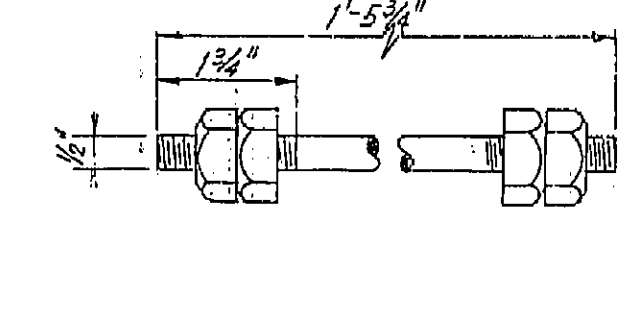
TYPE 1B FRAME DETAILS  
Scale: 1" = 1'-0"



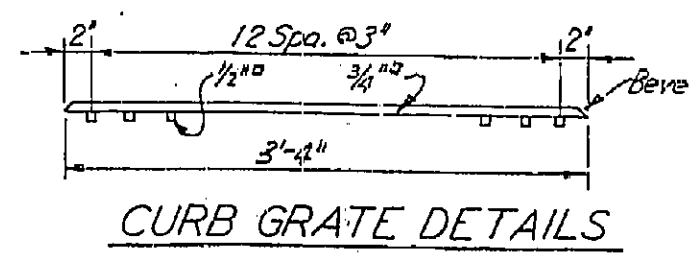
TYPE 1B GRATE DETAILS  
Scale: 1" = 1'-0"



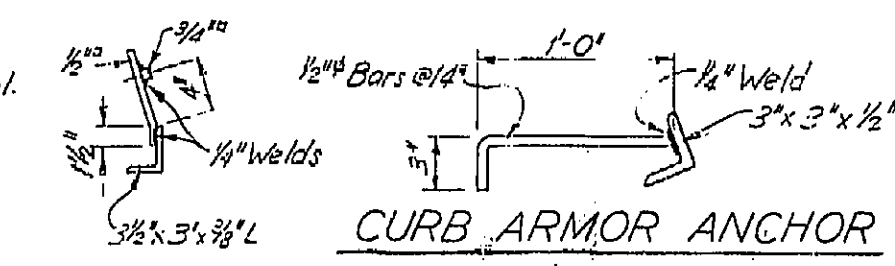
CAST IRON SPREADER  
Scale: Half Size



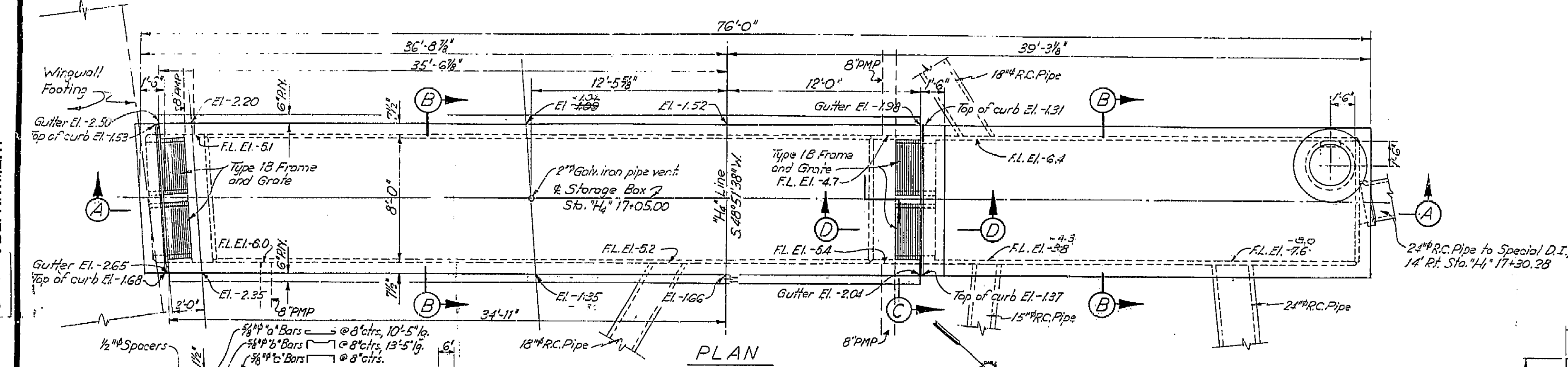
BOLT DETAIL  
Scale: Half Size



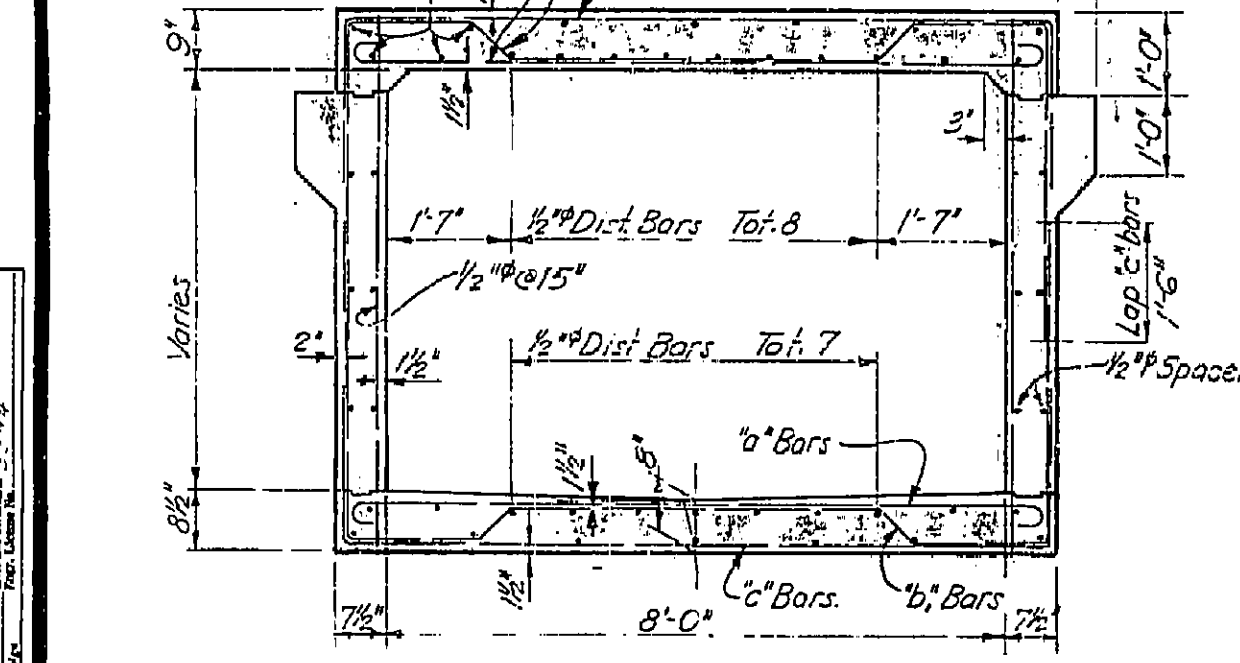
CURB GRATE DETAILS



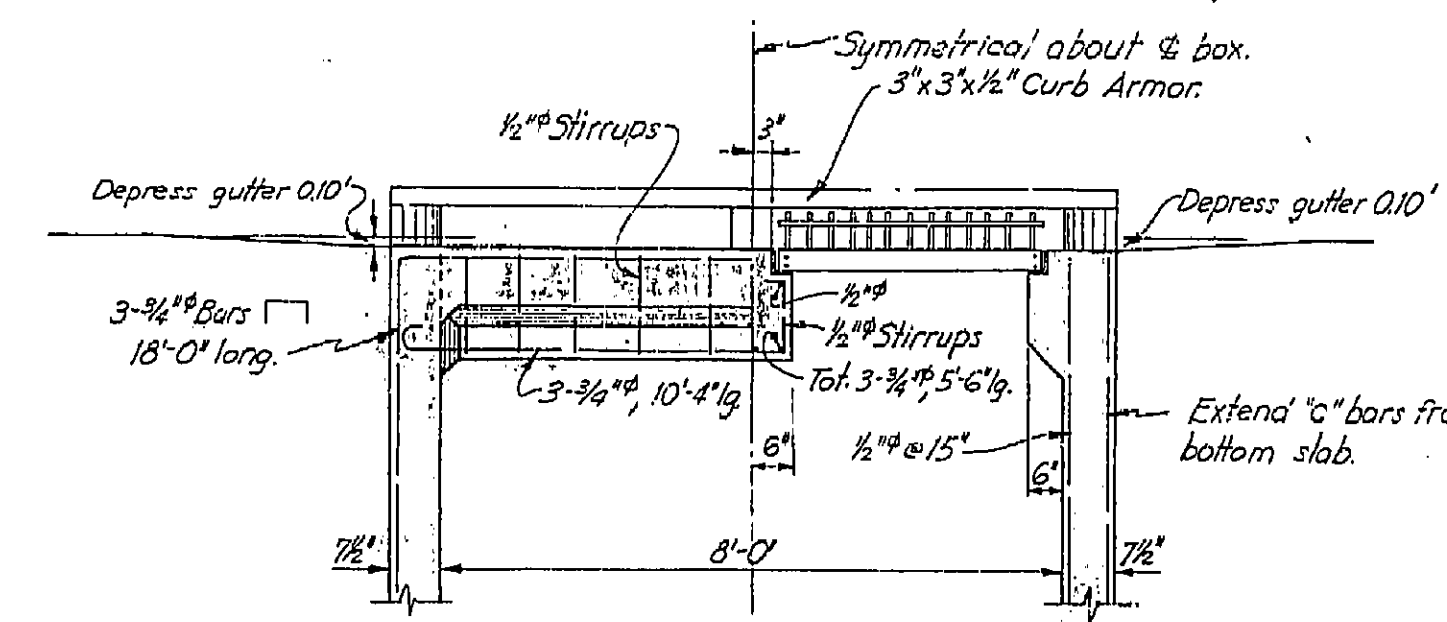
CURB ARMOR ANCHOR  
Scale: 1 1/2" = 1'-0"



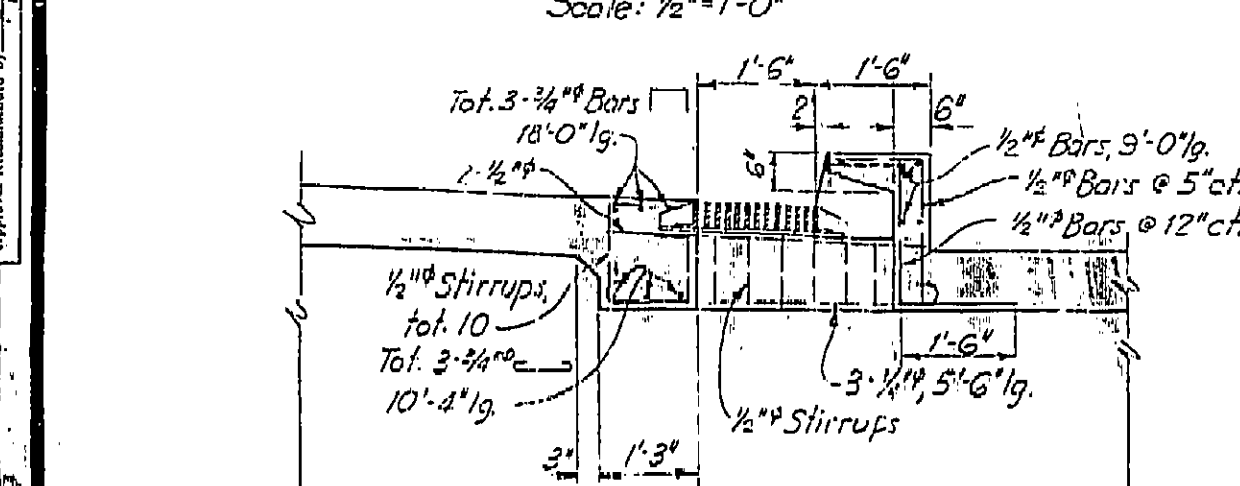
PLAN  
Scale: 1/4" = 1'-0"



SECTION B-B  
Scale: 1/2" = 1'-0"



SECTION C-C  
Scale: 1/2" = 1'-0"



SECTION D-D  
Scale: 1/2" = 1'-0"

**AS BUILT PLANS**  
Contract No. 147653  
Date Completed \_\_\_\_\_  
Document No. 4000 2171

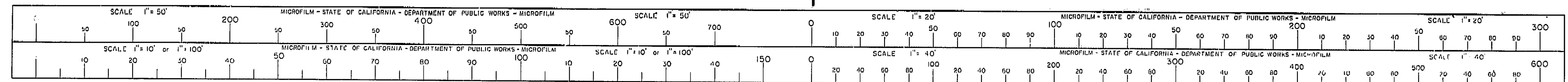
**MICROFILMED**

THIS SET OF PLANS HAS BEEN CORRECTED TO CORRESPOND TO THE AS BUILT PLANS. ENGINEER: [Signature] DATE: 6-8-51

STATE OF CALIFORNIA DEPARTMENT OF PUBLIC WORKS DIVISION OF HIGHWAYS			
SATHER UNDERPASS AND CLOROX OVERCROSSING			
STORAGE BOX DETAILS			
SCALE As Noted	BRIDGE 33-176	FILE 32-187	DRAWING C-1938-45

I HEREBY CERTIFY THAT THIS IS A TRUE AND ACCURATE COPY OF THE ABOVE DOCUMENT TAKEN UNDER MY DIRECTION AND CONTROL ON THIS DATE IN SACRAMENTO, CALIFORNIA PURSUANT TO AUTHORIZATION BY THE DIRECTOR OF PUBLIC WORKS.

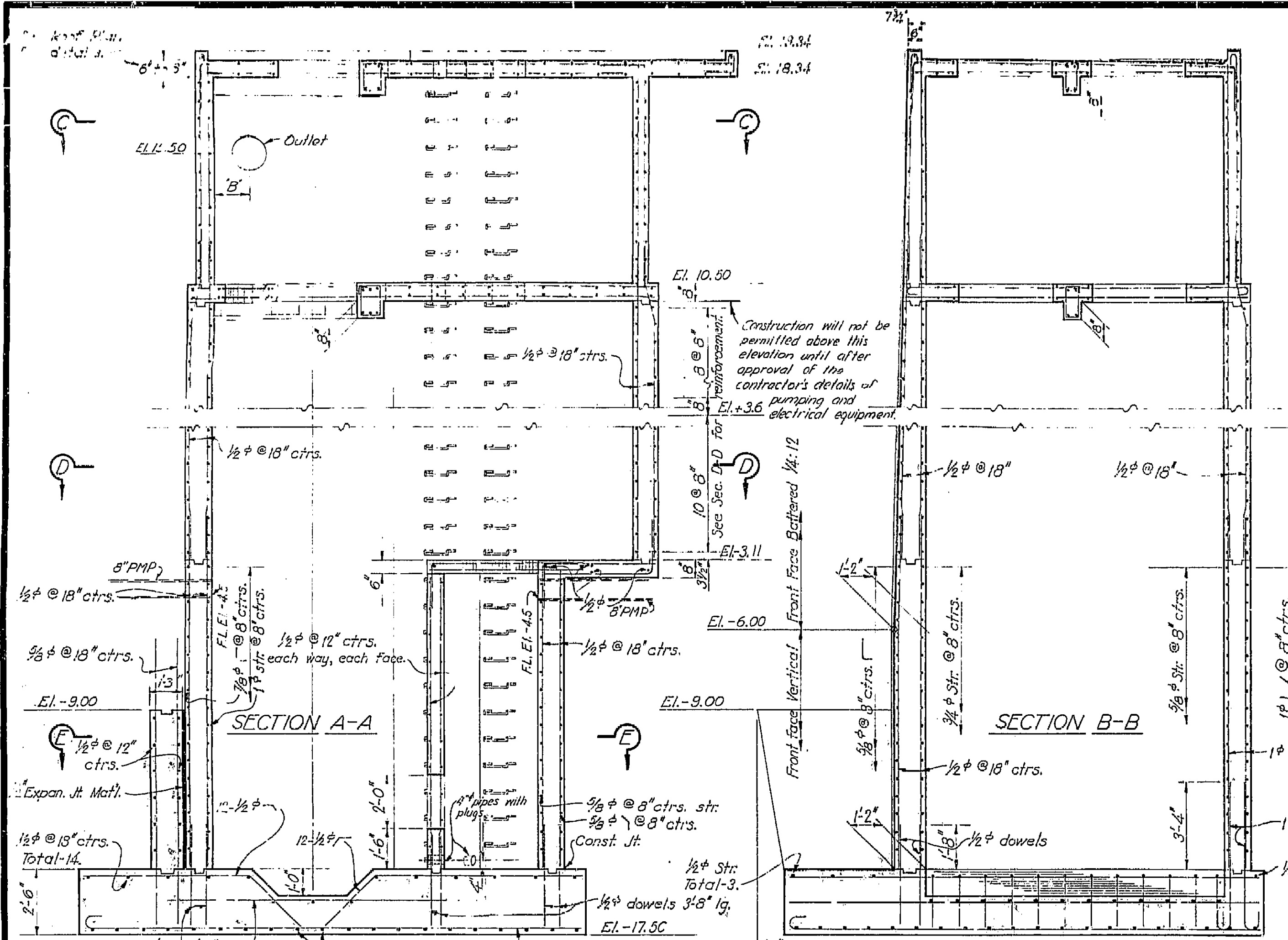
DATE: \_\_\_\_\_ SIGNATURE: \_\_\_\_\_ TITLE: \_\_\_\_\_



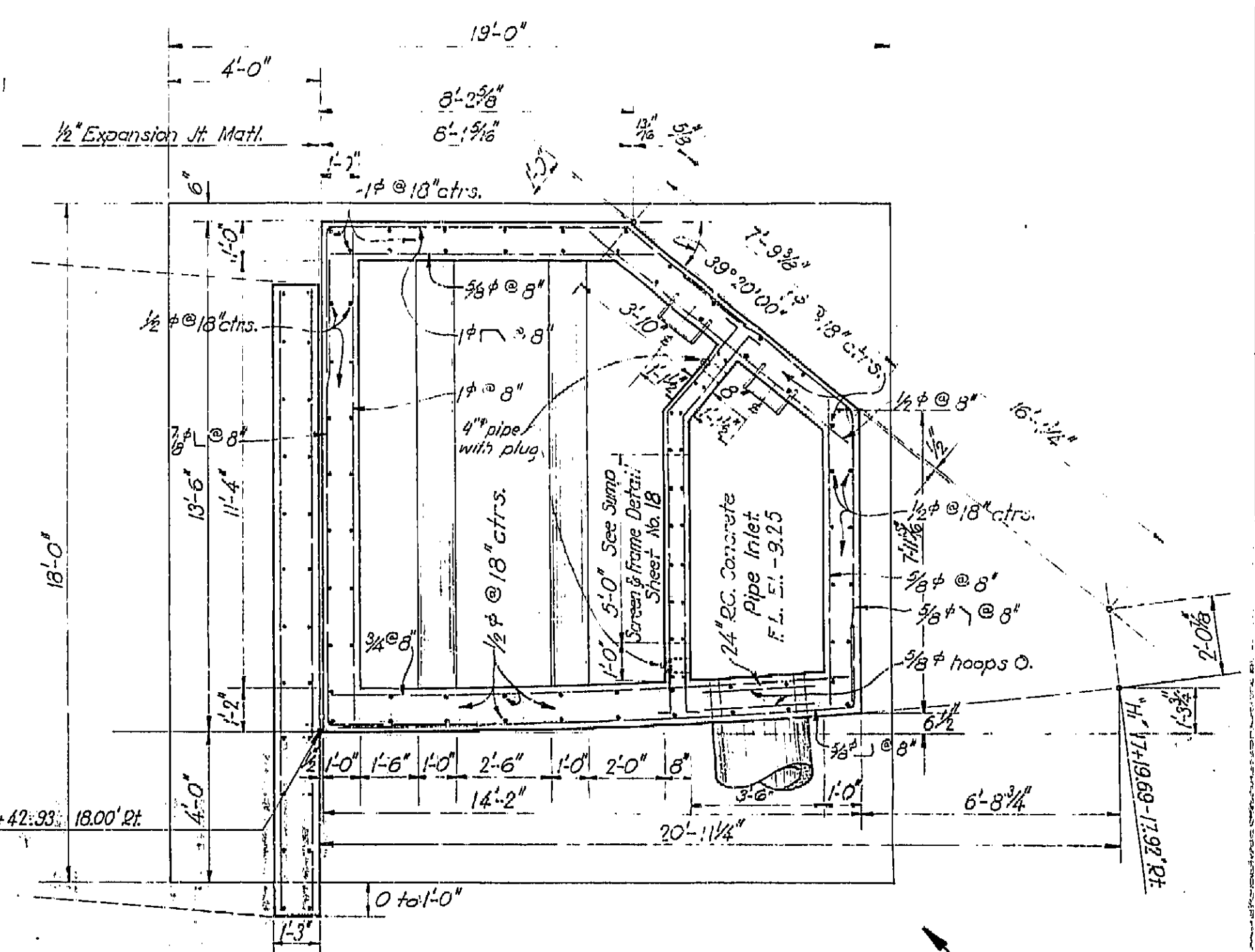
DATE	CONTRACT	BRIDGE	REVISION	SCALE	APPROVAL
7/17	7/14	468	623	1/8" = 1'-0"	21

DATE APPROVED - 7/17/53 1248

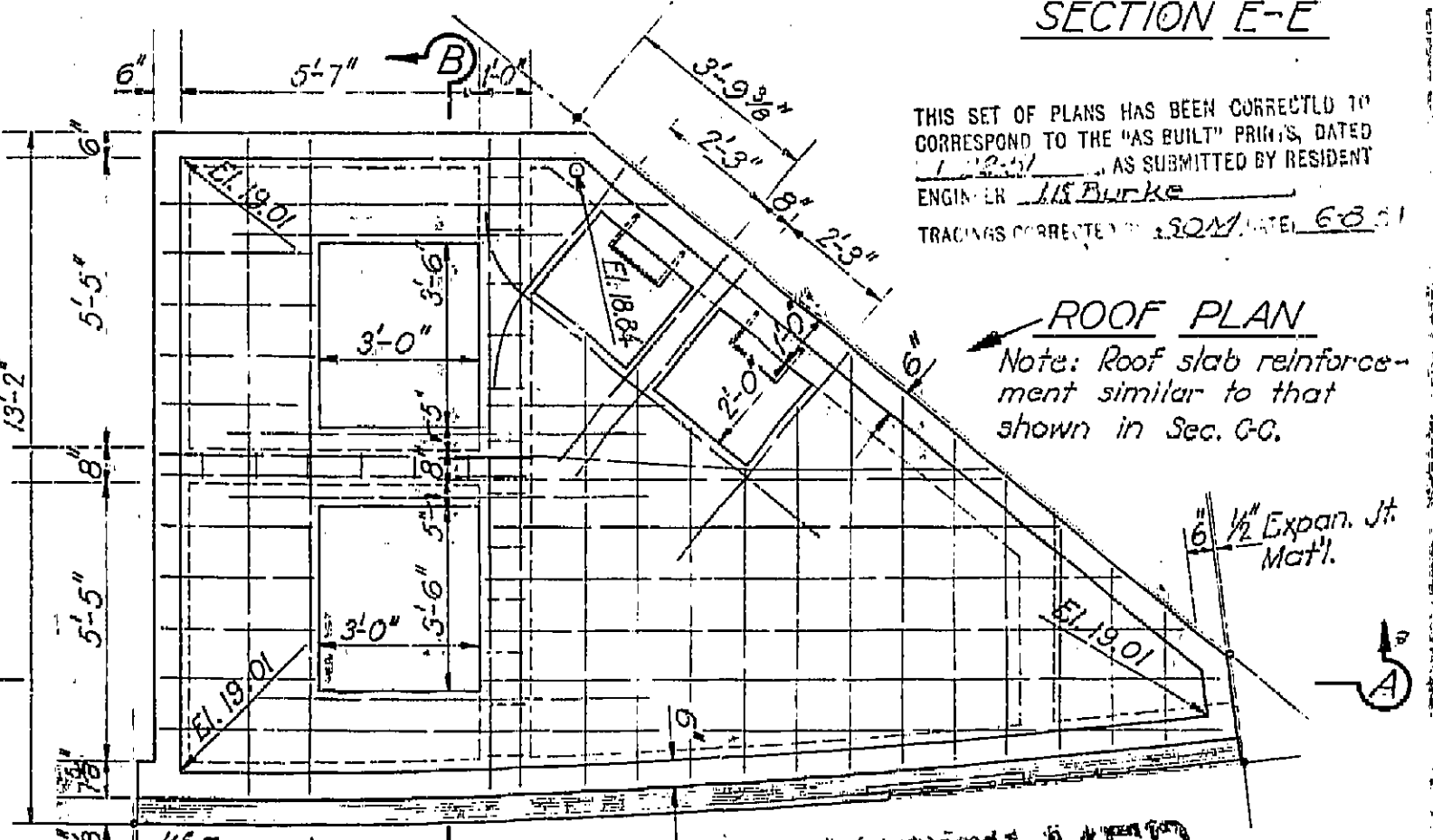
BRIDGE DEPARTMENT



**AS BUILT PLANS**  
 Contract No. 14 T 2 53  
 Date Completed  
 Document No. 468 2171



THIS SET OF PLANS HAS BEEN CORRECTED TO CORRESPOND TO THE "AS BUILT" PRINTS, DATED 1-2-54, AS SUBMITTED BY RESIDENT ENGINEER J.K. BURKE. TRACKING REFERENCE: 13021, TEL. 68-1



MICROFILMED

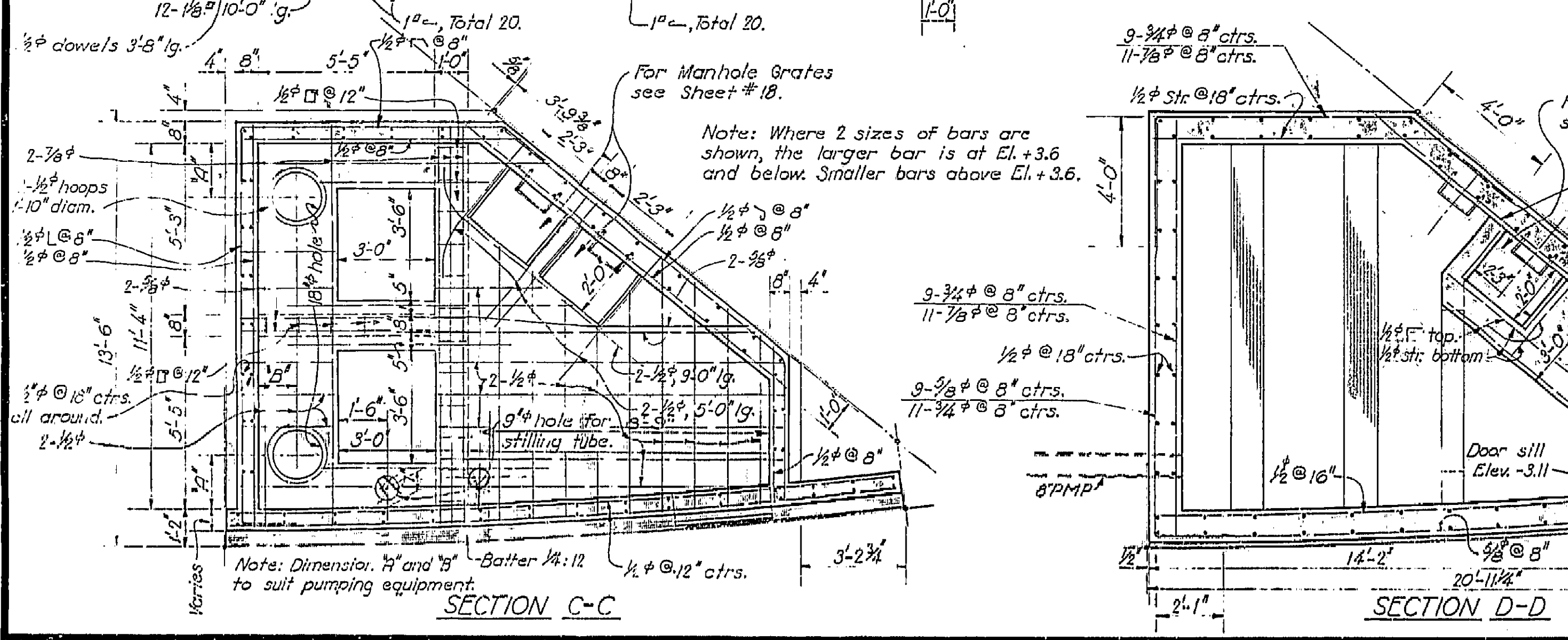
STATE OF CALIFORNIA  
 DEPARTMENT OF PUBLIC WORKS  
 DIVISION OF HIGHWAYS

**SATHER UNDERPASS & CLOROX OVERCROSSING**

**PUMP HOUSE**

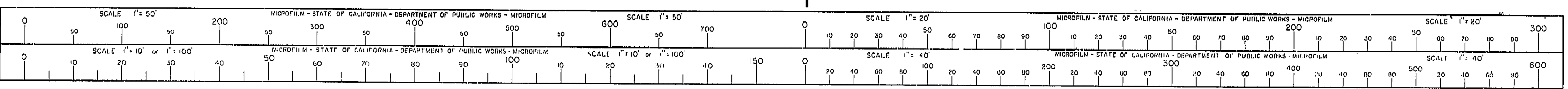
SCALE 3/8" = 1'-0" BRIDGE 23-184 FILE DRAWING C-1938-46

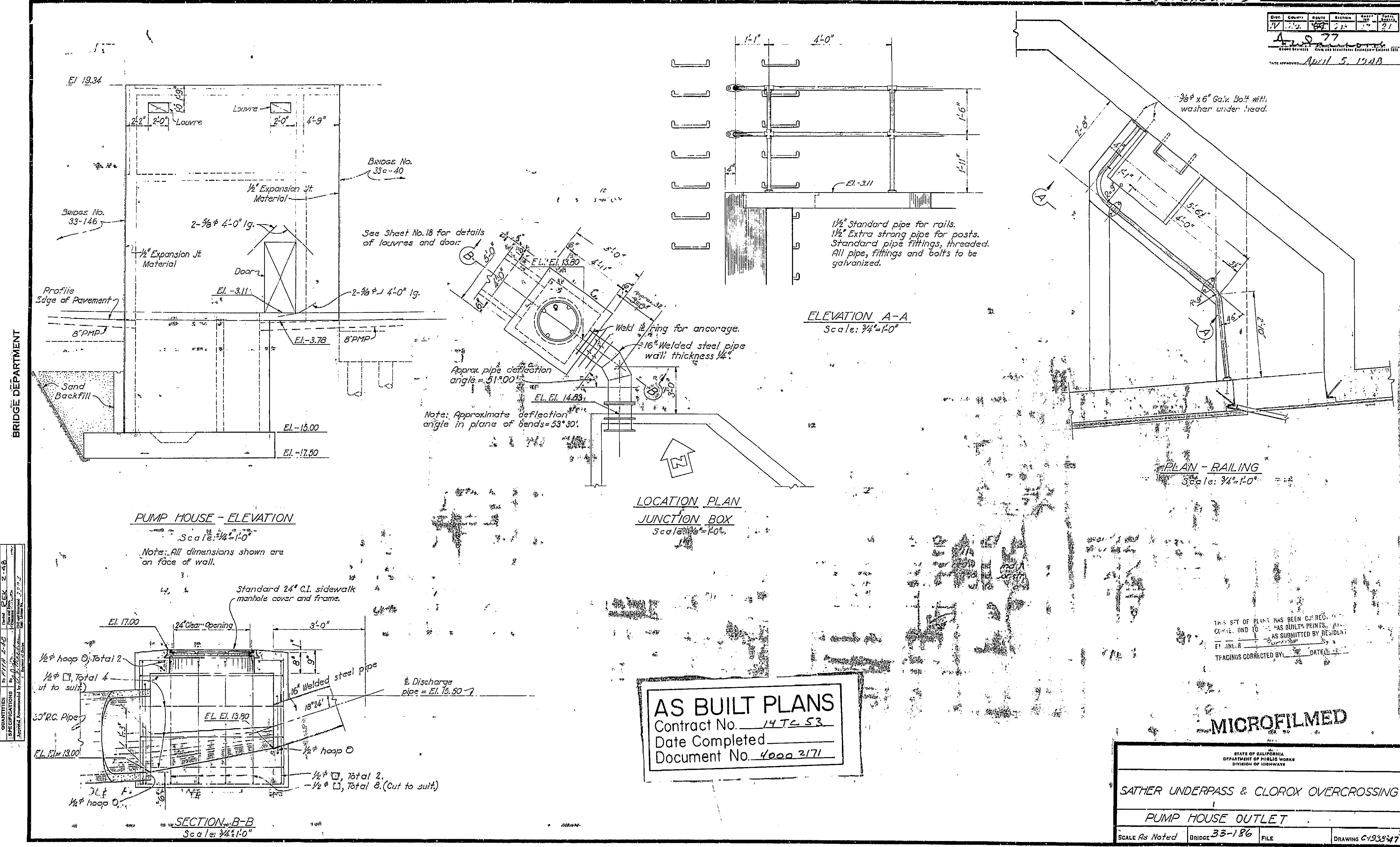
DESIGNED BY	DATE
QUANTITIES	DATE
REVISIONS	DATE
APPROVED	DATE



I HEREBY CERTIFY THAT THIS IS A TRUE AND ACCURATE COPY OF THE ABOVE DOCUMENT TAKEN UNDER MY DIRECTION AND CONTROL ON THIS DATE IN SACRAMENTO, CALIFORNIA PURSUANT TO AUTHORIZATION BY THE DIRECTOR OF PUBLIC WORKS.

DATE: \_\_\_\_\_ SIGNATURE: \_\_\_\_\_ TITLE: \_\_\_\_\_





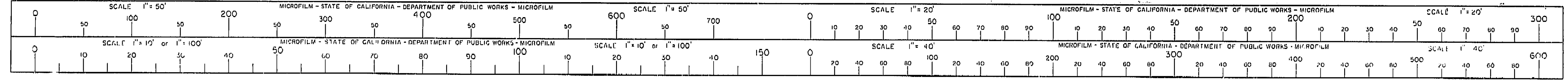
**AS BUILT PLANS**  
 Contract No. 14 T-53  
 Date Completed \_\_\_\_\_  
 Document No. 4000 2171

**MICROFILMED**

STATE OF CALIFORNIA DEPARTMENT OF PUBLIC WORKS DIVISION OF HIGHWAYS			
SATHER UNDERPASS & CLOROX OVERCROSSING			
PUMP HOUSE OUTLET			
SCALE As Noted	BRIDGE 33-186	FILE	DRAWING C-193347

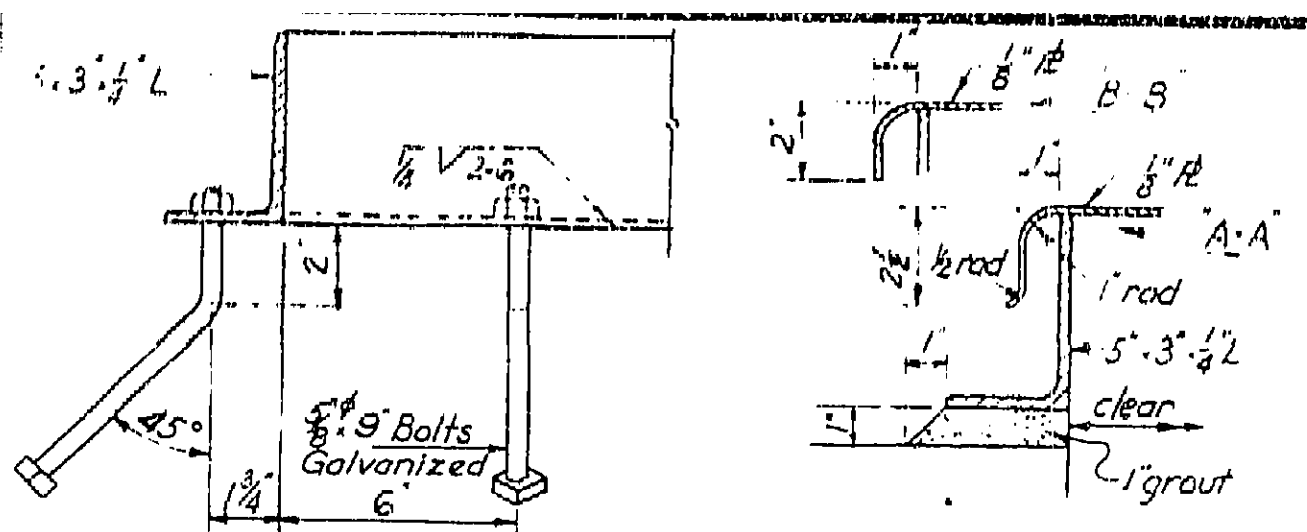
I HEREBY CERTIFY THAT THIS IS A TRUE AND ACCURATE COPY OF THE ABOVE DOCUMENT TAKEN UNDER MY DIRECTION AND CONTROL ON THIS DATE IN SACRAMENTO, CALIFORNIA PURSUANT TO AUTHORIZATION BY THE DIRECTOR OF PUBLIC WORKS.

DATE \_\_\_\_\_ SIGNATURE \_\_\_\_\_ TITLE \_\_\_\_\_



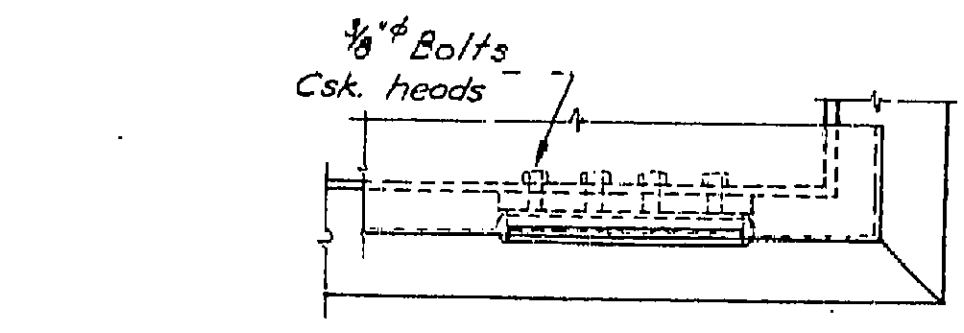
DESIGN	DATE	BY
QUANTITIES	DATE	BY
SPECIFICATIONS	DATE	BY
APPROVED	DATE	BY

UT 34 (10) 11. 1. 2  
 11/21/44  
 44-37  
 April 3, 1945

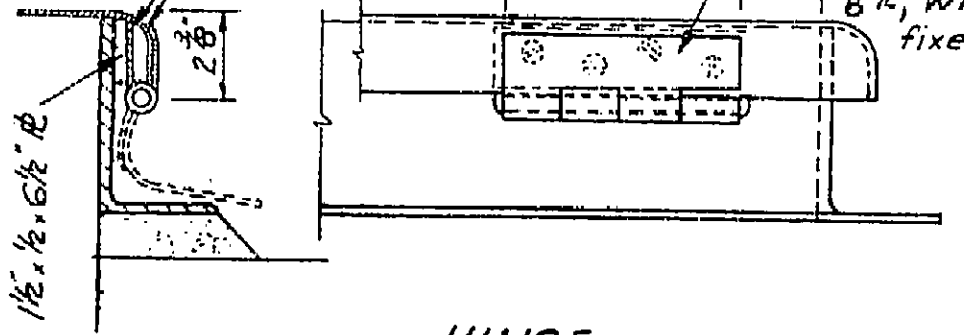


**ANCHOR**  
 SECTION A-A & B-B

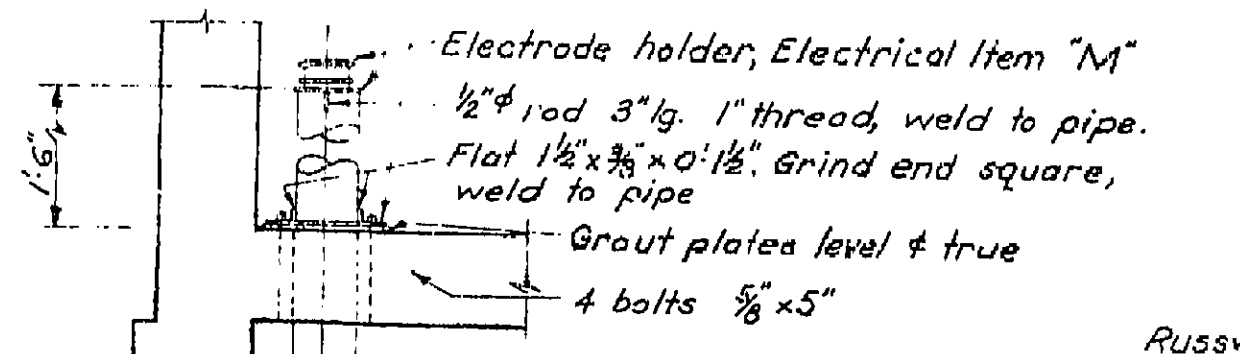
8 bolts required for each frame



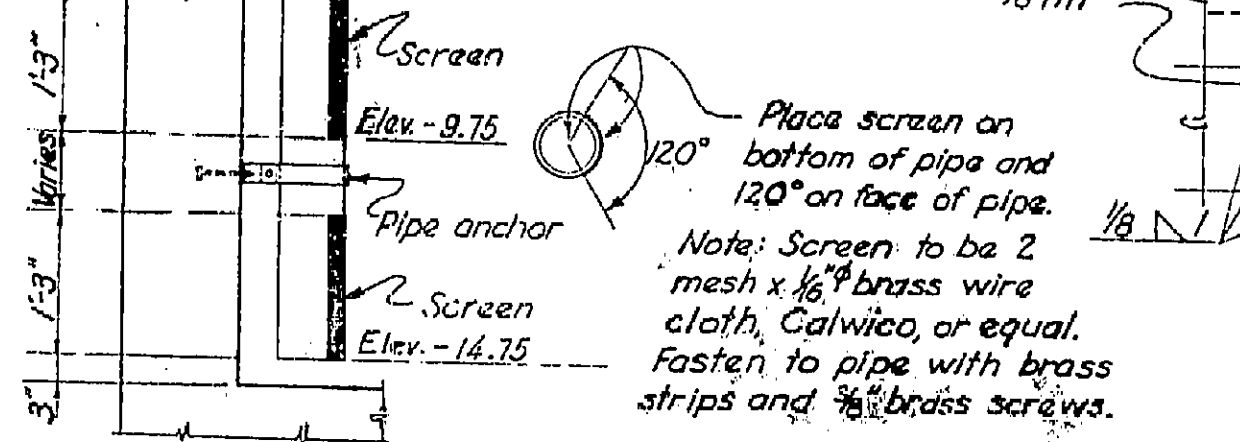
**HINGE**  
 2 required on manhole B's for A & B.



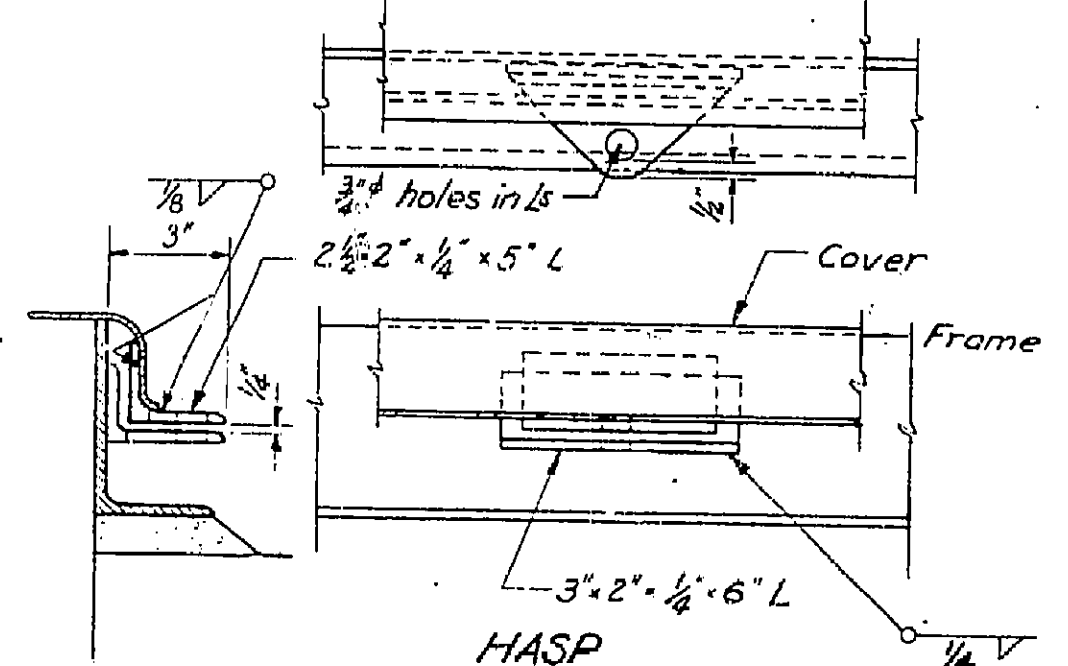
**PIPE SUPPORT**



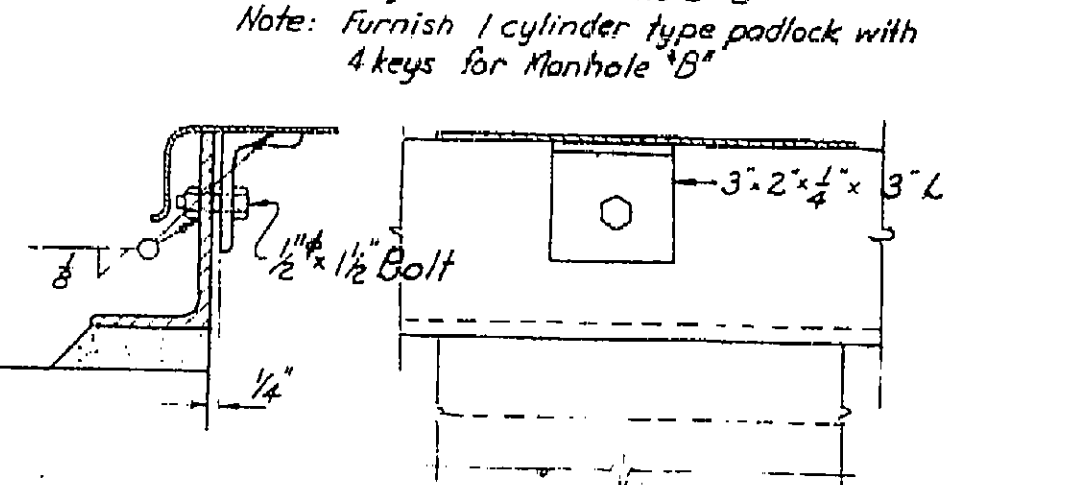
**PIPE ANCHOR**



**STILLING TUBE DETAILS**  
 Scale: 3/4" = 1'-0"

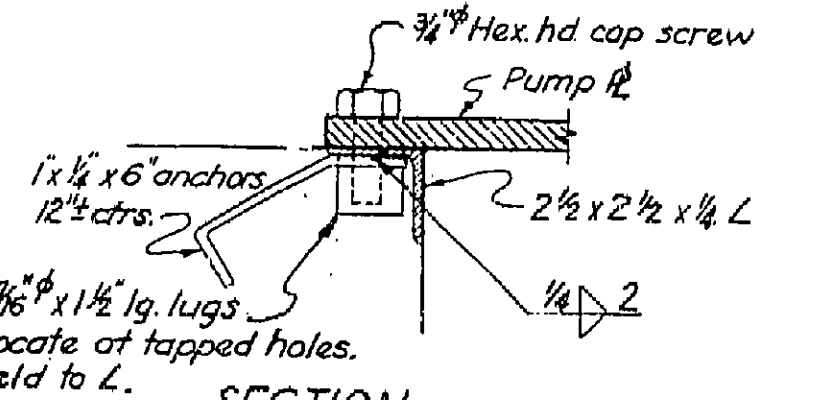


**HASP**  
 1 required on manhole 'B'  
 Note: Furnish 1 cylinder type padlock with 4 keys for Manhole 'B'

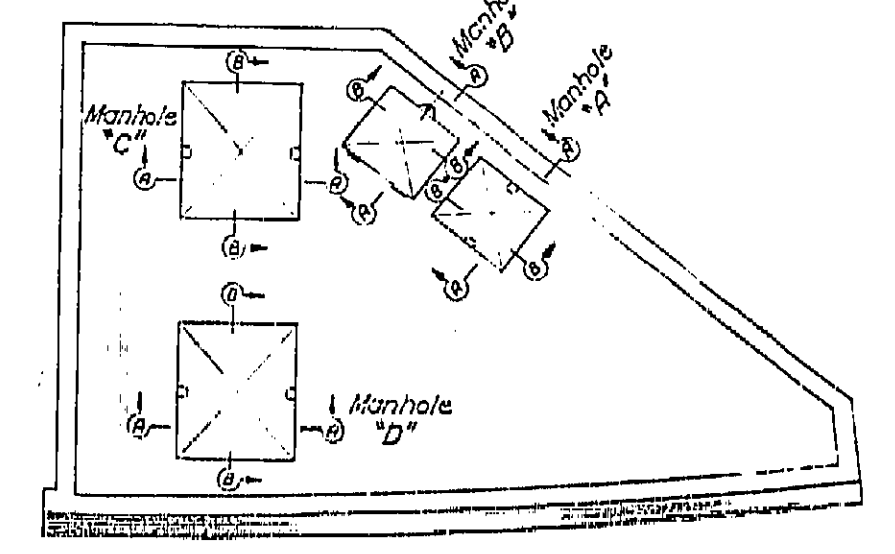


**INSIDE FASTENING**  
 2 required on manhole A, C & D

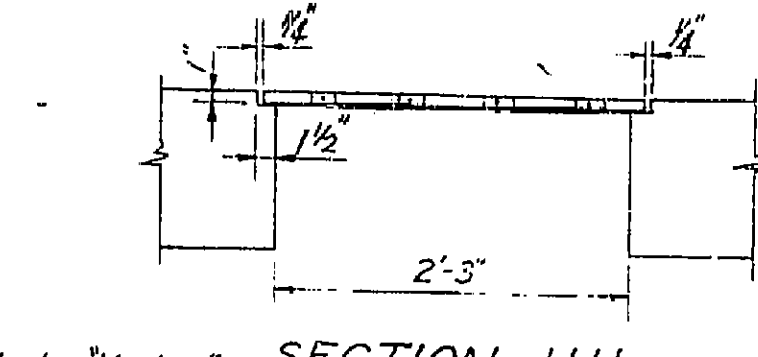
**MANHOLE FRAME AND COVER DETAILS**  
 Scale: 3" = 1'-0"



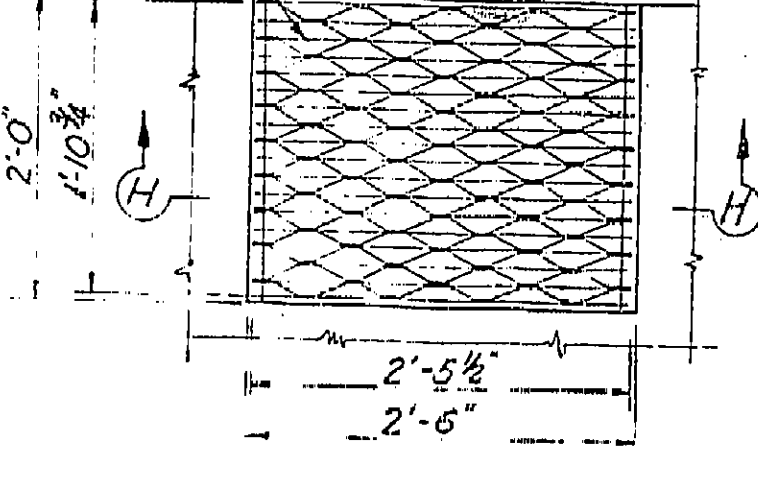
**SECTION PUMP PLATE FRAME**  
 Scale: 3" = 1'-0"  
 Submit shop details for approval.



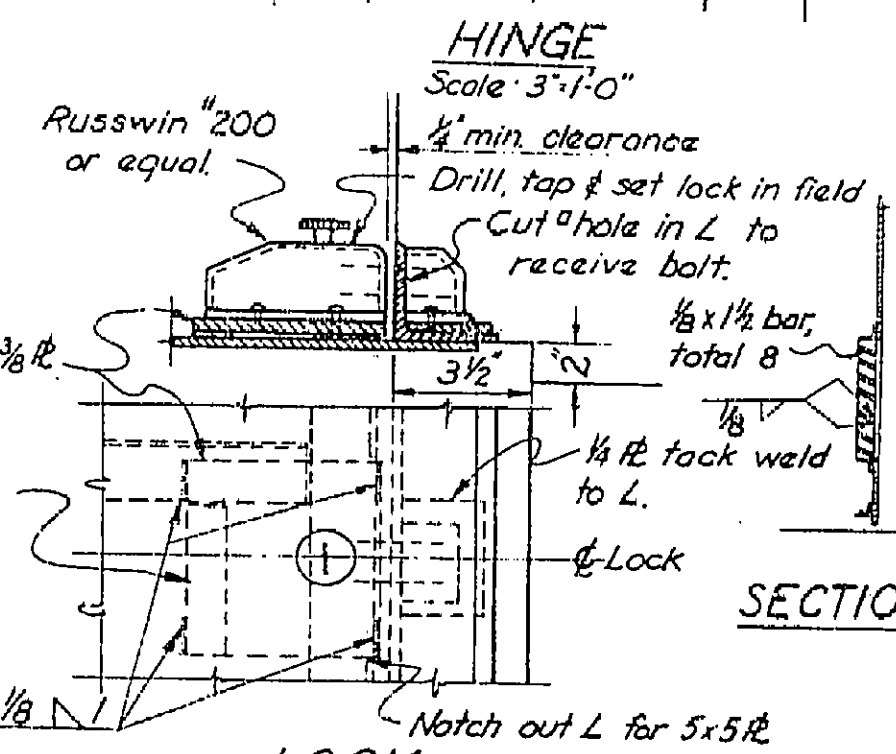
**ROOF DIAGRAM**



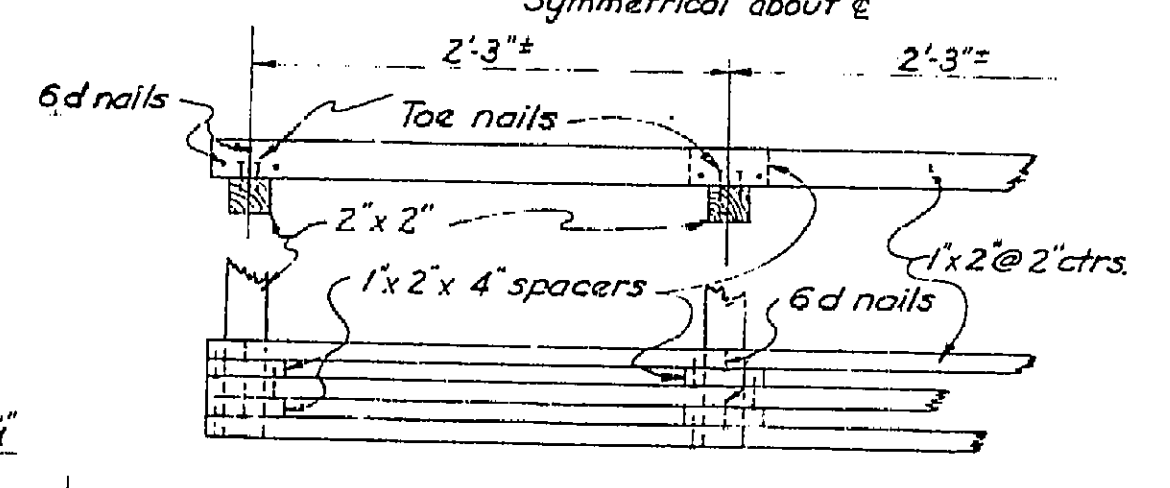
**SECTION HH MANHOLE GRATE**  
 Scale: 1" = 1'-0"



**PLAN MANHOLE GRATE**  
 Scale: 1" = 1'-0"

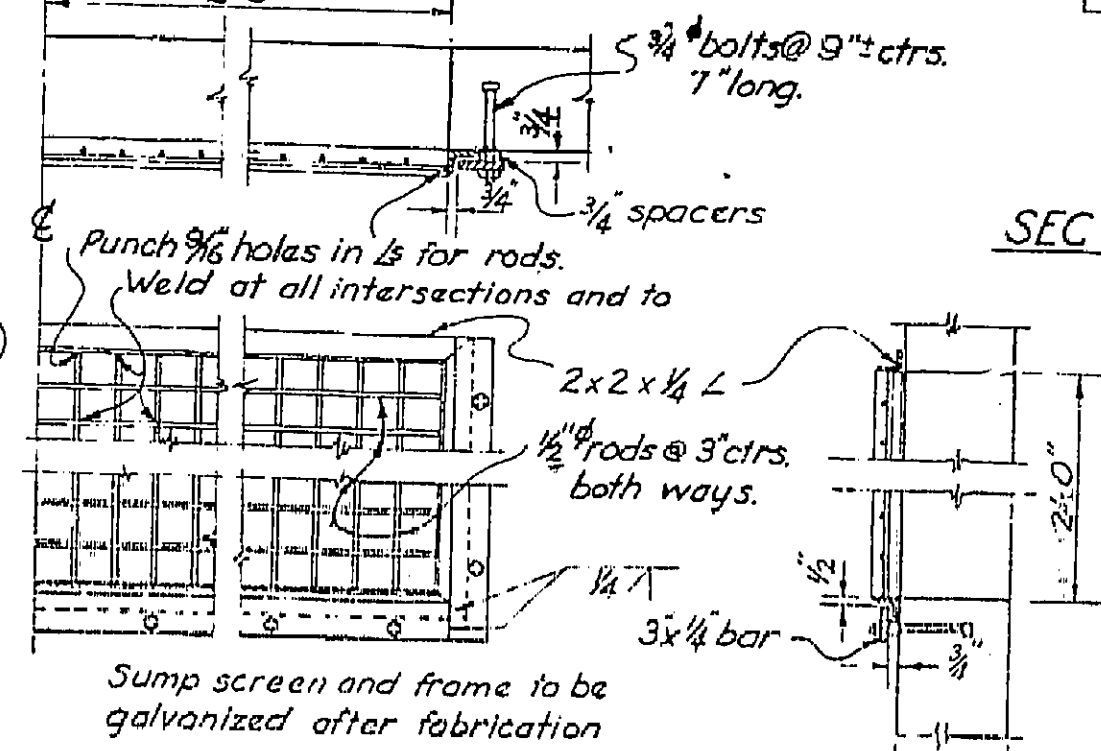


**DOOR AND DETAILS**  
 Scale: As shown

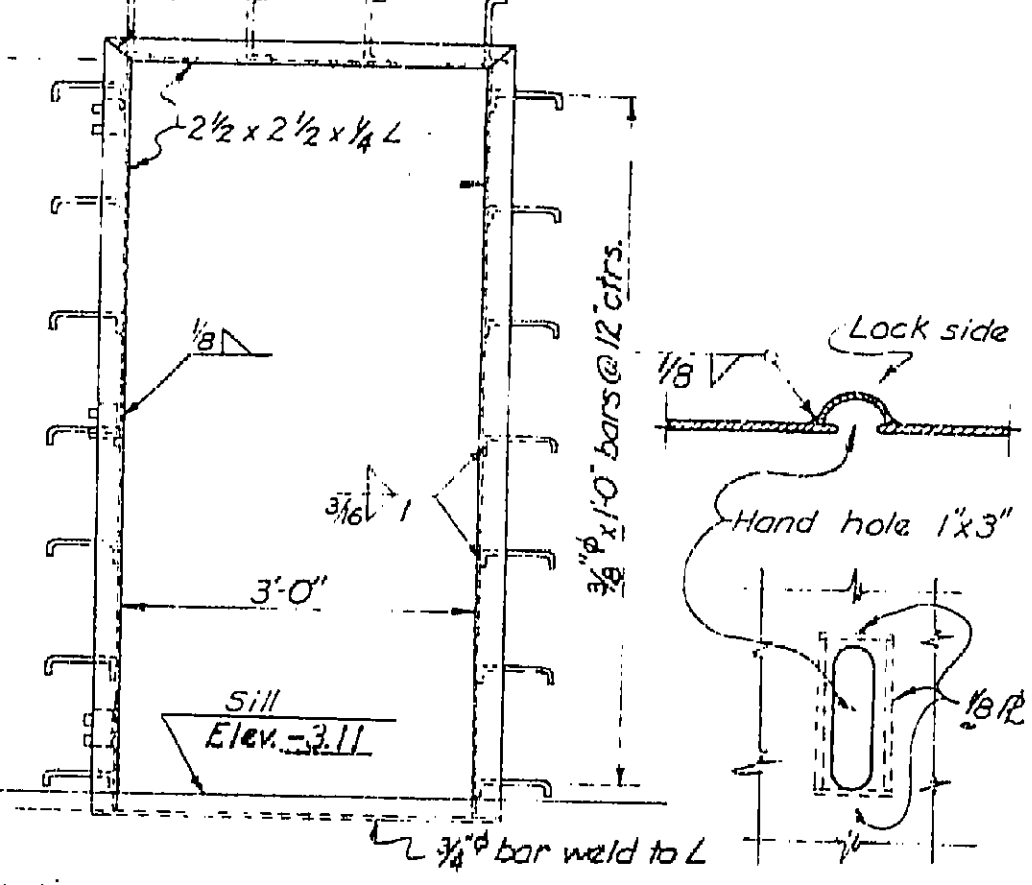


**WOOD FLOOR COVERING**  
 Scale: 1 1/2" = 1'-0"

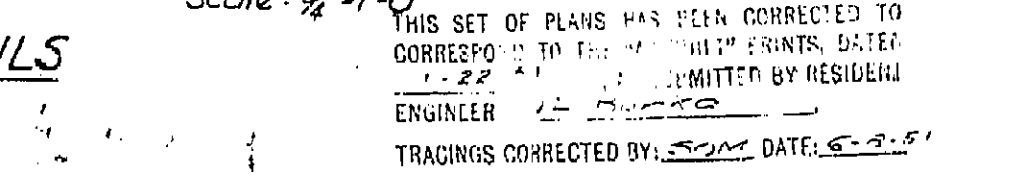
Note: Flooring to be made of redwood and to cover area shown in front of switchboard. Construct floor in units that can be taken out for cleaning.



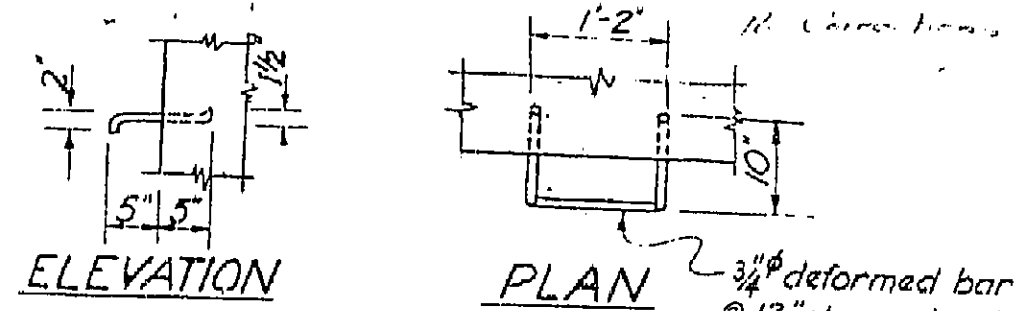
**SUMP SCREEN AND FRAME**  
 Scale: 1" = 1'-0"



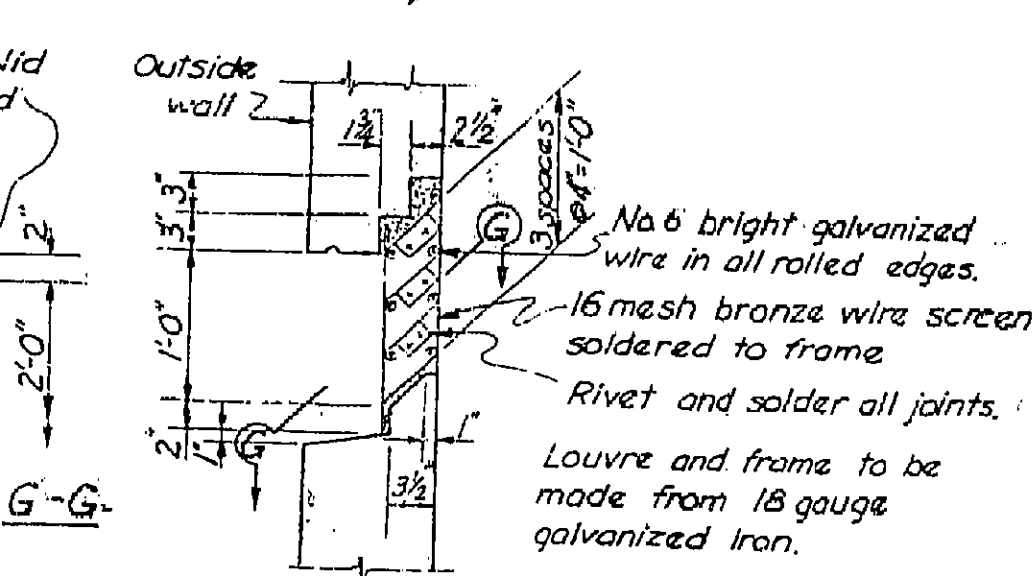
**DOOR FRAME**  
 Scale: 3/4" = 1'-0"



**HAND HOLE**



**LADDER RUNGS**  
 Scale: 3/4" = 1'-0"



**VERTICAL SECTION LOUVER**  
 Scale: 1" = 1'-0"

2 required

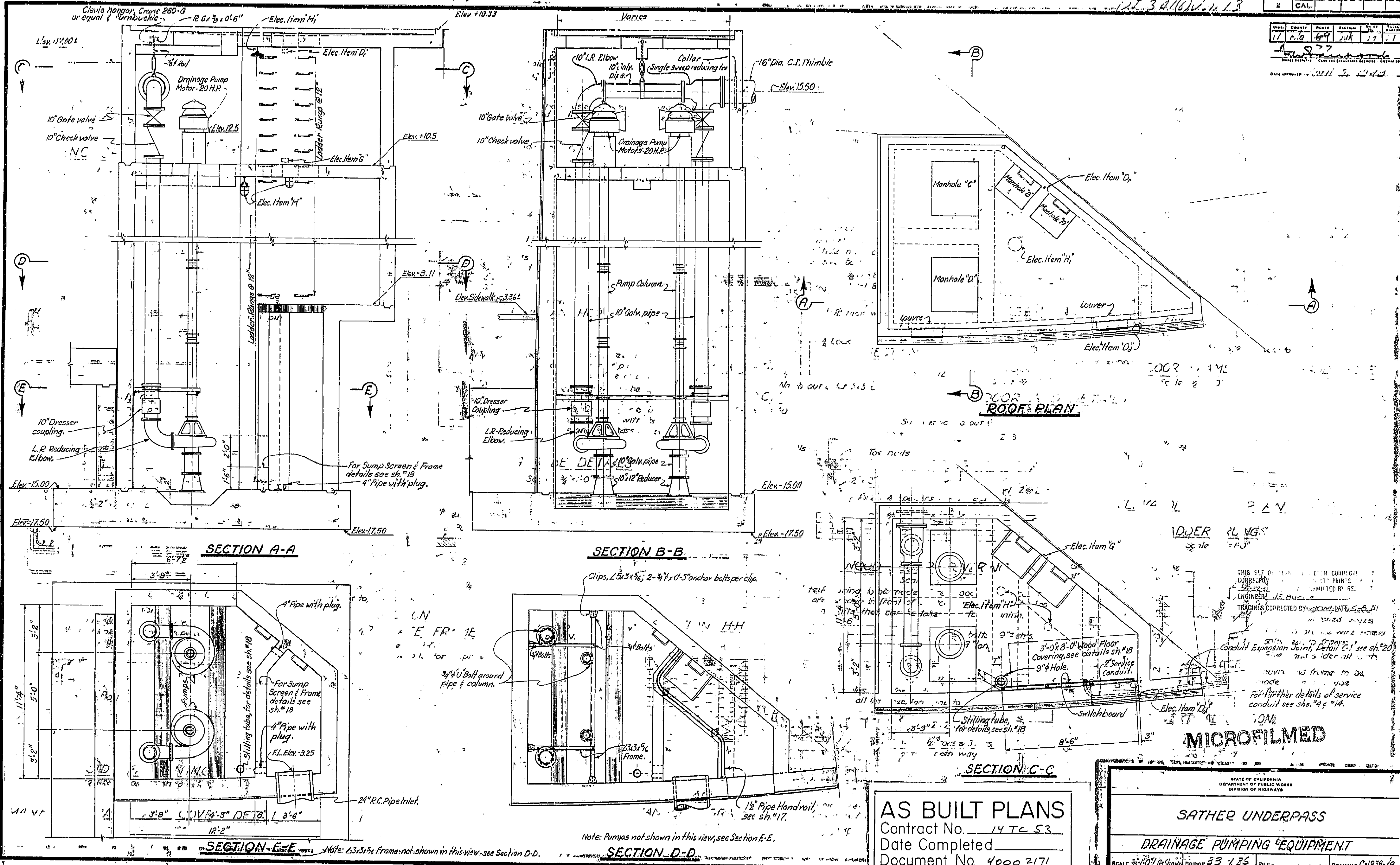
**MICROFILMED**  
 SATHER UNDERPASS & CLOROX OVERCROSSING  
 PUMP HOUSE DETAILS  
 SCALE: As Shown BRIDGE 33-126 FILE DRAWING C-12-48

**AS BUILT PLANS**  
 Contract No. 14 TC 53  
 Date Completed  
 Document No. 400 2171

I HEREBY CERTIFY THAT THIS IS A TRUE AND ACCURATE COPY OF THE ABOVE DOCUMENT TAKEN UNDER MY DIRECTION AND CONTROL ON THIS DATE IN SACRAMENTO, CALIFORNIA PURSUANT TO AUTHORIZATION BY THE DIRECTOR OF PUBLIC WORKS.  
 DATE: SIGNATURE: TITLE:

BRIDGE DEPARTMENT

DESIGNER	BY	DATE
CHECKED	BY	DATE
APPROVED	BY	DATE



BRIDGE DEPARTMENT

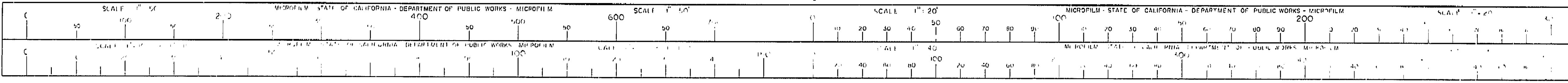
DATE	BY	CHK	APP	REV
12.3.11	116	116	116	116

QUANTITIES	BY	DATE
11.11.11	116	116

**AS BUILT PLANS**  
 Contract No. 14TC53  
 Date Completed  
 Document No. 40002171

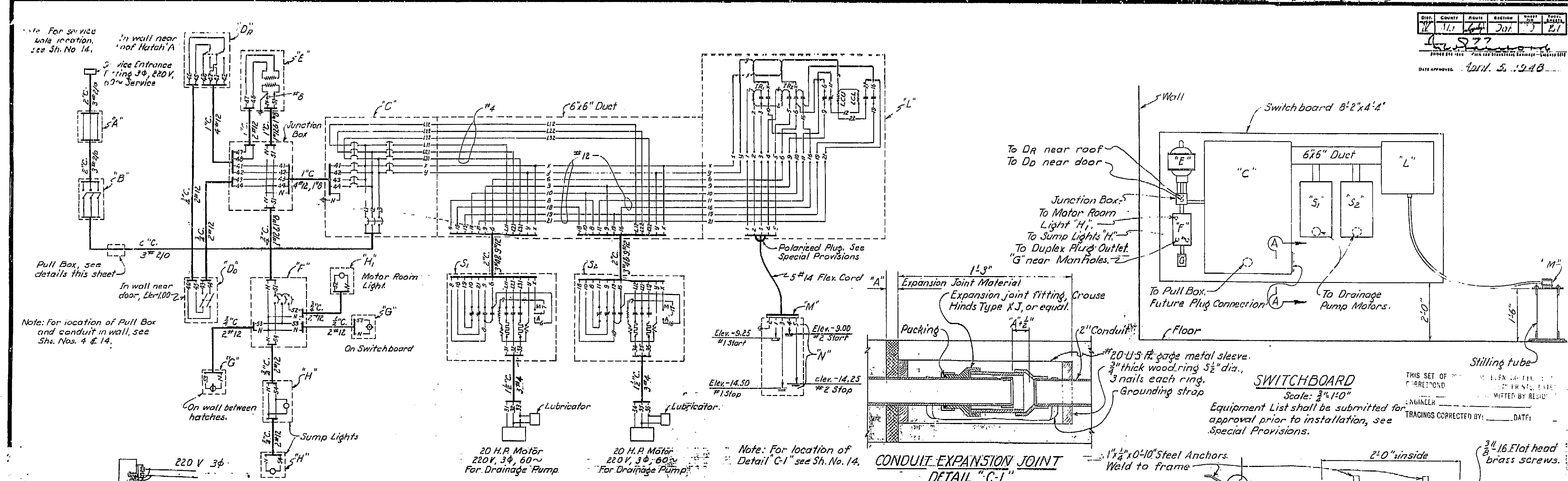
STATE OF CALIFORNIA  
 DEPARTMENT OF PUBLIC WORKS  
 DIVISION OF HIGHWAYS  
**SATHER UNDERPASS**  
**DRAINAGE PUMPING EQUIPMENT**  
 SCALE 3/4" = 1'-0" DRAWING C-1938-49

I HEREBY CERTIFY THAT THIS IS A TRUE AND ACCURATE COPY OF THE ABOVE DOCUMENT TAKEN UNDER MY DIRECTION AND CONTROL ON THIS DATE IN SAN FRANCISCO, CALIFORNIA PURSUANT TO AUTHORIZATION BY THE DIRECTOR OF PUBLIC WORKS.  
 DATE \_\_\_\_\_ SIGNATURE \_\_\_\_\_ TITLE \_\_\_\_\_

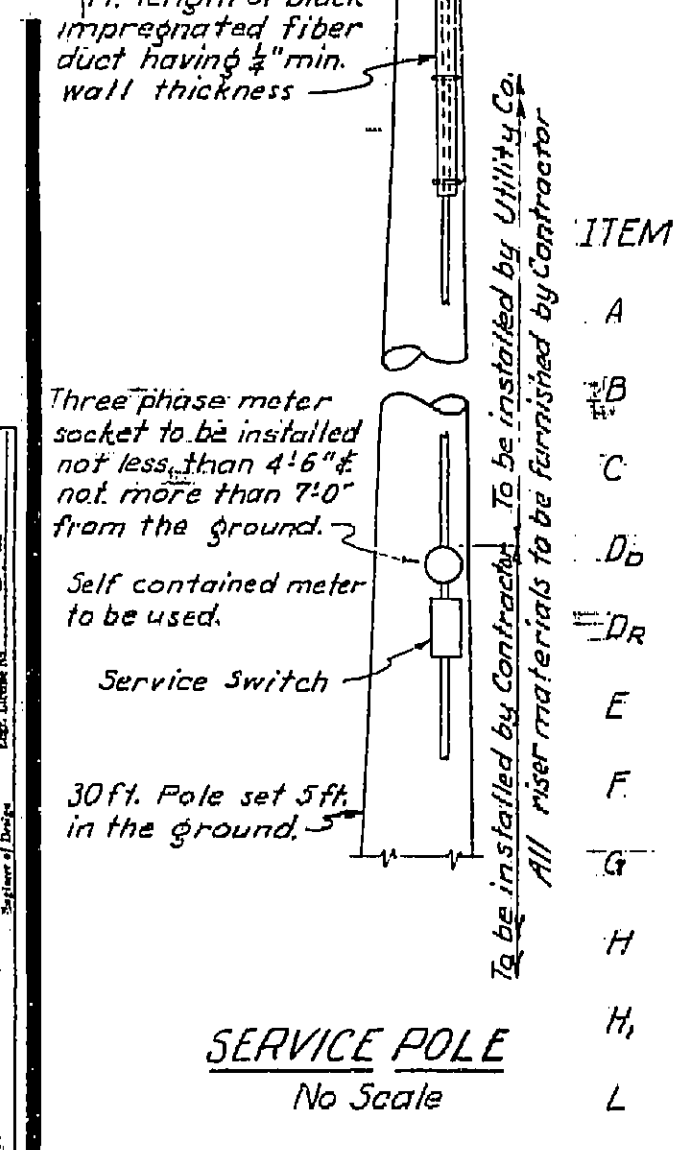


Dist.	County	Route	Section	Sheet	Total
24	16	164	201	21	21

DATE APPROVED: April 5, 1948



DEPARTMENT

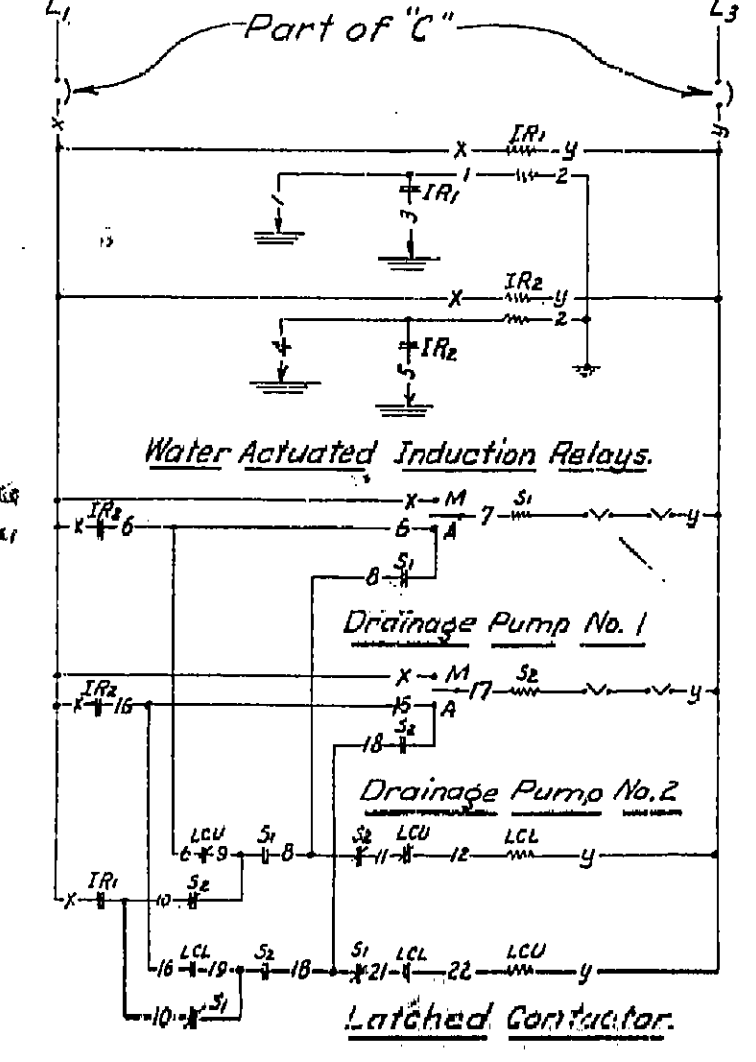


ITEM	DESCRIPTION
A	Meter Socket
B	Disconnect Switch, Type C.
C	Convertible distribution panelboard.
D <sub>1</sub>	House lights door switch.
D <sub>2</sub>	House lights roof switch.
E	House lighting transformer.
F	House lights switch on switchboard.
G	Duplex plug outlets.
H	Sump lights.
H <sub>1</sub>	Motor room light.
L	Alternator pump control panel.
M	Electrode holder.
N	Pump control electrodes.
S <sub>1</sub> & S <sub>2</sub>	A.C. Magnetic starters.

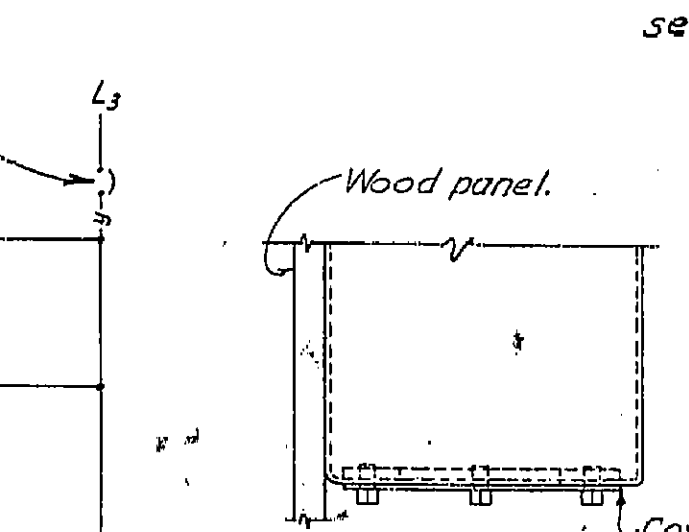
For further description of Equipment see Special Provisions.

WIRING DIAGRAM No Scale

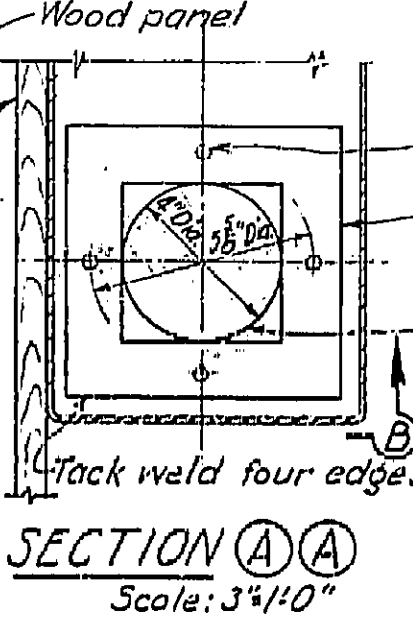
LEGEND	
⊥	Electrode.
⊥	Ground.
IR	Induction Relay.
S	Starter.
—	Thermal Over-load Relay.
LCU	Latched Contactor (Un-latched).
LCL	Latched Contactor (Latched).
—	Normally Open Contact.
—	Normally Closed Contact.
—	Air Circuit Breaker.



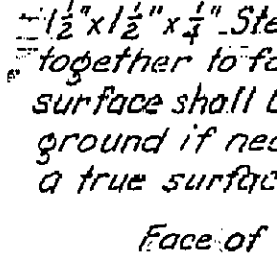
CONDUIT EXPANSION JOINT DETAIL "C-1" No Scale



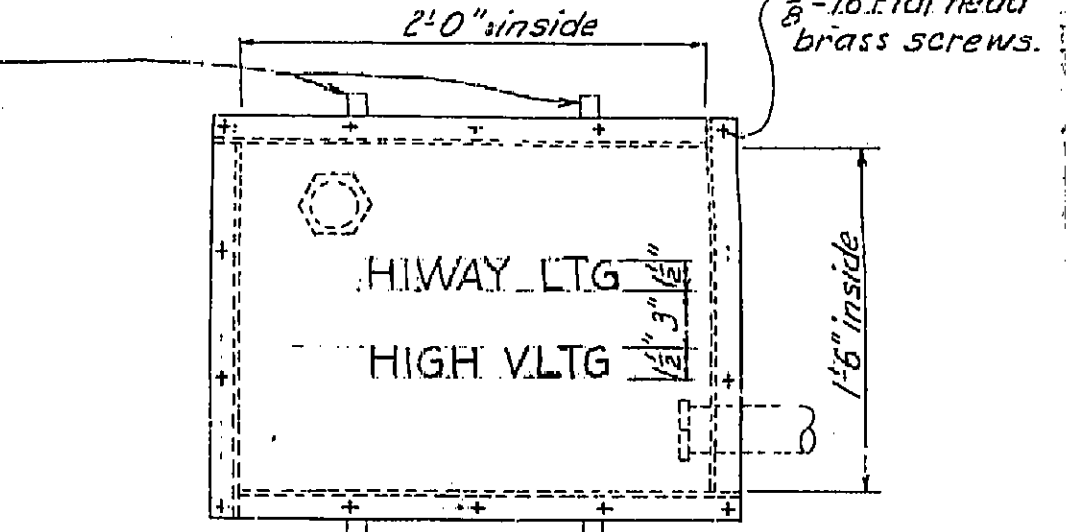
SECTION (B-B) Scale: 3/4"=1'-0"



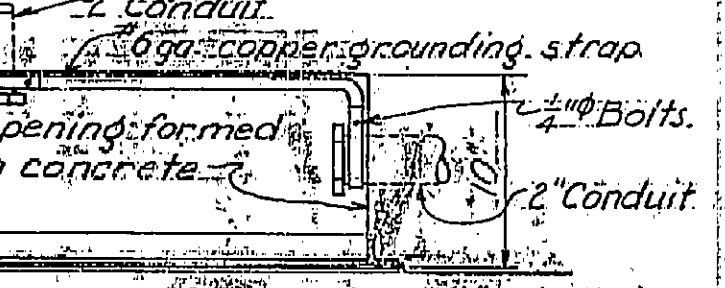
END VIEW



SWITCHBOARD Scale: 3/4"=1'-0"



ELEVATION



PLAN

PULL BOX Scale: 7/8"=1'-0"

**MICROFILMED**

STATE OF CALIFORNIA  
DEPARTMENT OF PUBLIC WORKS  
DIVISION OF HIGHWAYS

SATHER UNDERPASS  
AND CLOROX OVERCROSSING  
PUMPHOUSE ELECTRICAL DETAILS

SCALE As Noted. BRIDGE 33-196 FILE DRAWING C-193B-20

AS BUILT PLANS  
Contract No. 14TC53  
Date Completed  
Document No. 4000 2171

I HEREBY CERTIFY THAT THIS IS A TRUE AND ACCURATE COPY OF THE ARCH. DOCUMENT TAKEN UNDER MY DIRECTION AND CONTROL ON THIS DATE IN SACRAMENTO, CALIFORNIA PURSUANT TO AUTHORIZATION BY THE DIRECTOR OF PUBLIC WORKS.

DATE SIGNATURE TITLE

