

## Detterman, Mark, Env. Health

---

**From:** Nushwat, Matthew [MMN8@pge.com]  
**Sent:** Monday, March 30, 2015 4:19 PM  
**To:** Detterman, Mark, Env. Health; mjohnson@waterboards.ca.gov; 'eva.chu@acgov.org'; 'henry.wong@dtsc.ca.gov'  
**Subject:** D-257 (Emeryville) Land Use Restrictions Notification  
**Attachments:** D-257\_CC-179\_L-105A\_AWH\_EnvProjAssess\_rev0\_150327.pdf

Ms. Eva Chu  
Alameda County LOP  
Alameda County Environmental Health  
1131 Harbor Bay Parkway Alameda, CA 94502-6577  
(510) 567-6762

Mr. Mark Detterman  
Alameda County LOP  
Alameda County Environmental Health  
1131 Harbor Bay Parkway Alameda, CA 94502-6577  
(510) 567-6876

Mark Johnson, Program Manager  
San Francisco Bay Regional Water Quality Control Board  
1515 Clay St., Suite 1400  
Oakland, CA 94612  
(510) 622-2493

Henry Wong  
Project Manager  
Department of Toxic Substances Control  
700 Heinz Avenue  
Berkeley, CA 94710  
(510) 540-3770

Hello Ms. Chu, Mr. Detterman, Mr. Johnson, Mr. Wong,

Subject: PG&E Notification of Pending Excavation Nearby Land Use Restrictions sites, Project D-257, digs location - Powell St. and Hollis St., Emeryville, CA.

### Reference Case Numbers:

No. T06019745736, TOSCO 76 #3737/Chevron, 1400 Powell St., Emeryville, CA.  
No. SL0600191921, former Industrial Hard Chrome, 5701 Hollis St., Emeryville, CA.  
No. T06019738449, Becker Property, 1300 Powell St., Emeryville, CA.  
No. 01360057, Emeryville Mound Parcel, 59th St. and Horton St., Emeryville, CA.  
No. T0600101903, Fordham Property, 5515 Doyle St., Emeryville, CA.  
No. SL20235853, Westinghouse Electric-Parcel, 4899 Peladeau, Emeryville, CA.  
No. T06019727624, Garza & Associates, 1240 Powell St., Emeryville, CA.  
No. T0600102100, Thoroughbred Bldg., 1397 55TH St., Emeryville, CA.

PG&E is notifying Alameda County LOP, SF Bay Region RWQCB and DTSC of pending excavations (access to pipeline L-105A) nearby Land Use Deed Restrictions, Potential Deed Restrictions, Future Land Use Restrictions and Post Closure Site Management Requirements Site(s).

A search of the Environmental databases in advance of the excavation shows that digs location D-257 is about:

100 feet northwest of Post Closure Management Requirements site, T06019745736;

350 feet south of Deed Restrictions site, SL0600191921;  
550 feet east of Deed Restrictions site, T06019738449;  
750 feet northwest of Future Land Use Restrictions site, 01360057;  
850 feet southwest of Post Closure Management Requirements site, T0600101903;  
950 feet northwest of Deed Restrictions site, SL20235853;  
950 feet northwest of Post Closure Management Requirements site, T06019727624;  
1,000 feet southeast of Post Closure Management Requirements site, T0600102100.

PG&E's digs location(s) is not contiguous to, or otherwise similarly situated with respect to the Land Use Restriction site(s).

PG&E's pending excavation at the digs location(s) should not impact the Land Use Restriction site(s).

Please indicate if additional information is needed; and, if you have any issues or concerns. PG&E appreciates Alameda County LOP, SF Bay Region RWQCB and DTSC's consideration and assistance in this matter.

Regards,

Matthew Nushwat  
PG&E Environmental Operations  
6111 Bollinger Canyon Road  
San Ramon, CA 94583  
(925) 244-3664  
Cell: (925)-207-4681

PG&E is committed to protecting our customers' privacy.  
To learn more, please visit <http://www.pge.com/about/company/privacy/customer/>

## Environmental Project Assessment

The following state agency databases have been queried for active and inactive groundwater release and soil contamination sites within approximately 1,000 feet of each proposed excavation:

- California Environmental Protection Agency (Cal/EPA) State Water Resources Control Board GeoTracker database for sites that impact groundwater, especially those that require groundwater cleanup (Underground Storage Tanks [USTs], United States Department of Defense, Site Cleanup Program), as well as permitted facilities such as operating USTs and land disposal sites.
- California Environmental Protection Agency Department of Toxic Substances Control (DTSC) EnviroStor Data Management System that provides information on hazardous-waste-permitted and corrective-action facilities, as well as existing site cleanup information and corrective actions that are planned, being conducted, or have been completed under DTSC oversight.

Pacific Gas and Electric Company's (PG&E) E-Screen tool within the PG&E Intranet GIS Map Server was queried for the potential presence of naturally occurring asbestos (NOA) at each proposed dig location. A summary of potential site contamination and the estimated depth to groundwater at each dig location is provided in this table. Additional database information is provided in the attached GeoTracker/EnviroStor Review Summary Table.

It should be noted that the GeoTracker and EnviroStor databases do not include all contaminated sites throughout California. Additionally, locations shown in GeoTracker and EnviroStor sometimes differ from site-specific maps or remedial actions by several hundred feet; distances and directions provided in this review should be considered approximate. Because contaminated soil and groundwater may be encountered on project sites, routine inspections of digging and trenching operations should be performed to look for the potential presence of contamination. Soil discoloration, odors, abandoned underground tanks or pipes, and buried debris are signs of potential contamination.

**Project: D-257 (CC-179) (Emeryville)**

**Location: L-105A MP 39.94**

**Date: 3/27/2015**

**Reviewer: Kelly Stynes/BAO - CH2M HILL**

Dig Location	Potential Presence of NOA	Groundwater Depth (feet bgs)	Contamination Summary	Comments
D-257 (CC-019)	No	1 - 15	<p>There are ten LUST sites, eleven Cleanup Program sites, four Voluntary Cleanup sites, two State Response sites and one Evaluation site located within 1,000 feet of this location.</p> <p>The TOSCO 76 #3737 / CHEVRON (T06019745736) LUST site is located ~ 100 feet away. Maximum groundwater concentrations included: benzene – 310 micrograms/Liter (µg/L); methyl tert butyl ether (MTBE) – 140 µg/L; tert butyl alcohol (TBA) – 3,400 µg/L; toluene – 7 µg/L; ethylbenzene – 14 µg/L; xylenes – 5.2 µg/L; total petroleum hydrocarbons (TPH) diesel – 710 µg/L; and TPH gasoline – 1,700 µg/L. Maximum soil concentrations included: benzene – 1.3 milligrams/kilogram (mg/kg). Site was closed with <b>POST CLOSURE SITE MANAGEMENT REQUIREMENTS</b> in 2014. See Note 1</p> <p>The API EMERYVILLE PARKSIDE - PCB (T10000004505) Cleanup Program site is located ~ 100 feet away. Soil samples collected after the initial cleanup included maximum concentrations at polychlorinated biphenyls (PCB) - 11,000 mg/kg. Additional remediation and investigation is planned.</p> <p>The BALAAM BROS PROPERTY (T06019733360) Cleanup Program site is located ~ 300 feet away. Maximum soil concentrations included: TPH gasoline - 350 mg/kg; TPH</p>	<p>Based on the available information, there is a potential for soil and/or groundwater to contain TPHs, MTBE, VOCs, semi-VOCs, PCBs, chlorinated solvents, heavy metals, and/or dioxins and furans.</p> <p><b>1. POST CLOSURE SITE MANAGEMENT REQUIREMENTS</b>  NOTIFY PRIOR TO DEVELOPMENT  PERFORM H&amp;S PLAN PRIOR TO SUBSURFACE WORK  Contact Information  MARK DETTERMAN/ALAMEDA COUNTY LOP  <a href="mailto:mark.detterman@acgov.org">mark.detterman@acgov.org</a>  (510) 567-6876</p>

Dig Location	Potential Presence of NOA	Groundwater Depth (feet bgs)	Contamination Summary	Comments
			<p>diesel – 3,000 mg/kg; TPH motor oil 1,100 mg/kg; and benzene – 3.5 mg/kg. Maximum groundwater concentrations included: TPH gasoline - 56 µg/L; TPH diesel – 340 µg/L; and benzene – 11 µg/L. Site was closed with no further action in 2003.</p> <p>The FORMER INDUSTRIAL HARD CHROME (SL0600191921), the INDUSTRIAL HARD CHROME (01340122) Evaluation site, and the 5701 Hollis Street (60001845) all address the same property located ~ 350 feet away. Maximum remaining hexavalent chromium concentrations in the soil and groundwater included 130 mg/kg, and 0.024 µg/L, respectively. Site was closed with <b>DEED RESTRICTIONS</b> in 2006. See Note 2.</p> <p>The Parkside Emeryville (60001643) Cleanup Program site is located ~ 350 feet away. Maximum groundwater concentrations included: TPH gasoline – 49 µg/L; acetone – 50 µg/L; chloroform – 11 µg/L; and toluene – 0.63 µg/L. Maximum soil concentrations included: arsenic – 8.3 mg/kg; barium – 330 mg/kg; chromium – 110 mg/kg; lead – 730 mg/kg; TPH diesel – 540 mg/kg; TPH motor oil – 140 mg/kg; TPH gasoline – 380 mg/kg; and tetrachloroethene (PCE) – 10 mg/kg. Site remains open.</p> <p>The Alders (60001261) is located ~ 350 feet away. Maximum soil concentrations included: TPH gasoline – 580 mg/kg; TPH diesel – 13,000 mg/kg; TPH motor oil – 5,500, and lead – 14 mg/kg. Maximum groundwater concentrations included: TPH diesel – 97 µg/L and TPH gasoline 63 µg/L. Site was closed with further action in 2011.</p> <p>The EMERYVILLE INDUSTRIAL COURT Cleanup Program site is located ~ 350 feet away. Maximum soil concentrations included: TPH gasoline – 2,100 mg/kg; TPH diesel – 250 mg/kg; TPH motor oil – 280 mg/kg; oil and grease – 52 mg/kg; and heavy metals – 99 mg/kg. Maximum groundwater concentrations included – TPH gasoline – 2,500 µg/L; TPH diesel – 240 µg/L; TPH motor oil – 280 µg/L; benzene – 140 µg/L; ethylbenzene – 100 µg/L ; heavy metals – 400 µg/L; and MTBE – 51 µg/L. The site was closed with no further action in 2012.</p> <p>The HYDRAULIC ELECTRO SERVICE (T0600101109) LUST site is located ~ 450 feet away. Maximum soil concentrations included: TPH motor oil – 224 mg/kg; and heavy metals - 15 mg/kg. Maximum groundwater concentrations included – TPH gasoline – 63 µg/L; TPH diesel – 97 µg/L; TPH motor oil – 51 µg/L; and heavy metals – 49 µg/L. The site was closed with no further action in 2011.</p> <p>The SCHWABACHER / FREY (T06019750590) LUST site is located ~ 500 feet away and has limited available information. This site remains open.</p> <p>The BECKER PROPERTY (T06019738449) Cleanup Program site is located ~ 550 feet away. Maximum soil concentrations included: TPH diesel – 820 mg/kg and TPH motor oil – 740 mg/kg. Maximum groundwater included: TPH diesel – 120 µg/L. The 2003 closure letter indicates that institutional controls and deed restrictions were planned. The geotracker file does not provide a <b>DEED RESTRICTION</b>. See Note 3.</p> <p>The API EMERYVILLE PARKSIDE UST (T10000006444) LUST site is located ~ 600 feet</p>	<p><b>2. DEED RESTRICTION</b>  No excavation work within Areas of contamination (see screen shot)  No disturbance of the cap without prior permission  No extraction of groundwater  Contact Information:  MARK JOHNSON  mjohnson@waterboards.ca.gov  SAN FRANCISCO BAY RWQCB (REGION 2)  (510) 622-2493</p> <p><b>3. POTENTIAL DEED RESTRICTION</b>  Vapor barriers (membranes) underlie the entire property. Installation of utilities shall not penetrate these barriers.  <b>Contact Information</b>  Case Worker: Eva Chu  ALAMEDA COUNTY LOP  (510) 567-6762</p> <p><b>4. FUTURE LAND USE RESTRICTIONS</b>  RESTRICTIONS - TBD  Contact Information  HENRY WONG/DTSC - CLEANUP PROGRAM - BERKELEY OFFICE  <a href="mailto:henry.wong@dtsc.ca.gov">henry.wong@dtsc.ca.gov</a>  (510) 540-3770</p>

Dig Location	Potential Presence of NOA	Groundwater Depth (feet bgs)	Contamination Summary	Comments
			<p>away. Maximum soil concentrations included: TPH diesel – 200 mg/kg; and TPH motor oil – 360 mg/kg. Groundwater samples were not collected. Site remains open. The WESTINGHOUSE ELECTRIC - PARCEL 1 (T06019701198) Cleanup Program site is located ~ 600 feet away. Maximum soil concentrations included: TPH diesel – 1,430 mg/kg; TPH motor oil – 1,260 mg/kg; lead – 12.9 mg/kg; barium – 217 mg/kg; and PCBs &gt; 50 mg/kg. Site remains open and additional investigation/ remediation is planned.</p> <p>The PAPERMILL RESIDENTIAL (T10000000432) Cleanup Program site is located ~ 650 feet away and has limited available information. This site remains open.</p> <p>The MICHEL AND PELTON (SLT2O06874) Cleanup Program site is located ~700 feet away and has limited available information. This site remains open.</p> <p>The Emeryville Mound Parcel (01360057) Voluntary Cleanup site is located ~750 feet away. Environmental investigations since the early 1980s have identified PCBs, volatile organic compounds (VOCs), semi-VOCs, TPHs, dioxins and furans, and metals in soil, soil vapor, and groundwater at the Site, but data is unavailable. Maximum PCB concentration in shallow (&lt;5 feet bgs) soils was 37,000 mg/kg. A design plan has been submitted an approved to cap the impacted soils. File states that <b>LAND USE RESTRICTIONS</b> are anticipated in 2017. (See Note 4.)</p> <p>The FORDHAM PROPERTY (T0600101903) LUST site is located ~ 850 feet away. Maximum soil concentrations included: TPH gasoline – 5,200 mg/kg; TPH diesel – 580 mg/kg; benzene – 24 mg/kg; toluene – 180 mg/kg; ethylbenzene - 120 mg/kg; xylenes – 590 mg/kg; and heavy metals – 11 mg/kg. Maximum groundwater concentrations included: : TPH gasoline – 830 µg/L; TPH diesel – 730 µg/L; benzene – 24 µg/L; toluene – 1.3 µg/L; ethylbenzene – 48 µg/L; and xylenes – 20 µg/L. This site was closed with <b>POST CLOSURE SITE MANAGEMENT REQUIREMENTS</b> in 2011. (See Note 5.</p> <p>The CHEVRON #20-6265 (SLT2O07076) Cleanup Program site is located ~850 feet away. Maximum soil concentrations included: TPH diesel – 3,500 mg/kg, TPH gasoline – 1,900 mg/kg, benzene – 0.5 mg/kg, and trichloroethene (TCE) – 15 mg/kg. Maximum groundwater concentrations included: TPH gasoline – 300 µg/L; benzene – 0.6 µg/L; PCE – 420 µg/L; TCE – 34 µg/L; cis 1,2 dichloroethylene (DCE) – 100 µg/L and vinyl chloride – 4 µg/L. Site closure has been requested, but site remains open.</p> <p>The WESTINGHOUSE ELECTRIC - PARCEL 4 (SL20235853) Cleanup Program site is located ~ 950 feet away. A slurry wall was constructed in the NW corner in 1985 around areas containing over 50 mg/kg PCBs. A cap over the enclosed PCB contamination was constructed. Additional site history and data were unavailable.</p> <p>Details of the <b>DEED RESTRICTION</b> were not available. See Note 6.</p> <p>The HSP Property (60001876) State Response site is located ~900 feet away. Maximum soil concentrations included: TPH diesel – 2.6 mg/kg; TPH motor oil – 11 mg/kg; arsenic – 120 mg/kg; and lead – 6.6 mg/kg. Site was closed with further action in 2013.</p>	<p><b>5. POST CLOSURE SITE MANAGEMENT REQUIREMENTS</b>  NO EXCAVATION OF CONTAMINATED SOILS WITHOUT AGENCY REVIEW AND APPROVAL  NOTIFY PRIOR TO SUBSURFACE WORK  PERFORM H&amp;S PLAN PRIOR TO SUBSURFACE WORK  CONTACT INFORMATION  MARK DETTERMAN/ ALAMEDA COUNTY LOP  <a href="mailto:mark.detterman@acgov.org">mark.detterman@acgov.org</a>  (510) 567-6876</p> <p><b>6. DEED RESTRICTION</b>  No information available.  CONTACT INFORMATION  MARK DETTERMAN/ ALAMEDA COUNTY LOP  <a href="mailto:mark.detterman@acgov.org">mark.detterman@acgov.org</a>  (510) 567-6876</p> <p><b>7. POST CLOSURE SITE MANAGEMENT REQUIREMENTS</b>  PERFORM H&amp;S PLAN PRIOR TO SUBSURFACE WORK  Contact Information  MARK DETTERMAN/ALAMEDA COUNTY LOP  <a href="mailto:mark.detterman@acgov.org">mark.detterman@acgov.org</a>  (510) 567-6876</p> <p><b>8. POST CLOSURE SITE MANAGEMENT REQUIREMENTS</b>  NOTIFY PRIOR TO DEVELOPMENT  PERFORM H&amp;S PLAN PRIOR TO SUBSURFACE WORK  Contact Information  MARK DETTERMAN/ALAMEDA COUNTY LOP  <a href="mailto:mark.detterman@acgov.org">mark.detterman@acgov.org</a>  (510) 567-6876</p>

Dig Location	Potential Presence of NOA	Groundwater Depth (feet bgs)	Contamination Summary	Comments
			<p>The GARZA &amp; ASSOCIATES (T06019727624) LUST site is located ~ 950 feet away. Groundwater COCs were reported as not detected in the closure report. Site was closed with <b>POST CLOSURE SITE MANAGEMENT REQUIREMENTS</b> in 2013. See Note 7.</p> <p>The Marchant/Whitney (60001628) Voluntary Cleanup Program site is located ~ 950 feet away. Maximum groundwater concentrations included: TCE – 110,000 µg/L; cis 1,2 DCE – 11,000 µg/L; trans 1,2 DCE – 2,100 µg/L; vinyl chloride – 7,900 µg/L. Soil analytical data was not available. Site remains open and in active remediation.</p> <p>The THOROUGHbred BUILDING (T0600102100) LUST site is located ~1,000 feet away. Maximum soil concentrations included: TPH kerosene – 4,400 mg/kg; ethylbenzene – 5.6 mg/kg; and xylenes – 3.1 mg/kg. Groundwater concentrations were reportedly non-detect. Site was closed with <b>POST CLOSURE SITE MANAGEMENT REQUIREMENTS</b> in 2011. See Note 8.</p> <p>The CONSTRUCTION SERVICES (T06019798696) LUST site, the CLEMENTINA LTD (T0600101201) LUST site, SIEGAL &amp; STRAIN ARCHITECT (T0600191823) LUST site, and the HOLLIS STREET PROJECT (T0600100710) LUST site are located between 550 – 1,000 feet away. These sites have limited information and have been closed with no further action.</p>	

**Notes:**

µg/L = micrograms/Liter

bgs = Below Ground Surface

DCE = dichlorethylene

mg/kg = milligrams/kilogram

MTBE = methyl tert butyl ether

NOA = Naturally Occurring Asbestos

PCBs = polychlorinated biphenyls\

PCE = tetrachloroethene

TBA = tert butyl alcohol

TCE = trichloroethene

TPH = total petroleum hydrocarbons

VOCs = volatile organic compounds

## GeoTracker / EnviroStor Review Summary

Project: D-257 (CC-179) (Emeryville)

Location: L-105A MP 39.94

Date: 3/27/2015

Reviewer: Kelly Stynes/BAO - CH2M HILL

Dig Location	GeoTracker or EnviroStor Site Name	Distance and Direction <i>from</i> Dig Location	Estimated Depth To Groundwater at Site (ft bgs)	Groundwater Flow Direction	Site Contamination Summary	Link to Site Information	Comments and Notes
D-257 (CC-179)  <i>Powell St and Hollis St, Emeryville, CA</i>  37.839513 -122.289183	TOSCO 76 #3737 / CHEVRON (T06019745736) 1400 POWELL EMERYVILLE, CA 94608  LUST Cleanup Site  Cleanup Status: Completed - Case Closed RB Case #: NA Loc Case #: RO0000067	~100 feet northwest	4 – 8	West- southwest	Site is an active service station with former and existing USTs. Maximum groundwater concentrations reported in the 2014 Case Closure Summary included: benzene – 310 micrograms/Liter (µg/L); methyl tert butyl ether (MTBE) – 140 µg/L; tert butyl alcohol (TBA) – 3,400 µg/L; toluene – 7 µg/L; ethylbenzene – 14 µg/L; xylenes – 5.2 µg/L; total petroleum hydrocarbons (TPH) diesel – 710 µg/L; and TPH gasoline – 1,700 µg/L. Maximum soil concentrations listed in the 2013 Request for Closure included: benzene – 1.3 milligrams/kilogram (mg/kg). Site was closed with <b>POST CLOSURE SITE MANAGEMENT REQUIREMENTS</b> in 2014.	<a href="http://geotracker.waterboards.ca.gov/profile_report.asp?global_id=T06019745736">http://geotracker.waterboards.ca.gov/profile_report.asp?global_id=T06019745736</a>	<b>POST CLOSURE SITE MANAGEMENT REQUIREMENTS</b> NOTIFY PRIOR TO DEVELOPMENT PERFORM H&S PLAN PRIOR TO SUBSURFACE WORK Contact Information MARK DETTERMAN/ALAMEDA COUNTY LOP <a href="mailto:mark.detterman@acgov.org">mark.detterman@acgov.org</a> (510) 567-6876  Cleanup Status History  7/24/2013 Open - Eligible for Closure 8/30/2005 Open - Site Assessment 5/7/1999 Open - Site Assessment 5/7/1999 Open - Case Begin Date

Dig Location	GeoTracker or EnviroStor Site Name	Distance and Direction <u>from</u> Dig Location	Estimated Depth To Groundwater at Site (ft bgs)	Groundwater Flow Direction	Site Contamination Summary	Link to Site Information	Comments and Notes
	API EMERYVILLE PARKSIDE - PCB (T10000004505) 5750-5780 HOLLIS ST, EMERYVILLE, CA 94608 Cleanup Program Site Cleanup Status: Open - Site Assessment Loc Case #: RO0003108	~100 feet southeast	10 - 15	NA	In 2012, ~ 170 gallons of polychlorinated biphenyls (PCB) oil was released onto a warehouse floor. Soil samples collected after the initial cleanup included maximum concentrations at PCBs - 11,000 mg/kg. Additional remediation and investigation is planned.	<a href="http://geotracker.waterboards.ca.gov/profile_report.asp?global_id=T10000004505">http://geotracker.waterboards.ca.gov/profile_report.asp?global_id=T10000004505</a>	Cleanup Status History  10/10/2012 Open - Site Assessment 10/10/2012 Open - Case Begin Date
	BALAAM BROS PROPERTY (T06019733360) 1350 POWELL EMERYVILLE, CA 94608  Cleanup Program Site  Cleanup Status: Completed - Case Closed RB Case #: NA Loc Case #: RO0002506	~ 300 feet northeast	< 10	NA	Site is a former bulk oil storage facility with former USTs. Impacted soil was removed. Maximum soil concentrations reported after cleanup in the closure report included: TPH gasoline - 350 mg/kg; TPH diesel - 3,000 mg/kg; TPH motor oil 1,100 mg/kg; and benzene - 3.5 mg/kg. Maximum groundwater concentrations reported after cleanup in the closure report included: TPH gasoline - 56 µg/L; TPH diesel - 340 µg/L; and benzene - 11 µg/L. Site was closed with no further action in 2003.	<a href="http://geotracker.waterboards.ca.gov/profile_report.asp?global_id=T06019733360">http://geotracker.waterboards.ca.gov/profile_report.asp?global_id=T06019733360</a>	Cleanup Status History  2/21/2003 Completed - Case Closed 4/15/2002 Open - Case Begin Date

Dig Location	GeoTracker or EnviroStor Site Name	Distance and Direction <u>from</u> Dig Location	Estimated Depth To Groundwater at Site (ft bgs)	Groundwater Flow Direction	Site Contamination Summary	Link to Site Information	Comments and Notes
	<p>FORMER INDUSTRIAL HARD CHROME (SL0600191921) 5701 HOLLIS EMERYVILLE, CA</p> <p>Cleanup Program Site</p> <p>Cleanup Status: Completed - Case Closed RB Case #: 01S0602</p>	~350 feet south	4 - 9	West/north west	<p>Site is a former chrome plating facility. Hexavalent chromium was detected in soils and groundwater. Hexavalent chromium remains in some locations after remediation. These locations have been capped and deed restricted. Maximum remaining hexavalent chromium concentrations in the soil and groundwater at the site reported in the closure document are 130 mg/kg, and 0.024 µg/L, respectively. Site was closed with deed restrictions in 2006. Site is associated with Envirostor #01340122 below. Deed restricted area is located approximately 300 feet south of the excavation area (see screen shot).</p>	<a href="http://geotracker.waterboards.ca.gov/profile_report.asp?global_id=SL0600191921">http://geotracker.waterboards.ca.gov/profile_report.asp?global_id=SL0600191921</a>	<p><b>DEED RESTRICTION</b></p> <p>No excavation work within Areas of contamination (see screen shot) No disturbance of the cap without prior permission No extraction of groundwater</p> <p>Contact Information: MARK JOHNSON mjohnson@waterboards.ca.gov</p> <p>SAN FRANCISCO BAY RWQCB (REGION 2) (510) 622-2493</p> <p>Cleanup Status History 10/1/2006 Completed - Case Closed 6/6/2003 Open - Case Begin Date</p>
	<p>INDUSTRIAL HARD CHROME (01340122) 5701 HOLLIS STREET EMERYVILLE, CA 94608</p> <p>Site Type: Evaluation Status: Refer: RWQCB</p>	~350 feet south	4 - 9	West/north west	<p>Site was screened and recommended to the Water Board for action.</p>	<a href="http://www.envirostor.dtsc.ca.gov/public/profile_report.asp?global_id=01340122">http://www.envirostor.dtsc.ca.gov/public/profile_report.asp?global_id=01340122</a>	<p>Cleanup Status History</p> <p>REFER: RWQCB AS OF 9/15/2006</p>

Dig Location	GeoTracker or EnviroStor Site Name	Distance and Direction <u>from</u> Dig Location	Estimated Depth To Groundwater at Site (ft bgs)	Groundwater Flow Direction	Site Contamination Summary	Link to Site Information	Comments and Notes
	Parkside Emeryville (60001643) 5780 Hollis St. & 1255 Powell Street Emeryville, CA 94608  Site Type: Voluntary Cleanup Status: Active	~350 feet southeast	8	NA	Site is a former UST site. Maximum groundwater concentrations reported in the most recent report (2006) included: TPH gasoline – 49 µg/L; acetone – 50 µg/L; chloroform – 11 µg/L; and toluene – 0.63 µg/L. Maximum soil concentrations reported in the most recent event (2006) included: arsenic – 8.3 mg/kg; barium – 330 mg/kg; chromium – 110 mg/kg; lead – 730 mg/kg; TPH diesel – 540 mg/kg; TPH motor oil – 140 mg/kg; TPH gasoline – 380 mg/kg; and tetrachloroethene (PCE) – 10 mg/kg. Site is listed as active and a voluntary cleanup/redevelopment plan has been submitted. Under the cleanup plan, contaminated soils will be removed and disposed of offsite.	<a href="http://www.envirostor.dtsc.ca.gov/public/profile_report.asp?global_id=60001643">http://www.envirostor.dtsc.ca.gov/public/profile_report.asp?global_id=60001643</a>	Cleanup Status History  ACTIVE AS OF 3/28/2012

Dig Location	GeoTracker or EnviroStor Site Name	Distance and Direction <u>from</u> Dig Location	Estimated Depth To Groundwater at Site (ft bgs)	Groundwater Flow Direction	Site Contamination Summary	Link to Site Information	Comments and Notes
	Alders (60001261) 5812 Hollis Street Emeryville, CA 94608  Site Type: Voluntary Cleanup Status: No Further Action	~350 feet north	5 - 8	Generally west	Site is the location of former USTs and a machine shop. Soils were excavated to address lead, TPH, MTBE, and VOC impacts in 2011. Maximum soil concentrations detected in confirmation samples included: TPH gasoline – 580 mg/kg; TPH diesel – 13,000 mg/kg; TPH motor oil – 5,500, and lead – 14 mg/kg. Maximum groundwater concentrations after cleanup included: TPH diesel – 97 µg/L and TPH gasoline 63 µg/L. Site was closed with no further action in 2011.	<a href="http://www.envirostor.dtsc.ca.gov/public/profile_report.asp?global_id=60001261">http://www.envirostor.dtsc.ca.gov/public/profile_report.asp?global_id=60001261</a>	Cleanup Status History  NO FURTHER ACTION AS OF 10/20/2011
	EMERYVILLE INDUSTRIAL COURT (SL0600195077) 5885 HOLLIS EMERYVILLE, CA 94608  Cleanup Program Site  Cleanup Status: Completed - Case Closed RB Case #: NA Loc Case #: RO0002621	~ 350 feet northwest	6 - 12	West	Site had former gasoline and waste oil USTs that were removed in the 1970s and 1990. Soil and groundwater were treated in 2006. Maximum soil concentrations reported in the closure documentation after cleanup included: TPH gasoline – 2,100 mg/kg; TPH diesel – 250 mg/kg; TPH motor oil – 280 mg/kg; oil and grease – 52 mg/kg; and heavy metals – 99 mg/kg. Maximum groundwater concentrations reported in the closure	<a href="http://geotracker.waiverboards.ca.gov/profile_report.asp?global_id=SL0600195077">http://geotracker.waiverboards.ca.gov/profile_report.asp?global_id=SL0600195077</a>	Cleanup Status History  4/30/2012 Completed - Case Closed 11/13/2008 Open - Site Assessment

Dig Location	GeoTracker or EnviroStor Site Name	Distance and Direction <u>from</u> Dig Location	Estimated Depth To Groundwater at Site (ft bgs)	Groundwater Flow Direction	Site Contamination Summary	Link to Site Information	Comments and Notes
					documentation after cleanup included – TPH gasoline – 2,500 µg/L; TPH diesel – 240 µg/L; TPH motor oil – 280 µg/L; benzene – 140 µg/L ; ethylbenzene – 100 µg/L ; heavy metals – 400 µg/L; and MTBE – 51 µg/L. The site was closed with no further action in 2012.		
	5701 Hollis Street (60001845) 5701 Hollis Street Emeryville, CA 94608 Site Type: State Response Status: Refer: 1248 Local Agency	~400 feet south	NA	NA	Site is associated with the Industrial Hard Chrome sites above. This portion of the Industrial Hard Chrome site was carved out under the Brownfields program.	<a href="http://www.envirostor.dtsc.ca.gov/public/profile_report.asp?global_id=60001845">http://www.envirostor.dtsc.ca.gov/public/profile_report.asp?global_id=60001845</a>	Cleanup Status History  REFER: 1248 LOCAL AGENCY AS OF 9/5/2012
	HYDRAULIC ELECTRO SERVICE (T0600101109) 5812 HOLLIS ST. Emeryville, CA 94608  LUST Cleanup Site  Cleanup Status: Completed - Case Closed RB Case #: 01-1206 Loc Case #: RO0000201	~450 feet north	4 – 7	West	Site had former gasoline and diesel USTs that were removed in 1989 and 2010. Maximum soil concentrations reported in the closure documentation after cleanup included: TPH motor oil – 224 mg/kg; and heavy metals - 15 mg/kg. Maximum groundwater concentrations reported in the closure documentation after cleanup included – TPH gasoline – 63 µg/L; TPH diesel – 97 µg/L; TPH motor oil – 51 µg/L; and heavy metals – 49	<a href="http://geotracker.waiverboards.ca.gov/profile_report.asp?global_id=T0600101109">http://geotracker.waiverboards.ca.gov/profile_report.asp?global_id=T0600101109</a>	Cleanup Status History  11/21/2011 Completed - Case Closed 6/17/1993 Open - Site Assessment 12/5/1989 Open - Case Begin Date

Dig Location	GeoTracker or EnviroStor Site Name	Distance and Direction <u>from</u> Dig Location	Estimated Depth To Groundwater at Site (ft bgs)	Groundwater Flow Direction	Site Contamination Summary	Link to Site Information	Comments and Notes
					µg/L. The site was closed with no further action in 2011.		
	SCHWABACHER / FREY (T06019750590) 5733 PELADEAU STREET EMERYVILLE, CA 94608 LUST Cleanup Site Cleanup Status: Open - Site Assessment RB Case #: NA Loc Case #: RO0002845	~500 feet southwest	NA	NA	Site is the location of a diesel UST that was discovered to be leaking in 1987. The geotracker file contains multiple documents requesting information, investigation and potential remedial action to address any impacts associated with the LUST. Site history and investigation data are unavailable.	<a href="http://geotracker.waterboards.ca.gov/profile_report.asp?global_id=T06019750590">http://geotracker.waterboards.ca.gov/profile_report.asp?global_id=T06019750590</a>	Cleanup Status History  10/1/2004 Open - Site Assessment 1/20/1987 Open - Case Begin Date
	BECKER PROPERTY (T06019738449) 1300 POWELL EMERYVILLE, CA 94608 ALAMEDA COUNTY CLEANUP PROGRAM SITE	~550 feet east	NA	NA	Site is a former bulk oil storage facility. Soil and groundwater were removed. Maximum soil concentrations after removal included: TPH diesel – 820 mg/kg and TPH motor oil – 740 mg/kg. Maximum groundwater concentrations after removal included: TPH diesel – 120 µg/L. Site was closed and redeveloped for residential use. The 2003 closure letter indicates that institutional controls and deed restrictions were planned. The geotracker file does not provide a <b>DEED RESTRICTION</b> .	<a href="http://geotracker.waterboards.ca.gov/profile_report.asp?global_id=T06019738449">http://geotracker.waterboards.ca.gov/profile_report.asp?global_id=T06019738449</a>	The 2003 closure letter indicates that institutional controls and deed restrictions were planned. <b>POTENTIAL DEED RESTRICTION</b> <ul style="list-style-type: none"><li>Vapor barriers (membranes) underlie the entire property. Installation of utilities shall not penetrate these barriers.</li></ul> <b>Contact Information</b> Case Worker: Eva Chu ALAMEDA COUNTY LOP (510) 567-6762  Cleanup Status History  2/21/2003 Completed - Case Closed 4/15/2002 Open - Case Begin Date

Dig Location	GeoTracker or EnviroStor Site Name	Distance and Direction <u>from</u> Dig Location	Estimated Depth To Groundwater at Site (ft bgs)	Groundwater Flow Direction	Site Contamination Summary	Link to Site Information	Comments and Notes
	CONSTRUCTION SERVICES (T06019798696) 1300 POWELL EMERYVILLE, CA 94608 ALAMEDA COUNTY CLEANUP PROGRAM SITE	~550 feet east	NA	NA	Site history and investigation data are unavailable. Geotracker does not list a potential contaminant of concern for this site. Site was closed with no further action in 1999.	<a href="http://geotracker.waterboards.ca.gov/profile_report.asp?global_id=T06019798696">http://geotracker.waterboards.ca.gov/profile_report.asp?global_id=T06019798696</a>	Cleanup Status History 11/29/1999 Open - Case Begin Date 11/29/1999 Completed - Case Closed
	API EMERYVILLE PARKSIDE UST (T10000006444) 1342 STANFORD AVENUE EMERYVILLE, CA 94608  LUST Cleanup Site  Cleanup Status: Open - Site Assessment Loc Case #: RO0003109	~600 feet southeast	5 - 8	NA	Site is the location of a former heating oil UST that was removed in 2012. Maximum soil concentrations listed in post excavation samples included: TPH diesel – 200 mg/kg; and TPH motor oil – 360 mg/kg. Groundwater samples were not collected. Additional investigation and/or remediation is planned. Site remains open.	<a href="http://geotracker.waterboards.ca.gov/profile_report.asp?global_id=T10000006444">http://geotracker.waterboards.ca.gov/profile_report.asp?global_id=T10000006444</a>	Cleanup Status History 10/11/2012 Open - Site Assessment 9/10/2012 Open - Case Begin Date
	WESTINGHOUSE ELECTRIC - PARCEL 1 (T06019701198) 5815-5899 PELADEAU EMERYVILLE, CA 94608  Cleanup Program Site  Cleanup Status: Open - Site Assessment RB Case #: NA Loc Case #:	~ 600 feet northwest	2 - 6	Altered by slurry wall	Site is a former transformer manufacturer. PCBs have been identified onsite and were reportedly disposed of onsite in a mound area. A slurry wall and cap were installed in 1985 to contain soils with concentrations exceeding 50 mg/kg PCBs. However, due to excavation constraints, PCBs do remain outside the capped area at	<a href="http://geotracker.waterboards.ca.gov/profile_report.asp?global_id=T06019701198">http://geotracker.waterboards.ca.gov/profile_report.asp?global_id=T06019701198</a>	Cleanup Status History 8/30/1993 Open - Site Assessment

Dig Location	GeoTracker or EnviroStor Site Name	Distance and Direction <u>from</u> Dig Location	Estimated Depth To Groundwater at Site (ft bgs)	Groundwater Flow Direction	Site Contamination Summary	Link to Site Information	Comments and Notes
	RO0002742				concentrations exceeding 50 mg/kg. Additionally, a gasoline UST was removed. Maximum soil concentrations reported in from the excavation pit included: TPH diesel – 1,430 mg/kg; TPH motor oil – 1,260 mg/kg; lead – 12.9 mg/kg; and barium – 217 mg/kg. Site remains open and additional investigation/ remediation is planned.		
	PAPERMILL RESIDENTIAL (T10000000432) 1255 POWELL EMERYVILLE, CA 94608/Cleanup Program Site Cleanup Status: Open - Site Assessment RB Case #: NA Loc Case #: RO0002989	~650 feet east	NA	NA	The site has been used for multiple purposes since 1947, including warehousing, light industrial, residential, and bordered rail lines. Two USTs have been installed, and removed, from the site. Soils have been investigated for VOCs, SVOCs, PCBs and metals, but data is unavailable.	<a href="http://geotracker.waterboards.ca.gov/profile_report.asp?global_id=T10000000432">http://geotracker.waterboards.ca.gov/profile_report.asp?global_id=T10000000432</a>	Cleanup Status History  2/13/2007 Open - Site Assessment 10/30/2002 Open - Site Assessment 10/30/2002 Open - Case Begin Date
	CLEMENTINA LTD (T0600101201) 5521 DOYLE Emeryville, CA 94608 LUST Cleanup Site Cleanup Status: Completed - Case Closed RB Case #: 01-1306 Loc Case #: RO0000930	~650 feet southwest	NA	NA	Site history and investigation data are unavailable. Geotracker lists the site COC as diesel in groundwater. The site was closed with further action in 1994.	<a href="http://geotracker.waterboards.ca.gov/profile_report.asp?global_id=T0600101201">http://geotracker.waterboards.ca.gov/profile_report.asp?global_id=T0600101201</a>	Cleanup Status History  11/4/1994 Completed - Case Closed 12/21/1992 Open - Case Begin Date

Dig Location	GeoTracker or EnviroStor Site Name	Distance and Direction <u>from</u> Dig Location	Estimated Depth To Groundwater at Site (ft bgs)	Groundwater Flow Direction	Site Contamination Summary	Link to Site Information	Comments and Notes
	MICHEL AND PELTON (SLT2006874) 5743 LANDREGAN ST EMERYVILLE, CA  Cleanup Program Site  Cleanup Status: Open - Inactive RB Case #: 01S0054	~700 feet southwest	NA	NA	Site history and investigation data are unavailable. Geotracker reports that the site is open and inactive. No COCs are listed in the geotracker file.	<a href="http://geotracker.waterboards.ca.gov/profile_report.asp?global_id=SLT2006874">http://geotracker.waterboards.ca.gov/profile_report.asp?global_id=SLT2006874</a>	Cleanup Status History  6/5/2009 Open - Inactive 3/8/2001 Open - Site Assessment 3/8/2001 Open - Case Begin Date
	Emeryville Mound Parcel (01360057) 59th Street and Horton Street EMERYVILLE, CA 94608  Site Type: Voluntary Cleanup Status: Active	~750 feet northwest	9 - 14	NA – slurry wall has been installed to restrict impacted groundwater flow from the site.	Westinghouse conducted operations on the Site that included maintenance and repair of electrical equipment such as transformers containing PCB fluids. Environmental investigations since the early 1980s have identified PCBs, volatile organic compounds (VOCs), semi-VOCs, TPHs, dioxins and furans, and metals in soil, soil vapor, and groundwater at the Site, but data is unavailable. Maximum PCB concentration in shallow (<5 feet bgs) soils was 37,000 mg/kg. A design plan has been submitted and approved to cap the impacted soils. File states that <b>LAND USE RESTRICTIONS</b> are anticipated in 2017.	<a href="http://www.envirostor.dtsc.ca.gov/public/profile_report.asp?global_id=01360057">http://www.envirostor.dtsc.ca.gov/public/profile_report.asp?global_id=01360057</a>	<b>FUTURE LAND USE RESTRICTIONS</b> RESTRICTIONS - TBD Contact Information HENRY WONG/DTSC - CLEANUP PROGRAM - BERKELEY OFFICE <a href="mailto:henry.wong@dtsc.ca.gov">henry.wong@dtsc.ca.gov</a> (510) 540-3770  Cleanup Status History  ACTIVE AS OF 10/28/2005

Dig Location	GeoTracker or EnviroStor Site Name	Distance and Direction <i>from</i> Dig Location	Estimated Depth To Groundwater at Site (ft bgs)	Groundwater Flow Direction	Site Contamination Summary	Link to Site Information	Comments and Notes
	FORDHAM PROPERTY (T0600101903) 5515 DOYLE STREET Emeryville, CA 94608  LUST Cleanup Site  Cleanup Status: Completed - Case Closed RB Case #: 01-2071 Loc Case #: RO0000376	~850 feet southeast	9 - 13	South/south west	Site is the location of a former gasoline UST that was removed in 1994. Maximum soil concentrations reported after the cleanup included: TPH gasoline – 5,200 mg/kg; TPH diesel – 580 mg/kg; benzene – 24 mg/kg; toluene – 180 mg/kg; ethylbenzene - 120 mg/kg; xylenes – 590 mg/kg; and heavy metals – 11 mg/kg. Maximum groundwater concentrations reported in the closure document included: : TPH gasoline – 830 µg/L; TPH diesel – 730 µg/L; benzene – 24 µg/L; toluene – 1.3 µg/L; ethylbenzene – 48 µg/L; and xylenes – 20 µg/L. This site was closed with <b>POST CLOSURE SITE MANAGEMENT REQUIREMENTS</b> in 2011.	<a href="http://geotracker.waterboards.ca.gov/profile_report.asp?global_id=T0600101903">http://geotracker.waterboards.ca.gov/profile_report.asp?global_id=T0600101903</a>	<b>POST CLOSURE SITE MANAGEMENT REQUIREMENTS</b>  NO EXCAVATION OF CONTAMINATED SOILS WITHOUT AGENCY REVIEW AND APPROVAL NOTIFY PRIOR TO SUBSURFACE WORK PERFORM H&S PLAN PRIOR TO SUBSURFACE WORK  CONTACT INFORMATION MARK DETTERMAN/ ALAMEDA COUNTY LOP <a href="mailto:mark.detterman@acgov.org">mark.detterman@acgov.org</a> (510) 567-6876  Cleanup Status History  4/29/2011 Completed - Case Closed 12/14/2007 Open - Site Assessment 8/13/2007 Open - Site Assessment 1/27/1998 Open - Site Assessment 10/17/1994 Open - Site Assessment 10/17/1994 Open - Case Begin Date

Dig Location	GeoTracker or EnviroStor Site Name	Distance and Direction <u>from</u> Dig Location	Estimated Depth To Groundwater at Site (ft bgs)	Groundwater Flow Direction	Site Contamination Summary	Link to Site Information	Comments and Notes
	CHEVRON #20-6265 (SLT2007076) 1520 POWELL EMERYVILLE, CA 94608  Cleanup Program Site  Cleanup Status: Open - Site Assessment RB Case #: NA Loc Case #: RO0002535	~850 feet west	1 - 5	West/ Southwest	The site is a former Chevron asphalt plant and bulk terminal. Maximum soil concentrations reported in the 2012 Conceptual Site Model and Closure Request included: TPH diesel – 3,500 mg/kg, TPH gasoline – 1,900 mg/kg, benzene – 0.5 mg/kg, and trichloroethene (TCE) – 15 mg/kg. Maximum groundwater concentrations reported from most recent event (2013) included: TPH gasoline – 300 µg/L; benzene – 0.6 µg/L; PCE – 420 µg/L; TCE – 34 µg/L; cis 1,2 dichloroethylene (DCE) – 100 µg/L and vinyl chloride – 4 µg/L. The 2012 investigation report requested closure based on the demonstration of low risk of exposure.	<a href="http://geotracker.waterboards.ca.gov/profile_report.asp?global_id=SLT2007076">http://geotracker.waterboards.ca.gov/profile_report.asp?global_id=SLT2007076</a>	Cleanup Status History  12/13/1995 Open - Site Assessment 7/14/1989 Open - Site Assessment 7/14/1989 Open - Case Begin Date
	SIEGAL & STRAIN ARCHITECT (T0600191823) 1295 59TH Emeryville, CA 94608 LUST Cleanup Site Cleanup Status: Completed - Case Closed/RB Case #: 01-2470/Loc Case#:RO0000825	~900 feet northeast	NA	NA	Site history and investigation data are unavailable. Geotracker reports site COC as gasoline in groundwater. Site was closed with further action in 1999.	<a href="http://geotracker.waterboards.ca.gov/profile_report.asp?global_id=T0600191823">http://geotracker.waterboards.ca.gov/profile_report.asp?global_id=T0600191823</a>	Cleanup Status History  7/7/1999 Completed - Case Closed 12/1/1998 Open - Case Begin Date

Dig Location	GeoTracker or EnviroStor Site Name	Distance and Direction <u>from</u> Dig Location	Estimated Depth To Groundwater at Site (ft bgs)	Groundwater Flow Direction	Site Contamination Summary	Link to Site Information	Comments and Notes
	HSP Property (60001876) 1301 59th Street Emeryville, CA 94608  Site Type: State Response Status: No Further Action	~900 feet northeast	No groundwater was encountered at depths up to 5 feet bgs	NA	Site is the location of a former rail spur that has been redeveloped into open space/park use. Soils were removed to address TPH, polychlorinated biphenyl (PCBs), and metals impacts. Maximum soil concentrations reported in the confirmation samples included: TPH diesel – 2.6 mg/kg; TPH motor oil – 11 mg/kg; arsenic – 120 mg/kg; and lead – 6.6 mg/kg. Site was closed with further action in 2013.	<a href="http://www.envirostor.dtsc.ca.gov/public/profile_report.asp?global_id=60001876">http://www.envirostor.dtsc.ca.gov/public/profile_report.asp?global_id=60001876</a>	Cleanup Status History  NO FURTHER ACTION AS OF 3/18/2013
	WESTINGHOUSE ELECTRIC - PARCEL 4 (SL20235853) 4899 PELADEAU EMERYVILLE, CA 94608 ALAMEDA COUNTY CLEANUP PROGRAM SITE	~950 feet northwest	NA	NA	Site operations included repair and manufacturing of transformers. Site records indicate that PCBs were handled. A slurry wall was constructed in the NW corner in 1985 around areas containing over 50 mg/kg PCBs. A cap over the enclosed PCB contamination was constructed. Additional site history and data were unavailable. Details of the <b>DEED RESTRICTION</b> were not available.	<a href="http://geotracker.waterboards.ca.gov/profile_report.asp?global_id=SL20235853">http://geotracker.waterboards.ca.gov/profile_report.asp?global_id=SL20235853</a>	<b>DEED RESTRICTION</b> No information available. CONTACT INFORMATION MARK DETTERMAN/ ALAMEDA COUNTY LOP <a href="mailto:mark.detterman@acgov.org">mark.detterman@acgov.org</a> (510) 567-6876 Cleanup Status History 10/10/1994 Open - Site Assessment 8/23/1994 Open - Case Begin Date

Dig Location	GeoTracker or EnviroStor Site Name	Distance and Direction <u>from</u> Dig Location	Estimated Depth To Groundwater at Site (ft bgs)	Groundwater Flow Direction	Site Contamination Summary	Link to Site Information	Comments and Notes
	GARZA & ASSOCIATES (T06019727624) 1240 POWELL ST EMERYVILLE, CA 94608  LUST Cleanup Site  Cleanup Status: Completed - Case Closed RB Case #: NA Loc Case #: RO0002869	~950 feet northeast	6 - 9	Southwest	Site is the location of former USTs. Site was redeveloped into office space. Groundwater COCs were reported as not detected in the closure report. Site was closed with <b>POST CLOSURE SITE MANAGEMENT REQUIREMENTS</b> in 2013.	<a href="http://geotracker.waterboards.ca.gov/profile_report.asp?global_id=T06019727624">http://geotracker.waterboards.ca.gov/profile_report.asp?global_id=T06019727624</a>	<b>POST CLOSURE SITE MANAGEMENT REQUIREMENTS</b> PERFORM H&S PLAN PRIOR TO SUBSURFACE WORK Contact Information MARK DETTERMAN/ALAMEDA COUNTY LOP <a href="mailto:mark.detterman@acgov.org">mark.detterman@acgov.org</a> (510) 567-6876  Cleanup Status History 6/28/2013 Completed - Case Closed 3/28/2013 Open - Eligible for Closure 7/27/2005 Open - Site Assessment 2/7/2002 Open - Site Assessment 11/22/1991 Open - Case Begin Date
	Marchant/Whitney (60001628) 5679 Horton Street Emeryville, CA 94608  Site Type: Voluntary Cleanup Status: Active	~950 feet southwest	6 - 7	Altered due to groundwater extraction	Site is currently unoccupied and was formerly used to manufacture calculators and valves. Soil and groundwater remediation have been ongoing at the site. Maximum groundwater concentrations included: TCE – 110,000 µg/L; cis 1,2 DCE – 11,000 µg/L; trans 1,2 DCE – 2,100 µg/L; vinyl chloride – 7,900 µg/L. Soil analytical data was not available. Site remains open and in active remediation.	<a href="http://www.envirostor.dtsc.ca.gov/public/profile_report.asp?global_id=60001628">http://www.envirostor.dtsc.ca.gov/public/profile_report.asp?global_id=60001628</a>	Cleanup Status ACTIVE AS OF 2/7/2012

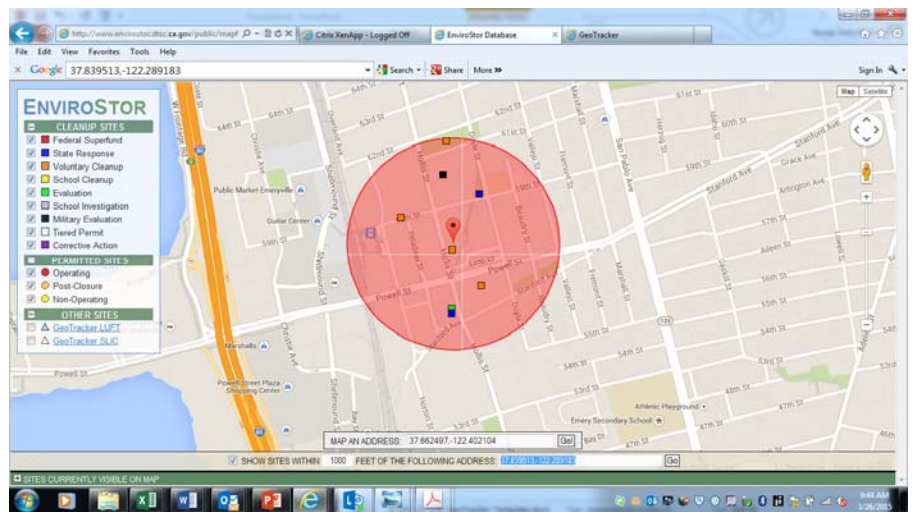
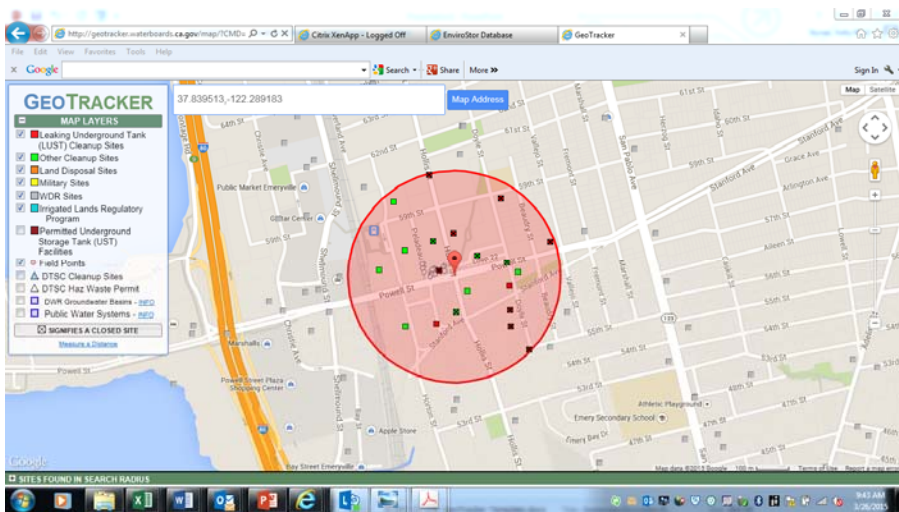
Dig Location	GeoTracker or EnviroStor Site Name	Distance and Direction <u>from</u> Dig Location	Estimated Depth To Groundwater at Site (ft bgs)	Groundwater Flow Direction	Site Contamination Summary	Link to Site Information	Comments and Notes
	THOROUGHbred BUILDING (T0600102100) 1397 55TH STREET Emeryville, CA 94608  LUST Cleanup Site  Cleanup Status: Completed - Case Closed RB Case #: 01-2284 Loc Case #: RO0000050	~1,000 feet southeast	~14	West/ southwest	Site is the location of a former kerosene UST removed in 1997. Maximum soil concentrations listed in the 2011 Case Closure summary included: TPH kerosene – 4,400 mg/kg; ethylbenzene – 5.6 mg/kg; and xylenes – 3.1 mg/kg. Groundwater concentrations were reportedly non-detect. Site was closed with <b>POST CLOSURE SITE MANAGEMENT REQUIREMENTS</b> in 2011.	<a href="http://geotracker.waterboards.ca.gov/profile_report.asp?global_id=T0600102100">http://geotracker.waterboards.ca.gov/profile_report.asp?global_id=T0600102100</a>	<b>POST CLOSURE SITE MANAGEMENT REQUIREMENTS</b> NOTIFY PRIOR TO DEVELOPMENT PERFORM H&S PLAN PRIOR TO SUBSURFACE WORK Contact Information MARK DETTERMAN/ALAMEDA COUNTY LOP <a href="mailto:mark.detterman@acgov.org">mark.detterman@acgov.org</a> (510) 567-6876  Cleanup Status History 4/29/2011 Completed - Case Closed 1/24/2007 Open - Site Assessment 9/27/2006 Open - Site Assessment 7/24/1997 Open - Site Assessment 2/14/1997 Open - Case Begin Date
	HOLLIS STREET PROJECT (T0600100710) 6050 HOLLIS Emeryville, CA 94608  LUST Cleanup Site  Cleanup Status: Completed - Case Closed RB Case #: 01-0773 Loc Case #: RO0000699	~ 1,000 feet northwest	NA	NA	Site history and investigation data are unavailable. Geotracker reports site COC as gasoline in groundwater. Site was closed with further action in 1997.	<a href="http://geotracker.waterboards.ca.gov/profile_report.asp?global_id=T0600100710">http://geotracker.waterboards.ca.gov/profile_report.asp?global_id=T0600100710</a>	Cleanup Status History 9/25/1997 Completed - Case Closed 7/15/1987 Open - Case Begin Date

**Note:**

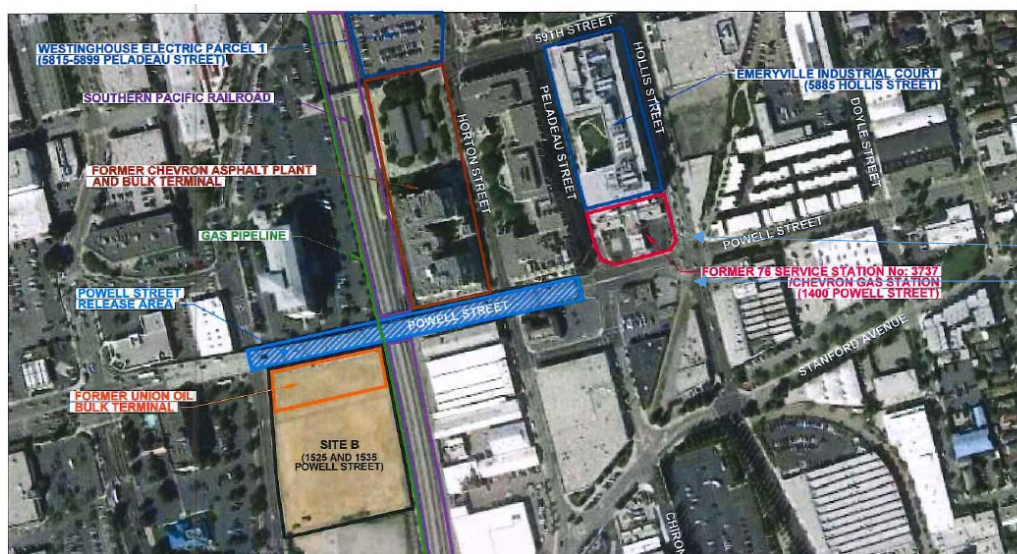
ft bgs = feet below ground surface

Locations shown in GeoTracker and EnviroStor sometimes differ from site-specific maps or remedial actions by several hundred feet; therefore, distances and directions provided in this review should be considered approximate.

D-257A(CC-179)

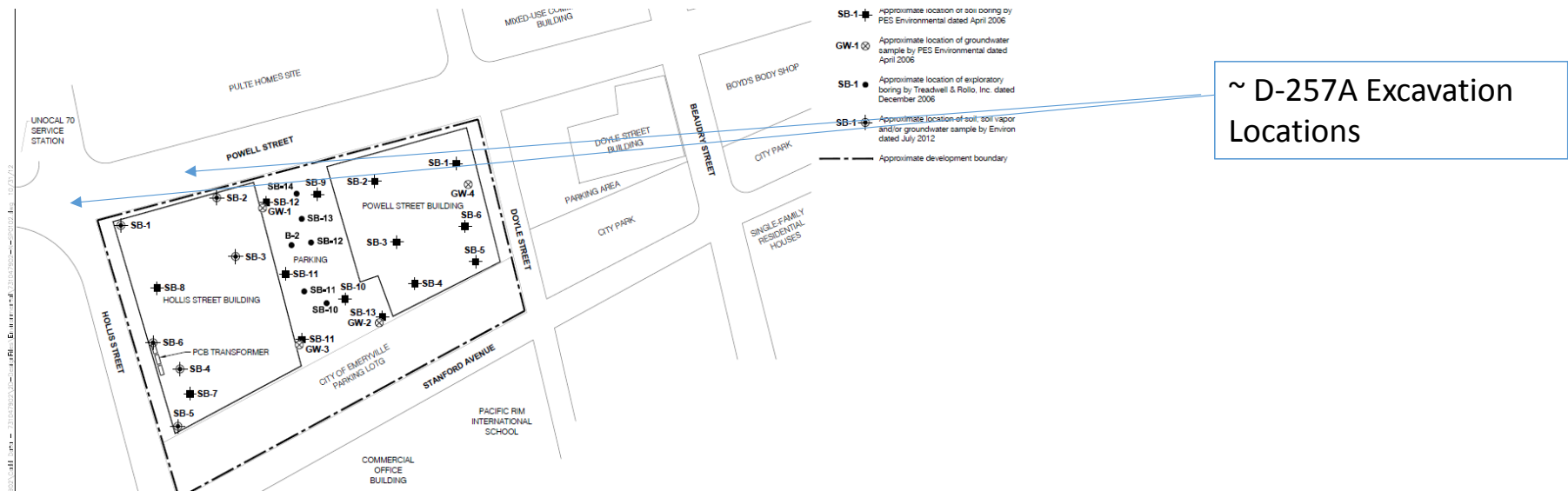


# D-257A(CC-179) near TOSCO 76#3737 Site



~ Location D-257A(CC-179)

902\Call Data - 731047902\20--DesireFiles\Elvira\res-id\731047902--X-SP0102.jpg 10/31/12



# Industrial Hard Chrome Deed Restricted Area

