

Khatri, Paresh, Env. Health

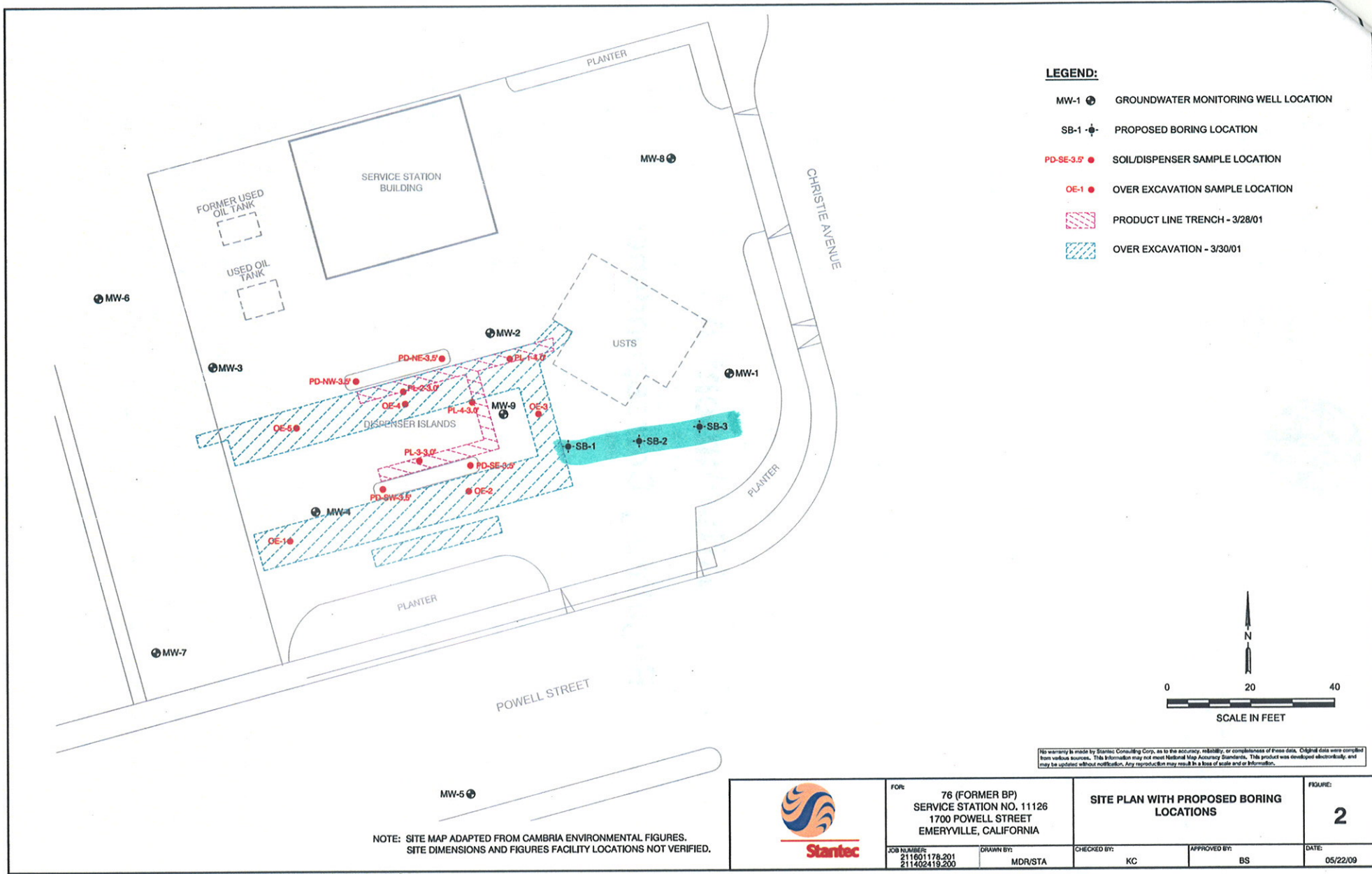
From: Phillips, Hollis [Hollis.Phillips@arcadis-us.com]
Sent: Thursday, April 01, 2010 5:30 PM
To: Khatri, Paresh, Env. Health
Subject: 11126 w/ attachment
Attachments: 0868_001.pdf

Paresh:


[Here's the figure](#)

From: Scan and Print
Sent: Thursday, April 01, 2010 5:37 PM
To: Phillips, Hollis
Subject: Attached Image

NOTICE: This e-mail and any files transmitted with it are the property of ARCADIS U.S., Inc. and its affiliates. All rights, including without limitation copyright, are reserved. The proprietary information contained in this e-mail message, and any files transmitted with it, is intended for the use of the recipient(s) named above. If the reader of this e-mail is not the intended recipient, you are hereby notified that you have received this e-mail in error and that any review, distribution or copying of this e-mail or any files transmitted with it is strictly prohibited. If you have received this e-mail in error, please notify the sender immediately and delete the original message and any files transmitted. The unauthorized use of this e-mail or any files transmitted with it is prohibited and disclaimed by ARCADIS U.S., Inc. and its affiliates. Nothing herein is intended to constitute the offering or performance of services where otherwise restricted by law.



No warranty is made by Stantec Consulting Corp. as to the accuracy, reliability, or completeness of these data. Original data were compiled from various sources. This information may not meet National Map Accuracy Standards. This product was developed electronically and may be updated without notification. Any reproduction may result in a loss of scale and/or information.

	F06: 76 (FORMER BP) SERVICE STATION NO. 11126 1700 POWELL STREET EMERYVILLE, CALIFORNIA	SITE PLAN WITH PROPOSED BORING LOCATIONS		FIGURE: 2
	JOB NUMBER: 211601178.201 211402419.200	DRAWN BY: MDR/STA	CHECKED BY: KC	APPROVED BY: BS