

# LOG OF EXPLORATORY BORING

PROJECT NUMBER 213

BORING NO. MW-1

PROJECT NAME 1333 Park Avenue, Emeryville, CA

PAGE

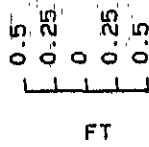
BY L. A. Flors

DATE 3/10/92

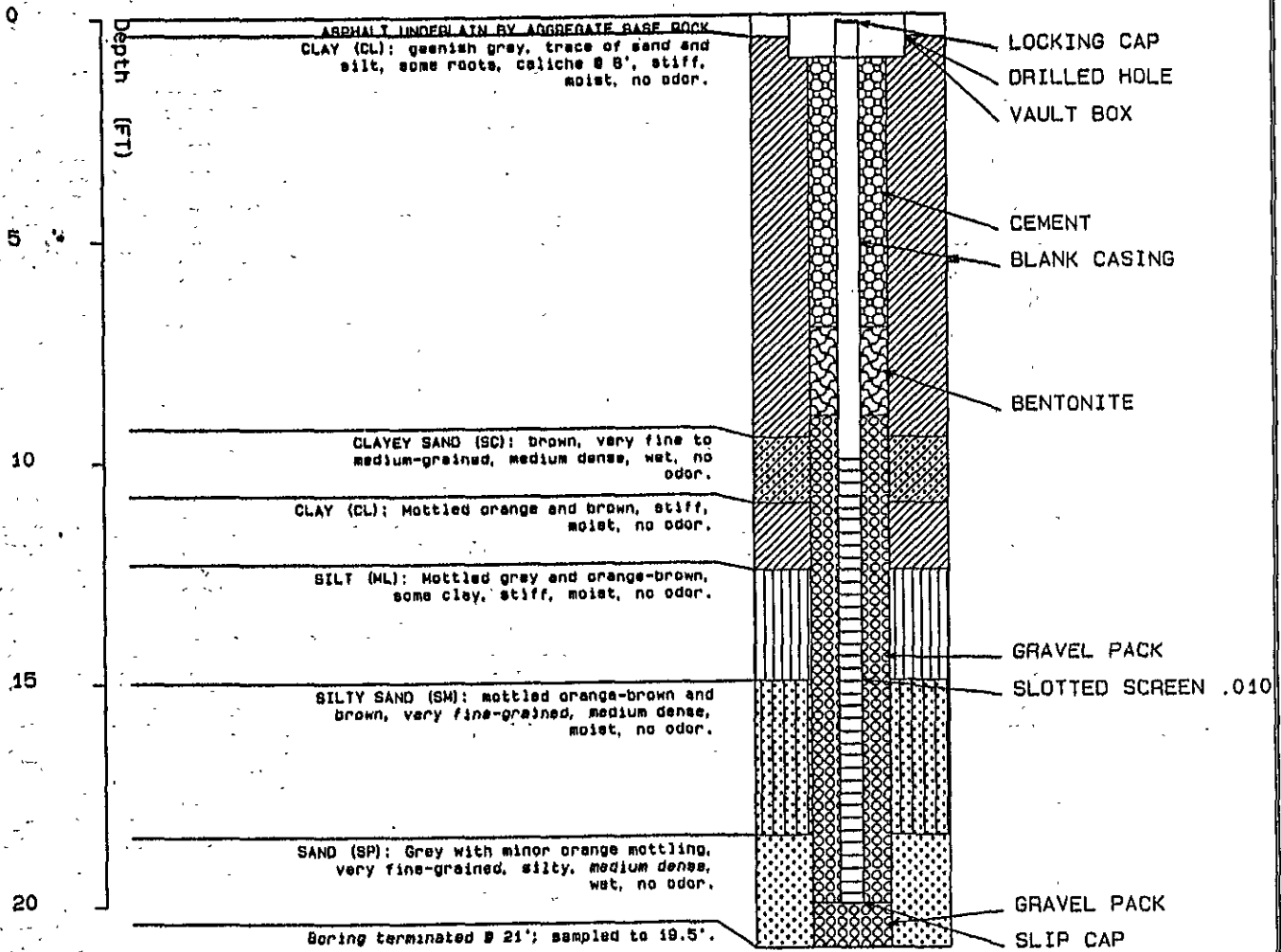
SURFACE ELEV. 19 FT

RECOVERY (FT/FT)	OVA (PPM)	PENETRA- TION (BLOWS/FT)	GROUND WATER LEVELS	DEPTH IN FT.	SAMPLES	LITHO- GRAPHIC COLUMN	DESCRIPTION
				1			ASPHALT UNDERLAIN BY AGGREGATE BASE ROCK
				2			CLAY (CL): greenish grey, trace of sand and silt, some roots, caliche @ 8', stiff, moist, no odor.
				3			
				4			
1.0/1.0		9		5			
1.5/1.5	7	14		6			CLAYEY SAND (SC): brown, very fine to medium-grained, medium dense, wet, no odor.
1.5/1.5		15		8			
1.5/1.5		25		9			CLAY (CL): Mottled orange and brown, stiff, moist, no odor.
1.5/1.5	22	14		10			
1.5/1.5		15		11			SILT (ML): Mottled grey and orange-brown, some clay, stiff, moist, no odor.
1.5/1.5		10		12			
1.5/1.5		13		13			SILTY SAND (SM): mottled orange-brown and brown, very fine-grained, medium dense, moist, no odor.
1.5/1.5		20		14			
1.5/1.5		20		15			SAND (SP): Gray with minor orange mottling, very fine-grained, silty, medium dense, wet, no odor.
1.5/1.5		20		16			
				17			Boring terminated @ 21'; sampled to 19.5'.
				18			
				19			
				20			
				21			
				22			

REMARKS: Boring drilled with continuous-flight, hollow-stem, 8-inch O.D. augers. Samples collected in a 2.0-inch I.D. California Sampler or 1.5-inch I.D. SPT Sampler.



MW-1



LEGEND

Static Water Level



SP

SM

SC

ML

CL

ASPHALT

WELL ID : MW-1

1333 PARK AVENUE, EMERYVILLE, CA 94608

TANK PROTECT ENGINEERING

Figure :

# LOG OF EXPLORATORY BORING

PROJECT NUMBER 213

BORING NO. NW-2

PROJECT NAME 1333 Park Avenue, Emeryville, CA

PAGE

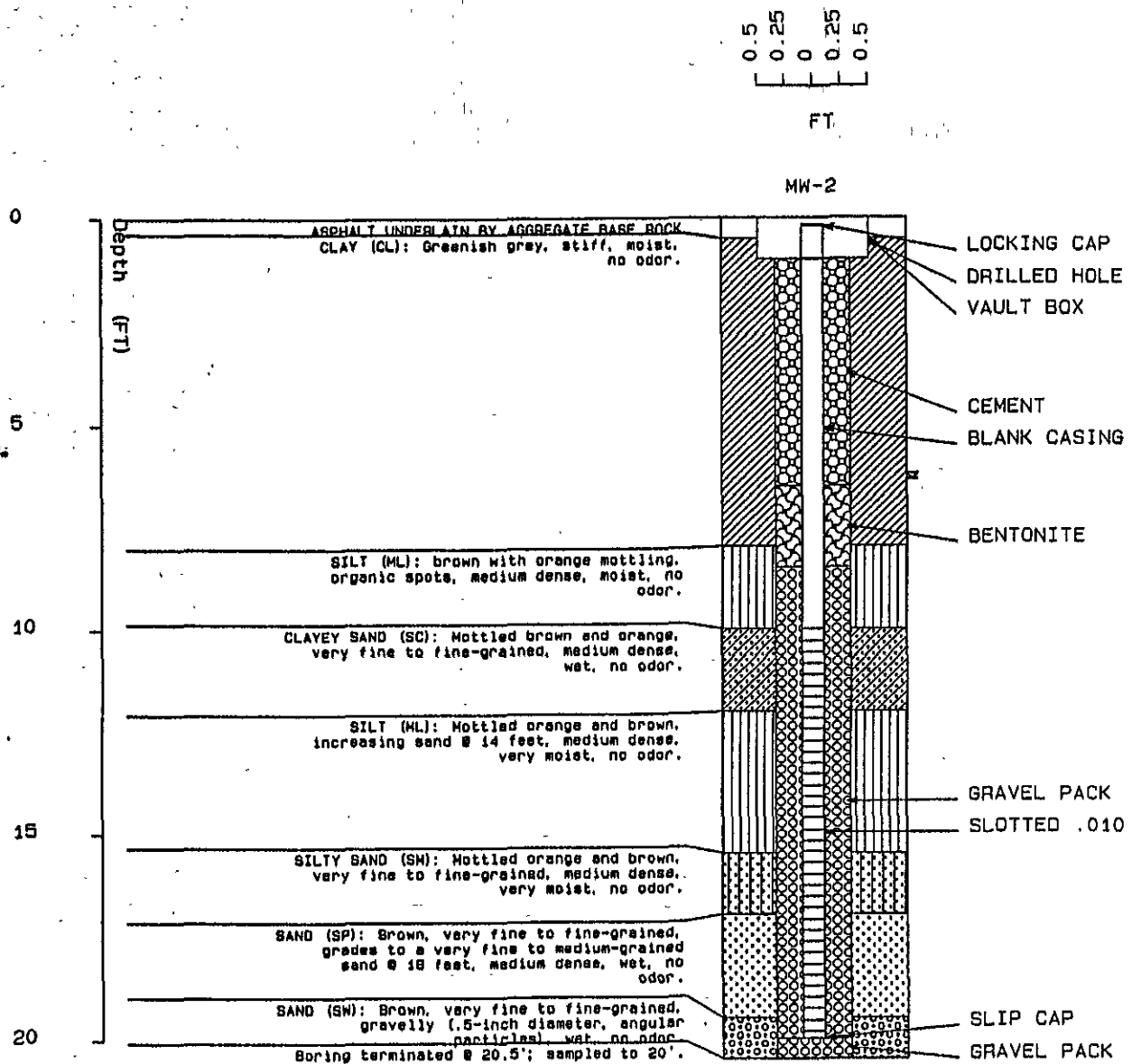
BY L. A. Flora

DATE 3/10/92

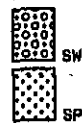
SURFACE ELEV. 20 FT

RECOVERY (FT/FT)	QVA (PPM)	PENETRA- TION (BLOWS/FT)	GROUND WATER LEVELS	DEPTH IN FT.	SAMPLES	LITHO- GRAPHIC COLUMN	DESCRIPTION
				1		[Hatched pattern]	ASPHALT UNDERLAIN BY AGGREGATE BASE ROCK
				2		[Hatched pattern]	CLAY (CL): Greenish grey, stiff, moist, no odor.
				3		[Hatched pattern]	
				4		[Hatched pattern]	
1.5/1.5	3	18		5	[Solid black]	[Hatched pattern]	
				6		[Solid black]	
				7		[Hatched pattern]	
				8		[Hatched pattern]	SILT (ML): brown with orange mottling, organic spots, medium dense, moist, no odor.
				9		[Vertical lines]	
1.0/1.5		20		10		[Vertical lines]	CLAYEY SAND (SC): Mottled brown and orange, very fine to fine-grained, medium dense, wet, no odor.
				11		[Cross-hatched]	
1.5/1.5	4	13		12		[Cross-hatched]	SILT (ML): Mottled orange and brown, increasing sand @ 14 feet, medium dense, very moist, no odor.
				13		[Vertical lines]	
1.0/1.5		10		14		[Vertical lines]	SILTY SAND (SM): Mottled orange and brown, very fine to fine-grained, medium dense, very moist, no odor.
				15		[Vertical lines]	
1.5/1.5		15		16		[Vertical lines]	SAND (SP): Brown, very fine to fine-grained, grades to a very fine to medium-grained sand @ 18 feet, medium dense, wet, no odor.
				17		[Vertical lines]	
1.5/1.5		14		18		[Dotted pattern]	SAND (SW): Brown, very fine to fine-grained, gravelly (.5-inch diameter, angular particles), wet, no odor.
				19		[Dotted pattern]	
1.0/1.5		20		20		[Dotted pattern]	Boring terminated @ 20.5'; sampled to 20'.
1.0/1.5		30		21		[Dotted pattern]	
				22		[Dotted pattern]	

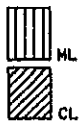
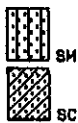
REMARKS: Boring drilled with continuous-flight, hollow-stem, 8-inch O. D. augers. Samples collected in a 2.0-inch I. D. California Sampler or 1.5-inch SPT Sampler.



LEGEND



Static Water Level



ASPHALT

WELL ID : MW-2

1333 PARK AVENUE, EMERYVILLE, CA 94608

TANK PROTECT ENGINEERING

Figure :

# LOG OF EXPLORATORY BORING

PROJECT NUMBER 213

BORING NO. MW-3

PROJECT NAME 1333 Park Avenue, Emeryville, CA

PAGE

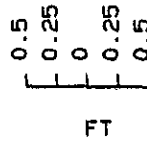
BY L. A. Flora

DATE 3/10/92

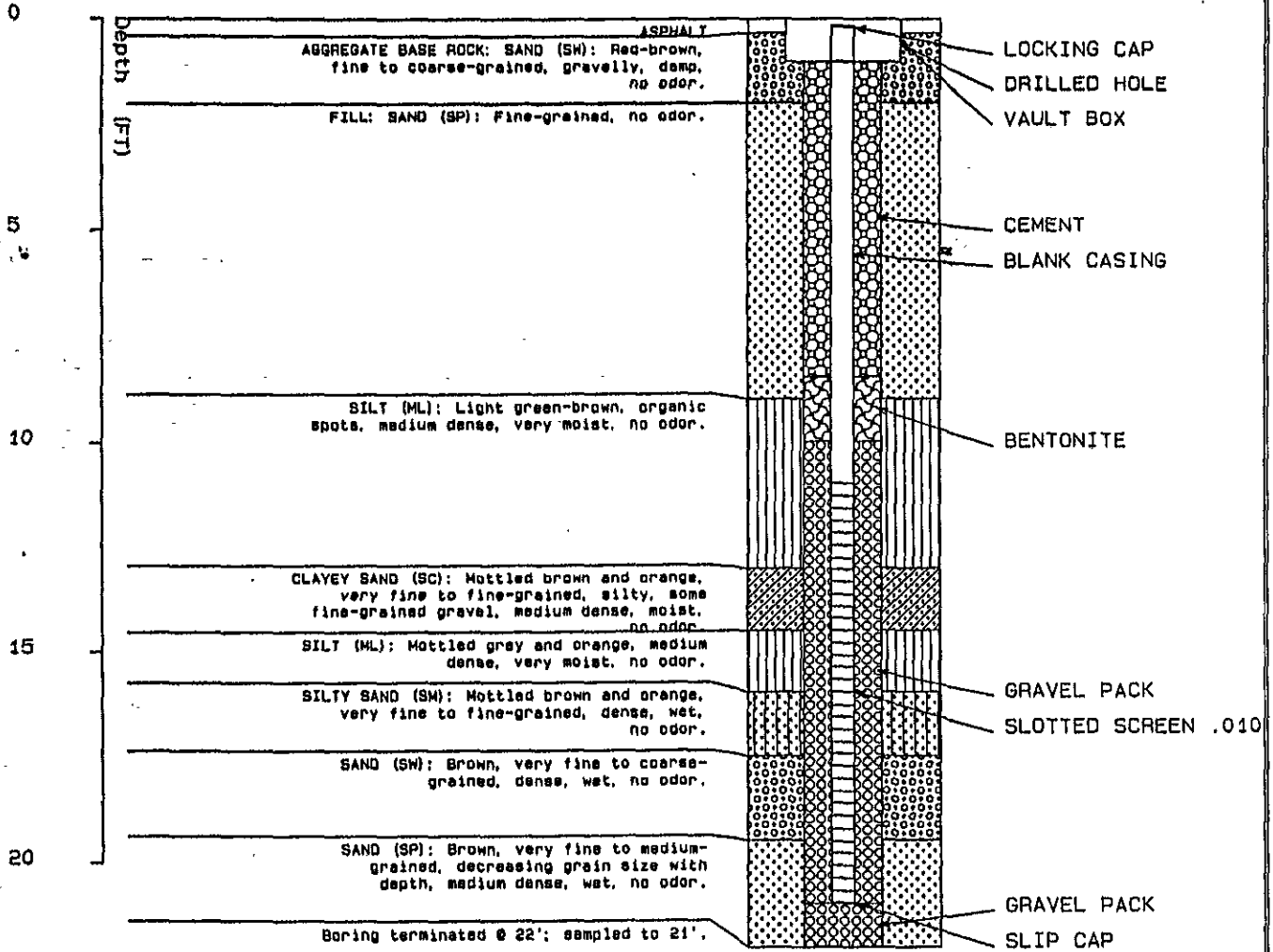
SURFACE ELEV. 19 FT

RECOVERY (FT/FT)	QVA (PPM)	PENETRA- TION (BLOWS/FT)	GROUND WATER LEVELS	DEPTH IN FT.	SAMPLES	LITHO- GRAPHIC COLUMN	DESCRIPTION
				1		●●●●●	ASPHALT
				2		●●●●●	AGGREGATE BASE ROCK: SAND (SW): Red-brown, fine to coarse-grained, gravelly, damp, no odor.
				3		●●●●●	FILL: SAND (SP): Fine-grained, no odor.
				4		●●●●●	
				5		●●●●●	
				6		●●●●●	
				7		●●●●●	
				8		●●●●●	
				9		●●●●●	
1.5/1.5	10	20		10			SILT (ML): Light green-brown, organic spots, medium dense, very moist, no odor.
1.5/1.5		17		11			
1.5/1.5		20		12			
1.5/1.5		12		13			CLAYEY SAND (SC): Mottled brown and orange, very fine to fine-grained, silty, some fine-grained gravel, medium dense, moist, no odor.
1.5/1.5		12		14			
1.0/1.5		23		15			SILT (ML): Mottled grey and orange, medium dense, very moist, no odor.
1.0/1.5		37		16			SILTY SAND (SM): Mottled brown and orange, very fine to fine-grained, dense, wet, no odor.
1.0/1.5		44		17			
1.0/1.5		44		18		●●●●●	SAND (SW): Brown, very fine to coarse-grained, dense, wet, no odor.
1.0/1.5		26		19		●●●●●	SAND (SP): Brown, very fine to medium-grained, decreasing grain size with depth, medium dense, wet, no odor.
				20		●●●●●	
				21		●●●●●	Boring terminated @ 22'; sampled to 21'.
				22		●●●●●	

REMARKS: Boring drilled with continuous-flight, hollow-stem, 8-inch O. D. augers. Samples collected in a 2.0-inch I. D. California Sampler or 1.5-inch SPT Sampler.



MW-3



LEGEND

Static Water Level

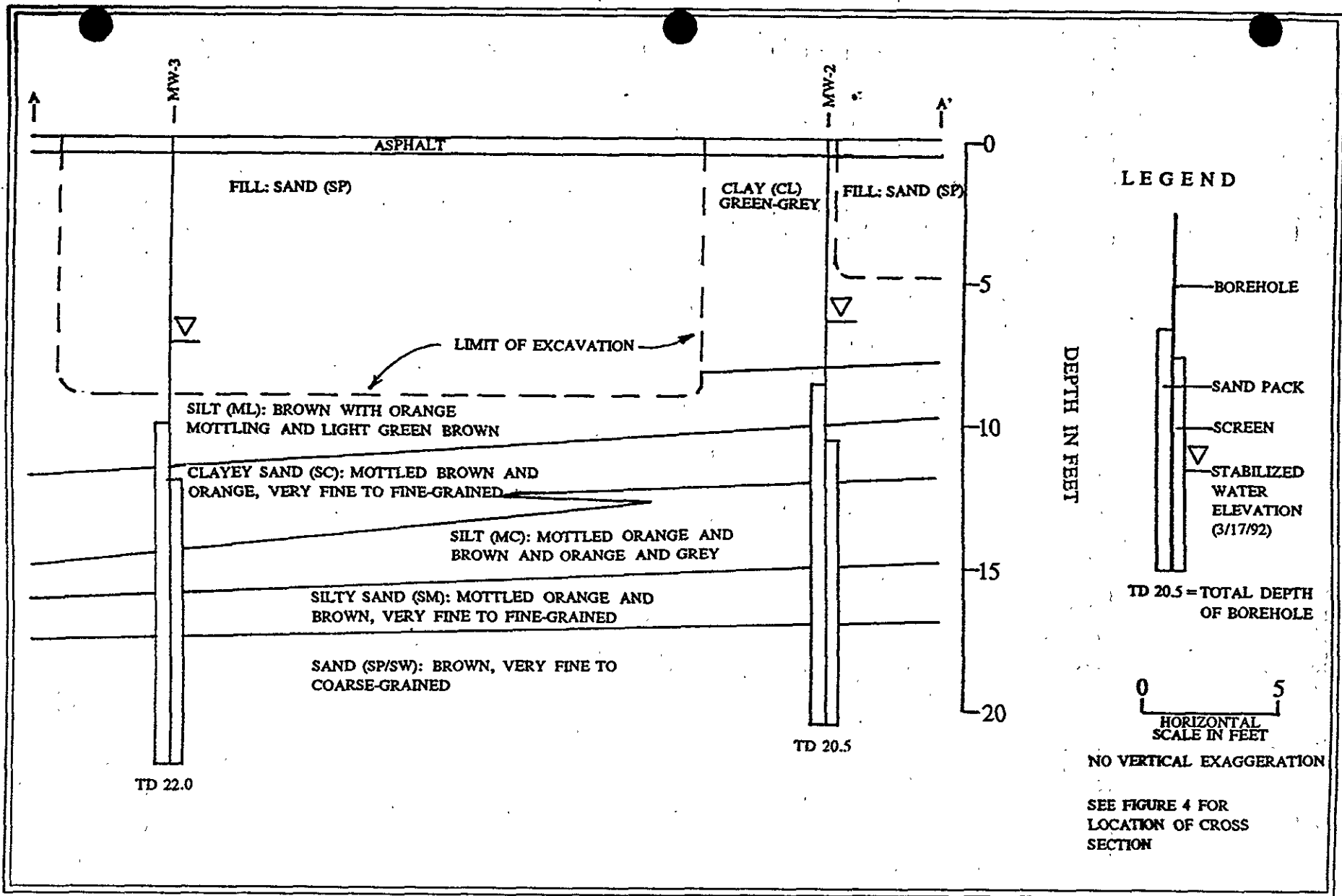


WELL ID : MW-3

1333 PARK AVENUE, EMERYVILLE, CA 94608

TANK PROTECT ENGINEERING

Figure :



GEOLOGIC CROSS SECTION A-A'  
 1333 PARK AVENUE  
 EMERYVILLE, CALIFORNIA

FIGURE  
 5

