

TABLE 2
SOIL SAMPLING RESULTS JANUARY 2007 BORINGS
1600 63rd Street, Emeryville, CA

Chemical Concentrations Detected (mg/kg)										
Sample No.	Date Sampled	Depth (below ground surface)	TPHg (1)	TPHd (1)	Benzene	Toluene	Ethylbenzene	Total Xylenes	Fuel Oxygenates (including Ethanol)	Total Lead
Treadwell & Rollo, Inc.										
SB-1	1/10/2007	6-6.5	<0.1	2.9	<0.005	<0.005	<0.005	<0.005	<0.005 to <0.1	8.9
	1/10/2007	9.5-10	120	1,700	<0.005	<0.005	<0.005	<0.005	<0.005 to <0.1	<5
	1/10/2007	14.5-15	57	1,500	<0.005	<0.005	<0.005	<0.005	<0.005 to <0.1	9.2
	1/10/2007	19.5-20	<0.1	5.9	<0.005	<0.005	<0.005	<0.005	<0.005 to <0.1	<5
SB-2	1/10/2007	6-6.5	<0.1	2.1	<0.005	<0.005	<0.005	<0.005	<0.005 to <0.1	6
	1/10/2007	9.5-10	0.16	98	<0.005	<0.005	<0.005	<0.005	<0.005 to <0.1	<5
	1/10/2007	14.5-15	33	770	<0.005	<0.005	<0.005	<0.005	<0.005 to <0.1	5
	1/10/2007	17-17.5	1.9	340	<0.005	<0.005	<0.005	<0.005	<0.005 to <0.1	<5
SB-3	1/10/2007	19.5-20	0.45	45	<0.005	<0.005	<0.005	<0.005	<0.005 to <0.1	<5
	1/10/2007	6-6.5	2.5	340	<0.005	<0.005	<0.005	<0.005	<0.005 to <0.1	5.5
	1/10/2007	9.5-10	31	280	<0.005	<0.005	<0.005	<0.005	<0.005 to <0.1	17
	1/10/2007	14.5-15	1.2	18	<0.005	<0.005	<0.005	<0.005	<0.005 to <0.1	<5
SB-4	1/10/2007	17-17.5	57	660	<0.005	<0.005	0.013	0.05	<0.005 to <0.1	5
	1/10/2007	19.5-20	<0.1	4.1	<0.005	<0.005	<0.005	<0.005	<0.005 to <0.1	<5
	1/10/2007	6-6.5	0.62	240	<0.005	<0.005	<0.005	<0.005	<0.005 to <0.1	5.3
	1/10/2007	9.5-10	79	910	<0.005	<0.005	<0.005	<0.005	<0.005 to <0.1	6.2
TR-1	1/10/2007	14.5-15	5.1	630	<0.005	<0.005	<0.005	<0.005	<0.005 to <0.1	6.3
	1/10/2007	17.5-18	220	3,800	<0.025	<0.025	<0.025	<0.025	<0.012 to <0.5	6.9
	1/10/2007	19.5-20	0.27	44	<0.005	<0.005	<0.005	<0.005	<0.005 to <0.1	6
	1/9/2007	4.5-5	<0.1	27	<0.005	<0.005	<0.005	<0.005	<0.005 to <0.1	22
TR-2	1/9/2007	8-8.5	<0.1	14	<0.005	<0.005	<0.005	<0.005	<0.005 to <0.1	6.2
	1/9/2007	9.5-10	<0.1	2.8	<0.005	<0.005	<0.005	<0.005	<0.005 to <0.1	11
	1/9/2007	14.5-15	<0.1	2.4	<0.005	<0.005	<0.005	<0.005	<0.005 to <0.1	8.4
	1/9/2007	19.5-20	<0.1	2.2	<0.005	<0.005	<0.005	<0.005	<0.005 to <0.1	12
TR-3	1/9/2007	4.5-5	<0.1	10	<0.005	<0.005	<0.005	<0.005	<0.005 to <0.1	130
	1/9/2007	9.5-10	1.4	2,100	<0.025	<0.025	<0.025	<0.025	<0.012 to <0.5	6.3
	1/9/2007	14.5-15	82	4,200	<0.025	<0.025	<0.025	<0.025	<0.012 to <0.5	6.6
	1/9/2007	19.5-20	3.9	490	<0.025	<0.025	<0.025	<0.025	<0.012 to <0.5	13
TR-4	1/9/2007	4.5-5	1.3	490	<0.005	<0.005	<0.005	<0.005	<0.005 to <0.1	7.4
	1/9/2007	9.5-10	0.21	72	<0.005	<0.005	<0.005	<0.005	<0.005 to <0.1	6.8
	1/9/2007	15-15.5	0.25	250	<0.005	<0.005	<0.005	<0.005	<0.005 to <0.1	25
	1/9/2007	19.5-20	<0.1	11	<0.005	<0.005	<0.005	<0.005	<0.005 to <0.1	7
TR-5	1/9/2007	4.5-5	<0.1	7.1	<0.005	<0.005	<0.005	<0.005	<0.005 to <0.1	12
	1/9/2007	8.5-9	<0.1	1.3	<0.005	<0.005	<0.005	<0.005	<0.005 to <0.1	<5
	1/9/2007	9.5-10	<0.1	4.9	<0.005	<0.005	<0.005	<0.005	<0.005 to <0.1	7.8
	1/9/2007	14.5-15	<0.1	2.4	<0.005	<0.005	<0.005	<0.005	<0.005 to <0.1	11
ESL	1/9/2007	19.5-20	<0.1	1.3	<0.005	<0.005	<0.005	<0.005	<0.005 to <0.1	10
	1/9/2007	4.5-5	<0.1	3,500	<0.005	<0.005	<0.005	<0.005	<0.005 to <0.1	410
	1/9/2007	9.5-10	6.1	870	<0.005	<0.005	<0.005	<0.005	<0.005 to <0.1	<5
	1/9/2007	14.5-15	250	180	<0.005	<0.005	<0.005	<0.005	<0.005 to <0.1	12
ESL	19.5-20	0.65	6.8	<0.005	<0.005	<0.005	<0.005	<0.005 to <0.1	12	
ESL			400	500	0.38	9.3	32	11		750

Notes:
 mg/kg = milligrams per kilogram
 TPHg = Total Petroleum Hydrocarbons as Gasoline (EPA Method 8260).
 TPHd = Total Petroleum Hydrocarbons as Diesel (EPA Method 8015).
 Fuel Oxygenates = MfBE, DiPE, ETBE, TAME, TBA, I, 2 DCA, EDB, Ethanol
 < = Below Specified Reporting Limits.
 ESL = Environmental Screening Levels, Shallow Soil, Groundwater not a source of drinking water, Commercial/Industrial Land Use (SFBRWQCB 2005)
 1,700 = Bold value exceeds environmental screening level.

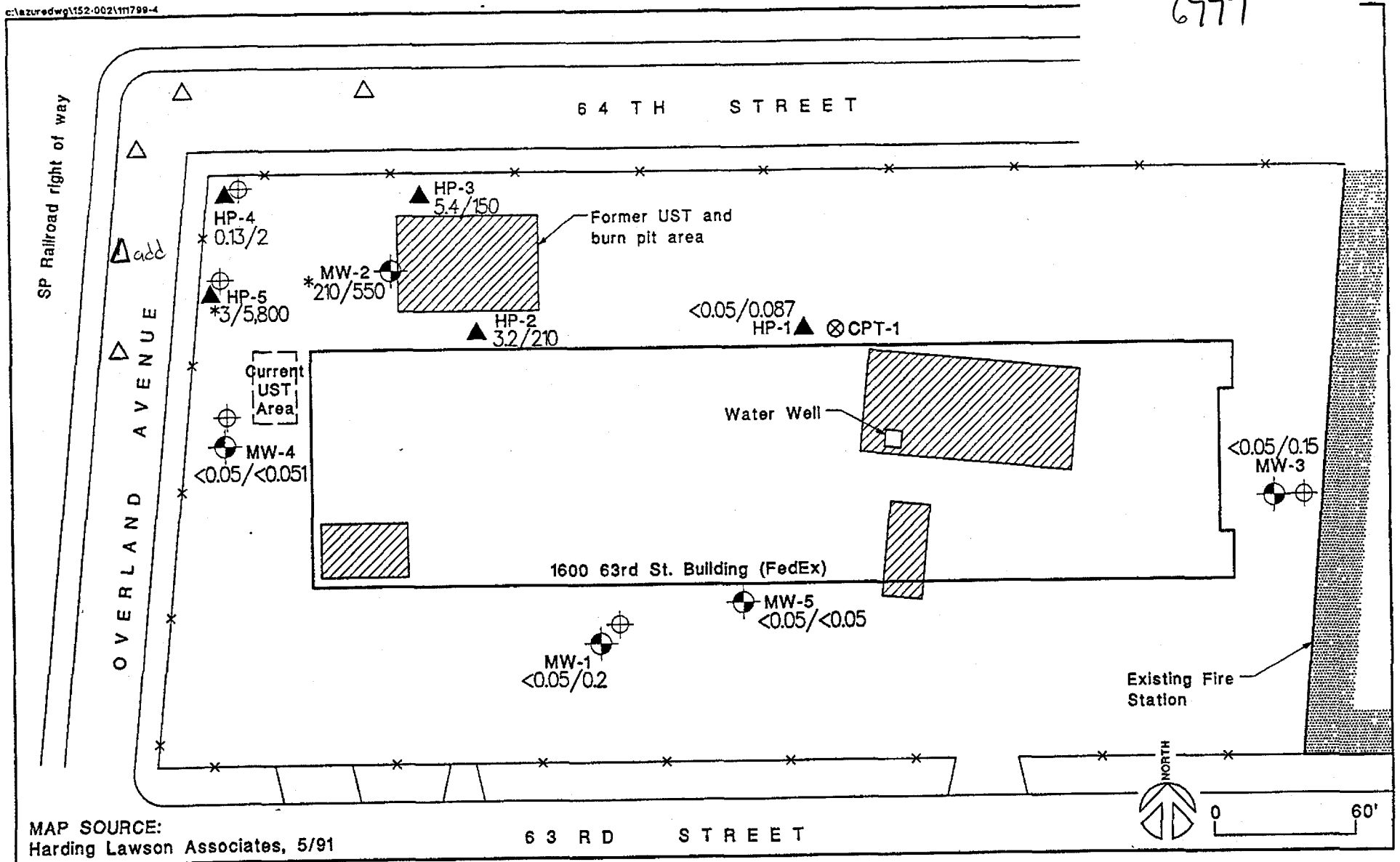
Footnotes:
 (1) Laboratory reported that the analyte detected in samples did not match the laboratory standard.

TABLE I
SUMMARY OF HISTORICAL SOIL SAMPLE RESULTS
1600 63rd Street, Emeryville, CA

Sample No.	Date Sampled	Depth (below ground surface)	Notes	Chemical Concentrations Detected (mg/kg)									
				TOG	TPHg	TPHd	TPH	Benzene	Toluene	Ethylbenzene	Total Xylenes	PCBs	TFH (Modified 8015)
Kaldveer													
EB-1	3/30/1987	3.0		--	1,600	380	--	--	--	--	--	--	--
EB-2	3/30/1987	2.5		ND (1)	--	--	--	--	--	--	--	--	--
EB-3	3/30/1987	3.0		120 (1)	--	--	--	--	--	--	--	--	--
EB-4	3/30/1987	4.5	(2)	--	--	--	--	0.006	0.011	ND	ND	--	ND
EB-5	3/30/1987	6.0		1,300	--	--	--	--	--	--	--	--	ND
EB-6	3/30/1987	7.5		190 (1)	ND	--	--	--	--	--	--	--	--
Engineering Science													
BH-1	9/2/1987	2.5, 6.5 Composite		4,800	--	--	1,900	--	--	--	--	--	--
BH-3	9/8/1987	1.0		100	--	--	<100	--	--	--	--	--	--
BH-4	9/2/1987	2.5, 4.5 Composite		--	1,300	--	--	--	--	--	--	--	--
BH-5	9/2/1987	2.5, 6.0 Composite		--	1,300	ND	--	--	--	--	--	--	--
BH-6	9/2/1987	1.0, 3.5 Composite		--	17	--	--	--	--	--	--	--	--
BH-7	9/8/1987	3.5, 9.5 Composite		--	--	20	--	--	--	--	--	ND	--
BH-8	9/8/1987	2.5, 6.0, 9.0 Composite		<100	--	--	<100	--	--	--	--	ND	--
BH-9A	9/9/1987	5.5, 10.0 Composite		--	--	16	--	--	--	--	--	ND	--
BH-10	9/9/1987	2.5		<100	--	--	<100	--	--	--	--	--	--
ES/MW-1	11/5/1987	5.0	(5)	--	360	(6)	--	0.7	0.8	--	1.2	--	--
ES/MW-2	11/6/1987	5.0		<250	--	--	<250	--	--	--	--	--	<10
ES/MW-3	1/6/1988	4.5	(2)	--	--	--	1,100	ND	0.6	ND	ND	<0.3	--
Peterson-ASP	5/6/1988	2.0	(2) (4)	--	--	--	43,000	--	--	--	0.71	ND	--
WPRS-C	5/11/1988	0.5 Composite 100-ft grid	(2) (3)	--	--	--	--	ND	ND	ND	ND	0.042	--
Harding Lawson													
MW-2	5/1/1989	5.0	(7)	--	15	212	--	<0.005	<0.005	<0.005	<0.005	ND	--
		9.5	(7)	--	<10	<10	--	<0.005	<0.005	<0.005	<0.005	ND	--
Certified													
B1	7/13/1994	12.0		--	<2	<2	--	0.011	0.1	0.14	0.26	--	--
B2	7/13/1994	12.0		--	<2	<2	--	0.013	0.038	0.04	0.12	--	--
B3	7/13/1994	12.0		--	<2	<2	--	0.01	0.1	0.14	0.47	--	--
B4	7/13/1994	12.0		--	<2	<2	--	<0.005	0.018	0.017	0.1	--	--
ESL				1,000	400	500	400	0.38	9.3	32	11	0.74	

Notes:

- mg/kg = milligrams per kilogram
 TOG = Total Petroleum Hydrocarbons as Oil and Grease
 TPHg = Total Petroleum Hydrocarbons as Gasoline.
 TPHd = Total Petroleum Hydrocarbons as Diesel.
 TPH = Total Petroleum Hydrocarbons
 PCBs = Polychlorinated Biphenyls
 MTBE = Methyl-tert-butyl ether
 -- = Not Analyzed.
 ND = Not Detected.
 < = Below Specified Reporting Limits.
 ESL = Environmental Screening Level, Shallow Soil, Groundwater is not a source of drinking water, Commercial/Industrial Land Use (RWQCB 2005)
 1,300 - Bold entries exceed the Environmental Screening Levels
- (1) GC/FID Waste Oil Standard
 (2) Other EPA 8240 analytes not detected
 (3) Composite soil sample collected at roughly a 100 foot grid across the site from approximately 3 to 6 inches below the surface.
 (4) 440 ppm lead, 6.1 ppm flourene, 19 ppm phenanthrene, 7.7 ppm flouranthene, 16 ppm pyrene, 23 ppm chrysene, 9.6 ppm benzo(a)anthracene detected.
 (5) 4.9 ppm lead detected.
 (6) Result reported as gasoline and diesel.
 (7) Other EPA 8010, 8020, 8270 and 8080 analytes not detected.



EXPLANATION:

- Monitoring Well
- August 1999 Groundwater Grab Sample Location
- CPT Sampling Location
- Proposed Monitoring Well Location
- Proposed Groundwater Grab Sample Location
- Soil and Tank Excavation Areas
- TPHgas (ppm)
- TPHdiesel (ppm)
- * Product observed in sample

Figure 4: Proposed Additional Groundwater Sampling and Monitoring Well Locations

SOMA CORPORATION

CONFIDENTIAL

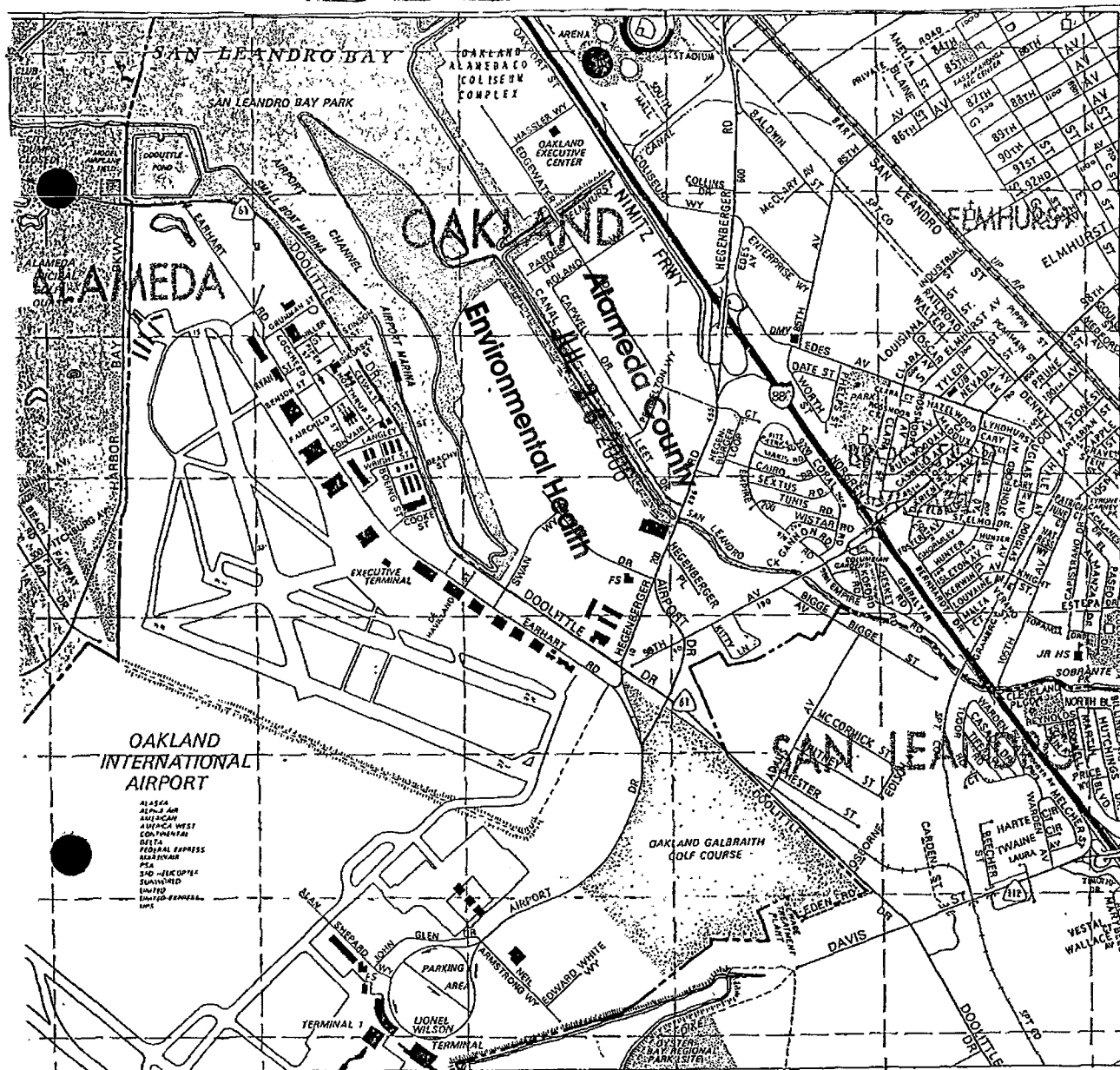
STATE OF CALIFORNIA DWR
WELL COMPLETION REPORT
(WELL LOGS)

REMOVED

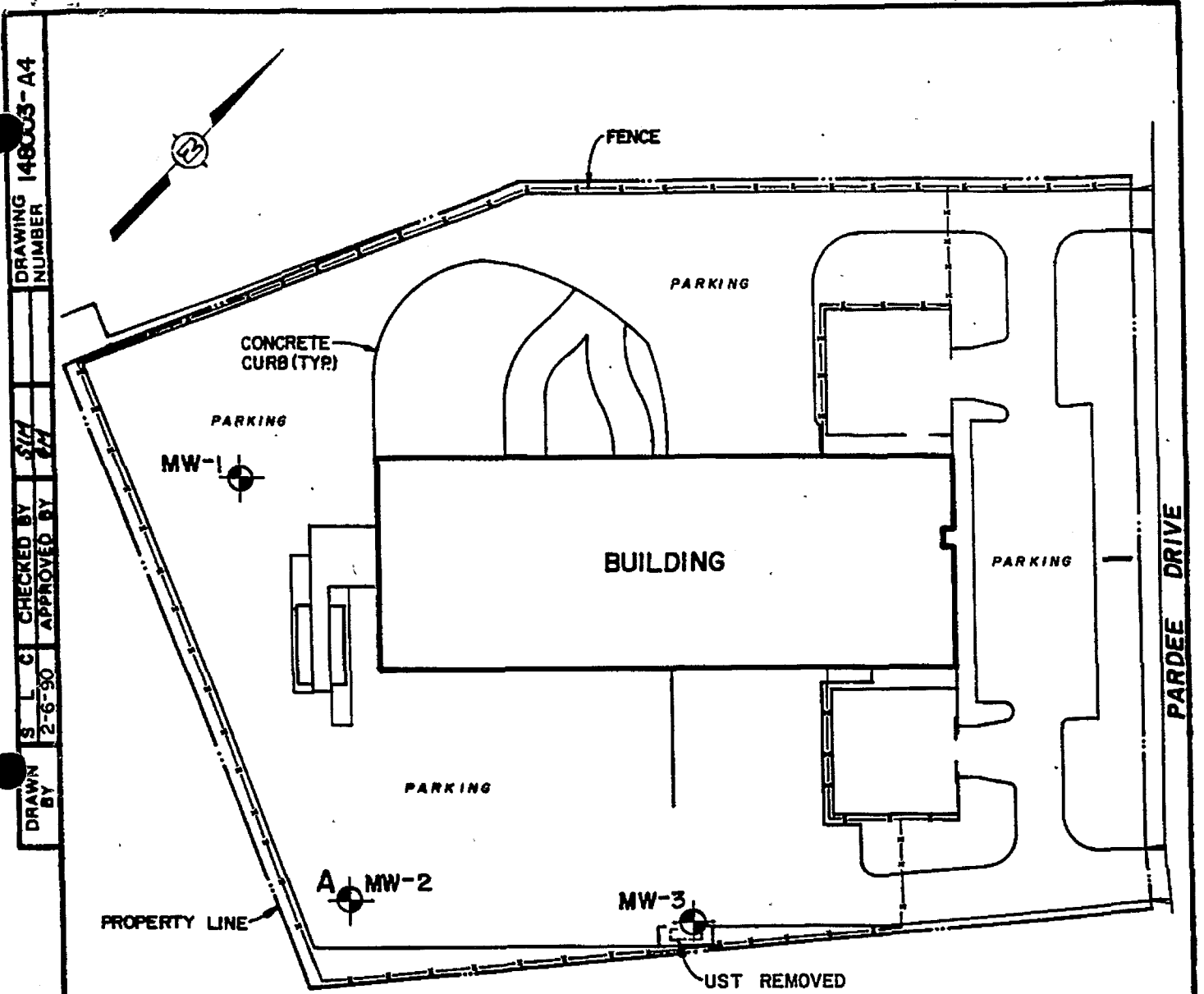
CONFIDENTIAL

STATE OF CALIFORNIA DWR
WELL COMPLETION REPORT
(WELL LOGS)

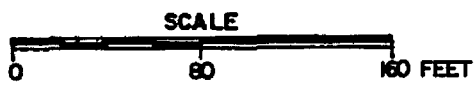
REMOVED



310415



DRAWING NUMBER 148003-A4
 DRAWN BY S L C
 CHECKED BY S/C
 APPROVED BY P/P
 2-6-90



LEGEND

 MW-2 MONITORING WELL

REFERENCE:
 JORDAN, CASPER, WOODSON, DOBSON
 DRAWING NO. W84071 SHT. 1
 DATE - 5/29/84 SCALE - 1" = 20'

FIGURE 2
SITE PLAN
FEDERAL EXPRESS
8455 PARDEE DRIVE
OAKLAND, CALIFORNIA
 PREPARED FOR
FEDERAL EXPRESS
SACRAMENTO, CALIFORNIA

148404
 © 1984 IT CORPORATION
 ALL COPYRIGHTS RESERVED



Plotted
CONFIDENTIAL LOG
Water Code Sec. 13752

NOTICE OF INTENT NO. 81145

STATE OF CALIFORNIA
THE RESOURCES AGENCY

Do Not Fill In

ORIGINAL
File with DWR

DEPARTMENT OF WATER RESOURCES
WATER WELL DRILLERS' REPORT

No 88207
State Well No. 253W-21J2
Other Well No. 253W 21J280

(1) OWNER:

Name Delaval Turbine, Inc.
Address Box 12938, Oakland, CA 94604

(11) WELL LOG:

Total depth 448 ft. Depth of completed well 430 ft.

Formation: Describe by color, character, size of material, and structure

ft. to ft.

(2) LOCATION OF WELL:

County Alameda Owner's number, if any

Township, Range, and Section

Distance from cities, roads, railroads, etc. 550 - 85th Avenue
Oakland, CA

0 to 71 Top Soil

71 75 Gravel

75 87 Brown Clay

87 114 Blue Clay & Sea Shell

114 126 Gravel & Big Rocks

126 145 Brown Clay

145 155 Gravel

155 184 Brown Clay

184 193 Gravel

193 196 Brown Clay

196 209 Gravel

209 230 Yellow Clay

230 240 Gravel

230 264 Yellow Clay

264 280 Blue Clay

280 282 Gravel

282 312 Yellow Clay

312 337 Gravel

337 402 Yellow Clay

402 403 Gravel

403 404 Yellow Clay

404 421 Gravel

421 448 Yellow Clay

(3) TYPE OF WORK (check):

New Well Deepening Reconditioning Destroying

If destruction, describe material and procedure in Item 11.

(4) PROPOSED USE (check):

Domestic Industrial Municipal

Irrigation Test Well Other

(5) EQUIPMENT:

Rotary

Cable

Other

(6) CASING INSTALLED:

STEEL: OTHER:
SINGLE DOUBLE

If gravel packed

From ft.	To ft.	Diam.	Gage or Wall	Diameter of Bore	From ft.	To ft.
0	70	20"	1/4	26"	0	430
0	430	12"	3/16			

Size of shoe or well ring:

Size of gravel:

Describe joint Weld Collar

(7) PERFORATIONS OR SCREEN:

Type of perforation or name of screen

From ft.	To ft.	Perf. per row	Rows per ft.	Size in. x in.
240	130	10	6	5/32

(8) CONSTRUCTION:

Was a surface sanitary seal provided? Yes No To what depth 70 ft.

Were any strata sealed against pollution? Yes No If yes, note depth of strata

From 200 ft. to 230 ft.

From 140/122 ft. to 180/138 ft.

Method of sealing Cement

Work started 4/7 1976, Completed 6/16 1976.

WELL DRILLER'S STATEMENT:

This well was drilled under my jurisdiction and this report is true to the best of my knowledge and belief.

(9) WATER LEVELS:

Depth at which water was first found, if known ft.

Standing level before perforating, if known ft.

Standing level after perforating and developing 59 ft.

NAME Western Well Drilling Co., Ltd.

(Person, firm, or corporation) (Typed or printed)

Address P.O. Box 109, San Jose, CA 95103

(10) WELL TESTS:

Was pump test made? Yes No If yes, by whom? Contractor

Yield: 930 gal./min. with 161 ft. drawdown after 72 hrs.

Temperature of water Was a chemical analysis made? Yes No

Was electric log made of well? Yes No If yes, attach copy

[SIGNED] *[Signature]*
(Well Driller)

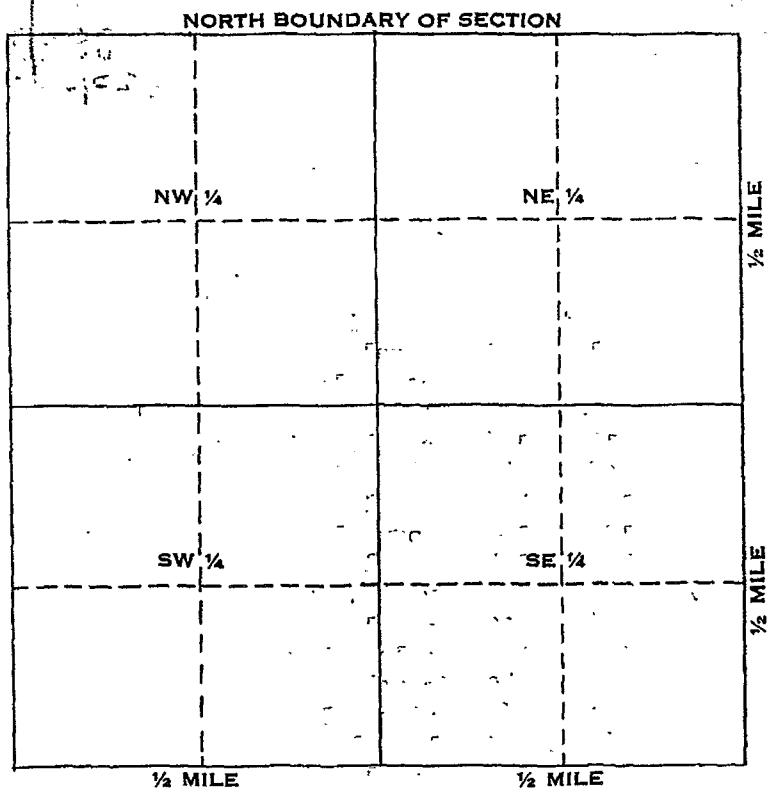
License No. 25182 Dated Oct. 26, 1976.

SKETCH LOCATION OF WELL ON REVERSE SIDE

CONFIDENTIAL LOG
Water Code Sec. 13752

WELL LOCATION SKETCH

88207

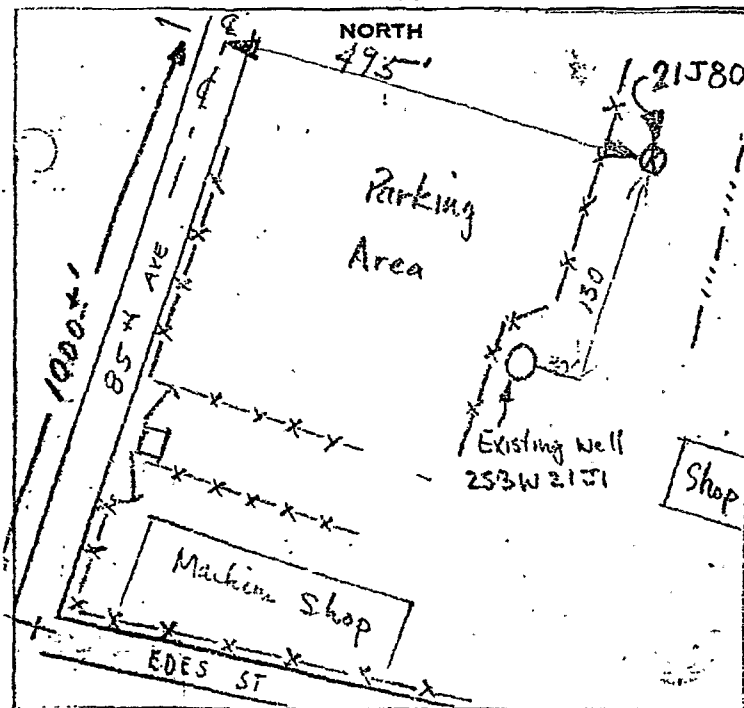


Township _____ N/S

Range _____ E/W

Section No. _____

- A. Location of well in sectionized areas.
Sketch roads, railroads, streams, or other features as necessary.



- B. Location of well in areas not sectionized.
Sketch roads, railroads, streams, or other features as necessary.
Indicate distances.

1976 OCT 28 PM 12:11

DEPARTMENT OF WATER RESOURCES

NOV 03 1977

REGION _____

STATE OF CALIFORNIA

01-1323

SIN _____ R

DEPARTMENT OF WATER RESOURCES

DWR NO. 25/31-21

B & H

COUNTY _____

OTHER NOS. JOA #611

NEAR _____

WELL LOG

JOA #611

LOCATION _____

OWNER Stonocourt Nursery
K. Korematsu

ADDRESS Edis Avenue

DRILLED BY J. W. Ough

ADDRESS _____

DRILLING METHOD _____ GRAVEL PACKED _____ DATE COMPLETED _____

SIZE OF CASING DEPTH 91' of 12" #16 D B Casing STRUCK WATER AT _____

PERFORATIONS 10' SIZE _____ NO. _____

WATER LEVEL BEFORE PERFORATING _____ AFTER 23

TEST DATA: DISCHARGE G. P. M. _____ DRAWDOWN FT. _____ HOURS RUN _____

OTHER DATA AVAILABLE: WATER LEVEL RECORD _____ ANALYSIS _____

SURFACE ELEV. _____ DATUM _____ SOURCE OF INFORMATION _____

FOR FIELD COPIES USE ALTERNATE LINES

DEPTH	ELEV. OF BOTTOM OF STRATUM	MATERIAL	THICK-NESS	SP. YIELD %
5		Black soil		
9		Sandy clay		
10		Gravel		
19		Yellow clay		
61		Gravel		
69		Hard sand		
75		Gravel		
89		blue sandy sediment		
91		Blue clay		

LOG OBTAINED BY _____ DATE _____ SHEET 1 OF _____

12
01-1324

Job 1872. Stonehurst Nursery,
K. Korematsu, Des Ave.

LOG OF WELL.

Black soil -----	2 feet,
Hard brown clay -----	2 to 5 "
Hard yellow clay -----	5 " 18 "
Soft yellow clay -----	18 " 28 "
Coarse water gravel -----	28 " 35 "
Hard yellow clay -----	35 " 47 "
Coarse water gravel -----	47 " 68 "
Hard yellow sand clay -----	68 " 70 "

20 ft. perforated casing,
50 ft. plain casing,

21 ft. to water.

ORIGINAL
File Original, Duplicate and Triplicate with the
DIVISION OF WATER RESOURCES
P. O. BOX 1079
SACRAMENTO 5, CALIFORNIA

WATER WELL DRILLERS REGISTRATION NO. 01-1325

Do Not Fill In 7

(Sections 7076, 7077, 7078, Water Code)

STATE OF CALIFORNIA—DEPARTMENT OF PUBLIC WORKS

DIVISION OF WATER RESOURCES

Well No. _____

Other Well No. _____

Region _____

(1) DRILLER: (person, firm, or corporation)

Name Roscoe Moss Company

Address 4260 Worth Street,
Los Angeles, California.

OWNER:

Name General Metals Corporation

Address Oakland, California.

(2)	Proposed Use (Check)		Equipment	
Domestic	<input type="checkbox"/>	Industrial <input checked="" type="checkbox"/>	Rotary	<input type="checkbox"/>
Irrigation	<input type="checkbox"/>	Test Well <input type="checkbox"/>	Cable	<input checked="" type="checkbox"/>
Municipal	<input type="checkbox"/>	Other <input type="checkbox"/>	Dug Well	<input type="checkbox"/>
			Other	<input type="checkbox"/>

(3) CASING:

ft. of	in	ft./sq. casing	and	left in well
600	14	8	Conductor pipe and	" "
170	24	8	Conductor pipe and	" "
"	"	"	"	" "
"	"	"	"	" "
"	"	"	"	" "

Type and size of shoe or well ring _____

(4) PERFORATIONS:

Type of perforator used Moss Hydraulic

Perforated	ft. to	ft.	holes per	in.
200	584	7	8	"
"	"	"	"	"
"	"	"	"	"
"	"	"	"	"
"	"	"	"	"
"	"	"	"	"
"	"	"	"	"
"	"	"	"	"
"	"	"	"	"
"	"	"	"	"
"	"	"	"	"

Diameter of perforations 3/16 in., length 1-1/2 in.

(5) WATER LEVELS:

Was electric log made of well? Yes No If yes, attach copy.

Depth at which water was first found 6 ft.

Standing level before perforating 70 ft.

Standing level after perforating 62 ft.

Note your observation of any change in water level while drilling _____

Was a surface sanitary seal provided? _____

(6) WELL PUMPING TEST:

Capacity 1060 gal./min. 71 ft. draw down

Was well gravel packed? 96 tons of gravel installed

Were any strata sealed against pollution? _____

Temperature _____ Was a chemical analysis made? Attach copy

If abandoned was well capped? _____

(7) TYPE OF WORK (check):

New well Reconditioning of well
Deepening existing well

(8) LOCATION OF WELL: 2S/3W21

County San Francisco ALAMEDA

R. F. D. or Street No. Inside Plant, at Edes and 85th Street, Oakland, California.

(9) WELL LOG:

Total depth of well 600 ft.

Formation: Mention size of water gravel—

0	ft. to	8	ft.	Formation
0	8			Fill and top soil
8	22			Brown clay
22	26			Sand and gravel
26	88			Clay and gravel
88	115			Blue clay
115	158			Brown clay and gravel
158	200			Brown clay
200	240			Brown clay with stks of gravel
240	324			Brown clay
324	329			Tight gravel to 3"
329	375			Brown clay and gravel
375	398			Gray clay
398	404			Tight gravel to 1"
404	410			Clay
410	419			Tight gravel
419	560			Clay
560	564			Tight gravel
564	600			Brown clay

FOR OFFICIAL USE ONLY

Work started 9-6-52 19 , Completed 10-14-52 19
Date of Report 10-14-52 , 19

WELL DRILLER'S STATEMENT:

This well was drilled under my jurisdiction and this report is true to the best of my knowledge and belief.

[SIGNED] ROS COE MOSS COMPANY

R. A. Ramsey
Well Driller
Secretary

License No. 624 Classification C 57

Dated October 29th 1952

46370 7-51 30M QUIN © SPO

PROJECT ▷ UB - HEGENBERGER



PROJECT NUMBER ▷ A922358

LOGGED BY ▷ ALEX J. GALLEGO

START DATE ▷ 17 September 1992

CHECKED BY ▷ FRED R. CONWELL

COMPLETION DATE ▷ 17 September 1992

GROUND SURFACE ELEVATION DATUM (FT-MSL) ▷ 10.2

DRILLING COMPANY ▷ WEST HAZMAT DRILLING

DRILLING EQUIPMENT ▷ MOBILE DRILL B62

BORING DEPTH (FT) ▷ 20.0

WELL DEPTH (FT) ▷ 19.0

WATER DEPTH (FT)-Initial: 7.5 Completion: 7.7

WELL MATERIALS ▷ 4" SCH. 40 PVC W/ 0.020" SLOT

WELL SCREEN INTERVAL (FT) ▷ 4.0 TO 19.0

WELL CASING ELEVATION (FT-MSL) ▷ 9.8

OVM/OVA ▷ HnU WITH A 10.2 eV PROBE

BACKFILL MATERIAL ▷ #3 LONESTAR SAND/BENTONITE PELLETS/CEMENT GROUT

DEPTH (FT)	LITHOLOGY DESCRIPTION	GRAPHIC WELL	BLOW COUNT	SAMPLE			COMMENTS
				OVM/OVA (PPM)	RECOVERY %	TYPE NUMBER	
0	Asphalt						
	Olive grey (5Y 3/2), damp, Clayey SILT (ML) with fine to medium sand and fine gravel						Hit concrete or asphalt @ 2.5 feet; seem to be through it by 4.0
23			23	1	100	MW1-1-2	
5	Decrease in sand and gravel; and dusky green (5G 3/2) mottling at 6.5 feet		8	<1	100	MW1-2-2	Six inch silty sand lens at 5.5 feet
10	Black (n1) wet, soft CLAY (CL)		6	<1	100	MW1-3-2	Organic material associated with bay mud
15	Dark yellowish orange (10YR 6/6), moist, very stiff Silty CLAY (CL)		32	<1	100	MW1-4-2	
20	Bottom of boring at 20.0 feet		28	<1	100	MW1-5-2	

BORING DESIGNATION
MW1**BORING LOG**PAGE NUMBER
1 OF 1

FIGURE NUMBER

Owner: Union Bank

1626

SINGLE COMPLETION WELL DETAILS

PROJECT NUMBER: A922358

PROJECT NAME: UB-Hegenberger

COUNTY: Alameda

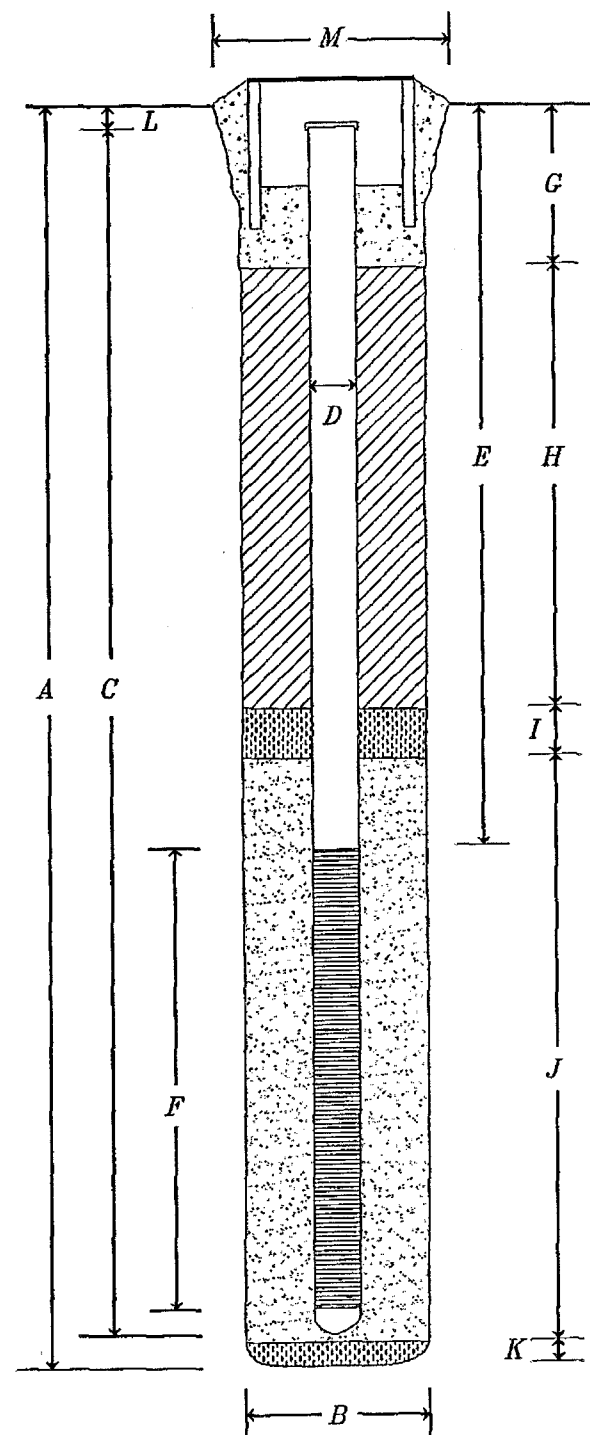
WELL PERMIT NO.: 92456

BORING/WELL NO.: MW1

TOP OF CASING ELEV.: 9.80

GROUND SURFACE ELEV.: 10.20

DATUM: Mean Sea Level



EXPLORATION BORING

A. Total Depth 20.0 ft.
 B. Boring Diameter 10.0 in.
 Drilling Method Hollow Stem Auger

WELL CONSTRUCTION

C. Casing Length 18.5 ft.
 Material Sch. 40 PVC
 D. Diameter 4.0 in.
 E. Depth to Top of Perforations 4.0 ft.
 F. Perforated Length 15.0 ft.
 Perforated Interval from 4.0 to 19.0 ft.
 Perforation Type Machine slot
 Perforation Size 0.020 Inch
 G. Surface Seal 1.0 ft.
 Seal Material Concrete
 H. Backfill 1.0 ft.
 Backfill Material Cement Grout
 I. Seal 1.0 ft.
 Seal Material Bentonite Pellets
 J. Gravel Pack 16.0 ft.
 Material #3 Lonestar Sand
 K. Bottom Seal n/a ft.
 Material n/a
 L. Top of Casing Depth 6.0 in.
 M. Protective Cover Diameter 12.0 in.

APPLIED GEOSCIENCES INC.

Engineering Geology and Hazardous Materials Consultants

