

# FILE

## Erler & Kalinowski, Inc.

Consulting Engineers and Scientists

1730 So. Amphlett Blvd., Suite 320

San Mateo, California 94402

(415) 578-1172

Fax (415) 578-9131

18 December 1996

**RECEIVED**

*By lopprojectop at 1:57 pm, Jun 09, 2006*

Ms. Susan Hugo  
Senior Hazardous Materials Specialist  
Alameda County Department of Environmental Health  
1131 Harbor Bay Parkway  
Alameda, California 94502

Subject: Additional Groundwater Monitoring  
6601 and 6603 Bay Street, Emeryville, California  
(EKI 950074.00)

Dear Ms. Hugo:

On the basis of our meeting on 4 September 1996, Sybase, Inc. is planning to proceed with the additional work agreed upon at the meeting regarding the three former underground storage tanks ("USTs") at the 6601 and 6603 Bay Street properties in Emeryville, California. As discussed at our meeting, Erler & Kalinowski, Inc. ("EKI"), on behalf of Sybase, Inc., will perform two additional rounds of groundwater monitoring well sampling and analyses to demonstrate that concentrations of chemicals of concern in groundwater continue to be stable or decreasing. Assuming the results continue to show that a stable or decreasing trend persists, Sybase, Inc. will then request closure of the former USTs.

The groundwater monitoring well sampling includes collecting groundwater samples from wells MW-5 and MW-7, located downgradient of the former USTs (Figure 1). Groundwater samples will be analyzed for total extractable petroleum hydrocarbons quantified as diesel (EPA Method 8015 Modified), total purgeable petroleum hydrocarbons (EPA Method 8015 Modified), and benzene, toluene, ethylbenzene, xylenes, and methyl tertiary butyl ether (EPA Method 8020).

After each round of groundwater sampling, EKI will submit a report to you with the results of the chemical analyses. If chemical concentrations continue to show a stable or decreasing trend, the second report will also include the following: (1) a discussion that shows that the site is of low risk and (2) a request for closure of the former USTs.

As discussed in our September meeting, the first round of groundwater monitoring well sampling will be performed on 26 or 27 December 1996 and the second round will be performed in June 1997.

Ms. Susan Hugo  
18 December 1996  
Page 2

**Erlar &  
Kalinowski, Inc.**

Please call me or Dave Tricaso at Sybase, Inc. with any questions.

Very truly yours,

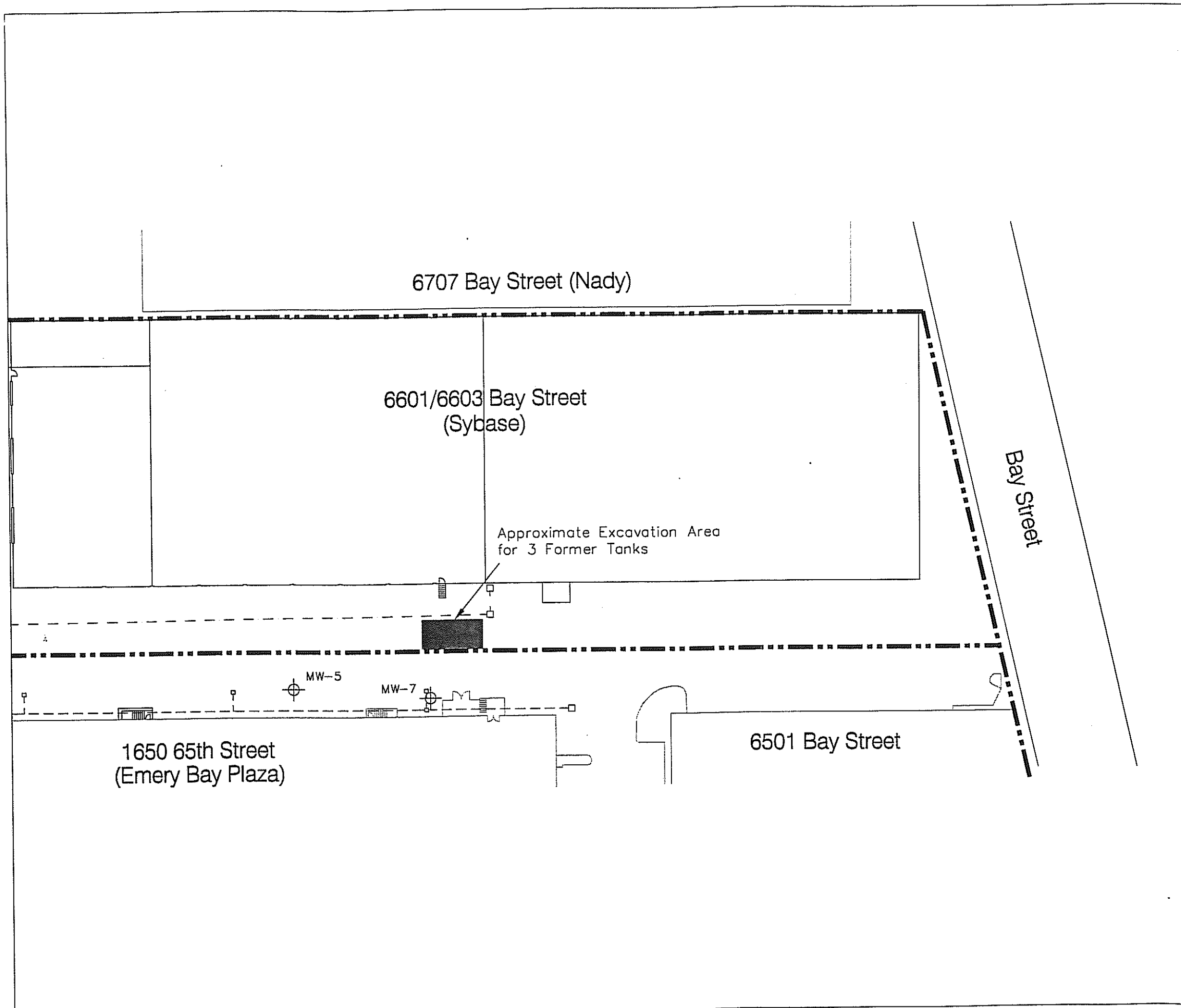
ERLER & KALINOWSKI, INC.



Michelle Kriegman King, Ph.D.  
Project Manager

Attachment: Figure

cc: David Tricaso, Sybase, Inc.



**LEGEND**

- Property Boundary
- - - Sanitary Sewer Line
- - - Storm Drain Line
- ⊕ Off-Site Monitoring Well Location
- Approximate Excavation Area

**Notes:**

1. All locations are approximate.
2. Base map digitized from Alta Land Survey Title Map.

**Erlor &  
Kalinowski, Inc.**

Monitoring Well Locations

6601/6603 Bay Street  
Emeryville, CA  
November 1996  
EKI 950074.03  
Figure 1