

10-12-1997

Seeps of oil coming from sidewall of



excavation west of former gas USTs.



→

area of fault hydraulic lift

↖ ↗ ↘ ↙



Area of two former concrete vaults

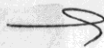
area of hydraulic lift →



→

6-12-97

Gravel backfill



Grand Ave





GeoPlexus, Inc.

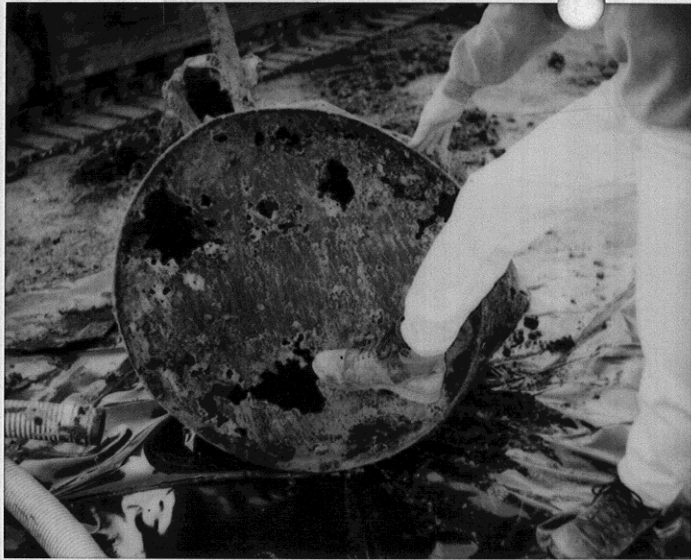
David C. Glick, R.G., C.E.G.
Director of Geological and
Environmental Services

1900 Wyatt Drive, Suite 1
Santa Clara, California 95054
Phone 408/987-0210 • FAX 408/988-0815



11-17-94 4K UST pit
JE 6BMUD
1200-21st St, Oak.

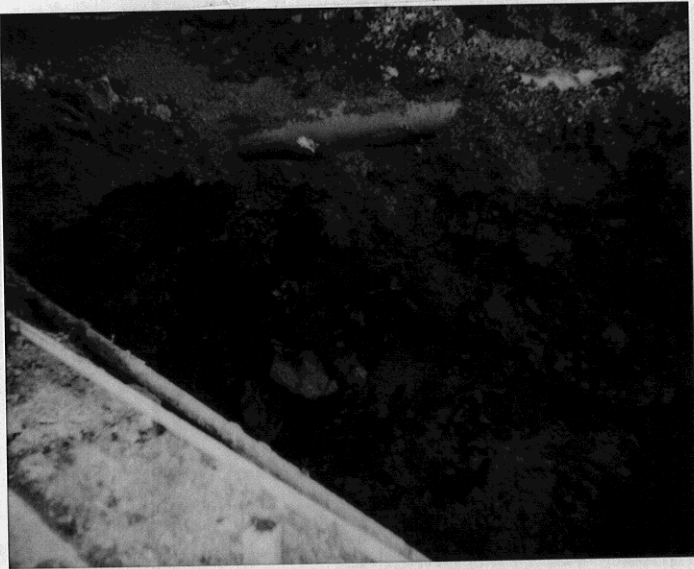




6th UST.







EBMUO 1200-215151
-07



