

RECEIVED

3:07 pm, Nov 30, 2010

Alameda County
Environmental Health

November 22, 2010
Project No. 07-131

Alameda County Department of Environmental Health
1131 Harbor Bay Park Way
Alameda, California 94502

Attention: Mark Detterman, PG, CEG
Hazardous Materials Specialist

SITE: FORMER EZ-SERVE LOCATION 100877
525 WEST A STREET
HAYWARD, CALIFORNIA
FUEL LEAK CASE NO. RO0000023

RE: Semi-Annual Groundwater Monitoring and Sampling
Third Quarter 2008 (3Q08) October 15, 2008

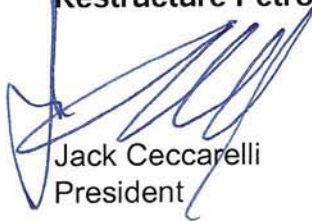
Dear Mr. Detterman:

I declare under penalty of perjury that to the best of my knowledge, the information and/or recommendations contained in the attached report is/are true and correct.

Please contact us with questions at (813) 636-8111 #100 or jackc@edifl.com.

Sincerely,

Restructure Petroleum Marketing Services of California



Jack Ceccarelli
President

GEOENVIRO SERVICES, INC.

October 15, 2008
Project No. 07-131

Alameda County Department of Environmental Health
1131 Harbor Bay Park Way
Alameda, California 94502

Attention: Steven Plunkett
SITE: FORMER EZ-SERVE LOCATION 100877
525 WEST A STREET
HAYWARD, CALIFORNIA
ACDEH CASE NO. 3580
RE: GROUNDWATER MONITORING AND SAMPLING REPORT
THIRD QUARTER 2008 (3Q08)

Dear Mr. Plunkett:

GeoEnviro Services Inc. (GESI) has prepared this report on behalf of Restructure Petroleum Marketing Services (RPMS) to document quarterly groundwater monitoring activities completed during the Third Quarter 2008 (3Q08) at the Former EZ-Serve No. 100877 located at 525 West A Street, Hayward, California. Groundwater monitoring and sampling for 3Q08 was completed on August 27, 2008. The results are summarized on the attached summary, tables, and figures.

General field procedures are included in Attachment A. Groundwater monitoring and sampling field documentation are included in Attachment B. Copies of the laboratory analytical reports along with chain of custody documentation are included in Attachment C. Geotracker submittal documentation is included in Attachment D.

If you have any questions regarding this report, please contact me at joe@geoenviroservices.com.

Sincerely,

GEOENVIRO SERVICES, INC.

Joseph P. Schaaf, P.G., C.Hg.
Principal Geologist



cc: Mr. Jack Ceccarelli, Restructure Petroleum Marketing Services of CA
Mr. Aziz Kandahari, KB Chevron, Property Owner
State Water Resources Control Board, UST Cleanup Fund

EZ-SERVE 100877
GROUNDWATER MONITORING AND SAMPLING, THIRD QUARTER 2008
October 15, 2008

ATTACHMENTS:

Project and Quarterly Monitoring Data Summary

Table 1: Fluid Level Monitoring Data

Table 2: Results of Laboratory Analysis of Groundwater Samples

Figure 1: Site Location Map

Figure 2: Site Map with Contours of Groundwater Elevation, Third Quarter 2008

Figure 3: Site Map with Contours of TPHg Concentrations in Groundwater
Third Quarter 2008

Figure 4: Site Map with Contours of Benzene Concentrations in Groundwater
Third Quarter 2008

Figure 5: Site Map with Contours of MTBE Concentrations in Groundwater
Third Quarter 2008

Attachment A: General Field Procedures

Attachment B: Groundwater Monitoring and Sampling Field Data Sheets

Attachment C: Laboratory Analytical Reports and Chain of Custody Documentation

Attachment D: Geotracker Submittal Documentation

LIMITATIONS

This letter-report has been prepared at the request of Restructure Petroleum Marketing Services of California for submittal to the Alameda County Department of Environmental Health. In performing our professional services, we have attempted to apply present engineering and scientific judgment and use a level of effort consistent with the standard of practice measured on the date of work and in locale of the project site for similar type studies. GeoEnviro Services, Inc. makes no warranty, express or implied.

The analyses and interpretations presented in this report have been developed based on the results from the review of existing information pertaining to the Project Site and the results from the laboratory analyses of the groundwater samples collected from discrete locations. It should be recognized that groundwater contamination can vary between sampling locations and between monitoring events.

FORMER EZ SERVE 100877, ACDEH CASE No. 3580
525 WEST A STREET, HAYWARD CALIFORNIA
GROUNDWATER MONITORING AND SAMPLING, THIRD QUARTER 2008
 October 15, 2008

PROJECT AND QUARTERLY GROUNDWATER MONITORING DATA SUMMARY

SITE INFORMATION

Location/Address:	Former EZ Serve 100877, 525 West A Street, Hayward, California
Owner/RP:	Restructure Petroleum Marketing Services (RPMS)
Address	9519 E. M L King Blvd., Suite 100, Tampa, Florida 33610
Consultant :	GeoEnviro Services, Inc. Joseph P. Schaaf, P.G., C.Hg.
Consultant Phone/Fax/email:	(805) 642-1668 / (805) 642-9331 / joe@geoenviroservices.com

PROJECT INFORMATION

GW Monitoring Start Date:	1992
Nature of GW Impacts:	UST release of gasoline to soil and groundwater
Number of onsite wells :	7 GW Monitoring 3 Vapor Extraction 1 GW Extraction
Number of offsite wells :	5 GW Monitoring
Site Well Identification:	MW-1, MW-1A, MW-3 through MW-6, MW-8 through MW-10, MW-12, and MW-14. VEAS-1 through VEAS-3. EX-1
Current Remedial Phase:	Soil excavation activities were complete during recent station rebuild in 1Q08
Remediation Start Date:	To Be Evaluated
Remediation End Date:	To Be Evaluated
Site Access Information:	N/A

MONITORING ACTIVITY, THIRD QUARTER 2008

Dates of 3Q08 Monitoring Activities:	8/27/2008
Number of Wells Guaged:	9 total Wells MW-1, MW-1A, MW-3 through MW-5, MW-7, MW-12, MW-14, and EX-1
Number of Well Containing Free Product	0 Maximum F.P. Thickness: NA
Wells Sampled:	8 Wells Total: MW-1, MW-3 through MW-5, MW-7, MW-12, MW-14, and EX-1
Chemical Analyses:	U.S. EPA 8015M: TPH-g U.S. EPA 8260B: BTEX, Fuel Oxygenates
Laboratory Used:	Associated Laboratories, Orange, CA
Purge Method / Total Volume:	Submersible pump / 276 Gallons
Sample Method:	Dedicated disposable polyethelene bailer
Storage / Disposal Method:	55-Gallon DOT Drums / pending laboratory analyses results

HYDROGEOLOGIC CONDITIONS, 3Q08

GW Depth Range (feet bgs):	15.37 (MW-1) to 17.37 (MW-12)
Average GW Depth (feet bgs):	16.54
GW Elevation Range (feet amsl):	25.88 (MW-12) to 27.10 (MW-3)
Average Groundwater El. (feet amsl):	26.28
Average Change in GW Elevation:	1.34 foot decrease since Second Quarter 2008
Groundwater Gradient / Direction	0.008 feet/foot southwest

CHEMICALS OF CONCERN AND CONCENTRATIONS, 3Q08 (micrograms per liter [ug/L])

TPH-g: No. of wells detected / Range	6 of 8 wells / 348 ug/l (EX-1) to 4730 ug/l (MW-4)
Benzene: No. of wells detected / Range	5 of 8 wells / 0.9 ug/l (EX-1) to 72 ug/l (MW-4)
MTBE: No. of wells detected / Range	5 of 8 wells / 12 ug/l (MW-1) to 94 ug/l (EX-1)

QUARTERLY TREND ANALYSES / REMEDIAL PROGRESS

Concentrations of TPHg, BTEX and/or MTBE are generally higher at the locations of the Site wells than the concentrations recorded in 2Q08. Wells MW-3, MW-4, MW-5, and MW-7 showed an increase in TPHg concentrations; MW-3, and MW-5 showed an increase in Benzene; and MW-1, MW-3, MW-4, and MW-5 showed an increase in MTBE concentrations. The groundwater generally decreased in elevation since the second quarter 2008.

PROPOSED FUTURE WORK / RECOMMENDATIONS

Continued groundwater monitoring on quarterly basis. Preparation of Work Plan for Additional Site Assessment

TABLE 1
FLUID LEVEL MONITORING DATA
February 1992 through August 2008
EZ Serve 100877, 525 West A Street, Hayward, CA

Well ID	Date Monitored	Top of Casing Elevation* (feet)	Screen Interval (fbg)	Free Product	Depth to Water (feet)	Groundwater Elevation (feet)
MW-1	02/05/92	41.75	15-29	--	20.82	20.93
MW-1	09/11/92	41.75	15-29	--	20.08	21.67
MW-1	12/22/92	41.75	15-29	--	19.79	21.96
MW-1	03/03/93	41.75	15-29	--	16.23	25.52
MW-1	06/23/93	41.75	15-29	--	16.86	24.89
MW-1	09/30/93	41.75	15-29		18.04	23.71
MW-1	02/06/94	41.75	15-29	--	18.15	23.60
MW-1	05/02/94	41.75	15-29	--	17.26	24.49
MW-1	07/01/94	41.75	15-29	--	17.60	24.15
MW-1	09/20/94	41.75	15-29	--	20.59	21.16
MW-1	12/05/92	41.75	15-29	--	17.83	23.92
MW-1	03/10/95	41.75	15-29	--	14.67	27.08
MW-1	03/15/95	41.75	15-29	--	14.43	27.32
MW-1	09/23/96	41.75	15-29	--	14.92	26.83
MW-1	12/04/96	41.75	15-29	--	15.61	26.14
MW-1	04/08/97	41.75	15-29	--	13.25	28.50
MW-1	06/30/97	41.75	15-29	--	14.68	27.07
MW-1	11/25/97	41.75	15-29	--	15.99	25.76
MW-1	06/01/98	41.75	15-29	--	9.98	31.77
MW-1	06/14/01	41.75	15-29	--	15.05	26.70
MW-1	11/07/01	41.75	15-29	--	16.31	25.44
MW-1	01/30/02	41.75	15-29	--	14.15	27.60
MW-1	05/29/02	41.75	15-29	--	14.55	27.20
MW-1	08/14/02	41.75	15-29	--	15.56	26.19
MW-1	11/15/02	41.75	15-29	--	16.10	25.65
MW-1	10/25/04	41.75	15-29	--	15.99	25.76
MW-1	12/23/04	41.75	15-29	--	15.64	26.11
MW-1	02/25/05	41.75	15-29	--	12.79	28.96
MW-1	05/19/05	41.75	15-29	--	12.27	29.48
MW-1	09/15/05	41.75	15-29	--	14.30	27.45
MW-1	03/20/06	41.75	15-29		11.44	30.31
MW-1	05/25/06	41.75	15-29		11.05	30.70
MW-1	08/23/06	41.75	15-29		12.75	29.00
MW-1	03/14/07	41.75	15-29		13.12	28.63
MW-1	06/11/07	41.75	15-29		14.42	27.33
MW-1	08/01/07	41.75	15-29	--	14.97	26.78
MW-1	02/27/08	41.75	15-29	--	13.35	28.40
MW-1	05/13/08	41.75	15-29	--	14.51	27.24
MW-1	08/27/08	41.75	15-29	--	15.37	26.38
MW-1A	06/23/93	43.40	--	0.21	17.80	25.75
MW-1A	09/30/93	43.40	--	--	--	--
MW-1A	02/06/94	43.40	--	--	18.89	24.51
MW-1A	05/02/94	43.40	--	0.09	18.35	38.40
MW-1A	07/01/94	43.40	--	--	18.45	24.95
MW-1A	09/20/94	43.40	--	0.22	21.72	21.84
MW-1A	12/05/94	43.40	--	0.07	18.87	24.58

TABLE 1
FLUID LEVEL MONITORING DATA
February 1992 through August 2008
EZ Serve 100877, 525 West A Street, Hayward, CA

Well ID	Date Monitored	Top of Casing Elevation* (feet)	Screen Interval (fbg)	Free Product	Depth to Water (feet)	Groundwater Elevation (feet)
MW-1A	03/10/95	43.40	--	--	15.83	27.57
MW-1A	03/15/95	43.40	--	0.05	15.55	27.89
MW-1A	09/23/96	43.40	--	0.01	16.00	27.41
MW-1A	12/04/96	43.40	--	--	16.55	26.85
MW-1A	04/08/97	43.40	--	SHEEN	14.15	29.25
MW-1A	06/30/97	43.40	--	--	15.57	27.83
MW-1A	11/25/97	43.40	--	--	16.91	26.49
MW-1A	06/01/98	43.40	--	--	10.78	32.62
MW-1A	06/14/01	43.40	--	0.01	15.93	27.48
MW-1A	11/07/01	43.40	--	--	17.32	26.08
MW-1A	01/30/02	43.40	--	--	15.05	28.35
MW-1A	05/29/02	43.40	--	--	15.49	27.91
MW-1A	08/14/02	43.40	--	--	16.50	26.90
MW-1A	11/15/02	43.40	--	--	17.04	26.36
MW-1A	10/25/04	43.40	--	--	16.90	26.50
MW-1A	12/23/04	43.40	--	--	16.60	26.80
MW-1A	02/25/05	43.40	--	--	13.75	29.65
MW-1A	05/19/05	43.40	--	--	13.12	30.28
MW-1A	09/15/05	43.40	--	--	15.16	28.24
MW-1A	11/10/05	43.40	--	--	15.78	27.62
MW-1A	03/20/06	43.40	--	--	12.64	30.76
MW-1A	05/25/06	43.40	--	--	11.85	31.55
MW-1A	08/23/06	43.40	--	--	13.55	29.85
MW-1A	03/14/07	43.40	--	--	14.00	29.40
MW-1A	06/12/07	43.40	--	--	15.30	28.10
MW-1A	08/01/07	43.40	--	--	15.84	27.56
MW-1A	02/27/08	43.40	--	--	14.10	29.30
MW-1A	05/13/08	43.40	Well Not Accessable	--	--	--
MW-1A	08/27/08	43.40	Well Dry	--	--	--
MW-2	02/05/92	43.26	15-29	--	22.35	20.91
MW-2	09/11/92	43.26	15-29	--	21.67	21.59
MW-2	12/22/92	43.26	15-29	--	21.39	21.87
MW-2	03/03/93	43.26	15-29	--	17.75	25.51
MW-2	06/23/93	43.26	15-29	--	18.42	24.84
MW-2	09/30/93	43.26	15-29	--	19.63	23.63
MW-2	02/06/94	43.26	15-29	--	19.61	23.65
MW-2	05/02/94	43.26	15-29	--	19.84	23.42
MW-2	07/01/94	43.26	15-29	--	19.18	24.08
MW-2	09/20/94	43.26	15-29	--	22.17	21.09
MW-2	12/06/94	43.26	15-29	--	19.37	23.89
MW-2	03/10/95	43.26	15-29	--	16.33	26.93
MW-2	03/15/95	43.26	15-29	--	16.89	26.37
MW-2	09/23/96	43.26	15-29	--	16.61	26.65
MW-2	12/04/96	43.26	15-29	--	17.19	26.07
MW-2	04/08/97	43.26	15-29	--	14.86	28.40
MW-2	06/30/97	43.26	15-29	--	16.28	26.98

TABLE 1
FLUID LEVEL MONITORING DATA
February 1992 through August 2008
EZ Serve 100877, 525 West A Street, Hayward, CA

Well ID	Date Monitored	Top of Casing Elevation* (feet)	Screen Interval (fbg)	Free Product	Depth to Water (feet)	Groundwater Elevation (feet)
MW-2	11/25/97	43.26	15-29	--	17.56	25.70
MW-2	06/01/98	43.26	15-29	--	11.58	31.68
MW-2	06/14/01	43.26	15-29	--	16.63	26.63
MW-2	11/07/01	43.26	15-29	--	17.85	25.41
MW-2	01/30/02	43.26	15-29	--	15.65	27.61
MW-2	05/29/02	43.26	15-29	--	16.12	27.14
MW-2	08/14/02	43.26	15-29	--	17.20	26.06
MW-2	11/15/02	43.26	15-29	--	17.63	25.63
MW-2	10/25/04	43.26	15-29	--	17.53	25.73
MW-2	12/23/04	43.26	15-29	--	17.15	26.11
MW-2	02/25/05	43.26	15-29	--	14.30	28.96
MW-2	05/19/05	43.26	15-29	--	13.81	29.45
MW-2	09/15/05	43.26	15-29	Inaccessible due to temporary habitat		
MW-2	11/10/05	43.26	15-29	--	16.39	26.87
MW-2	03/20/06	43.26	15-29	--	13.00	30.26
MW-2	05/25/06	43.26	15-29	Destroyed on March 2, 2006		
MW-3	02/05/92	43.89	15-29	--	21.85	22.04
MW-3	09/11/92	43.89	15-29	--	21.13	22.76
MW-3	12/22/92	43.89	15-29	--	20.88	23.01
MW-3	03/03/93	43.89	15-29	--	17.29	26.60
MW-3	06/23/93	43.89	15-29	--	17.88	26.01
MW-3	09/30/93	43.89	15-29	--	19.18	24.71
MW-3	02/06/94	43.89	15-29	--	19.21	24.68
MW-3	05/02/94	43.89	15-29	--	18.30	25.59
MW-3	07/01/94	43.89	15-29	--	18.63	25.26
MW-3	09/20/94	43.89	15-29	--	21.64	22.25
MW-3	12/06/94	43.89	15-29	--	19.15	24.74
MW-3	03/10/95	43.89	15-29	--	16.33	27.56
MW-3	03/15/95	43.89	15-29	--	16.89	27.00
MW-3	09/23/96	43.89	15-29	--	16.11	27.78
MW-3	12/04/96	43.89	15-29	--	16.63	27.26
MW-3	04/08/97	43.89	15-29	--	14.25	29.64
MW-3	06/30/97	43.89	15-29	--	15.70	28.19
MW-3	11/25/97	43.89	15-29	--	16.99	26.90
MW-3	06/01/98	43.89	15-29	--	--	--
MW-3	06/14/01	43.89	15-29	--	16.02	27.87
MW-3	11/07/01	43.89	15-29	--	17.33	26.56
MW-3	01/30/02	43.89	15-29	--	15.10	28.79
MW-3	05/29/02	43.89	15-29	--	15.63	28.26
MW-3	08/14/02	43.89	15-29	--	16.63	27.26
MW-3	11/15/02	43.89	15-29	--	17.10	26.79
MW-3	10/25/04	43.89	15-29	--	17.01	26.88
MW-3	12/20/04	43.89	15-29	--	16.64	27.25
MW-3	02/25/05	43.89	15-29	Could not locate, VEAS-2 sampled instead		
MW-3	05/19/05	43.89	15-29	Could not locate, VEAS-2 sampled instead		
MW-3	09/15/05	43.89	15-29	--	Couldn't locate	--

TABLE 1
FLUID LEVEL MONITORING DATA
February 1992 through August 2008
EZ Serve 100877, 525 West A Street, Hayward, CA

Well ID	Date Monitored	Top of Casing Elevation* (feet)	Screen Interval (fbg)	Free Product	Depth to Water (feet)	Groundwater Elevation (feet)
MW-3	11/10/05	43.89	15-29	--	Couldn't locate	--
MW-3	03/20/06	43.89	15-29	--	12.44	31.45
MW-3	05/25/06	43.89	15-29	--	12.05	31.84
MW-3	08/23/06	43.89	15-29	--	13.75	30.14
MW-3	03/14/07	43.89	15-29	--	14.11	29.78
MW-3	06/12/07	43.89	15-29	--	15.43	28.46
MW-3	08/01/07	43.89	15-29	--	15.97	27.92
MW-3	02/27/08	43.89	15-29	--	14.40	29.49
MW-3	05/13/08	43.89	15-29	--	15.52	28.37
MW-3	08/27/08	43.89	15-29	--	16.79	27.10
MW-4	02/05/92	42.76	15-29	--	21.31	21.45
MW-4	09/11/92	42.76	15-29	--	20.62	22.14
MW-4	12/22/92	42.76	15-29	--	20.37	22.39
MW-4	03/03/93	42.76	15-29	--	16.78	25.98
MW-4	06/23/93	42.76	15-29	--	17.45	25.31
MW-4	09/30/93	42.76	15-29	--	18.64	24.12
MW-4	02/06/94	42.76	15-29	--	18.59	24.17
MW-4	05/02/94	42.76	15-29	--	17.81	24.95
MW-4	07/01/94	42.76	15-29	--	18.13	24.63
MW-4	09/20/94	42.76	15-29	--	21.13	21.63
MW-4	12/06/94	42.76	15-29	--	18.36	24.40
MW-4	03/10/95	42.76	15-29	--	15.25	27.51
MW-4	03/15/95	42.76	15-29	--	14.89	27.87
MW-4	09/23/96	42.76	15-29	--	15.56	27.20
MW-4	12/04/96	42.76	15-29	--	16.11	26.65
MW-4	04/08/97	42.76	15-29	--	13.73	29.03
MW-4	06/30/97	42.76	15-29	--	15.19	27.57
MW-4	11/25/97	42.76	15-29	--	16.49	26.27
MW-4	06/01/98	42.76	15-29	--	10.42	32.34
MW-4	06/14/01	42.76	15-29	--	15.55	27.21
MW-4	11/07/01	42.76	15-29	--	16.81	25.95
MW-4	01/30/02	42.76	15-29	--	14.60	28.16
MW-4	05/29/02	42.76	15-29	--	15.14	27.62
MW-4	08/14/02	42.76	15-29	--	16.07	26.69
MW-4	11/15/02	42.76	15-29	--	16.61	26.15
MW-4	10/25/04	42.76	15-29	--	16.50	26.26
MW-4	12/23/04	42.76	15-29	--	16.20	26.56
MW-4	02/25/05	42.76	15-29	--	13.30	29.46
MW-4	05/19/05	42.76	15-29	--	12.74	30.02
MW-4	09/15/05	42.76	15-29	--	14.80	27.96
MW-4	11/10/06	42.76	15-29	--	15.45	27.31
MW-4	03/20/06	42.76	15-29	--	11.93	30.83
MW-4	05/25/06	42.76	15-29	--	11.49	31.27
MW-4	08/23/06	42.76	15-29	--	13.23	29.53
MW-4	03/14/07	42.76	15-29	--	13.65	29.11
MW-4	06/12/07	42.76	15-29	--	14.92	27.84

TABLE 1
FLUID LEVEL MONITORING DATA
February 1992 through August 2008
EZ Serve 100877, 525 West A Street, Hayward, CA

Well ID	Date Monitored	Top of Casing Elevation* (feet)	Screen Interval (fbg)	Free Product	Depth to Water (feet)	Groundwater Elevation (feet)
MW-4	08/01/07	42.76	15-29	--	15.48	27.28
MW-4	02/27/08	42.76	15-29	--	Could not locate well	
MW-4	05/13/08	42.76	15-29	--	15.02	27.74
MW-4	08/27/08	42.76	15-29	--	16.28	26.48
MW-5	02/05/92	42.10	15-29	--	20.93	21.17
MW-5	09/11/92	42.10	15-29	--	20.27	21.83
MW-5	12/22/92	42.10	15-29	--	19.99	22.11
MW-5	03/03/93	42.10	15-29	--	16.49	25.61
MW-5	06/23/93	42.10	15-29	--	17.02	25.08
MW-5	09/30/93	42.10	15-29	--	18.25	23.85
MW-5	02/06/94	42.10	15-29	--	18.26	23.84
MW-5	05/02/94	42.10	15-29	--	17.50	24.60
MW-5	07/01/94	42.10	15-29	--	17.79	24.31
MW-5	09/20/94	42.10	15-29	--	20.77	21.33
MW-5	15/5/92	42.10	15-29	--	18.02	24.08
MW-5	03/10/95	42.10	15-29	--	14.93	27.17
MW-5	03/15/95	42.10	15-29	--	14.70	27.40
MW-5	09/23/96	42.10	15-29	--	15.19	26.91
MW-5	12/04/96	42.10	15-29	--	15.78	26.32
MW-5	04/08/97	42.10	15-29	--	13.39	28.71
MW-5	06/30/97	42.10	15-29	--	14.83	27.27
MW-5	11/25/97	42.10	15-29	--	16.14	25.96
MW-5	06/01/98	42.10	15-29	--	10.10	32.00
MW-5	06/14/01	42.10	15-29	--	15.19	26.91
MW-5	11/07/01	42.10	15-29	--	16.47	25.63
MW-5	01/30/02	42.10	15-29	--	14.27	27.83
MW-5	05/29/02	42.10	15-29	--	14.73	27.37
MW-5	08/14/02	42.10	15-29	--	15.73	26.37
MW-5	11/15/02	42.10	15-29	--	16.27	25.83
MW-5	10/25/04	42.10	15-29	--	16.15	25.95
MW-5	12/23/04	42.10	15-29	--	15.88	26.22
MW-5	02/25/05	42.10	15-29	--	12.97	29.13
MW-5	05/19/05	42.10	15-29	--	12.48	29.62
MW-5	09/15/05	42.10	15-29	--	15.47	26.63
MW-5	11/10/08	42.10	15-29	--	15.03	27.07
MW-5	03/20/06	42.10	15-29	--	11.79	30.31
MW-5	05/25/06	42.10	15-29	--	11.15	30.95
MW-5	08/23/06	42.10	15-29	--	12.88	29.22
MW-5	03/14/07	42.10	15-29	--	13.28	28.82
MW-5	06/11/07	42.10	15-29	--	14.56	27.54
MW-5	08/01/07	42.10	15-29	--	15.11	26.99
MW-5	02/27/08	42.10	15-29	--	13.49	28.61
MW-5	05/13/08	42.10	15-29	--	14.64	27.46
MW-5	08/27/08	42.10	15-29	--	15.93	26.17
MW-6	02/05/92	42.33	15-29	--	21.29	21.04

TABLE 1
FLUID LEVEL MONITORING DATA
February 1992 through August 2008
EZ Serve 100877, 525 West A Street, Hayward, CA

Well ID	Date Monitored	Top of Casing Elevation* (feet)	Screen Interval (fbg)	Free Product	Depth to Water (feet)	Groundwater Elevation (feet)
MW-6	09/11/92	42.33	15-29	--	20.56	21.77
MW-6	12/22/92	42.33	15-29	--	20.31	22.02
MW-6	03/03/93	42.33	15-29	--	16.83	25.50
MW-6	06/23/93	42.33	15-29	--	17.30	25.03
MW-6	09/30/93	42.33	15-29	--	19.05	23.28
MW-6	02/06/94	42.33	15-29	--	18.55	23.78
MW-6	05/02/94	42.33	15-29	--	17.74	24.59
MW-6	07/01/94	42.33	15-29	--	18.09	24.24
MW-6	09/20/94	42.33	15-29	--	21.05	21.28
MW-6	12/06/94	42.33	15-29	--	18.33	24.00
MW-6	03/10/95	42.33	15-29	--	15.35	26.98
MW-6	03/15/95	42.33	15-29	--	14.91	27.42
MW-6	09/23/96	42.33	15-29	--	15.50	26.83
MW-6	12/04/96	42.33	15-29	--	16.06	26.27
MW-6	04/08/97	42.33	15-29	--	13.64	28.69
MW-6	06/30/97	42.33	15-29	--	15.08	27.25
MW-6	11/25/97	42.33	15-29	--	16.40	25.93
MW-6	06/01/98	42.33	15-29	--	10.31	32.02
MW-6	06/14/01	42.33	15-29	--	15.46	26.87
MW-6	11/07/01	42.33	15-29	--	16.71	25.62
MW-6	01/30/02	42.33	15-29	--	14.60	27.73
MW-6	05/29/02	42.33	15-29	--	14.99	27.34
MW-6	08/14/02	42.33	15-29	--	16.03	26.30
MW-6	11/15/02	42.33	15-29	--	16.53	25.80
MW-6	10/25/04	42.33	15-29	--	16.43	25.90
MW-6	12/23/04	42.33	15-29	--	16.12	26.21
MW-6	02/25/05	42.33	15-29	--	13.13	29.20
MW-6	05/19/05	42.33	15-29	--	12.61	29.72
MW-6	09/15/05	42.33	15-29	--	14.69	27.64
MW-6	11/10/05	42.33	15-29	--	15.30	27.03
MW-6	03/20/06	42.33	15-29	--	11.88	30.45
MW-6	05/25/06	42.33	15-29	--	11.38	30.95
MW-6	08/23/06	42.33	15-29	--	13.10	29.23
MW-6	03/14/07	42.33	15-29	--	13.52	28.81
MW-6	06/12/07	42.33	15-29	--	14.80	27.53
MW-6	08/01/07	42.33	15-29	--	15.38	26.95
MW-6	02/27/08	42.33	15-29	--	13.79	28.54
MW-6	05/13/08	42.33	15-29	--	14.93	27.40
MW-6	08/27/08	42.33	15-29	--	Well Not Accessable	
MW-7	06/23/93	42.70	10-29	--	17.87	24.83
MW-7	09/30/93	42.70	10-29	--	18.94	23.76
MW-7	02/06/94	42.70	10-29	0.06	19.11	23.63
MW-7	05/02/94	42.70	10-29	--	18.11	24.59
MW-7	07/01/94	42.70	10-29	--	18.72	23.98
MW-7	09/20/94	42.70	10-29	--	21.41	21.29
MW-7	12/05/94	42.70	10-29	--	18.66	24.04

TABLE 1
FLUID LEVEL MONITORING DATA
February 1992 through August 2008
EZ Serve 100877, 525 West A Street, Hayward, CA

Well ID	Date Monitored	Top of Casing Elevation* (feet)	Screen Interval (fbg)	Free Product	Depth to Water (feet)	Groundwater Elevation (feet)
MW-7	03/10/95	42.70	10-29	--	15.72	26.98
MW-7	03/14/95	42.70	10-29	--	15.23	27.47
MW-7	09/23/96	42.70	10-29	--	15.94	26.76
MW-7	12/04/96	42.70	10-29	--	16.43	26.27
MW-7	04/08/97	42.70	10-29	--	14.10	28.60
MW-7	06/30/97	42.70	10-29	--	15.51	27.19
MW-7	11/25/97	42.70	10-29	--	16.80	25.90
MW-7	06/01/98	42.70	10-29	--	10.31	32.39
MW-7	06/14/01	42.70	10-29	--	15.46	27.24
MW-7	11/07/01	42.70	10-29	--	--	--
MW-7	01/30/02	42.70	10-29	--	14.97	27.73
MW-7	05/29/02	42.70	10-29	--	15.49	27.21
MW-7	08/14/02	42.70	10-29	--	16.44	26.26
MW-7	11/15/02	42.70	10-29	--	16.91	25.79
MW-7	10/25/04	42.70	10-29		Could not locate	
MW-7	05/19/05	42.70	10-29	--	13.06	29.64
MW-7	09/15/05	42.70	10-29		Could not locate	
MW-7	11/10/05	42.70	10-29	--	15.78	26.92
MW-7	03/20/06	42.70	10-29		Could not locate	
MW-7	05/25/06	42.70	10-29		Well was blocked by debris	
MW-7	08/23/06	42.70	10-29	--	13.60	29.10
MW-7	03/14/07	42.70	10-29	--	14.00	28.70
MW-7	06/12/07	42.70	10-29		Well not safe to access due to dog	
MW-7	08/01/07	42.70	10-29	--	15.82	26.88
MW-7	02/27/08	42.70	10-29	--	14.24	28.46
MW-7	05/13/08	42.70	10-29	--	14.37	28.33
MW-7	08/27/08	42.70	10-29	--	16.62	26.08
MW-8	06/23/93	97.61	10-29	--	17.64	79.97
MW-8	09/30/93	97.61	10-29	--	18.85	78.76
MW-8	02/06/94	97.61	10-29	--	18.91	78.70
MW-8	05/02/94	97.61	10-29	--	18.11	79.50
MW-8	07/01/94	97.61	10-29	--	18.43	79.18
MW-8	09/20/94	97.61	10-29	--	21.43	76.18
MW-8	12/05/94	97.61	10-29	--	18.72	78.89
MW-8	03/10/95	97.61	10-29	--	18.69	78.92
MW-8	03/15/95	97.61	10-29	--	14.83	82.78
MW-8	09/23/96	97.61	10-29	--	15.83	81.78
	Not sampled, well inaccessible since 4th quarter, 1996					
MW-9	06/23/93	95.41	10-29	--	15.94	79.47
MW-9	09/30/93	95.41	10-29	--	17.05	78.36
MW-9	02/06/94	95.41	10-29	--	17.07	78.34
MW-9	05/02/94	95.41	10-29	--	16.24	79.17
MW-9	07/01/94	95.41	10-29	--	15.59	79.82
MW-9	09/20/94	95.41	10-29	--	16.61	78.80
MW-9	12/05/94	95.41	10-29	--	16.58	78.83

TABLE 1
FLUID LEVEL MONITORING DATA
February 1992 through August 2008
EZ Serve 100877, 525 West A Street, Hayward, CA

Well ID	Date Monitored	Top of Casing Elevation* (feet)	Screen Interval (fbg)	Free Product	Depth to Water (feet)	Groundwater Elevation (feet)
MW-9	03/10/95	95.41	10-29	--	--	--
MW-9	03/15/95	95.41	10-29	--	14.18	81.23
Not sampled, well inaccessible since 1st quarter, 1995						
MW-10	06/23/93	97.11	10-29	--	17.39	79.72
MW-10	09/30/93	97.11	10-29	--	18.58	78.53
MW-10	02/06/94	97.11	10-29	--	18.61	78.50
MW-10	05/02/94	97.11	10-29	--	17.83	79.28
MW-10	07/01/94	97.11	10-29	--	18.17	78.94
MW-10	09/20/94	97.11	10-29	--	21.15	75.96
MW-10	12/05/94	97.11	10-29	--	18.43	78.68
MW-10	03/10/95	97.11	10-29	--	15.37	81.74
MW-10	03/15/95	97.11	10-29	--	15.97	81.14
MW-10	09/23/96	97.11	10-29	--	15.59	81.52
MW-10	12/04/96	97.11	10-29	--	16.15	80.96
Not sampled, well inaccessible since 4th quarter, 1996						
MW-11	02/10/95	92.68	5-29	--	11.80	80.88
MW-11	03/10/95	92.68	5-29	--	11.58	81.10
MW-11	03/15/95	92.68	5-29	--	13.96	78.72
MW-11	09/23/96	92.68	5-29	--	12.29	80.39
MW-11	12/04/96	92.68	5-29	--	--	--
MW-11	04/08/97	92.68	5-29	--	10.51	82.17
Not sampled, well inaccessible since 2nd quarter, 1997						
MW-12	02/10/95	43.25	10-30	--	16.30	26.95
MW-12	03/10/95	43.25	10-30	--	16.37	26.88
MW-12	03/14/95	43.25	10-30	--	15.69	27.56
MW-12	09/23/96	43.25	10-30	--	16.67	26.58
MW-12	12/04/96	43.25	10-30	--	17.16	26.09
MW-12	04/08/97	43.25	10-30	--	14.88	28.37
MW-12	06/30/97	43.25	10-30	--	16.33	26.92
MW-12	11/25/97	43.25	10-30	--	17.61	25.64
MW-12	06/01/98	43.25	10-30	--	11.58	31.67
MW-12	06/14/01	43.25	10-30	--	16.62	26.63
MW-12	11/07/01	43.25	10-30	--	17.91	25.34
MW-12	01/30/02	43.25	10-30	--	15.60	27.65
MW-12	05/29/02	43.25	10-30	--	16.24	27.01
MW-12	08/14/02	43.25	10-30	--	17.20	26.05
MW-12	11/15/02	43.25	10-30	--	17.62	25.63
MW-12	10/25/04	43.25	10-30	Well not sampled, cars parked on well		
MW-12	02/25/05	43.25	10-30	--	14.72	28.53
MW-12	05/19/05	43.25	10-30	--	13.80	29.45
MW-12	09/15/05	43.25	10-30	--	15.94	27.31
MW-12	11/10/05	43.25	10-30	--	16.51	26.74
MW-12	03/20/06	43.25	10-30	--	13.04	30.21
MW-12	05/25/06	43.25	10-30	--	12.65	30.60

TABLE 1
FLUID LEVEL MONITORING DATA
February 1992 through August 2008
EZ Serve 100877, 525 West A Street, Hayward, CA

Well ID	Date Monitored	Top of Casing Elevation* (feet)	Screen Interval (fbg)	Free Product	Depth to Water (feet)	Groundwater Elevation (feet)
MW-12	08/23/06	43.25	10-30	--	14.44	28.81
MW-12	03/14/07	43.25	10-30	--	14.70	28.55
MW-12	06/11/07	43.25	10-30	--	16.02	27.23
MW-12	08/01/07	43.25	10-30	--	16.57	26.68
MW-12	02/27/08	43.25	10-30	--	14.99	28.26
MW-12	05/13/08	43.25	10-30	--	16.12	27.13
MW-12	08/27/08	43.25	10-30	--	17.37	25.88
MW-13	02/10/95	40.97	10-30	--	14.45	26.52
MW-13	03/10/95	40.97	10-30	--	14.30	26.67
MW-13	03/14/95	40.97	10-30	--	15.81	25.16
MW-13	09/23/96	40.97	10-30	--	14.60	26.37
MW-13	12/04/96	40.97	10-30	--	--	--
MW-13	04/08/97	40.97	10-30	--	12.75	28.22
MW-13	06/30/97	40.97	10-30	--	14.13	26.84
MW-13	11/25/97	40.97	10-30	--	15.48	25.49
MW-13	06/01/98	40.97	10-30	--	9.58	31.39
MW-13	06/14/01	40.97	10-30	--	14.51	26.46
MW-13	11/07/01	40.97	10-30	--	15.85	25.12
MW-13	01/30/02	40.97	10-30	--	13.65	27.32
MW-13	05/29/02	40.97	10-30	--	14.10	26.87
MW-13	08/14/02	40.97	10-30	--	15.13	25.84
MW-13	11/15/02	40.97	10-30	--	--	--
MW-13	10/25/04	40.97	Well not sampled. Unable to locate well since 10/25/04			
MW-14	02/10/95	43.19	10-30	--	16.28	26.91
MW-14	03/10/95	43.19	10-30	--	16.33	26.86
MW-14	03/14/95	43.19	10-30	--	14.87	28.32
MW-14	09/23/96	43.19	10-30	--	16.67	26.52
MW-14	12/04/96	43.19	10-30	--	17.06	26.13
MW-14	04/08/97	43.19	10-30	--	14.77	28.42
MW-14	06/30/97	43.19	10-30	--	16.22	26.97
MW-14	11/25/97	43.19	10-30	--	17.52	25.67
MW-14	06/01/98	43.19	10-30	--	11.46	31.73
MW-14	06/14/01	43.19	10-30	--	16.53	26.66
MW-14	11/07/01	43.19	10-30	--	17.84	25.35
MW-14	01/30/02	43.19	10-30	--	15.55	27.64
MW-14	05/29/02	43.19	10-30	--	16.14	27.05
MW-14	08/14/02	43.19	10-30	--	17.12	26.07
MW-14	11/15/02	43.19	10-30	--	17.56	25.63
MW-14	10/25/04	43.19	Well not sampled. Unable to locate well due to parked cars			
MW-14	02/25/05	43.19	10-30	--	14.20	28.99
MW-14	05/19/05	43.19	10-30	--	13.71	29.48
MW-14	09/15/05	43.19	10-30	Well not sampled due to lack of traffic control		
MW-14	11/10/05	43.19	10-30	Well not sampled due to lack of traffic control		
MW-14	03/20/06	43.19	10-30	--	12.94	30.25
MW-14	05/25/06	43.19	10-30	--	12.68	30.51

TABLE 1
FLUID LEVEL MONITORING DATA
February 1992 through August 2008
EZ Serve 100877, 525 West A Street, Hayward, CA

Well ID	Date Monitored	Top of Casing Elevation* (feet)	Screen Interval (fbg)	Free Product	Depth to Water (feet)	Groundwater Elevation (feet)
MW-14	08/23/06	43.19	10-30	--	15.32	27.87
MW-14	03/14/07	43.19	10-30	--	14.58	28.61
MW-14	06/11/07	43.19	10-30	--	15.95	27.24
MW-14	08/01/07	43.19	10-30	--	16.47	26.72
MW-14	02/27/08	43.19	10-30	--	14.91	28.28
MW-14	05/13/08	43.19	10-30	--	16.03	27.16
MW-14	08/27/08	43.19	10-30	--	17.28	25.91
EX-1	08/14/02	--	10-35	--	16.58	--
EX-1	11/15/02	--	10-35	--	17.02	--
EX-1	10/25/04	--	10-35	--	16.91	--
EX-1	12/23/04	--	10-35	--	16.60	--
EX-1	02/25/05	--	10-35	--	13.72	--
EX-1	05/19/05	--	10-35	--	13.13	--
EX-1	09/15/05	--	10-35	--	15.20	--
EX-1	11/10/05	--	10-35	--	15.80	--
EX-1	03/20/06	--	10-35	--	12.35	--
EX-1	05/25/06	--	10-35	--	11.88	--
EX-1	08/23/06	--	10-35	--	13.62	--
EX-1	03/14/07	--	10-35	--	14.00	--
EX-1	06/11/07	--	10-35	--	15.34	--
EX-1	08/01/07	--	10-35	--	15.89	--
EX-1	02/27/08	--	10-35	--	Could not locate well	--
EX-1	05/13/08	--	10-35	--	Could not locate well	--
EX-1	08/27/08	--	10-35	--	16.70	--
VEAS-2	02/25/05	--	5-15/28-30	--	13.68	--
VEAS-2	05/19/05	--	5-15/28-30	--	13.11	--
VEAS-2	11/10/05	--	5-15/28-30	--	DRY	--

Elevations are in feet above mean sea level.

Groundwater elevation calculated as follows:

surface elevation - depth to water

Notes: Free Product = liquid-phase hydrocarbons
 fbg = feet below grade
 -- = not encountered or no data available

Note: No known groundwater sampling was conducted between June 1, 1998 and June 14, 2001 or June 14, 2001 and November 7, 2001. Wellhead elevations resurveyed on January 30, 2002.

TABLE 2
RESULTS OF LABORATORY ANALYSIS OF GROUNDWATER SAMPLES
October 1992 through August 2008
EZ Serve 100877, 525 West A Street, Hayward, CA

Well Number	Date Sampled	TPH-G (ug/l)	Benzene (ug/l)	Toluene (ug/l)	Ethyl-benzene (ug/l)	Total Xylenes (ug/l)	DIPE (ug/l)	ETBE (ug/l)	MTBE (ug/l)	TAME (ug/l)	TBA (ug/l)
MW-1	02/05/92	46,000	7,600	2,300	2,400	6,500	--	--	--	--	--
MW-1	09/11/92	48,000	9,000	1,200	1,800	4,600	--	--	--	--	--
MW-1	12/22/92	84,000	22,000	1,600	4,800	17,000	--	--	--	--	--
MW-1	03/03/93	54,000	16,000	1,600	1,900	4,300	--	--	--	--	--
MW-1	06/23/93	30,000	18,000	1,100	1,400	3,700	--	--	--	--	--
MW-1	09/30/93	33,000	10,000	440	940	1,700	--	--	--	--	--
MW-1	02/06/94	64,000	18,000	1,600	4,700	12,000	--	--	--	--	--
MW-1	05/02/94	7,200	2,100	29	490	520	--	--	--	--	--
MW-1	07/01/94	13,000	3,700	150	550	12,000	--	--	--	--	--
MW-1	09/20/94	10,000	3,100	75	440	870	--	--	--	--	--
MW-1	12/05/92	8,700	3,700	87	520	950	--	--	--	--	--
MW-1	03/10/95	--	--	--	--	--	--	--	--	--	--
MW-1	03/15/95	290	56	2	12	47	--	--	--	--	--
MW-1	09/23/96	20,000	5,200	860	700	1,100	--	--	270	--	--
MW-1	12/04/96	17,000	3,100	64	610	1,200	--	--	280	--	--
MW-1	04/08/97	2,100	430	15	52	85	--	--	100	--	--
MW-1	06/30/97	10,000	2,100	<	<	320	--	--	<	--	--
MW-1	11/25/97	16,000	2,100	23	76	240	--	--	<	--	--
MW-1	06/01/98	19,000	6,100	460	1,100	2,300	--	--	420	--	--
MW-1	06/14/01	6,000	380	8.4	260	180	--	--	<25	--	--
MW-1	11/07/01	12,000	1,000	30	1,000	740	<5.0	<5.0	11	<5.0	<50
MW-1	01/30/02	8,800	690	16	480	270	<5.0	<5.0	14	<5.0	<50
MW-1	05/29/02	6,400	330	13	250	260	2.5	<2.0	12	<2.0	<20
MW-1	08/14/02	5,500	470	14	360	160	<10	<10	10	<10	<100
MW-1	11/15/02	10,000	440	16	310	150	<10	<10	15	<10	<100
MW-1	10/25/04	4,300	260	3.3	150	32	<0.90	<0.90	14	<0.90	5.8
MW-1	12/23/04	11,000	860	6.1	880	280	<0.90	<0.90	16	<0.90	11
MW-1	02/25/05	11,000	710	6.7	720	330	<1.5	<1.5	24	<1.5	11
MW-1	05/19/05	7,500	610	12	370	140	<1.5	<1.5	20	<1.5	11
MW-1	09/15/05	6,100	300	3.5	280	71	<0.90	<0.90	12	<0.90	7.8
MW-1	03/20/06	6,400	290	3.2	330	61	<0.90	<0.90	8.8	<0.90	6
MW-1	05/25/06	4,200	300	6.4	100	40	<0.90	<0.90	11	<0.90	6.7
MW-1	08/23/06	3,400	140	1.9	92	9.2	<0.50	<0.50	4.2	<0.50	<5.0
MW-1	03/14/07	5,600	75	0.83	160	20	<0.50	<0.50	2.5	<0.50	<5.0
MW-1	06/11/07	5,400	90	<1.0	220	12	<1.0	<1.0	2.4	<1.0	<5.0
MW-1	08/01/07	5,300	130	<0.74	450	36	<0.60	<0.63	<0.77	<0.83	<35

TABLE 2
RESULTS OF LABORATORY ANALYSIS OF GROUNDWATER SAMPLES
October 1992 through August 2008
EZ Serve 100877, 525 West A Street, Hayward, CA

Well Number	Date Sampled	TPH-G (ug/l)	Benzene (ug/l)	Toluene (ug/l)	Ethyl-benzene (ug/l)	Total Xylenes (ug/l)	DIPE (ug/l)	ETBE (ug/l)	MTBE (ug/l)	TAME (ug/l)	TBA (ug/l)
MW-1	02/27/08	1,090	11	<0.24	40	9.1	<0.18	<0.23	<0.19	<0.19	<10
MW-1	05/13/08	4,530	77	<0.25	457	56	<2.5	<2.5	6.9	<2.5	<25.0
MW-1	08/27/08	3,350	45	1.1	261	16	<0.5	<0.5	12	<0.5	9.1
MW-1A	06/23/93	--	--	--	--	--	--	--	--	--	--
MW-1A	09/30/93	--	--	--	--	--	--	--	--	--	--
MW-1A	02/06/94	8,900	1,700	42	1,000	400	--	--	--	--	--
MW-1A	05/02/94	--	--	--	--	--	--	--	--	--	--
MW-1A	07/01/94	12,000	1,100	<1	920	1,100	--	--	--	--	--
MW-1A	09/20/94	--	--	--	--	--	--	--	--	--	--
MW-1A	12/05/94	--	--	--	--	--	--	--	--	--	--
MW-1A	03/10/95	--	--	--	--	--	--	--	--	--	--
MW-1A	03/15/95	--	--	--	--	--	--	--	--	--	--
MW-1A	09/23/96	--	--	--	--	--	--	--	--	--	--
MW-1A	12/04/96	52,000	420	140	1,000	3,500	--	--	130	--	--
MW-1A	04/08/97	--	--	--	--	--	--	--	--	--	--
MW-1A	06/30/97	17,000	180	<	140	1,100	--	--	<	--	--
MW-1A	11/25/97	19,000	110	37	290	910	--	--	<	--	--
MW-1A	06/01/98	18,000	200	17	230	820	--	--	91	--	--
MW-1A	06/14/01	27,000	29	<5.0	620	520	--	--	<50	--	--
MW-1A	11/07/01	21,000	51	<5.0	700	510	<5.0	<5.0	<5.0	<5.0	<50
MW-1A	01/30/02	24,000	22	<5.0	390	330	<5.0	<5.0	<5.0	<5.0	<50
MW-1A	05/29/02	12,000	32	<5.0	550	270	<5.0	<5.0	<5.0	<5.0	<50
MW-1A	08/14/02	14,000	22	<2.0	510	240	<2.0	<2.0	<2.0	<2.0	<20
MW-1A	11/15/02	17,000	59	2.4	630	250	<2.0	<2.0	<2.0	<2.0	<20
MW-1A	10/25/04	2,200	1.3	<0.50	58	3.7	<0.50	<0.50	<0.50	<0.50	<5.0
MW-1A	12/23/04	3,100	2.2	<0.50	96	5.4	<0.50	<0.50	<0.50	<0.50	<5.0
MW-1A	02/25/05	7,300	4.7	1.1	140	24	<0.50	<0.50	<0.50	<0.50	<5.0
MW-1A	05/19/05	13,000	3.1	1.7	190	50	<1.5	<1.5	<1.5	<1.5	<7.0
MW-1A	09/15/05	4,000	0.84	<0.50	52	2.5	<0.50	<0.50	<0.50	<0.50	<5.0
MW-1A	11/10/05	12,000	<2.0	0.76	130	3.6	<0.50	<0.50	<0.50	<0.50	<5.0
MW-1A	03/20/06	3,300	1.1	<0.50	17	1	<0.50	<0.50	<0.50	<0.50	<5.0
MW-1A	05/25/06	1,600	0.79	<0.50	22	0.94	<0.50	<0.50	<0.50	<0.50	<5.0
MW-1A	08/23/06	4,700	1.6	1.1	84	1.8	<0.50	<0.50	<0.50	<0.50	<5.0
MW-1A	03/14/07	610	<0.50	<0.50	12	<0.50	<0.50	<0.50	7.5	<0.50	<5.0
MW-1A	06/12/07	3,200	1.1	0.84	79	0.76	<0.50	<0.50	20	<0.50	<5.0

TABLE 2
RESULTS OF LABORATORY ANALYSIS OF GROUNDWATER SAMPLES
October 1992 through August 2008
EZ Serve 100877, 525 West A Street, Hayward, CA

Well Number	Date Sampled	TPH-G (ug/l)	Benzene (ug/l)	Toluene (ug/l)	Ethyl-benzene (ug/l)	Total Xylenes (ug/l)	DIPE (ug/l)	ETBE (ug/l)	MTBE (ug/l)	TAME (ug/l)	TBA (ug/l)
MW-1A	08/01/07	440	0.31	<0.15	6.2	<0.34	<0.12	<0.13	79	<0.17	<6.9
MW-1A	02/27/08	1,660	<0.18	<0.24	50	<0.45	<0.20	<0.23	21	<0.19	<10
MW-2	02/05/92	67,000	13,000	4,700	820	1,300	--	--	--	--	--
MW-2	09/11/92	57,000	9,000	1,400	1,200	8,400	--	--	--	--	--
MW-2	12/22/92	31,000	9,900	350	2,000	4,100	--	--	--	--	--
MW-2	03/03/93	17,000	5,100	1,300	720	1,900	--	--	--	--	--
MW-2	06/23/93	60,000	23,000	1,500	4,500	17,000	--	--	--	--	--
MW-2	09/30/93	38,000	12,000	780	1,500	6,500	--	--	--	--	--
MW-2	02/06/94	34,000	8,900	450	2,000	5,500	--	--	--	--	--
MW-2	05/02/94	18,000	3,800	260	1,100	3,500	--	--	--	--	--
MW-2	07/01/94	18,000	3,700	510	870	2,600	--	--	--	--	--
MW-2	09/20/94	19,000	4,500	300	1,200	4,000	--	--	--	--	--
MW-2	12/06/94	22,000	4,700	340	1,400	4,500	--	--	--	--	--
MW-2	03/10/95	--	--	--	--	--	--	--	--	--	--
MW-2	03/15/95	29,000	5,600	350	1,900	6,300	--	--	--	--	--
MW-2	09/23/96	29,000	3,700	150	1,000	4,300	--	--	860	--	--
MW-2	12/04/96	31,000	3,800	140	2,000	5,100	--	--	690	--	--
MW-2	04/08/97	20,000	2,500	80	1,300	3,400	--	--	880	--	--
MW-2	06/30/97	41,000	2,700	130	1,200	4,000	--	--	890	--	--
MW-2	11/25/97	51,000	2,900	140	1,800	7,000	--	--	1,200	--	--
MW-2	06/01/98	33,000	2,700	130	1,800	5,700	--	--	610	--	--
MW-2	06/14/01	18,000	860	14	1,100	2,200	--	--	<100	--	--
MW-2	11/07/01	20,000	880	20	1,100	2,600	<5.0	<5.0	21	<5.0	<50
MW-2	01/30/02	19,000	880	19	1,100	2,400	<5.0	<5.0	56	<5.0	<50
MW-2	05/29/02	8,100	390	16	560	1,400	<5.0	<5.0	32	<5.0	<50
MW-2	08/14/02	19,000	820	21	1,200	2,600	<20	<20	29	<20	<200
MW-2	11/15/02	34,000	910	31	1,000	1,400	<20	<20	39	<20	<200
MW-2	10/25/04	9,300	280	3.8	500	980	<2.0	<2.0	8.2	<2.0	<9.0
MW-2	12/23/04	10,000	310	3.9	470	840	<2.0	<2.0	9.5	<2.0	<9.0
MW-2	02/25/05	15,000	320	4.8	860	1,600	<2.0	<2.0	7.7	<2.0	<9.0
MW-2	05/19/05	15,000	300	3.6	770	1,200	<2.5	<2.5	9.2	<2.5	<15
MW-2	09/15/05	--	--	--	--	--	--	--	--	--	--
MW-2	11/10/05	14,000	230	2.6	530	1,000	<2.5	<2.5	6.2	<2.5	<15
MW-2	03/20/06	8,700	170	<1.5	360	530	<1.5	<1.5	3.8	<1.5	<7.0
MW-2	05/25/06	--	--	--	--	--	--	--	--	--	--

TABLE 2
RESULTS OF LABORATORY ANALYSIS OF GROUNDWATER SAMPLES
October 1992 through August 2008
EZ Serve 100877, 525 West A Street, Hayward, CA

Well Number	Date Sampled	TPH-G (ug/l)	Benzene (ug/l)	Toluene (ug/l)	Ethyl-benzene (ug/l)	Total Xylenes (ug/l)	DIPE (ug/l)	ETBE (ug/l)	MTBE (ug/l)	TAME (ug/l)	TBA (ug/l)
MW-3	02/05/92	16,000	2,700	410	<1	3,400	--	--	--	--	--
MW-3	09/11/92	43,000	7,600	1,600	1,400	4,100	--	--	--	--	--
MW-3	12/22/92	29,000	8,800	1,200	1,500	3,700	--	--	--	--	--
MW-3	03/03/93	17,000	5,000	1,500	680	1,700	--	--	--	--	--
MW-3	06/23/93	5,700	3,000	120	560	790	--	--	--	--	--
MW-3	09/30/93	21,000	7,000	2,100	970	2,600	--	--	--	--	--
MW-3	02/06/94	24,000	7,200	1,600	990	3,200	--	--	--	--	--
MW-3	05/02/94	10,000	2,200	440	470	1,200	--	--	--	--	--
MW-3	07/01/94	8,200	2,000	370	350	930	--	--	--	--	--
MW-3	09/20/94	7,200	2,000	360	380	1,000	--	--	--	--	--
MW-3	12/06/94	9,000	2,300	400	440	1,100	--	--	--	--	--
MW-3	03/10/95	--	--	--	--	--	--	--	--	--	--
MW-3	03/15/95	4,300	980	47	370	780	--	--	--	--	--
MW-3	09/23/96	10,000	950	20	700	780	--	--	80	--	--
MW-3	12/04/96	13,000	1,100	25	1,000	1,100	--	--	67	--	--
MW-3	04/08/97	3,800	210	4.6	270	280	--	--	56	--	--
MW-3	06/30/97	3,500	280	<	32	180	--	--	<	--	--
MW-3	11/25/97	6,800	230	<	370	290	--	--	130	--	--
MW-3	06/01/98	--	--	--	--	--	--	--	--	--	--
MW-3	06/14/01	2,100	9	<0.5	78	43	--	--	<5.0	--	--
MW-3	11/07/01	7,700	75	<5.0	410	150	<5.0	<5.0	<5.0	<5.0	<5.0
MW-3	01/30/02	3,600	27	<5.0	120	34	<5.0	<5.0	<5.0	<5.0	<5.0
MW-3	05/29/02	2,000	18	<5.0	53	13	<5.0	<5.0	<5.0	<5.0	<5.0
MW-3	08/14/02	2,400	19	<0.5	50	6.5	<0.5	<0.5	<0.5	<0.5	<5.0
MW-3	11/15/02	4,300	7.5	<0.5	22	1.1	0.5	0.5	0.5	0.5	<5.0
MW-3	10/25/04	460	0.6	<0.50	9.6	1.7	<0.50	<0.50	<0.50	<0.50	<5.0
MW-3	12/20/04	5,400	9	<0.50	280	74	<0.50	<0.50	<0.50	<0.50	<5.0
MW-3	02/25/05	Could not locate, VEAS-2 sampled instead				--	--	--	--	--	--
MW-3	05/19/05	Could not locate, VEAS-2 sampled instead				--	--	--	--	--	--
MW-3	09/15/05	Could not locate				--	--	--	--	--	--
MW-3	11/10/05	Could not locate				--	--	--	--	--	--
MW-3	03/20/06	800	0.76	<0.50	19	3.7	<0.50	<0.50	<0.50	<0.50	<5.0
MW-3	05/25/06	500	0.59	<0.50	3.8	0.96	<0.50	<0.50	<0.50	<0.50	<5.0
MW-3	08/23/06	550	<0.50	<0.50	2.2	<0.50	<0.50	<0.50	<0.50	<0.50	<5.0
MW-3	03/14/07	660	0.85	<0.50	22	3.7	<0.50	<0.50	1.3	<0.50	<5.0

TABLE 2
RESULTS OF LABORATORY ANALYSIS OF GROUNDWATER SAMPLES
October 1992 through August 2008
EZ Serve 100877, 525 West A Street, Hayward, CA

Well Number	Date Sampled	TPH-G (ug/l)	Benzene (ug/l)	Toluene (ug/l)	Ethyl-benzene (ug/l)	Total Xylenes (ug/l)	DIPE (ug/l)	ETBE (ug/l)	MTBE (ug/l)	TAME (ug/l)	TBA (ug/l)
MW-3	06/12/07	540	<0.50	<0.50	14	2.2	<0.50	<0.50	6.0	<0.50	<5.0
MW-3	08/01/07	2,300	2.3	<0.15	87	13	<0.12	<0.13	<0.15	<0.17	<6.9
MW-3	02/27/08	1,360	<0.18	<0.24	32	3	<0.20	<0.23	7.7	<0.19	<10
MW-3	05/13/08	1,160	1.2	0.6	28	2.2	<0.5	<0.5	31	<0.5	<5.0
MW-3	08/27/08	2,790	1.4	<0.5	56	4.0	<0.5	<0.5	40	<0.5	18
MW-4	02/05/92	16,000	2,700	410	<1	3,400	--	--	--	--	--
MW-4	09/11/92	43,000	7,600	1,600	1,400	4,100	--	--	--	--	--
MW-4	12/22/92	29,000	8,800	1,200	1,500	3,700	--	--	--	--	--
MW-4	03/03/93	17,000	5,000	1,500	680	1,700	--	--	--	--	--
MW-4	06/23/93	5,700	3,000	120	560	790	--	--	--	--	--
MW-4	09/30/93	21,000	7,000	2,100	970	2,600	--	--	--	--	--
MW-4	02/06/94	24,000	7,200	1,600	990	3,200	--	--	--	--	--
MW-4	05/02/94	10,000	2,200	440	470	1,200	--	--	--	--	--
MW-4	07/01/94	8,200	2,000	370	350	930	--	--	--	--	--
MW-4	09/20/94	7,200	2,000	360	380	1,000	--	--	--	--	--
MW-4	12/06/94	9,000	2,300	400	440	1,100	--	--	--	--	--
MW-4	03/10/95	--	--	--	--	--	--	--	--	--	--
MW-4	03/15/95	15,000	4,400	600	770	2,660	--	--	--	--	--
MW-4	09/23/96	32,000	7,400	540	1,500	2,800	--	--	2,100	--	--
MW-4	12/04/96	23,000	7,800	140	1,200	1,200	--	--	1,900	--	--
MW-4	04/08/97	16,000	3,900	680	850	2,300	--	--	980	--	--
MW-4	06/30/97	63,000	7,000	430	1,400	4,400	--	--	1,700	--	--
MW-4	11/25/97	30,000	4,300	61	810	1,500	--	--	880	--	--
MW-4	06/01/98	33,000	5,700	710	1,700	2,900	--	--	720	--	--
MW-4	06/14/01	9,500	690	45	560	600	<5.0	<5.0	<50	<5.0	<50
MW-4	11/07/01	6,000	710	20	630	190	<5.0	<5.0	27	<5.0	<50
MW-4	01/30/02	4,800	830	16	600	61	<20	<20	42	<20	<200
MW-4	05/29/02	5,300	720	57	600	200	<2.0	<2.0	35	<2.0	<20
MW-4	08/14/02	5,000	640	15	550	35	<2.0	<2.0	28	<2.0	<20
MW-4	11/15/02	3,700	330	10	260	200	<0.50	<0.50	20	<0.50	<5.0
MW-4	10/25/04	4,000	180	15	200	190	<0.90	<0.90	4.1	<0.90	<5.0
MW-4	12/23/04	7,400	280	24	340	340	<0.90	<0.90	7.9	<0.90	<5.0
MW-4	02/25/05	4,200	160	15	280	420	<4.0	<4.0	6.2	<4.0	<20
MW-4	05/19/05	15,000	480	76	1,100	1,600	<0.90	<0.90	14	<0.90	5.4
MW-4	09/15/05	5,400	220	22	250	430	<0.50	<0.50	10	<0.50	<5.0

TABLE 2
RESULTS OF LABORATORY ANALYSIS OF GROUNDWATER SAMPLES
October 1992 through August 2008
EZ Serve 100877, 525 West A Street, Hayward, CA

Well Number	Date Sampled	TPH-G (ug/l)	Benzene (ug/l)	Toluene (ug/l)	Ethyl-benzene (ug/l)	Total Xylenes (ug/l)	DIPE (ug/l)	ETBE (ug/l)	MTBE (ug/l)	TAME (ug/l)	TBA (ug/l)
MW-4	11/10/06	8,000	320	37	530	670	<0.50	<0.50	9.3	<0.50	<5.0
MW-4	03/20/06	3,900	91	26	5.8	360.0	<0.50	<0.50	5.7	<0.50	<5.0
MW-4	05/25/06	8,300	300	77	570	730	<0.50	<0.50	5.4	<0.50	<5.0
MW-4	08/23/06	9,400	240	79	490	860	<0.50	<0.50	6.1	<0.50	<5.0
MW-4	03/14/07	4,600	100	20	350	570	<0.50	<0.50	2.3	<0.50	<5.0
MW-4	06/12/07	3,700	120	14	150	230	<0.50	<0.50	2.5	<0.50	<5.0
MW-4	08/01/07	3,700	120	15	280	310	<0.60	<0.63	<0.77	<0.83	<35
MW-4	02/27/08	Could not locate well	--	--	--	--	--	--	--	--	--
MW-4	05/13/08	2,800	102	18	329	343	<2.5	<2.5	8.0	<2.5	<25.0
MW-4	08/27/08	4,730	72	12	318	233	<0.5	<0.5	33	<0.5	18
MW-5	02/05/92	78,000	7,900	5,000	2,900	1,800	--	--	--	--	--
MW-5	09/11/92	49,000	4,700	400	1,400	4,100	--	--	--	--	--
MW-5	12/22/92	34,000	8,600	340	2,200	4,800	--	--	--	--	--
MW-5	03/03/93	22,000	7,500	640	1,300	3,400	--	--	--	--	--
MW-5	06/23/93	15,000	5,800	120	1,100	2,100	--	--	--	--	--
MW-5	09/30/93	25,000	7,600	410	1,000	4,400	--	--	--	--	--
MW-5	02/06/94	23,000	6,000	180	2,000	5,900	--	--	--	--	--
MW-5	05/02/94	8,000	1,300	29	440	770	--	--	--	--	--
MW-5	07/01/94	10,000	1,700	97	600	1,400	--	--	--	--	--
MW-5	09/20/94	8,400	1,600	54	650	1,400	--	--	--	--	--
MW-5	15/5/92	10,000	1,800	<50	620	1,400	--	--	--	--	--
MW-5	03/10/95	--	--	--	--	--	--	--	--	--	--
MW-5	03/15/95	5,300	1,100	11	180	320	--	--	--	--	--
MW-5	09/23/96	9,800	1,800	11	470	510	--	--	100	--	--
MW-5	12/04/96	10,000	2,200	9	550	430	--	--	70	--	--
MW-5	04/08/97	11,000	1,300	15	450	720	--	--	180	--	--
MW-5	06/30/97	3,800	500	<	75	84	--	--	<	--	--
MW-5	11/25/97	8,200	1,300	14	310	220	--	--	<	--	--
MW-5	06/01/98	3,600	290	12	52	52	--	--	81	--	--
MW-5	06/14/01	5,100	44	0.71	110	23	--	--	<5.0	--	--
MW-5	11/07/01	7,600	220	<5.0	550	30	<5.0	<5.0	<5.0	<5.0	<50
MW-5	01/30/02	6,200	180	<20	310	130	<20	<20	<20	<20	<200
MW-5	05/29/02	3,900	66	0.8	110	7.4	2	<0.5	0.9	<0.5	<5.0
MW-5	08/14/02	4,300	80	0.9	150	12	<0.5	<0.5	1.1	<0.5	<5.0
MW-5	11/15/02	7,000	99	<5.0	250	500	<5.0	<5.0	<5.0	<5.0	<5.0

TABLE 2
RESULTS OF LABORATORY ANALYSIS OF GROUNDWATER SAMPLES
October 1992 through August 2008
EZ Serve 100877, 525 West A Street, Hayward, CA

Well Number	Date Sampled	TPH-G (ug/l)	Benzene (ug/l)	Toluene (ug/l)	Ethyl-benzene (ug/l)	Total Xylenes (ug/l)	DIPE (ug/l)	ETBE (ug/l)	MTBE (ug/l)	TAME (ug/l)	TBA (ug/l)
MW-5	10/25/04	4,800	27	0.5	50	3.7	<0.50	<0.50	0.79	<0.50	<5.0
MW-5	12/23/04	6,300	55	<0.90	140	5.6	<0.90	<0.90	<0.90	<0.90	<5.0
MW-5	02/25/05	4,700	44	0.59	110	4.8	<0.50	<0.50	0.85	<0.50	<5.0
MW-5	05/19/05	3,800	32	0.61	66	4.4	<0.50	<0.50	1	<0.50	<5.0
MW-5	09/15/05	4,500	22	0.65	78	4	<0.50	<0.50	9.5	<0.50	<5.0
MW-5	11/10/08	4,000	19	0.52	77	4.3	<0.50	<0.50	0.8	<0.50	<5.0
MW-5	03/20/06	4,000	9.5	<0.50	4.9	4	<0.50	<0.50	1.5	<0.50	<5.0
MW-5	05/25/06	3,400	12	<0.50	46	3.8	<0.50	<0.50	1.6	<0.50	<5.0
MW-5	08/23/06	4,000	5.6	0.75	42	3.6	<0.50	<0.50	1.3	<0.50	<5.0
MW-5	03/14/07	3,500	3.1	1	31	1.6	<0.50	<0.50	1.8	<0.50	<5.0
MW-5	06/11/07	2,500	3.0	0.83	14	1.4	<0.50	<0.50	1.9	<0.50	<5.0
MW-5	08/01/07	2,700	3.6	1.1	21	1.1	<0.12	<0.12	<0.15	<0.12	<6.9
MW-5	02/27/08	628	1.5	<0.24	8.9	4.2	<0.20	<0.23	1.6	<0.19	<10
MW-5	05/13/08	752	1.3	1.1	1.9	1.8	<0.5	<0.5	7.9	<0.5	<5.0
MW-5	08/27/08	3,100	2.9	2.9	12	6.8	<0.5	<0.5	64	<0.5	30
MW-6	02/05/92	51,000	5,400	3,500	3,600	10,000	--	--	--	--	--
MW-6	09/11/92	24,000	2,500	830	1,400	2,300	--	--	--	--	--
MW-6	12/22/92	23,000	5,100	630	2,000	3,100	--	--	--	--	--
MW-6	03/03/93	18,000	4,400	820	1,400	2,400	--	--	--	--	--
MW-6	06/23/93	18,000	4,600	850	2,700	3,400	--	--	--	--	--
MW-6	09/30/93	--	--	--	--	--	--	--	--	--	--
MW-6	02/06/94	20,000	4,600	690	2,100	2,500	--	--	--	--	--
MW-6	05/02/94	5,300	930	54	610	240	--	--	--	--	--
MW-6	07/01/94	10,000	1,500	160	850	690	--	--	--	--	--
MW-6	09/20/94	11,000	2,000	140	1,200	760	--	--	--	--	--
MW-6	12/06/94	8,600	1,300	87	980	610	--	--	--	--	--
MW-6	03/10/95	--	--	--	--	--	--	--	--	--	--
MW-6	03/15/95	9,800	1,600	110	1,000	1,000	--	--	--	--	--
MW-6	09/23/96	12,000	520	55	930	350	--	--	51	--	--
MW-6	12/04/96	11,000	390	25	680	170	--	--	130	--	--
MW-6	04/08/97	17,000	700	92	1,400	900	--	--	2,700	--	--
MW-6	06/30/97	11,000	270	37	590	450	--	--	<	--	--
MW-6	11/25/97	9,100	130	26	500	150	--	--	310	--	--
MW-6	06/01/98	14,000	190	50	680	400	--	--	160	--	--
MW-6	06/14/01	6,400	29	6.3	200	55	--	--	<20	--	--

TABLE 2
RESULTS OF LABORATORY ANALYSIS OF GROUNDWATER SAMPLES
October 1992 through August 2008
EZ Serve 100877, 525 West A Street, Hayward, CA

Well Number	Date Sampled	TPH-G (ug/l)	Benzene (ug/l)	Toluene (ug/l)	Ethyl-benzene (ug/l)	Total Xylenes (ug/l)	DIPE (ug/l)	ETBE (ug/l)	MTBE (ug/l)	TAME (ug/l)	TBA (ug/l)
MW-6	11/07/01	7,200	34	8.7	180	31	<5.0	<5.0	<5.0	<5.0	<50
MW-6	01/30/02	6,600	32	7.2	130	28	<5.0	<5.0	<5.0	<5.0	<50
MW-6	05/29/02	5,200	26	7	150	27	<0.5	<0.5	<5.0	<0.5	<50
MW-6	08/14/02	5,300	24	6.6	120	22	<2.0	<2.0	<2.0	<2.0	<20
MW-6	11/15/02	5,000	19	4.7	70	38	<0.5	<0.5	<0.5	<0.5	<5.0
MW-6	10/25/04	3,600	9.8	2.1	83	16	<0.50	<0.50	2.3	<0.50	<5.0
MW-6	12/23/04	2,100	8.2	1.3	10	2.4	<0.90	<0.90	1.5	<0.90	<5.0
MW-6	02/25/05	2,500	6.6	1.4	29	5.2	<0.50	<0.50	0.74	<0.50	<5.0
MW-6	05/19/05	3,800	7.5	2.2	54	12	<0.50	<0.50	3.1	<0.50	<5.0
MW-6	09/15/05	1,900	2.9	0.88	12	2.7	<0.50	<0.50	0.94	<0.50	<5.0
MW-6	11/10/05	1,700	2.1	0.6	5.4	1.7	<0.50	<0.50	0.81	<0.50	<5.0
MW-6	03/20/06	2,300	3.6	1.0	12	3.9	<0.50	<0.50	1.1	<0.50	<5.0
MW-6	05/25/06	2,400	5	1.8	31	14	<0.50	<0.50	3	<0.50	<5.0
MW-6	08/23/06	2,300	2.3	0.84	7.8	4.2	<0.50	<0.50	1.7	<0.50	<5.0
MW-6	03/14/07	3,300	2.8	0.7	49	6.5	<0.50	<0.50	10	<0.50	<5.0
MW-6	06/12/07	2,000	1.4	0.54	3.2	2.1	<0.50	<0.50	32	<0.50	<5.0
MW-6	08/01/07	1,500	0.99	0.4	2.1	1.2	<0.12	<0.13	50	<0.17	<6.9
MW-6	02/27/08	1,520	<0.18	<0.24	2.4	1.3	<0.20	<0.23	140	<0.19	<10
MW-6	05/13/08	1,530	1.0	0.8	4.0	1.5	<0.5	<0.5	127	<0.5	<5.0
MW-6	08/27/08	Not Accessable		--	--	--	--	--	--	--	--
MW-7	06/23/93	29,000	4,200	71	4,400	5,600	--	--	--	--	--
MW-7	09/30/93	30,000	3,200	71	2,800	3,400	--	--	--	--	--
MW-7	02/06/94	--	--	--	--	--	--	--	--	--	--
MW-7	05/02/94	5,700	630	13	660	400	--	--	--	--	--
MW-7	07/01/94	3,100	180	99	160	520	--	--	--	--	--
MW-7	09/20/94	6,100	540	6	750	730	--	--	--	--	--
MW-7	12/05/94	3,700	280	<10	430	350	--	--	--	--	--
MW-7	03/10/95	3,900	310	<10	540	540	--	--	--	--	--
MW-7	03/14/95	1,900	290	4	26	296	--	--	--	--	--
MW-7	09/23/96	6,300	76	<	420	270	--	--	15	--	--
MW-7	12/04/96	7,800	67	<	600	350	--	--	22	--	--
MW-7	04/08/97	5,600	42	<	240	96	--	--	<	--	--
MW-7	06/30/97	5,500	<	79	<	44	--	--	280	--	--
MW-7	11/25/97	2,400	23	5.4	<	54	--	--	120	--	--
MW-7	06/01/98	14,000	190	50	680	400	--	--	160	--	--

TABLE 2
RESULTS OF LABORATORY ANALYSIS OF GROUNDWATER SAMPLES
October 1992 through August 2008
EZ Serve 100877, 525 West A Street, Hayward, CA

Well Number	Date Sampled	TPH-G (ug/l)	Benzene (ug/l)	Toluene (ug/l)	Ethyl-benzene (ug/l)	Total Xylenes (ug/l)	DIPE (ug/l)	ETBE (ug/l)	MTBE (ug/l)	TAME (ug/l)	TBA (ug/l)
MW-7	06/14/01	6,400	29	6	200	55	--	--	<20	--	--
MW-7	11/07/01	--	--	--	--	--	--	--	--	--	--
MW-7	01/30/02	6,200	1.5	<0.50	96	4.6	<0.5	<0.5	<0.5	<0.5	<5.0
MW-7	05/29/02	1,600	1	<0.50	3.4	1.9	<0.5	<0.5	<0.5	<0.5	<5.0
MW-7	08/14/02	4,100	1.3	<0.50	74	1.3	<0.5	<0.5	<0.5	<0.5	<5.0
MW-7	11/15/02	1,000	0.6	<0.50	<0.5	0.6	<0.5	<0.5	<0.5	<0.5	<5.0
MW-7	10/25/04	Could not locate well	--	--	--	--	--	--	--	--	--
MW-7	05/19/05	660	<0.50	<0.50	1.8	<0.50	<0.50	<0.50	<0.50	<0.50	<5.0
MW-7	09/15/05	Could not locate well	--	--	--	--	--	--	--	--	--
MW-7	11/10/05	340	<0.50	<0.50	<0.50	<0.50	<0.50	<0.50	<0.50	<0.50	<5.0
MW-7	03/20/06	Could not locate well	--	--	--	--	--	--	--	--	--
MW-7	05/25/06	Well was blocked by debris	--	--	--	--	--	--	--	--	--
MW-7	08/23/06	380	<0.50	<0.50	<0.50	<0.50	<0.50	<0.50	<0.50	<0.50	<5.0
MW-7	03/14/07	170	<0.50	<0.50	<0.50	<0.50	<0.50	<0.50	<0.50	<0.50	<5.0
MW-7	06/12/07	Well not safe to access due to dog	--	--	--	--	--	--	--	--	--
MW-7	08/01/07	470	<0.12	<0.15	1.7	0.5	<0.12	<0.13	<0.15	<0.17	<6.9
MW-7	02/27/08	257	<0.18	<0.24	<0.21	<0.45	<0.20	<0.23	<0.19	<0.19	<10
MW-7	05/13/08	241	<0.5	<0.5	<0.5	<0.5	<0.5	<0.5	<0.5	<0.5	<5.0
MW-7	08/27/08	514	<0.5	<0.5	0.9	<0.5	<0.5	<0.5	<0.5	<0.5	<5.0
MW-8	06/23/93	350	43	9	35	67	--	--	--	--	--
MW-8	09/30/93	2,700	190	340	170	720	--	--	--	--	--
MW-8	02/06/94	<100	<1	1	1	2	--	--	--	--	--
MW-8	05/02/94	<100	<1	3	<1	7	--	--	--	--	--
MW-8	07/01/94	300	18	48	19	37	--	--	--	--	--
MW-8	09/20/94	<100	<1	<1	<1	<1	--	--	--	--	--
MW-8	12/05/94	<50	<0.5	<0.5	<0.5	<0.5	--	--	--	--	--
MW-8	03/10/95	--	--	--	--	--	--	--	--	--	--
MW-8	03/15/95	<50	<0.5	<0.5	<0.5	1	--	--	--	--	--
MW-8	09/23/96	<	<	<	<	<	<	<	<	<	<
Not sampled, well inaccessible since 4th quarter, 199											
MW-9	06/23/93	45,000	14,000	1,200	2,800	12,000	--	--	--	--	--
MW-9	09/30/93	86,000	22,000	1,100	3,300	15,000	--	--	--	--	--
MW-9	02/06/94	43,000	10,000	460	2,100	7,500	--	--	--	--	--
MW-9	05/02/94	17,000	5,400	270	1,300	4,700	--	--	--	--	--

TABLE 2
RESULTS OF LABORATORY ANALYSIS OF GROUNDWATER SAMPLES
October 1992 through August 2008
EZ Serve 100877, 525 West A Street, Hayward, CA

Well Number	Date Sampled	TPH-G (ug/l)	Benzene (ug/l)	Toluene (ug/l)	Ethyl-benzene (ug/l)	Total Xylenes (ug/l)	DIPE (ug/l)	ETBE (ug/l)	MTBE (ug/l)	TAME (ug/l)	TBA (ug/l)
MW-9	07/01/94	10,000	2,100	120	450	1,300	--	--	--	--	--
MW-9	09/20/94	7,500	2,200	97	400	1,200	--	--	--	--	--
MW-9	12/05/94	10,000	2,700	130	530	1,600	--	--	--	--	--
MW-9	03/10/95	--	--	--	--	--	--	--	--	--	--
MW-9	03/15/95	18,000	5,900	270	1,200	3,680	--	--	--	--	--
Not sampled, well inaccessible since 1st quarter, 199											
MW-10	06/23/93	35,000	980	640	3,500	12,000	--	--	--	--	--
MW-10	09/30/93	4,000	230	12	100	680	--	--	--	--	--
MW-10	02/06/94	2,000	69	12	220	120	--	--	--	--	--
MW-10	05/02/94	710	16	6	85	62	--	--	--	--	--
MW-10	07/01/94	2,000	52	43	120	210	--	--	--	--	--
MW-10	09/20/94	2,800	34	16	270	560	--	--	--	--	--
MW-10	12/05/94	2,700	30	13	260	430	--	--	--	--	--
MW-10	03/10/95	--	--	--	--	--	--	--	--	--	--
MW-10	03/15/95	1,400	18	6	200	239	--	--	--	--	--
MW-10	09/23/96	3,800	4	2.9	220	170	--	--	397	--	--
MW-10	12/04/96	4,600	1.6	7.7	260	150	--	--	20	--	--
Not sampled, well inaccessible since 4th quarter, 199											
MW-11	02/10/95	7,000	140	22	600	1,000	--	--	--	--	--
MW-11	03/10/95	--	--	--	--	--	--	--	--	--	--
MW-11	03/15/95	6,000	200	17	750	1,276	--	--	--	--	--
MW-11	09/23/96	27,000	55	81	300	3,500	--	--	40	--	--
MW-11	12/04/96	--	--	--	--	--	--	--	--	--	--
MW-11	04/08/97	24,000	280	130	3,000	3,700	--	--	<	--	--
Not sampled, well inaccessible since 2nd quarter, 199											
MW-12	02/10/95	<50	<0.5	<0.5	<0.5	<0.5	--	--	--	--	--
MW-12	03/10/95	--	--	--	--	--	--	--	--	--	--
MW-12	03/14/95	<50	<0.5	<0.5	<0.5	0.9	--	--	--	--	--
MW-12	09/23/96	<	<	1.6	<	<	--	--	--	--	--
MW-12	12/04/96	<	3.2	<	1.9	3.4	--	--	--	--	--
MW-12	04/08/97	<	<	<	<	<	--	--	--	--	--
MW-12	06/30/97	--	--	--	--	--	--	--	--	--	--
MW-12	11/25/97	--	--	--	--	--	--	--	--	--	--

TABLE 2
RESULTS OF LABORATORY ANALYSIS OF GROUNDWATER SAMPLES
October 1992 through August 2008
EZ Serve 100877, 525 West A Street, Hayward, CA

Well Number	Date Sampled	TPH-G (ug/l)	Benzene (ug/l)	Toluene (ug/l)	Ethyl-benzene (ug/l)	Total Xylenes (ug/l)	DIPE (ug/l)	ETBE (ug/l)	MTBE (ug/l)	TAME (ug/l)	TBA (ug/l)
MW-12	06/01/98	--	--	--	--	--	--	--	--	--	--
MW-12	06/14/01	<50	<0.50	<0.50	<0.50	<0.50	--	--	<5.0	--	--
MW-12	11/07/01	<50	<0.5	<0.5	<0.5	<0.5	<0.5	<0.5	<0.5	<0.5	<5.0
MW-12	01/30/02	<50	<0.5	<0.5	<0.5	<0.5	<0.5	<0.5	<0.5	<0.5	<5.0
MW-12	05/29/02	<50	<0.5	<0.5	<0.5	<0.5	<0.5	<0.5	<0.5	<0.5	<5.0
MW-12	08/14/02	<50	<0.5	<0.5	<0.5	<0.5	<0.5	<0.5	<0.5	<0.5	<5.0
MW-12	11/15/02	<50	<0.5	<0.5	<0.5	<0.5	<0.5	<0.5	<0.5	<0.5	<5.0
MW-12	10/25/04	Well not sampled, cars parked on we			--	--	--	--	--	--	--
MW-12	02/25/05	<50	<0.5	<0.5	<0.5	<0.5	<0.5	<0.5	<0.5	<0.5	<5.0
MW-12	05/19/05	<50	<0.5	<0.5	<0.5	<0.5	<0.5	<0.5	<0.5	<0.5	<5.0
MW-12	09/15/05	<50	<0.5	<0.5	<0.5	<0.5	<0.5	<0.5	<0.5	<0.5	<5.0
MW-12	11/10/05	<50	<0.50	<0.50	<0.50	<0.50	<0.50	<0.50	<0.50	<0.50	<5.0
MW-12	03/20/06	<50	<0.50	<0.50	<0.50	<0.50	<0.50	<0.50	<0.50	<0.50	<5.0
MW-12	05/25/06	<50	<0.50	<0.50	<0.50	<0.50	<0.50	<0.50	<0.50	<0.50	<5.0
MW-12	08/23/06	<50	<0.50	<0.50	<0.50	<0.50	<0.50	<0.50	<0.50	<0.50	<5.0
MW-12	03/14/07	<50	<0.50	<0.50	<0.50	<0.50	<0.50	<0.50	<0.50	<0.50	<5.0
MW-12	06/11/07	<50	<0.50	<0.50	<0.50	<0.50	<0.50	<0.50	<0.50	<0.50	<5.0
MW-12	08/01/07	45	<0.12	<0.15	<0.17	<0.34	<0.12	<0.13	<0.15	<0.17	<6.9
MW-12	02/27/08	<6.6	<0.18	<0.24	<0.21	<0.45	<0.20	<0.23	<0.19	<0.19	<10
MW-12	05/13/08	<50	<0.5	<0.5	<0.5	<0.5	<0.5	<0.5	<0.5	<0.5	<5.0
MW-12	08/27/08	<50	<0.5	<0.5	<0.5	<0.5	<0.5	<0.5	<0.5	<0.5	<5.0
MW-13	02/10/95	<50	<0.5	<0.5	<0.5	<0.5	--	--	--	--	--
MW-13	03/10/95	--	--	--	--	--	--	--	--	--	--
MW-13	03/14/95	<50	<0.5	<0.5	<0.5	1	--	--	--	--	--
MW-13	09/23/96	<	<	0.8	1	<	--	--	<	--	--
MW-13	12/04/96	--	--	--	--	--	--	--	--	--	--
MW-13	04/08/97	<	<	<	<	<	--	--	<	--	--
MW-13	06/30/97	--	--	--	--	--	--	--	--	--	--
MW-13	11/25/97	--	--	--	--	--	--	--	--	--	--
MW-13	06/01/98	--	--	--	--	--	--	--	--	--	--
MW-13	06/14/01	<50	<0.50	<0.50	<0.50	<0.50	--	--	<5.0	--	--
MW-13	11/07/01	<50	<0.5	<0.5	<0.5	<0.5	<0.5	<0.5	<0.5	<0.5	<5.0
MW-13	01/30/02	<50	<0.5	<0.5	<0.5	<0.5	<0.5	<0.5	<0.5	<0.5	<5.0
MW-13	05/29/02	<50	<0.5	<0.5	<0.5	<0.5	<0.5	<0.5	<0.5	<0.5	<5.0
MW-13	08/14/02	<50	<0.5	<0.5	<0.5	<0.5	<0.5	<0.5	<0.5	<0.5	<5.0

TABLE 2
RESULTS OF LABORATORY ANALYSIS OF GROUNDWATER SAMPLES
October 1992 through August 2008
EZ Serve 100877, 525 West A Street, Hayward, CA

Well Number	Date Sampled	TPH-G (ug/l)	Benzene (ug/l)	Toluene (ug/l)	Ethyl-benzene (ug/l)	Total Xylenes (ug/l)	DIPE (ug/l)	ETBE (ug/l)	MTBE (ug/l)	TAME (ug/l)	TBA (ug/l)
MW-13	11/15/02	--	--	--	--	--	--	--	--	--	--
MW-13	10/25/04	Well not sampled. Unable to locate well due to parked cars					--	--	--	--	--
MW-14	02/10/95	12,000	42	8	740	2,100	--	--	--	--	--
MW-14	03/10/95	--	--	--	--	--	--	--	--	--	--
MW-14	03/14/95	1,400	6	2	36	298	--	--	--	--	--
MW-14	09/23/96	6,400	2.8	<	690	96	--	--	9.6	--	--
MW-14	12/04/96	9,500	6.3	<	1,100	400	--	--	30	--	--
MW-14	04/08/97	2,900	<	2.7	220	21	--	--	<	--	--
MW-14	06/30/97	74	1.3	<	0.51	0.68	--	--	<	--	--
MW-14	11/25/97	<	<	<	<	<	--	--	<	--	--
MW-14	06/01/98	<50	<0.5	<0.5	<0.5	<0.5	--	--	<5	--	--
MW-14	06/14/01	470	<0.5	<0.5	2.8	1	--	--	<5	--	--
MW-14	11/07/01	<50	<0.5	<0.5	<0.5	<0.5	<0.5	<0.5	<0.5	<0.5	<5.0
MW-14	01/30/02	<50	<0.5	<0.5	<0.5	<0.5	<0.5	<0.5	<0.5	<0.5	<5.0
MW-14	05/29/02	<50	<0.5	<0.5	<0.5	<0.5	<0.5	<0.5	<0.5	<0.5	<5.0
MW-14	08/14/02	<50	<0.5	<0.5	<0.5	<0.5	<0.5	<0.5	<0.5	<0.5	<5.0
MW-14	11/15/02	<50	<0.5	<0.5	<0.5	<0.5	<0.5	<0.5	<0.5	<0.5	<5.0
MW-14	10/25/04	Well not sampled. Unable to locate well due to parked cars					--	--	--	--	--
MW-14	02/25/05	210	<0.5	<0.5	<0.5	<0.5	<0.5	<0.5	<0.5	<0.5	<5.0
MW-14	05/19/05	230	<0.5	<0.5	<0.5	<0.5	<0.5	<0.5	<0.5	<0.5	<0.5
MW-14	09/15/05	Well not sampled due to lack of traffic contro					--	--	--	--	--
MW-14	11/10/05	Well not sampled due to lack of traffic contro					--	--	--	--	--
MW-14	03/20/06	180	<0.5	<0.5	<0.5	<0.5	<0.5	<0.5	<0.5	<0.5	<5.0
MW-14	05/25/06	<50	<0.5	<0.5	<0.5	<0.5	<0.5	<0.5	<0.5	<0.5	<5.0
MW-14	08/23/06	99	<0.5	<0.5	<0.5	<0.5	<0.5	<0.5	<0.5	<0.5	<5.0
MW-14	03/14/07	<50	<0.5	<0.5	<0.5	<0.5	<0.5	<0.5	<0.5	<0.5	<5.0
MW-14	06/11/07	<50	<0.5	<0.5	<0.5	<0.5	<0.5	<0.5	<0.5	<0.5	<5.0
MW-14	08/01/07	53	<0.12	<0.15	<0.17	<0.34	<0.12	<0.13	<0.15	<0.17	<6.9
MW-14	02/27/08	<6.6	<0.18	<0.24	<0.21	<0.45	<0.20	<0.23	<0.19	<0.19	<10
MW-14	05/13/08	<50	<0.5	<0.5	<0.5	<0.5	<0.5	<0.5	<0.5	<0.5	<5.0
MW-14	08/27/08	<50	<0.5	<0.5	<0.5	<0.5	<0.5	<0.5	<0.5	<0.5	<5.0
EX-1	08/14/02	250	31	<0.5	<0.5	4	<0.5	<0.5	1.4	<0.5	<5.0
EX-1	11/15/02	67	4.1	<0.5	<0.5	<0.5	<0.5	<0.5	0.7	<0.5	<5.0
EX-1	10/25/04	96	2.1	<0.50	4.9	1.8	<0.5	<0.5	<0.5	<0.5	<5.0

TABLE 2
RESULTS OF LABORATORY ANALYSIS OF GROUNDWATER SAMPLES
October 1992 through August 2008
EZ Serve 100877, 525 West A Street, Hayward, CA

Well Number	Date Sampled	TPH-G (ug/l)	Benzene (ug/l)	Toluene (ug/l)	Ethyl-benzene (ug/l)	Total Xylenes (ug/l)	DIPE (ug/l)	ETBE (ug/l)	MTBE (ug/l)	TAME (ug/l)	TBA (ug/l)
EX-1	12/23/04	<50	<0.50	<0.50	0.87	<0.50	<0.50	<0.50	<0.50	<0.50	<5.0
EX-1	02/25/05	59	1.4	<0.50	2	0.87	<0.50	<0.50	<0.50	<0.50	<5.0
EX-1	05/19/05	200	3.4	<0.50	3.7	1.8	<0.50	<0.50	1.3	<0.50	<5.0
EX-1	09/15/05	290	7.5	<0.50	2.8	0.66	<0.50	<0.50	1.2	<0.50	<5.0
EX-1	11/10/05	270	5.1	<0.50	9.2	1.5	<0.50	<0.50	0.94	<0.50	<5.0
EX-1	03/20/06	820	7.5	<0.50	15	7.2	<0.50	<0.50	0.94	<0.50	<5.0
EX-1	05/25/06	100	<0.50	<0.50	1	0.9	<0.50	<0.50	0.79	<0.50	<5.0
EX-1	08/23/06	440	7.3	<0.50	0.72	0.61	<0.50	<0.50	1.2	<0.50	<5.0
EX-1	03/14/07	360	1.6	<0.50	8.8	1.8	<0.50	<0.50	1.7	<0.50	<5.0
EX-1	06/11/07	240	1.1	<0.50	6.0	1.4	<0.50	<0.50	4.3	<0.50	<5.0
EX-1	08/01/07	410	2.5	<0.15	4.2	0.92	<0.12	<0.13	3.6	<0.17	<6.9
EX-1	Could not locate well	--	--	--	--	--	--	--	--	--	--
EX-1	08/27/08	348	0.9	<0.5	0.8	<0.5	<0.5	<0.5	94	<0.5	22
VEAS-2	02/25/05	90	1.1	<0.50	0.7	1.3	<0.50	<0.50	1.4	<0.50	<5.0
VEAS-2	05/19/05	<50	<0.50	<0.50	<0.50	<0.50	<0.50	<0.50	<0.50	<0.50	<5.0
VEAS-2	11/10/05	--	--	--	--	--	--	--	--	--	--

Notes:

TPH-G = total petroleum hydrocarbons with gasoline distinction

MTBE = methyl tertiary butyl ether

DIPE = di-isopropyl ether

ETBE = ethyl-tert-butyl ether

TAME = tert-amyl methyl ether

TBA = tert butanol

ug/l = micrograms per liter

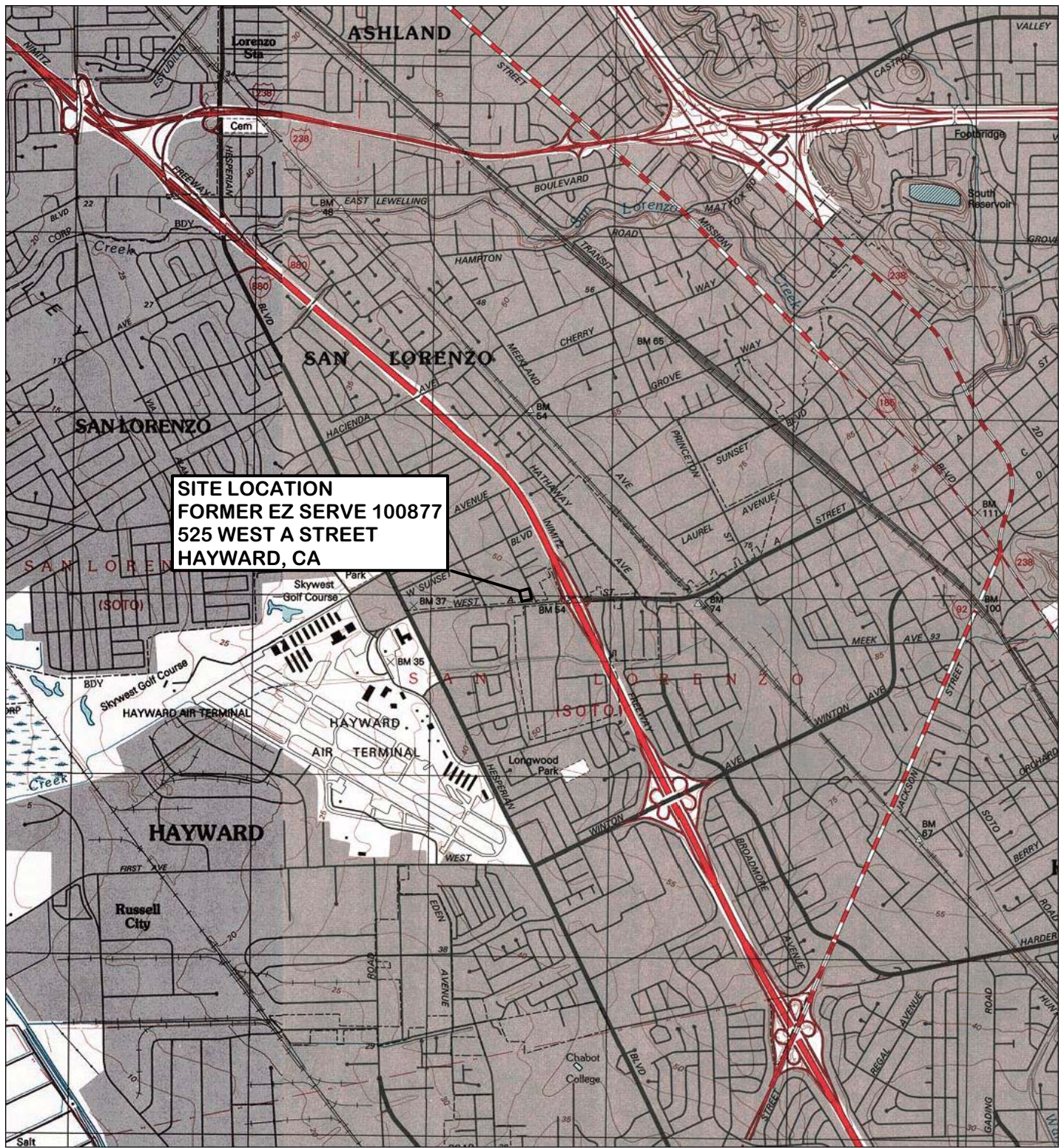
-- = not analyzed, measured, or collected

< = Sample reported as "not detected", in previous tables, reporting limit not known (Delta Environmental)

Note: No known groundwater sampling was conducted between June 1, 1998 and June 14, 2001, June 14, 2001 and November 7, 2001

Wellhead elevations resurveyed on January 30, 2002.

FIGURES



0 1000 FEET 0 500 1000 METERS
 Printed from TOPO! ©2001 National Geographic Holdings (www.topo.com)

GEOENVIRO SERVICES, INC.

SITE LOCATION MAP

FORMER EZ SERVE STATION NO. 100877
 525 WEST A STREET
 HAYWARD, CA

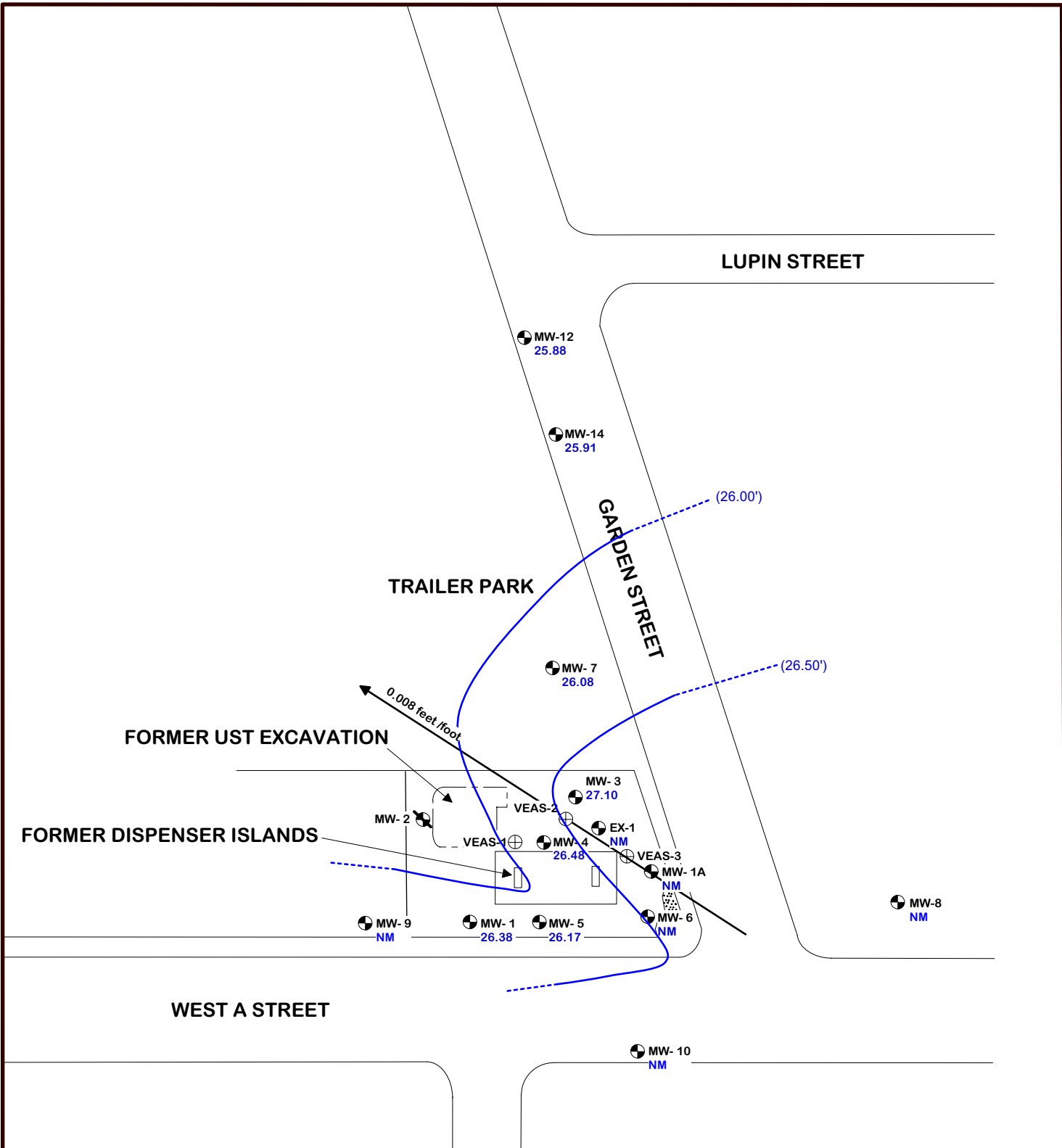
OCTOBER 2008

FIGURE 1

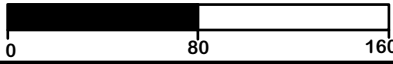
DRAWN BY: JPS

CLIENT: RPMS





SCALE 1" = 80'



DRAWN BY: GRS
 REVISION DATE: October 2, 2008
 CLIENT: RPMS

LEGEND

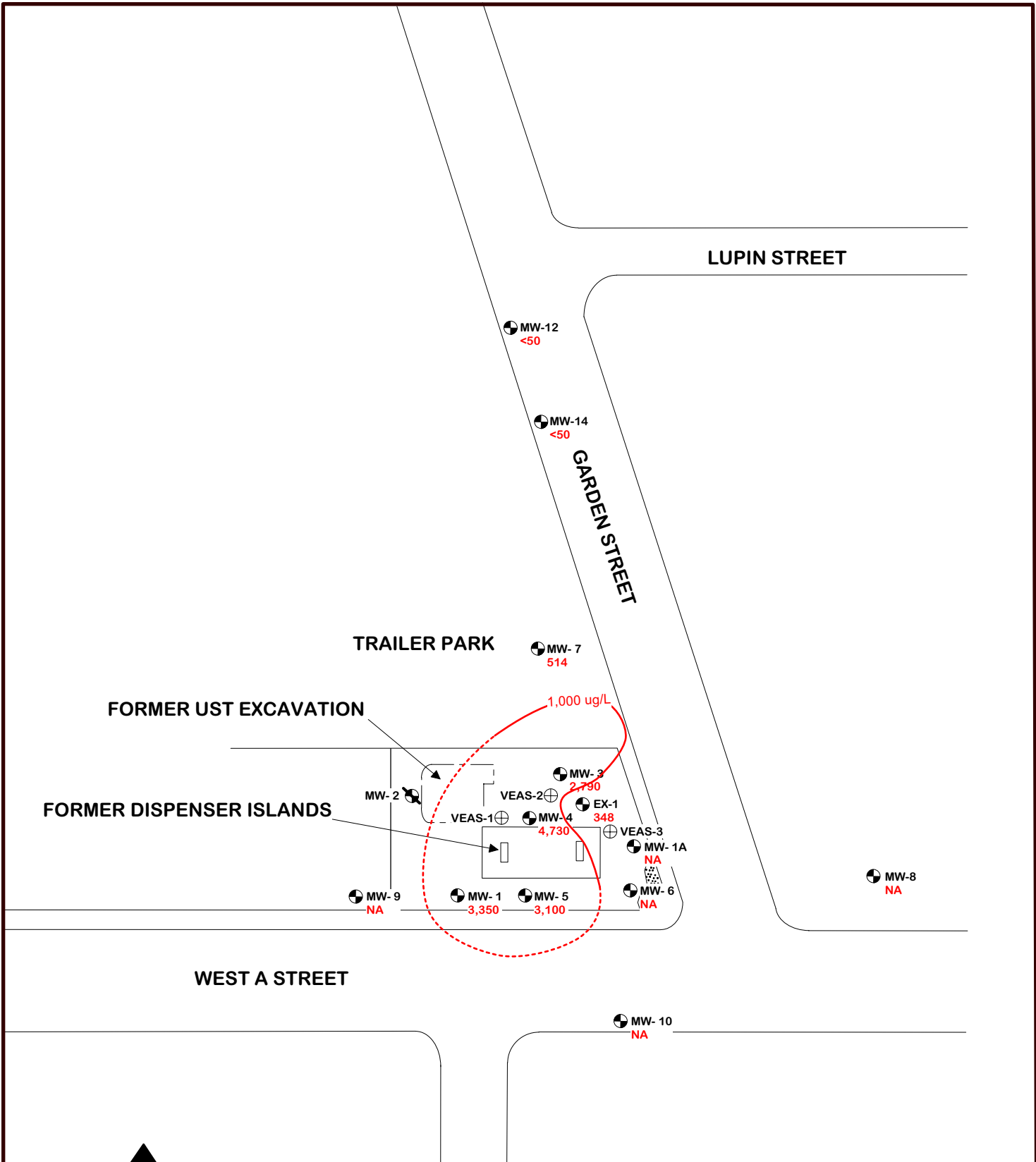
- MW-1 GROUNDWATER MONITORING WELL WITH GROUNDWATER ELEVATION IN FEET AMSL AS MEASURED ON 8/27/08
- EX-1 GROUNDWATER EXTRACTION WELL
- VEAS-2 REMEDIATION WELL
- MW-2 DESTROYED GROUNDWATER MONITORING WELL
- NM NOT MEASURED
- (29.0)' GROUNDWATER ELEVATION CONTOUR IN FEET ABOVE MEAN SEA LEVEL AS MEASURED 5/13/08

GEOENVIRO SERVICES, INC.

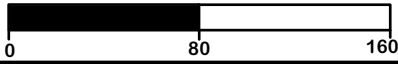
SITE MAP WITH CONTOURS OF GROUNDWATER ELEVATION THIRD QUARTER 2008

FORMER EZ SERVE STATION NO. 100877
 525 WEST A STREET
 HAYWARD, CA

OCTOBER 2008 **FIGURE 2**



SCALE 1" = 80'



DRAWN BY: GRS
 REVISION DATE: OCTOBER 2, 2008
 CLIENT: RPMS

LEGEND

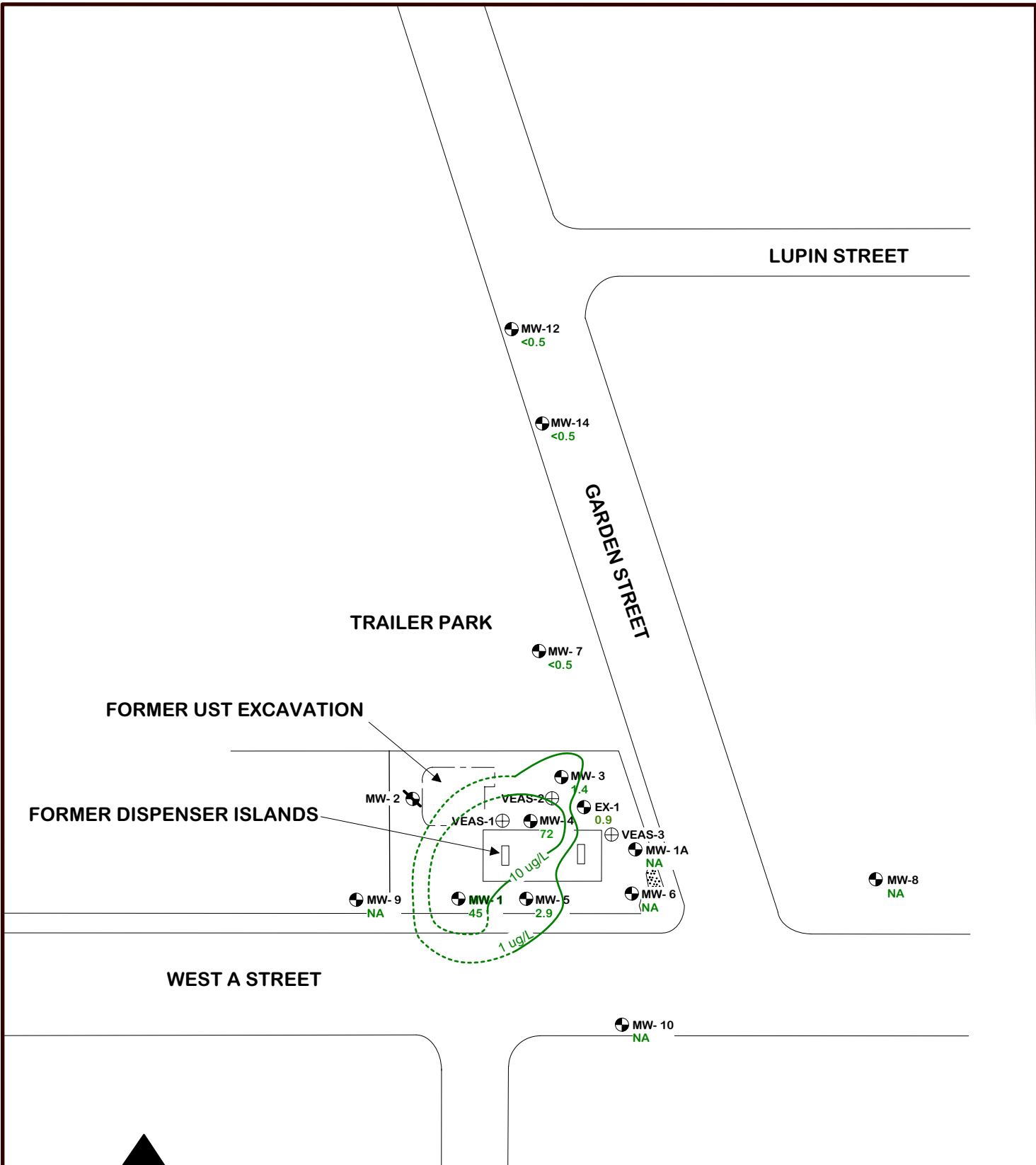
- MW-1 GROUNDWATER MONITORING WELL WITH TPHg CONCENTRATIONS IN ug/L AS MEASURED ON 8/27/08
- EX-1 GROUNDWATER EXTRACTION WELL
- VEAS-2 REMEDIATION WELL
- MW-2 DESTROYED GROUNDWATER MONITORING WELL
- 1,000 ug/L TPHg IN GROUNDWATER CONCENTRATION CONTOUR
- NA - NOT ANALYZED

GEOENVIRO SERVICES, INC.

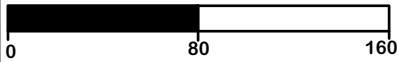
SITE MAP WITH CONTOURS OF THPg CONCENTRATIONS IN GROUNDWATER THIRD QUARTER 2008

FORMER EZ SERVE STATION NO. 100877
 525 WEST A STREET
 HAYWARD, CA

OCTOBER 2008 **FIGURE 3**



SCALE 1" = 80'



DRAWN BY: GRS
 REVISION DATE: OCTOBER 2, 2008
 CLIENT: RPMS

LEGEND

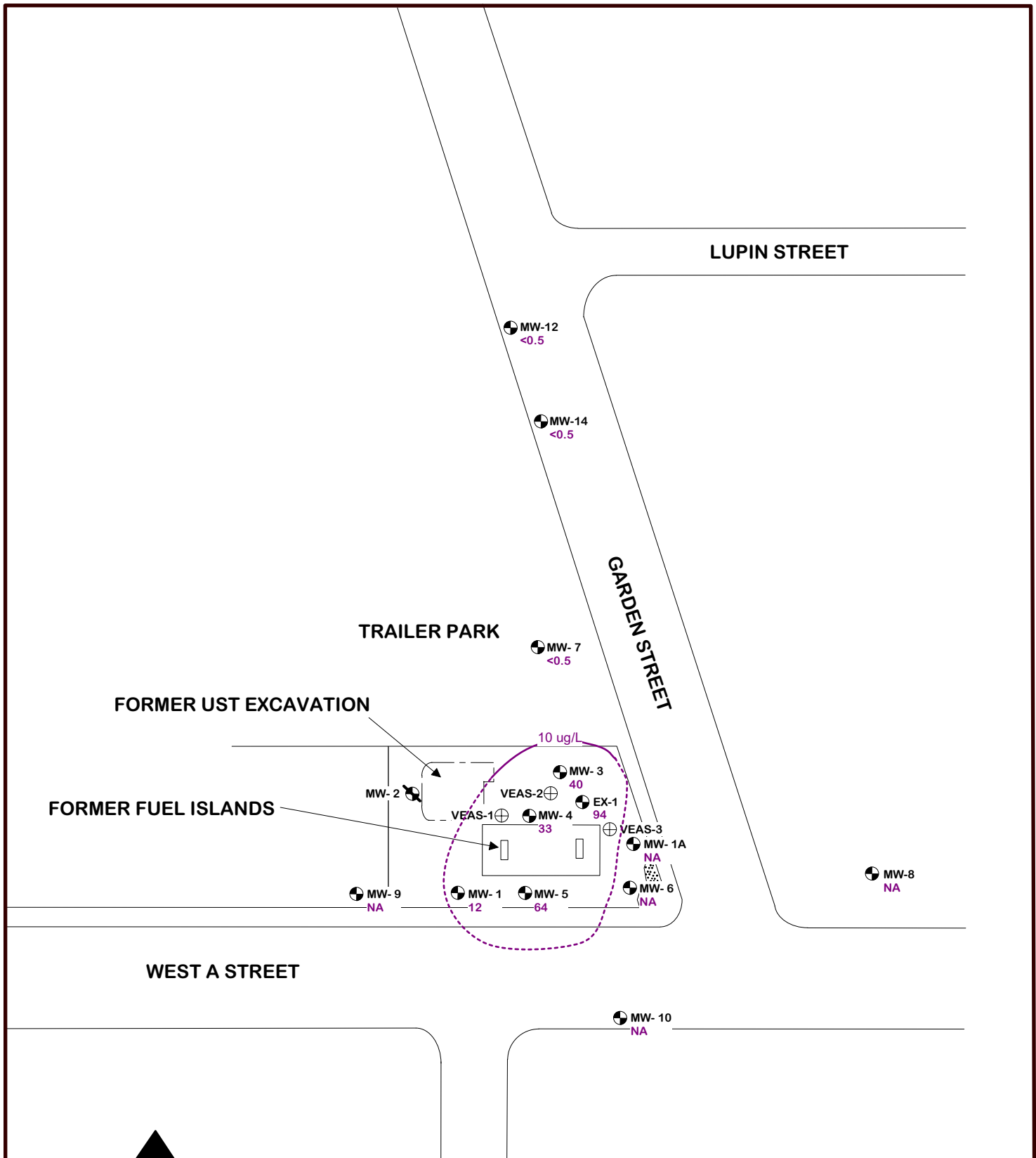
- MW-1 GROUNDWATER MONITORING WELL WITH BENZENE CONCENTRATIONS IN ug/L AS MEASURED ON 8/27/08
- EX-1 GROUNDWATER EXTRACTION WELL
- VEAS-2 REMEDIATION WELL NA - NOT ANALYZED
- MW-2 DESTROYED GROUNDWATER MONITORING WELL
- 10 ug/L BENZENE IN GROUNDWATER CONCENTRATION CONTOUR

GEOENVIRO SERVICES, INC.

SITE MAP WITH CONTOURS OF BENZENE CONCENTRATIONS IN GROUNDWATER THIRD QUARTER 2008

FORMER EZ SERVE STATION NO. 100877
 525 WEST A STREET
 HAYWARD, CA

OCTOBER 2008 **FIGURE 4**



SCALE 1" = 80'



DRAWN BY: GRS
 REVISION DATE: OCTOBER 2, 2008
 CLIENT: RPMS

LEGEND

- MW-1 GROUNDWATER MONITORING WELL WITH MTBE CONCENTRATIONS IN ug/L AS MEASURED ON 8/27/08
- EX-1 GROUNDWATER EXTRACTION WELL
- VEAS-2 REMEDIATION WELL
- MW-2 DESTROYED GROUNDWATER MONITORING WELL
- 100 ug/L MTBE IN GROUNDWATER CONCENTRATION CONTOUR
- NA - NOT ANALYZED

GEOENVIRO SERVICES, INC.

SITE MAP WITH CONTOURS OF MTBE CONCENTRATIONS IN GROUNDWATER THIRD QUARTER 2008

FORMER EZ SERVE STATION NO. 100877
 525 WEST A STREET
 HAYWARD, CA

OCTOBER 2008 FIGURE 5

ATTACHMENT A
GENERAL GROUNDWATER MONITORING FIELD PROCEDURES

Groundwater Sampling Protocol

Monitoring Wells

Prior to purging a monitoring well, groundwater levels are measured with a Solinst electric depth measurement device, or an interface probe, in all wells that are to be measured. At sites where petroleum hydrocarbons are possible contaminants, the well is checked for floating product using an interface probe. If floating product is measured during the initial sampling round or noted during subsequent sampling rounds, floating product measurements are continued.

After the water level and floating product measurements are complete, the monitoring well is purged until a minimum of three casing volumes of water are removed, water is relatively clear of sediment, and pH, conductivity, and temperature measurements of the water become relatively stable. If the well is purged dry, groundwater samples are collected after the water level in the well recovers to at least 80 percent of the original water column measured in the well prior to sampling, or following a maximum recovery period of two hours. The well is purged using a factory-sealed, disposable, polyethylene bailer, a submersible Grundfos pump, or a peristaltic pump. The purge water is stored on-site in clean, 55-gallon drums or aboveground tanks.

A groundwater sample is collected from each monitoring well following re-equilibration of the well after purging. The groundwater sample is collected using a factory-sealed disposable, polyethylene bailer with a sampling port, or a factory-sealed Teflon bailer. A factory provided attachment designed for use with volatile organic compounds (VOCs) is attached to the polyethylene bailer sampling port when collecting samples to be analyzed for VOCs. The groundwater sample is transferred from the bailer into sample container(s) that are obtained directly from the analytical laboratory.

The sample container(s) is labeled with a self-adhesive tag. The following information is included on the tag:

- Project number
- Sample number
- Date and time sample is collected
- Initials of sample collector(s).

Individual log sheets are maintained throughout the sampling operations. The following information is recorded:

- Sample number
- Date and time well sampled and purged
- Sampling location
- Types of sampling equipment used
- Name of sampler(s)
- Volume of water purged.

Following collection of the groundwater sample, the sample is immediately stored on blue ice in an appropriate container. A chain-of-custody form is completed with the following information:

- Date the sample was collected
- Sample number and the number of containers
- Analyses required
- Remarks including preservatives added and any special conditions.

The original copy of the chain-of-custody form accompanies the sample containers to a California-certified laboratory. A copy is retained by GeoEnviro Services and placed in company files.

Sampling equipment including thermometers, pH electrodes, and conductivity probes are cleaned both before and after their use at the site. The following cleaning procedures are used:

- Scrub with a potable water and detergent solution using a hard bristle brush
- Rinse with potable water
- Double-rinse with organic-free or deionized water
- Package and seal equipment in plastic bags or other appropriate containers to prevent contact with solvents, dust, or other contaminants.

In addition, the pumps are cleaned by pumping a potable water and detergent solution and deionized water through the system. Cleaning solutions are contained on-site in clean 55-gallon drums.

Domestic and Irrigation Wells

Groundwater samples collected from domestic or irrigation wells are collected from the spigot that is the closest to the well. Prior to collecting the sample, the spigot is allowed to flow for at least 5 minutes to purge the well. The sample is then collected directly into laboratory-supplied containers, sealed, labeled, and stored on blue ice in an appropriate container, as described above. A chain-of-custody form is completed and submitted with the samples to the analytical laboratory.

ATTACHMENT B
GROUNDWATER MONITORING AND SAMPLING
FIELD DOCUMENTATION

GROUNDWATER SAMPLING LOG

Project No: 07-131
 Project Name: Former EZ Serve No. 100877
 Location: 525 West A Street, Hayward, CA

Well I.D.: MW-1
 Sampled By: J. Schaaf
 Date: 8/27/2008

Well Diameter:	4
Total Well Depth:	18
Depth to Water:	15.37
Water Column:	2.63
Calculated Purge:	5.26
Actual Purge:	--
Free Product?	--
Product Sheen?	--

Purge Volume Calculations	
For 3 Casing Volume Purge:	
2-inch Diameter Well:	0.5 gallons/linear foot
4-inch Diameter Well:	2 gallons/linear foot
1-inch Diameter Well:	0.123 gallons/linear foot
1.25-inch Diameter Well:	0.191 gallons/linear foot
1.5-inch Diameter Well:	0.275 gallons/linear foot

Purge Method: --
 Did Well Go Dry? --

Sampling Method: Disposable Bailer
 Sample Time: 10:10

Post Purge DTWs:

Time	DTW

Analyze for):

TPH Diesel - TPH Motor Oil	
TPH Gasoline	x
BTEX	x
Petroleum Oxygenates	x
Lead Scavengers	
Other:	

Laboratory: Associated Laboratories

Time	Conductivity	Temp.	pH	Volume Purged (gal)	Comments
					Not enough water to purge
					Soil in well?

Additional Comments:

No Purge - Sample Only

GROUNDWATER SAMPLING LOG

Project No: 07-131
 Project Name: Former EZ Serve No. 100877
 Location: 525 West A Street, Hayward, CA

Well I.D.: MW-3
 Sampled By: J. Schaaf
 Date: 8/27/2008

Well Diameter:	4
Total Well Depth:	34
Depth to Water:	16.79
Water Column:	17.21
Calculated Purge:	34.42
Actual Purge:	34
Free Product?	NO
Product Sheen?	NO

Purge Volume Calculations	
For 3 Casing Volume Purge:	
2-inch Diameter Well:	0.5 gallons/linear foot
4-inch Diameter Well:	2 gallons/linear foot
1-inch Diameter Well:	0.123 gallons/linear foot
1.25-inch Diameter Well:	0.191 gallons/linear foot
1.5-inch Diameter Well:	0.275 gallons/linear foot

Purge Method: Sub Pump
 Did Well Go Dry? No

Sampling Method: Disposable Bailer
 Sample Time: 10:30

Post Purge DTWs:

Time	DTW
10:30	16.51

Analyze for):	
TPH Diesel - TPH Motor Oil	
TPH Gasoline	x
BTEX	x
Petroleum Oxygenates	x
Lead Scavengers	
Other:	

Laboratory: Associated Laboratories

Time	Conductivity	Temp.	pH	Volume Purged (gal)	Comments
8:34	623	19.8	6.70	7	
8:37	640	19.3	6.69	14	
8:40	649	19.3	6.69	21	
8:42	650	19.3	6.70	28	
8:45	651	19.2	6.68	34	

Additional Comments:

GROUNDWATER SAMPLING LOG

Project No: 07-131
 Project Name: Former EZ Serve No. 100877
 Location: 525 West A Street, Hayward, CA

Well I.D.: MW-4
 Sampled By: J. Schaaf
 Date: 8/27/2008

Well Diameter:	4
Total Well Depth:	30
Depth to Water:	16.28
Water Column:	13.72
Calculated Purge:	27.44
Actual Purge:	27
Free Product?	NO
Product Sheen?	NO

Purge Volume Calculations	
For 3 Casing Volume Purge:	
2-inch Diameter Well:	0.5 gallons/linear foot
4-inch Diameter Well:	2 gallons/linear foot
1-inch Diameter Well:	0.123 gallons/linear foot
1.25-inch Diameter Well:	0.191 gallons/linear foot
1.5-inch Diameter Well:	0.275 gallons/linear foot

Purge Method: Sub Pump
 Did Well Go Dry? No

Sampling Method: Disposable Bailer
 Sample Time: 10:50

Post Purge DTWs:

Time	DTW
10:50	16.46

Analyze for):	
TPH Diesel - TPH Motor Oil	
TPH Gasoline	x
BTEX	x
Petroleum Oxygenates	x
Lead Scavengers	
Other:	

Laboratory: Associated Laboratories

Time	Conductivity	Temp.	pH	Volume Purged (gal)	Comments
9:25	672	19.8	6.72	7	
9:28	674	19.1	6.70	14	
9:31	672	19.0	6.71	21	
9:35	671	19.0	6.72	27	

Additional Comments:

GROUNDWATER SAMPLING LOG

Project No: 07-131
 Project Name: Former EZ Serve No. 100877
 Location: 525 West A Street, Hayward, CA

Well I.D.: MW-5
 Sampled By: J. Schaaf
 Date: 8/27/2008

Well Diameter:	4
Total Well Depth:	30
Depth to Water:	15.93
Water Column:	14.07
Calculated Purge:	28.14
Actual Purge:	28
Free Product?	NO
Product Sheen?	NO

Purge Volume Calculations	
For 3 Casing Volume Purge:	
2-inch Diameter Well:	0.5 gallons/linear foot
4-inch Diameter Well:	2 gallons/linear foot
1-inch Diameter Well:	0.123 gallons/linear foot
1.25-inch Diameter Well:	0.191 gallons/linear foot
1.5-inch Diameter Well:	0.275 gallons/linear foot

Purge Method: Sub Pump
 Did Well Go Dry? No

Sampling Method: Disposable Bailer
 Sample Time: 10:00

Post Purge DTWs:

Time	DTW
10:00	15.22

Analyze for):	
TPH Diesel - TPH Motor Oil	
TPH Gasoline	x
BTEX	x
Petroleum Oxygenates	x
Lead Scavengers	
Other:	

Laboratory: Associated Laboratories

Time	Conductivity	Temp.	pH	Volume Purged (gal)	Comments
8:13	576	19.3	6.70	7	
8:17	700	19.7	6.72	14	
8:20	704	19.8	6.69	21	
8:24	648	19.8	6.65	20	

Additional Comments:

GROUNDWATER SAMPLING LOG

Project No: 07-131
 Project Name: Former EZ Serve No. 100877
 Location: 525 West A Street, Hayward, CA

Well I.D.: MW-7
 Sampled By: J. Schaaf
 Date: 8/27/2008

Well Diameter:	2
Total Well Depth:	30
Depth to Water:	16.62
Water Column:	13.38
Calculated Purge:	6.69
Actual Purge:	7
Free Product?	NO
Product Sheen?	NO

Purge Volume Calculations	
For 3 Casing Volume Purge:	
2-inch Diameter Well:	0.5 gallons/linear foot
4-inch Diameter Well:	2 gallons/linear foot
1-inch Diameter Well:	0.123 gallons/linear foot
1.25-inch Diameter Well:	0.191 gallons/linear foot
1.5-inch Diameter Well:	0.275 gallons/linear foot

Purge Method: Sub Pump
 Did Well Go Dry? No

Sampling Method: Disposable Bailer
 Sample Time: 9:40

Post Purge DTWs:

Time	DTW
9:40	16.11

Analyze for):

TPH Diesel - TPH Motor Oil	
TPH Gasoline	x
BTEX	x
Petroleum Oxygenates	x
Lead Scavengers	
Other:	

Laboratory: Associated Laboratories

Time	Conductivity	Temp.	pH	Volume Purged (gal)	Comments
8:06	530	18.5	6.82	2	
8:08	536	18.2	6.82	4	
8:10	534	18.2	6.75	7	

Additional Comments:

GROUNDWATER SAMPLING LOG

Project No: 07-131
 Project Name: Former EZ Serve No. 100877
 Location: 525 West A Street, Hayward, CA

Well I.D.: MW-12
 Sampled By: J. Schaaf
 Date: 8/27/2008

Well Diameter:	2
Total Well Depth:	30
Depth to Water:	17.37
Water Column:	12.63
Calculated Purge:	6.3
Actual Purge:	6.5
Free Product?	NO
Product Sheen?	NO

Purge Volume Calculations	
For 3 Casing Volume Purge:	
2-inch Diameter Well:	0.5 gallons/linear foot
4-inch Diameter Well:	2 gallons/linear foot
1-inch Diameter Well:	0.123 gallons/linear foot
1.25-inch Diameter Well:	0.191 gallons/linear foot
1.5-inch Diameter Well:	0.275 gallons/linear foot

Purge Method: Sub Pump
 Did Well Go Dry? No

Sampling Method: Disposable Bailer
 Sample Time: 9:15

Post Purge DTWs:

Time	DTW
9:15	17.82

Analyze for):	
TPH Diesel - TPH Motor Oil	x
TPH Gasoline	x
BTEX	x
Petroleum Oxygenates	x
Lead Scavengers	
Other:	

Laboratory: Associated Laboratories

Time	Conductivity	Temp.	pH	Volume Purged (gal)	Comments
7:54	518	18.1	6.86	2	
7:55	516	18.6	6.78	4	
7:56	518	18.7	6.77	6.5	

Additional Comments:

GROUNDWATER SAMPLING LOG

Project No: 07-131
 Project Name: Former EZ Serve No. 100877
 Location: 525 West A Street, Hayward, CA

Well I.D.: MW-14
 Sampled By: J. Schaaf
 Date: 8/27/2008

Well Diameter:	2
Total Well Depth:	30
Depth to Water:	17.28
Water Column:	12.72
Calculated Purge:	6.3
Actual Purge:	6.5
Free Product?	NO
Product Sheen?	NO

Purge Volume Calculations	
For 3 Casing Volume Purge:	
2-inch Diameter Well:	0.5 gallons/linear foot
4-inch Diameter Well:	2 gallons/linear foot
1-inch Diameter Well:	0.123 gallons/linear foot
1.25-inch Diameter Well:	0.191 gallons/linear foot
1.5-inch Diameter Well:	0.275 gallons/linear foot

Purge Method: Sub Pump
 Did Well Go Dry? No

Sampling Method: Disposable Bailer
 Sample Time: 9:30

Post Purge DTWs:

Time	DTW
9:30	18.76

Analyze for):

TPH Diesel - TPH Motor Oil	
TPH Gasoline	x
BTEX	x
Petroleum Oxygenates	x
Lead Scavengers	
Other:	

Laboratory: Associated Laboratories

Time	Conductivity	Temp.	pH	Volume Purged (gal)	Comments
7:49	425	18	6.6	2	
7:50	417	18.6	6.57	4	
7:51	425	18.7	6.66	6.5	

Additional Comments:

GROUNDWATER SAMPLING LOG

Project No: 07-131
 Project Name: Former EZ Serve No. 100877
 Location: 525 West A Street, Hayward, CA

Well I.D.: EX-1
 Sampled By: J. Schaaf
 Date: 8/27/2008

Well Diameter:	6
Total Well Depth:	34
Depth to Water:	16.70
Water Column:	17.3
Calculated Purge:	51.9
Actual Purge:	52
Free Product?	NO
Product Sheen?	NO

Purge Volume Calculations	
For 3 Casing Volume Purge:	
2-inch Diameter Well:	0.5 gallons/linear foot
4-inch Diameter Well:	2 gallons/linear foot
1-inch Diameter Well:	0.123 gallons/linear foot
1.25-inch Diameter Well:	0.191 gallons/linear foot
1.5-inch Diameter Well:	0.275 gallons/linear foot

Purge Method: Sub Pump
 Did Well Go Dry? No

Sampling Method: Disposable Bailer
 Sample Time: 10:40

Post Purge DTWs:

Time	DTW
10:40	16.10

Analyze for):	
TPH Diesel - TPH Motor Oil	
TPH Gasoline	x
BTEX	x
Petroleum Oxygenates	x
Lead Scavengers	
Other:	

Laboratory: Associated Laboratories

Time	Conductivity	Temp.	pH	Volume Purged (gal)	Comments
8:55	637	20.2	6.60	5	
8:59	643	19.7	6.60	10	
9:05	656	19.7	6.65	20	
9:10	658	19.6	6.65	30	
9:16	662	19.6	6.66	40	
9:20	664	19.6	6.65	52	

Additional Comments:

**ATTACHMENT C
LABORATORY ANALYTICAL REPORTS
AND CHAIN OF CUSTODY DOCUMENTATION**



ASSOCIATED LABORATORIES

806 North Batavia - Orange, California 92868 - 714/771-6900

FAX 714/538-1209

CLIENT GeoEnviro Services, Inc. (12421)
ATTN: Joseph Schaaf
5529 Kailas St.
Ventura, CA 93003

LAB REQUEST 218976

REPORTED 09/04/2008

RECEIVED 08/28/2008

PROJECT #07-131
EZ Serve 100877

SUBMITTER Client

COMMENTS Global ID #T0600100483

This laboratory request covers the following listed samples which were analyzed for the parameters indicated on the attached Analytical Result Report. All analyses were conducted using the appropriate methods as indicated on the report. This cover letter is an integral part of the final report.

<u>Order No.</u>	<u>Client Sample Identification</u>
927159	MW-1
927160	MW-3
927161	MW-4
927162	MW-5
927163	MW-7
927164	MW-12
927165	MW-14
927166	EX-1
927167	Laboratory Method Blank

Thank you for the opportunity to be of service to your company. Please feel free to call if there are any questions regarding this report or if we can be of further service.

ASSOCIATED LABORATORIES by,

Edward S. Behare, Ph.D.
Vice President

NOTE: Unless notified in writing, all samples will be discarded by appropriate disposal protocol 30 days from date reported.

The reports of the Associated Laboratories are confidential property of our clients and may not be reproduced or used for publication in part or in full without our written permission. This is for the mutual protection of the public, our clients, and ourselves.

TESTING & CONSULTING
Chemical
Microbiological
Environmental

Order #: 927159

Client: GeoEnviro Services, Inc.

Matrix: WATER

Client Sample ID: MW-1

Date Sampled: 08/27/2008

Time Sampled: 10:10

Sampled By:

Analyte	Result	DF	DLR	Units	Date/Analyst
---------	--------	----	-----	-------	--------------

8260B VOC Oxygenates - Low DLR (0.5)

Di-isopropyl ether (DIPE)	ND	1	0.5	ug/L	08/31/08 YL
Ethyl-tertbutylether (ETBE)	ND	1	0.5	ug/L	08/31/08 YL
Tert-amylmethylether (TAME)	ND	1	0.5	ug/L	08/31/08 YL
Tertiary butyl alcohol (TBA)	9.1	1	5.0	ug/L	08/31/08 YL
Benzene	45	1	0.5	ug/L	08/31/08 YL
Ethyl benzene	261	2	1.0	ug/L	09/03/08 YL
Methyl-tert-butylether (MTBE)	12	1	0.5	ug/L	08/31/08 YL
Toluene	1.1	1	0.5	ug/L	08/31/08 YL
Xylenes, total	16	1	0.5	ug/L	08/31/08 YL

Surrogates

				Units	Control Limits
Surr1 - Dibromofluoromethane	93			%	70 - 135
Surr2 - 1,2-Dichloroethane-d4	74			%	70 - 135
Surr3 - Toluene-d8	96			%	70 - 135
Surr4 - p-Bromofluorobenzene	92			%	70 - 135

8015B - Gasoline

Gasoline	3350	5	250.0	ug/L	09/02/08 LT
----------	------	---	-------	------	-------------

Surrogates

				Units	Control Limits
p-Bromofluorobenzene (Sur)	64			%	60 - 140

DLR = Detection limit for reporting purposes, ND = Not Detected below indicated detection limit, DF = Dilution Factor



Order #: 927160

Client: GeoEnviro Services, Inc.

Matrix: WATER

Client Sample ID: MW-3

Date Sampled: 08/27/2008

Time Sampled: 10:30

Sampled By:

Analyte	Result	DF	DLR	Units	Date/Analyst
---------	--------	----	-----	-------	--------------

8260B VOC Oxygenates - Low DLR (0.5)

Di-isopropyl ether (DIPE)	ND	1	0.5	ug/L	08/31/08 YL
Ethyl-tertbutylether (ETBE)	ND	1	0.5	ug/L	08/31/08 YL
Tert-amylmethylether (TAME)	ND	1	0.5	ug/L	08/31/08 YL
Tertiary butyl alcohol (TBA)	18	1	5.0	ug/L	08/31/08 YL
Benzene	1.4	1	0.5	ug/L	08/31/08 YL
Ethyl benzene	56	1	0.5	ug/L	08/31/08 YL
Methyl-tert-butylether (MTBE)	40	1	0.5	ug/L	08/31/08 YL
Toluene	ND	1	0.5	ug/L	08/31/08 YL
Xylenes, total	4.0	1	0.5	ug/L	08/31/08 YL

Surrogates

				Units	Control Limits
Surr1 - Dibromofluoromethane	104			%	70 - 135
Surr2 - 1,2-Dichloroethane-d4	85			%	70 - 135
Surr3 - Toluene-d8	101			%	70 - 135
Surr4 - p-Bromofluorobenzene	99			%	70 - 135

8015B - Gasoline

Gasoline	2790	1	50	ug/L	08/29/08 LT
----------	------	---	----	------	-------------

Surrogates

				Units	Control Limits
p-Bromofluorobenzene (Sur)	94			%	60 - 140

DLR = Detection limit for reporting purposes, ND = Not Detected below indicated detection limit, DF = Dilution Factor



Order #: 927161

Client: GeoEnviro Services, Inc.

Matrix: WATER

Client Sample ID: MW-4

Date Sampled: 08/27/2008

Time Sampled: 10:50

Sampled By:

Analyte	Result	DF	DLR	Units	Date/Analyst
8260B VOC Oxygenates - Low DLR (0.5)					
Di-isopropyl ether (DIPE)	ND	1	0.5	ug/L	08/31/08 YL
Ethyl-tertbutylether (ETBE)	ND	1	0.5	ug/L	08/31/08 YL
Tert-amylmethylether (TAME)	ND	1	0.5	ug/L	08/31/08 YL
Tertiary butyl alcohol (TBA)	18	1	5.0	ug/L	08/31/08 YL
Benzene	72	1	0.5	ug/L	08/31/08 YL
Ethyl benzene	318	10	5.0	ug/L	09/03/08 YL
Methyl-tert-butylether (MTBE)	33	1	0.5	ug/L	08/31/08 YL
Toluene	12	1	0.5	ug/L	08/31/08 YL
Xylenes, total	233	1	0.5	ug/L	08/31/08 YL

Surrogates

Units Control Limits

Surr1 - Dibromofluoromethane	106			%	70 - 135
Surr2 - 1,2-Dichloroethane-d4	86			%	70 - 135
Surr3 - Toluene-d8	98			%	70 - 135
Surr4 - p-Bromofluorobenzene	105			%	70 - 135

8015B - Gasoline

Gasoline	4730	10	500.0	ug/L	08/29/08 LT
----------	------	----	-------	------	-------------

Surrogates

Units Control Limits

p-Bromofluorobenzene (Sur)	102			%	60 - 140
----------------------------	-----	--	--	---	----------

DLR = Detection limit for reporting purposes, ND = Not Detected below indicated detection limit, DF = Dilution Factor



Order #: 927162

Client: GeoEnviro Services, Inc.

Matrix: WATER

Client Sample ID: MW-5

Date Sampled: 08/27/2008

Time Sampled: 10:00

Sampled By:

Analyte	Result	DF	DLR	Units	Date/Analyst
---------	--------	----	-----	-------	--------------

8260B VOC Oxygenates - Low DLR (0.5)

Di-isopropyl ether (DIPE)	ND	1	0.5	ug/L	08/31/08 YL
Ethyl-tertbutylether (ETBE)	ND	1	0.5	ug/L	08/31/08 YL
Tert-amylmethylether (TAME)	ND	1	0.5	ug/L	08/31/08 YL
Tertiary butyl alcohol (TBA)	30	1	5.0	ug/L	08/31/08 YL
Benzene	2.9	1	0.5	ug/L	08/31/08 YL
Ethyl benzene	12	1	0.5	ug/L	08/31/08 YL
Methyl-tert-butylether (MTBE)	64	1	0.5	ug/L	08/31/08 YL
Toluene	2.9	1	0.5	ug/L	08/31/08 YL
Xylenes, total	6.8	1	0.5	ug/L	08/31/08 YL

Surrogates

				Units	Control Limits
Surr1 - Dibromofluoromethane	102			%	70 - 135
Surr2 - 1,2-Dichloroethane-d4	85			%	70 - 135
Surr3 - Toluene-d8	97			%	70 - 135
Surr4 - p-Bromofluorobenzene	98			%	70 - 135

8015B - Gasoline

Gasoline	3100	1	50	ug/L	09/03/08 LT
----------	------	---	----	------	-------------

Surrogates

				Units	Control Limits
p-Bromofluorobenzene (Sur)	60			%	60 - 140

DLR = Detection limit for reporting purposes, ND = Not Detected below indicated detection limit, DF = Dilution Factor



Order #: 927163

Client: GeoEnviro Services, Inc.

Matrix: WATER

Client Sample ID: MW-7

Date Sampled: 08/27/2008

Time Sampled: 09:40

Sampled By:

Analyte	Result	DF	DLR	Units	Date/Analyst
---------	--------	----	-----	-------	--------------

8260B VOC Oxygenates - Low DLR (0.5)

Di-isopropyl ether (DIPE)	ND	1	0.5	ug/L	08/31/08 YL
Ethyl-tertbutylether (ETBE)	ND	1	0.5	ug/L	08/31/08 YL
Tert-amylmethylether (TAME)	ND	1	0.5	ug/L	08/31/08 YL
Tertiary butyl alcohol (TBA)	ND	1	5.0	ug/L	08/31/08 YL
Benzene	ND	1	0.5	ug/L	08/31/08 YL
Ethyl benzene	0.9	1	0.5	ug/L	08/31/08 YL
Methyl-tert-butylether (MTBE)	ND	1	0.5	ug/L	08/31/08 YL
Toluene	ND	1	0.5	ug/L	08/31/08 YL
Xylenes, total	ND	1	0.5	ug/L	08/31/08 YL

Surrogates

				Units	Control Limits
Surr1 - Dibromofluoromethane	92			%	70 - 135
Surr2 - 1,2-Dichloroethane-d4	95			%	70 - 135
Surr3 - Toluene-d8	101			%	70 - 135
Surr4 - p-Bromofluorobenzene	102			%	70 - 135

8015B - Gasoline

Gasoline	514	1	50	ug/L	08/29/08 LT
----------	-----	---	----	------	-------------

Surrogates

				Units	Control Limits
p-Bromofluorobenzene (Sur)	107			%	60 - 140

DLR = Detection limit for reporting purposes, ND = Not Detected below indicated detection limit, DF = Dilution Factor



Order #: 927164

Client: GeoEnviro Services, Inc.

Matrix: WATER

Client Sample ID: MW-12

Date Sampled: 08/27/2008

Time Sampled: 09:15

Sampled By:

Analyte	Result	DF	DLR	Units	Date/Analyst
---------	--------	----	-----	-------	--------------

8260B VOC Oxygenates - Low DLR (0.5)

Di-isopropyl ether (DIPE)	ND	1	0.5	ug/L	08/31/08 YL
Ethyl-tertbutylether (ETBE)	ND	1	0.5	ug/L	08/31/08 YL
Tert-amylmethylether (TAME)	ND	1	0.5	ug/L	08/31/08 YL
Tertiary butyl alcohol (TBA)	ND	1	5.0	ug/L	08/31/08 YL
Benzene	ND	1	0.5	ug/L	08/31/08 YL
Ethyl benzene	ND	1	0.5	ug/L	08/31/08 YL
Methyl-tert-butylether (MTBE)	ND	1	0.5	ug/L	08/31/08 YL
Toluene	ND	1	0.5	ug/L	08/31/08 YL
Xylenes, total	ND	1	0.5	ug/L	08/31/08 YL

Surrogates

				Units	Control Limits
Surr1 - Dibromofluoromethane	75			%	70 - 135
Surr2 - 1,2-Dichloroethane-d4	97			%	70 - 135
Surr3 - Toluene-d8	111			%	70 - 135
Surr4 - p-Bromofluorobenzene	106			%	70 - 135

8015B - Gasoline

Gasoline	ND	1	50	ug/L	08/29/08 LT
----------	----	---	----	------	-------------

Surrogates

				Units	Control Limits
p-Bromofluorobenzene (Sur)	103			%	60 - 140

DLR = Detection limit for reporting purposes, ND = Not Detected below indicated detection limit, DF = Dilution Factor



Order #: 927165

Client: GeoEnviro Services, Inc.

Matrix: WATER

Client Sample ID: MW-14

Date Sampled: 08/27/2008

Time Sampled: 09:30

Sampled By:

Analyte	Result	DF	DLR	Units	Date/Analyst
---------	--------	----	-----	-------	--------------

8260B VOC Oxygenates - Low DLR (0.5)

Di-isopropyl ether (DIPE)	ND	1	0.5	ug/L	08/31/08 YL
Ethyl-tertbutylether (ETBE)	ND	1	0.5	ug/L	08/31/08 YL
Tert-amylmethylether (TAME)	ND	1	0.5	ug/L	08/31/08 YL
Tertiary butyl alcohol (TBA)	ND	1	5.0	ug/L	08/31/08 YL
Benzene	ND	1	0.5	ug/L	08/31/08 YL
Ethyl benzene	ND	1	0.5	ug/L	08/31/08 YL
Methyl-tert-butylether (MTBE)	ND	1	0.5	ug/L	08/31/08 YL
Toluene	ND	1	0.5	ug/L	08/31/08 YL
Xylenes, total	ND	1	0.5	ug/L	08/31/08 YL

Surrogates

				Units	Control Limits
Surr1 - Dibromofluoromethane	75			%	70 - 135
Surr2 - 1,2-Dichloroethane-d4	95			%	70 - 135
Surr3 - Toluene-d8	111			%	70 - 135
Surr4 - p-Bromofluorobenzene	110			%	70 - 135

8015B - Gasoline

Gasoline	ND	1	50	ug/L	08/29/08 LT
----------	----	---	----	------	-------------

Surrogates

				Units	Control Limits
p-Bromofluorobenzene (Sur)	100			%	60 - 140

DLR = Detection limit for reporting purposes, ND = Not Detected below indicated detection limit, DF = Dilution Factor



Order #: 927166

Client: GeoEnviro Services, Inc.

Matrix: WATER

Client Sample ID: EX-1

Date Sampled: 08/27/2008

Time Sampled: 10:40

Sampled By:

Analyte	Result	DF	DLR	Units	Date/Analyst
---------	--------	----	-----	-------	--------------

8260B VOC Oxygenates - Low DLR (0.5)

Di-isopropyl ether (DIPE)	ND	1	0.5	ug/L	08/31/08 YL
Ethyl-tertbutylether (ETBE)	ND	1	0.5	ug/L	08/31/08 YL
Tert-amylmethylether (TAME)	ND	1	0.5	ug/L	08/31/08 YL
Tertiary butyl alcohol (TBA)	22	1	5.0	ug/L	08/31/08 YL
Benzene	0.9	1	0.5	ug/L	08/31/08 YL
Ethyl benzene	0.8	1	0.5	ug/L	08/31/08 YL
Methyl-tert-butylether (MTBE)	94	1	0.5	ug/L	08/31/08 YL
Toluene	ND	1	0.5	ug/L	08/31/08 YL
Xylenes, total	ND	1	0.5	ug/L	08/31/08 YL

Surrogates

				Units	Control Limits
Surr1 - Dibromofluoromethane	91			%	70 - 135
Surr2 - 1,2-Dichloroethane-d4	102			%	70 - 135
Surr3 - Toluene-d8	115			%	70 - 135
Surr4 - p-Bromofluorobenzene	111			%	70 - 135

8015B - Gasoline

Gasoline	348	1	50	ug/L	08/29/08 LT
----------	-----	---	----	------	-------------

Surrogates

				Units	Control Limits
p-Bromofluorobenzene (Sur)	109			%	60 - 140

DLR = Detection limit for reporting purposes, ND = Not Detected below indicated detection limit, DF = Dilution Factor



Order #: 927167

Client: GeoEnviro Services, Inc.

Matrix: WATER

Client Sample ID: Laboratory Method Blank

Date Sampled:

Time Sampled:

Sampled By:

Analyte	Result	DF	DLR	Units	Date/Analyst
---------	--------	----	-----	-------	--------------

8260B VOC Oxygenates - Low DLR (0.5)

Di-isopropyl ether (DIPE)	ND	1	0.5	ug/L	08/31/08 YL
Ethyl-tertbutylether (ETBE)	ND	1	0.5	ug/L	08/31/08 YL
Tert-amylmethylether (TAME)	ND	1	0.5	ug/L	08/31/08 YL
Tertiary butyl alcohol (TBA)	ND	1	5.0	ug/L	08/31/08 YL
Benzene	ND	1	0.5	ug/L	08/31/08 YL
Ethyl benzene	ND	1	0.5	ug/L	08/31/08 YL
Methyl-tert-butylether (MTBE)	ND	1	0.5	ug/L	08/31/08 YL
Toluene	ND	1	0.5	ug/L	08/31/08 YL
Xylenes, total	ND	1	0.5	ug/L	08/31/08 YL

Surrogates

				Units	Control Limits
Surr1 - Dibromofluoromethane	73			%	70 - 135
Surr2 - 1,2-Dichloroethane-d4	88			%	70 - 135
Surr3 - Toluene-d8	110			%	70 - 135
Surr4 - p-Bromofluorobenzene	107			%	70 - 135

8015B - Gasoline

Gasoline	ND	1	50	ug/L	08/29/08 LT
----------	----	---	----	------	-------------

Surrogates

				Units	Control Limits
p-Bromofluorobenzene (Sur)	123			%	60 - 140

DLR = Detection limit for reporting purposes, ND = Not Detected below indicated detection limit, DF = Dilution Factor



**ASSOCIATED LABORATORIES
LCS REPORT FORM**

QC Sample: G1-LCS&LCSD

Matrix: WATER

Prep. Date: September 2, 2008

Analysis Date 9/2/08-9/3/08

Lab ID#'s in Batch: 219012,219011,218824,218960,218980,218976,218978,

LAB CONTROLLED SPIKE / LAB CONTROLLED DUPLICATE RESULT

Reporting Units = µg/L

Test	Method	Method Blank	Spike Added	LCS Spike	LCSD Spk. Dup	%Rec LCS	%Rec LCSD	RPD
TPH	8015M-G	ND	500	491	491	98	98	0

ND = Not Detected

LCS Result = Lab Control Sample Result

%REC-LCS & LCSD = Percent Recovery of LCS Spike & LCS Spike Duplicate

RPD = Relative Percent Difference of LCS Spike and LCS Spike Duplicate

%REC LIMITS = 70 - 130
RPD LIMITS = 30

SURROGATE RECOVERY

Sample No.	BFB
QC Limit	60-140
Method Blank	75
LCS	85
LCSD	81

BFB = p-Bromofluorobenzene

**ASSOCIATED LABORATORIES
LCS REPORT FORM**

QC Sample: G1-LCS&LCSD

Matrix: WATER

Prep. Date: September 3, 2008

Analysis Date 9/3/08-9/4/08

Lab ID#'s in Batch: 218947 , 218996 , 218824 , 218976 , 218978 , 219011 , 219085 .

LAB CONTROLLED SPIKE / LAB CONTROLLED DUPLICATE RESULT

Reporting Units = µg/L

Test	Method	Method Blank	Spike Added	LCS Spike	LCSD Spk. Dup	%Rec LCS	%Rec LCSD	RPD
TPH	8015M-G	ND	500	444	452	89	90	2

ND = Not Detected

LCS Result = Lab Control Sample Result

%REC-LCS & LCSD = Percent Recovery of LCS Spike & LCS Spike Duplicate

RPD = Relative Percent Difference of LCS Spike and LCS Spike Duplicate

<i>%REC LIMITS = 70 - 130</i>
<i>RPD LIMITS = 30</i>

SURROGATE RECOVERY

Sample No.	BFB
QC Limit	60-140
Method Blank	66
LCS	94
LCSD	94

BFB = p-Bromofluorobenzene

**ASSOCIATED LABORATORIES
LCS REPORT FORM**

QC Sample: G15-LCS&LCSD

Matrix: WATER

Prep. Date: August 29, 2008

Analysis Date 8/29/08-8/30/08

Lab ID#'s in Batch: 218824, 218976, 218978

LAB CONTROLLED SPIKE / LAB CONTROLLED DUPLICATE RESULT

Reporting Units = µg/L

Test	Method	Method Blank	Spike Added	LCS Spike	LCSD Spk. Dup	%Rec LCS	%Rec LCSD	RPD
TPH	8015M-G	ND	500	513	598	103	120	15

ND = Not Detected

LCS Result = Lab Control Sample Result

%REC-LCS & LCSD = Percent Recovery of LCS Spike & LCS Spike Duplicate

RPD = Relative Percent Difference of LCS Spike and LCS Spike Duplicate

<i>%REC LIMITS = 70 - 130</i>
<i>RPD LIMITS = 30</i>

SURROGATE RECOVERY

Sample No.	BFB
QC Limit	60-140
Method Blank	123
LCS	119
LCSD	121

BFB = p-Bromofluorobenzene

ASSOCIATED LABORATORIES

QA / QC EPA Methods 8260, & 524.2 GCMS # 8

Sample ID: *MS/MSD Water Sample* 218331-505
 Date Prepared: August 30, 2008
 Date Analyzed: August 31, 2008
 Sample Matrix: Water
 Units: µg/L

Lab ID#'s in Batch: 218831, 218976

Compound	Sample Conc.	Spike Added	Spike Res	Dup Res	Spike % Rec	Dup % Rec	RPD	QC RPD	Limits % Rec
1,1-Dichloroethene	0.00	25.0	28.41	28.52	114	114	0	22	59 - 172
MTBE	0.00	25.0	28.72	29.46	115	118	3	24	62 - 137
Benzene	30.67	25.0	52.68	52.26	88	86	1	24	62 - 137
Trichloroethene	0.00	25.0	22.35	21.19	89	85	5	21	66 - 142
Toluene	0.00	25.0	30.14	28.27	121	113	6	21	59 - 139
Chlorobenzene	0.00	25.0	25.35	23.73	101	95	7	21	60 - 133

Sample ID: *LCS*
 August 30, 2008 10:53 PM

Compound	Spike Added	Spike Res	Spike % Rec	Limits % Rec
1,1-Dichloroethene	25.0	30.22	121	59 - 172
MTBE	25.0	28.15	113	62 - 137
Benzene	25.0	26.35	105	62 - 137
Trichloroethene	25.0	23.61	94	66 - 142
Toluene	25.0	26.74	107	59 - 139
Chlorobenzene	25.0	26.47	106	60 - 133

*=Outside QC limits due to high concentration in sample
 If Sample Result > 4 times Spike Added, then "NC"

Surrogate Recovery

Compound	MB 1 % Rec	MB 2 % Rec	MS % Rec	MSD % Rec	LCS % Rec	Limits % Rec
Dibromofluoromethane	73	73	100	107	101	70 - 135
1,2-Dichloroethane-d4	89	88	90	95	93	70 - 135
Toluene-d8	102	110	99	95	101	70 - 135
p-Bromofluorobenzene	100	107	107	100	98	70 - 135

ASSOCIATED LABORATORIES

QA / QC EPA Methods 8260, & 524.2 GCMS # 8

Sample ID: *MS/MSD Water Sample* 218972-148
 Date Prepared: September 2, 2008
 Date Analyzed: September 3, 2008
 Sample Matrix: Water
 Units: µg/L

Lab ID#'s in Batch: 218831, 218976, 218840, 218939, 218938, 218973, 218972, 218996, 218978, 218980, 218605

Compound	Sample Conc.	Spike Added	Spike Res	Dup Res	Spike % Rec	Dup % Rec	RPD	QC RPD	Limits % Rec
1,1-Dichloroethene	0.00	25.0	26.58	26.32	106	105	1	22	59 - 172
MTBE	0.00	25.0	28.34	28.32	113	113	0	24	62 - 137
Benzene	0.00	25.0	24.76	24.71	99	99	0	24	62 - 137
Trichloroethene	0.00	25.0	23.73	24.35	95	97	3	21	66 - 142
Toluene	0.00	25.0	25.38	26.27	102	105	3	21	59 - 139
Chlorobenzene	0.00	25.0	26.17	26.37	105	105	1	21	60 - 133

Sample ID: *LCS*
 September 2, 2008 6:59 PM

Compound	Spike Added	Spike Res	Spike % Rec	Limits % Rec
1,1-Dichloroethene	25.0	28.30	113	59 - 172
MTBE	25.0	30.04	120	62 - 137
Benzene	25.0	26.33	105	62 - 137
Trichloroethene	25.0	26.11	104	66 - 142
Toluene	25.0	27.28	109	59 - 139
Chlorobenzene	25.0	27.70	111	60 - 133

*=Outside QC limits due to high concentration in sample
 If Sample Result > 4 times Spike Added, then "NC"

Surrogate Recovery

Compound	MB 1 % Rec	MB 2 % Rec	MS % Rec	MSD % Rec	LCS % Rec	Limits % Rec
Dibromofluoromethane	74	74	94	97	98	70 - 135
1,2-Dichloroethane-d4	97	100	94	99	92	70 - 135
Toluene-d8	106	119	100	105	103	70 - 135
p-Bromofluorobenzene	120	120	113	107	111	70 - 135



ASSOCIATED LABORATORIES

806 North Batavia - Orange, California 92868 - 714-771-6900

FAX 714-538-1209

SAMPLE ACCEPTANCE CHECKLIST

Section 1
 Client: 610 Buivo Project: _____
 Date Received: 8-29-08
 Sample(s) received in cooler: Yes No (Skip Section 2)

Section 2
 Was the cooler packed with: Ice Ice Packs Bubble Wrap Styrofoam
 Paper None Other _____
 Cooler or box temperature: 2.1°C
 (Acceptance range is 2 to 6 Deg. C.)

Section 3

	YES	NO	N/A
Was a COC received?	<input checked="" type="checkbox"/>	<input type="checkbox"/>	<input type="checkbox"/>
Were custody seals present?	<input type="checkbox"/>	<input type="checkbox"/>	<input checked="" type="checkbox"/>
If Yes - were they intact?	<input type="checkbox"/>	<input type="checkbox"/>	<input type="checkbox"/>
Were all samples sealed in plastic bags?	<input checked="" type="checkbox"/>	<input type="checkbox"/>	<input type="checkbox"/>
Did all samples arrive intact? If no, indicate below.	<input checked="" type="checkbox"/>	<input type="checkbox"/>	<input type="checkbox"/>
Did all bottle labels agree with COC? (ID, dates and times)	<input checked="" type="checkbox"/>	<input type="checkbox"/>	<input type="checkbox"/>
Were correct containers used for the tests required?	<input checked="" type="checkbox"/>	<input type="checkbox"/>	<input type="checkbox"/>
Was a sufficient amount of sample sent for tests indicated?	<input checked="" type="checkbox"/>	<input type="checkbox"/>	<input type="checkbox"/>
Was there head space in VOA vials?	<input type="checkbox"/>	<input checked="" type="checkbox"/>	<input type="checkbox"/>
Were the correct preservatives used?	<input type="checkbox"/>	<input type="checkbox"/>	<input checked="" type="checkbox"/>
Were the samples scanned for presence of radioactivity?	<input type="checkbox"/>	<input type="checkbox"/>	<input checked="" type="checkbox"/>
Was total residual chlorine measured (Fish Bioassay samples only)? *	<input type="checkbox"/>	<input type="checkbox"/>	<input checked="" type="checkbox"/>

*: If the answer is no, please inform Fish Bioassay Dept. immediately.

Section 4
 Explanations/Comments

Section 5
 Was Project Manager notified of discrepancies: Y / N N/A

Completed By: [Signature] Date: 8-28-08

**ATTACHMENT D
GEOTRACKER CONFIRMATION RECEIPTS**

STATE WATER RESOURCES CONTROL BOARD
GEOTRACKER ESI

UPLOADING A EDF FILE

SUCCESS

Processing is complete. No errors were found!
Your file has been successfully submitted!

Submittal Type:	GWM_R
Submittal Title:	3Q08 GWM Report
Facility Global ID:	T0600100483
Facility Name:	EZ SERVE #100877
File Name:	218976.zip
Organization Name:	Schaaf
Username:	SCHAAF
IP Address:	76.194.67.163
Submittal Date/Time:	10/3/2008 7:57:38 AM
Confirmation Number:	4804672718

[VIEW QC REPORT](#)

[VIEW DETECTIONS REPORT](#)

Copyright © 2008 State of California

STATE WATER RESOURCES CONTROL BOARD
GEOTRACKER ESI

UPLOADING A GEO_WELL FILE

SUCCESS

Processing is complete. No errors were found!
Your file has been successfully submitted!

<u>Submittal Type:</u>	GEO_WELL
<u>Submittal Title:</u>	3Q08 GWM Report
<u>Facility Global ID:</u>	T0600100483
<u>Facility Name:</u>	EZ SERVE #100877
<u>File Name:</u>	geo_well.zip
<u>Organization Name:</u>	Schaaf
<u>Username:</u>	SCHAAF
<u>IP Address:</u>	76.194.67.163
<u>Submittal Date/Time:</u>	10/3/2008 7:56:44 AM
<u>Confirmation Number:</u>	7936388313

Copyright © 2008 State of California

STATE WATER RESOURCES CONTROL BOARD
GEOTRACKER ESI

UPLOADING A GEO_REPORT FILE

SUCCESS

Your GEO_REPORT file has been successfully submitted!

<u>Submittal Type:</u>	GEO_REPORT
<u>Report Title:</u>	Groundwater Monitoring Report, Third Quarter 2008
<u>Report Type:</u>	Monitoring Report - Quarterly
<u>Report Date:</u>	10/15/2008
<u>Facility Global ID:</u>	T0600100483
<u>Facility Name:</u>	EZ SERVE #100877
<u>File Name:</u>	3Q08 GWM EZ 100877, 525 W. A St., Hayward, October 15, 2008.pdf
<u>Organization Name:</u>	Schaaf
<u>Username:</u>	SCHAAF
<u>IP Address:</u>	75.22.94.45
<u>Submittal Date/Time:</u>	8/27/2010 3:26:19 PM
<u>Confirmation Number:</u>	2359231412

Copyright © 2008 State of California