



R023
NCW

www.deltaenv.com

Solving environment-related business problems worldwide

3164 Gold Camp Drive • Suite 200
Rancho Cordova, California 95670 USA
916.638 2085 800 477.7411
Fax 916 638.8385

Alameda County
FEB 09 2005
Environmental Health

Alameda County

February 3, 2004

Mr. Amir Gholami
Department of Environmental Health
1131 Harbor Bay Park Way
Alameda, CA 94502

Re: Case Number # 3580
Quarterly Groundwater Monitoring Report Third Quarter 2004
Former RPMS (E-Z Serve) Location 100877
525 West A Street
Hayward, California
Delta Project RPMS0-877

Dear Mr. Gholami:

Delta Environmental Consultants, Inc. (Delta) is pleased to submit this Quarterly Groundwater Monitoring Report. This report presents groundwater monitoring results for the subject site and recommends future work.

If you have any questions regarding this report please contact me at (916) 638-2765.

Sincerely,

DELTA ENVIRONMENTAL CONSULTANTS, INC.

James R. Brownell
California Registered Geologist No. 5078

Enc: Quarterly Groundwater Monitoring Report

cc: Jack Ceccarelli, RPMS of CA

**QUARTERLY GROUNDWATER MONITORING REPORT
THIRD QUARTER 2004**

Former RPMS (E-Z Serve) Location 100877
525 West A Street
Hayward, California

Case Number # 3580
Delta Project RPMS0-877

December 7, 2004

Prepared for:

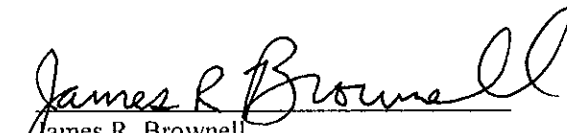
Jack Ceccarelli
Restructure Petroleum Marketing Services of California
205 S. Hoover Boulevard, Suite 101
Tampa, Florida 33609-9905

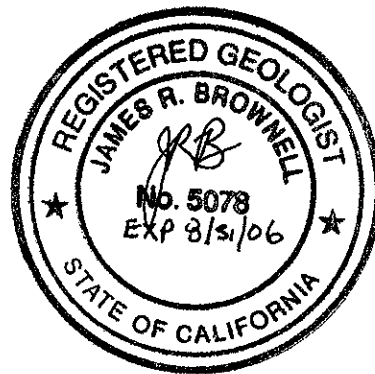
Submitted to:

Amir Gholami
Alameda County
Department of Environmental Health
1131 Harbor Bay Park Way
Alameda, CA 94502

Alameda County
FEB 09 2005
Environmental Health

Reviewed by:


James R. Brownell
California Registered Geologist No. 5078



Delta Environmental Consultants, Inc.

TABLE OF CONTENTS

1.0	INTRODUCTION	1
1.1	Purpose	1
1.2	Scope of Services.....	1
1.3	Site Location	1
2.0	GROUNDWATER MONITORING DATA	2
2.1	Groundwater Gauging and Sampling.....	2
2.2	Analytical Data	2
3.0	CONCLUSIONS AND RECOMMENDATIONS	4
3.1	Conclusions.....	4
3.2	Recommendations.....	4
4.0	REMARKS	5

List of Tables

Table 1	Groundwater Data Summary
---------	--------------------------

List of Figures

Figure 1	Site Location Map
Figure 2	Groundwater Contour Map
Figure 3	Groundwater Analytical Data

List of Appendices

Appendix A	Field Methods and Procedures
Appendix B	Groundwater Laboratory Analytical Data and Graphs

QUARTERLY GROUNDWATER MONITORING REPORT
THIRD QUARTER 2004

FORMER RPMS (E-Z SERVE) LOCATION 100877
525 WEST A STREET
HAYWARD, CALIFORNIA

1.0 INTRODUCTION

1.1 Purpose

The purpose of this Quarterly Groundwater Monitoring Report (QGMR) is to present the groundwater monitoring results completed by Delta Environmental Consultants, Inc. (Delta) at former RPMS (E-Z Serve) Location 100877 located at 525 West A Street in Hayward, California.

1.2 Scope of Services

The scope of services provided by Delta on the project consisted of the following:

- Gauged groundwater monitoring wells.
- Sampled groundwater monitoring wells.
- Analyzed groundwater samples for selected hydrocarbon constituents.
- Prepared this Quarterly Groundwater Monitoring Report.

1.3 Site Location

The site is a former E-Z Serve convenience store and retail gasoline station located at 525 West A Street in Hayward, California. The site is located in an area of commercial and residential properties.

2.0 GROUNDWATER MONITORING DATA

2.1 Groundwater Gauging and Sampling

Delta subcontracted Doulos Environmental, Inc. (Doulos) to perform groundwater monitoring activities at this site. On October 25, 2004, Doulos personnel mobilized to the site to conduct groundwater monitoring activities. Prior to purging, the monitoring wells were gauged for liquid phase hydrocarbons (LPH) and depth to water utilizing an oil water interface probe. Groundwater ranged from 15.99 feet to 17.53 feet below top of casing. No LPH was detected in any of the monitoring wells during the October 25, 2004 gauging activities. Monitoring wells MW-7, MW-12, MW-13 and MW-14 were not gauged or sampled during the October 25, 2004 gauging event due to being unable to locate the monitoring wells. Depths to groundwater and groundwater elevations are presented in Table 1, Groundwater Analytical Data.

Prior to sampling, the monitoring wells were purged utilizing a submersible pump by removing approximately three well volumes of water. Once the wells had been purged, they were sampled utilizing disposable polyurethane bailers. The groundwater samples collected were decanted into properly labeled, laboratory prepared sample containers and placed on ice for storage prior to transporting to the laboratory. The samples were transported, under strict chain-of-custody protocols, to *Kiff Analytical LLC of Davis, California*, for analysis for benzene, toluene, ethyl-benzene, total xylenes (BTEX), total petroleum hydrocarbons (TPH) in the gasoline range, methyl tert butyl ether (MTBE), diisopropyl ether (DIPE), ethyl tert butyl ether (ETBE), tert-amyl methyl ether (TAME) and tert butyl alcohol (TBA) by EPA Method 8260B.

2.2 Analytical Data

Reported analytical data for the groundwater samples collected on October 25, 2004 indicate that reported benzene concentrations have decreased in monitoring wells MW-1, MW-1A, MW-2, MW-3, MW-4, MW-5, MW-6 and EX-1. Benzene concentrations ranged from 0.60 µg/L in monitoring well MW-3 to 260 µg/L in monitoring well MW-1. Reported MTBE concentrations have remained the below laboratory detection limits (BDL) in monitoring wells MW-1A and MW-3, have decreased in monitoring wells MW-1, MW-2, MW-4 and EX-1, and have increased in monitoring wells MW-5 and MW-6. MTBE concentrations ranged from BDL in monitoring wells MW-1A and MW-3 to 14 µg/L in monitoring well MW-1.

The analytical data for the October 25, 2004 sampling event is presented in Table 1, Groundwater Analytical Data. Field methods and procedures are presented in Appendix A. Laboratory analytical results, chain-of-custody documentation and graphs are presented in Appendix B.

3.0 CONCLUSIONS AND RECOMMENDATIONS

3.1 Conclusions

Reported analytical data for the groundwater samples collected on October 25, 2004 indicate that reported benzene concentrations have decreased in monitoring wells MW-1, MW-1A, MW-2, MW-3, MW-4, MW-5, MW-6 and EX-1. Benzene concentrations ranged from 0.60 µg/L in monitoring well MW-3 to 260 µg/L in monitoring well MW-1. Reported MTBE concentrations have remained the below laboratory detection limits (BDL) in monitoring wells MW-1A and MW-3, have decreased in monitoring wells MW-1, MW-2, MW-4 and EX-1, and have increased in monitoring wells MW-5 and MW-6. MTBE concentrations ranged from BDL in monitoring wells MW-1A and MW-3 to 14 µg/L in monitoring well MW-1.

3.2 Recommendations

Delta recommends continued quarterly groundwater monitoring and sampling. Delta also recommends attempting to locate well heads of monitoring wells MW-8 through MW-11 utilizing an electromagnetic subsurface survey.

4.0 REMARKS

The recommendations contained in this report represent Delta's professional opinions based upon the currently available information and are arrived at in accordance with currently acceptable professional standards. This report is based upon a specific scope of work requested by the client. The Contract between Delta and its client outlines the scope of work, and only those tasks specifically authorized by that contract or outlined in this report were performed. This report is intended only for the use of Delta's Client and anyone else specifically listed on this report. Delta will not and cannot be liable for unauthorized reliance by any other third party. Other than as contained in this paragraph, Delta makes no express or implied warranty as to the contents of this report.

This report was prepared by **DELTA ENVIRONMENTAL CONSULTANTS, INC.**

Table 1
Groundwater Analytical Data
Former EZ Serve Location #100877
Delta Project No. RPMS-877-A

Well	Sample Collection Date	Casing Elevation (msl)	Depth to Water (feet)	Depth to Product (feet)	Water Table Elevation (msl)	TPHg (µg/L)	Benzene (µg/L)	Toluene (µg/L)	Ethyl- benzene (µg/L)	Total Xylenes (µg/L)	MTBE (µg/L)	DIPE (µg/L)	ETBE (µg/L)	TBA (µg/L)	TAME (µg/L)
MW-1	9/11/1992	41.75	20.08	0.00	21.67	48000.00	9000.00	1200.00	1800.00	4600.00	--	--	--	--	--
MW-1	12/22/1992	41.75	19.79	0.00	21.96	84000.00	22000.00	1600.00	4800.00	17000.00	--	--	--	--	--
MW-1	3/3/1993	41.75	16.23	0.00	25.52	54000.00	16000.00	1600.00	1900.00	4300.00	--	--	--	--	--
MW-1	6/23/1993	41.75	16.86	0.00	24.89	30000.00	18000.00	1100.00	1400.00	3700.00	--	--	--	--	--
MW-1	9/30/1993	41.75	18.04	0.00	23.71	33000.00	10000.00	440.00	940.00	1700.00	--	--	--	--	--
MW-1	2/6/1994	41.75	18.15	0.00	23.60	64000.00	18000.00	1600.00	4700.00	12000.00	--	--	--	--	--
MW-1	5/2/1994	41.75	17.26	0.00	24.49	7200.00	2100.00	29.00	490.00	520.00	--	--	--	--	--
MW-1	7/1/1994	41.75	17.60	0.00	24.15	13000.00	3700.00	150.00	550.00	12000.00	--	--	--	--	--
MW-1	9/20/1994	41.75	20.59	0.00	21.16	10000.00	3100.00	75.00	440.00	870.00	--	--	--	--	--
MW-1	12/5/1994	41.75	17.83	0.00	23.92	8700.00	3700.00	87.00	520.00	950.00	--	--	--	--	--
MW-1	3/10/1995	41.75	14.67	0.00	27.08	--	--	--	--	--	--	--	--	--	--
MW-1	3/15/1995	41.75	14.43	0.00	27.32	290.00	56.00	2.00	12.00	47.00	--	--	--	--	--
MW-1	9/23/1996	41.75	14.92	0.00	26.83	20000.00	5200.00	860.00	700.00	1100.00	270.00	--	--	--	--
MW-1	12/4/1996	41.75	15.61	0.00	26.14	17000.00	3100.00	64.00	610.00	1200.00	280.00	--	--	--	--
MW-1	4/8/1997	41.75	13.25	0.00	28.50	2100.00	430.00	15.00	52.00	85.00	100.00	--	--	--	--
MW-1	6/30/1997	41.75	14.68	0.00	27.07	10000.00	2100.00	<	<	320.00	<	--	--	--	--
MW-1	11/25/1997	41.75	15.99	0.00	25.76	16000.00	2100.00	23.00	76.00	240.00	<	--	--	--	--
MW-1	6/1/1998	41.75	9.98	0.00	31.77	19000.00	6100.00	430.00	1100.00	2300.00	420.00	--	--	--	--
MW-1	6/14/2001	41.75	15.05	0.00	26.70	6000.00	380.00	8.40	260.00	180.00	<25	--	--	--	--
MW-1	11/7/2001	41.75	16.31	0.00	25.44	12000.00	1000.00	30.00	1000.00	740.00	11.00	<5.0	<5.0	<50	<5.0
MW-1	1/30/2002	41.75	14.15	0.00	27.60	8800.00	690.00	16.00	480.00	270.00	14.00	<5.0	<5.0	<50	<5.0
MW-1	5/29/2002	41.75	14.55	0.00	27.20	6400.00	330.00	13.00	250.00	260.00	12.00	2.50	<2.0	<20	<2.0
MW-1	8/14/2002	41.75	15.56	0.00	26.19	5500.00	470.00	14.00	360.00	160.00	10.00	<10	<10	<100	<10
MW-1	11/15/2002	41.75	16.10	0.00	25.65	10000.00	440.00	16.00	310.00	150.00	15.00	<10	<10	<100	<10
MW-1	10/25/2004	41.75	15.99	0.00	25.76	4300.00	260.00	3.30	150.00	32.00	14.00	<0.90	<0.90	5.80	<0.90

Table 1
Groundwater Analytical Data
Former EZ Serve Location #100877
Delta Project No. RPMS-877-A

Well	Sample Collection Date	Casing Elevation (msl)	Depth to Water (feet)	Depth to Product (feet)	Water Table Elevation (msl)	TPHg (µg/L)	Benzene (µg/L)	Toluene (µg/L)	Ethyl-benzene (µg/L)	Total Xylenes (µg/L)	MTBE (µg/L)	DIPE (µg/L)	ETBE (µg/L)	TBA (µg/L)	TAME (µg/L)
MW-1A	6/23/1993	43.40	17.80	17.59	25.75	--	--	--	--	--	--	--	--	--	--
MW-1A	9/30/1993	43.40	--	--	--	--	--	--	--	--	--	--	--	--	--
MW-1A	2/6/1994	43.40	18.89	0.00	24.51	8900.00	1700.00	42.00	1000.00	400.00	--	--	--	--	--
MW-1A	5/2/1994	43.40	18.35	0.09	25.05	--	--	--	--	--	--	--	--	--	--
MW-1A	7/1/1994	43.40	18.45	0.00	24.95	12000.00	1100.00	<1	920.00	1100.00	--	--	--	--	--
MW-1A	9/20/1994	43.40	21.72	21.50	21.84	--	--	--	--	--	--	--	--	--	--
MW-1A	12/5/1994	43.40	18.87	18.80	24.58	--	--	--	--	--	--	--	--	--	--
MW-1A	3/10/1995	43.40	15.83	0.00	27.57	--	--	--	--	--	--	--	--	--	--
MW-1A	3/15/1995	43.40	15.55	15.50	27.89	--	--	--	--	--	--	--	--	--	--
MW-1A	9/23/1996	43.40	16.00	15.99	27.41	--	--	--	--	--	--	--	--	--	--
MW-1A	12/4/1996	43.40	16.55	0.00	26.85	52000.00	420.00	140.00	1000.00	3500.00	130.00	--	--	--	--
MW-1A	4/8/1997	43.40	14.15	SHEEN	29.25	--	--	--	--	--	--	--	--	--	--
MW-1A	6/30/1997	43.40	15.57	0.00	27.83	17000.00	180.00	<	140.00	1100.00	<	--	--	--	--
MW-1A	11/25/1997	43.40	16.91	0.00	26.49	19000.00	110.00	37.00	290.00	910.00	<	--	--	--	--
MW-1A	6/1/1998	43.40	10.78	0.00	32.62	18000.00	200.00	17.00	230.00	820.00	91.00	--	--	--	--
MW-1A	6/14/2001	43.40	15.93	15.92	27.48	27000.00	29.00	<5.0	620.00	520.00	<50	--	--	--	--
MW-1A	11/7/2001	43.40	17.32	0.00	26.08	21000.00	51.00	<5.0	700.00	510.00	<5.0	<5.0	<5.0	<50	<5.0
MW-1A	1/30/2002	43.40	15.05	0.00	28.35	24000.00	22.00	<5.0	390.00	330.00	<5.0	<5.0	<5.0	<50	<5.0
MW-1A	5/29/2002	43.40	15.49	0.00	27.91	12000.00	32.00	<5.0	550.00	270.00	<5.0	<5.0	<5.0	<50	<5.0
MW-1A	8/14/2002	43.40	16.50	0.00	26.90	14000.00	22.00	<2.0	510.00	240.00	<2.0	<2.0	<2.0	<20	<2.0
MW-1A	11/15/2002	43.40	17.04	0.00	26.36	17000.00	59.00	2.40	630.00	250.00	<2.0	<2.0	<2.0	<20	<2.0
MW-1A	10/25/2004	43.40	16.90	0.00	26.50	2200.00	1.30	<0.50	58.00	3.70	<0.50	<0.50	<0.50	<5.0	<0.50

Table 1
Groundwater Analytical Data
Former EZ Serve Location #100877
Delta Project No. RPMS-877-A

Well	Sample Collection Date	Casing Elevation (msl)	Depth to Water (feet)	Depth to Product (feet)	Water Table Elevation (msl)	TPHg (µg/L)	Benzene (µg/L)	Toluene (µg/L)	Ethyl-benzene (µg/L)	Total Xylenes (µg/L)	MTBE (µg/L)	DIPE (µg/L)	ETBE (µg/L)	TBA (µg/L)	TAME (µg/L)
MW-2	2/5/1992	43.26	22.35	0.00	20.91	67000.00	13000.00	4700.00	820.00	1300.00	--	--	--	--	--
MW-2	9/11/1992	43.26	21.67	0.00	21.59	57000.00	9000.00	1400.00	1200.00	8400.00	--	--	--	--	--
MW-2	12/22/1992	43.26	21.39	0.00	21.87	31000.00	9900.00	350.00	2000.00	4100.00	--	--	--	--	--
MW-2	3/3/1993	43.26	17.75	0.00	25.51	17000.00	5100.00	1300.00	720.00	1900.00	--	--	--	--	--
MW-2	6/23/1993	43.26	18.42	0.00	24.84	60000.00	23000.00	1500.00	4500.00	17000.00	--	--	--	--	--
MW-2	9/30/1993	43.26	19.63	0.00	23.63	38000.00	12000.00	780.00	1500.00	6500.00	--	--	--	--	--
MW-2	2/6/1994	43.26	19.61	0.00	23.65	34000.00	8900.00	450.00	2000.00	5500.00	--	--	--	--	--
MW-2	5/2/1994	43.26	19.84	0.00	23.42	18000.00	3800.00	260.00	1100.00	3500.00	--	--	--	--	--
MW-2	7/1/1994	43.26	19.18	0.00	24.08	18000.00	3700.00	510.00	870.00	2600.00	--	--	--	--	--
MW-2	9/20/1994	43.26	22.17	0.00	21.09	19000.00	4500.00	300.00	1200.00	4000.00	--	--	--	--	--
MW-2	12/6/1994	43.26	19.37	0.00	23.89	22000.00	4700.00	340.00	1400.00	4500.00	--	--	--	--	--
MW-2	3/10/1995	43.26	16.33	0.00	26.93	--	--	--	--	--	--	--	--	--	--
MW-2	3/15/1995	43.26	16.89	0.00	26.37	29000.00	5600.00	350.00	1900.00	6300.00	--	--	--	--	--
MW-2	9/23/1996	43.26	16.61	0.00	26.65	29000.00	3700.00	150.00	1000.00	4300.00	860.00	--	--	--	--
MW-2	12/4/1996	43.26	17.19	0.00	26.07	31000.00	3800.00	140.00	2000.00	5100.00	690.00	--	--	--	--
MW-2	4/8/1997	43.26	14.86	0.00	28.40	20000.00	2500.00	80.00	1300.00	3400.00	880.00	--	--	--	--
MW-2	6/30/1997	43.26	16.28	0.00	26.98	41000.00	2700.00	130.00	1200.00	4000.00	890.00	--	--	--	--
MW-2	11/25/1997	43.26	17.56	0.00	25.70	51000.00	2900.00	140.00	1800.00	7000.00	1200.00	--	--	--	--
MW-2	6/1/1998	43.26	11.58	0.00	31.68	33000.00	2700.00	130.00	1800.00	5700.00	610.00	--	--	--	--
MW-2	6/14/2001	43.26	16.63	0.00	26.63	18000.00	860.00	14.00	1100.00	2200.00	<100	--	--	--	--
MW-2	11/7/2001	43.26	17.85	0.00	25.41	20000.00	880.00	20.00	1100.00	2600.00	21.00	<5.0	<5.0	<50	<5.0
MW-2	1/30/2002	43.26	15.65	0.00	27.61	19000.00	880.00	19.00	1100.00	2400.00	56.00	<5.0	<5.0	<50	<5.0
MW-2	5/29/2002	43.26	16.12	0.00	27.14	8100.00	390.00	16.00	560.00	1400.00	32.00	<5.0	<5.0	<50	<5.0
MW-2	8/14/2002	43.26	17.20	0.00	26.06	19000.00	820.00	21.00	1200.00	2600.00	29.00	<20	<20	<200	<20
MW-2	11/15/2002	43.26	17.63	0.00	25.63	34000.00	910.00	31.00	1000.00	1400.00	39.00	<20	<20	<200	<20
MW-2	10/25/2004	43.26	17.53	0.00	25.73	9300.00	280.00	3.80	500.00	980.00	8.20	<2.0	<2.0	<9.0	<2.0

Table 1
Groundwater Analytical Data
Former EZ Serve Location #100877
Delta Project No. RPMS-877-A

Well	Sample Collection Date	Casing Elevation (msl)	Depth to Water (feet)	Depth to Product (feet)	Water Table Elevation (msl)	TPHg (µg/L)	Benzene (µg/L)	Toluene (µg/L)	Ethyl-benzene (µg/L)	Total Xylenes (µg/L)	MTBE (µg/L)	DIPE (µg/L)	ETBE (µg/L)	TBA (µg/L)	TAME (µg/L)
MW-3	2/5/1992	43.89	21.85	0.00	22.04	16000.00	2700.00	410.00	<1	3400.00	--	--	--	--	--
MW-3	9/11/1992	43.89	21.13	0.00	22.76	43000.00	7600.00	1600.00	1400.00	4100.00	--	--	--	--	--
MW-3	12/22/1992	43.89	20.88	0.00	23.01	29000.00	8800.00	1200.00	1500.00	3700.00	--	--	--	--	--
MW-3	3/3/1993	43.89	17.29	0.00	26.60	17000.00	5000.00	1500.00	680.00	1700.00	--	--	--	--	--
MW-3	6/23/1993	43.89	17.88	0.00	26.01	5700.00	3000.00	120.00	560.00	790.00	--	--	--	--	--
MW-3	9/30/1993	43.89	19.18	0.00	24.71	21000.00	7000.00	2100.00	970.00	2600.00	--	--	--	--	--
MW-3	2/6/1994	43.89	19.21	0.00	24.68	24000.00	7200.00	1600.00	990.00	3200.00	--	--	--	--	--
MW-3	5/2/1994	43.89	18.30	0.00	25.59	10000.00	2200.00	440.00	470.00	1200.00	--	--	--	--	--
MW-3	7/1/1994	43.89	18.63	0.00	25.26	8200.00	2000.00	370.00	350.00	930.00	--	--	--	--	--
MW-3	9/20/1994	43.89	21.64	0.00	22.25	7200.00	2000.00	360.00	380.00	1000.00	--	--	--	--	--
MW-3	12/6/1994	43.89	19.15	0.00	24.74	9000.00	2300.00	400.00	440.00	1100.00	--	--	--	--	--
MW-3	3/10/1995	43.89	16.33	0.00	27.56	--	--	--	--	--	--	--	--	--	--
MW-3	3/15/1995	43.89	16.89	0.00	27.00	4300.00	980.00	47.00	370.00	780.00	--	--	--	--	--
MW-3	9/23/1996	43.89	16.11	0.00	27.78	10000.00	950.00	20.00	700.00	780.00	80.00	--	--	--	--
MW-3	12/4/1996	43.89	16.63	0.00	27.26	13000.00	1100.00	25.00	1000.00	1100.00	67.00	--	--	--	--
MW-3	4/8/1997	43.89	14.25	0.00	29.64	3800.00	210.00	4.60	270.00	280.00	56.00	--	--	--	--
MW-3	6/30/1997	43.89	15.70	0.00	28.19	3500.00	280.00	<	32.00	180.00	<	--	--	--	--
MW-3	11/25/1997	43.89	16.99	0.00	26.90	6800.00	230.00	<	370.00	290.00	130.00	--	--	--	--
MW-3	6/1/1998	43.89	--	--	--	--	--	--	--	--	--	--	--	--	--
MW-3	6/14/2001	43.89	16.02	0.00	27.87	2100.00	9.00	<0.5	78.00	43.00	<5.0	--	--	--	--
MW-3	11/7/2001	43.89	17.33	0.00	26.56	7700.00	75.00	<5.0	410.00	150.00	<5.0	<5.0	<5.0	<50	<5.0
MW-3	1/30/2002	43.89	15.10	0.00	28.79	3600.00	27.00	<5.0	120.00	34.00	<5.0	<5.0	<5.0	<50	<5.0
MW-3	5/29/2002	43.89	15.63	0.00	28.26	2000.00	18.00	<5.0	53.00	13.00	<5.0	<5.0	<5.0	<50	<5.0
MW-3	8/14/2002	43.89	16.63	0.00	27.26	2400.00	19.00	<0.5	50.00	6.50	<0.5	<0.5	<0.5	<5.0	<0.5
MW-3	11/15/2002	43.89	17.10	0.00	26.79	4300.00	7.50	<0.5	22.00	1.10	0.50	<0.5	<0.5	<5.0	<0.5
MW-3	10/25/2004	43.89	17.01	0.00	26.88	460.00	0.60	<0.50	9.60	1.70	<0.50	<0.50	<0.50	<5.0	<0.50

Table 1
Groundwater Analytical Data
Former EZ Serve Location #100877
Delta Project No. RPMS-877-A

Well	Sample Collection Date	Casing Elevation (msl)	Depth to Water (feet)	Depth to Product (feet)	Water Table Elevation (msl)	TPHg (µg/L)	Benzene (µg/L)	Toluene (µg/L)	Ethyl-benzene (µg/L)	Total Xylenes (µg/L)	MTBE (µg/L)	DIPE (µg/L)	ETBE (µg/L)	TBA (µg/L)	TAME (µg/L)
MW-4	2/5/1992	42.76	21.31	0.00	21.45	16000.00	2700.00	410.00	<1	3400.00	--	--	--	--	--
MW-4	9/11/1992	42.76	20.62	0.00	22.14	43000.00	7600.00	1600.00	1400.00	4100.00	--	--	--	--	--
MW-4	12/22/1992	42.76	20.37	0.00	22.39	29000.00	8800.00	1200.00	1500.00	3700.00	--	--	--	--	--
MW-4	3/3/1993	42.76	16.78	0.00	25.98	17000.00	5000.00	1500.00	680.00	1700.00	--	--	--	--	--
MW-4	6/23/1993	42.76	17.45	0.00	25.31	5700.00	3000.00	120.00	560.00	790.00	--	--	--	--	--
MW-4	9/30/1993	42.76	18.64	0.00	24.12	21000.00	7000.00	2100.00	970.00	2600.00	--	--	--	--	--
MW-4	2/6/1994	42.76	18.59	0.00	24.17	24000.00	7200.00	1600.00	990.00	3200.00	--	--	--	--	--
MW-4	5/2/1994	42.76	17.81	0.00	24.95	10000.00	2200.00	440.00	470.00	1200.00	--	--	--	--	--
MW-4	7/1/1994	42.76	18.13	0.00	24.63	8200.00	2000.00	370.00	350.00	930.00	--	--	--	--	--
MW-4	9/20/1994	42.76	21.13	0.00	21.63	7200.00	2000.00	360.00	380.00	1000.00	--	--	--	--	--
MW-4	12/6/1994	42.76	18.36	0.00	24.40	9000.00	2300.00	400.00	440.00	1100.00	--	--	--	--	--
MW-4	3/10/1995	42.76	15.25	0.00	27.51	--	--	--	--	--	--	--	--	--	--
MW-4	3/15/1995	42.76	14.89	0.00	27.87	15000.00	4400.00	600.00	770.00	2660.00	--	--	--	--	--
MW-4	9/23/1996	42.76	15.56	0.00	27.20	32000.00	7400.00	540.00	1500.00	2800.00	2100.00	--	--	--	--
MW-4	12/4/1996	42.76	16.11	0.00	26.65	23000.00	7800.00	140.00	1200.00	1200.00	1900.00	--	--	--	--
MW-4	4/8/1997	42.76	13.73	0.00	29.03	16000.00	3900.00	680.00	850.00	2300.00	980.00	--	--	--	--
MW-4	6/30/1997	42.76	15.19	0.00	27.57	63000.00	7000.00	430.00	1400.00	4400.00	1700.00	--	--	--	--
MW-4	11/25/1997	42.76	16.49	0.00	26.27	30000.00	4300.00	61.00	810.00	1500.00	880.00	--	--	--	--
MW-4	6/1/1998	42.76	10.42	0.00	32.34	33000.00	5700.00	710.00	1700.00	2900.00	720.00	--	--	--	--
MW-4	6/14/2001	42.76	15.55	0.00	27.21	9500.00	690.00	45.00	560.00	600.00	<50	--	--	--	--
MW-4	11/7/2001	42.76	16.81	0.00	25.95	6000.00	710.00	20.00	630.00	190.00	27.00	<5.0	<5.0	<50	<5.0
MW-4	1/30/2002	42.76	14.60	0.00	28.16	4800.00	830.00	16.00	600.00	61.00	42.00	<5.0	<5.0	<50	<5.0
MW-4	5/29/2002	42.76	15.14	0.00	27.62	5300.00	720.00	57.00	600.00	200.00	35.00	<20	<20	<200	<20
MW-4	8/14/2002	42.76	16.07	0.00	26.69	5000.00	640.00	15.00	550.00	35.00	28.00	<2.0	<2.0	<20	<2.0
MW-4	11/15/2002	42.76	16.61	0.00	26.15	3700.00	330.00	10.00	260.00	200.00	20.00	<2.0	<2.0	<20	<2.0
MW-4	10/25/2004	42.76	16.50	0.00	26.26	4000.00	180.00	15.00	200.00	190.00	4.10	<0.50	<0.50	<5.0	<0.50

Table 1
Groundwater Analytical Data
Former EZ Serve Location #100877
Delta Project No. RPMS-877-A

Well	Sample Collection Date	Casing Elevation (msl)	Depth to Water (feet)	Depth to Product (feet)	Water Table Elevation (msl)	TPHg (µg/L)	Benzene (µg/L)	Toluene (µg/L)	Ethyl-benzene (µg/L)	Total Xylenes (µg/L)	MTBE (µg/L)	DIPE (µg/L)	ETBE (µg/L)	TBA (µg/L)	TAME (µg/L)
MW-5	2/5/1992	42.10	20.93	0.00	21.17	78000.00	7900.00	5000.00	2900.00	1800.00	--	--	--	--	--
MW-5	9/11/1992	42.10	20.27	0.00	21.83	49000.00	4700.00	400.00	1400.00	4100.00	--	--	--	--	--
MW-5	12/22/1992	42.10	19.99	0.00	22.11	34000.00	8600.00	340.00	2200.00	4800.00	--	--	--	--	--
MW-5	3/3/1993	42.10	16.49	0.00	25.61	22000.00	7500.00	640.00	1300.00	3400.00	--	--	--	--	--
MW-5	6/23/1993	42.10	17.02	0.00	25.08	15000.00	5800.00	120.00	1100.00	2100.00	--	--	--	--	--
MW-5	9/30/1993	42.10	18.25	0.00	23.85	25000.00	7600.00	410.00	1000.00	4400.00	--	--	--	--	--
MW-5	2/6/1994	42.10	18.26	0.00	23.84	23000.00	6000.00	180.00	2000.00	5900.00	--	--	--	--	--
MW-5	5/2/1994	42.10	17.50	0.00	24.60	8000.00	1300.00	29.00	440.00	770.00	--	--	--	--	--
MW-5	7/1/1994	42.10	17.79	0.00	24.31	10000.00	1700.00	97.00	600.00	1400.00	--	--	--	--	--
MW-5	9/20/1994	42.10	20.77	0.00	21.33	8400.00	1600.00	54.00	650.00	1400.00	--	--	--	--	--
MW-5	12/5/1994	42.10	18.02	0.00	24.08	10000.00	1800.00	<50	620.00	1400.00	--	--	--	--	--
MW-5	3/10/1995	42.10	14.93	0.00	27.17	--	--	--	--	--	--	--	--	--	--
MW-5	3/15/1995	42.10	14.70	0.00	27.40	5300.00	1100.00	11.00	180.00	320.00	--	--	--	--	--
MW-5	9/23/1996	42.10	15.19	0.00	26.91	9800.00	1800.00	11.00	470.00	510.00	100.00	--	--	--	--
MW-5	12/4/1996	42.10	15.78	0.00	26.32	10000.00	2200.00	9.00	550.00	430.00	70.00	--	--	--	--
MW-5	4/8/1997	42.10	13.39	0.00	28.71	11000.00	1300.00	15.00	450.00	720.00	180.00	--	--	--	--
MW-5	6/30/1997	42.10	14.83	0.00	27.27	3800.00	500.00	<	75.00	84.00	<	--	--	--	--
MW-5	11/25/1997	42.10	16.14	0.00	25.96	8200.00	1300.00	14.00	310.00	220.00	<	--	--	--	--
MW-5	6/1/1998	42.10	10.10	0.00	32.00	3600.00	290.00	12.00	52.00	52.00	81.00	--	--	--	--
MW-5	6/14/2001	42.10	15.19	0.00	26.91	5100.00	44.00	0.71	110.00	23.00	<5.0	--	--	--	--
MW-5	11/7/2001	42.10	16.47	0.00	25.63	7600.00	220.00	<5.0	550.00	30.00	<5.0	<5.0	<5.0	<50	<5.0
MW-5	1/30/2002	42.10	14.27	0.00	27.83	6200.00	180.00	<20	310.00	130.00	<20	<20	<20	<200	<20
MW-5	5/29/2002	42.10	14.73	0.00	27.37	3900.00	66.00	0.80	110.00	7.40	0.90	2.00	<0.5	<5.0	<0.5
MW-5	8/14/2002	42.10	15.73	0.00	26.37	4300.00	80.00	0.90	150.00	12.00	1.10	<0.5	<0.5	<5.0	<0.5
MW-5	11/15/2002	42.10	16.27	0.00	25.83	7000.00	99.00	<5.0	250.00	500.00	<5.0	<5.0	<5.0	<50	<5.0
MW-5	10/25/2004	42.10	16.15	0.00	25.95	4800.00	27.00	0.50	50.00	3.70	0.79	<0.50	<0.50	<5.0	<0.50

Table 1
Groundwater Analytical Data
Former EZ Serve Location #100877
Delta Project No. RPMS-877-A

Well	Sample Collection Date	Casing Elevation (msl)	Depth to Water (feet)	Depth to Product (feet)	Water Table Elevation (msl)	TPHg (µg/L)	Benzene (µg/L)	Toluene (µg/L)	Ethyl-benzene (µg/L)	Total Xylenes (µg/L)	MTBE (µg/L)	DIPE (µg/L)	ETBE (µg/L)	TBA (µg/L)	TAME (µg/L)
MW-6	2/5/1992	42.33	21.29	0.00	21.04	51000.00	5400.00	3500.00	3600.00	10000.00	--	--	--	--	--
MW-6	9/11/1992	42.33	20.56	0.00	21.77	24000.00	2500.00	830.00	1400.00	2300.00	--	--	--	--	--
MW-6	12/22/1992	42.33	20.31	0.00	22.02	23000.00	5100.00	630.00	2000.00	3100.00	--	--	--	--	--
MW-6	3/3/1993	42.33	16.83	0.00	25.50	18000.00	4400.00	820.00	1400.00	2400.00	--	--	--	--	--
MW-6	6/23/1993	42.33	17.30	0.00	25.03	18000.00	4600.00	850.00	2700.00	3400.00	--	--	--	--	--
MW-6	9/30/1993	42.33	19.05	0.00	23.28	--	--	--	--	--	--	--	--	--	--
MW-6	2/6/1994	42.33	18.55	0.00	23.78	20000.00	4600.00	690.00	2100.00	2500.00	--	--	--	--	--
MW-6	5/2/1994	42.33	17.74	0.00	24.59	5300.00	930.00	54.00	610.00	240.00	--	--	--	--	--
MW-6	7/1/1994	42.33	18.09	0.00	24.24	10000.00	1500.00	160.00	850.00	690.00	--	--	--	--	--
MW-6	9/20/1994	42.33	21.05	0.00	21.28	11000.00	2000.00	140.00	1200.00	760.00	--	--	--	--	--
MW-6	12/6/1994	42.33	18.33	0.00	24.00	8600.00	1300.00	87.00	980.00	610.00	--	--	--	--	--
MW-6	3/10/1995	42.33	15.35	0.00	26.98	--	--	--	--	--	--	--	--	--	--
MW-6	3/15/1995	42.33	14.91	0.00	27.42	9800.00	1600.00	110.00	1000.00	1000.00	--	--	--	--	--
MW-6	9/23/1996	42.33	15.50	0.00	26.83	12000.00	520.00	55.00	930.00	350.00	51.00	--	--	--	--
MW-6	12/4/1996	42.33	16.06	0.00	26.27	11000.00	390.00	25.00	680.00	170.00	130.00	--	--	--	--
MW-6	4/8/1997	42.33	13.64	0.00	28.69	17000.00	700.00	92.00	1400.00	900.00	2700.00	--	--	--	--
MW-6	6/30/1997	42.33	15.08	0.00	27.25	11000.00	270.00	37.00	590.00	450.00	<	--	--	--	--
MW-6	11/25/1997	42.33	16.40	0.00	25.93	9100.00	130.00	26.00	500.00	150.00	310.00	--	--	--	--
MW-6	6/1/1998	42.33	10.31	0.00	32.02	14000.00	190.00	50.00	680.00	400.00	160.00	--	--	--	--
MW-6	6/14/2001	42.33	15.46	0.00	26.87	6400.00	29.00	6.30	200.00	55.00	<20	--	--	--	--
MW-6	11/7/2001	42.33	16.71	0.00	25.62	7200.00	34.00	8.70	180.00	31.00	<5.0	<5.0	<5.0	<5.0	<5.0
MW-6	1/30/2002	42.33	14.60	0.00	27.73	6600.00	32.00	7.20	130.00	28.00	<5.0	<5.0	<5.0	<5.0	<5.0
MW-6	5/29/2002	42.33	14.99	0.00	27.34	5200.00	26.00	7.00	150.00	27.00	<5.0	<5.0	<5.0	<5.0	<5.0
MW-6	8/14/2002	42.33	16.03	0.00	26.30	5300.00	24.00	6.60	120.00	22.00	<2.0	<2.0	<2.0	<2.0	<2.0
MW-6	11/15/2002	42.33	16.53	0.00	25.80	5000.00	19.00	4.70	70.00	38.00	<0.5	<0.5	<0.5	<5.0	<0.5
MW-6	10/25/2004	42.33	16.43	0.00	25.90	3600.00	9.80	2.10	83.00	16.00	2.30	<0.50	<0.50	<5.0	<0.50

Table 1
Groundwater Analytical Data
Former EZ Serve Location #100877
Delta Project No. RPMS-877-A

Well	Sample Collection Date	Casing Elevation (msl)	Depth to Water (feet)	Depth to Product (feet)	Water Table Elevation (msl)	TPHg (µg/L)	Benzene (µg/L)	Toluene (µg/L)	Ethyl-benzene (µg/L)	Total Xylenes (µg/L)	MTBE (µg/L)	DIPE (µg/L)	ETBE (µg/L)	TBA (µg/L)	TAME (µg/L)
MW-7	6/23/1993	42.70	17.87	0.00	24.83	29000.00	4200.00	71.00	4400.00	5600.00	--	--	--	--	--
MW-7	9/30/1993	42.70	18.94	0.00	23.76	30000.00	3200.00	71.00	2800.00	3400.00	--	--	--	--	--
MW-7	2/6/1994	42.70	19.11	19.05	23.63	--	--	--	--	--	--	--	--	--	--
MW-7	5/2/1994	42.70	18.11	0.00	24.59	5700.00	630.00	13.00	660.00	400.00	--	--	--	--	--
MW-7	7/1/1994	42.70	18.72	0.00	23.98	3100.00	180.00	99.00	160.00	520.00	--	--	--	--	--
MW-7	9/20/1994	42.70	21.41	0.00	21.29	6100.00	540.00	6.00	750.00	730.00	--	--	--	--	--
MW-7	12/5/1994	42.70	18.66	0.00	24.04	3700.00	280.00	<10	430.00	350.00	--	--	--	--	--
MW-7	3/10/1995	42.70	15.72	0.00	26.98	3900.00	310.00	<10	540.00	540.00	--	--	--	--	--
MW-7	3/14/1995	42.70	15.23	0.00	27.47	1900.00	290.00	4.00	26.00	296.00	--	--	--	--	--
MW-7	9/23/1996	42.70	15.94	0.00	26.76	6300.00	76.00	<	420.00	270.00	15.00	--	--	--	--
MW-7	12/4/1996	42.70	16.43	0.00	26.27	7800.00	67.00	<	600.00	350.00	22.00	--	--	--	--
MW-7	4/8/1997	42.70	14.10	0.00	28.60	5600.00	42.00	<	240.00	96.00	<	--	--	--	--
MW-7	6/30/1997	42.70	15.51	0.00	27.19	5500.00	<	79.00	<	44.00	280.00	--	--	--	--
MW-7	11/25/1997	42.70	16.80	0.00	25.90	2400.00	23.00	5.40	<	54.00	120.00	--	--	--	--
MW-7	6/1/1998	42.70	10.31	0.00	32.39	14000.00	190.00	50.00	680.00	400.00	160.00	--	--	--	--
MW-7	6/14/2001	42.70	15.46	0.00	27.24	6400.00	29.00	6.00	200.00	55.00	<20	--	--	--	--
MW-7	11/7/2001	42.70	--	--	--	--	--	--	--	--	--	--	--	--	--
MW-7	1/30/2002	42.70	14.97	0.00	27.73	6200.00	1.50	<0.5	96.00	4.60	<0.5	<5.0	<5.0	<5.0	<5.0
MW-7	5/29/2002	42.70	15.49	0.00	27.21	1600.00	1.00	<0.5	3.40	1.90	<0.5	<0.5	<0.5	<5.0	<0.5
MW-7	8/14/2002	42.70	16.44	0.00	26.26	4100.00	1.30	<0.5	74.00	1.30	<0.5	<0.5	<0.5	<5.0	<0.5
MW-7	11/15/2002	42.70	16.91	0.00	25.79	1000.00	0.60	<0.5	<0.5	0.60	<0.5	<0.5	<0.5	<5.0	<0.5
MW-7	10/25/2004					well not sampled, can't locate well									

Table 1
Groundwater Analytical Data
Former EZ Serve Location #100877
Delta Project No. RPMS-877-A

Well	Sample Collection Date	Casing Elevation (msl)	Depth to Water (feet)	Depth to Product (feet)	Water Table Elevation (msl)	TPHg (µg/L)	Benzene (µg/L)	Toluene (µg/L)	Ethyl-benzene (µg/L)	Total Xylenes (µg/L)	MTBE (µg/L)	DIPE (µg/L)	ETBE (µg/L)	TBA (µg/L)	TAME (µg/L)
MW-8	6/23/1993	97.61	17.64	0.00	79.97	350.00	43.00	9.00	35.00	67.00	--	--	--	--	--
MW-8	9/30/1993	97.61	18.85	0.00	78.76	2700.00	190.00	340.00	170.00	720.00	--	--	--	--	--
MW-8	2/6/1994	97.61	18.91	0.00	78.70	<100	<1	1.00	1.00	2.00	--	--	--	--	--
MW-8	5/2/1994	97.61	18.11	0.00	79.50	<100	<1	3.00	<1	7.00	--	--	--	--	--
MW-8	7/1/1994	97.61	18.43	0.00	79.18	300.00	18.00	48.00	19.00	37.00	--	--	--	--	--
MW-8	9/20/1994	97.61	21.43	0.00	76.18	<100	<1	<1	<1	<1	--	--	--	--	--
MW-8	12/5/1994	97.61	18.72	0.00	78.89	<50	<0.5	<0.5	<0.5	<0.5	--	--	--	--	--
MW-8	3/10/1995	97.61	18.69	0.00	78.92	--	--	--	--	--	--	--	--	--	--
MW-8	3/14/1995	97.61	14.83	0.00	82.78	<50	<0.5	<0.5	<0.5	1.00	--	--	--	--	--
MW-8	9/23/1996	97.61	15.83	0.00	81.78	<	<	<	<	<	<	<	<	<	<
MW-8					Not Sampled, well inaccessible since 4th Quarter, 1996.										
MW-9	6/23/1993	95.41	15.94	0.00	79.47	45000.00	14000.00	1200.00	2800.00	12000.00	--	--	--	--	--
MW-9	9/30/1993	95.41	17.05	0.00	78.36	86000.00	22000.00	1100.00	3300.00	15000.00	--	--	--	--	--
MW-9	2/6/1994	95.41	17.07	0.00	78.34	43000.00	10000.00	460.00	2100.00	7500.00	--	--	--	--	--
MW-9	5/2/1994	95.41	16.24	0.00	79.17	17000.00	5400.00	270.00	1300.00	4700.00	--	--	--	--	--
MW-9	7/1/1994	95.41	16.59	0.00	78.82	10000.00	2100.00	120.00	450.00	1300.00	--	--	--	--	--
MW-9	9/20/1994	95.41	19.61	0.00	75.80	7500.00	2200.00	97.00	400.00	1200.00	--	--	--	--	--
MW-9	12/5/1994	95.41	16.85	0.00	78.56	10000.00	2700.00	130.00	530.00	1600.00	--	--	--	--	--
MW-9	3/10/1995	95.41	--	--	--	--	--	--	--	--	--	--	--	--	--
MW-9	3/14/1995	95.41	14.18	0.00	81.23	18000.00	5900.00	270.00	1200.00	3680.00	--	--	--	--	--
MW-9					Not Sampled, well inaccessible since 1st Quarter, 1995										

Table 1
Groundwater Analytical Data
Former EZ Serve Location #100877
Delta Project No. RPMS-877-A

Well	Sample Collection Date	Casing Elevation (msl)	Depth to Water (feet)	Depth to Product (feet)	Water Table Elevation (msl)	TPHg (µg/L)	Benzene (µg/L)	Toluene (µg/L)	Ethylbenzene (µg/L)	Total Xylenes (µg/L)	MTBE (µg/L)	DIPE (µg/L)	ETBE (µg/L)	TBA (µg/L)	TAME (µg/L)
MW-10	6/23/1993	97.11	17.39	0.00	79.72	35000.00	980.00	640.00	3500.00	12000.00	--	--	--	--	--
MW-10	9/30/1993	97.11	18.58	0.00	78.53	4000.00	230.00	12.00	100.00	680.00	--	--	--	--	--
MW-10	2/6/1994	97.11	18.61	0.00	78.50	2000.00	69.00	12.00	220.00	120.00	--	--	--	--	--
MW-10	5/2/1994	97.11	17.83	0.00	79.28	710.00	16.00	6.00	85.00	62.00	--	--	--	--	--
MW-10	7/1/1994	97.11	18.17	0.00	78.94	2000.00	52.00	43.00	120.00	210.00	--	--	--	--	--
MW-10	9/20/1994	97.11	21.15	0.00	75.96	2800.00	34.00	16.00	270.00	560.00	--	--	--	--	--
MW-10	12/5/1994	97.11	18.43	0.00	78.68	2700.00	30.00	13.00	260.00	430.00	--	--	--	--	--
MW-10	3/10/1995	97.11	15.37	0.00	81.74	--	--	--	--	--	--	--	--	--	--
MW-10	3/14/1995	97.11	15.93	0.00	81.18	1400.00	18.00	6.00	200.00	239.00	--	--	--	--	--
MW-10	9/23/1996	97.11	15.59	0.00	81.52	3800.00	4.00	2.90	220.00	170.00	397.00	--	--	--	--
MW-10	12/4/1996	97.11	16.15	0.00	80.96	4600.00	1.60	7.70	260.00	150.00	20.00	--	--	--	--
MW-10						Not Sampled, well inaccessible since 4th Quarter, 1996.									
MW-11	2/10/1995	92.68	11.80	0.00	80.88	7000.00	140.00	22.00	600.00	1000.00	--	--	--	--	--
MW-11	3/10/1995	92.68	11.58	0.00	81.10	--	--	--	--	--	--	--	--	--	--
MW-11	3/14/1995	92.68	13.96	0.00	78.72	6000.00	200.00	17.00	750.00	1276.00	--	--	--	--	--
MW-11	9/23/1996	92.68	12.29	0.00	80.39	27000.00	55.00	81.00	300.00	3500.00	40.00	--	--	--	--
MW-11	12/4/1996	92.68	--	--	--	--	--	--	--	--	--	--	--	--	--
MW-11	4/8/1997	92.68	10.51	0.00	82.17	24000.00	280.00	130.00	3000.00	3700.00	<	--	--	--	--
MW-11						Not Sampled, well inaccessible since 2nd Quarter, 1997.									

Table 1
Groundwater Analytical Data
Former EZ Serve Location #100877
Delta Project No. RPMS-877-A

Well	Sample Collection Date	Casing Elevation (msl)	Depth to Water (feet)	Depth to Product (feet)	Water Table Elevation (msl)	TPHg (µg/L)	Benzene (µg/L)	Toluene (µg/L)	Ethylbenzene (µg/L)	Total Xylenes (µg/L)	MTBE (µg/L)	DIPE (µg/L)	ETBE (µg/L)	TBA (µg/L)	TAME (µg/L)
MW-12	2/10/1995	43.25	16.30	0.00	26.95	<50	<0.5	<0.5	<0.5	<0.5	--	--	--	--	--
MW-12	3/10/1995	43.25	16.37	0.00	26.88	--	--	--	--	--	--	--	--	--	--
MW-12	3/14/1995	43.25	15.69	0.00	27.56	<50	<0.5	<0.5	<0.5	0.90	--	--	--	--	--
MW-12	9/23/1996	43.25	16.67	0.00	26.58	<	<	1.60	<	<	<	--	--	--	--
MW-12	12/4/1996	43.25	17.16	0.00	26.09	<	3.20	<	1.90	3.40	<	--	--	--	--
MW-12	4/8/1997	43.25	14.88	0.00	28.37	<	<	<	<	<	<	--	--	--	--
MW-12	6/30/1997	43.25	16.33	0.00	26.92	--	--	--	--	--	--	--	--	--	--
MW-12	11/25/1997	43.25	17.61	0.00	25.64	--	--	--	--	--	--	--	--	--	--
MW-12	6/1/1998	43.25	11.58	0.00	31.67	--	--	--	--	--	--	--	--	--	--
MW-12	6/14/2001	43.25	16.62	0.00	26.63	<50	<0.50	<0.50	<0.50	<0.50	<5.0	--	--	--	--
MW-12	11/7/2001	43.25	17.91	0.00	25.34	<50	<0.5	<0.5	<0.5	<0.5	<0.5	<0.5	<0.5	<5.0	<0.5
MW-12	1/30/2002	43.25	15.60	0.00	27.65	<50	<0.5	<0.5	<0.5	<0.5	<0.5	<0.5	<0.5	<5.0	<0.5
MW-12	5/29/2002	43.25	16.24	0.00	27.01	<50	<0.5	<0.5	<0.5	<0.5	<0.5	<0.5	<0.5	<5.0	<0.5
MW-12	8/14/2002	43.25	17.20	0.00	26.05	<50	<0.5	<0.5	<0.5	<0.5	<0.5	<0.5	<0.5	<5.0	<0.5
MW-12	11/15/2002	43.25	17.62	0.00	25.63	<50	<0.5	<0.5	<0.5	<0.5	<0.5	<0.5	<0.5	<5.0	<0.5
MW-12	10/25/2004					well not sampled, cars parked on well									

Table 1
Groundwater Analytical Data
Former EZ Serve Location #100877
Delta Project No. RPMS-877-A

Well	Sample Collection Date	Casing Elevation (msl)	Depth to Water (feet)	Depth to Product (feet)	Water Table Elevation (msl)	TPHg (µg/L)	Benzene (µg/L)	Toluene (µg/L)	Ethyl-benzene (µg/L)	Total Xylenes (µg/L)	MTBE (µg/L)	DIPE (µg/L)	ETBE (µg/L)	TBA (µg/L)	TAME (µg/L)
MW-13	2/10/1995	40.97	14.45	0.00	26.52	<50	<0.5	<0.5	<0.5	<0.5	--	--	--	--	--
MW-13	3/10/1995	40.97	14.30	0.00	26.67	--	--	--	--	--	--	--	--	--	--
MW-13	3/14/1995	40.97	15.81	0.00	25.16	<50	<0.5	<0.5	<0.5	1.00	--	--	--	--	--
MW-13	9/23/1996	40.97	14.60	0.00	26.37	<	<	0.80	1.00	<	<	--	--	--	--
MW-13	12/4/1996	40.97	--	--	--	--	--	--	--	--	--	--	--	--	--
MW-13	4/8/1997	40.97	12.75	0.00	28.22	<	<	<	<	<	<	--	--	--	--
MW-13	6/30/1997	40.97	14.13	0.00	26.84	--	--	--	--	--	--	--	--	--	--
MW-13	11/25/1997	40.97	15.48	0.00	25.49	--	--	--	--	--	--	--	--	--	--
MW-13	6/1/1998	40.97	9.58	0.00	31.39	--	--	--	--	--	--	--	--	--	--
MW-13	6/14/2001	40.97	14.51	0.00	26.46	<50	<0.50	<0.50	<0.50	<0.50	<5.0	--	--	--	--
MW-13	11/7/2001	40.97	15.85	0.00	25.12	<50	<0.5	<0.5	<0.5	<0.5	<0.5	<0.5	<0.5	<5.0	<0.5
MW-13	1/30/2002	40.97	13.65	0.00	27.32	<50	<0.5	<0.5	<0.5	<0.5	<0.5	<0.5	<0.5	<5.0	<0.5
MW-13	5/29/2002	40.97	14.10	0.00	26.87	<50	<0.5	<0.5	<0.5	<0.5	<0.5	<0.5	<0.5	<5.0	<0.5
MW-13	8/14/2002	40.97	15.13	0.00	25.84	<50	<0.5	<0.5	<0.5	<0.5	<0.5	<0.5	<0.5	<5.0	<0.5
MW-13	11/15/2002	40.97	--	--	--	--	--	--	--	--	--	--	--	--	--
MW-13	10/25/2004														

well not sampled, can't locate well

Table 1
Groundwater Analytical Data
Former EZ Serve Location #100877
Delta Project No. RPMS-877-A

Well	Sample Collection Date	Casing Elevation (msl)	Depth to Water (feet)	Depth to Product (feet)	Water Table Elevation (msl)	TPHg (µg/L)	Benzene (µg/L)	Toluene (µg/L)	Ethyl-benzene (µg/L)	Total Xylenes (µg/L)	MTBE (µg/L)	DIPE (µg/L)	ETBE (µg/L)	TBA (µg/L)	TAME (µg/L)
MW-14	2/10/1995	43.19	16.28	0.00	26.91	12000.00	42.00	8.00	740.00	2100.00	--	--	--	--	--
MW-14	3/10/1995	43.19	16.33	0.00	26.86	--	--	--	--	--	--	--	--	--	--
MW-14	3/14/1995	43.19	14.87	0.00	28.32	1400.00	6.00	2.00	36.00	298.00	--	--	--	--	--
MW-14	9/23/1996	43.19	16.67	0.00	26.52	6400.00	2.80	<	690.00	96.00	9.60	--	--	--	--
MW-14	12/4/1996	43.19	17.06	0.00	26.13	9500.00	6.30	<	1100.00	400.00	30.00	--	--	--	--
MW-14	4/8/1997	43.19	14.77	0.00	28.42	2900.00	<	2.70	220.00	21.00	<	--	--	--	--
MW-14	6/30/1997	43.19	16.22	0.00	26.97	74.00	1.30	<	0.51	0.68	<	--	--	--	--
MW-14	11/25/1997	43.19	17.52	0.00	25.67	<	<	<	<	<	<	--	--	--	--
MW-14	6/1/1998	43.19	11.46	0.00	31.73	<50	<0.5	<0.5	<0.5	<0.5	<5	--	--	--	--
MW-14	6/14/2001	43.19	16.53	0.00	26.66	470.00	<0.5	<0.5	2.80	1.00	<5	--	--	--	--
MW-14	11/7/2001	43.19	17.84	0.00	25.35	<50	<0.5	<0.5	<0.5	<0.5	<0.5	<0.5	<0.5	<5.0	<0.5
MW-14	1/30/2002	43.19	15.55	0.00	27.64	<50	<0.5	<0.5	<0.5	<0.5	<0.5	<0.5	<0.5	<5.0	<0.5
MW-14	5/29/2002	43.19	16.14	0.00	27.05	<50	<0.5	<0.5	<0.5	<0.5	<0.5	<0.5	<0.5	<5.0	<0.5
MW-14	8/14/2002	43.19	17.12	0.00	26.07	<50	<0.5	<0.5	<0.5	<0.5	<0.5	<0.5	<0.5	<5.0	<0.5
MW-14	11/15/2002	43.19	17.56	0.00	25.63	<50	<0.5	<0.5	<0.5	<0.5	<0.5	<0.5	<0.5	<5.0	<0.5
MW-14	10/25/2004					well not sampled, can't locate well / cars parked on well									

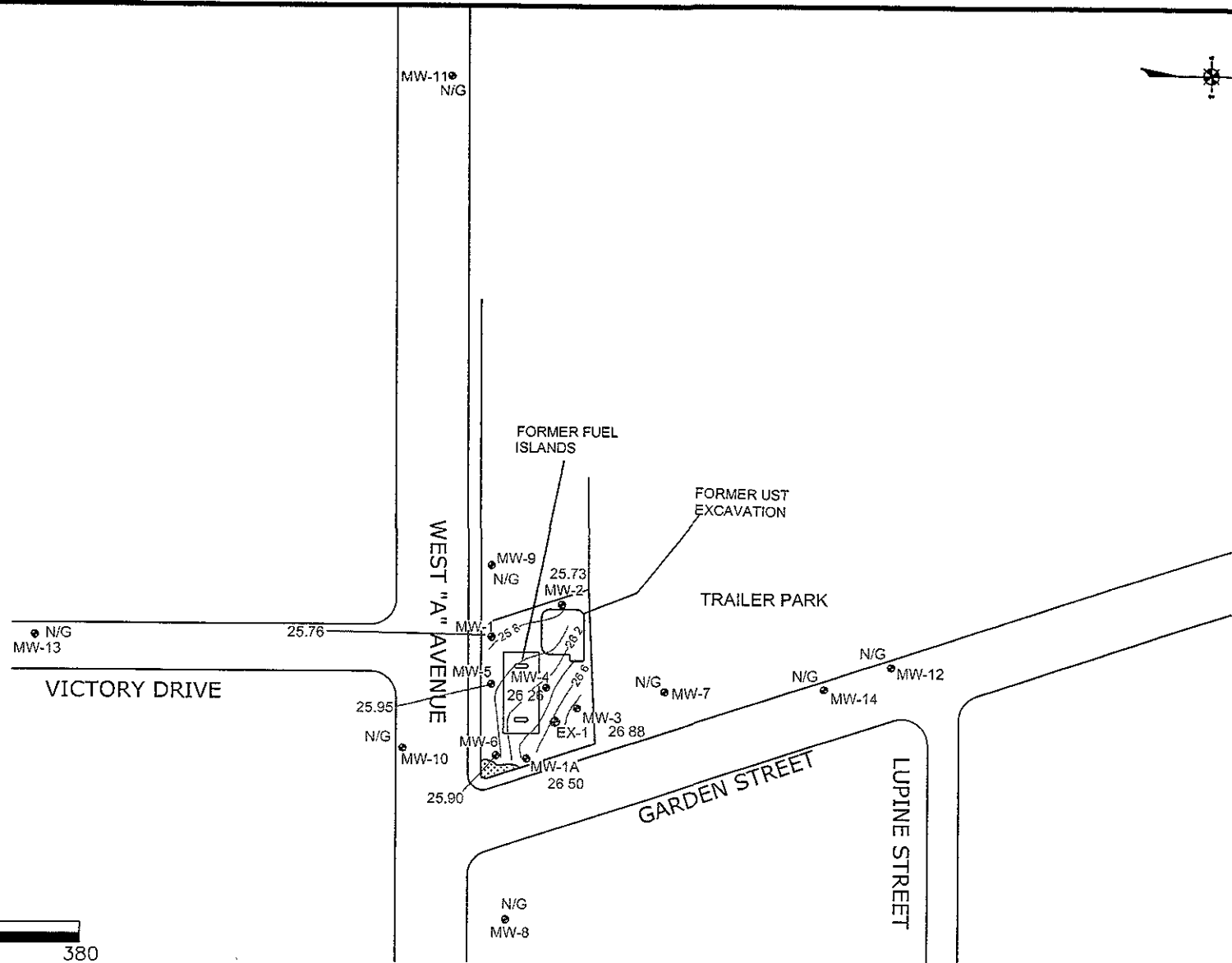
Table 1
Groundwater Analytical Data
Former EZ Serve Location #100877
Delta Project No. RPMS-877-A

Well	Sample Collection Date	Casing Elevation (msl)	Depth to Water (feet)	Depth to Product (feet)	Water Table Elevation (msl)	TPHg (µg/L)	Benzene (µg/L)	Toluene (µg/L)	Ethyl- benzene (µg/L)	Total Xylenes (µg/L)	MTBE (µg/L)	DIPE (µg/L)	ETBE (µg/L)	TBA (µg/L)	TAME (µg/L)
EX-1	11/15/2002	--	17.02	0.00	--	67.00	4.10	<0.5	<0.5	<0.5	0.70	<0.5	<0.5	<5.0	<0.5
EX-1	10/25/2004	--	16.91	0.00	--	96.00	2.10	<0.50	4.90	1.80	<0.5	<0.5	<0.5	<5.0	<0.50

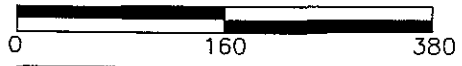
Notes: No known groundwater monitoring or sampling was conducted between June 1, 1998 and June 14, 2001 and June 14, 2001 and November 7, 2001. Wellhead elevations resurveyed on January 30, 2002.

Explanations:

- msl = mean seal level
- (µg/L) = micrograms per liter
- TBA = Tertiary butyl alcohol
- MTBE = Methyl tertiary butyl ether
- DIPE = Di-isopropyl ether
- ETBE = Ethyl tertiary butyl ether
- TAME = Tertiary amyl methyl ether
- EDB = 1,2-Dibromoethane
- = Not measured, or analyzed
- DRY = Insufficient water to sample
- TPHg = Total Petroleum Hydrocarbons as gasoline (EPA Method 8015).
- SHEEN = Discontinuous, non-measurable thickness of PSH.
- < = Sample reported as "not detected," in previous tables, reporting limit not known.



SCALE (feet)



LEGEND		No.	Revision/Issue	Date
● MW-11	MONITORING WELLS			
● EX-1	PROPOSED GROUNDWATER EXTRACT ON WELL LOCATION			
25.73	GROUNDWATER ELEVATION			
—	GROUNDWATER CONTOUR			
N/G	NOT GAUGED			
		Drawn By	Reviewed By	



Delta
Environmental
Consultants, Inc.
1910 EAST PARHAM ROAD
SUITE 100
RICHMOND, VA 23228

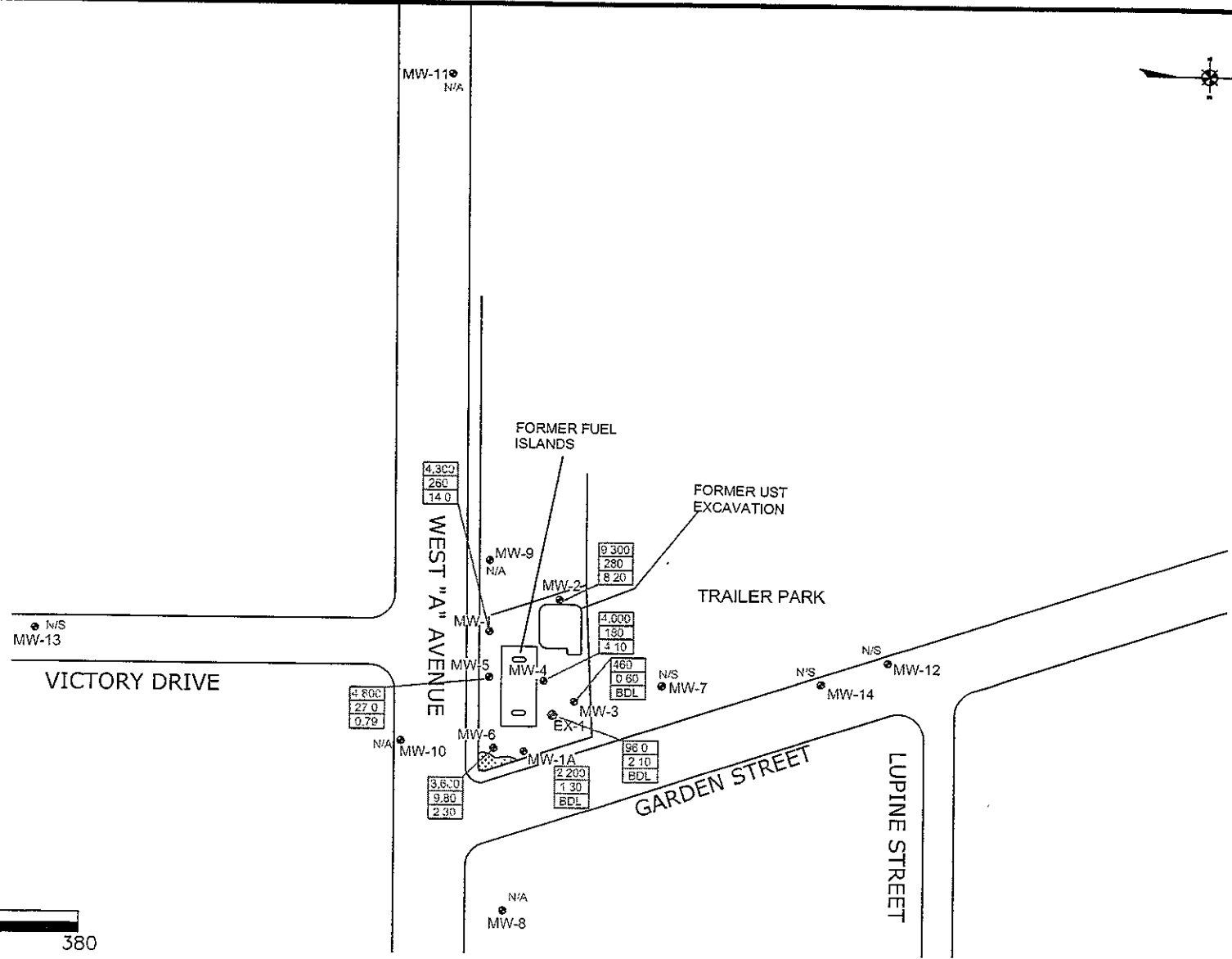
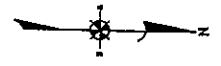
Groundwater Contours
(10/25/2004)

FORMER E-Z SERVE
LOCATION NO. 100877
525 WEST A STREET
HAYWARD, CALIFORNIA

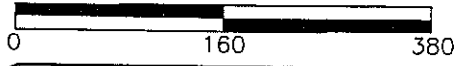
Project
100877
Date
12/14/04
Scale
AS SHOWN

FIGURE:

2



SCALE (feet)



LEGEND		No.	Revision/Issue	Date
● MW-11	MONITORING WELLS			
● EX-1	PROPOSED GROUNDWATER EXTRACTION WELL LOCATION			
TP, B, N/A, BDL	Concentrations in µg/L			
<small>BDL = Benzene Laboratory Detection Limits N/S = Not Sampled N/A = Not Analyzed to Sample</small>				
Drawn By		Reviewed By		

Delta
Environmental
Consultants, Inc.
1910 EAST PARHAM ROAD
SUITE 100
RICHMOND, VA 23228

Groundwater Analytical
(10/25/2004)

FORMER E-2 SERVE
LOCATION NO. 100877
525 WEST A STREET
HAYWARD, CALIFORNIA

Project
100877

Date
12/14/04

Scale
AS SHOWN

FIGURE:

3

DOULOS ENVIRONMENTAL, INC.

SAMPLING INFORMATION SHEET

Client: Delta Env.
 Site: 525 West A St. (100877)
Hayward, CA

Sampling Date: 10.25.04
 Project No.: _____
 Well Designation: MW-1

Is setup of traffic control devices required? NO YES time: _____ hours
 Is there standing water in the well box? NO YES Above TOC _____ Below TOC _____
 Is top of casing cut level? NO YES If no, see remarks _____
 Is well cap sealed and locked? NO YES If no, see remarks _____
 Height of well casing riser (in inches): 6
 Well cover type: 8" or 12" UV _____ 12" EMCO 8" or 12" BK _____ 8" Christy _____
 12" Christy _____ 8" M&D _____ 12" M&D _____ 12" DWP _____
 12" CNI _____ 36" CNI _____ 12" Pomeco _____ Other: _____
 General condition of wellhead assembly: Excellent _____ Good Fair _____ Poor _____

Purging Equipment: _____ 2" disposable bailer Submersible pump
 _____ 2" PVC bailer _____ Dedicated bailer
 _____ 4" PVC bailer _____ Centrifugal pump
 Sampled with: Disposable bailer Teflon bailer _____ Disposable Tubing _____

Well Diameter: 2" _____ 4" 6" _____ 8" _____
 Purge Vol. Multiplier: 0.16 _____ 0.65 _____ 1.47 _____ 2.61 gal/ft.
Initial Measurement Recharge Measurement
 Time: 7:12 Time: 14:00 Calculated purge: 27.1
 Depth of well: 29.89 Depth to water: 16.84 Actual purge: 27.5
 Depth to water: 15.99

Start purge: 13:10 Sampling time: 14:02

Time	Temperature	E.C.	pH	Turbidity	Volume
13:24	19.3	1358	7.43	—	1
13:37	19.6	1387	7.51	—	2
13:50	19.5	1391	7.26	—	3

Sample appearance: clear Lock: Master

Equipment replaced: (check all that apply) Note condition of replaced item(s)
 2" Locking Cap: _____ Lock: _____ 7/32 Allenhead: _____
 4" Locking Cap: _____ Lock-Dolphin: _____ 9/16 Bolt: _____
 6" Locking Cap: _____ Pinned Allenhead (DWP): _____

Remarks: _____

Signature: _____

DOULOS ENVIRONMENTAL, INC.

SAMPLING INFORMATION SHEET

Client: Delta Env.
 Site: 525 West A St. (100877)
Hayward, CA

Sampling Date: 10-25-04
 Project No.: _____
 Well Designation: mw-1A

Is setup of traffic control devices required? NO YES time: _____ hours
 Is there standing water in the well box? NO YES Above TOC _____ Below TOC _____
 Is top of casing cut level? NO YES If no, see remarks
 Is well cap sealed and locked? NO YES If no, see remarks
 Height of well casing riser (in inches): 2
 Well cover type: 8" or 12" UV _____ 12" EMCO _____ 8" or 12" BK _____ 8" Christy _____
 12" Christy _____ 8" M&D East 12" M&D _____ 12" DWP _____
 12" CNI _____ 36" CNI _____ 12" Pomeco _____ Other: _____
 General condition of wellhead assembly: Excellent _____ Good Fair _____ Poor _____

Purging Equipment: _____ 2" disposable bailer _____ Submersible pump
 _____ 2" PVC bailer _____ Dedicated bailer
 _____ 4" PVC bailer _____ Centrifugal pump
 Sampled with: Disposable bailer Teflon bailer _____ Disposable Tubing _____

Well Diameter: 2" 4" _____ 6" _____ 8" _____
 Purge Vol. Multiplier: 0.16 0.65 1.47 2.61 gal/ft.
Initial Measurement Recharge Measurement
 Time: 7:00 Time: 10:51 Calculated purge: 5.8
 Depth of well: 27.05 Depth to water: 17.49 Actual purge: 6.0
 Depth to water: 16.90

Start purge: 10:00 Sampling time: 10:53

Time	Temperature	E.C.	pH	Turbidity	Volume
10:13	19.1	1314	7.60	—	1
10:28	19.8	1353	7.36	—	2
10:45	20.0	1322	7.35	—	3

Sample appearance: clear Lock: Master

Equipment replaced: (check all that apply) Note condition of replaced item(s)
 2" Locking Cap: _____ Lock: _____ 7/32 Allenhead: _____
 4" Locking Cap: _____ Lock-Dolphin: _____ 9/16 Bolt: _____
 6" Locking Cap: _____ Pinned Allenhead (DWP): _____

Remarks: LT Sheen in well

Signature: _____

DOULOS ENVIRONMENTAL, INC.

SAMPLING INFORMATION SHEET

Client: Delta Env.

Sampling Date: 10-25-09

Site: 525 West A St. (100877)

Project No.: _____

Hayward, CA

Well Designation: NW-2

Is setup of traffic control devices required? NO YES time: _____ hours
 Is there standing water in the well box? NO YES Above TOC _____ Below TOC _____
 Is top of casing cut level? NO YES If no, see remarks
 Is well cap sealed and locked? NO YES If no, see remarks
 Height of well casing riser (in inches): _____
 Well cover type: 8" or 12" UV _____ 12" EMCO 8" or 12" BK _____ 8" Christy _____
 12" Christy _____ 8" M&D _____ 12" M&D _____ 12" DWP _____
 12" CNI _____ 36" CNI _____ 12" Pomeco _____ Other: _____
 General condition of wellhead assembly: Excellent _____ Good Fair _____ Poor _____

Purging Equipment: _____ 2" disposable bailer _____ Submersible pump
 _____ 2" PVC bailer _____ Dedicated bailer
 _____ 4" PVC bailer _____ Centrifugal pump
 Sampled with: Disposable bailer Teflon bailer _____ Disposable Tubing _____

Well Diameter: 2" _____ 4" 6" _____ 8" _____
 Purge Vol. Multiplier: 0.16 _____ 0.65 _____ 1.47 _____ 2.61 gal/ft.
Initial Measurement Recharge Measurement
 Time: 7:15 Time: 15:08 Calculated purge: 245
 Depth of well: 30-14 Depth to water: 1803 Actual purge: 250
 Depth to water: 17-53

Start purge: 14:12 Sampling time: 15:10

Time	Temperature	E.C.	pH	Turbidity	Volume
14:25	19.5	1314	7.32		1
14:41	18.2	1277	7.37		2
14:55	19.1	1304	7.36		3

Sample appearance: Clear Lock: Mas T^{oo}

Equipment replaced: (check all that apply) Note condition of replaced item(s)
 2" Locking Cap: _____ Lock: _____ 7/32 Allenhead: _____
 4" Locking Cap: _____ Lock-Dolphin: _____ 9/16 Bolt: _____
 6" Locking Cap: _____ Pinned Allenhead (DWP): _____

Remarks: _____

Signature: _____

DOULOS ENVIRONMENTAL, INC.

SAMPLING INFORMATION SHEET

Client: Delta Env.
 Site: 525 West A St. (100877)
Hayward, CA

Sampling Date: 10-25-09
 Project No.: _____
 Well Designation: MW-3

Is setup of traffic control devices required? NO YES time: _____ hours
 Is there standing water in the well box? NO YES Above TOC _____ Below TOC _____
 Is top of casing cut level? NO YES If no, see remarks
 Is well cap sealed and locked? NO YES If no, see remarks
 Height of well casing riser (in inches): 3
 Well cover type: 8" or 12" UV _____ 12" EMCO 8" or 12" BK _____ 8" Christy _____
 12" Christy _____ 8" M&D _____ 12" M&D _____ 12" DWP _____
 12" CNI _____ 36" CNI _____ 12" Pomeco _____ Other: _____
 General condition of wellhead assembly: Excellent _____ Good Fair _____ Poor _____

Purging Equipment: _____ 2" disposable bailer Submersible pump
 _____ 2" PVC bailer _____ Dedicated bailer
 _____ 4" PVC bailer _____ Centrifugal pump
 Sampled with: Disposable bailer Teflon bailer _____ Disposable Tubing _____

Well Diameter: 2" _____ 4" 6" _____ 8" _____
 Purge Vol. Multiplier: 0.16 0.65 1.47 2.61 gal/ft.
Initial Measurement Recharge Measurement
 Time: 6:50 Time: 8:41 Calculated purge: 24.8
 Depth of well: 29.74 Depth to water: 18.94 Actual purge: 25.0
 Depth to water: 15.01

Start purge: 7:38 Sampling time: 8:43

Time	Temperature	E.C.	pH	Turbidity	Volume
7:50	18.2	1207	7.42	—	1
8:17	18.8	1259	7.28	—	2
8:30	18.2	1268	7.41	—	3

Sample appearance: clear Lock: Master

Equipment replaced: (check all that apply) Note condition of replaced item(s)
 2" Locking Cap: _____ Lock: _____ 7/32 Allenhead: _____
 4" Locking Cap: _____ Lock-Dolphin: _____ 9/16 Bolt: _____
 6" Locking Cap: _____ Pinned Allenhead (DWP): _____

Remarks: odor in well

Signature: _____

DOULOS ENVIRONMENTAL, INC.

SAMPLING INFORMATION SHEET

Client: Delta Env.

Sampling Date: 10-25-04

Site: 525 West A St. (100877)

Project No.: _____

Hayward, CA

Well Designation: NW-9

Is setup of traffic control devices required? NO YES time: _____ hours
 Is there standing water in the well box? NO YES Above TOC _____ Below TOC _____
 Is top of casing cut level? NO YES If no, see remarks _____
 Is well cap sealed and locked? NO YES If no, see remarks _____
 Height of well casing riser (in inches): 8
 Well cover type: 8" or 12" UV _____ 12" EMCO 8" or 12" BK _____ 8" Christy _____
 12" Christy _____ 8" M&D _____ 12" M&D _____ 12" DWP _____
 12" CNI _____ 36" CNI _____ 12" Pomeco _____ Other: _____
 General condition of wellhead assembly: Excellent _____ Good Fair _____ Poor _____

Purging Equipment: _____ 2" disposable bailer _____ Submersible pump
 _____ 2" PVC bailer _____ Dedicated bailer
 _____ 4" PVC bailer _____ Centrifugal pump
 Sampled with: Disposable bailer Teflon bailer _____ Disposable Tubing _____

Well Diameter: 2" _____ 4" 6" _____ 8" _____
 Purge Vol. Multiplier: 0.16 0.65 1.47 2.61 gal/ft.
Initial Measurement Recharge Measurement
 Time: 6:55 Time: 16:08 Calculated purge: 26.3
 Depth of well: 30.00 Depth to water: 17.81 Actual purge: 26.5
 Depth to water: 16.50

Start purge: 15:17 Sampling time: 16:10

Time	Temperature	E.C.	pH	Turbidity	Volume
15:30	19.1	1323	7.36		1
15:43	19.4	1321	7.41		2
16:00	19.0	1340	7.50		3

Sample appearance: clear

Lock: Dolphin

Equipment replaced: (check all that apply) Note condition of replaced item(s)
 2" Locking Cap: _____ Lock: _____ 7/32 Allenhead: _____
 4" Locking Cap: _____ Lock-Dolphin: _____ 9/16 Bolt: _____
 6" Locking Cap: _____ Pinned Allenhead (DWP): _____

Remarks: _____

Signature: _____

DOULOS ENVIRONMENTAL, INC.

SAMPLING INFORMATION SHEET

Client: Delta Env.
 Site: 525 West A St. (100877)
Hayward, CA

Sampling Date: 10-28-09
 Project No.: _____
 Well Designation: MW-5

Is setup of traffic control devices required? NO YES time: _____ hours
 Is there standing water in the well box? NO YES Above TOC _____ Below TOC
 Is top of casing cut level? NO YES If no, see remarks
 Is well cap sealed and locked? NO YES If no, see remarks
 Height of well casing riser (in inches): 6
 Well cover type: 8" or 12" UV _____ 12" EMCO 8" or 12" BK _____ 8" Christy _____
 12" Christy _____ 8" M&D _____ 12" M&D _____ 12" DWP _____
 12" CNI _____ 36" CNI _____ 12" Pomeco _____ Other: _____
 General condition of wellhead assembly: Excellent _____ Good Fair _____ Poor _____

Purging Equipment: _____ 2" disposable bailer Submersible pump
 _____ 2" PVC bailer _____ Dedicated bailer
 _____ 4" PVC bailer Centrifugal pump
 Sampled with: Disposable bailer Teflon bailer _____ Disposable Tubing _____

Well Diameter: 2" _____ 4" 6" _____ 8" _____
 Purge Vol. Multiplier: 0.16 _____ 0.65 _____ 1.47 _____ 2.61 gal/ft.
Initial Measurement Recharge Measurement
 Time: 7:09 Time: 12:58 Calculated purge: 27.3
 Depth of well: 30.20 Depth to water: 17.93 Actual purge: 27.5
 Depth to water: 16:15

Start purge: 12:10 Sampling time: 13:00

Time	Temperature	E.C.	pH	Turbidity	Volume
12:26	19.8	1428	7.32	—	1
12:40	20.2	1401	7.25	—	2
12:53	20.2	1431	7.24	—	3

Sample appearance: clear Lock: Master

Equipment replaced: (check all that apply) Note condition of replaced item(s)
 2" Locking Cap: _____ Lock: _____ 7/32 Allenhead: _____
 4" Locking Cap: _____ Lock-Dolphin: _____ 9/16 Bolt: _____
 6" Locking Cap: _____ Pinned Allenhead (DWP): _____

Remarks: _____

Signature: _____

Client: Delta Env.

Sampling Date: 10-25-09

Site: 525 West A St. (100877)

Project No.: _____

Hayward, CA

Well Designation: mw-6

Is setup of traffic control devices required? NO YES time: _____ hours
 Is there standing water in the well box? NO YES Above TOC _____ Below TOC
 Is top of casing cut level? NO YES If no, see remarks
 Is well cap sealed and locked? NO YES If no, see remarks
 Height of well casing riser (in inches): 6
 Well cover type: 8" or 12" UV _____ 12" EMCO 8" or 12" BK _____ 8" Christy _____
 12" Christy _____ 8" M&D _____ 12" M&D _____ 12" DWP _____
 12" CNI _____ 36" CNI _____ 12" Pomeco _____ Other: _____
 General condition of wellhead assembly: Excellent _____ Good _____ Fair _____ Poor _____

Purging Equipment: _____ 2" disposable bailer Submersible pump
 _____ 2" PVC bailer _____ Dedicated bailer
 _____ 4" PVC bailer _____ Centrifugal pump
 Sampled with: Disposable bailer Teflon bailer _____ Disposable Tubing _____

Well Diameter: 2" _____ 4" 6" _____ 8" _____
 Purge Vol. Multiplier: 0.16 _____ 0.65 _____ 1.47 _____ 2.61 gal/ft.
Initial Measurement Recharge Measurement
 Time: 7:04 Time: 12:01 Calculated purge: 26.9
 Depth of well: 30.0 Depth to water: _____ Actual purge: 27.0
 Depth to water: 16.43

Start purge: 11:05 Sampling time: 12:03

Time	Temperature	E.C.	pH	Turbidity	Volume
11:21	19.6	1417	7.25	—	1
11:34	19.5	1402	7.00	—	2
11:51	19.6	1422	7.28	—	3

Sample appearance: clear Lock: NA

Equipment replaced: (check all that apply) Note condition of replaced item(s)
 2" Locking Cap: _____ Lock: _____ 7/32 Allenhead: _____
 4" Locking Cap: _____ Lock-Dolphin: _____ 9/16 Bolt: _____
 6" Locking Cap: _____ Pinned Allenhead (DWP): _____

Remarks: _____

Signature: _____

Client: Delta Env.

Sampling Date: 10-28-09

Site: 525 West A St. (100877)

Project No.: _____

Hayward, CA

Well Designation: EX-1

Is setup of traffic control devices required? NO YES time: _____ hours
 Is there standing water in the well box? NO YES Above TOC _____ Below TOC
 Is top of casing cut level? NO YES If no, see remarks
 Is well cap sealed and locked? NO YES If no, see remarks
 Height of well casing riser (in inches): 10
 Well cover type: 8" or 12" UV _____ 12" EMCO _____ 8" or 12" BK _____ 8" Christy _____
 12" Christy _____ 8" M&D _____ 12" M&D _____ 12" DWP _____
 12" CNI 36" CNI _____ 12" Pomeco _____ Other: _____
 General condition of wellhead assembly: Excellent _____ Good _____ Fair _____ Poor _____

Purging Equipment: _____ 2" disposable bailer _____ Submersible pump
 _____ 2" PVC bailer _____ Dedicated bailer
 _____ 4" PVC bailer _____ Centrifugal pump
 Sampled with: Disposable bailer Teflon bailer _____ Disposable Tubing _____

Well Diameter: 2" _____ 4" _____ 6" 8" _____
 Purge Vol. Multiplier: 0.16 _____ 0.65 _____ 1.47 _____ 2.61 gal/ft.
Initial Measurement Recharge Measurement
 Time: 6:54 Time: 9:48 Calculated purge: 77.3
 Depth of well: 34.45 Depth to water: 78.73 Actual purge: 77.5
 Depth to water: 16.91

Start purge: 8:55 Sampling time: 9:50

Time	Temperature	E.C.	pH	Turbidity	Volume
9:15	18.4	1268	7.39		1
9:32	19.0	1304	7.38		2
9:41	19.5	1278	7.38		3

Sample appearance: clear Lock: com

Equipment replaced: (check all that apply) Note condition of replaced item(s)
 2" Locking Cap: _____ Lock: _____ 7/32 Allenhead: _____
 4" Locking Cap: _____ Lock-Dolphin: _____ 9/16 Bolt: _____
 6" Locking Cap: _____ Pinned Allenhead (DWP): _____

Remarks: _____

Signature: _____



Report Number : 40748

Date : 11/2/2004

Jim Brownell
Delta Environmental Consultants, Inc.
3164 Gold Camp Drive, Suite 200
Rancho Cordova, CA 95670

Subject : 8 Water Samples
Project Name : EZ Serve #100877
Project Number :
P.O. Number : RPMS0877

Dear Mr. Brownell,

Chemical analysis of the samples referenced above has been completed. Summaries of the data are contained on the following pages. Sample(s) were received under documented chain-of-custody. US EPA protocols for sample storage and preservation were followed.

Kiff Analytical is certified by the State of California (# 2236). If you have any questions regarding procedures or results, please call me at 530-297-4800.

Sincerely,



Joel Kiff

The signature is a handwritten name in black ink, appearing to be "Joel Kiff". It is written in a cursive style with a large initial "J". Below the signature, the name "Joel Kiff" is printed in a simple, black, sans-serif font.



Report Number : 40748

Date : 11/2/2004

Project Name : **EZ Serve #100877**

Project Number :

Sample : **MW-1**

Matrix : Water

Lab Number : 40748-01

Sample Date :10/25/2004

Parameter	Measured Value	Method Reporting Limit	Units	Analysis Method	Date Analyzed
Benzene	260	0.90	ug/L	EPA 8260B	10/30/2004
Toluene	3.3	0.90	ug/L	EPA 8260B	10/30/2004
Ethylbenzene	150	0.90	ug/L	EPA 8260B	10/30/2004
Total Xylenes	32	0.90	ug/L	EPA 8260B	10/30/2004
Methyl-t-butyl ether (MTBE)	14	0.90	ug/L	EPA 8260B	10/30/2004
Diisopropyl ether (DIPE)	< 0.90	0.90	ug/L	EPA 8260B	10/30/2004
Ethyl-t-butyl ether (ETBE)	< 0.90	0.90	ug/L	EPA 8260B	10/30/2004
Tert-amyl methyl ether (TAME)	< 0.90	0.90	ug/L	EPA 8260B	10/30/2004
Tert-Butanol	5.8	5.0	ug/L	EPA 8260B	10/30/2004
TPH as Gasoline	4300	90	ug/L	EPA 8260B	10/30/2004
Toluene - d8 (Surr)	102		% Recovery	EPA 8260B	10/30/2004
4-Bromofluorobenzene (Surr)	103		% Recovery	EPA 8260B	10/30/2004

Approved By:

Joel Kiff



Report Number : 40748

Date : 11/2/2004

Project Name : EZ Serve #100877

Project Number :

Sample : MW-1A

Matrix : Water

Lab Number : 40748-02

Sample Date :10/25/2004

Parameter	Measured Value	Method Reporting Limit	Units	Analysis Method	Date Analyzed
Benzene	1.3	0.50	ug/L	EPA 8260B	10/30/2004
Toluene	< 0.50	0.50	ug/L	EPA 8260B	10/30/2004
Ethylbenzene	58	0.50	ug/L	EPA 8260B	10/30/2004
Total Xylenes	3.7	0.50	ug/L	EPA 8260B	10/30/2004
Methyl-t-butyl ether (MTBE)	< 0.50	0.50	ug/L	EPA 8260B	10/30/2004
Diisopropyl ether (DIPE)	< 0.50	0.50	ug/L	EPA 8260B	10/30/2004
Ethyl-t-butyl ether (ETBE)	< 0.50	0.50	ug/L	EPA 8260B	10/30/2004
Tert-amyl methyl ether (TAME)	< 0.50	0.50	ug/L	EPA 8260B	10/30/2004
Tert-Butanol	< 5.0	5.0	ug/L	EPA 8260B	10/30/2004
TPH as Gasoline	2200	50	ug/L	EPA 8260B	10/30/2004
Toluene - d8 (Surr)	105		% Recovery	EPA 8260B	10/30/2004
4-Bromofluorobenzene (Surr)	101		% Recovery	EPA 8260B	10/30/2004

Approved By:

Joel Kiff



Report Number : 40748

Date : 11/2/2004

Project Name : **EZ Serve #100877**

Project Number :

Sample : **MW-2**

Matrix : Water

Lab Number : 40748-03

Sample Date :10/25/2004

Parameter	Measured Value	Method Reporting Limit	Units	Analysis Method	Date Analyzed
Benzene	280	2.0	ug/L	EPA 8260B	10/30/2004
Toluene	3.8	2.0	ug/L	EPA 8260B	10/30/2004
Ethylbenzene	500	2.0	ug/L	EPA 8260B	10/30/2004
Total Xylenes	980	2.0	ug/L	EPA 8260B	10/30/2004
Methyl-t-butyl ether (MTBE)	8.2	2.0	ug/L	EPA 8260B	10/30/2004
Diisopropyl ether (DIPE)	< 2.0	2.0	ug/L	EPA 8260B	10/30/2004
Ethyl-t-butyl ether (ETBE)	< 2.0	2.0	ug/L	EPA 8260B	10/30/2004
Tert-amyl methyl ether (TAME)	< 2.0	2.0	ug/L	EPA 8260B	10/30/2004
Tert-Butanol	< 9.0	9.0	ug/L	EPA 8260B	10/30/2004
TPH as Gasoline	9300	200	ug/L	EPA 8260B	10/30/2004
Toluene - d8 (Surr)	102		% Recovery	EPA 8260B	10/30/2004
4-Bromofluorobenzene (Surr)	102		% Recovery	EPA 8260B	10/30/2004

Approved By:

Joel Kiff



Report Number : 40748

Date : 11/2/2004

Project Name : **EZ Serve #100877**

Project Number :

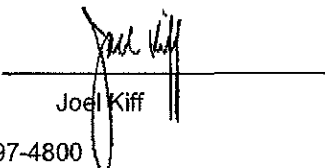
Sample : **MW-3**

Matrix : Water

Lab Number : 40748-04

Sample Date :10/25/2004

Parameter	Measured Value	Method Reporting Limit	Units	Analysis Method	Date Analyzed
Benzene	0.60	0.50	ug/L	EPA 8260B	10/30/2004
Toluene	< 0.50	0.50	ug/L	EPA 8260B	10/30/2004
Ethylbenzene	9.6	0.50	ug/L	EPA 8260B	10/30/2004
Total Xylenes	1.7	0.50	ug/L	EPA 8260B	10/30/2004
Methyl-t-butyl ether (MTBE)	< 0.50	0.50	ug/L	EPA 8260B	10/30/2004
Diisopropyl ether (DIPE)	< 0.50	0.50	ug/L	EPA 8260B	10/30/2004
Ethyl-t-butyl ether (ETBE)	< 0.50	0.50	ug/L	EPA 8260B	10/30/2004
Tert-amyl methyl ether (TAME)	< 0.50	0.50	ug/L	EPA 8260B	10/30/2004
Tert-Butanol	< 5.0	5.0	ug/L	EPA 8260B	10/30/2004
TPH as Gasoline	460	50	ug/L	EPA 8260B	10/30/2004
Toluene - d8 (Surr)	104		% Recovery	EPA 8260B	10/30/2004
4-Bromofluorobenzene (Surr)	101		% Recovery	EPA 8260B	10/30/2004

Approved By:  Joel Kiff



Report Number : 40748

Date : 11/2/2004

Project Name : **EZ Serve #100877**

Project Number :

Sample : **MW-4**

Matrix : Water

Lab Number : 40748-05

Sample Date :10/25/2004

Parameter	Measured Value	Method Reporting Limit	Units	Analysis Method	Date Analyzed
Benzene	180	0.50	ug/L	EPA 8260B	10/30/2004
Toluene	15	0.50	ug/L	EPA 8260B	10/30/2004
Ethylbenzene	200	0.50	ug/L	EPA 8260B	10/30/2004
Total Xylenes	190	0.50	ug/L	EPA 8260B	10/30/2004
Methyl-t-butyl ether (MTBE)	4.1	0.50	ug/L	EPA 8260B	10/30/2004
Diisopropyl ether (DIPE)	< 0.50	0.50	ug/L	EPA 8260B	10/30/2004
Ethyl-t-butyl ether (ETBE)	< 0.50	0.50	ug/L	EPA 8260B	10/30/2004
Tert-amyl methyl ether (TAME)	< 0.50	0.50	ug/L	EPA 8260B	10/30/2004
Tert-Butanol	< 5.0	5.0	ug/L	EPA 8260B	10/30/2004
TPH as Gasoline	4000	50	ug/L	EPA 8260B	10/30/2004
Toluene - d8 (Surr)	106		% Recovery	EPA 8260B	10/30/2004
4-Bromofluorobenzene (Surr)	102		% Recovery	EPA 8260B	10/30/2004

Approved By:

Joel Kiff



Report Number : 40748

Date : 11/2/2004

Project Name : **EZ Serve #100877**

Project Number :

Sample : **MW-5**

Matrix : Water

Lab Number : 40748-06

Sample Date :10/25/2004

Parameter	Measured Value	Method Reporting Limit	Units	Analysis Method	Date Analyzed
Benzene	27	0.50	ug/L	EPA 8260B	10/30/2004
Toluene	0.50	0.50	ug/L	EPA 8260B	10/30/2004
Ethylbenzene	50	0.50	ug/L	EPA 8260B	10/30/2004
Total Xylenes	3.7	0.50	ug/L	EPA 8260B	10/30/2004
Methyl-t-butyl ether (MTBE)	0.79	0.50	ug/L	EPA 8260B	10/30/2004
Diisopropyl ether (DIPE)	< 0.50	0.50	ug/L	EPA 8260B	10/30/2004
Ethyl-t-butyl ether (ETBE)	< 0.50	0.50	ug/L	EPA 8260B	10/30/2004
Tert-amyl methyl ether (TAME)	< 0.50	0.50	ug/L	EPA 8260B	10/30/2004
Tert-Butanol	< 5.0	5.0	ug/L	EPA 8260B	10/30/2004
TPH as Gasoline	4800	50	ug/L	EPA 8260B	10/30/2004
Toluene - d8 (Surr)	102		% Recovery	EPA 8260B	10/30/2004
4-Bromofluorobenzene (Surr)	104		% Recovery	EPA 8260B	10/30/2004

Approved By:

Joel Kiff



Report Number : 40748

Date : 11/2/2004

Project Name : **EZ Serve #100877**

Project Number :

Sample : **MW-6**

Matrix : Water

Lab Number : 40748-07

Sample Date :10/25/2004

Parameter	Measured Value	Method Reporting Limit	Units	Analysis Method	Date Analyzed
Benzene	9.8	0.50	ug/L	EPA 8260B	10/29/2004
Toluene	2.1	0.50	ug/L	EPA 8260B	10/29/2004
Ethylbenzene	83	0.50	ug/L	EPA 8260B	10/29/2004
Total Xylenes	16	0.50	ug/L	EPA 8260B	10/29/2004
Methyl-t-butyl ether (MTBE)	2.3	0.50	ug/L	EPA 8260B	10/29/2004
Diisopropyl ether (DIPE)	< 0.50	0.50	ug/L	EPA 8260B	10/29/2004
Ethyl-t-butyl ether (ETBE)	< 0.50	0.50	ug/L	EPA 8260B	10/29/2004
Tert-amyl methyl ether (TAME)	< 0.50	0.50	ug/L	EPA 8260B	10/29/2004
Tert-Butanol	< 5.0	5.0	ug/L	EPA 8260B	10/29/2004
TPH as Gasoline	3600	50	ug/L	EPA 8260B	10/29/2004
Toluene - d8 (Surr)	93.0		% Recovery	EPA 8260B	10/29/2004
4-Bromofluorobenzene (Surr)	102		% Recovery	EPA 8260B	10/29/2004

Approved By:

Joel Kiff



Report Number : 40748

Date : 11/2/2004

Project Name : **EZ Serve #100877**

Project Number :

Sample : EX-1

Matrix : Water

Lab Number : 40748-08

Sample Date :10/25/2004

Parameter	Measured Value	Method Reporting Limit	Units	Analysis Method	Date Analyzed
Benzene	2.1	0.50	ug/L	EPA 8260B	10/30/2004
Toluene	< 0.50	0.50	ug/L	EPA 8260B	10/30/2004
Ethylbenzene	4.9	0.50	ug/L	EPA 8260B	10/30/2004
Total Xylenes	1.8	0.50	ug/L	EPA 8260B	10/30/2004
Methyl-t-butyl ether (MTBE)	< 0.50	0.50	ug/L	EPA 8260B	10/30/2004
Diisopropyl ether (DIPE)	< 0.50	0.50	ug/L	EPA 8260B	10/30/2004
Ethyl-t-butyl ether (ETBE)	< 0.50	0.50	ug/L	EPA 8260B	10/30/2004
Tert-amyl methyl ether (TAME)	< 0.50	0.50	ug/L	EPA 8260B	10/30/2004
Tert-Butanol	< 5.0	5.0	ug/L	EPA 8260B	10/30/2004
TPH as Gasoline	96	50	ug/L	EPA 8260B	10/30/2004
Toluene - d8 (Surr)	102		% Recovery	EPA 8260B	10/30/2004
4-Bromofluorobenzene (Surr)	101		% Recovery	EPA 8260B	10/30/2004

Approved By:

Joel Kiff

Report Number : 40748

Date : 11/2/2004

QC Report : Method Blank Data

Project Name : **EZ Serve #100877**

Project Number :

Parameter	Measured Value	Method Reporting Limit	Units	Analysis Method	Date Analyzed
Benzene	< 0.50	0.50	ug/L	EPA 8260B	10/29/2004
Toluene	< 0.50	0.50	ug/L	EPA 8260B	10/29/2004
Ethylbenzene	< 0.50	0.50	ug/L	EPA 8260B	10/29/2004
Total Xylenes	< 0.50	0.50	ug/L	EPA 8260B	10/29/2004
Methyl-t-butyl ether (MTBE)	< 0.50	0.50	ug/L	EPA 8260B	10/29/2004
Diisopropyl ether (DIPE)	< 0.50	0.50	ug/L	EPA 8260B	10/29/2004
Ethyl-t-butyl ether (ETBE)	< 0.50	0.50	ug/L	EPA 8260B	10/29/2004
Tert-amyl methyl ether (TAME)	< 0.50	0.50	ug/L	EPA 8260B	10/29/2004
Tert-Butanol	< 5.0	5.0	ug/L	EPA 8260B	10/29/2004
TPH as Gasoline	< 50	50	ug/L	EPA 8260B	10/29/2004
Toluene - d8 (Surr)	103		%	EPA 8260B	10/29/2004
4-Bromofluorobenzene (Surr)	100		%	EPA 8260B	10/29/2004
Benzene	< 0.50	0.50	ug/L	EPA 8260B	10/29/2004
Toluene	< 0.50	0.50	ug/L	EPA 8260B	10/29/2004
Ethylbenzene	< 0.50	0.50	ug/L	EPA 8260B	10/29/2004
Total Xylenes	< 0.50	0.50	ug/L	EPA 8260B	10/29/2004
Methyl-t-butyl ether (MTBE)	< 0.50	0.50	ug/L	EPA 8260B	10/29/2004
Diisopropyl ether (DIPE)	< 0.50	0.50	ug/L	EPA 8260B	10/29/2004
Ethyl-t-butyl ether (ETBE)	< 0.50	0.50	ug/L	EPA 8260B	10/29/2004
Tert-amyl methyl ether (TAME)	< 0.50	0.50	ug/L	EPA 8260B	10/29/2004
Tert-Butanol	< 5.0	5.0	ug/L	EPA 8260B	10/29/2004
TPH as Gasoline	< 50	50	ug/L	EPA 8260B	10/29/2004
Toluene - d8 (Surr)	102		%	EPA 8260B	10/29/2004
4-Bromofluorobenzene (Surr)	99.8		%	EPA 8260B	10/29/2004

Parameter	Measured Value	Method Reporting Limit	Units	Analysis Method	Date Analyzed
Benzene	< 0.50	0.50	ug/L	EPA 8260B	10/30/2004
Toluene	< 0.50	0.50	ug/L	EPA 8260B	10/30/2004
Ethylbenzene	< 0.50	0.50	ug/L	EPA 8260B	10/30/2004
Total Xylenes	< 0.50	0.50	ug/L	EPA 8260B	10/30/2004
Methyl-t-butyl ether (MTBE)	< 0.50	0.50	ug/L	EPA 8260B	10/30/2004
Diisopropyl ether (DIPE)	< 0.50	0.50	ug/L	EPA 8260B	10/30/2004
Ethyl-t-butyl ether (ETBE)	< 0.50	0.50	ug/L	EPA 8260B	10/30/2004
Tert-amyl methyl ether (TAME)	< 0.50	0.50	ug/L	EPA 8260B	10/30/2004
Tert-Butanol	< 5.0	5.0	ug/L	EPA 8260B	10/30/2004
TPH as Gasoline	< 50	50	ug/L	EPA 8260B	10/30/2004
Toluene - d8 (Surr)	105		%	EPA 8260B	10/30/2004
4-Bromofluorobenzene (Surr)	97.8		%	EPA 8260B	10/30/2004

Approved By:  Joel Kiff

KIFF ANALYTICAL, LLC

2795 2nd St, Suite 300 Davis, CA 95616 530-297-4800

Report Number : 40748

Date : 11/2/2004

QC Report : Matrix Spike/ Matrix Spike Duplicate

Project Name : **EZ Serve #100877**

Project Number :

Parameter	Spiked Sample	Sample Value	Spike Level	Spike Dup. Level	Spiked Sample Value	Duplicate Spiked Sample Value	Units	Analysis Method	Date Analyzed	Spiked Sample Percent Recov.	Duplicate Spiked Sample Percent Recov.	Relative Percent Diff.	Spiked Sample Percent Recov. Limit	Relative Percent Diff. Limit
Benzene	40727-04	<0.50	40.0	40.0	41.2	38.3	ug/L	EPA 8260B	10/29/04	103	95.8	7.32	70-130	25
Toluene	40727-04	<0.50	40.0	40.0	42.1	39.1	ug/L	EPA 8260B	10/29/04	105	97.9	7.22	70-130	25
Tert-Butanol	40727-04	<5.0	200	200	202	190	ug/L	EPA 8260B	10/29/04	101	94.9	6.40	70-130	25
Methyl-t-Butyl Ether	40727-04	<0.50	40.0	40.0	42.9	39.1	ug/L	EPA 8260B	10/29/04	107	97.8	9.13	70-130	25
Benzene	40770-02	<0.50	40.0	40.0	41.7	39.9	ug/L	EPA 8260B	10/29/04	104	99.7	4.45	70-130	25
Toluene	40770-02	<0.50	40.0	40.0	43.0	41.4	ug/L	EPA 8260B	10/29/04	107	103	3.80	70-130	25
Tert-Butanol	40770-02	9.5	200	200	217	213	ug/L	EPA 8260B	10/29/04	104	102	1.93	70-130	25
Methyl-t-Butyl Ether	40770-02	13	40.0	40.0	56.7	55.7	ug/L	EPA 8260B	10/29/04	109	106	2.21	70-130	25
Benzene	40769-02	<0.50	40.0	40.0	38.9	38.0	ug/L	EPA 8260B	10/30/04	97.2	94.9	2.41	70-130	25
Toluene	40769-02	<0.50	40.0	40.0	37.0	36.2	ug/L	EPA 8260B	10/30/04	92.4	90.6	2.02	70-130	25
Tert-Butanol	40769-02	<5.0	200	200	189	190	ug/L	EPA 8260B	10/30/04	94.6	95.1	0.453	70-130	25
Methyl-t-Butyl Ether	40769-02	2.3	40.0	40.0	38.0	38.3	ug/L	EPA 8260B	10/30/04	89.3	90.0	0.797	70-130	25

KIFF ANALYTICAL, LLC

2795 2nd St, Suite 300 Davis, CA 95616 530-297-4800

Approved By: Joe Kiff



Report Number : 40748

Date : 11/2/2004

QC Report : Laboratory Control Sample (LCS)

Project Name : **EZ Serve #100877**


Project Number :

Parameter	Spike Level	Units	Analysis Method	Date Analyzed	LCS Percent Recov.	LCS Percent Recov. Limit
Benzene	40.0	ug/L	EPA 8260B	10/29/04	105	70-130
Toluene	40.0	ug/L	EPA 8260B	10/29/04	109	70-130
Tert-Butanol	200	ug/L	EPA 8260B	10/29/04	102	70-130
Methyl-t-Butyl Ether	40.0	ug/L	EPA 8260B	10/29/04	112	70-130
Benzene	40.0	ug/L	EPA 8260B	10/29/04	104	70-130
Toluene	40.0	ug/L	EPA 8260B	10/29/04	107	70-130
Tert-Butanol	200	ug/L	EPA 8260B	10/29/04	100	70-130
Methyl-t-Butyl Ether	40.0	ug/L	EPA 8260B	10/29/04	108	70-130
Benzene	40.0	ug/L	EPA 8260B	10/30/04	94.0	70-130
Toluene	40.0	ug/L	EPA 8260B	10/30/04	90.4	70-130
Tert-Butanol	200	ug/L	EPA 8260B	10/30/04	89.2	70-130
Methyl-t-Butyl Ether	40.0	ug/L	EPA 8260B	10/30/04	89.5	70-130

KIFF ANALYTICAL, LLC

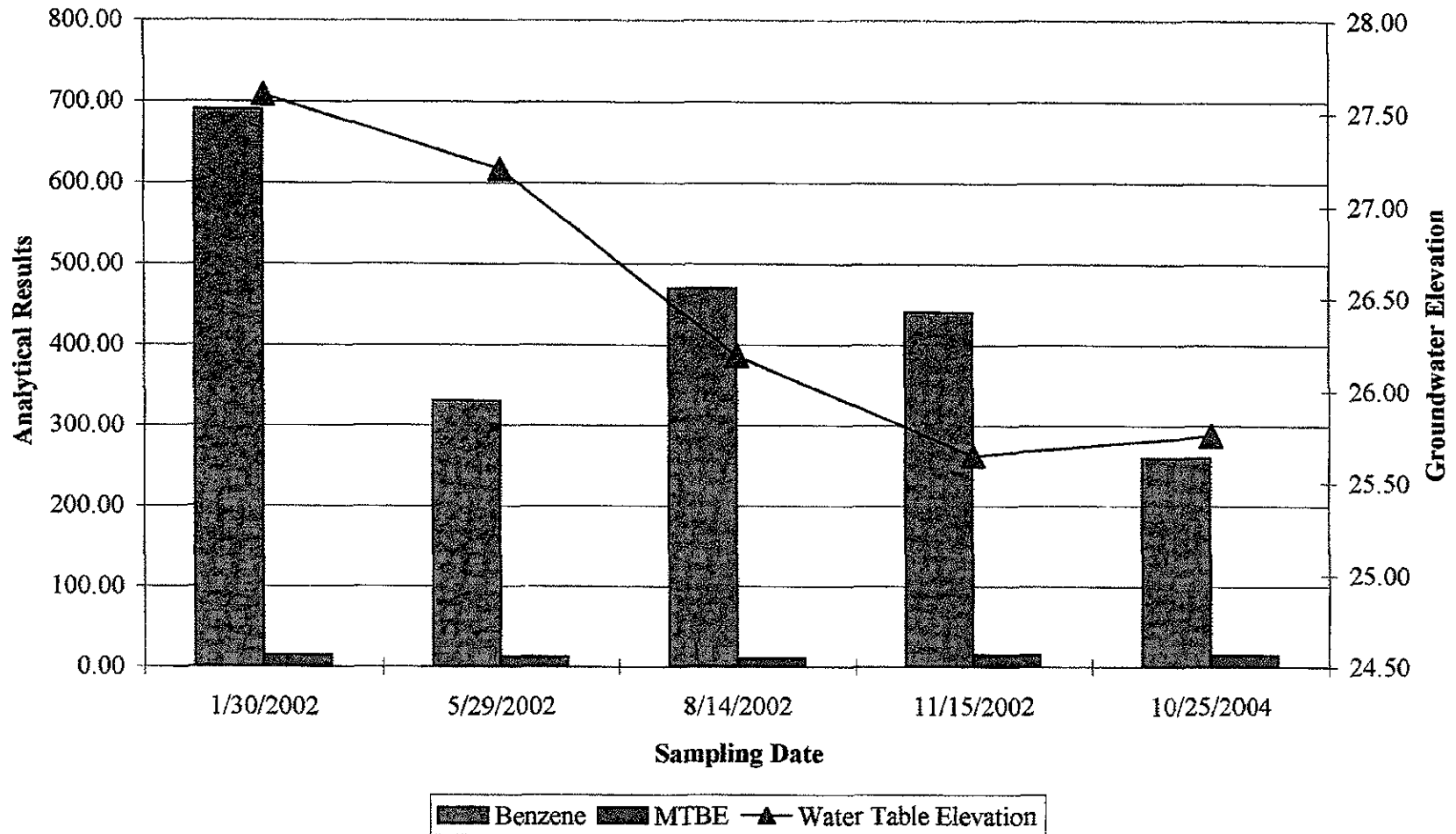
2795 2nd St, Suite 300 Davis, CA 95616 530-297-4800

Approved By:

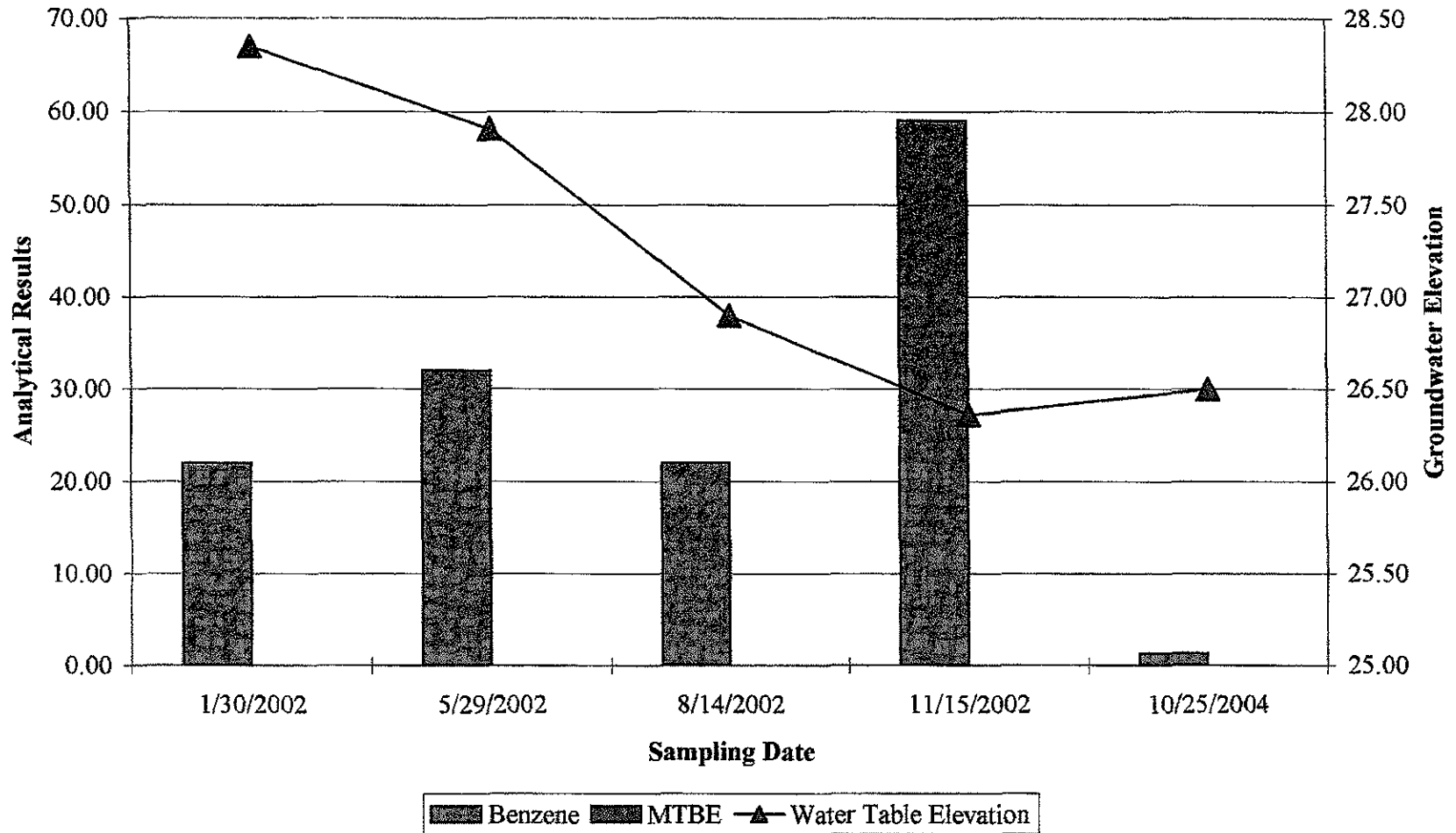


Joe Kiff

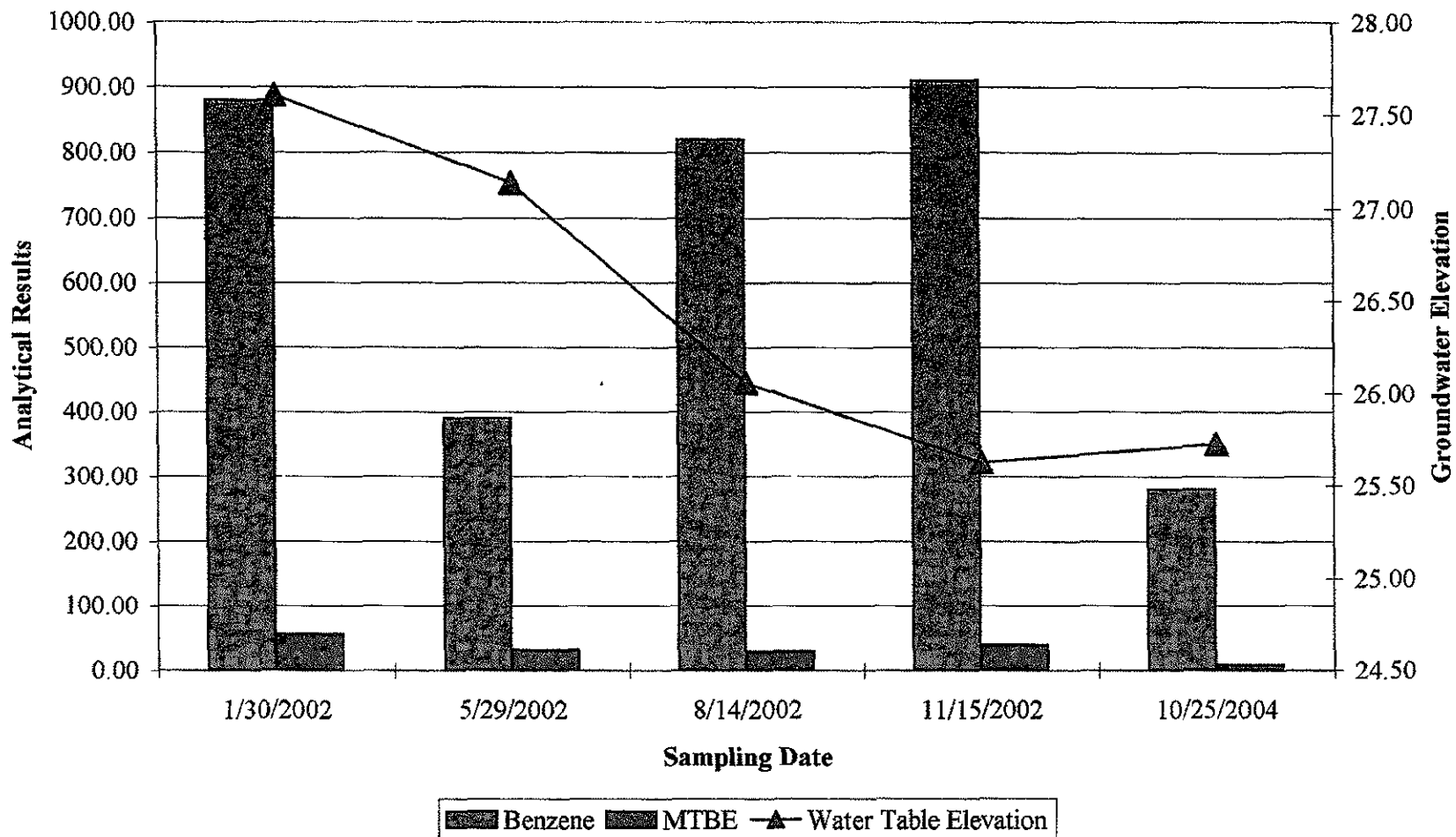
Former E-Z Serve Location #100877
MW-1 Groundwater Analytical Data



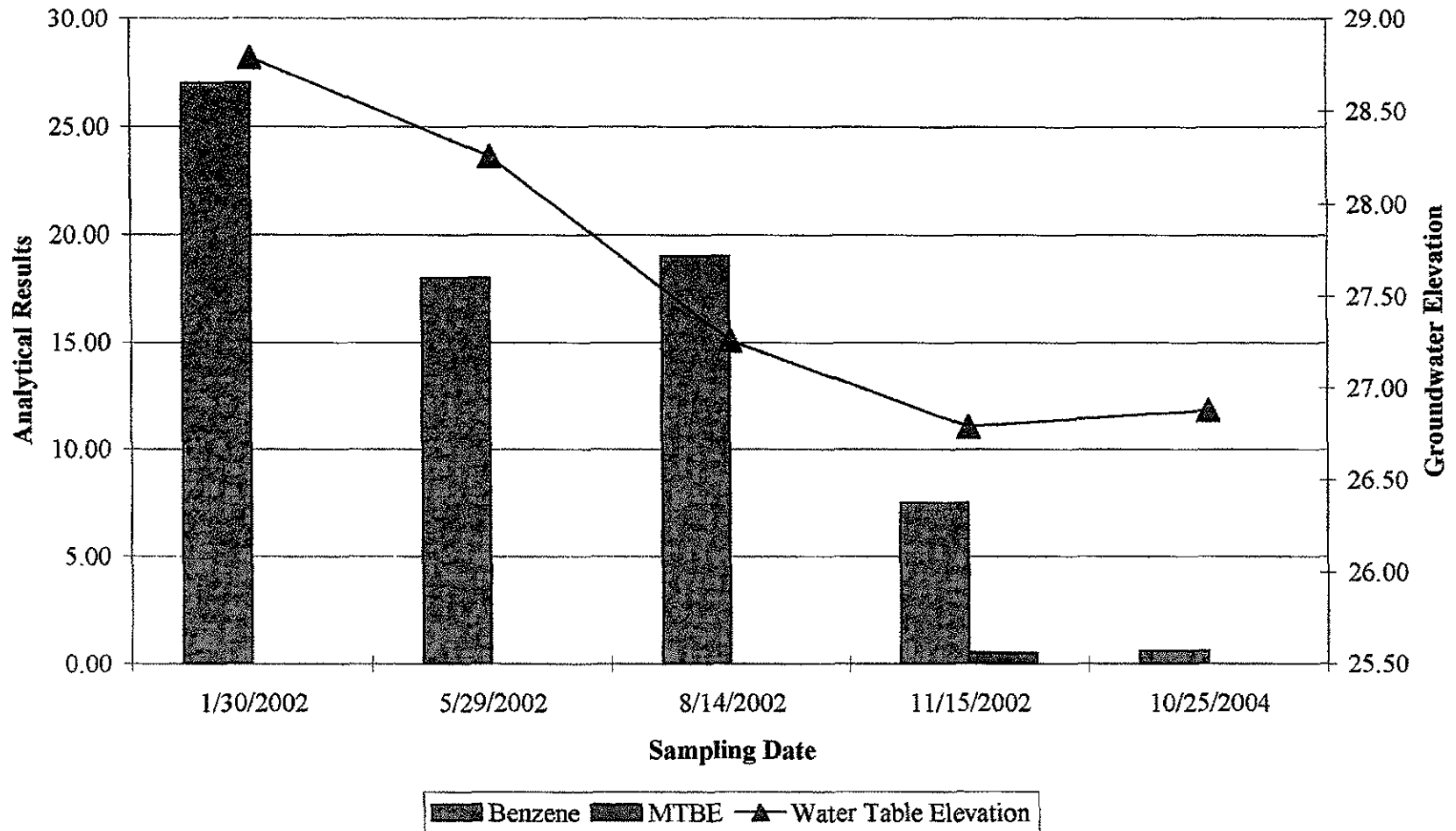
Former E-Z Serve Location #100877
MW-1A Groundwater Analytical Data



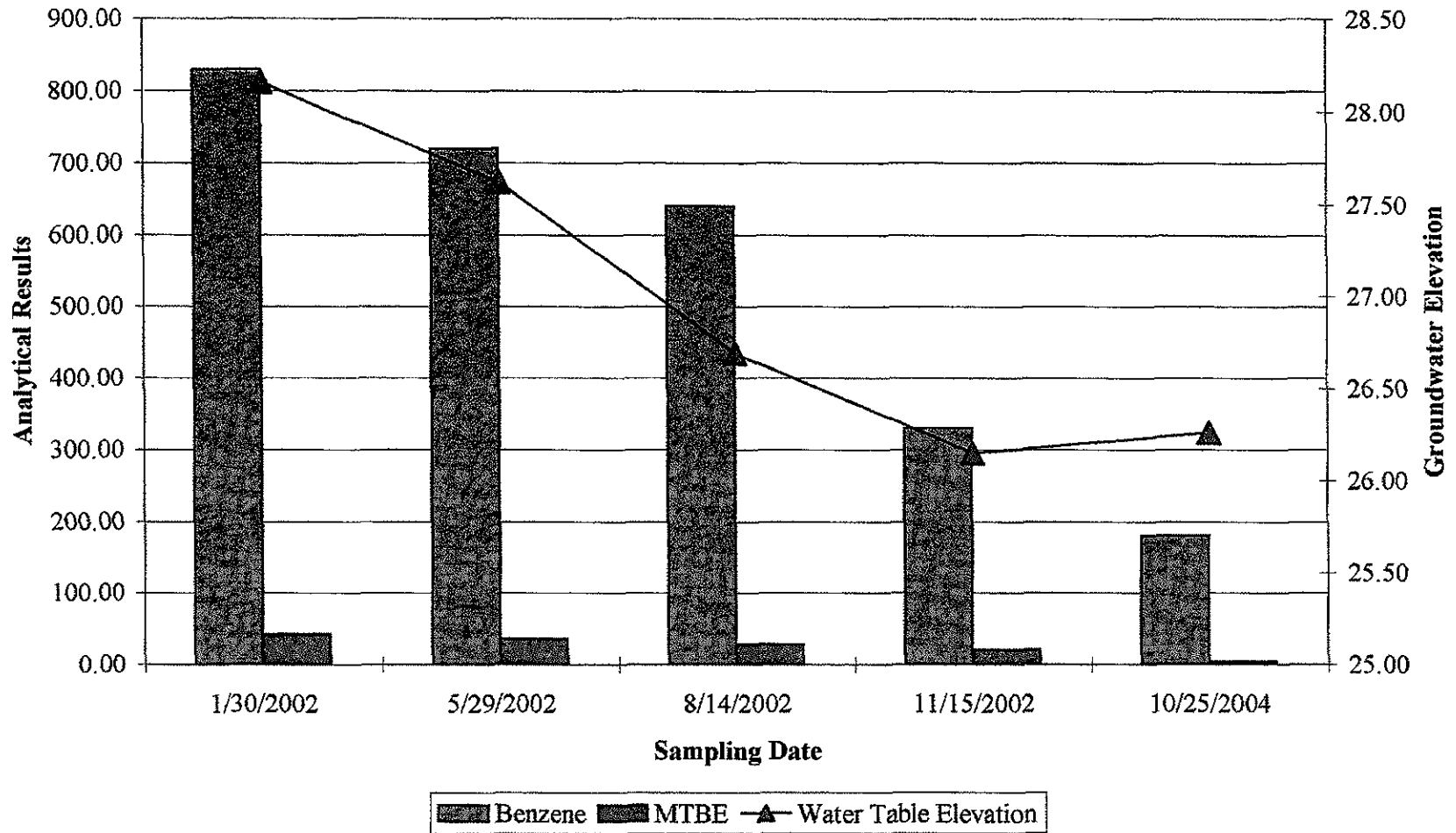
Former E-Z Serve Location #100877
MW-2 Groundwater Analytical Data



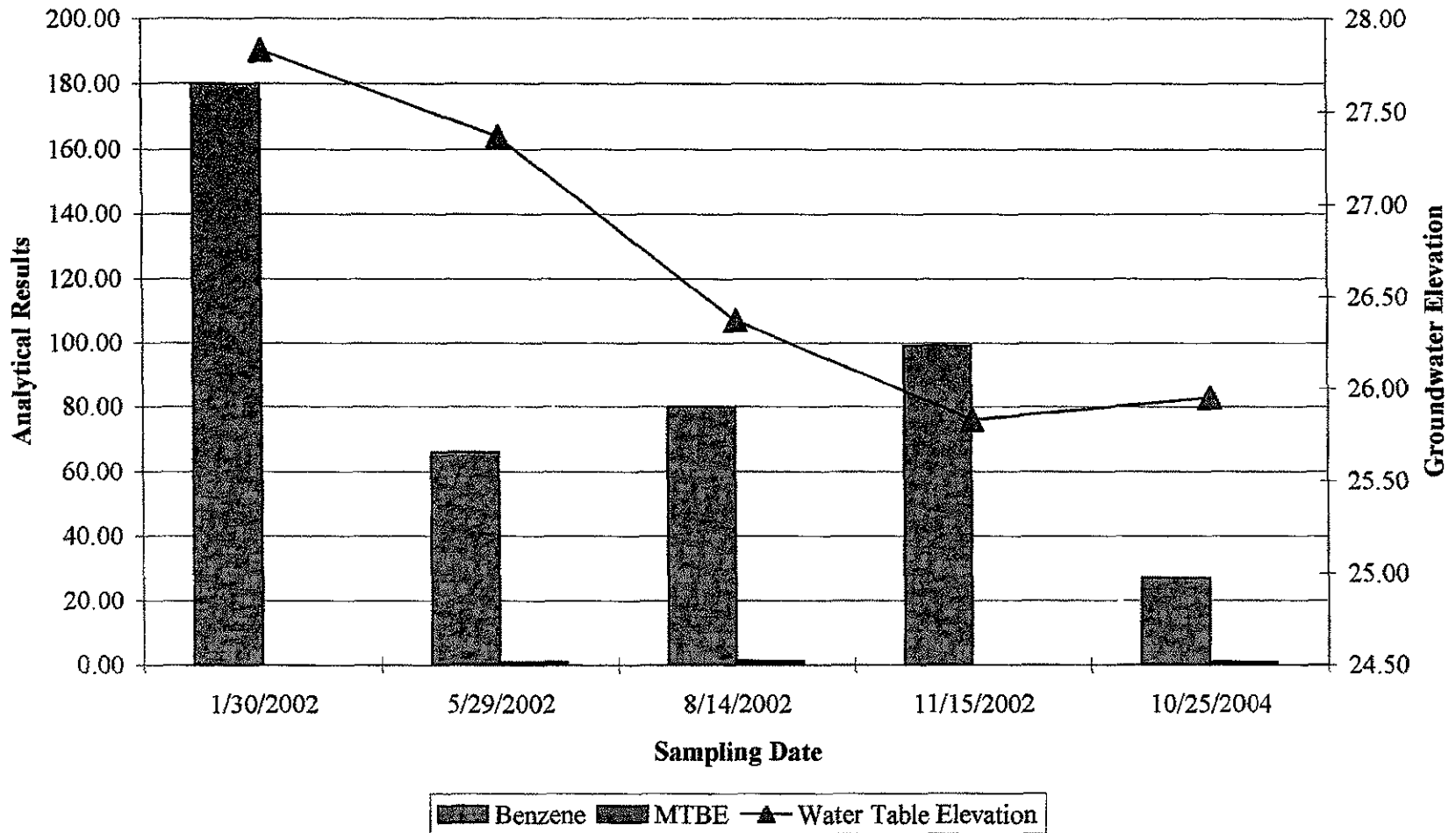
Former E-Z Serve Location #100877
MW-3 Groundwater Analytical Data



Former E-Z Serve Location #100877
MW-4 Groundwater Analytical Data



Former E-Z Serve Location #100877
MW-5 Groundwater Analytical Data



Former E-Z Serve Location #100877
MW-6 Groundwater Analytical Data

